



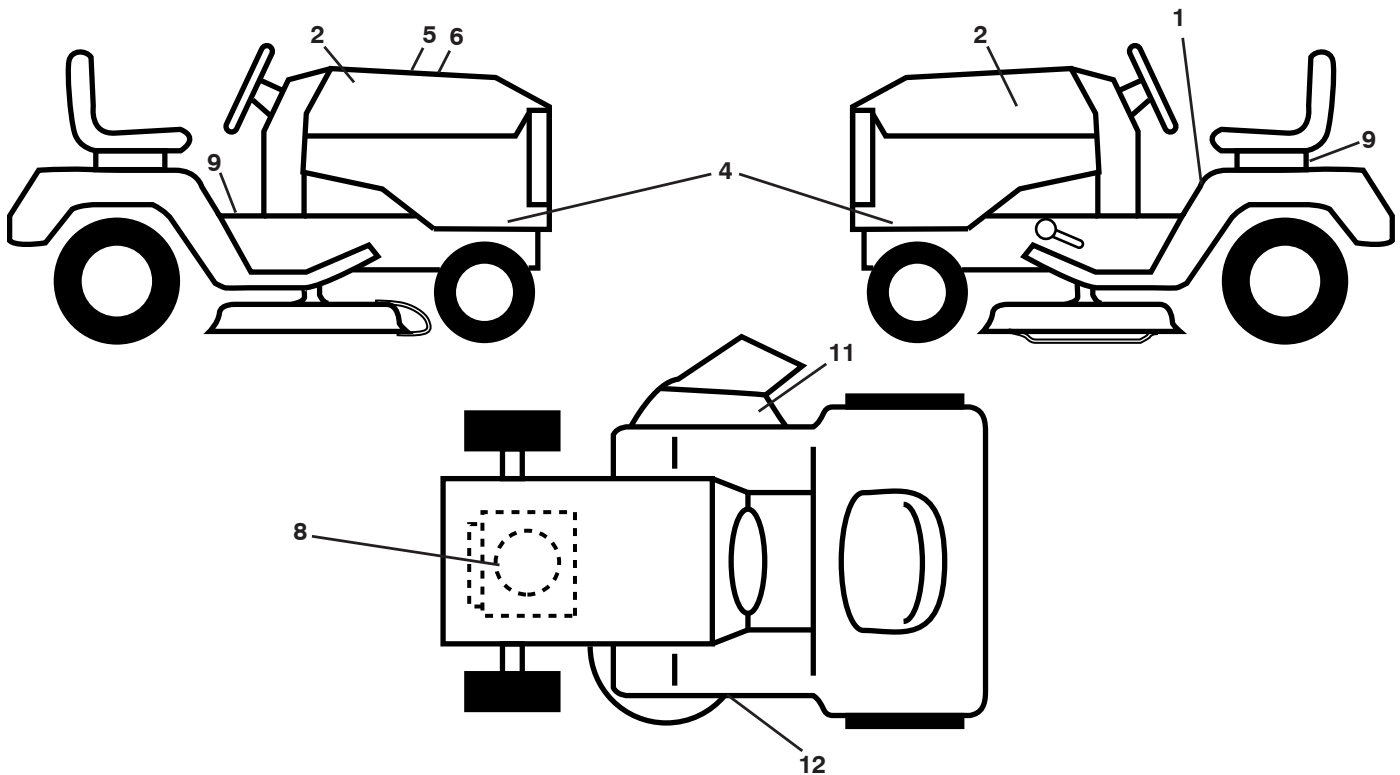
**917.289610**  
**(YTH2042)**

---

**Illustrated Parts List**

# TRACTOR -- MODEL NUMBER YTH2042 (289610)

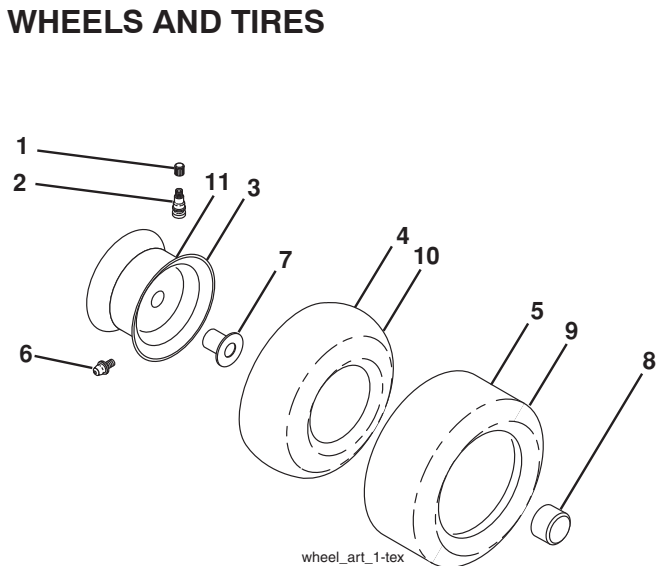
## DECALS



KEY NO.	PART NO.	DESCRIPTION
1	532 41 16-58	Decal, Fender Warn./Instructions
2	532 42 91-96	Decal, Hood Logo
4	532 41 06-42	Decal, Hood Panel
5	532 42 38-29	Decal, Customer Respons.
6	532 43 65-57	Decal, Replacement
8	532 42 95-51	Decal, Engine
9	532 14 50-05	Decal, Battery Dnge/Poi

KEY NO.	PART NO.	DESCRIPTION
11	532 17 05-63	Decal, Warning
12	532 16 03-96	Decal, Mower V-Belt Schematic
--	532 16 69-60	Decal, Bypass
--	532 41 08-05	Pad, Footrest, LH
--	532 41 10-56	Pad, Footrest, RH
--	532 43 65-48	Manual, Owner's (English)
--	532 43 65-49	Manual, Owner's (French)

## WHEELS AND TIRES



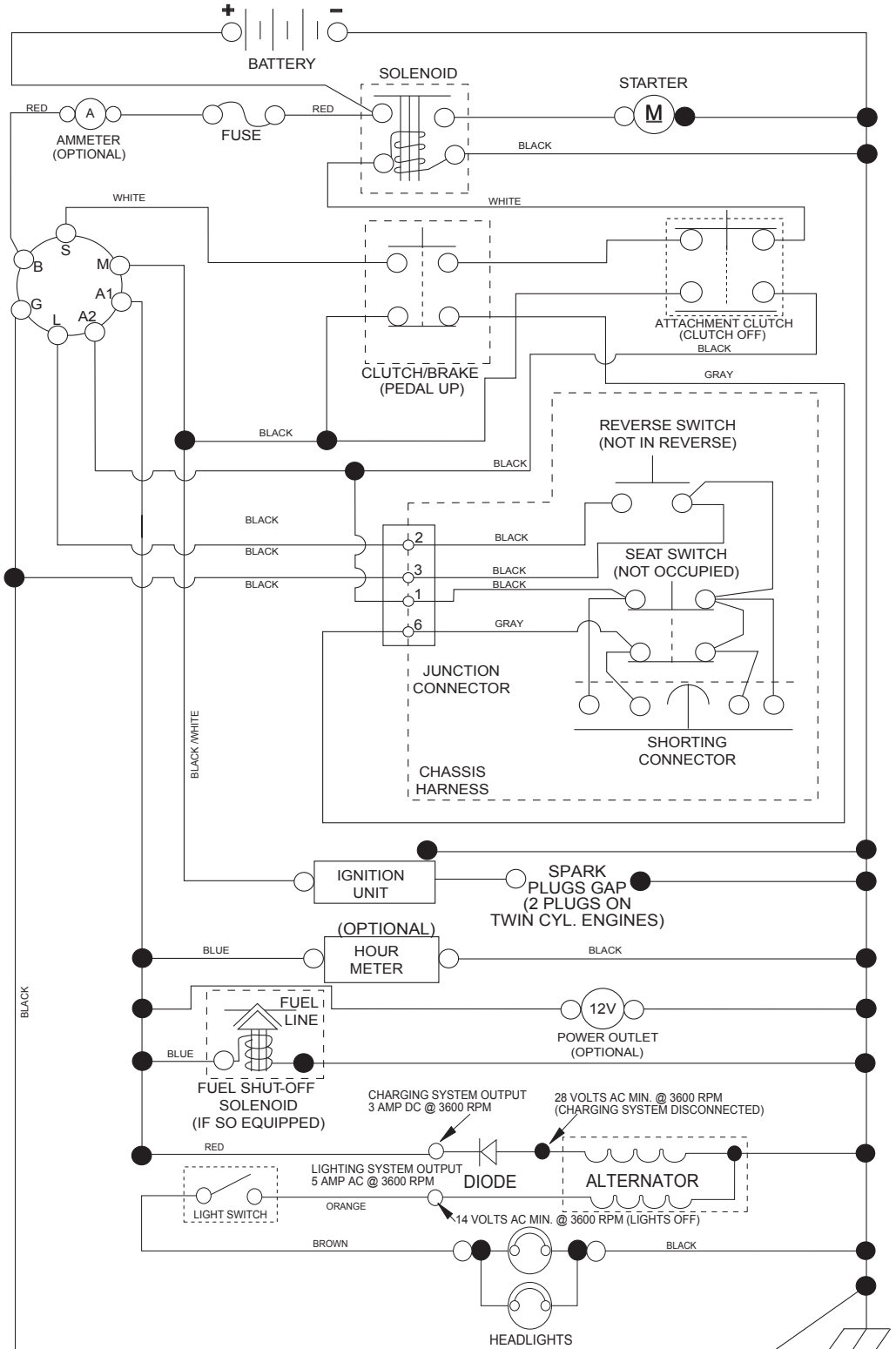
KEY NO.	PART NO.	DESCRIPTION
1	532 05 91-92	Cap Valve Tire
2	532 06 51-39	Stem Valve
3	532 13 83-36	Rim Asm 6" Front
4	532 05 99-04	Tube Front (Service Item Only)
5	532 10 62-22	Tire Front 15 x 6.0-6
6	532 12 49-57	Fitting Grease (Front Wheel Only)
7	532 12 49-59	Bearing Flange (Front Wheel Only)
8	532 17 50-39	Cap Axle Blk 1 50 x 1 00
9	532 42 05-31	Tire Rear 18 x 9.5-8 "Turf Saver LT"
10	532 12 49-26	Tube Rear (Service Item Only)
11	532 13 83-37	Rim Asm 8" Rear
--	532 14 43-34	Sealant, Tire (10 oz. Tube)

**NOTE:** All component dimensions given in U.S. inches  
1 inch = 25.4 mm

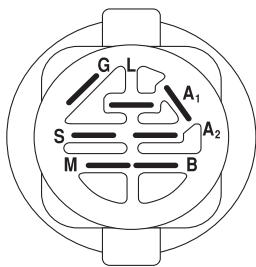
# TRACTOR - - MODEL NUMBER YTH2042 (289610)

## SCHEMATIC

SCH11

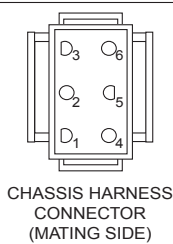


**NOTE**  
YOUR TRACTOR IS EQUIPPED WITH A SPECIAL ALTERNATOR SYSTEM. THE LIGHTS ARE NOT CONNECTED TO THE BATTERY, BUT HAVE THEIR OWN ELECTRICAL SOURCE. BECAUSE OF THIS, THE BRIGHTNESS OF THE LIGHTS WILL CHANGE WITH ENGINE SPEED. AT IDLE THE LIGHTS WILL DIM. AS THE ENGINE IS SPEEDED UP, THE LIGHTS WILL BECOME THEIR BRIGHTEST.

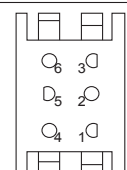


IGNITION SWITCH

POSITION	CIRCUIT	"MAKE"
OFF	M+G+A1	
RUN/OVERRIDE	B+A1	
RUN	B+A1	L+A2
START	B + S + A1	



CHASSIS HARNESS CONNECTOR (MATING SIDE)



DASH HARNESS CONNECTOR (MATING SIDE)

WIRING INSULATED CLIPS  
NOTE: IF WIRING INSULATED CLIPS WERE REMOVED FOR SERVICING OF UNIT, THEY SHOULD BE RE-INSTALLED TO PROPERLY SECURE YOUR WIRING.

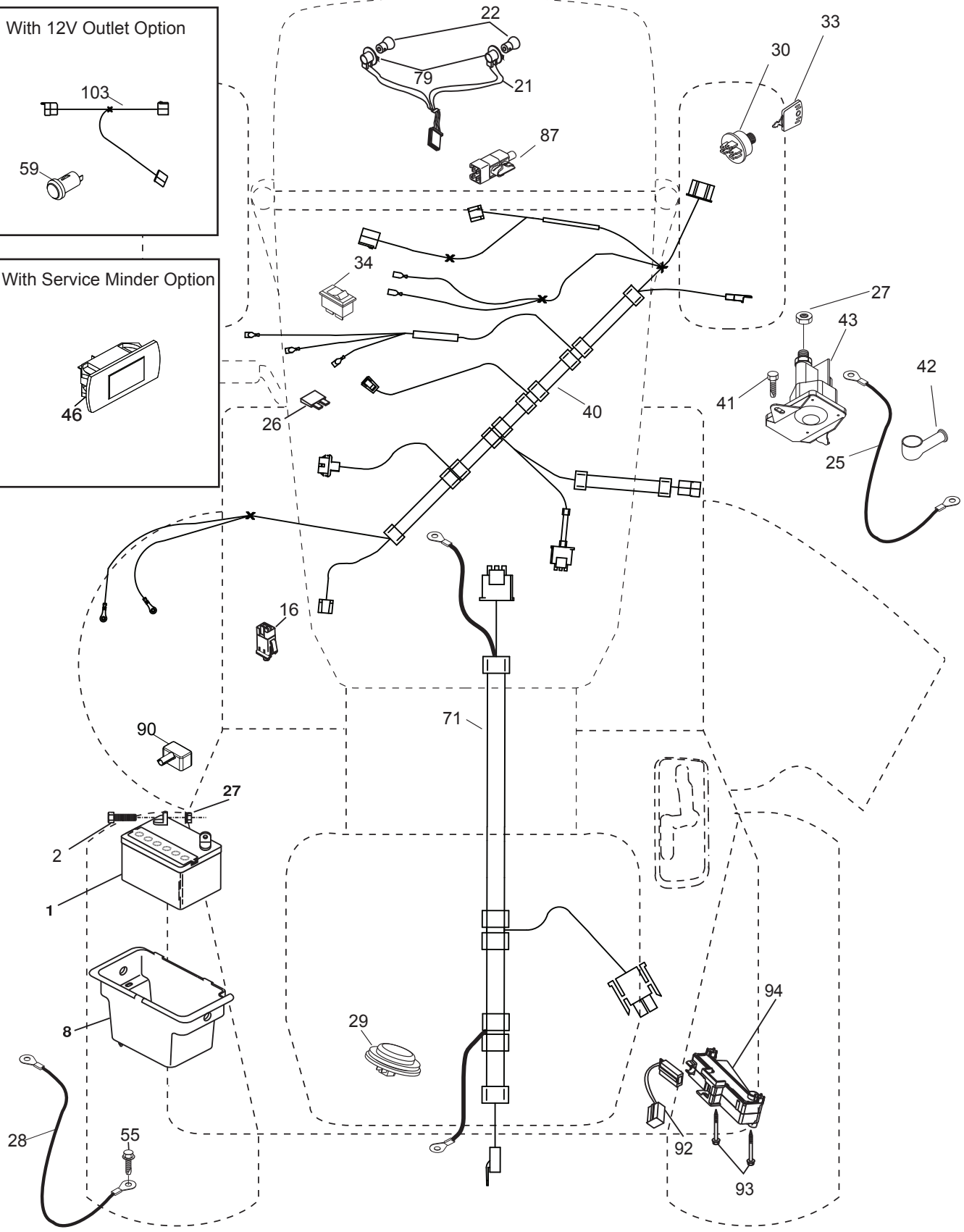
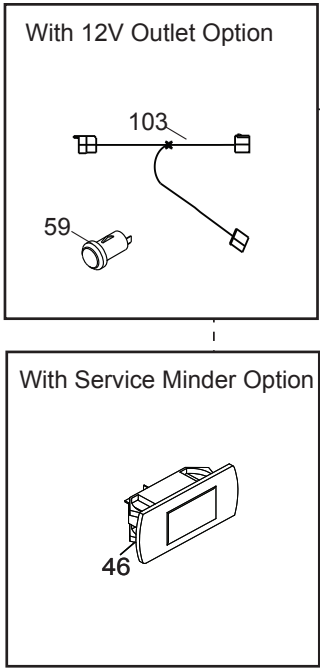
●  
NON-REMOVABLE CONNECTIONS

○  
REMOVABLE CONNECTIONS

# TRACTOR -- MODEL NUMBER YTH2042 (289610)

## ELECTRICAL

T02S



# TRACTOR -- MODEL NUMBER YTH2042 (289610)

## ELECTRICAL

KEY NO.	PART NO.	DESCRIPTION
1	532 16 34-65	Battery
2	874 76 04-12	Bolt Hex Head 1/4-20 x 3/4
8	532 19 32-28	Box Battery
16	532 17 61-38	Switch Interlock Push-In
21	532 40 02-52	Harness Socket Light w/4152J
22	532 00 41-52	Bulb Light
25	532 41 28-95	Cable Starter
26	532 17 51-58	Fuse
27	873 51 04-00	Nut Keps Hex 1/4-20 unc
28	532 19 88-85	Cable, Ground
29	532 40 15-45	Switch, Seat
30	532 19 33-50	Switch, Ign
33	532 41 19-35	Key/Chain
34	532 11 07-12	Switch Light/Reset
40	532 40 10-98	Harness Ign. Dash
41	817 72 04-08	Screw Thd Cut 1/4-20 x 1/2
42	532 13 15-63	Cover, Terminal
43	532 19 25-07	Solenoid
55	817 06 05-12	Screw Thdrol 5/16-18 x 3/4
71	532 40 04-49	Harness Chassis
79	532 17 52-42	Socket Asm Bulb Twistlock
87	532 19 78-02	Switch Interlock Clutch Cable
90	532 40 07-25	Cover, Terminal Battery
92	532 19 66-15	Harness Pigtail Reverse Switch
93	532 19 25-40	Screw Plastite 10-14 x 2.0
94	532 19 18-34	Module Reverse ROS

**NOTE:** All component dimensions given in U.S. inches  
1 inch = 25.4 mm



## TRACTOR - - MODEL NUMBER YTH2042 (289610)

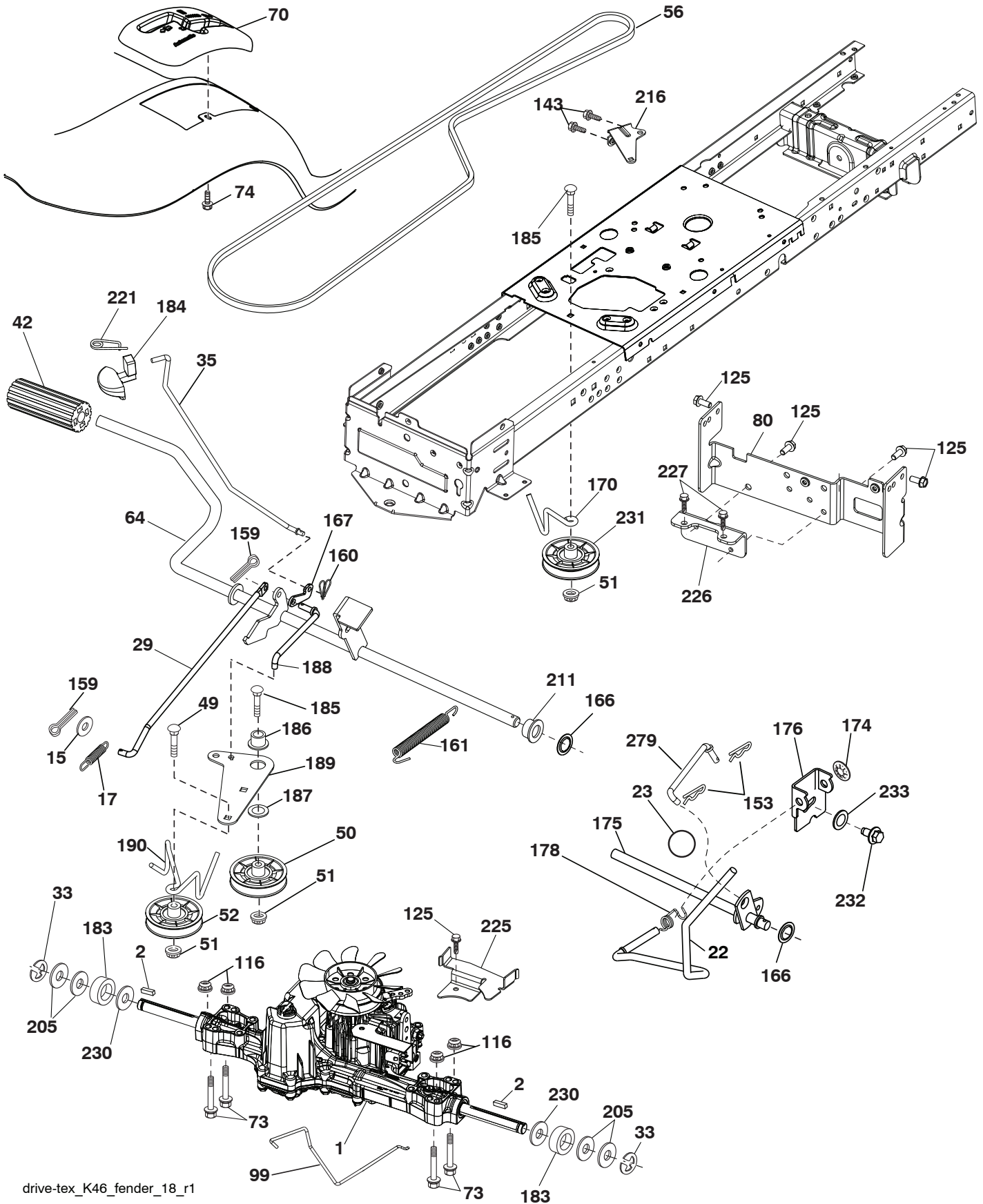
### CHASSIS

KEY NO.	PART NO.	DESCRIPTION	KEY NO.	PART NO.	DESCRIPTION
3	532 43 07-71	Logo	195	532 40 41-37	Plug Dash
5	532 40 87-04	Dash	196	532 41 45-80	Console Asm. Deck Lift
14	532 41 10-46	Hood	202	532 40 30-48	Vent Side Hood RH
15	532 19 89-07	Lens LH	203	532 40 30-76	Vent Side Hood LH
18	532 40 86-07	Grille	204	532 41 66-13	Vent Top Hood
25	532 19 89-06	Lens RH	205	532 40 17-09	Skirt Side RH
34	532 19 61-25	Plate Engine	206	532 40 17-11	Skirt Side LH
36	817 06 05-12	Screw 5/16-18 x 3/4	207	532 19 71-98	Bezel RH
37	532 41 63-07	Fender	208	532 19 71-99	Bezel LH
52	873 68 05-00	Nut Crown Lock 5/16	209	532 19 91-30	Insert Hex Top RH
58	532 41 22-80	Drawbar Upper	210	532 19 91-31	Insert Hex Top LH
68	817 49 05-08	Screw THDROL 5/16-18 x 1/2	211	532 19 91-32	Insert Hex Bottom RH
130	532 41 63-58	Screw #10 x 0.750 BOS Thread	212	532 19 91-33	Insert Hex Bottom LH
137	532 40 75-90	Bumper Dash	213	874 76 05-12	Bolt 5/16-18 x 3/4
138	532 40 29-54	Cupholder	214	532 19 91-45	Clip Retainer
150	532 19 85-14	Air Duct	217	532 40 91-67	Rod Pivot Hood
152	532 19 95-35	Shield Browning	218	532 19 63-95	X-Piece Hood Stop
159	817 00 06-12	Screw Hexwash Thor 3/8-16 x 3/4	228	532 19 51-61	Stud Fastener
162	532 14 24-32	Screw	234	532 40 47-42	Bumper Hood
175	532 19 63-04	Crossmember Plate	235	532 40 61-29	Spacer Fender
176	532 40 07-76	Screw 10-24 x 5/8	236	873 93 05-00	Nut Lock 5/16-18 unc
177	532 19 52-27	Bushing Steering	238	532 40 86-06	Trim
180	532 41 50-63	Chassis	287	817 60 04-06	Screw Hex Washhead 1/4-20 x 3/8
181	532 40 30-25	Bushing Mtg. Fender Crgo	289	532 40 35-71	Plug Cruise/Phone
182	532 40 68-59	Dash Lower	298	532 11 04-52	Nut Push
183	874 52 05-20	Bolt 5/16-18 x 1-1/4 Full Thd			
189	817 00 05-12	Screw 5/16-18 x 3/4			
194	873 90 05-00	Nut Lock Hex Flange 5/16-18			

**NOTE:** All component dimensions given in U.S. inches  
1 inch = 25.4 mm

# TRACTOR -- MODEL NUMBER YTH2042 (289610)

## DRIVE



drive-tex\_K46\_fender\_18\_r1



## TRACTOR - - MODEL NUMBER YTH2042 (289610)

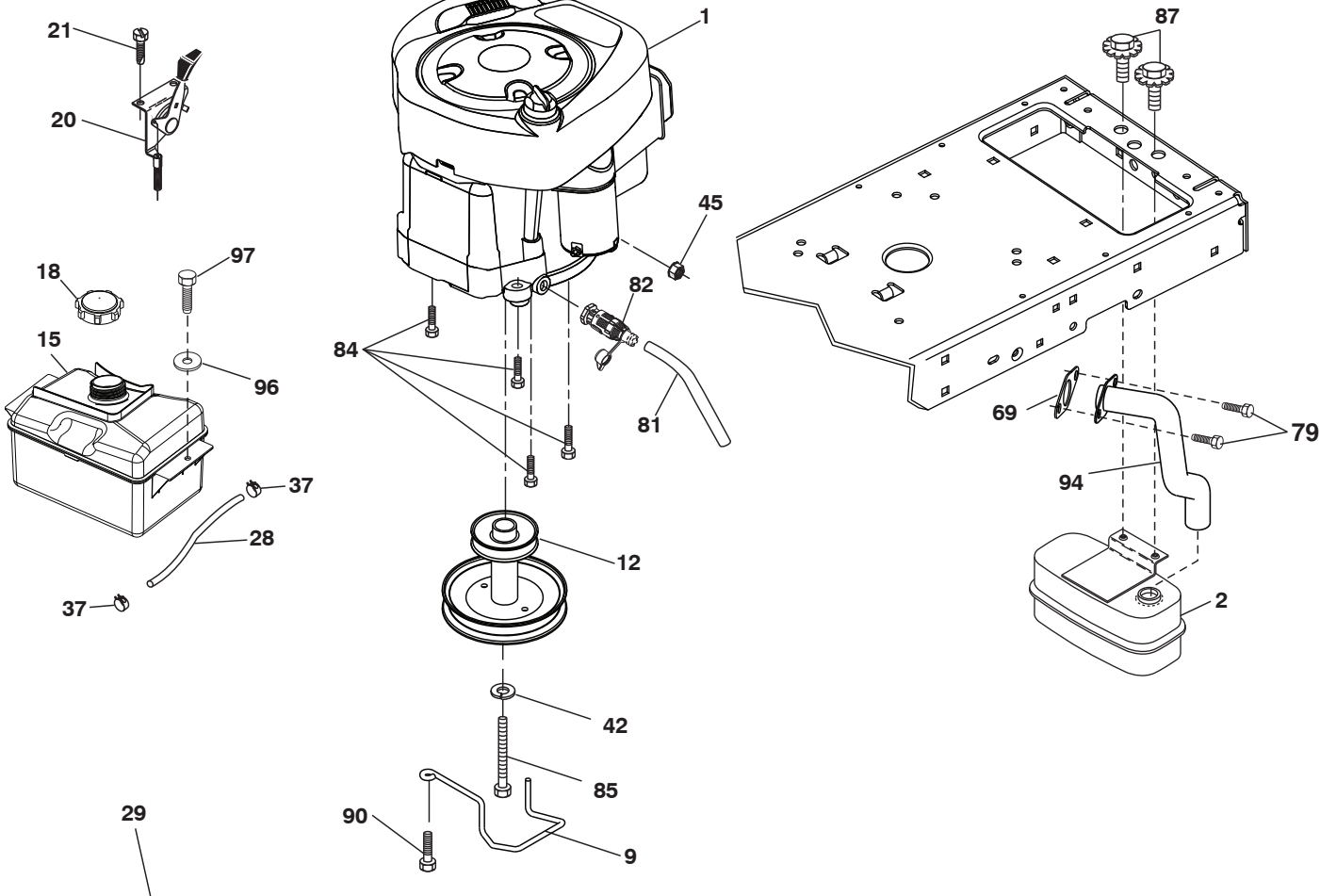
### DRIVE

KEY NO.	PART NO.	DESCRIPTION	KEY NO.	PART NO.	DESCRIPTION
1	---	Transaxle, Tufftorq K46BA (Internal Parts Not Available)	167	532 40 52-57	Latch Brake Parking
2	532 12 35-83	Key Square	170	532 41 34-30	Keeper Belt Centerspan
15	819 13 13-16	Washer 13/32 x 13/16 x 16 Ga.	174	532 19 72-89	Nut Push
17	532 41 36-78	Spring, Brake	175	532 40 85-39	Shaft Asm Shift
22	532 19 76-60	Rod Shift	176	532 19 62-14	Arm Clevis Rod Shift
23	532 14 08-45	Knob	178	532 19 74-56	Spring Shift
29	532 40 38-06	Rod, Brake	183	532 13 70-57	Spacer Axle
33	812 00 00-01	Ring E	184	532 40 31-18	Handle Parking Brake
35	532 19 95-91	Rod, Brake, Park	185	872 11 06-22	Bolt
42	532 12 48-72	Cover, Foot Pedal	186	532 19 43-21	Spacer Retainer
49	872 11 06-14	Bolt	187	819 13 32-10	Washer
50	532 19 43-27	Pulley Idler Flat	188	532 19 43-23	Link Clutch Ground Drive
51	873 90 06-00	Lock Nut 3/8-16	189	532 19 43-17	Bellcrank Ground Drive
52	532 19 43-26	Idler V-Groove 910" Offset	190	532 19 43-18	Keeper Bellcrank Ground Drive
56	532 13 09-69	V-Belt, Drive	205	532 12 17-48	Washer 25/32 x 1-5/8 x 16 Ga.
64	532 19 62-00	Shaft Asm. Pedal Brake Control	211	532 19 62-12	Bushing Shaft
70	532 41 14-74	Console	216	532 19 61-31	Bracket Pulley Idler
73	874 49 05-40	Bolt Hex 5/16-18 Gr. 5	221	532 40 31-87	Retainer Spring Clip Handle
74	532 14 24-32	Screw 1/4 x 1/2	225	532 40 33-19	Keeper Belt Transaxle
80	532 41 00-24	Strap Torque	226	532 40 15-64	Bracket Mount Torque
99	532 41 57-42	Rod Spring Bypass	227	817 49 05-12	Screw 5/16-18 x 3/4
116	873 90 05-00	Nut Lock Hex Flange 5/16-18	230	532 18 89-67	Washer Harden .793 x 1.637 x 060
125	817 00 05-12	Screw 5/16-18 x 3/4	231	532 40 72-87	Idler V-Groove 1.688" Offset
143	817 49 05-08	Screw THDROL 5/16-18	232	874 78 07-16	Bolt 7/16-14 x 1 Gr 5
153	532 12 47-88	Retainer Spring 1"	233	532 40 52-96	Washer Serrated
159	876 02 04-12	Pin Cotter 1/8 x 3/4	279	532 41 31-50	Link Shift
160	532 16 94-84	Retainer Clip			
161	532 10 57-09	Spring, Return, Clutch			
166	532 42 91-64	Nut Push .625			

**NOTE:** All component dimensions given in U.S. inches  
1 inch = 25.4 mm

# TRACTOR - - MODEL NUMBER YTH2042 (289610)

## ENGINE



**OPTIONAL EQUIPMENT**  
**SPARK ARRESTER**

engine-tex\_BS\_2\_r3

# TRACTOR - - MODEL NUMBER YTH2042 (289610)

## ENGINE

KEY NO.	PART NO.	DESCRIPTION
1	- - - - -	Engine Briggs Model No. 331777-1372-B1
2	532 18 86-55	Muffler
9	532 19 43-20	Keeper Belt Engine
12	532 40 54-71	Pulley Engine
15	532 40 74-89	Tank Fuel
18	532 43 02-20	Cap Asm
20	532 40 15-08	Control Throttle
21	532 41 63-58	Screw #10 x 0.750 BOS Thread
28	532 40 11-37	Fuel Line
29	532 13 71-80	Spark Arrester Kit
37	532 12 34-87	Clamp Hose
42	810 04 07-00	Washer Lock 7/16
45	873 51 04-00	Nut Keps Hex 1/4-20 unc
69	532 16 52-91	Gasket
79	532 19 23-34	Screw 5/16-18 x 3/4
81	532 14 84-56	Tube Drain Oil Easy
82	532 42 82-87	Valve Drain Oil
84	817 06 06-20	Screw 3/8-16 x 1/4
85	532 17 39-37	Bolt Hex 7/16-20 x 4 Gr. 5
87	532 17 18-77	Bolt 5/16-18 unc x 3/4 w/sems
90	817 00 06-16	Screw 3/8-16 x 1
94	532 40 54-50	Exhaust Tube
96	819 09 14-16	Washer 9/32 x 7/8 x 16 Ga.
97	817 67 04-12	Screw 1/4-20 x 3/4

**NOTE:** All component dimensions given in U.S. inches  
1 inch = 25.4 mm

For engine service and replacement parts, call the toll free number for your engine manufacturer listed below:

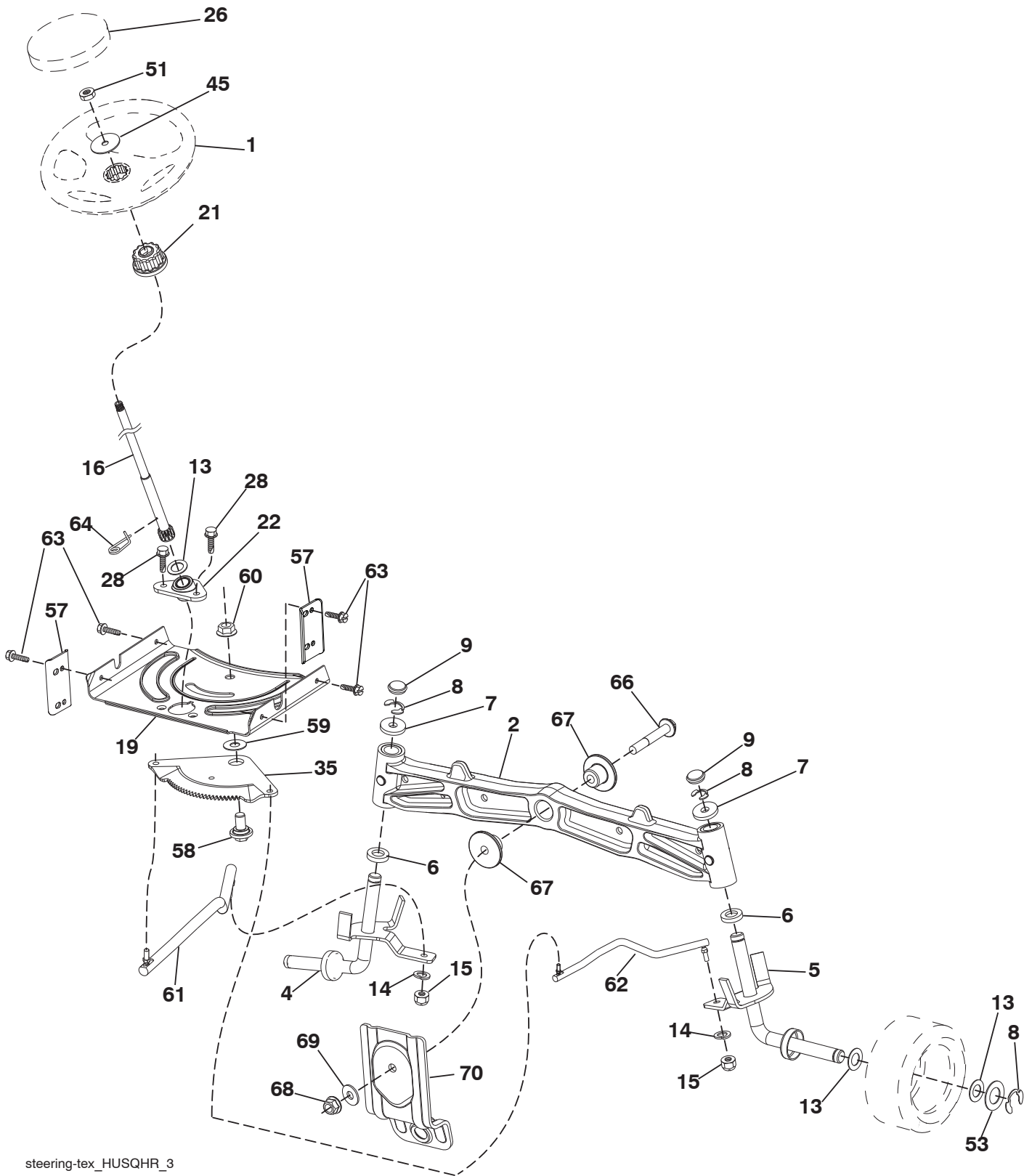
Briggs & Stratton            1-800-233-3723

### Engine Power Rating Information

The gross power rating for individual gas engine models is labeled in accordance with SAE (Society of Automotive Engineers) code J1940 (Small Engine Power & Torque Rating Procedure), and rating performance has been obtained and corrected in accordance with SAE J1995 (Revision 2002-05). Torque values are derived at 3060 RPM; horsepower values are derived at 3600 RPM. Actual gross engine power will be lower and is affected by, among other things, ambient operating conditions and engine-to-engine variability. Given both the wide array of products on which engines are placed and the variety of environmental issues applicable to operating the equipment, the gas engine will not develop the rated gross power when used in a given piece of power equipment (actual "on-site" or net power). This difference is due to a variety of factors including, but not limited to, accessories (air cleaner, exhaust, charging, cooling, carburetor, fuel pump, etc.), application limitations, ambient operating conditions (temperature, humidity, altitude), and engine-to-engine variability. Due to manufacturing and capacity limitations, Briggs & Stratton may substitute an engine of higher rated power for this Series engine.

# TRACTOR -- MODEL NUMBER YTH2042 (289610)

## STEERING ASSEMBLY



steering-tex\_HUSQHR\_3

# TRACTOR -- MODEL NUMBER YTH2042 (289610)

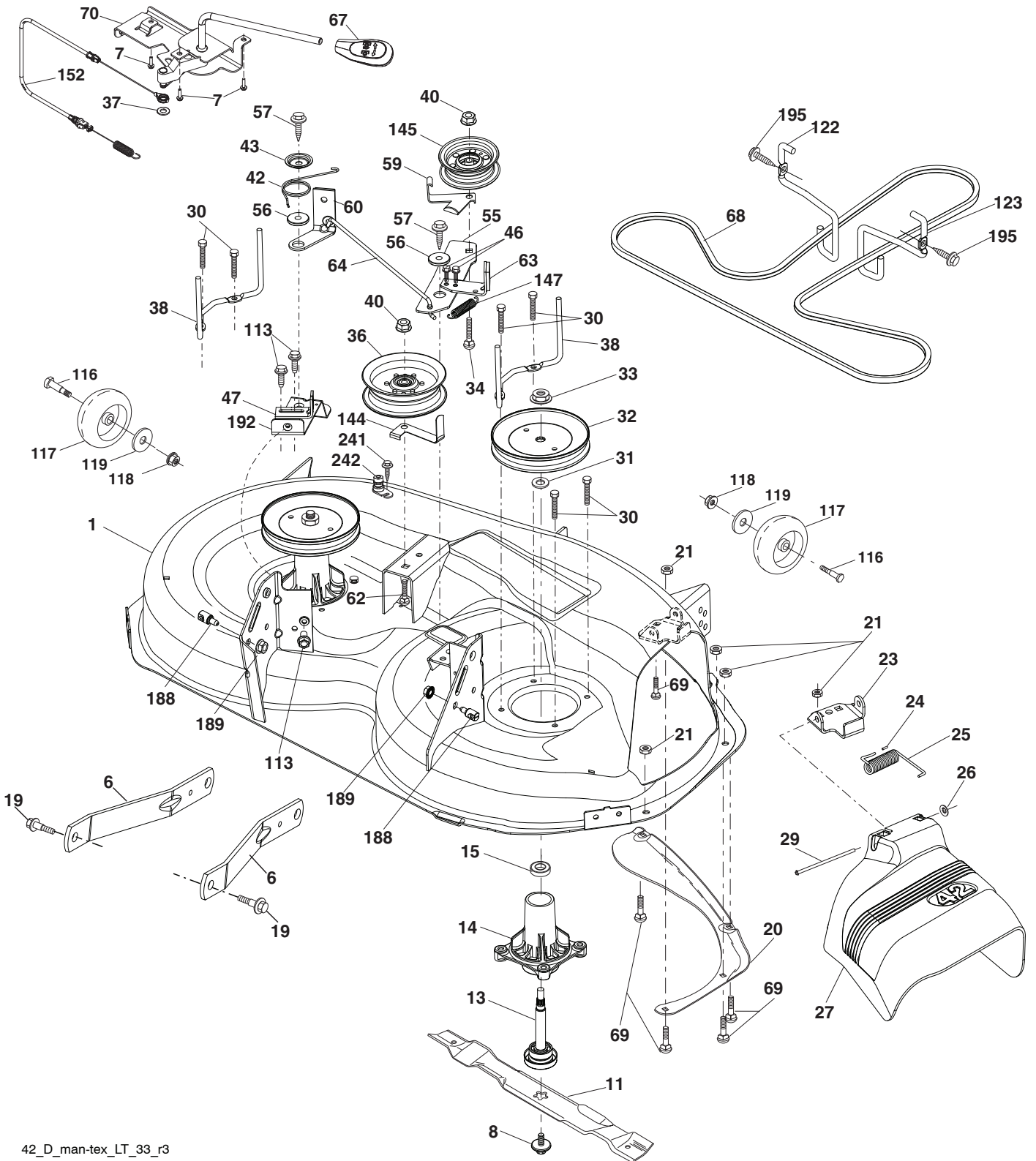
## STEERING ASSEMBLY

KEY NO.	PART NO.	DESCRIPTION
1	532 42 34-69	Wheel, Steering
2	532 19 59-68	Axle Asm., Front
4	532 40 30-87	Spindle Asm., LH
5	532 40 30-88	Spindle Asm., RH
6	532 12 49-31	Bearing, Race Thrust Harden
7	532 12 17-48	Washer 25/32 x 1-5/8 x 16 Ga.
8	812 00 00-29	Ring, Klip #T5304-75
9	532 12 12-32	Cap, Spindle
13	532 12 17-49	Washer 25/32 x 1-1/4 x 16 Ga.
14	810 04 06-00	Washer, Lock Hvy Hlcl Spr 3/8
15	873 54 06-00	Nut, Crown Lock 3/8-24 unf
16	532 40 82-19	Shaft Steering
19	532 19 47-29	Plate Steering
21	532 18 67-37	Adapter, Wheel Steering
22	532 42 05-37	Strg. Supt. Lower
26	532 41 59-87	Insert, Wheel Steering
28	817 00 06-12	Screw 3/8-16 x 3/4
35	532 19 47-32	Gear, Sector Plate
45	819 18 38-12	Washer 9/16 ID x 2-3/8 OD 12 GZIN
51	873 94 08-00	Nut Hex Jam Toplock 1/2-20
53	532 18 89-67	Washer Hardened .793 x 1.637 x .060
57	532 40 74-65	Bracket Upstop
58	532 19 47-47	Bolt Shoulder Sector Pivot CFM
59	532 19 47-48	Washer Thrust Sector Steering
60	873 97 10-00	Nut Flange Lock 5/8-11
61	532 19 47-40	Draglink, LH
62	532 19 47-41	Draglink, RH
63	817 00 05-12	Screw 5/16-18 x 3/4
64	532 19 98-49	Retainer Clip Spring Steering
66	871 02 07-48	Bolt Hex Fghd 7/16-14 x 3 Serr
67	532 19 47-37	Bushing PM Front Axle
68	873 90 07-00	Nut Lock Flange 7/16-14 Gr. 5
69	532 19 91-62	Washer 1.5 x .505 x .118
70	532 19 61-97	Bracket Deck Susp. Front

**NOTE:** All component dimensions given in U.S. inches  
1 inch = 25.4 mm

# TRACTOR -- MODEL NUMBER YTH2042 (289610)

## MOWER DECK



42\_D\_man-tex\_LT\_33\_r3

## TRACTOR - - MODEL NUMBER YTH2042 (289610)

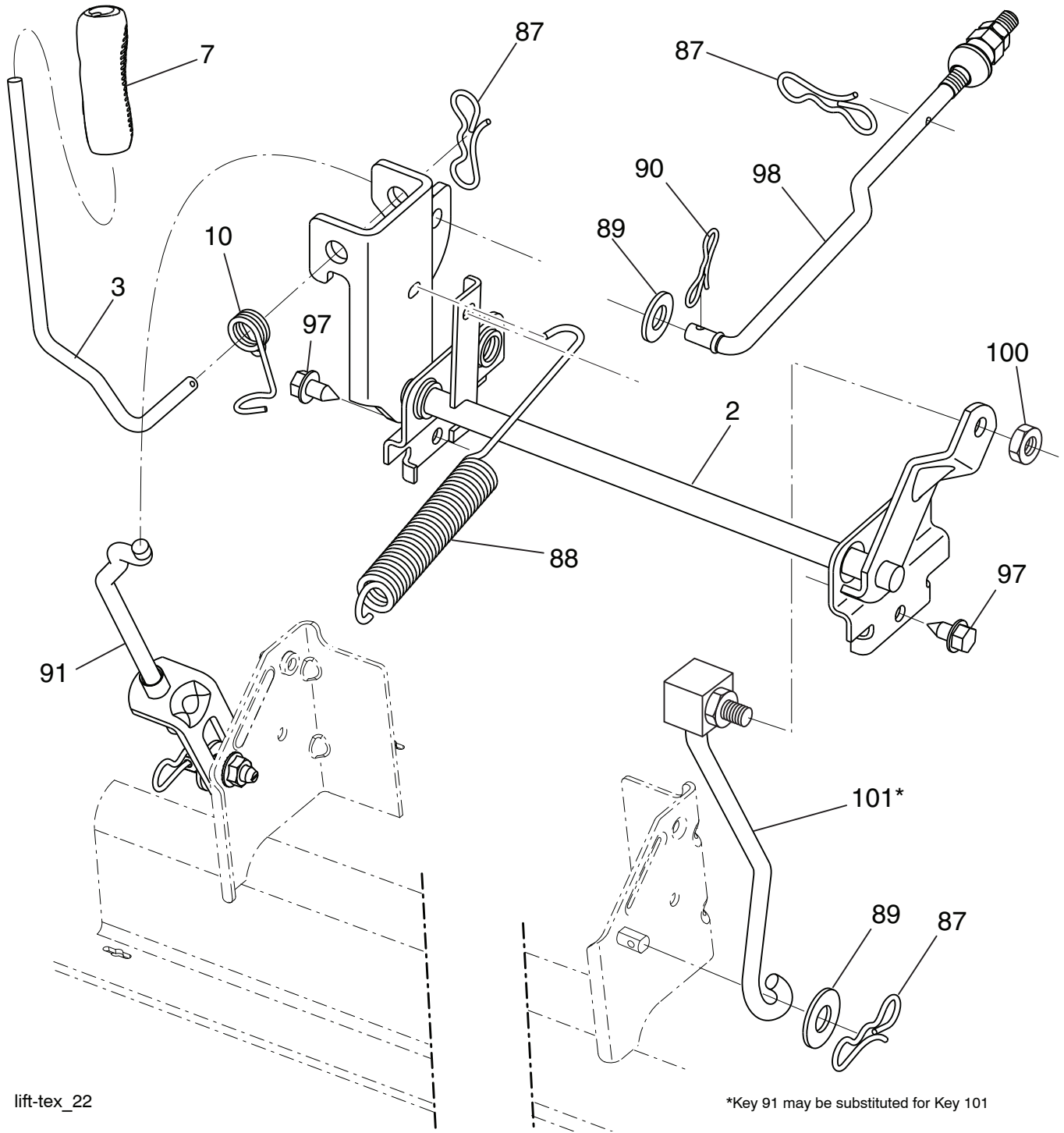
### MOWER DECK

KEY NO.	PART NO.	DESCRIPTION	KEY NO.	PART NO.	DESCRIPTION
1	532 40 29-99	Mower Housing	56	532 19 90-92	Spacer, Retainer
6	532 19 51-86	Arm Suspension	57	817 00 06-16	Screw 3/8-16 x 1
7	532 41 63-58	Screw #10 x .750 BOS Thread	59	532 14 10-43	Guard, Tuv Idler
8	532 19 30-03	Bolt/Washer Asm 7/16-20 unf	60	532 19 72-61	Arm Brake Mower
11	532 13 89-71	Blade, 42" Hi-Lift (For bagging or discharge)	62	872 11 06-16	Bolt Rd Hd Sq Nk 3/8-16 unc x 2
--	532 13 41-49	Blade, 42" Mulching Std (For mulching mowers only)	63	532 19 94-77	Arm Brake Mower
--	532 13 97-75	Blade, 42" Mulching Premium (For better wear when mulching)	64	532 19 99-18	Link Brake
--	532 42 47-52	Blade 42SP" 3N1	67	532 40 30-12	Handle Clutch Cable
--	532 42 27-19	Blade 42SP" 3N1 Premium	68	532 42 96-36	V-Belt
13	532 19 28-72	Shaft Assembly, Mandrel	69	872 14 05-05	Bolt
14	532 18 72-81	Housing, Mandrel	70	532 40 65-63	Clutch Asm Manual
15	532 11 04-85	Bearing, Ball, Mandrel	113	817 00 05-10	Screw 5/16-18
19	532 19 65-39	Bolt, Shoulder	116	532 12 48-42	Bolt, Shoulder
20	532 15 97-70	Baffle, Vortex	117	532 18 86-06	Wheel, Gauge
21	873 68 05-00	Nut, Crownlock 5/16-18 unc	118	873 93 06-00	Nut, Crownlock 3/8-1
23	532 19 25-57	Bracket, Deflector	119	819 12 14-14	Washer 13/32 x 7/8 x 14 Ga.
24	532 10 53-04	Cap, Sleeve	122	532 19 72-58	Keeper Belt Engine LH
25	532 19 70-26	Spring, Torsion, Deflector	123	532 19 72-59	Keeper Belt Engine RH
26	532 11 04-52	Nut, Push	144	532 19 92-04	Keeper Belt
27	532 40 30-04	Shield, Deflector	145	532 19 31-97	Pulley Idler
29	532 13 14-91	Rod, Hinge	147	532 40 19-71	Spring Return
30	532 17 39-84	Screw Thdrol Rolling Wsh Hd	152	532 43 51-10	Manual Clutch Cable
31	532 18 76-90	Washer, Spacer	188	532 19 51-61	Stud Fastener
32	532 19 74-73	Pulley, Mandrel	189	873 90 05-00	Nut Lock Hex Flange
33	532 40 02-34	Nut, Toplock, Flanged	192	532 19 72-60	Bracket Brake Stand LH
34	872 11 06-12	Bolt Carr Sh. 3/8-16 x 1-1/2 Gr. 5	195	817 00 06-12	Screw 3/8-16 x 3/4
36	532 19 73-79	Pulley, Idler, Flat	241	532 15 29-27	Screw TT #10-32 5 3/8 Flange
37	819 13 13-16	Washer	242	532 41 55-98	Port Washout
38	532 43 25-20	Keeper Belt LH Mandrel	--	532 41 64-05	Coupling Quick connect
40	873 90 06-00	Nut, Lock Flg. 3/8-16 unc	--	532 19 28-70	Mandrel Assembly (Includes housing, shaft assembly, and bearing only - pulley/nut/washer and blade bolt/washers not included)
42	532 19 84-10	Spring Torsion Brake	--	532 43 29-37	Replacement Mower, Complete
43	532 19 72-56	Spring Torsion Retainer			
46	532 13 77-29	Screw Thd Roll 1/4-20 x 5/8			
47	532 19 72-50	Bracket Clutch Cable			
55	532 19 72-49	Arm, Idler			

**NOTE:** All component dimensions given in U.S. inches  
1 inch = 25.4 mm

# TRACTOR -- MODEL NUMBER YTH2042 (289610)

## MOWER LIFT



lift-tex\_22

\*Key 91 may be substituted for Key 101

KEY NO.	PART NO.	DESCRIPTION
2	532 42 20-27	Shaft Asm., Lift
3	532 19 52-31	Lever Asm., Lift RH
7	532 41 15-55	Grip, Lever
10	532 19 63-14	Spring Torsion
87	532 19 42-09	Pin Cotter 7/16 Bow Tie Lock
88	532 41 07-10	Spring Lift Assist
89	819 19 19-12	Washer Clear Zinc
90	532 19 42-08	Pin Cotter 5/16 Bow Tie Lock

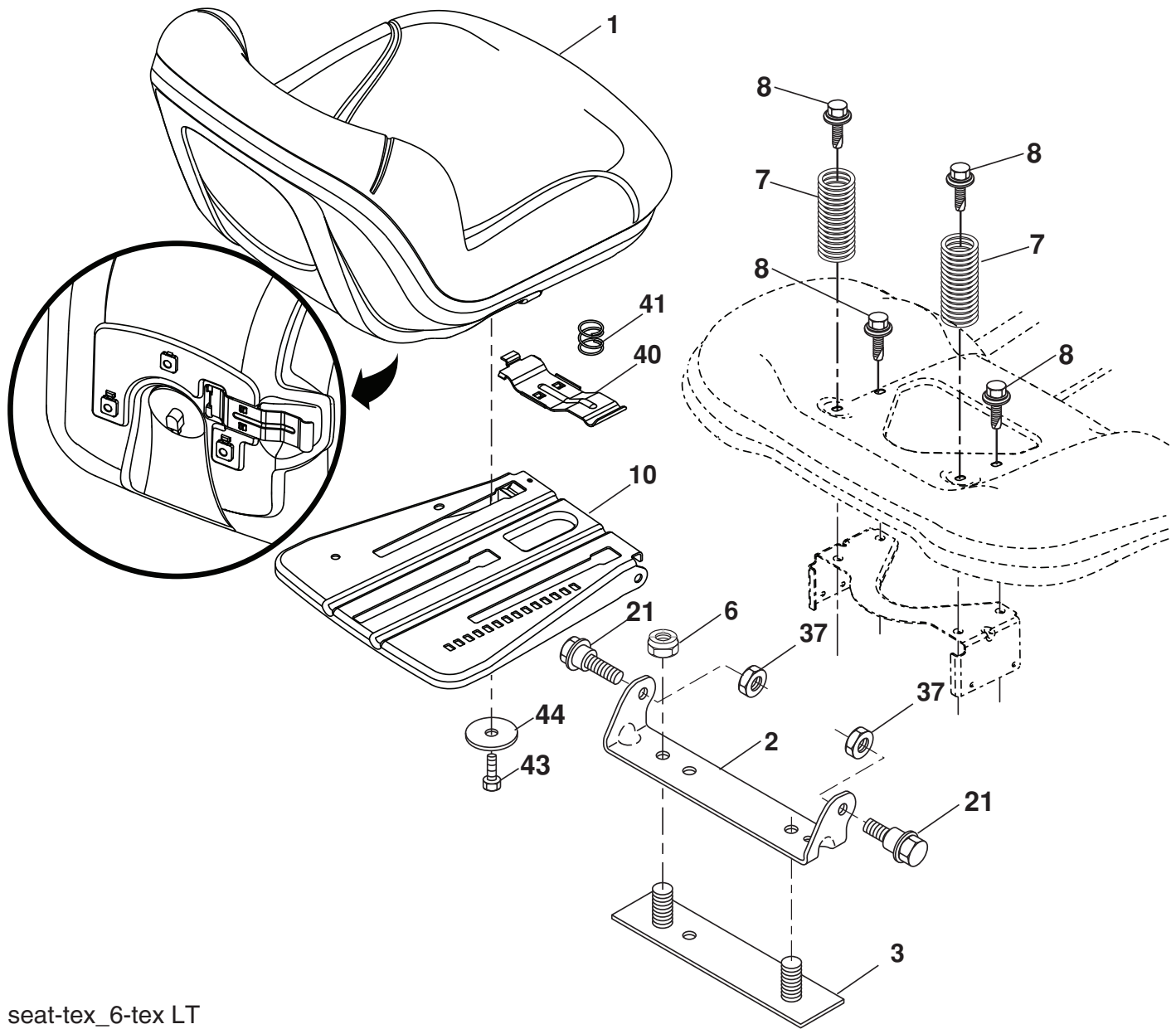
KEY NO.	PART NO.	DESCRIPTION
91	532 19 51-81	Link Asm Lift LH Rear
97	817 00 06-12	Screw Hex Wsh. THDR 3/8-16 x 3/4
98	532 19 52-70	Link Lift Susp. Front Mower
100	873 93 06-00	Nut Centerlock 3/8-16 unc
101	532 40 70-03	Link Asm. Lift FXD

**NOTE:** All component dimensions given in U.S. inches  
1 inch = 25.4 mm



# TRACTOR -- MODEL NUMBER YTH2042 (289610)

## SEAT ASSEMBLY



seat-tex\_6-tex LT

KEY NO.	PART NO.	DESCRIPTION
1	532 42 40-67	Seat
2	532 18 01-66	Bracket Pivot Fender
3	532 14 06-75	Strap, Asm Fender
6	873 80 06-00	Nut, Lock w/Ins. 3/8-16 unc
7	532 12 41-81	Spring, Seat Cprsn
8	532 17 18-77	Bolt 5/16-18 unc x 3/4 w/Sems
10	532 19 69-77	Pan, Seat
21	532 17 18-52	Bolt, Shoulder 5/16-18

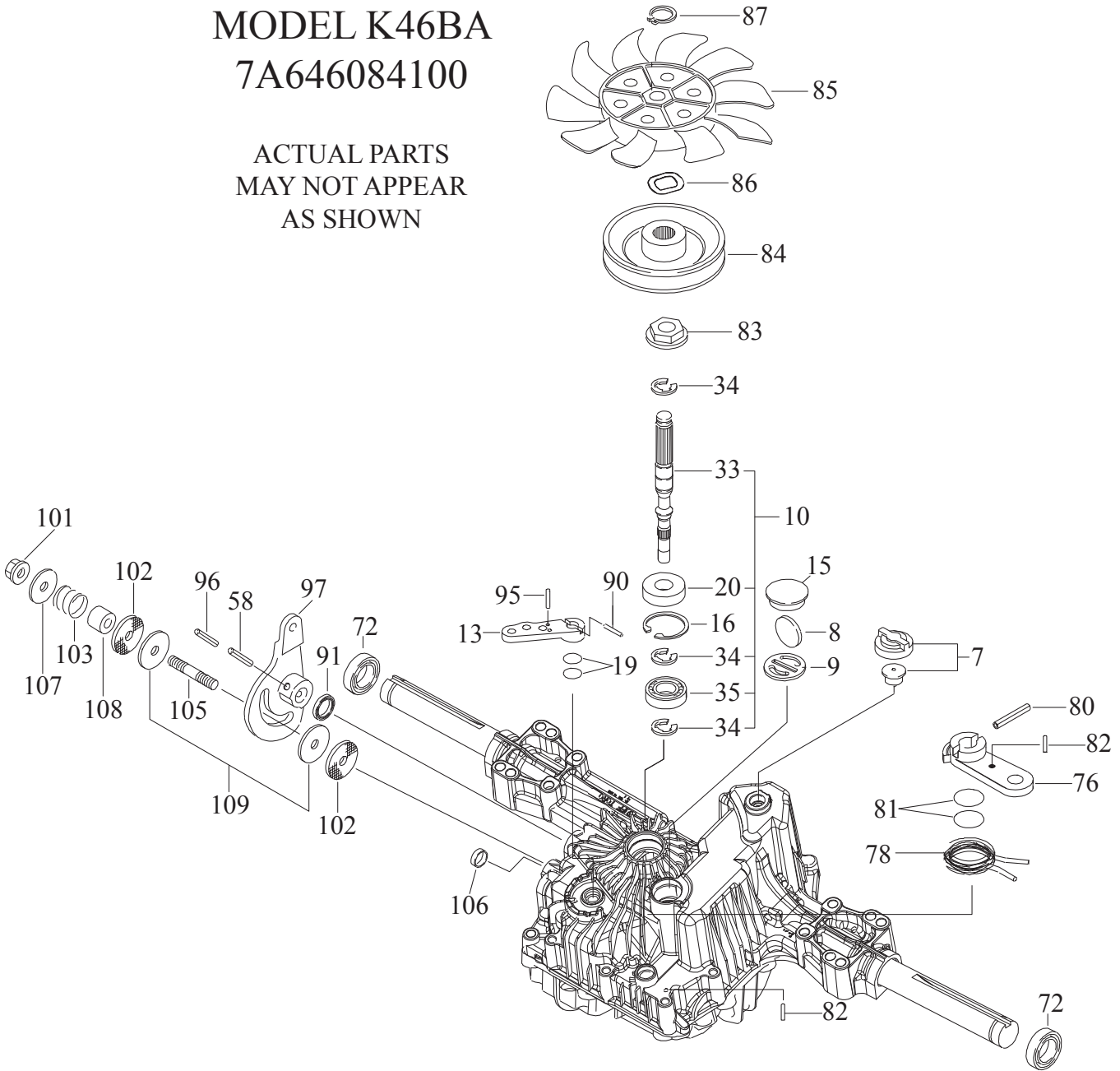
KEY NO.	PART NO.	DESCRIPTION
37	873 80 05-00	Nut, Lock 5/16-18 unc
40	532 19 76-61	Handle Slide Seat
41	532 19 82-00	Spring Latch Seat
43	874 76 06-12	Bolt Fin Hex 3/8-16 unc x 3/4
44	819 13 38-12	Washer 13/32 x 2-3/8 x 12 Ga.

**NOTE:** All component dimensions given in U.S. inches  
1 inch = 25.4 mm

**TRACTOR - - MODEL NUMBER YTH2042 (289610)**  
**TUFFTORQ TRANSAXLE MODEL NUMBER K46BA**

**MODEL K46BA**  
**7A646084100**

ACTUAL PARTS  
MAY NOT APPEAR  
AS SHOWN



**TRACTOR - - MODEL NUMBER YTH2042 (289610)  
TUFFTORQ TRANSAXLE MODEL NUMBER K46BA**

<b>KEY NO.</b>	<b>PART NO.</b>	<b>DESCRIPTION</b>
7	532 41 43-95	Vent Valve 15
8	532 41 43-96	Magnet
9	532 41 43-97	Magnet Holder
10	532 41 59-23	Pump Shaft/Bearing Kit
13	532 41 43-98	Bypass Lever
15	532 41 43-99	Sealing Cap 30
16	532 41 44-00	Snap Ring C 35
19	532 41 44-01	O-Ring 1a P10a
20	532 41 44-02	Seal Tc 153507
33	532 41 44-03	Pump Shaft (Standard
34	532 41 44-04	E-Ring 15
35	532 41 44-05	Bearing 6202c3
58	532 41 44-06	Roll Pin 6 * 40
72	532 41 44-07	Seal 19 * 32 * 8
76	532 41 44-08	Brake Lever
78	532 41 44-09	Brake Return Spring
80	532 41 44-10	Spring Pin 5 * 32
81	532 41 44-11	O-Ring 1a P12
82	532 41 44-12	Spring Pin 4 * 16
83	532 41 44-13	Spine Collar
84	532 41 44-14	Pulley L
85	532 41 44-15	Fan, Black
86	532 41 44-16	Wave Washer
87	532 41 44-17	Snap Ring
90	532 41 44-18	Spring Pin 3.0a * 20
91	532 41 44-19	Oil Seal 16 * 22 * 03
95	532 41 58-50	Spring Pin 3.0a * 16
96	532 41 44-20	Roll Pin 3.5 * 40
97	532 41 44-21	Control Lever
101	532 41 42-16	Lock Nut 10
102	532 41 44-23	Washer 10 * 40 * 4
103	532 41 44-24	Spring
105	532 41 44-25	Stud 10 * 60
106	532 41 44-26	Sealing Cap 18
107	532 41 44-27	Washer 10 * 36 * 2.8
108	532 41 44-28	Collar 10 * 20 * 17
109	532 41 44-29	Friction Plate Kit

**NOTE:** All component dimensions given in U.S. inches  
1 inch = 25.4 mm

# TRACTOR - - MODEL NUMBER YTH2042 (289610)

## BRIGGS ENGINE - MODEL NUMBER 331777, TYPE NUMBER 1372-B1

48 SHORT BLOCK

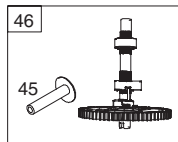
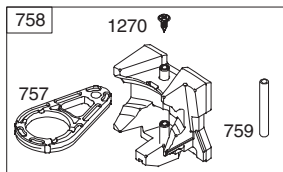
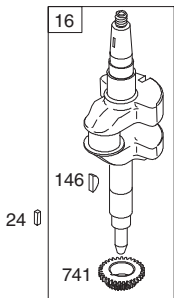
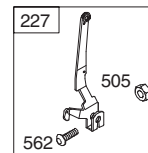
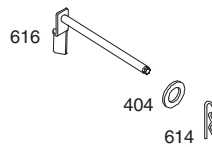
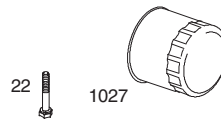
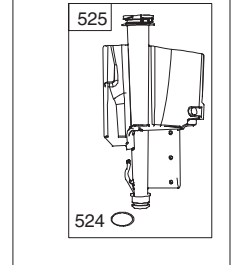
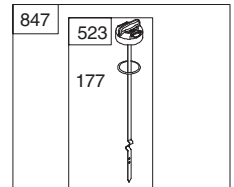
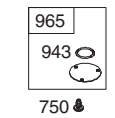
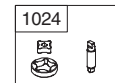
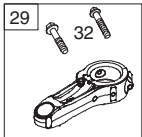
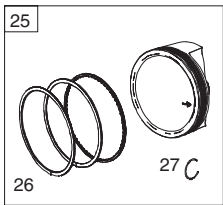
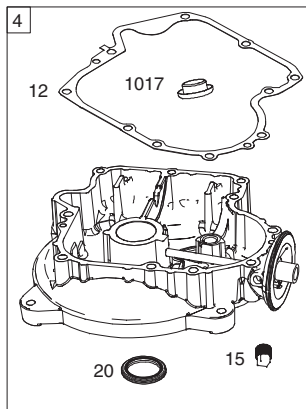
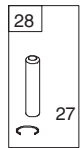
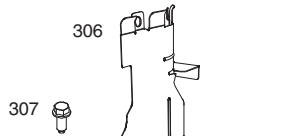
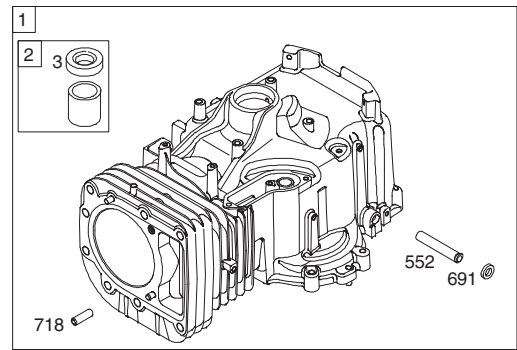
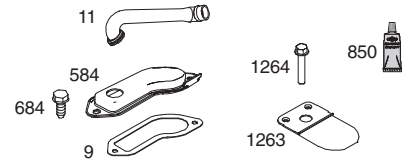
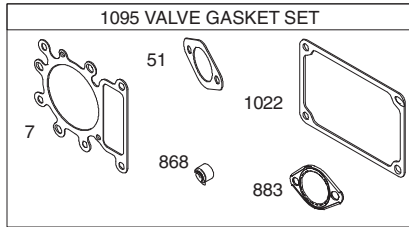
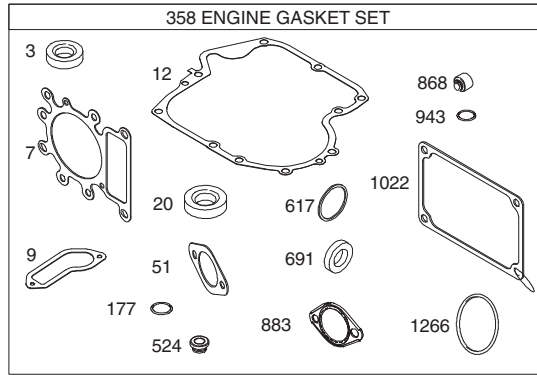
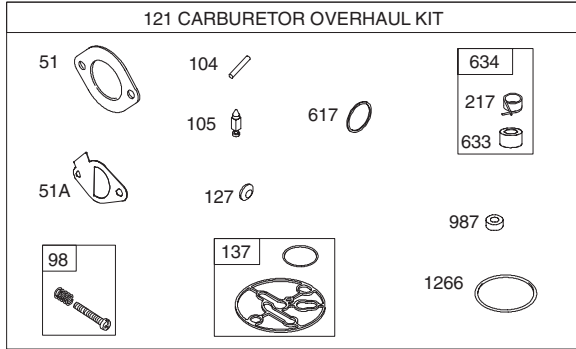
1058 OPERATOR'S MANUAL

1329 REPLACEMENT ENGINE

1330 REPAIR MANUAL

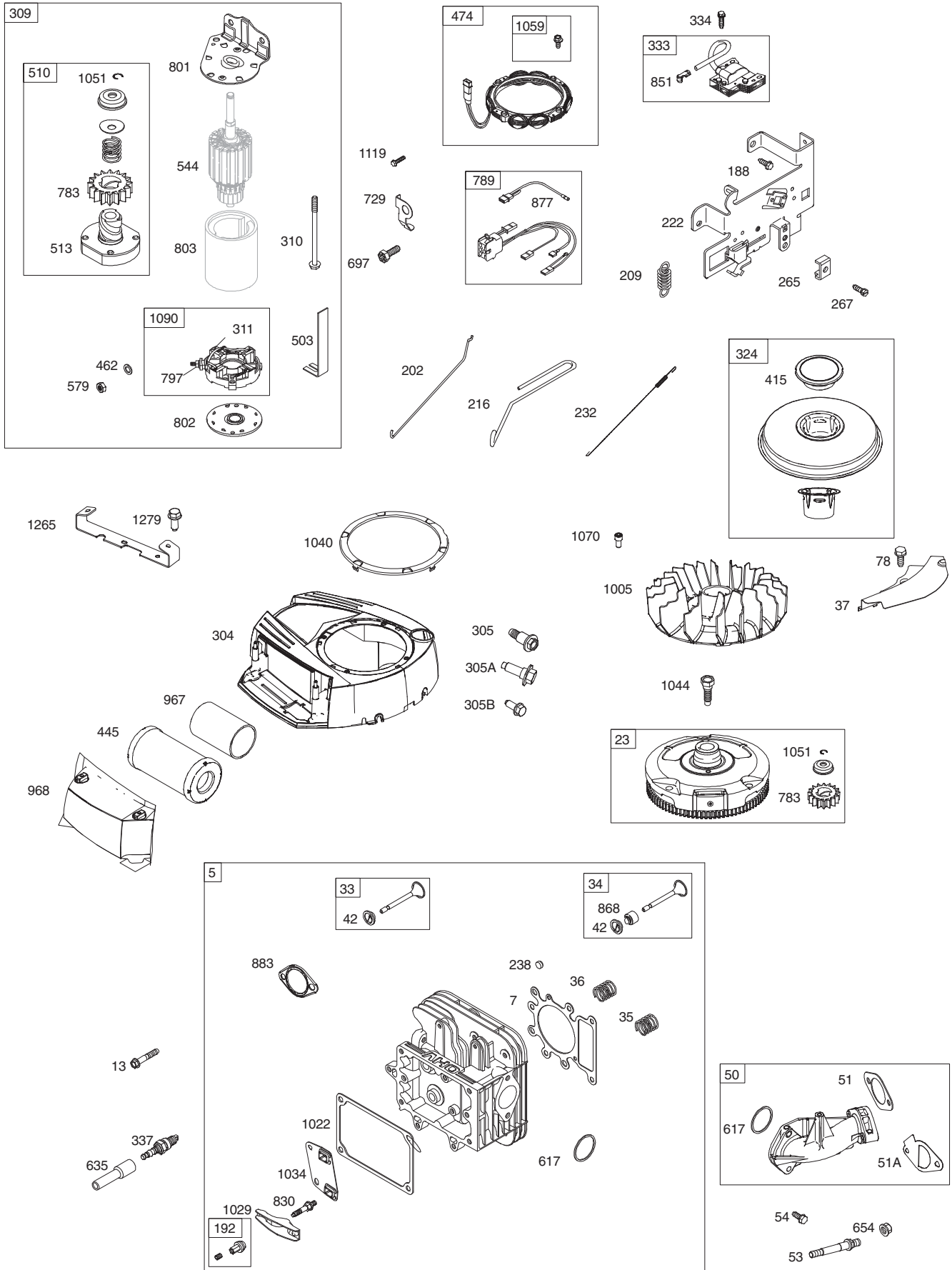
LIQUID GASKET AND THE BREATHER GASKET ARE INTERCHANGEABLE

1036 EMISSIONS LABEL

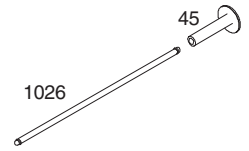
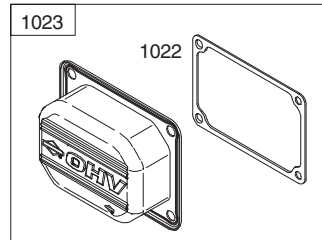
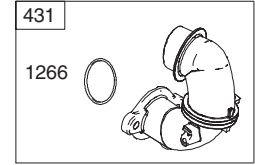
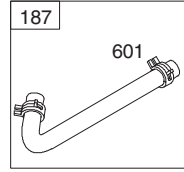
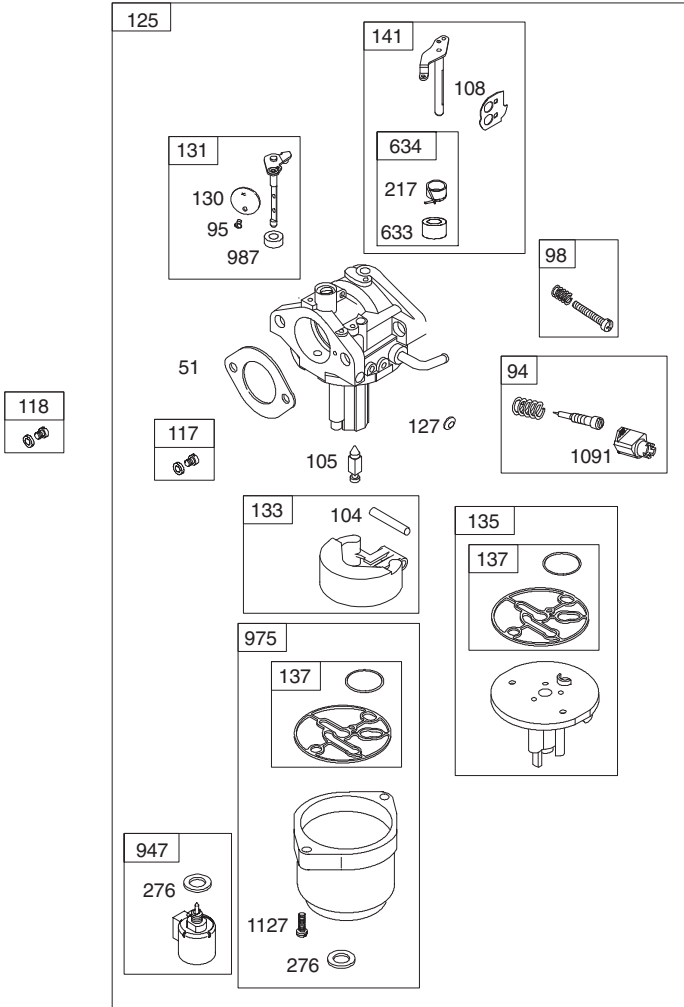


# TRACTOR - - MODEL NUMBER YTH2042 (289610)

## BRIGGS ENGINE - MODEL NUMBER 331777, TYPE NUMBER 1372-B1



**TRACTOR - - MODEL NUMBER YTH2042 (289610)**  
**BRIGGS ENGINE - MODEL NUMBER 331777, TYPE NUMBER 1372-B1**



## TRACTOR - - MODEL NUMBER YTH2042 (289610)

### BRIGGS ENGINE - MODEL NUMBER 331777, TYPE NUMBER 1372-B1

KEY NO.	PART NO.	DESCRIPTION	KEY NO.	PART NO.	DESCRIPTION
1	796010	Cylinder Assembly	135	698780	Tube-Fuel Transfer
2	399265	Bushing/Seal Kit (Magneto Side)	137	♣ 698781	Gasket-Float Bowl
3	• 391086s	Seal-Oil (Magneto Side)	141	792777	Kit-Choke Shaft
4	697106	Sump-Engine	146	691639	Key-Timing
5	796025	Head-Cylinder	186	794873	Connector-Hose (Intake Manifold)
7	♦ 796584	Gasket-Cylinder Head	187	791805	Line-Fuel (Formed) (Cut to Required Length)
11	794683	Tube-Breather	188	691693	Screw (Control Bracket)
12	• 697110	Gasket-Crankcase	192	691986	Adjuster-Rocker Arm
13	793988	Screw (Cylinder Head)	202	691841	Link-Mechanical Governor
15	690946	Plug-Oil Drain	209	692208	Spring-Governor (Green)
16	797579	Crankshaft	216	691840	Link-Choke
20	• 795387	Seal-Oil (PTO Side)	217	695409	Spring-Choke Return
22	692125	Screw (Crankcase Cover/Sump)	222	694042	Bracket-Control
23	698281	Flywheel	227	691374	Lever-Governor Control
24	222698s	Key-Flywheel	232	691842	Spring-Governor Link
25	796172	Piston Assembly (Standard)	238	691843	Cap-Valve
	796173	Piston Assembly (.020" Oversize)	240	394358s	Filter-Fuel
26	791936	Ring Set (Standard)	265	691024	Clamp-Casing
	792649	Ring Set (.020" Oversize)	267	794904	Screw (Casing Clamp)
27	698469	Lock-Piston Pin	276	695410	Washer-Sealing
28	796007	Pin-Piston	304	796416	Blower Housing
29	794122	Rod-Connecting	305	697102	Screw (Blower Housing) (Long)
32	791118	Screw (Connecting Rod)	305A	793376	Screw (Blower Housing) (Short)
33	792868	Valve-Exhaust	306	796006	Shield-Cylinder
34	791935	Valve-Intake	307	691003	Screw (Cylinder Shield)
35	691279	Spring-Valve (Intake)	309	693551	Motor-Starter
36	691279	Spring-Valve (Exhaust)	310	690323	Screw (Starter Motor)
37	697352	Guard-Flywheel	324	796308	Screen/Cup Assembly
42	499586	Keeper-Valve	333	795315	Armature-Magneto
43	691968	Slinger-Governor/Oil	334	691061	Screw (Magneto Armature)
45	690564	Tappet-Valve	337	491055s	Plug-Spark
46	793880	Gear-Cam	358	796187	Gasket Set-Engine
48	697761	Short Block	404	691691	Washer (Governor Crank)
50	796180	Manifold-Intake	415	690283	Plug (Intake Manifold)
51♦♣	692137	Gasket-Intake	415A	794129	Plug (Cover/Retainer)
51A	796081	Gasket-Intake	431	697122	Elbow-Intake
53	690227	Stud (Carburetor)	445	698083	Filter-Air Cleaner Cartridge
54	691148	Screw (Intake Manifold)	462	691261	Washer (Starter Cable)
78	691003	Screw (Flywheel Guard)	474	696459	Alternator
94	793610	Kit-Idle Mixture	503	691532	Strap-Starter
95	690718	Screw (Throttle Valve)	505	691251	Nut (Governor Control Lever)
98	695408	Kit-Idle Speed	510	693699	Drive-Starter
104	♣ 694918	Pin-Float Hinge	513	692024	Clutch-Drive
105	♣ 696136	Valve-Float Needle	523	699908	Dipstick
108	695419	Valve-Choke	524	• 691032	Seal-Dipstick Tube
117	843099	Jet-Main (Standard)	525	697184	Tube-Dipstick
118	790890	Jet-Main (High Altitude)	544		Armature-Starter (Order Starter Motor, Reference 309, 693551, for replacement)
121	796184	Kit-Carburetor Overhaul	552	697144	Bushing-Governor Crank
125	796109	Carburetor	562	691119	Screw (Governor Control Lever)
127	♣ 690727	Plug-Welch	579	691029	Nut (Starter Cable)
130	699500	Valve-Throttle			
131	699501	Kit-Throttle Shaft			
133	694914	Float-Carburetor			

# TRACTOR - - MODEL NUMBER YTH2042 (289610)

## BRIGGS ENGINE - MODEL NUMBER 331777, TYPE NUMBER 1372-B1

KEY NO.	PART NO.	DESCRIPTION	KEY NO.	PART NO.	DESCRIPTION
584	794682	Cover-Breather Passage (Use with Liquid Sealant, Reference 850)	1026	692003	Rod-Push (Intake)
585	• 697109	Gasket-Breather Passage		692011	Rod-Push (Exhaust)
601	791850	Hose-Clamp (Green)	1029	691751	Arm-Rocker
614	691620	Pin-Cotter	1034	690822	Guide-Push Rod
616	692012	Crank-Governor	1036		Label-Emissions (Available from a Briggs & Stratton Authorized Dealer)
617	♣ 692138	Seal-O Ring (Intake Manifold) (Red)	1040	698368	Plate-Trim
633	699813	Seal-Choke/Throttle Shaft (Choke Shaft)	1044	698139	Screw (Flywheel)
634	♣ 698779	Spring/Seal Assembly (Choke Shaft)	1051	691265	Ring-Retaining
635	691909	Boot-Spark Plug	1054	280275	Tie-Cable
643	698401	Retainer-Air Filter	1059	698516	Kit-Screw/Washer
654	690958	Nut (Carburetor)	1070	690363	Screw (Flywheel Fan)
684	697157	Screw (Breather Assembly)	1090	691293	Retainer-Brush
691	• 692407	Seal-Governor Shaft	1091	691333	Cap-Limiter
718	690959	Pin-Locating	1095	794152	Gasket Set-Valve
724	697478	Link-Starter Switch	1119	691183	Screw (Alternator)
729	691224	Clip-Wire	1127	695407	Screw (Float Bowl)
741	697128	Gear-Timing	1263	697124	Reed-Breather
757	793242	Link-Counterweight	1264	697104	Screw (Breather Reed)
758	793763	Counterweight	1266	♣ 691917	Seal-O Ring (Intake Elbow)
759	697392	Pin-Counterweight		(Red)	
783	693713	Gear-Pinion	1266A	♣ 697123	Seal-O Ring (Intake Elbow)
789	698329	Harness-Wiring	1267	697419	Latch-Blower Housing
797	693167	Nut (Brush Retainer)	1270	793243	Plug-AVS Counterweight
801	691283	Cap-Drive	1329	33177-1372-B1	Replacement Engine
802	691286	Cap-End	1330	272147	Repair Manual
803		Housing-Starter (Order Starter Motor, Reference 309, 693551, for replacement)			
830	691095	Stud-Rocker Arm			
842	• 691031	Seal-O Ring (Dipstick Tube)			
847	790442	Dipstick/Tube Assembly			
850	100106	Sealant-Liquid (Liquid Sealant is interchangeable with Breather Passage Gasket and/or Rocker Cover Gasket)			
851	692424	Terminal-Spark Plug			
868	♦ 690968	Seal-Valve			
883	• 692236	Gasket-Exhaust			
914	697551	Screw (Rocker Cover)			
947	699915	Solenoid-Fuel			
967	697015	Filter-Pre Cleaner			
968	698403	Cover-Air Cleaner			
975	699502	Bowl-Fuel			
987	♣ 698777	Seal-Throttle Shaft			
1005	796083	Fan-Flywheel			
1022	♦ 272475s	Gasket-Rocker Cover			
1023	797421	Cover-Rocker			

- Engine Gasket Set      Key No. 358
- ♦ Valve Gasket Set      Key No. 1095
- ♣ Carburetor Overhaul Kit      Key No. 121

NOTE: All component dimensions given in U.S. inches  
1 inch = 25.4 mm



---

# SERVICE NOTES

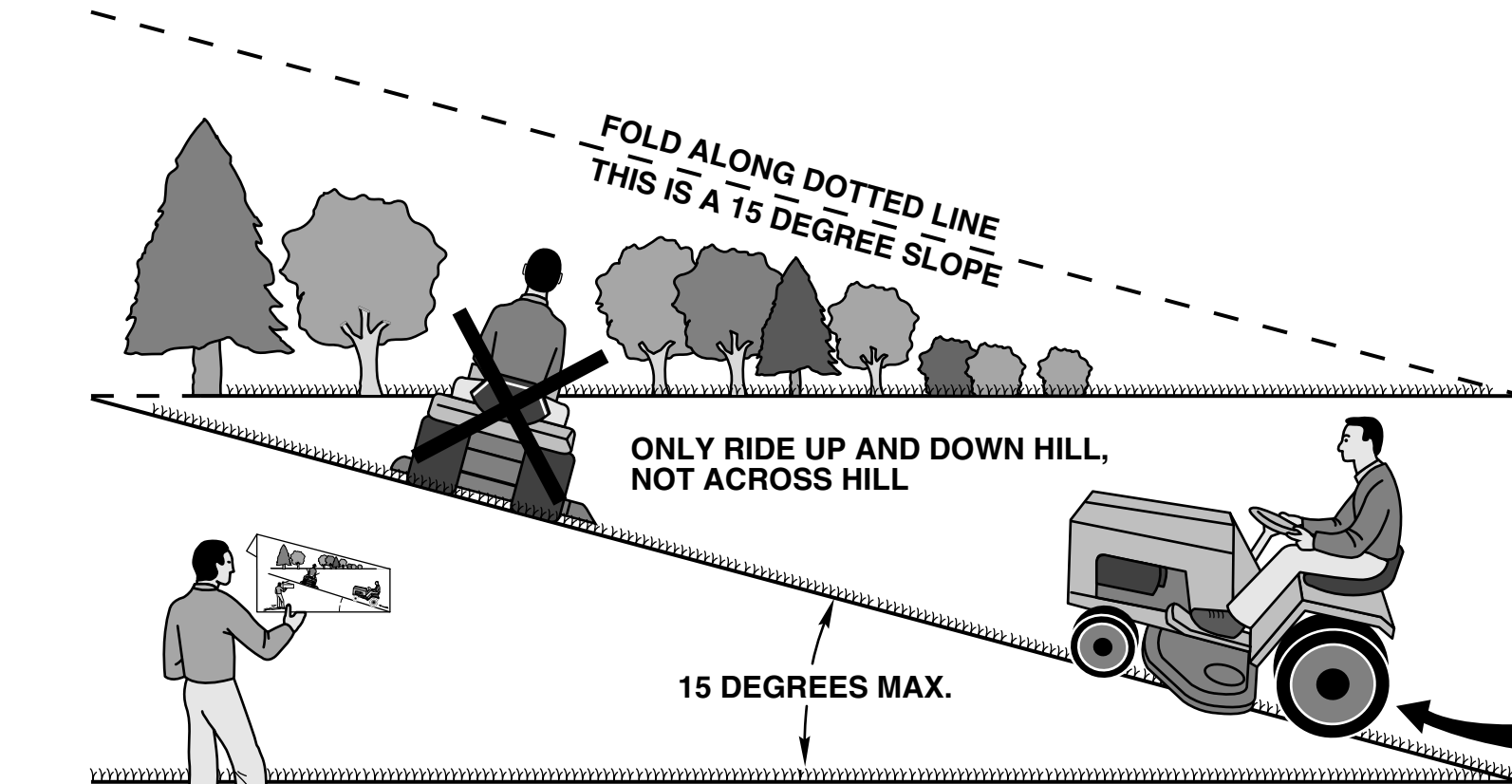
---

---

# SERVICE NOTES

---

# SUGGESTED GUIDE FOR SIGHTING SLOPES FOR SAFE OPERATION



**WARNING:** To avoid serious injury, operate your tractor up and down the face of slopes, never across the face. Do not mow slopes greater than 15 degrees. Make turns gradually to prevent tipping or loss of control. Exercise extreme caution when changing direction on slopes.

1. Fold this page along dotted line indicated above.
2. Hold page before you so that its left edge is vertically parallel to a tree trunk or other upright structure.
3. Sight across the fold in the direction of hill slope you want to measure.
4. Compare the angle of the fold with the slope of the hill.

