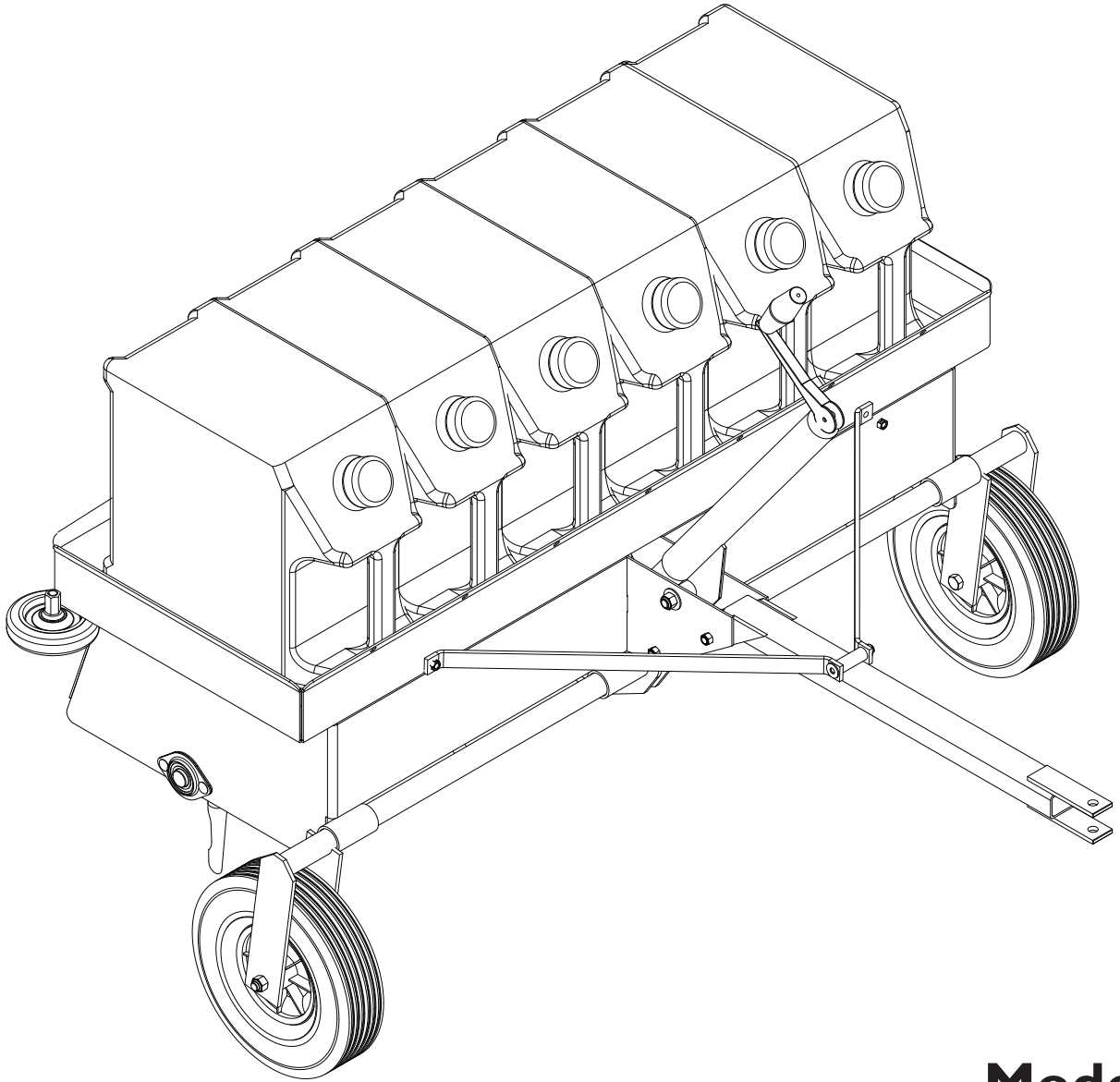


# Husqvarna

## Operator & Parts Manual



### Models

TA36 / 54000073

TA48CE / 968999236

Please read the operator's manual carefully and make sure you understand the instructions before using the machine.



# CONTENTS

---

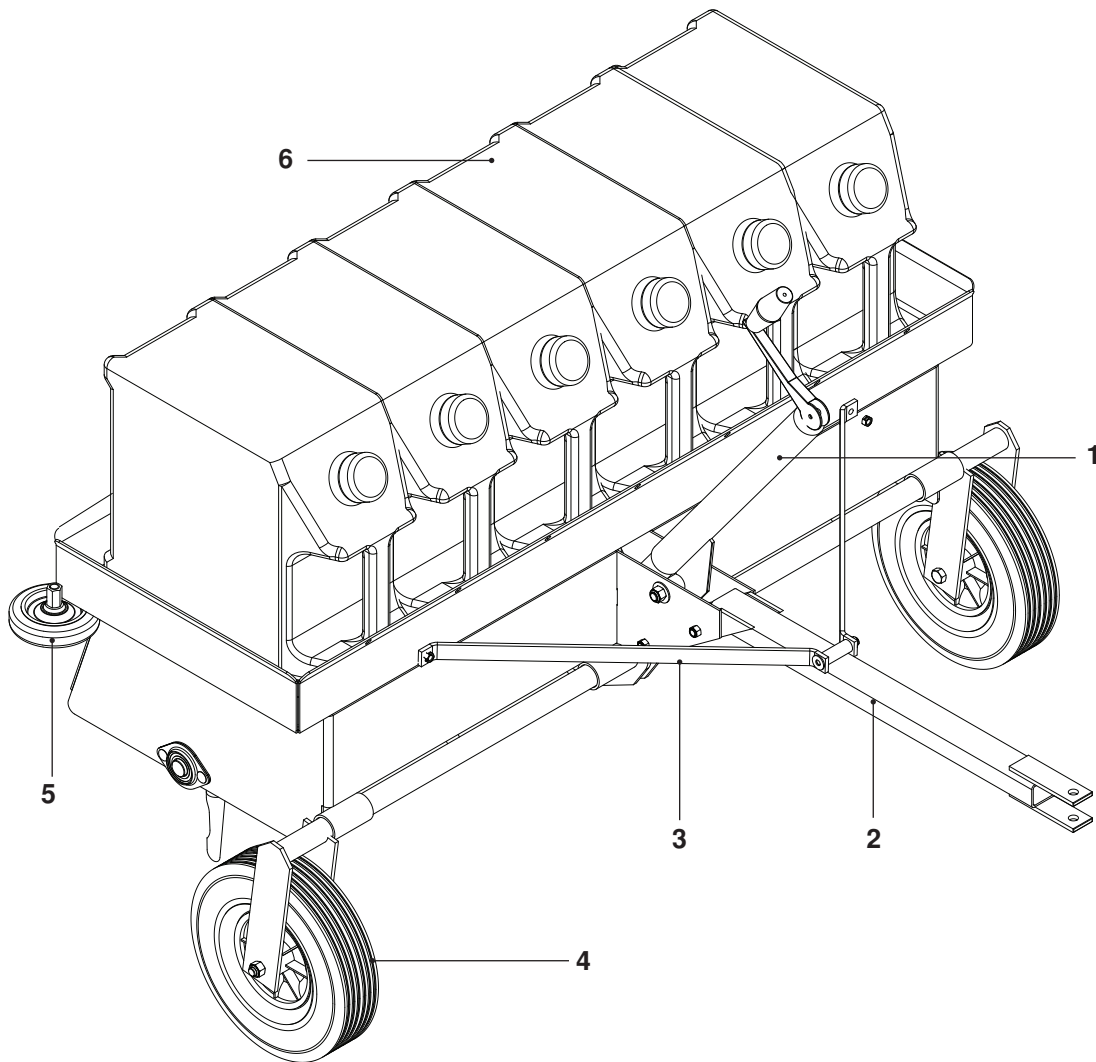
ASSEMBLY .....	4
OPERATION AND MAINTENANCE .....	8
SPECIFICATIONS	
TA36 .....	9
TA48CE .....	9
REPAIR PARTS	
TA36 .....	10
TA48CE .....	12

NOTE: ALL FASTENERS ARE GRADE 5 UNLESS OTHERWISE SPECIFIED.

# ASSEMBLY

Congratulations! You have just purchased the Husqvarna Towable Aerator - a precision-engineered product designed to provide maximum aeration performance and flexibility. Only a few simple steps are required to fully assemble the aerator. Please

read these instructions before beginning assembly. Assembly by two people is recommended. If you have questions, please contact your Husqvarna dealer or distributor.



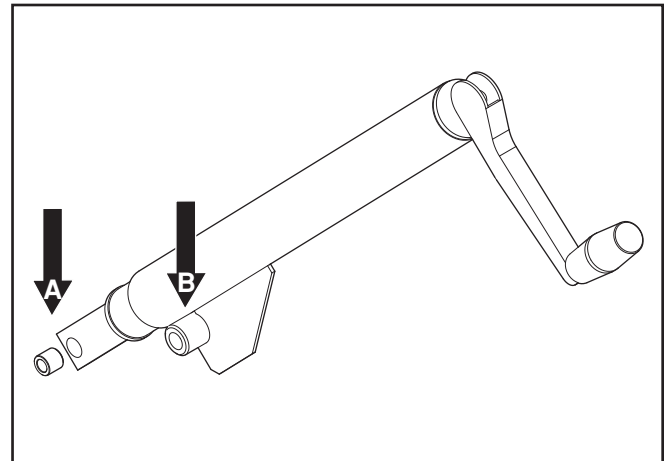
1. Jack Lift Assembly
2. Tow Bar
3. Tie Bars (TA48CE Only)
4. Transport Wheels
5. Tip Wheel
6. Weight Containers (Optional)

# ASSEMBLY

## TOOLS REQUIRED

- $\frac{3}{4}$ " Wrench (2)
- $\frac{9}{16}$ " Deep-well Socket (1)
- $\frac{9}{16}$ " Wrench (1)
- $\frac{1}{2}$ " Wrench (2)

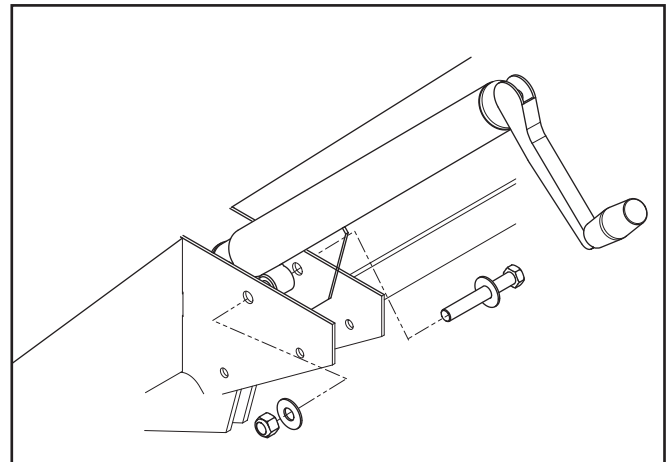
1. Check for any signs of damage that may have occurred during shipment
2. To install jack lift assembly, tip the aerator onto the back edge. Install the bushing in the hole (A) near end of the jack lift assembly.



8060-062

*Insert the jack shaft bushing*

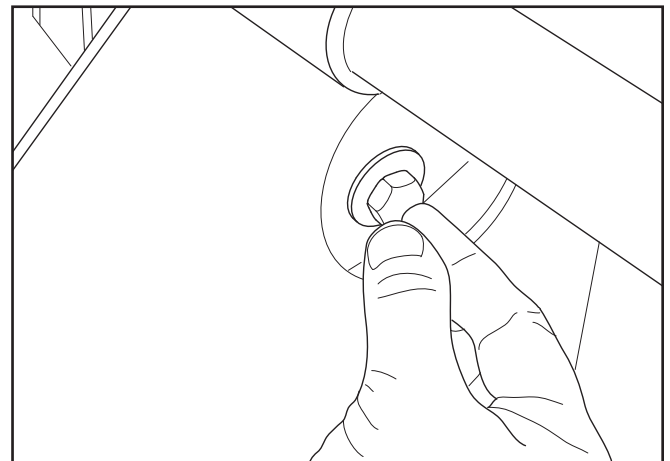
3. Slide lift jack assembly between the two frame mount brackets and align frame mount hole (B) with the lift assembly hole. Secure the assembly at hole (B) to the frame brackets using a  $\frac{1}{2}$ -13 bolt,  $\frac{1}{2}$ " washers and a  $\frac{1}{2}$ " lock nut.



8060-132

*Attach the jack assembly to the frame mount*

4. Align jack lift assembly hole (A) with clearance holes in frame and attach using  $\frac{3}{8}$ -16 x  $1\frac{1}{2}$  bolt, washers and nut. Tighten the  $\frac{1}{2}$ " bolt and  $\frac{3}{8}$ " bolt securely. The  $\frac{3}{8}$ " bolt will require a  $\frac{9}{16}$ " deep-well socket wrench.

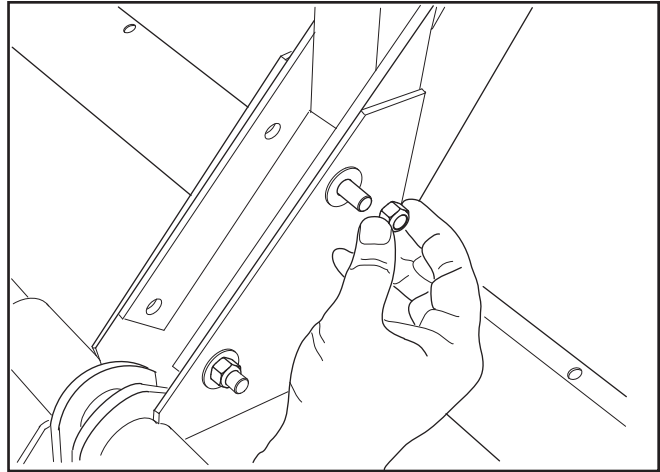


8060-066

*Clearance hole in frame*

# ASSEMBLY

- Slide the tongue into the frame mount bracket and align holes.
- Fasten the tongue to the frame with four  $\frac{3}{8}$ " x 1" bolts, washers and lock nuts. The washers should be fitted to the outside of the frame as shown. Tighten securely with a socket wrench.

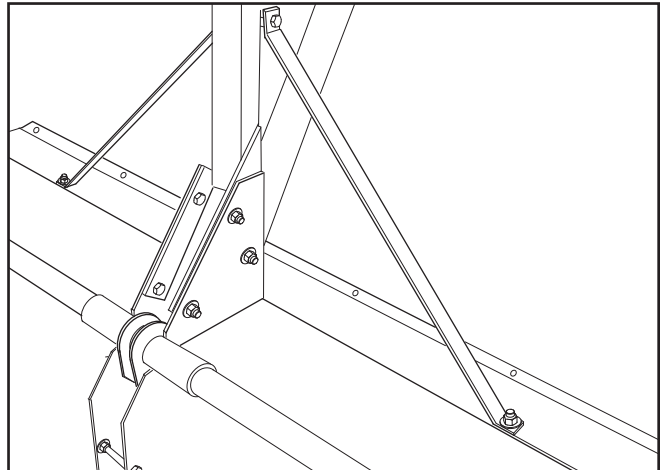


8060-067

Secure tow bar to frame

## TA12 Tie Bars

- Attach the tie bars to the aerator bed on each side of the tongue.



8060-068

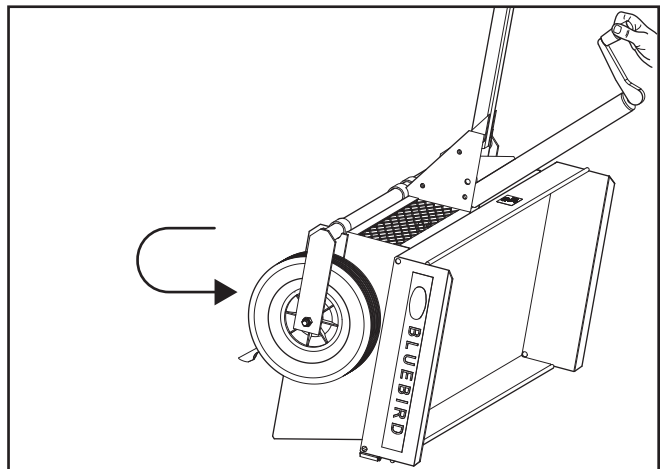
TA12 tie bars

- While the aerator is still in the tipped position, test the operation of jack lift assembly by raising the transport wheels to highest position.
- Lower the transport wheels fully and set the unit into the operating position.



### CAUTION!

The wheels should be fully extended or fully retracted. NEVER operate with wheels partially retracted, damage to the jack could result.



8060-068

TA12 tiebars

# ASSEMBLY

10. Add a small amount of oil to the lift jack. Oil should be added after every 25 hours of operation and after washing the unit.



## WARNING!

### TA12 KICKSTAND

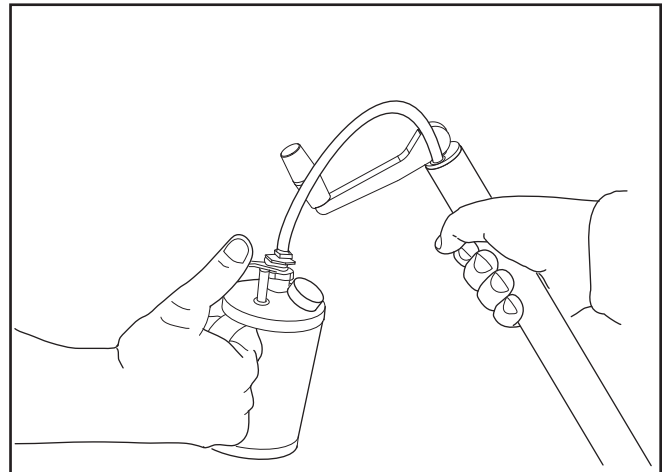
Failure to lower kickstand before detaching unit from tractor may cause unit to tip backwards quickly, causing personal injury.



## CAUTION!

### TA12 KICKSTAND

Always raise the kickstand before towing the unit. Towing with the kickstand down will cause damage.

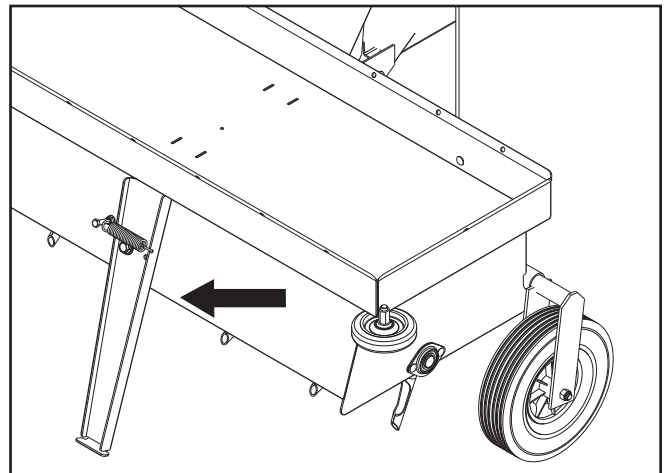


8060-071

Add oil to the lift jack

## TA48CE Kickstand

11. Before removing aerator from tractor and storing, park the unit on a hard, flat surface and lower the kick stand.



8060-113

TA48CE Kickstand

# OPERATION AND MAINTENANCE

---

To increase the depth of ground penetration, weights may be added into pan up to the limits shown in the specification section. Secure the weights into the pan if the unit is used on rough ground or on angled surfaces. Remove the weights from the pan before unhooking the aerator from the tractor.

When replacing worn or damaged tines, use included washers and torque to 15 ft./lbs.



# SPECIFICATIONS

---

## TA36

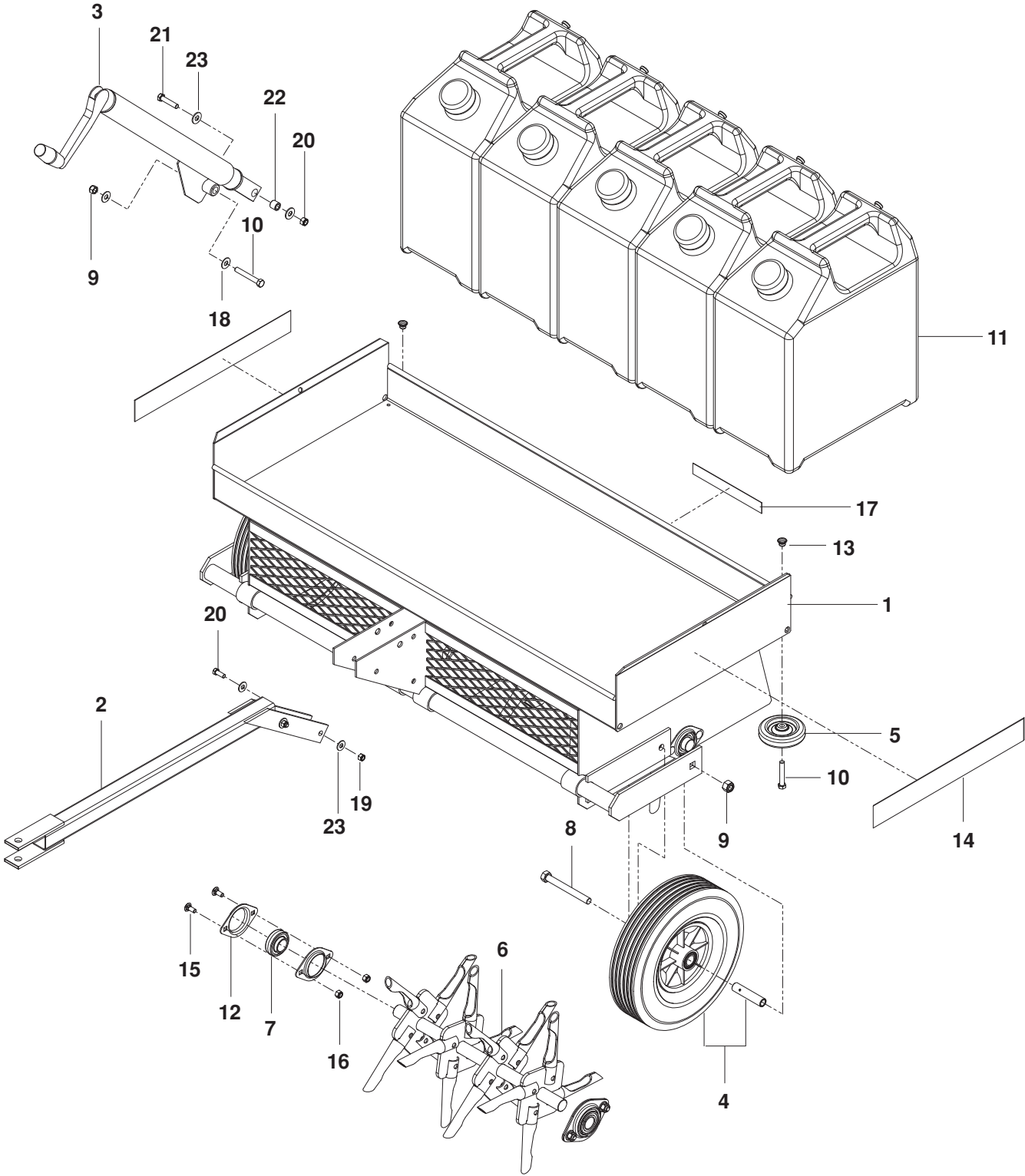
Maximum weight in pan	300 lbs.
Empty weight	190 lbs
Minimum horsepower of towing vehicle	16 HP
Tine bolt check	Every 25 hours
Tine bolt torque	15 ft/lbs
Lift jack lubrication	Every 25 hours
Wheel lubrication	Every 100 hours
Aerating pattern	4 <sup>3</sup> / <sub>8</sub> " x 7"

## TA48CE

Maximum weight in pan	375 lbs.
Empty weight	222 lbs
Minimum horsepower of towing vehicle	18 HP
Tine bolt check	Every 25 hours
Tine bolt torque	15 ft/lbs
Lift jack lubrication	Every 25 hours
Wheel lubrication	Every 100 hours
Aerating pattern	4 <sup>3</sup> / <sub>8</sub> " x 7"

# REPAIR PARTS

TA36



# REPAIR PARTS

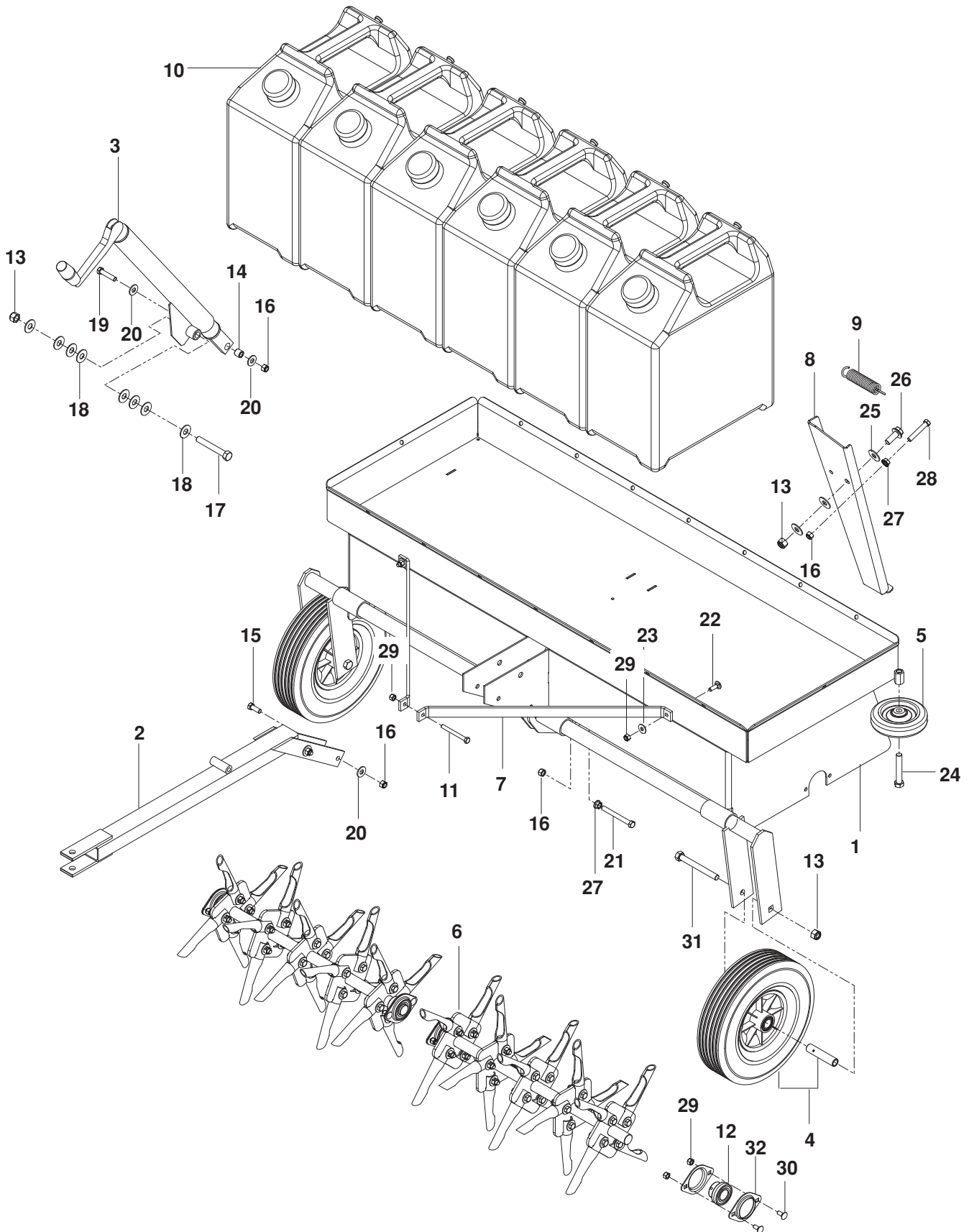
---

ITEM	PART NO.	QTY.	DESCRIPTION	ITEM	PART NO.	QTY.	DESCRIPTION
1..	540 200232.....	1	... HOUSING, ORG	14..	539 008338.....	2	... DECAL, HUSQVARNA
2..	540 200234.....	1	... TONGUE, ORG	15..	539 990316.....	8	... RHSNB $\frac{5}{16}$ -18 x $\frac{3}{4}$
3..	576 638401.....	1	... JACK	16..	539 990717.....	8	... NUT $\frac{5}{16}$ -18 HEX NYLOC
4..	539 007562.....	2	... WHEEL, 12 x 3 w/ BEARING	17..	540 200147.....	1	... DECAL, TA36 AERATOR
5..	539 007563.....	2	... TILT WHEEL	18..	539 990250.....	2	... WASHER, .531 SAE
6..	539 007575.....	2	... ROTOR w/ TINES	19..	539 990546.....	5	... NUT $\frac{3}{8}$ -16 HEX CNTRLK
	539 007571 .....	2	... TINE SET (16 TINES)	20..	539 990563.....	4	... HCS $\frac{3}{8}$ -16 x 1
7..	539 000317.....	4	... BEARING 1"	21..	539 990655.....	1	... HCS $\frac{3}{8}$ -16 x 1 $\frac{1}{2}$
8..	539 108367.....	2	... HCS $\frac{1}{2}$ -13 x 4 $\frac{1}{2}$	22..	539 010101.....	1	... BUSHING
9..	539 101331.....	3	... NUT $\frac{1}{2}$ HEX NYLOC	23..	539 990122....	10	... WASHER $\frac{3}{8}$ SAE FLAT
10..	539 101572.....	3	... HCS $\frac{1}{2}$ -13 x 3	NOT SHOWN:			
11..	539 020127.....	5	... WATER TANK (OPTIONAL)		532 429196 .....	2	... DECAL, CROWN
12..	539 000318.....	8	... BEARING FLANGE		539 108429 .....	2	... DECAL, INSTRUCTIONS
13..	539 005011.....	2	... CAP PLUG				

NOTE: ALL FASTENERS ARE GRADE 5 UNLESS OTHERWISE SPECIFIED.

# REPAIR PARTS

TA48



# REPAIR PARTS

---

ITEM	PART NO.	QTY.	DESCRIPTION	ITEM	PART NO.	QTY.	DESCRIPTION
1..	539 108725.....	1	FRAME, ORG	20..	539 990517.....	6	WASHER $\frac{3}{8}$
2..	539 108428.....	1	TONGUE BLK	21..	539 102754.....	1	HCS $\frac{3}{8}$ -16 x 3 $\frac{1}{2}$ GR8
3..	576 638401.....	1	JACK	22..	539 990208.....	2	RHSNB $\frac{5}{16}$ -18 x 1
4..	539 007562.....	2	WHEEL, 12 x 3 w/ BEARING	23..	539 990692.....	2	WASHER $\frac{5}{16}$
5..	539 007563.....	2	TILT WHEEL	24..	539 101572.....	2	HCS $\frac{1}{2}$ -13 x 3
6..	539 108416.....	2	ROTOR w/ TINES	25..	539 104864.....	3	WASHER $\frac{7}{16}$
	539 109294 .....	2	TINE SET (20 TINES)	26..	539 990622.....	1	BOLT $\frac{1}{2}$ -13 x 1 $\frac{1}{4}$ FLG HD
7..	539 109175.....	2	TIE BAR	27..	539 990613.....	2	NUT $\frac{3}{8}$ -16, WHIZLOCK
8..	539 108727.....	1	KICKSTAND	28..	539 990629.....	1	HCS $\frac{3}{8}$ -16 x 2 $\frac{1}{4}$
9..	539 106850.....	1	SPRING	29..	539 990717.....	11	NUT $\frac{5}{16}$ -18 NYLOC
10..	539 020127.....	6	WATER TANK (OPTIONAL)	30..	539 990316.....	4	RHSNB $\frac{5}{16}$ -18 x $\frac{3}{4}$
11..	539 990553.....	1	HCS $\frac{5}{16}$ -18 x 3	31..	539 108367.....	1	HCS $\frac{1}{2}$ -13 x 4 $\frac{1}{2}$
12..	539 000317.....	4	BEARING 1" w/ LCK COLLAR	32..	539 000318.....	8	BEARING FLANGE
13..	539 101331.....	4	NUT $\frac{1}{2}$ -13 NYLOC	NOT SHOWN			
14..	539 010101.....	1	BUSHING	539 111113 .....	1	DECAL, TA48 AERATOR	
15..	539 990563.....	4	HCS $\frac{3}{8}$ -16 x 1	539 108429 .....	2	DECAL, INSTRUCTIONS	
16..	539 976979.....	7	NUT, $\frac{3}{8}$ -16 NYLOC	532 429196 .....	1	DECAL, HUSQVARNA	
17..	539 108370.....	1	HCS $\frac{1}{2}$ -13 x 3 $\frac{1}{2}$	539 11446 .....	1	DECAL, CE 968999236	
18..	539 990550.....	8	WASHER $\frac{1}{2}$	539 107311 .....	1	DECAL, CE	
19..	539 990730.....	1	HCS $\frac{3}{8}$ -16 x 1 $\frac{3}{4}$				

NOTE: ALL FASTENERS ARE GRADE 5 UNLESS OTHERWISE SPECIFIED.

