

# 917.240462 (YTH20K46)

---

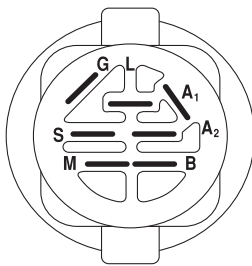
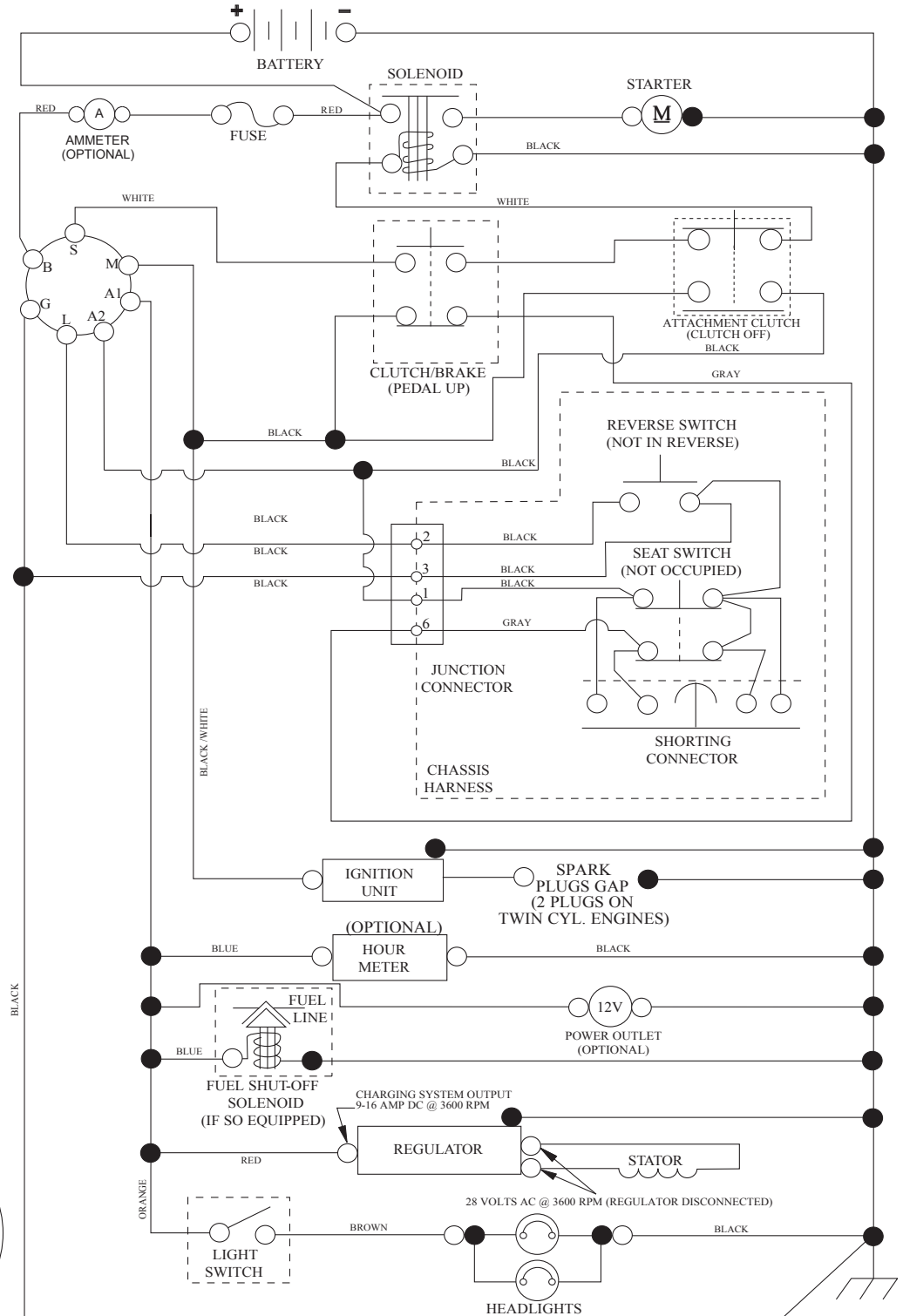
## Parts's Manual

Gasoline containing up to 10% ethanol (E10) is acceptable for use in this machine.  
The use of any gasoline exceeding 10% ethanol (E10) will void the product warranty.

# TRACTOR - - MODEL NUMBER 917.240462, PRODUCT NO. YTH20K46

## SCHEMATIC

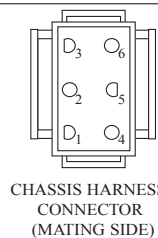
SCH10



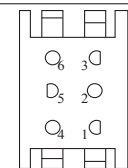
IGNITION SWITCH

POSITION	CIRCUIT	"MAKE"
OFF	M+G+A1	
RUN/OVERRIDE	B+A1	
RUN	B+A1	L+A2
START	B + S + A1	

03107



CHASSIS HARNESS CONNECTOR (MATING SIDE)



DASH HARNESS CONNECTOR (MATING SIDE)

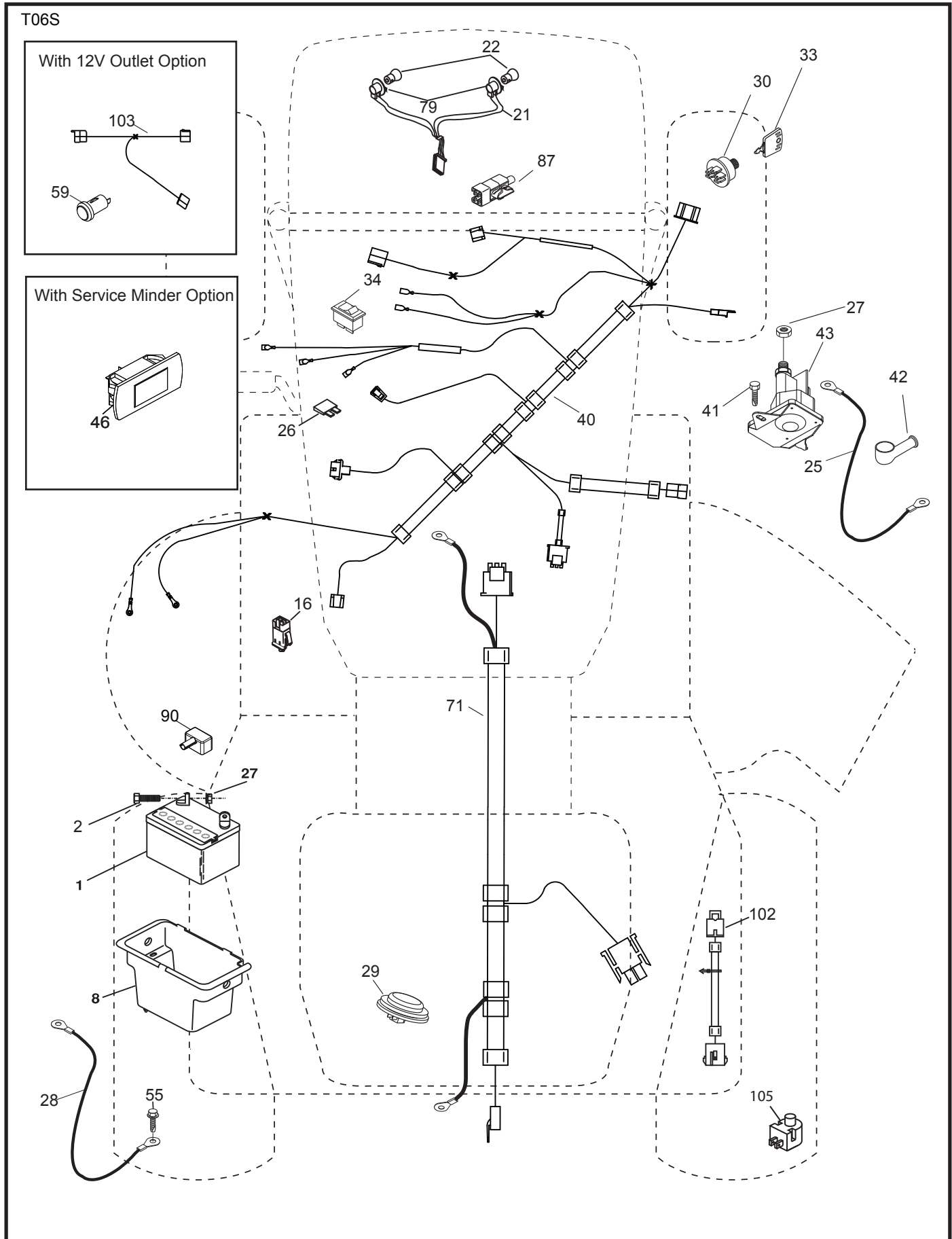
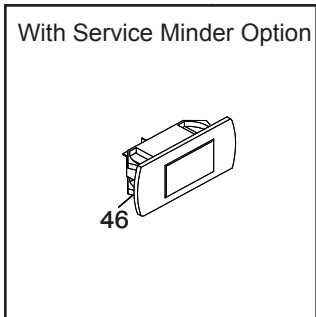
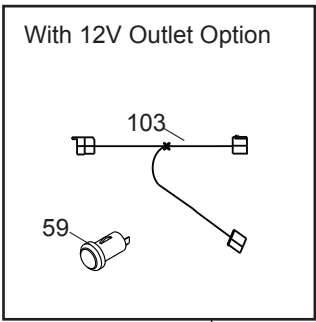
WIRING INSULATED CLIPS  
NOTE: IF WIRING INSULATED CLIPS WERE REMOVED FOR SERVICING OF UNIT, THEY SHOULD BE RE-INSTALLED TO PROPERLY SECURE YOUR WIRING.

●  
NON-REMOVABLE CONNECTIONS

○  
REMOVABLE CONNECTIONS

**TRACTOR -- MODEL NUMBER 917.240462, PRODUCT NO. YTH20K46**  
**ELECTRICAL**

T06S

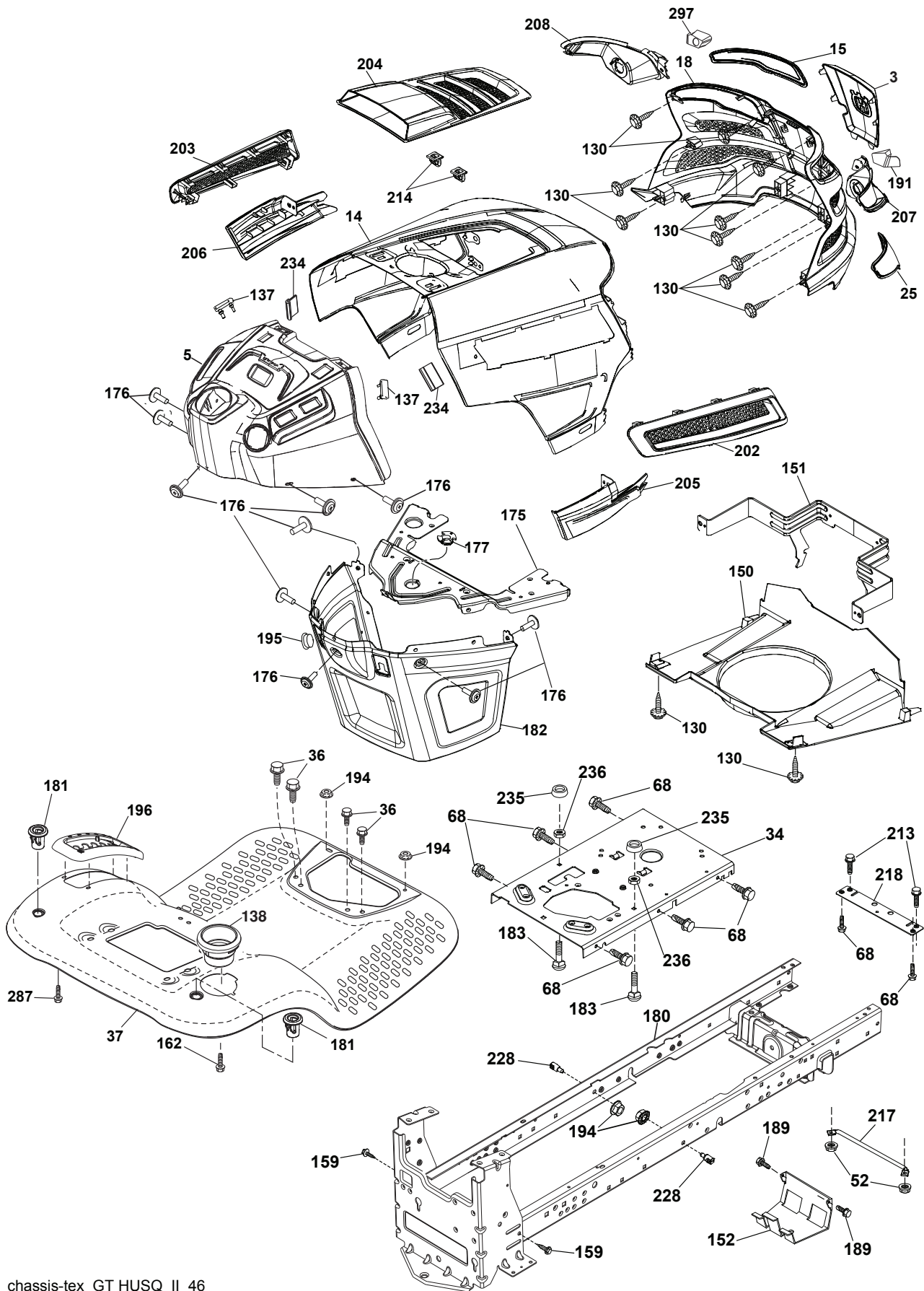


**TRACTOR - - MODEL NUMBER 917.240462, PRODUCT NO. YTH20K46  
ELECTRICAL**

<b>KEY NO.</b>	<b>PART NO.</b>	<b>DESCRIPTION</b>
1	532 16 34-65	Battery
2	874 76 04-12	Bolt Hex Head 1/4-20 x 3/4
8	532 19 32-28	Box Battery
16	532 17 61-38	Switch Interlock Push-In
21	532 40 02-52	Harness Socket Light w/4152J
22	532 00 41-52	Bulb Light
25	532 41 28-95	Cable Starter
26	532 17 51-58	Fuse
27	873 51 04-00	Nut Keps Hex 1/4-20 unc
28	532 19 88-85	Cable, Ground
29	532 40 15-45	Switch, Seat
30	532 19 33-50	Switch, Ign
33	532 41 19-33	Key / Chain
34	532 11 07-12	Switch Light / Reset
40	532 40 10-98	Harness Ign. Dash
41	817 72 04-08	Screw Thd Cut 1/4-20 x 1/2
42	532 13 15-63	Cover, Terminal
43	532 19 25-07	Solenoid
46	532 40 17-63	Gauge Hourmeter
55	817 06 05-12	Screw Thdrol 5/16-18 x 3/4 TYTT
71	532 44 15-44	Harness Chassis
79	532 17 52-42	Socket Asm. Bulb Twistlock
87	532 19 78-02	Switch Interlock Clutch Cable
90	532 43 53-95	Cover Terminal
102	532 40 44-54	Harness Pigtail
105	532 40 75-68	Switch Reverse TT GT

**NOTE:** All component dimensions given in U.S. inches  
1 inch = 25.4 mm

**TRACTOR - - MODEL NUMBER 917.240462, PRODUCT NO. YTH20K46**  
**CHASSIS**



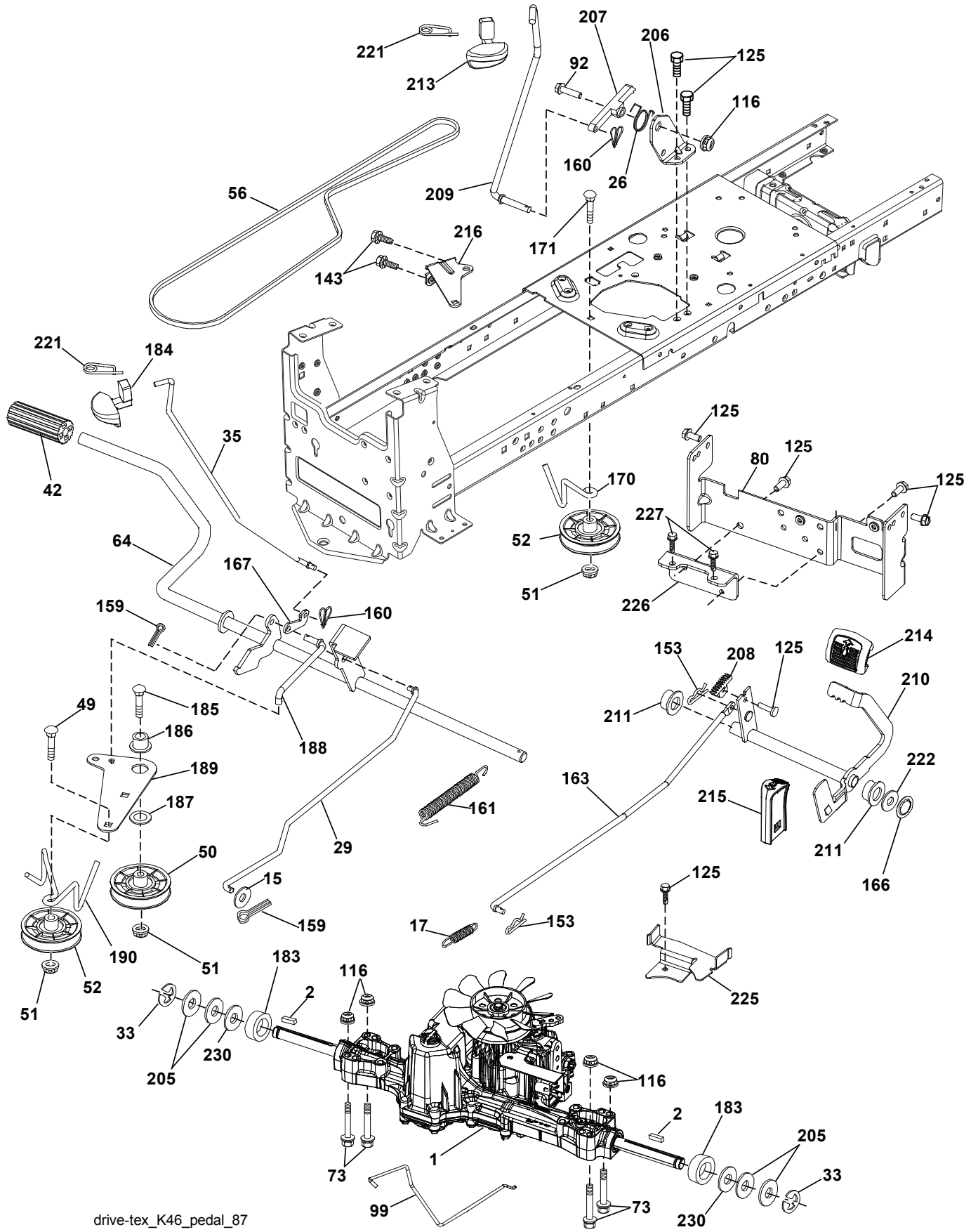
chassis-tex\_GT HUSQ\_II\_46

**TRACTOR - - MODEL NUMBER 917.240462, PRODUCT NO. YTH20K46  
CHASSIS**

<b>KEY NO.</b>	<b>PART NO.</b>	<b>DESCRIPTION</b>
3	532 43 97-52	Logo Crown
5	532 43 74-73	Dash
14	532 44 11-77	Hood
15	532 43 97-33	Lens LH
18	532 43 77-62	Grille/Lens Asm.
25	532 44 33-85	Lens RH
34	532 19 61-25	Plate Engine
36	817 06 05-12	Screw 5/16-18 x 3/4
37	532 44 12-06	Fender
52	873 68 05-00	Nut Lock 5/16-18
68	817 49 05-08	Screw Thdrol 5/16-18 x 1/2
130	532 41 63-58	Screw #10 x 0.750 BOS Thread
137	532 40 75-90	Bumper Dash
138	532 43 97-47	Cupholder
150	532 43 97-31	Air Duct
151	532 43 66-70	Bracket Pivot Hood
152	532 19 95-35	Shield Browning
159	817 00 06-12	Screw Hexwsh Thdr 3/8-16 x 3/4
162	532 14 24-32	Screw
175	532 19 63-04	Crossmember
176	532 40 07-76	Screw 10-24 x 5/8
177	532 19 52-27	Bushing Steering
180	532 19 54-57	Chassis
181	532 40 47-96	Bushing Mtg. Fender Crgo
182	532 40 68-59	Dash Lower
183	874 52 05-20	Bolt 5/16-18 x 1-1/4 Full Thread
189	817 00 05-12	Screw 5/16-18 x 3/4
191	532 43 74-55	Insert Reflective RH
194	873 90 05-00	Nut Lock Hex Flange 5/16-18
195	532 40 41-37	Plug Hole Dash Lower
196	532 43 96-47	Console Asm. Deck Lift
202	532 43 97-28	Vent Side Hood RH
203	532 43 97-27	Vent Side Hood LH
204	532 43 57-14	Vent Top Hood
205	532 43 97-30	Skirt Hood Side RH
206	532 43 97-29	Skirt Hood Side LH
207	532 43 97-34	Bezel RH
208	532 43 97-35	Bezel LH
213	874 76 05-12	Bolt 5/16-18 x 3/4
214	532 19 91-45	Clip Retainer Tinner
217	532 40 91-67	Rod Pivot
218	532 19 63-95	X-Piece Hood Stop
228	532 19 51-61	Stud Fastner
234	532 40 47-42	Bumper Hood
235	532 40 61-29	Spacer Fender
236	873 93 05-00	Nut Lock 5/16-18 unc
287	817 60 04-06	Screw Hex Washhead 1/4-20 x 3/8
297	532 43 74-56	Insert Reflective LH
--	532 43 18-83	Kit Bumper

**NOTE:** All component dimensions given in U.S. inches  
1 inch = 25.4 mm

# TRACTOR -- MODEL NUMBER 917.240462, PRODUCT NO. YTH20K46 DRIVE



drive-tex\_K46\_pedal\_87



# TRACTOR - - MODEL NUMBER 917.240462, PRODUCT NO. YTH20K46

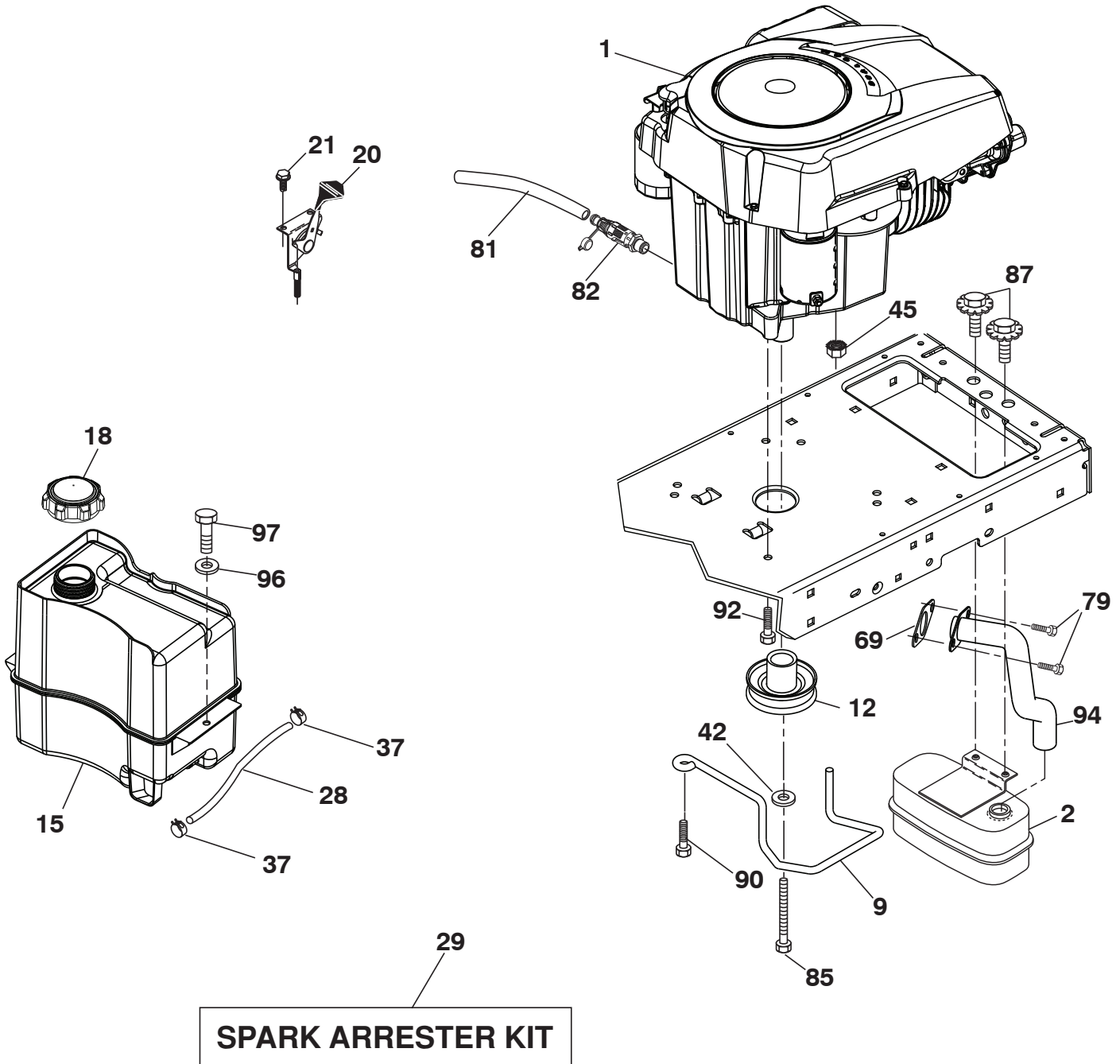
## DRIVE

KEY NO.	PART NO.	DESCRIPTION	KEY NO.	PART NO.	DESCRIPTION
1	---	Transaxle, TUFFTORQ K46 BT (426120)(See Transaxle breakdown)	170	532 19 43-22	Keeper Belt Centerspan
2	532 12 35-83	Key	171	872 11 06-16	Bolt Rd Hd 3/8-16 x 2
15	819 13 13-16	Washer 13/32 x 13/16 x 16 Ga.	183	532 13 70-57	Spacer Axle
17	532 41 36-78	Spring, Brake	184	532 44 14-55	Handle Parking Brake
26	532 19 96-79	Spring Return Cruise	185	872 11 06-22	Bolt Rdhd 3/8-16 unc x 2-3/4 Gr. 5
29	532 40 38-06	Rod, Brake	186	532 19 43-21	Spacer Retainer
33	812 00 00-01	Ring E	187	819 13 32-10	Washer
35	532 43 54-86	Rod, Brake, Park	188	532 19 43-23	Link Clutch Ground Drive
42	532 12 48-72	Cover, Foot Pedal	189	532 19 43-17	Bellcrank Ground Drive
49	872 11 06-14	Bolt	190	532 19 43-18	Keeper Bellcrank Ground Drive
50	532 19 43-27	Pulley Idler Flat	205	532 12 17-48	Washer
51	873 90 06-00	Lock Nut 3/8-16	206	532 19 78-67	Bracket Mount Latch Cruise
52	532 19 43-26	Idler V-Groove 910" Offset	207	532 19 78-68	Latch Control Cruise
56	532 13 09-69	V-Belt, Drive	208	532 19 78-69	Gear Sector Control Cruise
64	532 19 78-65	Shaft Asm. Pedal Brake Control	209	532 19 95-92	Rod Control Cruise
73	874 49 05-44	Bolt Hex Flghd 5/16-18 x Gr. 5	210	532 40 09-80	Rocker Asm. Pedal Control
80	532 44 06-19	Bracket Strap Torque	211	532 12 01-83	Bearing Nylon
92	874 76 05-20	Bolt Fin Hex 5/16-18 unc x 1.25	213	532 40 31-19	Knob Control Cruise
99	532 41 57-42	Rod Spring Bypass	214	532 42 12-63	Pedal Forward
116	873 90 05-00	Nut Lock Hex Flange 5/16-18	215	532 40 17-23	Pedal Reverse
125	817 00 05-12	Screw 5/16-18 x 3/4	216	532 19 61-31	Bracket Pulley Idler
143	817 49 05-08	Screw 5/16-18 x 1/2	221	532 40 31-87	Retainer Spring Clip Handle
153	532 12 47-88	Retainer Spring	222	879 21 20-10	Washer 21/32 x 1-1/4 10 Ga.
159	876 02 04-12	Pin Cotter 1/8 x 3/4	225	532 40 33-19	Keeper Belt Trans.
160	532 16 94-84	Retainer Clip	226	532 40 15-64	Bracket Mount Torque
161	532 10 57-09	Spring, Return, Clutch	227	817 49 05-12	Screw Thdrol 5/16-18 x 3/4
163	532 40 10-34	Rod Pedal Control	230	532 18 89-67	Washer Hardened
166	532 42 91-64	Nut Push			
167	532 40 52-57	Latch Brake Parking			

**NOTE:** All component dimensions given in U.S. inches  
1 inch = 25.4 mm



TRACTOR - - MODEL NUMBER 917.240462, PRODUCT NO. YTH20K46  
ENGINE



**SPARK ARRESTER KIT**

engine-tex\_Kohl\_29\_r2

**TRACTOR - - MODEL NUMBER 917.240462, PRODUCT NO. YTH20K46  
ENGINE**

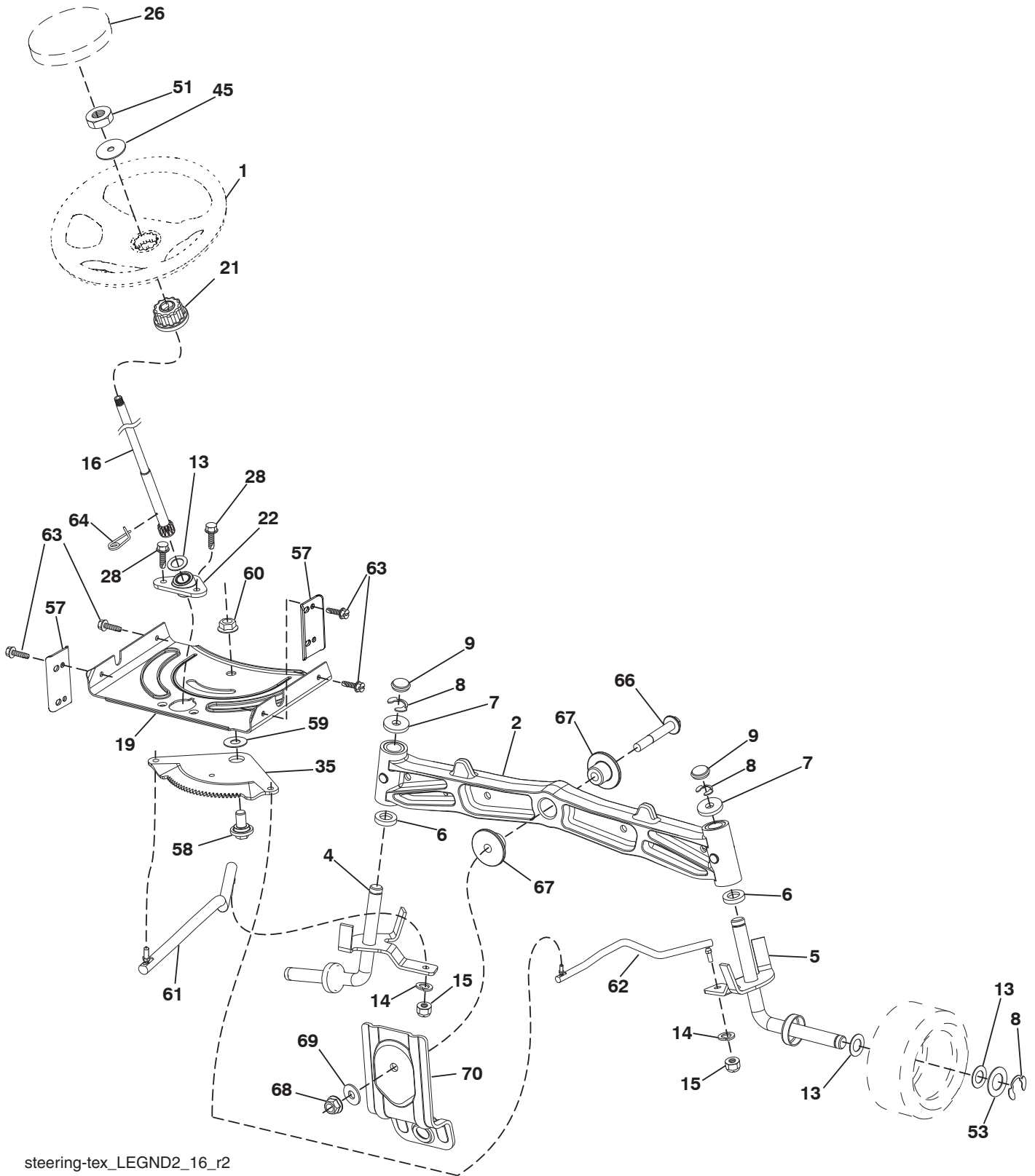
<b>KEY NO.</b>	<b>PART NO.</b>	<b>DESCRIPTION</b>
1	-----	Engine Kohler Model No. SV600-0212 (422749) (See Engine breakdown)
2	532 18 86-55	Muffler
9	532 19 43-20	Keeper Belt Engine
12	532 40 54-72	Pulley Engine
15	532 40 74-89	Tank Fuel
18	532 43 85-96	Cap Asm
20	532 40 15-08	Control Throttle/Choke
21	532 41 63-58	Screw #10 x 0.750 BOS Thread
28	532 40 11-37	Fuel Line
29	532 13 71-80	Spark Arrester Kit
37	532 12 34-87	Clamp Hose
42	810 04 07-00	Washer Lock 7/16
45	873 51 04-00	Nut Keps Hex 1/4-20 unc
69	532 18 59-09	Gasket
79	532 19 23-34	Screw Socket Head
81	532 14 84-56	Tube Drain Oil Easy
82	532 42 82-87	Valve Drain Oil
85	532 17 39-37	Bolt Hex 7/16-20 x 4 x Gr. 5-1.5 Thr
87	532 17 18-77	Bolt 5/16-18 unc x 3/4 w/Sems
90	817 00 06-16	Screw 3/8-16 x 1
92	817 12 06-16	Screw 3/8-16 x 1
94	532 18 86-54	Tube Exhaust
96	819 09 14-16	Washer 9/32 x 7/8 x 16 Ga.
97	817 67 04-12	Screw Hexwsh Thdrol 1/4-20 x 3/4

**NOTE:** All component dimensions given in U.S. inches  
1 inch = 25.4 mm

For engine service and replacement parts, call the toll free number for your engine manufacturer listed below:

Kohler Co. 1-800-544-2444

**TRACTOR - - MODEL NUMBER 917.240462, PRODUCT NO. YTH20K46**  
**STEERING ASSEMBLY**



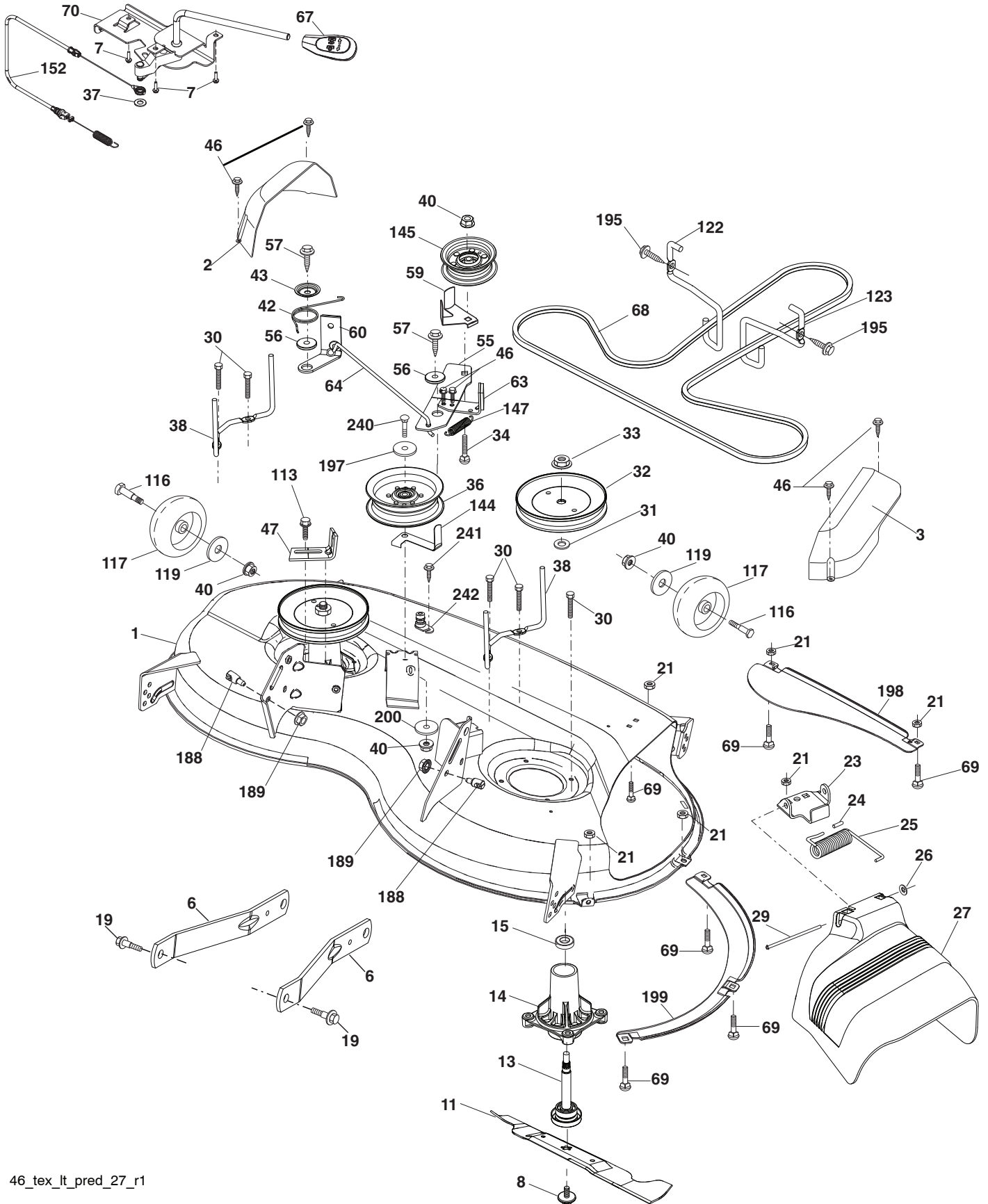
steering-tex\_LEGND2\_16\_r2

**TRACTOR - - MODEL NUMBER 917.240462, PRODUCT NO. YTH20K46  
STEERING ASSEMBLY**

<b>KEY NO.</b>	<b>PART NO.</b>	<b>DESCRIPTION</b>
1	532 43 97-40	Wheel, Steering
2	532 19 59-68	Axle Asm., Front
4	532 40 30-87	Spindle Asm., LH
5	532 40 30-88	Spindle Asm., RH
6	532 12 49-31	Bearing, Race Thrust Harden
7	532 12 17-48	Washer 25/32 x 1-5/8 x 16 Ga.
8	812 00 00-29	Ring, Klip #T5304-75
9	532 12 12-32	Cap, Spindle
13	532 12 17-49	Washer 25/32 x 1-1/4 x 16 Ga.
14	810 04 06-00	Washer, Lock Hvy Hlcl Spr 3/8
15	873 54 06-00	Nut, Crown Lock 3/8-24 unf
16	532 40 82-19	Shaft Steering
19	532 19 47-29	Plate Steering
21	532 18 67-37	Adapter, Wheel Steering
22	532 42 05-37	Support Strg. Lower
26	532 43 97-43	Insert, Wheel Steering
28	817 00 06-12	Screw 3/8-16 x 3/4
35	532 19 47-32	Gear, Sector Plate
45	819 18 38-12	Washer 9/16 ID x 2-3/8 OD 12 Ga.
51	873 94 08-00	Nut Hex Jam Toplock 1/2-20 unf
53	532 18 89-67	WasherHardened.793x1.637x.060
57	532 40 74-65	Bracket Upstop
58	532 19 47-47	Bolt Shoulder Sector Pivot CFM
59	532 19 47-48	Washer Thrust Sector Steering
60	873 97 10-00	Nut Flange Lock 5/8-11
61	532 19 47-40	Draglink LH
62	532 19 47-41	Draglink, RH
63	817 00 05-12	Screw 5/16-18 x 3/4
64	532 19 98-49	Retainer Clip Spring Steering
66	871 02 07-48	Bolt Hex Fghd 7/16-14 x 3 Serr
67	532 19 47-37	Bushing PM Front Axle
68	873 90 07-00	Nut Lock Flange 7/16-14 Gr. 5
69	532 19 91-62	Washer 1.5 x .505 x .118
70	532 19 61-97	Bracket Deck Susp. Front

**NOTE:** All component dimensions given in U.S. inches  
1 inch = 25.4 mm

TRACTOR -- MODEL NUMBER 917.240462, PRODUCT NO. YTH20K46  
MOWER DECK



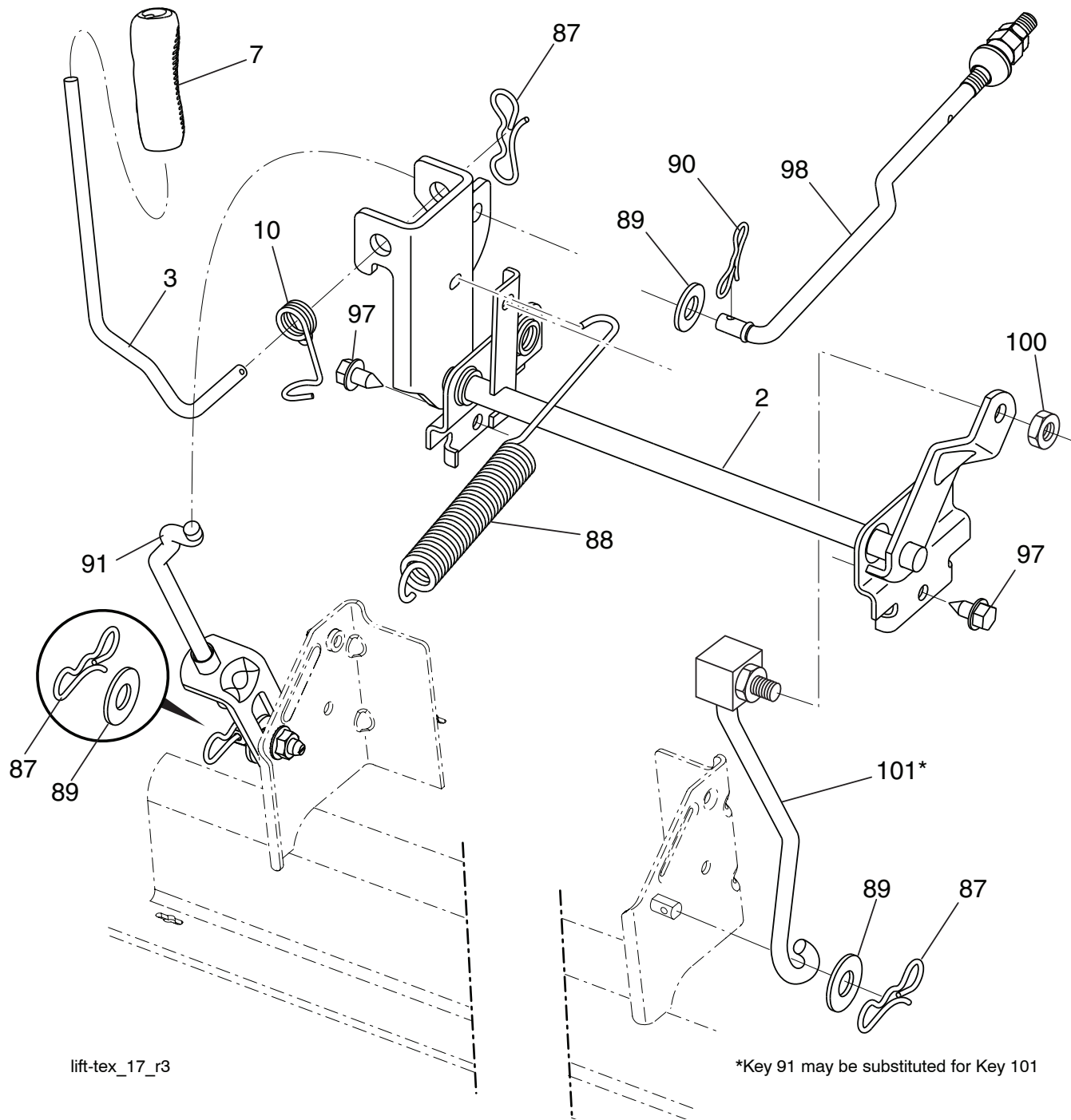
46\_tex\_lt\_pred\_27\_r1

**TRACTOR - - MODEL NUMBER 917.240462, PRODUCT NO. YTH20K46  
MOWER DECK**

<b>KEY PART NO. NO.</b>	<b>DESCRIPTION</b>	<b>KEY PART NO. NO.</b>	<b>DESCRIPTION</b>
1 532 44 23-82	Mower Housing	60 532 19 94-71	Arm Brake Mower LH
2 532 40 55-07	Cover Mandrel LH	63 532 19 94-77	Arm Brake Mower
3 532 40 55-06	Cover Mandrel RH	64 532 40 51-38	Linkage Brake
6 532 19 51-86	Arm Suspension	67 532 40 30-12	Handle, Clutch Cable
7 532 41 63-58	Screw #10 x 0.750 BOS Thread	68 532 40 51-43	V-Belt
8 532 19 30-03	Bolt/Washer asm 7/16-20 unf	69 872 14 05-05	Bolt
11 532 40 53-80	Blade Mower	70 532 19 99-72	Clutch Asm.
- - 532 40 31-07	Blade, 46" Mulching	113 817 00 05-10	Screw 5/16-18
13 532 19 28-72	Shaft Assembly, Mandrel	116 532 19 34-06	Bolt, Shoulder
14 532 18 72-81	Housing, Mandrel	117 532 17 48-73	Wheel, Gauge
15 532 11 04-85	Bearing, Ball, Mandrel	119 819 13 20-12	Washer 13/32 x 1-1/4 x 12 Ga.
19 532 19 65-39	Bolt, Shoulder	122 532 19 72-58	Keeper Belt Eng. LH
21 873 68 05-00	Nut	123 532 19 72-59	Keeper Belt Eng. RH
23 532 19 25-57	Bracket, Deflector	144 532 19 92-04	Keeper Belt
24 532 10 53-04	Cap, Sleeve	145 532 19 31-97	Pulley Idler
25 532 19 70-26	Spring, Torsion, Deflector	147 532 40 18-72	Spring Return
26 532 11 04-52	Nut, Push	152 532 43 51-10	Cable Clutch Cbl. w/Spr.
27 532 40 53-57	Shield, Deflector	188 532 19 51-61	Stud Fastener
29 532 13 14-91	Rod, Hinge	189 873 90 05-00	Nut Lock Hex Flange
30 532 17 39-84	Screw Thdrol Rolling Wsh Hd	195 817 00 06-12	Screw 3/8-16 x 3/4
31 532 18 76-90	Washer, Spacer	197 819 13 13-12	Washer 13/32 x 13/16 x 12 Ga.
32 532 19 74-73	Pulley, Mandrel	198 532 40 31-49	Baffle Center Front
33 532 40 02-34	Nut, Toplock, Flanged	199 532 40 31-50	Baffle Front RH
34 872 11 06-12	Bolt Carr Sh. 3/8-16 x 1-1/2 Gr. 5	200 532 41 35-24	Washer 13/32 x 1 x 1/2 Ga.
36 532 19 73-79	Pulley, Idler, 4.50 RAW	240 874 52 06-36	Bolt 3/8-16 unc x 2-1/4 Gr. 5
37 819 13 13-16	Washer 13/32 x 13/16 x 16 Ga.	241 532 15 29-27	Screw TT #10-32.5 3/8 Flg.
38 532 43 25-20	Keeper Belt Mandrel	242 532 41 55-98	Port Washout
40 873 90 06-00	Nut, Lock Flg. 3/8-16 unc	- - 532 41 64-05	Coupling Quick Connect
42 532 19 84-10	Spring Trosion Brake	- - 532 19 28-70	Mandrel Assembly (Includes hous- ing, shaft assembly, and bearing only - pulley/nut/washer and blade bolt/washers not included)
43 532 19 72-56	Spring Torsion Retainer		Replacement Mower, Complete
46 532 13 77-29	Screw		
47 532 19 72-50	Bracket Clutch Cable		
55 532 19 72-49	Arm, Idler	- - 532 43 18-23	
56 532 19 90-92	Spacer, Retainer		
57 817 00 06-16	Screw Hexwsh Thd 3/8-16 x 1		
59 532 14 10-43	Guard, Tuv Idler (94)		

**NOTE:** All component dimensions given in U.S. inches  
1 inch = 25.4 mm

**TRACTOR -- MODEL NUMBER 917.240462, PRODUCT NO. YTH20K46  
MOWER LIFT**



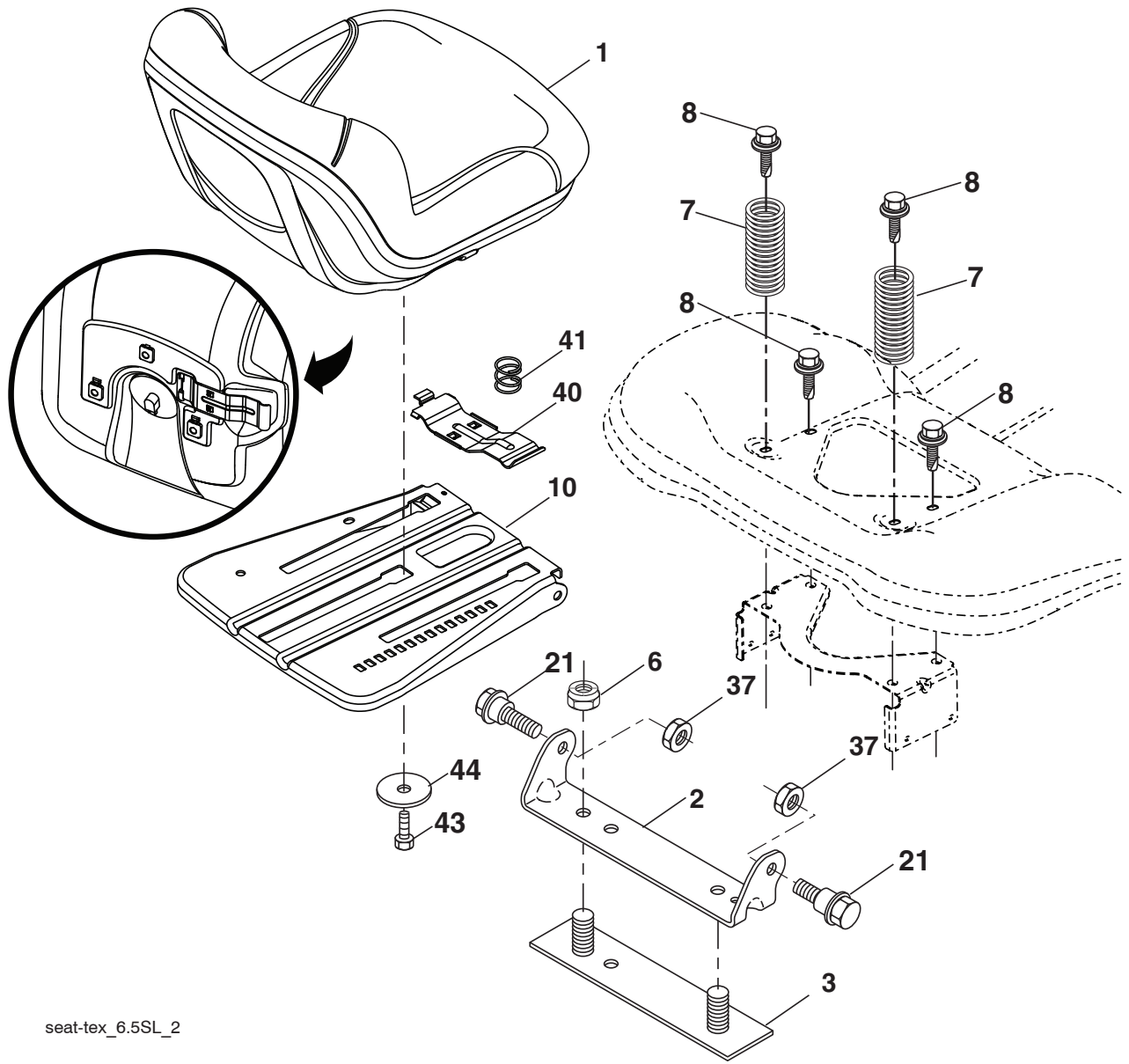
KEY NO.	PART NO.	DESCRIPTION
2	532 42 20-27	Shaft Asm., Lift
3	532 19 52-31	Lever Asm., Lift RH
7	532 41 15-55	Grip, Lever
10	532 19 63-14	Spring Torsion
87	532 19 42-09	Pin Cotter 7/16 Bow Tie Lock
88	532 41 07-10	Spring Lift Assist
89	819 19 19-12	Washer Clear Zinc
90	532 19 42-08	Pin Cotter 5/16 Bow Tie Lock

KEY NO.	PART NO.	DESCRIPTION
91	532 19 51-81	Link Lift Susp Mower Rear
97	817 00 06-12	Screw 3/8-16 x .75
98	532 19 52-70	Link Lift Susp. Front Mower
100	873 93 06-00	Nut Center Lock 3/8-16 unc
101	532 40 70-03	Link Asm. Lift FXD

**NOTE:** All component dimensions given in U.S. inches  
1 inch = 25.4 mm



# TRACTOR - - MODEL NUMBER 917.240462, PRODUCT NO. YTH20K46 SEAT ASSEMBLY



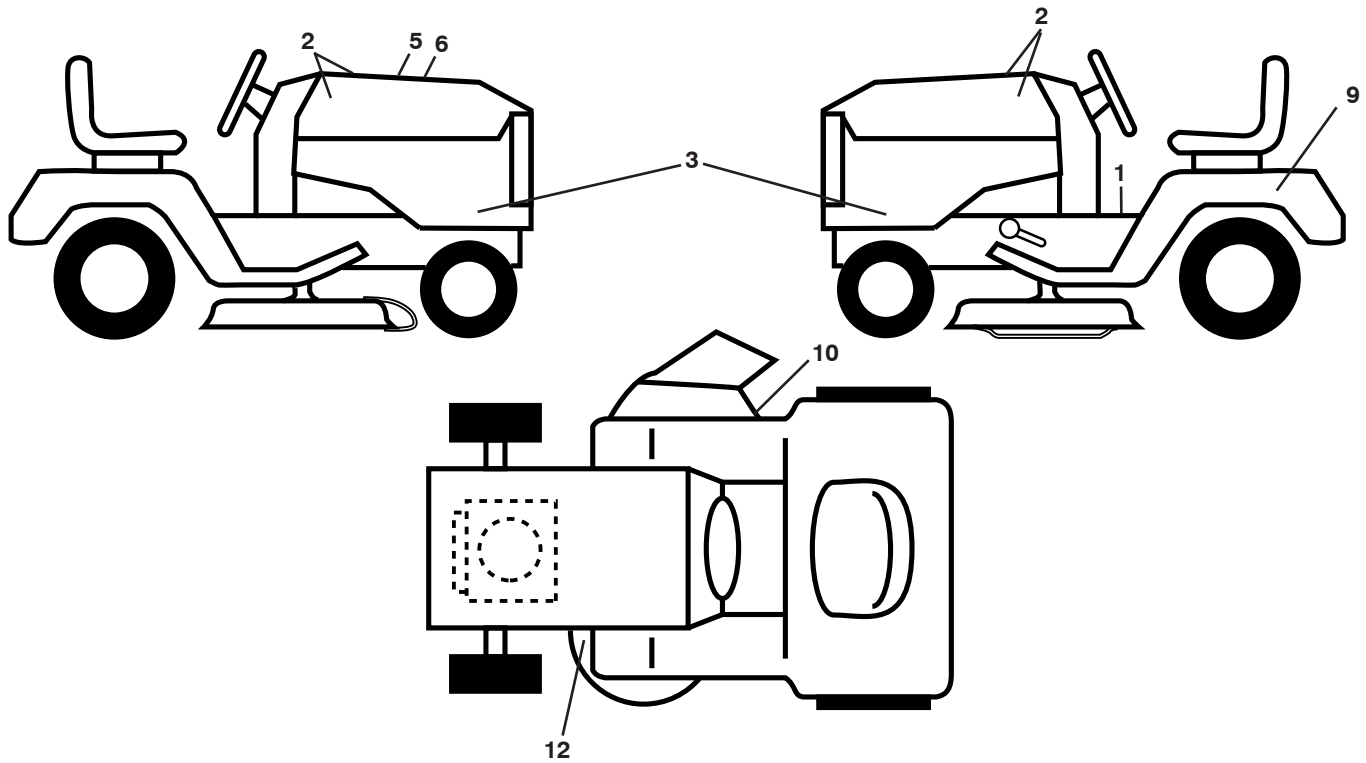
seat-tex\_6.5SL\_2

KEY NO.	PART NO.	DESCRIPTION
1	532 43 98-22	Seat
2	532 18 01-66	Bracket Pivot Fender
3	532 14 06-75	Strap, Asm Fender
6	873 80 06-00	Nut, Lock w/Ins. 3/8-16 unc
7	532 12 41-81	Spring, Seat Cprsn
8	532 17 18-77	Bolt 5/16-18 unc x 3/4 w/Sems
10	532 19 69-77	Pan, Seat
21	532 17 18-52	Bolt, Shoulder 5/16-18

KEY NO.	PART NO.	DESCRIPTION
37	873 80 05-00	Nut, Lock 5/16-18 unc
40	532 19 76-61	Handle Slide Seat
41	532 19 82-00	Spring Latch Seat
43	874 76 06-12	Bolt Fin Hex 3/8-16 unc x 3/4
44	819 13 38-12	Washer 13/32 x 2-3/8 x 12 Ga.

**NOTE:** All component dimensions given in U.S. inches  
1 inch = 25.4 mm

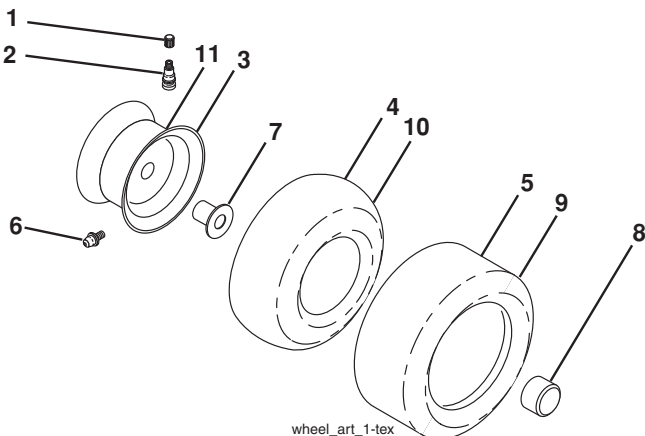
**TRACTOR - - MODEL NUMBER 917.240462, PRODUCT NO. YTH20K46  
DECALS**



KEY PART NO.	PART NO.	DESCRIPTION
1	532 41 16-57	Decal, Operators
2	532 42 91-96	Decal, Badge
5	532 42 38-29	Decal, Customer Respons.
6	532 44 14-53	Decal, Replacement
9	532 14 50-05	Decal, Battery Dnge/Poi
10	532 17 05-63	Decal, Warning

KEY PART NO.	PART NO.	DESCRIPTION
12	532 16 03-96	Decal, Mower V-Belt Schematic
--	532 16 69-60	Decal, Bypass
--	532 43 96-81	Pad, Footrest, LH
--	532 43 96-82	Pad, Footrest, RH
--	532 44 41-49	Manual, Owner's (English)
--	532 44 41-50	Manual, Owner's (Spanish)

**WHEELS AND TIRES**



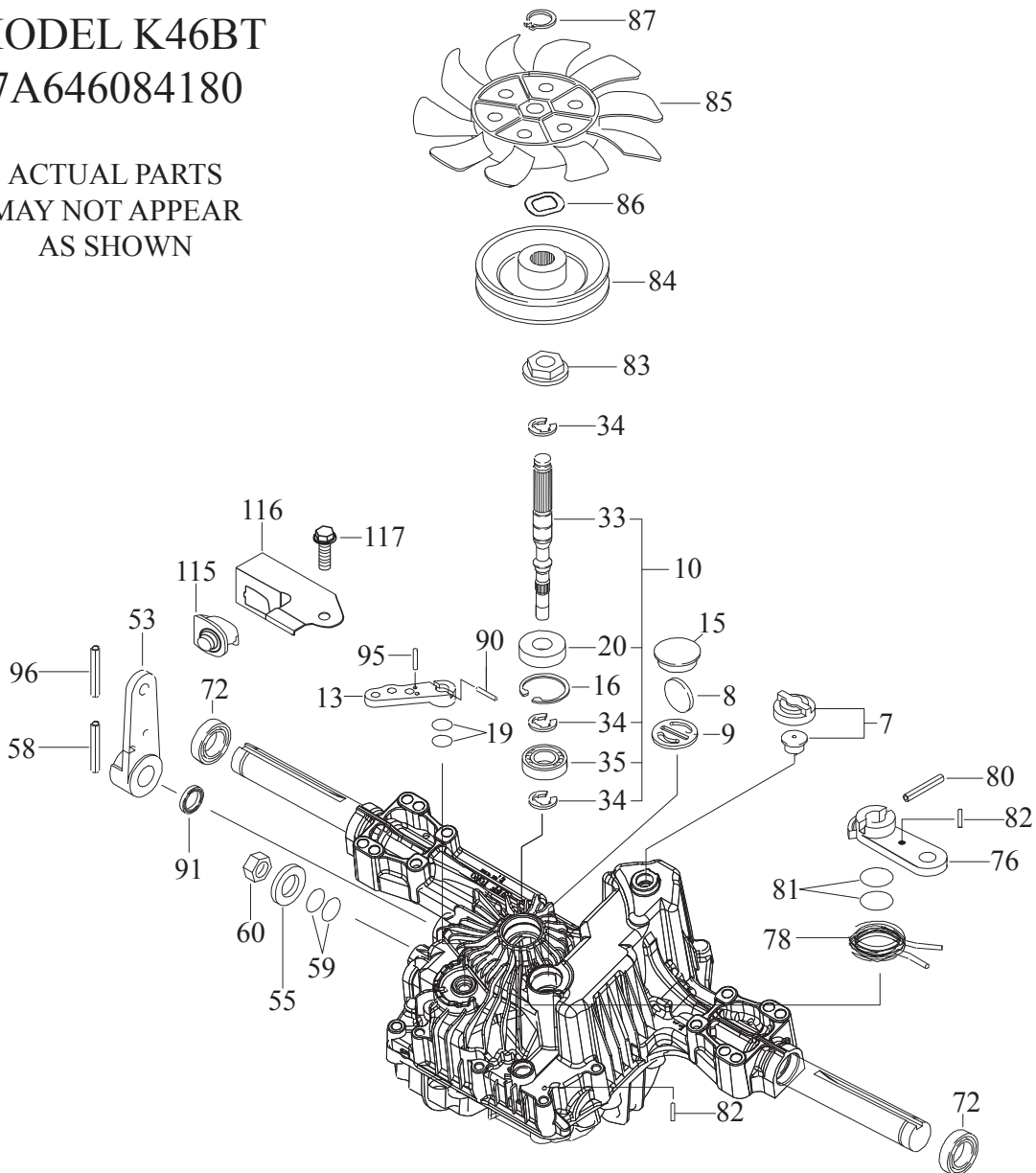
KEY PART NO.	PART NO.	DESCRIPTION
1	532 05 91-92	Cap Valve Tire
2	532 06 51-39	Stem Valve
3	532 13 83-36	Rim Front Service
4	532 05 99-04	Tube Front (Service Item Only)
5	532 10 62-22	Tire Front 15 x 6.0-6 Service
6	532 12 49-57	Fitting Grease (Front Wheel Only)
7	532 12 49-59	Bearing Flange (Front Wheel Only)
8	532 17 50-39	Cap Axle Blk 1 50 x 1 00
9	532 13 84-68	Tire R Ts 20 x 8-8
10	532 12 49-26	Tube Rear (Service Item Only)
11	532 13 83-37	Rim Asm 8" rear Service
--	532 14 43-34	Sealant, Tire (10 oz. Tube)

**NOTE:** All component dimensions given in U.S. inches  
1 inch = 25.4 mm

**TRACTOR - - MODEL NUMBER 917.240462, PRODUCT NO. YTH20K46  
TUFFTORQ TRANSAXLE MODEL NUMBER K46BT**

**MODEL K46BT  
7A646084180**

ACTUAL PARTS  
MAY NOT APPEAR  
AS SHOWN



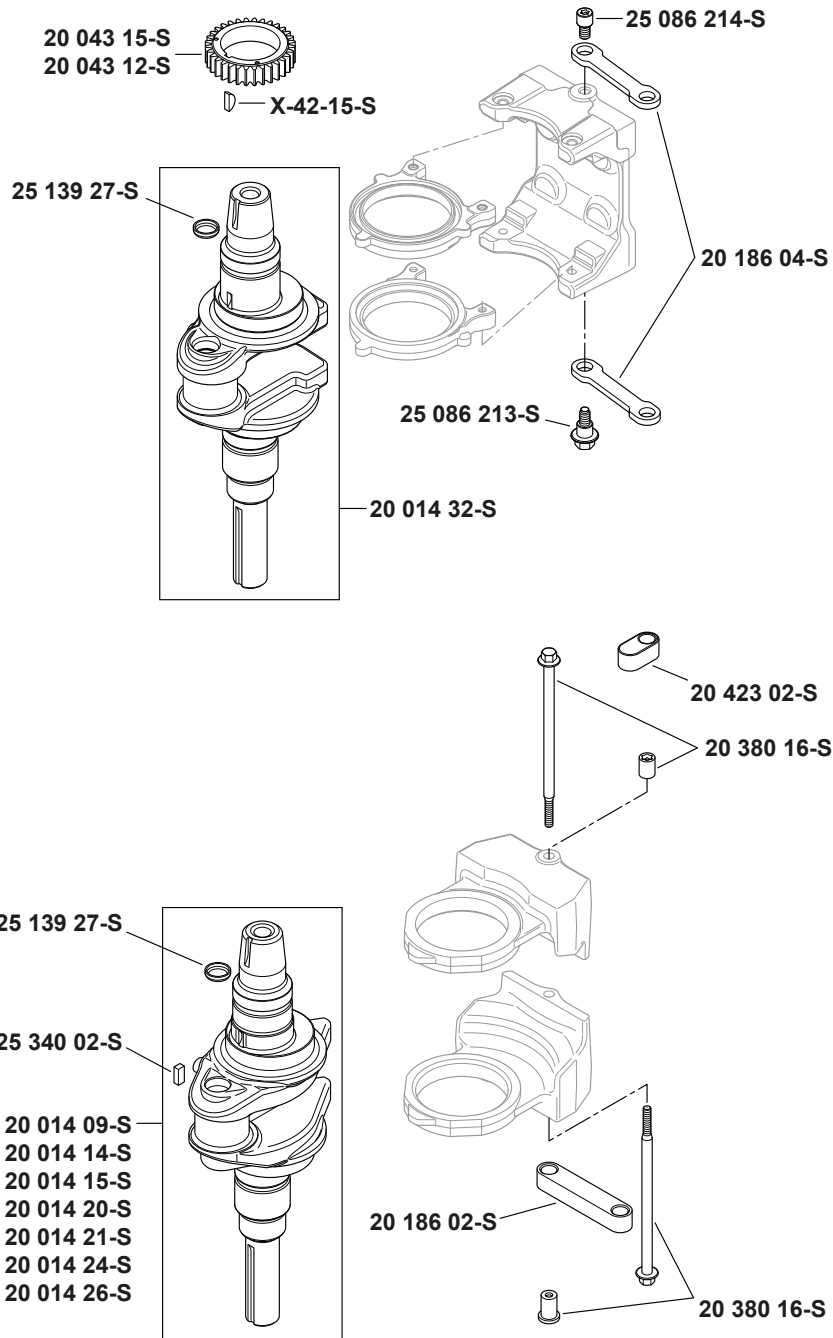
KEY NO.	PART NO.	DESCRIPTION
7	414395	Vent Valve 15
8	414396	Magnet
9	414397	Magnet Holder
10	415923	Pump Shaft/Bearing Kit
13	414398	Bypass Lever
15	414399	Sealing Cap 30
16	414400	Snap Ring C 35
19	414401	O-Ring 1a P10a
20	414402	Seal Tc 153507
33	414403	Pump Shaft (Standard)
34	414404	E-Ring 15
35	414405	Bearing 6202c3
53	414431	Control Lever F
55	415924	Washer 12
58	415925	Roll Pin 6 * 40
59	415926	O-Ring 1a P14
60	415927	Nut 12
72	414407	Seal 19 * 32 * 8
76	414408	Brake Lever

KEY NO.	PART NO.	DESCRIPTION
78	414409	Brake Return Spring
80	414410	Spring Pln 5 * 32
81	414411	O-Ring 1a P12
82	414412	Spring Pin 4 * 16
83	414413	Spine Collar
84	414414	Pulley L
85	414415	Fan, Black
86	414416	Wave Washer
87	414417	Snap Ring
90	414418	Spring Pin 3.0a * 20
91	414419	Oil Seal 16 * 22 *.03
95	414850	Spring Pin 3.0a*16
96	414420	Roll Pin 3.5 * 40
115	415928	Switch 6440-11 Delta
116	415929	Switch Bracket
117	415930	Tapping Screw 8 * 20

**NOTE:** All component dimensions given in U.S. inches  
1 inch = 25.4 mm

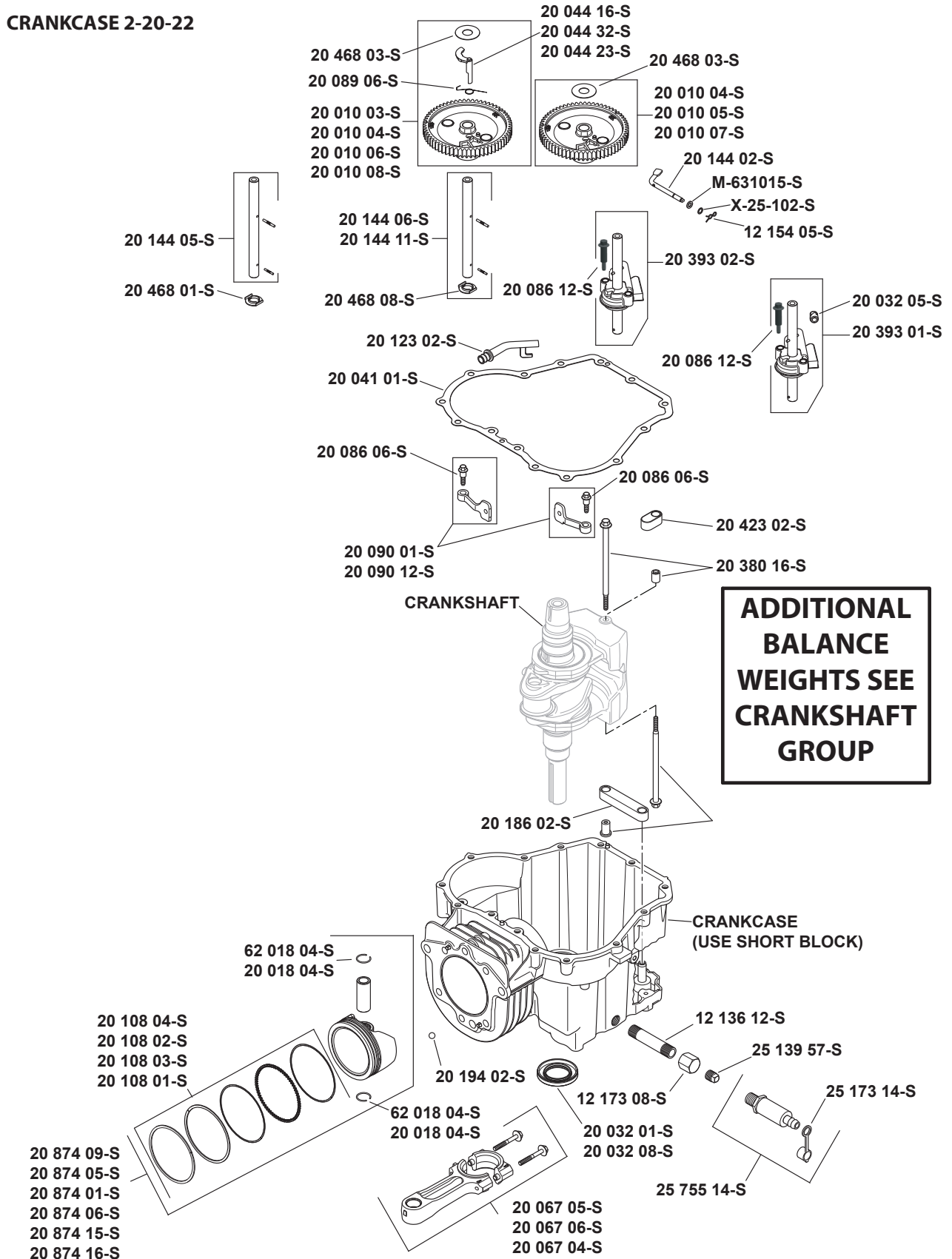
**TRACTOR - - MODEL NUMBER 917.240462, PRODUCT NO. YTH20K46**  
**KOHL ENGINE - MODEL NO. SV600-0212**

**CRANKSHAFT 1-20-4**



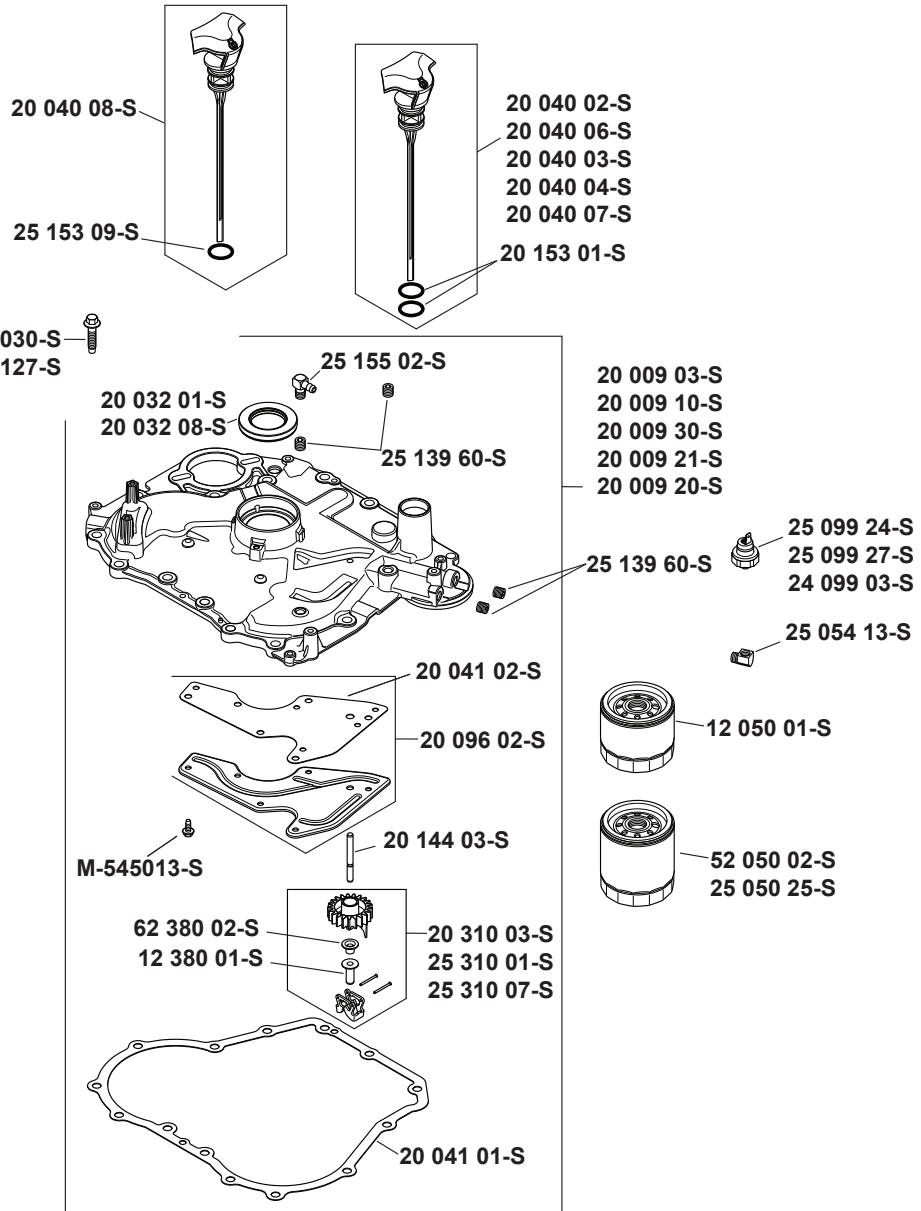
**TRACTOR - - MODEL NUMBER 917.240462, PRODUCT NO. YTH20K46**  
**KOHL ENGINE - MODEL NO. SV600-0212**

**CRANKCASE 2-20-22**



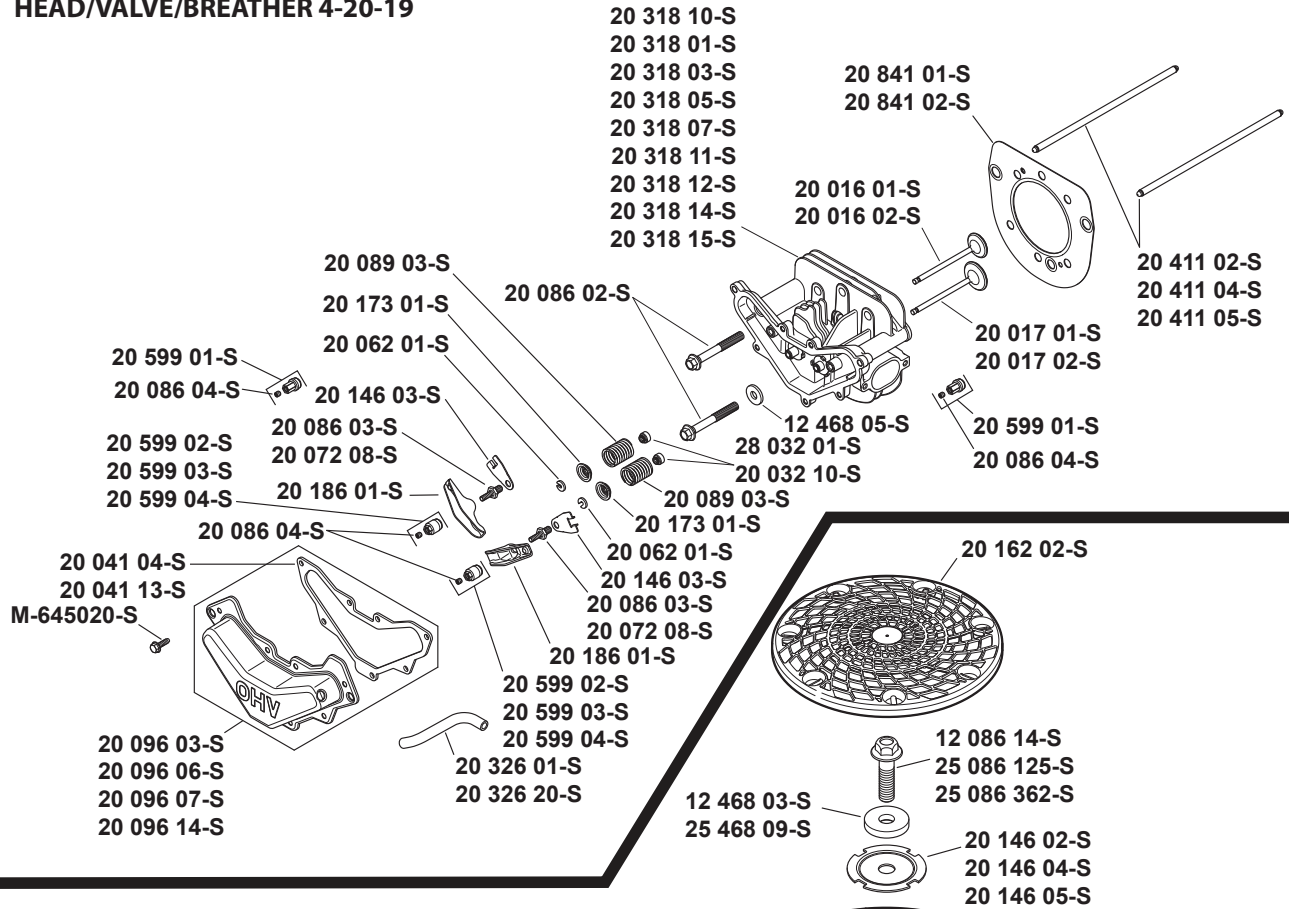
**TRACTOR - - MODEL NUMBER 917.240462, PRODUCT NO. YTH20K46**  
**KOHL ENGINE - MODEL NO. SV600-0212**

**OIL PAN/LUBRICATION 3-20-40**

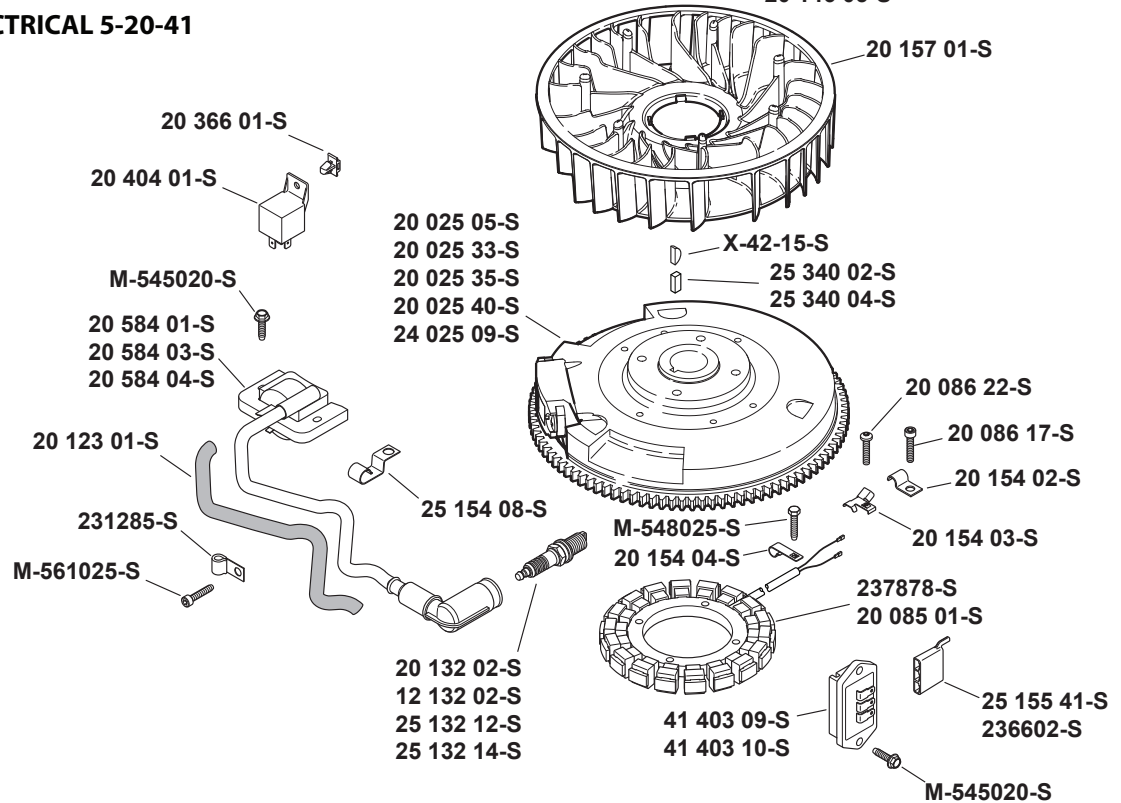


**TRACTOR - - MODEL NUMBER 917.240462, PRODUCT NO. YTH20K46**  
**KOHL ENGINE - MODEL NO. SV600-0212**

**HEAD/VALVE/BREATHER 4-20-19**



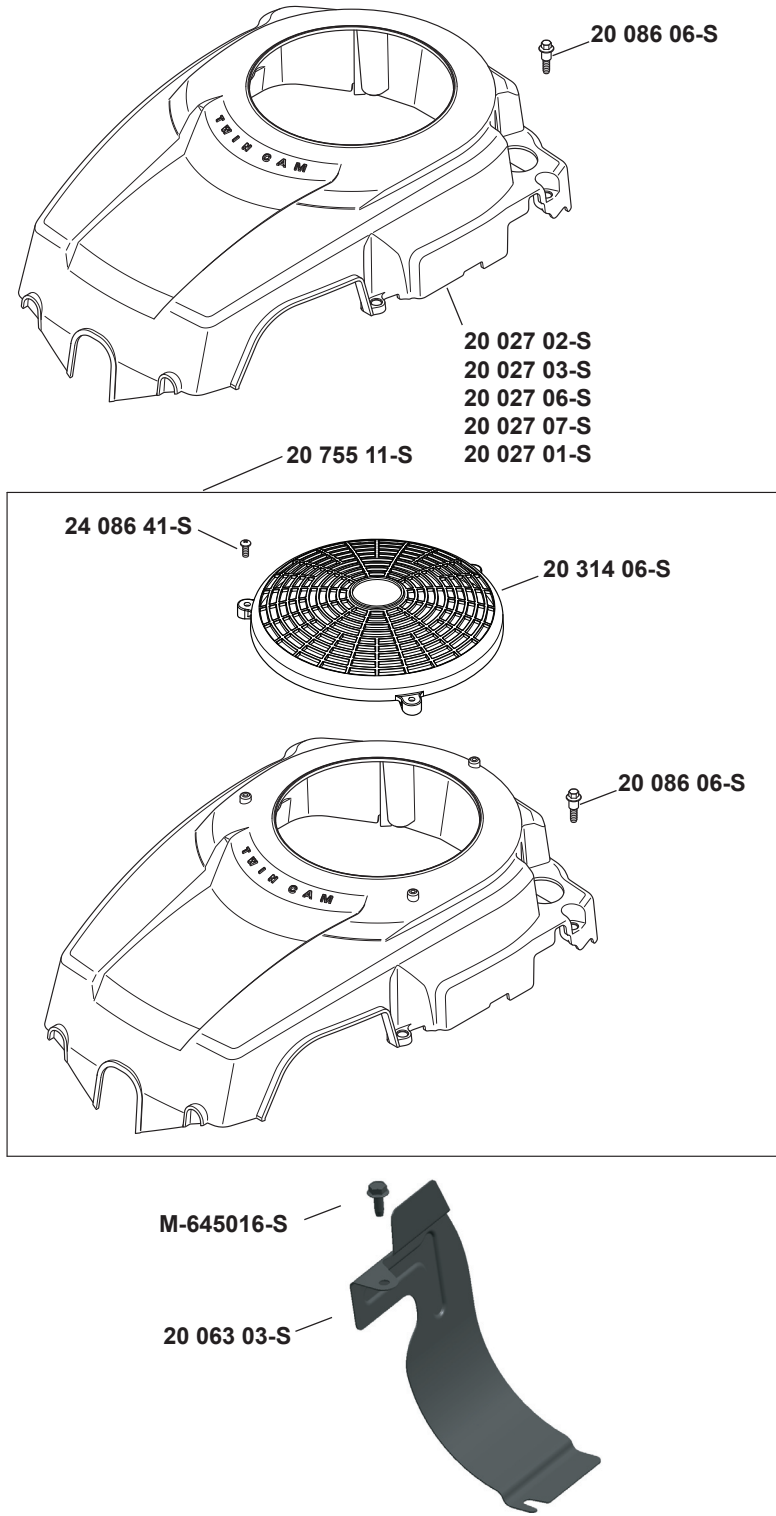
**IGNITION/ELECTRICAL 5-20-41**



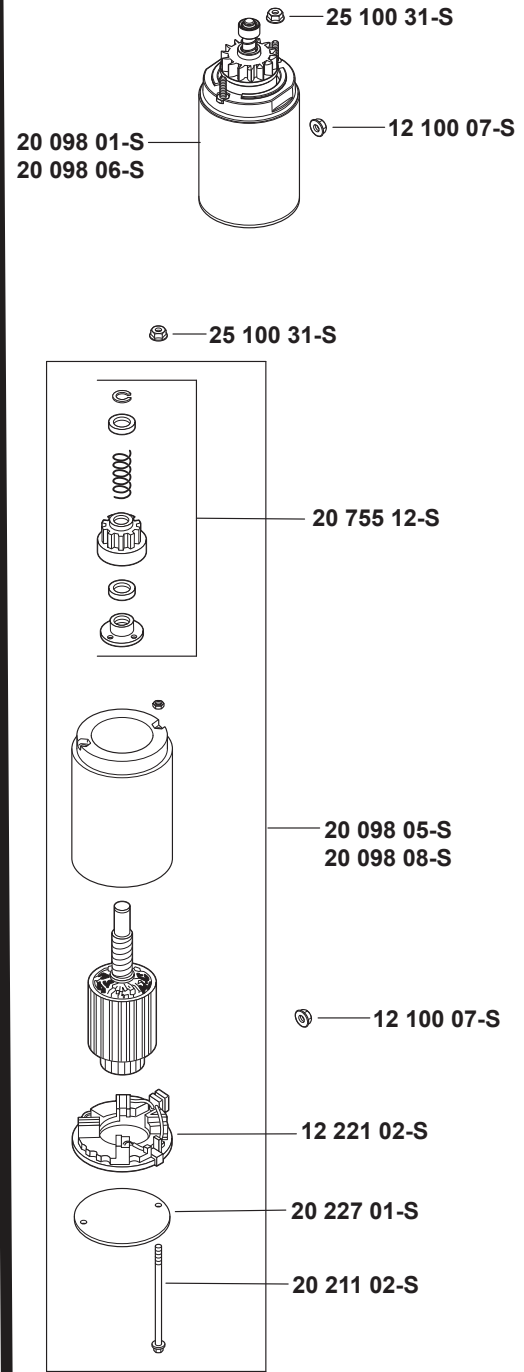


**TRACTOR - - MODEL NUMBER 917.240462, PRODUCT NO. YTH20K46**  
**KOHL ENGINE - MODEL NO. SV600-0212**

**BLOWER HOUSING & BAFFLES 6-20-7**

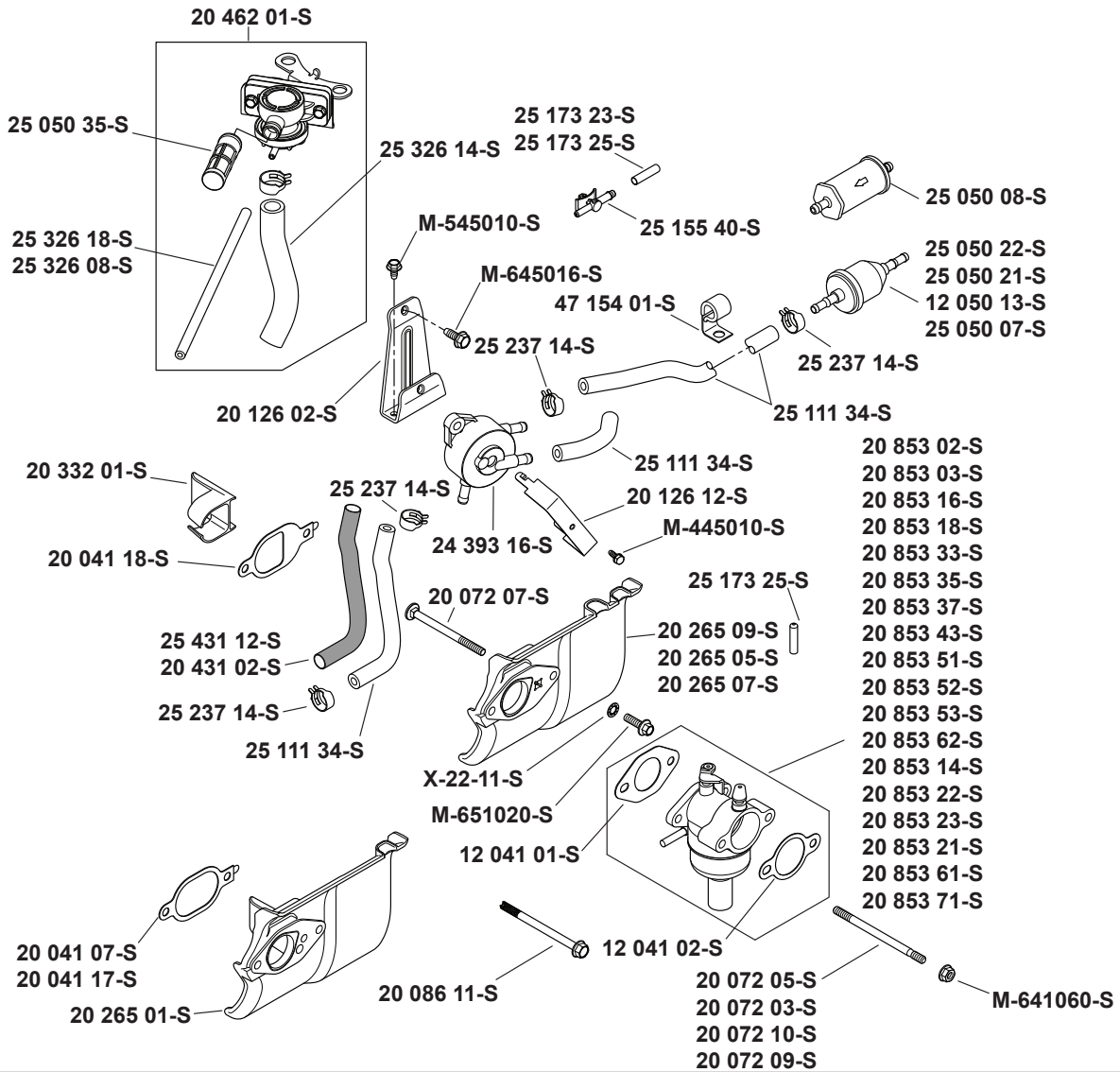


**STARTING SYSTEM 7-20-1**

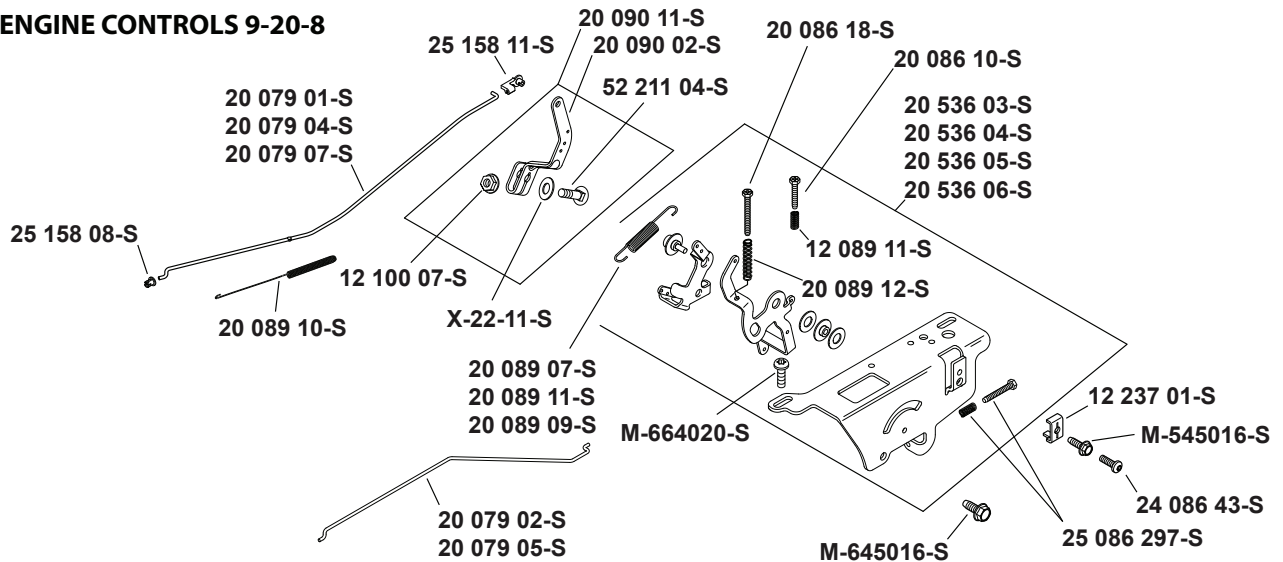


**TRACTOR - - MODEL NUMBER 917.240462, PRODUCT NO. YTH20K46**  
**KOHL ENGINE - MODEL NO. SV600-0212**

**FUEL SYSTEM 8-20-132**

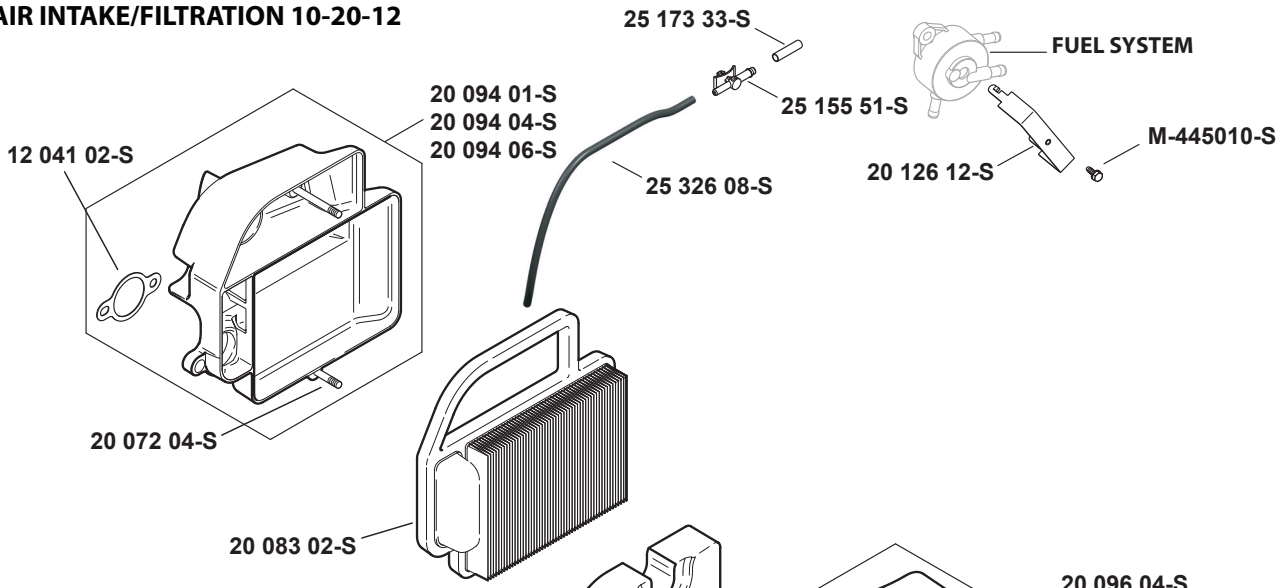


**ENGINE CONTROLS 9-20-8**

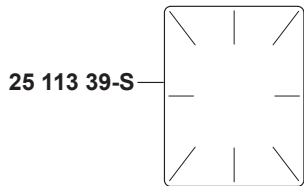


**TRACTOR - - MODEL NUMBER 917.240462, PRODUCT NO. YTH20K46**  
**KOHL ENGINE - MODEL NO. SV600-0212**

**AIR INTAKE/FILTRATION 10-20-12**

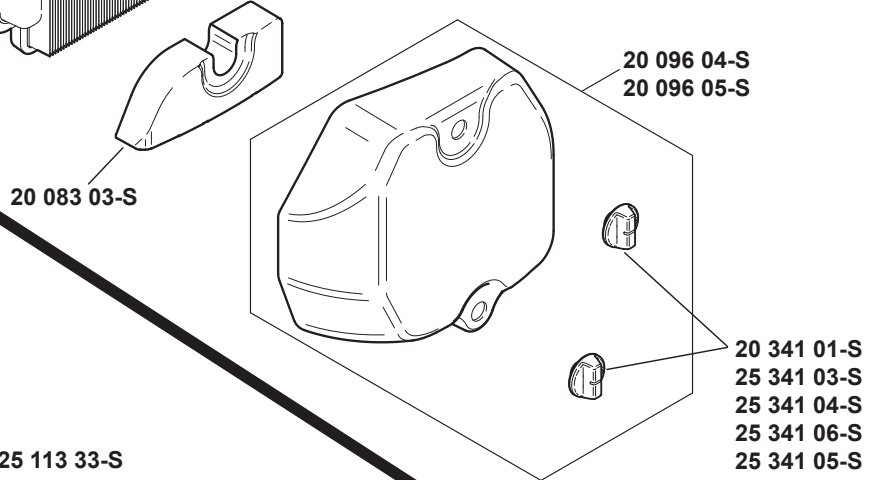


**DECALS 12-20-23**

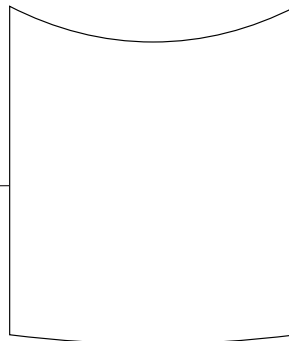


**25 113 39-S**

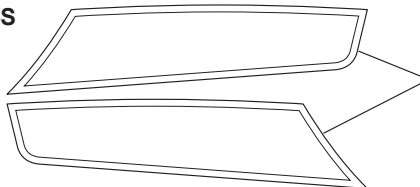
**⚠ WARNING**  
**DO NOT TOUCH SCREEN WITH ENGINE RUNNING.**  
25 113 33



- 20 113 09-S
- 20 113 10-S
- 20 113 11-S
- 20 113 12-S
- 20 113 13-S
- 20 113 14-S
- 20 113 15-S
- 20 113 27-S
- 20 113 36-S
- 20 113 48-S
- 20 113 49-S
- 20 113 55-S
- 20 113 56-S
- 20 113 57-S
- 20 113 58-S



- 20 113 35-S
- 20 113 21-S
- 20 113 22-S
- 20 113 31-S
- 20 113 26-S
- 20 113 41-S
- 20 113 25-S
- 20 113 28-S
- 20 113 34-S
- 20 113 38-S
- 20 113 51-S
- 20 113 50-S
- 20 113 52-S
- 20 113 53-S



- 20 113 24-S
- 20 113 37-S
- 20 113 23-S
- 20 113 30-S
- 20 113 54-S
- 20 113 54-S

Artwork is representative.

Actual labels may differ depending on model and specification number.

**TRACTOR - - MODEL NUMBER 917.240462, PRODUCT NO. YTH20K46**  
**KOHL ENGINE - MODEL NO. SV600-0212**

**CRANKSHAFT 1-20-4**

PART NO.	QTY.	DESCRIPTION
20 014 32-S	1	Kit, Crankshaft Assembly (Includes 25 139 27-S)
25 139 27-S	1	Plug, Cup
X-42-15-S	1	Key, 3/16" X 5/8"
20 043 15-S	1	Gear, Crankshaft
25 086 137-S	4	Screw, Flg M6x1.0x25
25 086 214-S	1	Screw, Link Pivot
20 186 04-S	2	Linkage, Balance Weight
25 086 213-S	1	Screw, Shoulder

**CRANKCASE 2-20-16**

PART NO.	QTY.	DESCRIPTION
	1	Crankcase (Use Short Block)
20 032 01-S	1	Seal, Oil
20 067 05-S	1	Rod, Connecting Assembly
20 874 09-S	1	Kit, Piston W/Ring Set (94Mm) (Includes 20 108 04-S, 62 018 04-S)
20 108 04-S	1	Ring Set (94Mm)
62 018 04-S	2	Retainer, Piston Pin
20 090 01-S	2	Kit, Cam Lever Assembly (Includes 20 086 06-S)
20 086 06-S	2	Screw, Shd Thd Frm M6x1x26
20 041 01-S	1	Gasket, Closure Plate
20 123 02-S	1	Tube, Drainback
12 154 05-S	1	Clip, Hitch Pin
M-631015-S	1	Washer, Flat 6 Mm
X-25-102-S	1	Washer, Flat 1/4"
20 144 02-S	1	Shaft, Governor Cross
20 393 02-S	1	Kit, Oil Pump Assembly (Includes 20 041 01-S, 20 112 02-S, 20 086 13-S)
20 112 02-S	2	Spacer, Oil Pump Screw
20 086 13-S	2	Screw, Oil Pump
20 144 11-S	1	Kit,Cam Center Shaft (Exhaust) (Includes 20 468 08-S)
20 468 08-S	1	Washer, Thrust
20 010 04-S	1	Kit, Camshaft Assembly (Includes 20 089 06-S, 20 044 23-S, 20 468 03-S)
20 089 06-S	1	Spring, Acr
20 468 03-S	1	Washer, Thrust -Acr
20 010 04-S	1	Kit, Camshaft Assembly (Includes 20 468 03-S)
20 468 03-S	1	Washer, Thrust -Acr
25 139 57-S	1	Plug, Sq Hd Pipe 3/8"
20 044 16-S	1	Use 20 044 23-S Acr Weight

**OIL PAN/LUBRICATION 3-20-28**

PART NO.	QTY.	DESCRIPTION
20 040 06-S	1	Dipstick Assembly-Std Yellow (Includes 20 153 01-S)
20 153 01-S	2	O-Ring
20 009 30-S	1	Closure Plate Assembly(Includes 25 139 60-S, 20 096 02-S, 20 041 02-S, 20 144 03-S, 25 310 07-S, 12 380 01-S, 20 041 01-S, M-545013-S, 20 032 01-S, 25 155 02-S)
25 139 60-S	4	Plug, Ctsk Pipe 1/8"
20 096 02-S	1	Kit, Oil Passage Cover (Includes 20 041 02-S)
20 041 02-S	1	Gasket, Oil Passage
20 144 03-S	1	Shaft, Governor Cross
25 310 07-S	1	Governor Gear Assembly (Includes 12 380 01-S, 62 380 02-S)
12 380 01-S	1	Pin, Governor Regulating

20 041 01-S	1	Gasket, Closure Plate
M-545013-S	6	Screw, Flg Thd Frm M5x0.8x13
20 032 01-S	1	Seal, Oil
25 155 02-S	1	Connector, 90° Hose
25 086 127-S	14	Hex Flange Screw,1/2 Dog Point
52 050 02-S	1	Filter, Oil

**HEAD/VALVE/BREATHER 4-20-1**

PART NO.	QTY.	DESCRIPTION
20 096 07-S	1	Kit, Valve Cover (Includes 20 041 13-S)
20 041 13-S	1	Gasket, Valve Cover
M-645020-S	7	Screw, Flg Thd Frm M6x1.0x20
20 326 20-S	1	Hose, Breather
20 599 04-S	2	Rocker Pivot Assembly (Includes 20 086 04-S)
20 086 04-S	2	Screw, Set
20 186 01-S	2	Arm, Rocker
20 072 08-S	2	Stud, Rocker
20 146 03-S	2	Plate, Push Rod Guide
20 062 01-S	2	Lock, Retainer
20 173 01-S	2	Cap, Valve Spring
20 089 03-S	2	Spring, Valve
12 468 05-S	1	Washer, Flat 13/32"
20 086 02-S	6	Screw, Flg M10x1.5x80
20 016 01-S	1	Valve, Exhaust
20 017 01-S	1	Valve, Exhaust
20 841 01-S	1	"Kit, Cylinder Head Gasket (Includes 12 041 01-S, 12 041 02-S, 12 468 05-S, 20 041 12-S, 20 041 13-S, 20 041 17-S, 20 041 18-S, 20 086 02-S, 25 086 87-S & X-21-1-S)"
20 411 04-S	2	Rod, Push
20 318 11-S	1	Kit, Cylinder Head (Includes 25 086 87-S & X-21-1-S)
20 599 03-S	2	Kit Pivot, Rocker Arm (Includes 20 086 04-S)

**NOT ILLUSTRATED**

12 041 01-S	1	Gasket, Carburetor
12 041 02-S	1	Gasket, Air Cleaner Base
20 041 12-S	1	Gasket, Exhaust
20 041 18-S	1	Gasket, Heat Deflector
20 041 17-S	1	Gasket, Heat Deflector
25 086 87-S	2	Screw, Hex Socket Head Cap
X-21-1-S	2	Washer, Spring Lock 5/16"

**IGNITION/ELECTRICAL 5-20-1**

PART NO.	QTY.	DESCRIPTION
20 162 02-S	1	Screen, Grass
25 086 125-S	1	Screw, Hex Flange
25 468 09-S	1	Washer, Flat
20 146 05-S	1	Plate, Fan Mounting
20 157 01-S	1	Fan
25 340 02-S	1	Key, Straight Flywheel
20 025 40-S	1	Flywheel
M-548025-S	2	Screw, Thd Frm M5x0.8x25
20 154 04-S	1	Clip, Wire
237878-S	1	Kit, 15 Amp Stator (Includes 25 452 01-S)
25 155 41-S	1	Connector
M-545020-S	2	Screw, Flg Thd Frm M5x.8X20
41 403 10-S	1	Regulator/Rectifier
20 584 03-S	1	Module, Ignition (Cdi Fixed)
M-545020-S	2	Screw, Flg Thd Frm M5x.8X20
12 132 02-S	1	Plug, Spark (Std)

**TRACTOR - - MODEL NUMBER 917.240462, PRODUCT NO. YTH20K46**  
**KOHL ENGINE - MODEL NO. SV600-0212**

**NOT ILLUSTRATED**

20 176 13-S	1	Harness, Wiring
25 452 01-S	2	Terminal
25 454 05-S	1	Tie

**BLOWER HOUSING & BAFFLES 6-20-5**

**PART NO. QTY. DESCRIPTION**

20 027 07-S	1	Kit, Blower Housing (Includes 41 037 10-S)
20 086 06-S	4	Screw, Shd Thd Frm M6x1x26

**NOT ILLUSTRATED**

41 037 10-S	1	Nameplate, Service
-------------	---	--------------------

**STARTING SYSTEM 7-20-1**

**PART NO. QTY. DESCRIPTION**

20 098 05-S	1	Starter Assembly (Service With 12 221 02-S, 20 755 12-S, 20 227 01-S, 20 211 02-S)
25 100 31-S	2	Nut, Free Spinning Flg #10-24
12 221 02-S	1	Brush Kit
20 755 12-S	1	Kit, Drive (J.E.)
20 227 01-S	1	Cap, Drive End (J.E.)
20 211 02-S	1	Bolt, Thru

**FUEL GROUP 8-20-40**

**PART NO. QTY. DESCRIPTION**

25 237 14-S	4	Clamp, Hose 1/2"
25 111 34-S	2	Line, Fuel (24"-Cut To Length)
20 265 09-S	1	Kit, Heat Deflector (Includes 12 041 02-S, 20 041 18-S, 20 072 07-S, 20 332 01-S)
X-22-11-S	1	Washer, Int Tooth Lock 1/4"
M-651020-S	1	Screw, Flg M6x1.0x20
20 853 35-S	1	Kit, Carburetor (Includes 12 041 01-S, 12 041 02-S) (S/W 12 755 109-S, 12 755 110-S, 12 757 02-S, 12 757 03-S, 12 757 33-S, 12 757 37-S, 20 755 07-S)
12 041 01-S	1	Gasket, Carburetor
12 041 02-S	1	Gasket, Air Cleaner Base
20 072 05-S	1	Stud, M6x1.0x100
M-641060-S	2	Nut, Flg M6x1.0
20 072 07-S	1	Stud, Carburetor
20 041 18-S	1	Gasket, Heat Deflector
20 332 01-S	1	Insert, Intake Port
25 050 21-S	1	Filter, Fuel

**NOT ILLUSTRATED**

25 454 05-S	1	Tie
12 755 109-S	1	Kit, High Alt(5000 Or 10000 Ft)
12 755 110-S	1	Kit, Repair Choke
12 757 02-S	1	Kit, Repair Float
12 757 03-S	1	Kit, Repair Carburetor
12 757 33-S	1	Kit, Repair Solenoid
12 757 37-S	1	Kit, Repair Bowl Replacement
20 755 07-S	1	Kit, High Altitude (10,000 Ft)

**ENGINE CONTROLS 9-20-8**

**PART NO. QTY. DESCRIPTION**

20 536 06-S	1	Kit, Speed Control Assembly (Includes 25 086 297-S, 20 089 12-S, M-66420-S [Qty.1], 20 089 11-S, 20 086 18-S, 20 086 10-S, 12 089 11-S)
25 086 297-S	1	Kit, Idle Adj Screw & Spring
20 089 12-S	1	Spring, Speed Control (Long)
12 237 01-S	2	Clamp, Cable

M-664020-S	2	Screw, Lbd Skt M6x1.0x20
20 090 11-S	1	Lever, Governor Assembly (Includes 9-11)
52 211 04-S	1	Bolt, Rd Hd Sq Nck 1/4-20X1"
X-22-11-S	1	Washer, Int Tooth Lock 1/4"
12 100 07-S	1	Nut, Hex Flg 1/4-20"
25 158 11-S	1	Bushing, Throttle Linkage
20 079 07-S	1	Linkage, Throttle
25 158 08-S	1	Bushing, Linkage Retaining
20 089 10-S	1	Spring, Linkage
20 079 05-S	1	Linkage, Choke
20 086 18-S	1	Screw, Phl Thd Frm M4x0.7x38
24 086 43-S	1	Screw, Lbd Thd Frm M5x0.8x16
20 086 10-S	1	Screw, Phl Thd Frm M4x0.7x25
12 089 11-S	1	Spring, Speed Control (Short)

**AIR INTAKE/FILTRATION 10-20-9**

**PART NO. QTY. DESCRIPTION**

20 096 04-S	1	Kit, Air Cleaner Cover (Includes 25 341 04-S)
25 341 04-S	2	Knob, Cover
20 083 02-S	1	Element, Air Cleaner
20 094 04-S	1	Kit, Air Cleaner Base (Includes 12 041 02-S, 20 072 04-S)
20 072 04-S	2	Stud, Air Cleaner Base
12 041 02-S	1	Gasket, Air Cleaner Base

**DECALS 12-20-23**

**PART NO. QTY. DESCRIPTION**

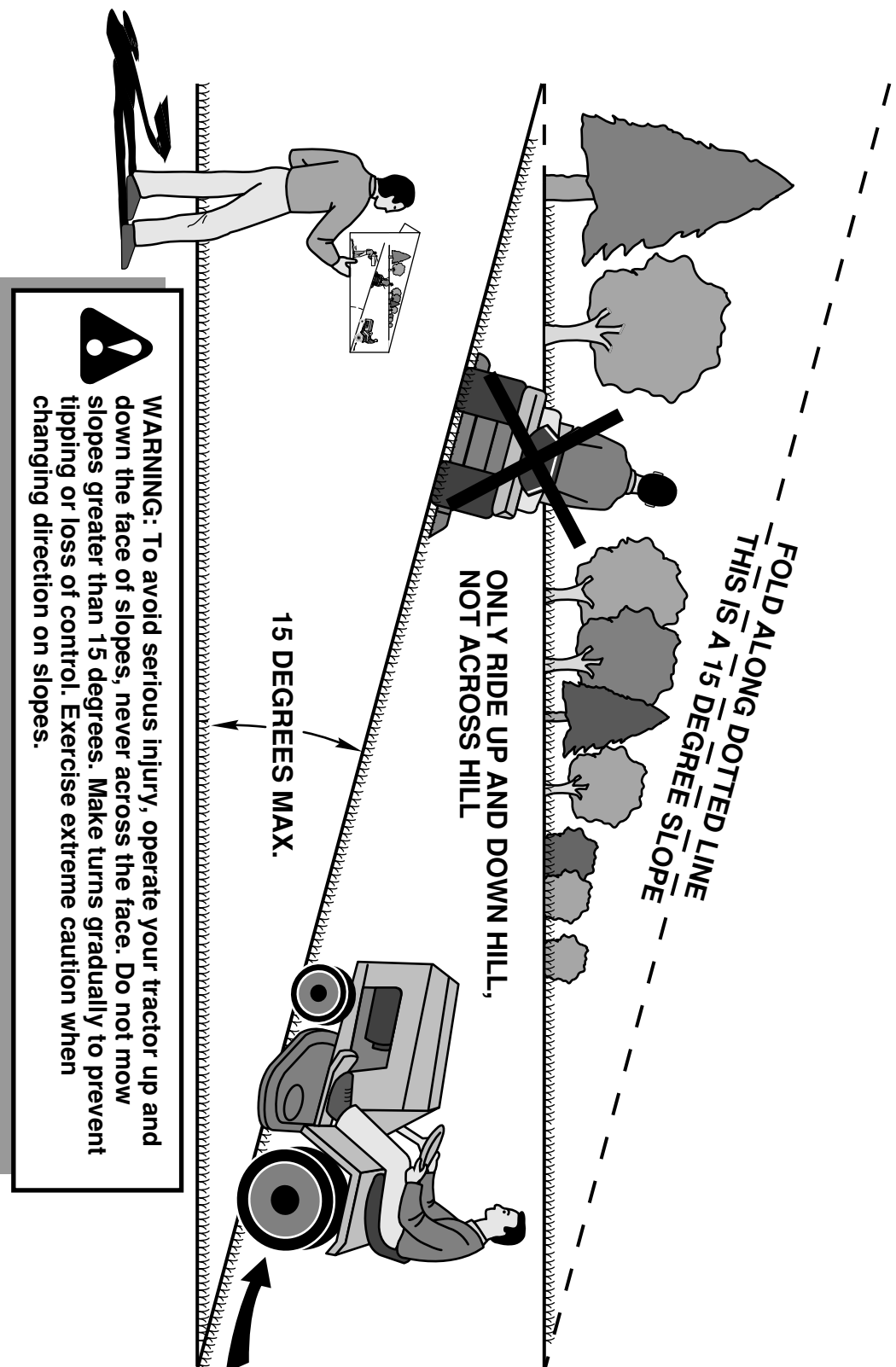
20 113 36-S	1	Decal, 20Hp
20 113 37-S	1	Decal, Wing Set
25 113 39-S	1	Decal, Clear Laminate

**ACCESSORIES FOR SV600-0212**

**PART NO. QTY. DESCRIPTION**

20 041 12-S	1	Gasket, Exhaust
-------------	---	-----------------

# SUGGESTED GUIDE FOR SIGHTING SLOPES FOR SAFE OPERATION



---

# SERVICE NOTES

---



---

# SERVICE NOTES

---

