

CTH192

Spare parts

Ersatzteile

Pièces détachées

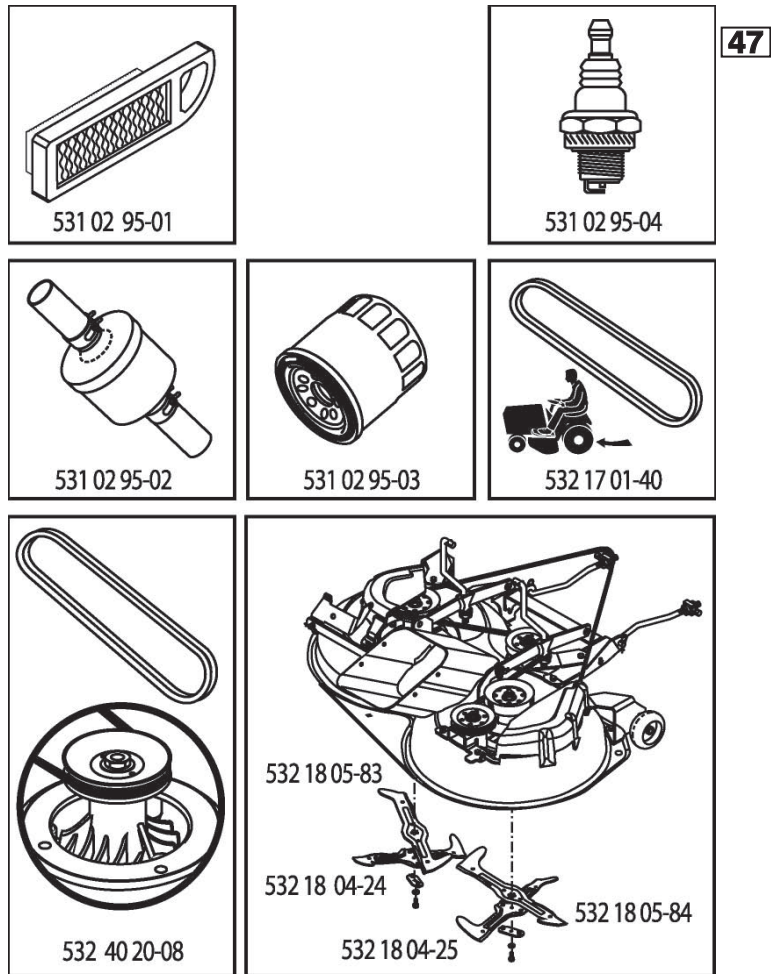
Reserve onderdelen

Repuestos

Reservdelar

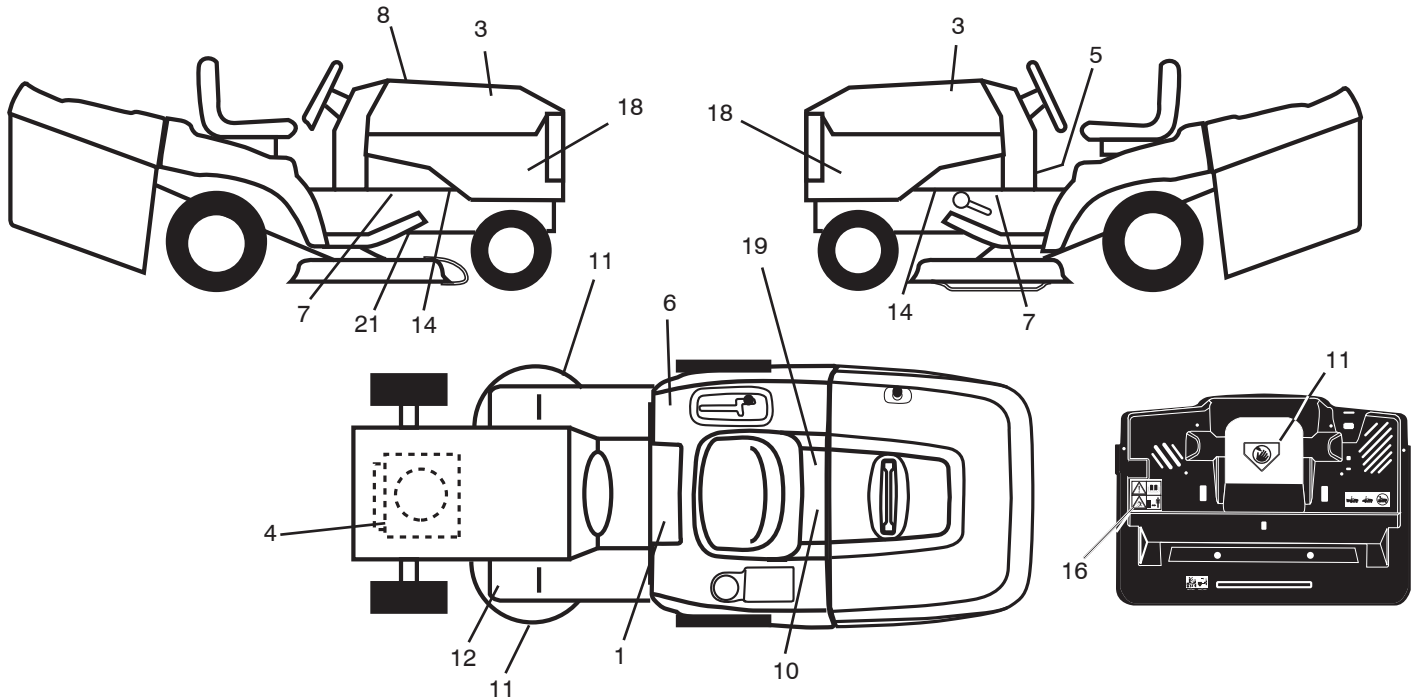
ILLUSTRATED PARTS LIST

MODEL NO. 96061031700
CUSTOMER CATALOG NO. CTH192
PRODUCT NO. 960 61 03-17



409725

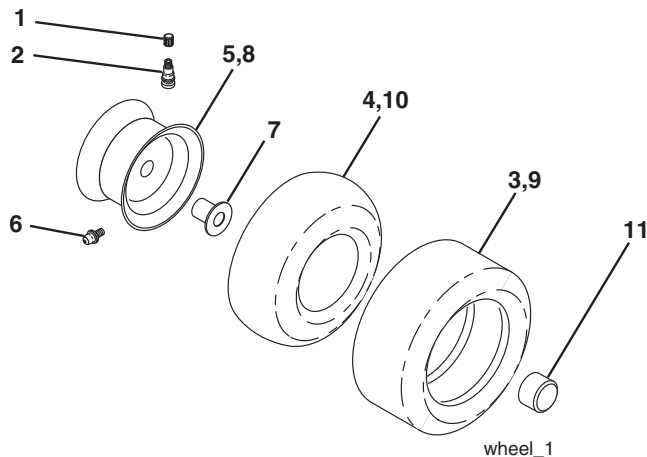
**TRACTOR - - MODEL NO. CTH192 (96061031700), PRODUCT NO. 960 61 03-17
DECALS 27**



KEY NO.	PART NO.	DESCRIPTION
1	532 40 03-89	Decal, Warning Syms. CE
3	581 62 73-01	Decal, Badge
4	532 19 68-41	Decal, Warning Eng. Syms.
5	532 44 02-48	Decal, INstruction
6	532 18 04-32	Decal, 100 DBA/CE
7	532 40 11-46	Decal, Warning Service Fire
8	532 40 97-25	Decal, RPL
10	532 14 50-05	Decal, Bat Dan/Poi P/L Sym Wpn
11	532 18 21-66	Decal, Mower Cut Finger CE
12	532 15 97-37	Decal, Brake/Clutch Symbol Lt

KEY NO.	PART NO.	DESCRIPTION
14	532 15 97-36	Decal, Chassis Hot Muffler
16	532 18 04-35	Decal, Backplate
18	532 44 05-54	Decal, Side Panel
19	532 14 08-37	Decal, Parking Brake Saddle
21	532 16 62-86	Decal, Hex Belt Sch 92 CRD
--	532 16 69-60	Decal, Bypass
--	532 13 83-11	Decal, Handle
--	532 44 06-48	Pad Footrest LH
--	532 44 14-94	Pad Footrest RH
--	532 44 10-85	Manual Operator's Euro

WHEELS & TIRES

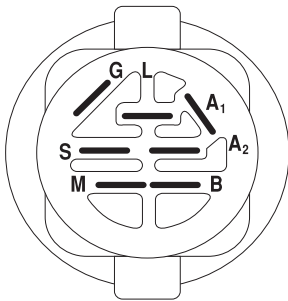
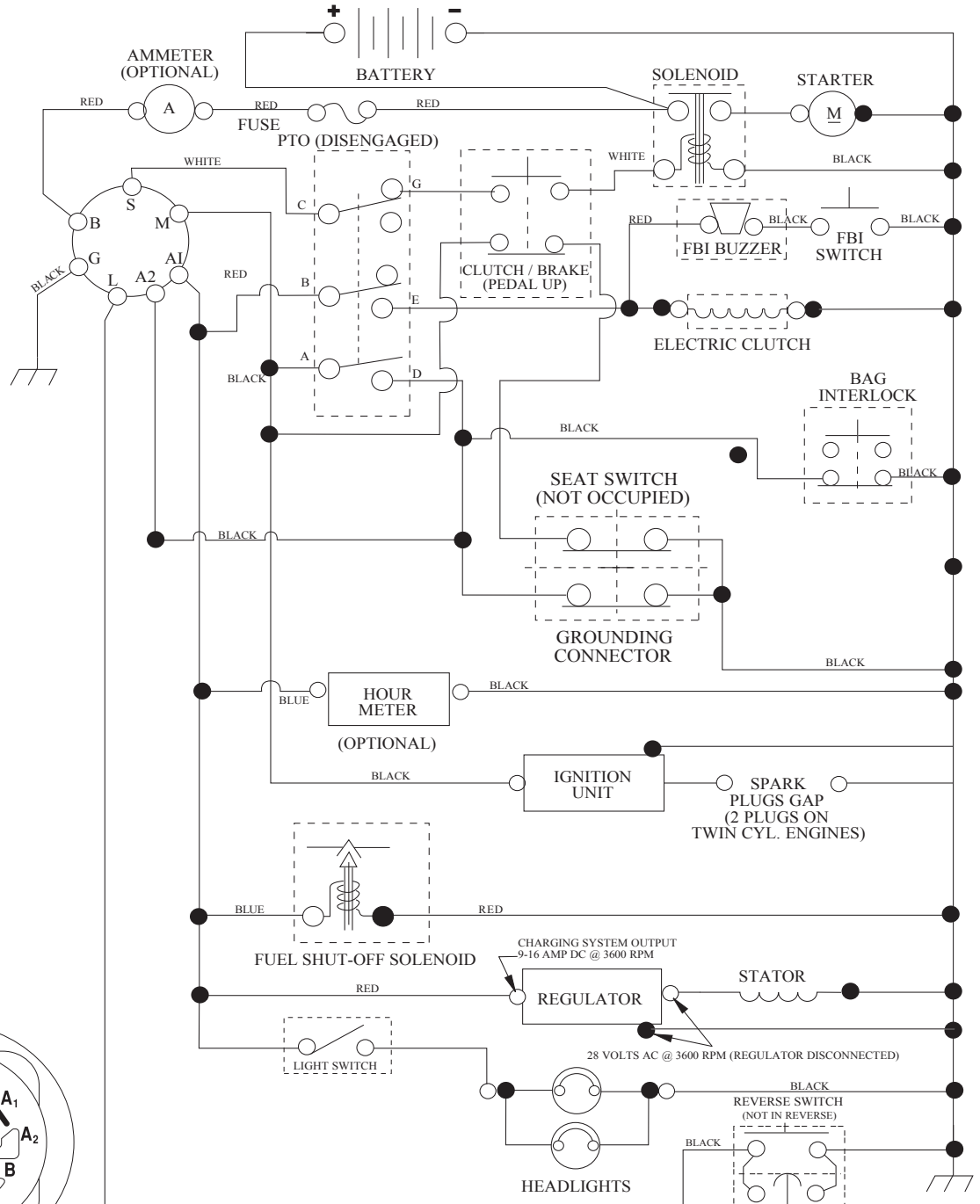


KEY NO.	PART NO.	DESCRIPTION
1	532 05 91-92	Cap Valve Tire
2	532 06 51-39	Stem Valve
3	532 10 62-22	Tire F Ts 15 x 6 0 - 6 Service
4	532 05 99-04	Tube Inner Front #35060
5	532 13 83-36	Rim Asm 6" Front Service
6	532 12 49-57	Fitting Grease
7	532 12 49-59	Bearing Flange
8	532 13 83-37	Rim Asm 8" Rear Service
9	532 12 20-82	Tire R Ts 20 x 10-8 C.Service
10	532 12 49-26	Tube Rear 9 5 x 8 Service
11	532 17 50-39	Cap Axle Blk 1 50 x 1 00
--	532 14 43-34	Sealant, Tire (10 oz. tube)

NOTE: All component dimensions given in U.S. inches
1 inch = 25.4 mm

TRACTOR - - MODEL NO. CTH192 (96061031700), PRODUCT NO. 960 61 03-17 SCHEMATIC 38

SCH05



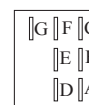
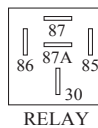
IGNITION SWITCH

POSITION	CIRCUIT	"MAKE"
OFF	M+G+A1	
RUN/OVERRIDE	B+A1	
RUN	B+A1	L+A2
START	B + S + A1	

03048

WIRING INSULATED CLIPS
NOTE: IF WIRING INSULATED CLIPS WERE REMOVED FOR SERVICING OF UNIT, THEY SHOULD BE RE-INSTALLED TO PROPERLY SECURE YOUR WIRING.

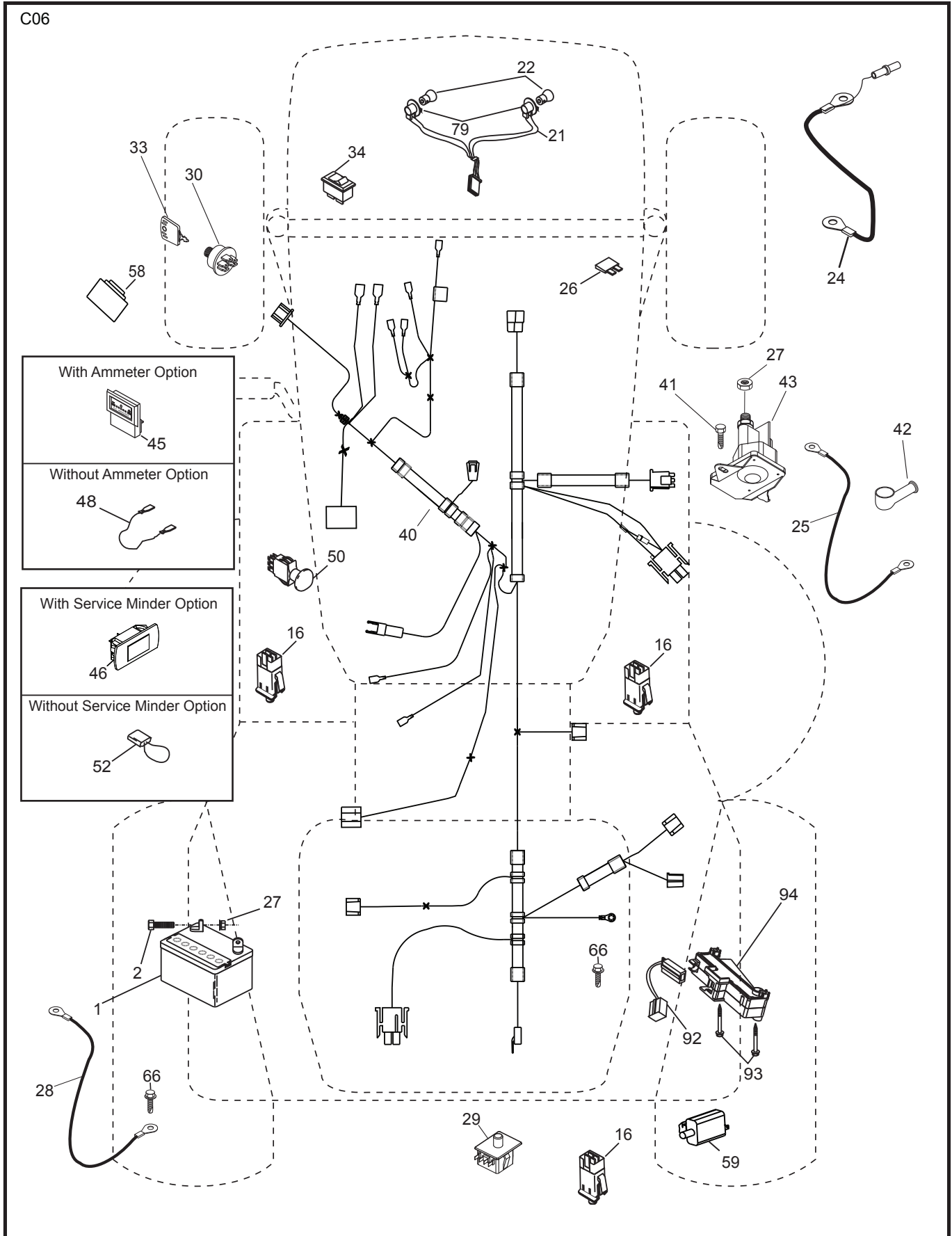
POSITION	CIRCUIT
OFF	C + G, B + H
ON	C + F, B + E, A + D



NON-REMOVABLE CONNECTIONS

REMOVABLE CONNECTIONS

TRACTOR - - MODEL NO. CTH192 (96061031700), PRODUCT NO. 960 61 03-17
 ELECTRICAL **32**

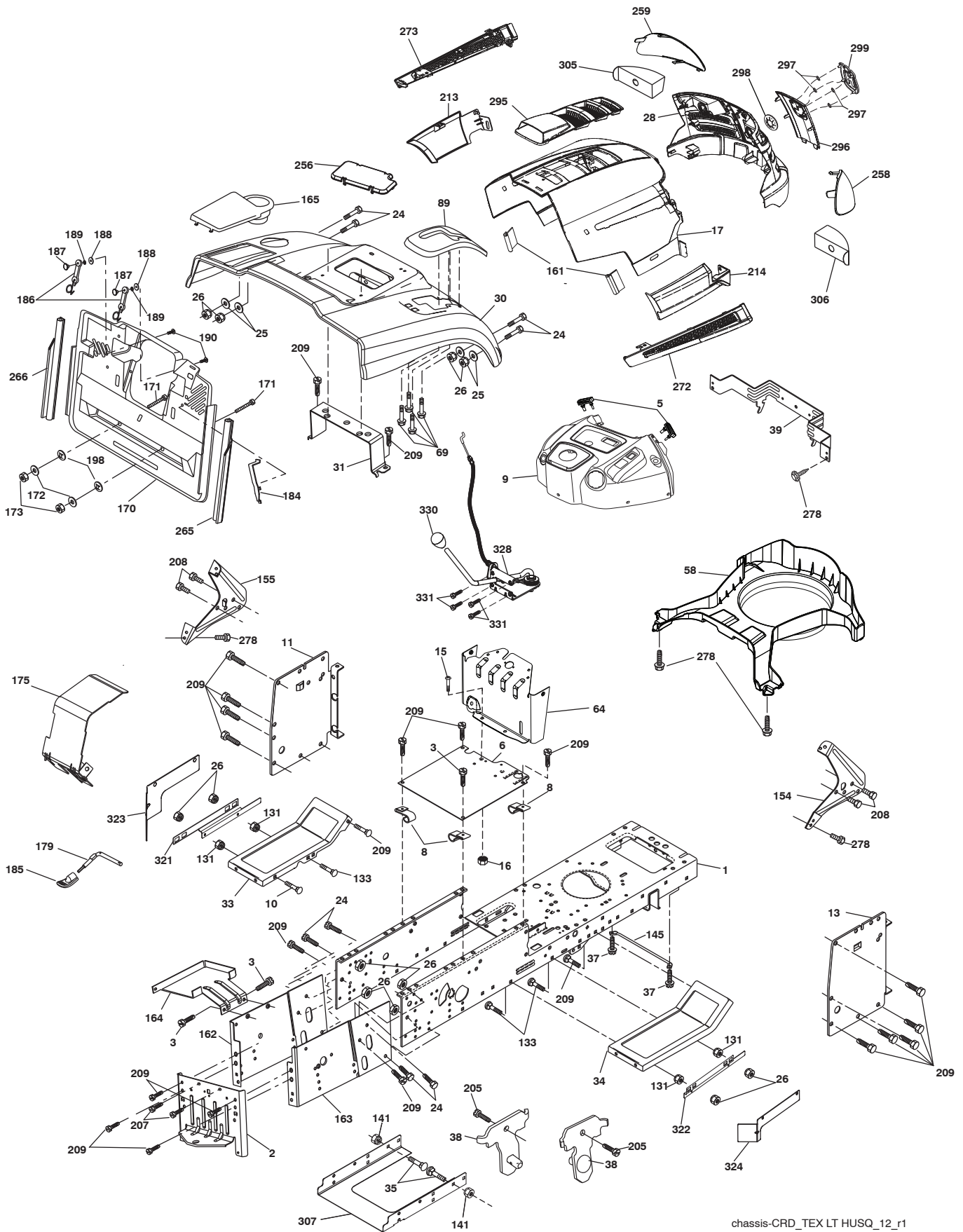


**TRACTOR - - MODEL NO. CTH192 (96061031700), PRODUCT NO. 960 61 03-17
ELECTRICAL 32**

KEY NO.	PART NO.	DESCRIPTION
1	532 16 34-65	Battery
2	874 76 04-12	Bolt Hex Hd 1/4-20 unc x 3/4
16	532 17 61-38	Switch Interlock Push-In
21	532 40 02-52	Harness Asm. Light
22	532 00 41-52	Bulb Light #1156
24	532 16 59-87	Cable Battery CRD 56" Red
25	532 42 12-99	Cable Starter 6 Ga. 11" Red
26	532 17 51-58	Fuse 20 Amp
27	873 51 04-00	Nut Keps Hex 1/4-20 unc
28	532 12 77-25	Cable Ground 6 Ga. 18" Black
29	532 19 27-49	Switch Seat
30	532 19 33-50	Switch Ignition
33	532 41 19-35	Key/Chain
34	532 11 07-12	Switch Light/Reset
40	532 19 74-34	Harness Ign
41	871 11 04-08	Bolt Flk Fin Hex 1/4-20 unc x 1/2
42	532 13 15-63	Cover Terminal Red
43	532 19 25-07	Solenoid
45	532 14 08-44	Ammeter
46	532 40 17-63	Hourmeter
48	532 14 08-44	Adapter, Ammeter
50	532 17 46-51	Switch PTO
58	532 16 94-19	Buzzer CRD
59	532 18 03-79	Switch Full Bagger Indicator
66	817 49 06-08	Screw Thdrol 3/8-16 x 1/2 Ty-Tt
79	532 17 52-42	Socket Asm. Bulb
92	532 19 66-15	Harness Pigtail
93	532 19 25-40	Screw Plastite 10-14 x 2.0
94	532 19 18-34	Module Reverse ROS

NOTE: All component dimensions given in U.S. inches.
1 inch = 25.4 mm.

TRACTOR - - MODEL NO. CTH192 (96061031700), PRODUCT NO. 960 61 03-17
CHASSIS AND ENCLOSURES **39**



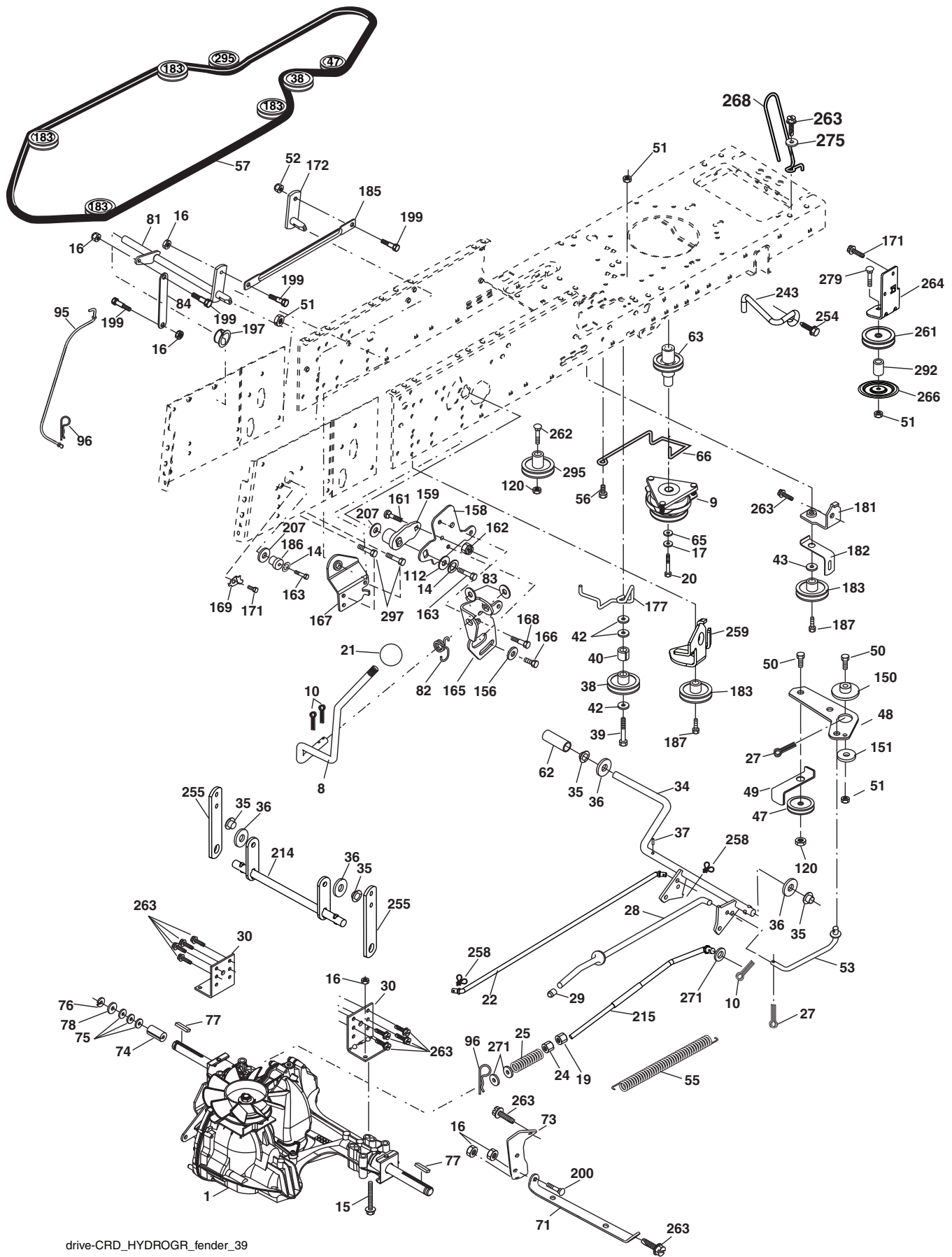
chassis-CRD_TEX LT HUSQ_12_r1

**TRACTOR - - MODEL NO. CTH192 (96061031700), PRODUCT NO. 960 61 03-17
CHASSIS AND ENCLOSURES 39**

KEY NO.	PART NO.	DESCRIPTION	KEY NO.	PART NO.	DESCRIPTION
1	532 17 46-20	Chassis	175	532 18 82-03	Door Trap
2	532 18 03-84	Drawbar	179	532 18 82-02	Rod Pivot FBI CRD
3	817 06 06-12	Screw 3/8-16 x 3/4	184	532 17 46-62	Bracket Actuator Bagger CRD
5	532 40 75-90	Bumper Hood/Dash	185	532 44 14-16	Knob Rod Brake Parking
6	532 18 44-19	Saddle	186	532 16 07-93	Latch Asm Mulch/Bagger
8	532 12 64-71	Clip Insulator 13/32 Mtg. Hole	187	532 12 50-04	Nut Weld
9	532 44 06-03	Dash Upper	188	819 06 12-16	Washer #10
10	872 14 06-10	Bolt, Carriage 3/8-16 x 3/4	189	810 07 10-00	Washer Lock #10
11	532 17 49-96	Panel, Dash, LH	190	871 08 10-10	Screw Pan Hd Phillip 10-24 x 5/8
13	532 17 51-49	Panel, Asm. Dash RH	198	532 16 89-37	Nut, Push
15	874 18 05-12	Screw, Machine, THD 5/16-18 unc x 3/4	205	817 49 06-08	Screw Thdrol 3/8-16 x 1/2
16	873 51 05-00	Nut Keps 5/16-18 unc	207	817 67 05-08	Screw Thdrol 5/16-18 x 1/2
17	532 44 12-67	Hood	208	817 67 06-08	Screw 3/8-16 x 1/2
24	874 78 06-16	Bolt	209	817 00 06-12	Screw Hex Wsh Thdrol 3/8-16
25	819 13 13-12	Washer 13/32 x 13/16 x 12 Ga.	213	532 44 13-45	Skirt Side LH
26	873 80 06-00	Nut	214	532 44 13-44	Skirt Side RH
28	532 42 69-63	Grille/Lens Asm	256	532 18 13-61	Cover Fender Rack
30	532 44 12-65	Fender	258	532 44 14-27	Lens RH
31	532 16 51-56	Bracket, Fender Support	259	532 44 14-28	Lens LH
33	532 18 10-57	Footrest, LH	265	532 18 57-04	Seal RH Side Bagger
34	532 18 10-58	Footrest, RH	266	532 18 57-03	Seal LH Side Bagger
35	872 11 06-06	Bolt	272	532 44 13-42	Vent Hood RH
37	817 49 05-08	Screw Thdrol 5/16-18 x 1/2 TYT	273	532 44 13-43	Vent Hood LH
38	532 18 17-48	Bracket Asm Pivot Mower Rear	278	532 41 63-58	Screw #10 x 0.750
39	532 40 78-07	Bracket Pivot Hood	295	532 44 13-75	Vent Top Hood
58	532 40 75-37	Duct Air	296	532 44 13-74	Trim
64	532 43 93-25	Dash Lower	297	532 19 91-45	Clip Retainer
69	532 14 24-32	Screw Hx Wsh Hi-Lo 1/4-1/2	298	532 11 04-85	Nut Push
89	532 43 91-09	Console Crd Auto Grey	299	532 40 50-12	Logo
131	873 22 06-00	Nut 3/8-16 unc	305	532 40 66-65	Insert Reflective LH
133	872 11 06-08	Bolt 3/8-16 x 1 Gr. 5	306	532 41 65-01	Insert Reflective RH
141	873 90 06-00	Nut	307	532 42 51-25	Shield Chassis Rear
145	532 40 91-67	Rod Pivot Chassis/Hood	321	532 43 03-09	Shield Deck Inner
154	532 40 81-22	Bracket Mounting Dash RH	322	532 43 10-14	Shield Deck Inner
155	532 40 81-23	Bracket Mounting Dash LH	323	532 43 24-00	Assy. CRD LH
161	532 40 47-42	Bumper Extrusion	324	532 43 24-01	Assy. CRD RH
162	532 18 03-82	Bracket Exten Chassis LH CRD	328	532 43 89-71	Control
163	532 18 03-83	Bracket Exten Chassis RH CRD	330	532 44 06-39	Knob
164	532 16 56-05	Support Battery CRD	331	532 40 07-76	Screw
165	532 44 15-16	Cover Battery			
170	532 19 94-88	Backplate CRD			
171	872 14 06-20	Bolt Rdhd Sqnk 3/8-16 x 2-1/2 Gr. 5			
172	819 13 20-16	Washer 13/32 x 1-1/4 x 16 Ga.			
173	873 51 06-00	Nut, Keps Hex 3/8-16 unc			

NOTE: All component dimensions given in U.S. inches.
1 inch = 25.4 mm.

TRACTOR - - MODEL NO. CTH192 (96061031700), PRODUCT NO. 960 61 03-17
DRIVE **40**

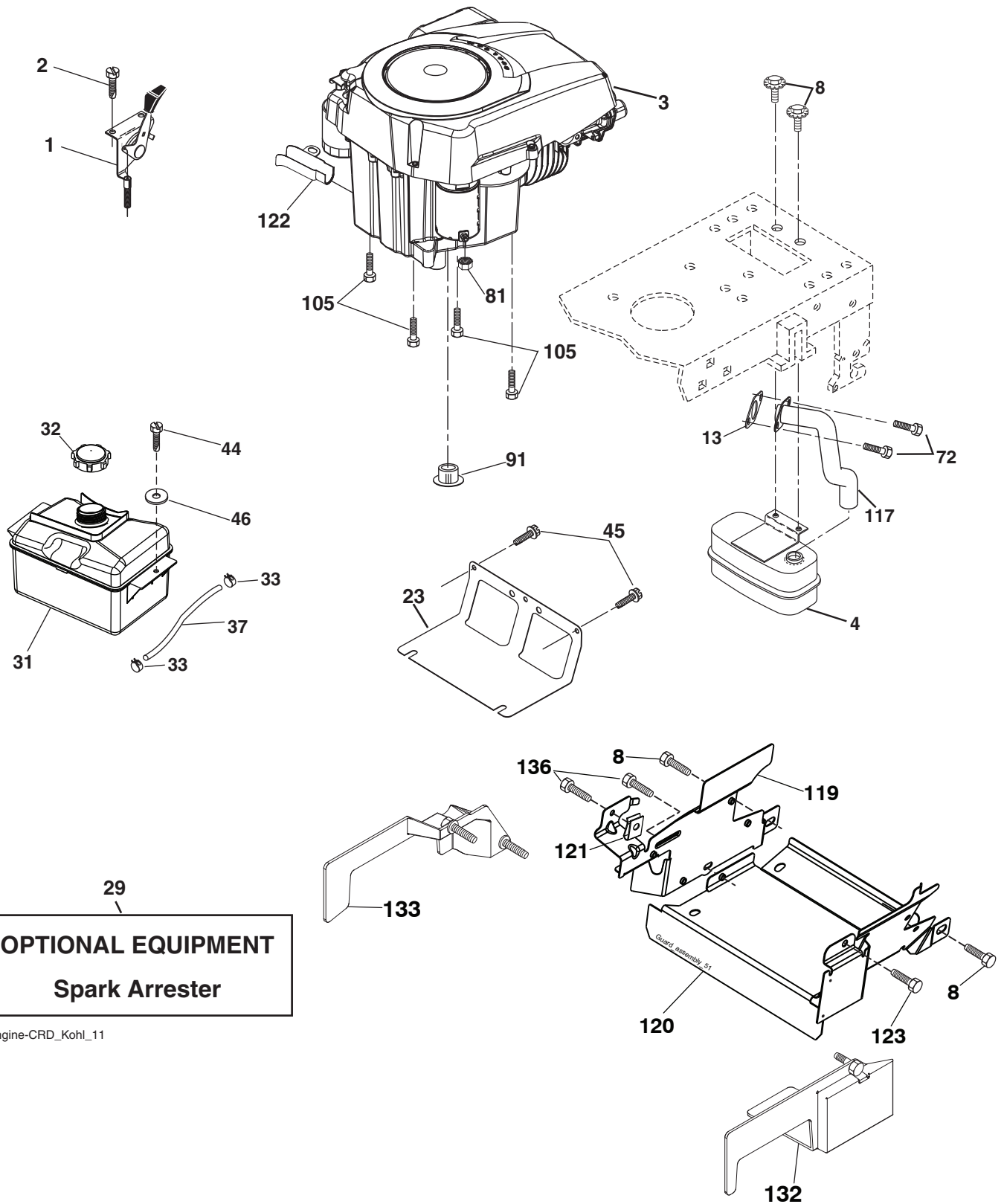


drive-CRD_HYDROGR_fender_39

**TRACTOR - - MODEL NO. CTH192 (96061031700), PRODUCT NO. 960 61 03-17
DRIVE **40****

KEY NO.	PART NO.	DESCRIPTION	KEY NO.	PART NO.	DESCRIPTION
1	---	Transaxle Hydro Gear 321-0510 (Order parts from transaxle manufacturer.)	95	532 17 00-15	Control Asm Bypass Hydro Spring, Retainer 1"
8	532 19 27-06	Rod, Shift Fender Adjust Lt	96	532 12 47-88	Washer 9/32 x 3/4 x 10 Ga.
9	532 19 81-43	Clutch Ele OGURA	112	819 09 12-10	Nut Lock Flg. 3/8-16 unc
10	876 02 04-16	Pin, Cotter 1/8 x 1	120	873 90 06-00	Bushing, Bellcrank Grnd Dr
14	810 04 04-00	Washer, Lock Hvy Helical	150	532 16 58-50	Washer 13/32 x 2 x 10 Ga.
15	874 49 05-44	Bolt Hex FGHD 5/16-18 x Gr. 5	151	819 13 32-10	Washer Srrted 5/16 ID x 1.125
16	873 80 05-00	Nut, Lock Hex w/Ins 5/16-18 unc	156	532 16 60-02	Bracket Shift Mount
17	532 12 61-97	Washer 1-1/2 OD x 15/32 ID x .250	158	532 43 74-58	Hub Tapered Flange Shift Lt
19	873 80 06-00	Nut Lock Hex w/Insert 3/8-16 unc	159	532 18 39-00	Bolt Rdhd Sqnk 1/4-20 x 3/4 Gr. 5
20	532 17 39-37	Bolt, Hex 7/16-20 x 4	161	872 14 04-06	Nut Crownlock 1/4-20 unc
21	532 12 12-74	Knob Deluxe	162	873 68 04-00	Bolt Hex Fin 1/4-20 unc x 1 Gr. 5
22	532 17 56-07	Rod, Brake	163	874 78 04-16	Bracket Pivot Lever
24	873 35 06-00	Nut	165	532 43 82-50	Screw 5/16-18 x 5/8
25	532 19 20-36	Spring, Rod, Brake	166	817 49 05-10	Bracket Support Shift CRD
27	876 02 04-12	Pin, Cotter 1/8 x 3/4	167	532 16 55-88	Bolt Shoulder 5/16-18 x .561
28	532 17 57-65	Rod, Parking Brake	168	532 16 54-92	Plate Fastening Lt
29	532 44 14-96	Cap, Parking Brake	169	532 16 55-80	Screw Thdrol 3/8-16 x 1/2 Ty-Tt
30	532 16 95-92	Bracket, Mfg. Transaxle	171	817 49 06-08	Shaft Asm Shifter Frt CRD
34	532 17 55-78	Shaft, Asm Pedal Foot CRD	172	532 17 02-71	Keeper Flat Idler 3.06" CRD
35	532 12 01-83	Bearing, Nylon	177	532 16 59-32	Bracket Idler Ground Drive CRD
36	819 21 16-16	Washer 21/32 x 1 x 16 Ga.	181	532 18 02-11	Keeper Belt 2.5" Od V-Idler CRD
37	532 12 49-63	Pin, Roll 3/16 x 1"	182	532 18 26-82	Pulley V-Idler CRD
38	532 16 59-36	Pulley Flat Composite 3.06"	183	532 19 95-34	Link Shift
39	874 76 06-44	Bolt Fin Hex 3/8-16 unc x 2-3/4	185	532 17 00-08	Hub Tapered Round CRD
40	532 12 49-65	Spacer, Split 395 x 59 Bzp	186	532 16 56-14	Screw Thdrol 5/16-18 x 1.25
42	819 13 13-12	Washer 13/32 x 13/16 x 12 Ga.	187	817 58 05-20	Nyliner Snap-In 5/8
43	819 11 10-12	Washer 11/32 x 5/8 x 12 Ga.	197	532 16 96-13	Bolt Shoulder 5/16-18 unc
47	532 12 77-83	Pulley, Idler, V Groove Plastic	199	532 16 96-12	Bolt RDHD SQNK 5/16-18 x 1
48	532 15 44-07	Bellcrank Clutch Grnd Drv	200	872 14 05-08	Washer Nylon Rear
49	532 12 32-05	Retainer, Belt Style Spring	207	532 16 98-45	Shaft Asm. Brake
50	872 11 06-12	Bolt Carr. Sh. 3/8-16 x 1-1/2 Gr. 5	214	532 17 56-09	Rod Brake Hydro
51	873 68 06-00	Nut, Crownlock 3/8-16 unc	215	532 17 56-52	Bracket Anti Rotation
52	873 68 05-00	Nut Crownlock 5/16-18	243	532 19 07-36	Screw 3/8-16 x 1
53	532 19 96-52	Link, Clutch 7.66	254	817 00 06-16	Brace Shaft Brake Mtg.
55	532 10 57-09	Spring, Return, Clutch	255	532 17 56-08	Clip Retainer
56	817 06 06-20	Screw 3/8-16 x 1-1/4	258	532 17 80-62	Bracket Pulley
57	532 17 01-40	V-Belt Kev 112" 0650 CRD	259	532 18 02-12	Pulley Idler Flat
62	532 12 48-72	Cover, Pedal	261	532 13 14-94	Bolt Rdhd 3/8-16 unc x 2-3/4 Gr. 5
63	532 18 03-97	Pulley, Engine	262	872 11 06-22	Screw Hx Wsh Thdrol 3/8-16 x 3/4
65	810 04 07-00	Washer Lock 7/16	263	817 00 06-12	Bracket Idler Chassis
66	532 15 47-78	Keeper, Belt Engine F-Proof	264	532 43 11-72	Shield Idler
71	532 16 91-83	Strap, Torque, LH	266	532 18 20-61	Muffler Guard
73	532 16 91-82	Strap, Torque, RH	268	532 18 24-02	Washer 13/32 x 7/8 x 16 Ga.
74	532 13 70-57	Spacer, Split	271	819 13 14-16	Washer 13/32 x 1 x 14 Ga.
75	532 12 17-49	Washer 25/32 x 1-1/4 x 16 Ga.	275	819 13 16-14	Bolt Rdhd Sqnk 3/8-16 unc x 2
76	812 00 00-01	Ring, E	279	872 11 06-16	Spacer Noram
77	532 12 35-83	Key, Square	292	532 40 02-71	Pulley Idler Composite
78	532 12 17-48	Washer 25/32 x 1-5/8 x 16 Ga.	295	532 17 91-14	Screw Hxwsh Thdr 3/8-16 x 5/8
81	532 17 00-06	Asm, Shaft	297	817 49 06-10	
82	532 16 57-11	Spring, Torsion			
83	819 17 12-16	Washer 17/32 x 3/4 x 16 Ga.			
84	532 17 00-07	Link, Transaxle			

NOTE: All component dimensions given in U.S. inches
1 inch = 25.4 mm



OPTIONAL EQUIPMENT
Spark Arrester

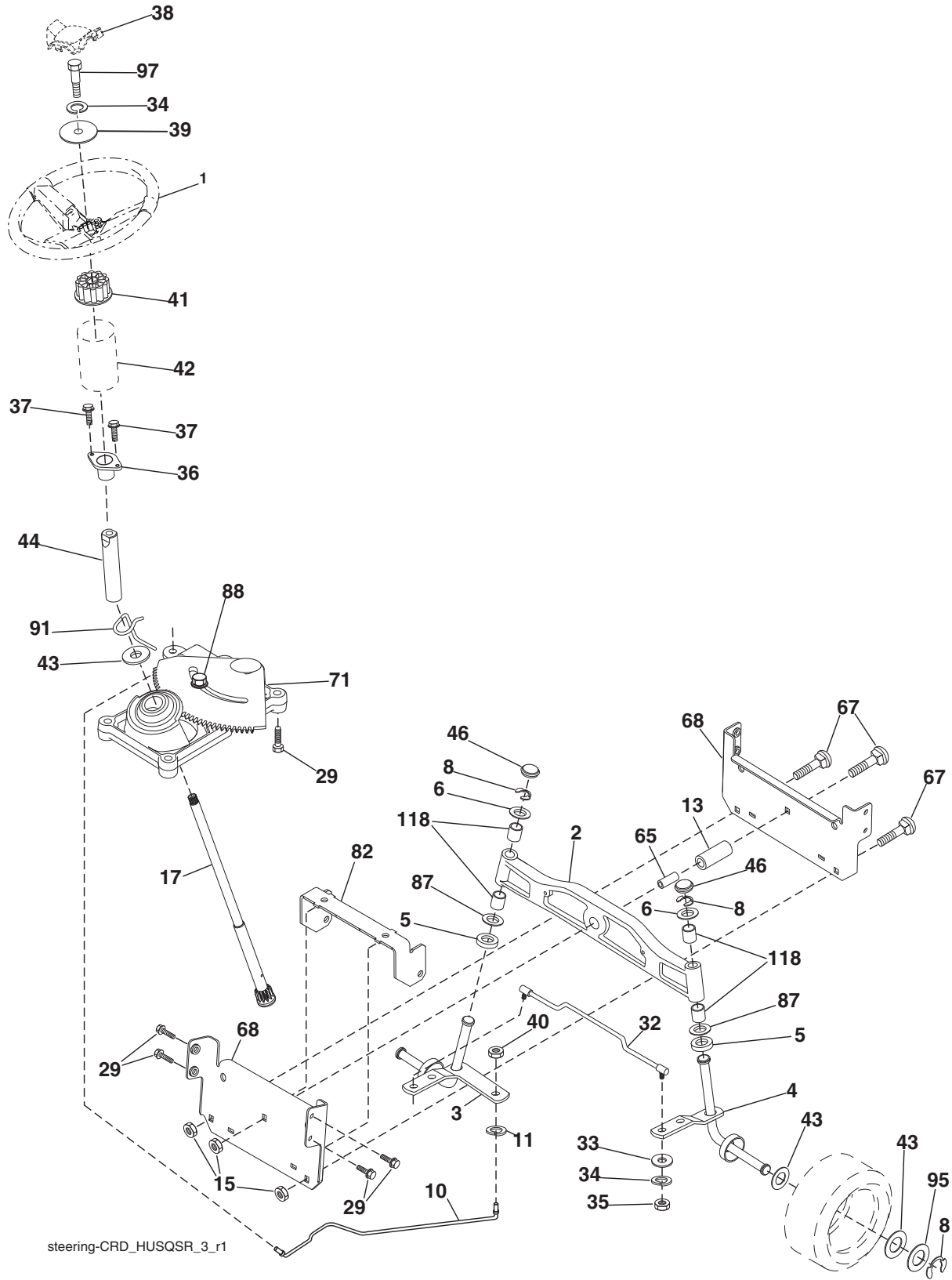
engine-CRD_Kohl_11

**TRACTOR - - MODEL NO. CTH192 (96061031700), PRODUCT NO. 960 61 03-17
ENGINE 24**

KEY NO.	PART NO.	DESCRIPTION
1	532 18 38-97	Control Throt /Cobra
2	532 41 63-58	Screw #10 x 0.750 BOS Thread
3	— — — — —	Engine Kohler SV590-3210 (Order parts from engine manufacturer.)
4	532 18 86-55	Muffler
8	532 17 18-77	Bolt 5/16-18 x 3/4
13	532 18 59-09	Gasket
23	532 16 98-37	Shield Browning/Debris Guard
29	532 13 71-80	Arrestor Spark
31	532 40 75-45	Tank Fuel
32	532 43 02-20	Cap Asm Fuel
33	532 12 34-87	Clamp Hose Blk
37	532 13 70-40	Line Fuel 20"
44	817 67 04-12	Screw Hexwsh Thdrol 1/4-20 x 3/4
45	817 00 06-12	Screw Hexwsh Thdr 3/8-16 x 3/4
46	819 09 14-16	Washer 9/32 x 7/8 x 16 Ga.
72	532 19 23-34	Screw Socket HD 5/16-18 x .75
81	873 51 04-00	Nut Keps 1/4-20 unc
91	532 18 74-95	Bushing 1.375
105	817 12 06-16	Screw 3/8-16 x 1
117	532 18 86-54	Tube Exhaust
119	532 19 97-68	Guard Asm. Engine LH
120	532 19 97-67	Guard Asm. Engine RH
121	532 19 66-88	Clip Threaded
122	532 42 19-22	Extension Drain Oil
123	817 67 05-08	Screw 5/16-18 x 1/2
132	532 42 07-57	Side Shield RH
133	532 42 07-56	Side Shield LH
136	532 13 77-29	Screw 1/4-20 x 5/8

NOTE: All component dimensions given in U.S. inches
1 inch = 25.4 mm

TRACTOR - - MODEL NO. CTH192 (96061031700), PRODUCT NO. 960 61 03-17
 STEERING ASSEMBLY **41**

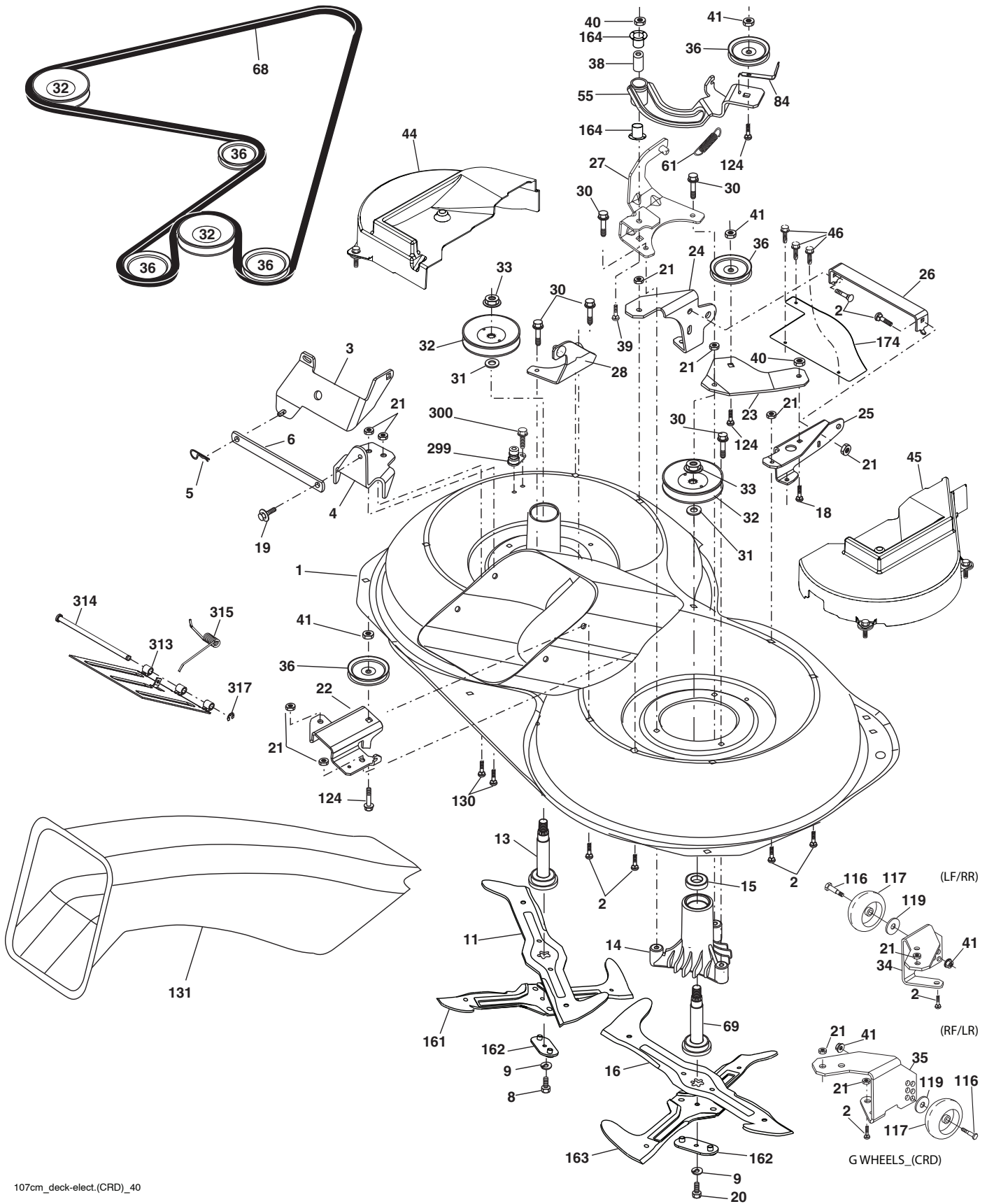


**TRACTOR - - MODEL NO. CTH192 (96061031700), PRODUCT NO. 960 61 03-17
STEERING ASSEMBLY 41**

KEY NO.	PART NO.	DESCRIPTION
1	532 43 97-40	Steering Wheel
2	532 19 35-42	Front Axle Assembly
3	532 16 98-40	Spindle Assembly, LH
4	532 16 98-39	Spindle Assembly, RH
5	532 12 49-31	Bearing, Race, Thrust, Hardened
6	532 12 17-48	Washer 25/32 x 1-5/8 x 16 Ga.
8	812 00 00-29	Ring, Klip
10	532 17 51-21	Link, Drag
11	810 04 06-00	Washer, Lock
13	532 13 65-18	Spacer Axle
15	873 90 06-00	Nut Flange Lock
17	532 19 07-53	Shaft Assembly, Steering
29	817 00 06-12	Screw 3/8-16 x 3/4
32	532 17 18-88	Rod, Tie
33	819 11 12-16	Washer 11/32 x 3/4 x 16 Ga.
34	810 04 05-00	Washer Lock Hvy Hlcl Spr 5/16
35	873 54 05-00	Crownlock Nut 5/16-24 unf
36	532 15 50-99	Bushing, Steering
37	532 15 29-27	Screw TT #10-32 x 5 x 3/8 Flange
38	532 43 97-43	Cap Wheel Steering
39	819 11 38-12	Washer 9/16 ID x 2-3/8 OD 12 Ga.
40	873 54 06-00	Nut Crownlock 3/8-24
41	532 18 67-37	Adaptor, Steering Wheel
42	532 44 14-25	Boot, Steering Dash
43	532 12 17-49	Washer 25/32 x 1-1/4 x 16 Ga.
44	532 19 07-52	Shaft Exten.
46	532 12 12-32	Cap, Spindle
65	532 41 47-36	Spacer Axle
67	872 11 06-18	Bolt Rdhd Sq 3/8-16 x 2-1/4
68	532 16 98-27	Brace Axle
71	532 17 51-46	Steering Asm.
82	532 19 99-78	Bracket Susp. Chassis Front
87	532 17 39-66	Washer Flat .781 x 1-1/2 x .14
88	532 17 51-18	Bolt Shoulder 7/16-20 unc
91	532 17 55-53	Clip Steering
95	532 18 89-67	Washer
97	532 42 89-82	Bolt 5/16-18 x 4
118	532 40 60-13	Bushing

NOTE: All component dimensions given in U.S. inches.
1 inch = 25.4 mm.

TRACTOR - - MODEL NO. CTH192 (96061031700), PRODUCT NO. 960 61 03-17
 MOWER DECK **44**

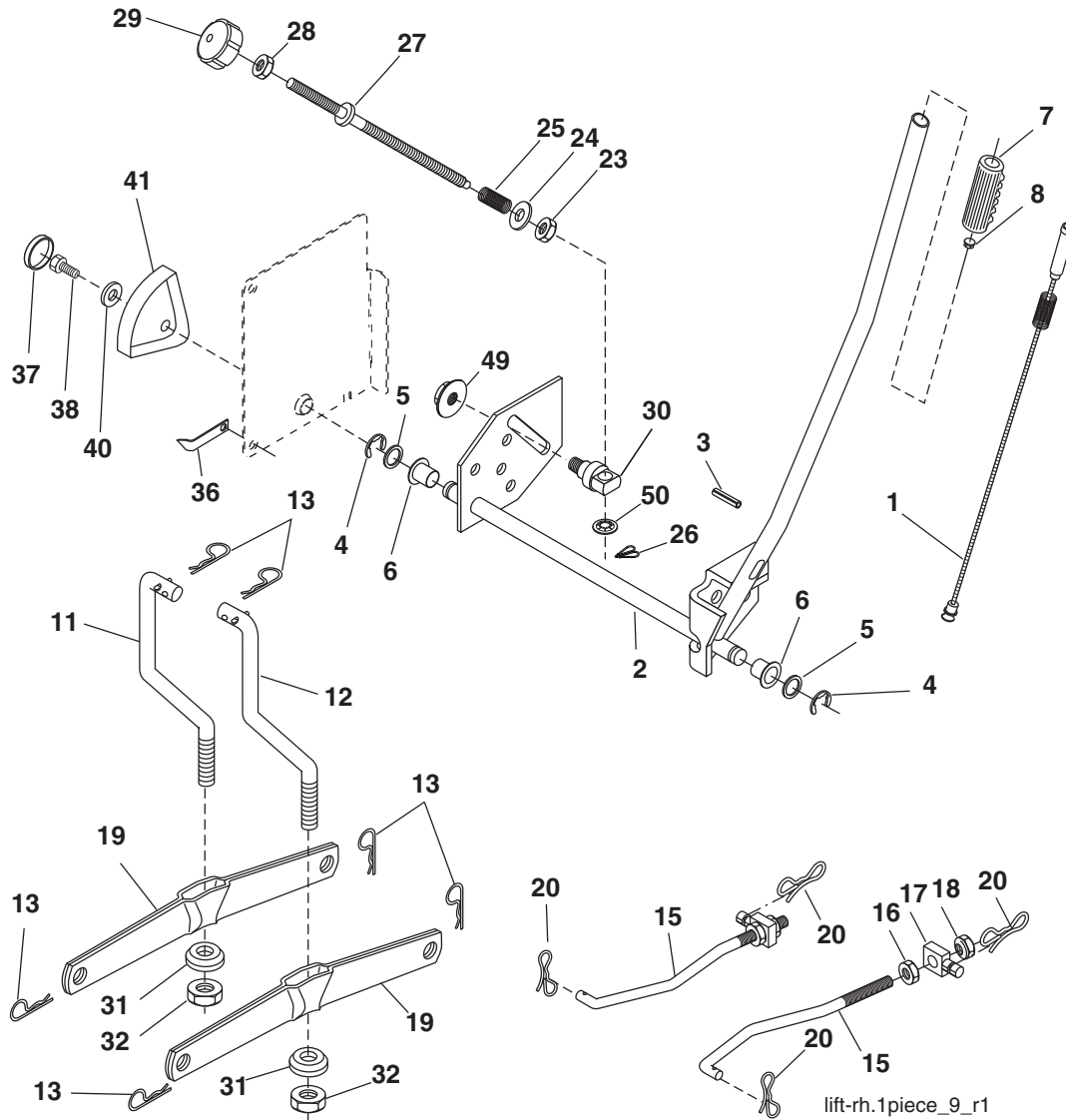


**TRACTOR - - MODEL NO. CTH192 (96061031700), PRODUCT NO. 960 61 03-17
MOWER DECK 44**

KEY NO.	PART NO.	DESCRIPTION	KEY NO.	PART NO.	DESCRIPTION
1	532 44 10-61	Housing Asm. Mower 107 CRD	45	532 43 24-05	Cover Mandrel RH 107 CRD
2	872 14 05-06	Bolt Rdhd Sqnk 5/16-18 unc x 3/4	46	532 13 77-29	Screw Thd Roll 1/4-20 x 5/8
3	532 43 11-75	Bracket Asm. S-Bar Chass 92 CRD	55	532 16 98-49	Arm Idler 107 CRD
4	532 16 91-67	Bracket Bar Sway Deck	61	532 19 94-87	Spring Tension Belt
5	532 12 46-70	Retainer Spring	68	532 40 20-09	Belt Drive
6	532 16 55-57	Bar Sway CRD	69	532 16 54-82	Shaft Asm w/Lwr Brg RH Thd CRD
8	532 18 17-12	Bolt 3/8-24 x 1.25 Gr. 8 Patched	84	532 15 60-85	Keeper Belt Idler
9	810 03 06-00	Washer Lock Hvy 3/8 Unplated	116	532 19 34-06	Bolt Shoulder
11	532 18 05-83	Blade 3-1 LH 107 CRD	117	532 17 48-73	Wheel Gauge Donut Wide
13	532 13 76-45	Shaft Asm. w/Lower Bearing	119	819 13 20-12	Washer 13/32 x 1-1/4 x 12 Ga.
14	532 12 87-74	Housing Mandrel Vented (Machd)	124	872 11 06-12	Bolt Carr Sh 3/8-16 x 1-1/2 Gr. 5
15	532 11 04-85	Bearing Ball Mandrel	130	872 11 05-06	Bolt Rdhdsqnk 5/16-18 unc x 3/4
16	532 18 05-84	Blade 3-1 RH 107 CRD	131	532 43 81-63	Chute Bagger CRD 92cm
18	872 11 06-06	Bolt RdHd Sqnk 3/8-16 x 3/4	161	532 18 04-24	Blade Cross LH 107
19	532 13 28-27	Bolt Shoulder 5/16-18 Thd Form	162	532 18 08-78	Adapter Weldment Blade 107
20	532 18 17-13	Bolt 3/8-24 x 1.25 Gr.8 Ptch Lhthd	163	532 18 04-25	Blade Cross RH 107
21	873 68 05-00	Nut Crown Lock 5/16-18	164	532 12 49-37	Bearing Col. Strg.
22	532 16 91-65	Bracket Idler Sprt RR 107 CRD	174	532 40 02-40	Guard Susp. Front
23	532 16 91-66	Bracket Idler Sprt RF 107 CRD	299	532 41 55-98	Port Washout
24	532 41 34-36	Bracket Suspension LF 107 CRD	300	532 15 29-27	Screw TT #10-32
25	532 40 01-05	Bracket Suspension RF 107 CRD	313	532 43 81-97	Door EZ Mulch
26	532 40 01-10	Brace Support Susp Frt CRD	314	532 43 58-61	Pin Hinge
27	532 16 91-72	Bracket Asm. Susp RR 107 CRD	315	532 43 99-28	Spring
28	532 16 91-68	Bracket Asm. Susp LR 107 CRD	317	532 43 79-88	E Ring
30	532 17 39-84	Screw Thd Rolling Hex	--	532 18 18-57	Mandrel Assembly (Includes housing (key #14), shaft assembly (key #69), and bearing (key #15) only - pulley/nut/washer and blade bolt/washers not included)
31	532 18 76-90	Washer Spacer			
32	532 19 81-45	Mandrel Pulleys			
33	532 40 02-34	Nut Flg Top Lock			
34	532 40 01-03	Bracket Gauge Wheel LF/RR			
35	532 40 01-04	Bracket Gauge Wheel RF/LR	--	532 18 18-58	Mandrel Asm CRD LH Threads SVC
36	532 14 67-63	Pulley Idler V-Groove Dim 4.25	--	532 44 08-28	Replacement Mower Complete
38	532 16 98-51	Spacer Hub Arm Idler 107 CRD			
39	872 11 06-22	Bolt Rdhd 3/8-16 unc x 2-3/4 Gr. 5			
40	873 68 06-00	Nut Crownlock 3/8-16 unc			
41	873 90 06-00	Nut Flangelock 3/8-16 unc			
44	532 43 24-04	Cover Mandrel LH 107 CRD			

NOTE: All component dimensions given in U.S. inches
1 inch = 25.4 mm

TRACTOR - - MODEL NO. CTH192 (96061031700), PRODUCT NO. 960 61 03-17
MOWER LIFT **45**

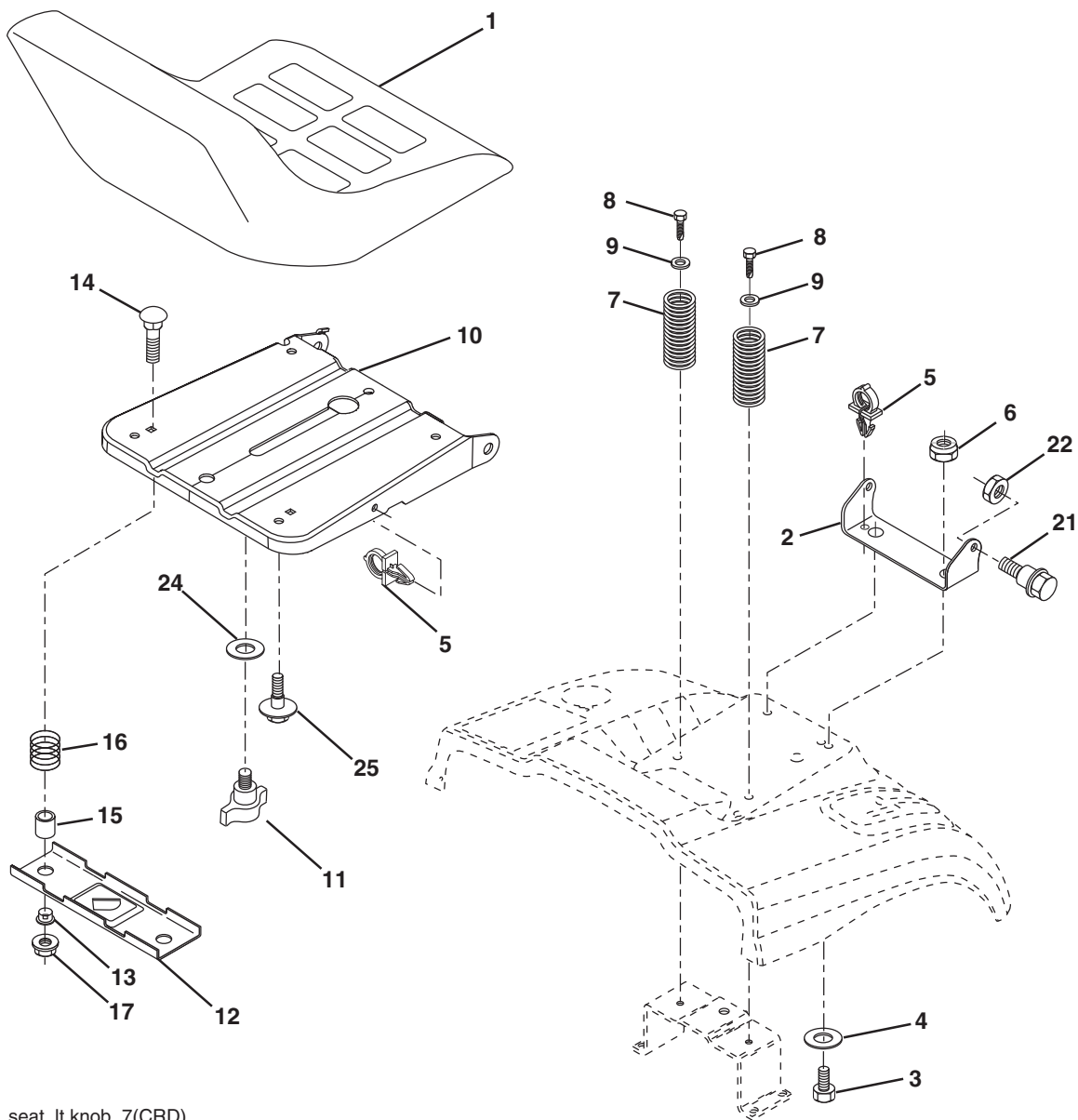


KEY NO.	PART NO.	DESCRIPTION
1	532 40 49-81	Plunger Asm. Lift
2	532 15 94-71	Shaft Asm. Lift
3	532 10 57-67	Pin Groove
4	812 00 00-02	E Ring #5133-62
5	819 21 16-21	Washer 21/32 x 1 x 21 Ga.
6	532 12 01-83	Bearing Nylon
7	532 12 56-31	Grip Handle Fluted
8	532 12 23-65	Button Plunger Black
11	532 16 58-29	Link Asm Lift LH
12	532 16 58-31	Link Asm Lift RH
13	532 12 46-70	Retainer Spring
15	532 17 32-88	Link Front
16	873 35 08-00	Nut Jam Hex 1/2-13 unc
17	532 17 56-89	Trunnion Blk Zinc
18	873 80 08-00	Nut Lock w/Wsh 1/2-13 unc
19	532 13 98-68	Arm Suspension Mower
20	532 19 42-09	Pin Cotter 7/16 Bow Tie Lock
23	532 11 08-07	Nut Special
24	819 13 10-16	Washer 13/32 x 5/8 x 16 Ga.

KEY NO.	PART NO.	DESCRIPTION
25	532 16 40-24	Spring Compression
26	532 16 94-84	Retainer Clip
27	532 16 45-43	Rod Adj Lift
28	873 35 06-00	Nut Hex Jam 3/8-16 unc
29	532 13 80-57	Knob
30	532 15 02-33	Trunnion Infin Height
31	532 16 98-65	Bearing, Pvt. Lift.
32	873 54 06-00	Nut Crownlock 3/8-24
36	532 15 50-97	Pointer Height Indicator
37	532 12 39-35	Plug Hole Blk 1.485/1.515 Dia
38	817 06 05-16	Screw 5/16-18 x 1
40	819 11 24-10	Washer 11/32 x 1-1/2 x 10 Ga.
41	532 12 39-34	Scale Ind Height Blk
49	532 40 91-49	Nut Hex Flange
50	532 11 04-52	Nut Push

NOTE: All component dimensions given in U.S. inches
1 inch = 25.4 mm

**TRACTOR - - MODEL NO. CTH192 (96061031700), PRODUCT NO. 960 61 03-17
SEAT ASSEMBLY 42**



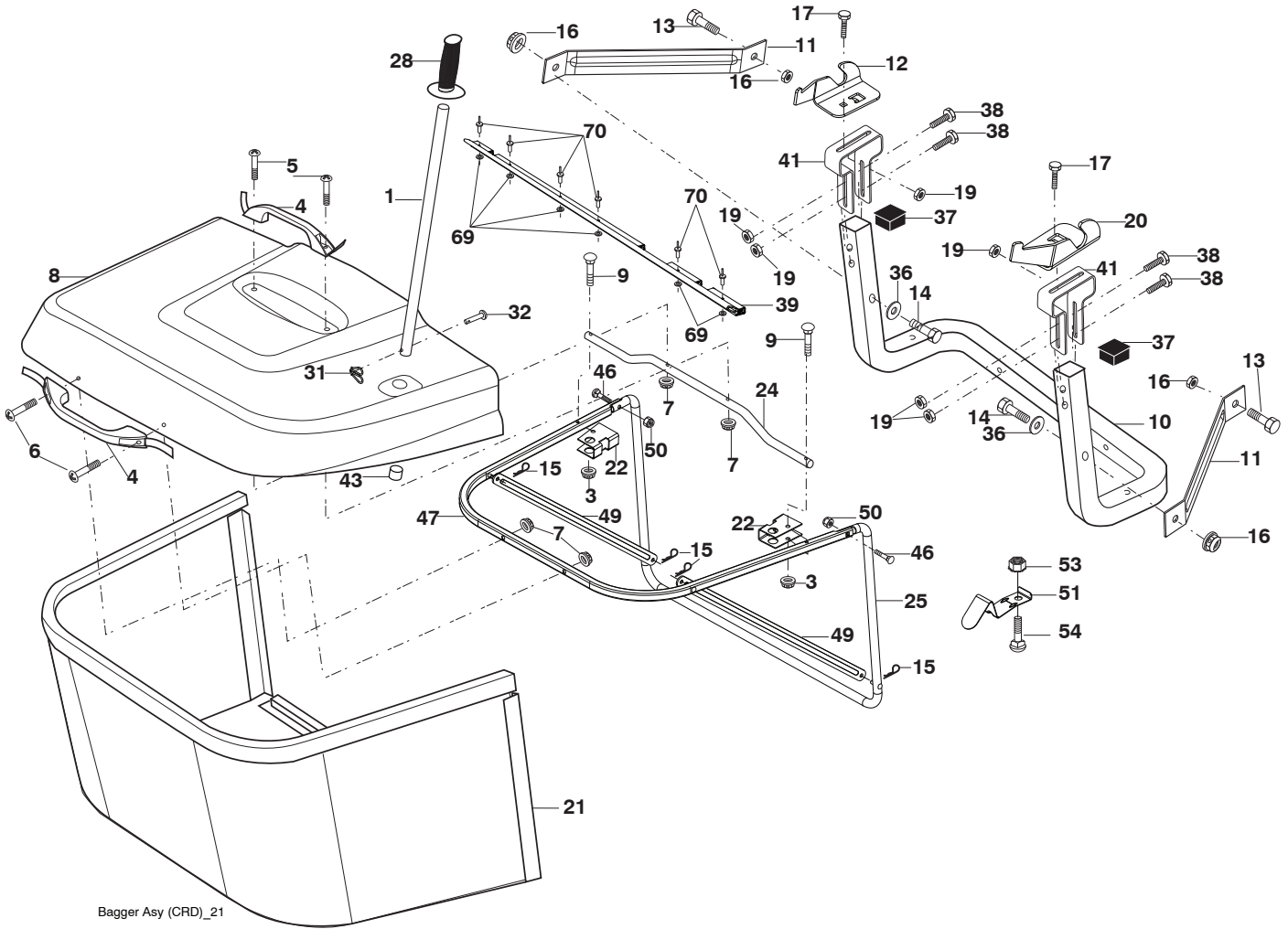
seat_lt.knob_7(CRD)

KEY NO.	PART NO.	DESCRIPTION
1	532 43 97 00	Seat
2	532 14 05-51	Bracket Pnt Pivot Seat (Blk)
3	871 11 06-16	Bolt Fin Hex 3/8-16 unc x 1
4	819 13 16-10	Washer Flat 13/32 x 1 x 10 Ga.
5	532 14 50-06	Clip Push In Hinged
6	873 80 06-00	Nut Lock Hex 3/8-16 unc
7	532 12 41-81	Spring Seat Cprsn 2 250 Blk Zi
8	817 00 06-16	Screw 3/8-16 x 1-1/2
9	819 13 16-14	Washer 13/32 x 1 x 14 Ga.
10	532 19 55-30	Pan Pnt Seat (Blk)
11	532 16 63-69	Knob Seat
12	532 17 46-48	Bracket Pnt Mounting Switch

KEY NO.	PART NO.	DESCRIPTION
13	532 12 12-48	Bushing Snap Blk Nyl 50 Id
14	872 05 04-12	Bolt Rdhd Sht Nk 1/4-20 x 1-1/2
15	532 12 12-49	Spacer Split
16	532 12 37-40	Spring Cprsn
17	532 12 39-76	Nut Lock 1/4 Lge Flg Gr. 5 Zinc
21	532 17 18-52	Bolt Shoulder 5/16-18 unc-2A
22	873 80 05-00	Nut Hex Lock w/Ins 5/16-18
24	819 17 19-12	Washer 17/32 x 1-3/16 x 12 Ga.
25	532 12 70-18	Bolt Shoulder 5/16-18 x .62

NOTE: All component dimensions given in U.S. inches.
1 inch = 25.4 mm

TRACTOR - - MODEL NO. CTH192 (96061031700), PRODUCT NO. 960 61 03-17
 BAGGER **46**



Bagger Asy (CRD)_21

**TRACTOR - - MODEL NO. CTH192 (96061031700), PRODUCT NO. 960 61 03-17
BAGGER 46**

KEY NO.	PART NO.	DESCRIPTION
1	532 42 86-10	Tube Handle
3	532 12 39-76	Nut Lock 1/4 Lge Flg Gr. 5 Zinc
4	532 16 99-16	Handle Bagger w/Lvrs Blk CRD
5	874 98 10-24	Screw Pan Head #10-24 x 1.50 Blk
6	874 98 10-32	Screw Pan Hd
7	873 40 10-00	Nut Wiz Lock Hex Serr/Hd 10-24
8	532 44 15-43	Cover Bagger
9	872 14 04-18	Bolt Carriage 1/4-20 x 2.25d x Gr. 5
10	532 18 12-82	Tube Support Bagger CRD
11	532 16 57-19	Bracket Support Upper Bag CRD
12	532 18 88-48	Bracket Pivot LH
13	874 76 06-12	Bolt Fin Hex 3/8-16 unc x 3/4
14	874 52 06-36	Bolt Fin Hex 3/8-16 x 2-1/4 Gr. 5
15	532 12 46-70	Retainer Spring
16	873 90 06-00	Nut Lock Flg 3/8-16 unc
17	872 14 05-06	Bolt Rdhd Sht Sqnk 5/16 -18 unc x 3/4
19	873 90 05-00	Nut Lock Hex Flange 5/16-18
20	532 18 88-47	Bracket Pivot RH
21	532 40 61-80	Bag Asm CRD
22	532 42 82-36	Bracket Side Bagger CRD
24	532 16 57-83	Tube Pivot Bagger CRD
25	532 19 37-05	Tube Front Bagger CRD
28	532 16 57-87	Handle Grip
31	532 16 94-84	Retainer Clip
32	532 12 68-75	Rivet
36	819 13 20-12	Washer 13/32 x 1-1/4 x 12 Ga.
37	532 17 54-01	Plug Support Bagger CRD
38	872 01 05-20	Bolt 5/16-18 x 2-1/2
39	532 41 62-57	Seal Trim
41	532 43 27-55	Bracket Bagger SD Elect.
43	532 17 40-83	Cup Plug
46	872 11 05-10	Bolt 5/16-18 x 1-1/4
47	532 19 37-04	Tube Upper Bagger
49	532 19 33-05	Bar Spreader Bagger
50	873 80 05-00	Nut Lock Hx w/Ins. 5/16-18 unc
51	532 19 99-03	Latch Spring Bagger
53	873 51 04-00	Nut Keps Hex 1/4-20 unc
54	872 14 04-06	Bolt Rdhd Sqnk 1/4-20 x 3/4 Gr. 5
69	532 43 56-11	Washer
70	532 43 56-03	Rivet Pop

NOTE: All component dimensions given in U.S. inches
1 inch = 25.4 mm

