

**532 44 63-86 Rev 1**



# **Repair Parts Manual IPL Manual**

**LGT24K54 / 240471**

Please read the operator's manual carefully and make sure you understand the instructions before using the machine.

Por favor lea cuidadosamente y comprenda estas instrucciones antes de usar esta maquina.



**English/**

# HOW TO USE THIS MANUAL

This manual is designed to provide the customer with a means to identify the parts on his/her tractor when ordering repair parts. The illustrations may or may not represent the actual assemblies; therefore, it is not recommended to use this manual as a guide to assemble or disassemble the tractor. Some hardware and parts are drawn larger in order to more readily identify them.

Each tractor has its own model number.

The model number for your tractor can be found on the fender under the seat.

When ordering parts, always give the following information:

- Product - "TRACTOR"
- MODEL NUMBER - "LGT24K54" (240471)"
- Part Number
- Part Description

## TABLE OF CONTENTS

SCHEMATIC .....	3
ELECTRICAL.....	4-5
CHASSIS .....	6-7
DRIVE.....	8-9
ENGINE.....	10-11
STEERING .....	12-13
MOWER DECK.....	14-15
MOWER LIFT.....	16
SEAT .....	17
DECALS.....	18
TRANSAXLE.....	19
ENGINE.....	20-24

## COMO UTILIZAR ESTE MANUAL

Este manual está diseñado para brindarle al comprador un medio para identificar las piezas del tractor para cuando necesite hacer el pedido de un repuesto. Las ilustraciones pueden o no representar los ensambles reales; por lo tanto, no se recomienda utilizar este manual como una guía para ensamblar o desarmar el tractor. Algunos accesorios y piezas están dibujados en tamaños más grandes para identificarlos con mayor facilidad.

Cada tractor tiene su propio número de modelo.

El número de modelo del tractor se encuentra en el guardabarros debajo del asiento.

Cuando haga el pedido de una pieza, siempre brinde la siguiente información:

- Producto: "TRACTOR"
- NÚMERO DE MODELO: "LGT24K54" (240471)"
- Número de pieza
- Descripción de la pieza

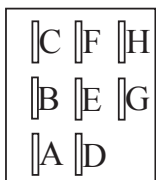
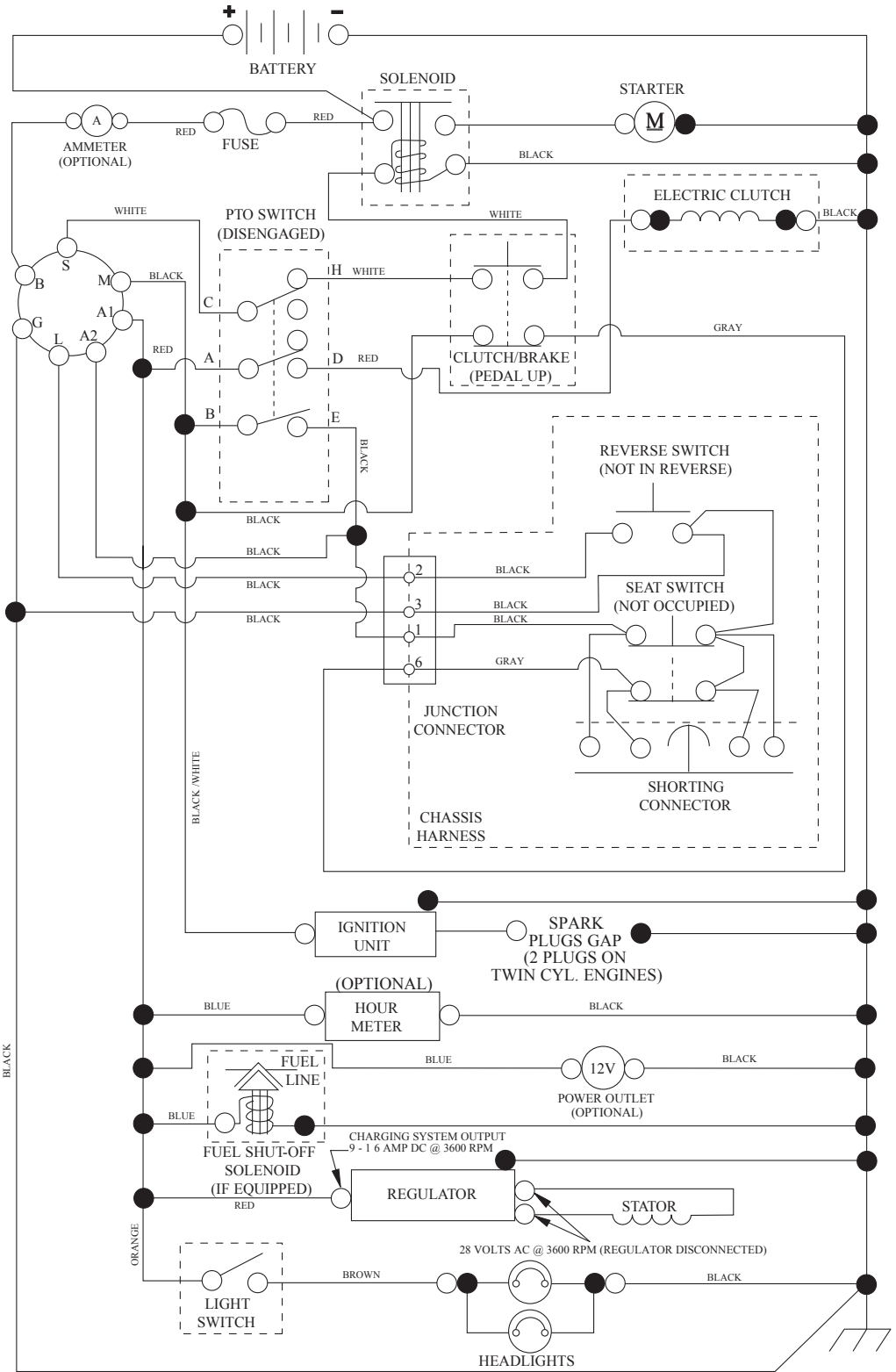
## ÍNDICE

DIAGRAMA.....	25
DIAGRAMA ELÉCTRICO .....	26-27
CHASIS .....	28-29
TRANSMISIÓN .....	30-31
MOTOR .....	32-33
DIRECCIÓN .....	34-35
PLATAFORMA DE LA CORTADORA DE CÉSPED.....	36-37
ELEVACIÓN DE LA CORTADORA DE CÉSPED.....	38
ASIENTO.....	39
CALCOMANÍAS.....	40
TRANSMISIÓN DESCOMPOSTURA.....	41
MOTOR DESCOMPOSTURA.....	42-46

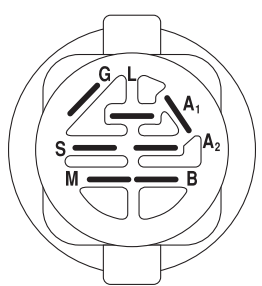
# TRACTOR - MODEL NO. (917.240471), PRODUCT NO. LGT24K54

## SCHEMATIC

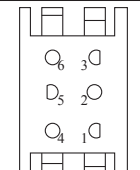
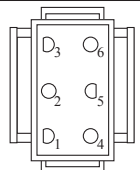
SCH12



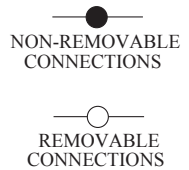
PTO SWITCH (MATING SIDE)



POSITION	CIRCUIT	"MAKE"
OFF	M+G+A1	
RUN/OVERRIDE	B+A1	
RUN	B+A1	L+A2
START	B + S + A1	

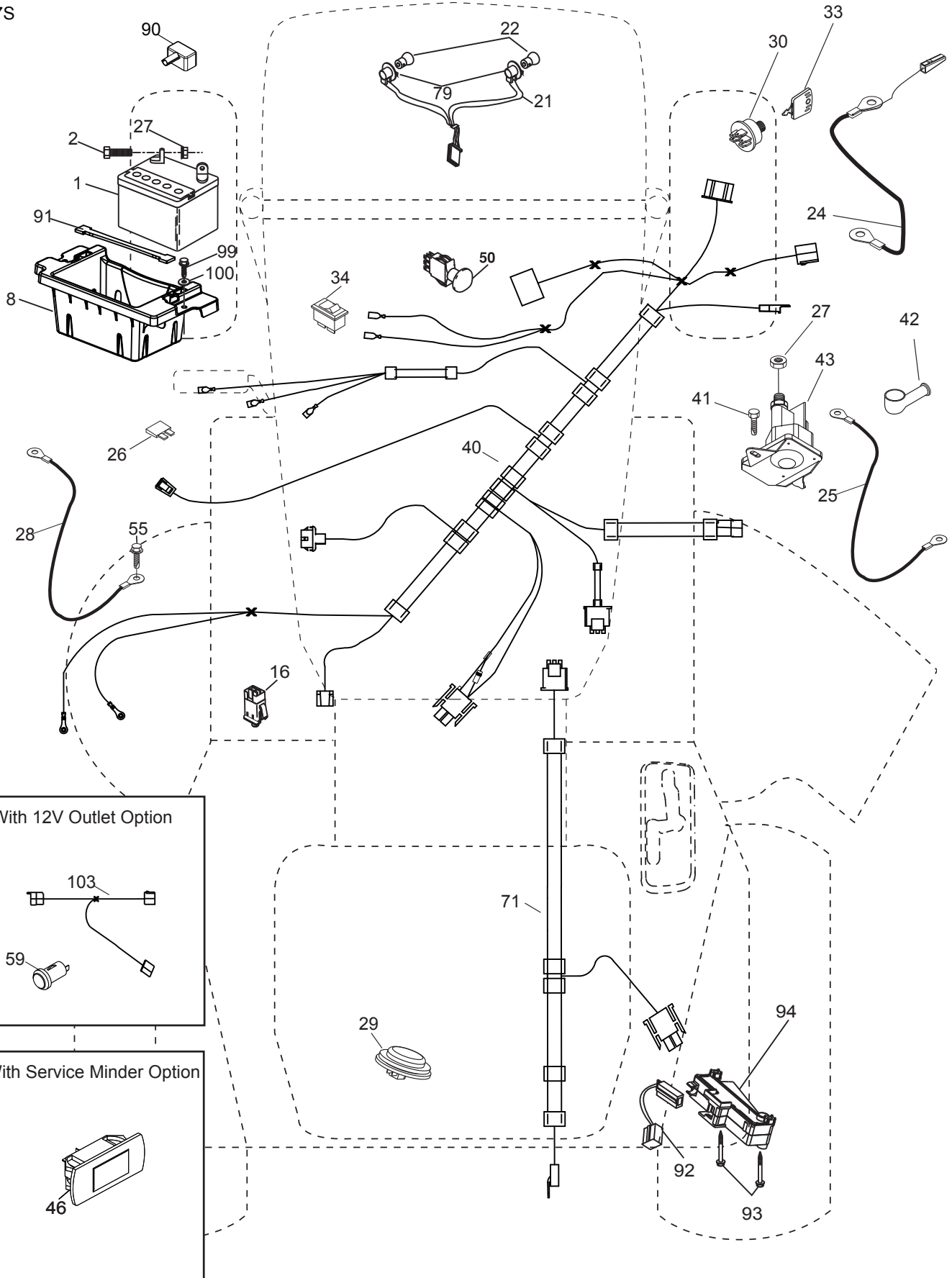


WIRING INSULATED CLIPS  
NOTE: IF WIRING INSULATED CLIPS WERE REMOVED FOR SERVICING OF UNIT, THEY SHOULD BE RE-INSTALLED TO PROPERLY SECURE YOUR WIRING.

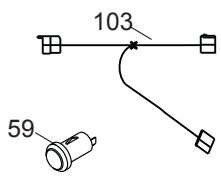


**TRACTOR - MODEL NO. (917.240471), PRODUCT NO. LGT24K54**  
**ELECTRICAL**

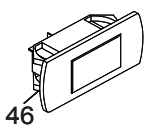
T07S



With 12V Outlet Option



With Service Minder Option

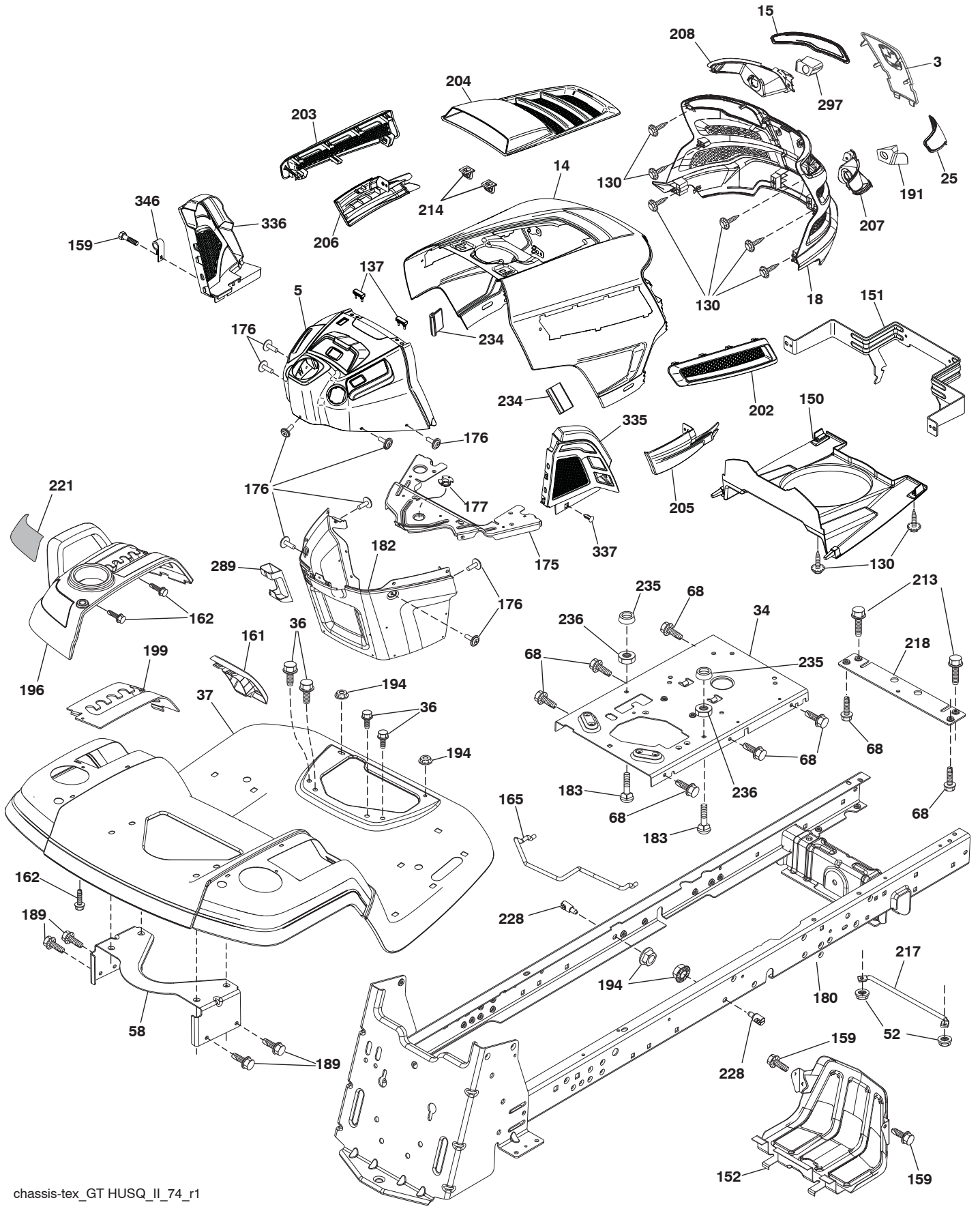


**TRACTOR - MODEL NO. (917.240471), PRODUCT NO. LGT24K54**  
**ELECTRICAL**

<b>KEY NO.</b>	<b>PART NO.</b>	<b>DESCRIPTION</b>
1	532 16 34-65	Battery
2	874 76 04-12	Bolt Hex Hd 1/4-20 unc x 3/4
8	532 18 64-91	Battery Box
16	532 17 61-38	Switch Interlock
21	532 40 02-52	Harness Socket Light
22	532 00 41-52	Bulb, Light # 1156
24	532 40 02-53	Cable Battery
25	532 41 28-95	Cable Starter
26	532 17 51-58	Fuse
27	873 51 04-00	Nut Keps Hex 1/4-20 unc
28	532 14 54-91	Cable Ground 21" Blk 6 Ga.
29	532 40 15-45	Switch Seat
30	532 19 33-50	Switch Ign
33	532 41 19-33	Key/Chain
34	532 11 07-12	Switch Light/Reset
40	532 40 11-04	Harness Ign. Dash
41	817 72 04-08	Screw Thd Cut 1/4-20 x 1/2
42	532 13 15-63	Cover Terminal Red
43	532 19 25-07	Solenoid
46	532 40 17-63	Gauge Hourmeter
50	532 17 46-51	Switch PTO
55	817 06 05-12	Screw Thdrol 5/16-18 x 3/4
59	532 40 03-03	Outlet 12-Volt
71	532 19 42-76	Harness Ign Chassis
79	532 17 52-42	Socket Asm Bulb Twistlock
90	532 43 53-95	Cover Terminal Battery
91	532 19 02-70	Strap Battery
92	532 19 66-15	Harness Pigtail Console ROS
93	532 19 25-40	Screw Plastite 10-14 x 2.0
94	532 19 18-34	Module Reverse ROS
99	817 67 04-12	Screw Hexwsh Thdrol 1/4-20 x 3/4
100	819 09 14-16	Washer 9/32 x 7/8 x 16 Ga.
103	532 40 79-62	Harness Pigtail 12V Outlet

**NOTE:** All component dimensions given in U.S. inches  
1 inch = 25.4 mm

**TRACTOR - MODEL NO. (917.240471), PRODUCT NO. LGT24K54**  
**CHASSIS**



# TRACTOR - MODEL NO. (917.240471), PRODUCT NO. LGT24K54

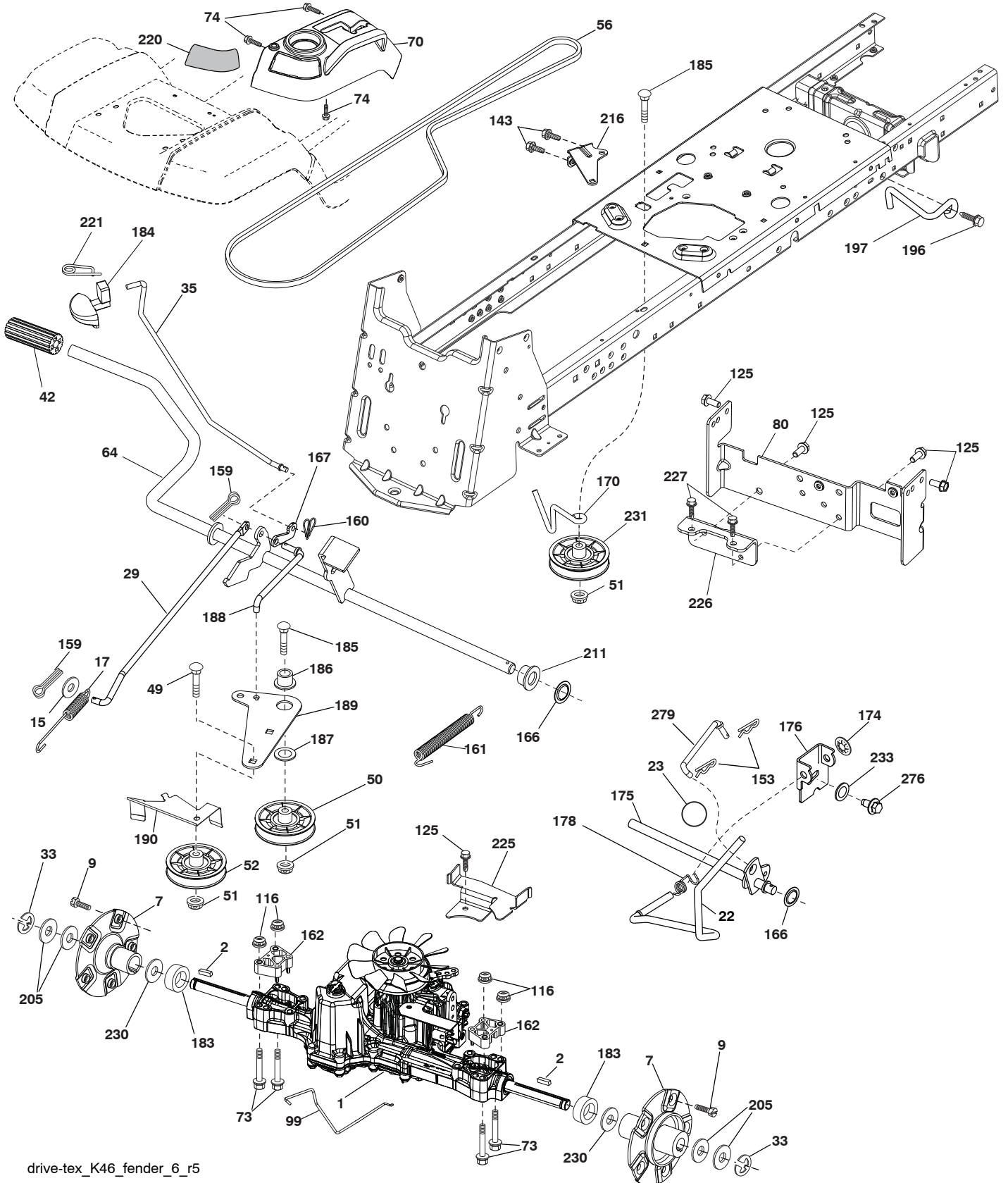
## CHASSIS

KEY NO.	PART NO.	DESCRIPTION	KEY NO.	PART NO.	DESCRIPTION
3	532 43 97-52	Applique	194	873 90 05-00	Nut Lock 5/16-18
5	532 43 74-72	Dash	196	532 43 97-16	Console Asm. Deck Lift
14	532 44 11-77	Hood	199	532 43 97-16	Plate Deck Lift
15	532 43 97-33	Lens LH	202	532 43 97-28	Vent Side Hood RH
18	532 43 77-62	Grille	203	532 43 97-27	Vent Side Hood LH
25	532 44 33-85	Lens RH	204	532 43 57-14	Vent Asm Hood Top
34	532 19 61-25	Plate Engine	205	532 43 97-30	Skirt Hood Side RH
36	817 06 05-12	Screw 5/16-18 x 3/4	206	532 43 97-29	Skirt Hood Side LH
37	532 44 12-08	Fender	207	532 43 97-34	Bezel RH
52	873 68-05-00	Nut Crown Lock 5/16-18	208	532 43 97-35	Bezel LH
58	532 19 43-14	Bracket Fender	213	874 76 05-12	Bolt Hex Hd 5/16-18 unc x 3/4
68	817 49 05-08	Screw 5/16-18 x 1/2	214	532 19 91-45	Clip Retainer
130	532 41 63-58	Screw #10 x 0.750 BOS Thread	217	532 40 91-67	Rod Pivot
137	532 40 75-90	Bumper Dash	218	532 19 63-95	Hood Stop X Piece
150	532 43 97-74	Duct Heat Hood	221	532 19 89-09	Reflector LH
151	532 43 66-70	Bracket Pivot	228	532 19 51-61	Stud Fastener
152	532 43 98-70	Shield Browning/Debris	234	532 40 47-42	Bumper Hood
159	817 00 06-12	Screw 3/8-16 x 3/4	235	532 40 61-29	Spacer Fender
161	532 43 99-29	Console Fuel Window	236	873 93 05-00	Nut Center Lock 5/16-18 unc
162	532 14 24-32	Screw Hex Wsh Hi-Lo 1/4 x 1/2	289	532 40 35-71	Plug Cruise/Phone
165	532 19 68-26	Bracket Support Tank	297	532 43 74-56	Insert Reflective LH
175	532 19 63-04	Crossmember	335	532 43 98-47	Cover Lower Dash RH
176	532 40 07-76	Screw 10-24 x 5/8 Wshd Qdrx	336	532 44 53-09	Cover Lower Dash LH
177	532 19 52-27	Bushing Steering	337	532 43 81-37	Clip
180	532 19 54-77	Chassis	346	532 12 64-71	Clip Insulator
182	532 40 68-59	Dash Lower	--	532 40 09-44	Kit Bumper
183	874 52 05-20	Bolt 5/16-18 x 1-1/4			
189	817 00 05-12	Screw 5/16-18 x 3/4			
191	532 43 74-55	Insert Reflective RH			

**NOTE:** All component dimensions given in U.S. inches  
1 inch = 25.4 mm

# TRACTOR - MODEL NO. (917.240471), PRODUCT NO. LGT24K54

## DRIVE



drive-tex\_K46\_fender\_6\_r5



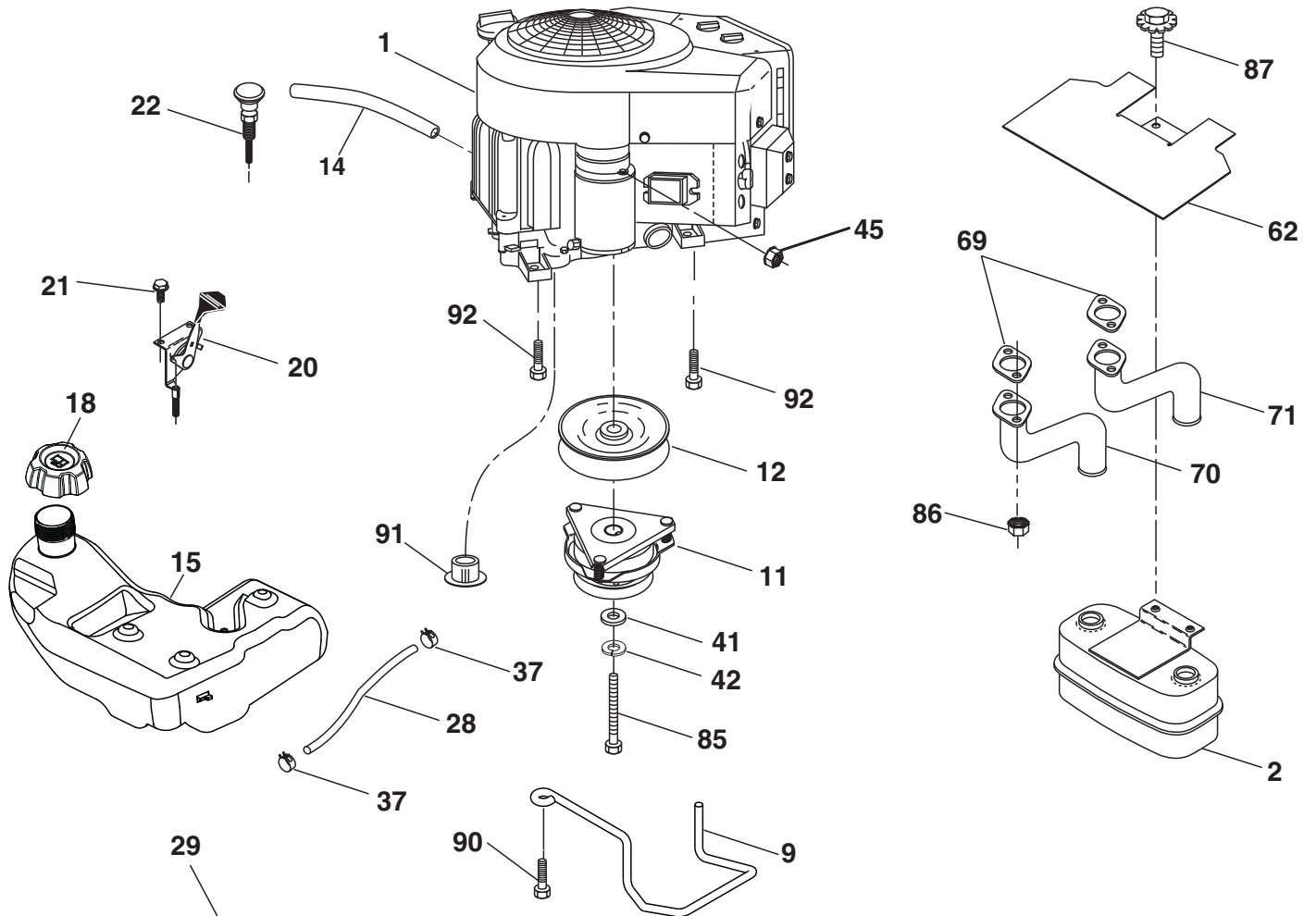
# TRACTOR - MODEL NO. (917.240471), PRODUCT NO. LGT24K54

## DRIVE

KEY NO.	PART NO.	DESCRIPTION	KEY NO.	PART NO.	DESCRIPTION
1	— — — — —	Transaxle, TUFFTORQ K46AW (406206) (See transaxle breakdown.)	167	532 40 52-57	Latch Brake Parking
2	532 18 62-11	Key	170	532 41 34-30	Keeper Belt Centerspan
7	532 19 98-44	Hub Asm. Wheel Rear 22" TXGT .06	174	532 19 72-89	Nut Push
9	532 14 00-80	Bolt Hub Wheel Rear	175	532 40 62-08	Shaft Asm Shift
15	819 13 13-16	Washer 13/32 x 13/16 x 16 Ga.	176	532 19 62-14	Arm Clevis Rod Shift
17	532 41 36-78	Spring Brake	178	532 19 74-56	Spring Shift
22	532 19 73-29	Rod Shift	183	532 40 04-24	Spacer Split
23	532 14 08-45	Knob	184	532 44 14-55	Handle Parking Brake
29	532 40 38-06	Rod, Brake	185	872 11 06-22	Bolt Rdhd Sqnk 3/8-16 x 2-3/4 Gr. 5
33	812 00 00-01	Ring E	186	532 19 43-21	Spacer Retainer
35	532 43 54-86	Rod Brake Park	187	819 13 32-10	Washer
42	532 12 48-72	Cover Foot Pedal	188	532 19 43-23	Link Clutch Ground Drive
49	872 11 06-14	Bolt	189	532 19 43-17	Bellcrank Ground Drive
50	532 19 43-27	Pulley Idler Flat	190	532 19 43-18	Keeper Bellcrank Ground Drive
51	873 90 06-00	Lock Nut 3/8-16	196	817 00 06-16	Screw 3/8-16 x 1
52	532 19 43-26	Idler V-Groove 910" Offset	197	532 19 97-69	Link Clutch Anti-Rotation
56	532 13 09-69	V-Belt Drive	205	532 12 17-48	Washer
64	532 19 62-00	Shaft Asm. Pedal Brake Control	211	532 19 62-12	Bushing Brake Shaft
70	532 43 96-60	Console Asm.	216	532 19 61-31	Bracket Pulley Idler
73	874 49 05-60	Bolt Hex Flghd 5/16-18 x 3.75	220	532 19 89-08	Reflector RH
74	532 14 24-32	Screw 1/4 x 1/2	221	532 40 31-87	Retainer Spring Clip Handle
80	532 44 06-19	Strap Torque	225	532 40 33-19	Keeper Belt Trans.
99	532 41 57-43	Rod Bypass	226	532 40 08-31	Bracket Mount Torque
116	873 90 05-00	Nut Lock Hex Flange 5/16-18	227	817 49 05-12	Screw Thdrol. 5/16-18 x 3/4
125	817 00 05-12	Screw 5/16-18 x 3/4	230	532 18 89-67	Washer Hardened
143	817 49 05-08	Screw 5/16-18 x 1/2	231	532 40 72-87	Idler V-Groove 1.688" Offset
153	532 12 47-88	Retainer Spring	233	532 40 52-96	Washer Serrated
159	876 02 04-12	Pin Cotter 1/8 x 3/4	276	874 78 07-16	Bolt 7/16-14 x 1 Gr. 5
160	532 16 94-84	Retainer Clip	279	532 40 62-07	Link Shift
161	532 10 57-09	Spring Return Clutch			
162	532 19 57-85	Spacer Transaxle 18 and 22			
166	532 42 91-64	Nut Push			

**NOTE:** All component dimensions given in U.S. inches  
1 inch = 25.4 mm

**TRACTOR - MODEL NO. (917.240471), PRODUCT NO. LGT24K54**  
**ENGINE**



**SPARK ARRESTER KIT**

engine-tex\_Kawa-2cyl\_7

# TRACTOR - MODEL NO. (917.240471), PRODUCT NO. LGT24K54

## ENGINE

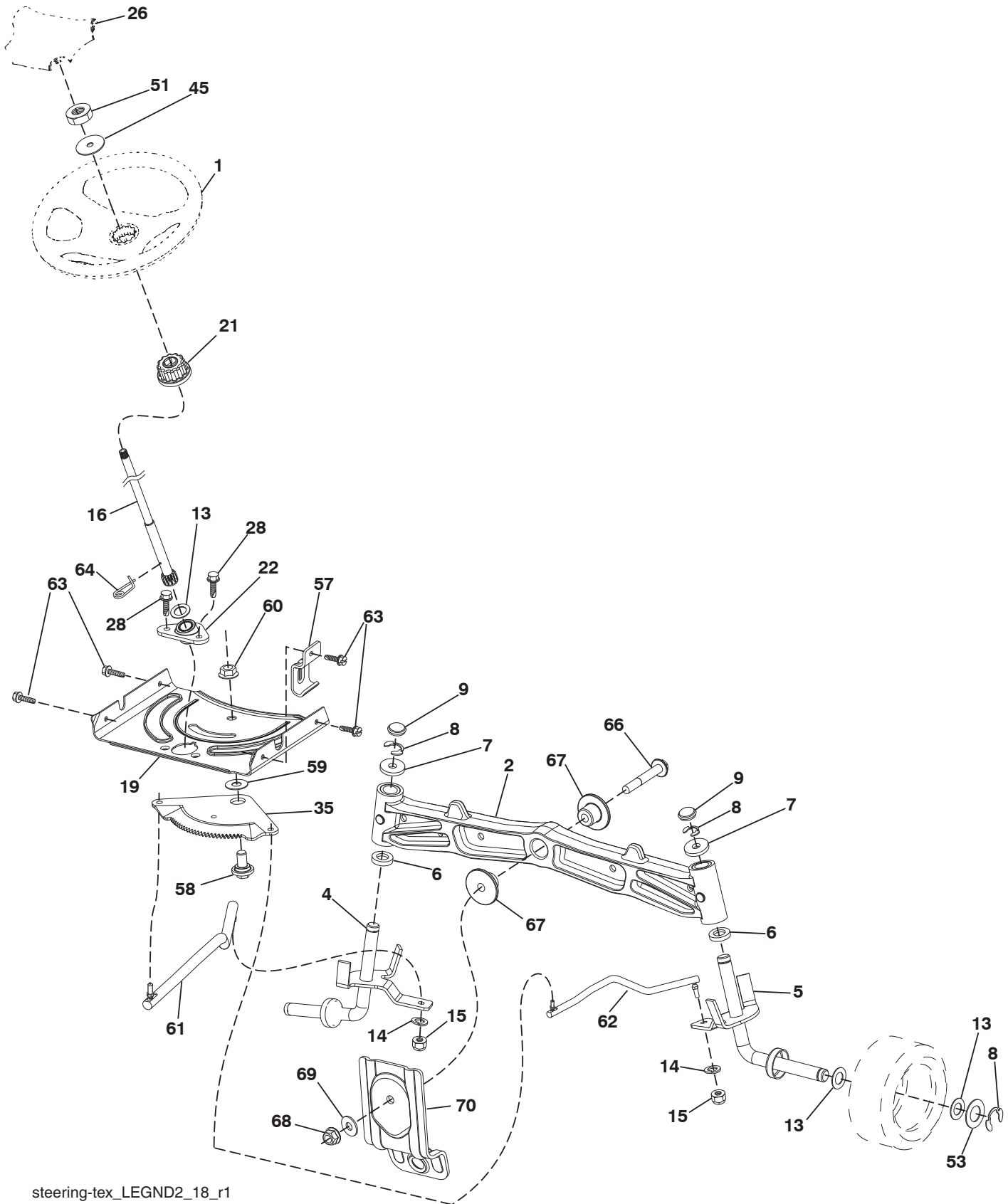
KEY NO.	PART NO.	DESCRIPTION
1	-----	Engine Kawa Model No. FR730V-DS04 (445363) (See engine breakdown.)
2	532 14 97-23	Muffler
9	532 19 43-20	Keeper Belt Engine
11	532 17 93-35	Clutch Electric
12	532 19 43-43	Pulley Engine
14	532 14 84-56	Tube Drain Oil Easy
15	532 43 80-81	Tank Fuel 4.0
18	532 43 92-08	Cap Asm
20	532 17 83-85	Control Throttle
21	532 41 63-58	Screw #10 x 0.750 BOS Thread
22	532 19 15-96	Control Choke
28	532 40 11-35	Fuel Line
29	532 13 71-80	Spark Arrester Kit
37	532 12 34-87	Clamp Hose
41	532 12 61-97	Washer 1-1/2 OD x 15/32 ID x .250
42	810 04 07-00	Washer Lock 7/16
45	873 51 04-00	Nut Keps Hex 1/4-20 unc
62	532 43 40-17	Shield Heat Muffler
69	532 17 81-51	Gasket
70	532 42 47-65	Tube Exhaust LH
71	532 42 47-66	Tube Exhaust RH
85	532 17 99-53	Bolt Hex 7/16-20 x 3.75 Gr. 5
86	532 18 43-62	Nut Hex Flange Toplock M8-1.25
87	532 19 82-39	Bolt 5/16-18 unc x 1 w/Sems
90	817 00 06-16	Screw 3/8-16 x 1
91	532 18 74-95	Bushing
92	817 12 06-16	Screw 3/8-16 x 1

**NOTE:** All component dimensions given in U.S. inches  
1 inch = 25.4 mm

For engine service and replacement parts, call the toll free number for your engine manufacturer listed below:

Kawasaki 1-949-460-5688

**TRACTOR - MODEL NO. (917.240471), PRODUCT NO. LGT24K54**  
**STEERING ASSEMBLY**



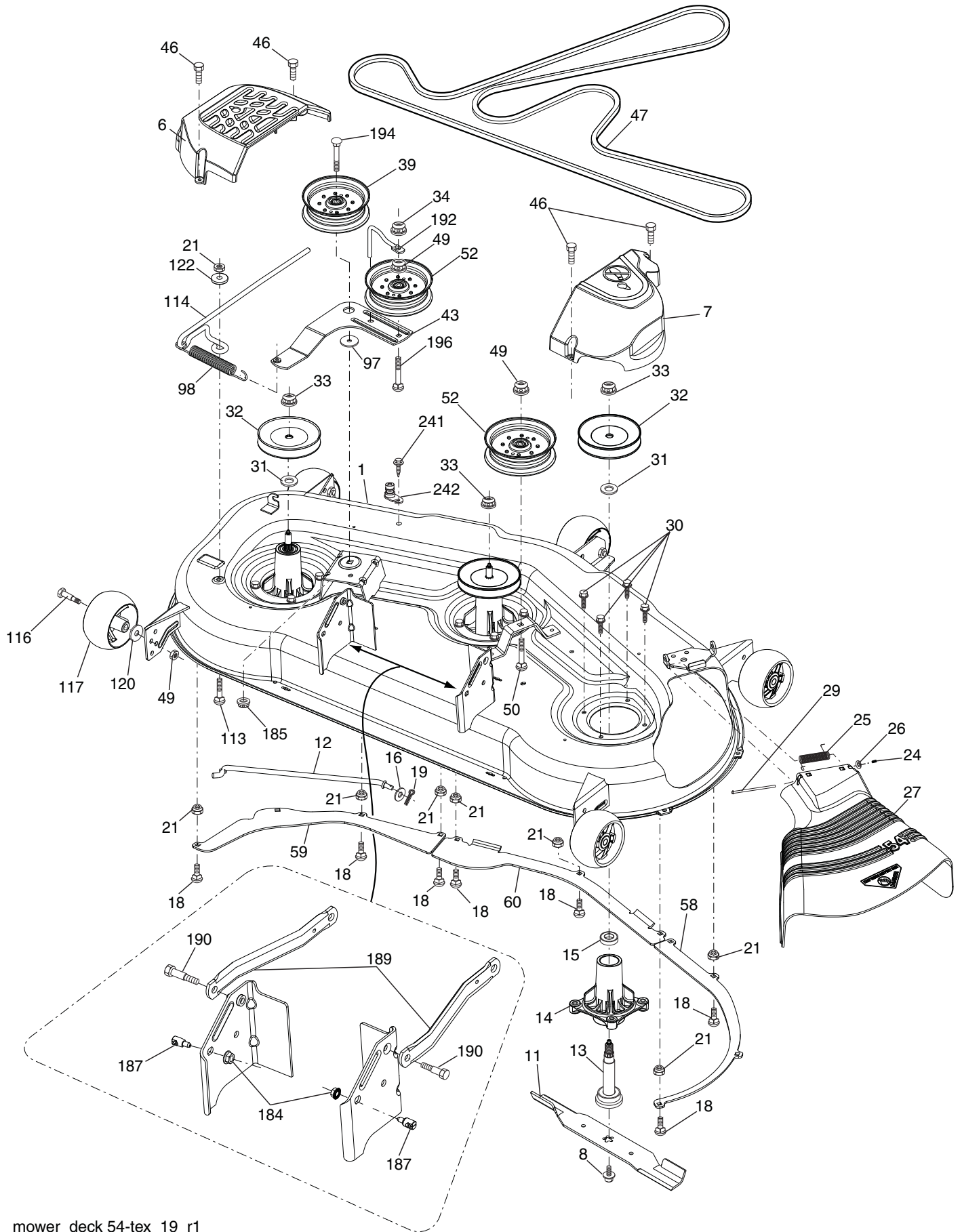
steering-tex\_LEGND2\_18\_r1

**TRACTOR - MODEL NO. (917.240471), PRODUCT NO. LGT24K54  
STEERING ASSEMBLY**

<b>KEY NO.</b>	<b>PART NO.</b>	<b>DESCRIPTION</b>
1	532 43 97-40	Wheel, Steering
2	532 19 59-68	Axle Asm., Front
4	532 40 30-89	Spindle Asm., LH
5	532 40 30-90	Spindle Asm., RH
6	532 12 49-31	Bearing, Race Thrust Harden
7	532 12 17-48	Washer 25/32 x 1-5/8 x 16 Ga.
8	812 00 00-29	Ring, Klip #T5304-75
9	532 12 12-32	Cap, Spindle
13	532 12 17-49	Washer 25/32 x 1-1/4 x 16 Ga.
14	810 04 06-00	Washer, Lock Hvy Hlcl Spr 3/8
15	873 54 06-00	Nut, Crown Lock 3/8-24 unf
16	532 40 82-19	Shaft Steering
19	532 19 47-29	Plate Steering
21	532 18 67-37	Adapter, Wheel Steering
22	532 42 05-37	Strg. Supt. Lower
26	532 43 97-43	Insert, Wheel Steering
28	817 00 06-12	Screw 3/8-16 x 3/4
35	532 19 47-32	Gear, Sector Plate
45	819 18 38-12	Washer 9/16 x 2-3/8 x 12 Ga.
51	873 94 08-00	Nut Hex Jam Toplock 1/2-20 unf
53	532 18 89-67	WasherHardened.793x1.637x.060
57	532 19 72-46	Bracket Upstop
58	532 19 47-47	Bolt Shoulder Sector Pivot CFM
59	532 19 47-48	Washer Thrust Sector Steering
60	873 97 10-00	Nut Flange Lock 5/8-11
61	532 19 47-40	Draglink, LH
62	532 19 47-41	Draglink, RH
63	817 00 05-12	Screw 5/16-18 x 3/4
64	532 19 98-49	Retainer Clip Spring Steering
66	871 02 07-48	Bolt Hex Fghd 7/16-14 x 3 Serr
67	532 19 47-37	Bushing PM Front Axle
68	873 90 07-00	Nut Lock Flange 7/16-14 Gr. 5
69	532 19 91-62	Washer 1.5 x .505 x .118
70	532 19 61-97	Bracket Deck Susp. Front

**NOTE:** All component dimensions given in U.S. inches  
1 inch = 25.4 mm

**TRACTOR - MODEL NO. (917.240471), PRODUCT NO. LGT24K54**  
**MOWER DECK**



mower\_deck 54-tex\_19\_r1

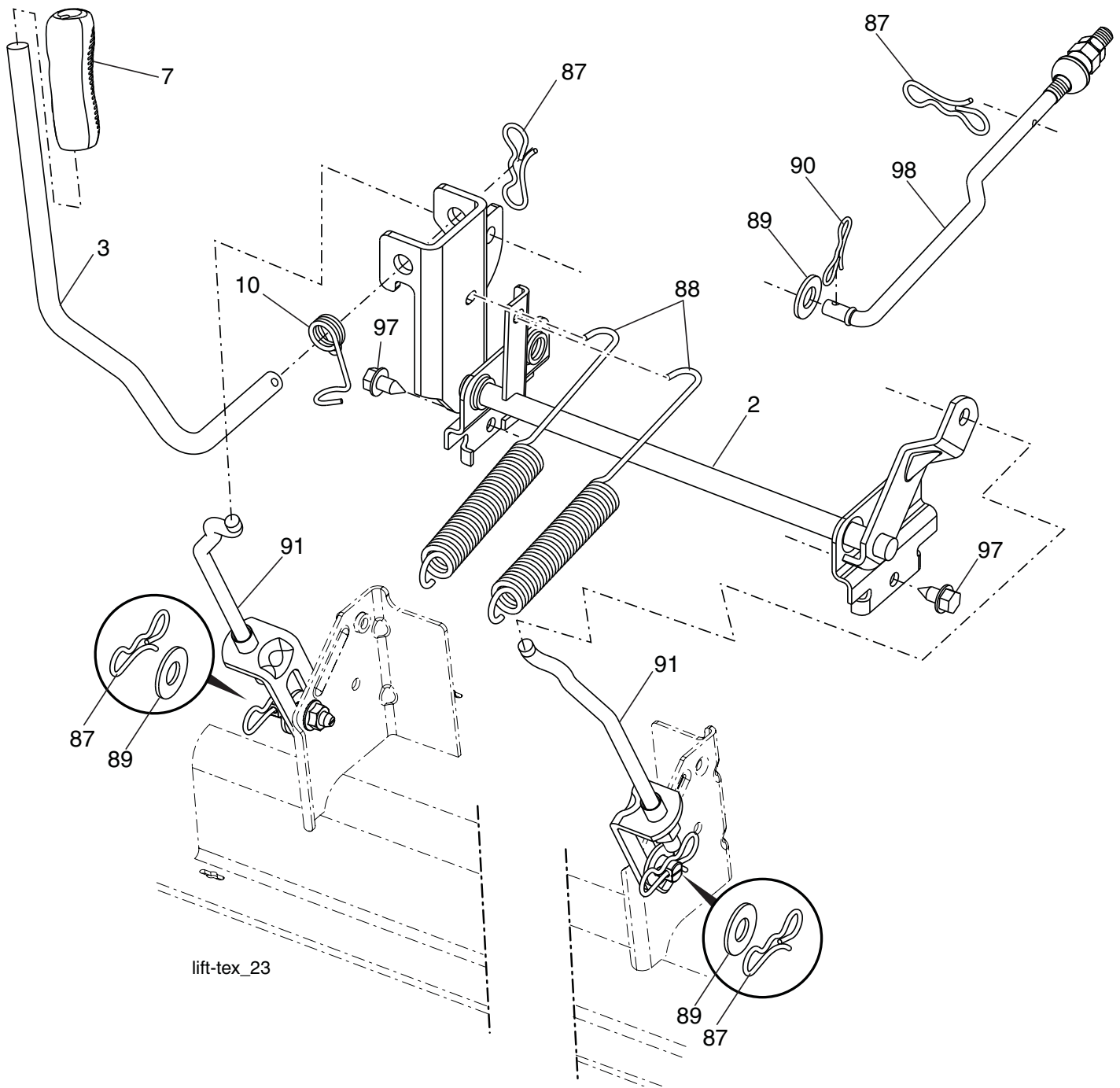
# TRACTOR - MODEL NO. (917.240471), PRODUCT NO. LGT24K54

## MOWER DECK

KEY NO.	PART NO.	DESCRIPTION	KEY NO.	PART NO.	DESCRIPTION
1	532 44 15-47	Deck Weldment Mower	59	532 18 73-44	Baffle Left
6	532 19 60-66	Cover Mandrel LH	60	532 18 76-07	Baffle Center
7	532 19 71-81	Cover Mandrel RH	97	532 17 85-15	Washer Hardened
8	532 19 30-03	Bolt 7/16 Asm. Blade	98	532 19 61-05	Spring Drive
11	532 18 72-56	Blade Bagging	113	872 11 05-08	Bolt Rdhd Sqnk 5/16-18 x 3/4
--	532 18 72-55	Blade Mulching	114	532 18 75-56	Rod Tension Relief
12	532 40 48-51	Rod Anti-Sway	116	532 19 34-06	Bolt, Shoulder
13	532 18 72-91	Shaft Asm. w/Lower Bearing	117	532 17 48-73	Gauge Wheel
14	532 18 72-81	Housing, Mandrel	120	819 13 20-12	Washer 13/32 x 1-1/4 x 12 Ga.
16	819 13 13-12	Washer 3/8	122	532 18 75-57	Bushing Tension Relief
15	532 11 04-85	Bearing, Ball, Mandrel	184	873 90 05-00	Nut Lock Hex Flange
18	872 14 05-05	Bolt Carriage 5/16-18 x 5/8	185	873 90 07-00	Nut Lock Flange 7/16-14 Gr. 5
19	532 19 42-08	Pin Cotter 5/16 Bowtie	187	532 19 51-61	Stud Fastener w/"D" Anti-Rotation
21	873 68 05-00	Nut, Crownlock 5/16-18 unc	189	532 19 51-85	Arm Susp. Mower Rear
24	532 10 53-04	Cap Sleeve	190	532 19 65-39	Bolt Shoulder
25	532 17 81-02	Spring, Torsion	192	532 19 84-68	Keeper Belt Idler
26	532 11 04-52	Nut, Push	194	874 49 07-36	Bolt Carr Sqnk 7/16-24 x 2
27	532 18 89-38	Deflector Shield	196	872 14 06-20	Bolt Rdhd 3/8-16 x 2-1/2 Gr. 5
29	532 13 14-91	Rod, Hinge	241	532 15 29-27	Screw #10-32.5 3/8 Flange
30	532 17 39-84	Screw, Thdroll Washer Head	242	532 41 55-98	Port Washout
31	532 18 76-90	Washer, Spacer Mower Vented	--	532 41 64-05	Coupling Quick
32	532 15 35-35	Pulley, Mandrel	--	532 18 72-92	Mandrel Asm. Service Mandrel Assembly (Includes housing, shaft assembly, and bearing only - pulley/nut/washer and blade bolt/washers not included)
33	532 40 02-34	Nut, Flg. Top Lock			
34	873 68 06-00	Nut Crownlock 3/8-16 unc			
39	532 19 73-80	Pulley, Idler, 4.50			
43	532 19 60-65	Arm, Idler			
46	532 13 77-29	Screw, Thdroll. 1/4-20 x 5/8	--	532 43 29-07	Replacement Mower, Complete
47	532 19 61-03	Belt Deck Drive			
49	873 90 06-00	Nut, Lock Flg. 3/8-16 unc			
50	872 11 06-16	Bolt Rdhd Sqnk 3/8-16 unc x 2			
52	532 19 73-79	Pulley Idler			
58	532 18 73-42	Baffle Right			

**NOTE:** All component dimensions given in U.S. inches  
1 inch = 25.4 mm

**TRACTOR - MODEL NO. (917.240471), PRODUCT NO. LGT24K54**  
**MOWER LIFT**



lift-tex\_23

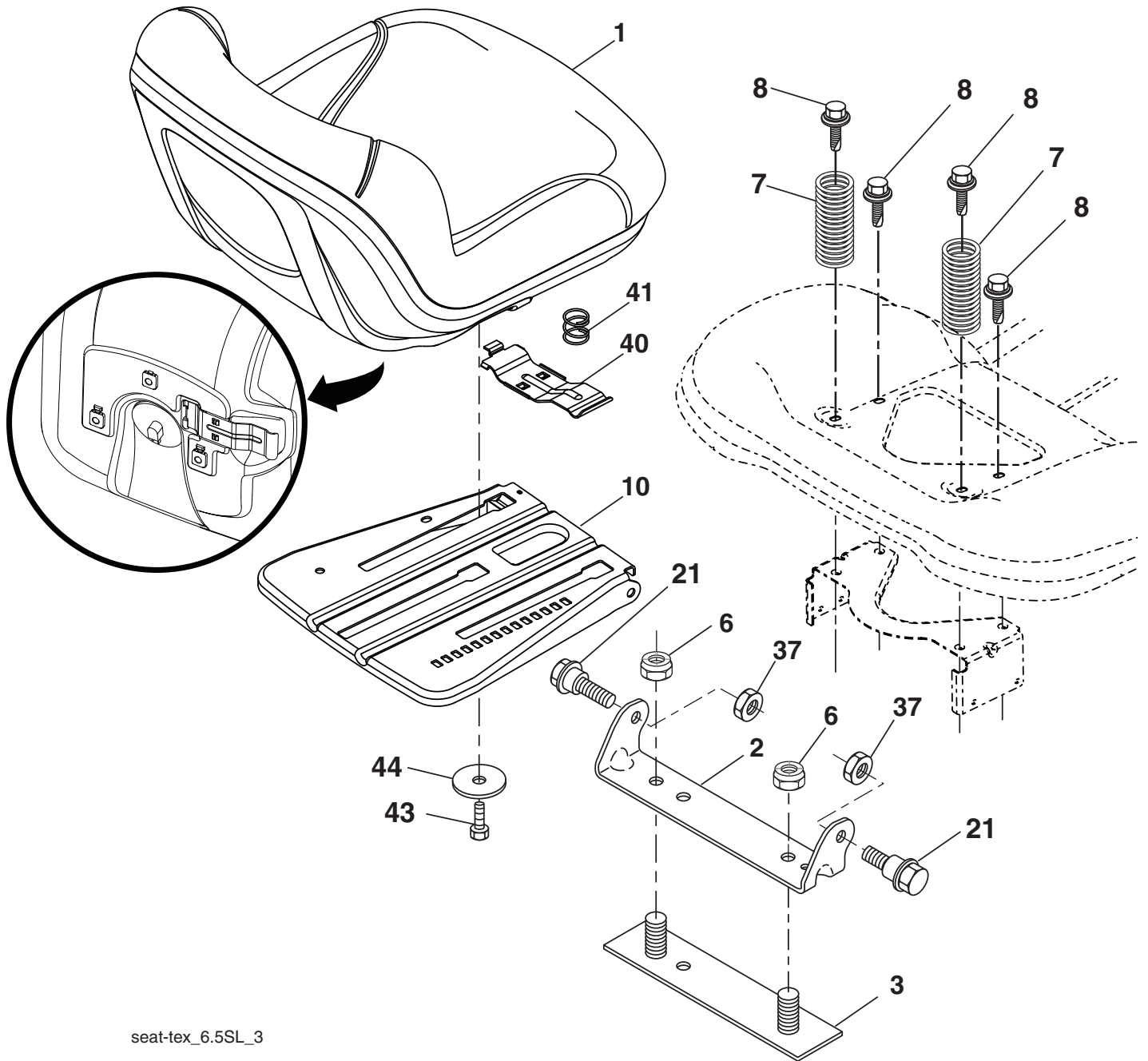
KEY PART NO.	NO.	DESCRIPTION
2	532 42 20-27	Shaft Asm., Lift
3	532 19 52-30	Lever Asm., Lift RH
7	532 41 15-55	Grip, Lever
10	532 19 63-14	Spring Torsion
87	532 19 42-09	Pin Cotter 7/16 Bow Tie Lock
88	532 19 53-04	Spring Lift Assist
89	819 19 19-12	Washer Clear Zinc

KEY PART NO.	NO.	DESCRIPTION
90	532 19 42-08	Pin Cotter 5/16 Bow Tie Lock
91	532 40 34-07	Link Lift Susp Mower Rear
97	817 00 06-12	Screw 3/8-16 x 3/4
98	532 19 52-64	Link Lift Susp. Front Mower

**NOTE:** All component dimensions given in U.S. inches  
 1 inch = 25.4 mm



**TRACTOR - MODEL NO. (917.240471), PRODUCT NO. LGT24K54**  
**SEAT ASSEMBLY**



seat-tex\_6.5SL\_3

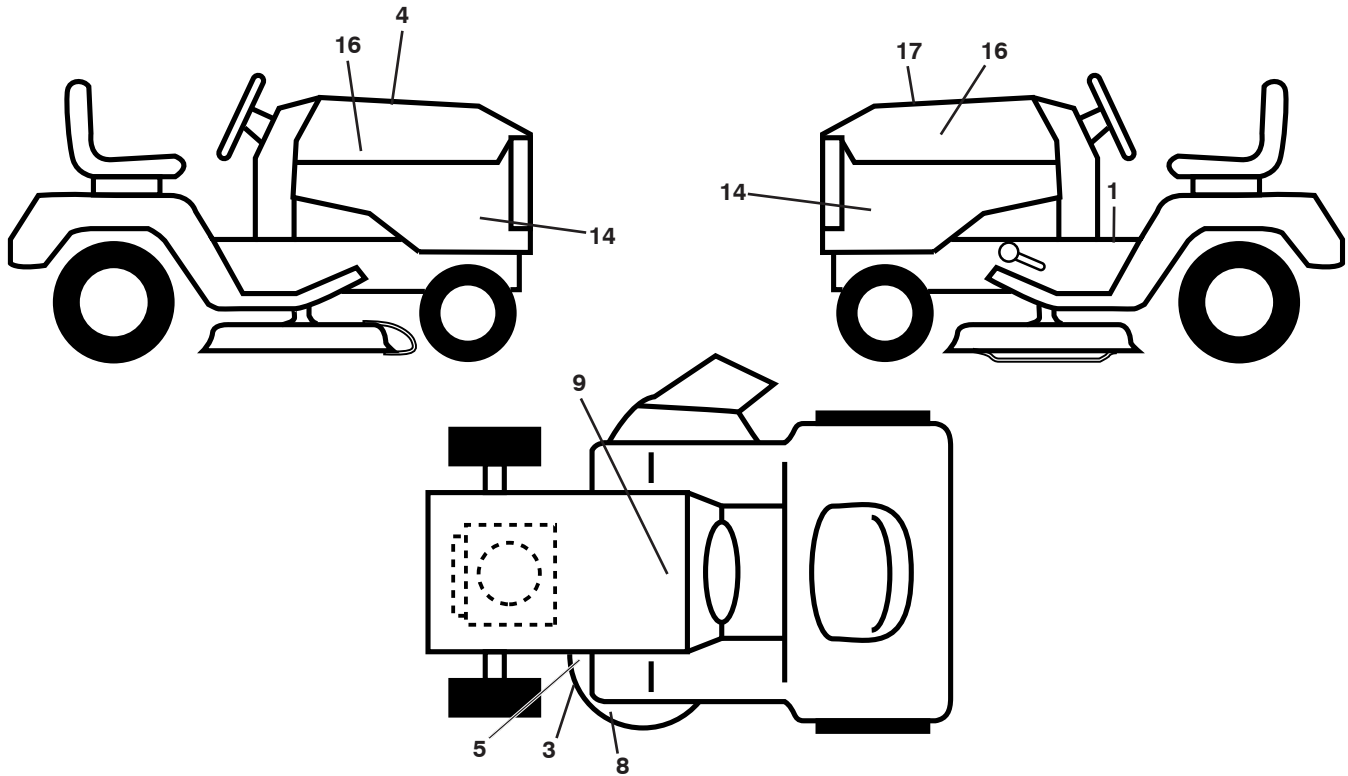
KEY PART NO.	NO.	DESCRIPTION
1	532 43 98-22	Seat
2	532 18 01-66	Bracket Pivot Fender
3	532 14 06-75	Strap, Asm Fender
6	873 80 06-00	Nut, Lock w/Ins. 3/8-16 unc
7	532 12 41-81	Spring, Seat Cprsn
8	532 17 18-77	Bolt 5/16-18 unc x 3/4 w/Sems
10	532 19 69-77	Pan, Seat
21	532 17 18-52	Bolt, Shoulder 5/16-18

KEY PART NO.	NO.	DESCRIPTION
37	873 80 05-00	Nut, Lock 5/16-18 unc
40	532 19 76-61	Handle Slide Seat
41	532 19 82-00	Spring Latch Seat
43	874 76 06-12	Bolt 3/8-16 x 3/4
44	819 13 38-12	Washer 13/32 x 2-3/8 x 12 Ga.

**NOTE:** All component dimensions given in U.S. inches  
 1 inch = 25.4 mm

# TRACTOR - MODEL NO. (917.240471), PRODUCT NO. LGT24K54

## DECALS



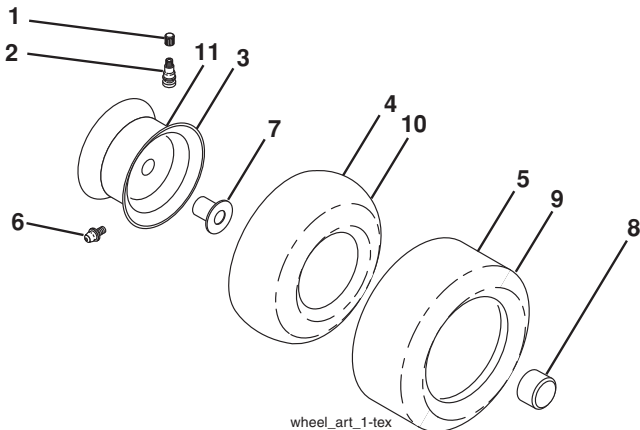
### KEY PART NO. NO.

KEY PART NO.	NO.	DESCRIPTION
1	532 41 16-57	Decal, Fender Warning
3	532 17 05-63	Decal, Warning
4	532 42 38-29	Decal, Hood Cust Resp
5	532 17 84-55	Decal, Mower Caution Tension
8	532 19 87-85	Decal, Mower Sch.
9	532 14 50-05	Decal, Battery Dnge/Poi
14	532 44 04-24	Decal, Panel Side
16	532 42 91-96	Decal, Hood Logo

### KEY PART NO. NO.

KEY PART NO.	NO.	DESCRIPTION
17	532 44 14-54	Decal, Replacement
--	532 16 69-60	Decal, Bypass
--	532 43 98-82	Pad, Footrest, LH
--	532 44 15-42	Pad, Footrest, RH
--	532 44 63-85	Manual, Operators's (English/Spanish)
--	532 44 63-86	Manual, Parts (English/Spanish)

## WHEELS AND TIRES



wheel\_art\_1-tex

### KEY PART NO. NO.

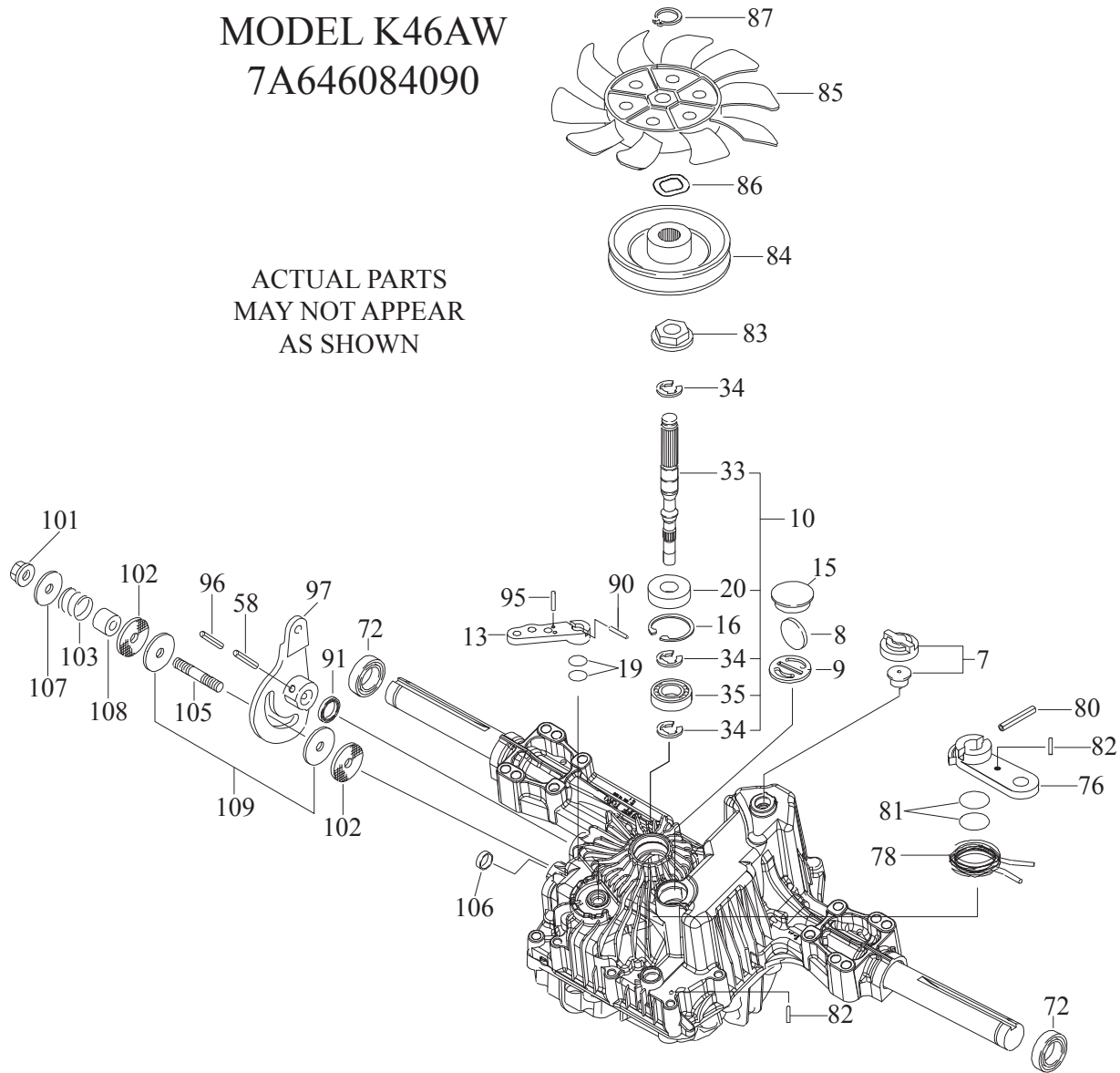
KEY PART NO.	NO.	DESCRIPTION
1	532 05 91-92	Cap, Valve, Tire
2	532 06 51-39	Stem, Valve
3	532 18 18-39	Rim Assembly, Front
4	532 00 81-34	Tube, Front (Service Item Only)
5	532 10 62-30	Tire, Front
6	532 12 49-57	Fitting, Grease (Front Wheel Only)
7	532 12 49-59	Bearing, Flange (Front Wheel Only)
8	532 17 50-39	Cap, Axle
9	532 18 47-08	Tire, Rear
10	532 00 71-54	Tube, Rear (Service Item Only)
11	532 40 17-82	Rim Assembly, Rear
--	532 14 43-34	Sealant, Tire (10 oz. Tube)

**NOTE:** All component dimensions given in U.S. inches  
1 inch = 25.4 mm

**TRACTOR - MODEL NO. (917.240471), PRODUCT NO. LGT24K54  
TUFFTORQ TRANSAXLE MODEL NUMBER K46AW**

**MODEL K46AW  
7A646084090**

ACTUAL PARTS  
MAY NOT APPEAR  
AS SHOWN

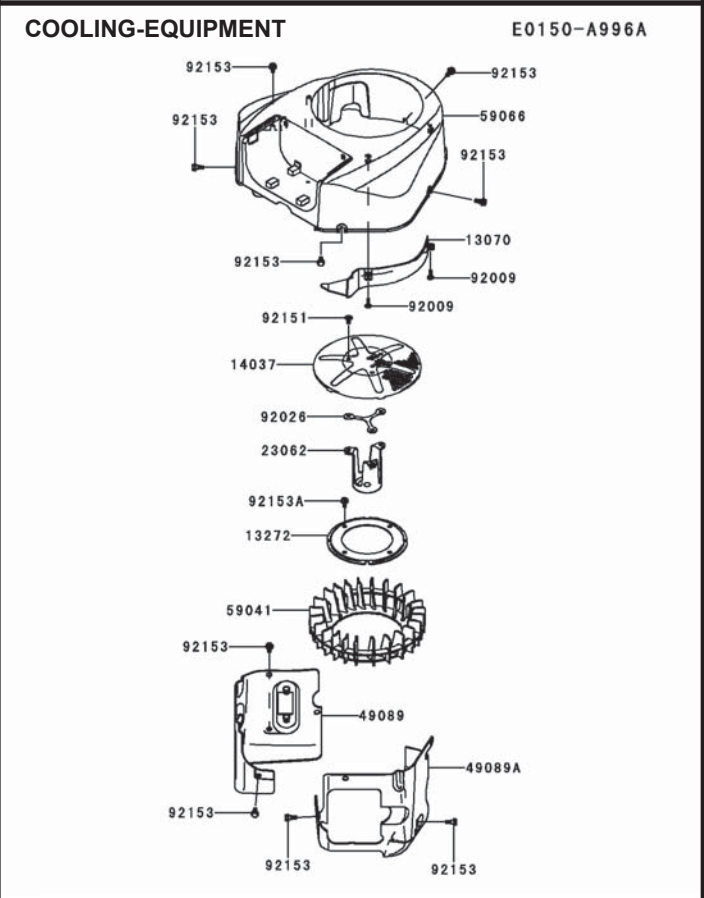
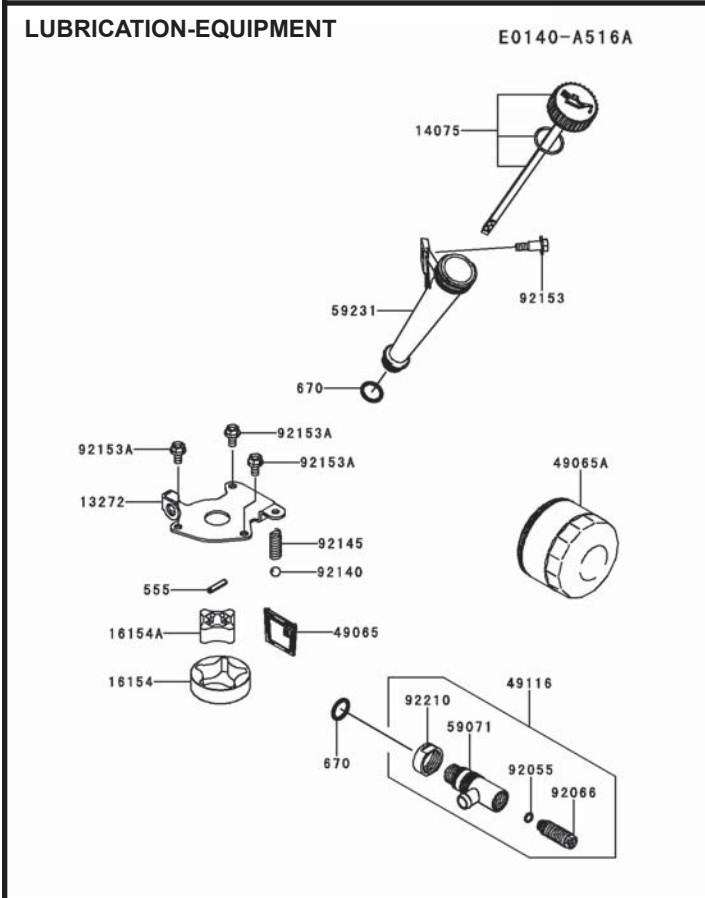
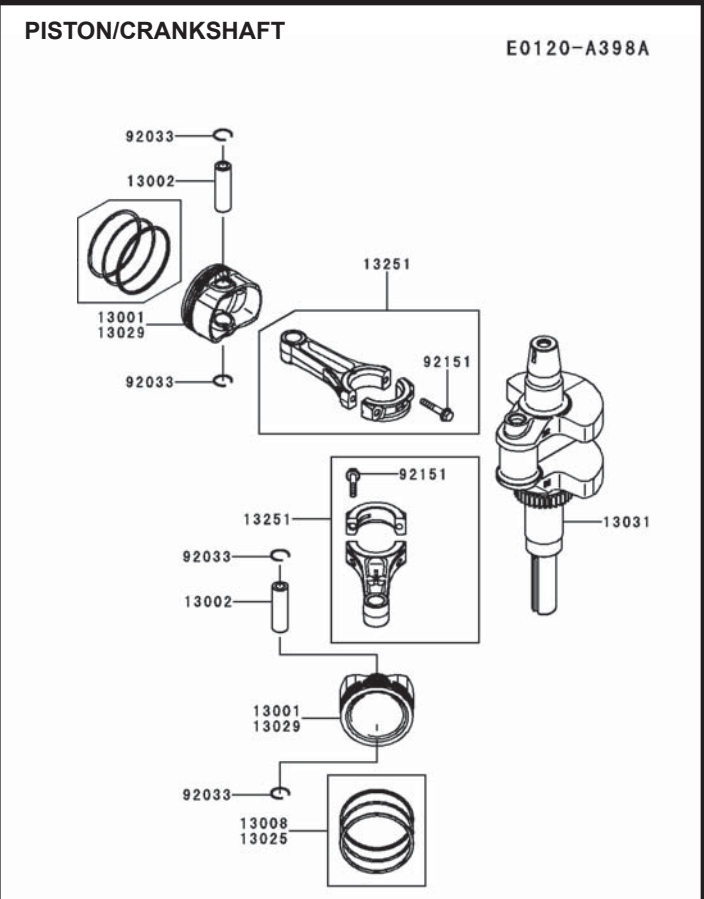
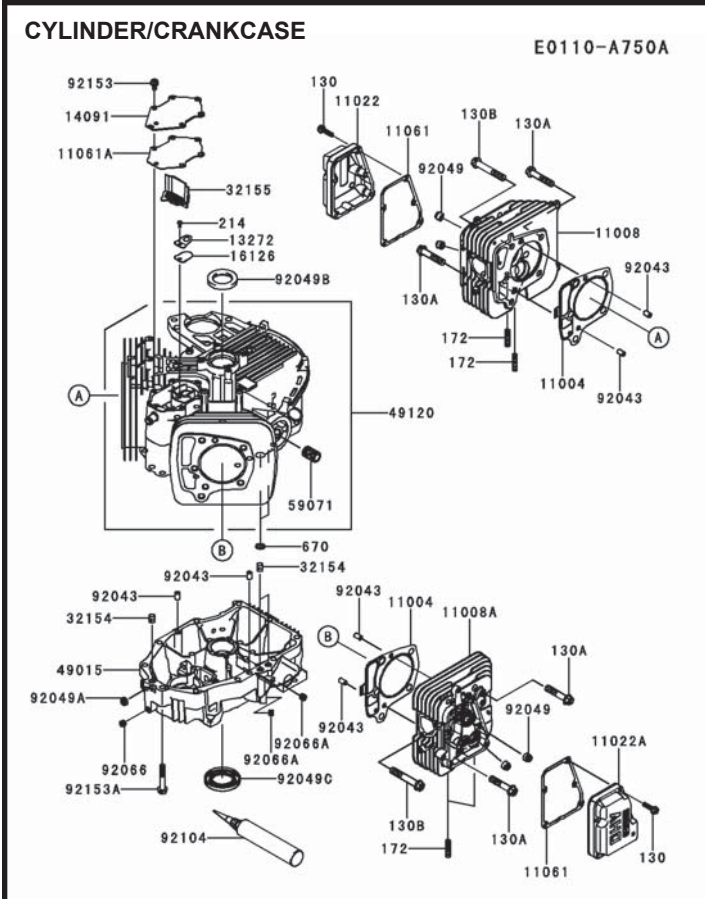


KEY NO.	PART NO.	DESCRIPTION
7	414395	VENT VALVE 15
8	414396	MAGNET
9	414397	MAGNET HOLDER
10	415923	PUMP SHAFT/BEARING KIT
13	414398	BYPASS LEVER
15	414399	SEALING CAP 30
16	414400	SNAP RING C 35
19	414401	O-RING 1A P10A
20	414402	SEAL TC 153507
33	414403	PUMP SHAFT (STANDARD
34	414404	E-RING 15
35	414405	BEARING 6202C3
58	414406	ROLL PIN 6 * 40
72	414407	SEAL 19 * 32 * 8
76	414408	BRAKE LEVER
78	414409	BRAKE RETURN SPRING
80	414410	SPRING PIN 5 * 32
81	414411	O-RING 1A P12
82	414412	SPRING PIN 4 * 16
83	414413	SPINE COLLAR

KEY NO.	PART NO.	DESCRIPTION
84	414414	PULLEY L
85	414415	FAN, BLACK
86	414416	WAVE WASHER
87	414417	SNAP RING
90	414418	SPRING PIN 3.0A * 20
91	414419	OIL SEAL 16 * 22 * 03
95	415850	SPRING PIN 3.0A * 16
96	414420	ROLL PIN 3.5 * 40
97	414421	CONTROL LEVER
101	414216	LOCK NUT 10
102	414423	WASHER 10 * 40 * 4
103	414424	SPRING
105	414425	STUD 10 * 60
106	414426	SEALING CAP 18
107	414427	WASHER 10 * 36 * 2.8
108	414428	COLLAR 10 * 20 * 17
109	414429	FRICITION PLATE KIT

**NOTE:** All component dimensions given in U.S. inches  
1 inch = 25.4 mm

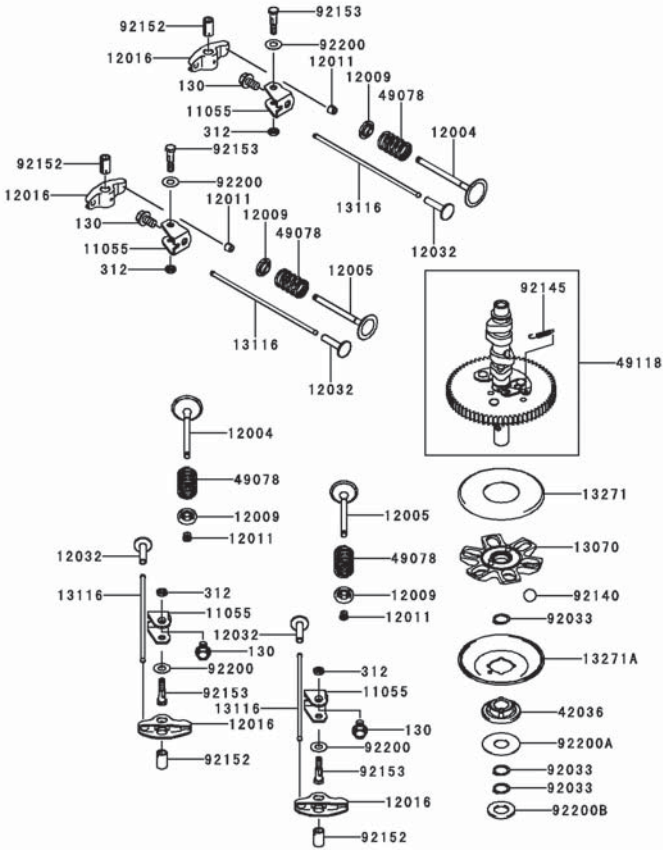
**TRACTOR - MODEL NO. (917.240471), PRODUCT NO. LGT24K54  
KAWASAKI ENGINE - MODEL NUMBER FR730V, TYPE NUMBER DS04**



**TRACTOR - MODEL NO. (917.240471), PRODUCT NO. LGT24K54**  
**KAWASAKI ENGINE - MODEL NUMBER FR730V, TYPE NUMBER DS04**

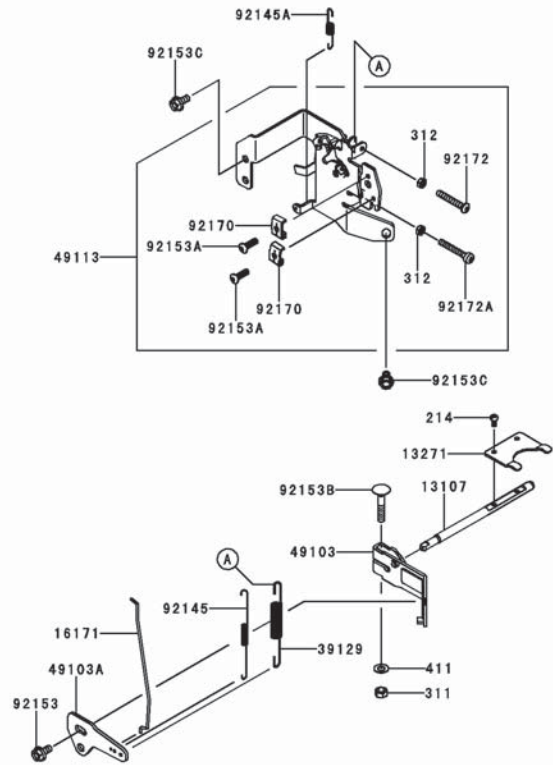
**VALVE/CAMSHAFT**

E0130-A176A



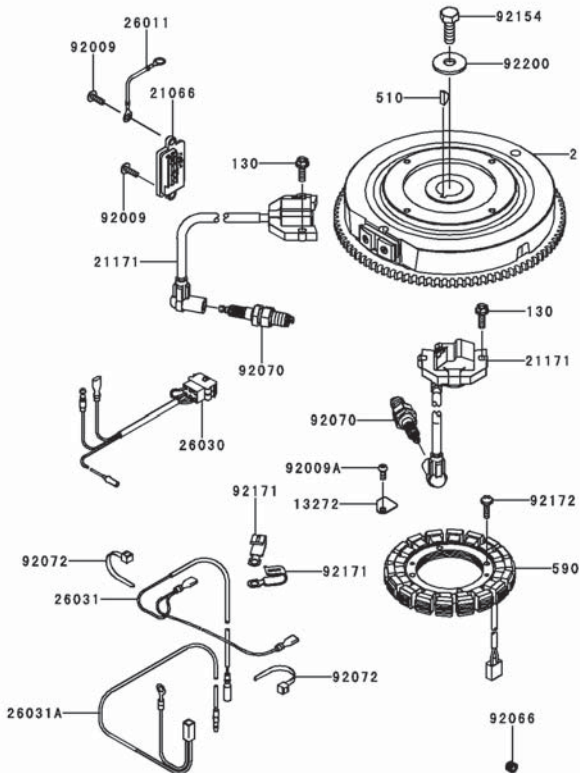
**CONTROL-EQUIPMENT**

E0170-A754A



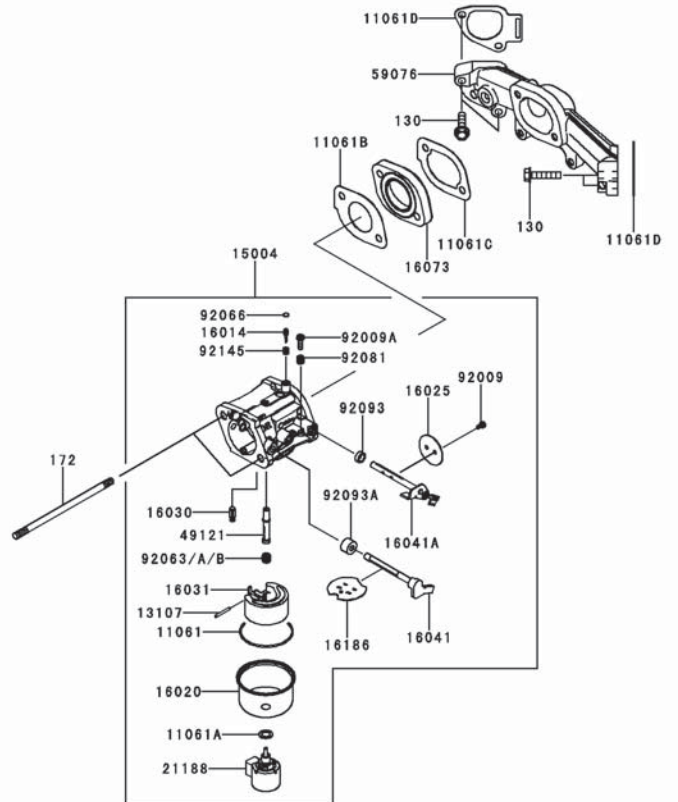
**ELECTRIC-EQUIPMENT**

E0160-B5



**CARBURETOR**

E0180-A800E

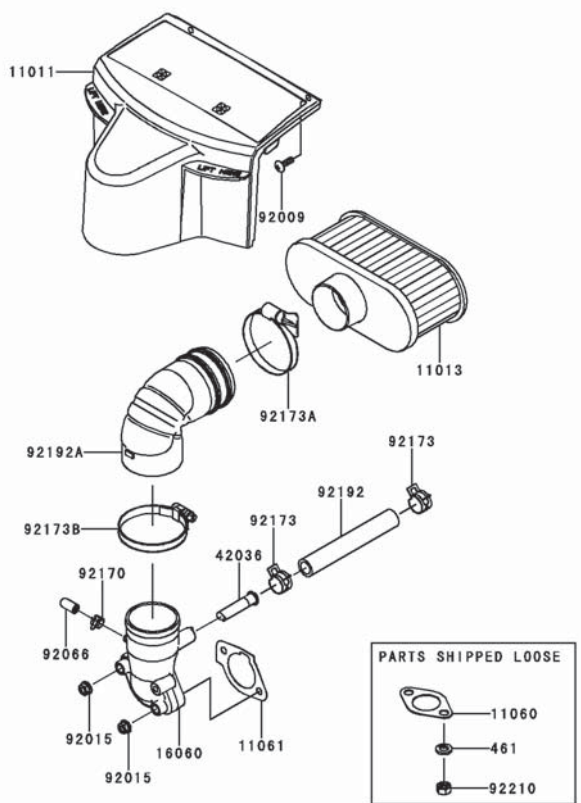




**TRACTOR - MODEL NO. (917.240471), PRODUCT NO. LGT24K54  
KAWASAKI ENGINE - MODEL NUMBER FR730V, TYPE NUMBER DS04**

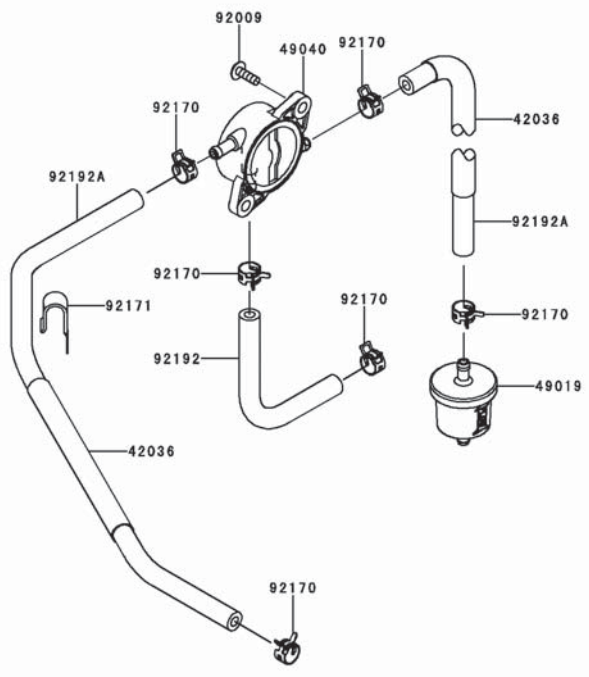
**AIR-FILTER/MUFFLER**

E0190-B282A



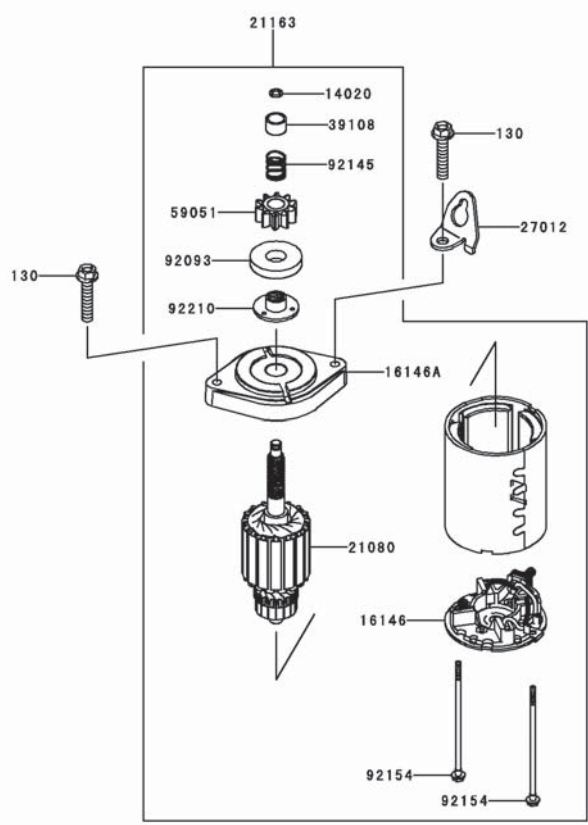
**FUEL-TANK/FUEL-VALVE**

E0200-A694F



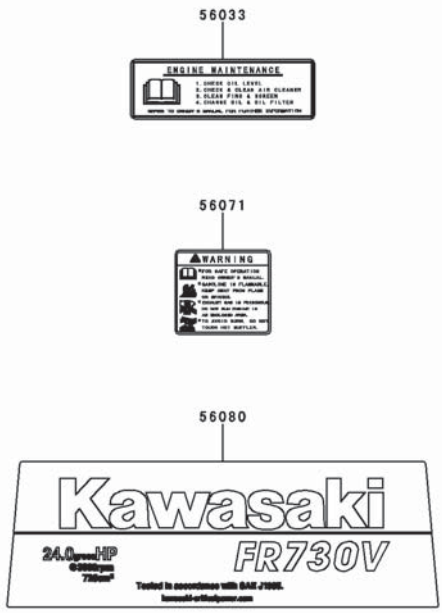
**STARTER**

E0210-A557A



**LABEL**

F0290-B728A



**TRACTOR - MODEL NO. (917.240471), PRODUCT NO. LGT24K54  
KAWASAKI ENGINE - MODEL NUMBER FR730V, TYPE NUMBER DS04**

KEY PART NO. NO.	DESCRIPTION	KEY PART NO. NO.	DESCRIPTION	
<b>CYLINDER/CRANKCASE</b>		<b>VALVE/CAMSHAFT</b>		
11004	11004-7026	GASKET-HEAD	11055 11055-7009	BRACKET
11008	11008-7039	HEAD-COMP-CYLINDER,#1	12004 12004-7008	VALVE-INTAKE
11008A	11008-7040	HEAD-COMP-CYLINDER,#2	12005 12005-7009	VALVE-EXHAUST
11022	11022-0710	CASE-ROCKER,#1	12009 12009-7001	RETAINER-VALVE SPRING
11022A	11022-0711	CASE-ROCKER,#2	12011 12011-2056	COLLET
11061	11061-7083	GASKET,CASE-ROCKER	12016 12016-2066	ARM-ROCKER
11061A	11061-7094	GASKET,BREATHER	12032 12032-7001	TAPPET
13272	13272-7004	PLATE,BREATHER	13070 13070-7017	GUIDE,GOVERNOR
14091	14091-7064	COVER,BREATHER	13116 13116-7007	ROD-PUSH
16126	16126-7020	VALVE,BREATHER	13271 13271-7007	PLATE
32154	32154-7019	PIPE	13271A 13271-7021	PLATE,GOVERNOR
32155	32155-7003	PIPE,BREATHER	42036 42036-7021	SLEEVE
49015	49015-7106	COVER-CRANKCASE	49078 49078-7002	SPRING-ENGINE VALVE,IN
49120	49120-0733	CRANKCASE-COMP	49118 49118-7022	CAMSHAFT-COMP
59071	59071-7025	JOINT	92033 92033-7001	RING-SNAP
92043	92043-1263	PIN	92140 92140-7005	BALL
92049	92049-7001	SEAL-OIL,RVC2 6X11X10.2	92145 92145-7001	SPRING
92049A	92049-7005	SEAL-OIL,SO 8X14X5 HS	92152 92152-7022	COLLAR
92049B	92049-7010	SEAL-OIL,SD 35X48X8 R HS	92153 92153-7100	BOLT,6X29.5
92049C	92049-7028	SEAL-OIL,38X62X8MTCLV	92200 92200-2151	WASHER,8.1X18X0.5
92066	92066-7023	PLUG	92200A 92200-7009	WASHER,16X42X0.91
92066A	92066-7026	PLUG	92200B 92200-7048	WASHER,16.3X30X2.28
92104	92104-7001	GASKET-LIQUID,TB1217H	130 130AA0814	BOLT-FLANGED,8X14
92153	92153-7043	BOLT,6X12	312 312AA0600	NUT-HEX,6MM
92153A	92153-7054	BOLT,8X50	<b>LUBRICATION-EQUIPMENT</b>	
130	130AA0625	BOLT-FLANGED,6X25	13272 13272-7011	PLATE,ROTOR
130A	130CA1050	BOLT-FLANGED,10X50	14075 14075-7013	CAP-ASSY,OIL GAUGE
130B	130CA1065	BOLT-FLANGED,10X65	16154 16154-7010	ROTOR-PUMP,OUTER
172	172BA0818	BOLT-STUD,8X18	16154A 16154-7011	ROTOR-PUMP,INNER
214	214AA0408	SCREW-PAN+-,4X8	49065 49065-7006	FILTER-OIL
670	670B2011	O-RING,11MM	49065A 49065-7007	FILTER-OIL
<b>AIR-FILTER/MUFFLER</b>			49116 49116-7001	VALVE-ASSY
11011	11011-7065	CASE-AIR FILTER	59071 59071-7008	JOINT
11013	11013-7049	ELEMENT-AIR FILTER	59231 59231-7016	FILLER
11060	11060-7016	GASKET,MUFFLER	92055 92055-7002	RING-O,6MM
11061	11061-7086	GASKET,CARBURETOR/ PIPE-INTAKE	92066 92066-7007	PLUG
16060	16060-7038	PIPE-INTAKE	92140 92140-7003	BALL
42036	42036-7022	SLEEVE,BREATHER	92145 92145-7002	SPRING
92009	92009-2303	SCREW	92153 92153-7008	BOLT
92015	92015-1367	NUT	92153A 92153-7043	BOLT,6X12
92066	92066-0095	PLUG	92210 92210-7012	NUT,M22
92170	92170-2042	CLAMP	555 555A0420	PIN-SPRING,4X20
92173	92173-7003	CLAMP	670 670D2016	O-RING,16MM
92173A	92173-7007	CLAMP	<b>STARTER</b>	
92173B	92173-7010	CLAMP	14020 14020-7002	RETAINER
92192	92192-7146	TUBE,12.6X18.6X118	16146 16146-7027	COVER-ASSY
92192A	92192-7165	TUBE	16146A 16146-7030	COVER-ASSY
92210	92210-7027	NUT,M8	21080 21080-0003	ARMATURE
461	461DA0800	WASHER-SPRING,8MM	21163 21163-0714	STARTER-ELECTRIC
<b>LABEL</b>			27012 27012-7008	HOOK
56033	56033-7001	LABEL-MANUAL	39108 39108-0552	RETAINER-SPRING
56071	56071-0216	LABEL-WARNING	59051 59051-7034	GEAR-SPUR
56080	56080-0814	LABEL-BRAND	92093 92093-7007	SEAL
			92145 92145-7060	SPRING
			92154 92154-7001	BOLT
			92210 92210-7017	NUT
			130 130AA0840	BOLT-FLANGED,8X40

**TRACTOR - MODEL NO. (917.240471), PRODUCT NO. LGT24K54  
KAWASAKI ENGINE - MODEL NUMBER FR730V, TYPE NUMBER DS04**

KEY NO.	PART NO.	DESCRIPTION	KEY NO.	PART NO.	DESCRIPTION
<b>ELECTRIC-EQUIPMENT</b>			<b>CARBURETOR</b>		
13272	13272-7012	PLATE	11061	11061-7009	GASKET,CHAMBER
21066	21066-7017	REGULATOR-VOLTAGE	11061A	11061-7010	GASKET,SCREW
21171	21171-0711	COIL-ASSY-IGNITION	11061B	11061-7087	GASKET,INSULATOR
21193	21193-7038	FLYWHEEL-ASSY	11061C	11061-7088	GASKET,INSULATOR/ MANIFOLD
26011	26011-7025	WIRE-LEAD,L=95	11061D	11061-7093	GASKET,MANIFOLD
26030	26030-7008	HARNESS	13107	13107-7018	SHAFT
26031	26031-7040	HARNESS	15004	15004-7052	CARBURETOR-ASSY
26031A	26031-7041	HARNESS	16014	16014-7010	SCREW-PILOT AIR
59031	59031-7017	COIL-CHARGING	16020	16020-7003	CHAMBER-FLOAT
92009	92009-2303	SCREW	16025	16025-7017	VALVE-THROTTLE
92009A	92009-2308	SCREW	16030	16030-7003	VALVE-FLOAT
92066	92066-7026	PLUG	16031	16031-7002	FLOAT
92070	92070-7004	PLUG-SPARK, BPR4ES (NGK), SOLID	16041	16041-7050	SHAFT- CARBURETOR,CHOKE
92072	92072-7003	BAND	16041A	16041-7056	SHAFT-CARBURETOR, THROTTLE
92154	92154-7003	BOLT,12X30	16073	16073-7013	INSULATOR
92171	92171-7008	CLAMP	16186	16186-7006	VALVE-ASSY-CHOKE
92172	92172-7018	SCREW,5X20	21188	21188-7002	SOLENOID
92200	92200-7002	WASHER	49121	49121-7018	NOZZLE-MAIN
130	130AA0620	BOLT-FLANGED,6X20	59076	59076-7019	MANIFOLD-INTAKE
510	510A5100	KEY-WOODRUFF	92009	92009-2083	SCREW
<b>CONTROL-EQUIPMENT</b>			92009A	92009-2349	SCREW
13271	13271-7038	PLATE	92063	92063-7141	JET-MAIN,#122,3280FT
16171	16171-7022	LINK	92063A	92063-7142	JET-MAIN,#124
39129	39129-7035	SPRING-GOVERNOR	92063B	92063-7149	JET-MAIN,#120,6560FT
49103	49103-7014	ARM-GOVERNOR	92066	92066-7032	PLUG
49103A	49103-7015	ARM-GOVERNOR	92081	92081-2234	SPRING
49113	49113-0728	PANEL-COMP-CONTROL	92093	92093-2100	SEAL
92145	92145-7057	SPRING	92093A	92093-7003	SEAL
92145A	92145-7058	SPRING	92145	92145-2122	SPRING
92153	92153-0009	BOLT,6X12	130	130AA0630	BOLT-FLANGED,6X30
92153A	92153-7001	BOLT,SOCKET,5X16	172	172BA06115	BOLT-STUD,6X115
92153B	92153-7033	BOLT,6X35	<b>FUEL-TANK/FUEL-VALVE</b>		
92153C	92153-7043	BOLT,6X12	42036	42036-7015	SLEEVE
92170	92170-7001	CLAMP	49019	49019-0707	FILTER-FUEL
92172	92172-0754	SCREW,5X35	49040	49040-7008	PUMP-FUEL
92172A	92172-0792	SCREW,5X35	92009	92009-2303	SCREW
214	214AA0408	SCREW-PAN+-,4X8	92170	92170-2009	CLAMP
311	311AA0600	NUT-HEX,6MM	92171	92171-7008	CLAMP
312	312AA0500	NUT-HEX,5MM	92192	92192-7148	TUBE,6.4X12.7X150
411	411AA0600	WASHER-PLAIN,6MM	92192A	92192-7188	TUBE,6.35X12.7X390
<b>COOLING-EQUIPMENT</b>			<b>PISTON/CRANKSHAFT</b>		
13070	13070-7019	GUIDE,COOLING AIR	13001	13001-7027	PISTON-ENGINE
13272	13272-7006	PLATE,FAN	13002	13002-0704	PIN-PISTON
14037	14037-7008-9H	SCREEN	13008	13008-7005	RING-SET-PISTON
23062	23062-7022	BRACKET-COMP	13025	13025-7009	RING-SET-PISTON L,0.5
49089	49089-7079	SHROUD-ENGINE	13029	13029-7010	PISTON-ENGINE L,0.5
49089A	49089-7080	SHROUD-ENGINE	13031	13031-7084	CRANKSHAFT-COMP
59041	59041-7014	FAN	13251	13251-7025	ROD-ASSY-CONNECTING
59066	59066-7052	HOUSING-FAN	92033	92033-7018	RING-SNAP
92009	92009-2303	SCREW	92151	92151-7017	BOLT,6X35
92026	92026-7007	SPACER			
92151	92151-7012	BOLT,6X12			
92153	92153-7007	BOLT			
92153A	92153-7043	BOLT,6X12			