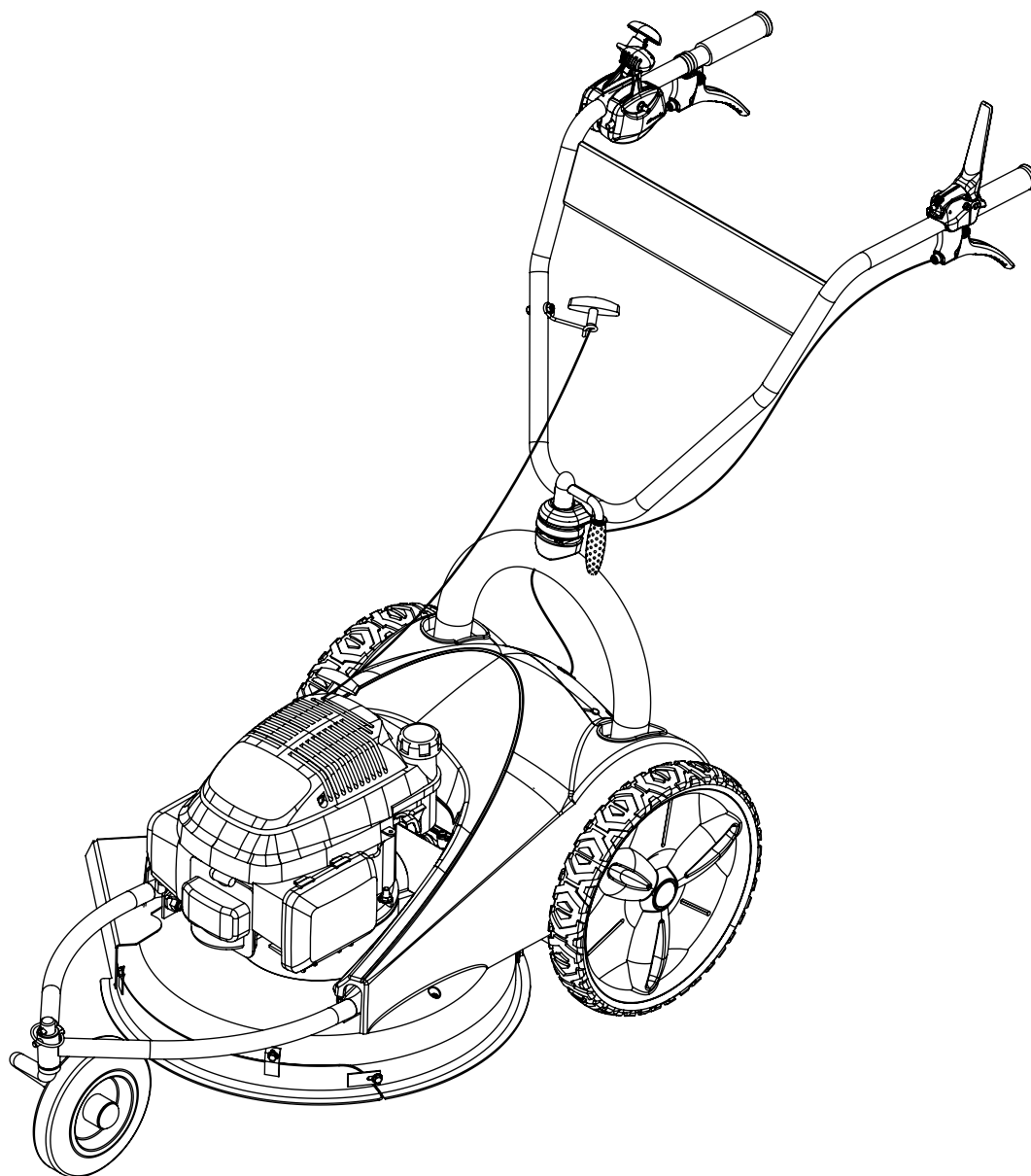


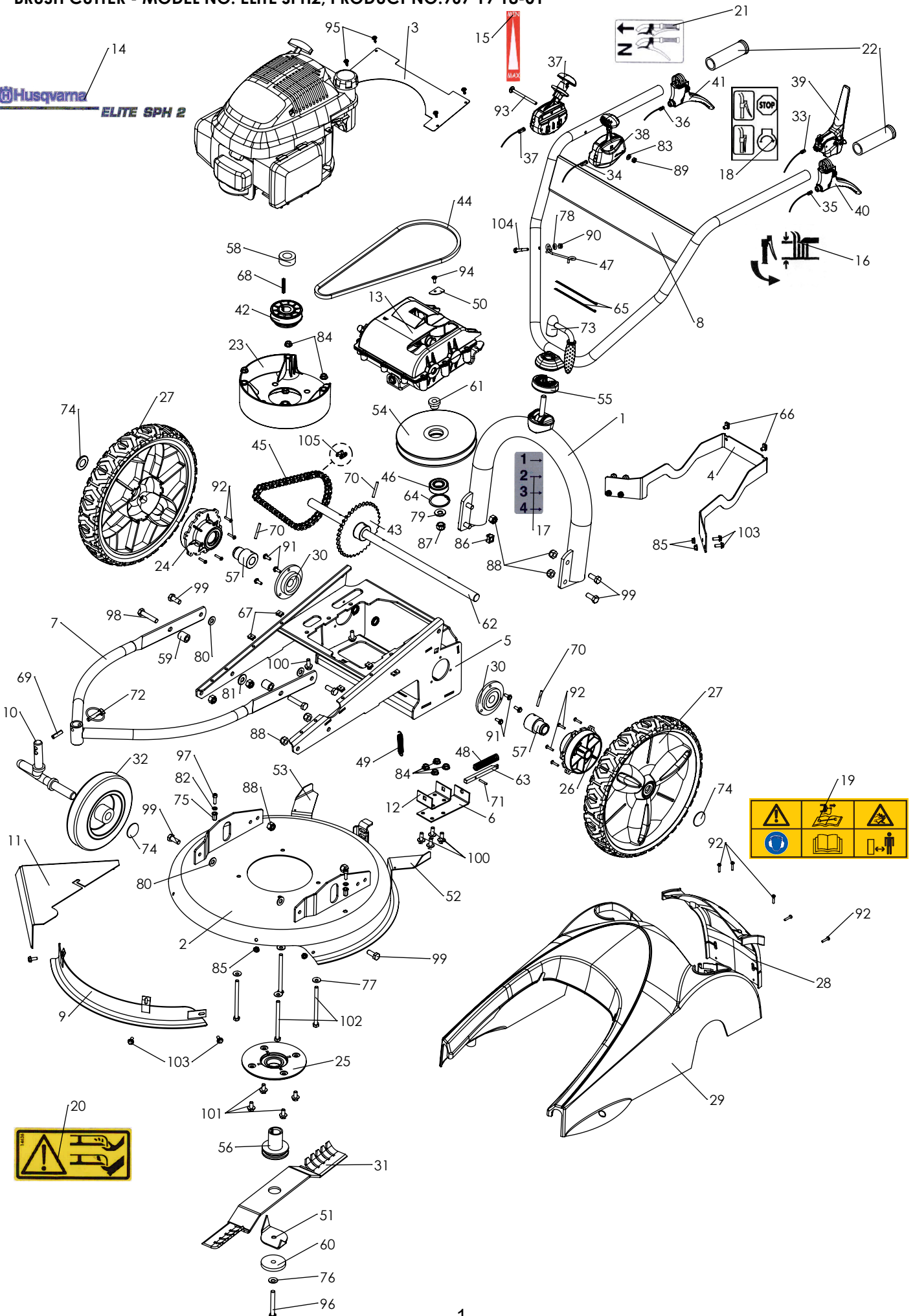
ELITE SPH2

Spare parts
Pièces détachées



REPAIR PARTS

BRUSH CUTTER - MODEL NO. ELITE SPH2, PRODUCT NO.967 19 18-01



REPAIR PARTS

BRUSH CUTTER - MODEL NO. ELITE SPH2, PRODUCT NO.967 19 18-01

| KEY NO. | PART NO. | DESCRIPTION | DESIGNATION | QTY QTE |
|---------|--------------|--|---|---------|
| 1 | 585 42 45-01 | XTERM BVM TUBE FRAM GRIS (627) | ARCEAU XTREM BVM GRIS (627) | 1 |
| 2 | 585 42 46-01 | XTREM BVM BLADE GUARD GREY (627) | COUPELLE XTREM BVM GRIS (627) | 1 |
| 3 | 585 42 47-01 | GCV XTREM BVM COVER BELT BLACK RAL9005 | TOLE PROT COUR GCV XTREM BVM NOIR RAL9005 | 1 |
| 4 | 585 42 48-01 | XTREM BVM COVER SUPPORT BLACK RAL 9005 | TOLE SUPPORT CAPOT XTREM BVM NOIR RAL9005 | 1 |
| 5 | 585 42 49-01 | XTREM BVM REAR FRAME BLACK RAL9005 | CHASSIS ARR XTREM BVM NOIR RAL9005 | 1 |
| 6 | 531 00 94-33 | SUPPORT LOCKING RAISING | SUPP VERROUILLAGE RELEVAGE ECO-03 | 1 |
| 7 | 585 42 50-01 | XTREM FRONT FRAME GREY (627) | CHASSIS AVANT XTREM GRIS (627) | 1 |
| 8 | 585 42 51-01 | XTREM HANDLEBAR GREY (627) | GUIDON XTREM GRIS (627) | 1 |
| 9 | 585 42 52-01 | FRONT DEFLECTOR GREY (627) | DEFLECTEUR AVANT E51 GRIS (627) | 1 |
| 10 | 585 42 84-01 | SUPPORT FRONT WHEEL GREY (627) | SUPP ROUE AVANT E51-03 GRIS (627) | 1 |
| 11 | 585 42 53-01 | SIDE DEFLECTOR GREY (627) | DEFLECTEUR LATERAL E51 GRIS (627) | 1 |
| 12 | 531 00 85-92 | Locking pin support | SUPP AXE RELEVAGEx E51-03xBICHx | 1 |
| 13 | 585 42 54-01 | MODULAR TRANSMISSION MAV MAR | TRANSMISSION MODULAIRE MAV VAR | 1 |
| 14 | 531 29 05-01 | Label "ELITE SPH 2" | ETIQ HUSQVARNA ELITE SPH2 | 1 |
| 15 | 585 42 55-01 | Speed variation label modular transmission | ETIQUETTE VITESSE BOITIER MOD | 1 |
| 16 | 531 00 94-67 | Height cutting label | ETIQ REGL HAUT COUP xFST-XTRMx | 1 |
| 17 | 531 00 94-68 | Cutting setting label E51 Pro V2 | ETIQ ECH HAUT COUPE xPROV2x | 1 |
| 18 | 531 00 84-06 | Engine brake label | ETIQ MANETTE COUPE CIRCUIT | 1 |
| 19 | 531 00 84-05 | "Safety instructions" label | ETIQ "PRECAUTIONS EMPLOI" | 1 |
| 20 | 519 65 32-63 | Label "danger sticker" | AUTO-COLLANT DANGER LAME 78 X | 2 |
| 21 | 519 00 62-25 | Foward movement stricker | AUTO-COLLANT EMBRAY DEBRAY M Av | 1 |
| 22 | 544 31 14-01 | HAND SIDE GRIP | POIGNEE PLASTIQUE DIAM 25 CB | 2 |
| 23 | 544 29 17-01 | Plastic engine raiser | REHAUSSE MOTEUR XTREM-FIRST | 1 |
| 24 | 531 00 94-63 | Right flange bearing for free wheel | PALIER ROUE LIBRE DROIT E51 | 1 |
| 25 | 531 00 94-37 | Flange bearing | PALIER COUPELLE XTREM/FIRST | 1 |
| 26 | 531 00 94-62 | Left flange bearing for free wheel | PALIER ROUE LIBRE GAUCHE E51 | 1 |
| 27 | 531 00 94-36 | Rear wheel | ROUE E51 XTREM | 2 |
| 28 | 531 00 94-73 | Orange RAL2009 inspection hatch | TRAPPE DE VISITE XTREM ORANGE RAL2009 | 1 |
| 29 | 531 00 94-72 | Orange RAL2009 engine bonnet | CAPOT MOTEUR XTREM ORANGE RAL2009 | 1 |
| 30 | 531 00 83-58 | WHEEL FLANGE BEARING Ø20 | PALIER ARBRE ROUE DIAM 20 | 2 |
| 31 | 531 00 94-60 | Blade | LAME LG 510 DEP 30 E51 PROv2 | 1 |
| 32 | 531 00 94-38 | Front Wheel Ø200 | ROUE CENTAURE 281 PEL 20 | 1 |
| 33 | 585 42 56-01 | ENGINE BRAKE CABLE 1354/55 (LASC lever) | CABLE FREIN MOTEUR 1354/55 (manette LASC) | 1 |
| 34 | 531 00 94-51 | THROTTLE CABLE LG 1440MM STROKE 42 | CABLE GAZ LG1440 C42 MANETTE GAZ START TOLE / LGU | 1 |
| 35 | 585 42 58-01 | HEIGHT SETTING CABLE | CABLE REGL HAUTEUR XTREM TRANSMISSION MODULAIRE | 1 |
| 36 | 585 42 59-01 | CLUTCH CABLE LENGHT 1058MM STROKE 125MM | CABLE EMBR LG1058 CF125 BOITIER MODULAIREx MANETTE LAB | 1 |
| 37 | 585 42 60-01 | SPEED TRANSITION CABLE | MANETTE + CABLE VAR VITESSE LG GAINÉ 1070 C45 COUDE | 1 |
| 38 | 585 42 61-01 | UNIVERSAL THROTTLE LGU4R01R0 | LEVIER ACCELERATEUR LGU4R01R0 | 1 |
| 39 | 504 05 15-01 | Brake lever LASC Ø25 stroke 20mm | LEVIER FREIN MOTEUR LASC 05 R 00 Course 20 Guidon 25mm | 1 |
| 40 | 504 05 14-01 | LEVER LAB D25 STROKE 30 Handlebar D25mm | LEVIER EMB LAB D7 B01 Course 30 Guidon D25mm | 1 |
| 41 | 544 31 13-01 | LEVER LAB D25 STROKE 25 Handlebar D25mm | LEVIER EMB LAB C7 B01 Course 25 Guidon D25mm | 1 |
| 42 | 531 00 94-70 | VARIATION MOTOR PULLEY Ø22.2 | POULIE MOTEUR VARIATRICE D22.2 FLASQUE MOBILE ALU | 1 |
| 43 | 585 42 62-01 | SPROCKET 35 TEETH 12.7 Ø20MM | PIGNON 35 DTS 12.7 ALES 20mm | 1 |
| 44 | 585 42 63-01 | Belt AVX10 x 1000La BELT AVX10 x 1000La | COURROIE 6220MC AVX10 x 1000La | 1 |
| 45 | 585 42 64-01 | CHAIN ISO 08B-1 PITCH 12.7 | CHAINE ISO 08B-1 51MAIL 12.7 OUVERTE+1 MCS+ATT RAPID LIVREE | 1 |
| 46 | 585 42 65-01 | 6204 DDU EMQV1 Ball-Bearing | ROULEMENT 6204 DDU EMQV1 | 1 |
| 47 | 531 00 85-97 | Starter Hook | ACCROCHE LANCEUR xE51-03x | 1 |
| 48 | 519 65 32-09 | Locking spring | RESSORT CP 13.4x75 16/10 | 1 |
| 49 | 585 42 66-01 | EXTENSION SPRING 12.2x75.2 | RESSORT TR 12.2x75.2 18/10 GAL | 2 |
| 50 | 585 42 67-01 | CABLE PLATE | PLATINE CABLE TRANS MOD | 1 |
| 51 | 531 00 94-35 | Stringy cutter | COUPE FILANDREUX E51ProV2 | 1 |
| 52 | 531 00 94-71 | Left carter holding sheet | Renfort Capot Gauche XTREM | 1 |
| 53 | 531 00 94-69 | Right carter holding sheet | Renfort Capot Arr droit XTREM | 1 |
| 54 | 585 42 68-01 | OSCILLATING PULLEY | POULIE OSCILLANTE TRANS MOD | 1 |
| 55 | 531 00 94-34 | Handlebar detent quadrant | PIECE INTERM E51ProV2 | 1 |
| 56 | 585 42 69-01 | XTREM10 BLADE HUB | MOYEU LAME XTREM BVM | 1 |
| 57 | 531 00 94-61 | Wheel hub | MOYEU ARBRE ROUE E51PROV2 | 2 |
| 58 | 585 42 70-01 | SPACER 40x22.3x17 | ENTR. 40x22.3x17 Z | 1 |
| 59 | 531 00 94-41 | Spacer 20 x 10.5 x 23 | ENTR. 20x10.5x23 xZN | 2 |
| 60 | 519 65 32-74 | Blade washer | RONDELLE DE SERRAGE E 51 | 1 |
| 61 | 585 42 71-01 | Oscillating pulley axle | AXE DE POULIE OSCILLANTE TRANSMISSION MODULAIRE | 1 |
| 62 | 531 00 94-58 | Wheel shaft E51 Pro V2 | ARBRE ROUE E51ProV2 | 1 |
| 63 | 531 00 85-94 | Locking pin | AXE RELEVAGE xE51-03xBICHx | 1 |
| 64 | 531 00 85-06 | INTERNAL RETAINING RING 47 DIN472-47 | CIRCLIP INTERIEUR 47 DIN472-47 | 1 |
| 65 | 544 31 11-01 | COLLAR | COLLIER POLYAM.3.6 X 140 NOIR | 2 |
| 66 | 531 00 94-47 | Easy clip EJOT | CLIP EASY 4x4x9 | 2 |

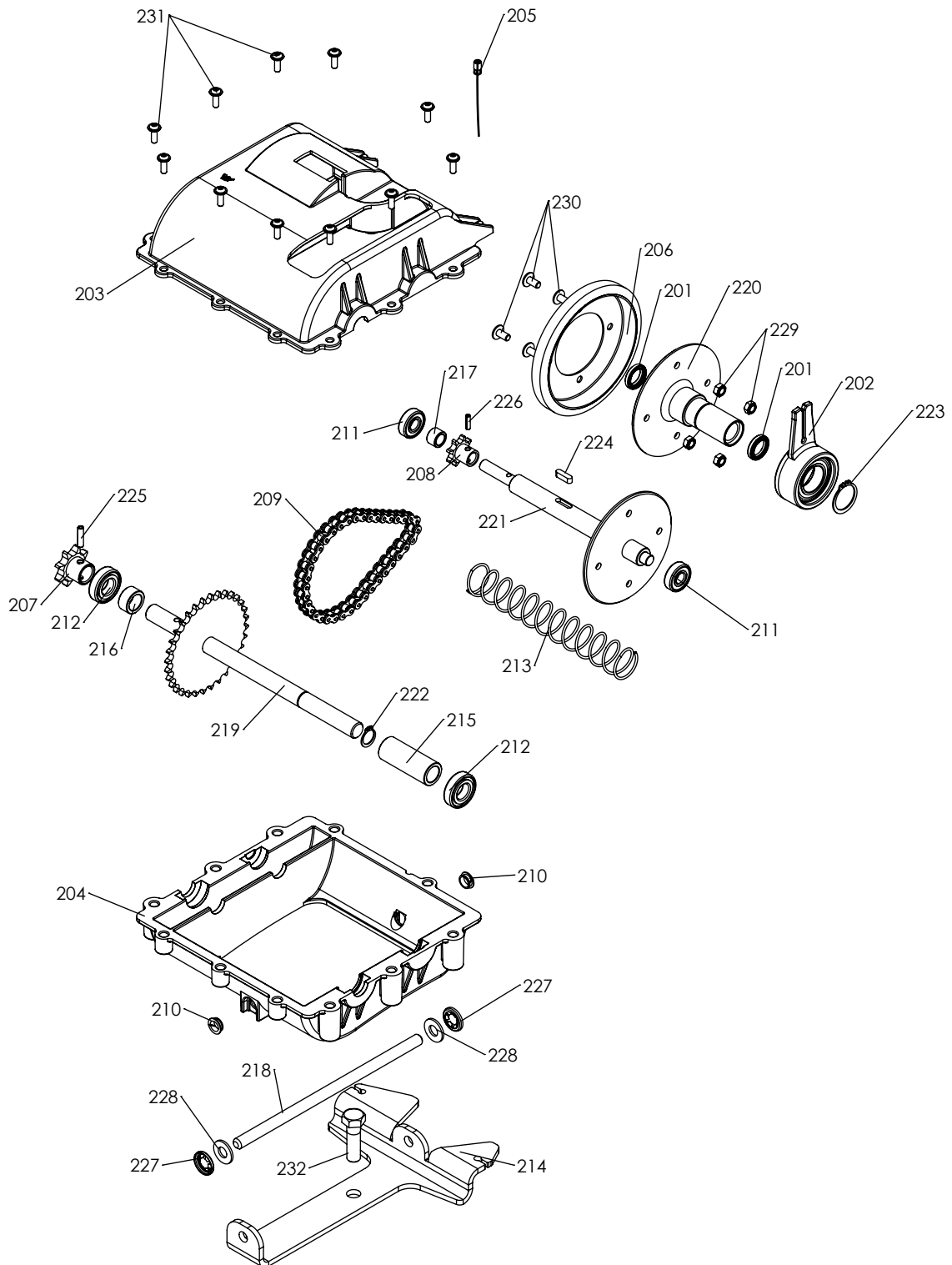
REPAIR PARTS

BRUSH CUTTER - MODEL NO. ELITE SPH2, PRODUCT NO.967 19 18-01

| KEY NO. | PART NO. | DESCRIPTION | DESIGNATION | QTY QTE |
|---------|--------------|---|--|---------|
| 67 | 519 65 34-25 | CLIPS 4.2 | CLIPS PRESTOLE Z/VIS 4.2 EP 4 | 4 |
| 68 | 519 65 30-21 | KEY 4.76X4.76X40 DRO TOL h 9 - XC 48 | CLAVETTE 4.76X4.76X 40 BTS DRO TOL h 9 - XC 48 | 1 |
| 69 | 531 00 85-64 | Cotter-pin 8x30 | GOUPILLE mecanindus 8X30 | 1 |
| 70 | 519 65 31-70 | Pin Ø5x40 HBK | GOUPILLE HBK 5x40 | 3 |
| 71 | 531 00 83-98 | Cotter-pin 4x24 HBK | GOUPILLE HBK 4x24 | 1 |
| 72 | 519 65 31-67 | Cotter-pin | GOUPILLE CLIPS 8X42 ZING | 1 |
| 73 | 544 36 22-01 | Handlebar tightening lever | POIGNEE SERRAGE M12x125 | 1 |
| 74 | 519 65 31-74 | Trim stopper Ø20 | ENJOLIVEUR DIAM 20 CAB 20/38 | 3 |
| 75 | 585 42 73-01 | Insert M6 | INSERT Bollhoff M6 Borgne <3mm | 2 |
| 76 | 504 05 22-01 | Elastic washer 10 Bic | RONDELLE CONTACT 10 BIC NFE 25-511 | 1 |
| 77 | 544 31 49-01 | CONTACT WASHER 8 | RONDELLE CONTACT M8 NF E 25511 | 4 |
| 78 | 531 00 94-03 | CONTACT WASHER 6 | RONDELLE CONTACT 6 BIC NFE 25-511 | 1 |
| 79 | 519 65 34-53 | PLATE WASHER M 12X27X2.5 Z NFE 25513 | RONDELLE PLATE M 12X27X2.5 Z NFE 25513 | 1 |
| 80 | 531 00 83-89 | PLATE WASHER M 10X22X2 Z NFE 27611 | RONDELLE PLATE M 10X22X2 Z NFE 27611 | 4 |
| 81 | 531 00 84-66 | PLATE WASHER M 10X27X2 Z NFE 27611 | RONDELLE PLATE M 10X27X2 Z NFE 27611 | 2 |
| 82 | 531 00 85-64 | Washer M6x12x1.2z | RONDELLE PLATE M 6X12X1 Z NFEN 25513 | 2 |
| 83 | 519 65 34-49 | PLATE WASHER M 6X14X1,2 Z NFEN 25513 | RONDELLE PLATE M 6X14X1,2 Z | 1 |
| 84 | 519 65 34-30 | NUT H M8 Z NOTCHED SHOULDER | ECROU HM 8 ZEMB CR DIN 6923-8 | 8 |
| 85 | 519 65 34-32 | NUT H M6 Z NOTCHED SHOULDER | ECROU HM 6 ZEMB CR DIN 6923 | 7 |
| 86 | 585 42 74-01 | Caged nut M10 C 4811C | ECROU CAGE M10C 4811C | 1 |
| 87 | 752 25 50-51 | BLOCKING NUT M 12 Z | ECROU FREIN M 12 Z DIN 985/8 | 1 |
| 88 | 519 65 34-58 | BLOCKING NUT M 10 Z | ECROU FREIN M 10 Z DIN 985/8 | 9 |
| 89 | 732 26 16-01 | BLOCKING NUT M 6 Z | ECROU FREIN M 6 Z DIN 985-8 | 1 |
| 90 | 501 98 59-01 | Nut HM6 z | ECROU H.U. M 6 Z | 1 |
| 91 | 504 05 27-01 | Screw HM6x16 z Self-tapping | VIS AUTOTAR TH A EMB 6 X 16 Z | 6 |
| 92 | 531 00 94-49 | Screw WN 1452 K40x20 Torx | VIS TORX WN 1452 K40x20 | 17 |
| 93 | 585 42 75-01 | Screw TBCC M6x80/20 z | VIS TRCC 6x80/20 Z DIN 603 CI 4.6 | 1 |
| 94 | 585 43 17-01 | SCREW TORX M5x15 | VIS MX TCBL TORX M5X16 Z | 1 |
| 95 | 519 65 34-26 | SCREW POZI 4.2X16Z | VIS TOLE TETE POELIER D11 POZI Cr 4.2X16 Z | 4 |
| 96 | 531 00 83-18 | Screw 3/8 TH24 UNF Lg70 | VIS 3/8 TH24 UNF LG 70 Z | 1 |
| 97 | 531 00 84-09 | SCREW CHC M6x20z | VIS CHC 6 X 20 Z | 2 |
| 98 | 519 65 31-27 | Screw H M10x50 z | VIS H 6/8 10X50/26 Z DIN931 | 2 |
| 99 | 519 65 31-23 | SCREW H M10x25 Z | VIS H 10 X25 Z DIN 933/8/8 | 8 |
| 100 | 519 65 34-33 | SCREW H M8X20 Z NOTCHED SHOULDER CL 8.8 | VIS H 8x20 Z EMB CR | 8 |
| 101 | 531 00 82-02 | SCREW H M8X16 Z NOTCHED SHOULDER CL 6.8 | VIS H 8x16 Z EMB CR DIN 6921 CL 6.8 | 4 |
| 102 | 519 65 30-45 | Screw HM 8x110 z | VIS HM8x110/22Z ISO 4014 CL8.8 | 4 |
| 103 | 519 65 34-35 | SCREW HM 6X16 Z NOTCHED SHOULDER | VIS H 6x16 Z EMB CR DIN 6921 | 7 |
| 104 | 519 65 34-37 | Screw HM6x35z | VIS H 6 X 35 Z NFE 24017 CL6.8 | 1 |
| 105 | 504 07 22-01 | Quick fastener (12.7) | ATTACHE RAPIDE 12.7 N 10.08B | 1 |

REPAIR PARTS

BRUSH CUTTER - MODEL NO. ELITE SPH2, PRODUCT NO.967 19 18-01



REPAIR PARTS

BRUSH CUTTER - MODEL NO. ELITE SPH2, PRODUCT NO.967 19 18-01

| KEY NO. | PAR NO. | DESCRIPTION | DESIGNATION | QTY QTE |
|---------|--------------|-------------------------------|--|---------|
| 201 | 585 42 89-01 | Lip seal 17x23x4/5 NBR | JOINT A LEVRE 17X23X4/5 NBR TYPE WPK | 2 |
| 202 | 585 42 91-01 | Modular transmission | FOURCHETTE TRANSMISSION MODULAIRE | 1 |
| 203 | 585 42 93-01 | MODULAR TRANSMISSION | CARTER SUPERIEUR TRANSMISSION MODULAIRE | 1 |
| 204 | 585 42 94-01 | Modular transmission | CARTER INFERIEUR TRANSMISSION MODULAIRE | 1 |
| 205 | 585 42 95-01 | Clutch cable | CABLE MAR LG40 CF100 BOITIER MODULAIRE | 1 |
| 206 | 585 42 96-01 | OVERMOLDED FRICTION WASHER | RONDELLE DE FRICTION SURMOULEE | 1 |
| 207 | 585 42 97-01 | SPROCKET 8 TEETH PITCH 12.7 | PIGNON 8 DENTS PAS 12.7 | 1 |
| 208 | 585 42 98-01 | SPROCKET 8 TEETH PITCH 9.525 | PIGNON 8 DENTS PAS 9.525 | 1 |
| 209 | 585 42 99-01 | CHAIN ISO 06B-1 PITCH 9.525 | CHAINE ISO 06B-1 PAS 9.525 38 MAILLONS RSF | 1 |
| 210 | 585 43 00-01 | IGUS RING MCM 10-03 | BAGUE IGUS MCM 10-03 | 2 |
| 211 | 585 43 01-01 | 6000 2RS BALL BEARING 10X26X8 | ROULEMENT 6000 2RS 10x26x8 | 2 |
| 212 | 585 43 02-01 | BEARING BALL 6002 2RS | ROULEMENT 6002 2RS | 2 |
| 213 | 585 43 03-01 | LOCKING SPRING | RESSORT VARIATION VITESSE TRANSMISSION MODULAIRE | 1 |
| 214 | 585 43 04-01 | Modular transmission | BALANCIER TRANS MOD | 1 |
| 215 | 585 43 05-01 | SPACER 22X15X56.7 | ENTR. 22x15x56.7 N | 1 |
| 216 | 585 43 06-01 | SPACER 22x15x10.6 | ENTRETOISE 22x15x10.6 | 1 |
| 217 | 585 43 07-01 | SPACER 15x10.2x10 | ENTRETOISE 15x10.2x10 | 1 |
| 218 | 585 43 08-01 | WALKING BEAM AXLE | AXE BALANCIER TRANSMISSION MODULAIRE | 1 |
| 219 | 585 43 09-01 | Output shaft | ARBRE SORTIE TRANS MOD | 1 |
| 220 | 585 43 10-01 | FORWARD HUB | MOYEU MAV TRANS MOD | 1 |
| 221 | 585 43 11-01 | Speed variation shaft | ARBRE VARIATION TRANS MOD | 1 |
| 222 | 544 34 62-01 | EXTERNAL RETAINING RING 15 | CIRCLIPS EXT. DE 15 | 1 |
| 223 | 501 99 69-01 | EXTERNAL RETATING RING 25 | CIRCLIPS EXT. DE 25 | 1 |
| 224 | 531 00 83-95 | KEY 5x5x18 DIN 6885 A | CLAVETTE 5x5x18 BTS ROND DIN 6885 FORME A | 1 |
| 225 | 585 43 15-01 | PIN Ø5x20 | GOUPILLE HBK 5X20 ISO 8748ST | 1 |
| 226 | 585 43 16-01 | PIN Ø4x16 HBK | GOUPILLE HBK 4x14 ISO 8748ST | 1 |
| 227 | 519 65 34-62 | Starlock washer Ø10 | RONDELLE STARLOCK Ø10 | 2 |
| 228 | 531 00 83-89 | PLATE WASHER M 10X22X2 Z | RONDELLE PLATE M 10X22X2 Z NFE 27611 | 2 |
| 229 | 732 26 16-01 | BLOCKING NUT M 6 Z | ECROU FREIN M 6 Z DIN 985-8 | 4 |
| 230 | 580 31 37-01 | Screw Torx M6x12 | VIS-WN7380/2-010.9-TX30-M6X12 (A2K) Vis Torks a embase | 4 |
| 231 | 585 43 17-01 | SCREW TORX M5x15 | VIS MX TCBL TORX M5X16 Z | 11 |
| 232 | 501 99 19-01 | Screw HM 12x40z | VIS H 12 X 40 Z DIN 933/8.8 | 1 |