



Collection System

967004601



Please read the operator's manual carefully and make sure you understand the instructions before using the machine.

ASSEMBLY

ASSEMBLY	4
MAINTENANCE	
HOSE CARE	9
CLEANING AND WASHING	9
POLY MESH CARE	9
PREVENTATIVE MAINTENANCE SCHEDULE	9
TROUBLESHOOTING GUIDE	9
REPAIR PARTS	
BLOWER.....	10
CLAMSHELL REAR	12
CLAMSHELL FRONT	14
WEIGHTS, BAFFLES, SHIELDS.....	16

Tools Required

Ratchet	$\frac{9}{16}$ " Socket
Torque Wrench	$\frac{3}{4}$ " Wrench (2)
$\frac{1}{2}$ " Wrench	$\frac{3}{4}$ " Socket
$\frac{1}{2}$ " Socket	Flat Screw Driver
$\frac{9}{16}$ " Wrench	1" Wrench - open end (2)

Operating the Collection System

- **DO NOT** use the collection system without the blower assembly and hoses securely attached.
- **DO NOT** operate mower with grass catcher, unless the front weights are installed.
- Make sure hoses are connected at both ends. Inspect hoses prior to each use.
- Do not use the unit on slopes greater than 10 degrees.
- The mower must be running in order to vacuum debris through the mower deck.
- In heavy grass, it may be necessary to mow and collect at a slower ground speed.
- Never attempt to unclog the collection system until the mower's engine has been shut off and all moving parts have come to a complete stop.
- Do not stand behind the vent at the rear of the collection system. There is the the potential for small pieces of blowing debris to escape through the vent.
- Wear eye and ear protection.



WARNING

Before servicing unit, wait for all moving parts to come to a complete stop. Turn engine off and remove the spark plug wire.



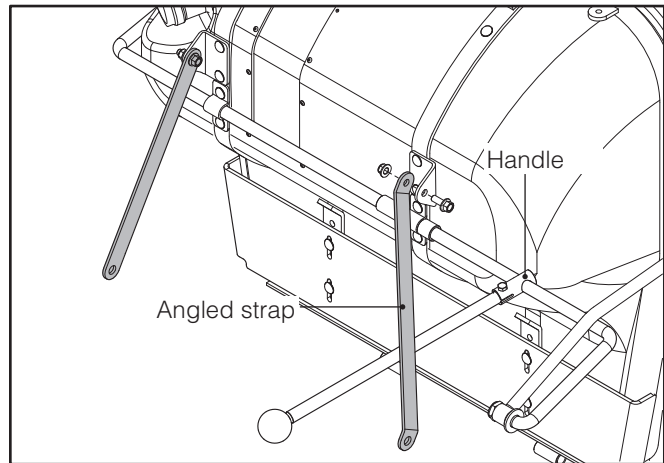
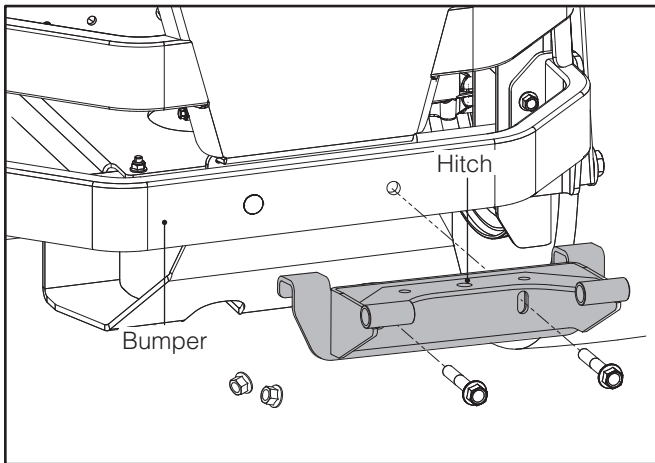
WARNING

The collection system must be completely empty or removed while driving the mower forward onto a trailer. If the mower must be loaded onto a trailer while there is still debris in the container, the mower must be backed onto the trailer to avoid tipping.

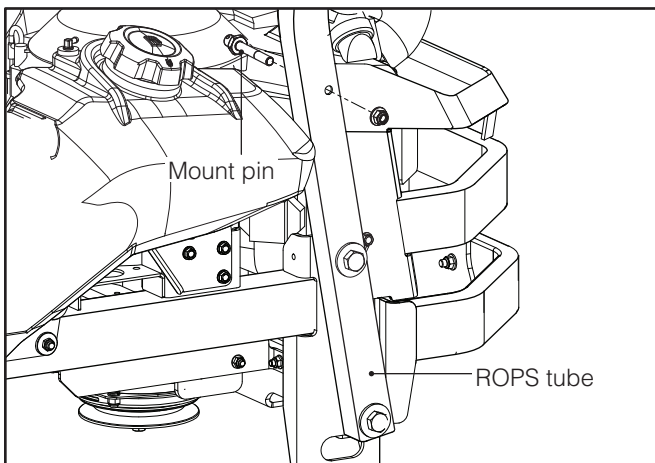
ASSEMBLY

1 INSTALLING REAR MOUNT AND STRAPS

1. Using a $\frac{9}{16}$ " wrench, remove the two bolts from the rear bumper.
2. Hook the collection system hitch over the rear bumper and secure the hitch to the bumper with two hex head flange screws and bolts.
4. Attach the mounting straps to each side of the hopper front. Make sure the angled strap is attached to the side of the hopper near the handle. The straps are reversible and either end can be attached to the brackets.



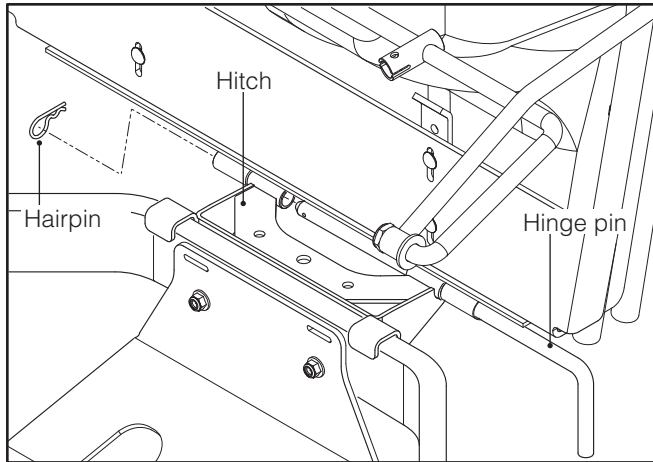
3. Install the mount pins through ROPS tube in predrilled holes approximately 18" up from bottom of ROPS tube. The pin will pass from the inside out, so the threads are on the outside of the tube. Secure each side with nuts and tighten using $\frac{3}{4}$ " and $\frac{9}{16}$ " wrenches.



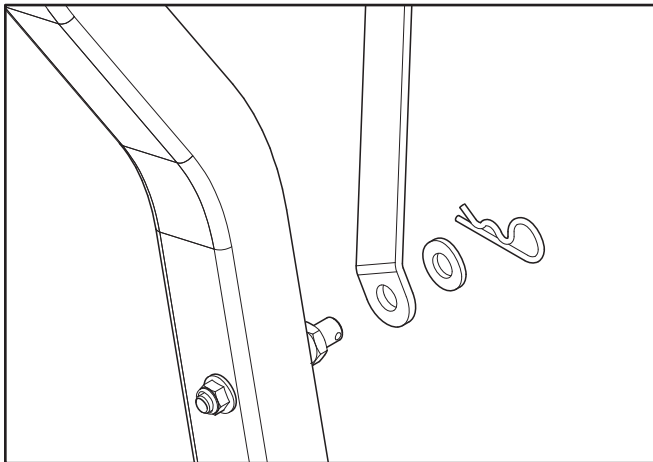
ASSEMBLY

2 ATTACHING THE CLAMSHELL ASSEMBLY

1. Lift the clamshell assembly up to hitch that has been secured to the rear bumper. Align the pin tubes and slide the hinge pin through the hitch and clamshell assembly. Secure on the opposite side with the hairpin.

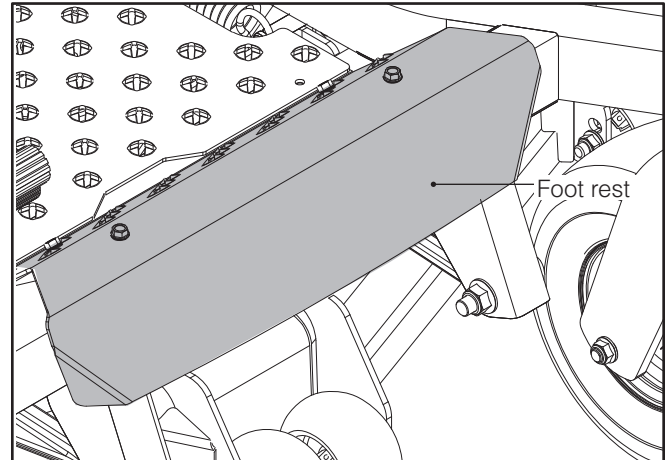


2. Rotate the mounting straps to align with the pins that have been installed on the ROPS tube. Attach the mounting straps to each pin and secure with a washer and hairpin.



3 INSTALLING WEIGHT PLATES

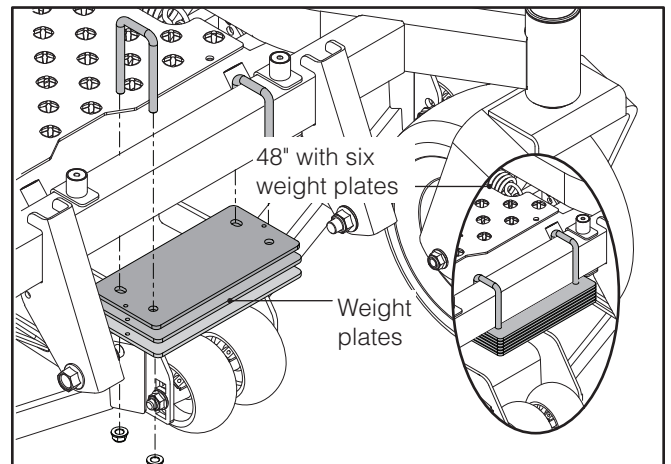
1. Remove the foot rest by removing the four screws holding it to the frame.



2. Attach three weight plates to the underside of the front frame using two U brackets and four 1/2" flanged nuts.

NOTE: On units with a 48" deck only - add the three plates from the drive kit, for a total of six plates.

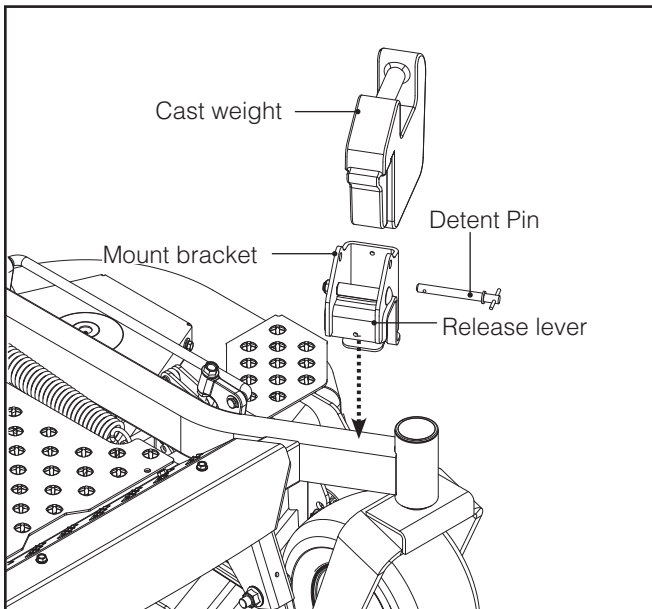
3. Reinstall the foot rest.



ASSEMBLY

4 INSTALLING CAST WEIGHTS

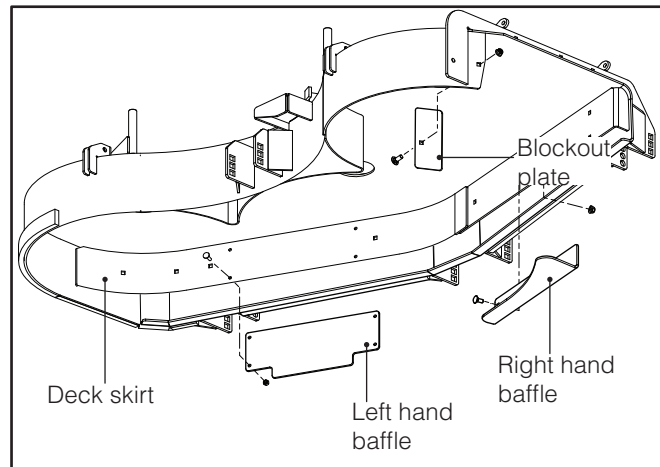
1. Set the mount bracket onto the frame tube just behind the caster pivot.
NOTE: Mount brackets can be placed on either the inboard or outboard side of the frame tube.
2. Press down on the bracket until it is securely snapped into place on the frame.
3. Push the cast weight into mount bracket, locking the release lever against the side of the frame tube.
4. Place the detent pin through the hole in the mount bracket to secure the weight.



5 INSTALLING BLOW OUT BAFFLES

The collection system includes deck baffling designed to help prevent blow out when collecting in extremely dry cutting conditions. If cutting conditions are not extremely dry, baffling may not be required.

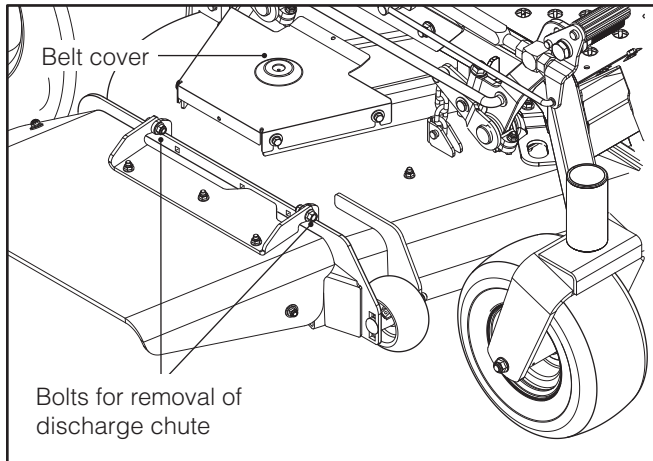
1. Remove the hardware from deck's center baffle.
2. Place the left hand baffle from the kit between the deck skirt and the front edge of deck.
3. Secure the left hand baffle and the center baffle to the deck skirt with four 1" carriage bolts and nuts supplied with the kit, using a $\frac{7}{16}$ " wrench.
4. With a $\frac{1}{2}$ " wrench, install the right hand baffle on blade side of deck skirt and secure with two $\frac{1}{2}$ " carriage bolts and nuts from the kit.
5. Secure the blockout plate to the left hand side of the deck discharge opening with a $\frac{3}{4}$ " bolt and nut.



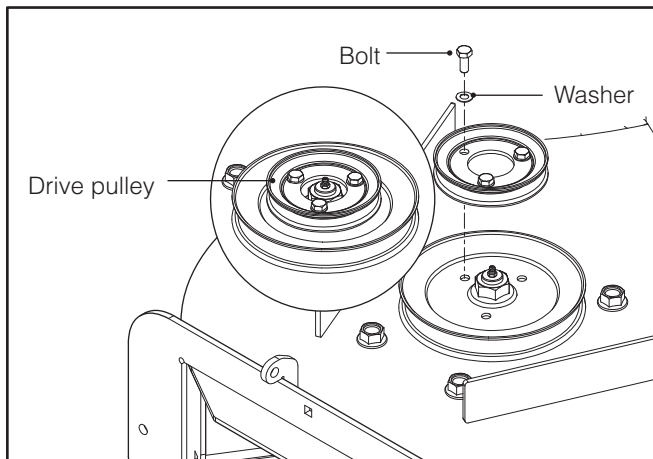
ASSEMBLY

6 INSTALLING DRIVE PULLEY - 48"

1. Using two $\frac{9}{16}$ " wrenches, remove the hardware and discharge chute from the deck.
2. Lower deck to the lowest cutting position.
3. With a $\frac{1}{2}$ " wrench, remove the hardware of the right hand (discharge side) belt cover and remove the shield from the deck.

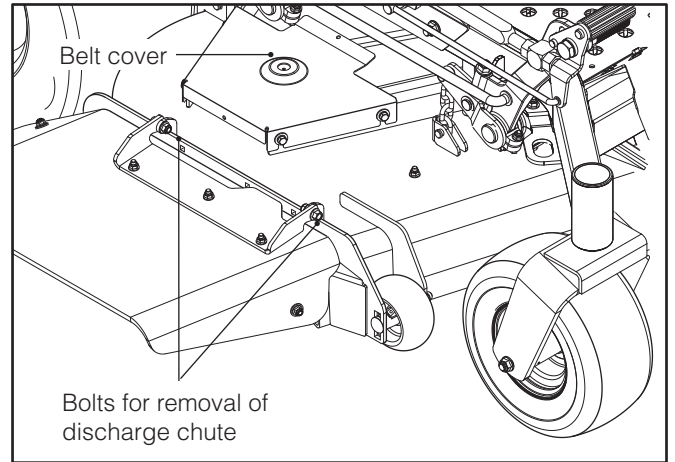


4. Relieve the tension from the deck belt and remove it from the center deck pulley. (See Operator Manual if necessary)
5. Remove the bolts and washers securing the right hand deck pulley to the spindle with a $\frac{1}{2}$ " wrench. Do not remove the pulley.
6. Install new drive pulley on top of the current deck pulley. Use a $\frac{1}{2}$ " wrench to secure the three $\frac{5}{8}$ " bolts and spring washers to the top of the pulley.
7. Reinstall the deck belt.

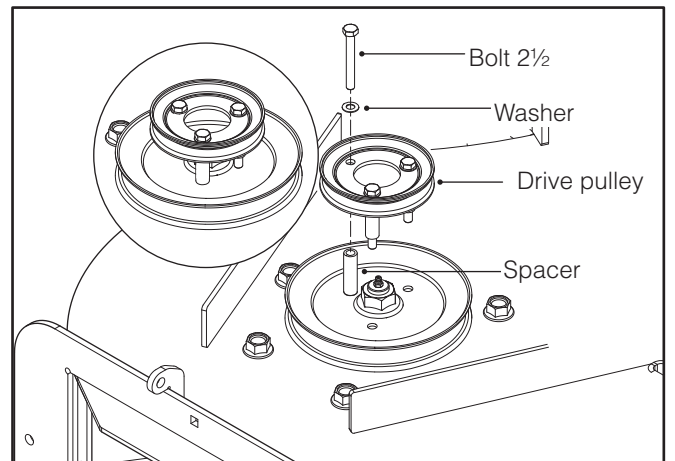


DRIVE PULLEY - 52" and 60"

1. Using two $\frac{9}{16}$ " wrenches, remove the hardware and discharge chute from the deck. (Deck configuration will vary by size.)
2. Lower deck to the lowest cutting position.
3. With a $\frac{1}{2}$ " wrench, remove the hardware of the right hand (discharge side) belt cover and remove the shield from the deck. Retain the hardware for reuse.



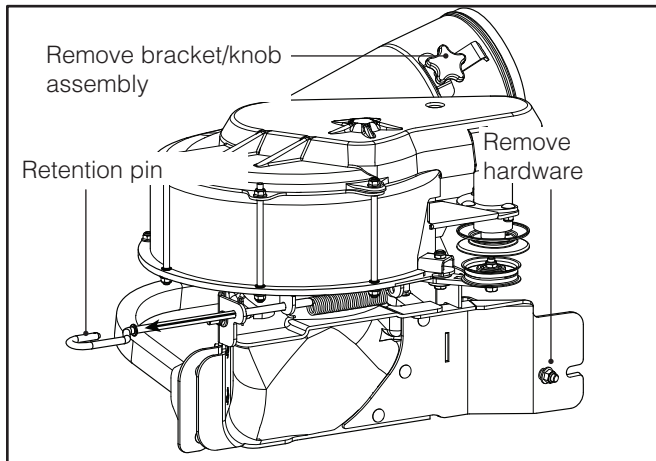
4. Relieve the tension from the deck belt and remove it from the center deck pulley. (See Operator Manual if necessary)
5. Remove the bolts and washers securing the right hand deck pulley to the spindle with a $\frac{1}{2}$ " wrench. Do not remove the pulley.
6. Install new drive pulley on top of the current deck pulley, placing spacers in between. Use a $\frac{1}{2}$ " wrench to secure the three $2\frac{1}{2}$ " bolts and spring washers to the top of the pulley. See illustration.
7. Reinstall the deck belt.



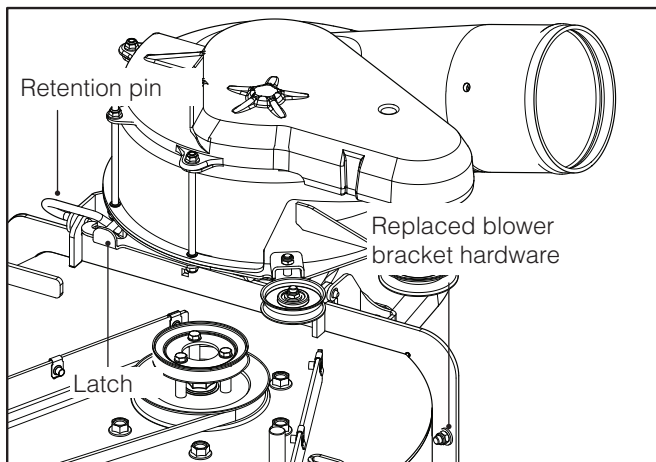
ASSEMBLY

7 MOUNTING BLOWER ASSEMBLY

NOTE: Hose bracket/knob assembly is no longer used. Remove from the blower if necessary.



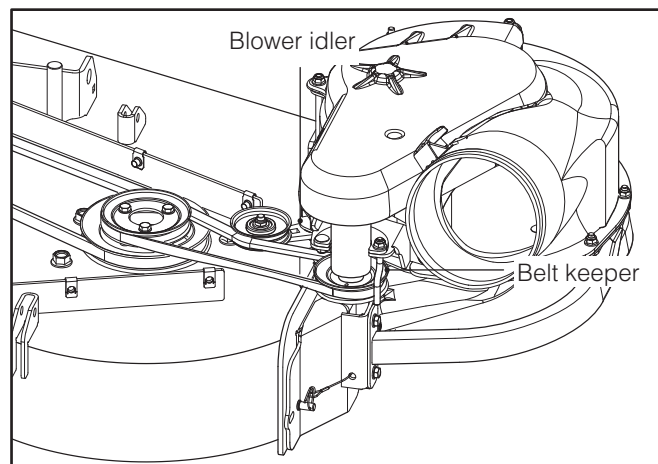
1. At the rear of the blower, remove the bolt, spacer and nut that are secured to the bracket.
2. Reinstall the hardware removed in Step 1 through hole in rear blower deck.



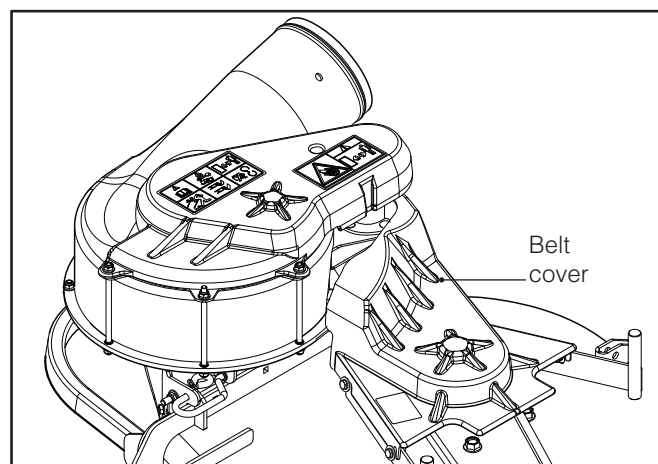
3. Slide the retention pin towards the front of the blower and set the blower on the deck. The deck's discharge mounting tabs will fit between the mount brackets on the blower.
4. Slide the retention pin back towards the rear of the blower, assuring it passes through the discharge mounting tabs on the deck.
5. Rotate the latch to hook over the retention pin.

8 INSTALLING DRIVE BELT and HOSE- 48"

1. Install drive belt around pulley on blower.
NOTE: 48" Deck belt P/N 547 216001, See belt.
2. Rotate belt keeper within $\frac{1}{8}$ " of blower pulley and tighten with $\frac{1}{2}$ " wrench.
3. Rotate blower idler towards front of blower and place belt over deck pulley. Use a breaker bar in the idler opening if necessary. See illustration for correct belt routing.



4. Set drive kit deck belt cover over deck pulleys and reinstall deck shield hardware.

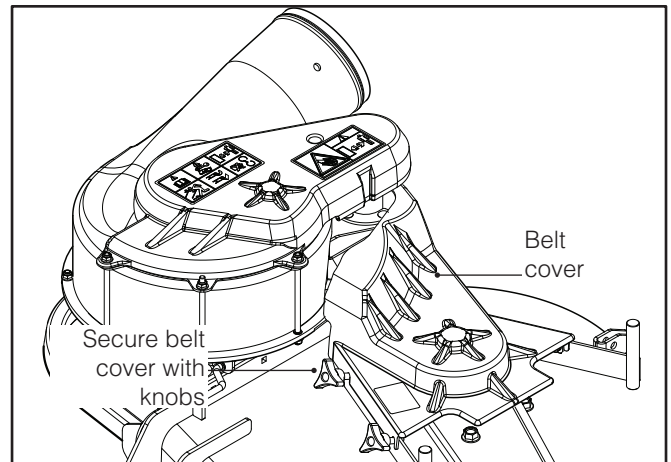
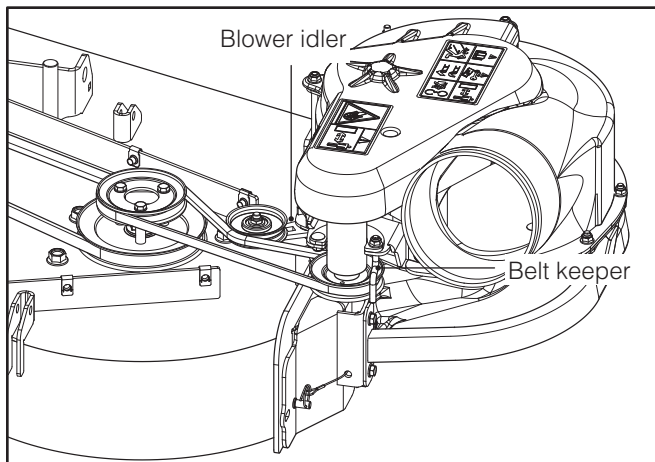


5. Attach the hose to the blower and hopper hood inlet and secure with hose clamps.
6. Check the clearance between the collection hose and the tire to make sure there is no interference. Detach, shorten and reconnect the hose if necessary.
7. Replace the rear mount pin and retainer if removed for belt installation.

ASSEMBLY

DRIVE BELT and HOSE - 54" - 60"

1. Install drive belt around pulley on blower.
*NOTE: 54" Deck belt P/N 539 100439,
60" Deck belt P/N 574 216101. See belt.*
2. Rotate belt keeper within $\frac{1}{8}$ " of blower pulley and tighten with $\frac{1}{2}$ " wrench.
3. Rotate blower idler towards front of blower and place belt over deck pulley. Use a breaker bar in the idler opening if necessary. See illustration for correct belt routing.

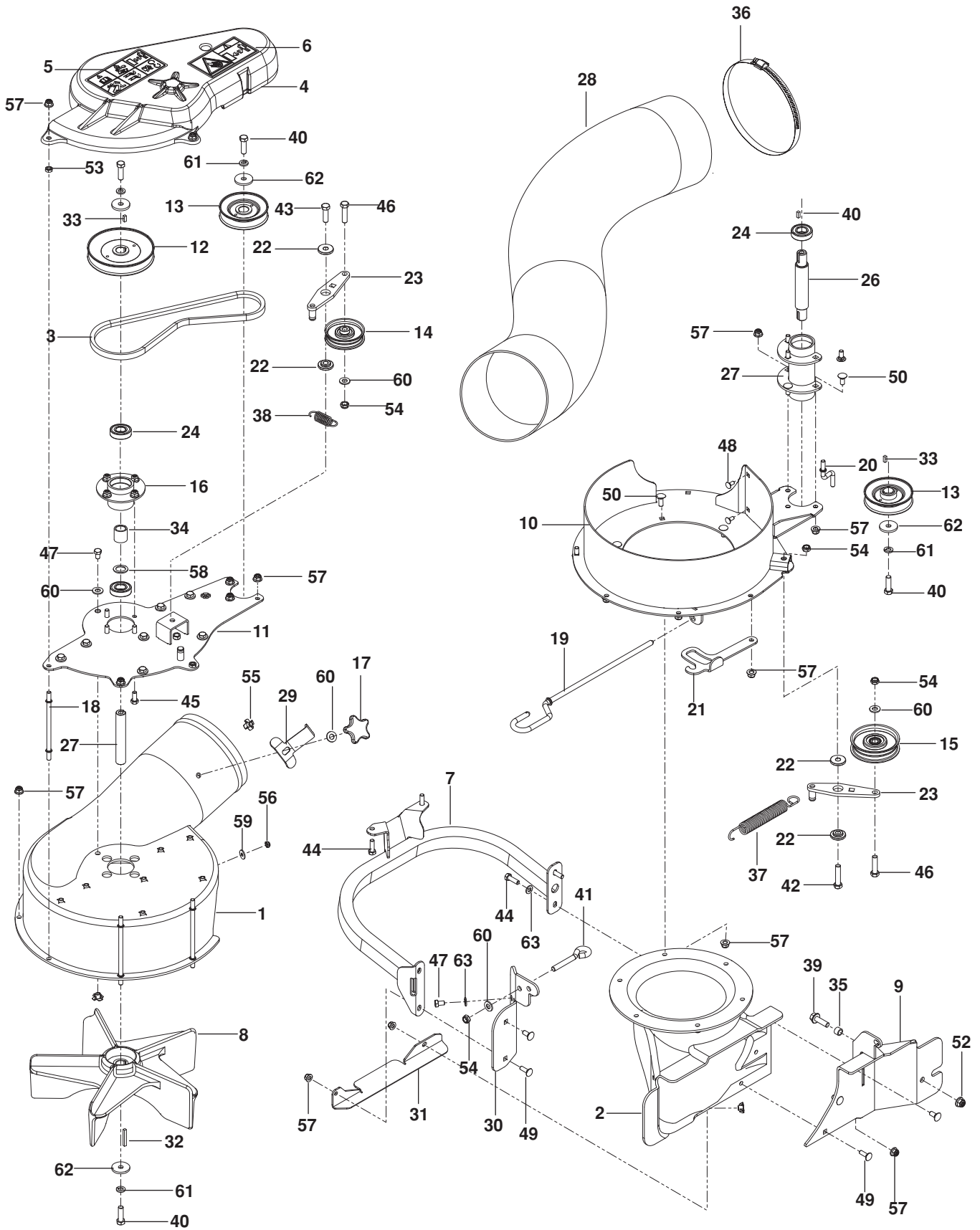


4. Set drive kit deck belt cover over deck pulleys and secure with knobs.

5. Attach the hose to the blower and hopper hood inlet and secure with hose clamps.
6. Check the clearance between the collection hose and the tire to make sure there is no interference. Detach, shorten and reconnect the hose if necessary.
7. Replace the rear mount pin and retainer if removed for belt installation.

REPAIR PARTS

BLOWER



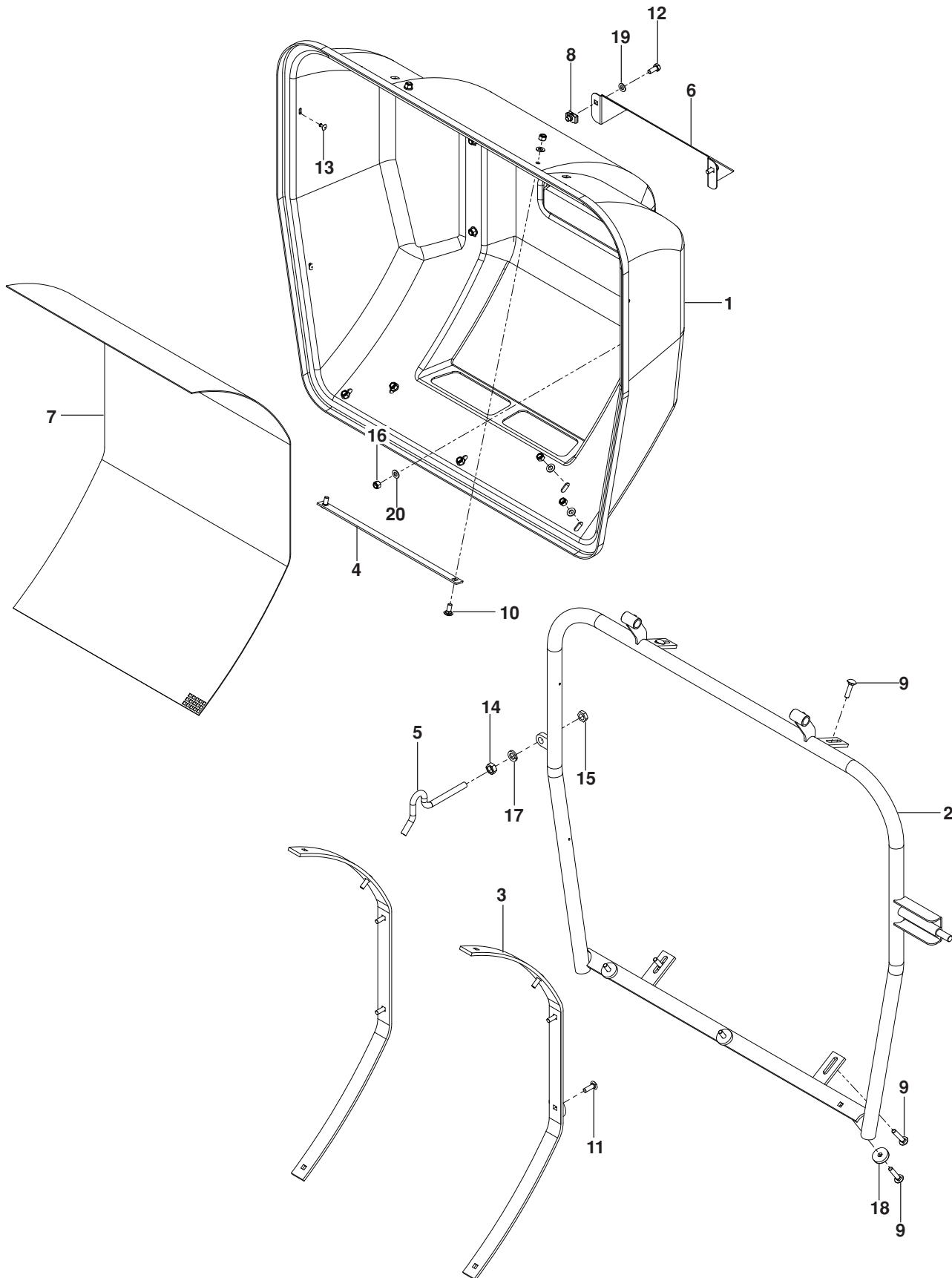
REPAIR PARTS

ITEM	PART NO.	QTY.	DESCRIPTION	ITEM	PART NO.	QTY.	DESCRIPTION
1..	522 594001....	1....	HOUSING, IMPELLER	33..	539 115667....	3....	KEY $\frac{3}{16}$ x $\frac{1}{2}$
2..	522 593301....	1....	HOUSING, BLOWER	34..	539 130323....	1....	SPACER
3..	539 101386....	1....	BELT	35..	579 613301....	1....	SPACER
4..	522 595402....	1....	SHIELD w/ DECALS, BELT	36..	574 386601....	1....	CLAMP, HOSE
5..	539 105785....	1....	DECAL, WARNING	37..	532 196105....	1....	SPRING, DECK DRIVE
6..	539 106741....	1....	DECAL, SEVERING	38..	522 595101....	1....	SPRING, IDLER
7..	522 596202....	1....	GUARD	39..	525 834201....	1....	HHFS $\frac{3}{8}$ -16 x $1\frac{1}{4}$
8..	575 488401....	1....	IMPELLER	40..	539 110321....	4....	BOLT $\frac{3}{8}$ -24 x $1\frac{1}{4}$ HEX GR 8
9..	580 279402....	1....	MOUNT, REAR, BLK	41..	539 107484....	1....	EYE BOLT
10..	581 009802....	1....	RING, BLOWER	42..	539 976949....	1....	HCS $\frac{3}{8}$ -16 x $1\frac{3}{4}$
11..	522 594402....	1....	PLATE, TOP	43..	539 976941....	1....	HCS $\frac{3}{8}$ -16 x $1\frac{1}{4}$
12..	539 130324....	1....	PULLEY	44..	539 990209....	4....	HCS $\frac{5}{16}$ -18 x 1
13..	522 594601....	2....	PULLEY, DRIVE	45..	539 976934....	4....	HCS $\frac{5}{16}$ -18 x $\frac{3}{4}$
14..	539 106721....	2....	PULLEY, IDLER	46..	539 990655....	2....	HCS $\frac{3}{8}$ -16 x $1\frac{1}{2}$
15..	579 604601....	1....	PULLEY, IDLER	47..	539 130315..	10....	HCS $\frac{5}{16}$ -18 x $\frac{1}{2}$
16..	539 130295....	1....	HUB	48..	539 111786....	2....	RHSNB $\frac{1}{4}$ -20 x $\frac{5}{8}$
17..	574 039301....	1....	KNOB $\frac{5}{16}$ -18 x $\frac{1}{2}$	49..	539 990208....	2....	RHSNB $\frac{5}{16}$ -18 x 1
18..	522 595301....	3....	PIN, RETENTION	50..	539 990316..	17....	RHSNB $\frac{5}{16}$ -18 x $\frac{3}{4}$
19..	522 596501....	1....	PIN, MOUNT	51..	539 111786....	2....	RHSNB $\frac{1}{4}$ -20 x $\frac{5}{8}$
20..	522 595201....	1....	KEEPER, BELT	52..	521 996501....	1....	NUT $\frac{3}{8}$ -16 HEX FLG NYLOC
21..	575 472002....	1....	LATCH	53..	539 107897....	2....	NUT $\frac{5}{16}$ -18 HEX JAM
22..	539 132161....	4....	BUSHING, BRAKE	54..	539 200282....	5....	NUT $\frac{3}{8}$ -16 HEX JAM NYLOC
23..	522 594802....	2....	ARM, IDLER	55..	539 130313..	11....	NUT $\frac{5}{16}$ -18 TEE
24..	539 130296....	4....	BEARING	56..	539 108120....	2....	NUT $\frac{1}{4}$ -20 HEX THIN NYLOC
25..	522 594901....	1....	SHAFT, SPINDLE	57..	539 112899..	34....	NUT $\frac{5}{16}$ -18 HEX FLG NYLOC
26..	539 130316....	1....	SHAFT, IMPELLER	58..	539 910935....	1....	WASHER
27..	522 595001....	1....	TUBE, SPINDLE	59..	539 990598....	2....	WASHER $\frac{1}{4}$ FLAT
28..	578 257901....	1....	HOSE	60..	539 990122..	12....	WASHER $\frac{3}{8}$ SAE FLT
29..	573 989702....	1....	BRACKET, RETAINER	61..	539 990118....	4....	WASHER $\frac{3}{8}$ SPLT LOCK
30..	522 595502....	1....	BRACKET, MOUNT, FT	62..	539 110323....	4....	WASHER, HARDENED
31..	575 699602....	1....	BRACKET, DIVERTER BLK	63..	539 990188....	4....	WASHER $\frac{5}{16}$ SAE FLAT
32..	539 125229....	1....	KEY $\frac{3}{16}$ x $1\frac{1}{2}$ SQ				

NOTE: ALL FASTENERS ARE GRADE 5 UNLESS OTHERWISE SPECIFIED.

REPAIR PARTS

CLAMSHELL REAR



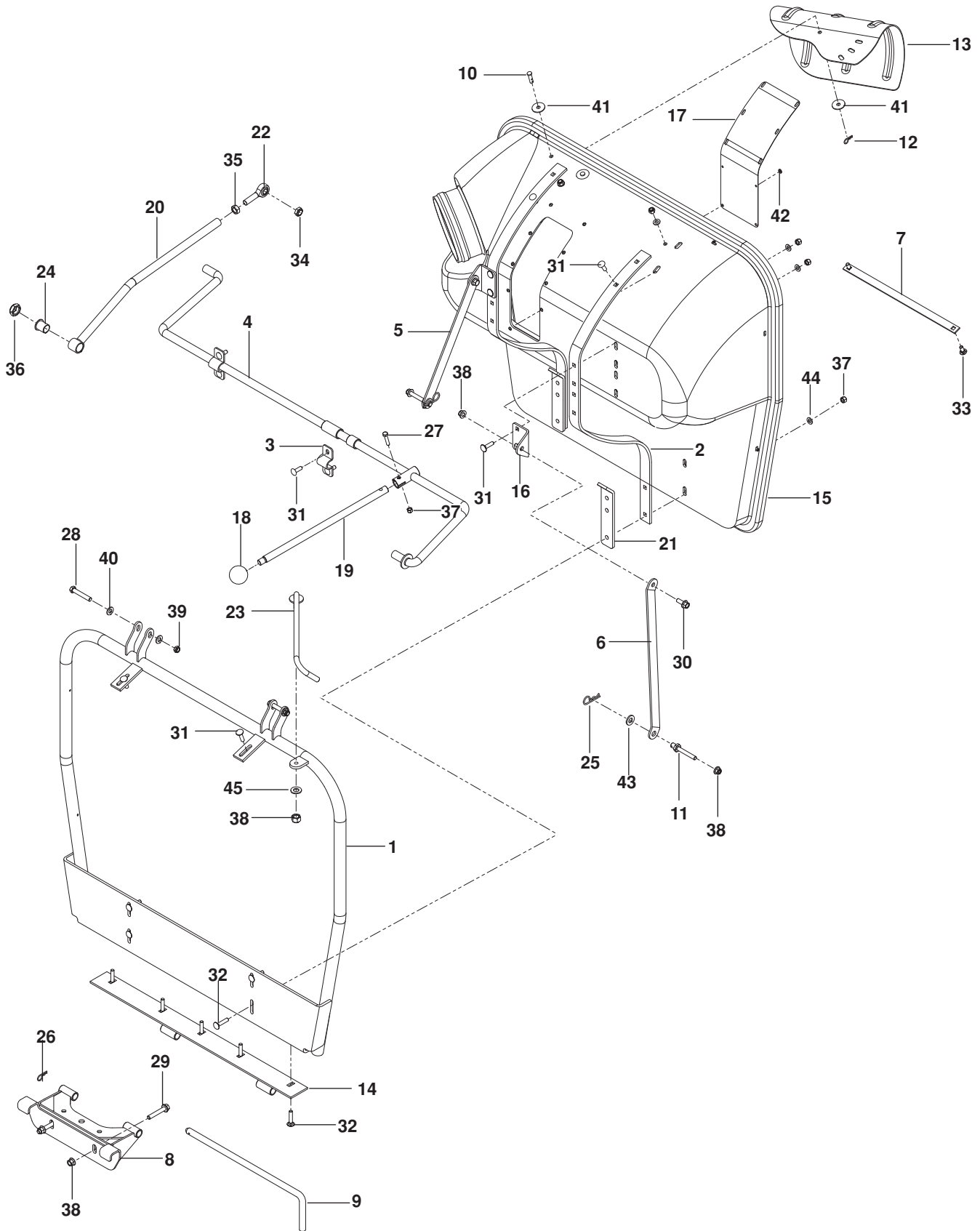
REPAIR PARTS

ITEM	PART NO.	QTY.	DESCRIPTION	ITEM	PART NO.	QTY.	DESCRIPTION
1..	539 119377....	1....	CLAMSHELL BACK	11..	539 107271....	6....	RHSSNB $\frac{5}{16}$ 18 x 1
2..	539 117987....	1....	FRAME, REAR	12..	539 990206....	2....	HCS $\frac{5}{16}$ -18 x $\frac{3}{4}$
3..	539 119396....	2....	STRAP	13..	539 119413....	6....	RIVET
4..	539 119458....	1....	STRAP	14..	539 115609....	1....	NUT $\frac{1}{2}$ -13 THIN NYLOC
5..	539 119367....	1....	HOOK LATCH	15..	539 990625....	1....	NUT $\frac{1}{2}$ -13 HEX JAM
6..	539 117543....	1....	VENT, CLAMSHELL	16..	539 990717..	15....	NUT $\frac{5}{16}$ -18 NYLOC
7..	581 532901....	1....	SCREEN, VENT	17..	539 990254....	1....	WASHER $\frac{1}{2}$ LOCK
8..	539 115677....	2....	RETAINER, U TYPE	18..	539 115789....	3....	WASHER, NYLON
9..	539 100472....	7....	RHSNB $\frac{5}{16}$ -18 x $1\frac{1}{4}$	19..	539 990188....	2....	WASHER $\frac{5}{16}$ SAE
10..	539 990316....	2....	RHSNB $\frac{5}{16}$ -18 x $\frac{3}{4}$	20..	539 990692..	15....	WASHER $\frac{5}{16}$ STD

NOTE: ALL FASTENERS ARE GRADE 5 UNLESS OTHERWISE SPECIFIED.

REPAIR PARTS

CLAMSHELL FRONT



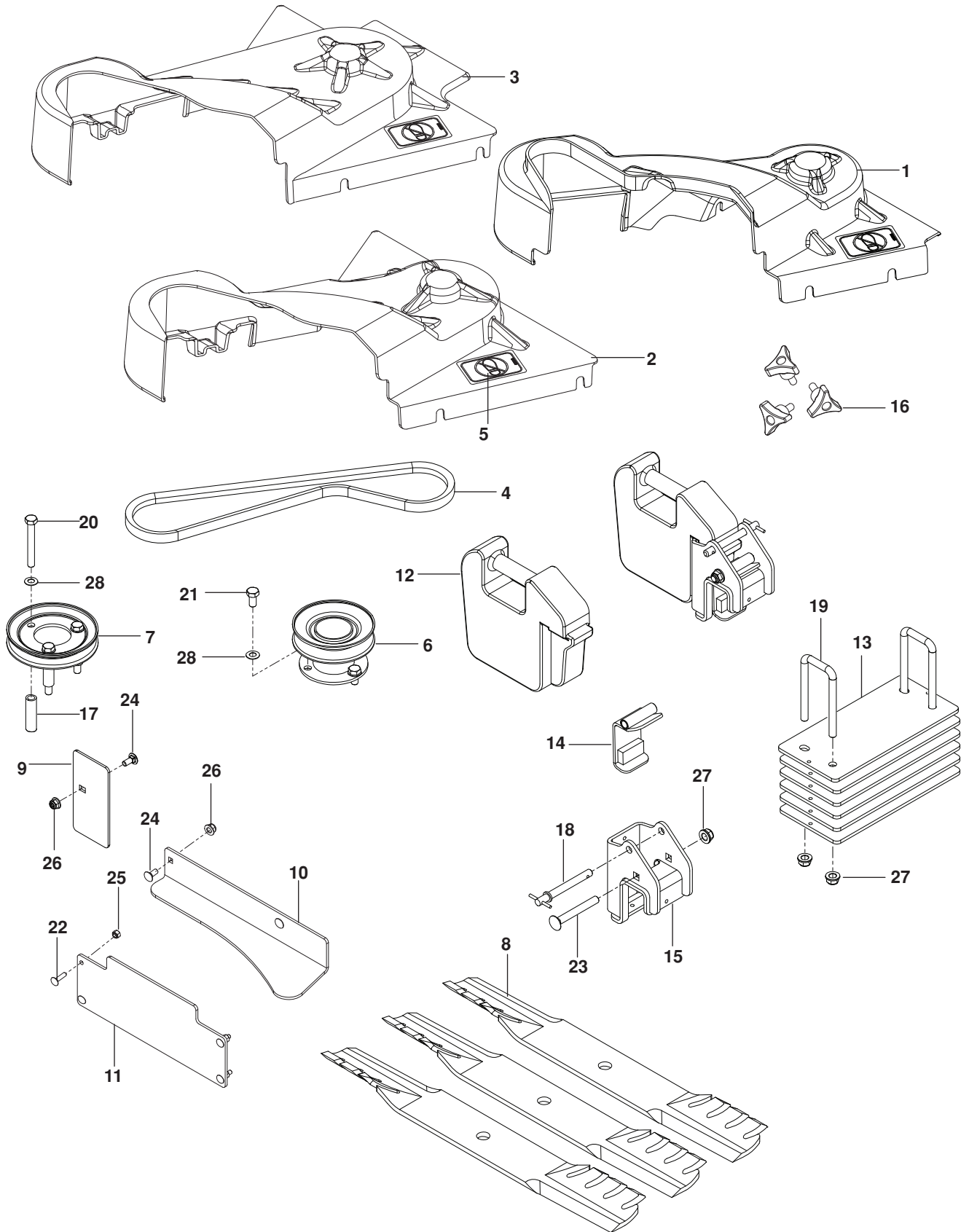
REPAIR PARTS

ITEM	PART NO.	QTY.	DESCRIPTION	ITEM	PART NO.	QTY.	DESCRIPTION
1..	539 119410....	1....	FRONT FRAME	24..	539 115972....	2....	BUSHING
2..	539 119409....	2....	STRAP	25..	539 976989....	2....	HAIRPIN 2½
3..	539 119368....	2....	STRAP	26..	539 115501....	1....	HAIRPIN 1¾
4..	580 980001....	1....	SHAFT, LIFT	27..	539 976935....	1....	HCS 5/16-18 x 1½
5..	580 979502....	1....	STRAP, MOUNTING, LT BLK	28..	539 990629....	2....	HCS 3/8-18 x 2¼
6..	580 979602....	1....	STRAP, MOUNTING, RT BLK	29..	577 098301....	2....	HHFS 3/8-16 x 2¼ GR 8
7..	539 119458....	1....	STRAP	30..	525 612801....	2....	HHFS 3/8-16 x 1
8..	580 979102....	1....	HITCH, BLK	31..	539 100472..	12....	RHSNB 5/16-18 x 1¼
9..	539 119372....	1....	PIN, HINGE	32..	539 102933....	9....	RHSNB 5/16-18 x 1½
10..	539 115596....	2....	PIN 5/16 CLEVIS	33..	539 990316....	2....	RHSNB 5/16-18 x ¾
11..	525 445001....	2....	PIN, MOUNT	34..	539 108010....	1....	NUT ½-13 THIN NYLOC
12..	532 004939....	2....	PIN, RETAINER	35..	539 108763....	1....	NUT ½-20 JAM
13..	539 119433....	1....	DEFLECTOR	36..	522 842601....	1....	NUT ¾-16 THIN NYLOC
14..	539 114779....	1....	MOUNT, LOWER	37..	539 990717..	23....	NUT 5/16-18 NYLOC
15..	580 978301....	1....	CLAMSHELL, FRONT	38..	521 996501....	6....	NUT 3/8-16 HEX FLG NYLOC
16..	580 979702....	2....	BRACKET, MOUNTING	39..	539 200282....	2....	NUT 3/8-16 HEX JAM NYLOC
17..	539 115441....	1....	WINDOW	40..	539 990122....	4....	WASHER 3/8 SAE FLT
18..	580 980601....	1....	KNOB, BLK	41..	539 115495....	4....	WASHER 11/32
19..	580 980501....	1....	ARM, DUMP	42..	539 110033..	10....	WASHER
20..	539 114816....	1....	ARM, LIFT	43..	539 990250....	2....	WASHER, SAE
21..	539 117988....	2....	PLATE, SPACER	44..	539 990692..	23....	WASHER 5/16 STD
22..	539 117244....	1....	ROD END	45..	539 990188....	1....	WASHER 5/16 SAE
23..	539 114816....	1....	LINKAGE, LATCH				

NOTE: ALL FASTENERS ARE GRADE 5 UNLESS OTHERWISE SPECIFIED.

REPAIR PARTS

WEIGHTS, BAFFLES, SHIELDS



REPAIR PARTS

ITEM	PART NO.	QTY.	DESCRIPTION	ITEM	PART NO.	QTY.	DESCRIPTION
1..	581 176501....	1....	SHIELD, BELT, 48"	13..	575 880501....	6....	WEIGHT PLATE
2..	522 595802....	1....	SHIELD, BELT, 54"	14..	575 509501....	2....	LATCH
3..	522 595801....	1....	SHIELD, BELT, 60"	15..	575 509802....	2....	BRACKET, WEIGHT, BLK
4..	574 216001....	1....	BELT, BLOWER 48"	16..	539 104411....	3....	KNOB w/STUD
	539 100439 ...	1....	BELT, BLOWER 54"	17..	573 982701....	3....	SPACER
	574 216101 ...	1....	BELT, BLOWER 60"	18..	575 509901....	2....	PIN, DETENT
5..	539 105743....	1....	DECAL, NO STEP	19..	575 880601....	2....	BOLT, U
6..	522 594503....	1....	PULLEY, DRIVE 48"	20..	539 108392....	3....	HCS $\frac{5}{16}$ -18 x 2 $\frac{1}{2}$
7..	522 594502....	1....	PULLEY, DRIVE 54"	21..	539 108392....	3....	HCS $\frac{5}{16}$ -18 x $\frac{5}{8}$
	522 594501 ...	1....	PULLEY, DRIVE 60"	22..	539 109800....	4....	RHSNB $\frac{1}{4}$ -20 x 1
8..	525 525901....	3....	BLADE, GATOR 54"	23..	539 108484....	2....	RHSNB $\frac{1}{2}$ -13 x 4
	522 936601 ...	3....	BLADE, GATOR 60"	24..	539 990316....	3....	RHSNB $\frac{5}{16}$ -18 x $\frac{3}{4}$
9..	525 798701....	1....	PLATE, BLOCK OFF	25..	539 976978....	4....	NUT $\frac{1}{4}$ -20 HEX NYLOC
10..	575 594102....	1....	BAFFLE, RT	26..	539 112899....	3....	NUT $\frac{5}{16}$ -18 HEX FLG NYLOC
11..	575 593602....	1....	BAFFLE, LT	27..	521 991101....	6....	NUT $\frac{1}{2}$ -13 HEX FLG NYLOC
12..	539 092531....	2....	WEIGHT CAST, FRONT	28..	539 109600....	3....	WASHER $\frac{5}{16}$ DISC SPRING

NOTE: ALL FASTENERS ARE GRADE 5 UNLESS OTHERWISE SPECIFIED.

MAINTENANCE

Hose Care

- Inspect hoses before each use. If hoses have excessive wear, tears, or punctures, replace immediately.
- To prolong the life of the hose, periodically rotate hose and turn hose end to end. Refer to Preventative Maintenance Schedule in this manual.
- Avoid twists and sharp turns in the hoses, as they will increase wear on the hoses.
- Avoid dragging the lower hose along the sides of buildings or other hard surfaces.

Poly Mesh Care

The poly mesh on the collection system is located inside the container hood. For best results, clean poly mesh regularly.

1. Shut off engine.
2. Release the two (2) rubber latches under the rear of the hood. Open hood and brush debris off of both sides.
3. Close hood and re-latch.

DO NOT USE THE COLLECTION SYSTEM WITHOUT POLY MESH SECURELY IN PLACE.

Cleaning and Washing

Regular cleaning, washing, and lubricating will prolong the service of the machine. Covered or indoor storage is recommended.

NOTE: Use care with power washers to avoid damage to decals. Limit direct spray on these items.

DO NOT EXCEED 1000 PSI WATER PRESSURE FOR CLEANING.

Preventative Maintenance Schedule

Item	Before Each Use	Every 5 Hours	Every 25 Hours	Every 50 Hours
Inspect/Clean Poly Mesh		X		
Check/Tighten Nuts and Bolts	X			
Check/Tighten Hoses	X			
Turn Hose End to End			X	
Rotate Hose				X
Clean Machine				X

Troubleshooting Guide

Problem	Possible Cause
Loss of Vacuum	Hose or hood inlet clogged
	Container full
	Poly mesh plugged
Unusual vibration or noise	Solid object jammed in unit
	Loose or missing bolts
Unit difficult to close	Obstructions keeping door from closing completely
	Hood hinge bolts are too tight

