

# Repair Parts Manual Manual De Repuestos

GT54LS / 96043015700

Please read the operator's manual carefully and make sure you understand the instructions before using the machine.

Por favor lea cuidadosamente y comprenda estas intrucciones antes de usar esta maquina.



English/Spanish

581 77 64-27 Rev. 1



# HOW TO USE THIS MANUAL

This manual is designed to provide the customer with a means to identify the parts on his/her tractor when ordering repair parts. The illustrations may or may not represent the actual assemblies; therefore, it is not recommended to use this manual as a guide to assemble or disassemble the tractor. Some hardware and parts are drawn larger in order to more readily identify them.

Each tractor has its own model number.

The model number for your tractor can be found on the fender under the seat.

When ordering parts, always give the following information:

- Product - "TRACTOR"
- MODEL NUMBER - "GT54LS" (96043015700)"
- Part Number
- Part Description

## TABLE OF CONTENTS

|                 |       |
|-----------------|-------|
| SCHEMATIC ..... | 3     |
| ELECTRICAL..... | 4-5   |
| CHASSIS .....   | 6-7   |
| DRIVE.....      | 8-9   |
| ENGINE.....     | 10-11 |
| STEERING .....  | 12-13 |
| MOWER DECK..... | 14-15 |
| MOWER LIFT..... | 16    |
| SEAT .....      | 17    |
| DECALS.....     | 18    |

## COMO UTILIZAR ESTE MANUAL

Este manual está diseñado para brindarle al comprador un medio para identificar las piezas del tractor para cuando necesite hacer el pedido de un repuesto. Las ilustraciones pueden o no representar los ensambles reales; por lo tanto, no se recomienda utilizar este manual como una guía para ensamblar o desarmar el tractor. Algunos accesorios y piezas están dibujados en tamaños más grandes para identificarlos con mayor facilidad.

Cada tractor tiene su propio número de modelo.

El número de modelo del tractor se encuentra en el guardabarros debajo del asiento.

Cuando haga el pedido de una pieza, siempre brinde la siguiente información:

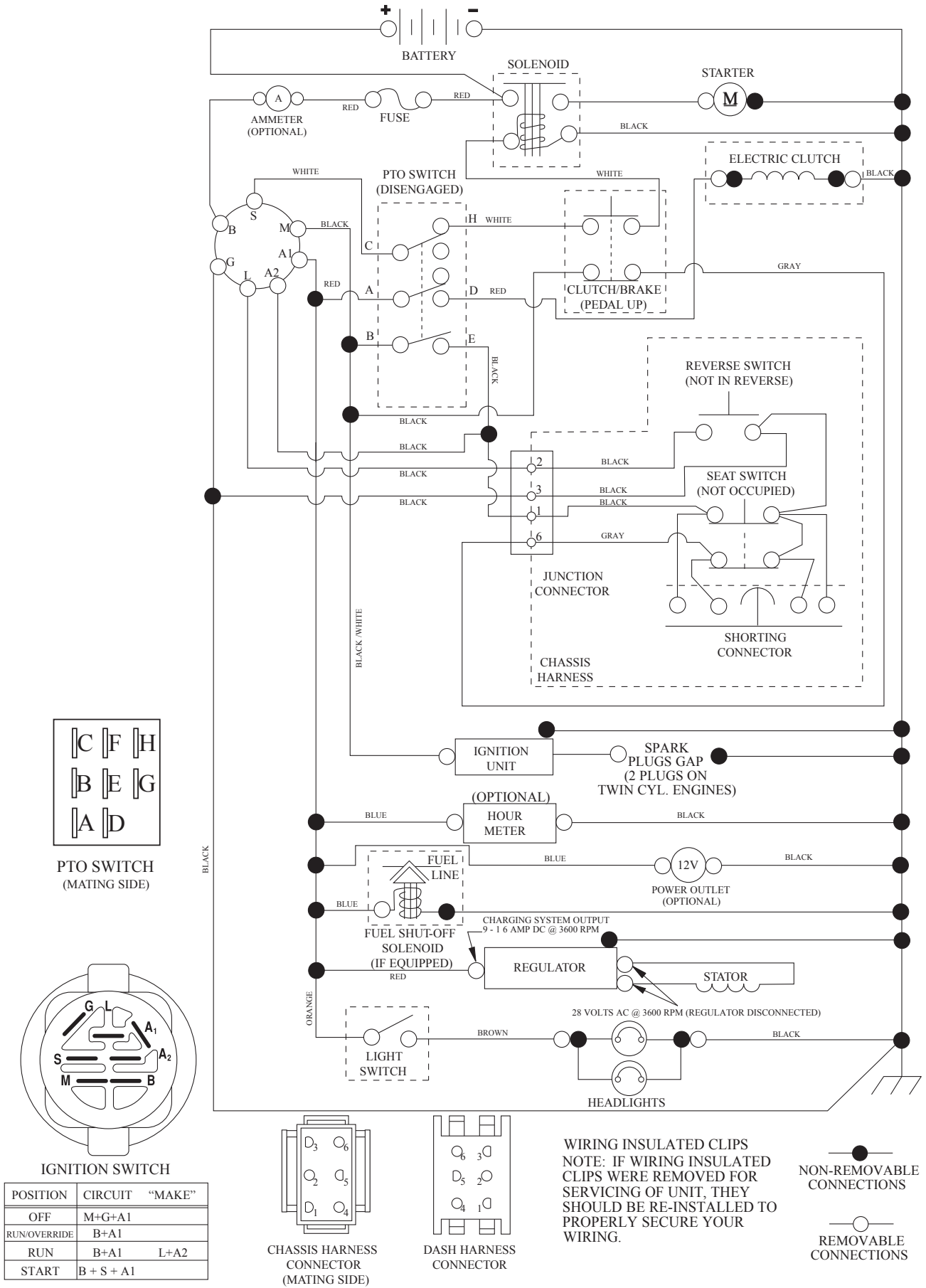
- Producto: "TRACTOR"
- NÚMERO DE MODELO: "GT54LS" (96043015700)"
- Número de pieza
- Descripción de la pieza

## ÍNDICE

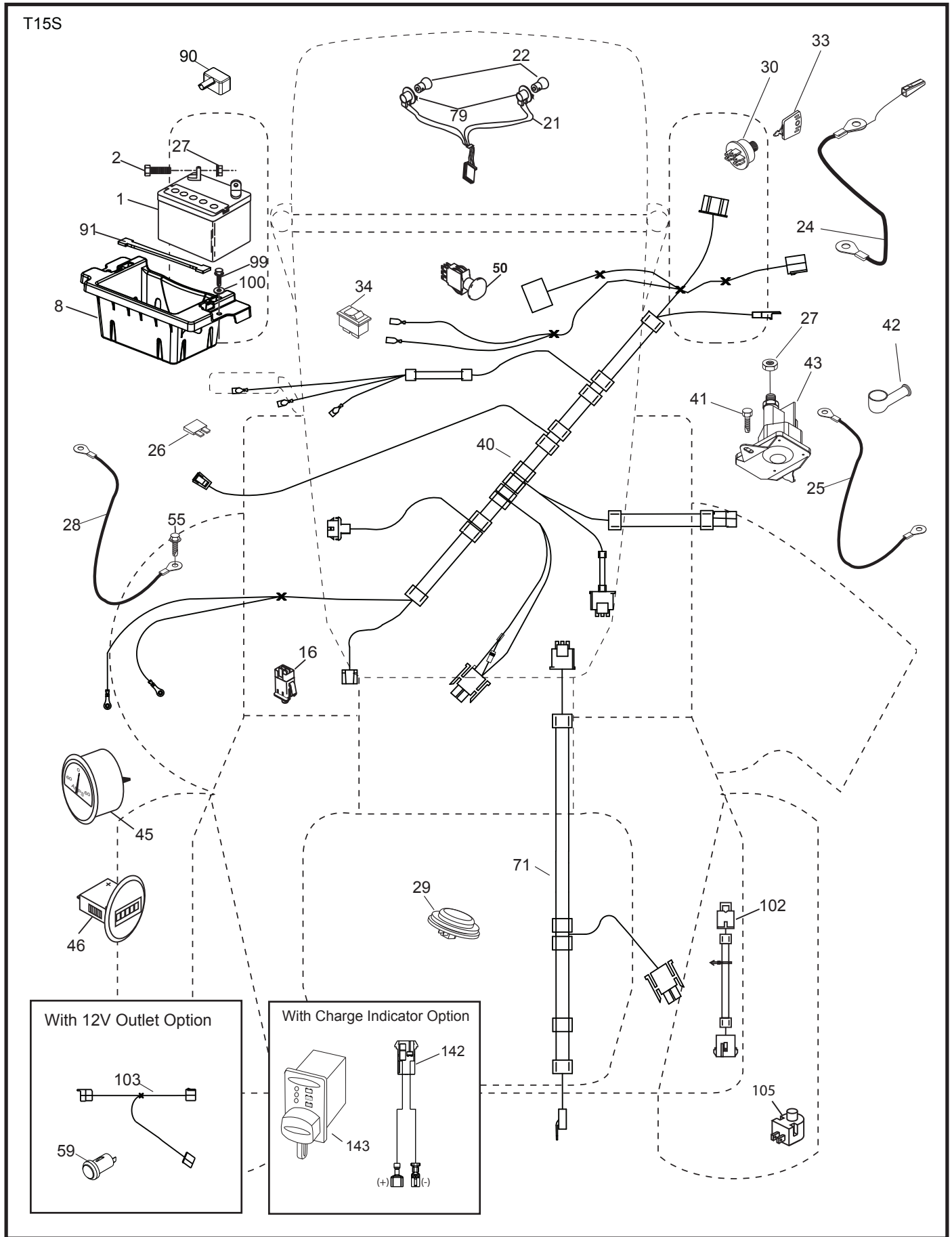
|   |       |
|---|-------|
| DIAGRAMA.....                             | 19    |
| DIAGRAMA ELÉCTRICO .....                  | 20-21 |
| CHASIS .....                              | 22-23 |
| TRANSMISIÓN .....                         | 24-25 |
| MOTOR .....                               | 26-27 |
| DIRECCIÓN .....                           | 28-29 |
| PLATAFORMA DE LA CORTADORA DE CÉSPED..... | 30-31 |
| ELEVACIÓN DE LA CORTADORA DE CÉSPED.....  | 32    |
| ASIENTO.....                              | 33    |
| CALCOMANÍAS.....                          | 34    |

# TRACTOR - MODEL NO. GT54LS (96043015700), PROD. NO. 960 43 01-57 SCHEMATIC

SCH12



**TRACTOR - MODEL NO. GT54LS (96043015700), PROD. NO. 960 43 01-57  
ELECTRICAL**

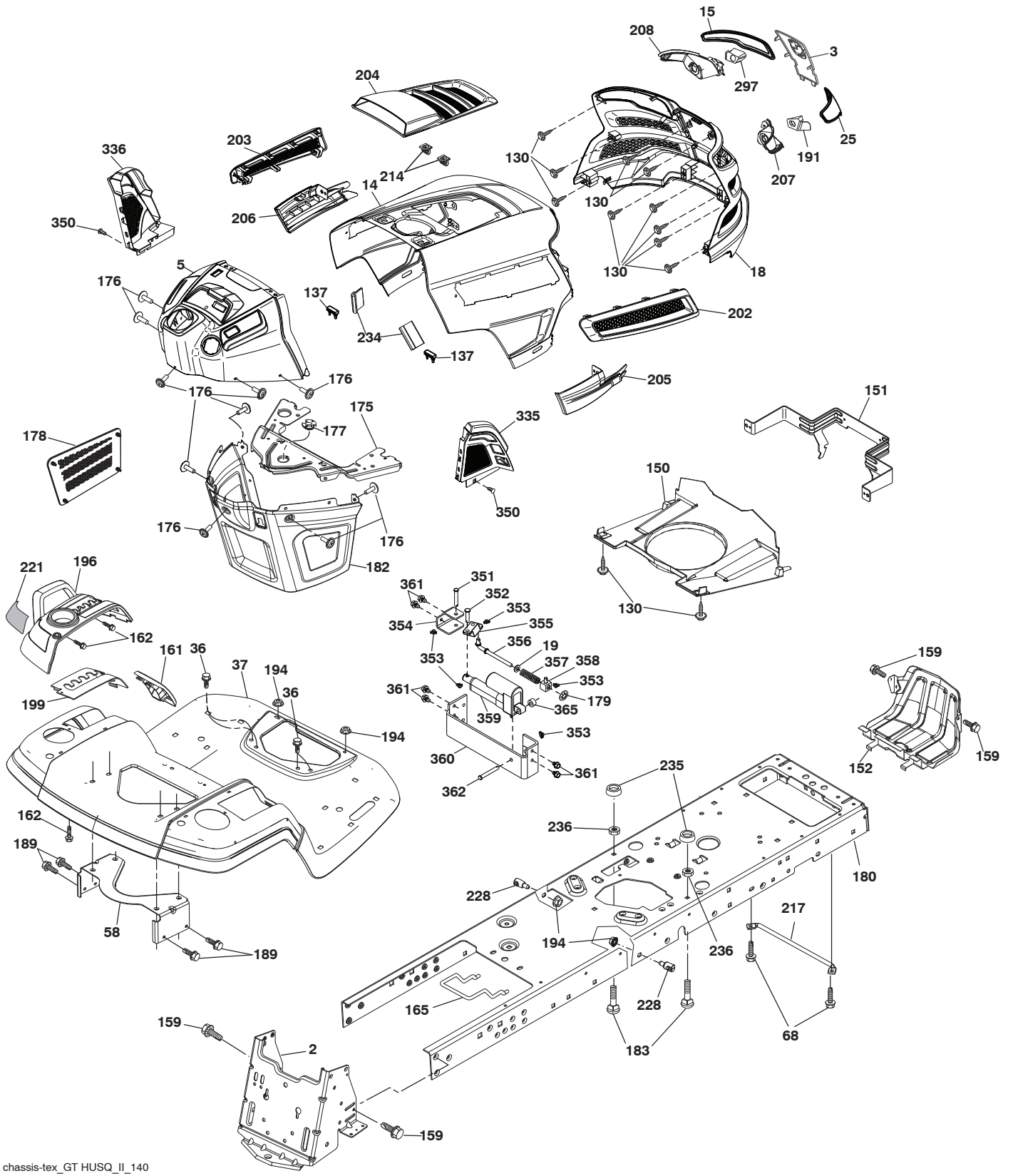


**TRACTOR - MODEL NO. GT54LS (96043015700), PROD. NO. 960 43 01-57  
ELECTRICAL**

| <b>KEY NO.</b> | <b>PART NO.</b> | <b>DESCRIPTION</b>               |
|----------------|-----------------|----------------------------------|
| 1              | 532 16 34-65    | Battery                          |
| 2              | 874 76 04-12    | Bolt Hex Head 1/4-20 x 3/4       |
| 8              | 532 18 64-91    | Box Battery                      |
| 16             | 532 17 61-38    | Switch Interlock Push-In         |
| 21             | 532 40 02-52    | Harness Socket Light w/4152J     |
| 22             | 532 00 41-52    | Bulb Light                       |
| 24             | 532 40 02-53    | Cable Battery 8"                 |
| 25             | 532 41 28-95    | Cable Starter                    |
| 26             | 532 17 51-58    | Fuse                             |
| 27             | 873 51 04-00    | Nut Keps Hex 1/4-20 unc          |
| 28             | 532 14 54-91    | Cable, Ground                    |
| 29             | 532 40 15-45    | Switch, Seat                     |
| 30             | 532 19 33-50    | Switch, Ign                      |
| 33             | 532 41 19-33    | Key/Chain                        |
| 34             | 532 11 07-12    | Switch Light / Reset             |
| 40             | 581 68 63-02    | Harness Ign. Dash                |
| 41             | 817 72 04-08    | Screw Thd Cut 1/4-20 x 1/2       |
| 42             | 532 13 15-63    | Cover, Terminal                  |
| 43             | 532 19 25-07    | Solenoid                         |
| 45             | 532 42 52-70    | Ammeter Gauge Round Snap-In      |
| 46             | 532 42 52-71    | Gauge Hrmtr                      |
| 50             | 532 17 46-51    | Switch PTO                       |
| 55             | 817 06 05-12    | Screw Thdrol 5/16-18 x 3/4 TYTT  |
| 59             | 532 40 03-03    | Outlet 12-Volt                   |
| 71             | 580 51 30-01    | Harness Ign. Chassis             |
| 79             | 532 17 52-42    | Socket Asm Bulb Twistlock        |
| 90             | 532 43 53-95    | Cover Terminal                   |
| 91             | 532 19 02-70    | Strap Battery Mount Front        |
| 99             | 817 67 04-12    | Screw Hexwsh Thdrol 1/4-20 x 3/4 |
| 100            | 819 09 14-16    | Washer 9/32 x 7/8 x 16 Ga.       |
| 102            | 532 40 44-54    | Harness Pigtail K46 Tex ROS      |
| 103            | 532 42 17-47    | Harness 12-Volt Pigtail          |
| 105            | 532 40 75-68    | Switch Reverse                   |
| 142            | 532 44 80-57    | Harness Charge Port              |
| 143            | 580 36 64-01    | Switch On/On DPDT                |

**NOTE:** All component dimensions given in U.S. inches  
1 inch = 25.4 mm

**TRACTOR - MODEL NO. GT54LS (96043015700), PROD. NO. 960 43 01-57**  
**CHASSIS**



chassis-tex\_GT HUSQ\_II\_140

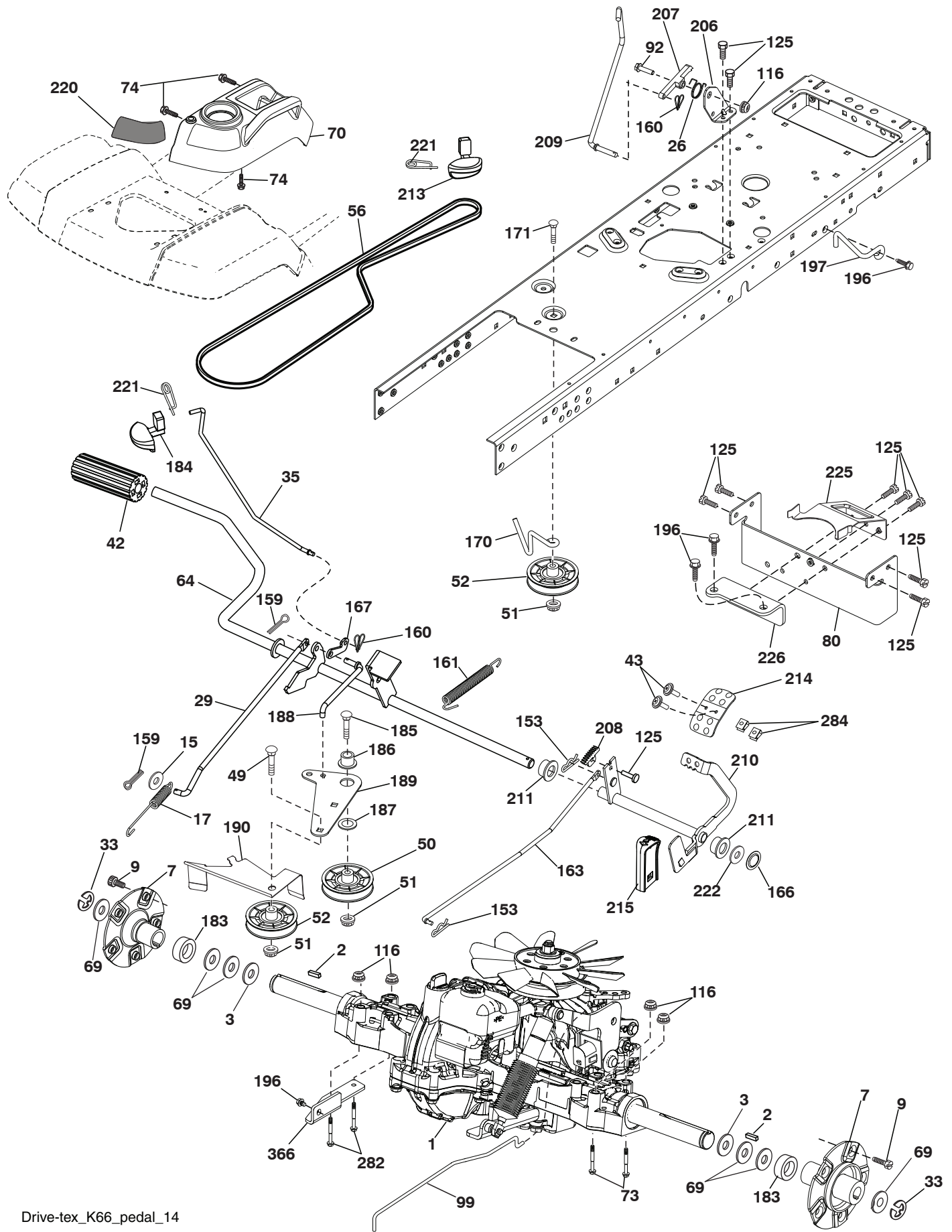
**TRACTOR - MODEL NO. GT54LS (96043015700), PROD. NO. 960 43 01-57  
CHASSIS**

| KEY NO. | PART NO.     | DESCRIPTION                   |
|---------|--------------|-------------------------------|
| 2       | 580 43 44-01 | Drawbar                       |
| 3       | 532 44 44-81 | Applique Husq.                |
| 5       | 581 67 42-01 | Dash                          |
| 14      | 532 44 11-77 | Hood                          |
| 15      | 532 43 97-33 | Lens LH                       |
| 18      | 532 43 77-62 | Grille Asm                    |
| 19      | 819 13 13-12 | Washer 13/32 x 13/16 x 12 Ga. |
| 25      | 532 44 33-85 | Lens RH                       |
| 36      | 817 06 05-12 | Screw 5/16-18 x 3/4           |
| 37      | 532 44 12-08 | Fender                        |
| 58      | 532 19 43-14 | Bracket Fender                |
| 68      | 817 49 05-08 | Screw 5/16-18 x 1/2           |
| 130     | 532 41 63-58 | Screw #10 x 0.750 BOS Thread  |
| 137     | 532 40 75-90 | Bumper Dash                   |
| 150     | 532 43 97-74 | Duct Heat Hood                |
| 151     | 532 43 66-70 | Bracket Pivot Hood            |
| 152     | 532 43 98-70 | Shield Browning               |
| 159     | 817 00 06-12 | Screw 3/8-16 x 3/4            |
| 161     | 532 43 99-29 | Console Fuel Window           |
| 162     | 532 14 24-32 | Screw Hex Wsh Hi-Lo 1/4 x 1/2 |
| 165     | 532 19 43-30 | Bracket Support Tank          |
| 175     | 532 19 63-04 | Crossmember                   |
| 176     | 532 40 07-76 | Screw 10-24 x 5/8 Wshd Qdrx   |
| 177     | 532 19 52-27 | Bushing Steering              |
| 178     | 532 19 97-82 | Cargo Asm. Net                |
| 179     | 532 16 89-37 | Nut Push                      |
| 180     | 532 44 55-59 | Chassis                       |
| 182     | 532 40 68-59 | Dash Lower                    |
| 183     | 874 52 05-20 | Bolt 5/16-18 x 1-1/4          |
| 189     | 817 00 05-12 | Screw 5/16-18 x 3/4           |
| 191     | 532 43 74-55 | Insert Reflect. RH            |
| 194     | 873 90 05-00 | Nut Lock Hex Flange 5/16-18   |
| 196     | 532 43 96-74 | Console Asm. Deck Lift        |
| 199     | 532 19 82-59 | Plate Deck Lift               |
| 202     | 532 43 97-28 | Vent Side Hood RH             |

| KEY NO. | PART NO.     | DESCRIPTION                   |
|---------|--------------|-------------------------------|
| 203     | 532 43 97-27 | Vent Side Hood LH             |
| 204     | 532 43 57-14 | Vent Asm Hood Top             |
| 205     | 532 43 97-30 | Skirt Hood Side RH            |
| 206     | 532 43 97-29 | Skirt Hood Side LH            |
| 207     | 532 43 97-34 | Bezel RH                      |
| 208     | 532 43 97-35 | Bezel LH                      |
| 214     | 532 19 91-45 | Clip Retainer                 |
| 217     | 532 40 91-67 | Rod Pivot                     |
| 221     | 532 19 89-09 | Reflector LH                  |
| 228     | 532 19 51-61 | Stud Fastener                 |
| 234     | 532 40 47-42 | Bumper Hood                   |
| 235     | 532 40 61-29 | Spacer Fender                 |
| 236     | 873 93 05-00 | Nut Center Lock 5/16-18 unc   |
| 297     | 532 43 74-56 | Insert Reflect. LH            |
| 335     | 532 44 82-04 | Cover RH Lower                |
| 336     | 532 44 53-09 | Cover LH Lower                |
| 350     | 532 44 51-43 | Clip X-mas Tree               |
| 351     | 532 42 17-34 | Pin Clevis .375 x 2.125       |
| 352     | 532 44 86-34 | Clevis .375 x 2.125           |
| 353     | 532 17 80-62 | Clip Retainer .0375           |
| 354     | 532 44 86-19 | Support Bellcrank             |
| 355     | 532 44 86-36 | Bellcrank Pivot Lock Diff     |
| 356     | 532 44 86-93 | Link Lock Diff                |
| 357     | 532 44 86-84 | Spring Compression            |
| 358     | 580 36 66-01 | Swivel Guide                  |
| 359     | 580 36 62-01 | Actuator Electric             |
| 360     | 532 44 86-18 | Bracket Actuator              |
| 361     | 817 49 06-10 | Screw Hxwsh Thdr 3/8-16 x 5/8 |
| 362     | 532 44 86-33 | Clevis .375 x 2.42            |
| 365     | 532 44 73-68 | Nylon Spacer .375 x .4375L    |
| --      | 532 43 18-82 | Kit Guard Brush               |

**NOTE:** All component dimensions given in U.S. inches  
1 inch = 25.4 mm

**TRACTOR - MODEL NO. GT54LS (96043015700), PROD. NO. 960 43 01-57  
DRIVE**



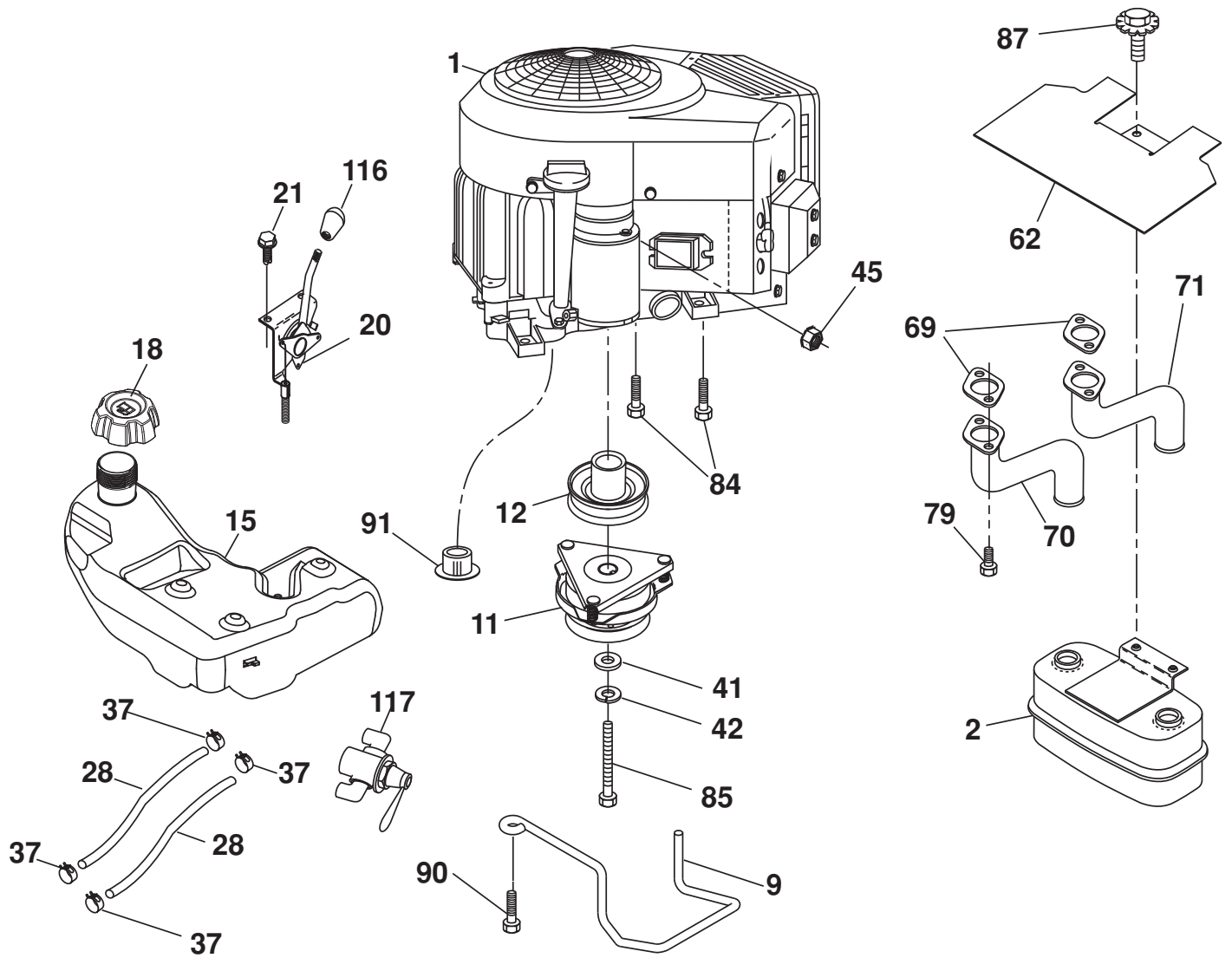


# TRACTOR - MODEL NO. GT54LS (96043015700), PROD. NO. 960 43 01-57 DRIVE

| KEY NO. | PART NO.     | DESCRIPTION  |
|---------|--------------|--|
| 1       | ---          | Transaxle, Tufftorq K66ELD (580402201)(Order parts from transaxle manufacturer.) |
| 2       | 532 00 70-70 | Key 1/4 x 2.5  |
| 3       | 532 00 75-63 | Washer Thrust Axle Hardened  |
| 7       | 532 19 98-37 | Hub Asm. Wheel   |
| 9       | 532 14 00-80 | Bolt Hub Wheel   |
| 15      | 819 13 13-16 | Washer 13/32 x 13/16 x 16 Ga.  |
| 17      | 532 40 10-72 | Spring, Brake  |
| 26      | 532 19 96-79 | Spring Return Cruise   |
| 29      | 532 40 72-45 | Rod, Brake   |
| 33      | 812 00 00-53 | Ring E   |
| 35      | 583 86 45-01 | Rod, Brake, Park   |
| 42      | 532 12 48-72 | Cover, Foot Pedal  |
| 43      | 874 18 04-12 | Screw Mach. CR. 1/4-20 x 3/4   |
| 49      | 872 11 06-14 | Bolt   |
| 50      | 532 19 43-27 | Pulley Idler Flat  |
| 51      | 873 90 06-00 | Lock Nut 3/8-16  |
| 52      | 532 19 43-26 | Idler V-Groove   |
| 56      | 532 12 59-07 | V-Belt, Drive  |
| 64      | 532 19 78-65 | Shaft Asm. Pedal Brake Control   |
| 69      | 532 12 38-00 | Washer 1-1/32 x 1-5/8 x 16 Ga.   |
| 70      | 532 43 96-61 | Console Asm  |
| 73      | 874 49 05-44 | Bolt Hex Flghd 5/16-18 Gr. 5   |
| 74      | 532 14 24-32 | Screw 1/4 x 1/2  |
| 80      | 532 40 71-82 | Strap Torque   |
| 92      | 874 76 05-20 | Bolt 5/16-18 x 1/2   |
| 99      | 532 41 57-44 | Spring Bypass  |
| 116     | 873 90 05-00 | Nut Lock Hex Flange 5/16-18  |
| 125     | 817 00 05-12 | Screw 5/16-18 x 3/4  |
| 153     | 532 12 47-88 | Retainer Spring  |
| 159     | 876 02 04-12 | Pin Cotter 1/8 x 3/4   |
| 160     | 532 16 94-84 | Retainer Clip  |
| 161     | 532 10 57-09 | Spring, Return, Clutch   |
| 163     | 532 40 72-46 | Rod Pedal Control  |

| KEY NO. | PART NO.     | DESCRIPTION                     |
|---------|--------------|---------------------------------|
| 166     | 532 42 91-64 | Nut Push .625                   |
| 167     | 532 40 52-57 | Latch Brake Parking             |
| 170     | 532 19 43-22 | Keeper V-Idler Centerspan       |
| 171     | 872 11 06-16 | Keeper V-Idler Centerspan       |
| 183     | 532 19 73-57 | Spacer Axle                     |
| 184     | 532 44 14-55 | Handle Parking Brake            |
| 185     | 872 11 06-22 | Bolt Rdhd 3/8-16 unc x 2-3/4 G5 |
| 186     | 532 19 43-21 | Spacer Retainer                 |
| 187     | 819 13 32-10 | Washer                          |
| 188     | 532 19 43-23 | Link Clutch Ground Drive        |
| 189     | 532 19 43-17 | Bellcrank Ground Drive          |
| 190     | 532 19 43-18 | Keeper Bellcrank Ground Drive   |
| 196     | 817 00 06-16 | Screw 3/8-16 x 1                |
| 197     | 532 19 97-69 | Bracket Clutch Anti-Rotation    |
| 206     | 532 44 85-96 | Bracket Mount Latch Cruise      |
| 207     | 532 19 78-68 | Latch Control Cruise            |
| 208     | 532 19 78-69 | Gear Sector Control Cruise      |
| 209     | 532 19 95-92 | Rod Control Cruise              |
| 210     | 532 19 78-60 | Rocker Asm. Pedal Control       |
| 211     | 532 12 01-83 | Bearing Nylon                   |
| 213     | 532 40 31-19 | Knob Control Cruise             |
| 214     | 532 41 68-63 | Pedal Forward                   |
| 215     | 532 40 17-23 | Pedal Reverse                   |
| 220     | 532 19 89-08 | Reflector RH                    |
| 221     | 532 40 31-87 | Retainer Spring Clip Handle     |
| 222     | 879 21 20-10 | Washer 21/32 x 1-1/4 x 10 Ga.   |
| 225     | 532 40 73-11 | Keeper Belt                     |
| 226     | 532 40 71-09 | Bracket Mount Torque            |
| 282     | 874 49 05-48 | Bolt 5/16-18 x 3.0 G5           |
| 284     | 532 41 76-93 | Nut U-Chnl. 1/4-20              |
| 366     | 580 62 62-01 | Bracket Reinforcement           |

**NOTE:** All component dimensions given in U.S. inches  
1 inch = 25.4 mm



**SPARK ARRESTER KIT**

engine-tex\_bs-2cyl\_26

# TRACTOR - MODEL NO. GT54LS (96043015700), PROD. NO. 960 43 01-57 ENGINE

| KEY NO. | PART NO.     | DESCRIPTION  |
|---------|--------------|--|
| 1       | ---          | Engine B&S Model No. 44Q777-2406-G5 (438243) (Order parts from engine manufacturer.) |
| 2       | 532 44 59-62 | Muffler  |
| 9       | 532 19 43-20 | Keeper Asm. Belt Engine  |
| 11      | 532 17 93-35 | Clutch Electric  |
| 12      | 532 19 43-43 | Pulley Engine  |
| 15      | 532 43 80-82 | Tank Fuel 4R   |
| 18      | 532 43 92-08 | Cap Asm  |
| 20      | 532 42 43-41 | Control Throttle   |
| 21      | 532 41 63-58 | Screw #10 x 0.750 BOS Thread   |
| 28      | 532 40 11-35 | Fuel Line  |
| 29      | 532 13 71-80 | Spark Arrester Kit   |
| 37      | 532 12 34-87 | Clamp Hose   |
| 41      | 532 12 61-97 | Washer 1-1/2 OD x 15/32 ID x .250  |
| 42      | 810 04 07-00 | Washer Lock 7/16   |
| 45      | 873 51 04-00 | Nut Keps Hex 1/4-20 unc  |
| 62      | 532 43 40-17 | Shield Heat Muffler  |
| 69      | 532 16 53-91 | Gasket   |
| 70      | 532 15 99-55 | Tube Exhaust LH  |
| 71      | 532 16 05-89 | Tube Exhaust RH  |
| 79      | 532 18 39-06 | Screw Socket HD 5/16-18 x 1  |
| 84      | 817 06 06-20 | Screw 3/8-16 x 1-1/4   |
| 85      | 532 17 99-53 | Bolt 7/16-20 x 3.75 Gr. 5  |
| 87      | 532 17 18-77 | Bolt 5/16-18 unc x 3/4 w/Sems  |
| 90      | 817 00 06-16 | Screw 3/8-16 x 1   |
| 91      | 532 18 74-95 | Bushing  |
| 116     | 539 13 26-24 | Knob Soft Touch  |
| 117     | 532 42 08-28 | Valve Fuel Reserve   |

**NOTE:** All component dimensions given in U.S. inches  
1 inch = 25.4 mm

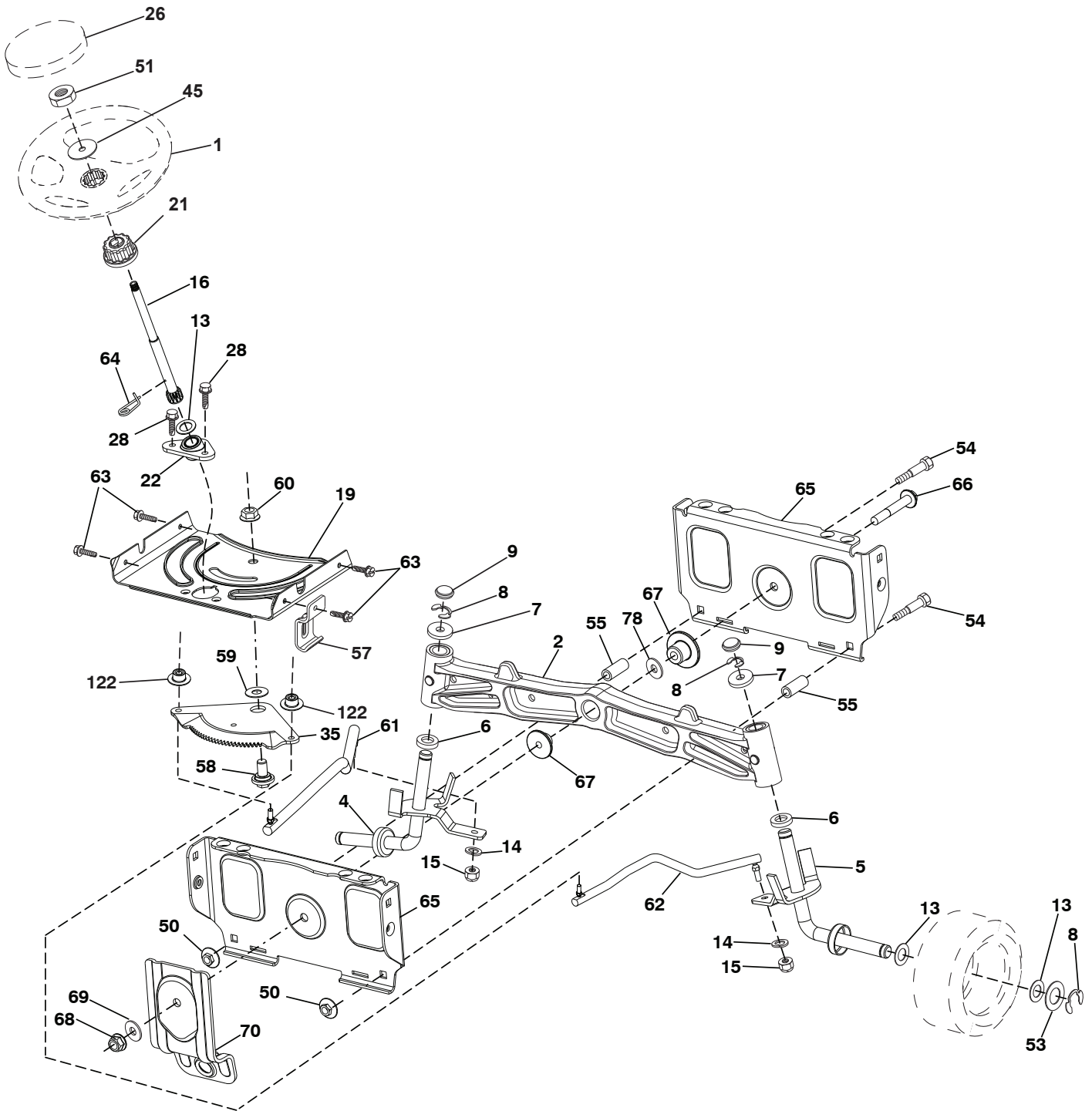
For engine service and replacement parts, call the toll free number for your engine manufacturer listed below:

Briggs & Stratton                      1-800-233-3723

## Engine Power Rating Information

The gross power rating for individual gas engine models is labeled in accordance with SAE (Society of Automotive Engineers) code J1940 (Small Engine Power & Torque Rating Procedure), and rating performance has been obtained and corrected in accordance with SAE J1995 (Revision 2002-05). Torque values are derived at 3060 RPM; horsepower values are derived at 3600 RPM. Actual gross engine power will be lower and is affected by, among other things, ambient operating conditions and engine-to-engine variability. Given both the wide array of products on which engines are placed and the variety of environmental issues applicable to operating the equipment, the gas engine will not develop the rated gross power when used in a given piece of power equipment (actual "on-site" or net power). This difference is due to a variety of factors including, but not limited to, accessories (air cleaner, exhaust, charging, cooling, carburetor, fuel pump, etc.), application limitations, ambient operating conditions (temperature, humidity, altitude), and engine-to-engine variability. Due to manufacturing and capacity limitations, Briggs & Stratton may substitute an engine of higher rated power for this Series engine.

**TRACTOR - MODEL NO. GT54LS (96043015700), PROD. NO. 960 43 01-57**  
**STEERING ASSEMBLY**



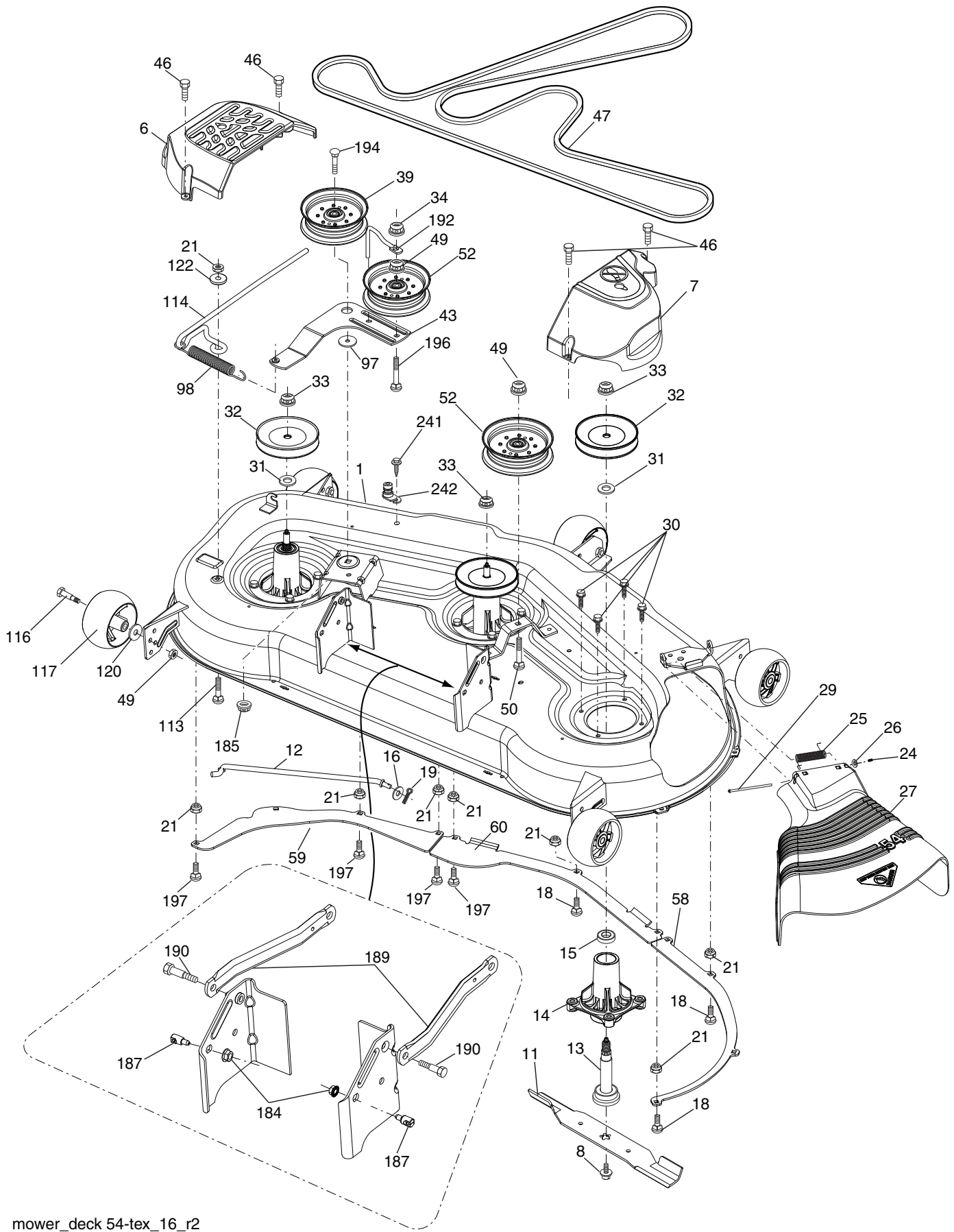
steerina-tex HUSQSR 37

**TRACTOR - MODEL NO. GT54LS (96043015700), PROD. NO. 960 43 01-57  
STEERING ASSEMBLY**

| <b>KEY NO.</b> | <b>PART NO.</b> | <b>DESCRIPTION</b>                  |
|----------------|-----------------|-------------------------------------|
| 1              | 532 43 97-40    | Wheel, Steering                     |
| 2              | 532 19 59-68    | Axle Asm., Front                    |
| 4              | 532 40 30-89    | Spindle Asm. LH                     |
| 5              | 532 40 30-90    | Spindle Asm. RH                     |
| 6              | 532 12 49-31    | Bearing, Race Thrust Harden         |
| 7              | 532 12 17-48    | Washer 25/32 x 1-5/8 x 16 Ga.       |
| 8              | 812 00 00-29    | Ring, Clip #T5304-75                |
| 9              | 532 12 12-32    | Cap, Spindle                        |
| 13             | 532 12 17-49    | Washer 25/32 x 1-1/4 x 16 Ga.       |
| 14             | 810 04 06-00    | Washer, Lock Hvy Hlcl Spr 3/8       |
| 15             | 873 54 06-00    | Nut, Crown Lock 3/8-24 unf          |
| 16             | 532 40 82-19    | Shaft Steering                      |
| 19             | 532 19 47-29    | Plate Steering                      |
| 21             | 532 18 67-37    | Adapter, Wheel Steering             |
| 22             | 532 42 05-37    | Steering Support Lower              |
| 26             | 532 43 97-43    | Insert, Wheel Steering              |
| 28             | 817 00 06-12    | Screw 3/8-16 x 3/4                  |
| 35             | 532 19 47-32    | Gear, Sector Plate                  |
| 45             | 819 18 38-12    | Washer 9/16 x 2-3/8 x 12 Ga.        |
| 50             | 873 90 06-00    | Nut Lock Flange 3/8-16 unc          |
| 51             | 873 94 08-00    | Nut Hex Jam Toplock 1/2-20 unf      |
| 53             | 532 18 89-67    | Washer Hardened .793 x 1.637 x .060 |
| 54             | 874 76 06-36    | Bolt Hex 3/8-16 unc x 2-1/4         |
| 55             | 532 41 47-36    | Spacer                              |
| 57             | 532 19 72-46    | Bracket Upstop                      |
| 58             | 532 19 47-47    | Bolt Shoulder Sector Pivot CFM      |
| 59             | 532 19 47-48    | Washer Thrust Sector Steering       |
| 60             | 873 97 10-00    | Nut Flange Lock 5/8-11              |
| 61             | 532 19 47-40    | Draglink, LH                        |
| 62             | 532 19 47-41    | Draglink, RH                        |
| 63             | 817 00 05-12    | Screw 5/16-18 x 3/4                 |
| 64             | 532 19 98-49    | Retainer Clip Spring Steering       |
| 65             | 532 19 47-34    | Brace Axle Front                    |
| 66             | 871 02 07-48    | Bolt Hex Fghd 7/16-14 x 3 Serr      |
| 67             | 532 19 47-37    | Bushing PM Front Axle               |
| 68             | 873 90 07-00    | Nut Lock Flange 7/16-14 Gr. 5       |
| 69             | 532 19 91-62    | Washer 1.5 x .505 x .118            |
| 70             | 532 19 61-97    | Bracket Deck Susp. Front            |
| 78             | 532 05 70-79    | Washer Thrust                       |
| 122            | 532 44 49-62    | Cap Gear Sector                     |

**NOTE:** All component dimensions given in U.S. inches  
1 inch = 25.4 mm

**TRACTOR - MODEL NO. GT54LS (96043015700), PROD. NO. 960 43 01-57  
MOWER DECK**



mower\_deck 54-tex\_16\_r2

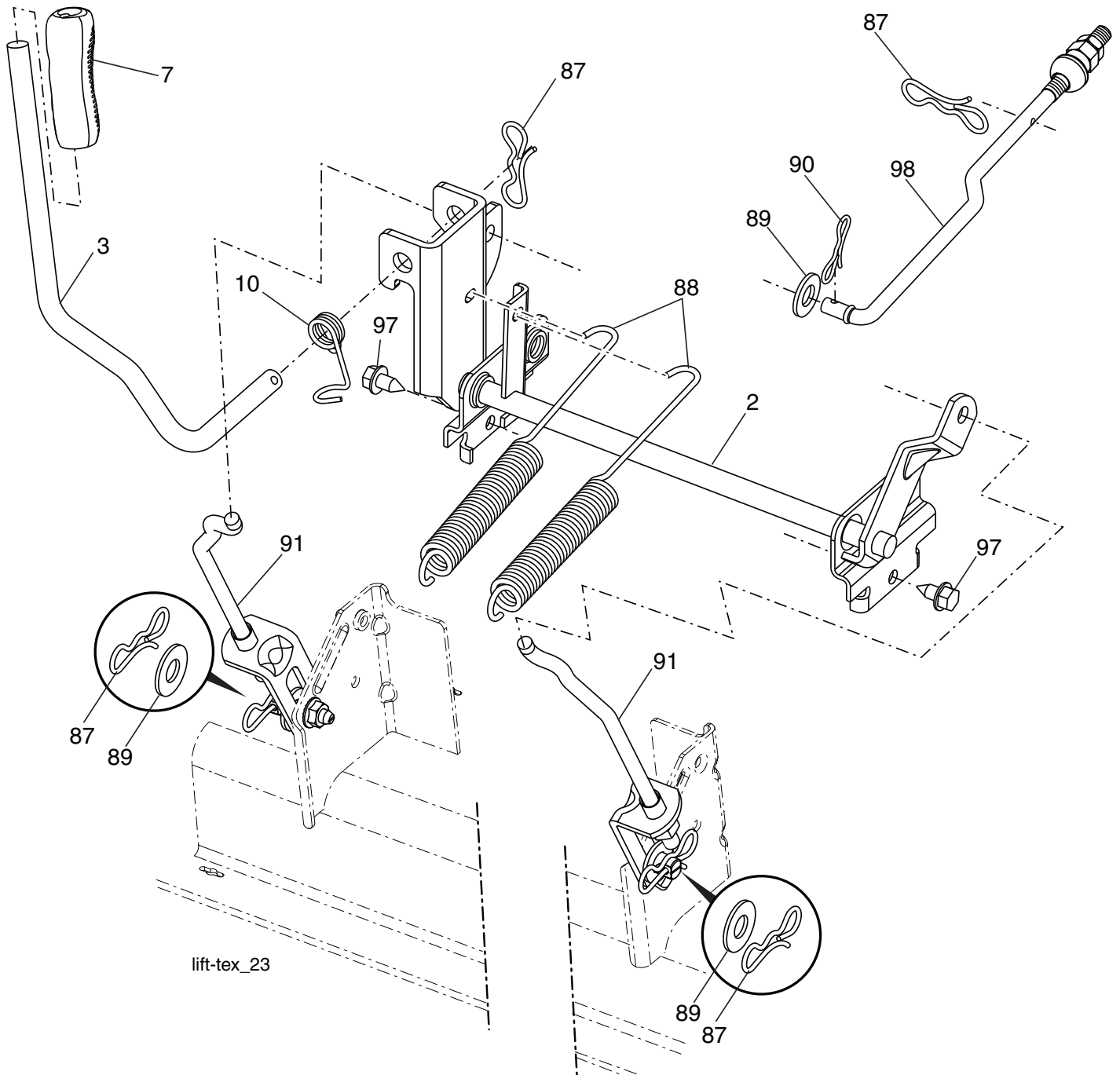
**TRACTOR - MODEL NO. GT54LS (96043015700), PROD. NO. 960 43 01-57  
MOWER DECK**

| <b>KEY NO.</b> | <b>PART NO.</b> | <b>DESCRIPTION</b>            | <b>KEY NO.</b> | <b>PART NO.</b> | <b>DESCRIPTION</b>   |
|----------------|-----------------|-------------------------------|----------------|-----------------|--|
| 1              | 532 44 50-61    | Deck Weldment Mower           | 60             | 532 18 76-07    | Baffle Center  |
| 6              | 532 19 60-66    | Cover Mandrel LH              | 97             | 532 17 85-15    | Washer Hardened  |
| 7              | 532 19 71-81    | Cover Mandrel RH              | 98             | 532 19 61-05    | Spring Drive   |
| 8              | 532 19 30-03    | Bolt 7/16 Asm. Blade          | 113            | 872 11 05-08    | Bolt Rdhd Sqnk 5/16-18 x 3/4   |
| 11             | 532 18 72-56    | Blade Bagging                 | 114            | 532 18 75-56    | Rod Tension Relief   |
| 12             | 532 40 48-51    | Rod Anti Sway                 | 116            | 532 19 34-06    | Bolt, Shoulder   |
| 13             | 532 18 72-91    | Shaft Asm. w/Lower Bearing    | 117            | 532 17 48-73    | Gauge Wheel  |
| 14             | 532 18 72-81    | Housing, Mandrel              | 120            | 819 13 20-12    | Washer 13/32 x 1-1/4 x 12 Ga.  |
| 15             | 532 11 04-85    | Bearing, Ball, Mandrel        | 122            | 532 18 75-57    | Bushing Tension Relief   |
| 16             | 819 13 13-12    | Washer 3/8                    | 184            | 873 90 05-00    | Nut Lock Hex Flange  |
| 18             | 872 14 05-05    | Bolt Carriage 5/16-18 x 5/8   | 185            | 873 90 07-00    | Nut Lock Flange 7/16-14 Gr. 5  |
| 19             | 532 19 42-08    | Pin Cotter 5/16 Bowtie        | 187            | 532 19 51-61    | Stud Fastener w/"D" Anti-Rotation  |
| 21             | 873 68 05-00    | Nut, Crownlock 5/16-18 unc    | 189            | 532 19 51-85    | Arm Susp. Mower Rear   |
| 24             | 532 10 53-04    | Cap Sleeve                    | 190            | 532 19 65-39    | Bolt Shoulder  |
| 25             | 532 17 81-02    | Spring, Torsion               | 192            | 532 19 84-68    | Keeper Belt Idler  |
| 26             | 532 11 04-52    | Nut, Push                     | 194            | 874 49 07-36    | Bolt Carr Sqnk 7/16-24 x 2   |
| 27             | 532 18 89-38    | Deflector Shield              | 196            | 872 14 06-20    | Bolt Rdhd 3/8-16 x 2-1/2 Gr. 5   |
| 29             | 532 13 14-91    | Rod, Hinge                    | 197            | 872 14 05-08    | Bolt Rdhd Sqnk 5/16-18 unc x 1   |
| 30             | 532 17 39-84    | Screw, Thdroll Washer Head    | 241            | 532 15 29-27    | Screw  |
| 31             | 532 18 76-90    | Washer, Spacer Mower Vented   | 242            | 532 41 55-98    | Washout Port   |
| 32             | 532 15 35-35    | Pulley, Mandrel               | --             | 532 41 64-05    | Coupling, Quick Connect  |
| 33             | 532 40 02-34    | Nut, Flg. Top Lock            | --             | 532 18 72-92    | Mandrel Assembly (Includes housing(key #14), shaft assembly (key #13), and bearing (key #15) only - pulley/nut/washer and blade bolt/washers not included) |
| 34             | 873 68 06-00    | Nut Crownlock 3/8-16 unc      |                |                 |  |
| 39             | 532 19 73-80    | Pulley, Idler, Stationary LH  |                |                 |  |
| 43             | 532 19 60-65    | Arm, Idler                    |                |                 |  |
| 46             | 532 13 77-29    | Screw, Thdroll. 1/4-20 x 5/8  |                |                 |  |
| 47             | 532 19 61-03    | Belt Deck Drive               | --             | 532 41 82-29    | Replacement Mower, Complete  |
| 49             | 873 90 06-00    | Nut, Lock Flg. 3/8-16 unc     |                |                 |  |
| 50             | 872 11 06-16    | Bolt Rdhd Sqnk 3/8-16 unc x 2 |                |                 |  |
| 52             | 532 19 73-79    | Pulley Idler                  |                |                 |  |
| 58             | 532 18 73-42    | Baffle Right                  |                |                 |  |
| 59             | 532 18 73-44    | Baffle Left                   |                |                 |  |

**NOTE:** All component dimensions given in U.S. inches  
1 inch = 25.4 mm



**TRACTOR - MODEL NO. GT54LS (96043015700), PROD. NO. 960 43 01-57  
MOWER LIFT**



lift-tex\_23

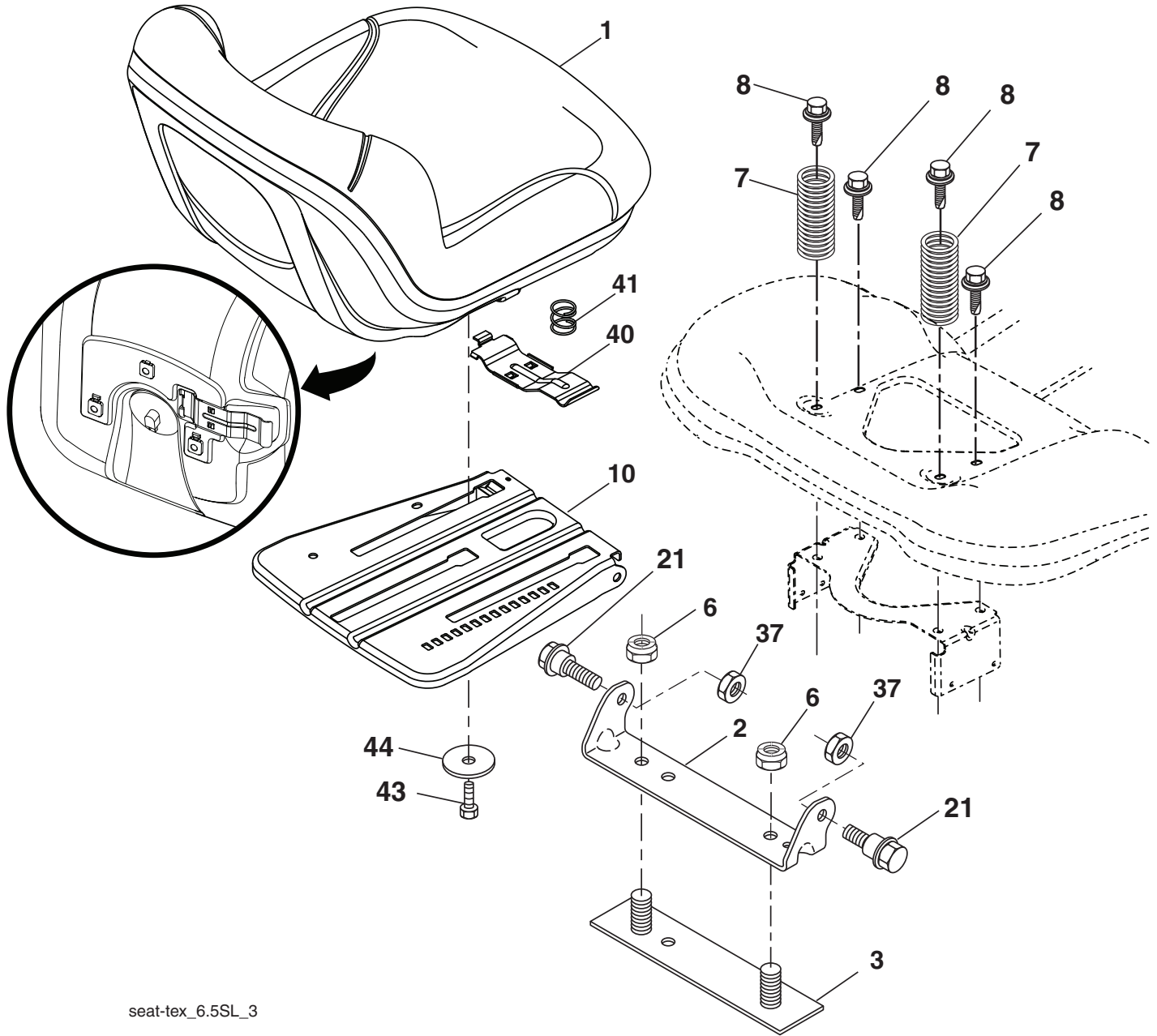
| KEY NO. | PART NO.     | DESCRIPTION                  |
|---------|--------------|------------------------------|
| 2       | 532 42 20-27 | Shaft Asm., Lift             |
| 3       | 532 19 52-31 | Lever Asm., Lift RH          |
| 7       | 580 96 23-01 | Grip, Lever                  |
| 10      | 532 19 63-14 | Spring Torsion               |
| 87      | 532 19 42-09 | Pin Cotter 7/16 Bow Tie Lock |
| 88      | 532 41 07-10 | Spring Lift Assist           |
| 89      | 819 19 19-12 | Washer Clear Zinc            |
| 90      | 532 19 42-08 | Pin Cotter 5/16 Bow Tie Lock |

| KEY NO. | PART NO.     | DESCRIPTION                 |
|---------|--------------|-----------------------------|
| 91      | 532 40 34-07 | Link Lift Susp Mower Rear   |
| 97      | 817 00 06-12 | Screw 3/8-16 x .75          |
| 98      | 532 19 52-64 | Link Lift Susp. Front Mower |

**NOTE:** All component dimensions given in U.S. inches  
1 inch = 25.4 mm



**TRACTOR - MODEL NO. GT54LS (96043015700), PROD. NO. 960 43 01-57  
SEAT ASSEMBLY**



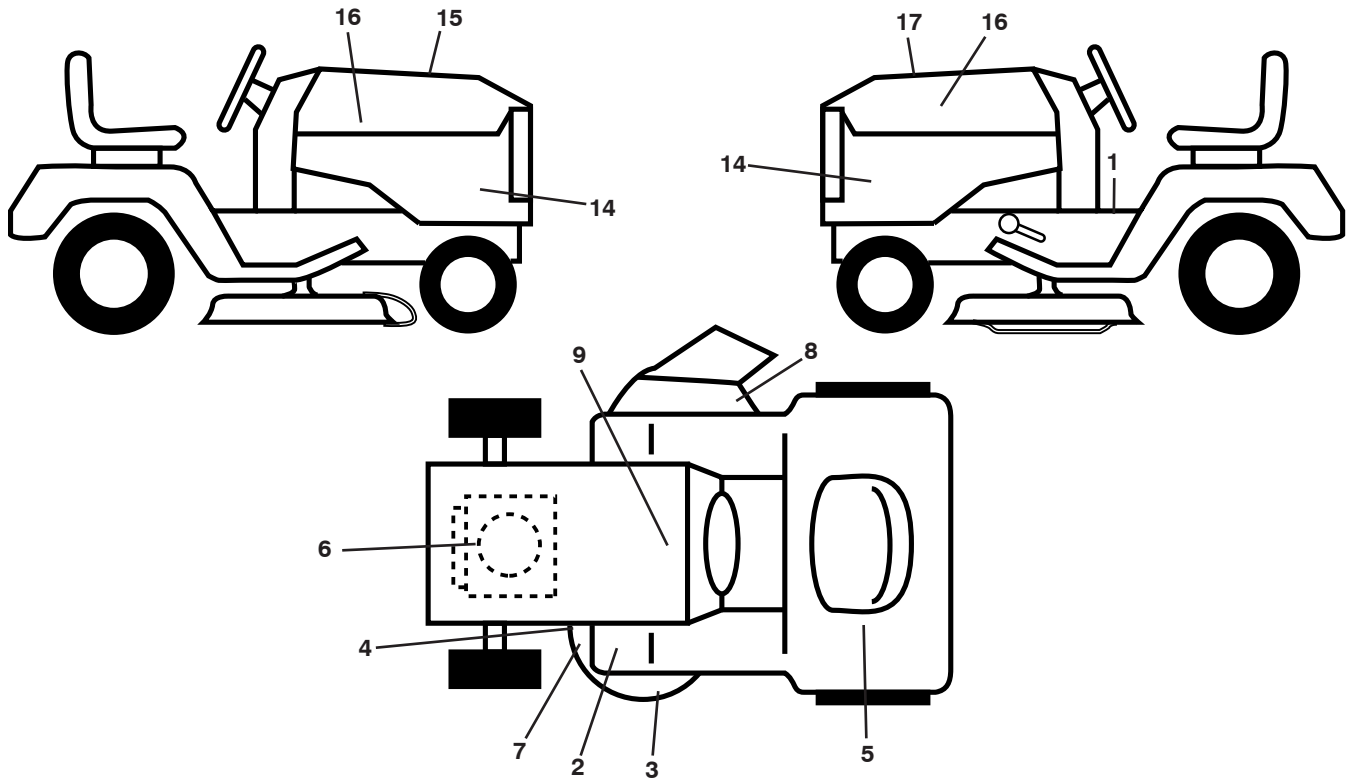
seat-tex\_6.5SL\_3

| KEY NO. | PART NO.     | DESCRIPTION                   |
|---------|--------------|-------------------------------|
| 1       | 532 44 32-63 | Seat                          |
| 2       | 532 18 01-66 | Bracket Pivot Fender          |
| 3       | 532 14 06-75 | Strap, Asm Fender             |
| 6       | 873 80 06-00 | Nut, Lock w/Ins. 3/8-16 unc   |
| 7       | 532 12 41-81 | Spring, Seat Cprsn            |
| 8       | 532 17 18-77 | Bolt 5/16-18 unc x 3/4 w/Sems |
| 10      | 532 19 69-77 | Pan, Seat                     |
| 21      | 532 17 18-52 | Bolt, Shoulder 5/16-18        |

| KEY NO. | PART NO.     | DESCRIPTION                   |
|---------|--------------|-------------------------------|
| 37      | 873 80 05-00 | Nut, Lock 5/16-18 unc         |
| 40      | 532 43 98-71 | Handle Slide Seat             |
| 41      | 532 19 82-00 | Spring Latch Seat             |
| 43      | 874 76 06-12 | Bolt Fin Hex 3/8-16 unc x 3/4 |
| 44      | 819 13 38-12 | Washer 13/32 x 2-3/8 x 12 Ga. |

**NOTE:** All component dimensions given in U.S. inches  
1 inch = 25.4 mm

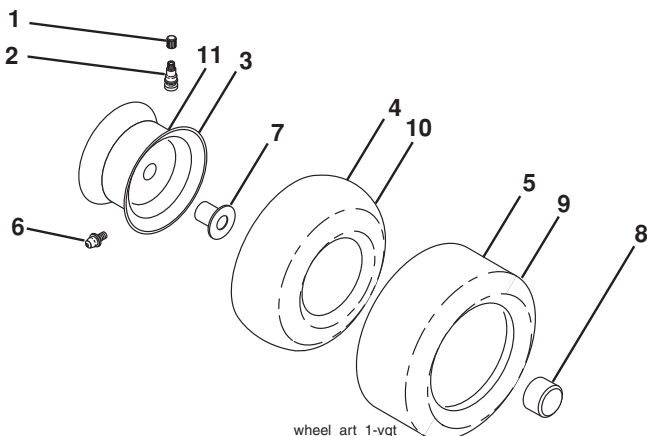
**TRACTOR - MODEL NO. GT54LS (96043015700), PROD. NO. 960 43 01-57  
DECALS**



| KEY NO. | PART NO.     | DESCRIPTION                          |
|---------|--------------|--------------------------------------|
| 1       | 581 57 89-01 | Decal, Operator's                    |
| 2       | 532 41 86-00 | Decal, Pedal                         |
| 3       | 532 44 81-21 | Decal, HV Reinforced Deck            |
| 4       | 581 58 00-02 | Decal, Mower Sch.                    |
| 5       | 581 72 42-01 | Decal, Warning Reserve               |
| 6       | 532 43 29-18 | Decal, Eng. H.P.                     |
| 7       | 581 72 45-02 | Decal, Mower Caution Tension         |
| 8       | 581 57 95-01 | Decal, Mower Warning Keep Hands Away |
| 9       | 532 14 50-05 | Decal, Battery Dnge/Poi              |

| KEY NO. | PART NO.     | DESCRIPTION                           |
|---------|--------------|---------------------------------------|
| 14      | 581 76 49-01 | Decal, Panel Side                     |
| 15      | 532 42 38-29 | Decal, Cust. Resp.                    |
| 16      | 581 62 73-01 | Decal, Hood Logo                      |
| 17      | 581 75 93-01 | Decal, Replacement                    |
| --      | 581 72 48-01 | Decal, Bypass                         |
| --      | 532 43 98-82 | Pad, Footrest, LH                     |
| --      | 532 43 98-81 | Pad, Footrest, RH                     |
| --      | 115 54 48-27 | Manual, Operator's (English/ Spanish) |
| --      | 581 77 64-27 | Manual, Parts (English/ Spanish)      |

**WHEELS AND TIRES**



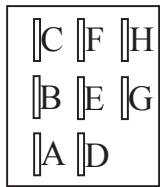
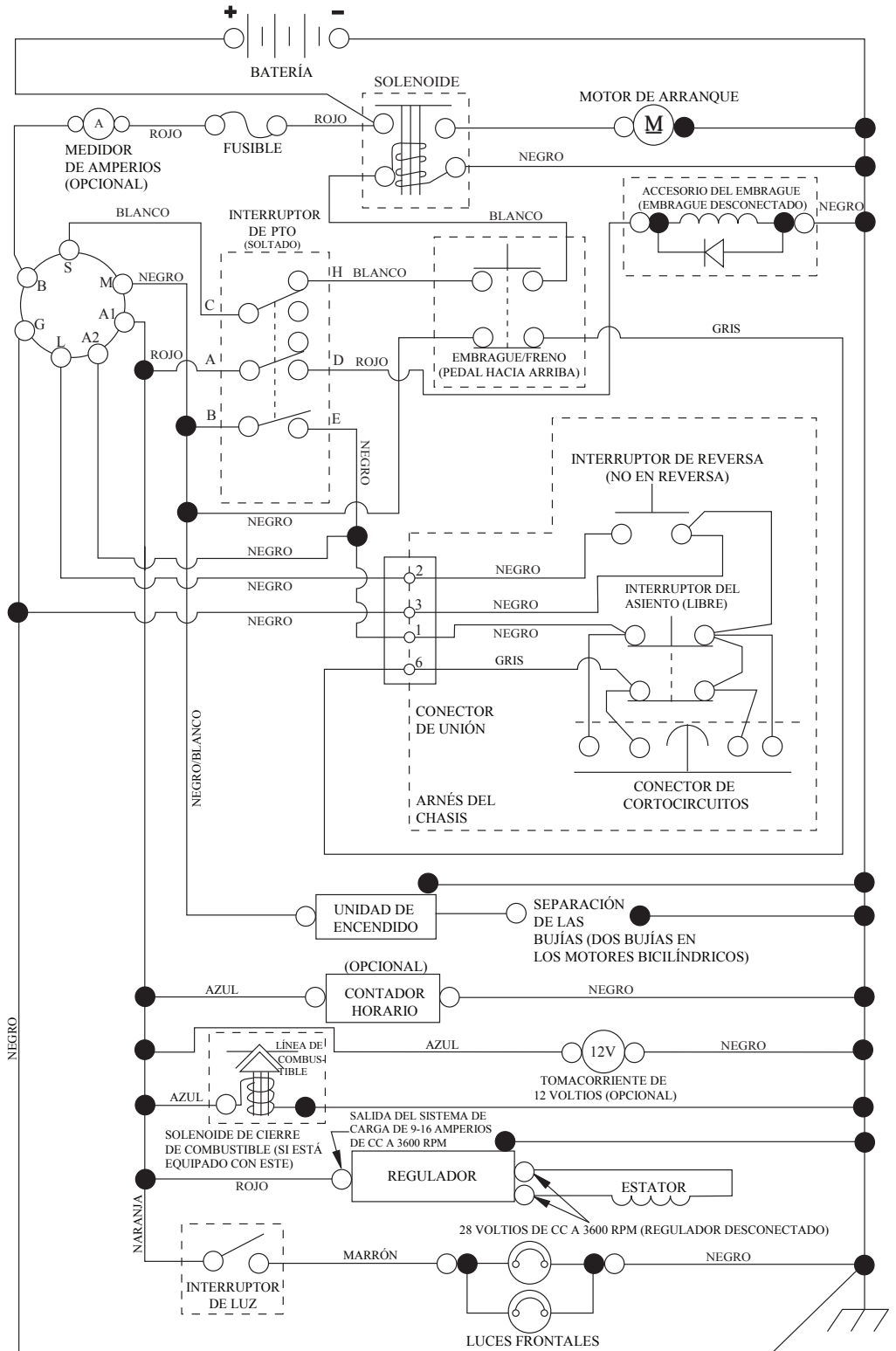
| KEY NO. | PART NO.     | DESCRIPTION                        |
|---------|--------------|------------------------------------|
| 1       | 532 05 91-92 | Cap, Valve, Tire                   |
| 2       | 532 06 51-39 | Stem, Valve                        |
| 3       | 532 18 18-39 | Rim Assembly, Front                |
| 4       | 532 00 81-34 | Tube, Front (Service Item Only)    |
| 5       | 532 16 10-24 | Tire, Front                        |
| 6       | 532 12 49-57 | Fitting, Grease (Front Wheel Only) |
| 7       | 532 12 49-59 | Bearing, Flange (Front Wheel Only) |
| 8       | 532 17 50-39 | Cap, Axle                          |
| 9       | 532 17 04-53 | Tire, Rear                         |
| 10      | 532 00 71-54 | Tube, Rear (Service Item Only)     |
| 11      | 532 14 45-10 | Rim Assembly, Rear                 |
| --      | 532 14 43-34 | Sealant, Tire (10 oz. Tube)        |

**NOTE:** All component dimensions given in U.S. inches  
1 inch = 25.4 mm

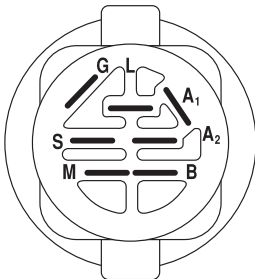
# TRACTOR - MODELO NO. GT54LS (96043015700), PROD. NO. 960 43 01-57

## DIAGRAMA

SCH12-s

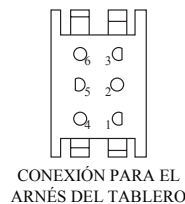


INTERRUPTOR DE PTO (CARA DE ACOPLAMIENTO)



INTERRUPTOR DE ENCENDIDO

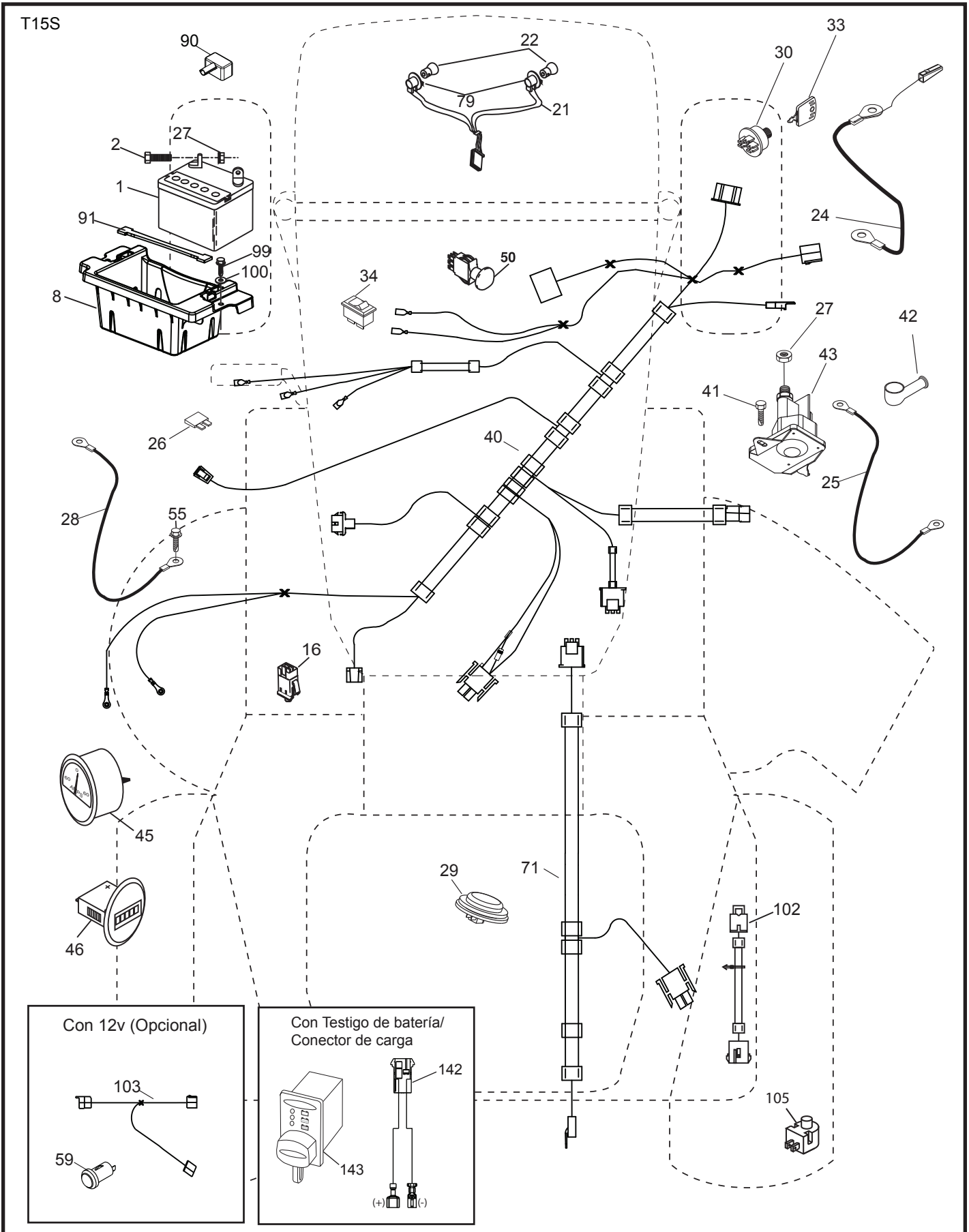
| POSICIÓN                       | CIRCUITO «MARCA» |
|--------------------------------|------------------|
| APAGADO                        | M+G+A1           |
| PONER EN FUNCIONAMIENTO/ANULAR | B+A1             |
| PONER EN FUNCIONAMIENTO        | B+A1      L+A2   |
| ARRANCAR                       | B + S + A1       |



NOTA SOBRE LAS ABRAZADERAS DE AISLAMIENTO DEL CABLEADO: SI SE QUITAN LAS ABRAZADERAS DE AISLAMIENTO DEL CABLEADO PARA HACER EL MANTENIMIENTO DE LA UNIDAD, SE LAS DEBERÁ INSTALAR NUEVAMENTE PARA PROTEGER EL CABLEADO ADECUADAMENTE.



**TRACTOR - MODELO NO. GT54LS (96043015700), PROD. NO. 960 43 01-57**  
**DIAGRAMA ELÉCTRICO**

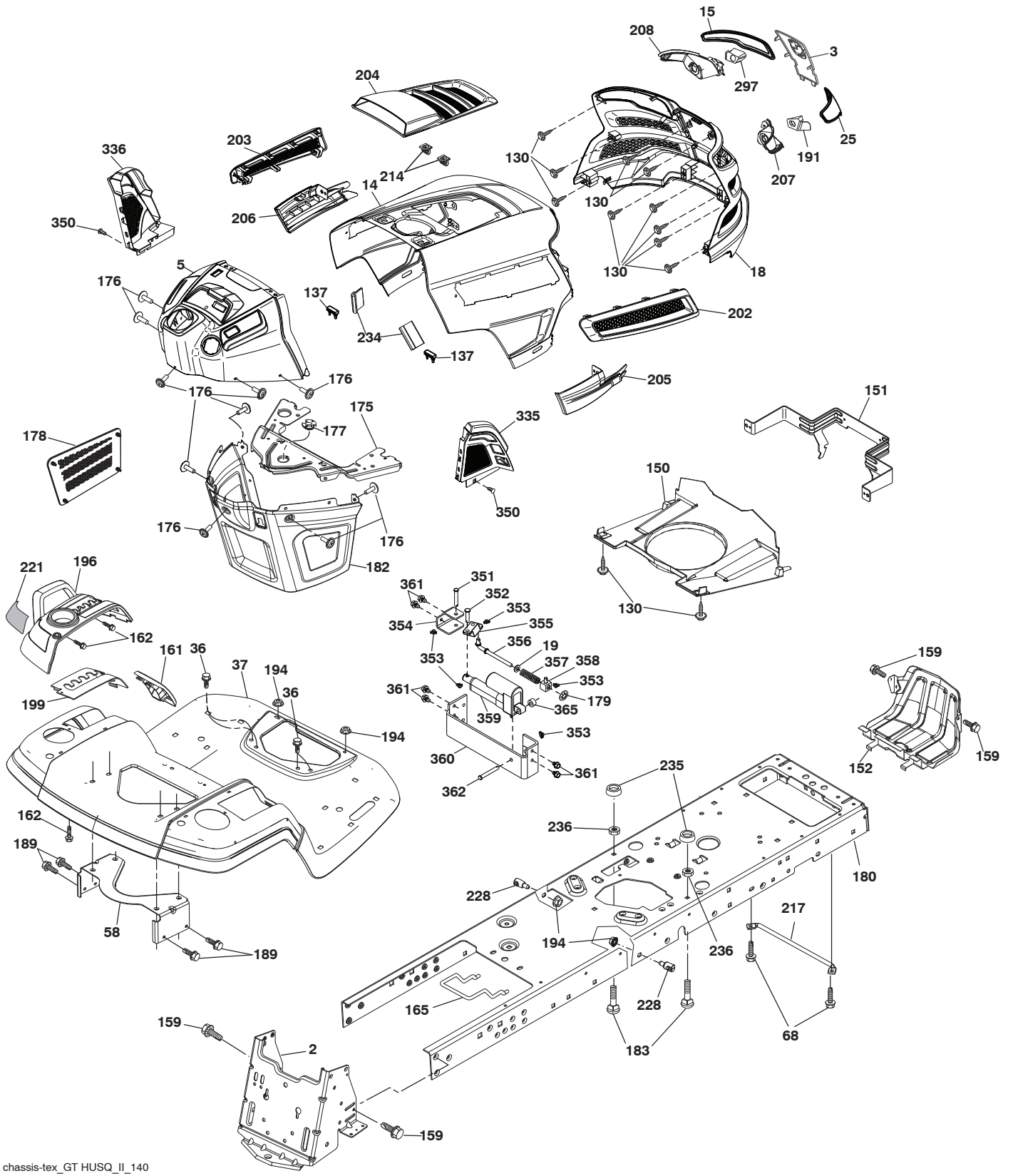


**TRACTOR - MODELO NO. GT54LS (96043015700), PROD. NO. 960 43 01-57**  
**DIAGRAMA ELÉCTRICO**

| <b>CÓDIGO NO.</b> | <b>PIEZA NO.</b> | <b>DESCRIPCIÓN</b>   |
|-------------------|------------------|--|
| 1                 | 532 16 34-65     | Batería  |
| 2                 | 874 76 04-12     | Perno 1/4-20 x 3/4   |
| 8                 | 532 18 64-91     | Puerta de la caja de la batería                              |
| 16                | 532 17 61-38     | Interruptor  |
| 21                | 532 40 02-52     | Arnés con 4152j  |
| 22                | 532 00 41-52     | Luz  |
| 24                | 532 40 02-53     | Cable de batería   |
| 25                | 532 41 28-95     | Cable  |
| 26                | 532 17 51-58     | Fusible  |
| 27                | 873 51 04-00     | Seguridad 1/4-20 unc   |
| 28                | 532 14 54-91     | Cable  |
| 29                | 532 40 15-45     | Interruptor  |
| 30                | 532 19 33-50     | Interruptor de ignición                                      |
| 33                | 532 41 19-33     | Llave\cadena   |
| 34                | 532 11 07-12     | Posición del interruptor de luz                              |
| 40                | 581 68 63-02     | Arnés  |
| 41                | 817 72 04-08     | Tornillo 1/4-20 x 1/2  |
| 42                | 532 13 15-63     | Cubierta   |
| 43                | 532 19 25-07     | Solenoide  |
| 45                | 532 42 52-70     | Amperímetro serie  |
| 46                | 532 42 52-71     | Dispositivo de aviso de servicio                             |
| 50                | 532 17 46-51     | Interruptor pto  |
| 55                | 817 06 05-12     | Tornillo, 5/16-18 x 3/4 tytt                                 |
| 59                | 532 40 03-03     | Salida 12-v  |
| 71                | 580 51 30-01     | Arnés de ignición Chasis                                     |
| 79                | 532 17 52-42     | Enchufe de cierre por torsión del<br>ensamble de la bombilla |
| 90                | 532 43 53-95     | Cubierta   |
| 91                | 532 19 02-70     | Correa   |
| 99                | 817 67 04-12     | Tornillo, 1/4-20 x 3/4                                       |
| 100               | 819 09 14-16     | Arandela 9/32 x 7/8 x calibre 16                             |
| 102               | 532 40 44-54     | Arnés  |
| 103               | 532 42 17-47     | Arnés 12-v   |
| 105               | 532 40 75-68     | Interruptor  |
| 142               | 532 44 80-57     | Arnés  |
| 143               | 580 36 64-01     | Interruptor  |

**NOTA:** Las dimensiones de todos los componentes están expresadas en pulgadas americanas. 1 pulgada = 25,4 mm

**TRACTOR - MODELO NO. GT54LS (96043015700), PROD. NO. 960 43 01-57  
CHASIS**



chassis-tex\_GT HUSQ\_II\_140

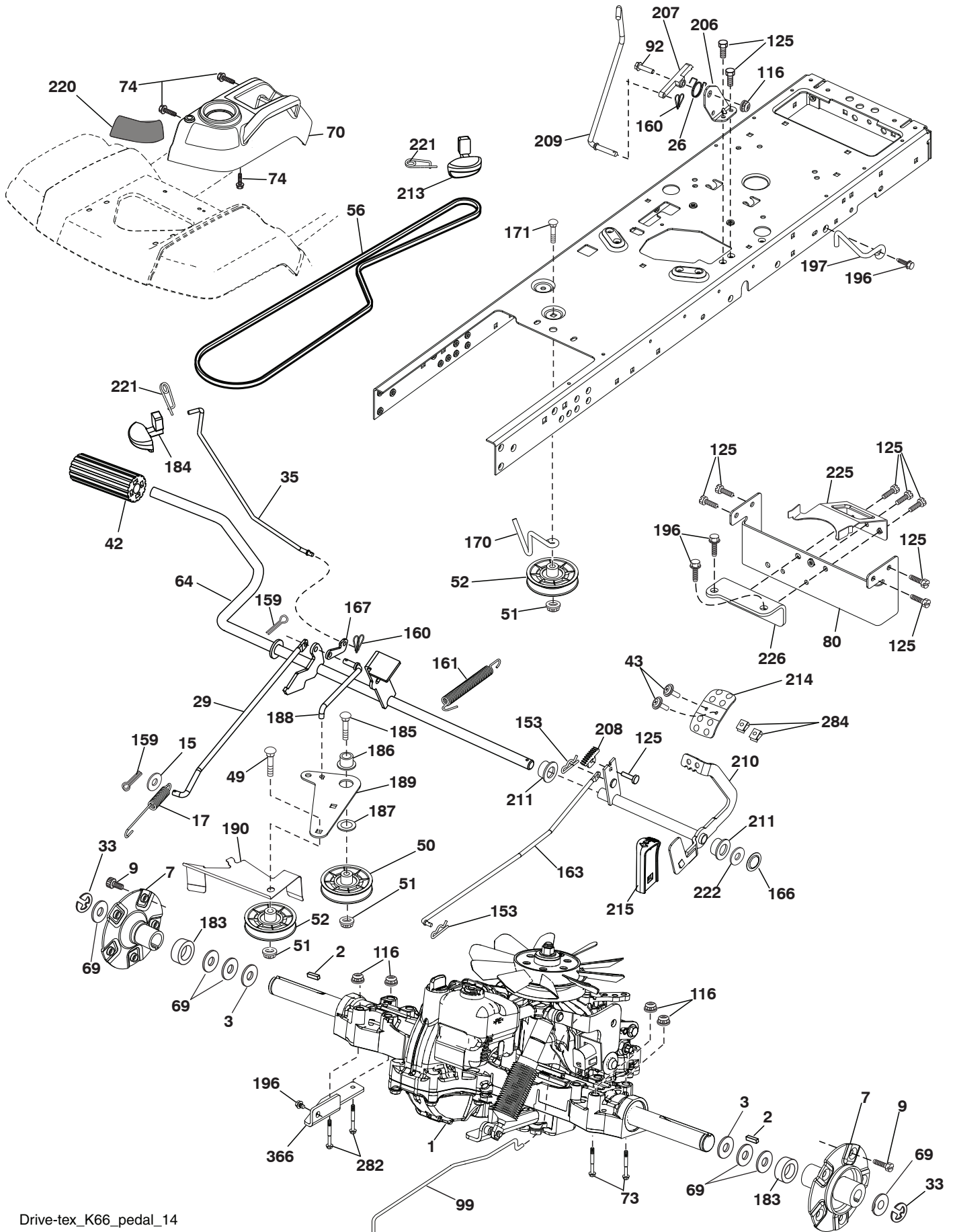
**TRACTOR - MODELO NO. GT54LS (96043015700), PROD. NO. 960 43 01-57  
CHASIS**

| CÓDIGO PIEZA |              |   | CÓDIGO PIEZA |              |                                   |
|--------------|--------------|---|--------------|--------------|-----------------------------------|
| No.          | No.          | DESCRIPCIÓN   | No.          | No.          | DESCRIPCIÓN                       |
| 2            | 580 43 44-01 | Barra de tracción                                       | 204          | 532 43 57-14 | Salida de Ventilación superior    |
| 3            | 532 44 44-81 | Aplica  | 205          | 532 43 97-30 | Camisa de Capota (LD)             |
| 5            | 581 67 42-01 | Tablero   | 206          | 532 43 97-29 | Camisa de Capota (LI)             |
| 14           | 532 44 11-77 | Capota  | 207          | 532 43 97-34 | Bisel derecho                     |
| 15           | 532 43 97-33 | Lente izquierdo de la parrilla                          | 208          | 532 43 97-35 | Bisel izquierdo                   |
| 18           | 532 43 77-62 | Parrilla  | 214          | 532 19 91-45 | Cierre                            |
| 19           | 819 13 13-12 | Arandela de 13/32 x 13/16 x 12<br>calibre 16            | 217          | 532 40 91-67 | Varilla giratoria                 |
| 25           | 532 44 33-85 | Lente derecho de la parrilla                            | 221          | 532 19 89-09 | Reflector (LI)                    |
| 36           | 817 06 05-12 | Tornillo 5/16-18 x 3/4                                  | 228          | 532 19 51-61 | Sujetador del travesaño           |
| 37           | 532 44 12-08 | Guardabarros  | 234          | 532 40 47-42 | Cubierta Capota                   |
| 58           | 532 19 43-14 | Soporte   | 235          | 532 40 61-29 | Separador del guardabarros        |
| 68           | 817 49 05-08 | Tornillo 5/16-18 x 1/2                                  | 236          | 873 93 05-00 | Tuerca 5/16-18 unc                |
| 130          | 532 41 63-58 | Tornillo #10 x 0.750                                    | 297          | 532 43 74-56 | Parrilla reflector (LI)           |
| 137          | 532 40 75-90 | Cubierta Tablero  | 335          | 532 44 82-04 | Cubierta (LD)                     |
| 150          | 532 43 97-74 | Cubierta térmica del conducto                           | 336          | 532 44 53-09 | Cubierta (LI)                     |
| 151          | 532 43 66-70 | Soporte   | 350          | 532 44 51-43 | Clip del árbol de navidad         |
| 152          | 532 43 98-70 | Protector contra oscurecimiento                         | 351          | 532 42 17-34 | Clavija de horquilla .375 x 2.125 |
| 159          | 817 00 06-12 | Tornillo 3/8-16 x 3/4                                   | 352          | 532 44 86-34 | Clavija .375 x 2.125              |
| 161          | 532 43 99-29 | Ventana   | 353          | 532 17 80-62 | Pinzas de retención .0375         |
| 162          | 532 14 24-32 | Tornillo 1/4 x 1/2                                      | 354          | 532 44 86-19 | Soporte                           |
| 165          | 532 19 43-30 | Soporte   | 355          | 532 44 86-36 | Mecanismo                         |
| 175          | 532 19 63-04 | Travesaño   | 356          | 532 44 86-93 | Acoplamiento                      |
| 176          | 532 40 07-76 | Tornillo 10-24 x 5/8                                    | 357          | 532 44 86-84 | Resorte                           |
| 177          | 532 19 52-27 | Buje de soporte del guardabarros<br>de carga            | 358          | 580 36 66-01 | Guía                              |
| 178          | 532 19 97-82 | Carga la asamblea neta                                  | 359          | 580 36 62-01 | Accionador                        |
| 179          | 532 16 89-37 | Tuerca de presión                                       | 360          | 532 44 86-18 | Soporte del accionador            |
| 180          | 532 44 55-59 | Chasis  | 361          | 817 49 06-10 | Tornillo 3/8-16 x 5/8             |
| 182          | 532 40 68-59 | Tablero   | 362          | 532 44 86-33 | Clavija .375 x 2.42               |
| 183          | 874 52 05-20 | Perno 5/16-18 x 1-1/4                                   | 365          | 532 44 73-68 | Separador .375 x .4375L           |
| 189          | 817 00 05-12 | Tornillo 5/16-18 x 3/4                                  | --           | 532 43 18-82 | Kit del protector del cepillo     |
| 191          | 532 43 74-55 | Parrilla reflector (LD)                                 |              |              |                                   |
| 194          | 873 90 05-00 | Tuerca 5/16-18  |              |              |                                   |
| 196          | 532 43 96-74 | Ensamble de la consola de la<br>plataforma de elevación |              |              |                                   |
| 199          | 532 19 82-59 | Plataforma de elevación                                 |              |              |                                   |
| 202          | 532 43 97-28 | Salida de Ventilación (LD)                              |              |              |                                   |
| 203          | 532 43 97-27 | Salida de Ventilación (LI)                              |              |              |                                   |

**NOTA:** Las dimensiones de todos los componentes están expresadas en pulgadas americanas. 1 pulgada = 25,4 mm



**TRACTOR - MODELO NO. GT54LS (96043015700), PROD. NO. 960 43 01-57**  
**TRANSMISIÓN**



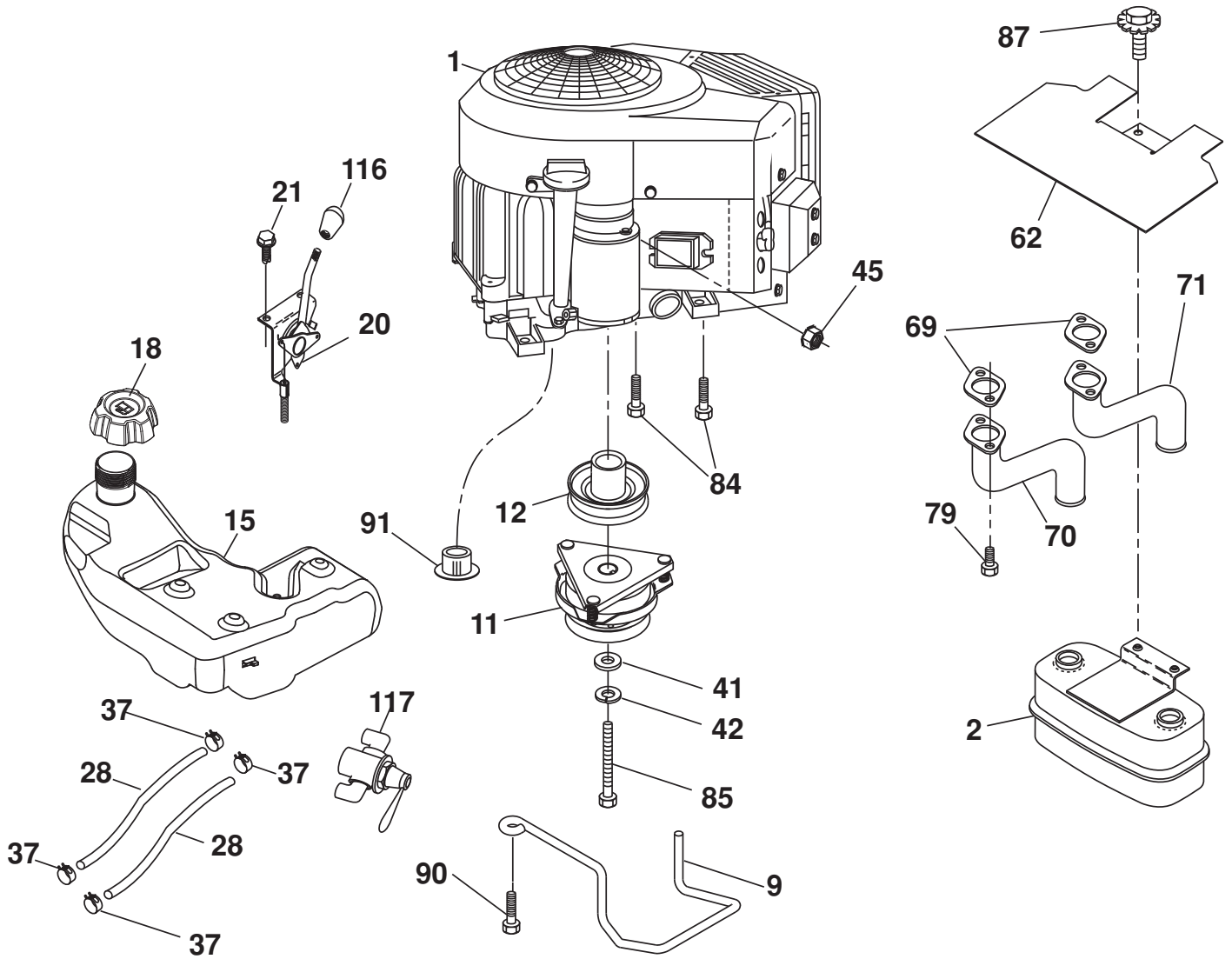


# TRACTOR - MODELO NO. GT54LS (96043015700), PROD. NO. 960 43 01-57 TRANSMISIÓN

| CÓDIGO PIEZA |              |  | CÓDIGO PIEZA |              |   |
|--------------|--------------|--|--------------|--------------|---|
| No.          | No.          | DESCRIPCIÓN  | No.          | No.          | DESCRIPCIÓN   |
| 1            | ---          | Transeje, Tufftorq K66ELD (580402201) (Haga el pedido de las piezas al fabricante del transeje.) | 166          | 532 42 91-64 | Tuerca .625   |
| 2            | 532 00 70-70 | Cuña 1/4 x 2.5   | 167          | 532 40 52-57 | Pestillo del freno de mano                                      |
| 3            | 532 00 75-63 | Arandela   | 170          | 532 19 43-22 | Sujetador de la correa  |
| 7            | 532 19 98-37 | Ruede eje la asamblea  | 171          | 872 11 06-16 | Sujetador de la correa  |
| 9            | 532 14 00-80 | Perno  | 183          | 532 19 73-57 | Separador del eje   |
| 15           | 819 13 13-16 | Arandela 13/32 x 13/16 x Calibre 16  | 184          | 532 44 14-55 | Manija del freno de mano  |
| 17           | 532 40 10-72 | Resorte de freno   | 185          | 872 11 06-22 | Perno 3/8-16 unc x 2-3/4 Gr 5                                   |
| 26           | 532 19 96-79 | Crucero con retorno de muelle  | 186          | 532 19 43-21 | Espaciador de retención   |
| 29           | 532 40 72-45 | Varilla del freno  | 187          | 819 13 32-10 | Arandela  |
| 33           | 812 00 00-53 | Aro "E"  | 188          | 532 19 43-23 | Mecanismo de desplazamiento de la varilla de mando del embrague |
| 35           | 583 86 45-01 | Varilla del freno de mano  | 189          | 532 19 43-17 | Palanca acodada del mecanismo de desplazamiento                 |
| 42           | 532 12 48-72 | Cubierta del pedal   | 190          | 532 19 43-18 | Sujetador de la palanca acodada del mecanismo de desplazamiento |
| 43           | 874 18 04-12 | Tornillo 1/4-20 x 3/4  | 196          | 817 00 06-16 | Tornillo 3/8-16 x 1   |
| 49           | 872 11 06-14 | Perno  | 197          | 532 19 97-69 | Bracket Clutch Anti-Rotation                                    |
| 50           | 532 19 43-27 | Polea loca plana   | 206          | 532 44 85-96 | Soporte   |
| 51           | 873 90 06-00 | Tuerca 3/8-16  | 207          | 532 19 78-68 | Bloqueo del control del crucero                                 |
| 52           | 532 19 43-26 | Polea loca con ranura en V con un desplazamiento   | 208          | 532 19 78-69 | Engranaje del sector de control del crucero                     |
| 56           | 532 12 59-07 | Correa trapezoidal de la transmisión   | 209          | 532 19 95-92 | Varilla de control del crucero                                  |
| 64           | 532 19 78-65 | Ensamble del eje Control del pedal de freno  | 210          | 532 19 78-60 | Ensamble del balancín del control del pedal                     |
| 69           | 532 12 38-00 | Arandela 1-1/32 x 1-5/8 x Calibre 16   | 211          | 532 12 01-83 | Rodamiento de nylon   |
| 70           | 532 43 96-61 | Ensamble del console   | 213          | 532 40 31-19 | Perilla de control del crucero                                  |
| 73           | 874 49 05-44 | Perno 5/16-18 x 3 Gr. 5  | 214          | 532 41 68-63 | Forro del pedal para avanzar                                    |
| 74           | 532 14 24-32 | Tornillo 1/4 x 1/2   | 215          | 532 40 17-23 | Forro del pedal para retroceder                                 |
| 80           | 532 40 71-82 | Correa de torsión  | 220          | 532 19 89-08 | Reflector (LD)  |
| 92           | 874 76 05-20 | Perno 5/16-18 x 1/2  | 221          | 532 40 31-87 | Abrazadera de retención del resorte de la manija                |
| 99           | 532 41 57-44 | Resorte  | 222          | 879 21 20-10 | Arandela 21/32 x 1-1/4 x Calibre 10                             |
| 116          | 873 90 05-00 | Tuerca 5/16-18   | 225          | 532 40 73-11 | Sujetador de la correa  |
| 125          | 817 00 05-12 | Tornillo 5/16-18 x 3/4   | 226          | 532 40 71-09 | Soporte de montaje  |
| 153          | 532 12 47-88 | Retén del resorte  | 282          | 874 49 05-48 | Perno 5/16-18 x 3.0 Gr 5  |
| 159          | 876 02 04-12 | Pasador de chaveta de 1/8 x 3/4  | 284          | 532 41 76-93 | Tuerca 1/4-20   |
| 160          | 532 16 94-84 | Abrazadera de retención  | 366          | 580 62 62-01 | Soporte   |
| 161          | 532 10 57-09 | Resorte de retorno del embrague  |              |              |   |
| 163          | 532 40 72-46 | Varilla de control del pedal   |              |              |   |

**NOTA:** Las dimensiones de todos los componentes están expresadas en pulgadas americanas. 1 pulgada = 25,4 mm

TRACTOR - MODELO NO. GT54LS (96043015700), PROD. NO. 960 43 01-57  
MOTOR



29

**EQUIPO APAGACHISPAS**

engine-tex\_bs-2cyl\_26

# TRACTOR - MODELO NO. GT54LS (96043015700), PROD. NO. 960 43 01-57 MOTOR

| CÓDIGO PIEZA |              | DESCRIPCIÓN   |
|--------------|--------------|---|
| No.          | No.          |   |
| 1            | — — — — —    | Motor B&S Modelo No. 44Q777-2406-G5 (438243)(Haga el pedido de las piezas al fabricante del motor.) |
| 2            | 532 44 59-62 | Silenciador   |
| 9            | 532 19 43-20 | Ensamble del sujetador de la correa del motor   |
| 11           | 532 17 93-35 | Embrague eléctrico  |
| 12           | 532 19 43-43 | Polea del motor   |
| 15           | 532 43 80-82 | Tanque de combustible de 4,0R   |
| 18           | 532 43 92-08 | Ensamble de la tapa   |
| 20           | 532 42 43-41 | Control del regulador   |
| 21           | 532 41 63-58 | Tornillo #10 x 0.750  |
| 28           | 532 40 11-35 | Línea de combustible  |
| 29           | 532 13 71-80 | Equipo apagachispas   |
| 37           | 532 12 34-87 | Abrazadera de la manguera   |
| 41           | 532 12 61-97 | Arandela 1-1/2 OD x 15/32 ID x .250   |
| 42           | 810 04 07-00 | Arandela  |
| 45           | 873 51 04-00 | Tuerca 1/4-20 unc   |
| 62           | 532 43 40-17 | Silenciador con pantalla térmica  |
| 69           | 532 16 53-91 | Junta   |
| 70           | 532 15 99-55 | Tubo de escape izquierdo  |
| 71           | 532 16 05-89 | Tubo de escape derecho  |
| 79           | 532 18 39-06 | Tornillo 5/16-18 x 1  |
| 84           | 817 06 06-20 | Tornillo 3/8-16 x 1-1/4   |
| 85           | 532 17 99-53 | Perno 7/16-20 x 3.75 Gr. 5  |
| 87           | 532 17 18-77 | Perno 5/16-18 unc x 3/4   |
| 90           | 817 00 06-16 | Tornillo 3/8-16 x 1   |
| 91           | 532 18 74-95 | Buje  |
| 116          | 539 13 26-24 | Perilla   |
| 117          | 532 42 08-28 | Abastecza de combustible Válvula  |

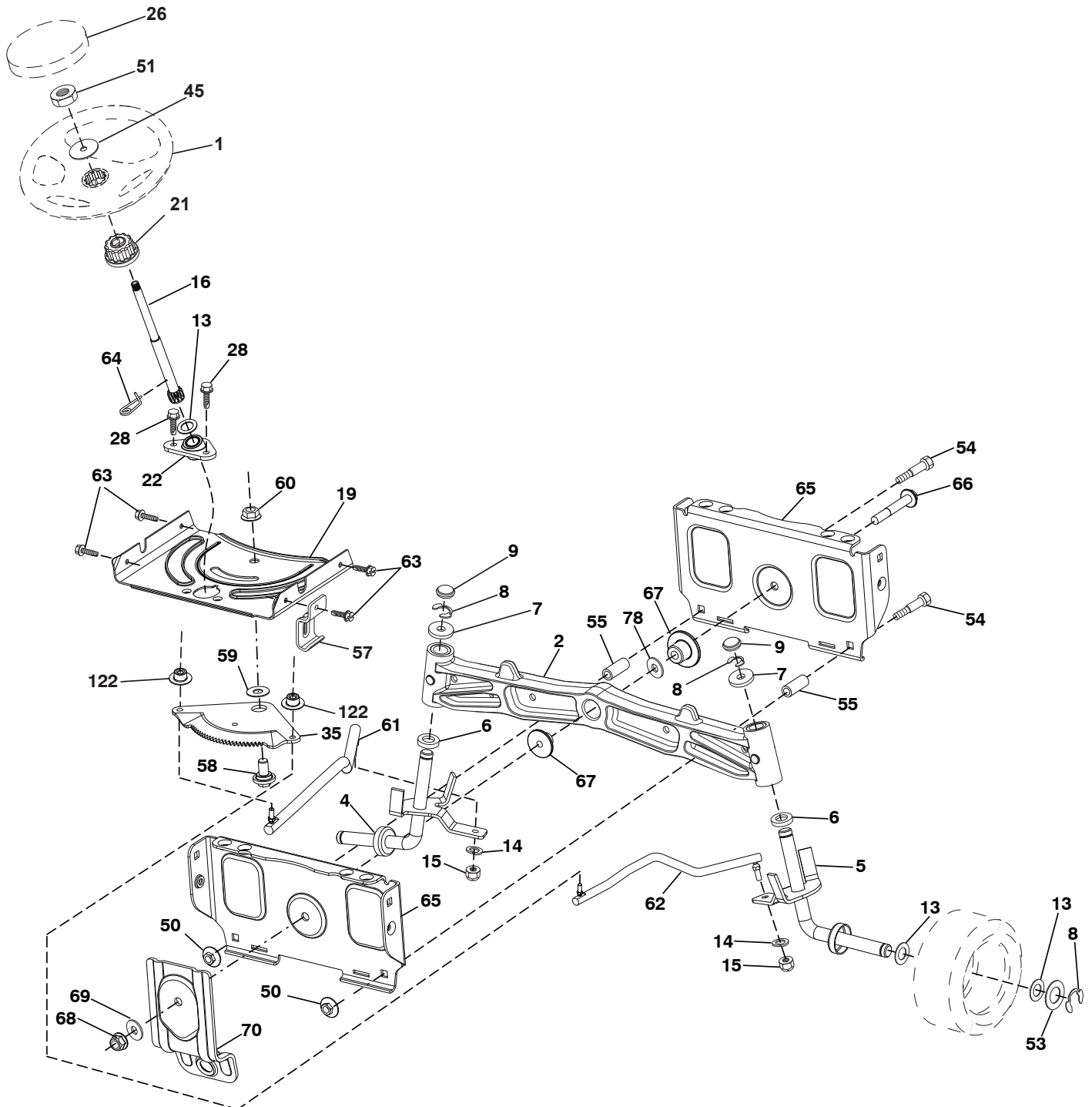
**NOTA:** Las dimensiones de todos los componentes están expresadas en pulgadas americanas. 1 pulgada = 25,4 mm

Para el servicio de motor y repuestos, llame el número de llamada gratuita para su fabricante de motor listó abajo:  
Briggs & Stratton 1-800-233-3723

## Información de Clasificación de Potencia del Motor

La clasificación de potencia para un modelo de motor a gas en particular se designa de acuerdo al código J1940 de SAE (Sociedad de Ingenieros Automotrices) (Procedimiento de Clasificación de Potencia & Torque del Motor Pequeño), y la clasificación de desempeño ha sido obtenida y corregida de acuerdo con el código J1995 de SAE (Revisión 2002-05). Los valores de torque se obtienen a 3060 RPM; los valores de potencia se obtienen a 3600 RPM. La potencia bruta actual del motor será inferior y está afectada, entre otras cosas, por las condiciones ambientales operativas y la variabilidad de motor a motor. Dado ambos un amplio conjunto de productos en los cuales son puestos nuestros motores, y la variedad de emisiones ambientales aplicables al operar el equipo, el motor a gas no desarrollará la potencia nominal cuando sea usado en una parte del equipo acoplado (potencia real "en el-sitio" o potencia neta). Esta diferencia se debe a una variedad de factores que incluyen, pero que no están limitados a, accesorios (filtro de aire, sistema de escape, sistema de carga, sistema de enfriamiento, carburador, bomba de combustible, etc.) limitaciones de la aplicación, condiciones ambientales de operación (temperatura, humedad, altitud), y la variabilidad de motor a motor. Debido a las limitaciones, Briggs & Stratton puede sustituir este motor con clasificación de potencia más alta por esta serie de motor.

**TRACTOR - MODELO NO. GT54LS (96043015700), PROD. NO. 960 43 01-57**  
**ENSAMBLE DE LA DIRECCIÓN**



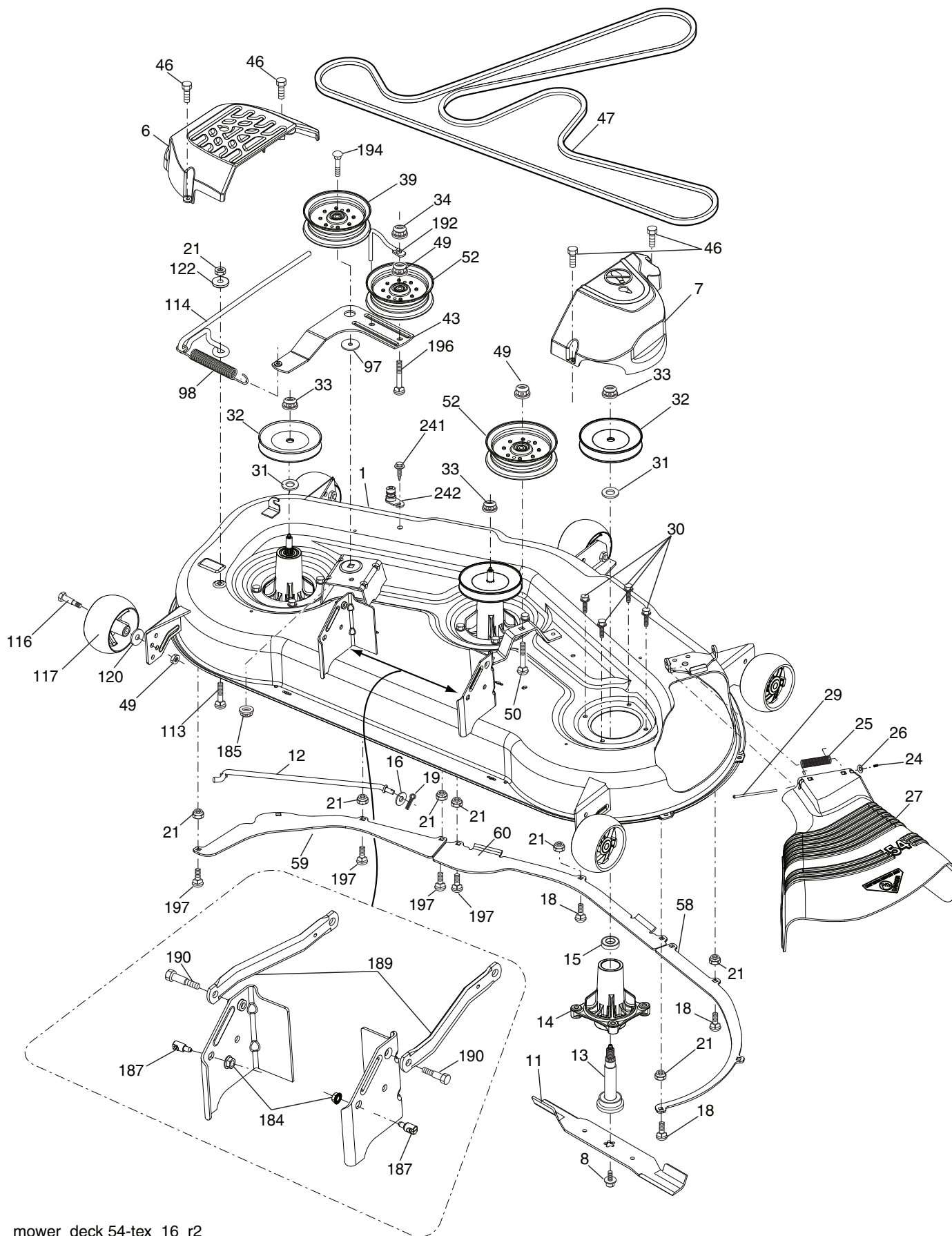
steering-tex\_HUSQSR\_37

**TRACTOR - MODELO NO. GT54LS (96043015700), PROD. NO. 960 43 01-57  
ENSAMBLE DE LA DIRECCIÓN**

| <b>CÓDIGO PIEZA</b> |              |   |
|---------------------|--------------|---|
| <b>No.</b>          | <b>No.</b>   | <b>DESCRIPCIÓN</b>                                  |
| 1                   | 532 43 97-40 | Volante de dirección                                |
| 2                   | 532 19 59-68 | Ensamble del eje delantero                          |
| 4                   | 532 40 30-89 | Ensamble del husillo izquierdo                      |
| 5                   | 532 40 30-90 | Ensamble del husillo derecho                        |
| 6                   | 532 12 49-31 | Pista del rodamiento para reforzar el impulso       |
| 7                   | 532 12 17-48 | Arandela 25/32 x 1-5/8 x calibre 16                 |
| 8                   | 812 00 00-29 | Abrazadera del aro No. T5304-75                     |
| 9                   | 532 12 12-32 | Tapa del husillo                                    |
| 13                  | 532 12 17-49 | Arandela 25/32 x 1-1/4 x calibre 16                 |
| 14                  | 810 04 06-00 | Arandela 3/8  |
| 15                  | 873 54 06-00 | Tuerca 3/8-24 unf                                   |
| 16                  | 532 40 82-19 | Eje de dirección                                    |
| 19                  | 532 19 47-29 | Placa de dirección                                  |
| 21                  | 532 18 67-37 | Adaptador del volante de dirección                  |
| 22                  | 532 42 05-37 | Soporte   |
| 26                  | 532 43 97-43 | Inserto del volante de dirección                    |
| 28                  | 817 00 06-12 | Tornillo 3/8-16 x 3/4                               |
| 35                  | 532 19 47-32 | Engranaje del sector de la placa                    |
| 45                  | 819 18 38-12 | Arandela 9/16 x 2-3/8 x calibre 12                  |
| 50                  | 873 90 06-00 | Tuerca 3/8-16 unc                                   |
| 51                  | 873 94 08-00 | Tuerca 1/2-20 unf                                   |
| 53                  | 532 18 89-67 | Arandela .793 x 1.637 x .060                        |
| 54                  | 874 76 06-36 | Perno 3/8-16 unc x 2-1/4                            |
| 55                  | 532 41 47-36 | Espaciador  |
| 57                  | 532 19 72-46 | Tope superior del soporte                           |
| 58                  | 532 19 47-47 | Perno   |
| 59                  | 532 19 47-48 | Arandela  |
| 60                  | 873 97 10-00 | Tuerca 5/8-11                                       |
| 61                  | 532 19 47-40 | Barra de acoplamiento izquierda                     |
| 62                  | 532 19 47-41 | Barra de acoplamiento derecha                       |
| 63                  | 817 00 05-12 | Tornillo 5/16-18 x 3/4                              |
| 64                  | 532 19 98-49 | Abrazadera de retención del resorte de la dirección |
| 65                  | 532 19 47-34 | Soporte delantero del eje                           |
| 66                  | 871 02 07-48 | Perno 7/16-14 x 3                                   |
| 67                  | 532 19 47-37 | Buje  |
| 68                  | 873 90 07-00 | Tuerca 7/16-14 Gr. 5                                |
| 69                  | 532 19 91-62 | Arandela 1.5 x .505 x .118                          |
| 70                  | 532 19 61-97 | Soporte   |
| 78                  | 532 05 70-79 | Arandela  |
| 122                 | 532 44 49-62 | Tapa  |

**NOTA:** Las dimensiones de todos los componentes están expresadas en pulgadas americanas. 1 pulgada = 25,4 mm

TRACTOR - MODELO NO. GT54LS (96043015700), PROD. NO. 960 43 01-57  
PLATAFORMA DE LA CORTADORA DE CÉSPED



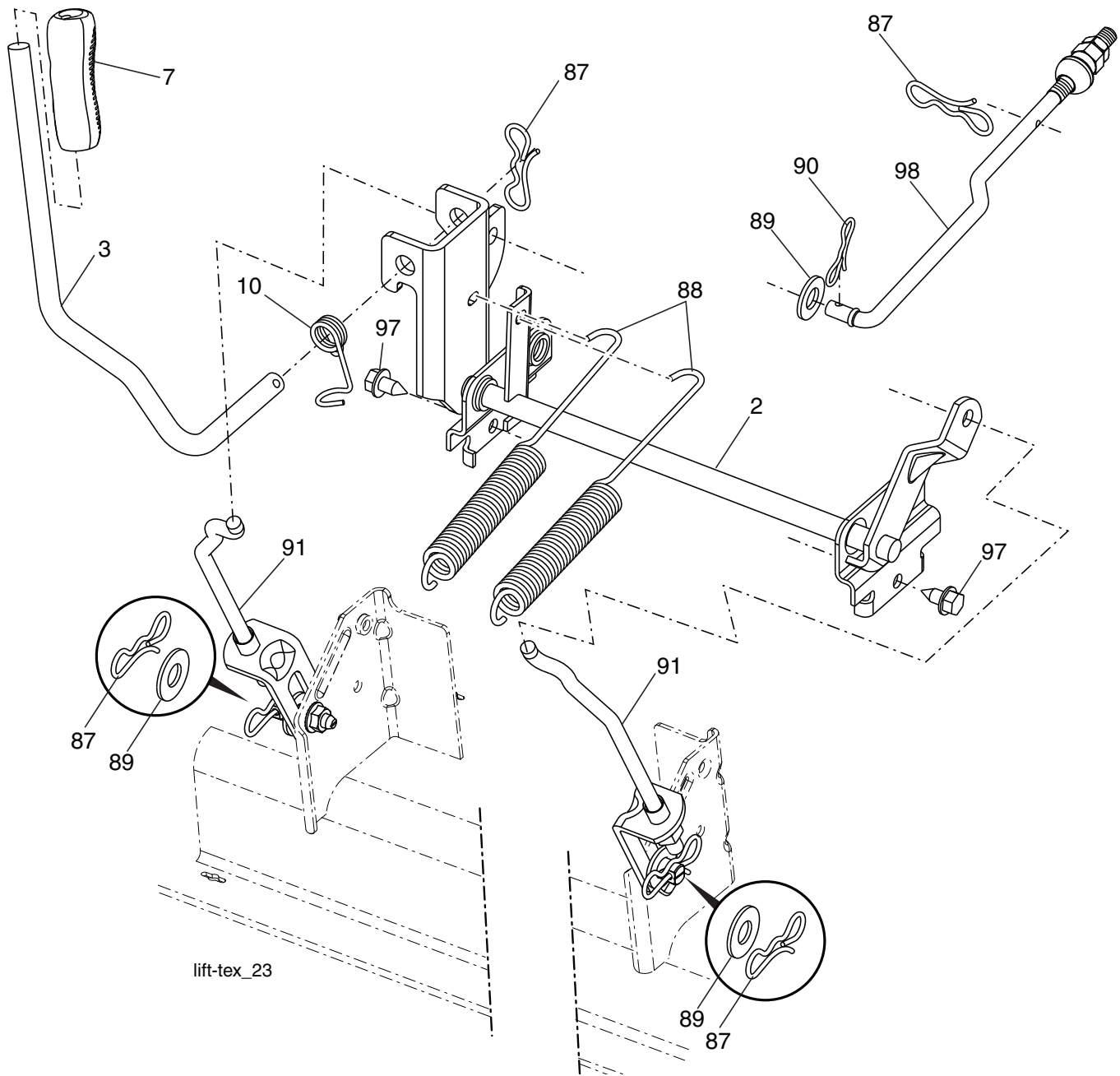
**TRACTOR - MODELO NO. GT54LS (96043015700), PROD. NO. 960 43 01-57  
PLATAFORMA DE LA CORTADORA DE CÉSPED**

| <b>CÓDIGO NO.</b> | <b>PIEZA NO.</b> | <b>DESCRIPCIÓN</b>  | <b>CÓDIGO NO.</b> | <b>PIEZA NO.</b> | <b>DESCRIPCIÓN</b>  |
|-------------------|------------------|---|-------------------|------------------|---|
| 1                 | 532 44 50-61     | Plataforma de la Cortadora de Césped                        | 58                | 532 18 73-42     | Chicane (LD)  |
| 6                 | 532 19 60-66     | Cubierta Izquierda del Mandril                              | 59                | 532 18 73-44     | Chicane (LI)  |
| 7                 | 532 19 71-81     | Cubierta Derecha del Mandril                                | 60                | 532 18 76-07     | Chicane Central   |
| 8                 | 532 19 30-03     | Ensamble del Perno 7/16                                     | 97                | 532 17 85-15     | Arandela  |
| 11                | 532 18 72-56     | Cuchilla  | 98                | 532 19 61-05     | Resorte   |
| 12                | 532 40 48-51     | Varilla   | 113               | 872 11 05-08     | Perno 5/16-18 x 3/4   |
| 13                | 532 18 72-91     | Ensamble del eje  | 114               | 532 18 75-56     | Varilla   |
| 14                | 532 18 72-81     | Carcasa del mandril   | 116               | 532 19 34-06     | Perno de Tope   |
| 15                | 532 11 04-85     | Rodamiento de bolas del mandril                             | 117               | 532 17 48-73     | Rueda Calibradora   |
| 16                | 819 13 13-12     | Arandela, 13/32 x 13/16 x Calibre 12                        | 120               | 819 13 20-12     | Arandela, 13/32 x 1-1/4 x Calibre 12  |
| 18                | 872 14 05-05     | Perno 5/16-18 x 5/8   | 122               | 532 18 75-57     | Buje  |
| 19                | 532 19 42-08     | Pasador de Chaveta de 5/16 con Bloqueo en Forma de Mariposa | 184               | 873 90 05-00     | Tuerca  |
| 21                | 873 68 05-00     | Tuerca Corona de Presión de 5/16-18 unc                     | 185               | 873 90 07-00     | Tuerca 7/16-14 Gr. 5  |
| 24                | 532 10 53-04     | Tapa de la Manga  | 187               | 532 19 51-61     | Sujetador del travesaño   |
| 25                | 532 17 81-02     | Resorte de Torsión  | 189               | 532 19 51-85     | Brazo de la Suspensión  |
| 26                | 532 11 04-52     | Tuerca  | 190               | 532 19 65-39     | Perno con Resalto   |
| 27                | 532 18 89-38     | Protector del Deflector                                     | 192               | 532 19 84-68     | Fijador de la Correa  |
| 29                | 532 13 14-91     | Varilla de la Bisagra                                       | 194               | 874 49 07-36     | Perno Hex Washhead 7/16   |
| 30                | 532 17 39-84     | Tornillo, Arandela  | 196               | 872 14 06-20     | Perno 3/8-16 x 2-1/2 Gr. 5  |
| 31                | 532 18 76-90     | Arandela del separador                                      | 197               | 872 14 05-08     | Perno 5/16-18 unc x 1   |
| 32                | 532 15 35-35     | Polea del Mandril   | 241               | 532 15 29-27     | Tornillo, TT #10-32.5 3/8   |
| 33                | 532 40 02-34     | Tuerca  | 242               | 532 41 55-98     | Puerto De Lavado De La Cubierta   |
| 34                | 873 68 06-00     | Tuerca de Seguridad de Brida 3/8-16 unc                     | - - -             | 532 41 64-05     | Accesorio del conexión  |
| 39                | 532 19 73-80     | Polea loca  | - - -             | 532 18 72-92     | Ensamble del Mandril (solo incluye la carcasa (#14), el ensamble del eje (#13) y el rodamiento (#15); no incluye la polea/tuerca/arandela ni los pernos/arandelas de la cuchilla) |
| 43                | 532 19 60-65     | Brazo de la Polea   | - - -             | 532 41 82-29     | Reemplazo de la cortadora de césped, completa   |
| 46                | 532 13 77-29     | Tornillo, 1/4-20 x 5/8                                      |                   |                  |   |
| 47                | 532 19 61-03     | Correa  |                   |                  |   |
| 49                | 873 90 06-00     | Tuerca de Presión C/Aislamiento de 3/8-16 UNC               |                   |                  |   |
| 50                | 872 11 06-16     | Perno 3/8-16 unc x 2  |                   |                  |   |
| 52                | 532 19 73-79     | Polea loca  |                   |                  |   |

**NOTA:** Las dimensiones de todos los componentes están expresadas en pulgadas americanas. 1 pulgada = 25,4 mm



**TRACTOR - MODELO NO. GT54LS (96043015700), PROD. NO. 960 43 01-57**  
**ELEVACIÓN DE LA CORTADORA DE CÉSPED**



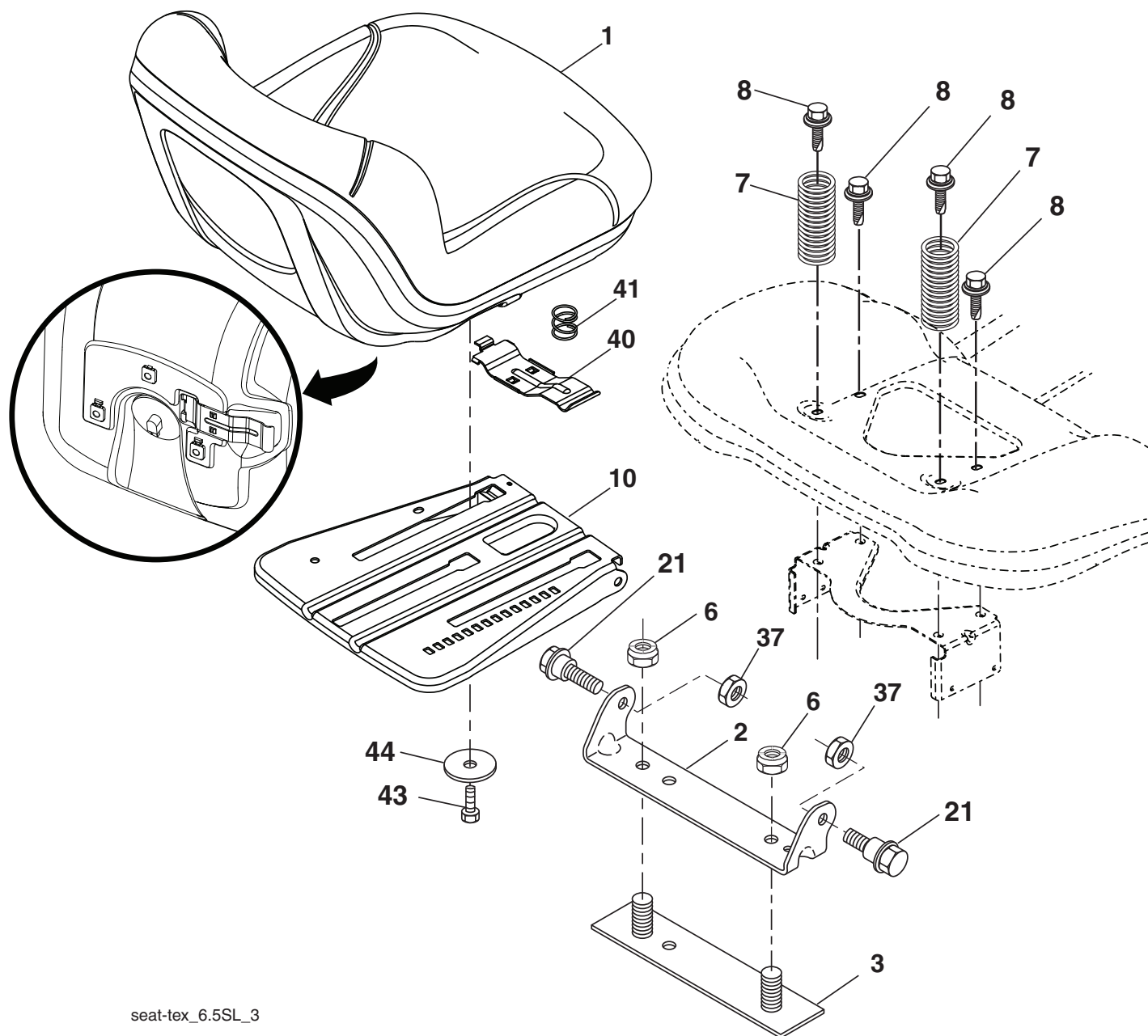
| CÓDIGO NO. | PIEZA NO.    | DESCRIPCIÓN   |
|------------|--------------|---|
| 2          | 532 42 20-27 | Ensamble del eje de la elevación                            |
| 3          | 532 19 52-31 | Ensamble de la palanca de elevación derecha                 |
| 7          | 580 96 23-01 | Mango de la palanca   |
| 10         | 532 19 63-14 | Resorte de torsión  |
| 87         | 532 19 42-09 | Pasador de chaveta de 7/16 con bloqueo en forma de mariposa |
| 88         | 532 41 07-10 | Resorte de ayuda de la elevación                            |
| 89         | 819 19 19-12 | Arandela de zinc transparente                               |

| CÓDIGO NO. | PIEZA NO.    | DESCRIPCIÓN  |
|------------|--------------|--|
| 90         | 532 19 42-08 | Pasador de chaveta de 5/16 con bloqueo en forma de mariposa    |
| 91         | 532 40 34-07 | Ensamble del acoplamiento Elevación trasera                    |
| 97         | 817 00 06-12 | Tornillo de 3/8-16 x 0,75                                      |
| 98         | 532 19 52-64 | Acoplamiento frontal de la elevación de la cortadora de césped |

**NOTA:** Las dimensiones de todos los componentes están expresadas en pulgadas americanas. 1 pulgada = 25,4 mm



**TRACTOR - MODELO NO. GT54LS (96043015700), PROD. NO. 960 43 01-57  
ENSAMBLE DEL ASIENTO**



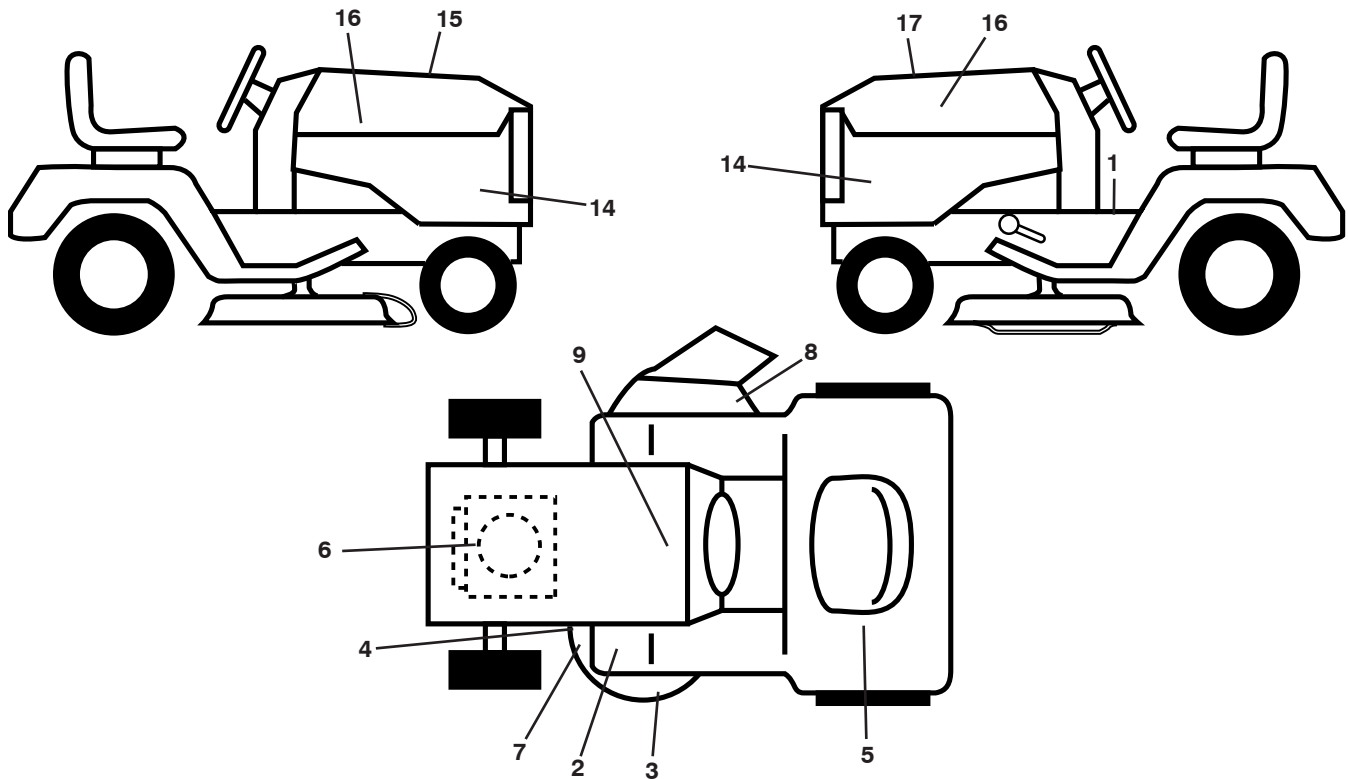
seat-tex\_6.5SL\_3

| CÓDIGO No. | PIEZA No.    | DESCRIPCIÓN                                   |
|------------|--------------|---|
| 1          | 532 44 32-63 | Asiento                                       |
| 2          | 532 18 01-66 | Soporte pivotante del guardabarros            |
| 3          | 532 14 06-75 | Conector del ensamble del guardabarros        |
| 6          | 873 80 06-00 | Tuerca de presión c/aislamiento de 3/8-16 UNC |
| 7          | 532 12 41-81 | Resorte del asiento                           |
| 8          | 532 17 18-77 | Bolt 5/16-18 unc x 3/4 w/Sems                 |
| 10         | 532 19 69-77 | Pan, Seat                                     |
| 21         | 532 17 18-52 | Bandeja del asiento                           |

| CÓDIGO No. | PIEZA No.    | DESCRIPCIÓN   |
|------------|--------------|---|
| 37         | 873 80 05-00 | Tuerca de presión de 5/16-18 UNC                        |
| 40         | 532 43 98-71 | Manija para deslizar el asiento                         |
| 41         | 532 19 82-00 | Resorte para trabar el asiento                          |
| 43         | 874 76 06-12 | Perno de cabeza hexagonal con aleta de 3/8-16 UNC x 3/4 |
| 44         | 819 13 38-12 | Arandela de 13/32 x 2-3/8 calibre 12                    |

**NOTA:** Las dimensiones de todos los componentes están expresadas en pulgadas americanas. 1 pulgada = 25,4 mm

**TRACTOR - MODELO NO. GT54LS (96043015700), PROD. NO. 960 43 01-57  
CALCOMANÍAS**



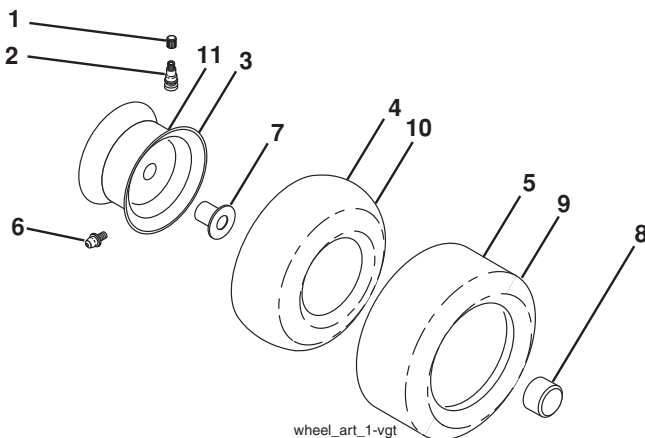
**CÓDIGO PIEZA**

| No. | No.          | DESCRIPCIÓN                                  |
|-----|--------------|--|
| 1   | 581 57 89-01 | Calcomanía para el guardabarros del operador |
| 2   | 532 41 86-00 | Calcomanía del pedal                         |
| 3   | 532 44 81-21 | Calcomanía                                   |
| 4   | 581 58 00-02 | Calcomanía                                   |
| 5   | 581 72 42-01 | Calcomanía para advertencia                  |
| 6   | 532 43 29-18 | Calcomanía para el motor H.P.                |
| 7   | 581 72 45-02 | Calcomanía precaución                        |
| 8   | 581 57 95-01 | Calcomanía advertencia                       |
| 9   | 532 14 50-05 | Calcomanía de Peligro/Punto de interconexión |

**CÓDIGO PIEZA**

| No. | No.          | DESCRIPCIÓN                          |
|-----|--------------|--------------------------------------|
| 14  | 581 76 49-01 | Calcomanía para el panel lateral     |
| 15  | 532 42 38-29 | Calcomanía del cliente               |
| 16  | 581 62 73-01 | Calcomanía para la capota            |
| 17  | 581 75 93-01 | Calcomanía de reemplazo              |
| --  | 581 72 48-01 | Calcomanía para la desviación        |
| --  | 532 43 98-82 | Forro del apoyo para los pies (LI)   |
| --  | 532 43 98-81 | Forro del apoyo para los pies (LD)   |
| --  | 115 54 48-27 | Manual de Operario (Inglés/Español)  |
| --  | 581 77 64-27 | Manual de Repuestos (Inglés/Español) |

**RUEDAS Y NEUMÁTICOS**



**CÓDIGO PIEZA**

| No. | No.          | DESCRIPCIÓN  |
|-----|--------------|--|
| 1   | 532 05 91-92 | Tapa de la válvula del neumático                       |
| 2   | 532 06 51-39 | Vástago de la válvula                                  |
| 3   | 532 18 18-39 | Ensamble de las llantas delanteras                     |
| 4   | 532 00 81-34 | Cámara delantera (Mantenimiento sólo)                  |
| 5   | 532 16 10-24 | Neumático delantero                                    |
| 6   | 532 12 49-57 | Accesorio para engrasar (solo para la rueda delantera) |
| 7   | 532 12 49-59 | Rodamiento de la brida (solo para la rueda delantera)  |
| 8   | 532 17 50-39 | Tapa del eje   |
| 9   | 532 17 04-53 | Neumático trasero                                      |
| 10  | 532 00 71-54 | Cámara trasera (Mantenimiento sólo)                    |
| 11  | 532 14 45-10 | Ensamble trasero de la llanta                          |
| --  | 532 14 43-34 | Sellador para neumáticos (tubo de 10 onzas [283 gr])   |

**NOTA:** Las dimensiones de todos los componentes están expresadas en pulgadas americanas. 1 pulgada = 25,4 mm

---

# SERVICE NOTES/AVISO

---

**02/25/2013 SR/TH**