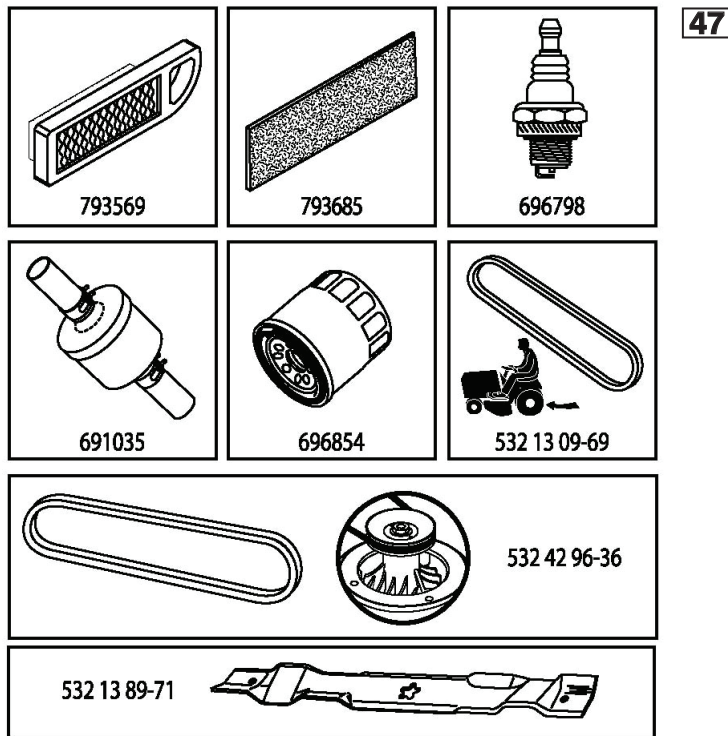


ILLUSTRATED PARTS LIST

MODEL NO. 96041023603

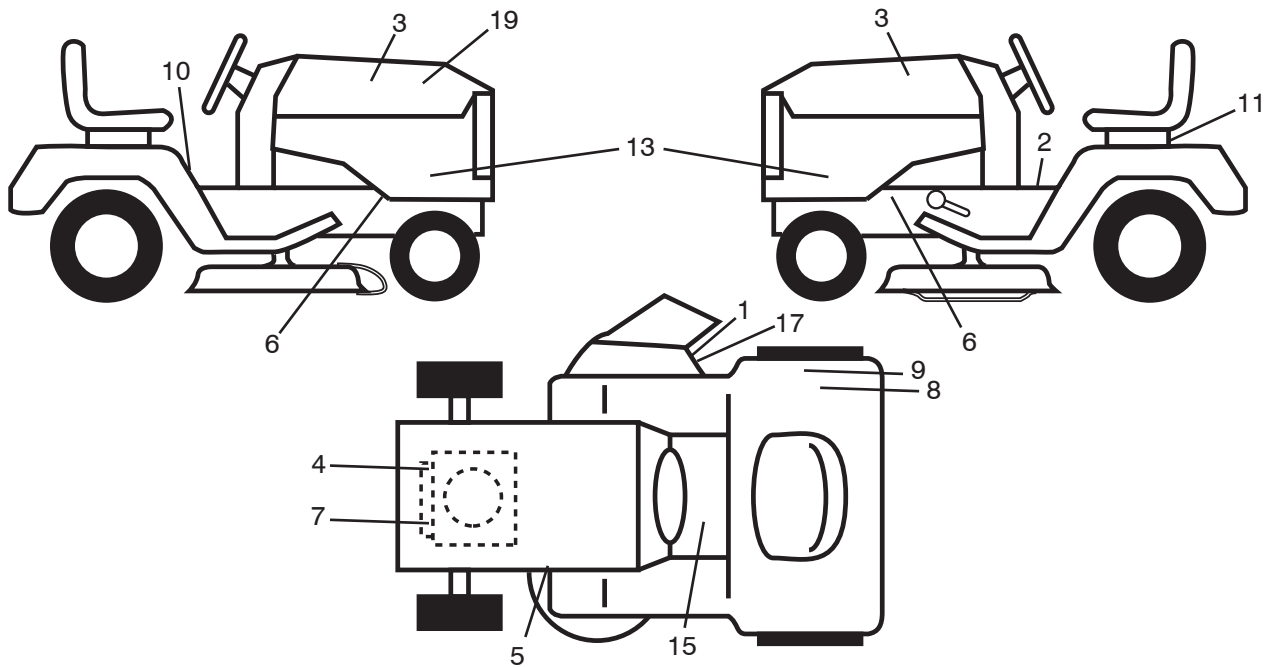
CUSTOMER CATALOG NO. LTH2142DR

PRODUCT NO. 960 41 02-36



443836

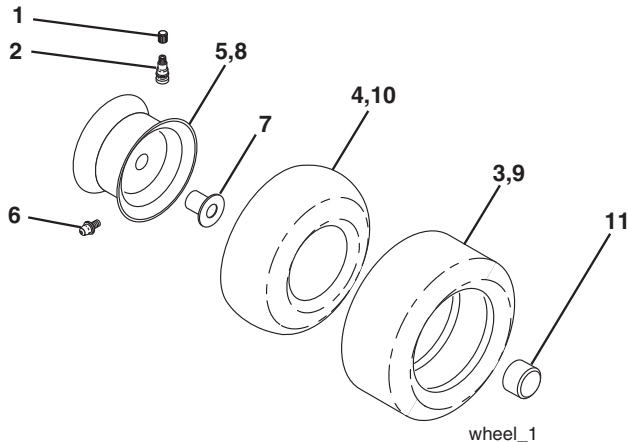
**TRACTOR -- MODEL NO. LTH2142DR (96041023603), PRODUCT NO. 960 41 02-36
DECALS 27**



| KEY NO. | PART NO. | DESCRIPTION |
|---------|--------------|------------------------------|
| 1 | 584 90 46-01 | Decal, Deck/Deflect. Warning |
| 2 | 581 57 80-01 | Decal, Brake Parking Sandle |
| 3 | 581 62 73-01 | Decal, Hood |
| 4 | 581 57 97-01 | Decal, Warning Engine |
| 5 | 581 58 00-01 | Decal, V-Belt Sch. |
| 6 | 581 57 96-01 | Decal, Chassis Hot Muffler |
| 7 | 587 21 60-01 | Decal, Engine |
| 8 | 581 72 41-03 | Decal, Tickmark |
| 9 | 581 72 41-02 | Decal, 80 DBA |
| 10 | 581 57 81-01 | Decal, Warning Symbols CE |

| KEY NO. | PART NO. | DESCRIPTION |
|---------|--------------|------------------------------|
| 11 | 532 14 50-05 | Decal, Bat Dan/Poi P/L Sym |
| 13 | 532 44 44-62 | Decal, Sidepnl |
| 15 | 581 72 40-01 | Decal, Brake/Clutch Symbol |
| 17 | 581 57 92-01 | Decal, Cutfinger Warning |
| 19 | 532 44 38-36 | Decal, Replacement |
| -- | 581 72 46-01 | Decal, Drawbar Load Limit |
| -- | 581 72 48-01 | Decal, Bypass LT Hydro |
| -- | 532 43 96-81 | Pad, Footrest LH |
| -- | 532 43 96-82 | Pad, Footrest RH |
| -- | 587 23 80-26 | Manual, Operator's (English) |

WHEELS & TIRES



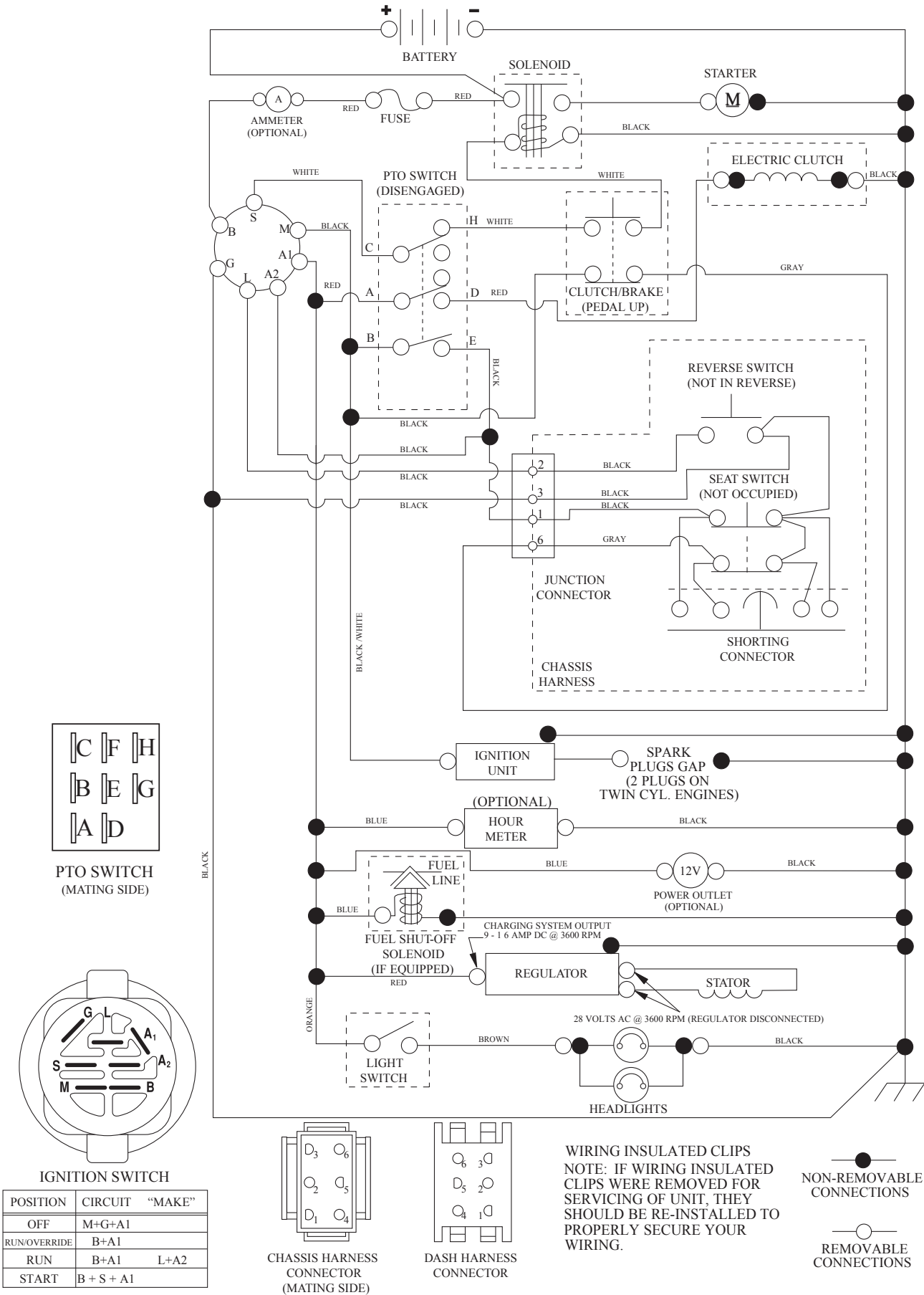
| KEY NO. | PART NO. | DESCRIPTION |
|---------|--------------|-----------------------------------|
| 1 | 532 05 91-92 | Cap Valve Tire |
| 2 | 532 06 51-39 | Stem Valve |
| 3 | 532 10 62-22 | Tire Front 15 x 6-6 |
| 4 | 532 05 99-04 | Tube Front (Service Item Only) |
| 5 | 532 13 83-36 | Rim Asm 6" Front Silver Service |
| 6 | 532 12 49-57 | Fitting Grease (Front Wheel Only) |
| 7 | 532 12 49-59 | Bearing Flange (Front Wheel Only) |
| 8 | 532 13 83-37 | Rim Asm 8" Rear Silver Service |
| 9 | 532 12 20-82 | Tire Rear 20 x 10-8 |
| 10 | 532 12 49-26 | Tube Rear (Service Item Only) |
| 11 | 532 17 50-39 | Cap Axle Blk 1 50 x 1 00 |
| -- | 532 14 43-34 | Sealant, Tire (10 oz. tube) |

NOTE: All component dimensions given in U.S. inches
1 inch = 25.4 mm

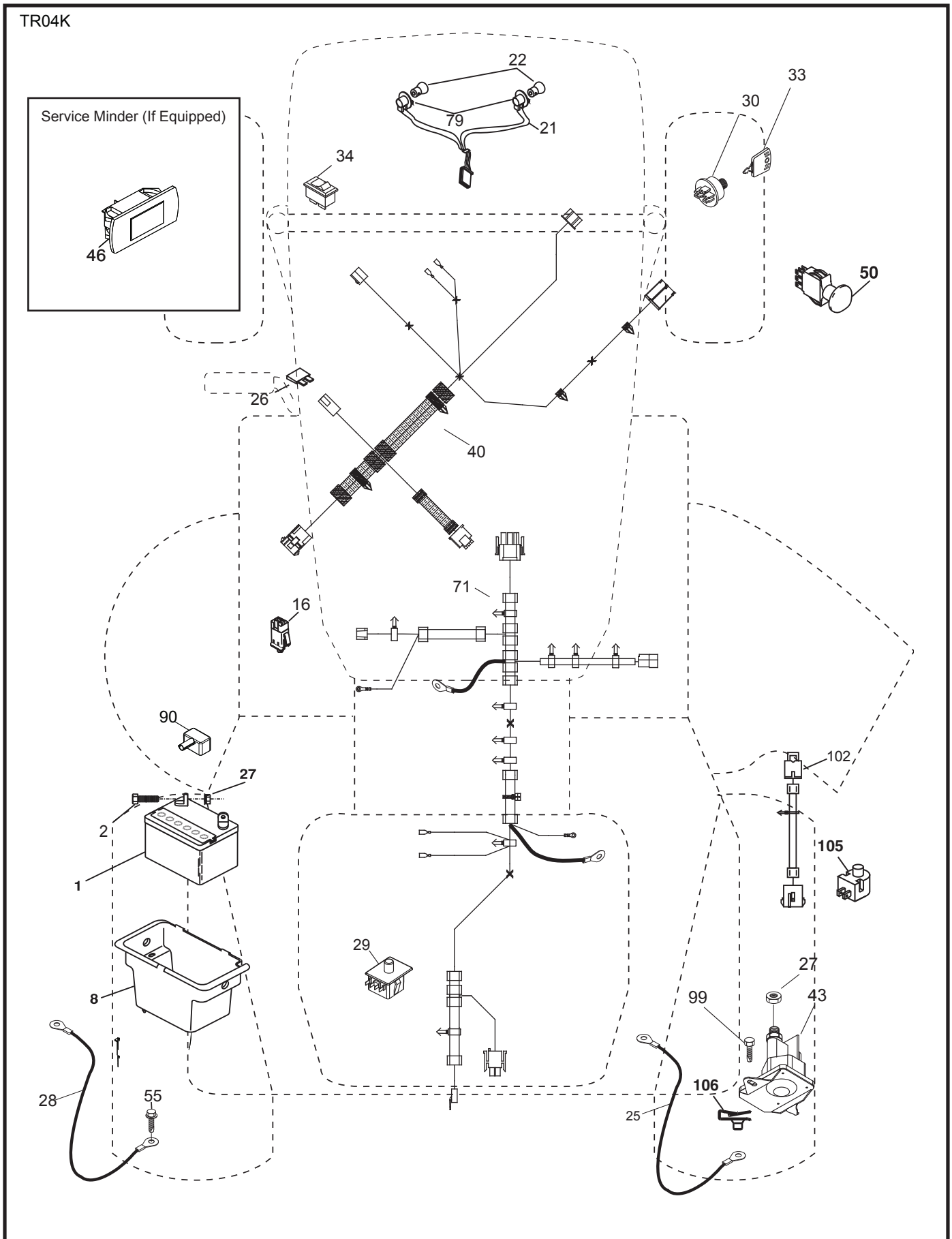
TRACTOR - - MODEL NO. LTH2142DR (96041023603), PRODUCT NO. 960 41 02-36

SCHEMATIC **38**

SCH12



TRACTOR -- MODEL NO. LTH2142DR (96041023603), PRODUCT NO. 960 41 02-36
 ELECTRICAL **32**

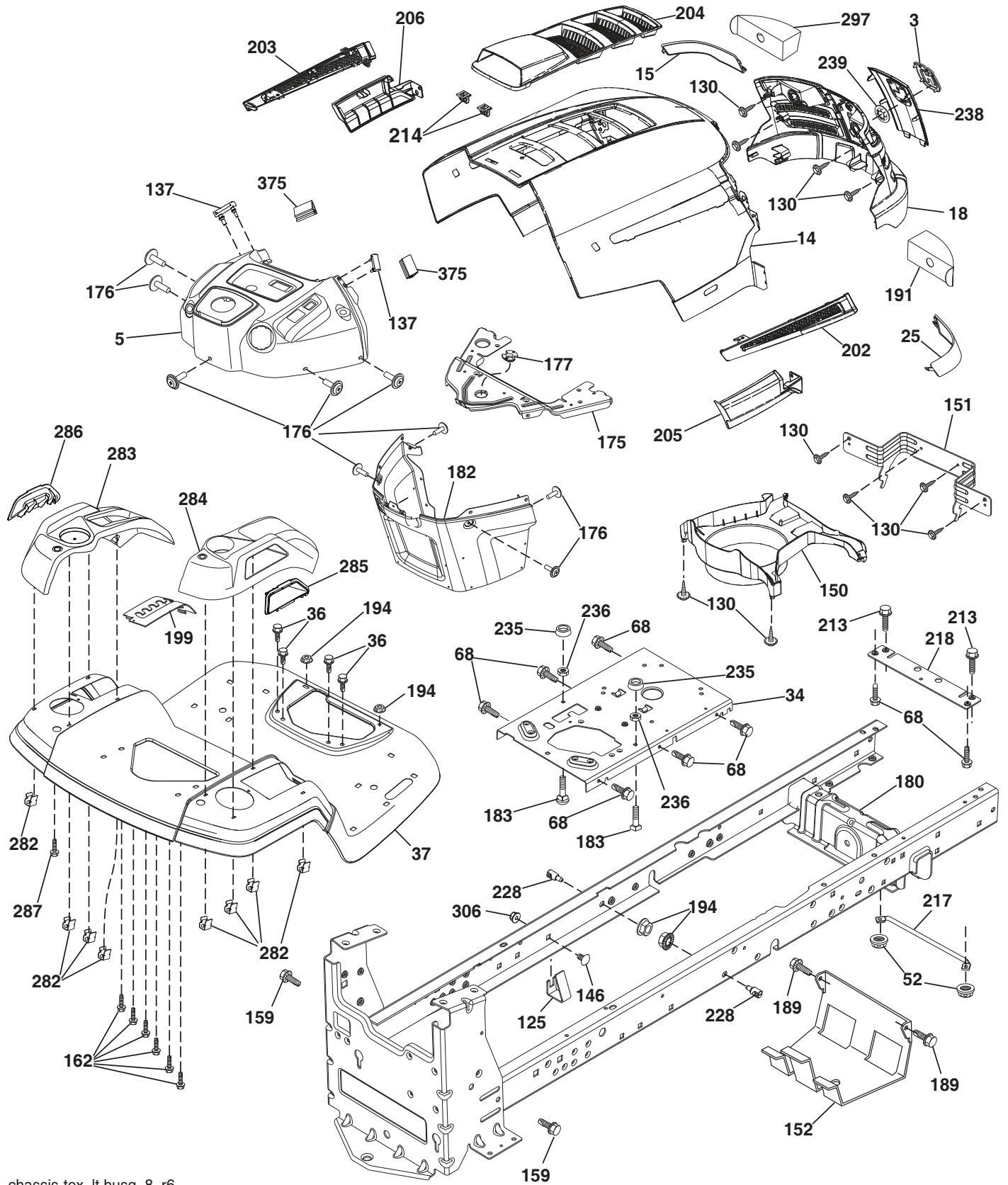


**TRACTOR - - MODEL NO. LTH2142DR (96041023603), PRODUCT NO. 960 41 02-36
ELECTRICAL 32**

| KEY NO. | PART NO. | DESCRIPTION |
|----------------|-----------------|----------------------------------|
| 1 | 532 16 34-65 | Battery |
| 2 | 874 76 04-12 | Bolt Hex Head 1/4-20 x 3/4 |
| 8 | 532 19 32-28 | Box Battery |
| 16 | 532 17 61-38 | Switch Interlock Push-In |
| 21 | 532 40 02-52 | Harness Socket Light W/4152J |
| 22 | 532 00 41-52 | Bulb Light |
| 25 | 581 49 80-01 | Cable Starter |
| 26 | 532 17 51-58 | Fuse |
| 27 | 873 51 04-00 | Nut Keps Hex 1/4-20 unc |
| 28 | 532 42 16-86 | Cable, Ground |
| 29 | 532 40 15-45 | Switch, Seat |
| 30 | 532 19 33-50 | Switch, Ign |
| 33 | 532 41 19-33 | Key/Chain |
| 34 | 532 11 07-12 | Switch Light / Reset |
| 40 | 581 02 32-01 | Harness Ign. Dash/Lift |
| 43 | 532 19 25-07 | Solenoid |
| 46 | 586 16 18-01 | Gauge SRVC MNDR |
| 50 | 532 17 46-51 | Switch PTO |
| 55 | 817 06 05-12 | Screw Thdrol 5/16-18 x 3/4 TYTT |
| 71 | 581 02 30-01 | Harness Ign. Chassis/Lift |
| 79 | 532 17 52-42 | Socket Asm |
| 90 | 532 43 53-95 | Cover Terminal |
| 99 | 817 67 04-12 | Screw Hexwsh |
| 102 | 532 40 44-54 | Harness Pigtail Tex ROS Tufftorq |
| 105 | 532 40 75-68 | Switch Reverse |
| 106 | 532 17 48-14 | Palnut 1/4 Lugs |

NOTE: All component dimensions given in U.S. inches
1 inch = 25.4 mm

TRACTOR -- MODEL NO. LTH2142DR (96041023603), PRODUCT NO. 960 41 02-36
CHASSIS AND ENCLOSURES **39**



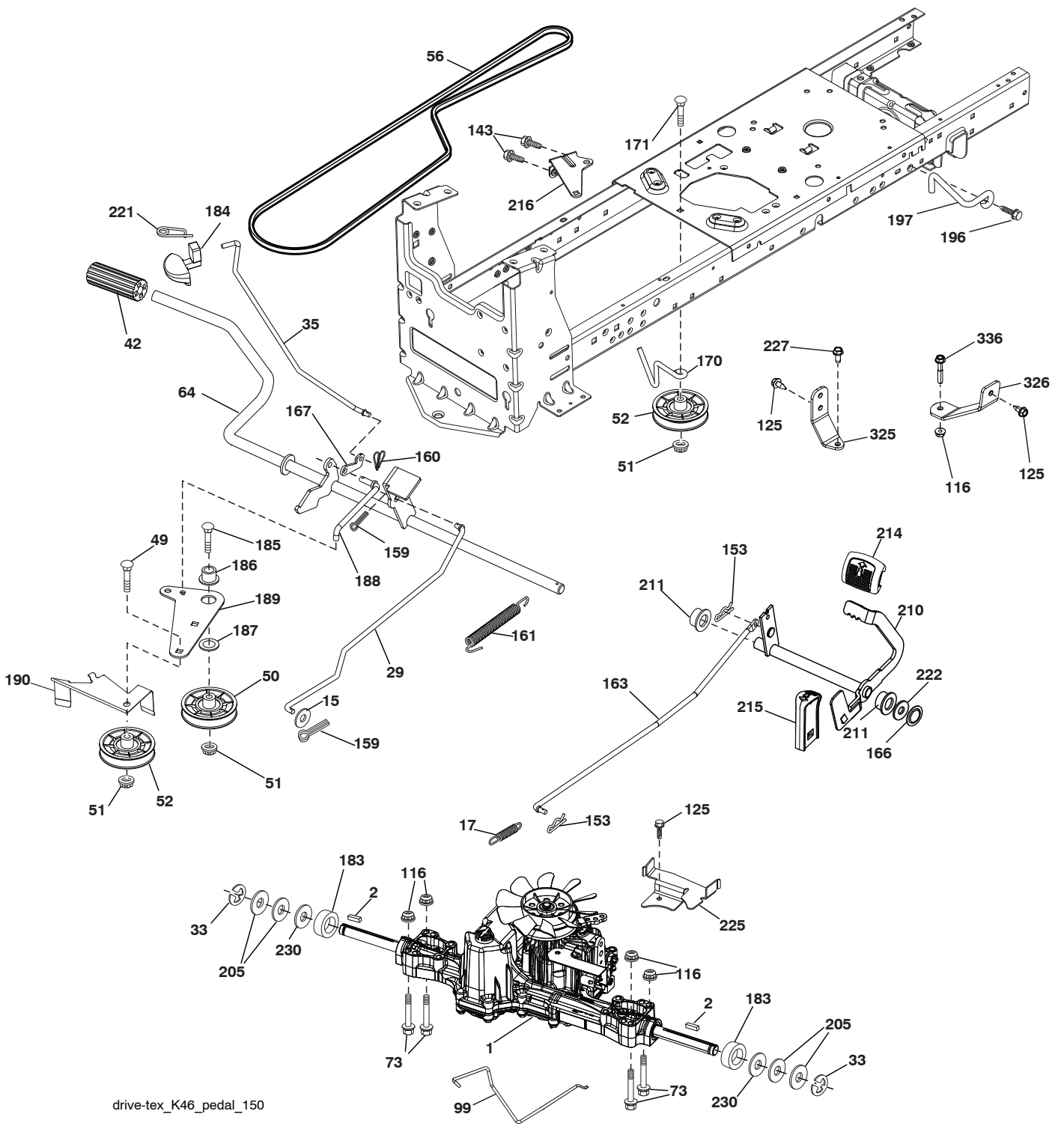
chassis-tex_lt husq_8_r6

**TRACTOR - - MODEL NO. LTH2142DR (96041023603), PRODUCT NO. 960 41 02-36
CHASSIS AND ENCLOSURES 39**

| KEY NO. | PART NO. | DESCRIPTION | KEY NO. | PART NO. | DESCRIPTION |
|------------|--------------|---------------------------------|------------|--------------|---------------------------------|
| 3 | 581 05 63-01 | Logo | 203 | 532 44 13-43 | Vent Side Hood LH |
| 5 | 532 43 89-66 | Dash | 204 | 532 44 13-75 | Vent Top Hood |
| 14 | 532 44 12-67 | Hood | 205 | 532 44 13-44 | Skirt Side RH |
| 15 | 532 44 14-28 | Lens LH | 206 | 532 44 13-45 | Skirt Side LH |
| 18 | 532 44 13-68 | Grille | 213 | 874 76 05-12 | Bolt 5/16-18 x 3/4 |
| 25 | 532 44 14-27 | Lens RH | 214 | 532 19 91-45 | Clip Retainer |
| 34 | 580 91 08-01 | Plate Engine | 217 | 532 40 91-67 | Rod Pivot Hood |
| 36 | 817 06 05-12 | Screw 5/16-18 x 3/4 | 218 | 532 19 63-95 | X-Piece Hood Stop |
| 37 | 532 44 12-66 | Fender | 228 | 532 19 51-61 | Stud Fastener |
| 52 | 873 68 05-00 | Nut Crown Lock 5/16 | 235 | 532 40 61-29 | Spacer Fender |
| 68 | 817 49 05-08 | Screw THDROL 5/16-18 x 1/2 | 236 | 873 93-05-00 | Nut Lock 5/16-18 unc Center |
| 125 | 581 68 48-01 | Clip Fuel Line | 238 | 532 44 13-74 | Trim |
| 130 | 532 41 63-58 | Screw #10 x 0.750 BOS Thread | 239 | 532 40 48-83 | Clip Tinnerman |
| 137 | 532 40 75-90 | Bumper, Dash | 282 | 532 41 41-10 | Clip Retainer |
| 146 | 581 85 79-01 | Bolt | 283 | 532 44 20-39 | Console Deck Lift |
| 150 | 532 40 66-62 | Air Duct | 284 | 532 43 98-23 | Console Control Pedal |
| 151 | 532 40 78-07 | Bracket Pivot | 285 | 532 41 63-15 | Console Insert RH |
| 152 | 532 19 95-35 | Shield Browning | 286 | 532 41 63-17 | Console Insert LH |
| 159 | 817 00 06-12 | Screw Hex Wsh Thdr 3/8-16 x 3/4 | 287 | 817 60 04-06 | Screw Hex Washhead 1/4-20 x 3/8 |
| 162 | 532 14 24-32 | Screw | 297 | 532 40 66-65 | Insert Reflective LH |
| 175 | 532 19 94-72 | Crossmember | 306 | 873 90 06-00 | Nut Lock |
| 176 | 532 40 07-76 | Screw 10-24 x 5/8 | 375 | 586 90 82-01 | Dash Clip-On Bumper |
| 177 | 532 19 52-28 | Bushing Steering | -- | 532 40 09-44 | Kit Bumper |
| 180 | 532 19 54-57 | Chassis | | | |
| 182 | 532 40 71-76 | Dash Lower | | | |
| 183 | 874 52 05-20 | Bolt 5/16-18 unc x 1-1/4 | | | |
| 189 | 817 00 05-12 | Screw 5/16-18 x 3/4 | | | |
| 191 | 532 41 65-01 | Insert Reflective RH | | | |
| 194 | 873 90 05-00 | Nut Lock Hex Flange 5/16-18 | | | |
| 199 | 532 41 34-85 | Plate Deck Lift | | | |
| 202 | 532 44 13-42 | Vent Side Hood RH | | | |

NOTE: All component dimensions given in U.S. inches
1 inch = 25.4 mm

TRACTOR -- MODEL NO. LTH2142DR (96041023603), PRODUCT NO. 960 41 02-36
 DRIVE **40**



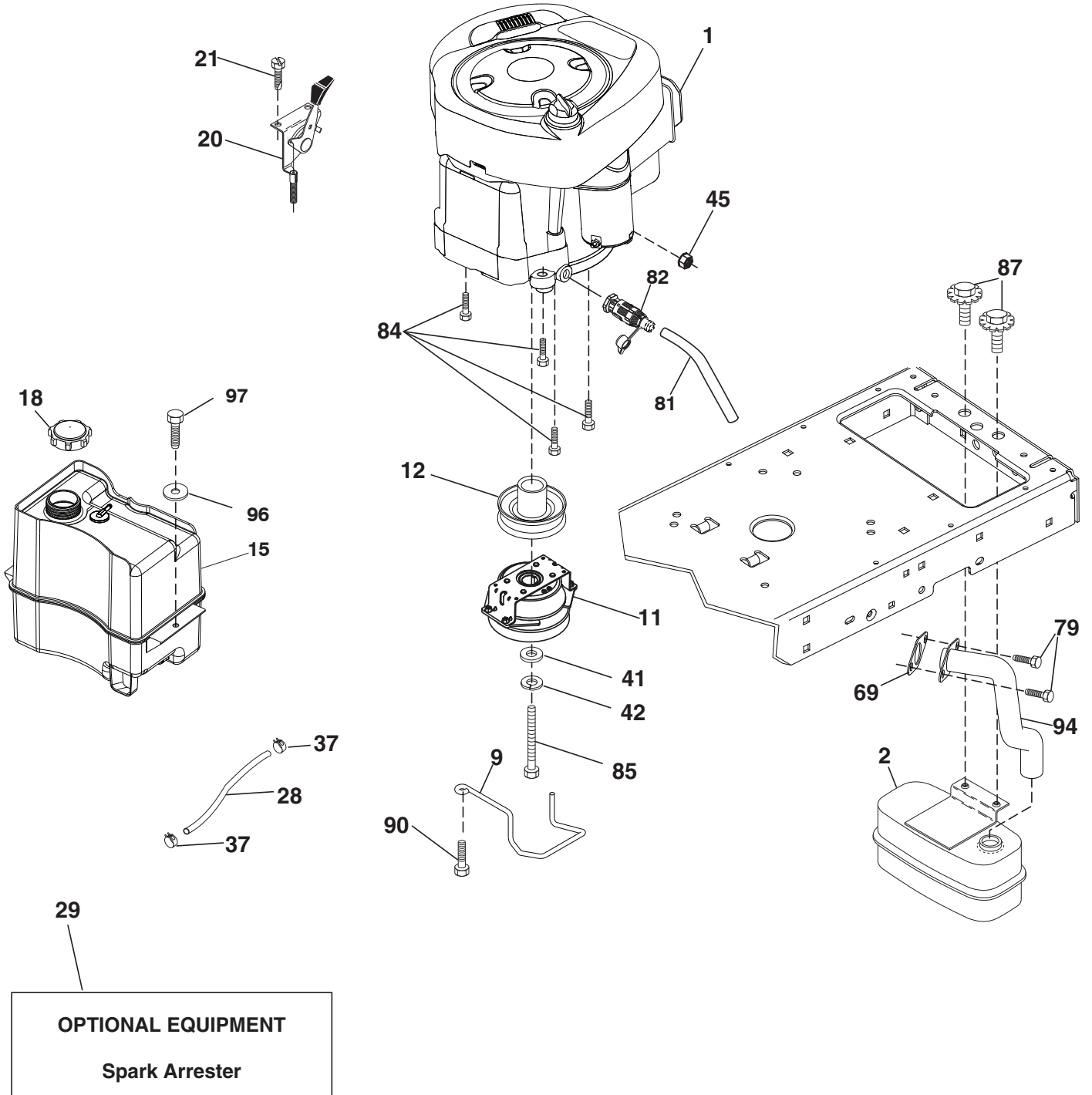
drive-tex_K46_pedal_150

**TRACTOR - - MODEL NO. LTH2142DR (96041023603), PRODUCT NO. 960 41 02-36
DRIVE 40**

| KEY NO. | PART NO. | DESCRIPTION |
|---------|--------------|--|
| 1 | ----- | Transaxle, TUFFTORQ K46 CR (501051401) (Order parts from transaxle manufacturer.) |
| 2 | 532 12 35-83 | Key |
| 15 | 819 13 13-16 | Washer 13/32 x 13/16 x 16 Ga. |
| 17 | 532 41 36-78 | Spring, Brake |
| 29 | 532 40 38-06 | Rod, Brake |
| 33 | 812 00 00-01 | Ring E |
| 35 | 532 40 10-31 | Rod, Brake, Park |
| 42 | 532 12 48-72 | Cover, Foot Pedal |
| 49 | 872 11 06-14 | Bolt |
| 50 | 532 19 43-27 | Pulley Idler Flat |
| 51 | 873 90 06-00 | Lock Nut 3/8-16 |
| 52 | 532 19 43-26 | Idler V-Groove |
| 56 | 532 13 09-69 | V-Belt, Drive |
| 64 | 532 19 78-65 | Shaft Asm. Pedal Brake Control |
| 73 | 874 49 05-40 | Bolt Hex Flghd 5/16-18 Gr. 5 |
| 99 | 532 41 57-42 | Rod Spring Bypass |
| 116 | 873 90 05-00 | Nut Lock Hex Flange 5/16-18 |
| 125 | 817 00 05-12 | Screw 5/16-18 x 3/4 |
| 143 | 817 49 05-08 | Screw 5/16-18 x 1/2 |
| 153 | 532 12 47-88 | Retainer Spring |
| 159 | 876 02 04-12 | Pin Cotter 1/8 x 3/4 |
| 160 | 532 16 94-84 | Retainer Clip |
| 161 | 532 10 57-09 | Spring, Return, Clutch |
| 163 | 532 44 82-75 | Rod Pedal Control |
| 166 | 532 42 91-64 | Nut Push |
| 167 | 532 40 52-57 | Latch Brake Parking |
| 170 | 532 19 43-22 | Keeper Belt Centerspan |
| 171 | 872 11 06-16 | Bolt RDHD SQNK 3/8-16 unc x 2 |
| 183 | 532 13 70-57 | Spacer Split |
| 184 | 532 44 14-07 | Handle Parking Brake |
| 185 | 872 11 06-22 | Bolt RDHD 3/8-16 unc x 2-3/4 Gr. 5 |
| 186 | 532 19 43-21 | Spacer Retainer |
| 187 | 819 13 32-10 | Washer |
| 188 | 582 21 70-01 | Link Clutch Ground Drive, Long |
| 189 | 532 19 43-17 | Bellcrank Ground Drive |
| 190 | 532 19 43-18 | Keeper Bellcrank Ground Drive |
| 196 | 817 00 06-16 | Screw 3/8-16 x 1 |
| 197 | 585 65 86-01 | Link Clutch Anti-Rotation |
| 205 | 532 12 17-48 | Washer |
| 210 | 532 40 09-80 | Rocker Asm. Pedal Control |
| 211 | 532 12 01-83 | Bearing Nylon |
| 214 | 532 42 12-63 | Pedal Forward |
| 215 | 532 40 17-23 | Pedal Reverse |
| 216 | 532 19 61-31 | Bracket Pulley Idler |
| 221 | 532 40 31-87 | Retainer Spring Clip Handle |
| 222 | 879 21 20-10 | Washer 21/32 x 1-1/4 x 10 Ga. |
| 225 | 532 40 33-19 | Keeper Belt Trans. |
| 227 | 817 49 05-12 | Screw Thdrol. 5/16-18 x 3/4 |
| 230 | 532 18 89-67 | Washer Hardened |
| 325 | 585 66 85-02 | Torque Strap K46 LT RH |
| 326 | 585 67 08-02 | Bracket Trq Stp 46 20" Tire RH |
| 336 | 587 25 96-01 | Bolt 5/16-18 x 1-3/4 Flanged |

NOTE: All component dimensions given in U.S. inches
1 inch = 25.4 mm

TRACTOR -- MODEL NO. LTH2142DR (96041023603), PRODUCT NO. 960 41 02-36
ENGINE **24**



engine-tex_BS_105

**TRACTOR - - MODEL NO. LTH2142DR (96041023603), PRODUCT NO. 960 41 02-36
ENGINE 24**

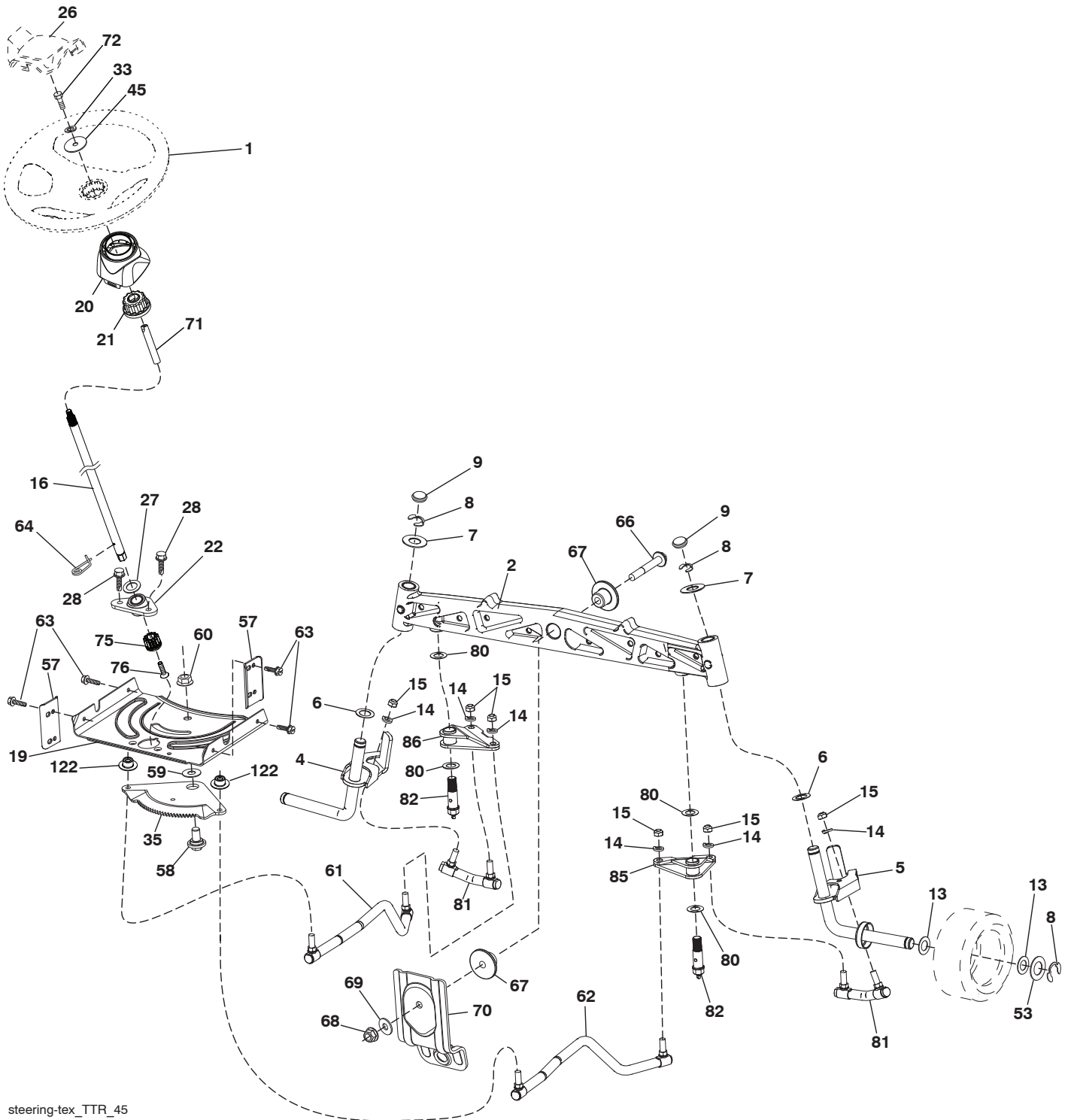
| KEY NO. | PART NO. | DESCRIPTION |
|---------|--------------|---|
| 1 | - - - - - | Engine Briggs 33S877-0016-G1 (587652301) (Order parts from engine manufacturer.) |
| 2 | 580 53 23-01 | Muffler |
| 9 | 584 90 80-01 | Keeper Belt Engine |
| 11 | 587 24 15-01 | Clutch Electric |
| 12 | 532 40 50-97 | Pulley Engine |
| 15 | 581 28 99-01 | Tank Fuel 1.5 |
| 18 | 532 43 02-20 | Cap Fuel |
| 20 | 532 18 38-97 | Control Throttle |
| 21 | 532 41 63-58 | Screw #10 x 0.750 BOS Thread |
| 28 | 532 13 70-40 | Fuel Line |
| 29 | 532 13 71-80 | Spark Arrester Kit |
| 37 | 532 12 34-87 | Clamp Hose |
| 41 | 532 12 61-97 | Washer 1-1/2 OD. x 15/32 ID x 250 |
| 42 | 810 04 07-00 | Wahser Lock Hvy HLCL Spr. 7/16 |
| 45 | 873 51 04-00 | Nut Keps Hex 1/4-20 unc |
| 69 | 532 16 52-91 | Gasket |
| 79 | 532 19 23-34 | Screw Socket HD. 5/16-18 x .75 |
| 81 | 532 14 84-56 | Tube Oil Drain |
| 82 | 532 42 82-87 | Valve Oil Drain |
| 84 | 817 06 06-20 | Screw 3/8-16 x 1 1/4 |
| 85 | 581 33 28-04 | Bolt 7/16-20 x 3.5 Gr. 5 |
| 87 | 532 17 18-77 | Bolt 5/16-18 X 3/4 |
| 90 | 817 00 06-16 | Screw 3/8-16 x 1 |
| 94 | 581 88 09-01 | Tube Exhaust |
| 96 | 819 09 14-16 | Washer 9/32 x 7/8 x 16 Ga. |
| 97 | 817 67 04-12 | Screw 1/4-20 x 3/4 |

NOTE: All component dimensions given in U.S. inches
1 inch = 25.4 mm

Engine Power Rating Information

The gross power rating for individual gas engine models is labeled in accordance with SAE (Society of Automotive Engineers) code J1940 (Small Engine Power & Torque Rating Procedure), and rating performance has been obtained and corrected in accordance with SAE J1995 (Revision 2002-05). Torque values are derived at 3060 RPM; horsepower values are derived at 3600 RPM. Actual gross engine power will be lower and is affected by, among other things, ambient operating conditions and engine-to-engine variability. Given both the wide array of products on which engines are placed and the variety of environmental issues applicable to operating the equipment, the gas engine will not develop the rated gross power when used in a given piece of power equipment (actual "on-site" or net power). This difference is due to a variety of factors including, but not limited to, accessories (air cleaner, exhaust, charging, cooling, carburetor, fuel pump, etc.), application limitations, ambient operating conditions (temperature, humidity, altitude), and engine-to-engine variability. Due to manufacturing and capacity limitations, Briggs & Stratton may substitute an engine of higher rated power for this Series engine.

TRACTOR -- MODEL NO. LTH2142DR (96041023603), PRODUCT NO. 960 41 02-36
STEERING ASSEMBLY **41**



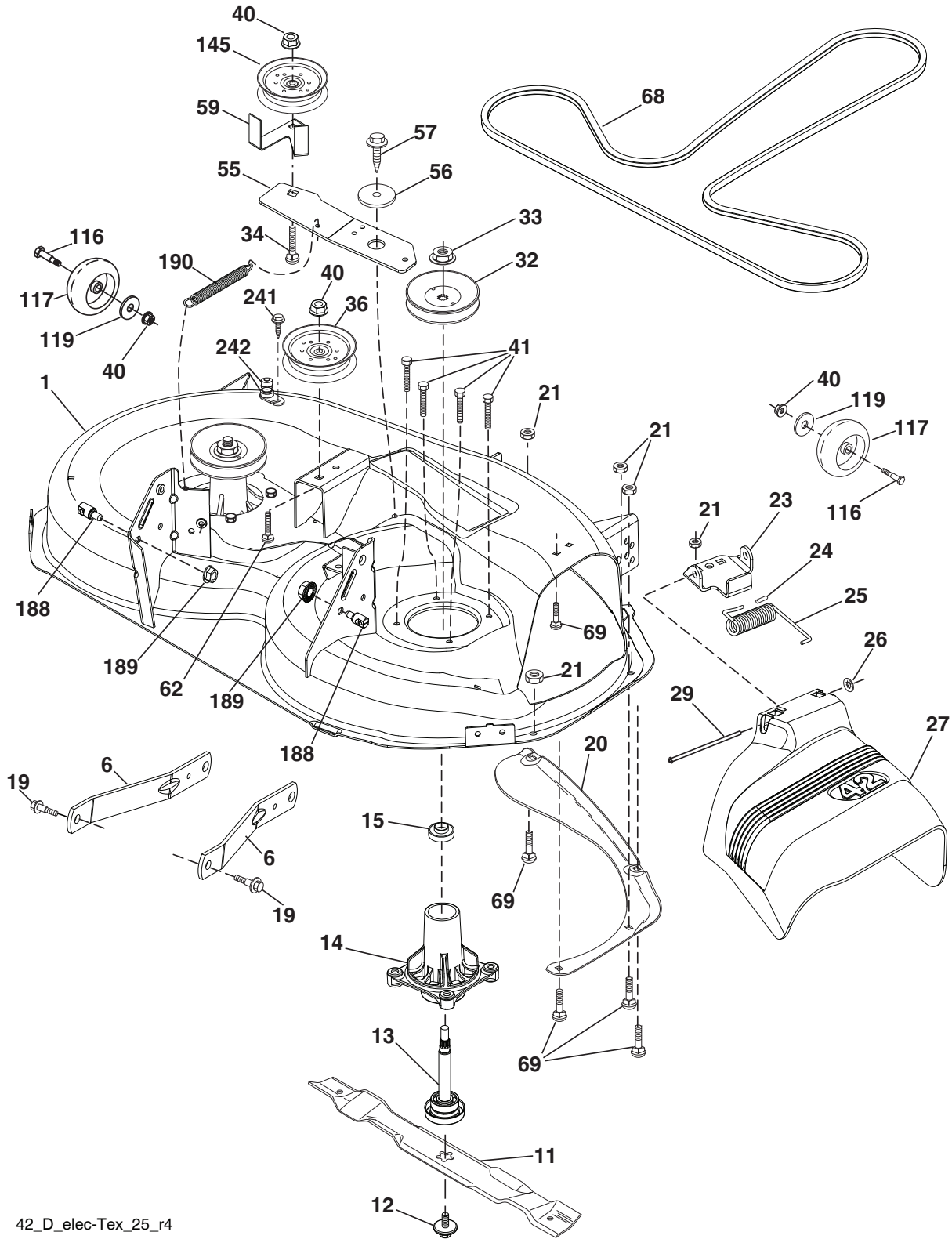
steering-tex_TTR_45

TRACTOR - - MODEL NO. LTH2142DR (96041023603), PRODUCT NO. 960 41 02-36
STEERING ASSEMBLY 41

| KEY NO. | PART NO. | DESCRIPTION |
|---------|--------------|-------------------------------------|
| 1 | 532 43 97-40 | Wheel, Steering |
| 2 | 532 43 68-70 | Axle Asm., Front |
| 4 | 532 43 68-73 | Spindle Asm., LH |
| 5 | 532 43 68-74 | Spindle Asm., RH |
| 6 | 532 12 49-31 | Washer Thrust 0.75 x 1.23 |
| 7 | 532 12 17-48 | Washer 25/32 x 1-5/8 x 16 Ga. |
| 8 | 812 00 00-29 | Ring, Klip #T5304-75 |
| 9 | 532 12 12-32 | Cap, Spindle |
| 13 | 532 12 17-49 | Washer 25/32 x 1-1/4 x 16 Ga. |
| 14 | 810 04 06-00 | Washer, Lock 3/8 |
| 15 | 873 54 06-00 | Nut, Crown Lock 3/8-24 unf |
| 16 | 585 86 92-02 | Shaft Steering |
| 19 | 532 19 47-29 | Plate Steering |
| 20 | 532 44 14-25 | Boot, Steering |
| 21 | 532 43 77-47 | Adapter, Wheel Steering |
| 22 | 585 02 99-01 | Bearing |
| 26 | 532 43 97-43 | Insert, Wheel Steering |
| 27 | 819 21 16-16 | Washer 21/32 x 1 x 16 Ga. |
| 28 | 817 00 06-12 | Screw 3/8-16 x 3/4 |
| 33 | 810 04 05-00 | Washer 5/16 |
| 35 | 532 44 07-70 | Gear, Sector Plate |
| 45 | 819 11 38-12 | Washer 11/32 ID x 2-3/8 OD x 12 Ga. |
| 53 | 532 18 89-67 | Washer Hardened .793 x 1.637 x .060 |
| 57 | 532 40 74-65 | Bracket Upstop |
| 58 | 532 19 47-47 | Bolt Shoulder Sector Pivot CFM |
| 59 | 532 19 47-48 | Washer Thrust Sector Steering |
| 60 | 873 97 10-00 | Nut Flange Lock 5/8-11 |
| 61 | 532 43 68-84 | Draglink, LH |
| 62 | 532 43 68-85 | Draglink, RH |
| 63 | 817 00 05-12 | Screw 5/16-18 x 3/4 |
| 64 | 532 19 98-49 | Retainer Clip Spring Steering |
| 66 | 871 02 07-48 | Bolt Hex Fghd 7/16-14 x 3 Serr |
| 67 | 532 19 47-37 | Bushing PM Front Axle |
| 68 | 873 90 07-00 | Nut Lock Flange 7/16-14 Gr. 5 |
| 69 | 532 19 91-62 | Washer 1.5 x .505 x .118 |
| 70 | 585 33 88-01 | Bracket Deck Susp. Front |
| 71 | 532 19 07-52 | Shaft Extension |
| 72 | 532 42 89-82 | Bolt 5/16-18 x 4 |
| 75 | 580 68 37-01 | Pinion |
| 76 | 580 68 36-01 | Screw |
| 80 | 532 00 13-70 | Washer |
| 81 | 532 43 68-87 | Link Cross RH |
| 82 | 532 44 21-47 | Pivot Bolt |
| 85 | 532 44 18-73 | Pivot RH |
| 86 | 532 44 18-72 | Pivot LH |
| 122 | 532 44 49-62 | Cap Gear |

NOTE: All component dimensions given in U.S. inches
1 inch = 25.4 mm

TRACTOR -- MODEL NO. LTH2142DR (96041023603), PRODUCT NO. 960 41 02-36
 MOWER DECK **44**



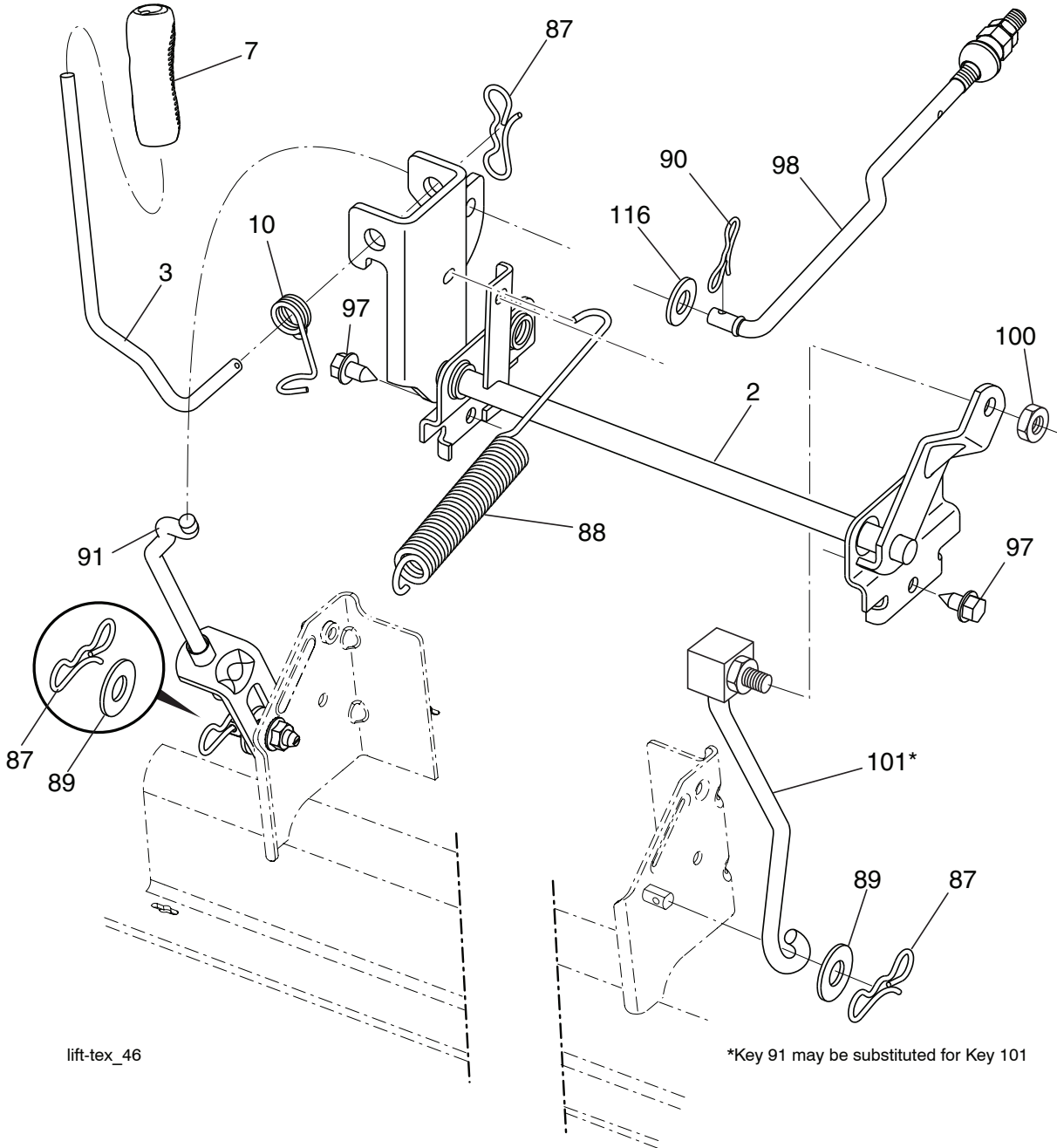
42_D_elec-Tex_25_r4

**TRACTOR - - MODEL NO. LTH2142DR (96041023603), PRODUCT NO. 960 41 02-36
MOWER DECK 44**

| KEY NO. | PART NO. | DESCRIPTION |
|------------|--------------|--|
| 1 | 532 43 98-17 | Mower Deck Assembly, 42" |
| 6 | 532 19 51-86 | Arm Susp. Rear |
| 11 | 532 13 89-71 | Blade Mower 42" Hi-Lift (for bagging and discharging) |
| 12 | 584 30 93-01 | Screw 7/16-20 x 1 Hex |
| 13 | 587 25 65-01 | Shaft Assembly, Mandrel |
| 14 | 532 18 72-81 | Housing, Mandrel |
| 15 | 585 32 39-01 | Bearing, Mandrel |
| 19 | 532 19 65-39 | Bolt, Shoulder |
| 20 | 532 15 97-70 | Baffle, Vortex |
| 21 | 873 68 05-00 | Nut |
| 23 | 532 19 25-57 | Bracket, Deflector Mower 42" |
| 24 | 532 10 53-04 | Cap, Sleeve 80 x 112 Blk Mower |
| 25 | 532 19 70-26 | Spring, Torsion, Deflector |
| 26 | 532 11 04-52 | Nut, Push Phos & Oil |
| 27 | 532 40 30-04 | Shield, Deflector 42" Blk |
| 29 | 532 13 14-91 | Rod, Hinge 42" 6 75 W/G |
| 32 | 532 15 35-35 | Pulley, Mandrel |
| 33 | 532 40 02-34 | Nut, Toplock |
| 34 | 872 11 06-12 | Bolt Carr SH 3/8-16 x 1-1/2 Gr. 5 |
| 36 | 532 19 73-79 | Pulley Idler Flat |
| 40 | 873 90 06-00 | Nut Lock 3/8-16 |
| 41 | 584 95 39-01 | Bolt Hex Wsh |
| 55 | 532 43 71-10 | Arm, Idler |
| 56 | 532 19 90-92 | Spacer, Retainer |
| 57 | 817 00 06-16 | Screw 3/8-16 x 1 |
| 59 | 532 14 10-43 | Guard TUV Idler |
| 62 | 872 11 06-16 | Bolt Rdhd Sqnk 3/8-16 unc x 2 |
| 68 | 532 14 49-59 | V-Belt, 42" Mower |
| 69 | 872 14 05-05 | Bolt, Carriage 5/16-18 x 5/8 |
| 116 | 532 12 48-42 | Bolt, Shoulder |
| 117 | 532 18 86-06 | Wheel, Gauge |
| 119 | 819 12 14-14 | Washer 3/8 x 7/8 x 14 |
| 145 | 532 19 31-97 | Pulley, Idler, Flat |
| 188 | 532 19 51-61 | Stud Fastner W/D Anti-Rotation |
| 189 | 873 90 05-00 | Nut Lock Hex Flange 5/16-18 |
| 190 | 532 19 72-51 | Spring Mower Drive |
| 241 | 532 15 29-27 | Screw TT #10-32.5 3/8 Flange |
| 242 | 532 41 55-98 | Port Washout |
| -- | 587 25 33-01 | Mandrel Assembly (Includes Housing (Key#14), Shaft assembly (Key#13) and Bearing Only (Key#15) - Pulley/Nut/Washer and Blade Bolt/Washers Not Included) |
| -- | 532 43 93-54 | Replacement Mower, Complete (Std. deck Order separately gauge wheel components Key Nos. 116-119) |

NOTE: All component dimensions given in U.S. inches
1 inch = 25.4 mm

TRACTOR -- MODEL NO. LTH2142DR (96041023603), PRODUCT NO. 960 41 02-36
MOWER LIFT 45

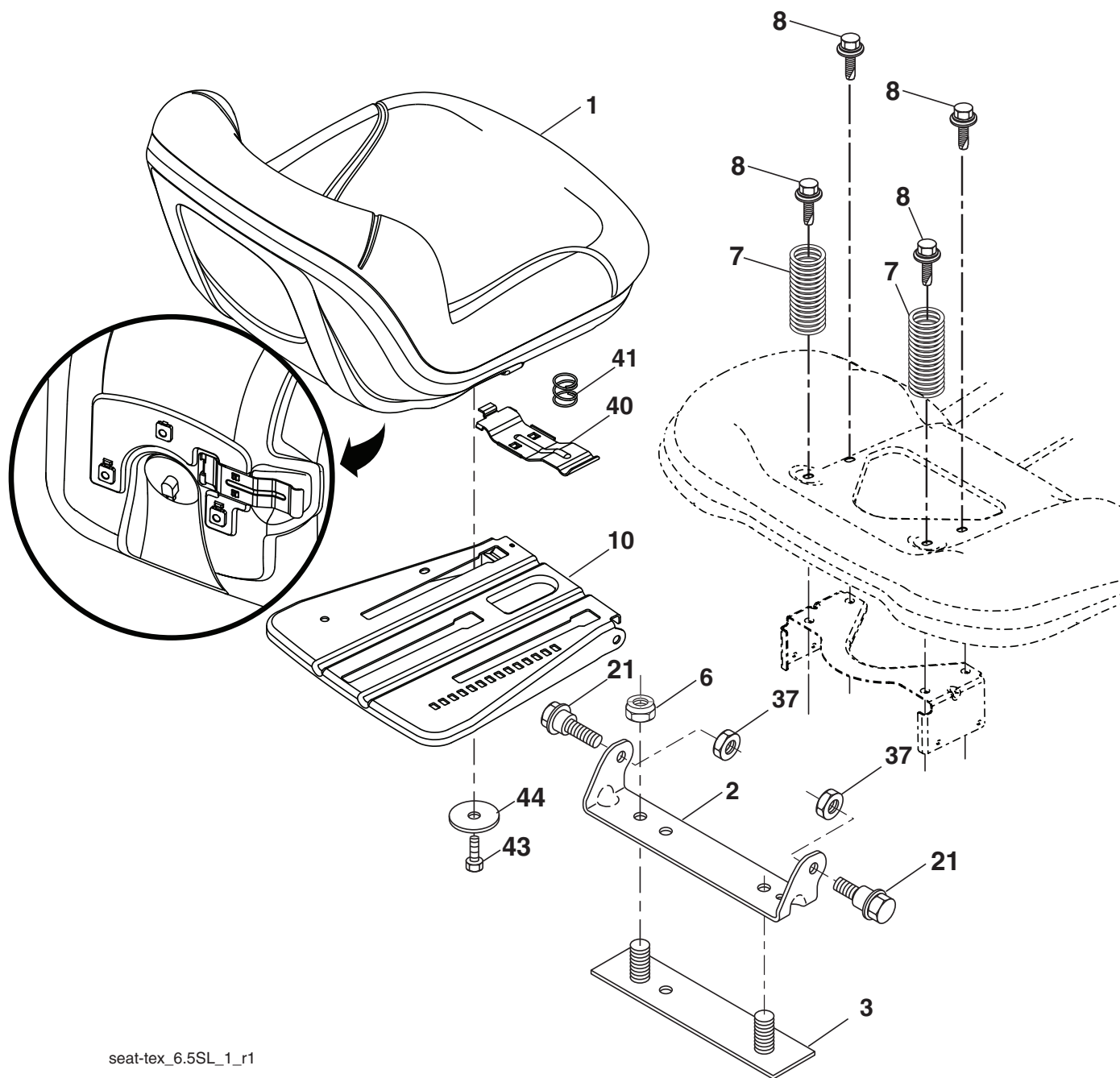


| KEY NO. | PART NO. | DESCRIPTION |
|---------|--------------|------------------------------|
| 2 | 532 42 20-27 | Shaft Asm., Lift |
| 3 | 532 19 52-31 | Lever Asm., Lift RH |
| 7 | 580 96 23-01 | Grip, Lever |
| 10 | 532 19 63-14 | Spring Torsion |
| 87 | 532 19 42-09 | Pin Cotter 7/16 Bow Tie Lock |
| 88 | 532 41 07-10 | Spring Lift Assist |
| 89 | 819 19 19-12 | Washer Clear Zinc |
| 90 | 532 19 42-08 | Pin Cotter 5/16 Bow Tie Lock |

| KEY NO. | PART NO. | DESCRIPTION |
|---------|--------------|---------------------------------|
| 91 | 532 19 51-81 | Link Lift Susp Mower Rear |
| 97 | 817 00 06-12 | Screw Hex WSH THDR 3/8-16 x 3/4 |
| 98 | 532 19 52-70 | Link Lift Susp. Front Mower |
| 100 | 873 93 06-00 | Nut Centerlock 3/8-16 |
| 101 | 532 40 70-03 | Link Asm. Lift Fxd |
| 116 | 819 15 15-16 | Washer 15/32 x 15/16 x 16 Ga. |

NOTE: All component dimensions given in U.S. inches
 1 inch = 25.4 mm

**TRACTOR - - MODEL NO. LTH2142DR (96041023603), PRODUCT NO. 960 41 02-36
SEAT ASSEMBLY 42**



seat-tex_6.5SL_1_r1

| KEY NO. | PART NO. | DESCRIPTION |
|---------|--------------|-------------------------------|
| 1 | 532 43 98-22 | Seat |
| 2 | 532 18 01-66 | Bracket Pivot Fender |
| 3 | 532 14 06-75 | Strap, Asm Fender |
| 6 | 873 80 06-00 | Nut, Lock w/Ins. 3/8-16 unc |
| 7 | 532 12 41-81 | Spring, Seat Cprsn |
| 8 | 532 17 18-77 | Bolt 5/16-18 unc x 3/4 w/Sems |
| 10 | 532 19 69-77 | Pan, Seat |
| 21 | 532 17 18-52 | Bolt, Shoulder 5/16-18 |

| KEY NO. | PART NO. | DESCRIPTION |
|---------|--------------|-------------------------------|
| 37 | 873 80 05-00 | Nut, Lock 5/16-18 unc |
| 40 | 532 19 76-61 | Handle Slide |
| 41 | 532 19 82-00 | Spring Latch Seat |
| 43 | 874 76 06-12 | Bolt Fin Hex 3/8-16 unc x 3/4 |
| 44 | 819 13 38-12 | Washer 13/32 x 2-3/8 x 12 Ga. |

NOTE: All component dimensions given in U.S. inches
1 inch = 25.4 mm

