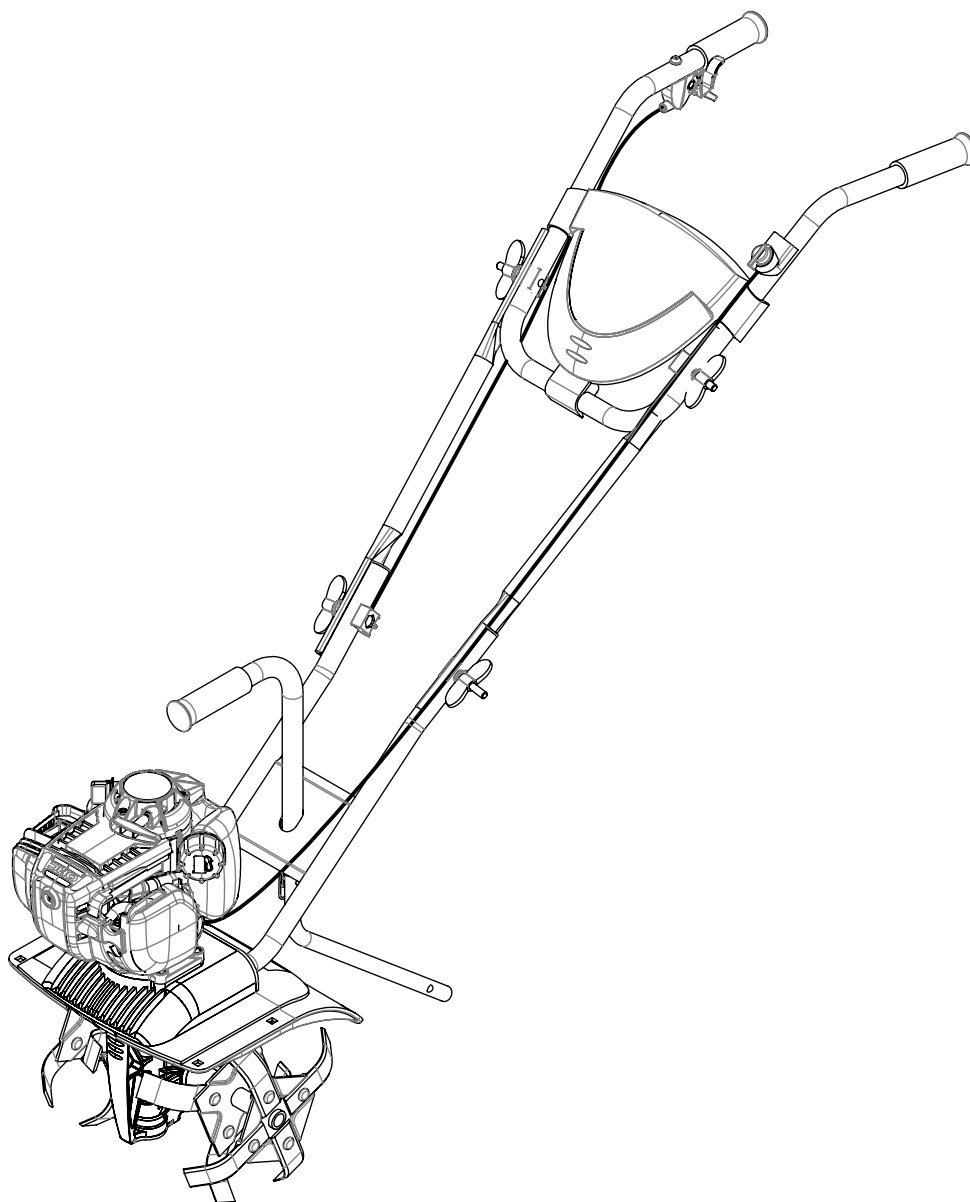


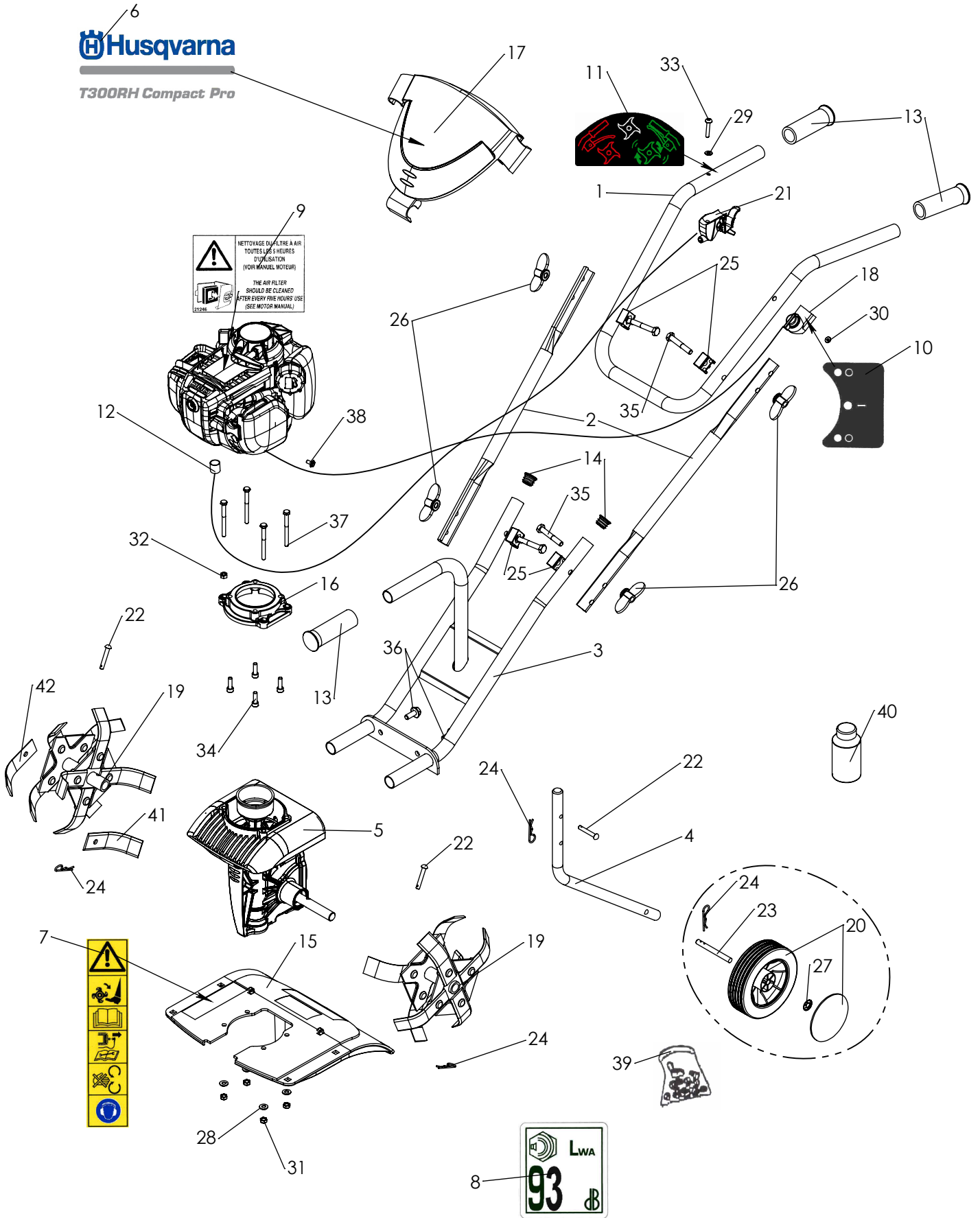
T300 RH COMPACT PRO

Spare parts
Pièces détachées



REPAIR PARTS

TILLER - MODEL NO. T300 RH COMPACT PRO



REPAIR PARTS

TILLER - MODEL NO. T300 RH COMPACT PRO

KEY N°	PART N°	DESCRIPTION	DESIGNATION	QTY QTE
1	531 00 85-28	Grey (627) top handlebar	GUIDON HAUTxMICROBxGRIS 627x	1
2	531 00 85-25	Grey (627) intermediate handelbar	GUIDON INTERM xMICROBxGris627x	2
3	531 00 85-27	Grey (627) bottom handelbar	GUIDON BAS xMIC02xGRIS 627x	1
4	531 00 85-26	Black spur	BEQUILLE xMIC02xNOIR	1
5	501 98 57-01	Transmission (GX25)	TRANSM MIC GX25 xMONTEx	1
6	588 99 17-01	Label "T300RH Compact Pro"	ETIQ "HUSQVARNA T300RH Compact Pro"	1
7	587 99 55-01	STICKER SECURITY	ETIQ. "SECURITE 6 LOGOS" CE	1
8	501 96 25-01	STICKER NOISE LEVEL '93Db'	"ETIQ. ""NIVEAU DE BRUIT"" 93	1
9	531 00 94-20	Label "Air filter cleaning"	ETIQ. "NETT FILT AIR"xCEEEx	1
10	501 96 37-01	STICKER SWITCH ON-OFF GX	ETIQ. MARCHE-ARRET SWITCH DIM 20 X 15	1
11	519 65 30-85	STICKER xCLUTCH LEVERx	ETIQ. "EMBRAY" INV MEC xCEE DIM 30 X 15	1
12	501 98 58-01	Polyamid spacer	TUBE POLYAM INCO	1
13	531 00 84-54	HAND SIDE GRIP Ø22	POIGNEE PVC SOUPLE D22	3
14	531 00 85-37	Black plug Ø22	EMBOUT ROND DIAM.22 N	2
15	505 54 42-01	Orange RAL 2009 guard	PROTECTEUR MIC03 ORANGE RAL2009	1
16	501 98 56-01	Adapter axel/motor Micro GX25	ADAPT PONT xMIC02xGX25	1
17	531 00 85-45	Orange RAL 2009 control panel	TABLEAU BORD MIC02 ORANGE RAL2009	1
18	531 00 85-58	Switch engine cut-off	SWITCH STOP GX	1
19	580 53 57-01	TWIN TINES D225 STRAIGHT BLADE (30X3)	FRAISES MIC09	2
20	531 00 85-69	BLACK WHEEL D130 BORE 8	ROUE 130 ALES 8 NOIR	1
21	531 00 85-33	Throttle câble + lever GX31	CABLE GAZ+GACHET MIC02 GX31 GX25	1
22	501 98 55-01	Pin 6x38 Z	AXE GOUPILLE 6x38 Z XC 38	3
23	531 00 85-62	AXEL OF TRANSPORT WHEEL	AXE ROUE DE TRANSP xMECAB02x FAB 18501145	1
24	519 65 12-20	CLIP PIN BETA 2 Z	GOUPILLE BETA 2 Z x 50	4
25	544 20 57-01	Cable handlebar fixing block	SUPPORT CABLE GUIDON NOIR	4
26	501 98 51-01	Handlebar tighening handle	ECROU PAPILLON GUIDON NOIR	4
27	519 00 28-60	STARLOCK WASHER DIA 8	RONDELLE STARLOCK DIA 8	1
28	519 65 34-49	PLATE WASHER M 6X14X1,2 Z NFEN 25513	RONDELLE PLATE M 6X14X1,2 Z	4
29	501 98 53-01	Washer M 5x12x1 Z	RONDELLE PLATE M 5X12X1 Z NFEN 25513	1
30	531 00 85-39	Washer M 3.2x10x1 Z	RONDELLE PLATE 3.2x10x1 Z	1
31	732 26 16-01	BLOCKING NUT M 6 Z	ECROU FREIN M 6 Z DIN 985-8	4
32	501 98 59-01	Nut HM6 z	ECROU H.U. M 6 Z	1
33	501 98 52-01	Pozidrive screw M 5x30 Z	VIS TCL POZI 5 x 30 Z	1
34	531 00 84-09	SCREW CHC M6x20z	VIS CHC 6 X 20 Z	4
35	544 20 75-01	Screw HM 8x50 Z	VIS HM8x50 CL8.8 DIN931	4
36	519 65 34-33	SCREW H M8X20 Z NOTCHED SHOULDER CL 8.8	VIS H 8x20 Z EMB CR	2
37	531 00 85-42	Screw HM 6x65 Z	VIS H 6X 65 Z CL 6.8	4
38	519 65 30-48	Tensil screw TH 5x10 bic	VIS-TH-EMB CR-8.8-CLÉ8-M5X10	1
39	531 00 85-70	Bag of screws (microbineuse)	POCH. VISS xMICRO2x	1
40	505 54 43-01	Engine oil 0.1L	HUILE SAE 10 W 30 +BIDON 10 CL bouch Blanc	1
41	580 53 59-01	Inside blade 30x3	COUTEAU 30X3 INT. MIC04	1
42	580 53 58-01	Outside blade 30x3	COUTEAU 30X3 EXT. MIC04	1