

ILLUSTRATED PARTS LIST

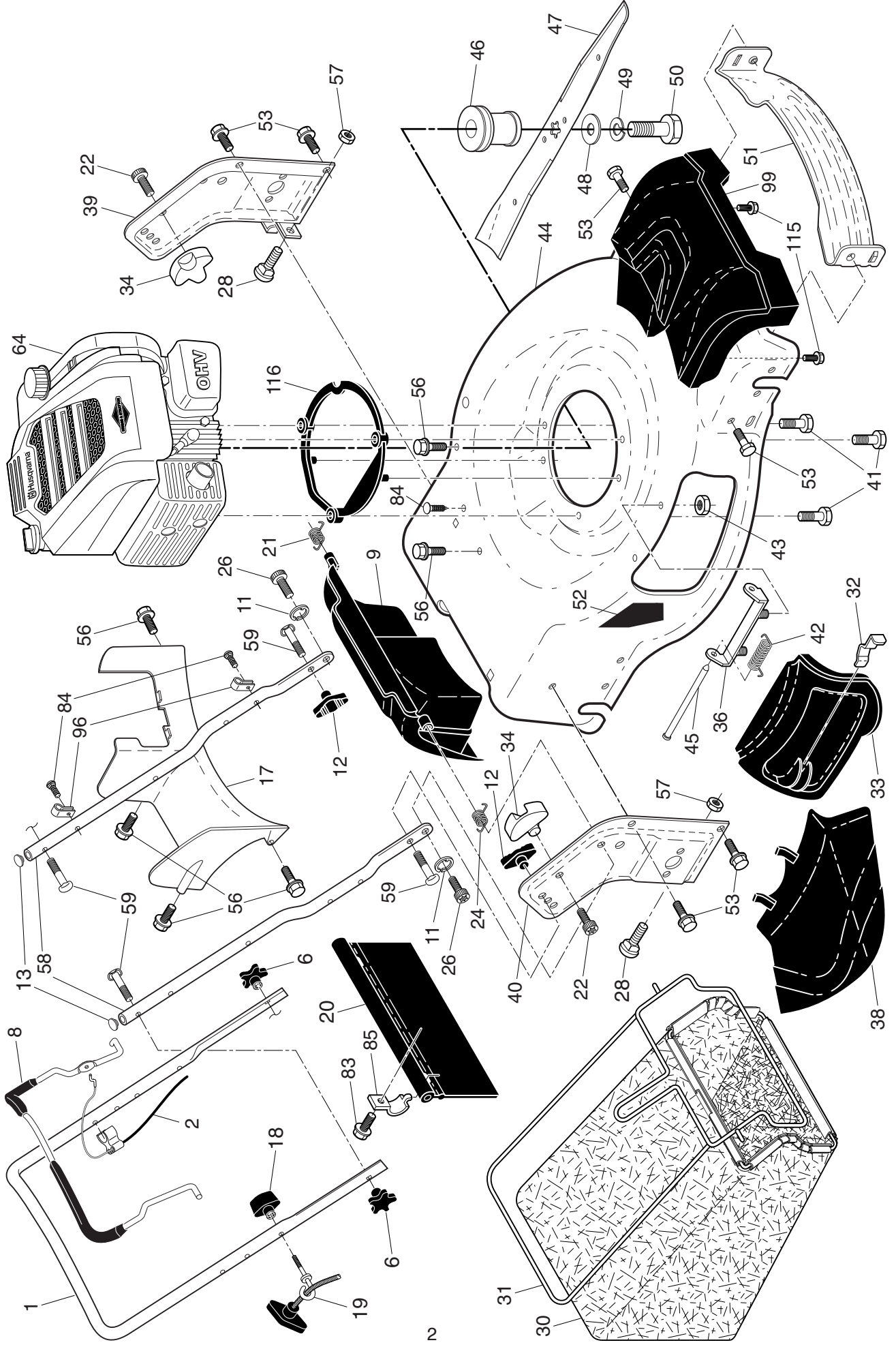
BRAND: HUSQVARNA

ROTARY LAWN MOWER

MODEL NUMBER: HU725AWDH

MFG. ID. NUMBER: 96145001902

HUSQVARNA ROTARY AWN MOWER -- MODEL NUMBER HU725AWDH (MFG. ID. NUMBER 96145001902)

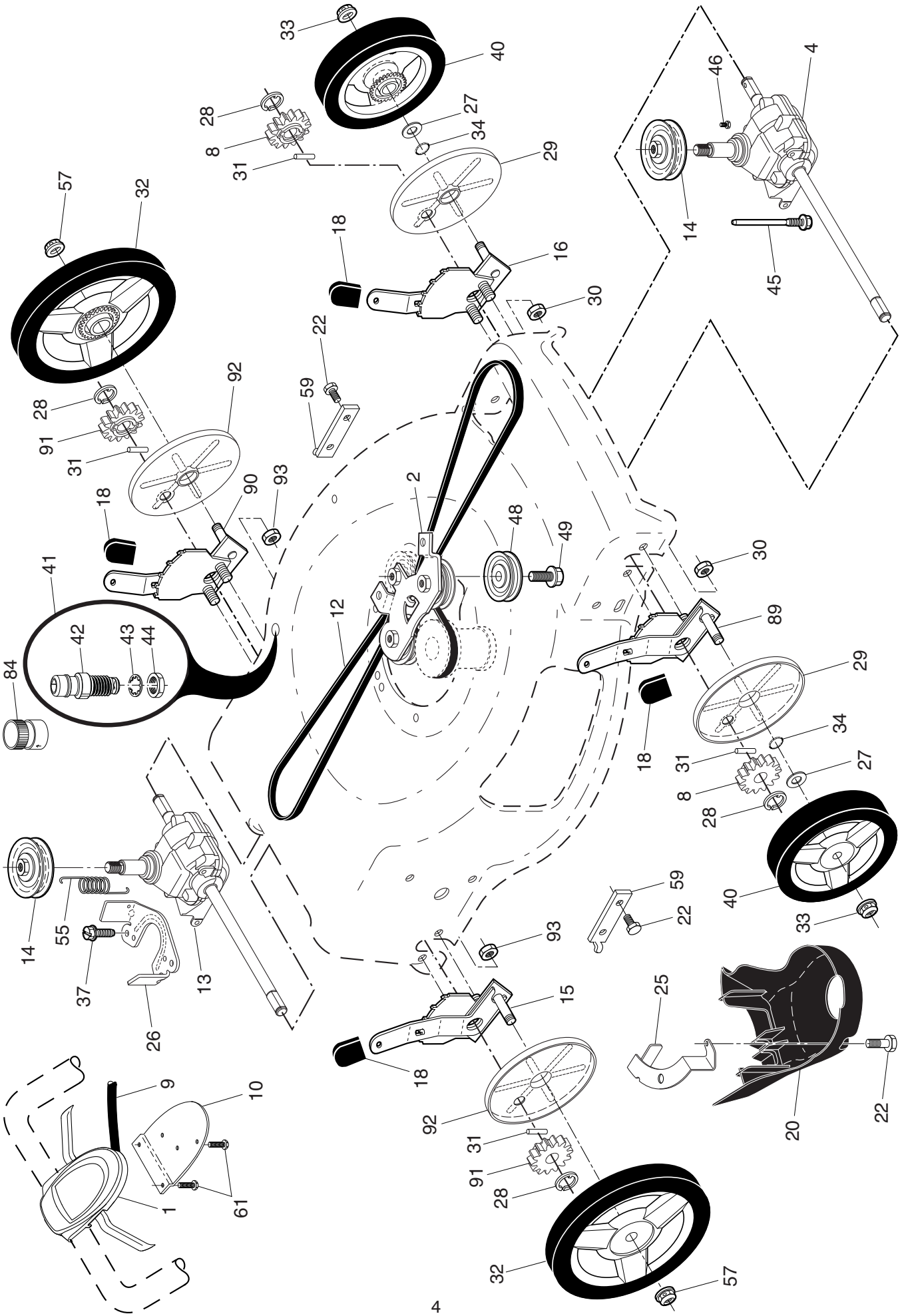


HUSQVARNA ROTARY AWN MOWER -- MODEL NUMBER HU725AWDH (MFG. ID. NUMBER 96145001902)

KEY NO.	PART NO.	DESCRIPTION	KEY NO.	PART NO.	DESCRIPTION
1	585 85 48-06	Upper Handle Assembly	44	581 70 83-54	Kit, Lawn Mower Housing
2	532 42 49-83	Cable, Engine Zone Control	45	532 17 56-50	Rod, Hinge
6	532 18 23-98	Handle Knob, Star	46	581 65 09-01	Blade Adapter
8	587 68 93-02	Control Bar, Overmolded	47	587 19 96-01	Blade, 22"
9	532 43 13-90	Rear Door Assembly	48	532 85 10-74	Washer, Hardened
11	579 48 28-01	E-Ring, Door/Handle Pivot	49	532 85 02-63	Washer, Helical
12	532 19 19-38	Handle Knob, Standard	50	532 17 96-17	Bolt, Hex Head, Grade 8 3/8-24 x 1-3/8
13	532 43 75-16	Plug, Lower Handle Bar			Front Baffle
17	581 78 21-01	Rear Baffle	51	532 43 05-99	Screw
18	581 91 26-01	T-Knob	53	817 00 05-10	Screw, Hex Washer Head #13 x 3/4
19	581 90 21-01	Rope Guide	56	817 41 13-12	Nut, Hex
20	532 44 45-37	Rear Skirt	57	532 15 53-77	Lower Handle
21	532 41 99-49	Spring, Rear Door, LH, Black	58	585 90 82-03	Handle Bolt
22	532 14 18-41	Screw, Panhead, Torx #20	59	532 19 15-74	Decal, Warning, Cut Finger
24	532 41 99-48	Spring, Rear Door, RH, Grey	52	532 40 47-63	Engine, Briggs & Stratton, Model Number 104M02-0002-F1 (For engine service and replacement parts, call Briggs & Stratton at 1-800-233-3723)
26	532 41 99-45	Screw, Rear Door/Handle Pivot	64	---	
28	586 21 25-01	Bolt, Carriage 5/16-18 x 5/8			
30	580 94 34-08	Grassbag			
31	585 05 47-02	Frame, Grass Catcher	83	532 75 00-97	Screw, Hex Washer Head
32	532 44 11-92	Latch, Mulcher Door	84	532 42 81-24	Fastener, Push
33	532 41 99-27	Mulcher Door	85	532 43 45-30	Mounting Bracket, Rear Skirt
34	532 43 81-34	Bracket, Grassbag	96	532 19 79-91	Clip, Cable
36	532 17 57-35	Bracket, Hinge	99	585 66 87-01	Front Shroud Assembly
38	532 42 61-29	Discharge Deflector	115	581 33 00-01	Screw
39	585 90 07-03	Handle Bracket, LH	116	581 74 56-01	Spacer, Engine
40	585 90 08-03	Handle Bracket, RH	--	532 42 38-49	Bag of Parts (Includes Key Numbers 12 and 59)
41	532 85 09-99	Screw, Dogpoint 3/8-16 x 1-1/8	--	115 72 74-32	Operator's Manual, English / French
42	532 19 30-00	Spring, Hinge	--	115 72 74-46	Operator's Manual, Spanish
43	532 43 81-30	Nut, Hex			

NOTE: All component dimensions given in U.S. inches. 1 inch = 25.4 mm. **IMPORTANT:** Use only Original Equipment Manufacturer (O.E.M.) replacement parts. Failure to do so could be hazardous, damage your lawn mower and void your warranty.

HUSQVARNA ROTARY AWN MOWER -- MODEL NUMBER HU725AWDH (MFG. ID. NUMBER 96145001902)



HUSQVARNA ROTARY AWN MOWER - - MODEL NUMBER HU725AWDH (MFG. ID. NUMBER 96145001902)

KEY NO.	PART NO.	DESCRIPTION	KEY NO.	PART NO.	DESCRIPTION
1	501 40 75-05	Drive Control Assembly (Includes Cable)	32	585 26 56-04	Wheel & Tire Assembly, Rear, 11"
2	586 07 28-02	Mounting Bracket, Idler Pulleys	33	532 40 91-48	Nut, Flangelock 3/8-16
4	588 48 00-01	Gearcase Assembly, Front, Complete	34	532 19 74-80	O-Ring
8	532 40 48-35	Pinion, Front	37	532 16 34-09	Screw, Hi-Lo Thread, #12 x 5/8
9	581 95 21-01	Cable, Drive	40	580 36 53-01	Wheel & Tire Assembly, Front, 8"
10	587 24 93-02	Mounting Bracket, Drive Control	41	532 43 84-89	Kit, Water Washout Assembly
12	580 36 46-03	Belt, Drive	42	532 43 49-94	Fitting, Water Washout
13	581 68 08-01	Gearcase Assembly, Rear, Complete	43	532 41 55-85	Washer, Lock, Internal Tooth
14	586 96 30-01	Pulley, Drive	44	532 41 55-86	Locknut, Hex, with O-Ring
15	587 48 65-02	Wheel Adjuster Assembly, RH Rear	45	587 43 82-01	Belt Keeper, Gearcase, Front
16	581 49 79-07	Wheel Adjuster Assembly, LH Front	46	584 29 94-01	Screw
18	532 70 10-37	Knob, Wheel Adjuster	48	587 97 30-01	Pulley Assembly, Idler
20	580 80 69-01	Debris Shield	49	581 33 45-01	Screw, Mounting, Idler Pulley
22	817 00 05-10	Screw, Hex Head 1/4-20	55	581 35 13-01	Spring, Tension
25	532 42 60-65	Mounting Bracket, Debris Shield	57	532 40 91-49	Nut, Flangelock 3/8-16
26	581 15 25-02	Belt Keeper, Gearcase, Rear	59	532 44 21-13	Support Bracket
27	532 06 77-25	Washer, Flat	61	532 18 16-98	Screw
28	812 00 00-58	E-Ring 7/16	84	532 41 64-05	Adapter, Quick-Connect Coupling
29	581 84 04-01	Cover, Dust, Wheel, Front	89	581 49 79-08	Wheel Adjuster Assembly, RH Front
30	532 43 81-30	Nut, Hex	90	587 48 65-01	Wheel Adjuster Assembly, LH Rear
31	532 40 48-45	Pawl, Drive	91	587 23 24-01	Pinion, Rear
			92	587 25 17-01	Cover, Dust, Wheel, Rear
			93	532 19 17-30	Nut, Hex

NOTE: All component dimensions given in U.S. inches. 1 inch = 25.4 mm. **IMPORTANT:** Use only Original Equipment Manufacturer (O.E.M.) replacement parts. Failure to do so could be hazardous, damage your lawn mower and void your warranty.