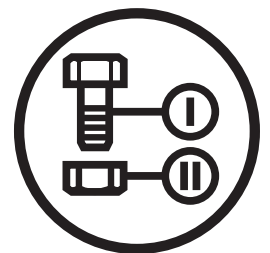




## Parts Manual

# MZ 54S

Zero Turn Mower / 967334101-00



Please read the operator manual carefully and make sure you understand the instructions before using the machine.

When you need spare parts or support in service questions, warranty issues, etc., please consult the following professional:

This manual belongs to the machine with the manufacturing number:	Engine	Transmission

### Manufacturing Number

The machine's manufacturing number can be found on the printed plate affixed to the engine compartment.

Stated on the plate, from the top are:

- The machine's type designation (I.D.).
- The manufacturer's type number (Model).
- The machine's serial number (Serial no.)

*Please have the type designation and serial number available when ordering spare parts.*

The engine's manufacturing number is stamped on one of the valve covers.

The plate states:

- The engine's model.
- The engine's type.
- Code

*Please have these available when ordering spare parts.*

The wheel motors and hydrostatic pumps have a barcode decal affixed at the rear.

<b>Accessories Available</b>	
Collection System -----	966 72 12-01
Mulch Kit -----	531 30 96-43

# CONTENTS

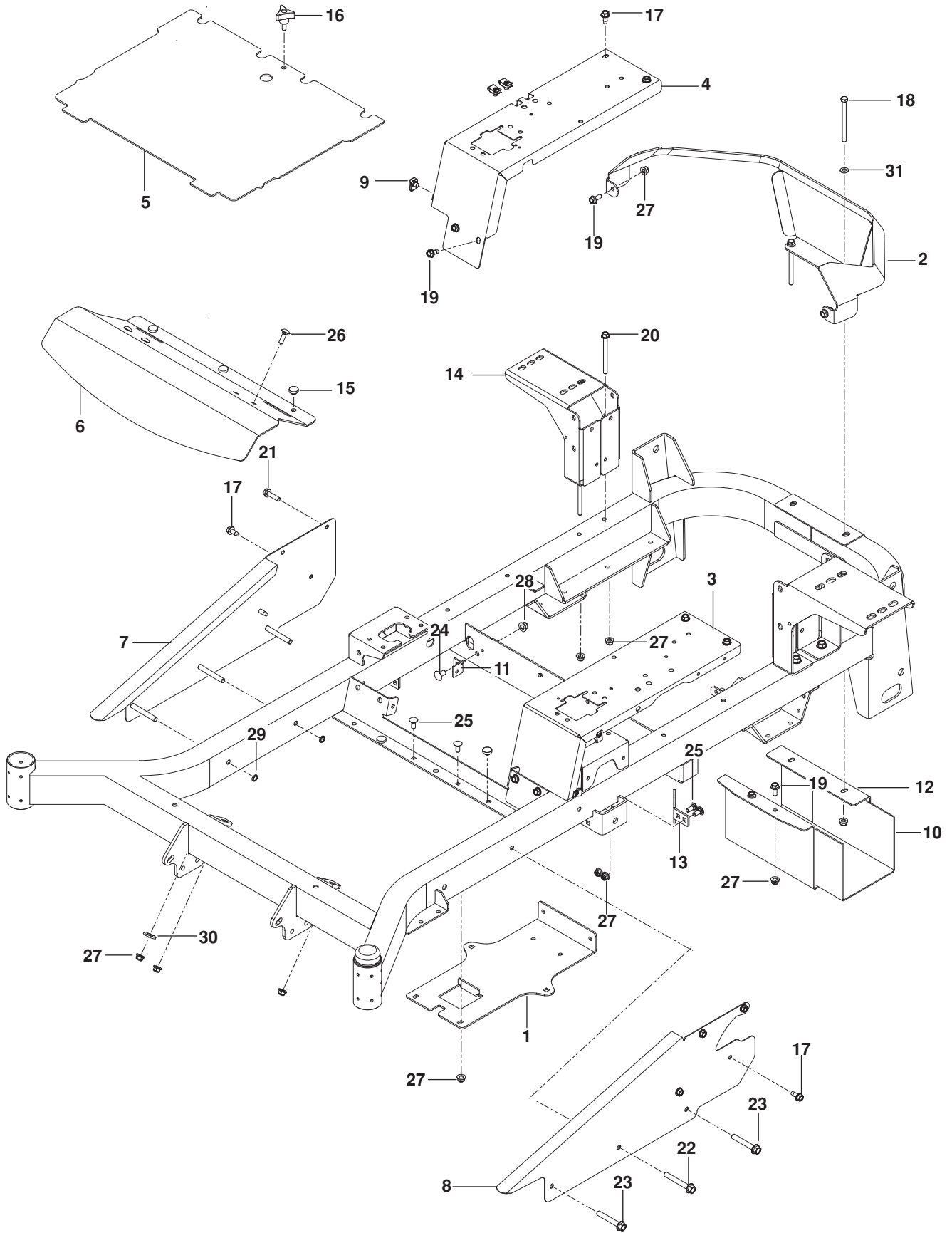
---

FRAME.....	4
ENGINE PLATE.....	6
STEERING .....	8
IGNITION.....	10
PARK BRAKE.....	12
HYDRAULIC PUMP-MOTOR.....	14
WHEELS .....	16
MOWER LIFT / DECK LIFT .....	18
MOWER DECK / CUTTING DECK.....	20
SEAT .....	22
DECALS.....	24
Bagger.....	26
Mount and Chutes .....	28

Illustrations may or may not represent the actual assemblies and it is not recommended to use this manual as a guide to assemble or disassemble the mower.

NOTE: All fasteners are Grade 5 unless otherwise specified.

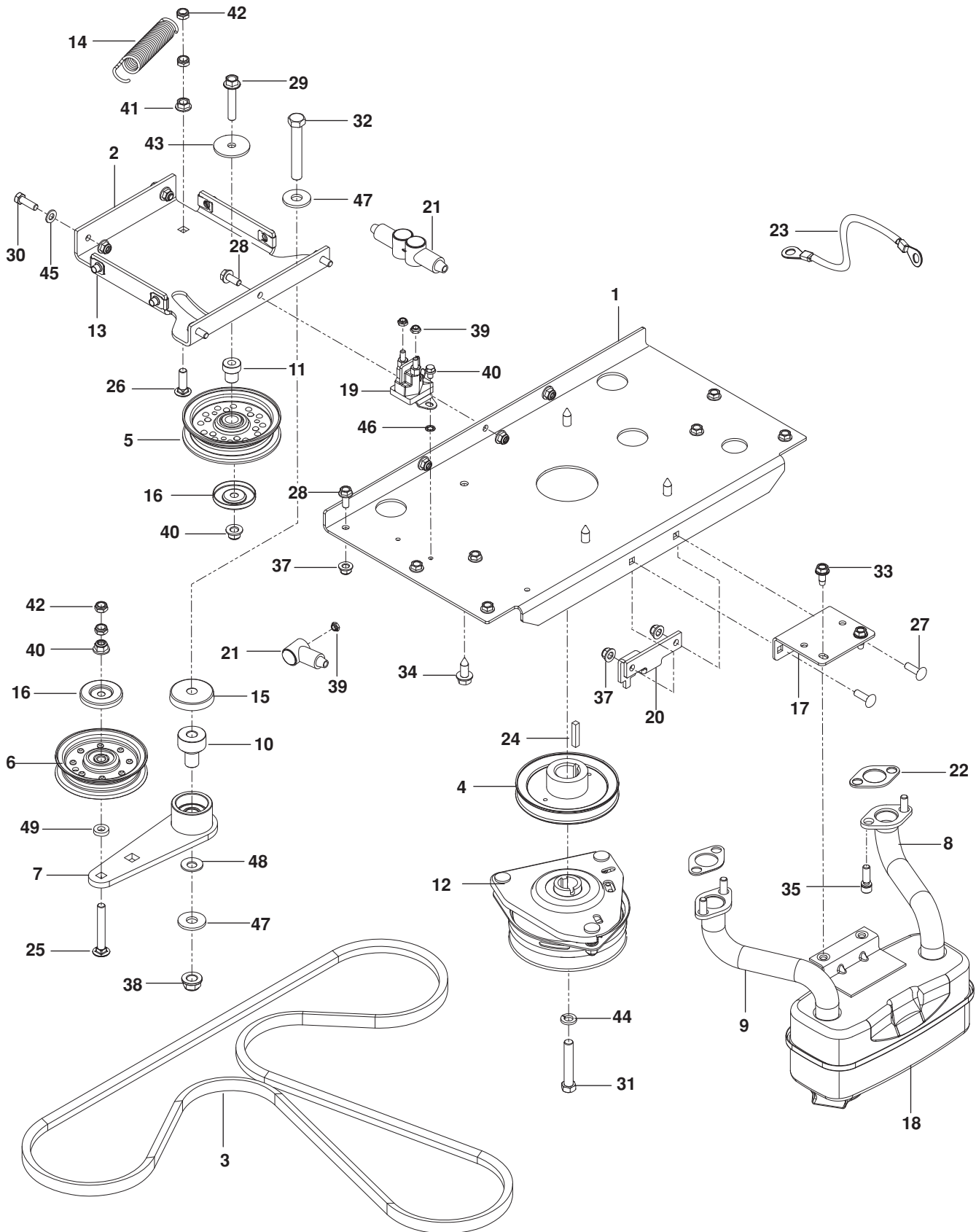
# FRAME



# FRAME

ITEM	PART NO.	QTY.	DESCRIPTION	ITEM	PART NO.	QTY.	DESCRIPTION
1..	575 01 72-02.....	1	PLATE, BATTERY, BLK	17..	539 10 74-75.....	12	BOLT $\frac{5}{16}$ -18 x $\frac{3}{4}$ THD FRM
2..	575 34 84-02.....	1	GUARD, REAR GRY	18..	539 10 23-35.....	2	BOLT $\frac{5}{16}$ -18 x 4 HEX HD
3..	577 25 68-02.....	1	PANEL, LT ORG	19..	525 46 47-01.....	5	BOLT $\frac{5}{16}$ -18 x $\frac{3}{4}$ HEX FLG HD
4..	577 25 69-02.....	1	PANEL, RT ORG	20..	874 49 05 60.....	4	BOLT $\frac{5}{16}$ -18 x $3\frac{3}{4}$ HEX FLG HD
5..	539 13 27-44.....	1	PLATE w/ SAFTY DECAL	21..	525 54 40-01.....	1	BOLT $\frac{5}{16}$ -18 x $1\frac{1}{4}$ HEX FLG HD
6..	539 13 23-80.....	1	PLATE, FOOTREST ORG	22..	539 13 17-81.....	2	BOLT $\frac{3}{8}$ -16 x $2\frac{3}{4}$ HEX FLG HD
7..	539 13 15-79.....	1	SIDE, RT ORG	23..	539 13 30-06.....	4	BOLT $\frac{3}{8}$ -16 x $2\frac{1}{2}$ HEX FLG HD
8..	539 13 15-77.....	1	SIDE, LT ORG	24..	539 10 91-17.....	2	BOLT $\frac{3}{8}$ -16 x $\frac{3}{4}$ RD HD SQNK
9..	539 10 47-63.....	8	RETAINER, U TYPE $\frac{5}{16}$ -18	25..	539 99 03-16.....	6	BOLT $\frac{5}{16}$ -18 x $\frac{3}{4}$ RD HD SQNK
10..	539 13 28-59.....	1	SHIELD, HEAT	26..	539 99 02-08.....	3	BOLT $\frac{5}{16}$ -18 x 1 RD HD SQNK
11..	575 24 52-02.....	2	BRACKET, DAMPENER	27..	539 11 28-99.....	12	NUT $\frac{5}{16}$ -18 HEX FLANGE NYL
12..	575 23 04-02.....	1	SHIELD, MUFFLER BLK	28..	521 99 65-01.....	2	NUT $\frac{3}{8}$ -16 HEX FLG NYLOC
13..	505 25 64-01.....	2	STOP, DECK	29..	539 20 02-82.....	6	NUT $\frac{3}{8}$ -16 HEX JAM NYLOC
14..	575 53 36-02.....	2	MOUNT, TANK BLK	30..	539 99 02-50.....	1	WASHER
15..	539 10 25-87.....	5	BUMPER	31..	819 11 11-16.....	2	WASHER $\frac{5}{16}$ SAE FLAT
16..	539 10 44-11.....	1	KNOB w/ STUD				

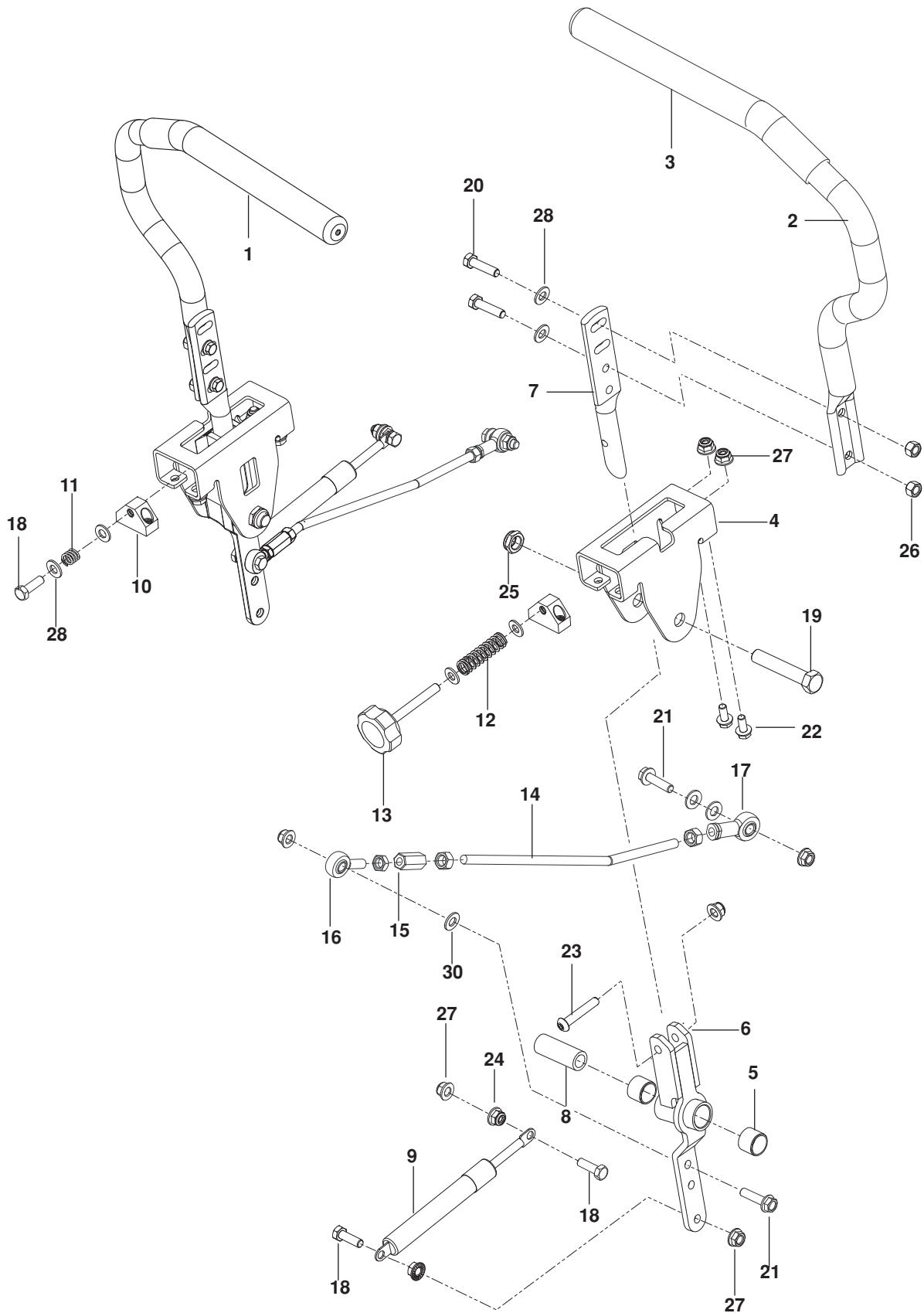
# ENGINE PLATE



# ENGINE PLATE

ITEM	PART NO.	QTY.	DESCRIPTION	ITEM	PART NO.	QTY.	DESCRIPTION
1..	574 84 63-02.....	1	PLATE, ENGINE BLK	29..	874 49 06-32.....	1	BOLT 3/8-16 x 2 HEX FLG HD
2..	574 84 64-02.....	1	PLATE, IDLER SUPPORT BLK	30..	539 99 02-09.....	2	BOLT 5/16-18 x 1 HEX HD
3..	574 87 09-01.....	1	BELT, HYDRO	31..	581 33 28-02.....	1	BOLT 7/16-20 x 2 1/2 HEX HD
4..	585 81 37-01.....	1	PULLEY	32..	539 10 34-33.....	1	BOLT 1/2-13 x 3/4 HEX HD
5..	539 97 66-88.....	1	PULLEY, IDLER	33..	817 49 05-12.....	2	SCREW 5/16-18 x 3/4 THD FRM
6..	539 10 76-20.....	1	PULLEY, IDLER SECONDARY	34..	817 12 06-16.....	4	SCREW 3/8-16 x 1 THD FRM
7..	510 04 16-03.....	1	ARM, IDLER w/ BEARINGS	35..	532 18 39-06.....	4	SCREW 5/16-18 x 3/4 SKT HD
8..	581 88 10-01.....	1	EXHAUST TUBE, RT	36..	539 99 03-02.....	2	SCREW 1/4-20 x 3/8 THD FRM
9..	581 88 11-01.....	1	EXHAUST TUBE, LT	37..	539 11 28-99.....	15	NUT 5/16-18 HEX FLG NYLOC
10..	510 20 63-01.....	1	PIVOT, BEARING	38..	521 99 11-01.....	1	NUT 1/2-13 FLG NYLOC
11..	525 43 56-01.....	1	PIVOT, IDLER	39..	539 10 81-20.....	3	NUT 1/4-20 THIN NYLOC
12..	532 17 93-35.....	1	CLUTCH	40..	521 99 65-01.....	2	NUT 3/8-16 FLG NYLOC
13..	539 10 47-63.....	4	RETAINER, U TYPE	41..	539 99 06-13.....	1	NUT 3/8-16 WHIZLK
14..	510 25 44-01.....	1	SPRING, PUMP	42..	539 20 02-82.....	4	NUT 3/8-16 JAM NYLOC
15..	539 11 46-62.....	1	SHIELD, DUST	43..	539 11 18-97.....	1	WASHER 3/8 SPECIAL
16..	510 25 45-01.....	2	SHIELD, DUST	44..	539 99 02-47.....	1	WASHER 7/16 SLW
17..	575 22 99-02.....	1	BRACKET, MUFFLER BLK	45..	819 11 11-16.....	2	WASHER 5/16 SAE
18..	539 13 16-04.....	1	MUFFLER	46..	539 99 00-53.....	1	WASHER 1/4 INT TOOTH LK
19..	532 19 25-07.....	1	SOLENOID	47..	539 10 95-54.....	2	WASHER 1/2
20..	585 81 36-01.....	1	STOP, CLUTCH	48..	539 11 55-28.....	1	WASHER 1/2 BELLEVILLE
21..	532 13 15-63.....	3	INSULATOR	49..	539 10 95-62.....	1	WASHER 3/8
22..	532 16 53-91.....	2	GASKET, MUFFLER KAW	NOT SHOWN			
23..	539 10 27-57.....	1	CABLE, POSITIVE	532 198316.....	1	ADAPTER, CLUTCH	
24..	539 91 27-57.....	1	KEY 1/4 SQ x 1 1/4	-----	1	ENGINE, BRIGGS & STRATTON 25 HP For engine service and replacement parts, see a B&S dealer	
25..	539 13 02-35.....	1	BOLT 3/8-16 x 2 3/4 RD HD SQNK				
26..	539 10 04-13.....	1	BOLT 3/8-16 x 1 1/4 RD HD SQNK				
27..	539 10 72-71.....	2	BOLT 5/16-18 x 1 RD HD SQNK				
28..	874 49 05-12.....	11	BOLT 5/16-18 x 3/4 HEX FLG HD				

# STEERING



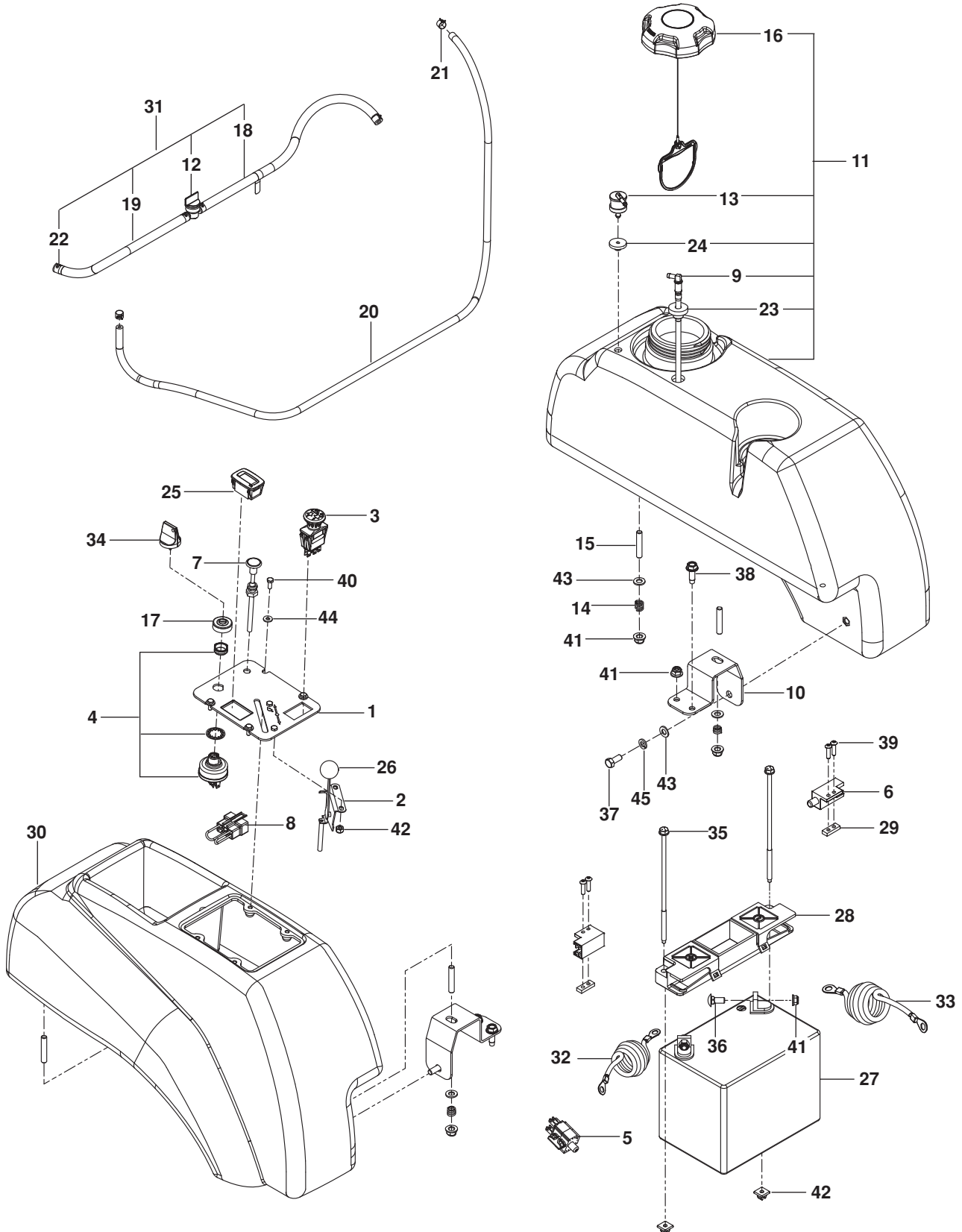


# STEERING

---

ITEM	PART NO.	QTY.	DESCRIPTION	ITEM	PART NO.	QTY.	DESCRIPTION
1..	539 13 20-09.....	1	LEVER w/ GRIP RT	15..	539 11 66-89.....	2	COUPLER, ROD END
2..	539 13 20-10.....	1	LEVER w/ GRIP LT	16..	539 11 66-90.....	2	ROD END LT
3..	539 13 08-94.....	2	GRIP, FOAM	17..	539 11 57-29.....	2	ROD END RT
4..	586 73 72-02.....	2	BRACKET, CONTROL	18..	874 78 05-20.....	5	BOLT $\frac{5}{16}$ -18 x 1 $\frac{1}{4}$ HEX HD
5..	532 43 82-82.....	4	BUSHING	19..	874 78 08 44.....	2	BOLT $\frac{1}{2}$ -13 x 2 $\frac{3}{4}$ HEX HD
6..	587 18 77 01.....	2	LEVER, CONTROL	20..	539 97 69-35.....	4	BOLT $\frac{5}{16}$ -18 x 1 $\frac{1}{2}$ HEX HD
7..	577 42 00-01.....	2	LEVER, HANDLE	21..	525 54 40-01.....	4	BOLT $\frac{5}{16}$ -18 x 1 $\frac{1}{4}$ TPBLT
8..	584 92 72-01.....	2	SPACER, PIVOT CONTROL	22..	874 49 05 12.....	8	BOLT $\frac{5}{16}$ -18 X $\frac{3}{4}$ HEX FLG HD
9..	539 10 27-20.....	2	DAMPENER	23..	576 85 04-02.....	2	SCREW $\frac{5}{16}$ -18 X 1 $\frac{3}{4}$ BTN HD
10..	581 43 75-01 .....	2	BLOCK, TRACKING	24..	539 99 05-85.....	4	NUT $\frac{5}{16}$ -18 HEX WHIZLK
11..	539 10 28-45.....	1	SPRING	25..	539 10 80-10.....	2	NUT $\frac{1}{2}$ -13 HEX JAM NYL GR2
12..	576 85 03-01.....	1	SPRING	26..	539 99 07-17.....	6	NUT $\frac{5}{16}$ -18 HEX NYLOC
13..	539 13 17-99.....	1	KNOB	27..	539 11 28-99.....	10	NUT $\frac{5}{16}$ -18 HEX FLG NYLOC
14..	574 81 14-01.....	2	ROD, MOTION CONTROL	28..	819 11 11-16.....	12	WASHER $\frac{5}{16}$ SAE FLT

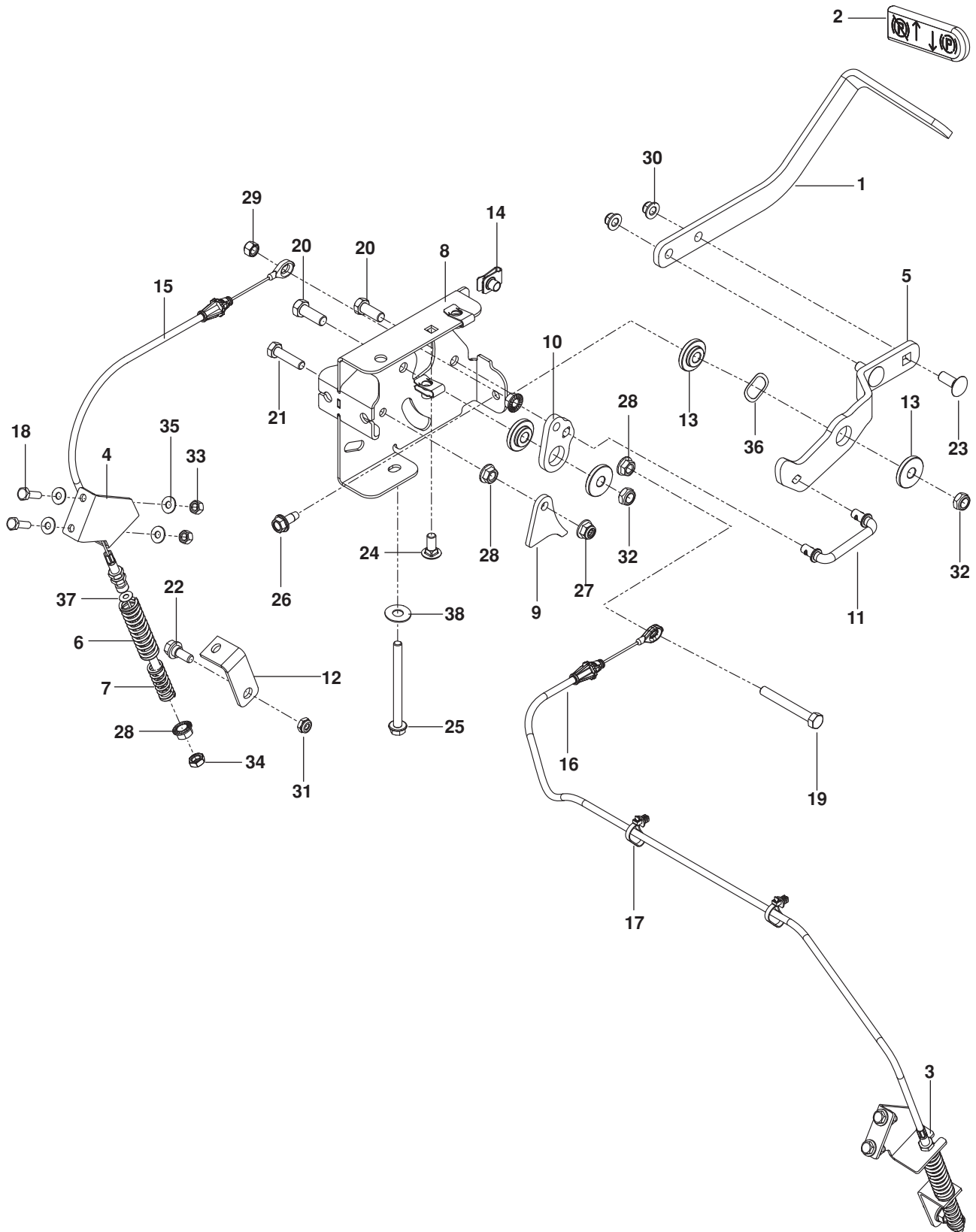
# IGNITION



# IGNITION

ITEM	PART NO.	QTY.	DESCRIPTION	ITEM	PART NO.	QTY.	DESCRIPTION
1..	574 84 12-04.....	1 .....	PLATE, CONSOLE, BLK	25..	586 16 18-01.....	1 .....	METER, SERVICE
2..	539 11 24-38.....	1 .....	CABLE, THROTTLE	26..	539 13 30-49.....	1 .....	KNOB
3..	539 13 16-27.....	1 .....	SWITCH, PTO 10 AMP	27..	539 10 24-36.....	1 .....	BATTERY
4..	574 45 54-01.....	1 .....	SWITCH, IGNITION	28..	539 10 76-28.....	1 .....	BATTERY HOLD DOWN
5..	539 11 37-92.....	1 .....	SWITCH, BRAKE	29..	539 10 26-78.....	2 .....	PLATE, TAPPED
6..	532 10 95-53.....	2 .....	SWITCH, INTERLOCK	30..	539 10 75-93.....	1 .....	CONSOLE, RT
7..	539 11 24-39.....	1 .....	CHOKE	31..	586 12 39-01.....	1 .....	ASSY, FUEL LINE
8..	575 32 10-01.....	1 .....	PLUG, TIMER	32..	539 10 49-74.....	1 .....	CABLE, POSITIVE 31"
9..	576 46 92-01.....	1 .....	FITTING, FUEL	33..	539 10 76-45.....	1 .....	CABLE, NEGATIVE 32"
10..	539 13 16-71.....	2 .....	SUPPORT, TANK, BLK	34..	574 45 55-01.....	1 .....	KEY, IGNITION
11..	585 72 23-01.....	1 .....	TANK ASSY LT GRY	35..	539 10 76-32.....	2 .....	BOLT 1/4 x 7 1/2
12..	539 91 63-25.....	1 .....	VALVE, FUEL	36..	539 99 03-16.....	2 .....	BOLT 5/16-18 x 3/4 RD HD SQNK
13..	576 61 81-01.....	1 .....	VALVE, FUEL CHECK	37..	874 78 05-12.....	2 .....	BOLT 5/16-18 x 3/4 HEX HD
14..	539 10 28-45.....	6 .....	SPRING	38..	817 49 05-16.....	3 .....	SCREW 5/16-18 x 1 THD FRM
15..	539 10 25-02.....	6 .....	STUD 5/16-18	39..	574 82 27-01.....	4 .....	SCREW #10-24 x 3/4 SKT HD
16..	575 01 81-01.....	1 .....	FUEL CAP w /TETHER	40..	539 99 04-11.....	6 .....	SCREW #10-24 x 1/2 SLT
17..	539 10 31-78.....	1 .....	CAP, IGNITION SWITCH NUT	41..	539 11 28-99.....	12 .....	NUT 5/16-18 HEX FLANGE NYL
18..	587 04 48-26.....	1 .....	HOSE, FUEL 26"	42..	539 10 76-29.....	2 .....	NUT 1/4 PUSH NYLON
19..	587 04 48-10.....	1 .....	HOSE, FUEL 10"	43..	819 11 11-16.....	8 .....	WASHER 5/16 SAE
20..	587 04 45-27.....	1 .....	HOSE 3/16 VAPOR 27"	44..	819 07 08-18.....	4 .....	WASHER #10
21..	575 43 65-01.....	2 .....	CLAMP, HOSE	45..	810 03 05-00.....	2 .....	WASHER 5/16 SLW
22..	539 91 22-22.....	4 .....	CLAMP, HOSE				NOT SHOWN
23..	539 10 52-45.....	1 .....	GROMMET, RUBBER		585 99 97-01.....	1 .....	HARNESS, MAIN
24..	576 61 82-01.....	1 .....	GROMMET, CHECK VALVE				

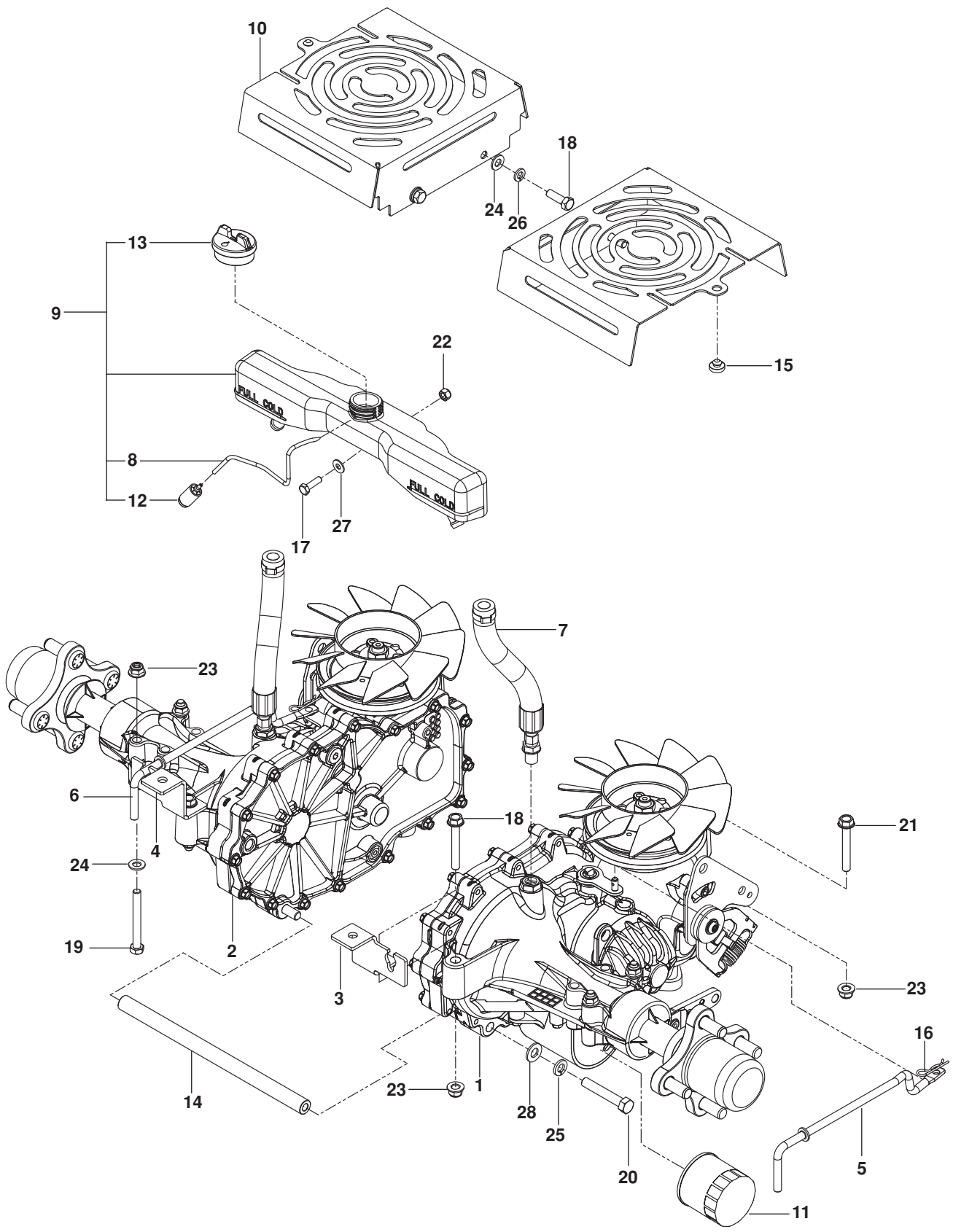
# PARK BRAKE



# PARK BRAKE

ITEM	PART NO.	QTY.	DESCRIPTION	ITEM	PART NO.	QTY.	DESCRIPTION
1..	539 13 21-51.....	1	ARM, BRAKE	21..	539 99 02-09.....	1	BOLT $\frac{5}{16}$ -18 x 1 HEX HD
2..	539 10 50-36.....	1	GRIP, BRAKE HANDLE	22..	539 11 03-03.....	2	BOLT $\frac{5}{16}$ SHOULDER
3..	575 22 96-02.....	1	BRACKET, RT BLK	23..	539 99 06-45.....	2	BOLT $\frac{3}{8}$ -16 x 1 RD HD SQNK
4..	575 22 97-02.....	1	BRACKET, LT BLK	24..	539 99 03-16.....	1	BOLT $\frac{5}{16}$ -18 x $\frac{3}{4}$ RD HD SQNK
5..	539 13 24-23.....	1	LEVER, BRAKE	25..	539 13 17-80.....	1	BOLT $\frac{5}{16}$ -18 x $3\frac{3}{4}$ HEX FLG HD
6..	575 23 02-01.....	2	SPRING, RETURN	26..	539 10 74-75.....	1	BOLT $\frac{5}{16}$ -18 x $\frac{3}{4}$ THD FRM
7..	575 23 03-01.....	2	SPRING, ENGAGEMENT	27..	539 11 28-99.....	4	NUT $\frac{5}{16}$ -18 FLANGE NYLOC
8..	539 13 21-58.....	1	MOUNT, BRAKE	28..	539 99 05-85.....	5	NUT $\frac{5}{16}$ -18 HEX WHIZLK
9..	539 13 21-54.....	1	ACTUATOR, SWITCH	29..	539 99 07-17.....	1	NUT $\frac{5}{16}$ -18 HEX NYLOC
10..	539 13 21-53.....	1	BELLCRANK, BRAKE	30..	521 99 65-01.....	2	NUT $\frac{3}{8}$ -16 HEX FLG NYLOC
11..	539 13 24-24.....	1	LINKAGE, BRAKE	31..	539 11 56-17.....	2	NUT $\frac{5}{16}$ HEX NYLOC
12..	575 22 98-02.....	2	BRACKET, BRAKE	32..	539 20 02-82.....	2	NUT $\frac{3}{8}$ -16 HEX JAM NYLOC
13..	539 13 21-61.....	4	BUSHING, BRAKE	33..	539 97 69-78.....	4	NUT $\frac{1}{4}$ -20 HEX NYLOC
14..	539 10 47-63.....	3	RETAINER, U TYPE $\frac{5}{16}$ -18	34..	539 10 78-97.....	2	NUT $\frac{5}{16}$ -18 HEX JAM
15..	539 13 21-73.....	1	CABLE, BRAKE SHORT	35..	539 99 00-55.....	8	WASHER $\frac{1}{4}$ SAE FLT
16..	539 13 21-74.....	2	CABLE, BRAKE LONG	36..	539 13 30-07.....	1	WASHER .825 WAVE
17..	505 28 00-01.....	2	TIE w/ CLIP	37..	539 99 01-22.....	2	WASHER $\frac{3}{8}$ SAE
18..	539 99 06-43.....	4	BOLT $\frac{1}{4}$ -20 x $\frac{7}{8}$ HEX HD	38..	539 10 95-54.....	1	WASHER $\frac{1}{2}$ FLAT
19..	539 10 83-96.....	1	BOLT $\frac{5}{16}$ -18 x $2\frac{1}{2}$ HEX HD				
20..	539 99 05-63.....	2	BOLT $\frac{3}{8}$ -16 x 1 HEX HD				

# HYDRAULIC PUMP-MOTOR

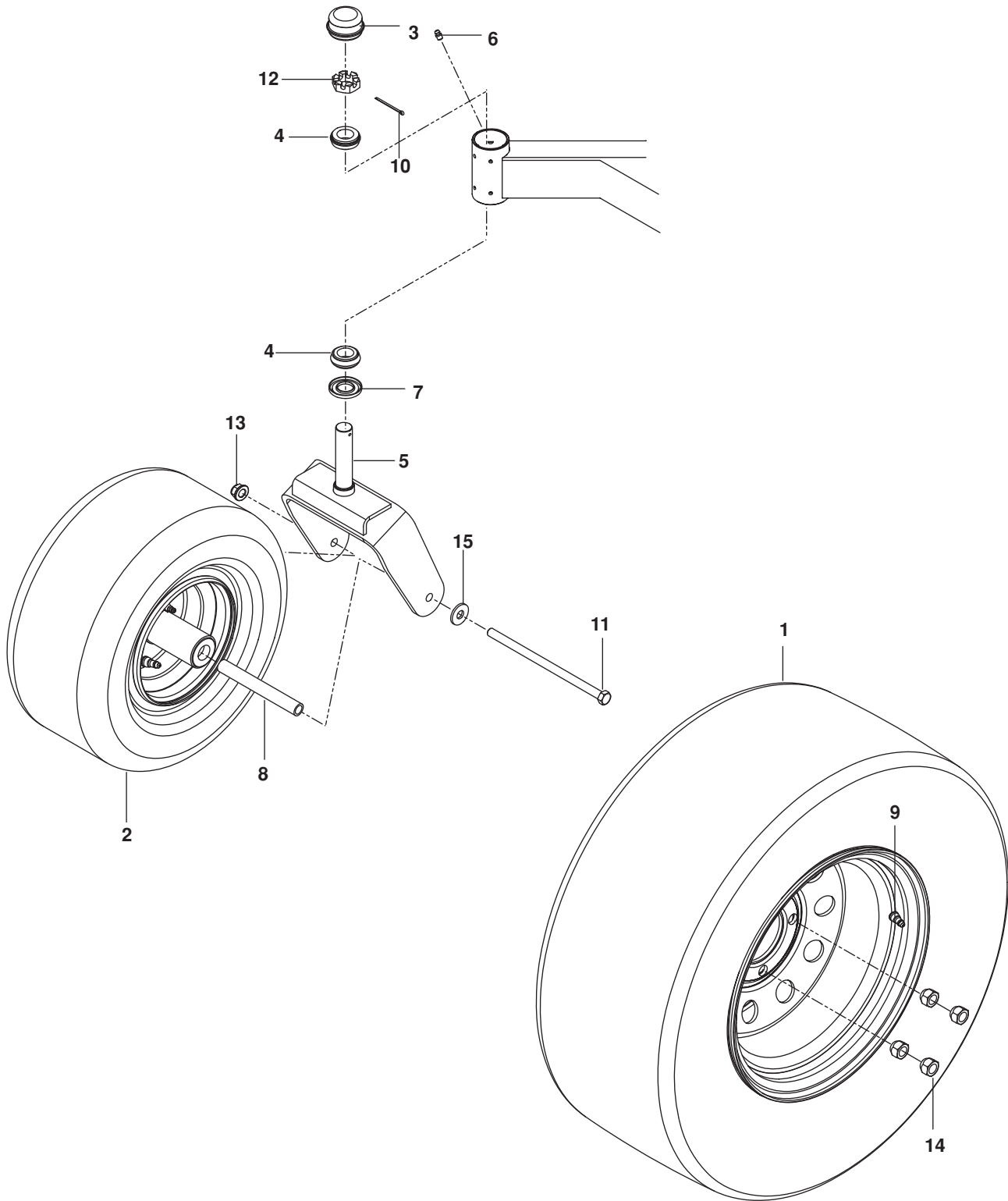


# HYDRAULIC PUMP-MOTOR

---

ITEM	PART NO.	QTY.	DESCRIPTION	ITEM	PART NO.	QTY.	DESCRIPTION
1..	577 22 77-02.....	1 .....	TRANS, ZT-3100, LT	15..	539 10 25-87.....	2 .....	GROMMET, BUMPER
2..	577 22 77-01.....	1 .....	TRANS, ZT-3100, RT	16..	539 97 69-88.....	2 .....	HAIRPIN COTTER
3..	575 01 71-02.....	1 .....	BRACKET, TRANS, LT	17..	539 99 06-43.....	1 .....	BOLT 1/4-20 x 7/8 HEX HD
4..	575 01 70-02.....	1 .....	BRACKET, TRANS, RT	18..	539 99 02-09.....	4 .....	BOLT 5/16-18 x 1 HEX HD
5..	539 13 16-16.....	1 .....	LINKAGE, BYPASS LT	19..	539 10 17-21.....	4 .....	BOLT 5/16-18 x 2 3/4 HEX HD
6..	539 13 16-18.....	1 .....	LINKAGE, BYPASS RT	20..	539 10 85-51.....	2 .....	BOLT 3/8-16 x 2 1/2 HEX HD GR8
7..	574 89 21-01.....	2 .....	HOSE, EXPANSION	21..	574 23 38-01.....	4 .....	BOLT 5/16-18 x 2 1/4 HEX FLG HD
8..	586 06 75-01.....	1 .....	HOSE, FUEL	22..	539 97 69-78.....	1 .....	NUT 1/4-20 HEX NYLOC
9..	585 31 82-01.....	1 .....	TANK, EXPANSION	23..	539 11 28-99.....	8 .....	NUT 5/16-18 HEX FLG NYLOC
10..	584 99 42-02.....	2 .....	COVER, FAN	24..	819 11 11-16.....	8 .....	WASHER 5/16 SAE FLT
11..	539 11 34-66.....	2 .....	FILTER, HYDRO	25..	539 99 01-18.....	2 .....	WASHER 3/8 SPLT LK
12..	530 09 56-46.....	1 .....	FILTER	26..	539 99 01-87.....	4 .....	WASHER 5/16 SLW
13..	586 07 27-01.....	1 .....	CAP, TANK	27..	539 99 00-55.....	1 .....	WASHER 1/4 SAE FLT
14..	574 86 85-01.....	1 .....	TUBE 10 3/8" SPACER	28..	539 99 01-22.....	2 .....	WASHER 3/8 SAE FLT

# WHEELS



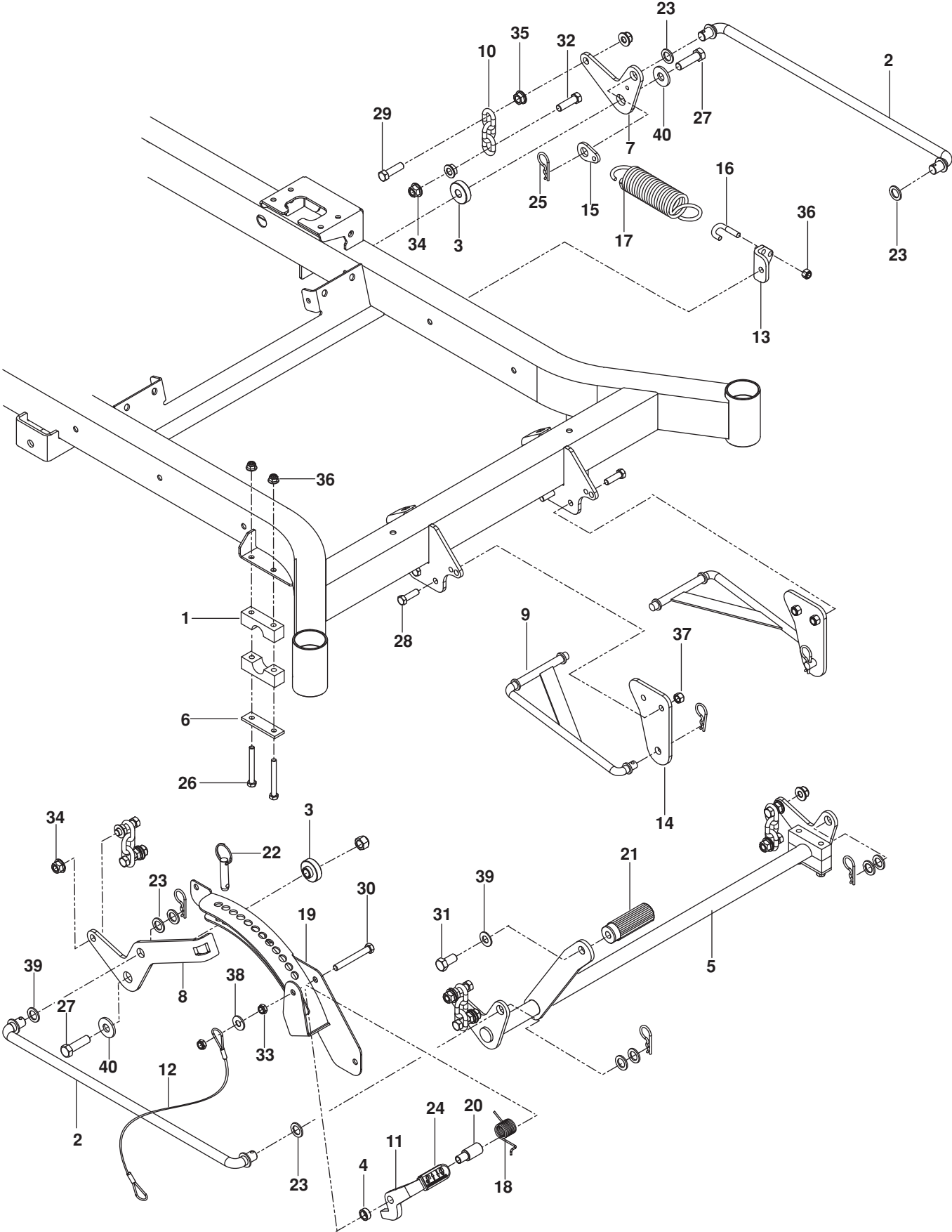


# WHEELS

---

ITEM	PART NO.	QTY.	DESCRIPTION	ITEM	PART NO.	QTY.	DESCRIPTION
1..	580 74 70-01.....	2.....	WHEEL ASSY 22 x 10-10	9..	539 91 22-34.....	2.....	AIR VALVE
2..	581 19 95-01.....	2.....	WHEEL ASSY 13 x 6.5	10..	539 10 28-89.....	2.....	COTTER PIN 1/8 x 2
3..	539 10 25-35.....	2.....	CAP, GREASE	11..	539 10 55-17.....	2.....	BOLT 1/2-13 x 9 1/2 HEX HD
4..	539 10 25-43.....	4.....	BEARING, ROLLER TAPERED	12..	539 10 28-52.....	2.....	NUT 1"-14 SLOTTED JAM
5..	575 32 92-02.....	2.....	YOKE, CASTER, ORG	13..	521 99 11-01 .....	2.....	NUT 1/2-13 HEX FLG NYLOC
6..	539 10 14-74.....	2.....	ZERK	14..	539 10 11-73.....	8.....	NUT 1/2-20 LUG
7..	539 10 28-51.....	2.....	SEAL	15..	539 10 95-54.....	2.....	WASHER 1/2 FLT
8..	575 33 49-01.....	2.....	SPACER, PIVOT				

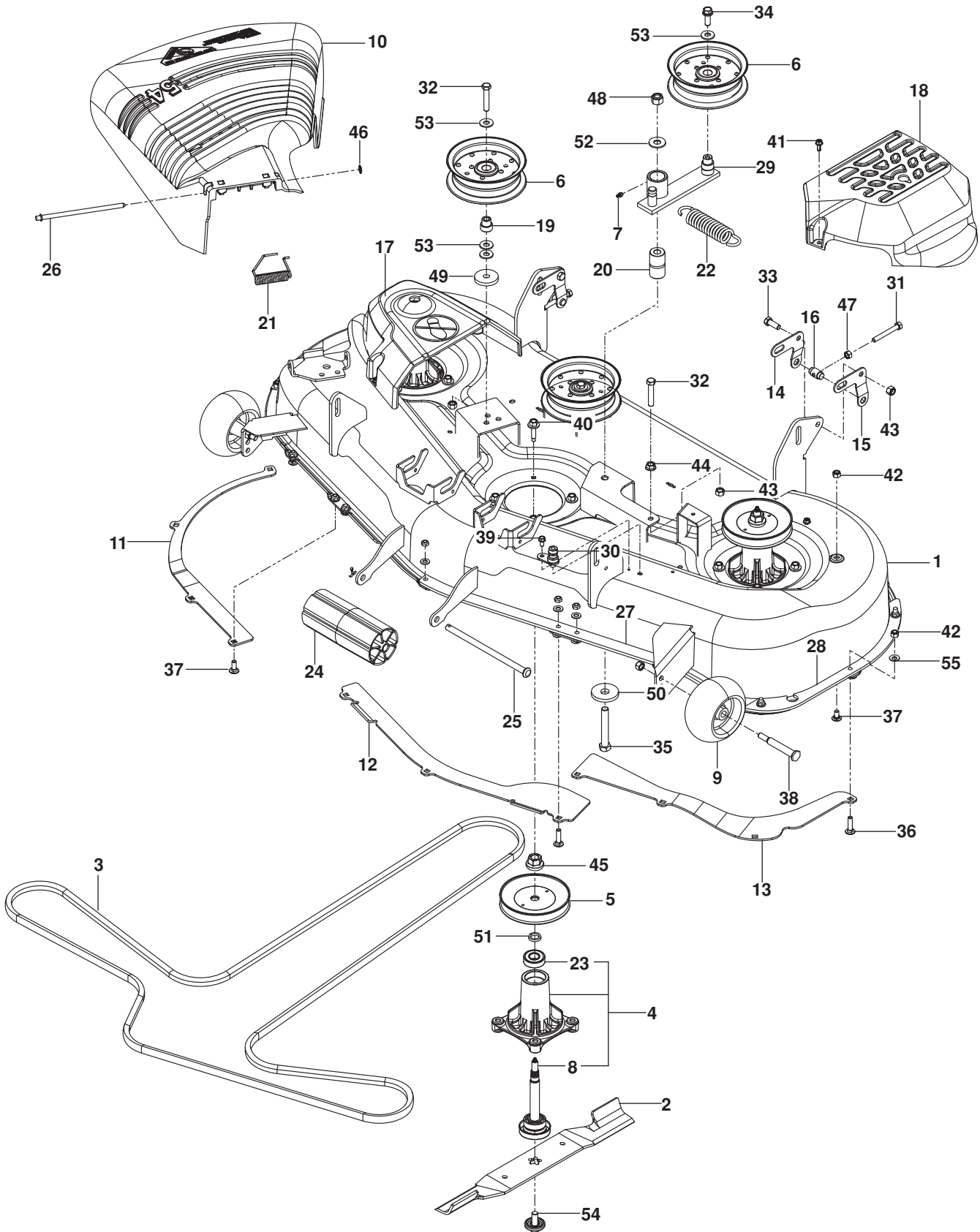
# MOWER LIFT / DECK LIFT



# MOWER LIFT / DECK LIFT

ITEM	PART NO.	QTY.	DESCRIPTION	ITEM	PART NO.	QTY.	DESCRIPTION
1..	539 10 48-08.....	4.....	PILLOW BLOCK	21..	510 40 83-01.....	1.....	PEDAL, FOOT
2..	539 11 08-08.....	2.....	LINK, DECK LIFT	22..	539 13 21-82.....	1.....	PIN ½ x 1½ DETENT RING
3..	586 70 17-01.....	2.....	SPACER, IDLER	23..	539 99 10-43.....	10.....	BUSHING .625
4..	539 13 18-61.....	1.....	SPACER	24..	539 13 28-51.....	1.....	GRIP
5..	581 21 52-02.....	1.....	SHAFT, FRONT LIFT BLK	25..	539 11 55-01.....	6.....	PIN, COTTER 1¾
6..	584 39 27-02.....	2.....	PLATE, REINFORCEMENT	26..	539 10 17-21.....	4.....	BOLT 5/16-18 x 2¾ HEX HD
7..	539 13 18-97.....	1.....	BELLCRANK, RR, LIFT BLK	27..	539 10 81-81.....	2.....	BOLT ½-13 x 1¾ GR 8 HEX HD
8..	539 13 18-53.....	1.....	BELLCRANK, RR, RT BLK	28..	539 97 69-41.....	4.....	BOLT 3/8-16 X 1¼ HEX HD
9..	539 11 22-23.....	2.....	LINKAGE, STRUT	29..	539 10 11-75.....	4.....	BOLT 7/16-14 x 1½ HEX HD
10..	539 10 96-93.....	4.....	LIFT CHAIN-3 LINK	30..	874 78 06-48.....	1.....	BOLT 3/8-16 x 3 HEX HD
11..	539 13 15-66.....	1.....	LATCH, TRANSPORT	31..	539 99 06-46.....	1.....	BOLT ½-13 x 1 HEX HD
12..	539 10 50-59.....	1.....	LANYARD	32..	539 10 80-73.....	4.....	BOLT 7/16-14 x 1¾ HEX HD
13..	539 13 17-91.....	1.....	MOUNT, SPRING	33..	539 20 02-82.....	2.....	NUT 3/8-16 HEX JAM NYLOC
14..	539 13 20-17.....	2.....	MOUNT, STRUT	34..	539 13 20-19.....	8.....	NUT 7/16-14 HEX WHIZ LK
15..	539 13 17-92.....	1.....	TAB, SPRING	35..	539 10 25-82.....	8.....	NUT 7/16-14 HEX WHIZ LK
16..	539 11 28-96.....	1.....	J-BOLT	36..	539 11 28-99.....	5.....	NUT 5/16-18 HEX FLG NYLOC
17..	539 10 26-42.....	1.....	SPRING	37..	539 97 69-79.....	4.....	NUT 3/8-16 HEX NYLOC
18..	539 13 27-34.....	1.....	SPRING, TORSION	38..	819 14 14-16.....	1.....	WASHER 3/8 FLT
19..	539 13 18-50.....	1.....	HEIGHT ADJUST, DECK	39..	539 10 28-43.....	1.....	WASHER 7/16 SPRING
20..	539 13 18-60.....	1.....	PIVOT LATCH, TRANSPORT	40..	539 10 95-54.....	2.....	WASHER ½ FLT

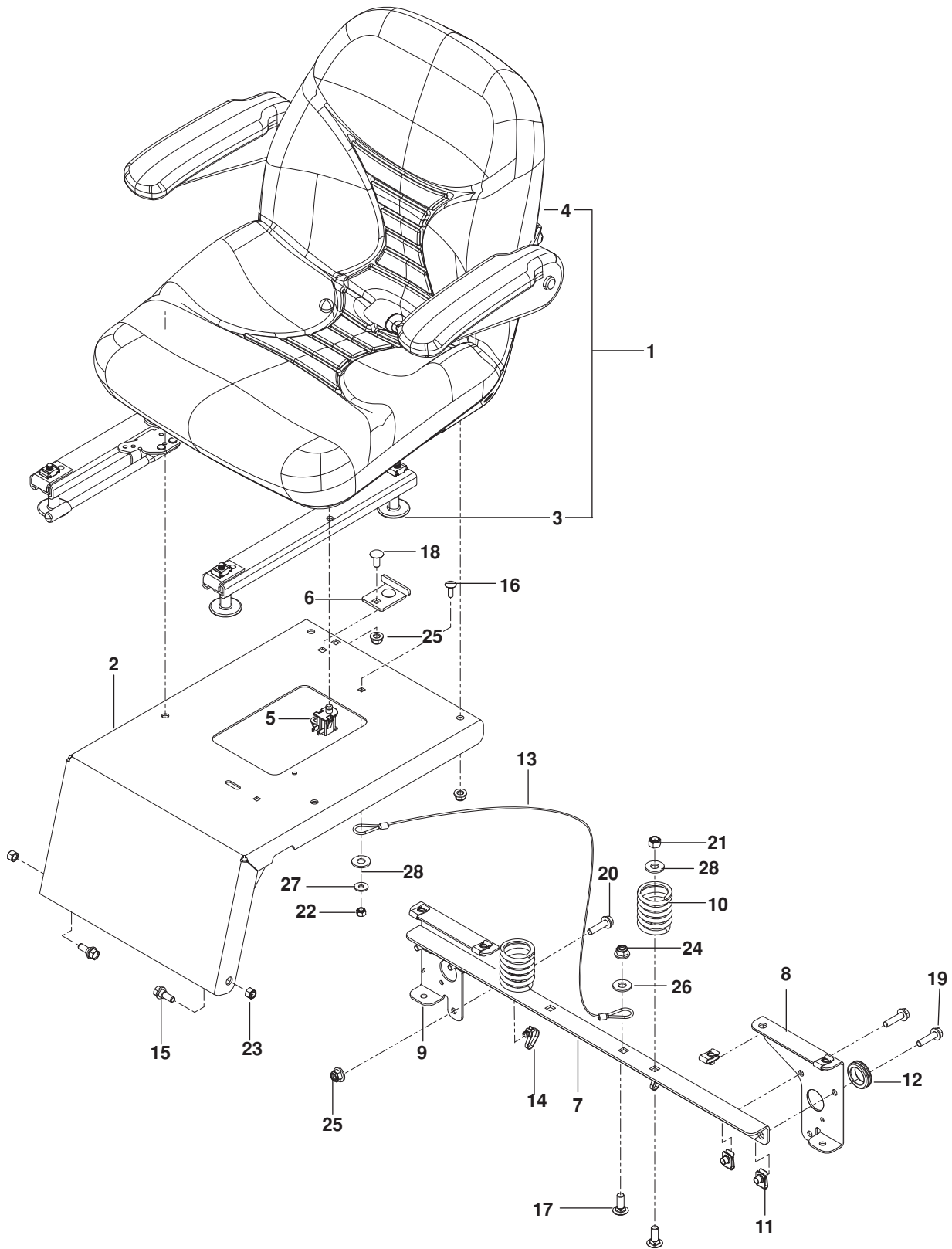
# MOWER DECK / CUTTING DECK



# MOWER DECK / CUTTING DECK

ITEM	PART NO.	QTY.	DESCRIPTION	ITEM	PART NO.	QTY.	DESCRIPTION
1..	577 20 02-03.....	1	DECK w/ SFTY DECALS	29..	539 11 21-98.....	1	ARM, IDLER
2..	532 18 72-56.....	3	BLADE	30..	532 41 55-98.....	1	PORT, WASHOUT
3..	577 50 36-01.....	1	BELT	31..	577 92 32-01.....	2	HCS <sup>5</sup> / <sub>16</sub> -18 x 3 TPBLT
4..	532 18 72-92.....	3	MANDREL ASSY	32..	874 78 06-32.....	3	HCS <sup>3</sup> / <sub>8</sub> -16 x 2
5..	532 17 34-36.....	3	PULLEY	33..	539 99 05-63.....	2	HCS <sup>3</sup> / <sub>8</sub> -16 x 1
6..	539 13 27-28.....	3	PULLEY, IDLER	34..	539 99 05-82.....	1	HCS <sup>3</sup> / <sub>8</sub> -16 x 1 WHIZLK
7..	539 97 69-98.....	1	ZERK	35..	539 10 34-33.....	1	HCS <sup>1</sup> / <sub>2</sub> -13 x 3 <sup>1</sup> / <sub>4</sub>
8..	539 11 20-56.....	1	SHAFT, MANDREL	36..	539 10 04-72.....	7	RHSNB <sup>5</sup> / <sub>16</sub> -18 x 1 <sup>1</sup> / <sub>4</sub>
9..	532 13 39-57.....	2	WHEEL	37..	539 99 07-99.....	6	RHSNB <sup>5</sup> / <sub>16</sub> -18 x <sup>5</sup> / <sub>8</sub>
10..	532 18 72-57.....	1	DEFLECTOR	38..	532 19 34-06.....	2	BOLT, SHLDR <sup>3</sup> / <sub>8</sub> -16 x 3 <sup>5</sup> / <sub>8</sub>
11..	532 18 73-42.....	1	BAFFLE RT	39..	539 10 84-61.....	1	BOLT <sup>1</sup> / <sub>4</sub> -20 x <sup>1</sup> / <sub>2</sub> HWST
12..	532 18 76-07.....	1	BAFFLE, CNTR	40..	532 17 39-84.....	12	SCREW <sup>5</sup> / <sub>16</sub> -18 WSHR HEAD
13..	532 18 73-44.....	1	BAFFLE, LT	41..	539 10 76-31.....	4	SCREW <sup>1</sup> / <sub>4</sub> -20 x <sup>5</sup> / <sub>16</sub> THDROLL
14..	584 85 94-02.....	2	BRACKET, ADJUST RT	42..	873 68 05-00.....	12	NUT <sup>5</sup> / <sub>16</sub> -18 CROWN LK
15..	584 85 94-04.....	2	BRACKET, ADJUST LT	43..	539 97 69-79.....	7	NUT <sup>3</sup> / <sub>8</sub> -16 HEX NYLOC
16..	539 13 18-59.....	2	TRUNNION, PITCH	44..	539 99 06-13.....	1	NUT <sup>3</sup> / <sub>8</sub> -16 HEX WHIZLK
17..	532 18 81-87.....	1	COVER, MANDREL RT	45..	532 40 02-34.....	3	NUT <sup>9</sup> / <sub>16</sub> TOP CENTER LOCK
18..	532 18 72-97.....	1	COVER, MANDREL LT	46..	539 10 76-26.....	1	PUSHNUT
19..	539 11 20-76.....	2	BUSHING, IDLER	47..	539 99 01-96.....	4	NUT <sup>5</sup> / <sub>16</sub> -18 HEX
20..	539 10 34-27.....	1	BUSHING, PIVOT	48..	539 10 13-31.....	1	NUT <sup>1</sup> / <sub>2</sub> HEX NYLOC
21..	532 17 81-02.....	1	SPRING, TORSION	49..	539 10 65-04.....	2	WASHER, HEAVY
22..	539 10 32-56.....	1	SPRING	50..	539 10 22-43.....	1	WASHER, SUPPORT
23..	539 11 20-50.....	1	BEARING, BALL	51..	532 18 76-90.....	3	WASHER, SPACER
24..	532 17 60-66.....	1	ROLLER, NOSE	52..	539 99 05-50.....	1	WASHER <sup>1</sup> / <sub>2</sub> STD FLT
25..	532 17 91-27.....	1	ROD, ROLLER	53..	539 99 05-17.....	7	WASHER <sup>3</sup> / <sub>8</sub> FLAT STD
26..	532 13 14-91.....	1	ROD, HINGE	54..	532 19 30-03.....	3	WASHER/BOLT ASSY
27..	585 32 26-05.....	1	PLATE, FRT	55..	819 11 11-16.....	11	WASHER <sup>5</sup> / <sub>16</sub> SAE FLT
28..	585 32 28-05.....	1	PLATE, SIDE				

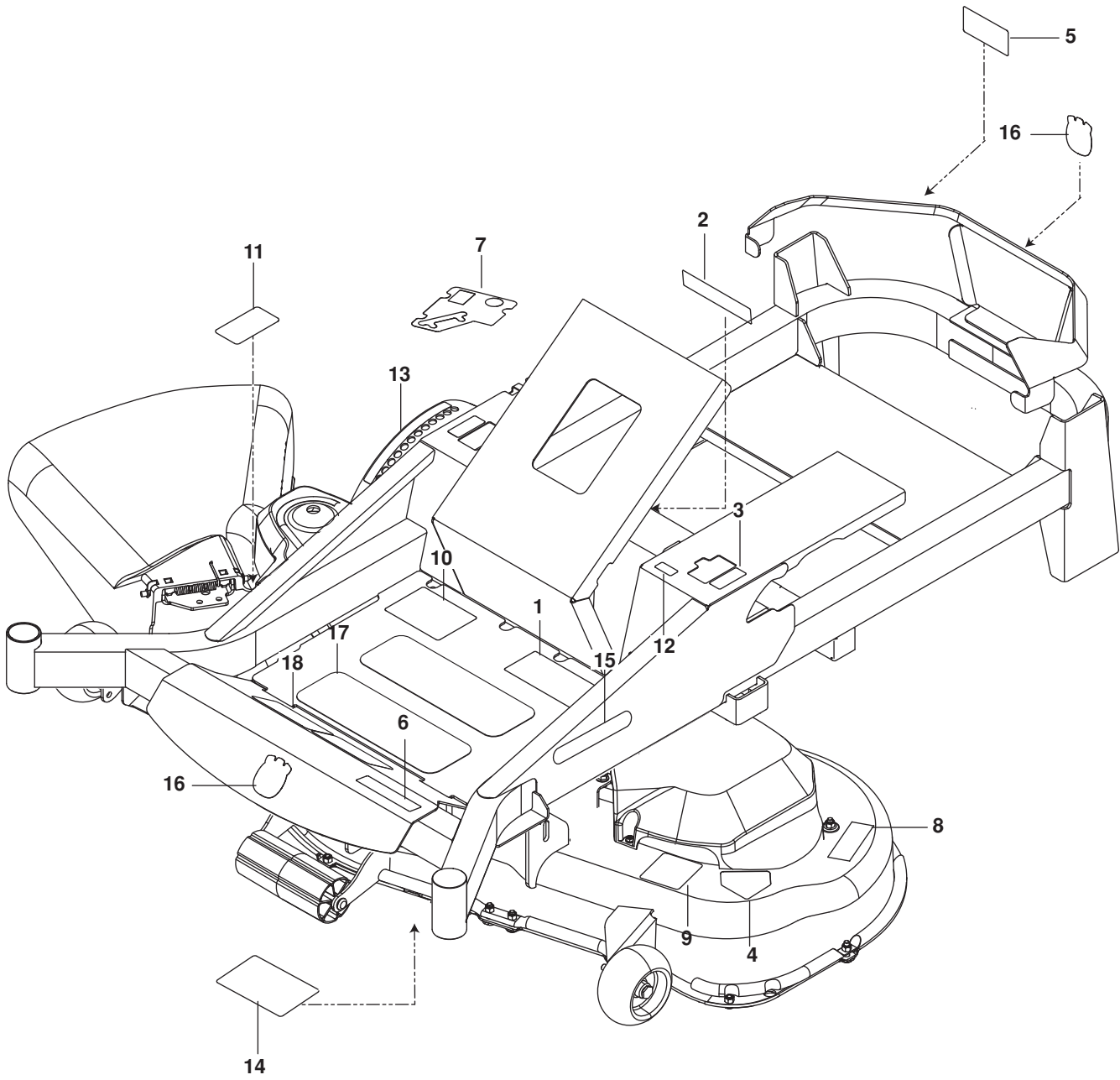
# SEAT



# SEAT

ITEM	PART NO.	QTY.	DESCRIPTION	ITEM	PART NO.	QTY.	DESCRIPTION
1..	539 13 08-73.....	1	SEAT ASSY	14..	505 28 00-01.....	2	TIE WRAP w/ CLIP
2..	575 60 86-01.....	1	MOUNT, SEAT w/ DECAL	15..	539 13 08-96.....	2	BOLT <sup>5</sup> / <sub>16</sub> -18 SHOULDER
3..	539 11 20-37.....	1	RAIL SET, SEAT	16..	539 99 00-74.....	1	BOLT <sup>1</sup> / <sub>4</sub> -40 x <sup>3</sup> / <sub>4</sub> RD HD SQNK
4..	539 11 20-36.....	1	ARM REST, LT	17..	539 99 06-45.....	3	BOLT <sup>3</sup> / <sub>8</sub> -16 x 1 RD HD SQNK
	539 11 20-35.....	1	ARM REST, RT	18..	872 05 05-06.....	2	BOLT <sup>5</sup> / <sub>16</sub> -18 x <sup>3</sup> / <sub>4</sub> RD HD SQNK
5..	532 42 10-62.....	1	SWITCH, SEAT	19..	525 54 40-01.....	4	BOLT <sup>5</sup> / <sub>16</sub> -18 x 1 <sup>1</sup> / <sub>4</sub> HEX FLG HD
6..	539 13 07-93.....	1	DECK STOP	20..	525 46 47-01.....	2	BOLT <sup>5</sup> / <sub>16</sub> -18 x <sup>3</sup> / <sub>4</sub> HEX FLG HD
7..	539 13 16-56.....	1	SUPPORT, SEAT	21..	539 97 69-79.....	2	NUT <sup>3</sup> / <sub>8</sub> -16 HEX NYLOC
8..	584 99 02-02.....	1	SUPPORT, LT	22..	539 97 69-78.....	1	NUT <sup>1</sup> / <sub>4</sub> -20 HEX NYLOC
9..	584 99 01-02.....	1	SUPPORT, RT	23..	539 99 07-17.....	2	NUT <sup>5</sup> / <sub>16</sub> -18 HEX NYLOC
10..	532 12 41-81.....	2	SPRING, SEAT	24..	521 99 65-01.....	1	NUT <sup>3</sup> / <sub>8</sub> -16 HEX FLG NYLOC
11..	539 10 47-63.....	8	RETAINER, U TYPE	25..	539 11 28-99.....	8	NUT <sup>5</sup> / <sub>16</sub> -18 HEX FLG NYLOC
12..	539 10 59-74.....	1	GROMMET RUBBER	26..	539 99 05-17.....	4	WASHER <sup>3</sup> / <sub>8</sub> FLAT STD
13..	539 10 32-47.....	1	LANYARD, SEAT	27..	539 99 05-98.....	1	WASHER <sup>1</sup> / <sub>4</sub> FLAT

# DECALS





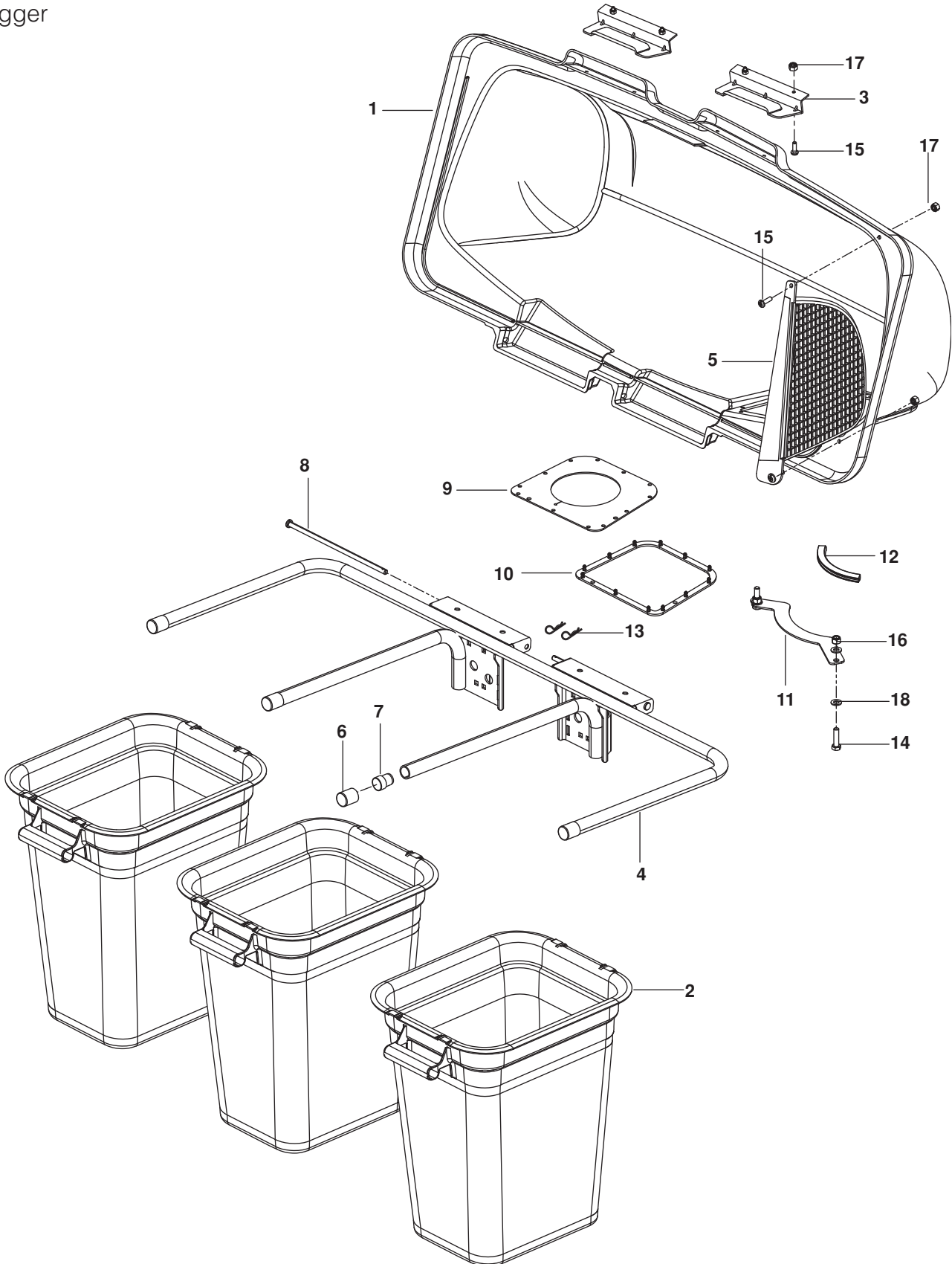
# DECALS

---

ITEM	PART NO.	QTY.	DESCRIPTION	ITEM	PART NO.	QTY.	DESCRIPTION
1..	539 10 79-59	..... 1	.....DECAL, WARNING	10..	586 34 25-01	..... 1	.....DECAL, START
2..	539 10 57-45	..... 1	.....DECAL, BATTERY WARNING	11..	581 72 44-01	..... 1	.....DECAL, DEFLECTOR
3..	539 10 33-33	..... 2	.....DECAL, MOTION CONTROL	12..	539 11 09-74	..... 2	.....DECAL, TRACKING
4..	584 90 46-01	..... 1	.....DECAL, BLADE WARNING	13..	539 13 20-39	..... 1	.....DECAL, HEIGHT ADJUST
5..	539 10 57-44	..... 1	.....DECAL, DANGER BLT DRIVE	14..	539 13 21-87	..... 1	.....DECAL, SERVICE
6..	587 71 81-01	..... 1	.....DECAL, MZ 54S	15..	532 42 91-96	..... 2	.....DECAL, HUSQVARNA
7..	574 84 11-03	..... 1	.....DECAL, CONSOLE	16..	532 42 86-76	..... 2	.....DECAL, CROWN H
8..	539 10 57-46	..... 1	.....DECAL, SEVERING	17..	539 97 77-78	..... 2	.....PAD, ABRASIVE LG
9..	539 11 26-20	..... 1	.....DECAL, BELT ROUTING	18..	539 12 13-22	..... 2	.....PAD, ABRASIVE SM

# ACCESSORIES

Bagger



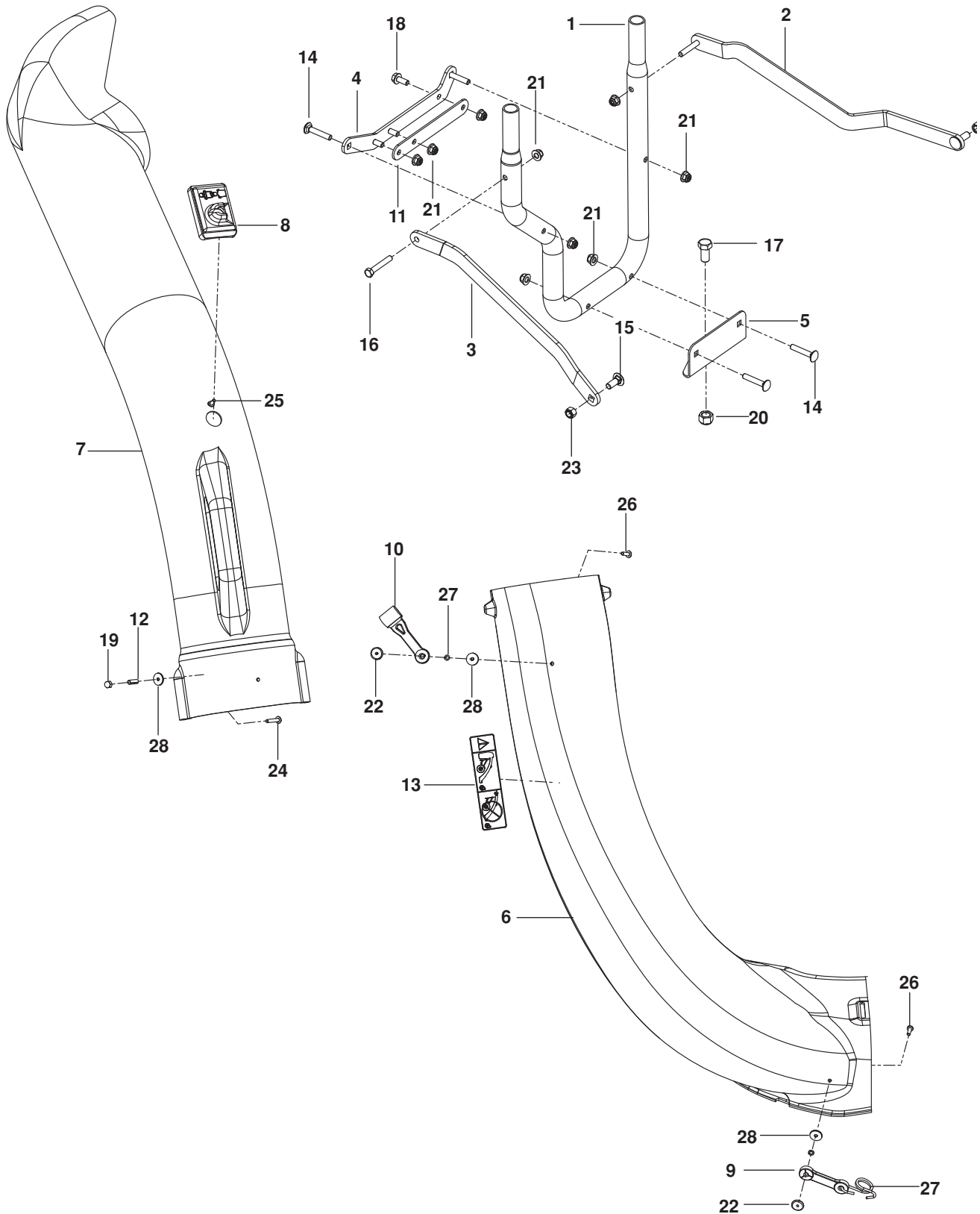
# ACCESSORIES

---

ITEM	PART NO.	QTY.	DESCRIPTION	ITEM	PART NO.	QTY.	DESCRIPTION
1..	532 19 53-73.....	1	COVER	11..	539 11 02-81.....	1	SUPPORT, CHUTE
2..	532 40 02-26.....	3	CONTAINER, SOFT BAG	12..	539 11 22-94.....	1	FLEX TRIM
3..	532 13 08-95.....	2	HANDLE, BAGGER COVER	13..	539 10 80-96.....	2	HAIR PIN
4..	539 10 80-98.....	1	FRAME, BAGGER	14..	539 99 06-27.....	2	BOLT <sup>5</sup> / <sub>16</sub> -18 x 1¼ HEX HD
5..	532 19 27-09.....	1	SCREEN, COVER	15..	539 97 69-52.....	6	SCREW #10-24 x <sup>5</sup> / <sub>8</sub>
6..	539 10 80-97.....	4	PLUG, TUBING END	16..	539 11 28-99.....	2	NUT <sup>5</sup> / <sub>16</sub> -18 HEX FLG NYLOC
7..	522 80 13-01.....	2	PLUG, SPACER	17..	539 97 69-77.....	6	NUT #10-24 CROWNLOCK
8..	532 19 27-86.....	2	PIN, HINGE	18..	819 11 11-16.....	4	WASHER <sup>5</sup> / <sub>16</sub> SAE
9..	532 19 25-50.....	1	SEAL, COVER				
10..	532 19 26-03.....	1	GASKET, COVER				

# ACCESSORIES

## Mount and Chutes



# ACCESSORIES

ITEM	PART NO.	QTY.	DESCRIPTION	ITEM	PART NO.	QTY.	DESCRIPTION
1..	539 131091	1	TUBE, MOUNT	18..	525 464701	3	HHFS $\frac{5}{16}$ -18 x $\frac{3}{4}$
2..	575 953302	1	STRAP, LT BLK	19..	539 108086	1	NUT #10-24 ACORN
3..	539 132198	1	STRAP, RT BLK	20..	539 101331	1	NUT $\frac{1}{2}$ NYLOC
4..	576 221402	1	BRACKET, SUPPORT, BLK	21..	539 112899	9	NUT $\frac{5}{16}$ NYLOC
5..	539 132192	1	HITCH MOUNT, LOWER, BLK	22..	539 108089	3	WELD NUT
6..	539 113204	1	CHUTE, LOWER	23..	539 976979	2	NUT $\frac{3}{8}$ -16 NYLOC
7..	539 108141	1	CHUTE, UPPER	24..	539 108083	1	SCREW #10-24 x $1\frac{1}{8}$
8..	539 108082	1	DUMP BAG INDICATOR	25..	539 108081	1	SCREW #10-14 x $\frac{1}{2}$
9..	539 108194	2	LATCH	26..	539 976952	3	SCREW #10-24 x $\frac{5}{8}$
10..	539 108088	1	LATCH, HOOD	27..	539 109552	3	LOCKWASHER $\frac{3}{16}$
11..	576 221502	1	PLATE, SPACER BLK	28..	539 108084	4	WASHER $\frac{3}{16}$ x $\frac{3}{4}$ 16 GA
12..	539 108085	1	SPACER, SPLIT	NOT SHOWN			
13..	539 108163	1	DECAL, CATCHER		539 110290	1	STRIP, FOAM
14..	539 990861	4	RHSNB $\frac{5}{16}$ -18 x $1\frac{3}{4}$				
15..	539 990645	2	RHSNB $\frac{3}{8}$ -16 x 1				
16..	539 976937	2	HCS $\frac{5}{16}$ -18 x 2				
17..	539 990646	1	HCS $\frac{1}{2}$ -13 x 1				





[www.husqvarna.com](http://www.husqvarna.com)

**115 72 29-27 Rev A**  
**2014-09-15**