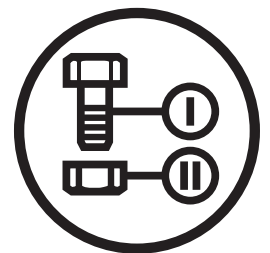




Parts Manual

Z 242F

Zero Turn Mower / 967324401-00



Please read the operator manual carefully and make sure you understand the instructions before using the machine.

When you need spare parts or support in service questions, warranty issues, etc., please consult the following professional:

This manual belongs to the machine with the manufacturing number:	Engine	Transmission

Manufacturing Number

The machine's manufacturing number can be found on the printed plate affixed to the engine compartment.

Stated on the plate, from the top are:

- The machine's type designation (I.D.).
- The manufacturer's type number (Model).
- The machine's serial number (Serial no.)

Please have the type designation and serial number available when ordering spare parts.

The engine's manufacturing number is stamped on one of the valve covers.

The plate states:

- The engine's model.
- The engine's type.
- Code

Please have these available when ordering spare parts.

The wheel motors and hydrostatic pumps have a barcode decal affixed at the rear.

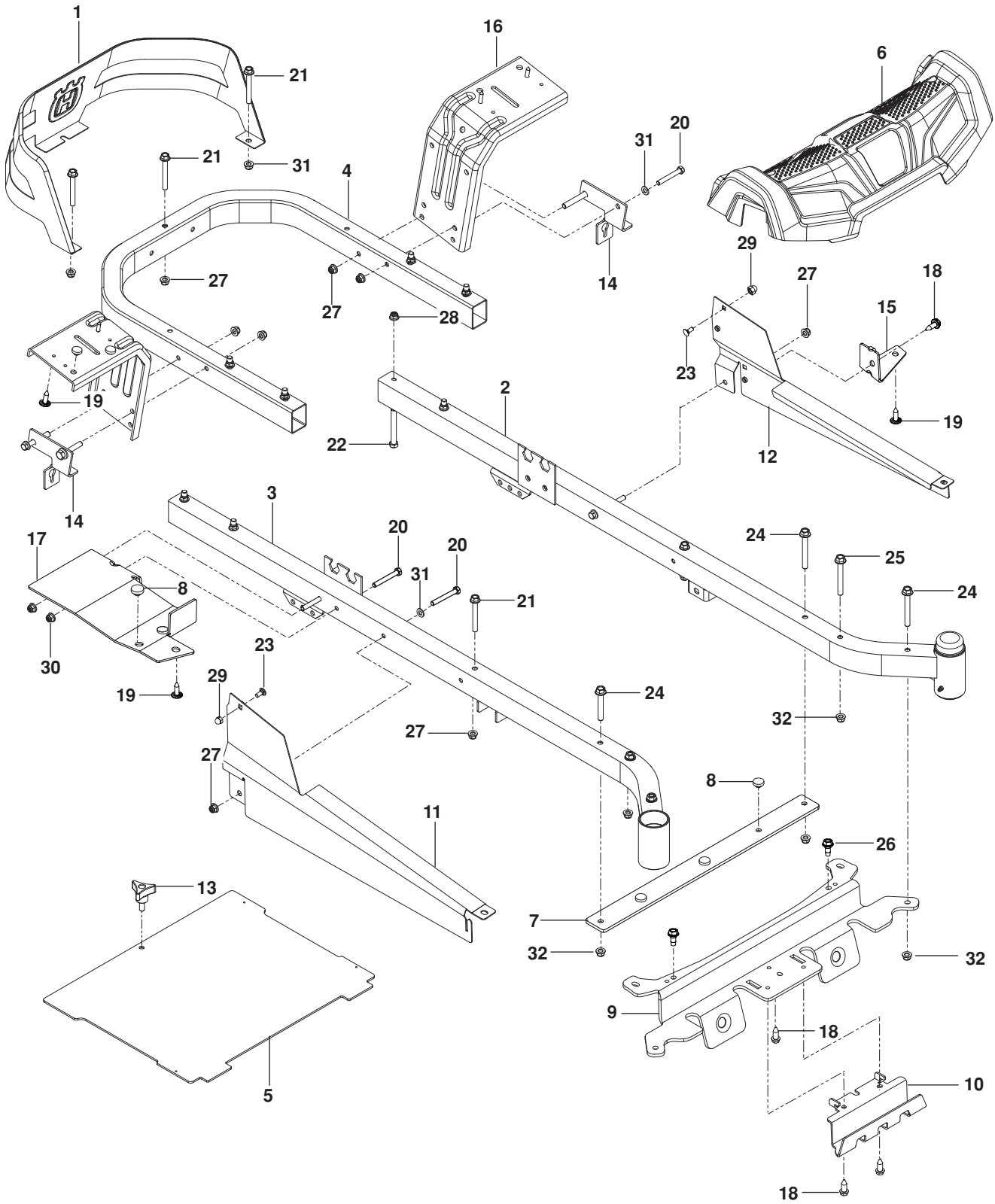
CONTENTS

FRAME.....	4
ENGINE PLATE.....	6
STEERING	8
IGNITION.....	10
BRAKE / LIFT.....	12
HYDRAULIC PUMP - MOTOR.....	14
WHEELS AND TIRES.....	16
MOWER DECK / CUTTING DECK.....	18
SEAT	20
DECALS.....	22

Illustrations may or may not represent the actual assemblies and it is not recommended to use this manual as a guide to assemble or disassemble the mower.

NOTE: All fasteners are Grade 5 unless otherwise specified.

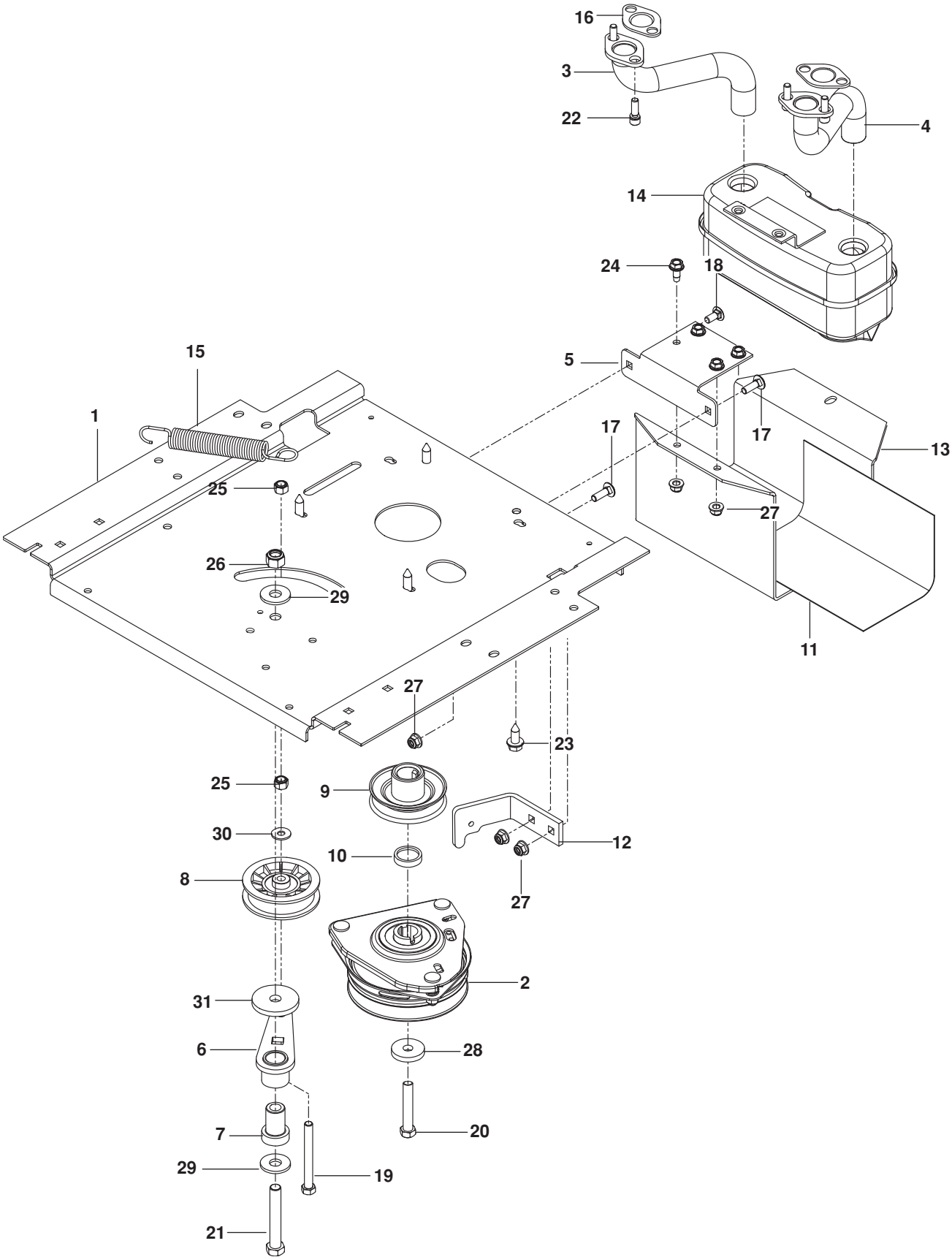
FRAME



FRAME

ITEM	PART NO.	QTY.	DESCRIPTION	ITEM	PART NO.	QTY.	DESCRIPTION
1..	585 03 98-02.....	1	GUARD, REAR BLK	17..	585 52 34-04.....	1	SUPPORT, CONSOLE RT
2..	510 17 75-03.....	1	FRAME, FRONT RT ORG	18..	817 00 05-10.....	4	SCREW $\frac{5}{16}$ -18 x $\frac{5}{8}$ WSH HD
3..	510 17 74-03.....	1	FRAME, FRONT LT ORG	19..	532 41 63-58.....	6	SCREW #10-24 x $\frac{3}{4}$ HEX HD
4..	584 99 10-02.....	1	FRAME, REAR TUBE ORG	20..	874 78 05-36.....	8	BOLT $\frac{5}{16}$ -18 x 2 $\frac{1}{4}$
5..	522 84 29-02.....	1	FOOT PLATE w/ SAFETY DECAL	21..	874 78 05-44.....	5	BOLT $\frac{5}{16}$ -18 x 2 $\frac{3}{4}$
6..	585 52 24-01.....	1	COVER, FOOTREST	22..	874 78 06-48.....	8	BOLT $\frac{3}{8}$ -16 x 3
7..	585 52 30-04.....	1	SUPPORT, FOOTREST	23..	585 94 00-01.....	2	BOLT $\frac{5}{16}$ -18 x 1 CARRIAGE
8..	585 98 93-01.....	7	GROMMET, BUMPER	24..	577 11 77-01.....	4	BOLT $\frac{3}{8}$ -16 x 3
9..	585 52 31-04.....	1	CROSS MEMBER	25..	586 65 43-01.....	2	BOLT $\frac{3}{8}$ -16 x 3 SHOULDER
10..	585 52 32-04.....	1	PLATE, SKID SILV	26..	586 88 11-01.....	2	BOLT $\frac{5}{16}$ -18 SHOULDER
11..	585 33 16-02.....	1	COVER, RAIL RT	27..	539 11 28-99.....	9	NUT $\frac{5}{16}$ -18 HEX FLG NYLOC
12..	585 33 15-02.....	1	COVER, RAIL LT	28..	521 99 65-01.....	8	NUT $\frac{3}{8}$ -16 HEX FLG NYLOC
13..	539 10 44-11.....	1	KNOB w/ STUD	29..	585 93 81-01.....	2	NUT $\frac{5}{16}$ -18 ACORN
14..	585 47 43-02.....	2	BRACKET, BYPASS ROD	30..	873 90 05-00.....	2	NUT $\frac{5}{16}$ -18 HEX FLG LCK
15..	585 52 36-04.....	1	SUPPORT, CONSOLE LT	31..	819 11 11-16.....	6	WASHER $\frac{5}{16}$ SAE FLT
16..	580 50 13-02.....	2	SUPPORT, FENDER BLK				

ENGINE PLATE

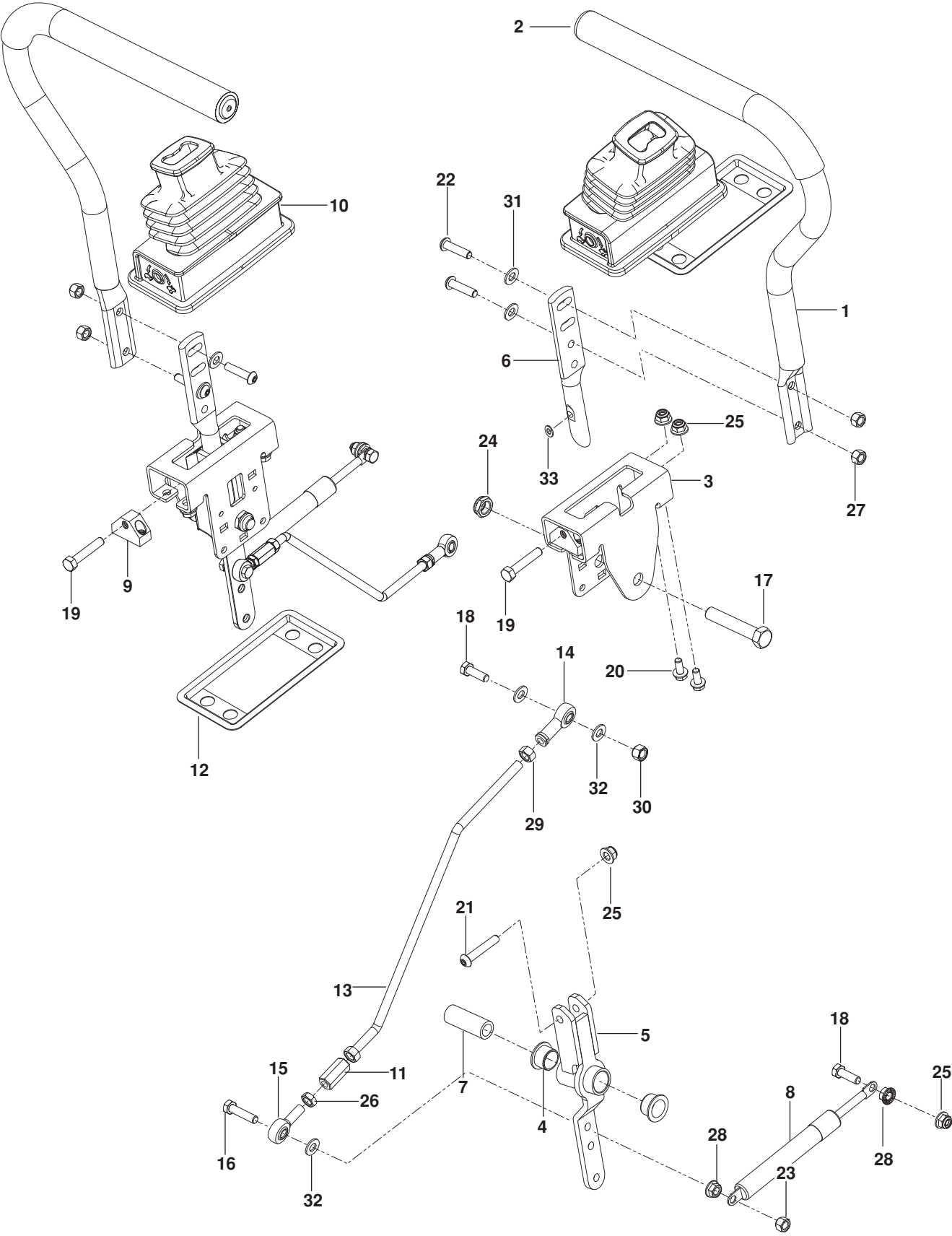


ENGINE PLATE

ITEM	PART NO.	QTY.	DESCRIPTION
1..	587 48 07-02.....	1	PLATE, ENGINE BLK
2..	532 40 00-08.....	1	CLUTCH
3..	581 88 11-01.....	1	TUBE, EXHAUST RT
4..	581 88 10-01.....	1	TUBE, EXHAUST LT
5..	581 88 67-02.....	1	BRACKET, MUFFLER BLK
6..	532 44 81-45.....	1	ARM, IDLER
7..	539 10 12-31.....	1	SPINDLE, IDLER
8..	539 11 03-11.....	1	PULLEY, IDLER
9..	539 11 45-30.....	1	PULLEY, ENGINE
10..	577 09 46-01.....	1	SPACER
11..	539 13 28-59.....	1	SHIELD, HEAT
12..	522 44 25-06.....	1	STOP, CLUTCH BLK
13..	587 45 12-02.....	1	GUARD, MUFFLER BLK
14..	539 13 16-04.....	1	MUFFLER ASSY
15..	532 19 61-05.....	1	SPRING, DECK DRIVE
16..	532 16 53-91.....	2	GASKET, MUFFLER
17..	872 14 05-08.....	2	BOLT $\frac{5}{16}$ -18 x 1 RD HD SQNK
18..	872 14 05-06.....	1	BOLT $\frac{5}{16}$ -18 x $\frac{3}{4}$ RD HD SQNK

ITEM	PART NO.	QTY.	DESCRIPTION
19..	874 52 06-56.....	1	BOLT $\frac{3}{8}$ -16 x $3\frac{1}{2}$ HEX HD
20..	581 33 28-03.....	1	BOLT $\frac{7}{16}$ -20 x $2\frac{1}{2}$ HEX HD
21..	874 78 08-52.....	1	BOLT $\frac{1}{2}$ -13 x $3\frac{1}{4}$ HEX HD
22..	532 18 39-06.....	4	SCREW, SCKT HD
23..	817 12 06-16.....	4	SCREW $\frac{3}{8}$ -16 x 1 THD FRM
24..	817 49 05-12.....	4	SCREW $\frac{5}{16}$ -18 x $\frac{3}{4}$ THD FRM
25..	539 97 69-79.....	2	NUT $\frac{3}{8}$ -16 HEX NYLOC
26..	873 80 08-00.....	1	NUT $\frac{1}{2}$ -13 HEX NYLOC
27..	539 11 28-99.....	5	NUT $\frac{5}{16}$ -18 HEX FLG NYLOC
28..	532 12 61-97.....	1	WASHER, CLUTCH
29..	819 18 22-12.....	2	WASHER $\frac{1}{2}$ FLT
30..	819 12 14-14.....	2	WASHER $\frac{5}{16}$ STD FLT
31..	539 11 26-70.....	1	WASHER, HEAVY
NOT SHOWN			
	-----	1	ENGINE, BRIGGS & STRATTON 44T677 22 HP For engine service and replacement parts, see a B&S dealer

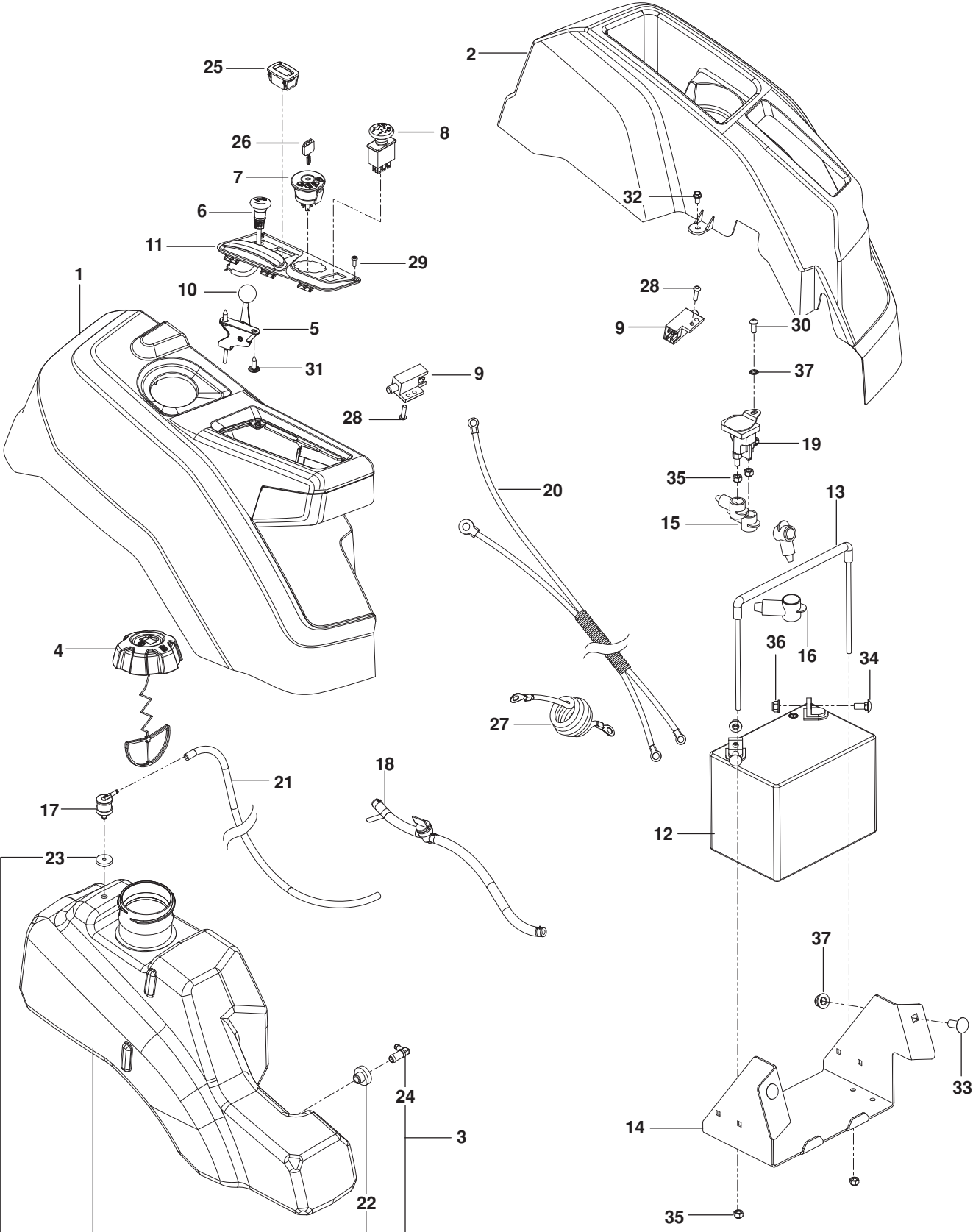
STEERING



STEERING

ITEM	PART NO.	QTY.	DESCRIPTION	ITEM	PART NO.	QTY.	DESCRIPTION
1..	581 82 67-01.....	2.....	LEVER w/ GRIP	18..	874 78 05-16.....	4.....	BOLT ⁵ / ₁₆ -18 x 1 THD FRM
2..	525 39 29-01.....	2.....	GRIP, FOAM	19..	585 98 61-01.....	2.....	BOLT ⁵ / ₁₆ -18 x 1 ¹ / ₄
3..	585 12 47-02.....	2.....	BRACKET, CONTROL	20..	874 49 05-12.....	8.....	BOLT HEX FLG ⁵ / ₁₆ -18 X ³ / ₄
4..	539 13 15-18.....	4.....	BEARING, FLANGED	21..	576 85 04-02.....	2.....	SCREW ⁵ / ₁₆ -18 X 1 ³ / ₄ BTN HD
5..	576 14 03-01.....	2.....	CONTROL, LEVER	22..	585 98 59-01.....	4.....	SCREW ⁵ / ₁₆ -18 X 1 ¹ / ₄ BTN BLK
6..	587 60 17-02.....	2.....	LEVER, HANDLE	23..	873 80 05-00.....	2.....	NUT ⁵ / ₁₆ -18 HEX NYLOC
7..	584 92 72-01.....	2.....	SPACER, PIVOT CONTROL	24..	539 10 80-10.....	2.....	NUT ¹ / ₂ -13 HEX JAM NYL GR2
8..	539 10 27-20.....	2.....	DAMPENER	25..	539 11 28-99.....	12.....	NUT ⁵ / ₁₆ -18 HEX FLG NYLOC
9..	581 43 75-01	2.....	BLOCK, TRACKING	26..	873 70 05-00.....	2.....	NUT ⁵ / ₁₆ -24 HEX JAM LH
10..	585 83 16-01.....	2.....	BOOT, STEERING	27..	585 98 60-01.....	4.....	NUT ⁵ / ₁₆ -18 HEX NYLOC BLK
11..	539 11 66-89.....	2.....	COUPLER, ROD END	28..	539 99 05-85.....	4.....	NUT ⁵ / ₁₆ -18 HEX WHIZLK
12..	585 48 82-02.....	2.....	FLANGE, BOOT	29..	539 99 02-23.....	4.....	NUT ⁵ / ₁₆ -24 HEX
13..	580 62 42-01.....	2.....	ROD, MOTION CONTROL	30..	539 11 56-17.....	2.....	NUT ⁵ / ₁₆ -18 THIN NYLOC
14..	539 11 57-29.....	2.....	ROD END RH	31..	586 30 91-01.....	4.....	WASHER ⁵ / ₁₆ SAE FLT BLK
15..	539 11 66-90.....	2.....	ROD END MALE LH	32..	819 11 11-16.....	6.....	WASHER ⁵ / ₁₆ SAE FLT
16..	874 78 05-28.....	2.....	BOLT ⁵ / ₁₆ -18 x 1 ³ / ₄ TPBLT	33..	587 61 42-01.....	2.....	WASHER ¹¹ / ₃₂
17..	874 78 08-44.....	2.....	BOLT ¹ / ₂ -13 x 2 ³ / ₄				

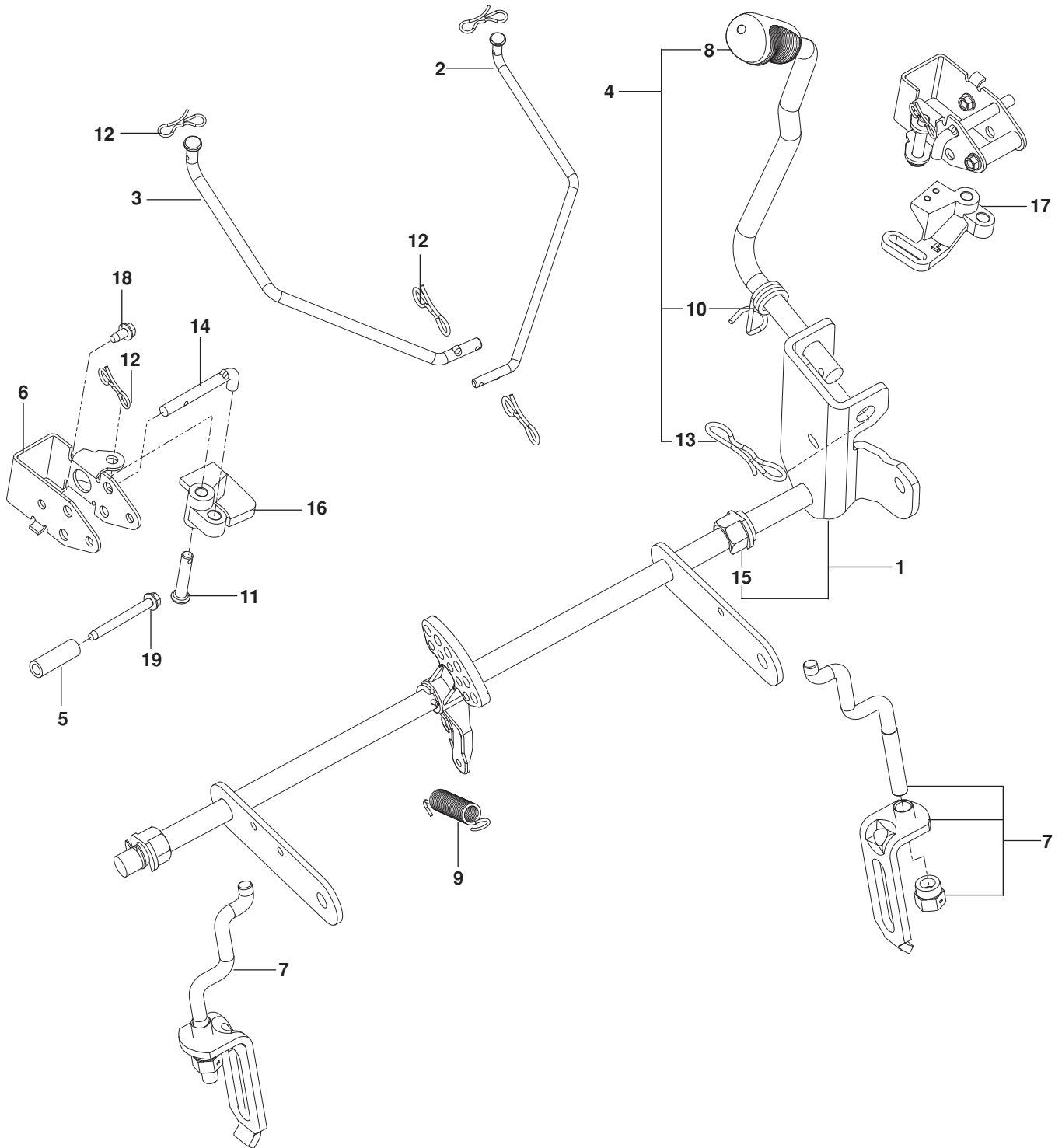
IGNITION



IGNITION

ITEM	PART NO.	QTY.	DESCRIPTION	ITEM	PART NO.	QTY.	DESCRIPTION
1..	585 52 28-01.....	1	ASSY, FENDER, RT GRY	21..	587 04 45-23.....	1	HOSE $\frac{3}{16}$ x 23" PURGE
2..	586 62 12 01.....	1	ASSY, FENDER, LT GRY	22..	532 00 36-45.....	1	GROMMET, RUBBER
3..	578 18 06-02.....	1	ASSY, FUEL TANK	23..	532 43 74-92.....	1	GROMMET, CHECK VALVE
4..	585 12 48-01.....	1	CAP, FUEL w/ TETHER	24..	532 13 92-77.....	1	ELBOW
5..	539 11 24-38.....	1	CABLE, THROTTLE	25..	586 16 18-01.....	1	METER, SERVICE
6..	586 88 15-01.....	1	CONTROL, CHOKE	26..	532 14 04-01.....	1	KEY, IGNITION
7..	539 10 75-41.....	1	SWITCH, IGNITION	27..	539 10 33-06.....	1	CABLE, BATTERY POSITIVE
8..	532 17 46-52.....	1	SWITCH, CLUTCH	28..	586 93 60-01.....	2	SCREW #10-24 x $\frac{1}{2}$ SKT HD
9..	587 60 15-01.....	2	SWITCH, INTERLOCK	29..	545 22 71-01.....	2	SCREW 6-19 x $\frac{7}{16}$ PAN HD
10..	539 13 30-49.....	1	KNOB	30..	539 11 12-29.....	1	SCREW $\frac{1}{4}$ -20 x $\frac{5}{8}$ BTN SKT
11..	585 52 27-01.....	1	PANEL, CONTROL	31..	532 14 18-41.....	2	SCREW 10-16 x .65
12..	539 10 24-36.....	1	BATTERY	32..	817 49 04-08.....	2	BOLT $\frac{1}{4}$ -20 x $\frac{1}{2}$
13..	539 13 12-09.....	1	TIE DOWN, BATTERY	33..	539 99 06-45.....	2	BOLT $\frac{3}{8}$ -16 x 1 RDHD SQNK
14..	585 04 87-02.....	1	BOX, BATTERY BLK	34..	872 14 05-06.....	2	BOLT $\frac{5}{16}$ -18 x $\frac{3}{4}$ RDHD SQNK
15..	532 13 15-63.....	3	TERMINAL COVER	35..	873 80 04-00.....	5	NUT $\frac{1}{4}$ -20 HEX NYLOC
16..	539 10 27-59.....	1	INSULATOR	36..	539 11 28-99.....	2	NUT $\frac{5}{16}$ -18 FLANGE NYLOC
17..	576 61 81-01.....	1	VALVE, FUEL CHECK	37..	521 99 65-01.....	2	NUT $\frac{3}{8}$ -16 HEX FLG NYLOC
18..	586 12 39-04.....	1	ASSY, FUEL LINE w/ VALVE	38..	539 99 00-53.....	1	WASHER $\frac{1}{4}$ ITLW
19..	532 19 25-07.....	1	SOLENOID	NOT SHOWN			
20..	587 19 86-01.....	1	HARNESS, BATTERY CABLE	586 33 73-01	1	HARNESS, WIRING	

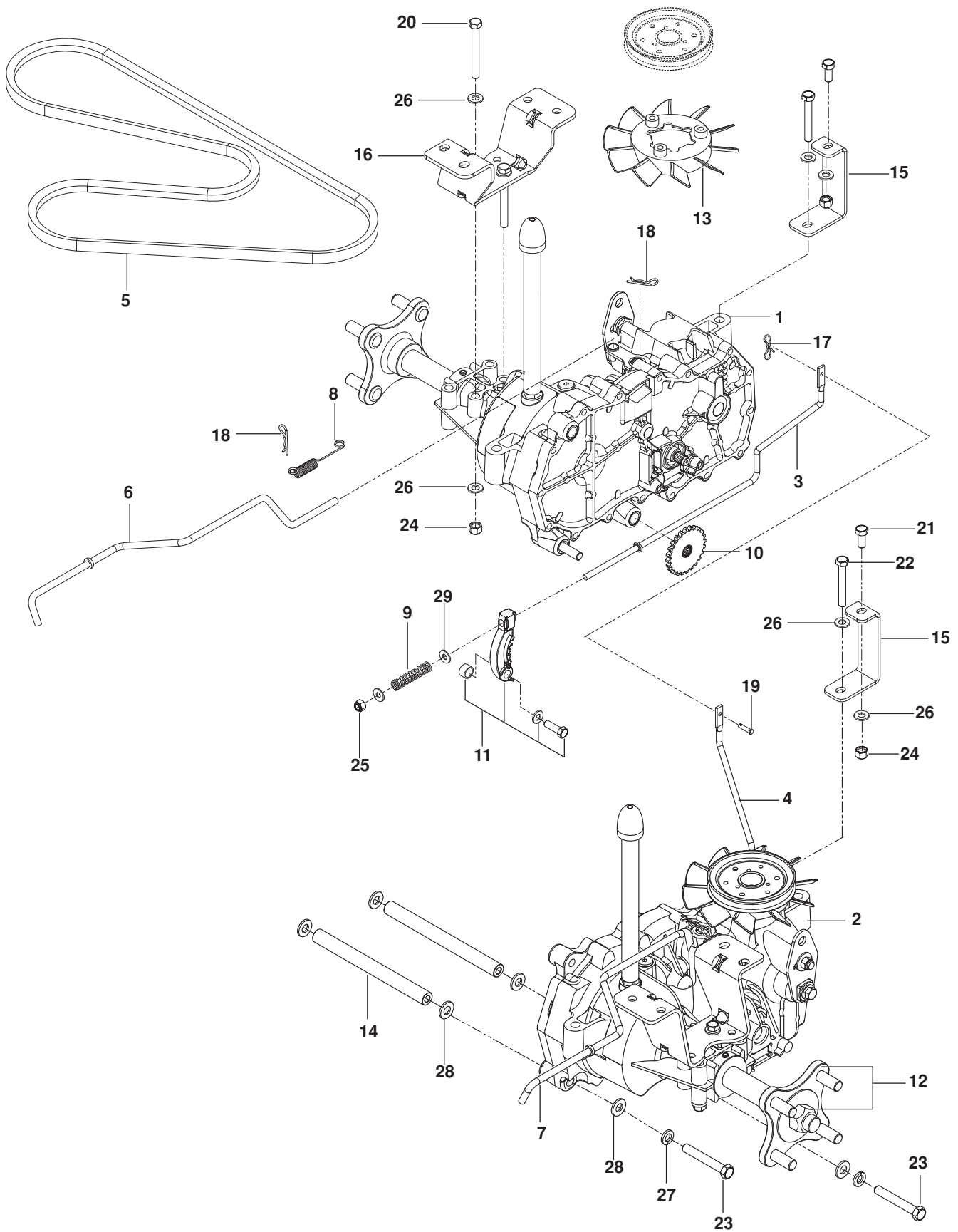
BRAKE / LIFT



BRAKE / LIFT

ITEM	PART NO.	QTY.	DESCRIPTION	ITEM	PART NO.	QTY.	DESCRIPTION
1..	587 62 31-01.....	1	ASSY, SHAFT w/ NUTS, E-RINGS	11..	585 70 14-01.....	2	PIN ½ CLEVIS
2..	586 45 71-01.....	1	LINK, BRAKE LT	12..	587 22 53-01.....	6	CLIP
3..	586 45 72-01.....	1	LINK, BRAKE RT	13..	532 19 42-09.....	1	CLIP
4..	587 62 29-01.....	1	ASSY, LIFT HANDLE	14..	585 68 20-01.....	2	PUSHROD
5..	580 48 61-01.....	2	SPACER	15..	510 18 49-01.....	2	NUT, PLASTIC
6..	585 68 21-01.....	2	BRACKET, BELLCRANK	16..	586 45 75-01.....	1	BELLCRANK RT
7..	587 62 30-01.....	2	ASSY, CENTERING LNK	17..	586 45 74-01.....	1	BELLCRANK LT
8..	532 44 50-60.....	1	GRIP, HANDLE	18..	532 13 77-29.....	2	SCREW ¼-20 x 5/8 THD ROLL
9..	586 86 76-01.....	1	SPRING	19..	586 56 13-01.....	2	SCREW ¼-20 x 2¼ THD ROLL
10..	532 19 63-14.....	1	SPRING				

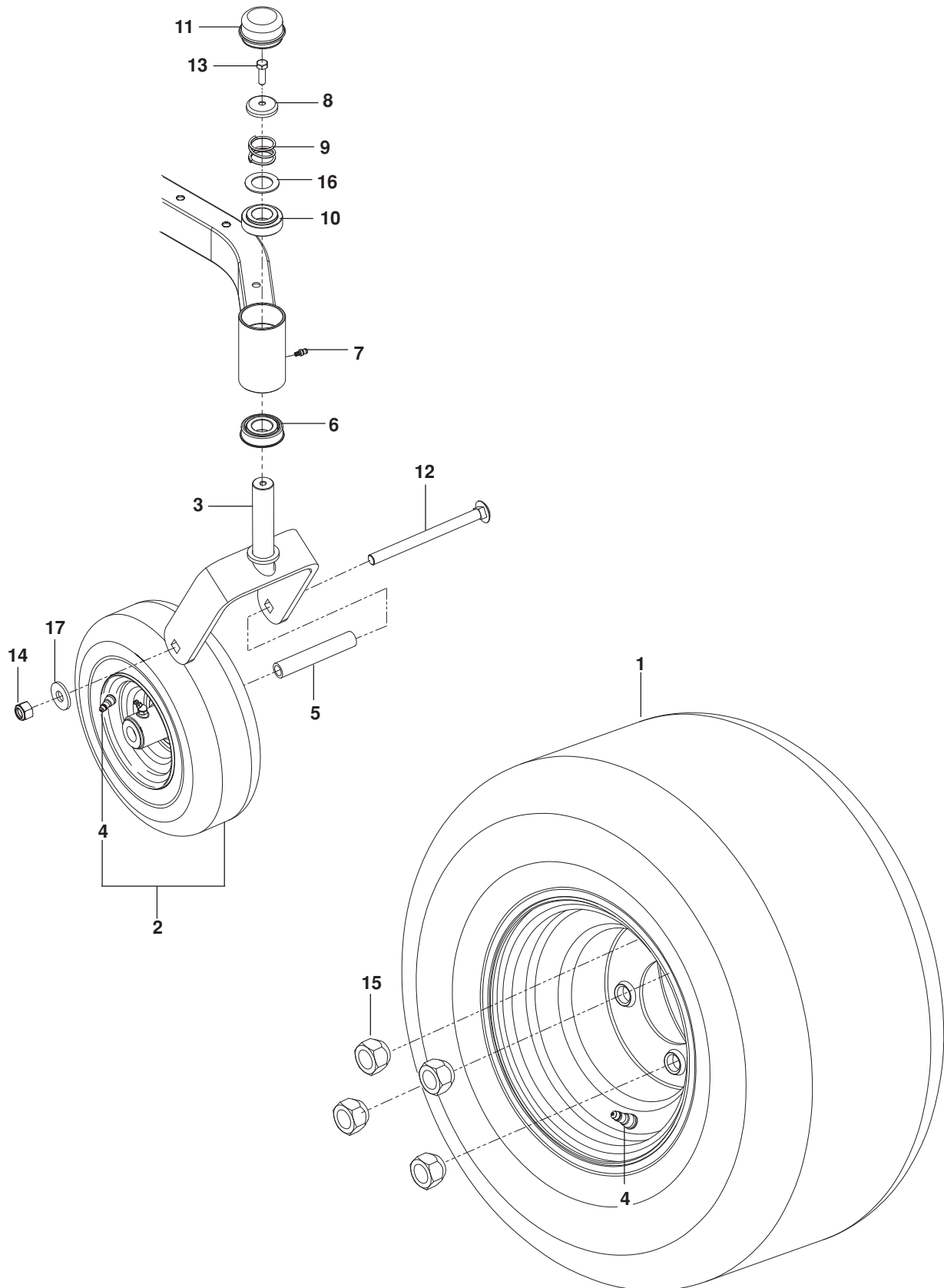
HYDRAULIC PUMP - MOTOR



HYDRAULIC PUMP-MOTOR

ITEM	PART NO.	QTY.	DESCRIPTION	ITEM	PART NO.	QTY.	DESCRIPTION
1..	510 37 56-01.....	1	EZT, LT	16..	580 80 66-02.....	2	MOUNT, EZT RR BLK
2..	510 37 56-02.....	1	EZT, RT	17..	587 22 53-01.....	1	CLIP
3..	574 03 05-01.....	1	ROD, EZT BRAKE LT	18..	539 97 69-88.....	4	CLIP
4..	574 03 05-02.....	1	ROD, EZT BRAKE RT	19..	587 11 53-01.....	1	PIN, CLEVIS
5..	539 11 04-11.....	1	BELT, EZT	20..	874 78 05-44.....	4	BOLT ⁵ / ₁₆ -18 x 2 ³ / ₄
6..	585 47 44-01.....	1	ROD, BYPASS LT	21..	874 78 05-12.....	2	BOLT ⁵ / ₁₆ -18 x ³ / ₄
7..	585 47 45-01.....	1	ROD, BYPASS RT	22..	874 78 05-36.....	2	BOLT ⁵ / ₁₆ -18 x 2 ¹ / ₄
8..	586 66 51-01.....	2	SPRING, BYPASS	23..	874 78 06-40.....	4	BOLT ³ / ₈ -16 x 2 ¹ / ₂
9..	539 11 03-42.....	2	SPRING, BRAKE ROD	24..	873 80 05-00.....	8	NUT ⁵ / ₁₆ -18 HEX NYLOC
10..	539 12 00-80.....	2	COG, BRAKE DISC	25..	873 80 04-00.....	2	NUT ¹ / ₄ -20 HEX NYLOC
11..	539 12 00-79.....	2	ASSY, BRAKE ARM	26..	819 11 11-16.....	16	WASHER ⁵ / ₁₆ SAE FLT
12..	575 50 70-01.....	1	ASSY, HUB w/ NUTS	27..	810 03 06-00.....	4	WASHER ³ / ₈ SPLT LCK
13..	539 12 07-85.....	2	BLADE, FAN	28..	819 13 13-16.....	8	WASHER ³ / ₈ SAE FLT
14..	510 18 41-04.....	2	SPACER TUBE	29..	819 09 10-16.....	4	WASHER ¹ / ₄ SAE FLT
15..	580 80 65-02.....	2	SUPPORT, EZT FRT				

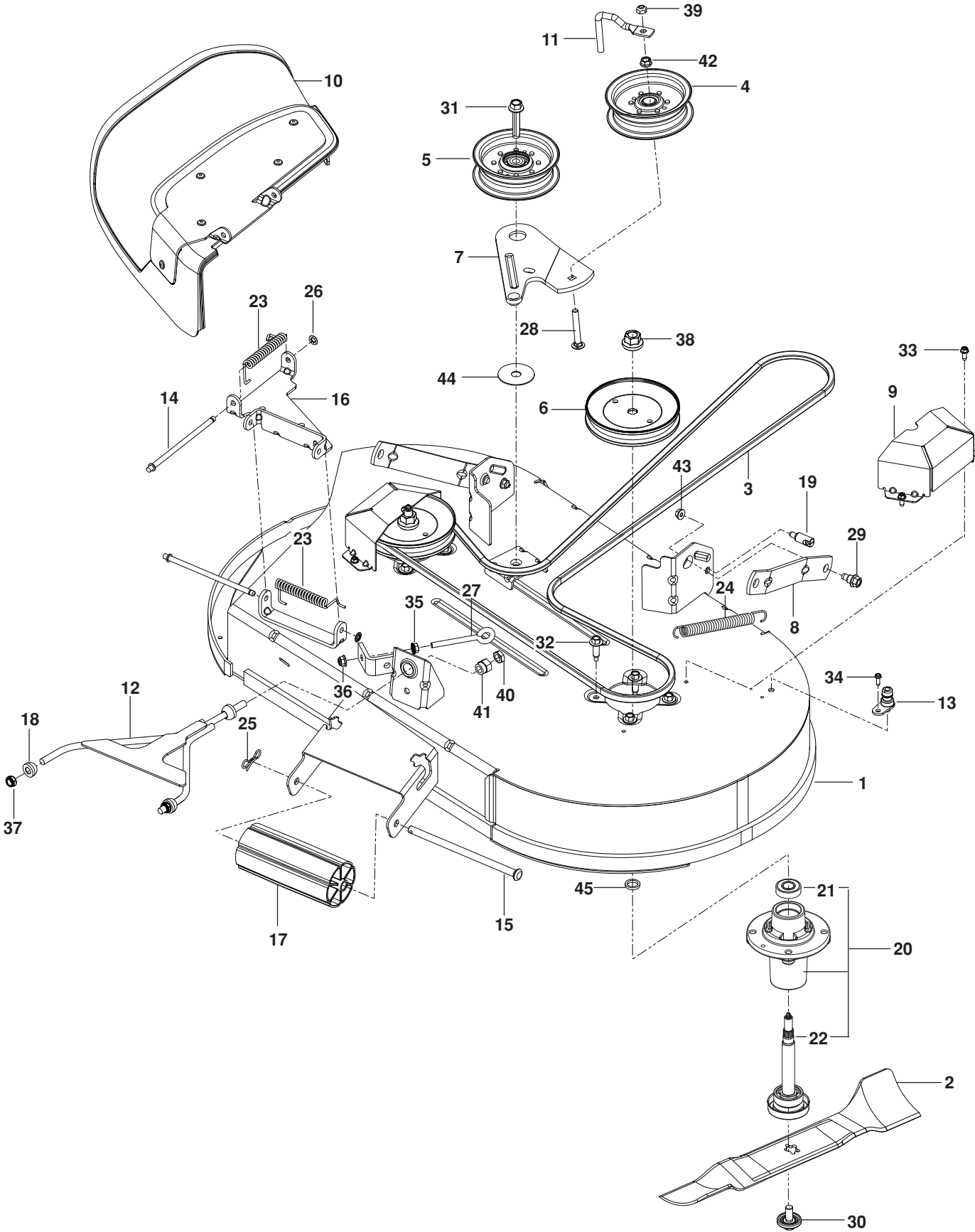
WHEELS AND TIRES



WHEELS AND TIRES

ITEM	PART NO.	QTY.	DESCRIPTION	ITEM	PART NO.	QTY.	DESCRIPTION
1..	581 19 73-01.....	2.....	ASSY, WHEEL REAR 18 x 8.5	10..	539 11 79-01.....	2.....	BUSHING, CASTER
2..	576 58 86-02.....	2.....	ASSY, CASTER TIRE 11 x 6-5	11..	539 10 25-35.....	1.....	CAP, GREASE
3..	576 58 88-02.....	2.....	YOKE, ORG	12..	576 60 15-01.....	2.....	BOLT 1/2-13 x 7 1/2 RD HD SQNK
4..	539 91 22-34.....	4.....	VALVE STEM	13..	874 95 05-16.....	2.....	BOLT 5/16-18 x 1 w/ NYLON
5..	576 58 89-01.....	2.....	SPACER	14..	873 93 08-00.....	2.....	NUT 1/2 HEX CNTRLK
6..	539 11 26-60.....	2.....	BEARING, FLANGED	15..	539 10 11-73.....	8.....	NUT 1/2 LUG
7..	539 11 56-38.....	2.....	ZERK 3/16 DRIVE	16..	539 11 56-75.....	2.....	WASHER
8..	539 11 57-49.....	2.....	PLUG, CASTER	17..	819 18 22-12.....	2.....	WASHER 1/2 FLT
9..	539 11 57-47.....	2.....	SPRING, CASTER				

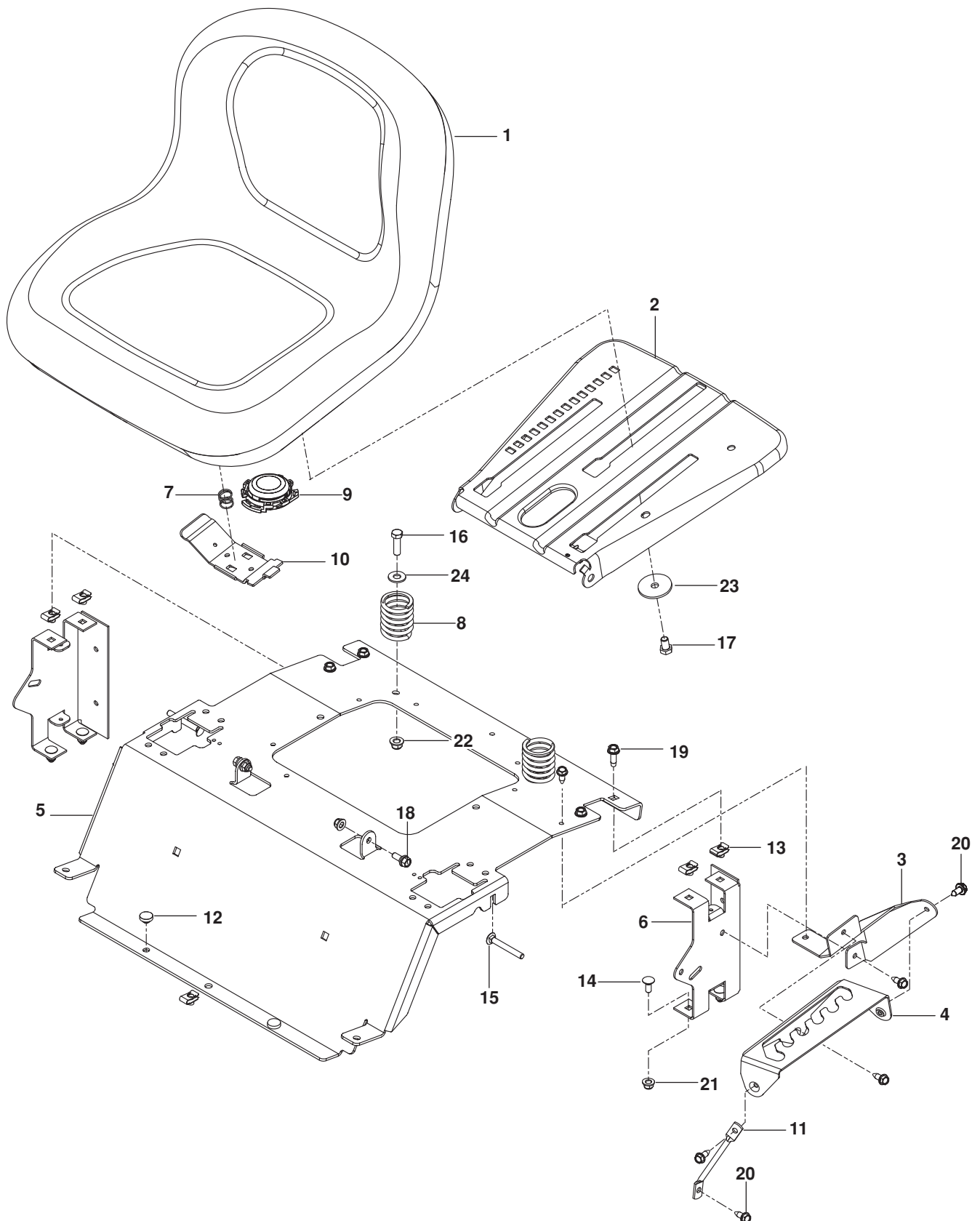
MOWER DECK / CUTTING DECK



MOWER DECK / CUTTING DECK

ITEM	PART NO.	QTY.	DESCRIPTION	ITEM	PART NO.	QTY.	DESCRIPTION
1..	586 97 94-02.....	1	DECK	24..	532 19 72-51.....	1	SPRING, DRIVE
2..	586 91 81-01.....	2	BLADE, BAGGING	25..	532 19 42-08.....	1	PIN ⁵ / ₁₆ COTTER
3..	587 27 00-01.....	1	BELT	26..	532 11 04-52.....	2	PUSHNUT
4..	532 19 61-06.....	1	PULLEY, IDLER	27..	539 11 55-74.....	1	EYEBOLT ⁵ / ₁₆ x 3½
5..	532 19 61-04.....	1	PULLEY, IDLER LH	28..	872 14 06-20.....	1	BOLT ³ / ₈ -16 x 2½ RD HD SQNK
6..	532 19 97-91.....	2	PULLEY, MANDREL	29..	532 19 65-39.....	2	BOLT, SHOULDER
7..	586 87 40-02.....	1	ARM, CLUTCH BLK	30..	532 19 30-03.....	2	BOLT/WASHER ⁷ / ₁₆ -20
8..	587 14 05-02.....	2	ARM, SUSPENSION BLK	31..	587 33 33-01.....	1	SCREW ⁷ / ₁₆ -14 x 2 HEX WSH HD
9..	586 93 68-02.....	2	COVER, BELT ORG	32..	532 17 39-84.....	8	SCREW ⁵ / ₁₆ -18 x 1 THD ROLL
10..	587 03 57-01.....	1	ASSY, DEFLECTOR	33..	532 13 77-29.....	4	SCREW ¼-20 x ⁵ / ₈ THD ROLL
11..	532 19 84-68.....	1	KEEPER, BELT	34..	532 15 29-27.....	1	SCREW #10-32 FLANGE
12..	587 25 63-02.....	1	LINK FRT	35..	539 99 05-85.....	1	NUT ⁵ / ₁₆ -18 HEX WHIZ LK
13..	532 41 55-98.....	1	PORT, WASHOUT	36..	539 11 28-99.....	1	NUT ⁵ / ₁₆ -18 HEX FLG NYLOC
14..	532 13 14-91.....	2	ROD, HINGE	37..	573 97 52-01.....	2	NUT ⁷ / ₁₆ -20 HEX NYLOC
15..	532 17 91-27.....	1	ROD, NOSE ROLLER	38..	539 10 75-90.....	2	NUT ⁹ / ₁₆ TOP CNTR LK
16..	586 91 80-02.....	1	BRACKET, HINGE ORG	39..	873 68 06-00.....	1	NUT ³ / ₈ -16 CROWN LK
17..	532 17 60-66.....	1	ROLLER, NOSE	40..	873 36 07-00.....	1	NUT ⁷ / ₁₆ -20 HEX JAM
18..	532 19 52-63.....	3	BUSHING, PIVOT	41..	532 17 59-94.....	1	NUT ⁷ / ₁₆ -20 LIFT LINK
19..	532 19 51-61.....	2	STUD w/ ANTI- ROTATE	42..	873 90 06-00.....	2	NUT ³ / ₈ -16 FLG LK
20..	539 11 21-70.....	2	MANDREL	43..	873 90 05-00.....	2	NUT ⁵ / ₁₆ -18 HEX FLG LK
21..	532 11 04-85.....	1	BEARING, BALL MANDREL	44..	532 17 85-15.....	1	WASHER FLAT HARDENED
22..	532 18 72-91.....	1	SHAFT, MANDREL	45..	532 18 76-90.....	2	WASHER, SPACER
23..	587 35 47-01.....	2	SPRING, DEFLECTOR				

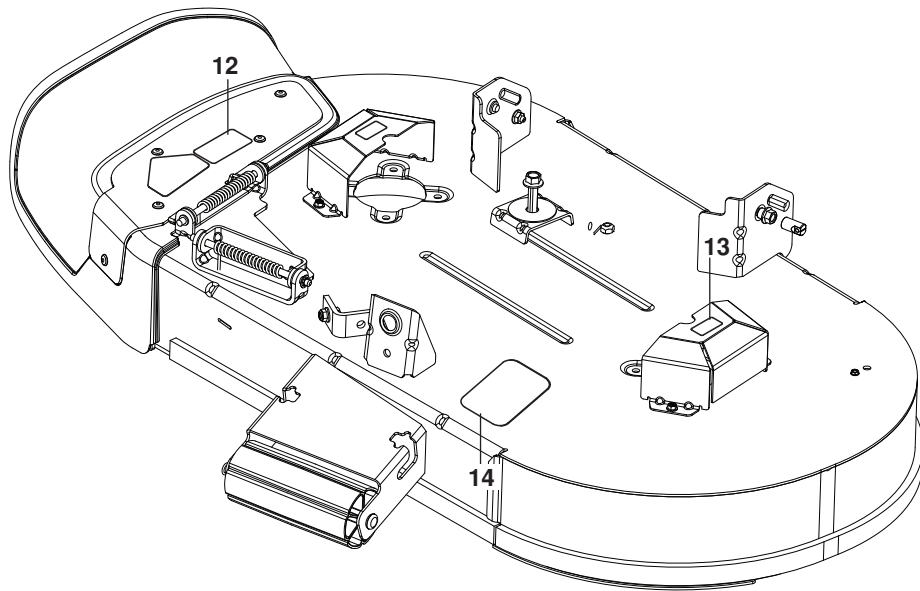
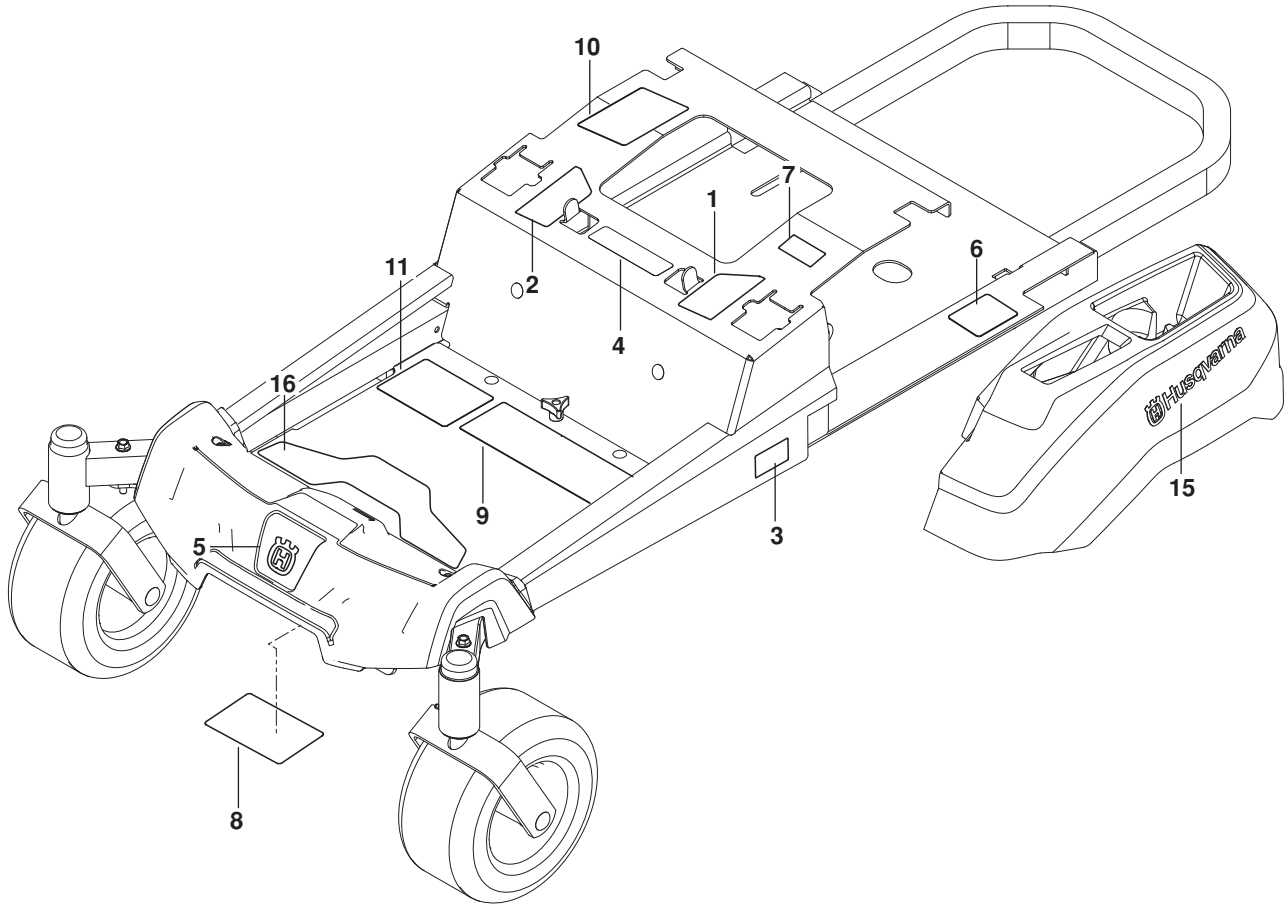
SEAT



SEAT

ITEM	PART NO.	QTY.	DESCRIPTION	ITEM	PART NO.	QTY.	DESCRIPTION
1..	532 43 98-22.....	1	SEAT	13..	539 10 47-63.....	5	RETAINER, U TYPE
2..	532 19 69-77.....	1	PAN, SEAT	14..	872 14 05-06.....	4	BOLT $\frac{5}{16}$ -18 x $\frac{3}{4}$ RD HD SQNK
3..	586 22 08-02.....	1	PLATE, LIFT SUPPORT	15..	510 42 27-01.....	2	BOLT $\frac{5}{16}$ -18 x $2\frac{1}{2}$ RD HD SQNK
4..	586 22 12-02.....	1	PLATE, DECK LIFT	16..	874 78 06-20.....	2	BOLT $\frac{3}{8}$ -16 x $1\frac{1}{4}$
5..	577 26 05-03.....	1	SUPPORT, SEAT ORG	17..	874 78 06-10.....	1	BOLT $\frac{3}{8}$ -16 x $\frac{5}{8}$
6..	580 30 82-02.....	2	SUPPORT, SEAT RR BLK	18..	539 11 03-03.....	2	BOLT $\frac{5}{16}$ -18 SHOULDER
7..	532 19 82-00.....	1	SPRING, LATCH	19..	817 49 05-12.....	4	SCREW $\frac{5}{16}$ -18 x $\frac{3}{4}$ THD FRM
8..	532 12 41-81.....	2	SPRING, SEAT	20..	817 00 05-10.....	6	SCREW $\frac{5}{16}$ -18 x $\frac{5}{8}$ WSH HD
9..	532 40 15-85.....	1	SWITCH, SEAT	21..	539 11 28-99.....	4	NUT $\frac{5}{16}$ -18 HEX FLG NYLOC
10..	532 19 76-61.....	1	HANDLE, SLIDE	22..	521 99 65-01.....	2	NUT $\frac{3}{8}$ -16 HEX FLG NYLOC
11..	586 42 86-01.....	1	LEG, SUPPORT	23..	539 11 18-97.....	1	WASHER $\frac{3}{8}$ SPECIAL
12..	585 98 93-01.....	2	GROMMET, BUMPER	24..	819 14 16-14.....	2	WASHER $\frac{3}{8}$ STD FLT

DECALS



DECALS

ITEM	PART NO.	QTY.	DESCRIPTION	ITEM	PART NO.	QTY.	DESCRIPTION
1..	587 59 56-01.....	1	DECAL, STEER / BRAKE LT	10..	532 42 38-29.....	1	DECAL, RESPONSIBILITY
2..	587 59 55-01.....	1	DECAL, STEER / BRAKE RT	11..	586 34 25-01.....	1	DECAL, START
3..	587 76 92-01.....	2	DECAL, Z 242F	12..	586 97 88-02.....	1	DECAL, DEFLECTOR
4..	539 10 57-45.....	1	DECAL, BATTERY WARNING	13..	581 72 43-01.....	2	DECAL, NO STEP
5..	532 42 86-77.....	1	DECAL, CROWN	14..	510 24 02-01.....	1	DECAL, BELT ROUTING
6..	539 10 83-85.....	1	DECAL, DO NOT TOW	15..	577 46 90-01.....	2	DECAL, HUSQVARNA
7..	539 10 83-86.....	1	DECAL, EXIT MOWER	16..	587 00 07-01.....	1	PAD, ABRASIVE
8..	539 10 98-97.....	1	DECAL, SERVICE				
9..	539 10 99-08.....	1	DECAL, SAFETY WARNINGS				

www.husqvarna.com

115 73 23-27 Rev A
2014-10-15