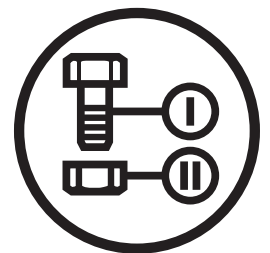




Parts Manual

Z 254i

Zero Turn Mower / 967324201-00



Please read the operator manual carefully and make sure you understand the instructions before using the machine.

When you need spare parts or support in service questions, warranty issues, etc., please consult the following professional:

This manual belongs to the machine with the manufacturing number:	Engine	Transmission

Manufacturing Number

The machine's manufacturing number can be found on the printed plate affixed to the engine compartment.

Stated on the plate, from the top are:

- The machine's type designation (I.D.).
- The manufacturer's type number (Model).
- The machine's serial number (Serial no.)

Please have the type designation and serial number available when ordering spare parts.

The engine's manufacturing number is stamped on one of the valve covers.

The plate states:

- The engine's model.
- The engine's type.
- Code

Please have these available when ordering spare parts.

The wheel motors and hydrostatic pumps have a barcode decal affixed at the rear.

Accessories Available	
Collection System.....	966 00 42 01
Mulch Kit.....	531 30 96-43

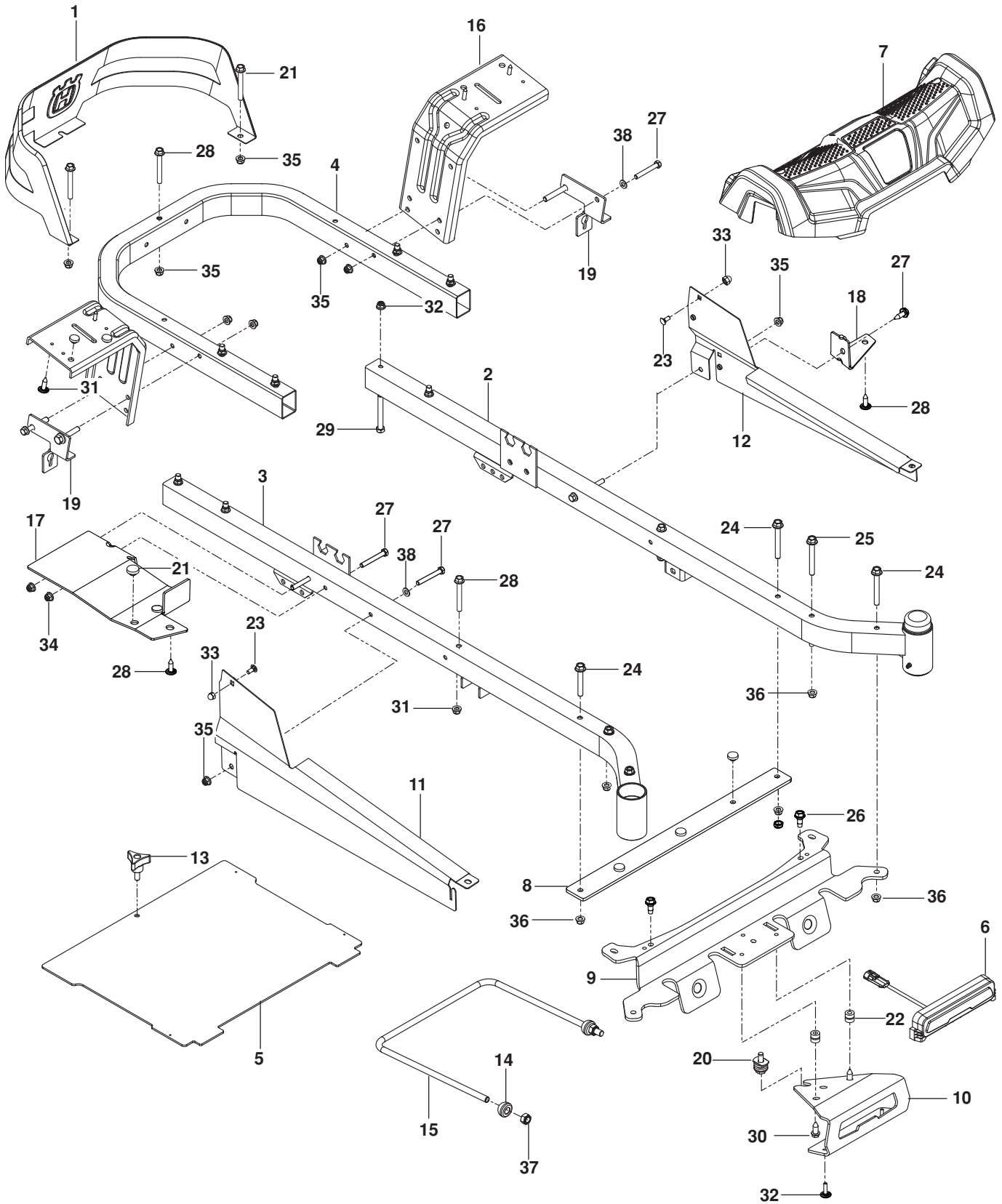
CONTENTS

FRAME.....	4
ENGINE PLATE.....	6
STEERING	8
IGNITION.....	10
BRAKE / LIFT.....	12
HYDRAULIC PUMP - MOTOR.....	14
WHEELS AND TIRES.....	16
MOWER DECK / CUTTING DECK.....	18
SEAT	20
DECALS.....	22
ACCESSORIES	
BAGGER.....	24
CHUTES, MOUNT.....	26

Illustrations may or may not represent the actual assemblies and it is not recommended to use this manual as a guide to assemble or disassemble the mower.

NOTE: All fasteners are Grade 5 unless otherwise specified.

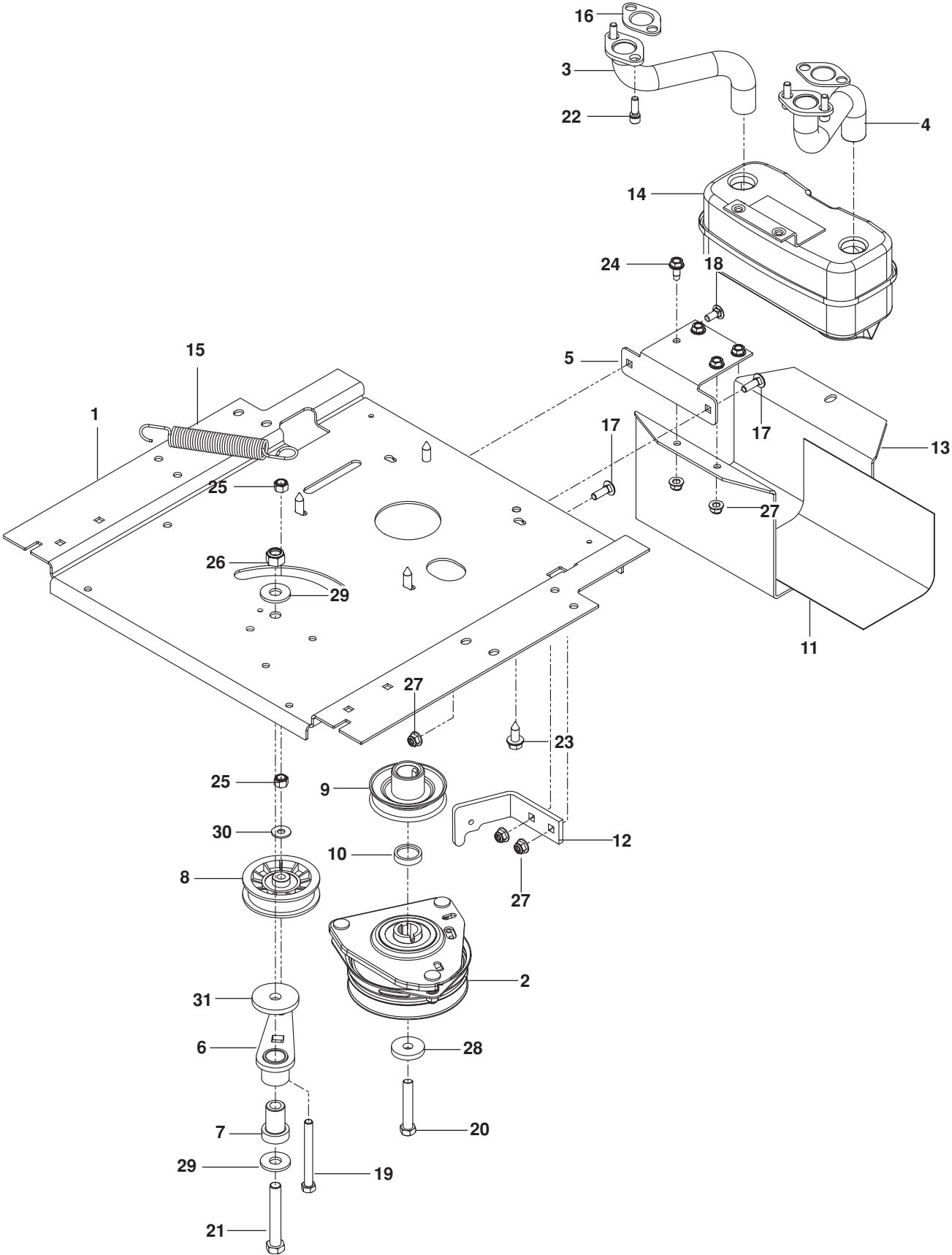
FRAME



FRAME

ITEM	PART NO.	QTY.	DESCRIPTION	ITEM	PART NO.	QTY.	DESCRIPTION
1..	585 03 98-02.....	1	GUARD, REAR BLK	20..	587 54 69-01.....	1	ASSY, ISOLATOR TAP
2..	510 17 75-03.....	1	FRAME, FRONT RT ORG	21..	585 98 93-01.....	7	GROMMET, BUMPER
3..	510 17 74-03.....	1	FRAME, FRONT LT ORG	22..	587 22 52-01.....	2	GROMMET, PUSH
4..	584 99 10-02.....	1	FRAME, REAR TUBE ORG	23..	585 94 00-01.....	2	BOLT $\frac{5}{16}$ -18 x 1 CARRIAGE
5..	522 84 29-02.....	1	FOOT PLATE w/ SAFETY DECAL	24..	577 11 77-01.....	4	BOLT $\frac{3}{8}$ -16 x 3
6..	585 91 67-01.....	1	ASSY, LED LIGHT	25..	586 65 43-01.....	2	BOLT $\frac{3}{8}$ -16 x 3 SHOULDER
7..	585 52 24-01.....	1	COVER, FOOTREST	26..	586 88 11-01.....	2	BOLT $\frac{5}{16}$ -18 SHOULDER
8..	585 52 30-04.....	1	SUPPORT, FOOTREST	27..	874 78 05-36.....	8	BOLT $\frac{5}{16}$ -18 x 2 $\frac{1}{4}$
9..	585 52 31-04.....	1	CROSS MEMBER	28..	874 78 05-44.....	5	BOLT $\frac{5}{16}$ -18 x 2 $\frac{3}{4}$
10..	587 45 86-02.....	1	BRACKET, SKID	29..	874 78 06-48.....	8	BOLT $\frac{3}{8}$ -16 x 3
11..	585 33 16-02.....	1	COVER, RAIL RT	30..	817 58 52-00.....	2	SCREW $\frac{5}{16}$ -18 x 1 $\frac{1}{4}$ WSH HD
12..	585 33 15-02.....	1	COVER, RAIL LT	31..	532 41 63-58.....	6	SCREW #10-24 x $\frac{3}{4}$ HEX HD
13..	539 10 44-11.....	1	KNOB w/ STUD	32..	532 42 17-56.....	2	SCREW #10 x $\frac{1}{2}$
14..	532 19 52-63.....	2	BUSHING, PIVOT	33..	585 93 81-01.....	2	NUT $\frac{5}{16}$ -18 ACORN
15..	521 93 81-01.....	1	LINK, FRONT SUSPENSION	34..	873 90 05-00.....	2	NUT $\frac{5}{16}$ -18 HEX FLG LCK
16..	580 50 13-02.....	2	SUPPORT, FENDER BLK	35..	539 11 28-99.....	9	NUT $\frac{5}{16}$ -18 HEX FLG NYLOC
17..	585 52 34-04.....	1	SUPPORT, CONSOLE RT	36..	521 99 65-01.....	8	NUT $\frac{3}{8}$ -16 HEX FLG NYLOC
18..	585 52 36-04.....	1	SUPPORT, CONSOLE LT	37..	539 11 91-24.....	2	NUT $\frac{7}{16}$ -14 HEX NYLOC
19..	585 47 43-02.....	2	BRACKET, BYPASS ROD	38..	819 11 11-16.....	6	WASHER $\frac{5}{16}$ SAE FLT

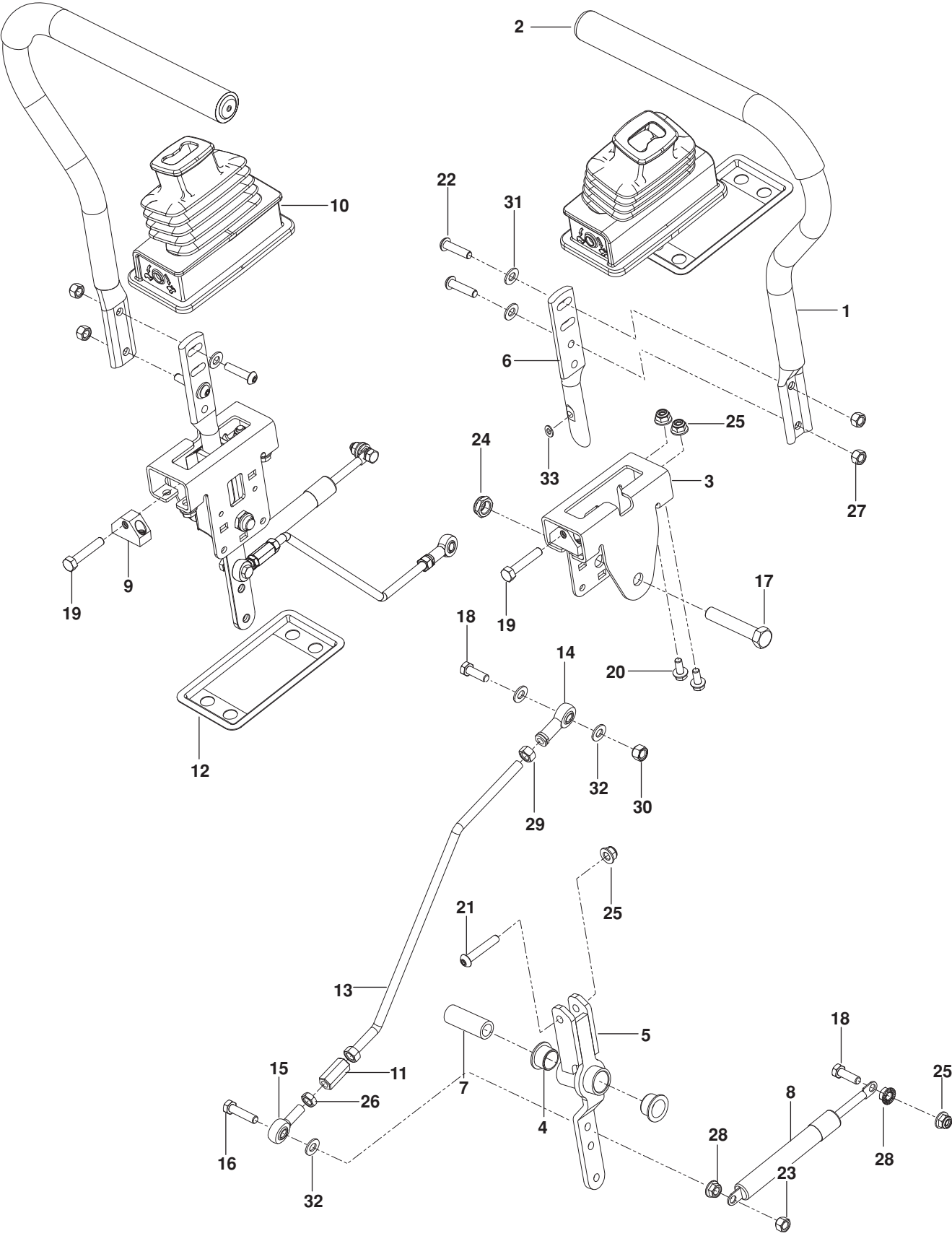
ENGINE PLATE



ENGINE PLATE

ITEM	PART NO.	QTY.	DESCRIPTION	ITEM	PART NO.	QTY.	DESCRIPTION
1..	587 48 07-02.....	1	PLATE, ENGINE BLK	20..	581 33 28-03.....	1	BOLT ⁷ / ₁₆ -20 x 2½ HEX HD
2..	532 40 00-08.....	1	CLUTCH	21..	874 78 08-52.....	1	BOLT ½-13 x 3¼ HEX HD
3..	581 88 11-01.....	1	TUBE, EXHAUST RT	22..	532 18 39-06.....	4	SCREW, SCKT HD
4..	581 88 10-01.....	1	TUBE, EXHAUST LT	23..	817 12 06-16.....	4	SCREW ³ / ₈ -16 x 1 THD FRM
5..	581 88 67-02.....	1	BRACKET, MUFFLER BLK	24..	817 49 05-12.....	4	SCREW ⁵ / ₁₆ -18 x ¾ THD FRM
6..	532 44 81-45.....	1	ARM, IDLER	25..	539 97 69-79.....	2	NUT ³ / ₈ -16 HEX NYLOC
7..	539 10 12-31.....	1	SPINDLE, IDLER	26..	873 80 08-00.....	1	NUT ½-13 HEX NYLOC
8..	539 11 03-11.....	1	PULLEY, IDLER	27..	539 11 28-99.....	5	NUT ⁵ / ₁₆ -18 HEX FLG NYLOC
9..	539 11 45-30.....	1	PULLEY, ENGINE	28..	532 12 61-97.....	1	WASHER, CLUTCH
10..	577 09 46-01.....	1	SPACER	29..	819 18 22-12.....	2	WASHER ½ FLT
11..	539 13 28-59.....	1	SHIELD, HEAT	30..	819 12 14-14.....	2	WASHER ⁵ / ₁₆ STD FLT
12..	522 44 25-06.....	1	STOP, CLUTCH BLK	31..	539 11 26-70.....	1	WASHER, HEAVY
13..	587 45 12-02.....	1	GUARD, MUFFLER BLK	NOT SHOWN			
14..	539 13 16-04.....	1	MUFFLER ASSY		525 34 98-01	1	GUARD, SCREEN
15..	532 19 61-05.....	1	SPRING, DECK DRIVE		579 07 39-01	4	SCREW, GUARD
16..	532 16 53-91.....	2	GASKET, MUFFLER		-----	1	ENGINE, BRIGGS & STRATTON 44S877 24 HP
17..	872 14 05-08.....	2	BOLT ⁵ / ₁₆ -18 x 1 RD HD SQNK				For engine service and replacement parts, see a B&S dealer
18..	872 14 05-06.....	1	BOLT ⁵ / ₁₆ -18 x ¾ RD HD SQNK				
19..	874 52 06-56.....	1	BOLT ³ / ₈ -16 x 3½ HEX HD				

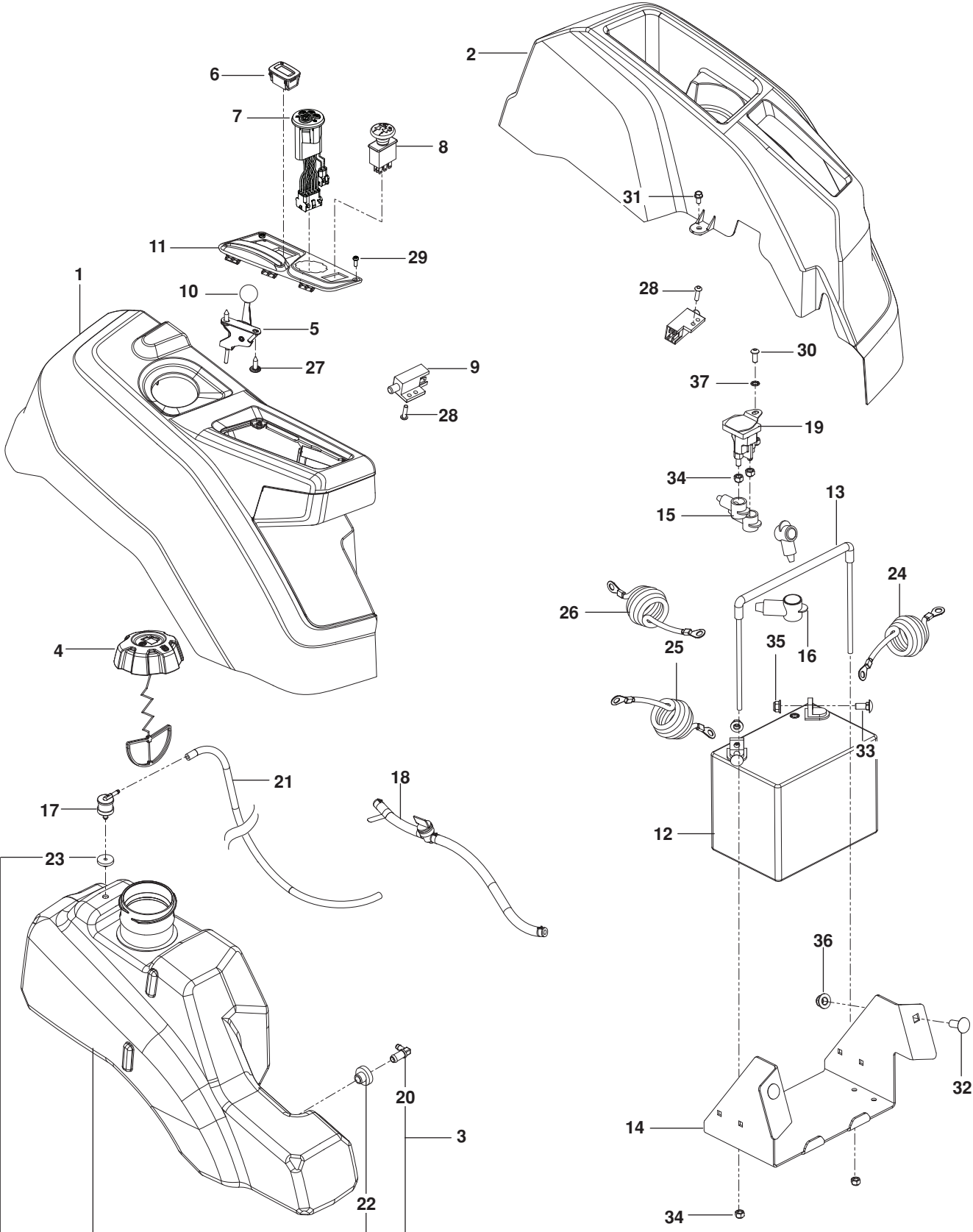
STEERING



STEERING

ITEM	PART NO.	QTY.	DESCRIPTION	ITEM	PART NO.	QTY.	DESCRIPTION
1..	581 82 67-01.....	2.....	LEVER w/ GRIP	18..	874 78 05-16.....	4.....	BOLT $\frac{5}{16}$ -18 x 1 THD FRM
2..	525 39 29-01.....	2.....	GRIP, FOAM	19..	585 98 61-01.....	2.....	BOLT $\frac{5}{16}$ -18 x 1 $\frac{1}{4}$
3..	585 12 47-02.....	2.....	BRACKET, CONTROL	20..	874 49 05-12.....	8.....	BOLT HEX FLG $\frac{5}{16}$ -18 X $\frac{3}{4}$
4..	539 13 15-18.....	4.....	BEARING, FLANGED	21..	576 85 04-02.....	2.....	SCREW $\frac{5}{16}$ -18 X 1 $\frac{3}{4}$ BTN HD
5..	576 14 03-01.....	2.....	LEVER, CONTROL	22..	585 98 59-01.....	4.....	SCREW $\frac{5}{16}$ -18 X 1 $\frac{1}{4}$ BTN BLK
6..	587 60 17-02.....	2.....	LEVER, HANDLE	23..	873 80 05-00.....	2.....	NUT $\frac{5}{16}$ -18 HEX NYLOC
7..	584 92 72-01.....	2.....	SPACER, PIVOT CONTROL	24..	539 10 80-10.....	2.....	NUT $\frac{1}{2}$ -13 HEX JAM NYL GR2
8..	539 10 27-20.....	2.....	DAMPENER	25..	539 11 28-99.....	12.....	NUT $\frac{5}{16}$ -18 HEX FLG NYLOC
9..	581 43 75-01.....	2.....	BLOCK, TRACKING	26..	873 70 05-00.....	2.....	NUT $\frac{5}{16}$ -24 HEX JAM LH
10..	585 83 16-01.....	2.....	BOOT, STEERING	27..	585 98 60-01.....	4.....	NUT $\frac{5}{16}$ -18 HEX NYLOC BLK
11..	539 11 66-89.....	2.....	COUPLER, ROD END	28..	539 99 05-85.....	4.....	NUT $\frac{5}{16}$ -18 HEX WHIZLK
12..	585 48 82-02.....	2.....	FLANGE, BOOT	29..	539 99 02-23.....	4.....	NUT $\frac{5}{16}$ -24 HEX
13..	580 62 42-01.....	2.....	ROD, MOTION CONTROL	30..	539 11 56-17.....	2.....	NUT $\frac{5}{16}$ -18 THIN NYLOC
14..	539 11 57-29.....	2.....	ROD END RH	31..	586 30 91-01.....	4.....	WASHER $\frac{5}{16}$ SAE FLT BLK
15..	539 11 66-90.....	2.....	ROD END MALE LH	32..	819 11 11-16.....	6.....	WASHER $\frac{5}{16}$ SAE FLT
16..	874 78 05-28.....	2.....	BOLT $\frac{5}{16}$ -18 x 1 $\frac{3}{4}$ TPBLT	33..	587 61 42-01.....	2.....	WASHER $\frac{11}{32}$
17..	874 78 08-44.....	2.....	BOLT $\frac{1}{2}$ -13 x 2 $\frac{3}{4}$				

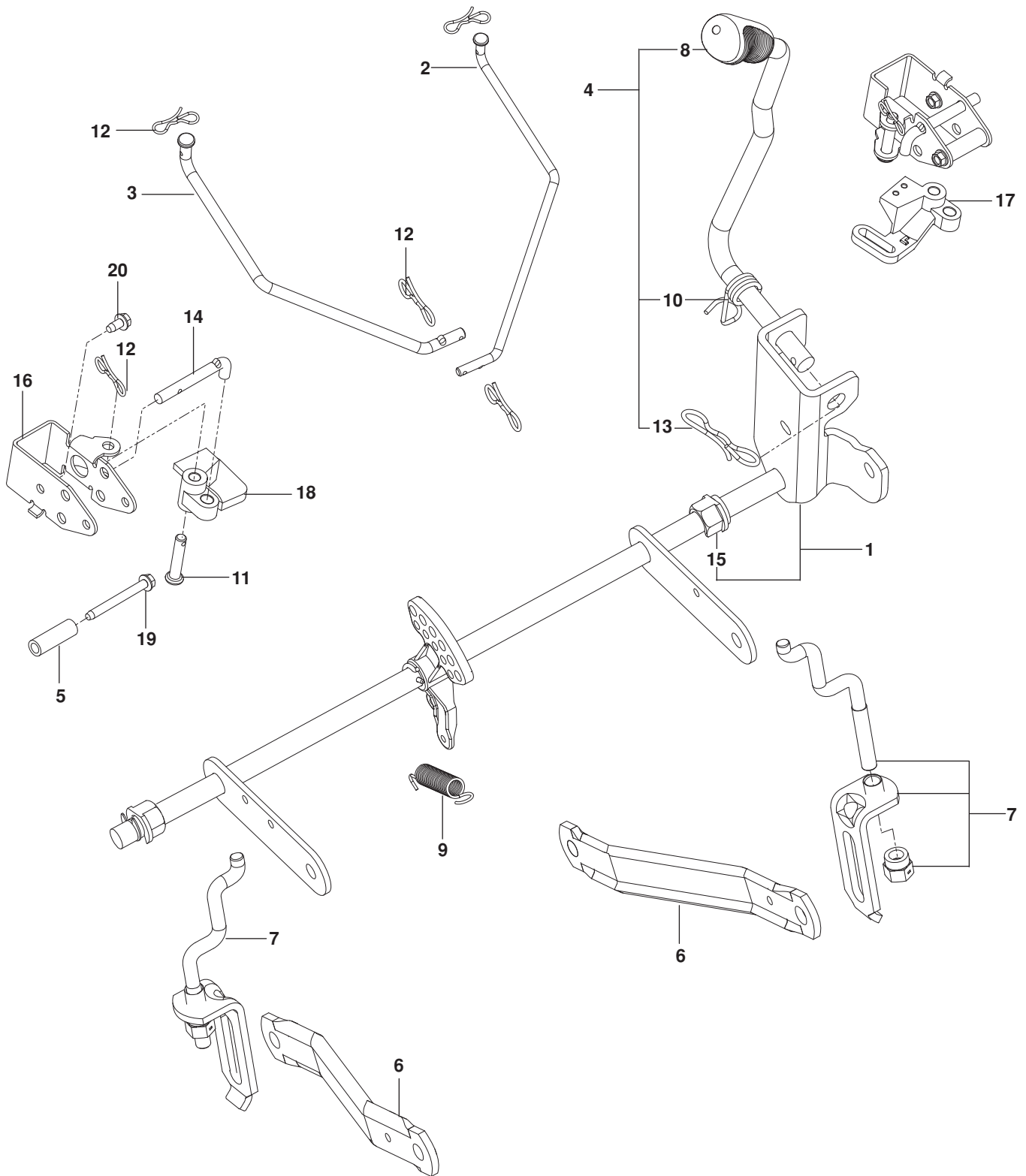
IGNITION



IGNITION

ITEM	PART NO.	QTY.	DESCRIPTION	ITEM	PART NO.	QTY.	DESCRIPTION
1..	585 52 28-01.....	1	ASSY, FENDER, RT GRY	21..	587 04 45-23.....	1	HOSE 3/16 x 23" PURGE
2..	586 62 12-01.....	1	FENDER, LT GRY	22..	532 00 36-45.....	1	GROMMET, RUBBER
3..	578 18 06-02.....	1	ASSY, FUEL TANK	23..	532 43 74-92.....	1	GROMMET, CHECK VALVE
4..	585 12 48-01.....	1	CAP, FUEL w/ TETHER	24..	586 10 82-01.....	1	CABLE, BATTERY POSITIVE
5..	585 97 49-02.....	1	CABLE, THROTTLE	25..	585 30 69-04.....	1	CABLE, BATTERY NEGATIVE
6..	586 16 18-01.....	1	METER, SERVICE	26..	585 73 43-03.....	1	CABLE, BATTERY POSITIVE
7..	586 83 67-04.....	1	SWITCH, IGNITION	27..	532 14 18-41.....	2	SCREW 10-16 x .65
8..	532 17 46-52.....	1	SWITCH, PTO	28..	586 93 60-01.....	2	SCREW #10-24 x 1/2 SKT HD
9..	532 10 95-53.....	2	SWITCH, INTERLOCK	29..	545 22 71-01.....	2	SCREW 6-19 x 7/16 PAN HD
10..	539 13 30-49.....	1	KNOB	30..	539 11 12-29.....	1	SCREW 1/4-20 x 5/8 BTN SKT
11..	585 52 27-03.....	1	PANEL, CONTROL	31..	817 49 04-08.....	2	SCREW 1/4-20 x 1/2
12..	539 10 24-36.....	1	BATTERY	32..	539 99 06-45.....	2	BOLT 3/8-16 x 1 RDHD SQNK
13..	539 13 12-09.....	1	TIE DOWN, BATTERY	33..	872 14 05-06.....	2	BOLT 5/16-18 x 3/4 RDHD SQNK
14..	585 04 87-02.....	1	BOX, BATTERY BLK	34..	873 80 04-00.....	5	NUT 1/4-20 HEX NYLOC
15..	532 13 15-63.....	3	TERMINAL COVER	35..	539 11 28-99.....	2	NUT 5/16-18 FLG NYLOC
16..	539 10 27-59.....	1	INSULATOR	36..	521 99 65-01.....	2	NUT 3/8-16 HEX FLG NYLOC
17..	576 61 81-01.....	1	VALVE, FUEL CHECK	37..	539 99 00-53.....	1	WASHER 1/4 ITLW
18..	586 12 39-04.....	1	ASSY, FUEL LINE w/ VALVE	NOT SHOWN			
19..	532 19 25-07.....	1	SOLENOID		587 23 21-02	1	HARNESS, WIRING
20..	532 13 92-77.....	1	ELBOW		586 54 81-01	1	HARNESS, LED LIGHT

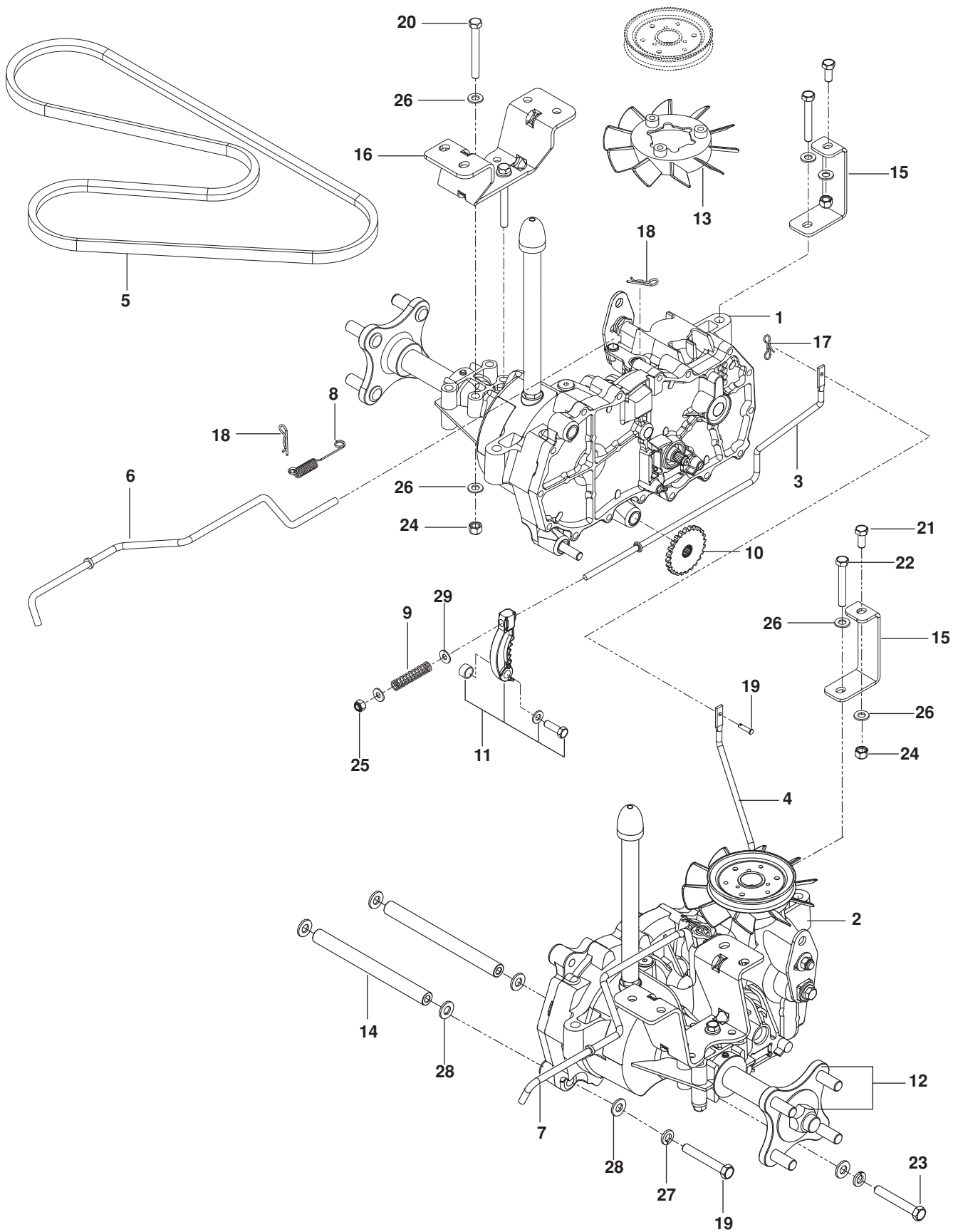
BRAKE / LIFT



BRAKE / LIFT

ITEM	PART NO.	QTY.	DESCRIPTION	ITEM	PART NO.	QTY.	DESCRIPTION
1..	587 62 31-01.....	1	ASSY, SHAFT w/ NUTS, E-RINGS	11..	585 70 14-01.....	2	PIN ½ CLEVIS
2..	586 45 71-01.....	1	LINK, BRAKE LT	12..	587 22 53-01.....	6	CLIP
3..	586 45 72-01.....	1	LINK, BRAKE RT	13..	532 19 42-09.....	1	CLIP
4..	587 62 29-01.....	1	ASSY, LIFT HANDLE	14..	585 68 20-01.....	2	PUSHROD
5..	580 48 61-01.....	2	SPACER	15..	510 18 49-01.....	2	NUT, PLASTIC
6..	532 19 51-85.....	2	ARM, SUSPENSION RR	16..	585 68 21-01.....	2	BRACKET, BELLCRANK
7..	587 62 30-01.....	2	ASSY, CENTERING LNK	17..	586 45 74-01.....	1	BELLCRANK LT
8..	532 44 50-60.....	1	GRIP, HANDLE	18..	586 45 75-01.....	1	BELLCRANK RT
9..	586 86 76-01.....	1	SPRING	19..	586 56 13-01.....	2	SCREW ¼-20 x 2¼ THD ROLL
10..	532 19 63-14.....	1	SPRING	20..	532 13 77-29.....	2	SCREW ¼-20 x 5/8 THD ROLL

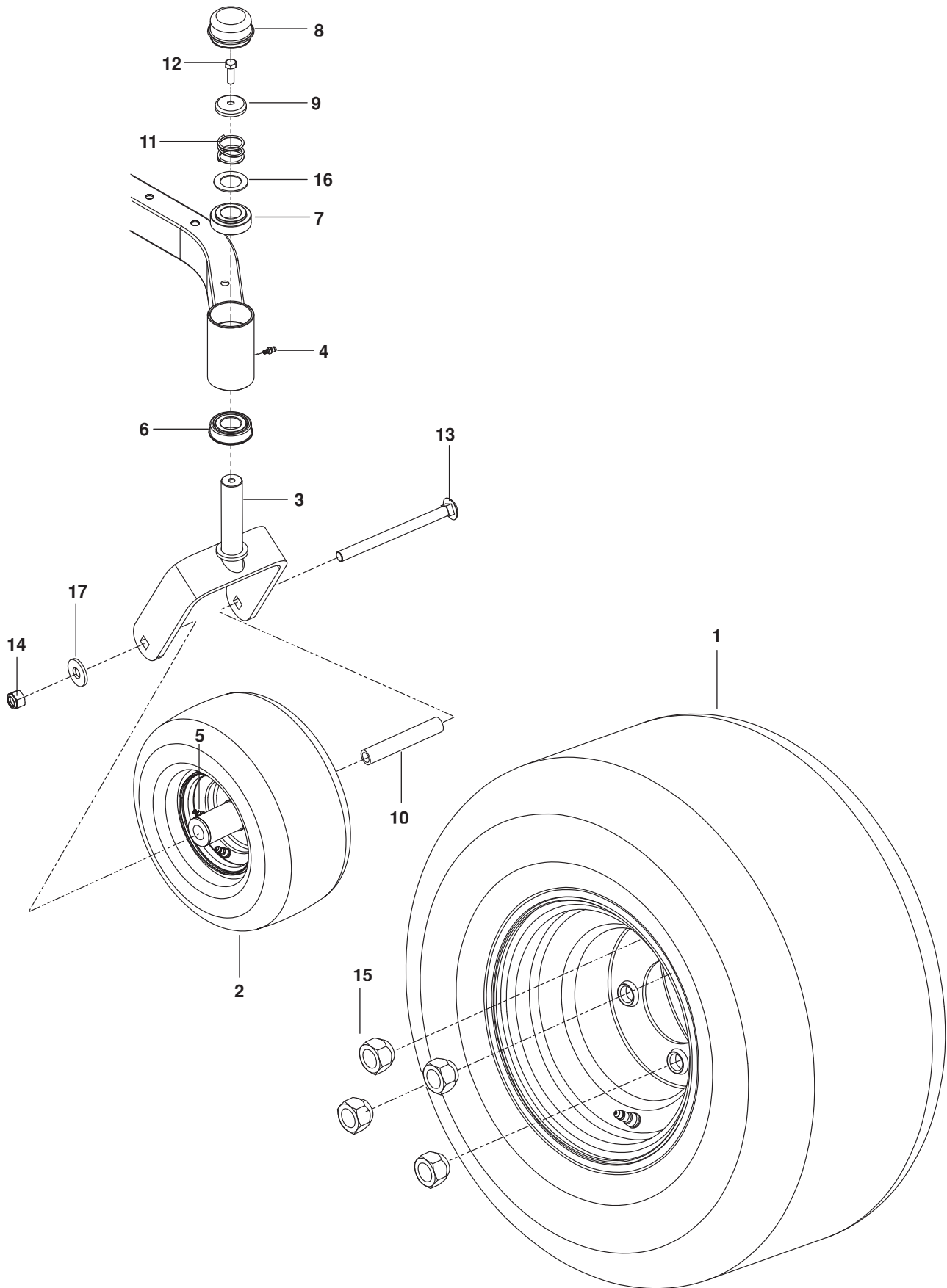
HYDRAULIC PUMP - MOTOR



HYDRAULIC PUMP-MOTOR

ITEM	PART NO.	QTY.	DESCRIPTION	ITEM	PART NO.	QTY.	DESCRIPTION
1..	510 37 56-01.....	1	EZT, LT	16..	580 80 66-02.....	2	MOUNT, EZT RR BLK
2..	510 37 56-02.....	1	EZT, RT	17..	587 22 53-01.....	1	CLIP
3..	574 03 05-01.....	1	ROD, EZT BRAKE LT	18..	539 97 69-88.....	4	CLIP
4..	574 03 05-02.....	1	ROD, EZT BRAKE RT	19..	587 11 53-01.....	1	PIN, CLEVIS
5..	539 11 04-11.....	1	BELT, EZT	20..	874 78 05-44.....	4	BOLT ⁵ / ₁₆ -18 x 2 ³ / ₄
6..	585 47 44-01.....	1	ROD, BYPASS LT	21..	874 78 05-12.....	2	BOLT ⁵ / ₁₆ -18 x ³ / ₄
7..	585 47 45-01.....	1	ROD, BYPASS RT	22..	874 78 05-36.....	2	BOLT ⁵ / ₁₆ -18 x 2 ¹ / ₄
8..	586 66 51-01.....	2	SPRING, BYPASS	23..	874 78 06-40.....	4	BOLT ³ / ₈ -16 x 2 ¹ / ₂
9..	539 11 03-42.....	2	SPRING, BRAKE ROD	24..	873 80 05-00.....	8	NUT ⁵ / ₁₆ -18 HEX NYLOC
10..	539 12 00-80.....	2	COG, BRAKE DISC	25..	873 80 04-00.....	2	NUT ¹ / ₄ -20 HEX NYLOC
11..	539 12 00-79.....	2	ASSY, BRAKE ARM	26..	819 11 11-16.....	16	WASHER ⁵ / ₁₆ SAE FLT
12..	575 50 70-01.....	1	ASSY, HUB w/ NUTS	27..	810 03 06-00.....	4	WASHER ³ / ₈ SPLT LCK
13..	539 12 07-85.....	2	BLADE, FAN	28..	819 13 13-16.....	8	WASHER ³ / ₈ SAE FLT
14..	510 18 41-04.....	2	SPACER TUBE	29..	819 09 10-16.....	4	WASHER ¹ / ₄ SAE FLT
15..	580 80 65-02.....	2	SUPPORT, EZT FRT				

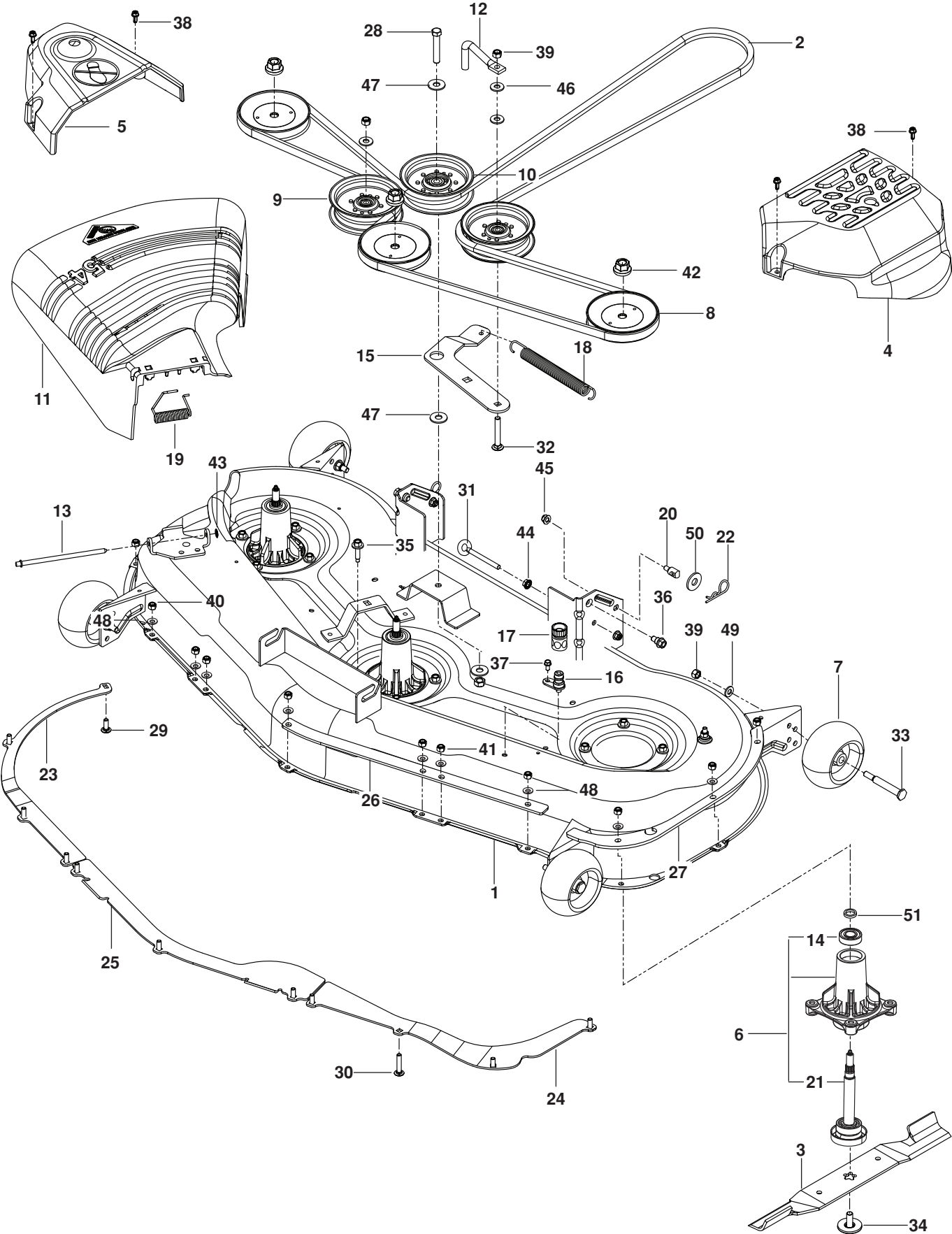
WHEELS AND TIRES



WHEELS AND TIRES

ITEM	PART NO.	QTY.	DESCRIPTION	ITEM	PART NO.	QTY.	DESCRIPTION
1..	579 75 34-01.....	2.....	ASSY, WHEEL REAR 18 x 9.5	10..	576 58 89-01.....	2.....	SPACER, PIVOT
2..	576 58 86-02.....	2.....	WHEEL ASSY CASTER 11x6.5	11..	539 11 57-47.....	2.....	SPRING, CASTER
3..	576 58 88-01.....	2.....	YOKE ORG	12..	874 95 05-16.....	2.....	BOLT, HEX ⁵ / ₁₆ -18 x 1 NYLOC
4..	539 11 56-38.....	2.....	ZERK ³ / ₁₆ DRIVE	13..	576 60 15-01.....	2.....	BOLT ¹ / ₂ -13 x 7 RDHD SQNK
5..	539 10 33-00.....	2.....	ZERK	14..	873 93 08-00.....	2.....	NUT ¹ / ₂ -13 HEX CNTRLK
6..	539 11 26-60.....	2.....	BEARING, FLANGED	15..	539 10 11-73.....	8.....	NUT ¹ / ₂ LUG
7..	539 11 79-01.....	2.....	BUSHING, CASTER	16..	539 11 56-75.....	2.....	WASHER
8..	539 10 25-35.....	2.....	GREASE CAP	17..	819 18 22-12.....	2.....	WASHER ⁹ / ₁₆
9..	539 11 57-49.....	2.....	PLUG, CASTER				

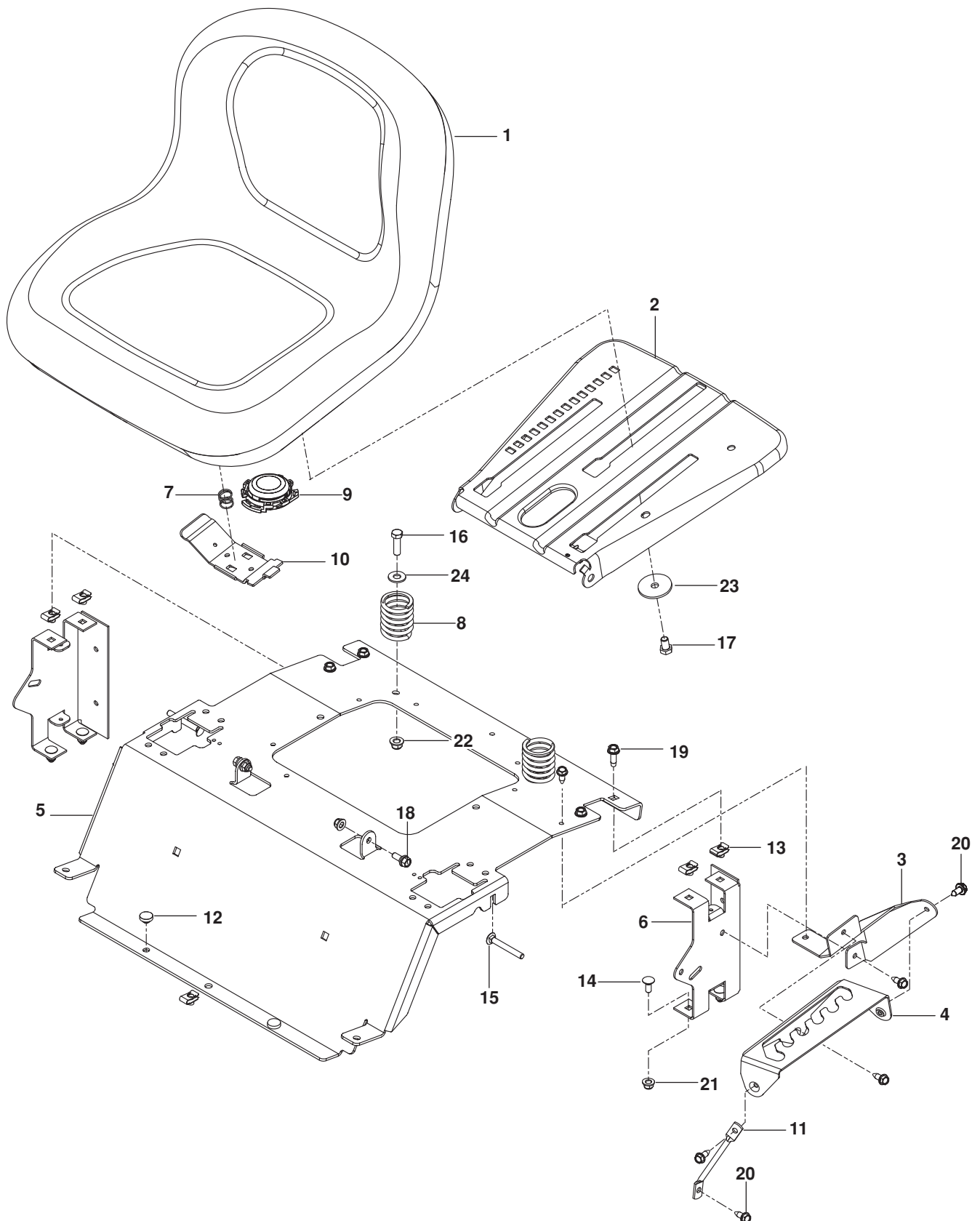
MOWER DECK / CUTTING DECK



MOWER DECK / CUTTING DECK

ITEM	PART NO.	QTY.	DESCRIPTION	ITEM	PART NO.	QTY.	DESCRIPTION
1..	522 52 70-02.....	1	DECK, ORG	27..	585 32 28-05.....	1	PLATE, SIDE
2..	539 11 45-57.....	1	V-BELT	28..	874 78 07-40.....	1	BOLT 7/16-14 x 2 1/2 HEX HD
3..	532 18 72-56.....	3	BLADE, BAGGING	29..	872 11 05-08.....	5	BOLT 5/16-18 x 1 RDHD SQNK
4..	532 18 72-97.....	1	BELT SHIELD, LT	30..	872 11 05-10.....	7	BOLT 5/16-18 x 1 1/4 RDHD SQNK
5..	532 18 81-87.....	1	BELT SHIELD, RT	31..	539 11 55-74.....	1	EYE BOLT 5/16 x 3 1/2
6..	532 18 72-92.....	3	HOUSING ASSY, CUTTER	32..	539 12 81-01.....	1	BOLT 3/8-16 x 2 1/4 CARRIAGE
7..	532 13 39-57.....	4	WHEEL, GAUGE	33..	532 19 34-06.....	4	BOLT 3/8-16 x 3 5/8 SHOULDER
8..	532 17 34-36.....	3	PULLEY	34..	532 19 30-03.....	3	BOLT WASHER ASSY
9..	532 19 61-06.....	2	PULLEY, IDLER	35..	584 95 39-01.....	12	BOLT 5/16-18 x WSHR HD
10..	532 19 61-04.....	1	PULLEY, IDLER	36..	532 19 65-39.....	2	BOLT, SHOULDER
11..	532 18 72-57.....	1	DEFLECTOR	37..	817 49 04-08.....	1	SCREW 1/4-20 x 1 1/2 HWST
12..	522 62 97-01.....	1	KEEPER, BELT	38..	532 13 77-29.....	4	SCREW 1/4-20 x 5/8 THDROLL
13..	532 13 14-91.....	1	ROD, HINGE	39..	873 90 06-00.....	6	NUT 3/8-16 HEX NYLOC
14..	532 10 04-85.....	1	BEARING	40..	873 80 05-00.....	5	NUT 5/16-18 HEX NYLOC
15..	510 22 00-02.....	1	ARM, IDLER	41..	873 68 05-00.....	7	NUT 5/16-18 CROWN LK
16..	532 41 55-98.....	1	PORT, WASHOUT	42..	532 40 02-34.....	3	NUT 9/16 TOP CNTRLK
17..	532 41 64-05.....	1	COUPLING, QUICK CONN	43..	532 11 04-52.....	1	PUSHNUT
18..	539 12 09-20.....	1	SPRING, DECK BELT	44..	539 99 05-85.....	1	NUT 5/16-18 HEX WHIZLK
19..	532 17 81-02.....	1	SPRING, TORSION	45..	539 11 28-99.....	3	NUT 5/16-18 FLG NYLOC
20..	532 19 51-61.....	2	STUD, w/ ANTI-ROTATE	46..	819 14 16-14.....	3	WASHER 3/8 FLAT STD
21..	532 18 72-91.....	1	SHAFT	47..	539 10 48-64.....	3	WASHER 7/16 FLAT
22..	539 97 69-89.....	2	HAIRPIN #4	48..	819 11 11-16.....	12	WASHER 5/16 SAE FLAT
23..	532 18 73-42.....	1	BAFFLE, RT	49..	819 13 13-16.....	4	WASHER 16 GAUGE
24..	532 18 73-44.....	1	BAFFLE, LT	50..	819 21 21-13.....	2	WASHER 1/2 FLAT
25..	532 18 76-07.....	1	BAFFLE, CNTR	51..	532 18 76-90.....	3	WASHER/SPACER
26..	585 32 26-05.....	1	PLATE, FRONT				

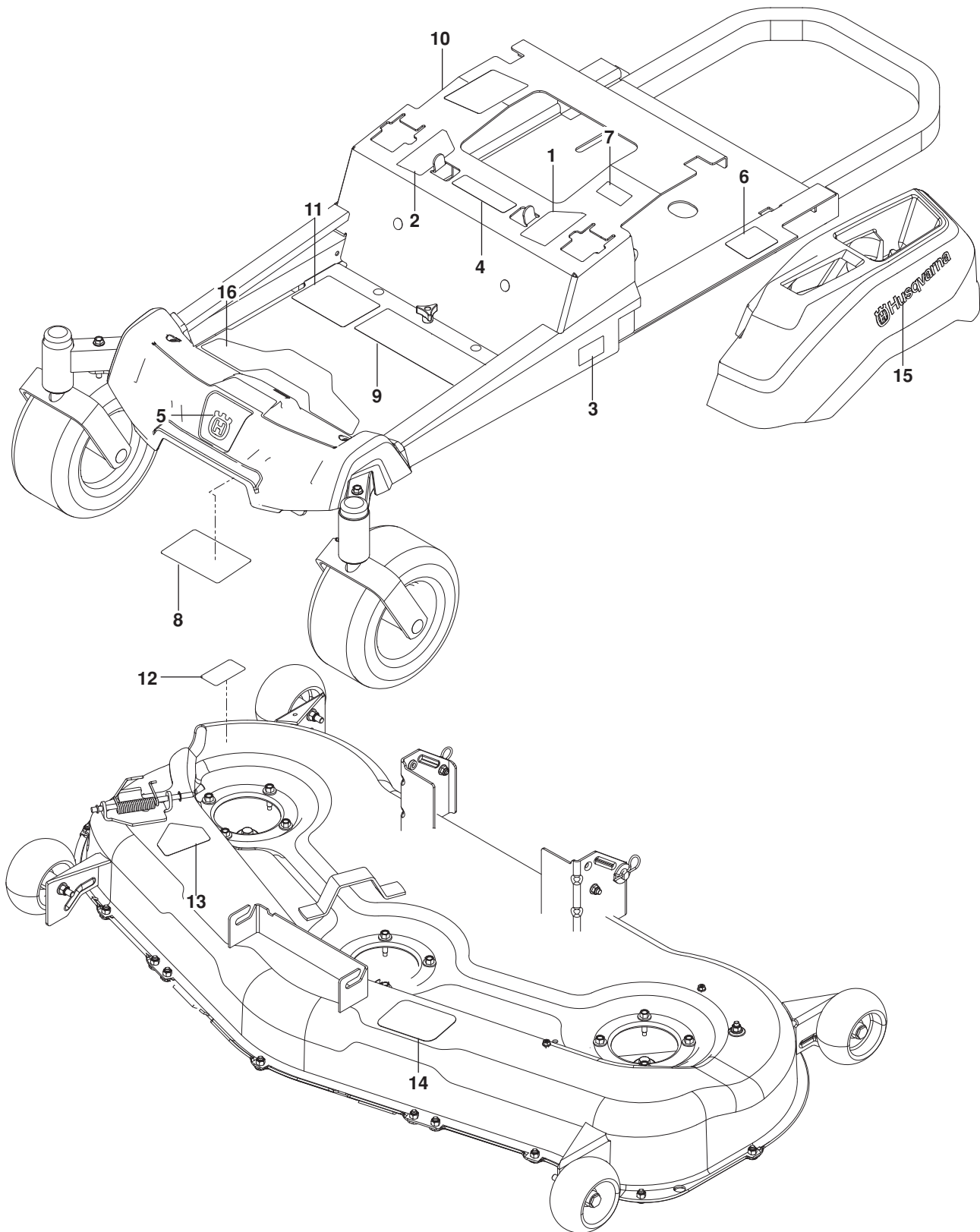
SEAT



SEAT

ITEM	PART NO.	QTY.	DESCRIPTION	ITEM	PART NO.	QTY.	DESCRIPTION
1..	532 43 98-22.....	1	SEAT	13..	539 10 47-63.....	5	RETAINER, U TYPE
2..	532 19 69-77.....	1	PAN, SEAT	14..	872 14 05-06.....	4	BOLT $\frac{5}{16}$ -18 x $\frac{3}{4}$ RDHD SQNK
3..	586 22 08-02.....	1	PLATE, LIFT SUPPORT	15..	510 42 27-01.....	2	BOLT $\frac{5}{16}$ -18 x $2\frac{1}{2}$ RDHD SQNK
4..	586 22 12-02.....	1	PLATE, DECK LIFT	16..	874 78 06-20.....	2	BOLT $\frac{3}{8}$ -16 x $1\frac{1}{4}$
5..	577 26 05-03	1	SUPPORT, SEAT ORG	17..	874 78 06-10.....	1	BOLT $\frac{3}{8}$ -16 x $\frac{5}{8}$
6..	580 30 82-02.....	2	SUPPORT, SEAT RR BLK	18..	539 11 03-03.....	2	BOLT $\frac{5}{16}$ -18 SHOULDER
7..	581 42 93-02.....	1	SPRING, LATCH	19..	817 49 05-12.....	4	SCREW $\frac{5}{16}$ -18 x $\frac{3}{4}$ THD FRM
8..	532 12 41-81.....	2	SPRING, SEAT	20..	817 00 05-10.....	6	SCREW $\frac{5}{16}$ -18 x $\frac{5}{8}$ WSH HD
9..	532 40 15-85.....	1	SWITCH, SEAT	21..	539 11 28-99.....	4	NUT $\frac{5}{16}$ -18 HEX FLG NYLOC
10..	532 19 76-61.....	1	HANDLE, SLIDE	22..	521 99 65-01.....	2	NUT $\frac{3}{8}$ -16 HEX FLG NYLOC
11..	586 42 86-01.....	1	LEG, SUPPORT	23..	539 11 18-97.....	1	WASHER $\frac{3}{8}$ SPECIAL
12..	585 98 93-01.....	2	GROMMET, BUMPER	24..	819 14 16-14.....	2	WASHER $\frac{3}{8}$ STD FLT

DECALS

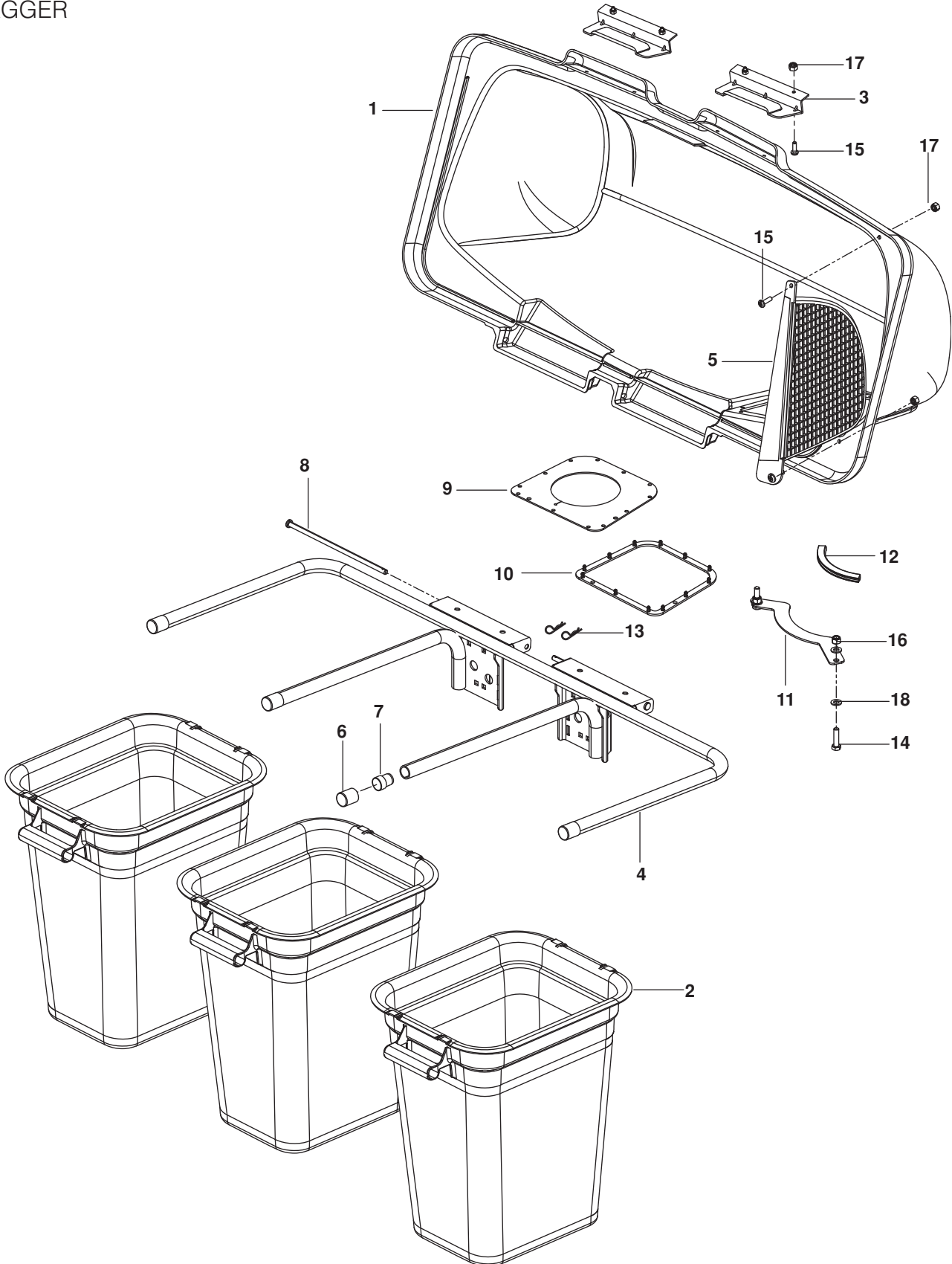


DECALS

ITEM	PART NO.	QTY.	DESCRIPTION	ITEM	PART NO.	QTY.	DESCRIPTION
1..	587 59 56-01.....	1	DECAL, STEER / BRAKE LT	9..	583 93 40-01.....	1	DECAL, SAFETY WARNINGS
2..	587 59 55-01.....	1	DECAL, STEER / BRAKE RT	10..	532 42 38-29.....	1	DECAL, RESPONSIBILITY
3..	587 86 54-01.....	2	DECAL, Z 254i	11..	588 03 52-01.....	1	DECAL, START
4..	539 10 57-45.....	1	DECAL, BATTERY WARNING	12..	581 72 44-01.....	1	DECAL, DEFLECTOR
5..	532 42 86-77.....	1	DECAL, CROWN	13..	584 90 46-01.....	1	DECAL, BLADE DANGER
6..	539 10 83-85.....	1	DECAL, DO NOT TOW	14..	539 11 26-20.....	1	DECAL, BELT ROUTING
7..	539 10 83-86.....	1	DECAL, EXIT MOWER	15..	577 46 90-01.....	2	DECAL, HUSQVARNA
8..	539 10 98-97.....	1	DECAL, SERVICE	16..	587 00 07-01.....	1	ABRASIVE PAD

ACCESSORIES

BAGGER

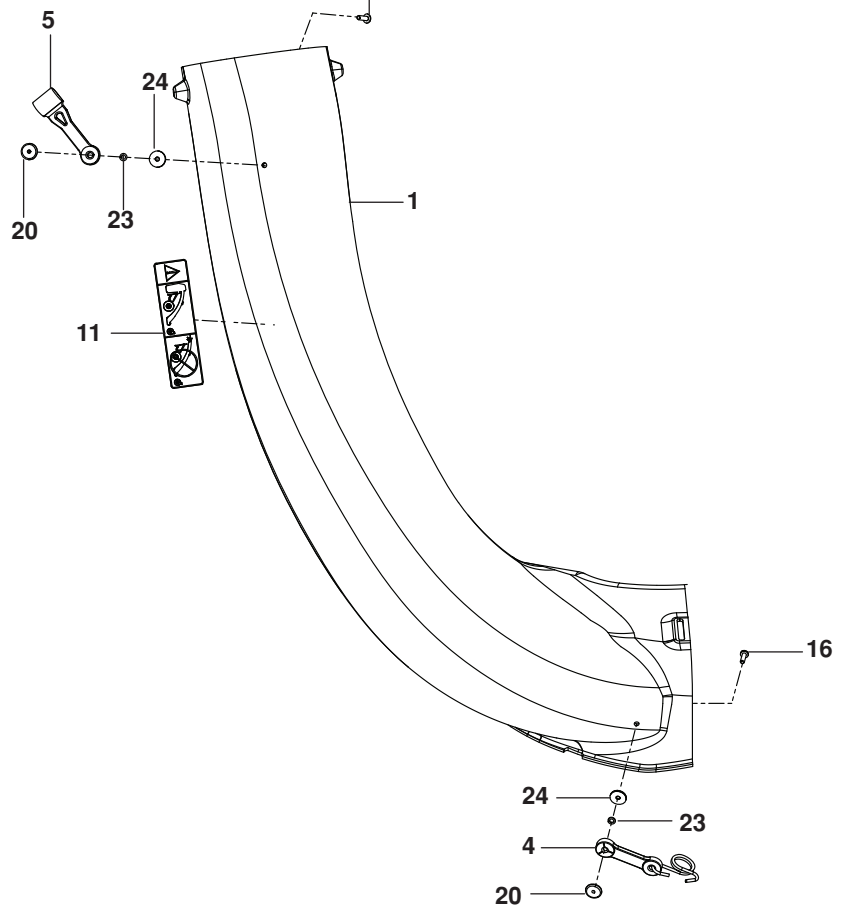
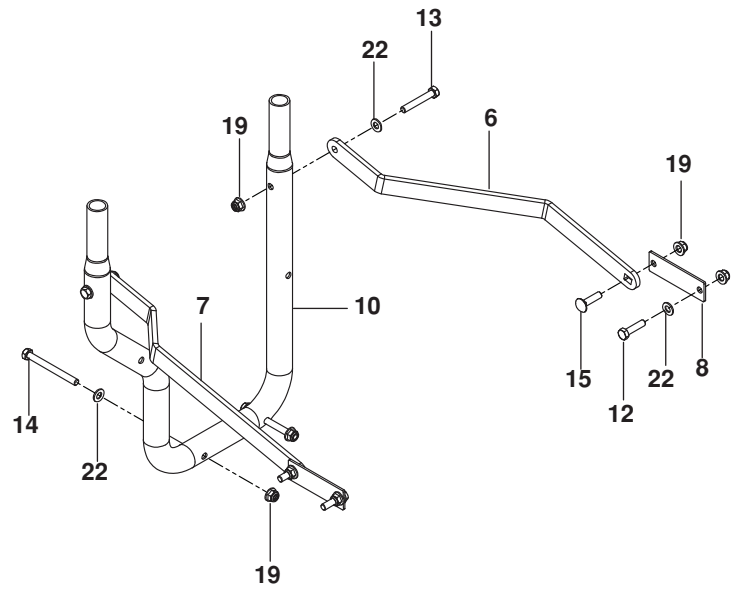
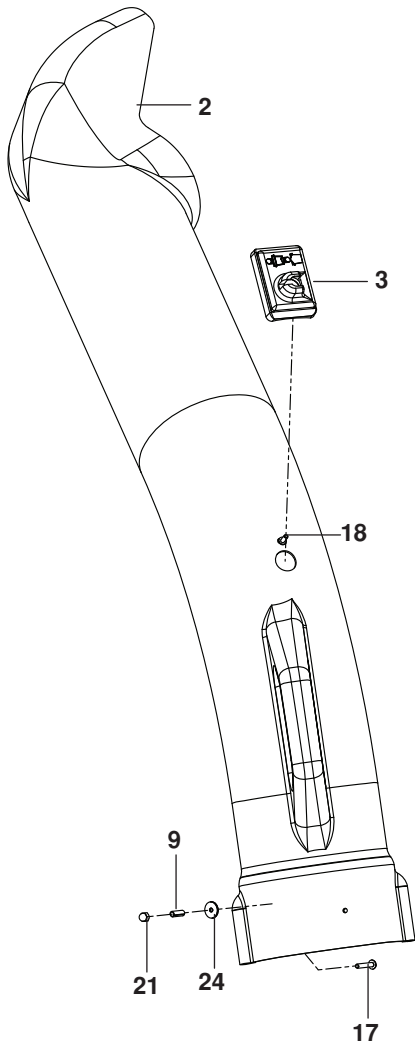


ACCESSORIES

ITEM	PART NO.	QTY.	DESCRIPTION	ITEM	PART NO.	QTY.	DESCRIPTION
1..	532 19 53-73.....	1	COVER	10..	532 19 26-03.....	1	GASKET, COVER
2..	532 40 02-26.....	3	CONTAINER, SOFT BAG	11..	539 11 02-81.....	1	SUPPORT, CHUTE
3..	532 13 08-95.....	2	HANDLE, BAGGER COVER	12..	539 11 22-94.....	1	FLEX TRIM
4..	539 10 80-98.....	1	FRAME, BAGGER	13..	539 10 80-96.....	2	HAIR PIN
5..	532 19 27-09.....	1	SCREEN, COVER	14..	539 99 06-27.....	2	BOLT $\frac{5}{16}$ -18 x $1\frac{1}{4}$ HEX HD
6..	539 10 80-97.....	4	PLUG, TUBING END	15..	539 97 69-52.....	6	SCREW #10-24 x $\frac{5}{8}$
7..	522 80 13-01.....	2	PLUG, SPACER	16..	539 11 28-99.....	2	NUT $\frac{5}{16}$ -18 HEX FLG NYLOC
8..	532 19 27-86.....	2	PIN, HINGE	17..	539 97 69-77.....	6	NUT #10-24 CROWNLOCK
9..	532 19 25-50.....	1	SEAL, COVER	18..	819 11 11-16.....	4	WASHER $\frac{5}{16}$ SAE

ACCESSORIES

CHUTES, MOUNT



ACCESSORIES

ITEM	PART NO.	QTY.	DESCRIPTION	ITEM	PART NO.	QTY.	DESCRIPTION
1..	539 11 32-04.....	1	CHUTE, LOWER	14..	539 10 15-20.....	2	BOLT $\frac{5}{16}$ -18 x $3\frac{1}{4}$ HEX HD
2..	539 10 81-41.....	1	CHUTE, UPPER	15..	539 10 04-72.....	2	BOLT $\frac{5}{16}$ -18 x $1\frac{1}{4}$ RDHD SQNK
3..	539 10 80-82.....	1	INDICATOR, BAG DUMP	16..	539 97 69-52.....	3	SCREW #10-24 x $\frac{5}{8}$
4..	532 16 07 93.....	2	LATCH	17..	539 10 80-83.....	1	SCREW #10-24 x $1\frac{1}{8}$
5..	539 10 80-88.....	1	LATCH, HOOD	18..	539 10 80-81.....	1	SCREW #10-14 x $\frac{1}{2}$
6..	522 85 45-02.....	1	STRAP, SUPPORT, LT	19..	539 11 28-99.....	8	NUT $\frac{5}{16}$ -18 HEX FLG NYLOC
7..	522 85 44-02.....	1	STRAP, SUPPORT, RT	20..	539 10 80-89.....	3	NUT #10-24 WELD PLATED
8..	523 11 28-02.....	2	PLATE, REINFORCE	21..	539 10 80-86.....	1	NUT #10-24 ACORN
9..	539 10 80-85.....	1	SPACER, SPLIT	22..	819 11 11-16.....	6	WASHER $\frac{5}{16}$ SAE FLAT
10..	539 13 10-91.....	1	MOUNT, TUBE	23..	539 10 95-52.....	2	WASHER $\frac{3}{16}$ LK
11..	539 10 81-63.....	1	DECAL, CATCHER	24..	539 10 80-84.....	4	WASHER $\frac{3}{16}$ x $\frac{3}{4}$ 16 GA
12..	874 78 05-20.....	2	BOLT $\frac{5}{16}$ -18 x $1\frac{1}{4}$ HEX HD				
13..	874 78 05-32.....	2	BOLT $\frac{5}{16}$ -18 x 2 HEX HD				

www.husqvarna.com

115 73 88-27 Rev A
2014-11-30