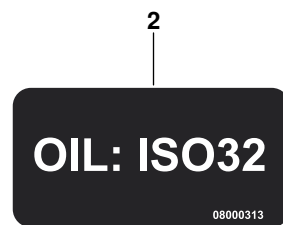
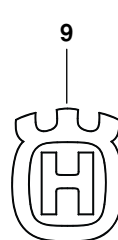
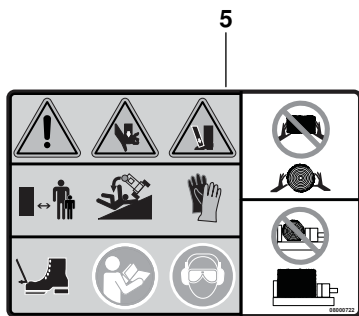
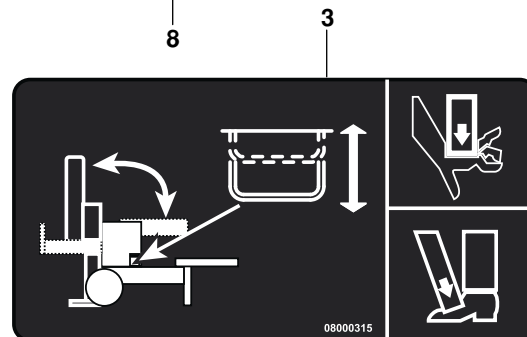
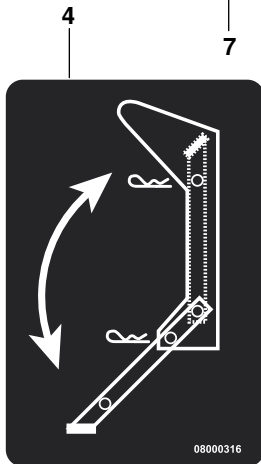
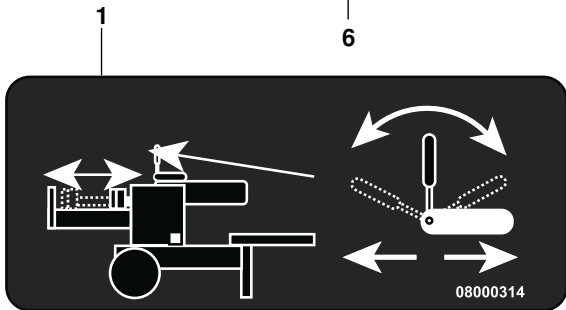
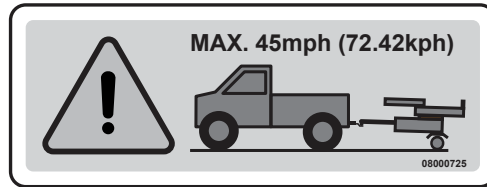
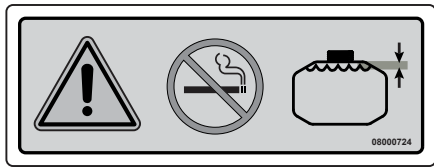


DECALS

Parts List No. 115 73 92-27		 Husqvarna® PARTS LIST	Model S427
Date 2015-03-04	Replaces Rev. A		NOTE : Illustration may differ from actual model due to design changes.

⚠ WARNING
 All repairs, adjustments and maintenance not described in the Operator Manual must be performed by Qualified Service Personnel.

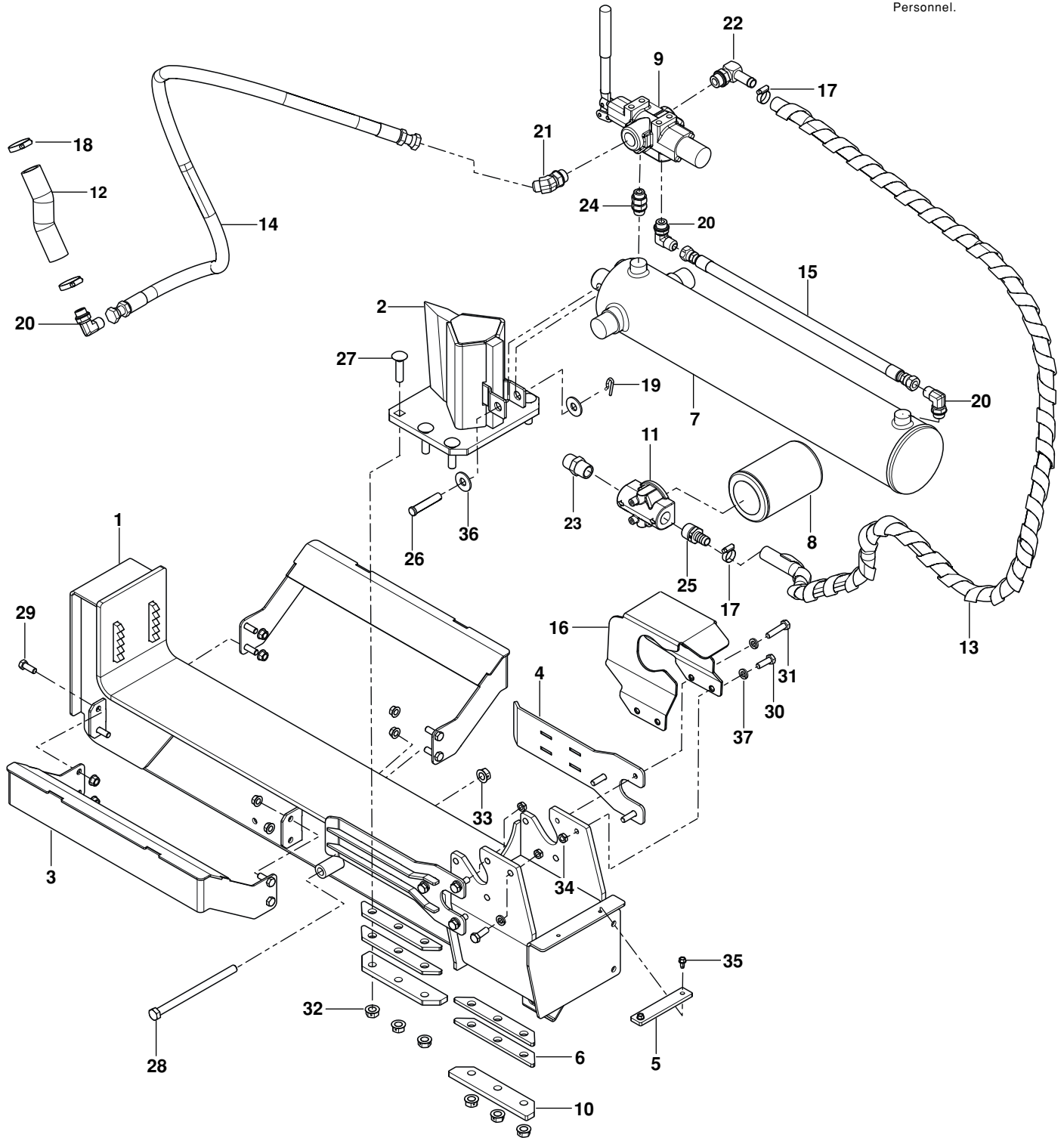


Ref.	Part No.	Qty	Description	Ref.	Part No.	Qty	Description	Ref.	Part No.	Qty	Description
1	588 01 16-03	1	Decal, Ram Oper	5	588 01 16-07	1	Decal, Danger	9	532 42 86-76	1	Decal, Emblem
2	588 01 16-04	1	Decal, Hydraulic Oil	6	588 01 16-08	1	Decal, Fuel Warning	10	588 06 16-01	1	Decal, Capacity
3	588 01 16-05	1	Decal, Rear Stand	7	588 01 16-09	1	Decal, Hyd Warning	11	588 01 16-02	2	Decal, Logo Model
4	588 01 16-06	1	Decal, Tilt Operation	8	588 01 16-10	1	Decal, Towing				

CYLINDER

Parts List No. 115 73 92-27		 Husqvarna® PARTS LIST	Model S427
Date 2015-03-04	Replaces Rev. A		NOTE : Illustration may differ from actual model due to design changes.

⚠ WARNING
 All repairs, adjustments and maintenance not described in the Operator Manual must be performed by Qualified Service Personnel.

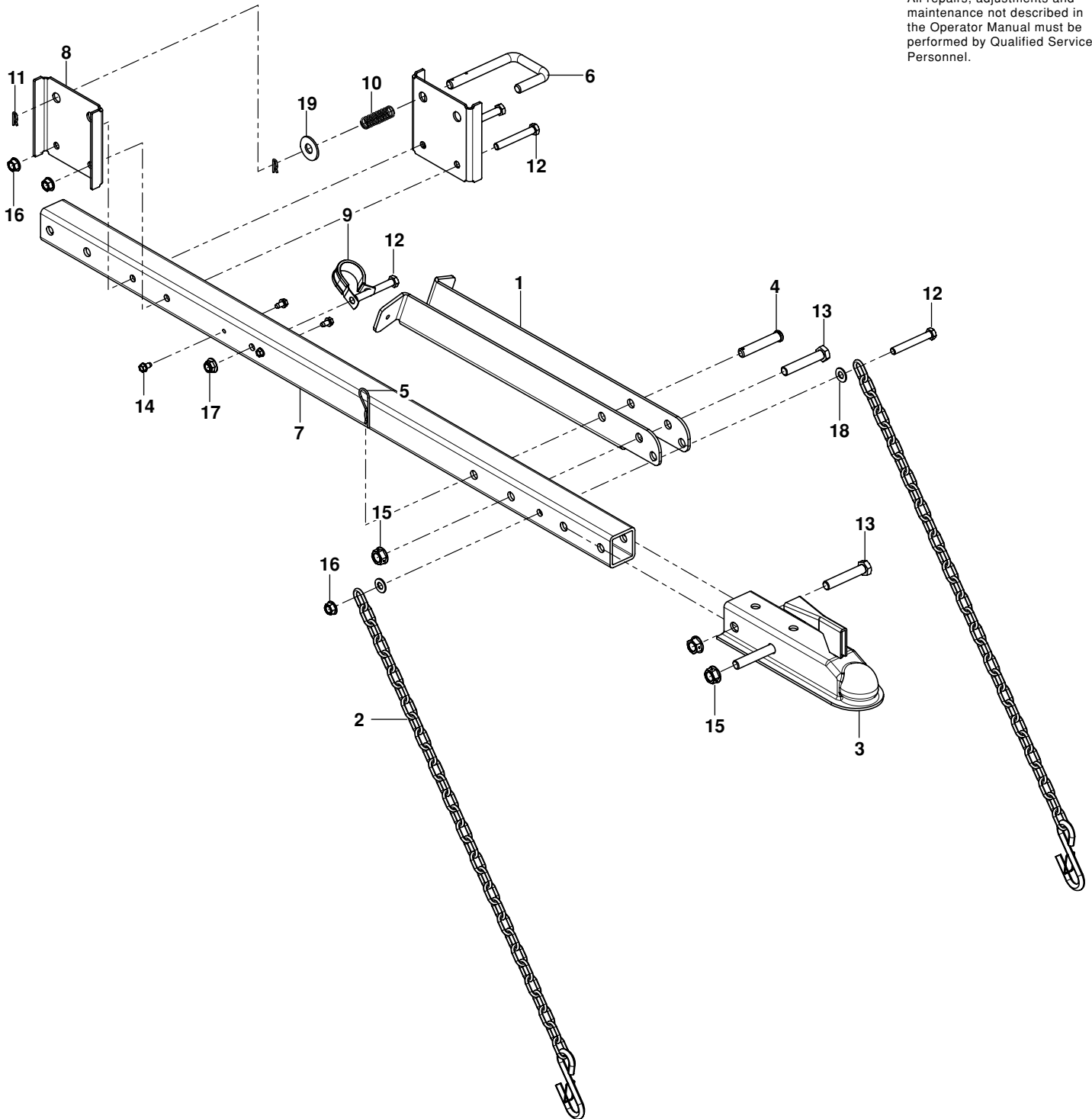


Ref.	Part No.	Qty	Description	Ref.	Part No.	Qty	Description	Ref.	Part No.	Qty	Description
1	588 01 05-01	1	Beam	14	588 01 02-01	1	Hose, Hyd 8M3k-8Fjx	27	588 01 06-05	6	Bolt 1/2-13 x 2 Rdhd Sqnk
2	588 03 13-01	1	Wedge, Splitter	15	588 01 26-01	1	Hose Assy, 8M3k-8Fjx	28	588 01 06-03	1	Bolt Hex 1/2-13 x 7 1/2
3	588 01 14-01	2	Cradle, Log Splitter	16	588 01 37-01	1	Shield, Valve	29	588 06 47-08	8	Bolt Hex .38-16 x 1
4	588 01 33-01	2	Plate, Stripper, Orange	17	588 01 10-01	2	Clamp, .88 Dia Hose	30	588 06 47-05	6	Bolt Hex .31-18 x 1
5	588 01 38-01	1	Spacer, Cylinder	18	588 01 10-02	2	Clamp, Hose 1 1/2	31	588 12 81-01	2	Bolt Hex .31-18 x 1 1/4
6	588 01 38-02	4	Spacer, Wedge	19	588 01 11-01	1	Clip, Spring	32	588 01 31-01	7	Nut, Lk-Ctr-Flg 1/2-13
7	588 01 15-01	1	Cylinder, Splitter	20	588 01 22-04	3	Fitting 6801-8-8	33	588 01 31-04	8	Nut, Lk-Top-Flg .38-16
8	588 01 21-01	1	Filter, Oil w/Bypass	21	588 01 22-02	1	Fitting 6802-8-10	34	588 01 31-03	6	Nut, Lk-Top-Flg .31-18
9	588 03 16-01	1	Valve, Control, Splitter	22	588 01 22-01	1	Fitting 4601-10-10	35	588 01 36-01	2	Screw 1/4-20 x 1/2 Tap
10	588 01 35-01	2	Retainer, Wedge Blk	23	588 12 79-01	1	Fitting 5404-12-12	36	588 03 17-01	2	Washer
11	588 72 59-01	1	Head, Filter	24	588 01 22-03	1	Fitting Str 08 Maorb	37	588 12 80-01	8	Washer, Lock
12	588 01 26-02	1	Hose, Hyd Suction 6 3/4"	25	588 72-60-01	1	Fitting 3/4 Barbed				
13	588 01 26-03	1	Hose, Hyd, Return 74"	26	588 01 32-01	1	Pin, Clevis				

FRAME

Parts List No. 115 73 92-27		 Husqvarna® PARTS LIST	Model S427
Date 2015-03-04	Replaces Rev. A		NOTE : Illustration may differ from actual model due to design changes.

⚠ WARNING
All repairs, adjustments and maintenance not described in the Operator Manual must be performed by Qualified Service Personnel.

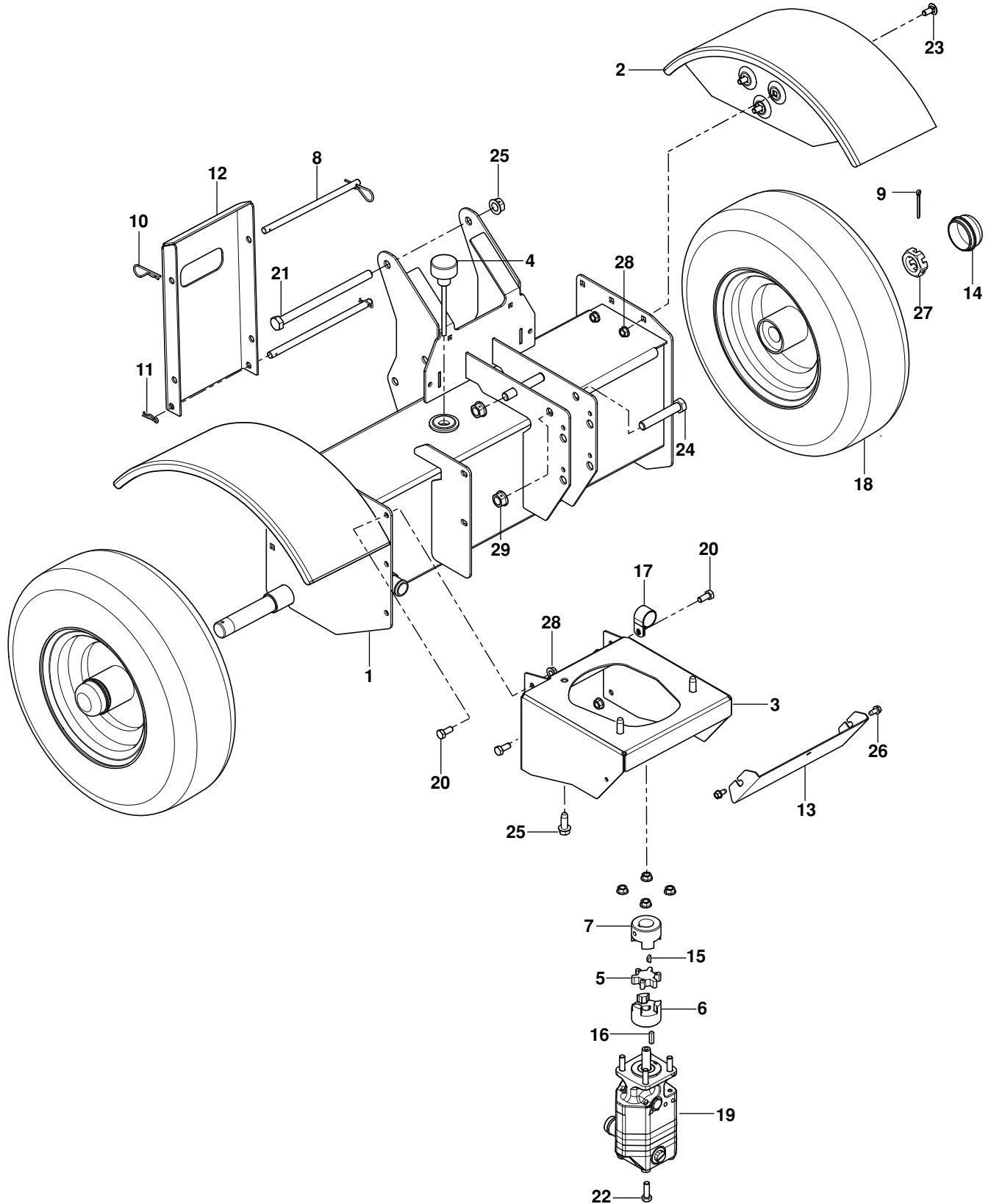


Ref.	Part No.	Qty	Description	Ref.	Part No.	Qty	Description	Ref.	Part No.	Qty	Description
1	588 01 28-01	1	Stand, Front	8	588 01 23-01	2	Guide, Lock Down	15	588 01 31-01	3	Nut, Lk-Ctr-Flg ½-13
2	588 01 08-01	2	Chain	9	588 01 10-02	1	Clamp, Cush Steel, 1¼	16	588 01 31-04	3	Nut, Lk-Top-Flg .38-16
3	588 01 25-01	1	Hitch, Ball 2"	10	588 03 14-01	1	Spring, Compression	17	588 07 06-10	1	Nut, Lk-Nyl-Flg .38-16
4	588 01 32-02	1	Pin, Clevis ½ x 3	11	588 01 11-01	2	Clip, Spring	18	588 07 32-10	2	Washer-FI-Stl .406 x .812
5	588 01 24-01	1	Pin #7 Hair, Clip	12	588 01 06-01	4	Bolt .38-16 x 3 Hex	19	588 03 17-01	1	Washer-FI-Stl .563 x 1.38
6	588 01 29-01	1	Lock, Beam	13	588 01 06-02	3	Bolt ½-13 x 3 Hex				
7	588 01 18-01	1	Drawbar	14	588 01 36-01	4	Screw ¼-20 x ½ Tap				

HYDRAULIC FRAME

Parts List No. 115 73 92-27		 Husqvarna® PARTS LIST	Model S427
Date 2015-03-04	Replaces Rev. A		NOTE : Illustration may differ from actual model due to design changes.

▲ WARNING
 All repairs, adjustments and maintenance not described in the Operator Manual must be performed by Qualified Service Personnel.



Ref.	Part No.	Qty	Description	Ref.	Part No.	Qty	Description	Ref.	Part No.	Qty	Description
1	588 01 09-01	1	Chassis, Splitter Org	11	588 07 08-05	2	Pin #25 Hair	21	588 01 06-03	1	Bolt Hex .50-13 x 7½
2	588 01 20-01	2	Fender	12	588 03 15-01	1	Support, Rear Leg	22	588 06 47-05	4	Bolt .31-18 x 1 Hex
3	588 01 30-01	1	Mount, Engine Pump	13	588 01 13-01	1	Cover, Coupling	23	588 01 06-04	6	Bolt .31-18 x ¾ Rd Hd
4	588 01 17-01	1	Breather, Dipstick	14	588 01 07-01	2	Cap, Dust	24	588 01 06-02	2	Bolt Hex ½-13 x 3
5	588 03 12-01	1	Spider, Urethane	15	588 01 27-02	1	Key, Wdrf .125 x .50 x .20	25	588 01 36-02	3	Screw .38-16 x 1 Tap
6	588 01 12-01	1	Coupler ½"	16	588 01 27-01	1	Key-Sq .188 x .188 x .750	26	588 01 36-01	2	Screw ¼-20 x ½ Tap
7	588 01 12-02	1	Coupler 7/8	17	588 01 10-01	1	Clamp, Cush Steel	27	588 01 31-05	2	Nut, SI 1.0-14
8	588 71 16-01	2	Pin, Clevis	18	588 01 04-01	2	Wheel 8 x 3¾ w/ 4.125	28	588 01 31-03	10	Nut, Lk-Top-Flg .312-18
9	588 01 32-03	1	Pin, Ctr .15 x 1½	19	588 01 34-01	1	Pump, Splitter 11 Gpm	29	588 01 31-01	4	Nut-Lk-Ctr-Flg .50-13
10	588 01 24-01	2	Pin #7 Hair	20	588 06 47-04	4	Bolt .31-18 x ¾ Hex				