

# COLLECTION SYSTEM

## Operator / Parts Manual



**966 79 30-02 52"**

**966 79 30-03 61"**

Please read the operator manual carefully and make sure you understand the instructions before using the machine.




CONGRATULATIONS on the purchase of a new collection system. It has been designed, engineered and manufactured to give the best possible dependability and performance.

If you experience any problem you cannot easily remedy, contact your nearest authorized service center/ department. They have competent, well-trained technicians and the proper tools for service and repairs.


Please read and retain this manual. The instructions will enable you to assemble and maintain your collection system properly. Always observe the SAFETY RULES.


## KNOW YOUR GRASS CATCHER


READ THIS OPERATION MANUAL AND SAFETY RULES BEFORE ASSEMBLING OR OPERATING YOUR COLLECTION SYSTEM. Compare the illustrations with the carton contents to familiarize yourself with the parts before starting the assembly. Study the operating instructions and safety precautions thoroughly to insure proper functioning of your Grass Catcher and to prevent injury to yourself and others. Save this manual for future reference.

 **CAUTION!** DO NOT operate mower with grass catcher only partially installed.


- Disengage blades and stop engine before leaving the mower seat to empty containers, unclog chutes, etc.
- Close the cover before starting.
- Disengage the mower blades when crossing driveways or gravel surfaces and other areas where thrown objects could be a hazard.
- DO NOT attempt to vacuum cans or other potentially hazardous projectiles.


 **CAUTION!** Grass catcher components are subject to wear, damage and deterioration, which could expose moving parts or allow objects to be thrown. Frequently check components and replace with manufacturer's recommended parts, when necessary.


 **CAUTION!** The operation of any mower can result in foreign objects thrown into the eyes, which can result in severe eye damage. ALWAYS wear safety glasses or eye shields before starting the mower and while mowing. Standard safety glasses are recommended or a wide vision safety mask for over spectacles.

 **CAUTION!** Before assembling grass catcher to mower:

- Set the park brake.
- Place the motion control levers in NEUTRAL position.
- Turn the ignition key OFF and remove key.
- Make sure the blades and all moving parts have completely stopped.

 **CAUTION!** Do not leave grass in the bagger containers. Empty the containers after each use and before storing. Failure to do so may cause spontaneous combustion resulting in a fire.

 **CAUTION!** DO NOT operate the mower with the grass catcher without the front weights installed.

 **CAUTION!** Never make adjustments or repairs with the engine running.

## General Use and Care

### Tips For Improved Bagging

- Follow the mower operation instructions in the Operator Manual.
- When using the grass catcher on a lawn where grass and leaf bagging equipment has not been used previously, thatch and debris that has accumulated for long periods of time is picked up. The amount collected and the total time of operation may be greater than will be experienced with regular use of the grass catcher.
- Always run the throttle at full speed when bagging.
- Select a ground speed low enough to give good mower cutting performance, a good quality cut and good bagging performance.  
*NOTE: It may be necessary to overlap the width of cut to suit conditions.*
- If the grass is extremely tall, it should be mowed twice. The first cut should be at one of the highest settings, the second time to the desired height.
- Use the left hand side of the mower for trimming.
- Avoid cutting grass in the morning while the dew is still heavy or when the grass is wet. Grass clippings collected under these conditions will bond to the walls of the flow path and cause clogging.
- If the grass catcher fails to pick up cut grass or leaves, it is an indication that clogging has occurred in the system or that the grass catcher containers are full.
  - a. Disengage blades, place the motion control levers in neutral position.
    - Unlatch and raise cover.
    - Slide out containers and dispose of clippings.
    - Replace containers, close cover, and latch.
  - b. Unlatch the chutes and check for clogging.
    - Remove all debris in chute.
    - Reassemble and latch chutes.
- Plastic trash bags (3.0 mil, 30 gallon) can be inserted inside the grass catcher containers for ease of debris disposal. To remove the plastic trash bags when full:
  - a. Disengage blades, shift into neutral, engage the park brake and stop the engine.
  - b. Unlatch and raise cover.
    - c. Remove one container at a time by grasping the container handles and pulling it off of the tube rails.
    - d. With the container resting on the ground, close and secure the top of the plastic lawn bag.
    - e. Tip the container on its side and slide the filled bag from the container.
    - f. Install a new plastic lawn bag with the edges of the bag draped over upper lip of the container.
    - g. Repeat for other container.
    - h. Reinstall the containers, making sure the right container overlaps the left container at center supports.
      - i. Close the cover and secure the latches over the center support tubes.

### General Recommendations

Always observe the safety rules when performing any maintenance.

- Before each use, check for loose fasteners.
- Clean the unit thoroughly after each use.

### Blade Care

- For best results, the mower blades must be kept sharp. Replace bent or damaged blades.
- See the instructions in the mower Operator Manual.

### Storage

When the grass catcher is to be stored for a period of time, clean it thoroughly to remove debris and store in a clean, dry area.

## General Operation

- **DO NOT** operate the mower with the grass catcher unless the front weights are installed.
- Read, understand and follow all instructions in the manual and on the machine before starting.
- Keep the machine free of debris buildup that can touch hot exhaust/engine parts and burn. Do not allow the mower deck to plow leaves or other debris that can cause a buildup.
- Stop the engine before removing the grass catcher or unclogging chute.
- Do not operate the mower without either the entire grass catcher or the guard in place. Be aware of the mower discharge direction and do not direct it towards anyone.
- Clear the area of objects such as rocks, stones, toys, wire etc., which could be picked up and thrown by the blades.
- Watch for holes, ruts, or bumps. Uneven terrain could overturn the machine. **Tall grass can hide obstacles.**
- Never leave the machine unattended when the engine is running. Always turn off the blades, set the park brake, stop the engine and remove the key before leaving the machine.
- Watch out for traffic when operating near or crossing roadways.
- Use extra care when loading and unloading the machine onto a trailer or truck.

## Slope Operation

Slopes are a major factor related to loss-of-control and tip-over accidents, which can result in severe injury or death. All slopes require extra caution. If you cannot back up the slope or if you feel uneasy on it, do not mow it.

### DO

- Mow up and down slopes (10° Max.), not across.
- Use slow speed. Choose a low speed so that you will not have to stop while on the slope.
- Use extra care with grass catchers or other attachments. These can change the stability of the machine.
- Keep all movement on the slopes **slow and gradual**. Do not make sudden changes in speed or direction.
- Avoid starting or stopping on a slope. If the tires lose traction, disengage the blades and proceed slowly straight down the slope.

### DO NOT

- **Do not** turn on slopes unless necessary, and then, turn slowly and gradually downhill, if possible.
- **Do not** mow near drop-off, ditches, or embankments. The mower could suddenly turn over if a wheel is over the edge of a cliff or ditch, or if an edge caves in.
- **Do not** mow on wet grass. Reduced traction could cause sliding.
- **Do not** try to stabilize the machine by putting your foot on the ground.

## Service

- Grass catcher components are subject to wear, damage, and deterioration, which could expose moving parts or allow objects to be thrown. Frequently check components and replace them with manufacturer's recommended parts, when necessary.
- The operation of any mower can result in foreign objects thrown into the eyes, which can result in severe damage. Always wear safety glasses or eye shields while operating the mower or performing adjustments or repairs. A wide vision safety mask over spectacles or standard safety glasses are recommended.
- Keep nuts and bolts, especially blade attachment bolts, tight and keep equipment in good condition.
- Never tamper with safety devices. Check regularly for proper operation.
- Keep the machine free of grass, leaves, or other debris buildup. Clean oil or fuel spills. Allow the machine to cool before storing.
- Stop and inspect the equipment if you strike an object. Repair, if necessary, before restarting.

# ASSEMBLY

## Tools Required

- Wrench or ratchet and socket 7/16"
- Wrench or ratchet and socket 1/2"
- Wrench or ratchet and socket 3/4"
- Wrench or ratchet and socket 9/16"
- Drill and 3/8" drill bit
- Phillips Screwdriver
- Socket 7/8" • Pliers
- Torque Wrench • Hacksaw

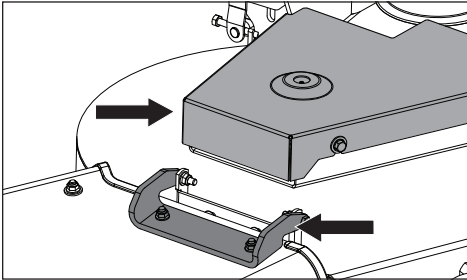
## Container Contents

- Blower Assembly
- Drive Pulley
- Belt Shield
- Mounting Brackets
- Bagger Assembly
- Weights
- Belt
- Bag of Hardware

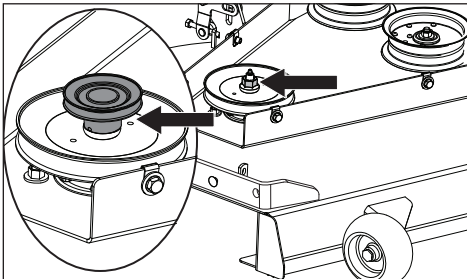
*NOTE: When the terms RH (right hand) or LH (left hand) are used, it refers to when the operator is seated on the mower.*

## Drive Pulley

1. Remove the discharge chute hardware and the chute from the deck. Retain the chute and deck bracket hardware for reuse if the collection system is removed.
2. Remove the chute bracket from the deck. Install the chute bracket included in the kit using the original hardware.
3. Lower deck to the lowest cutting position.
4. Remove the right hand (discharge side) belt cover from the deck.

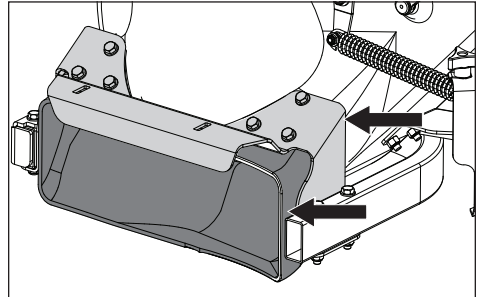


5. Relieve the tension from the deck belt and remove from the center deck pulley. (See Operator Manual if necessary)
6. Remove the nut securing the right hand deck pulley to the spindle.
7. Install drive pulley included in collection kit on top of the current deck pulley.
8. Install the nut on the spindle and torque to 55-75 ft/lbs. Install the deck belt.



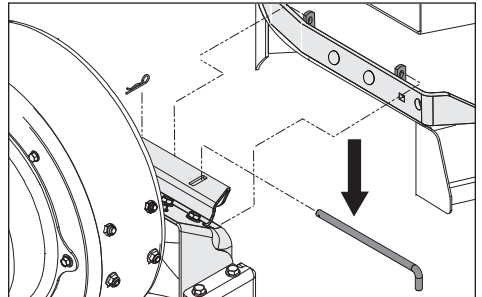
## Blower Trimming

1. Place blower assembly on secure table or stable surface.
2. Remove the bolts securing the rear mount bracket.
3. Using the hacksaw, trim the blower housing along the recessed grooves.
4. Reinstall the rear mount bracket with the previously removed bolts.



## Blower Assembly Mounting

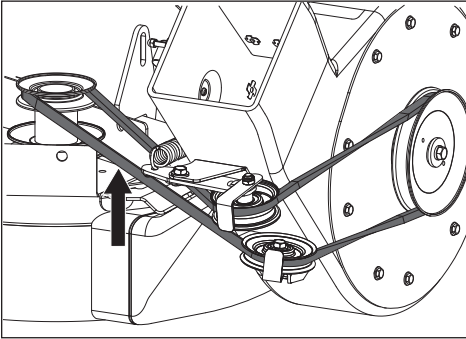
1. Position the blower over the discharge tabs on the deck and set the blower onto the deck.
2. Install the front mount bracket to the deck with the pin and hairpin cotter supplied in the kit.



## ASSEMBLY

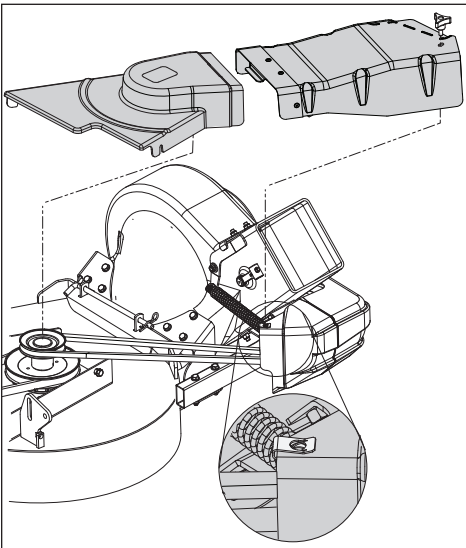
### Drive Belt

1. Make sure the tension release lever is forward or disengaged.
2. Place the belt over the pulley on the deck. Refer to illustration for proper routing.
3. Move the tension release arm to the rear and engage it in the latch.



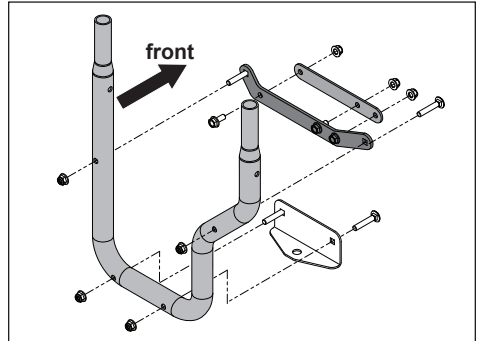
### Belt Covers

1. Place the deck belt shield on the deck over the drive pulley and secure with the hardware removed from the steel belt shield.
2. Place the retainer on the outer pulley cover.
3. Align the tab end of the belt cover into the slot on the deck belt shield and the other end over the end of the outer pulley cover.
4. Secure with knob.

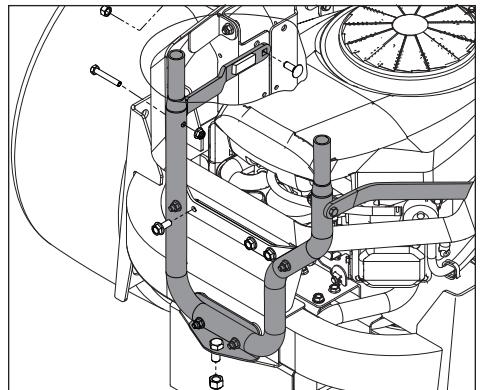


### Bagger Mount

1. Attach the mount hitch to the mount tube with 1-3/4" round head shoulder bolts. Make sure the elbowed arm of the tube is to the right, with the mount hitch installed to the front.
2. Attach the support bracket/spacer assembly to the tube assembly with two 1-3/4" round head shoulder bolts.
3. Secure the lower mount hitch to the frame with a 1" hex bolt.



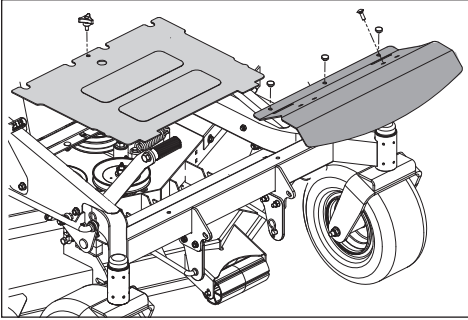
4. Install the mount straps (bends are to the inside) on the outside of the mount tube using 2" hex bolts. The front side of the mount straps are secured to the fuel tank brackets with 1" round head shoulder bolts and nuts.
5. To prevent contact of the left hand strap with the EFM (Electronic Fuel Management) box on the engine, place the foam strip on the inside of the strap, next to the box. (Illustration location is approximate.)
6. It may be necessary to drill holes into the rear guard to accept the hardware for the support bracket and spacer plate. Using the bracket as a template, drill 5/16" holes.
7. Slip the spacer plate between the support bracket and the rear guard and attach both to the rear guard with 3/4" hex bolts. Tighten all hardware.



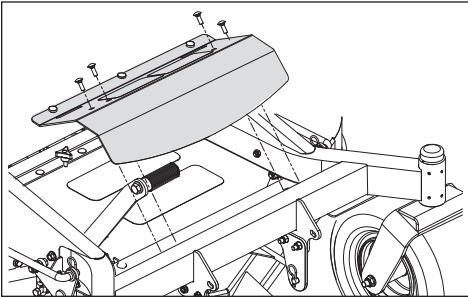
## ASSEMBLY

### Weights

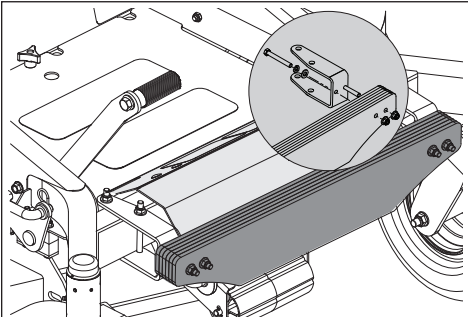
1. Remove the foot plate knob and foot plate. Set aside for later reuse.
2. Remove and reserve the three rubber grommets from the foot rest.
3. Remove the foot rest for replacement. Retain the hardware.



4. Install the three rubber grommets to the new foot rest and fasten the assembly to the frame with the hardware from the old foot rest.

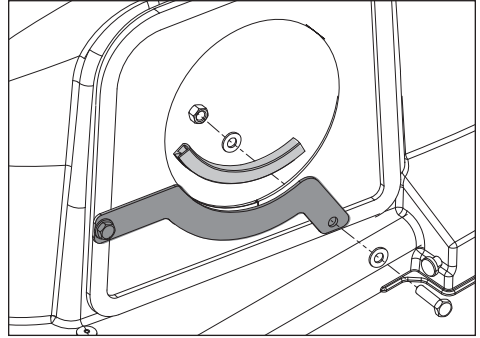


5. Install the foot plate and secure with the knob.
6. Fasten the weight plates to the weight brackets.
7. Secure the weight plate assembly to the front frame of the mower between the caster wheels.



### Chute Support

1. Position upper chute support against bagger inlet, flush at outer edges.
2. Using support as a template, drill two 3/8" holes into bagger hood.

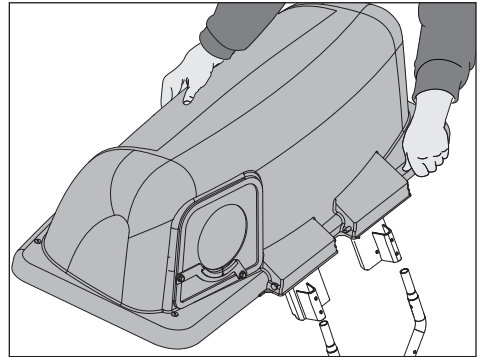


3. Secure upper chute support to hood with hex bolts, washers and nyloc nuts.
4. Slip the flex trim over the bottom edge of the chute opening.

### Mounting Cover Assembly

*NOTE: Assistance from another person may ease mounting the cover assembly to mower.*

1. Lift and rotate cover to align the cover brackets with support assembly tubes.
2. Slide the cover down over the support tubes until secure.

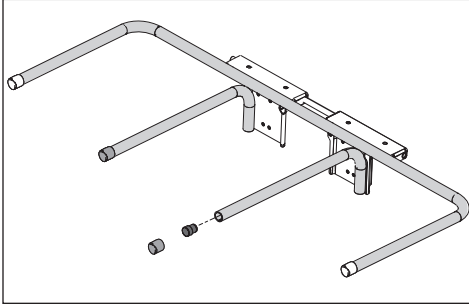




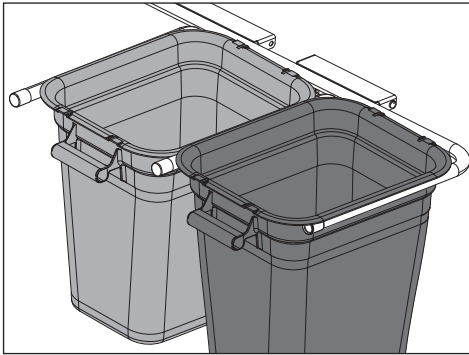
## ASSEMBLY

### Mounting Containers

1. Remove the end caps from the center two bag support arms. Insert the spacer plugs into the ends of the support tubes. It may be necessary to tap the spacers into place with a hammer or mallet. Replace the plastic end caps back over the spacers.

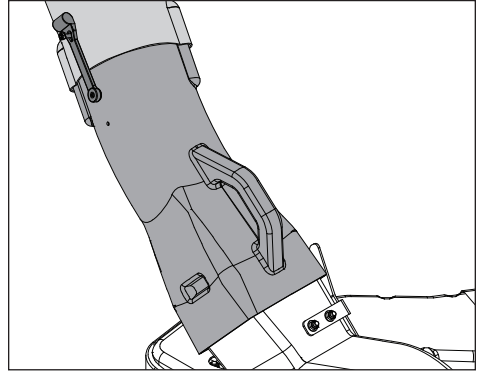


2. Install containers on supports, overlapping at center supports.
3. Close cover and lock latch handles over center support tubes.



### Chutes

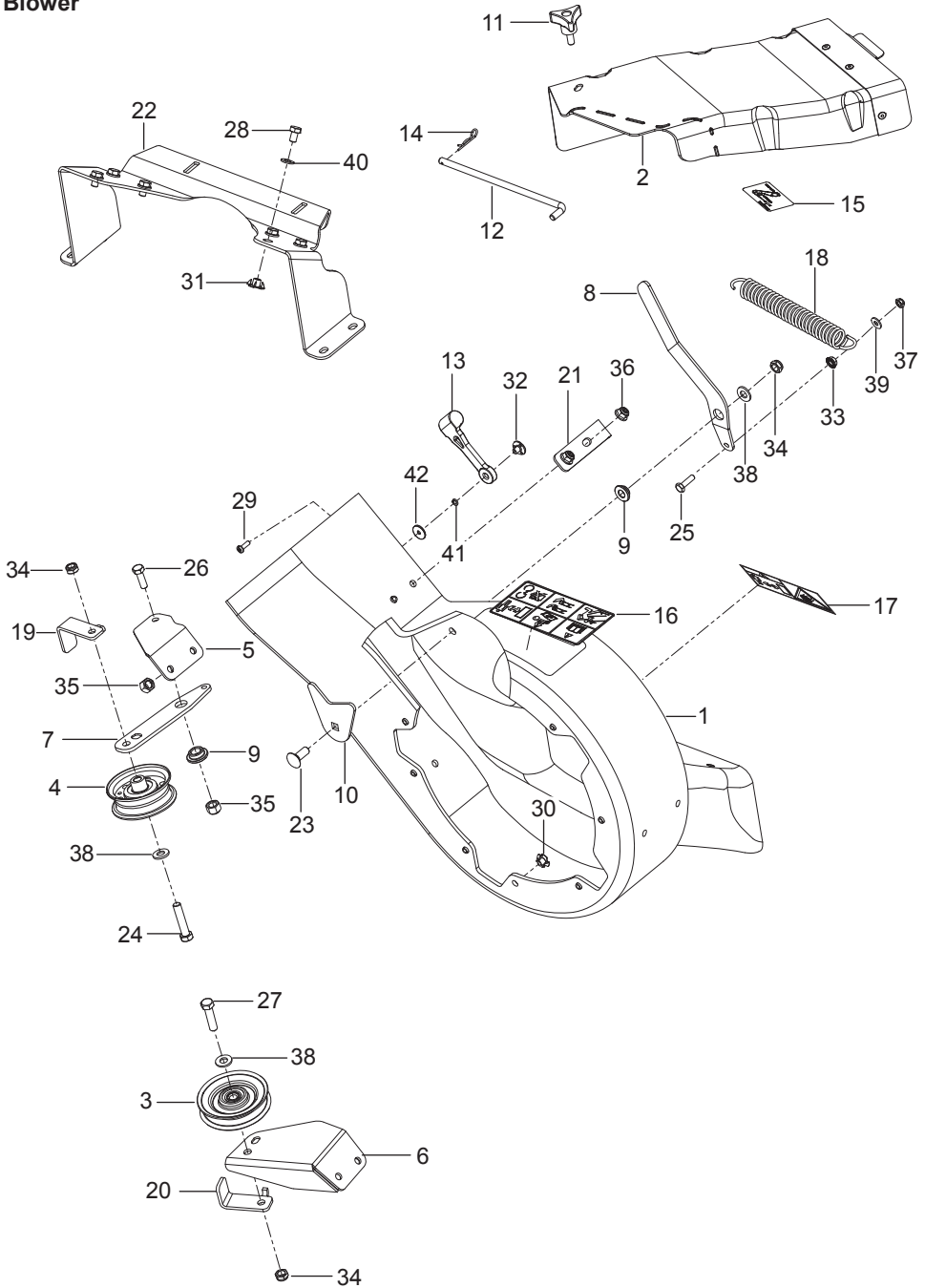
1. Slide upper chute onto middle chute, lining up the middle chute latch and the acorn nut on the upper chute.



2. Stretch the bungee latch up onto the acorn nut.
3. Push the upper chute through the opening in the bagger cover.

# REPAIR PARTS

## Blower

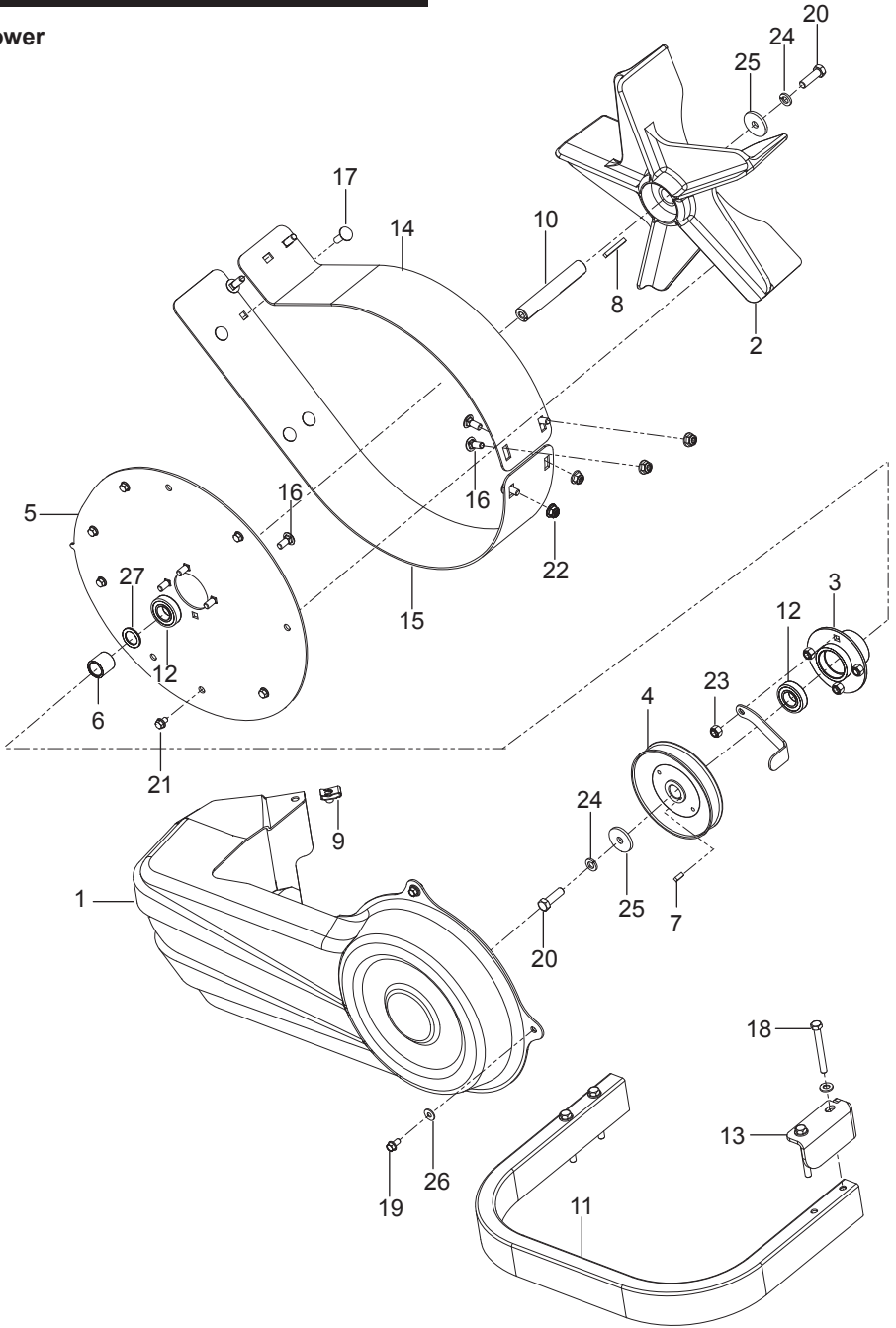


## REPAIR PARTS

1.	539 13 03-44	1	Housing w/ Safety Decals
2.	574 41 15-01	1	Cover, Belt
3.	539 11 36-83	1	Pulley, Idler
4.	539 13 03-24	1	Pulley
5.	579 13 74-02	1	Mount, Upper Blk
6.	579 13 75-02	1	Mount, Lower Blk
7.	579 13 73-02	1	Arm, Idler
8.	539 13 03-38	1	Arm, Tension
9.	539 13 03-01	2	Bushing
10.	539 13 21-24	1	Plate, Backing
11.	539 10 44-11	1	Knob W/ Stud
12.	522 90 98-01	1	Pin, Retention
13.	539 10 80-88	1	Latch, Hood
14.	539 97 69-88	1	Hairpin Cotter
15.	539 13 03-49	1	Decal, Belt Routing
16.	539 10 57-85	1	Decal, Warning
17.	539 10 67-41	1	Decal, Severing
18.	539 10 19-77	1	Spring, Traction
19.	579 13 76-02	1	Keeper, Belt Rear Blk
20.	579 13 77-02	1	Keeper
21.	539 13 03-48	1	Keeper
22.	522 90 96-02	1	Bracket, Mount
23.	872 14 06-08	1	Bolt 3/8-16 x 1 Round Head Square Neck
24.	539 97 69-49	1	Bolt 3/8-16 x 1-3/4 Hex Head
25.	874 78 04-14	1	Bolt 1/4-20 x 7/8 Hex Head
26.	874 78 05-16	1	Bolt 5/16-18 x 1 Hex Head
27.	874 78 06-24	1	Bolt 3/8-16 x 1-1/2 Hex Head
28.	874 78 05-08	6	Bolt 5/16-18 x 1/2 Hex Head
29.	539 97 69-52	1	Screw #10-24 x 5/8 Machine
30.	539 13 03-14	9	Nut 1/4-20 Tee
31.	539 13 03-13	6	Nut 5/16-18 Tee
32.	539 10 80-89	1	Weldnut, Plated
33.	532 43 81-30	1	Nut 1/4-20 Hex Flange Lock
34.	539 20 02-82	3	Nut 3/8-16 Hex Thin Jam Nyloc
35.	873 80 05-00	2	Nut 5/16-18 Hex Nyloc
36.	539 11 28-99	2	Nut 5/16-18 Hex Flange Nyloc
37.	539 10 81-20	1	Nut 1/4-20 Hex Thin Nyloc
38.	819 13 13-16	3	Washer 3/8 SAE Flat
39.	819 09 10-16	1	Washer 1/4 SAE Flat
40.	819 11 11-16	6	Washer 5/16 SAE Flat
41.	539 10 95-52	1	Washer 3/16 Lock
42.	539 10 80-84	1	Washer 3/16 x 3/4 x 16 Gauge

# REPAIR PARTS

## Blower

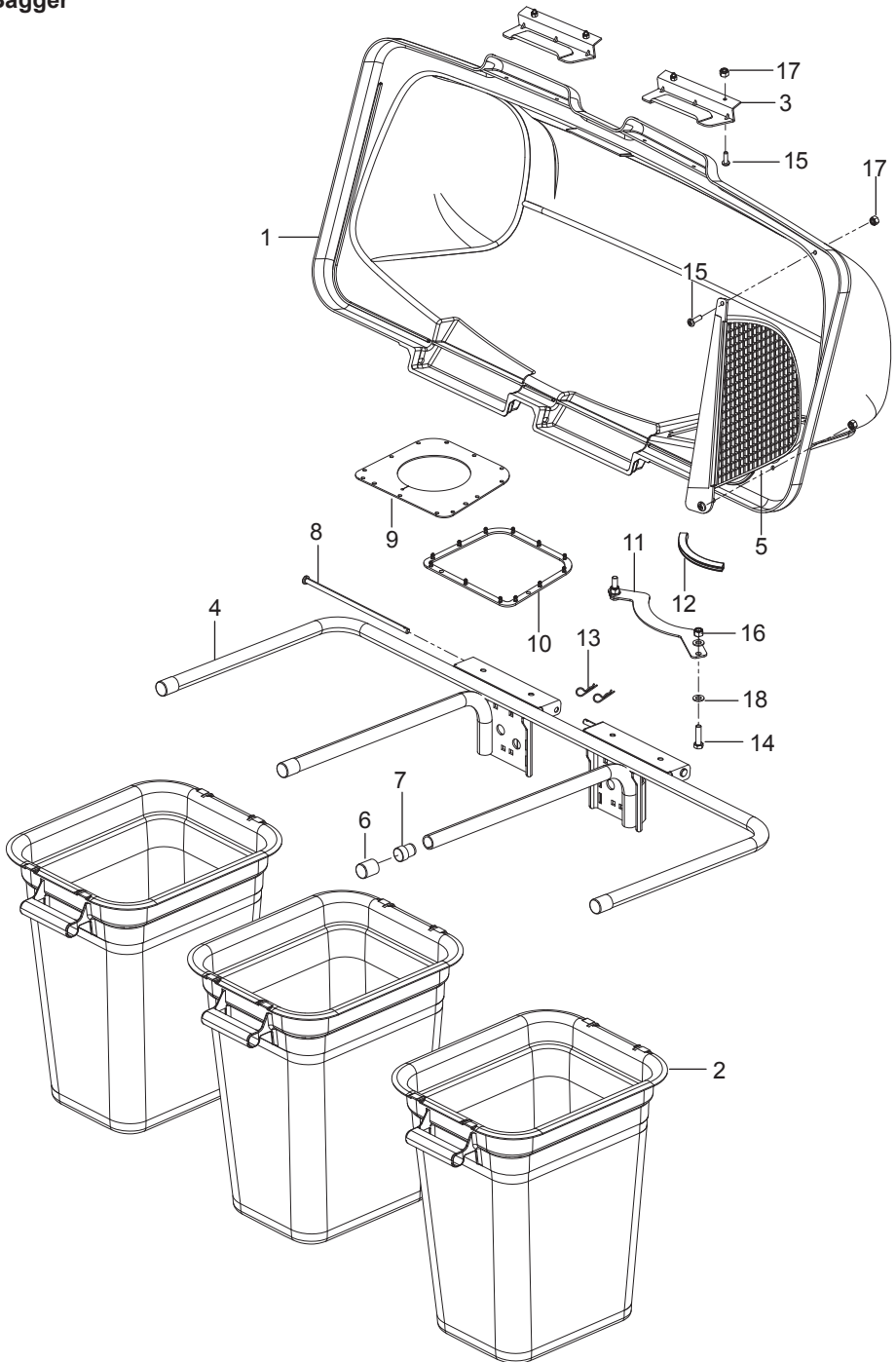


## REPAIR PARTS

1.	539 13 02-93	1	Cover, Belt
2.	539 13 02-92	1	Impeller
3.	539 13 02-95	1	Hub
4.	579 15 08-02	1	Pulley, Idler
5.	539 13 03-41	1	Plate, Outer
6.	539 13 03-23	1	Spacer
7.	539 11 56-67	1	Key 3/16 x 1/2
8.	539 12 52-29	1	Key 1-1/2
9.	539 10 47-63	1	Retainer, U Type
10.	539 13 03-16	1	Shaft, Impeller
11.	522 90 94-02	1	Tube, Rub
12.	539 13 02-96	2	Bearing
13.	522 90 95-02	1	Bracket, Retention
14.	525 61 83-02	1	Sand Liner, Top
15.	522 90 97-02	1	Sand Liner, Bottom
16.	872 14 05-06	8	Bolt 5/16-18 x 3/4 Round Head Square Neck
17.	872 14-05-08	6	Bolt 5/16-18 x 1 Round Head Square Neck
18.	874 78 05-44	4	Bolt 5/16-18 x 2-3/4 Hex Head
19.	817 49 04-08	3	Bolt 1/4-20 x 1/2 Hex Washer Head Self Tap
20.	532 85 08-57	2	Bolt 3/8-24 x 1-1/4 Hex Head Grade 8
21.	539 99 03-02	8	Screw 1/4-20 x 3/8 Thread Form
22.	539 11 28-99	4	Nut 5/16-18 Hex Flange Nyloc
23.	873 80 05-00	7	Nut 5/16-18 Hex Nyloc
24.	810 03 06-00	2	Washer 3/8 Slotted
25.	532 14 02-96	2	Washer, Hardened
26.	819 13 13-16	3	Washer 3/8 SAE Flat
27.	539 91 03-95	1	Washer

# REPAIR PARTS

## Bagger



## REPAIR PARTS

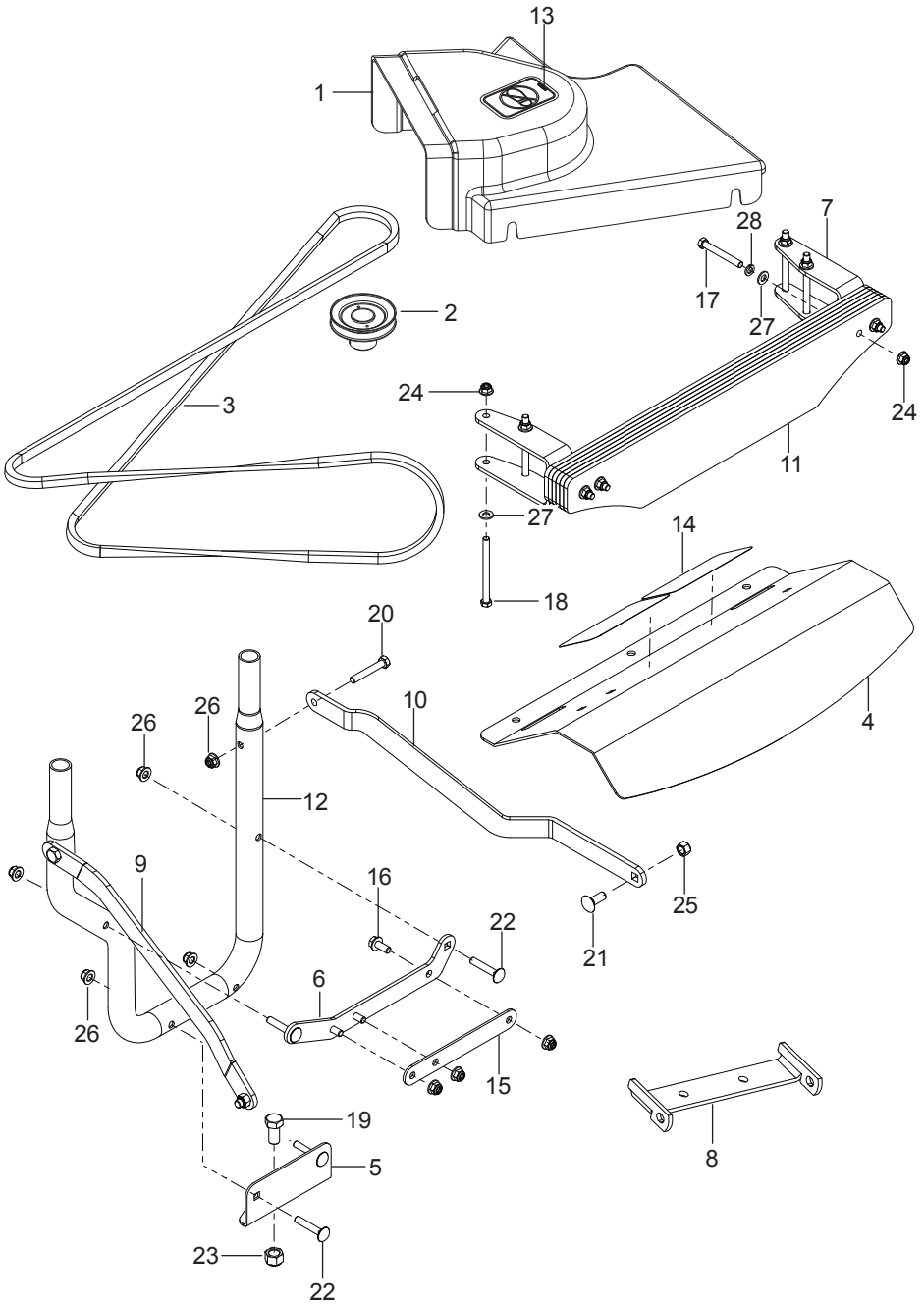
1.	532 19 53-73	1	Cover
2.	532 40 02-26	3	Container, Soft Bag
3.	532 13 08-95	2	Handle, Bagger Cover
4.	539 10 80-98	1	Frame, Bagger
5.	532 19 27-09	1	Screen, Cover
6.	539 10 80-97	4	Cap, Tubing End
7.	522 80 13-01	2	Plug, Spacer
8.	532 19 27-86	2	Pin, Hinge
9.	532 19 25-50	1	Seal, Cover
10.	532 19 26-03	1	Gasket, Cover
11.	539 11 02-81	1	Support, Chute
12.	539 11 22-94	1	Trim, Flex
13.	539 10 80-96	2	Hair Pin
14.	874 78 05-20	2	Bolt 5/16-18 x 1-1/4 Hex Head
15.	539 97 69-52	6	Screw #10-24 x 5/8
16.	539 11 28-99	2	Nut 5/16-18 Hex Flange Nyloc
17.	539 97 69-77	6	Nut #10-24 Crown Lock
18.	819 11 11-16	4	Washer 5/16 SAE

### Not Shown

539 97 68-59	1	Bag, Plastic 12" x 16 x 4 Mil
--------------	---	-------------------------------

# REPAIR PARTS

## Mounts, Guarding, Weights

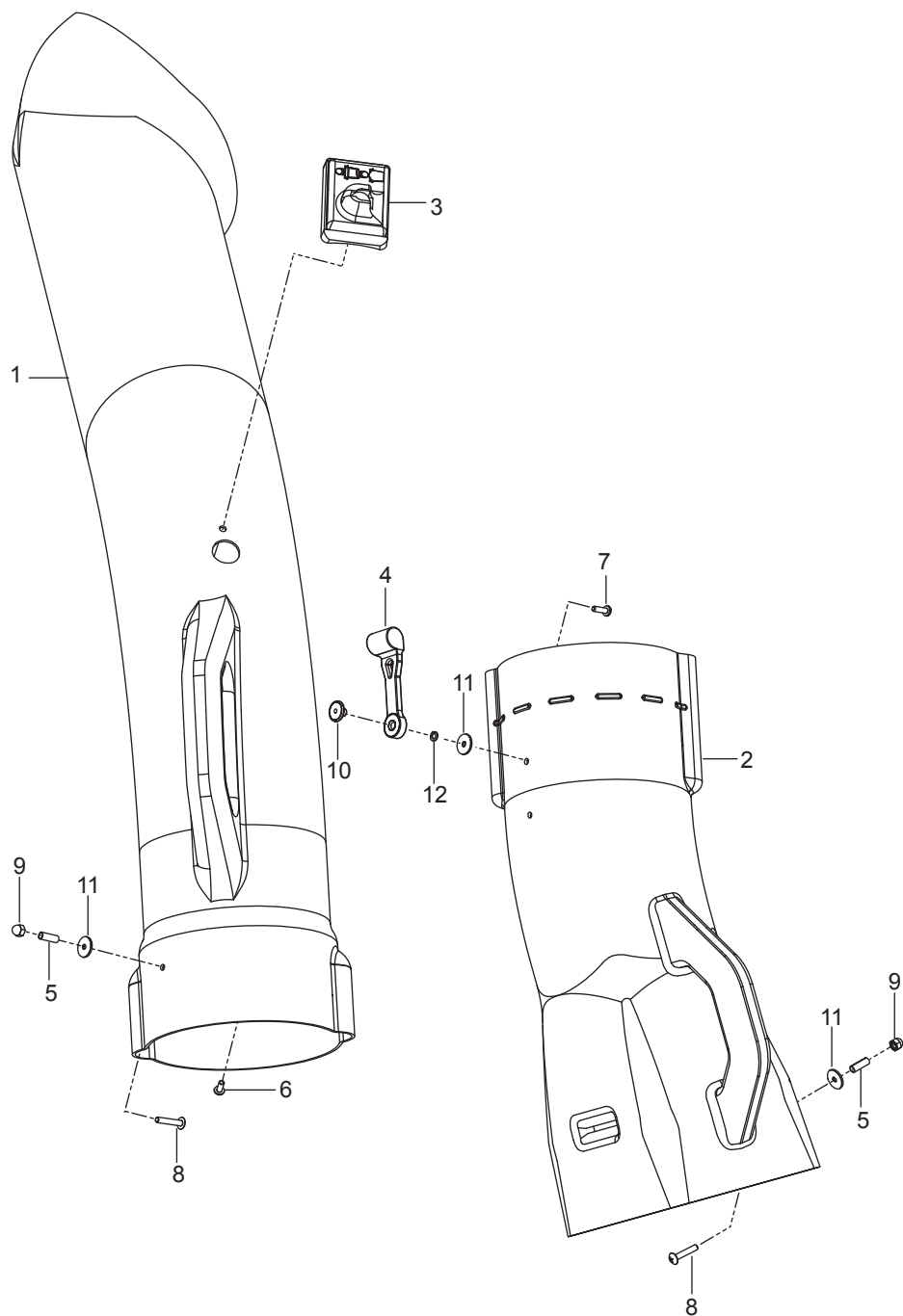




## REPAIR PARTS

1.	539 13 03-07	1	Shield, Belt, 52"
	539 13 03-08	1	Shield, Belt, 61"
2.	539 13 03-20	1	Pulley, 52"
	539 13 03-21	1	Pulley, 61"
3.	539 13 03-47	1	Belt 52"
	539 13 03-48	1	Belt 61"
4.	584 41 20-03	1	Foot Rest, Blk
5.	539 13 21-92	1	Mount, Hitch
6.	576 22 14-02	1	Bracket, Support
7.	522 98 90-02	2	Bracket, Weight
8.	581 60 61-04	1	Bracket, Chute Blk
9.	539 13 21-98	1	Strap, Right Blk
10.	575 95 33-02	1	Strap, Left Blk
11.	539 11 32-32	6	Plate, Weight
12.	539 13 10-91	1	Tube, Mount
13.	539 10 57-43	1	Decal, No Step
14.	539 12 13-22	2	Abrasive Pad
15.	576 22 15-02	1	Spacer
16.	525 46 47-01	3	Bolt 5/16-18 x 3/4 Hex Flange Head
17.	539 10 13-41	4	Bolt 3/8-16 x 3 Hex Head
18.	539 10 23-34	4	Bolt 3/8-16 x 4-1/2 Hex Head
19.	539 99 06-46	1	Bolt 1/2-13 x 1 Hex Head
20.	539 97 69-37	2	Bolt 5/16-18 x 2 Hex Head
21.	539 99 06-45	2	Bolt 3/8-16 x 1 Round Head Square Neck
22.	539 99 08-61	4	Bolt 5/16-18 x 1-3/4 Round Head Square Neck
23.	539 10 13-31	1	Nut 1/2-13 Hex Nyloc
24.	521 96 65-01	8	Nut 3/8-16 Hex Flange Nyloc
25.	539 976979	2	Nut 3/8-16 Hex Nyloc
26.	539 11 28-99	9	Nut 5/16-18 Hex Flange Nyloc
27.	539 99 01-22	8	Washer 3/8 SAE Flat
28.	539 99 01-18	4	Washer 3/8 Lock
Not Shown			
	539 11 02-90	1	Block, Foam

**Chutes**



## REPAIR PARTS

1.	539 108141	1	Chute, Upper
2.	539 130294	1	Chute, Middle
3.	532 130933	1	Indicator, Bag Dump
4.	539 108088	1	Latch, Hood
5.	539 108085	2	Spacer, Split
6.	539 108081	1	Screw #10-14 x 1/2
7.	539 976952	1	Screw #10-24 x 5/8
8.	539 108083	2	Screw #10-24 x 1-1/8
9.	539 108086	2	Nut #10-24 Acorn
10.	539 108089	1	Weldnut, Plated
11.	539 108084	3	Washer 3/16 x 3/4 x 16 Gauge
12.	539 109552	2	Washer 3/16 Lock

**115 58 40-27 Rev C**  
**2015-11-15**