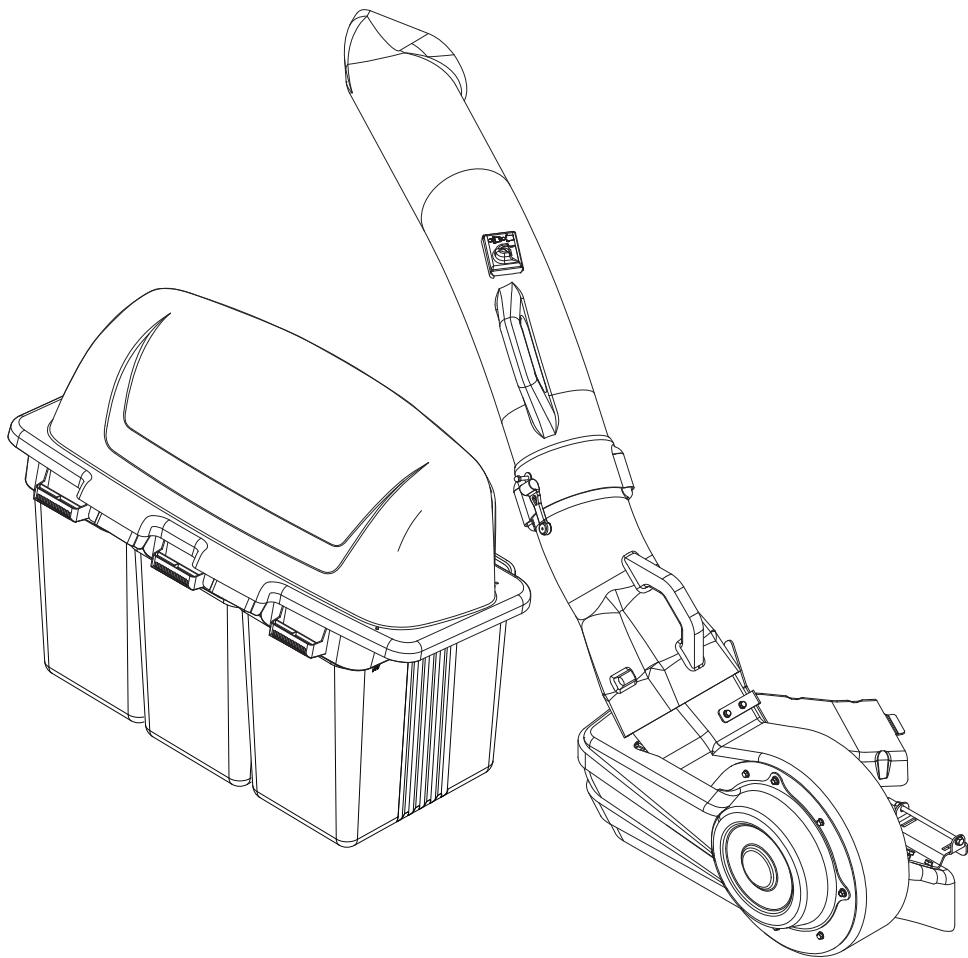


COLLECTION SYSTEM

Operator / Parts Manual



587 96 02-01
48" / 3 BAG

Please read the operator manual carefully and make sure you understand the instructions before using the machine.


CONGRATULATIONS on the purchase of a new collection system. It has been designed, engineered and manufactured to give the best possible dependability and performance.


If you experience any problem you cannot easily remedy, contact your nearest authorized service center/ department. They have competent, well-trained technicians and the proper tools for service and repairs.


Please read and retain this manual. The instructions will enable you to assemble and maintain your collection system properly. Always observe the SAFETY RULES.

KNOW YOUR GRASS CATCHER


READ THIS OPERATION MANUAL AND SAFETY RULES BEFORE ASSEMBLING OR OPERATING YOUR COLLECTION SYSTEM. Compare the illustrations with the carton contents to familiarize yourself with the parts before starting the assembly. Study the operating instructions and safety precautions thoroughly to insure proper functioning of your Grass Catcher and to prevent injury to yourself and others. Save this manual for future reference.


 **WARNING!** THIS CUTTING MACHINE IS CAPABLE OF AMPUTATING HANDS AND FEET AND THROWING OBJECTS. FAILURE TO OBSERVE THE FOLLOWING SAFETY INSTRUCTIONS COULD RESULT IN SERIOUS INJURY OR DEATH.


 **CAUTION!** Grass catcher components are subject to wear, damage and deterioration, which could expose moving parts or allow objects to be thrown. Frequently check components and replace with manufacturer's recommended parts, when necessary.

 **CAUTION!** DO NOT operate mower with grass catcher partially installed.


- Disengage blades and stop engine before leaving mower seat to empty containers, unclogging chutes, etc.
- Close cover before starting.
- Disengage mower blades when crossing driveways or gravel surfaces and other areas where thrown objects could be a hazard.
- DO NOT attempt to vacuum cans or other potentially hazardous projectiles.

 **CAUTION!** The operation of any mower can result in foreign objects thrown into the eyes, which can result in severe eye damage. ALWAYS wear safety glasses or eye shields before starting your mower and while mowing. Standard safety glasses are recommended or a wide vision safety mask for over spectacles.

 **CAUTION!** Do not leave grass in bagger containers. Empty containers after each use and before storing. Failure to do so may cause spontaneous combustion resulting in a fire.

 **CAUTION!** Before assembling grass catcher to mower:

- Set parking brake.
- Place motion control levers in NEUTRAL position.
- Turn ignition key OFF and remove key.
- Make sure the blades and all moving parts have completely stopped.

 **CAUTION!** DO NOT operate mower with grass catcher without front weights installed.

GENERAL INFORMATION

Tips For Improved Bagging

- Follow the mower operation instructions in the Operator Manual.
- When using the grass catcher on a lawn where grass and leaf bagging equipment has not been used previously, thatch and debris that has accumulated for long periods of time is picked up. The amount collected and the total time of operation may be greater than will be experienced with regular use of the grass catcher.
- Always run throttle at full speed when bagging.
- Select a speed low enough to give good mower cutting performance, good quality cut and good bagging performance.
NOTE: It may be necessary to overlap width of cut to suit conditions.
- If grass is extremely tall, it should be mowed twice. The first cut should be at one of the highest settings, the second time to desired height.
- Use the left hand side of mower for trimming.
- Avoid cutting wet grass or in the morning while the dew is still heavy. Grass clippings collected under these conditions tend to be sticky and adhere to the walls of the flow path causing clogging.
- If the grass catcher fails to pick up cut grass or leaves, it is an indication that clogging has occurred in the system or that the grass catcher containers are full.
 - a. Disengage blades, place motion control levers in neutral position.
 - Unlatch and raise cover.
 - Slide out containers and dispose of clippings.
 - Replace containers, close cover, and latch.
 - b. Unlatch chutes and check for clogging.
 - Remove all debris in chute.
 - Reassemble and latch chutes.
- Plastic trash bags (3.0 mil, 30 gallon) can be inserted inside grass catcher containers for ease of debris disposal. To remove the plastic trash bags when full:
 - a. Disengage blades, shift into neutral, engage the parking brake and stop the engine.
 - b. Unlatch and raise cover.
 - c. Remove one container at a time by grasping container handles and pulling toward the rear, off of the tube rails.
 - d. With the container resting on the ground, close and secure the top of the plastic lawn bag.
 - e. Tip the container on its side and slide the filled bag from the container.
 - f. Install a new plastic lawn bag with the edges of the bag draped over upper lip of the Container.
 - g. Repeat for other container.
 - h. Reinstall containers making sure right container overlaps left container at center supports.
 - i. Close cover and secure latches over center support tubes.

General Recommendations

Always observe safety rules when performing any maintenance.

- Before each use check for loose fasteners.
- Clean unit thoroughly after each use.

Blade Care

- For best results mower blades must be kept sharp. Replace bent or damaged blades.
- See instructions in the mower operator manual.

Storage

When grass catcher is to be stored for a period of time, clean it thoroughly, remove all dirt, grass, leaves, etc. Store in a clean, dry place.

SAFETY

General Operation

- **DO NOT** operate mower with grass catcher unless the front weights are installed.
- Read, understand and follow all instructions in the manual and on the machine before starting.
- Keep the machine free of grass, leaves or other debris buildup which can touch hot exhaust/engine parts and burn. Do not allow the mower deck to plow leaves or other debris which can cause buildup to occur.
- Stop engine before removing the grass catcher or unclogging chute.
- Do not operate the mower without either the entire grass catcher or the guard in place. Be aware of the mower discharge direction and do not direct it towards anyone.
- Clear the area of objects such as rocks, stones, toys, wire etc., which could be picked up and thrown by the blades.
- Never leave the machine unattended when the engine is running. Always turn off the blades, set the parking brake, stop the engine and remove the key before leaving the machine.
- Watch out for traffic when operating near or crossing roadways.
- Use extra care when loading and unloading the machine onto a trailer or truck.

Slope Operation

Slopes are a major factor related to loss-of-control and tip-over accidents, which can result in severe injury or death. All slopes require extra caution. If you cannot back up the slope or if you feel uneasy on it, do not mow it.

DO

- Mow up and down slopes (10° Max.), not across.
- Remove obstacles such as rocks, tree limbs, etc.
- Watch for holes, ruts, or bumps. Uneven terrain could overturn the machine. **Tall grass can hide obstacles.**
- Use slow speed. Choose a low speed so that you will not have to stop while on the slope.
- Use extra care with grass catchers or other attachments. These can change the stability of the machine.
- Keep all movement on the slopes **slow and gradual**. Do not make sudden changes in speed or direction.
- Avoid starting or stopping on a slope. If tires lose traction, disengage the blades and proceed slowly **straight** down the slope.

DO NOT

- **Do not** turn on slopes unless necessary, and then, turn slowly and gradually downhill, if possible.
- **Do not** mow near drop-off, ditches, or embankments. The mower could suddenly turn over if a wheel is over the edge of a cliff or ditch, or if an edge caves in.
- **Do not** mow on wet grass. Reduced traction could cause sliding.
- **Do not** try to stabilize the machine by putting your foot on the ground.

Service

- Grass catcher components are subject to wear, damage, and deterioration, which could expose moving parts or allow objects to be thrown. Frequently check components and replace with manufacturer's recommended parts, when necessary.
- The operation of any mower can result in foreign objects thrown into the eyes, which can result in severe eye damage. Always wear safety glasses or eye shields while operating the mower or performing any adjustments or repairs. A wide vision safety mask over spectacles or standard safety glasses are recommended.
- Keep nuts and bolts, especially blade attachment bolts, tight and keep equipment in good condition.
- Never tamper with safety devices. Check regularly for proper operation.
- Keep machine free of grass, leaves, or other debris buildup. Clean oil or fuel spillage. Allow machine to cool before storing.
- Stop and inspect the equipment if you strike an object. Repair, if necessary, before restarting.
- Never make adjustments or repairs with the engine running.
- Mower blades are sharp and can cut. Wrap the blade(s) or wear gloves, and use extra caution when servicing them.
- Check brake operation frequently. Adjust and service as shown in the Operator Manual.

ASSEMBLY

Tools Required

- Wrench or ratchet and socket 7/16"
- Wrench or ratchet and socket 1/2"
- Phillips Head Screwdriver
- Socket 7/8" • Pliers
- Torque Wrench • Hacksaw

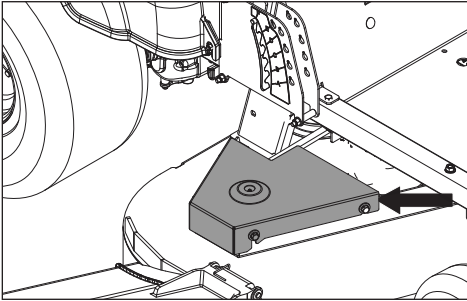
Container Contents

- Blower Assembly
- Drive Pulley
- Belt Shield
- Mounting Brackets
- Bagger Assembly
- Weights
- Belt
- Bag of Hardware

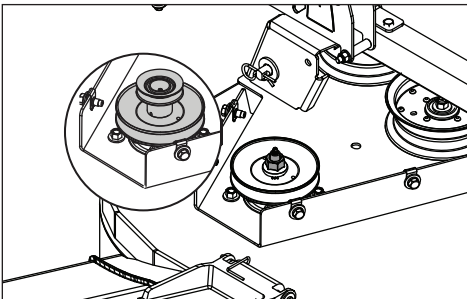
NOTE: When the terms RH (right hand) or LH (left hand) are used, it refers to when the operator is seated on the mower.

Drive Pulley

1. Remove the discharge chute from the deck. (Deck configuration will vary by size and model)
2. Lower deck to the lowest cutting position.
3. Remove the right hand (discharge side) belt cover from the deck.



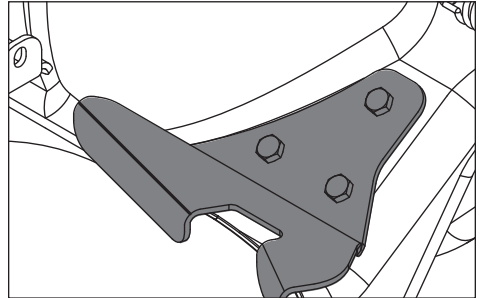
4. Relieve the tension from the deck belt and remove from the center deck pulley. (See Operator Manual if necessary)
5. Remove the nut securing the right hand deck pulley to the spindle.
6. Install drive pulley included in collection system kit on top of the current deck pulley.



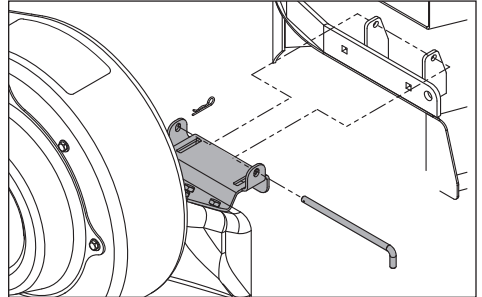
7. Reinstall the nut on the spindle and torque to 55-75 ft/lbs.
8. Reinstall the deck belt.

Blower Assembly

1. Position blower over the discharge tabs on the deck and set blower onto the deck.
2. Be sure the blower is sitting flush against the outside of the deck.



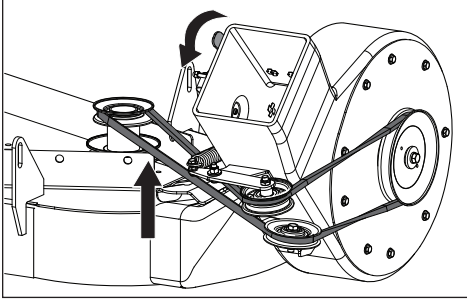
3. Install the front mount bracket to the deck with the clevis pin and hairpin supplied with the kit.



ASSEMBLY

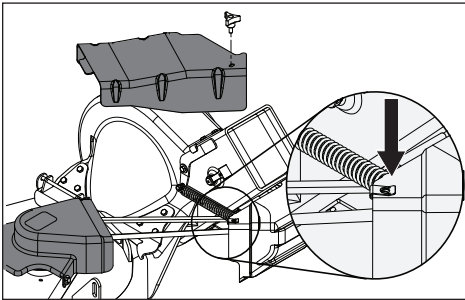
Drive Belt

1. Make sure the tension release lever is forward or disengaged.
2. Place the belt over the pulley on the deck. Refer to illustration for proper routing.
3. Move the tension release arm to the rear and engage in the latch.



Belt Covers

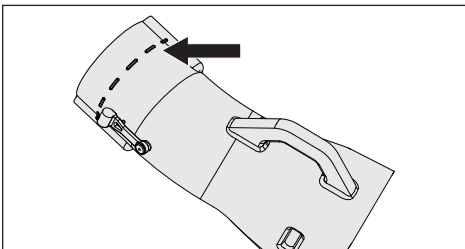
1. Place the deck belt shield on the deck over the drive pulley and secure with hardware removed from steel belt shield.
2. Place retainer on the outer pulley cover.



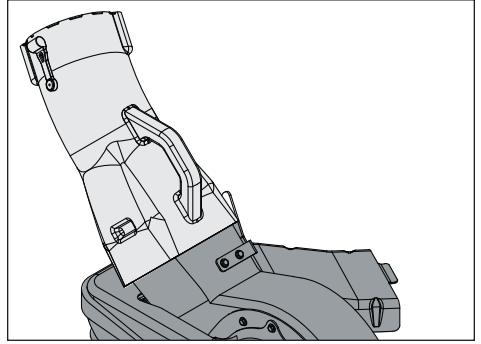
3. Align the tab end of the belt cover into the slot on the deck belt shield and the other end over the end of the outer pulley cover.
4. Secure with knob.

Middle Chute

1. Using the hacksaw, trim along the dashed line.

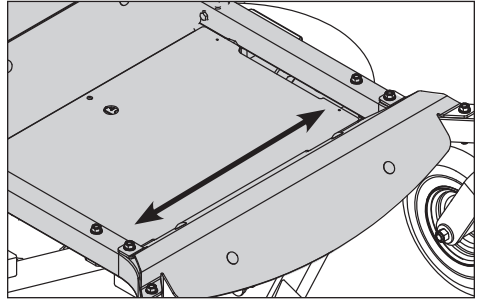


2. Place middle chute over the top end of the blower assembly.
3. Latch middle chute to blower assembly.

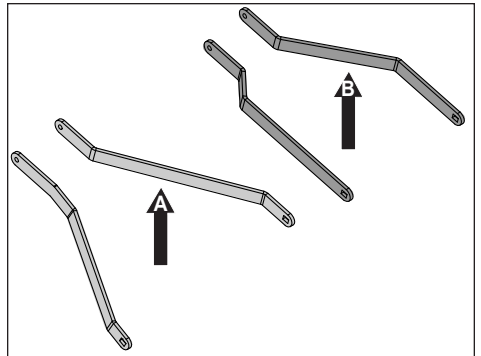


Bagger Mount

1. To select the right support straps to use, measure the mower frame just behind the casters.



For frames measuring 26" use support straps A, for frames measuring 23" use support straps B.



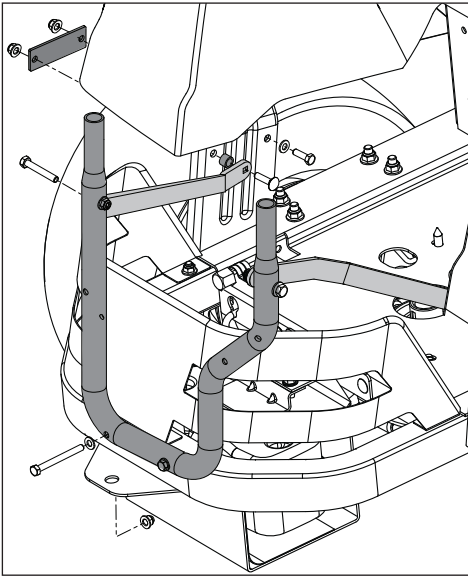
2. Install the bagger mount tube to the rear guard with 5/16-18 x 3-1/4 bolts and flange nuts from kit.
3. Install kit support straps on the outside of the mount tube as shown in the illustration. Using a 5/16-18 x 1-1/4 bolt, attach the front side

ASSEMBLY

of the strap to the fender support, inserting a spacer between the mower and the strap. Do not add flange nut at this time. Place the reinforcement plate to the outside of the fender support. Secure with additional 1-1/4 bolt and fasten both bolts with flange nuts. Repeat steps on opposite side.

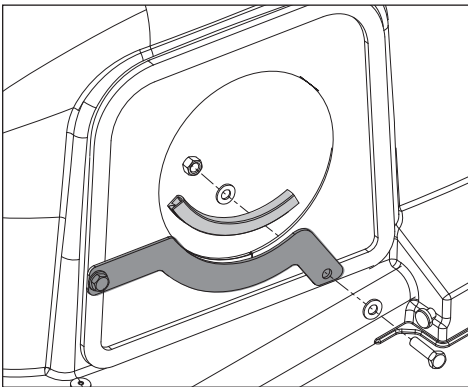
NOTE: The front side of the kit support straps should be on the inside of the mower frame.

4. Tighten all hardware.



Chute Support

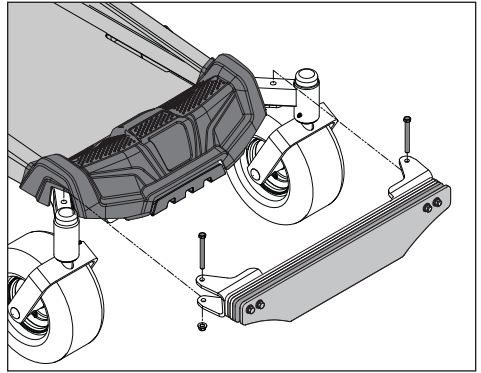
1. Position upper chute support against bagger inlet, flush at outer edges.
2. Using support as a template, drill two 3/8" holes into bagger hood.



3. Secure upper chute support to hood with hex bolts, washers and nyloc nuts.
4. Slip the flex trim over the bottom edge of the chute opening.

Weight Kits

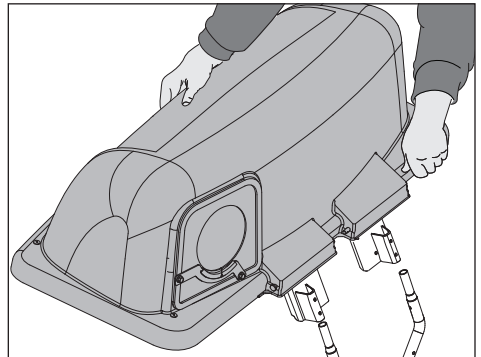
1. Bolt the weight plates to weight brackets using four 3/8-16 x 3 bolts and nuts.
2. Remove the two bolts that attach the footrest assembly to the frame.
3. Slide both weight brackets over the front tube on the frame. Be sure to position the weight assembly in the center of the frame.
4. Attach the weight and footrest assemblies to the frame with two 3/8-16 x 3-1/2 bolts and nuts.



Mounting Cover Assembly

NOTE: Assistance from another person may ease mounting the cover assembly to mower.

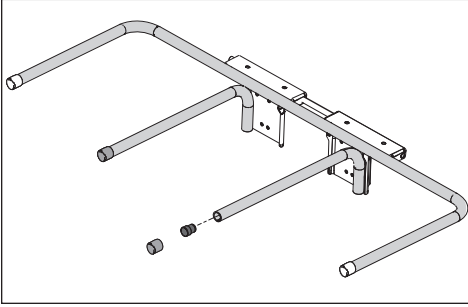
1. Lift and rotate cover to align the cover brackets with support assembly tubes.
2. Slide the cover down over the support tubes until secure.



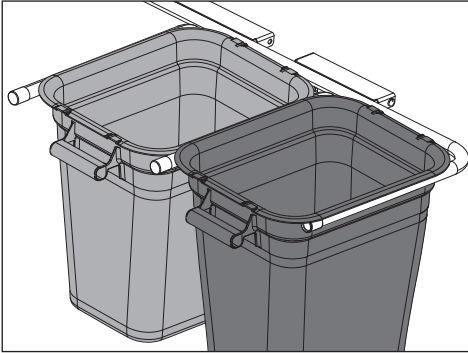
ASSEMBLY

Mounting Containers

1. Remove the end caps from the center two bag support arms. Insert the spacer plugs into the ends of the support tubes. It may be necessary to tap the spacers into place with a hammer or mallet. Replace the plastic end caps back over the spacers.

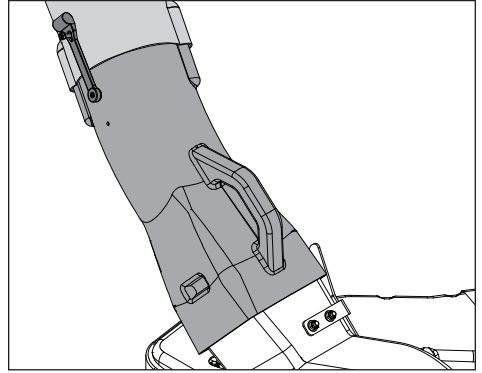


2. Install containers on supports, overlapping at center supports.
3. Close cover and lock latch handles over center support tubes.



Chutes

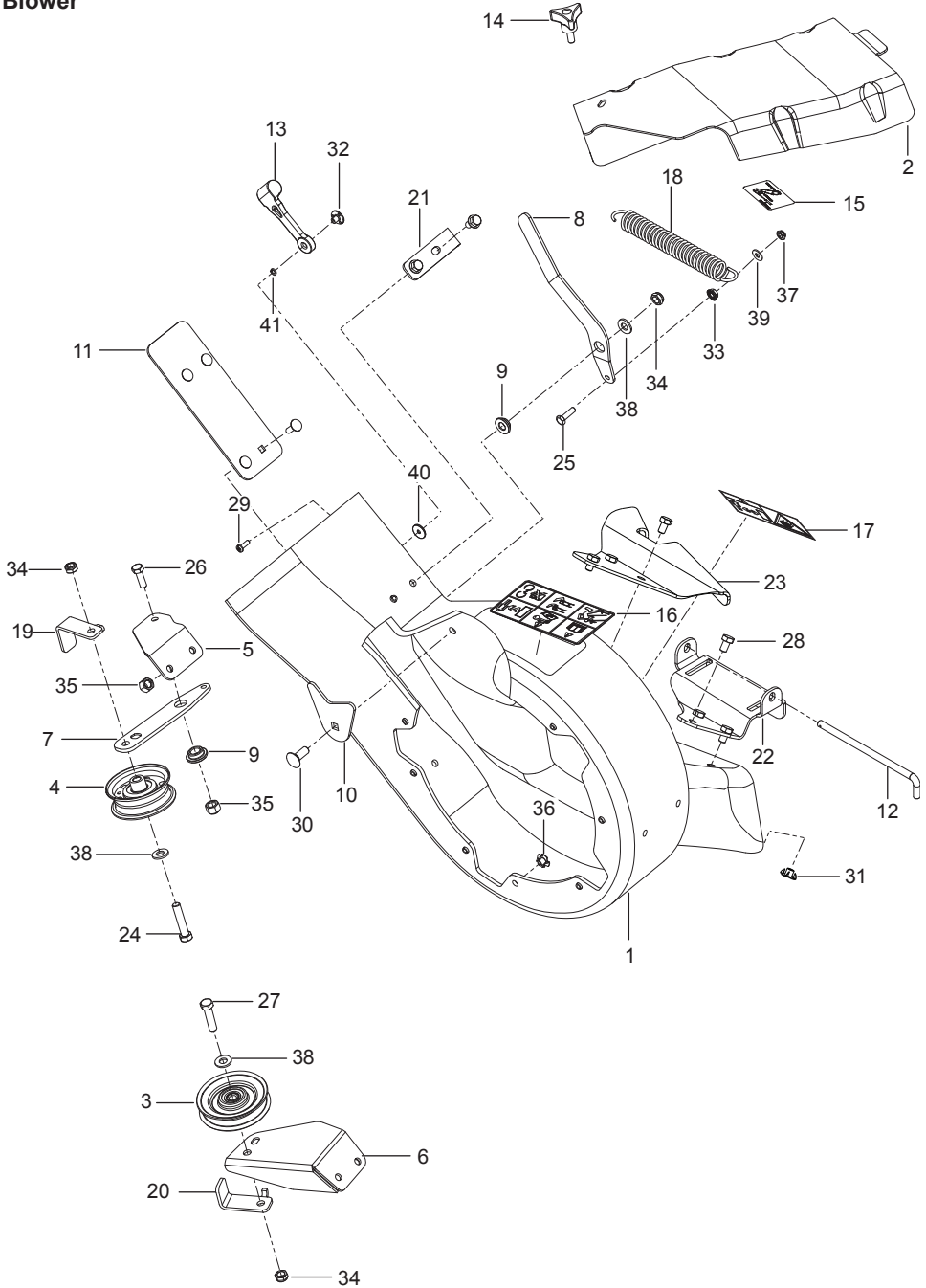
1. Slide upper chute onto middle chute, lining up the middle chute latch and the acorn nut on the upper chute.



2. Stretch the bungee latch up onto the acorn nut.
3. Push the upper chute through the opening in the bagger cover.

REPAIR PARTS

Blower

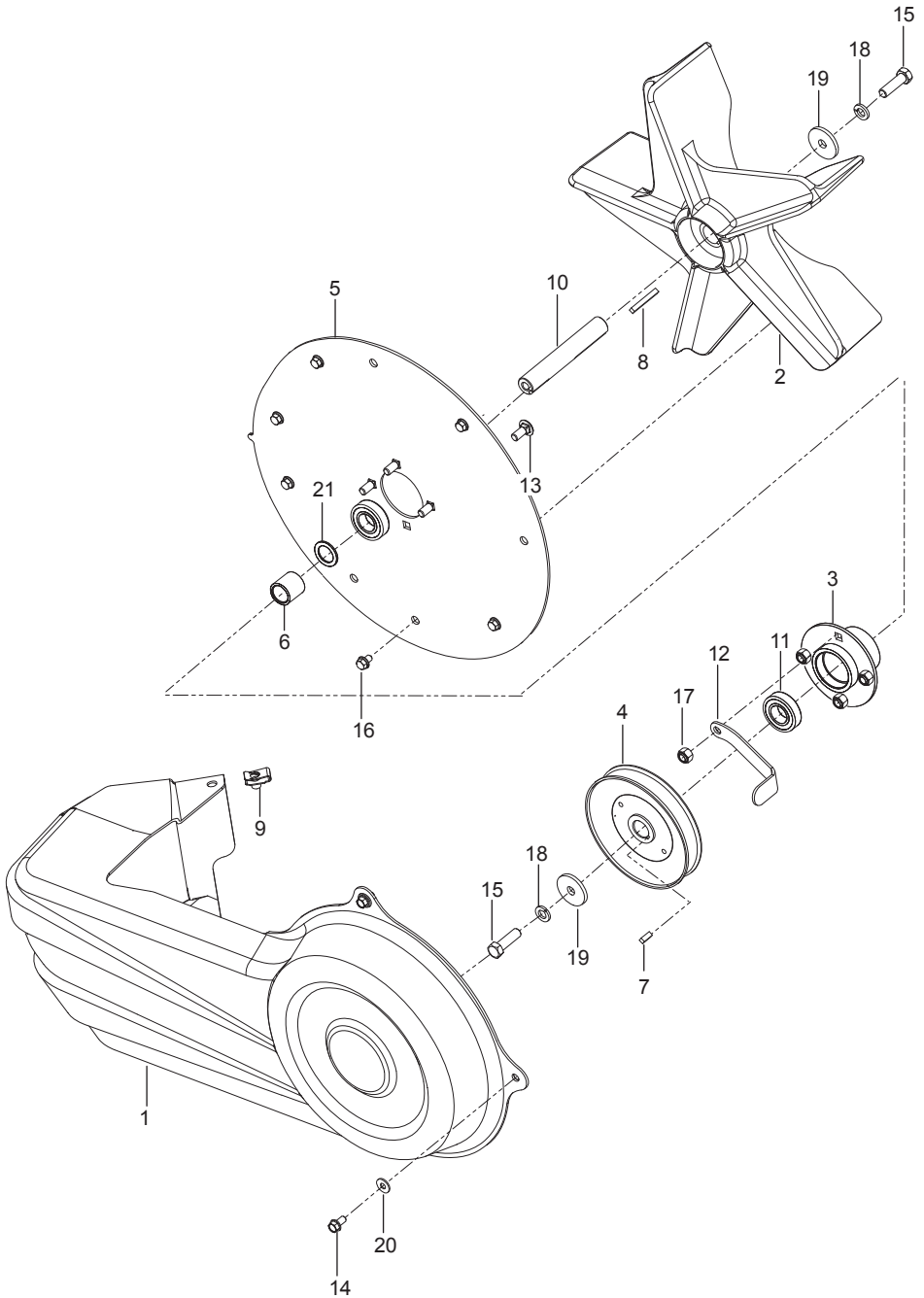


REPAIR PARTS

Ref.	Part No.	Qty	Description
1.	539 13 03-44	1	Housing w/ Safety Decals
2.	539 13 03-09	1	Cover, Belt
3.	539 11 36-83	1	Pulley, Idler
4.	539 13 03-24	1	Pulley
5.	579 13 74-02	1	Mount, Upper Blk
6.	579 13 75-02	1	Mount, Lower Blk
7.	579 13 73-02	1	Arm, Idler
8.	539 13 03-38	1	Arm, Tension
9.	539 13 03-01	2	Bushing
10.	539 13 21-24	1	Plate, Backing
11.	539 13 21-22	1	Plate, Backing
12.	539 13 03-17	1	Pin, Retention
13.	539 10 80-88	1	Latch, Hood
14.	539 10 44-11	1	Knob W/ Stud
15.	539 13 03-49	1	Decal, Belt Routing
16.	539 10 57-85	1	Decal, Warning
17.	539 10 67-41	1	Decal, Severing
18.	539 10 19-77	1	Spring, Traction
19.	579 13 76-02	1	Keeper, Belt Rear Blk
20.	579 13 77-02	1	Keeper
21.	539 13 03-48	1	Keeper
22.	539 13 03-39	1	Bracket, Mount
23.	539 13 03-40	1	Bracket, Mount
24.	539 97 69-49	1	Bolt 3/8-16 x 1-3/4 Hex Head
25.	874 78 04-14	1	Bolt 1/4-20 x 7/8 Hex Head
26.	874 78 05-16	1	Bolt 5/16-18 x 1 Hex Head
27.	874 78 06-24	1	Bolt 3/8-16 x 1-1/2 Hex Head
28.	874 78 05-08	6	Bolt 5/16-18 x 1/2 Hex Head
29.	818 02 10-08	1	Screw #10-24 x 1/2 Machine
30.	872 14 06-08	1	Bolt 3/8-16 x 1 Round Head Square Neck
31.	539 13 03-13	6	Nut 5/16-18 Tee
32.	539 10 80-89	1	Weldnut, Plated #10-24
33.	532 43 81-30	1	Nut 1/4-20 Hex Flange Lock
34.	539 20 02-82	3	Nut 3/8-16 Hex Thin Jam Nyloc
35.	873 80 05-00	2	Nut 5/16-18 Hex Nyloc
36.	539 13 03-14	9	Nut 1/4-20 Tee
37.	539 10 81-20	1	Nut 1/4-20 Hex Thin Nyloc
38.	819 13 13-16	3	Washer 3/8 SAE Flat
39.	819 09 10-16	1	Washer 1/4 SAE Flat
40.	539 10 80-84	1	Washer 3/16 x 3/4 x 16 Gauge
41.	539 10 95-52	1	Washer 3/16 Lock

REPAIR PARTS

Blower

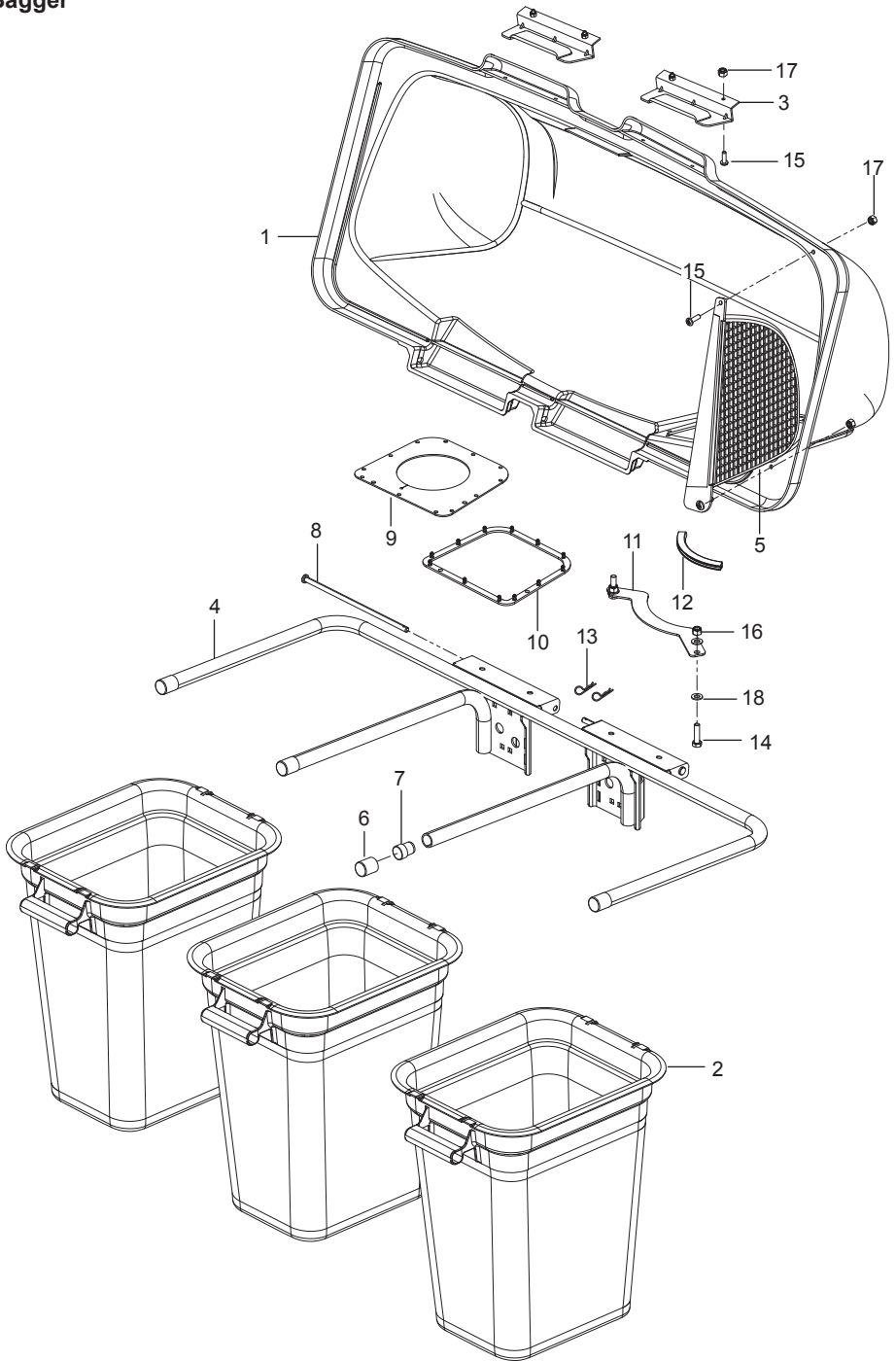


REPAIR PARTS

Ref.	Part No.	Qty	Description
1.	539 13 02-93	1	Cover, Belt
2.	539 13 02-92	1	Impeller
3.	539 13 02-95	1	Hub
4.	579 15 08-02	1	Pulley, Idler
5.	539 13 03-41	1	Plate, Outer
6.	539 13 03-23	1	Spacer
7.	539 11 56-67	1	Key 3/16 x 1/2
8.	539 12 52-29	1	Key 1-1/2
9.	539 10 47-63	1	Retainer, U Type
10.	539 13 03-16	1	Shaft, Impeller
11.	539 13 02-96	2	Bearing
12.	539 13 10-85	1	Keeper, Belt Outer
13.	872 14 05-06	4	Bolt 5/16-18 x 3/4 Round Head Square Neck
14.	817 49 04-08	3	Screw 1/4-20 x 1/2 Hex Washer Head Self Tap
15.	532 85 08-57	2	Bolt 3/8-24 x 1-1/4 Hex Head Grade 8
16.	817 49 04-06	8	Screw 1/4-20 x 3/8 Hex Washer Head Self Tap
17.	873 80 05-00	7	Nut 5/16-18 Hex Nyloc
18.	810 03 06-00	2	Washer 3/8 Slotted
19.	532 14 02-96	2	Washer, Hardened
20.	819 09 10-16	3	Washer 1/4 SAE Flat
21.	539 91 09-35	1	Washer

REPAIR PARTS

Bagger

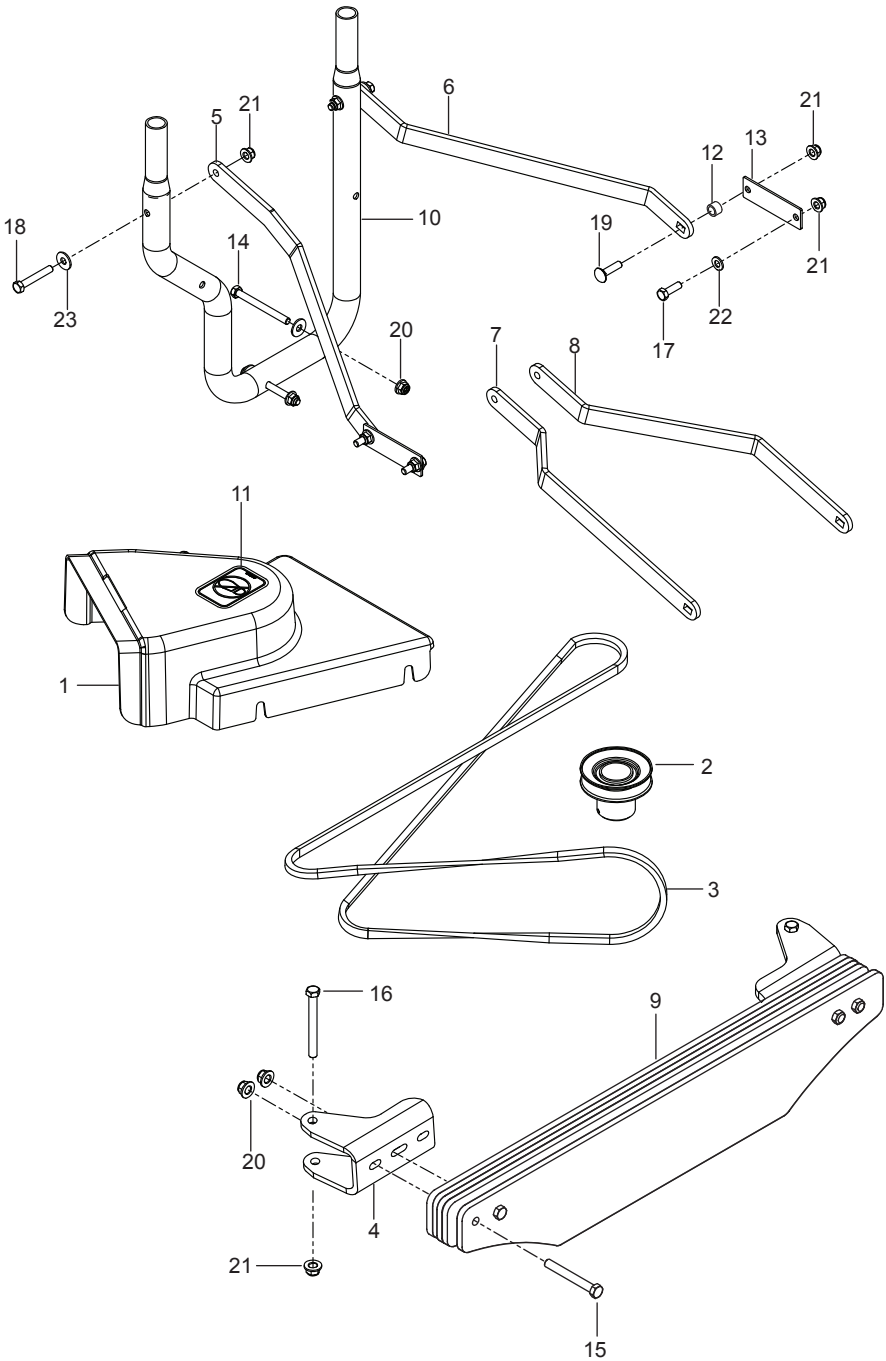


REPAIR PARTS

Ref.	Part No.	Qty	Description
1.	532 19 53-73	1	Cover
2.	532 40 02-26	3	Container, Soft Bag
3.	532 13 08-95	2	Handle, Bagger Cover
4.	539 10 80-98	1	Frame, Bagger
5.	532 19 27-09	1	Screen, Cover
6.	539 10 80-97	4	Cap, Tubing End
7.	522 80 13-01	2	Plug, Spacer
8.	532 19 27-86	2	Pin, Hinge
9.	532 19 25-50	1	Seal, Cover
10.	532 19 26-03	1	Gasket, Cover
11.	539 11 02-34	1	Support, Chute
12.	539 11 22-94	1	Trim, Flex
13.	532 00 49-39	2	Hair Pin
14.	874 78 05-20	2	Bolt 5/16-18 x 1-1/4 Hex Head
15.	539 97 69-52	6	Screw #10-24 x 5/8
16.	539 11 28-99	2	Nut 5/16-18 Hex Flange Nyloc
17.	539 97 69-77	6	Nut #10-24 Crown Lock
18.	819 11 11-16	4	Washer 5/16 SAE
Not Shown			
	539 97 68-59	1	Bag, Plastic 12" x 16 x 4 Mil

REPAIR PARTS

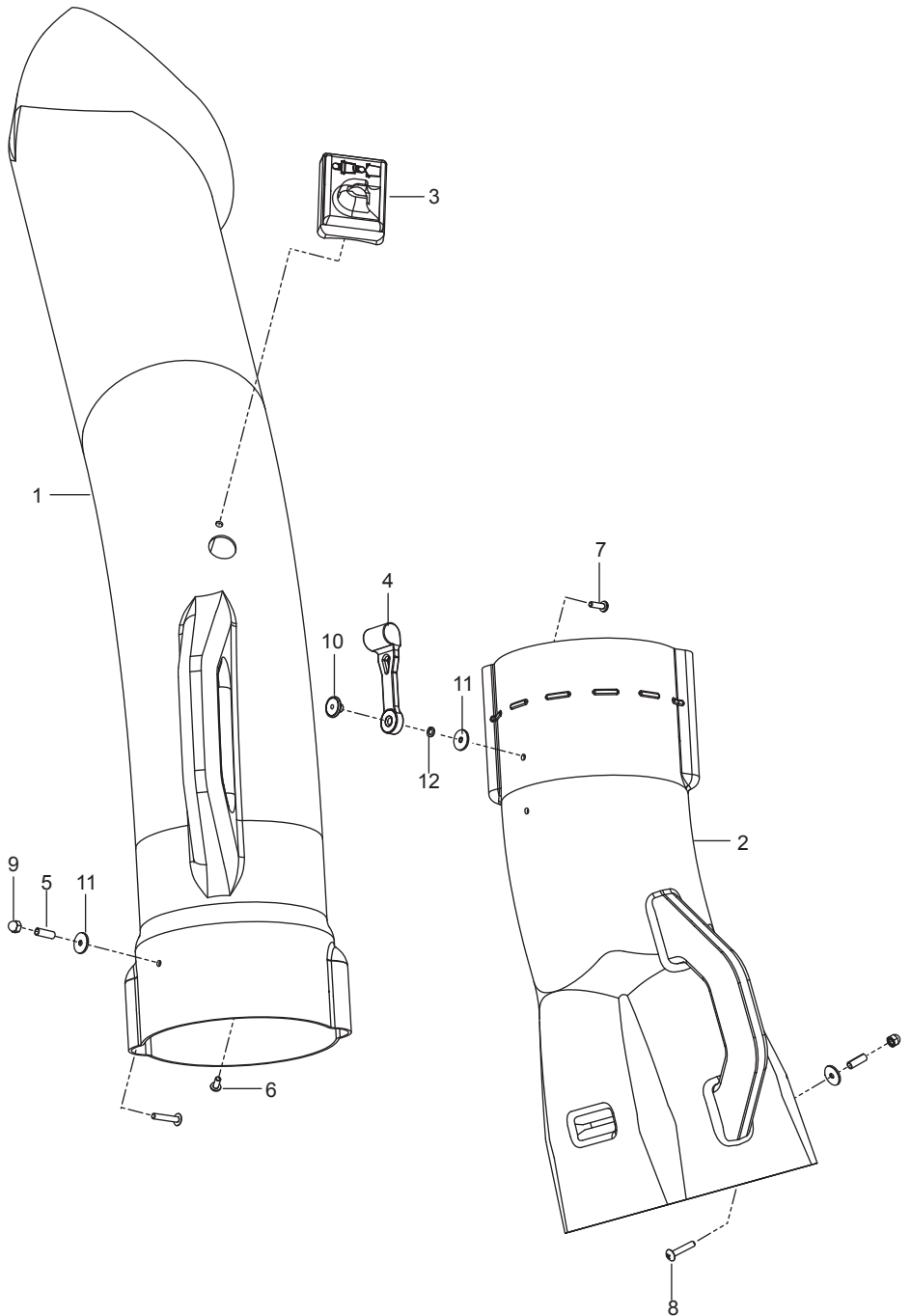
Mounts, Guarding, Weights



REPAIR PARTS

Ref.	Part No.	Qty	Description
1.	539 13 03-06	1	Shield, Belt, 48"
2.	539 13 03-19	1	Pulley, 48"
3.	539 13 03-47	1	Belt
4.	587 34 76-02	2	Bracket, Weight
5.	587 34 79-02	1	Strap, Right 23"
6.	587 34 78-02	1	Strap, Left 23"
7.	523 08 49-02	1	Strap, Right 26"
8.	523 08 47-02	1	Strap, Left 26"
9.	539 11 32-32	5	Plate, Weight
10.	539 13 10-91	1	Tube, Mount Bk
11.	539 10 57-43	1	Decal, No Step
12.	579 61 33-01	1	Spacer
13.	523 11 28-02	2	Plate, Reinforcement
14.	539 10 82-71	2	Bolt 3/8-16 x 3-1/2 Hex Head
15.	874 78 06-48	4	Bolt 3/8-16 x 3 Hex Head
16.	539 10 15-20	2	Bolt 5/16-18 x 3-1/4 Hex Head
17.	874 78 05-16	2	Bolt 5/16-18 x 1 Hex Head
18.	874 78 05-32	2	Bolt 5/16-18 x 2 Hex Head
19.	539 10 04-72	2	Bolt 5/16-18 x 1-1/4 Round Head Square Neck
20.	521 96 65-01	6	Nut 3/8-16 Hex Flange Nyloc
21.	539 11 28-99	6	Nut 5/16-18 Hex Flange Nyloc
22.	819 11 11-16	2	Washer 5/16 SAE Flat
23.	819 12 14-14	4	Washer 5/16 Std Flat

REPAIR PARTS



REPAIR PARTS

Ref.	Part No.	Qty	Description
1.	522 73 92-01	1	Chute, Upper
2.	539 13 02-94	1	Chute, Middle
3.	539 10 80-82	1	Indicator, Bag Dump
4.	539 10 80-88	1	Latch, Hood
5.	539 10 80-85	2	Spacer, Split
6.	818 02 10-08	1	Screw #10-14 x 1/2
7.	871 08 10-10	1	Screw #10-24 x 5/8
8.	532 18 71-75	2	Screw #10-24 x 1-1/8
9.	539 10 80-86	2	Nut #10-24 Acorn
10.	539 10 80-89	1	Weld Nut, Plated
11.	539 10 80-84	3	Washer 3/16 x 3/4 x 16 Gauge
12.	539 10 95-52	1	Washer 3/16 Lock

115 74 18-27 Rev B
2015-01-15