

ILLUSTRATED PARTS LIST

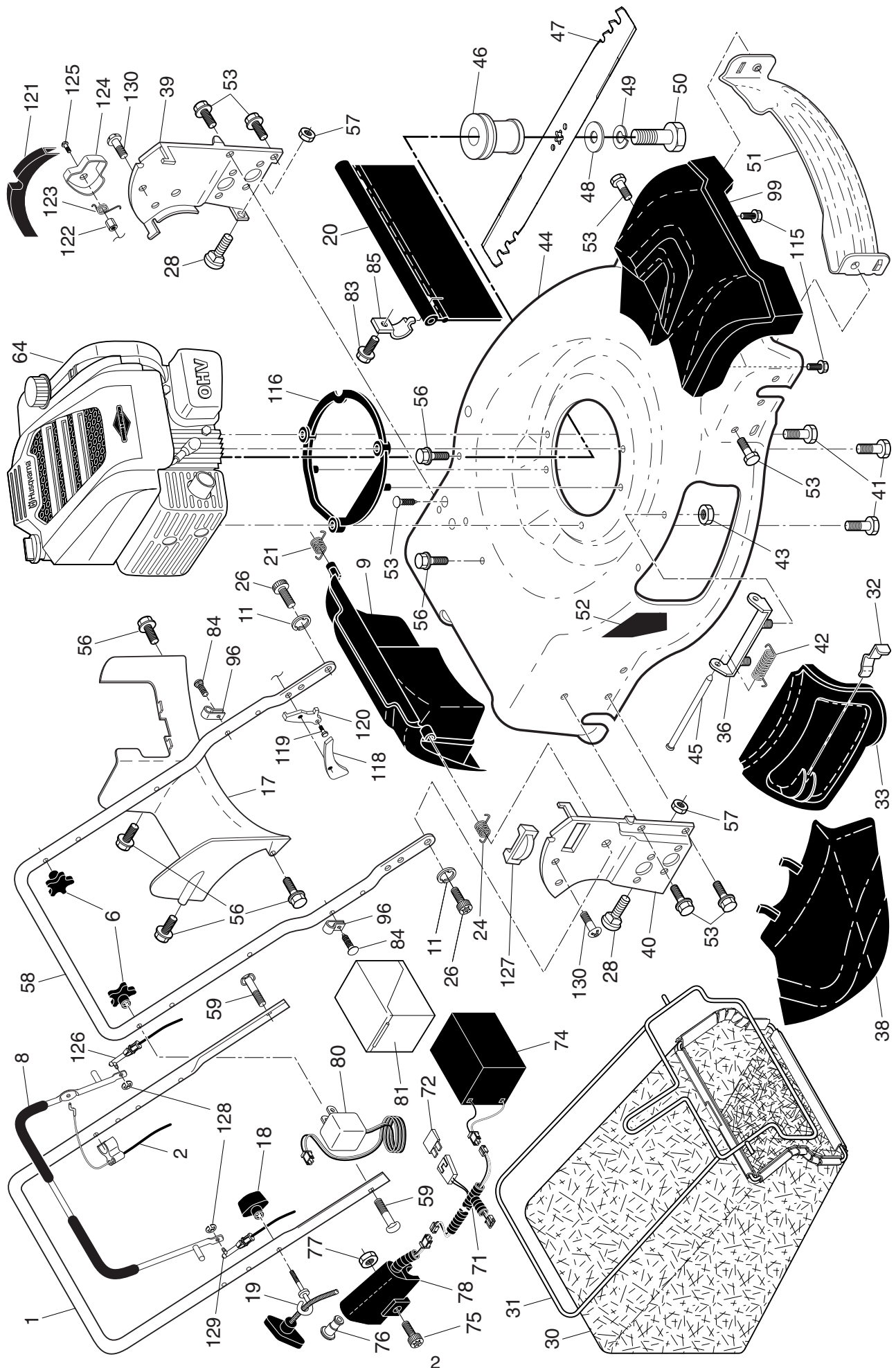


**ROTARY LAWN MOWER**

**MODEL NUMBER: HU725AWDEX**

**MFG. ID. NUMBER: 96143012400**

**HUSQVARNA ROTARY LAWN MOWER - MODEL NUMBER HU725AWDEX (MFG. ID. NUMBER 96143012400)**

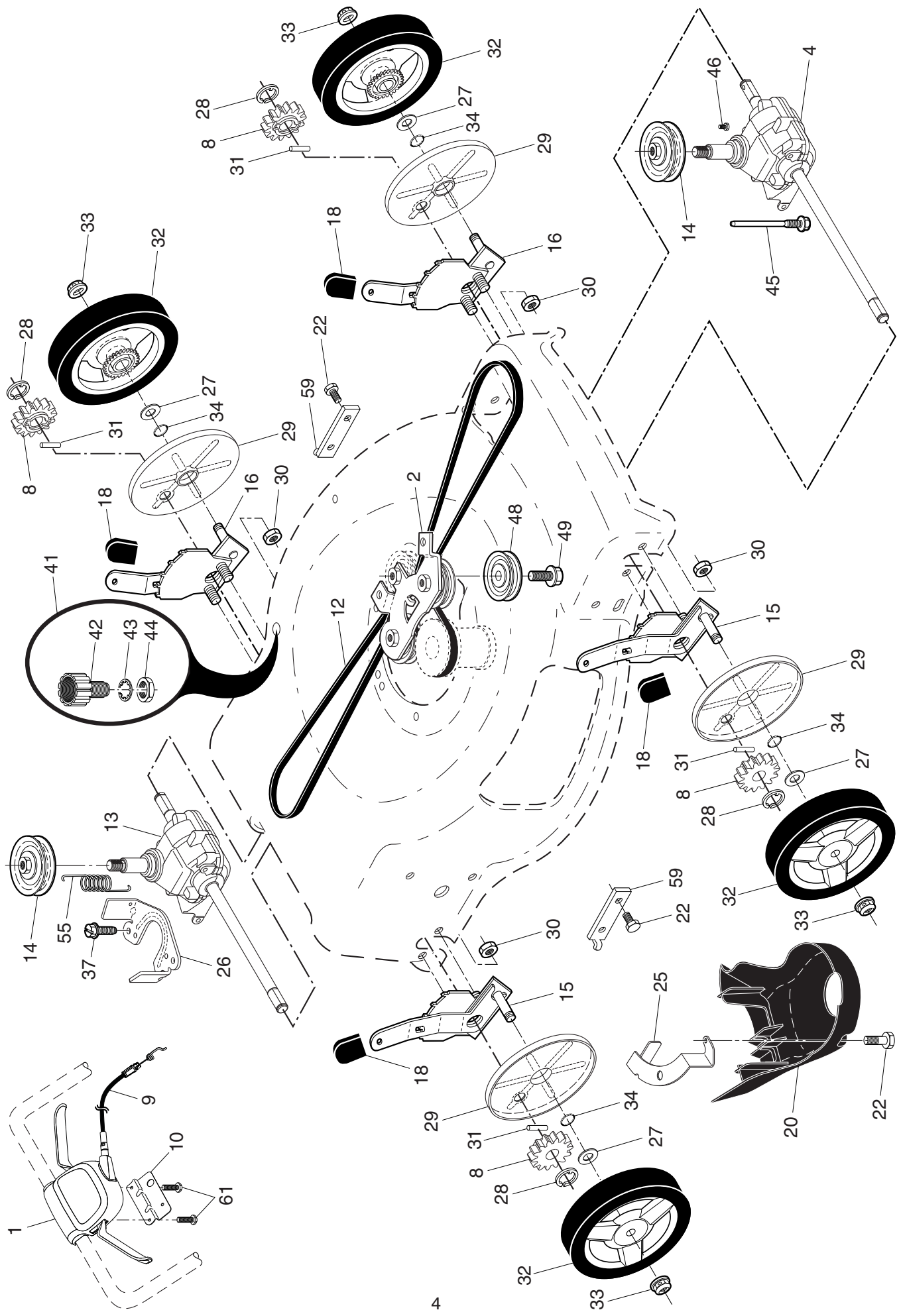


# HUSQVARNA ROTARY LAWN MOWER - MODEL NUMBER HU725AWDEX (MFG. ID. NUMBER 96143012400)

KEY NO.	PART NO.	DESCRIPTION	KEY NO.	PART NO.	DESCRIPTION	KEY NO.	PART NO.	DESCRIPTION
1	580 63 87-06	Upper Handle Assembly	53	817 00 05-10	Screw	118	586 80 86-01	Cover, EZ Store,
2	532 44 03-86	Cable, Engine Zone Control	56	817 41 13-12	Screw, Hex Washer Head #13 x 3/4			Inside, LH (shown)
6	532 18 23-98	Handle Knob						Cover, EZ Store,
8	585 25 18-06	Control Bar	57	532 15 53-77	Nut, Hex			Inside, RH
9	585 84 76-04	Rear Door Assembly	58	585 25 07-02	Handle, Lower			(not shown)
11	579 48 28-01	E-Ring, Door/Handle Pivot	59	532 19 15-74	Bolt, Handle	119	585 48 76-01	Bolt, Pawl
17	581 78 21-01	Rear Baffle	64	- - -	Engine, Briggs & Stratton, Model Number 104M02-0073-F1	120	585 25 09-01	Pawl, LH (shown)
18	581 91 26-01	T-Knob			(For engine service and replacement parts, call Briggs & Stratton at 1-800-233-3723)	121	585 25 10-01	Pawl, RH (not shown)
19	581 90 21-01	Rope Guide						Bracket, Grassbag, LH (shown)
20	532 44 45-01	Rear Skirt						LH (shown)
21	532 41 99-49	Spring, Rear Door, LH, Black						Bracket, Grassbag, RH (not shown)
24	532 41 99-48	Spring, Rear Door, RH, Grey						Nut, Hex, M6
26	532 41 99-45	Screw, Rear Door/Handle Pivot						Spring, Torsion, LH (shown)
28	586 21 25-01	Bolt, Carriage 5/16-18 x 5/8	71	587 93 44-01	Wiring Harness	122	585 48 77-01	Nut, Hex, M6
30	580 94 34-08	Grassbag	72	532 42 59-37	Fuse, 40 Amp	123	585 48 83-01	Spring, Torsion, LH (shown)
31	585 05 47-02	Frame, Grass Catcher	74	532 43 15-84	Battery			Spring, Torsion, RH (not shown)
32	532 44 11-92	Latch, Mulcher Door	75	532 44 66-94	Bolt M6 x 40			Cover, EZ Store,
33	532 41 99-27	Mulcher Door	76	580 91 52-02	Starter Button	124	586 79 44-01	Outside, LH (shown)
36	532 17 57-35	Bracket, Hinge	77	532 44 66-95	Nut, Hex M6			Cover, EZ Store,
38	532 42 61-29	Discharge Deflector	78	587 93 43-01	Electric Start Assembly (Includes Switch and Switch Housing)			Outside, RH (not shown)
39	585 25 04-02	Handle Bracket, LH						Screw, Pan Head, M6
40	585 25 03-02	Handle Bracket, RH	80	587 00 71-01	Charger, Battery	125	585 54 79-01	Cable, EZ Store, LH
41	532 85 09-99	Screw, Dogpoint 3/8-16 x 1-1/8	81	585 15 24-02	Box, Battery	126	585 25 16-01	Lift Assembly,
42	532 19 30-00	Spring, Hinge	83	532 75 00-97	Screw, Hex Washer Head	127	585 25 24-01	Rear Door
43	532 43 81-30	Nut, Hex	84	532 42 81-24	Fastener, Push			E-Ring
44	581 70 83-54	Kit, Lawn Mower Housing	85	532 43 45-30	Mounting Bracket, Rear Skirt	128	585 98 47-01	Cable, EZ Store, RH
45	532 17 56-50	Rod, Hinge				129	585 25 17-05	Screw
46	581 65 09-01	Blade Adapter / Pulley	96	532 19 79-91	Clip, Cable	130	532 14 18-41	Operator's Manual, English / Spanish
47	587 19 96-01	Blade, 22"	99	585 66 87-01	Front Shroud Assembly	- -	115 86 41-96	Operator's Manual, French
48	532 85 10-74	Washer, Hardened	104	587 60 54-02	Shroud, Engine			Operator's Manual, Portuguese
49	532 85 02-63	Washer, Helical	105	587 61 28-01	Screw, Engine Shroud			
50	532 17 96-17	Bolt, Hex Head, Grade 8 3/8-24 x 1-3/8	115	581 33 00-01	Screw			
51	532 43 05-99	Front Baffle	116	581 74 56-01	Spacer, Engine			
52	532 40 47-63	Decal, Warning, Cut Finger						

**NOTE:** All component dimensions given in U.S. inches. 1 inch = 25.4 mm. **IMPORTANT:** Use only Original Equipment Manufacturer (O.E.M.) replacement parts. Failure to do so could be hazardous, damage your lawn mower and void your warranty.

**HUSQVARNA ROTARY LAWN MOWER - MODEL NUMBER HU725AWDEX (MFG. ID. NUMBER 96143012400)**



# HUSQVARNA ROTARY LAWN MOWER - MODEL NUMBER HU725AWDEX (MFG. ID. NUMBER 96143012400)

KEY NO.	PART NO.	DESCRIPTION	KEY NO.	PART NO.	DESCRIPTION
1	501 40 75-05	Drive Control Assembly (Includes Cable)	28	812 00 00-58	E-Ring 7/16
2	586 07 28-02	Mounting Bracket, Idler Pulleys	29	581 84 04-01	Cover, Dust, Wheel
4	588 48 00-01	Gearcase Assembly, Front, Complete	30	532 43 81-30	Nut, Hex
8	532 40 48-35	Pinion	31	532 40 48-45	Pawl, Drive
9	581 95 21-01	Cable, Drive	32	580 36 53-01	Wheel & Tire Assembly
10	587 24 93-02	Mounting Bracket, Drive Control	33	532 40 91-48	Nut, Flangelock 3/8-16
12	580 36 46-03	Belt, Drive	34	532 19 74-80	O-Ring
13	581 68 08-01	Gearcase Assembly, Rear, Complete	37	532 16 34-09	Screw, Hex Washer Head #13 x 3/4
14	586 96 30-01	Pulley, Drive	41	532 42 11-14	Kit, Water Washout Assembly
15	581 49 79-08	Wheel Adjuster Assembly, RH	42	532 41 97-35	Fitting, Water Washout
16	581 49 79-07	Wheel Adjuster Assembly, LH	43	532 41 55-85	Washer, Lock, Internal Tooth
18	532 70 10-37	Knob, Wheel Adjuster	44	532 41 55-86	Locknut, Hex, with O-Ring
20	580 80 69-01	Debris Shield	45	587 43 82-01	Belt Keeper, Gearcase, Front
22	817 00 05-10	Screw, Hex Head 1/4-20	46	584 29 94-01	Screw, Hi-Lo Thread 5/16 x 1
25	532 42 60-65	Mounting Bracket, Debris Shield	48	587 97 30-01	Pulley Assembly, Idler
26	581 15 25-02	Belt Keeper, Gearcase, Rear	49	581 33 45-01	Screw, Hi-Lo Thread #12 x 5/8
27	532 06 77-25	Washer, Flat	55	581 35 13-01	Spring, Tension
			59	532 44 21-13	Support Bracket
			61	532 18 16-98	Screw

**NOTE:** All component dimensions given in U.S. inches. 1 inch = 25.4 mm. **IMPORTANT:** Use only Original Equipment Manufacturer (O.E.M.) replacement parts. Failure to do so could be hazardous, damage your lawn mower and void your warranty.