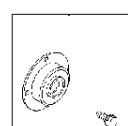
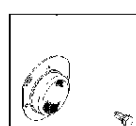
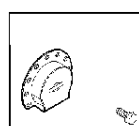
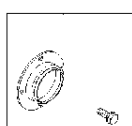
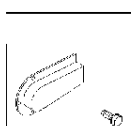
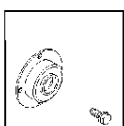
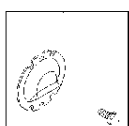
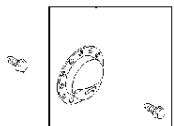
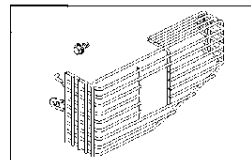
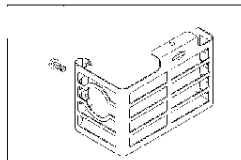
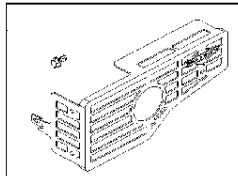
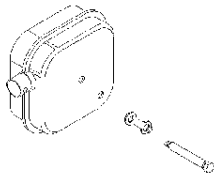
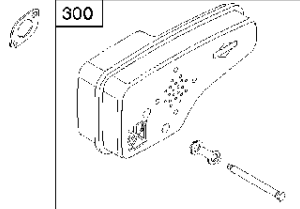
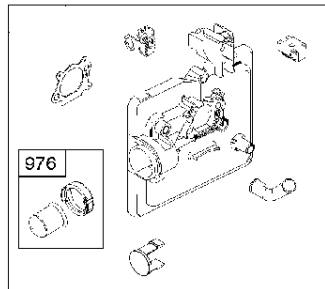
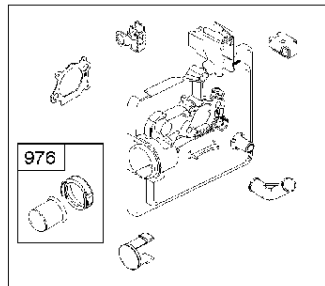
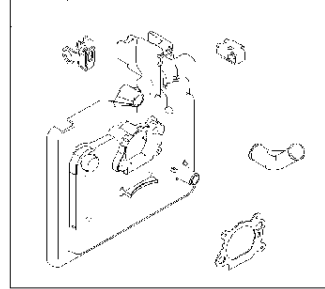
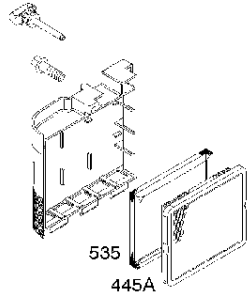




SPARE PARTS LIST

ENGINES & TRANSMISSIONS

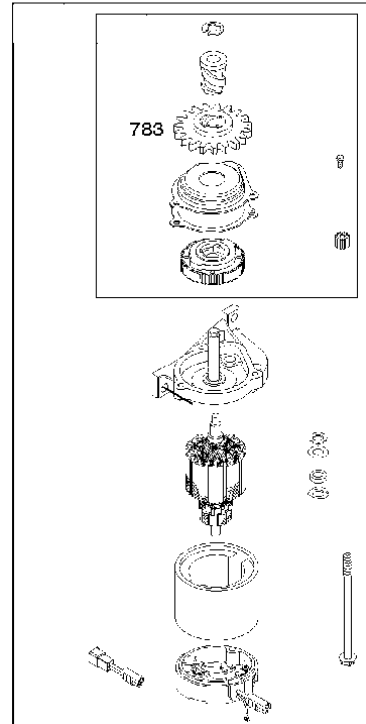
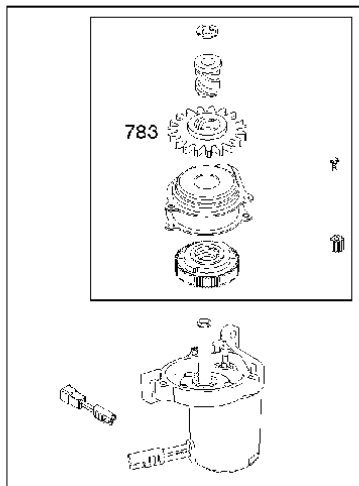
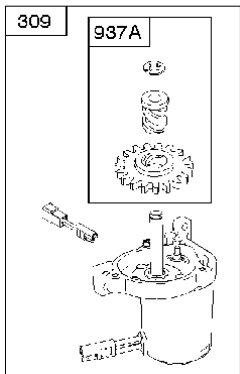
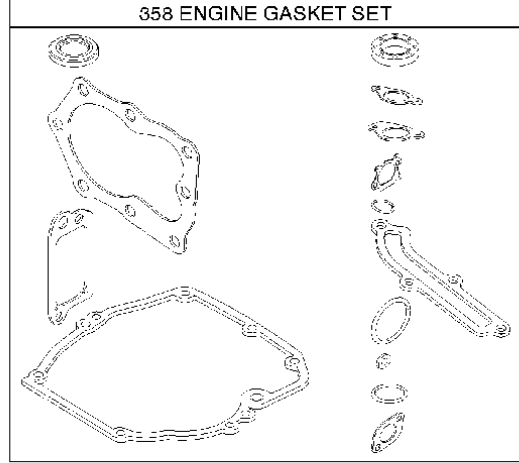
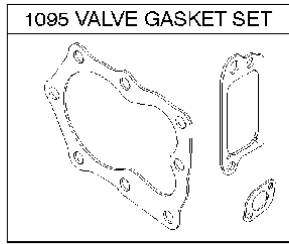
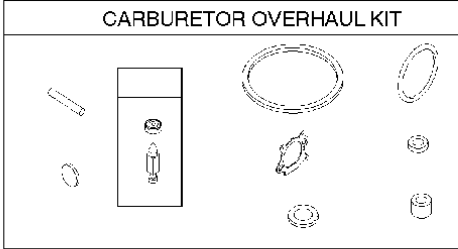
BRIGGS & STRATTON ENGINES,
122T025045H2, 2017-01



Air filter

BRIGGS & STRATTON ENGINES, 122T025045H2, 2017-01

Ref	Part No	Description	Remark	QTY KIT
291	582 31 28-62	THERMOSTAT	593208	1
300	589 66 98-38	MUFFLER	593819	1
445A	585 39 02-01	AIR FILTER	491588S	1
535	585 39 03-01	PREFILTER	493537S	1
976	589 66 98-86	PURGE	694395	1
N/A	589 66 98-08	FILTER	Pre, Workshop package, 4147	5
N/A	589 66 98-01	AIR FILTER	Workshop package, 4101	5
N/A	589 66 98-98	SERVICE KIT	Tune up kit, Workshop package, 992233	1



Carburetor

BRIGGS & STRATTON ENGINES, 122T025045H2, 2017-01

Ref	Part No	Description	Remark	QTY KIT
309	585 39 25-01	ELECTRIC STARTER	799045	1
358	585 39 16-01	GASKET KIT	590508	1
783	584 95 97-01	GEAR	795099	1
937A	585 35 58-01	GEAR	799420	1
1095	585 39 15-01	GASKET KIT	590507	1

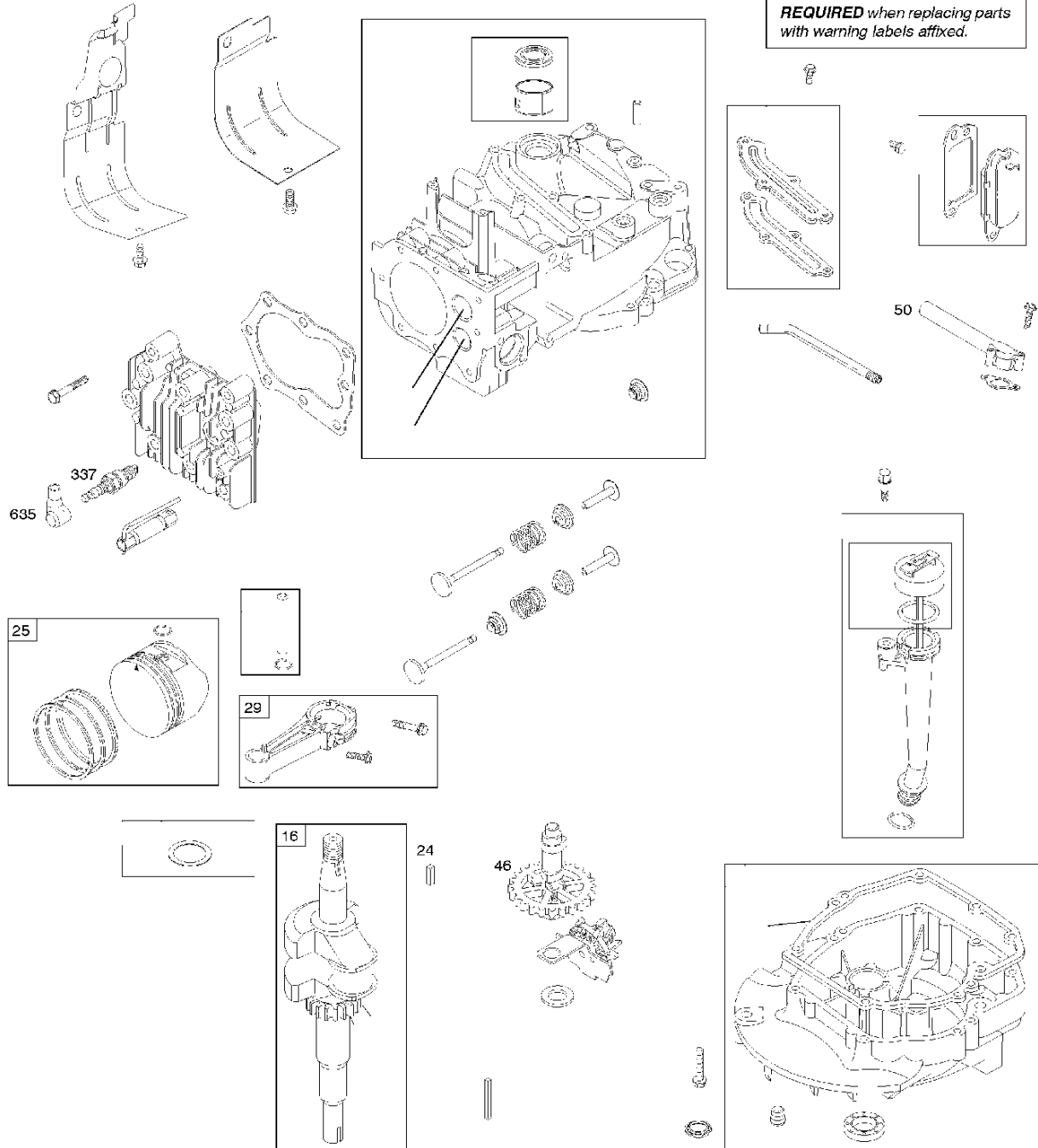
OPERATOR'S MANUAL

REPAIR MANUAL

WARNING LABEL

WARNING
1. Read and understand the instructions before attempting to perform any maintenance or repair work.
2. Disconnect the spark plug wire from the spark plug before attempting to start the engine.
3. Do not touch the engine or any of its parts when the engine is running or immediately after the engine has stopped.
4. Do not use any tools or equipment that are not recommended by the manufacturer.
5. Do not use any fluids or lubricants that are not recommended by the manufacturer.

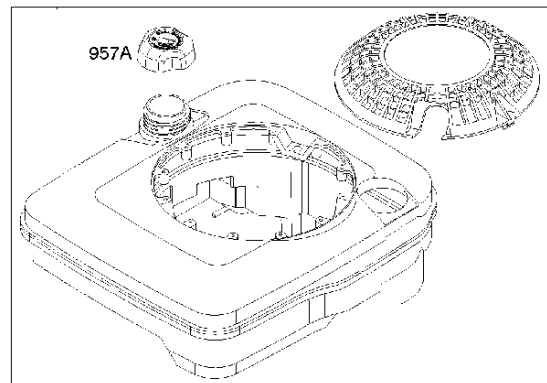
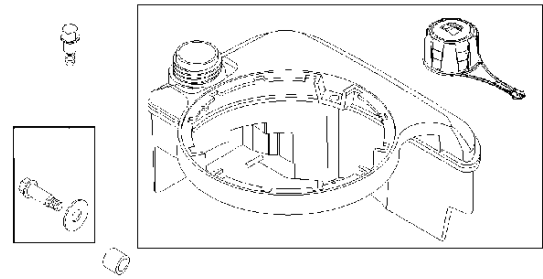
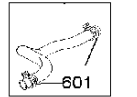
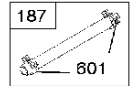
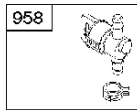
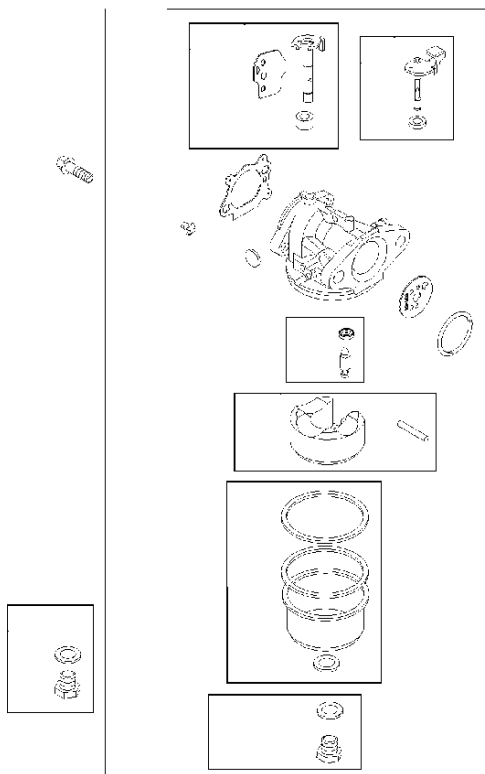
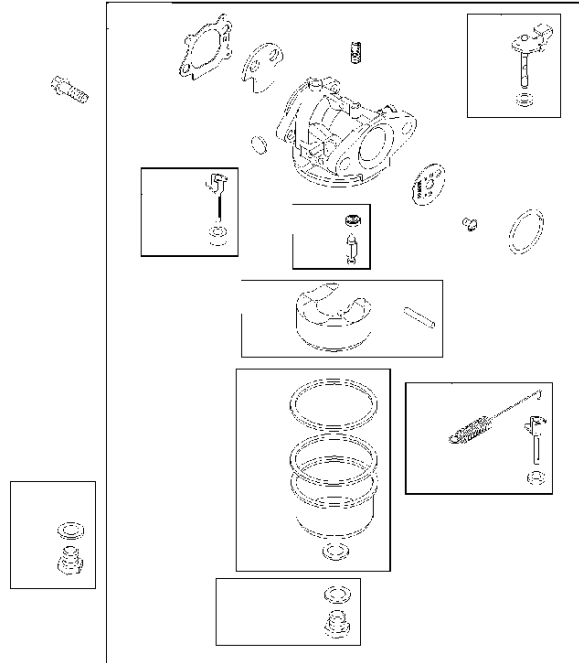
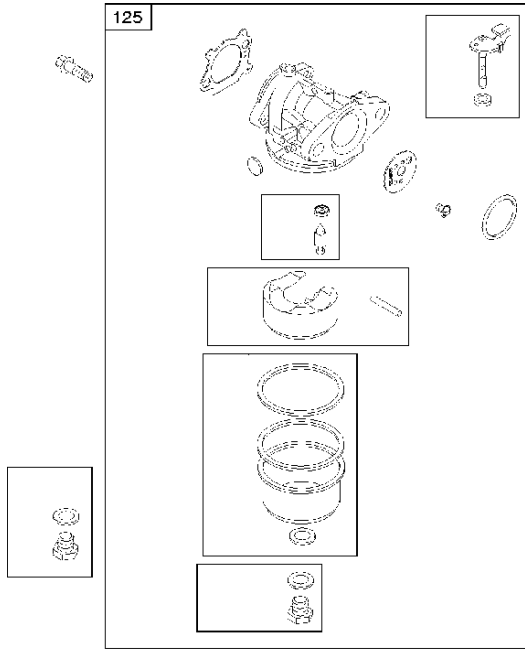
REQUIRED when replacing parts with warning labels affixed.



Cylinder

BRIGGS & STRATTON ENGINES, 122T025045H2, 2017-01

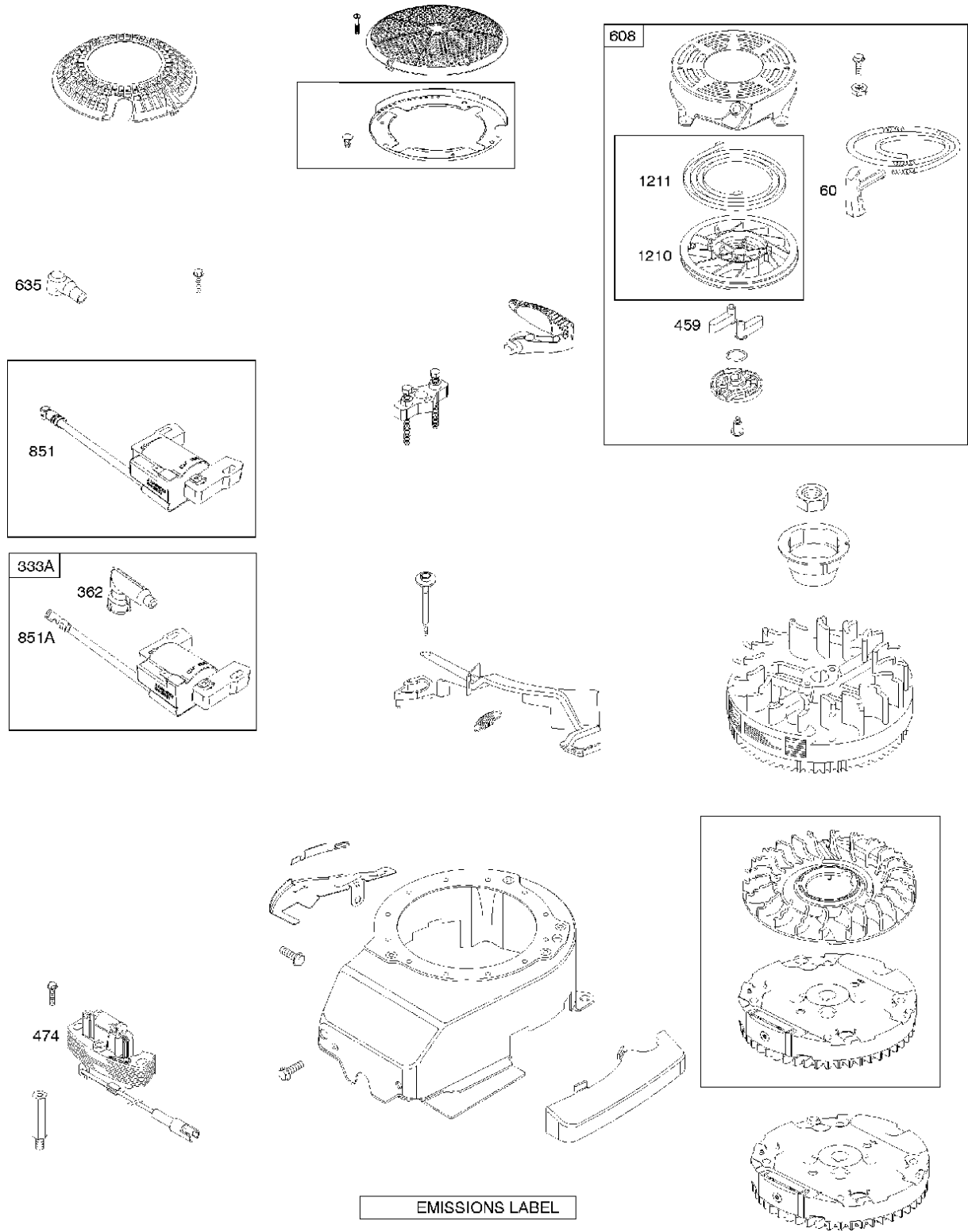
Ref	Part No	Description	Remark	QTY KIT
16	589 66 98-82	CRANKSHAFT	797020	1
24	582 28 90-90	WOODRUFF KEY	222698S	1
25	585 39 26-01	PISTON	590404	1
29	585 39 27-01	CONNECTING ROD	797306	1
46	585 39 30-01	CAMSHAFT	691449	1
50	589 79 27-01	MANIFOLD	794305	1
337	582 31 23-71	SPARK PLUG CAP	796112S	1
337	582 31 23-66	SPARK PLUG CAP	591868	1
635	582 31 35-85	SPARK PLUG CAP	66538S	1
N/A	589 66 98-12	KEY	Flywheel, Workshop package, 4181	10
N/A	589 66 98-07	KEY	Flywheel, Workshop package, 4144	50



Fuel system

BRIGGS & STRATTON ENGINES, 122T025045H2, 2017-01

Ref	Part No	Description	Remark	QTY	KIT
125	589 66 98-92	CARBURETTOR	799872	1	
187	576 92 09-01	FUEL HOSE	791766	1	
601	582 28 77-32	CLAMP	791850	1	
957A	584 95 80-01	CAP	692046	1	
958	584 95 81-01	VALVE	698183	1	
N/A	589 66 98-02	FUEL FILTER	Workshop package, 4105	5	



Starter

BRIGGS & STRATTON ENGINES, 122T025045H2, 2017-01

Ref	Part No	Description	Remark	QTY KIT
60	585 39 07-01	HANDLE	281434S	1
333A	579 32 30-01	IGNITION MODULE	590455	1
362	585 39 09-01	SPARK PLUG CAP	793351	1
459	582 31 05-24	GRIPPER	281505S	1
474	585 35 55-01	ALTERNATOR	691991	1
608	582 31 25-73	STARTER HOUSING	497680	1
635	582 31 35-85	SPARK PLUG CAP	66538S	1
851	584 96 04-01	SPARK PLUG CAP	493880S	1
851A	585 24 24-01	SPARK PLUG CAP	692424	1
1210	582 31 26-05	STARTER PULLEY	498144	1
1211	582 31 26-05	STARTER PULLEY	498144	1
N/A	589 66 98-14	RATCHET	Workshop package, 4204	10