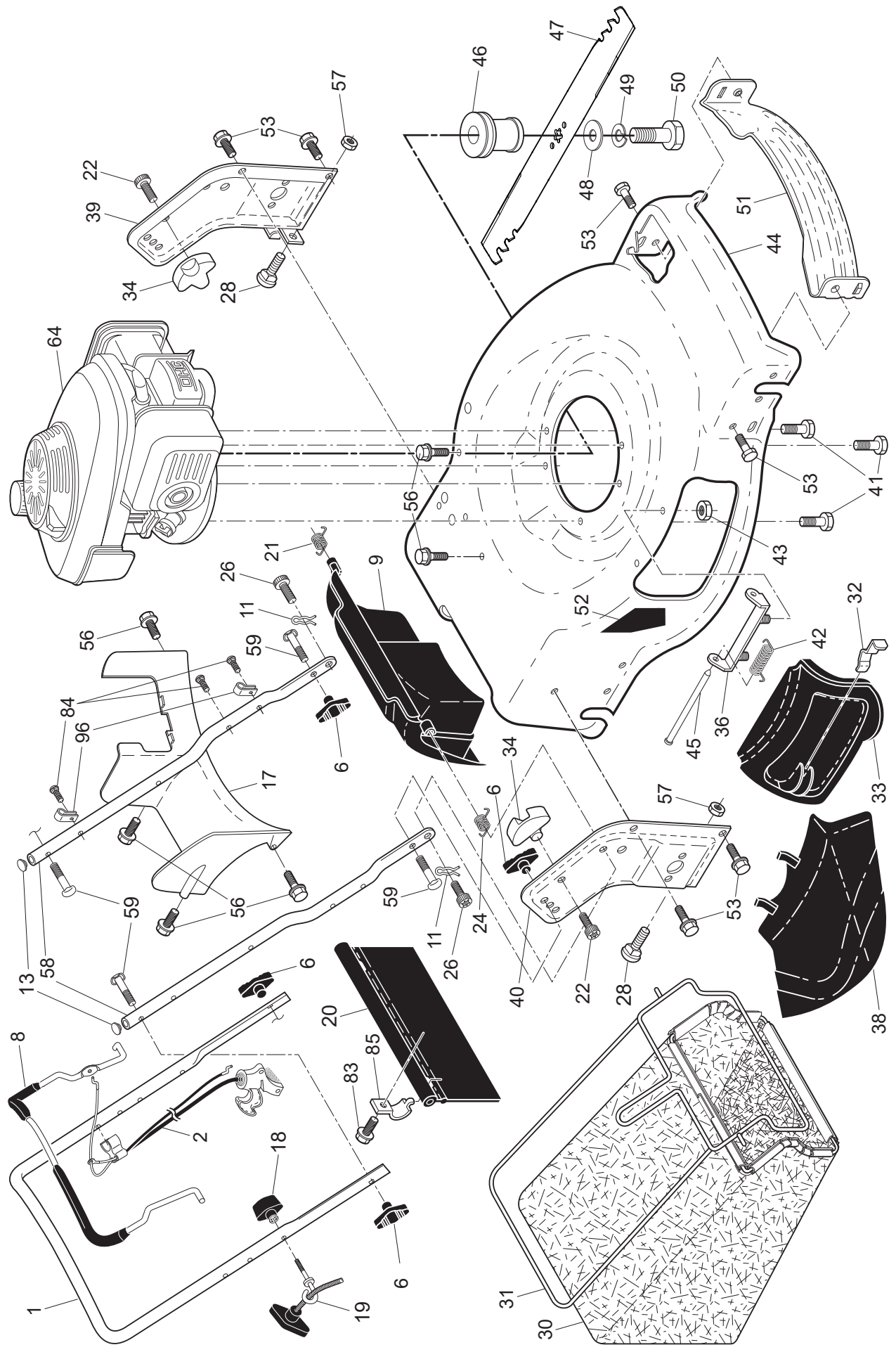


ILLUSTRATED PARTS LIST

MODEL NUMBER SP110

MFG. ID. NUMBER 96144001100

SNAPPER ROTARY LAWN MOWER - MODEL NUMBER SP110 (MFG. ID. NUMBER 96144001100)



SNAPPER ROTARY LAWN MOWER - MODEL NUMBER SP110 (MFG. ID. NUMBER 96144001100)

KEY NO.	MFG. NO.	SNAPPER PART NO.	DESCRIPTION	KEY NO.	MFG. NO.	SNAPPER PART NO.	DESCRIPTION
1	585 85 48-05		Upper Handle	42	532 19 30-00		Spring, Torsion
2	532 42 49-83		Cable, Engine Zone Control	43	532 19 17-30		Nut, Hex, Nylock
6	532 19 19-38		Handle Knob, Standard	44	588 61 02-33		Kit, Lawn Mower Housing
8	587 68 93-01		Control Bar	45	532 17 56-50		Rod, Hinge
9	585 84 76-01		Rear Door Assembly	46	581 85 15-01		Blade Adapter / Pulley
11	532 42 55-75		Hairpin, Door/Handle Pivot	47	532 42 04-63		Blade, 22"
13	532 43 75-16		Plug, Handle Bar	48	532 85 10-74		Washer, Hardened
17	581 78 21-01		Rear Baffle	49	532 85 02-63		Washer, Helical
18	581 91 26-01		T-Knob	50	532 85 10-84		Screw, Machine, Hex Head
19	581 90 21-01		Rope Guide				3/8-24 x 1-3/8 Grade 8
20	532 44 45-37		Rear Skirt	51	532 43 05-99		Front Baffle
21	532 41 99-49		Spring, Rear Door, LH, Black	52	532 40 47-63		Decal, Danger
22	532 14 18-41		Screw, Pan Head, Torx #20	53	817 00 05-10		Screw
24	532 41 99-48		Spring, Rear Door, RH, Grey	56	817 41 13-12		Screw, Hex Washer Head #13 x 3/4
26	532 41 99-45		Screw, Rear Door/Handle Pivot	57	532 15 53-77		Nut, Hex
28	586 21 25-01		Bolt, Carriage 5/16-18 x 5/8	58	585 90 82-02		Bar, Lower Handle
30	580 94 73-21		Grassbag	59	532 19 15-74		Handle Bolt
31	585 05 47-02		Frame, Grass Catcher	64	- - -		Engine, Honda, Model Number
32	532 44 11-92		Latch, Mulcher Door				GCV160-LAOS3B
33	532 43 26-42		Mulcher Door	83	532 75 00-97		Screw, Hex Washer Head
34	532 43 81-34		Bracket, Grassbag	84	532 42 81-24		Fastener, Push
36	532 17 57-35		Hinge Bracket Assembly	85	532 43 45-30		Mounting Bracket, Rear Skirt
38	532 42 61-29		Discharge Deflector	96	532 19 79-91		Clip, Cable
39	585 90 07-02		Handle Bracket, LH	- -	532 42 38-49		Bag of Parts (Includes Key
40	585 90 08-02		Handle Bracket, RH				Numbers 12 and 59)
41	532 15 04-06		Bolt, Engine 3/8-16	- -	115 93 00-96		Operator's Manual (English/Spanish)

NOTE: All component dimensions given in U.S. inches. 1 inch = 25.4 mm. **IMPORTANT:** Use only Original Equipment Manufacturer (O.E.M.) replacement parts. Failure to do so could be hazardous, damage your lawn mower and void your warranty

SNAPPER ROTARY LAWN MOWER - MODEL NUMBER SP110 (MFG. ID. NUMBER 96144001100)

KEY NO.	MFG. NO.	SNAPPER PART NO.	DESCRIPTION	KEY NO.	MFG. NO.	SNAPPER PART NO.	DESCRIPTION
1	589 81 88-07		Drive Control Assembly (Includes Cable)	33	532 40 91-48		Locknut, Hex
2	586 07 28-02		Mounting Bracket, Idler Pulleys	34	532 19 74-80		O-Ring
4	589 59 92-01		Gearcase, Front, Complete	37	532 16 34-09		Screw, Hi-Lo Thread #12 x 5/8
8	532 40 48-35		Pinion, Front	40	581 68 53-05		Wheel & Tire Assembly, Front
9	581 95 21-01		Cable, Drive Control	41	532 42 11-14		Water Washout Assembly
10	587 24 93-02		Mounting Bracket, Drive Control	42	532 41 97-35		Fitting, Hose, Water Washout
12	580 36 46-03		Belt, Drive	43	532 41 55-85		Washer, Lock, Internal Tooth
13	581 68 08-01		Gearcase, Rear, Complete	44	532 41 55-86		Locknut, Hex, with O-Ring
14	586 96 30-01		Drive Pulley	45	587 43 82-01		Belt Keeper, Gearcase, Front
15	587 48 65-02		Wheel Adjuster Assembly, Rear, RH (Includes Bearing)	46	584 29 94-01		Screw
16	581 49 79-07		Wheel Adjuster Assembly, Front, LH (Includes Bearing)	48	587 97 30-01		Pulley, Idler
18	532 70 10-37		Knob, Selector	49	581 33 45-01		Screw, Mounting, Idler Pulley
20	580 80 69-01		Debris Shield	55	581 35 13-01		Spring, Tension
22	817 00 05-10		Screw, Hex Washer Head	57	532 40 91-49		Nut, Hex
25	532 42 60-65		Mounting Bracket, Debris Shield	59	532 44 21-13		Support Bracket
26	581 15 25-02		Belt Keeper, Gearcase, Rear	61	532 18 16-98		Screw
27	532 06 77-25		Washer, Flat 3/8	86	580 99 15-19		Drive Cover
28	812 00 00-58		E-Ring	87	532 17 52-62		Screw, Pan Head #10-24 x 2-3/4
29	581 84 04-01		Dust Cover, Front	89	581 49 79-08		Wheel Adjuster Assembly, Front, RH (Includes Bearing)
30	532 43 81-30		Locknut, Hex	90	587 48 65-01		Wheel Adjuster Assembly, Rear, LH (Includes Bearing)
31	532 40 48-45		Pawl, Drive	91	587 23 24-01		Rear, LH (Includes Bearing)
32	585 43 73-09		Wheel & Tire Assembly, Rear	92	587 25 17-01		Pinion, Rear
				93	532 19 17-30		Dust Cover, Rear Nut, Hex

NOTE: All component dimensions given in U.S. inches. 1 inch = 25.4 mm. **IMPORTANT:** Use only Original Equipment Manufacturer (O.E.M.) replacement parts. Failure to do so could be hazardous, damage your lawn mower and void your warranty.