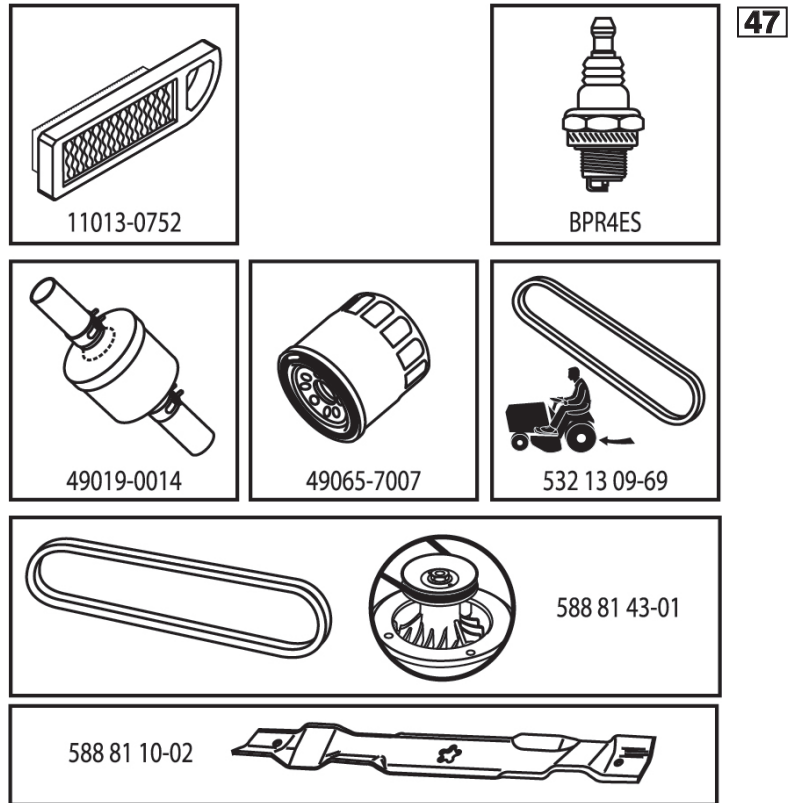


ILLUSTRATED PARTS LIST

MFG. ID NO. 96041039800

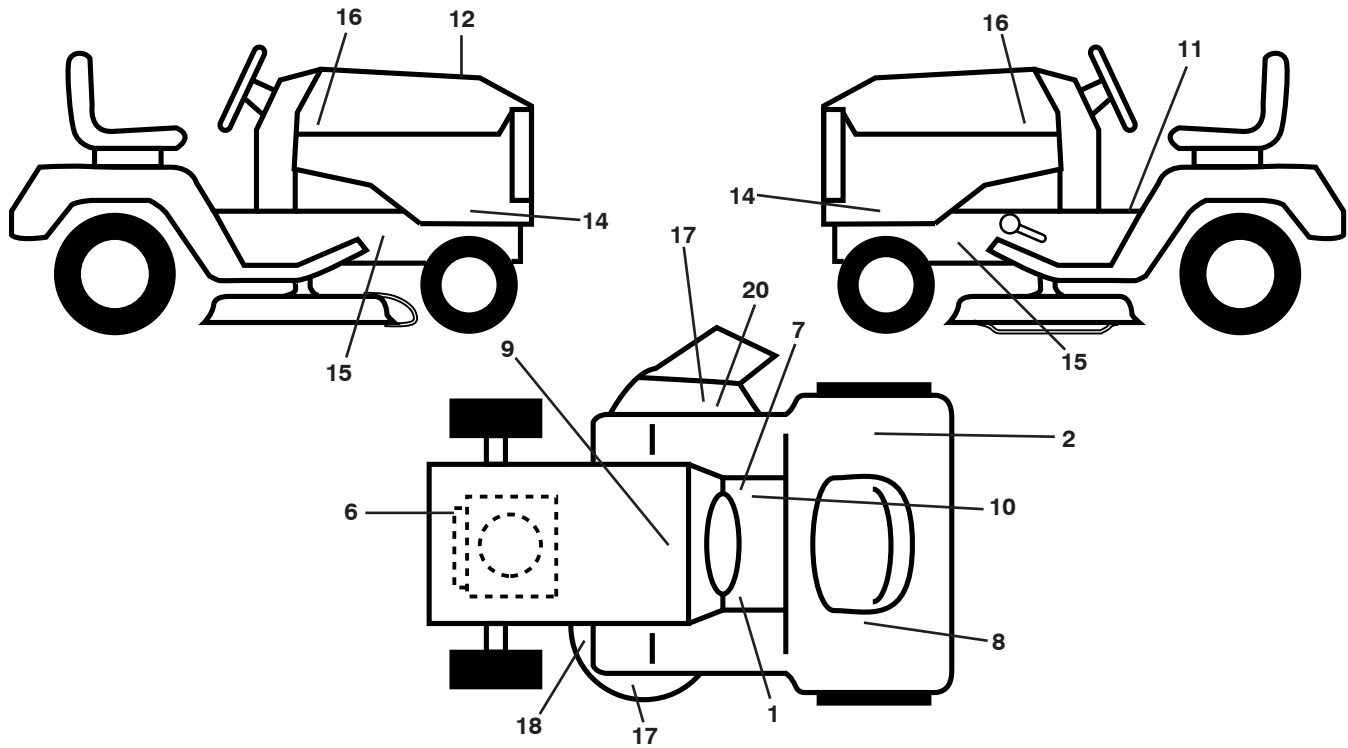
CUSTOMER CATALOG NO. TS 348

PRODUCT NO. 960 41 03-98



590412301

**TRACTOR - - MODEL NO. TS 348 (96041039800), PRODUCT NO. 960 41 03-98
DECALS 27**



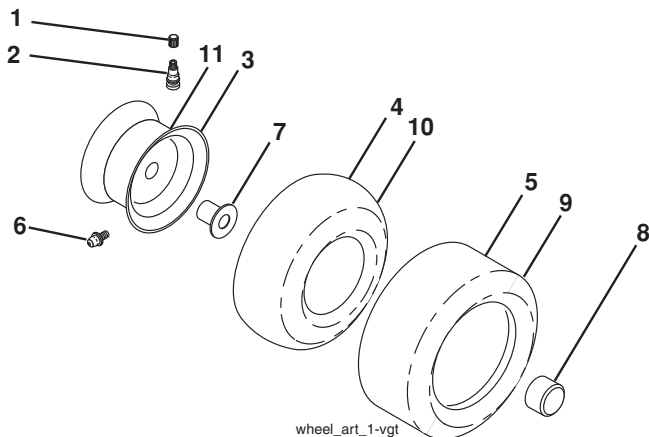
**KEYPART
NO. NO.**

KEYPART NO. NO.	DESCRIPTION
1 581 72 40-01	Decal, Brake/Clutch Sym
2 501 08 26-01	Decal, ECM Australia
6 581 57 97-01	Decal, Warning Eng. Syms.
7 581 57 80-01	Decal, Saddle Brake Parking
8 587 01 51-01	Decal, Warn. Reserve Fuel
9 532 14 50-05	Decal, Battery Dan./Poi.
10 586 80 03-01	Decal, Oper. Cruise Sym.
11 581 57 81-01	Decal, Warning Sym.
12 590 41 23-01	Decal, RPL
14 588 77 47-01	Decal, Panel Side
15 581 57 96-01	Decal, Chassis Hot Muffler
16 581 62 73-01	Decal, Badge Logo

**KEYPART
NO. NO.**

KEYPART NO. NO.	DESCRIPTION
17 589 35 79-01	Decal, No Step
18 581 58 00-02	Decal, Mower DFLCTR Warning CTFNGR
20 579 81 79-01	Decal, Warning
-- 501 74 90-01	Decal, Drawbar Locking Differential
-- 581 72 48-01	Decal, Bypass
-- 532 43 98-82	Pad, Footrest, LH
-- 532 43 98-81	Pad, Footrest, RH
-- 581 72 46-01	Decal, Drawbar Load
-- 115 87 97-28	Manual, Operator's English

WHEELS AND TIRES



**KEYPART
NO. NO.**

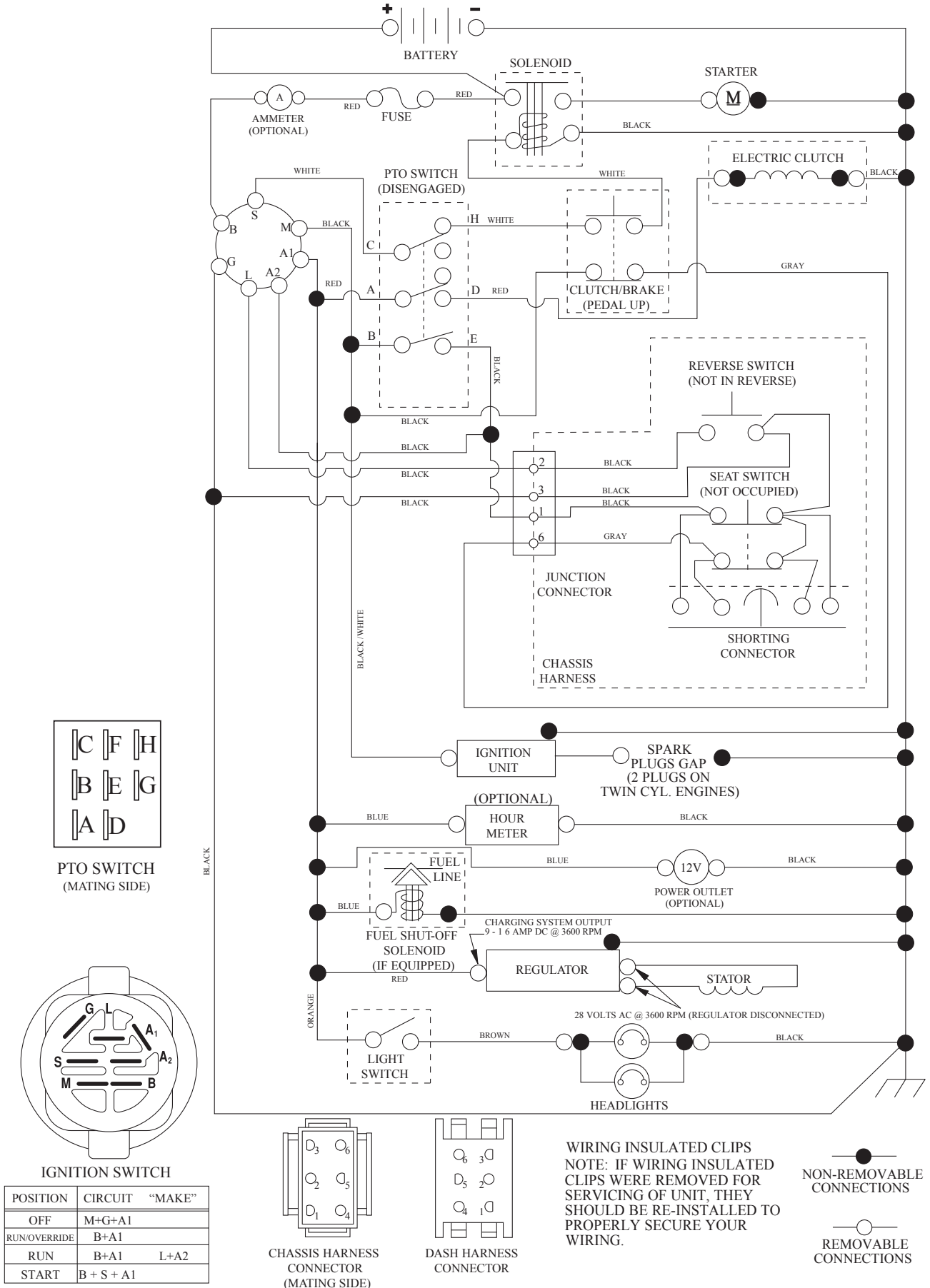
KEYPART NO. NO.	DESCRIPTION
1 532 05 91-92	Cap, Valve, Tire
2 532 06 51-39	Stem, Valve
3 532 18 18-39	Rim Assembly, Front
4 532 05 99-04	Tube, Front (Service Item Only)
5 532 16 10-24	Tire, Front 16 x 6.5-8
6 532 12 49-57	Fitting, Grease (Front Wheel Only)
7 532 12 49-59	Bearing, Flange (Front Wheel Only)
8 532 17 50-39	Cap, Axle
9 532 17 04-56	Tire, Rear 20 x 10-8
10 532 12 49-26	Tube, Rear (Service Item Only)
11 532 13 83-37	Rim Assembly, Rear
-- 532 14 43-34	Sealant, Tire (10 oz. Tube)

NOTE: All component dimensions given in U.S. inches
1 inch = 25.4 mm

TRACTOR - - MODEL NO. TS 348 (96041039800), PRODUCT NO. 960 41 03-98

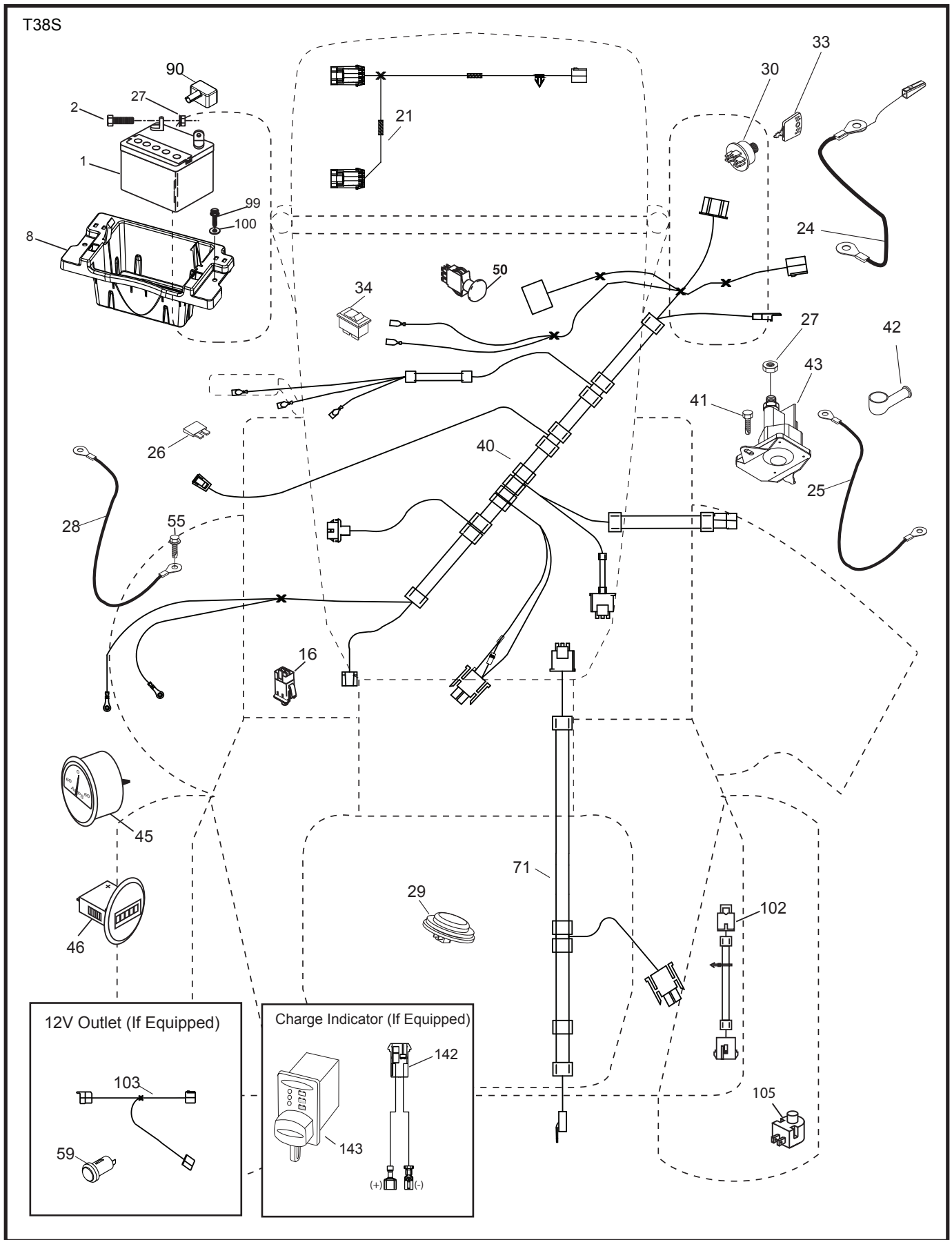
SCHEMATIC 38

SCH12



POSITION	CIRCUIT	"MAKE"
OFF	M+G+A1	
RUN/OVERRIDE	B+A1	
RUN	B+A1	L+A2
START	B + S + A1	

TRACTOR - - MODEL NO. TS 348 (96041039800), PRODUCT NO. 960 41 03-98
ELECTRICAL 32

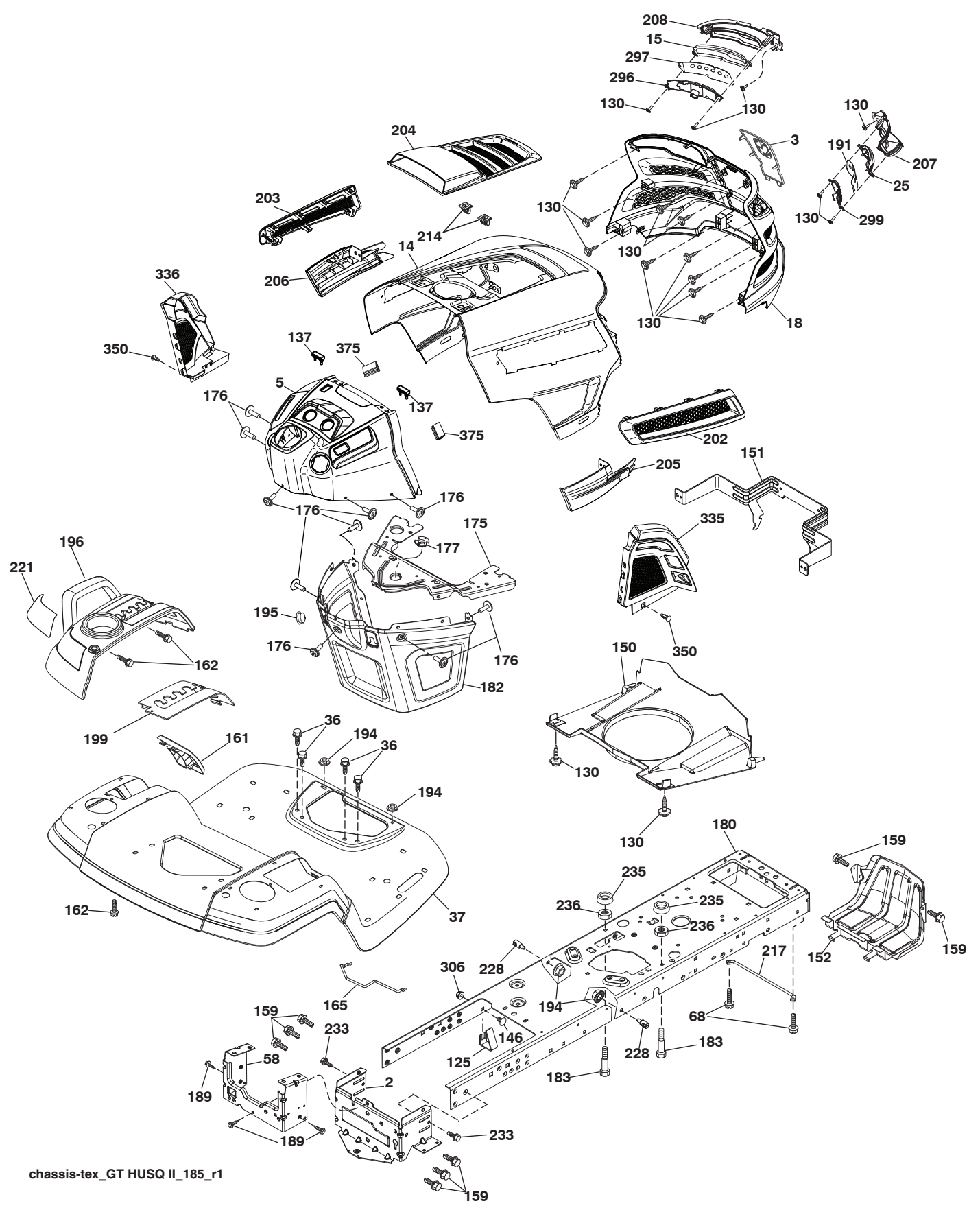


**TRACTOR - - MODEL NO. TS 348 (96041039800), PRODUCT NO. 960 41 03-98
ELECTRICAL 32**

KEY PART NO.	NO.	DESCRIPTION
1	532 16 34-65	Battery
2	874 76 04-12	Bolt Hex Hd. 1/4-20 unc x 3/4
8	587 20 51-01	Battery Box
16	532 17 61-38	Switch Interlock
21	585 43 64-01	Harness Light
24	585 55 56-01	Cable Battery
25	585 55 55-01	Cable Starter
26	532 17 51-58	Fuse
27	873 51 04 00	Nut Keps Hex 1/4-20 unc
28	532 41 65-88	Cable Ground
29	532 40 15-45	Switch Seat
30	532 19 33-50	Switch Ign.
33	532 41 19-35	Key/Chain
34	532 11 07-12	Switch Light
40	501 13 31-01	Harness Ign. Dash
41	817 72 04-08	Screw 1/4-20 x 1/2
42	532 13 15-63	Cover Terminal
43	582 04 28-01	Solenoid
45	587 55 39-03	Ammeter Guage Round
46	587 55 40-03	Hourmeter Gauge
50	582 10 76-01	Switch PTO
55	817 06 05-12	Screw 5/16-18 x 3/4
71	532 19 42-76	Harness Ign. Chassis
90	532 43 53-95	Cover Terminal Battery
99	817 67 04-12	Screw Hex Wsh. Thdrol. 1/4-20 x 3/4
100	819 09 14-16	Washer 9/32 x 7/8 x 16 Ga.
102	532 40 44-54	Harness Pigtail Tex ROS Tufftorq
105	532 40 75-68	Switch Reverse

NOTE: All component dimensions given in U.S. inches
1 inch = 25.4 mm

TRACTOR - - MODEL NO. TS 348 (96041039800), PRODUCT NO. 960 41 03-98
CHASSIS AND ENCLOSURES 39



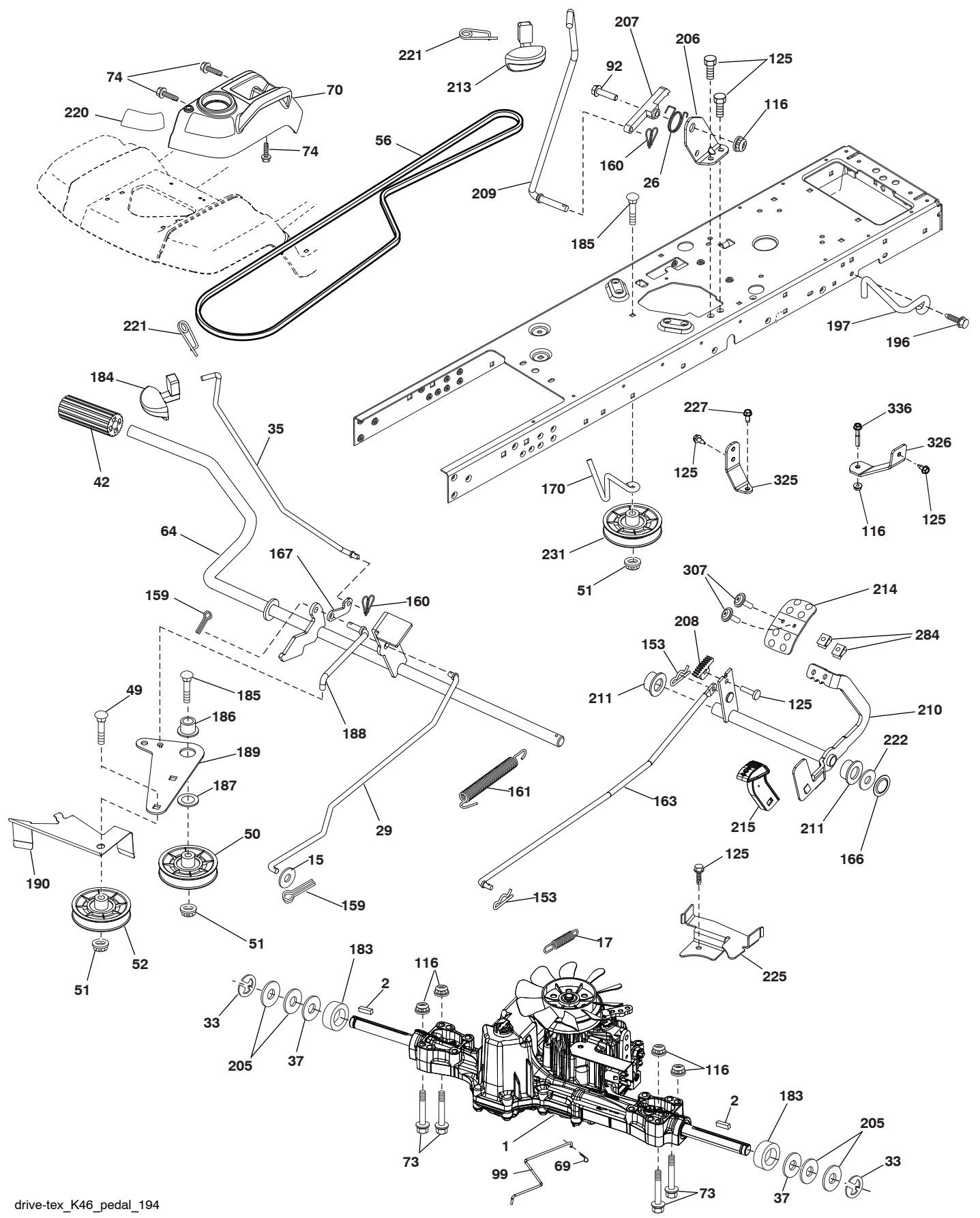
chassis-tex_GT HUSQ II_185_r1

**TRACTOR - - MODEL NO. TS 348 (96041039800), PRODUCT NO. 960 41 03-98
CHASSIS AND ENCLOSURES 39**

KEY NO.	PART NO.	DESCRIPTION	KEY NO.	PART NO.	DESCRIPTION
2	532 41 22-82	Drawbar Lower	199	532 19 82-59	Plate Deck Lift
3	532 44 44-81	Applique	202	532 43 97-28	Vent Side Hood RH
5	582 09 11-01	Dash	203	532 43 97-27	Vent Side Hood LH
14	532 44 11-77	Hood	204	532 44 44-84	Vent Top Hood
15	585 42 03-01	Lens LH	205	532 43 97-30	Trim Hood Side RH
18	587 52 34-01	Grille	206	532 43 97-29	Trim Hood Side LH
25	585 42 02-01	Lens RH	207	585 42 00-02	Bezel RH
36	817 06 05-12	Screw 5/16-18 x 3/4	208	585 42 01-02	Bezel LH
37	532 44 12-08	Fender	214	532 19 91-45	Clip Retainer Tinner
58	532 41 22-81	Drawbar Upper	217	532 40 91-67	Rod Pivot
68	817 49 05-08	Screw 5/16-18 x 1/2	221	532 19 89-09	Reflector LH
125	581 68 48-01	Clip Fuel Line	228	532 19 51-61	Stud Fastner
130	532 41 63-58	Screw #10 x 0.750 BOS Thread	233	532 19 65-39	Bolt Shoulder
137	532 40 75-90	Bumper Dash	235	532 40 61-29	Spacer Fender
146	581 85 79-01	Bolt	236	873 93 05-00	Nut Lock 5/16-18 unc
150	532 43 97-74	Air Duct	296	585 42 05-01	LED Light LH
151	532 43 66-70	Bracket Pivot	297	586 18 29-01	Insert LH
152	532 43 98-70	Shield Browning	299	585 42 04-01	LED Light RH
159	817 00 06-12	Screw Hexwsh THDR 3/8 - 16x3/4	306	873 90 06-00	Nut Lock
161	532 43 99-29	Window Fuel	335	532 44 82-04	Cover Dash RH
162	532 14 24-32	Screw	336	532 44 53-09	Cover Dash LH
165	532 19 43-30	Support Tank Rear	350	532 44 51-43	Clip X-mas Tree
175	532 19 63-04	Crossmember	375	586 90 82-01	Dash Clip-On Bumper
176	532 40 07-76	Screw 10-24 x 5/8	--	532 43 18-82	Kit Guard Brush
177	532 19 52-28	Bushing Steering			
180	532 44 55-59	Chassis			
182	532 40 68-59	Dash Lower			
183	874 52 05-20	Bolt 5/16-18 x 1-1/4 Full Thread			
189	817 00 05-12	Screw 5/16-18 x 3/4			
191	586 18 28-01	Insert RH			
194	873 90 05-00	Nut Lock Hex Flange 5/16-18			
195	532 40 41-37	Plug Hole Dash Lower			
196	532 43 97-16	Console Asm. Deck Lift			

NOTE: All component dimensions given in U.S. inches
1 inch = 25.4 mm

TRACTOR - - MODEL NO. TS 348 (96041039800), PRODUCT NO. 960 41 03-98
DRIVE 40



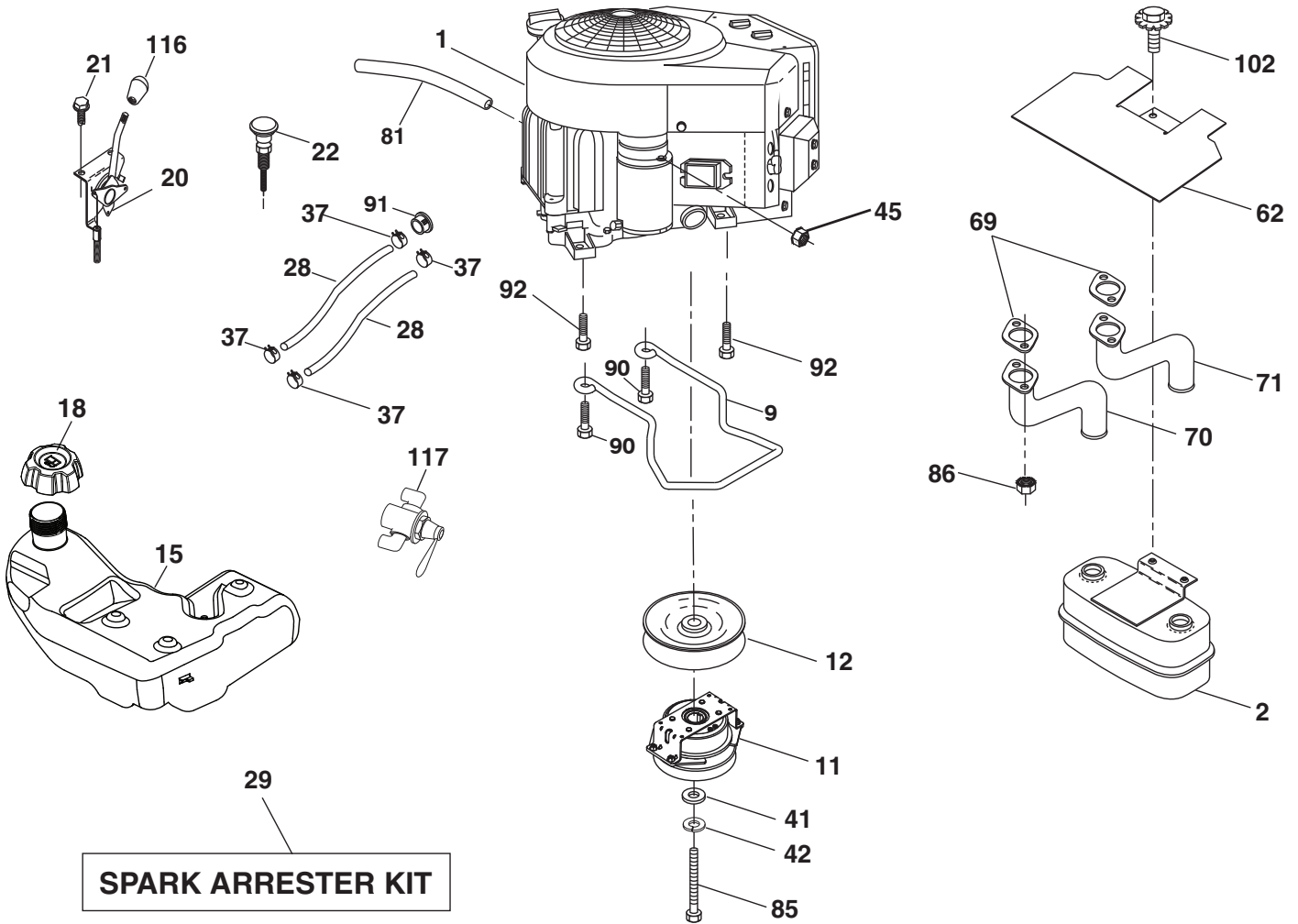
drive-tex_K46_pedal_194

**TRACTOR - - MODEL NO. TS 348 (96041039800), PRODUCT NO. 960 41 03-98
DRIVE **40****

KEY NO.	PART NO.	DESCRIPTION	KEY NO.	PART NO.	DESCRIPTION
1	---	Transaxle, TUFFTORQ K46 CR (501051401) (Order parts from transaxle manufacturer.)	187	819 13 32-10	Washer
2	532 12 35-83	Key	188	582 21 70-01	Link Clutch Ground Drive, Long
15	819 13 13-16	Washer 13/32 x 13/16 x 16 Ga.	189	532 19 43-17	Bellcrank Ground Drive
17	532 41 36-78	Spring, Brake	190	532 19 43-18	Keeper Bellcrank Ground Drive
26	532 19 96-79	Spring Return Cruise	196	817 00 06-16	Screw 3/8-16 x 1
29	532 40 38-06	Rod, Brake	197	587 40 20-01	Link Clutch Anti-Rotation
33	812 00 00-01	Ring E	205	532 12 17-48	Washer
35	583 86 45-01	Rod, Brake, Park	206	532 44 85-96	Bracket Mount Latch Cruise
37	532 18 89-67	Washer Hardened	207	587 03 14-01	Latch Control Cruise
42	532 12 48-72	Cover, Foot Pedal	208	532 19 78-69	Gear Sector Control Cruise
49	872 11 06-14	Bolt	209	532 19 95-92	Rod Control Cruise
50	532 19 43-27	Pulley Idler Flat	210	532 19 78-60	Rocker Asm. Pedal Control
51	873 90 06-00	Lock Nut 3/8-16	211	532 12 01-83	Bearing Nylon
52	532 19 43-26	Idler V-Groove	213	532 40 31-19	Knob Control Cruise
56	532 13 09-69	V-Belt, Drive	214	532 41 68-63	Pedal Forward
64	532 19 78-65	Shaft Asm. Pedal Brake Control	215	586 60 65-02	Pedal Reverse
69	532 42 33-03	Hairpin Soft Zink .059 x 1.125	220	532 19 89-08	Reflector RH
70	532 43 96-61	Console Shift	221	532 40 31-87	Retainer Spring Clip Handle
73	874 49 05-40	Bolt Hex Flghd 5/16-18 Gr. 5	222	879 21 20-10	Washer 21/32 x 1-1/4 x 10 Ga.
74	532 14 24-32	Screw Hex Wsh. Hi-Lo 1/4 x 1/2 unc	225	532 40 33-19	Keeper Belt Trans.
92	874 76 05-20	Bolt Fin Hex 5/16-18 unc x 1.25	227	817 49 05-12	Screw Thdrol 5/16-18 x 3/4
99	582 40 45-01	Rod Spring Bypass	231	532 40 72-87	Idler V-Groove
116	873 90 05-00	Nut Lock Hex Flange 5/16-18	284	532 41 76-93	Nut U-CHNL 1/4-20
125	817 00 05-12	Screw 5/16-18 x 3/4	307	874 18 04-12	Screw MACH CR 1/4-20 x 3/4
153	532 12 47-88	Retainer Spring	325	586 43 12-02	Torque Strap K46 LT LH
159	876 02 04-12	Pin Cotter 1/8 x 3/4	326	586 00 11-02	Bracket TRQ STP 46 20" Tire RH
160	532 16 94-84	Retainer Clip	336	587 25 96-01	Bolt 5/16-18 x 1-3/4 Flanged
161	532 10 57-09	Spring, Return, Clutch			
163	532 44 82-75	Rod Pedal Control			
166	532 42 91-64	Nut Push			
167	532 40 52-57	Latch Brake Parking			
170	532 41 34-30	Keeper Belt Centerspan			
183	532 13 70-57	Spacer Split			
184	587 65 37-01	Handle Parking Brake			
185	872 11 06-22	Bolt Rdhd Sqnk 3/8-16 x 2-1/2			
186	532 19 43-21	Spacer Retainer			

NOTE: All component dimensions given in U.S. inches
1 inch = 25.4 mm

TRACTOR - - MODEL NO. TS 348 (96041039800), PRODUCT NO. 960 41 03-98
ENGINE **24**



engine-tex_Kawa-2cyl_45_r3

**TRACTOR - - MODEL NO. TS 348 (96041039800), PRODUCT NO. 960 41 03-98
ENGINE 24**

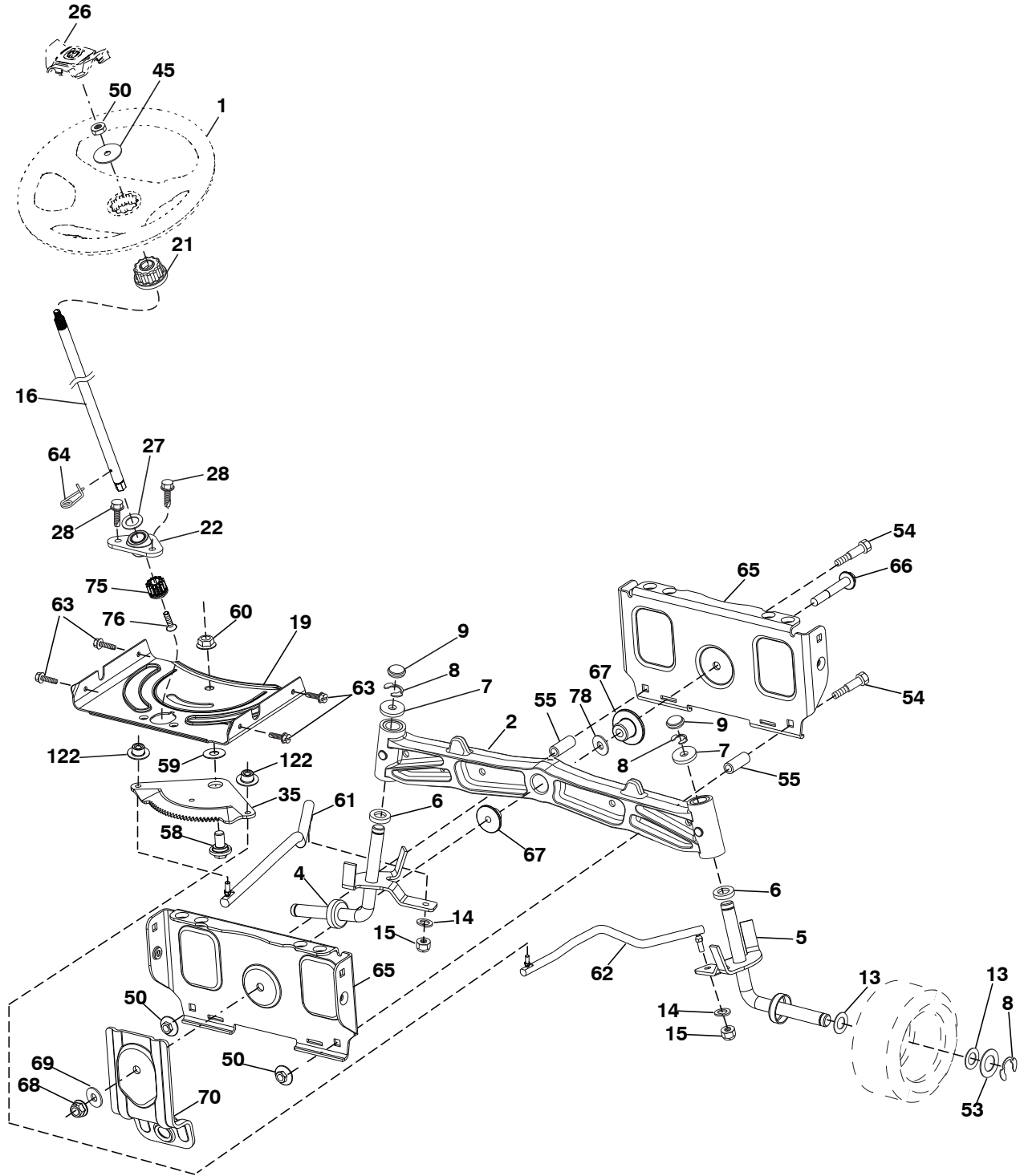
KEY NO.	PART NO.	DESCRIPTION
1	- - - - -	Engine Kawa Model No. FR691-DS15 (581557501) (Order parts from engine manufacturer.)
2	532 44 59-62	Muffler
9	501 83 26-02	Keeper Belt Engine
11	587 25 50-01	Clutch Electric
12	586 89 96-01	Pulley Engine
15	532 42 28-04	Tank Fuel
18	584 24 87-02	Cap
20	532 42 43-41	Control Throttle
21	532 41 63-58	Screw #10 x .750 BOS Thread
22	532 18 95-41	Control Choke
28	587 04 46-61	Fuel Line
29	532 13 71-80	Spark Arrester Kit
37	532 12 34-87	Clamp Hose
41	532 12 61-97	Washer 1-1/2 OD x 15/32 ID x .250
42	539 99 02-47	Washer Lock 7/16
45	873 51 04-00	Nut Keps Hex 1/4-20 unc
62	532 43 40-17	Heat Shield
69	532 17 81-51	Gasket
70	583 95 56-01	Tube Exhaust LH
71	583 95 57-01	Tube Exhaust RH
81	532 14 84-56	Tube Drain Oil
85	501 60 67-01	Bolt 7/16-20 x 5 Gr. 5
86	532 18 43-62	Nut Hex Flange TopLock M8-1.25
90	817 00 06-16	Screw 3/8-16 x 1
91	532 18 74-95	Bushing 1.375 OD
92	817 12 06-16	Screw 3/8-16 x 1
102	817 00 05-12	Screw 5/16-18 x 3/4
116	539 13 26-24	Knob-Shift
117	532 42 08-28	Valve Fuel Reserve

NOTE: All component dimensions given in U.S. inches
1 inch = 25.4 mm

Engine Power Rating Information

The gross power rating for individual gas engine models is labeled in accordance with SAE (Society of Automotive Engineers) code J1940 (Small Engine Power & Torque Rating Procedure), and rating performance has been obtained and corrected in accordance with SAE J1995 (Revision 2002-05). Torque values are derived at 3060 RPM; horsepower values are derived at 3600 RPM. Actual gross engine power will be lower and is affected by, among other things, ambient operating conditions and engine-to-engine variability. Given both the wide array of products on which engines are placed and the variety of environmental issues applicable to operating the equipment, the gas engine will not develop the rated gross power when used in a given piece of power equipment (actual "on-site" or net power). This difference is due to a variety of factors including, but not limited to, accessories (air cleaner, exhaust, charging, cooling, carburetor, fuel pump, etc.), application limitations, ambient operating conditions (temperature, humidity, altitude), and engine-to-engine variability. Due to manufacturing and capacity limitations, Briggs & Stratton may substitute an engine of higher rated power for this Series engine.

TRACTOR - - MODEL NO. TS 348 (96041039800), PRODUCT NO. 960 41 03-98
STEERING ASSEMBLY **41**



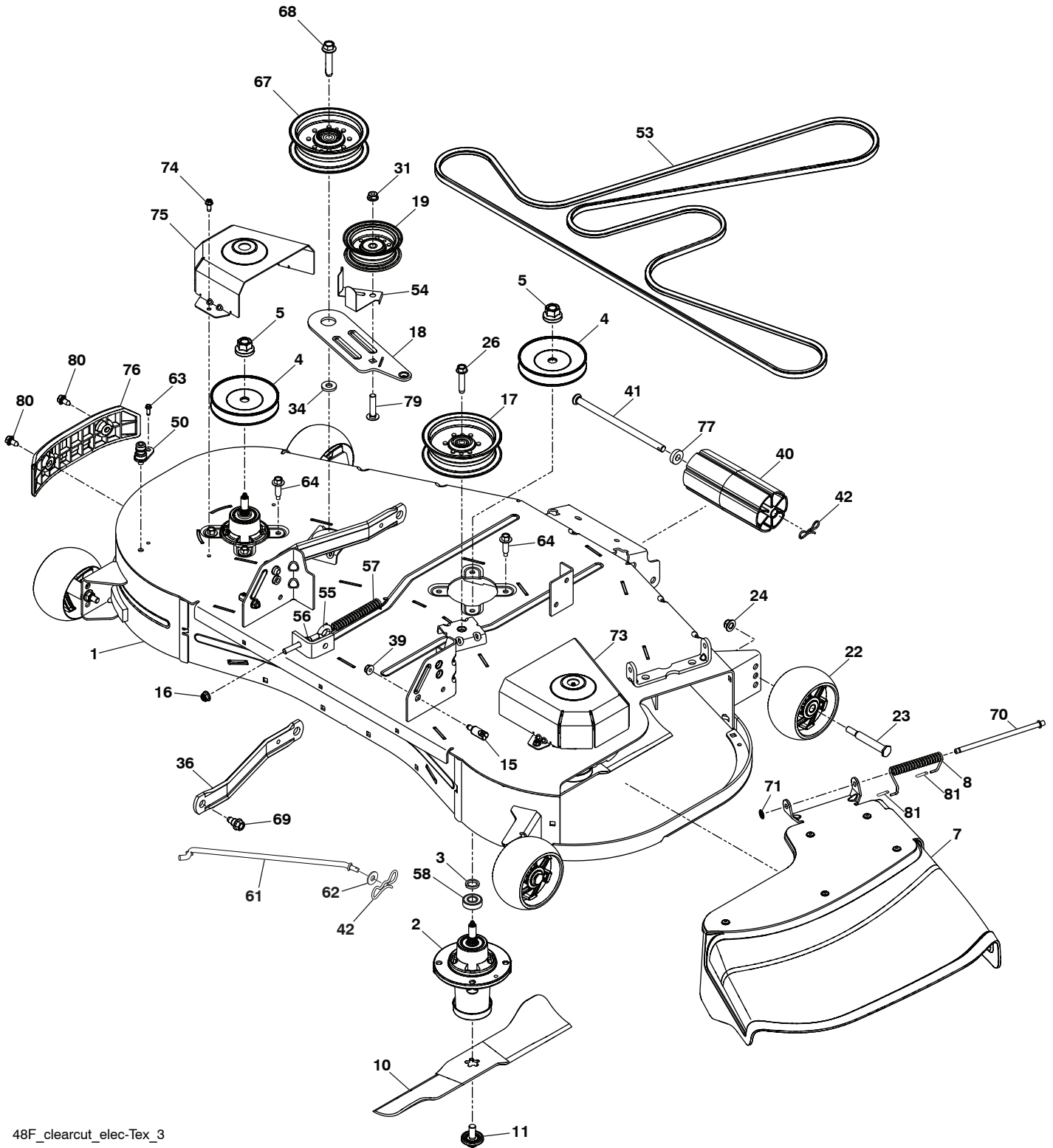
steering-tex_HUSQSR_63

**TRACTOR - - MODEL NO. TS 348 (96041039800), PRODUCT NO. 960 41 03-98
STEERING ASSEMBLY 41**

KEY NO.	PART NO.	DESCRIPTION
1	532 43 97-40	Wheel, Steering
2	532 19 59-68	Axle Asm., Front
4	532 40 30-89	Spindle Asm., LH
5	532 40 30-90	Spindle Asm., RH
6	532 12 49-31	Bearing, Race Thrust Harden
7	532 12 17-48	Washer 25/32 x 1-5/8 x 16 Ga.
8	812 00 00-29	Ring, Clip #T5304-75
9	532 12 12-32	Cap, Spindle
13	532 12 17-49	Washer 25/32 x 1-1/4 x 16 Ga.
14	539 99 01-18	Washer, SLW ZD 3/8
15	873 54 06-00	Nut, Crown Lock 3/8-24 unf
16	587 01 60-02	Steering Shaft
19	532 19 47-29	Plate Steering
21	586 84 02-01	Adapter Wheel Steering
22	585 02 98-02	Bearing
26	532 43 97-43	Insert, Wheel Steering
27	819 21 16-16	Washer
28	817 00 06-12	Screw 3/8-16 x 3/4
35	532 19 47-32	Gear, Sector Plate
45	587 01 64-01	Washer 3/8 ID 2-3/8 OD 12 Ga. PLTD
50	873 90 06-00	Nut Lock Flg 3/8-16 unc
53	532 18 89-67	Washer Hardened .793 x 1.637 x .060
54	874 76 06-36	Bolt Hex 3/8-16 unc x 2-1/4
55	532 41 47-36	Spacer Brace Axle
58	532 19 47-47	Bolt Shoulder Sector Pivot CFM
59	532 19 47-48	Washer Thrust Sector Steering
60	873 97 10-00	Nut Flange Lock 5/8-11
61	588 79 44-01	Draglink, LH
62	588 79 45-01	Draglink, RH
63	817 00 05-12	Screw 5/16-18 x 3/4
64	532 19 98-49	Retainer Clip Spring Steering
65	532 19 47-34	Brace Axle Front
66	871 02 07-48	Bolt Hex Fghd 7/16-14 x 3 Serr
67	532 19 47-37	Bushing PM Front Axle
68	873 90 07-00	Nut Lock Flange 7/16-14 Gr. 5
69	532 19 91-62	Washer 1.5 x .505 x .118
70	585 33 88-01	Bracket Deck Susp. Front
75	580 68 37-01	Pinion
76	580 68 36-01	Screw Head Sock
78	532 05 70-79	Washer Thrust
122	532 44 49-62	Cap Gear

NOTE: All component dimensions given in U.S. inches
1 inch = 25.4 mm.

TRACTOR - - MODEL NO. TS 348 (96041039800), PRODUCT NO. 960 41 03-98
MOWER DECK 44



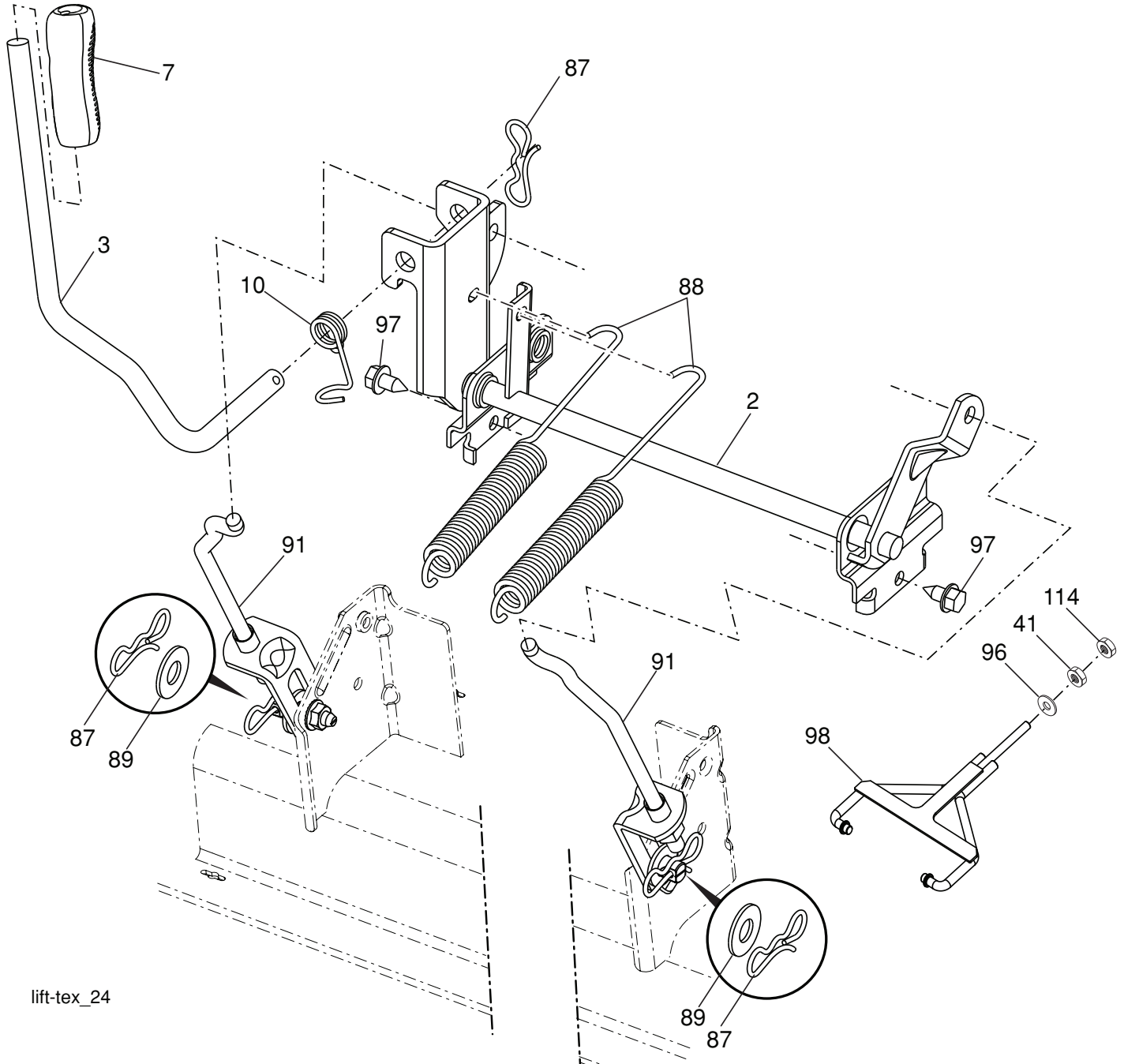
48F_clearcut_elec-TeX_3

**TRACTOR - - MODEL NO. TS 348 (96041039800), PRODUCT NO. 960 41 03-98
MOWER DECK 44**

KEY NO.	PART NO.	DESCRIPTION	KEY NO.	PART NO.	DESCRIPTION
1	588 78 80-04	Deck	56	539 99 05-85	Nut 5/16-18 Hex Whizlock
2	539 11 21-70	Housing Assembly	57	587 35 84-01	Spring Extension
3	532 18 76-90	Washer-Spacer	58	532 11 04-85	Ball Bearing
4	532 17 34-54	Pulley, Mandrel	61	532 40 48-51	Rod Anti Sway
5	532 40 02-34	Nut, Flange Lock Top	62	819 13 13-12	Washer 13/32 x 13/16 x 12 Ga.
7	588 98 07-03	Discharge Chute	63	817 49 04-10	Screw 1/4-20 x 5/8 Hx Self Tap
8	587 35 47-01	Spring - Torsion	64	584 95 39-01	Bolt Hx Wrshrhd 313-18 x 1.19
10	588 81 10-02	Blade	67	532 19 61-06	Pulley Idler
11	532 19 30-03	Bolt, Washer Asm 7/16-20	68	817 49 06-28	Screw Thdrl 3/8-16 x 1-3/4 TT
15	532 19 51-61	Stud, Fasten w/ Anti- Rotate	69	532 19 65-39	Bolt Shoulder
16	539 11 28-99	Nut 5/16-18 Hx Flg. Nyloc	70	532 13 14-91	Rod Hinge
17	532 19 61-04	Pulley, Idler Spec. Hub	71	532 11 04-52	Nut Push
18	588 81 22-02	Arm, Idler, Blk	73	588 81 31-02	Cover Mandrel LH
19	532 19 31-97	Pulley, Idler	74	532 13 77-29	Screw Thdrl 1/4-20 x 5/8
22	532 17 48-73	Wheel, Gauge	75	588 81 24-02	Cover Mandrel RH
23	532 19 34-06	Bolt, Shoulder 3/8 16 x 3-5/8	76	582 54 11-01	Bumper Asm.
24	521 99 65-01	Nut 3/8-16 Hex Flg Nyloc	77	582 36 05-01	Bushing Nose Roller
26	588 43 83-01	Screw 7/16-14 x 2.125 Washer	79	872 11 06-14	Bolt RdHd 3/8-16 unc x 1-3/4 G5
31	873 90 06-00	Nut Lock Flg.	80	532 17 01-65	Bolt Shoulder 5/16-18
34	532 17 85-15	Washer, Flat Hardened	81	532 10 53-04	Cap Sleeve
36	532 19 51-85	Arm, Susp., Rear	--	590 40 22-01	Mower Deck Complete
39	873 90 05-00	Nut 5/16-18 Lock Hx Flg.			
40	532 17 60-66	Roller, Nose			
41	532 17 91-27	Rod, Roller, Nose, Narrow			
42	532 19 42-08	Pin Cotter 5/16 Bow Tie Lock			
50	532 41 55-98	Washout Port			
53	588 81 43-01	Belt, Deck			
54	532 14 10-43	Guard, Belt			
55	539 11 55-74	Eyebolt 5/16 x 3-1/2			

NOTE: All component dimensions given in U.S. inches
1 inch = 25.4 mm

TRACTOR - - MODEL NO. TS 348 (96041039800), PRODUCT NO. 960 41 03-98
MOWER LIFT 45



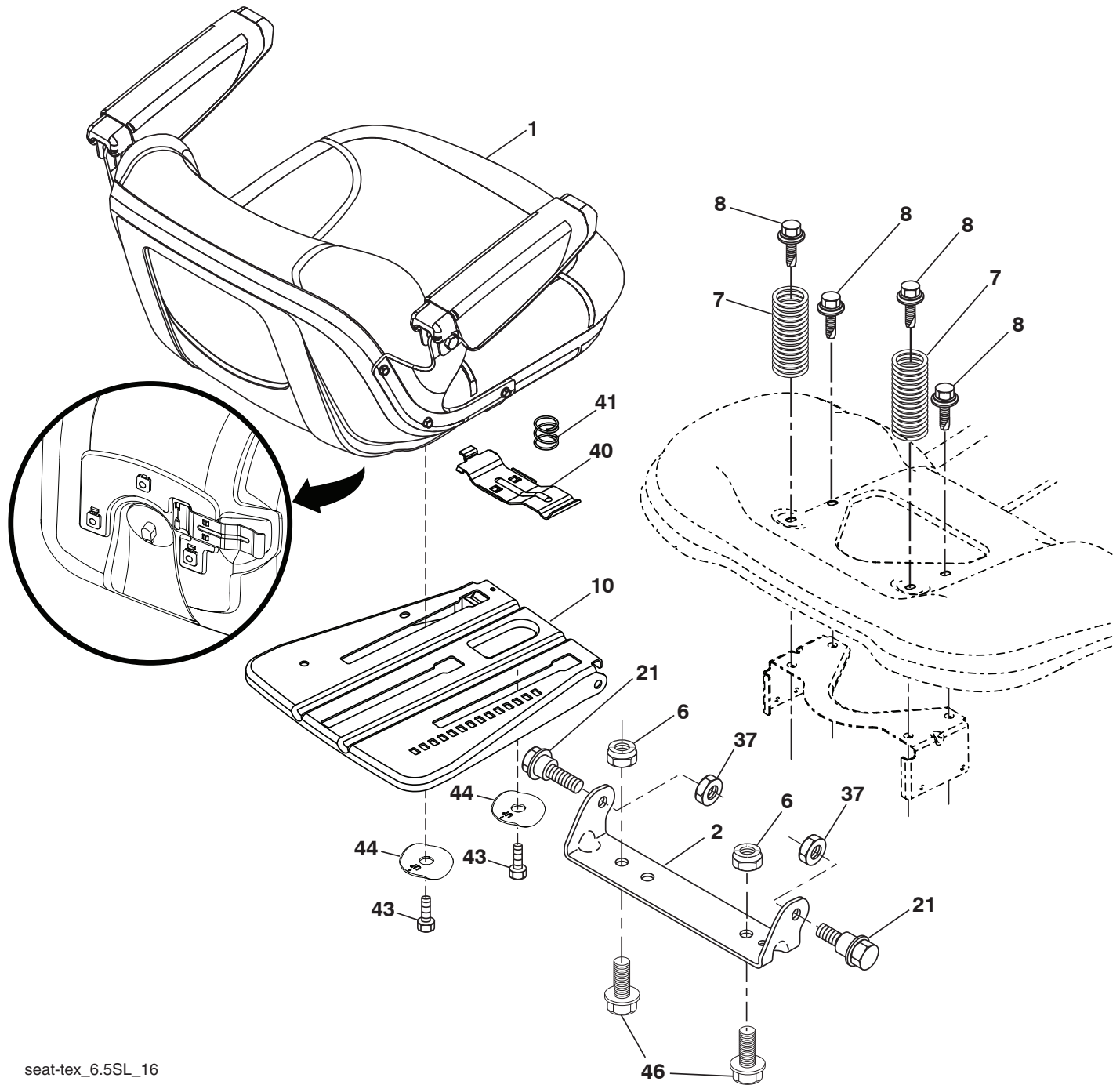
lift-tex_24

KEY NO.	PART NO.	DESCRIPTION
2	532 42 20-27	Shaft Asm., Lift
3	532 19 52-30	Lever Asm., Lift RH
7	580 96 23-01	Grip, Lever
10	532 19 63-14	Spring Torsion
41	532 17 59-94	Nut, Lift Link
87	532 19 42-09	Pin Cotter 7/16 Bow Tie Lock
88	532 41 07-10	Spring Lift Assist
89	819 19 19-12	Washer Clear Zinc

KEY NO.	PART NO.	DESCRIPTION
91	532 40 34-07	Link Lift Susp Mower Rear
96	532 19 52-63	Bushing, Spherical
97	817 00 06-12	Screw 3/8-16 x .75
98	574 82 25-01	Link Lift Susp. Front Mower
114	873 36 07-00	Nut Jam 7/16-20

NOTE: All component dimensions given in U.S. inches
 1 inch = 25.4 mm

**TRACTOR - - MODEL NO. TS 348 (96041039800), PRODUCT NO. 960 41 03-98
SEAT ASSEMBLY 42**



seat-tex_6.5SL_16

KEY NO.	PART NO.	DESCRIPTION
1	588 55 67-01	Seat
2	532 18 01-66	Bracket Pivot Fender
6	873 80 06-00	Nut, Lock W/Ins. 3/8-16 unc
7	589 48 35-01	Spring, Seat Cprsn
8	532 17 18-77	Bolt 5/16-18 unc x 3/4 w/Sems
10	587 23 20-02	Pan, Seat
21	587 90 78-01	Bolt, Shoulder 5/16-18 x 5/8
37	873 80 05-00	Nut, Lock 5/16-18 unc

KEY NO.	PART NO.	DESCRIPTION
40	532 43 98-71	Handle Slide Seat
41	532 19 82-00	Spring Latch Seat
43	874 76 06-12	Bolt Fin Hex 3/8-16 unc x 3/4
44	501 05 18-01	Washer Winged 3/8 ID 1.5 OD
46	588 09 04-01	Bolt 3/8-16x1, 1.25 OD Wshr Sems

NOTE: All component dimensions given in U.S. inches
1 inch = 25.4 mm

