

ILLUSTRATED PARTS LIST

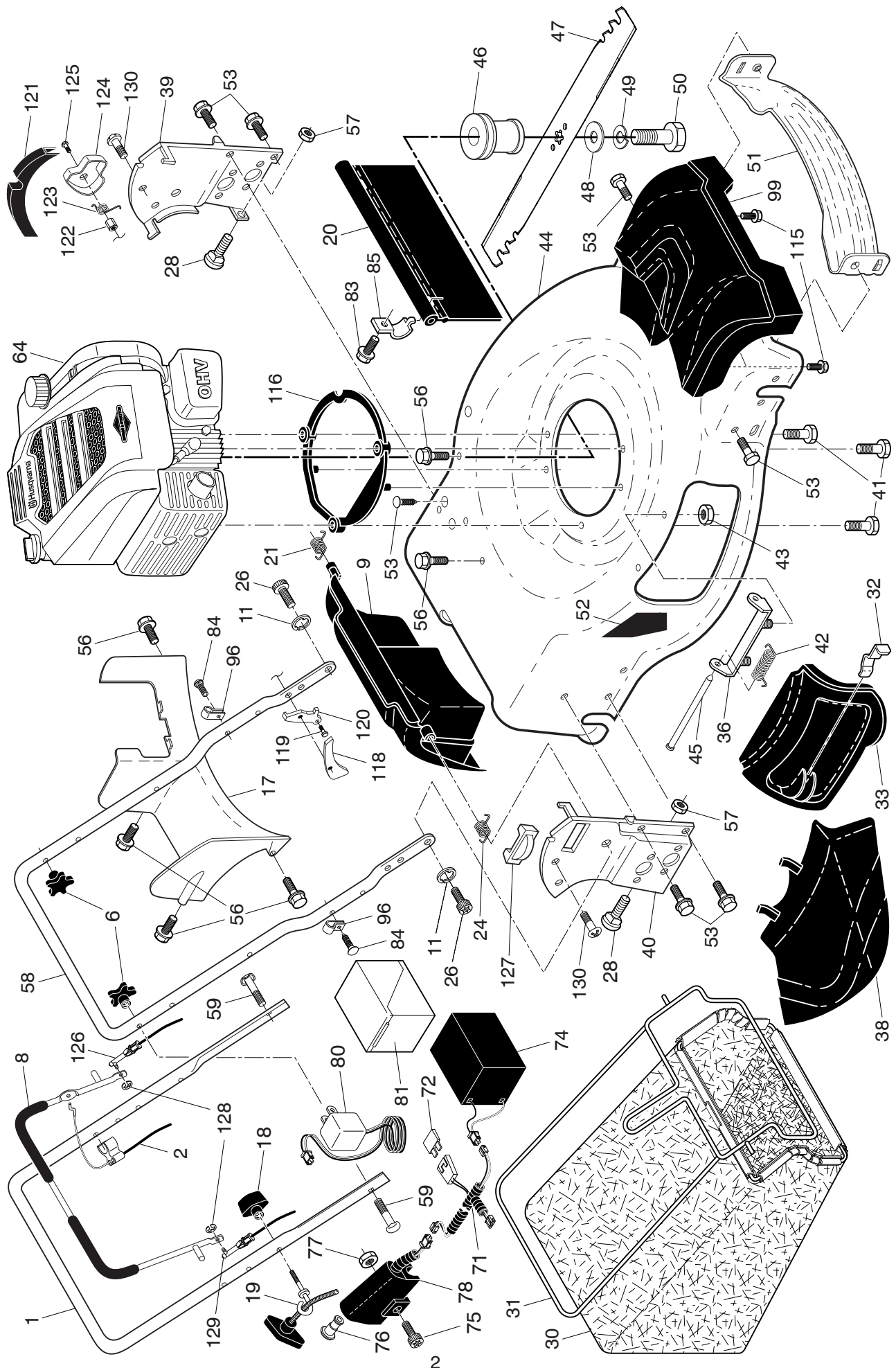


**ROTARY LAWN MOWER**

**MODEL NUMBER: HU725AWDEX**

**MFG. ID. NUMBER: 96143012400**

**HUSQVARNA ROTARY LAWN MOWER - MODEL NUMBER HU725AWDEX (MFG. ID. NUMBER 96143012400)**

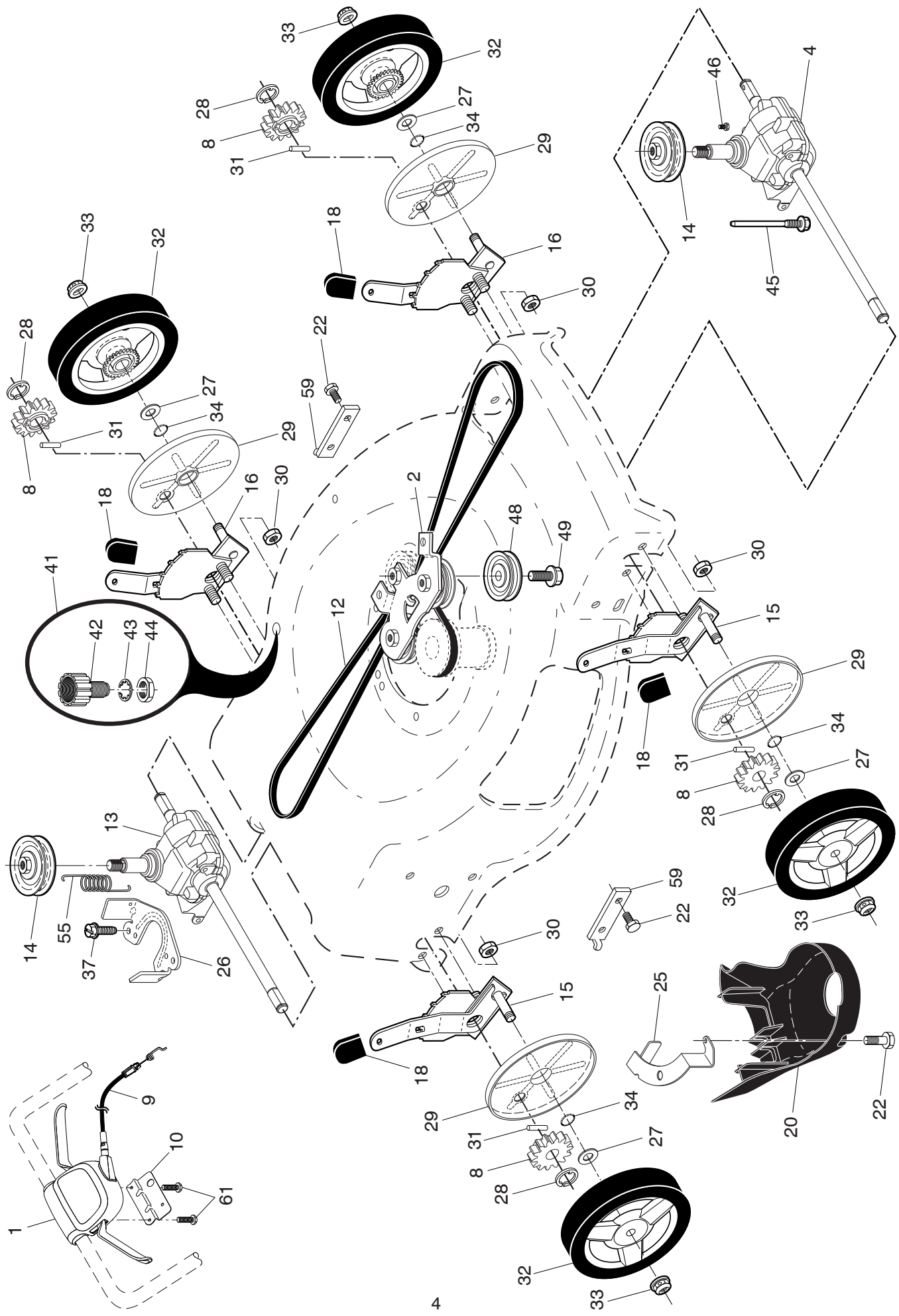


# HUSQVARNA ROTARY LAWN MOWER - MODEL NUMBER HU725AWDEX (MFG. ID. NUMBER 96143012400)

KEY NO.	PART NO.	DESCRIPTION	KEY NO.	PART NO.	DESCRIPTION	KEY NO.	PART NO.	DESCRIPTION
1	580 63 87-06	Upper Handle Assembly	53	817 00 05-10	Screw	586 80	85-01	Cover, EZ Store, Inside, RH
2	532 44 03-86	Cable, Engine Zone Control	56	817 41 13-12	Screw, Hex Washer Head #13 x 3/4			(not shown)
6	532 18 23-98	Handle Knob						Bolt, Pawl
8	585 25 18-06	Control Bar	57	532 15 53-77	Nut, Hex	119	585 48 76-01	Bolt, Pawl
9	585 84 76-04	Rear Door Assembly	58	585 25 07-02	Handle, Lower	120	585 25 09-01	Pawl, LH (shown)
11	579 48 28-01	E-Ring, Door/Handle Pivot	59	532 19 15-74	Bolt, Handle		585 25 10-01	Pawl, RH (not shown)
17	581 78 21-01	Rear Baffle	64	- - -	Engine, Briggs & Stratton, Model Number 104M05-0073-F1	121	585 79 71-01	Bracket, Grassbag, LH (shown)
18	581 91 26-01	T-Knob			(For engine service and replacement parts, call Briggs & Stratton at 1-800-233-3723)		585 79 71-02	Bracket, Grassbag, RH (not shown)
19	581 90 21-01	Rope Guide			Wiring Harness		585 48 77-01	Nut, Hex, M6
20	532 44 45-01	Rear Skirt	71	587 93 44-01	Fuse, 40 Amp	122	585 48 83-01	Spring, Torsion, LH (shown)
21	532 41 99-49	Spring, Rear Door, LH, Black	72	532 42 59-37	Battery		585 45 46-01	Spring, Torsion, RH (not shown)
24	532 41 99-48	Spring, Rear Door, RH, Grey	74	532 43 15-84	Bolt M6 x 40	124	586 79 44-01	Cover, EZ Store, Outside, LH (shown)
26	532 41 99-45	Screw, Rear Door/Handle Pivot	75	532 44 66-94	Starter Button		586 79 43-01	Cover, EZ Store, Outside, RH
28	586 21 25-01	Bolt, Carriage 5/16-18 x 5/8	76	580 91 52-02	Nut, Hex M6			(not shown)
30	580 94 34-08	Grassbag	77	532 44 66-95	Electric Start Assembly (Includes Switch and Switch Housing)	125	585 54 79-01	Screw, Pan Head, M6
31	585 05 47-02	Frame, Grass Catcher	78	587 93 43-01	Charger, Battery	126	585 25 16-01	Cable, EZ Store, LH
32	532 44 11-92	Latch, Mulcher Door			Box, Battery	127	585 25 24-01	Lift Assembly, Rear Door
33	532 41 99-27	Mulcher Door	80	587 00 71-01	Screw, Hex Washer Head	128	585 98 47-01	E-Ring
36	532 17 57-35	Bracket, Hinge	81	585 15 24-02	Fastener, Push	129	585 25 17-05	Cable, EZ Store, RH
38	532 42 61-29	Discharge Deflector	83	532 75 00-97	Mounting Bracket, Rear Skirt	130	532 14 18-41	Screw
39	585 25 04-02	Handle Bracket, LH	84	532 42 81-24	Clip, Cable	- -	115 86 41-96	Operator's Manual, English / Spanish
40	585 25 03-02	Handle Bracket, RH	85	532 43 45-30	Front Shroud Assembly	- -	115 86 41-31	Operator's Manual, French
41	532 85 09-99	Screw, Dogpoint 3/8-16 x 1-1/8	88	581 74 56-01	Screw	- -	115 86 41-59	Operator's Manual, Portuguese
42	532 19 30-00	Spring, Hinge	115	581 33 00-01	Spacer, Engine Cover, EZ Store, Inside, LH (shown)			
43	532 43 81-30	Nut, Hex	116	581 74 56-01				
44	581 70 83-54	Kit, Lawn Mower Housing	118	586 80 86-01				
45	532 17 56-50	Rod, Hinge						
46	581 65 09-01	Blade Adapter / Pulley	96	532 19 79-91				
47	587 19 96-01	Blade, 22"	99	585 66 87-01				
48	532 85 10-74	Washer, Hardened	115	581 33 00-01				
49	532 85 02-63	Washer, Helical	116	581 74 56-01				
50	532 17 96-17	Bolt, Hex Head, Grade 8 3/8-24 x 1-3/8	118	586 80 86-01				
51	532 43 05-99	Front Baffle						
52	532 18 21-66	Decal, Warning, Cut Finger						

**NOTE:** All component dimensions given in U.S. inches. 1 inch = 25.4 mm. **IMPORTANT:** Use only Original Equipment Manufacturer (O.E.M.) replacement parts. Failure to do so could be hazardous, damage your lawn mower and void your warranty.

**HUSQVARNA ROTARY LAWN MOWER - MODEL NUMBER HU725AWDEX (MFG. ID. NUMBER 96143012400)**



# HUSQVARNA ROTARY LAWN MOWER - MODEL NUMBER HU725AWDEX (MFG. ID. NUMBER 96143012400)

KEY NO.	PART NO.	DESCRIPTION	KEY NO.	PART NO.	DESCRIPTION
1	501 40 75-05	Drive Control Assembly (Includes Cable)	28	812 00 00-58	E-Ring 7/16
2	586 07 28-02	Mounting Bracket, Idler Pulleys	29	581 84 04-01	Cover, Dust, Wheel
4	589 59 92-01	Gearcase Assembly, Front, Complete	30	532 43 81-30	Nut, Hex
8	532 40 48-35	Pinion	31	532 40 48-45	Pawl, Drive
9	581 95 21-01	Cable, Drive	32	580 36 53-01	Wheel & Tire Assembly
10	587 24 93-02	Mounting Bracket, Drive Control	33	532 40 91-48	Nut, Flangelock 3/8-16
12	580 36 46-03	Belt, Drive	34	532 19 74-80	O-Ring
13	581 68 08-01	Gearcase Assembly, Rear, Complete	37	532 16 34-09	Screw, Hex Washer Head #13 x 3/4
14	586 96 30-01	Pulley, Drive	41	532 42 11-14	Kit, Water Washout Assembly
15	581 49 79-08	Wheel Adjuster Assembly, RH	42	532 41 97-35	Fitting, Water Washout
16	581 49 79-07	Wheel Adjuster Assembly, LH	43	532 41 55-85	Washer, Lock, Internal Tooth
18	532 70 10-37	Knob, Wheel Adjuster	44	532 41 55-86	Locknut, Hex, with O-Ring
20	580 80 69-01	Debris Shield	45	587 43 82-01	Belt Keeper, Gearcase, Front
22	817 00 05-10	Screw, Hex Head 1/4-20	46	584 29 94-01	Screw, Hi-Lo Thread 5/16 x 1
25	532 42 60-65	Mounting Bracket, Debris Shield	48	587 97 30-01	Pulley Assembly, Idler
26	581 15 25-02	Belt Keeper, Gearcase, Rear	49	581 33 45-01	Screw, Hi-Lo Thread #12 x 5/8
27	532 06 77-25	Washer, Flat	55	581 35 13-01	Spring, Tension
			59	532 44 21-13	Support Bracket
			61	532 18 16-98	Screw

**NOTE:** All component dimensions given in U.S. inches. 1 inch = 25.4 mm. **IMPORTANT:** Use only Original Equipment Manufacturer (O.E.M.) replacement parts. Failure to do so could be hazardous, damage your lawn mower and void your warranty.