

ILLUSTRATED PARTS LIST

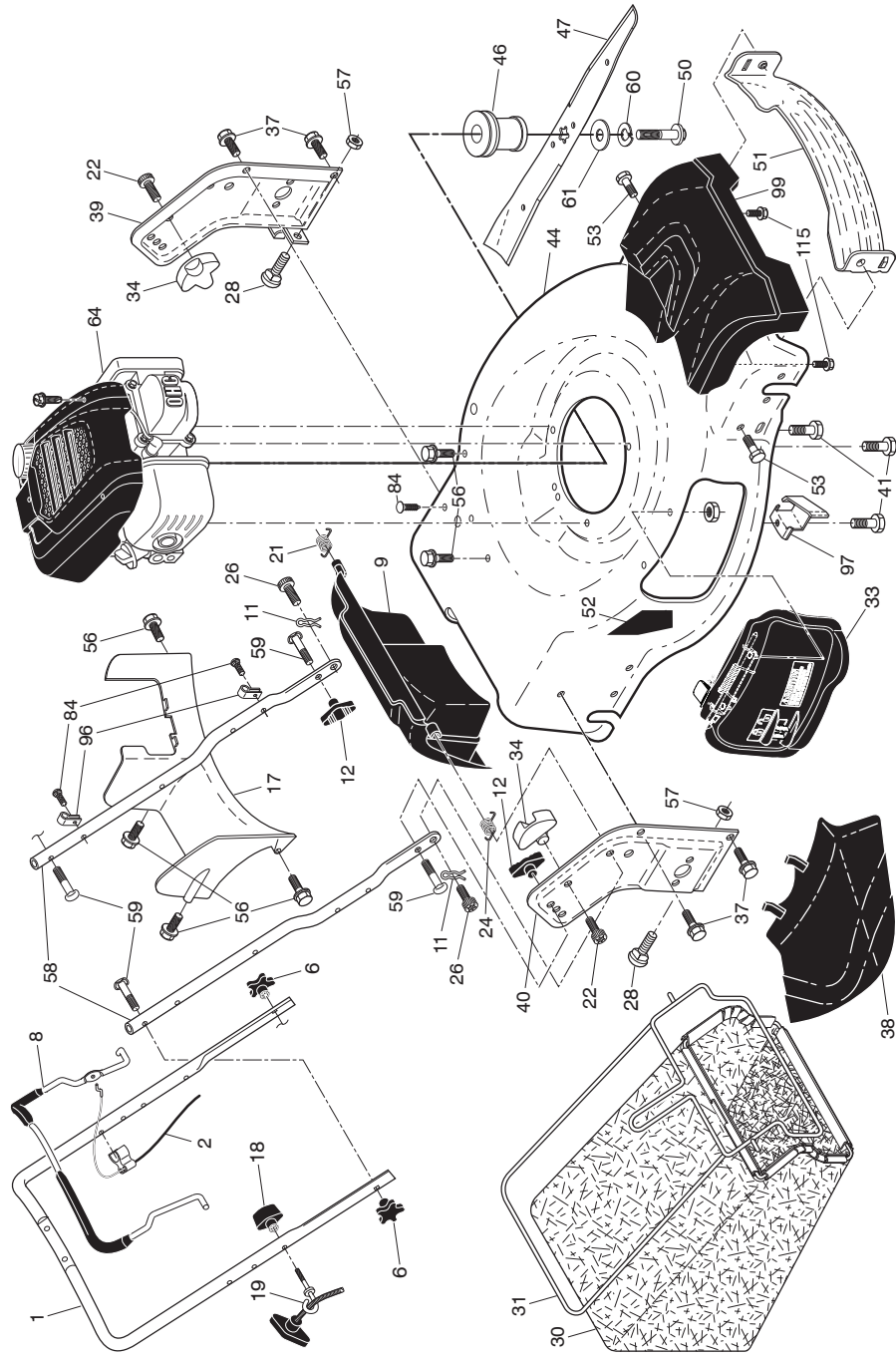


ROTARY LAWN MOWER

MODEL NUMBER: **LC 356V**

MFG. ID. NUMBER: **96141021200**

HUSQVARNA ROTARY LAWN MOWER - - MODEL NUMBER LC 356V (MFG. ID. NO. 96141021200)



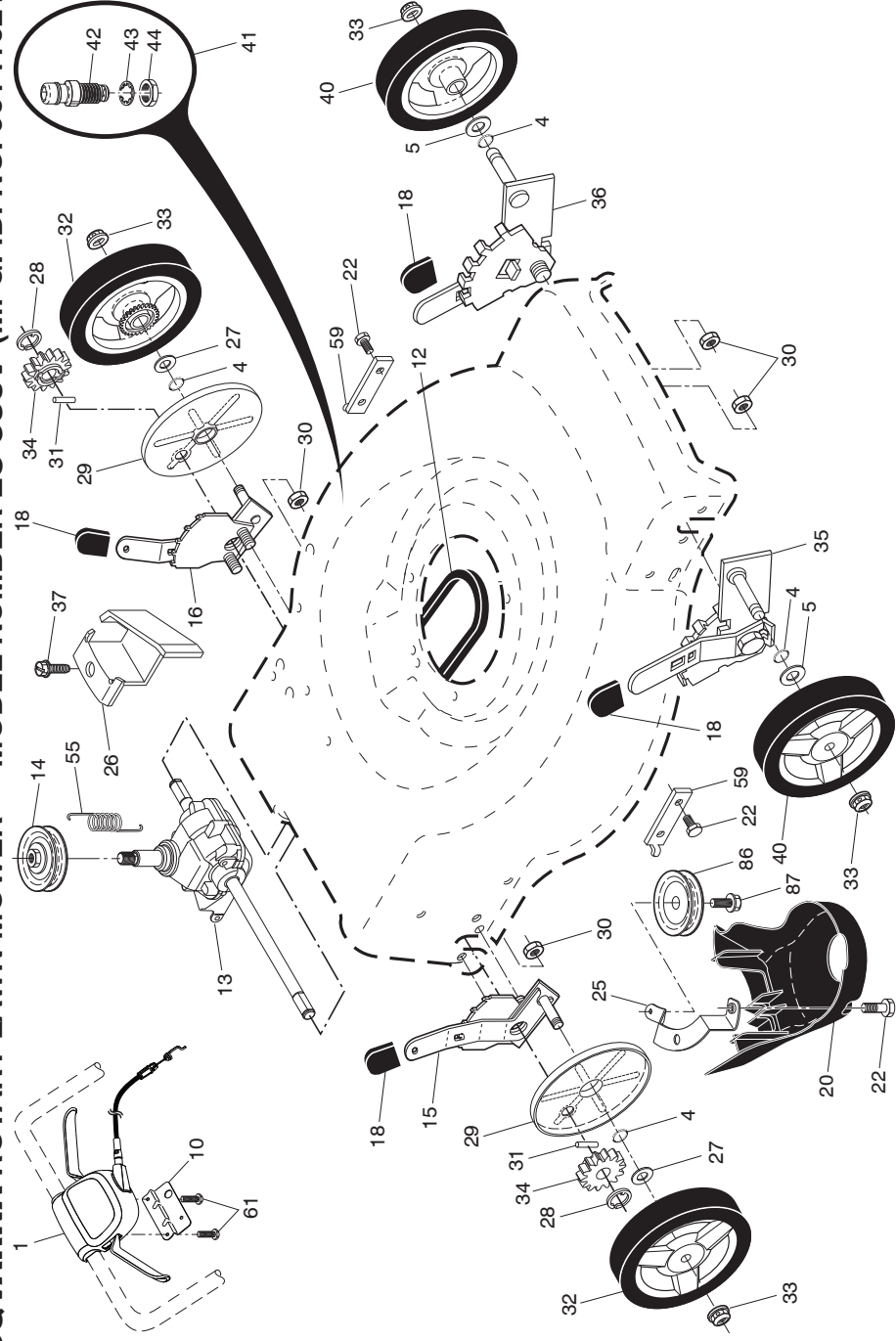
HUSQVARNA ROTARY LAWN MOWER - - MODEL NUMBER LC 356V (MFG. ID. NO. 96141021200)

KEY NO.	PART NO.	DESCRIPTION	KEY NO.	PART NO.	DESCRIPTION	KEY NO.	PART NO.	DESCRIPTION
1	585 85 48-06	Upper Handle Assembly	38	532 42 61-29	Discharge Deflector	61	532 85 10-74	Washer, Hardened
2	596 28 84-01	Cable, Engine Zone Control	39	585 90 07-03	Handle Bracket, LH	64	---	Engine, Honda, Model No. GCV170-S3HB (Order parts from Honda)
6	532 18 23-98	Handle Knob, Star	40	585 90 08-03	Handle Bracket, RH			
8	587 68 93-02	Control Bar	41	532 15 04-06	Screw, Dogpoint			
9	532 43 13-91	Rear Door Assembly	44	581 70 83-27	3/8-16 x 1-1/8 Kit, Lawn Mower Housing	84	532 42 81-24	Fastener, Push
11	532 42 55-75	Hairpin, Door/Handle Pivot	46	591 34 47-01	Blade Adapter / Pulley	96	532 19 79-91	Clip, Cable
12	532 19 19-38	Handle Knob, Standard	47	532 40 67-13	Blade, 22"	97	581 11 53-02	Belt Keeper
17	581 78 21-01	Rear Baffle	50	532 85 10-84	Screw, Machine, Flanged	99	585 66 87-02	Front Shroud Assembly
18	581 91 26-01	T-Knob			Hex Head, with Nylon Patch, Grade 8, 3/8-24 x 1-1/8	115	584 29 94-01	Screw
19	581 90 21-01	Rope Guide			Front Baffle	--	532 42 38-49	Bag of Parts (Includes Key Numbers 12 and 59)
21	532 41 99-49	Spring, Rear Door, LH, Black	51	532 43 05-99	Decal, Danger	--	114 06 24-20	Operator's Manual, European
22	532 14 18-41	Screw, Panhead, Torx #20	52	532 18 21-66	Screw	--	114 06 24-10	Operator's Manual, Scandinavian
24	532 41 99-48	Spring, Rear Door, RH, Grey	53	817 00 05-10	Screw, Hex Washer Head #13 x 3/4	--	114 06 24-50	Operator's Manual, East Bloc
26	532 41 99-45	Screw, Rear Door / Handle Pivot	56	817 41 13-12	Nut, Hex	--	114 06 24-40	Operator's Manual, Baltic
28	586 21 25-01	Bolt, Carriage 5/16-18 x 5/8	57	532 15 53-77	Lower Handle Asm. (Includes plugs)	--	114 06 24-53	Operator's Manual, Ukrainian / Turkish
30	580 94 34-05	Grassbag	58	593 27 04-03	Handle Bolt			
31	585 05 47-02	Frame, Grass Catcher	59	532 19 15-74	Washer, Lock			
33	593 24 11-02	Mulcher Door Kit	60	532 85 02-63				
34	532 43 81-34	Pivot Bracket						
37	817 00 05-10	Screw, Hex Head 1/4-20						



NOTE: All component dimensions given in U.S. inches. 1 inch = 25.4 mm. **IMPORTANT:** Use only Original Equipment Manufacturer (O.E.M.) replacement parts. Failure to do so could be hazardous, damage your lawn mower and void your warranty.

HUSQVARNA ROTARY LAWN MOWER -- MODEL NUMBER LC 356V (MFG. ID. NO. 96141021200)



4

HUSQVARNA ROTARY LAWN MOWER -- MODEL NUMBER LC 356V (MFG. ID. NO. 96141021200)

KEY NO.	PART NO.	DESCRIPTION	KEY NO.	PART NO.	DESCRIPTION
1	589 81 88-08	Drive Control Assembly (Includes Cable)	30	532 19 17-30	Nut, Hex
4	532 19 74-80	O-Ring	31	532 40 48-45	Pawl, Drive
5	532 08 83-48	Washer, Flat	32	581 68 51-01	Wheel & Tire Assembly, Rear
10	587 24 93-02	Bracket	33	532 40 91-48	Nut, Flangelock 3/8-16
12	580 36 46-11	Belt, Drive	34	532 40 48-35	Pinion
13	581 68 08-01	Gear Case Assembly, Complete	35	532 43 11-38	Kit, Wheel Adjuster, Front, RH
14	586 96 90-01	Pulley, Drive	36	532 43 11-39	Kit, Wheel Adjuster, Front, LH
15	581 49 79-08	Wheel Adjuster, Rear, RH	37	532 16 34-09	Screw, Hi-Lo Thread
16	581 49 79-07	Wheel Adjuster, Rear, LH	40	532 41 08-31	Wheel & Tire Assembly, Front
18	532 70 10-37	Selector Knob	41	532 43 84-89	Kit, Water Washout Assembly
20	580 80 69-01	Debris Shield	42	532 43 49-94	Fitting, Water Washout
22	817 00 05-10	Bolt, Hex Head 5/16-18	43	532 41 55-85	Washer, Lock, Internal Tooth
25	581 31 38-02	Mounting Bracket, Debris Shield	44	532 41 55-86	Locknut, Hex, with O-Ring
26	589 31 83-02	Belt Keeper	55	581 35 13-01	Spring, Return
27	532 06 77-25	Washer	59	532 44 21-13	Support Bracket, Front Axle
28	812 00 00-58	E-Ring 7/16	61	532 18 16-98	Screw
29	581 84 04-01	Cover, Dust, Wheel	86	587 96 92-01	Pulley, Idler
			87	581 12 76-01	Screw

5

NOTE: All component dimensions given in U.S. inches. 1 inch = 25.4 mm. **IMPORTANT:** Use only Original Equipment Manufacturer (O.E.M.) replacement parts. Failure to do so could be hazardous, damage your lawn mower and void your warranty.