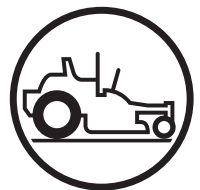




**Husqvarna**<sup>®</sup>



## **Parts Manual**

**V 548 / 967 672501-00**

Please read the operator manual carefully and make sure you understand the instructions before using the machine.

Gasoline containing a maximum of 10% ethanol (E10) is permitted for use in this machine. The use of gasoline with more than 10% ethanol (E10) will void the product warranty.



When you need spare parts or support in service questions, warranty issues, etc., please consult the following professional:

|   |        |              |
|---|--------|--------------|
|   |        |              |
| This manual belongs to the machine with the manufacturing number: | Engine | Transmission |

### Manufacturing Number

The machine's manufacturing number can be found on the printed plate affixed to the engine compartment.

Stated on the plate, from the top are:

- The machine's type designation (I.D.)
- The manufacturer's type number (Model)
- The machine's serial number (Serial no.)

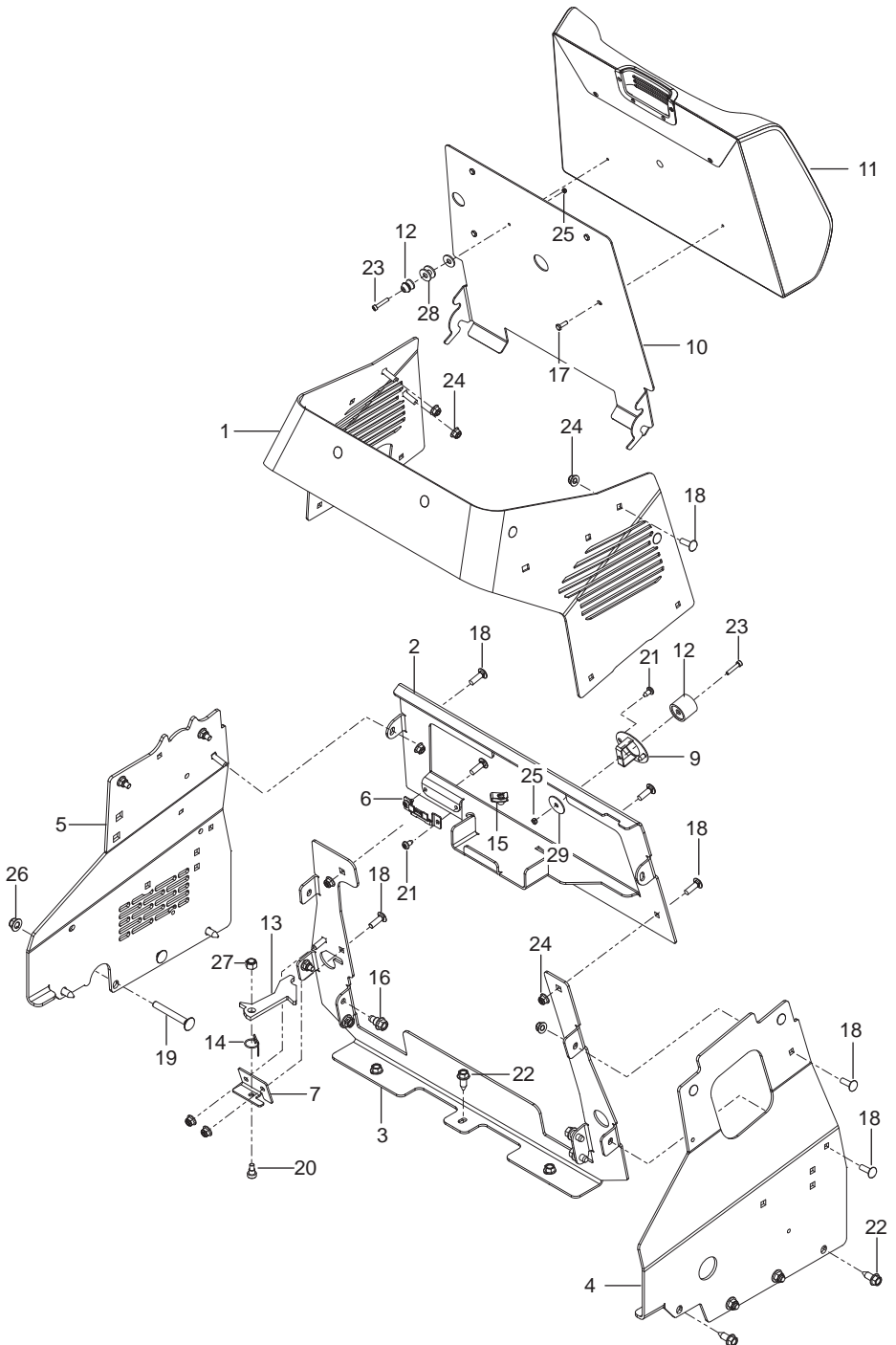
*Please have the type designation and serial number available when ordering spare parts.*

# CONTENTS

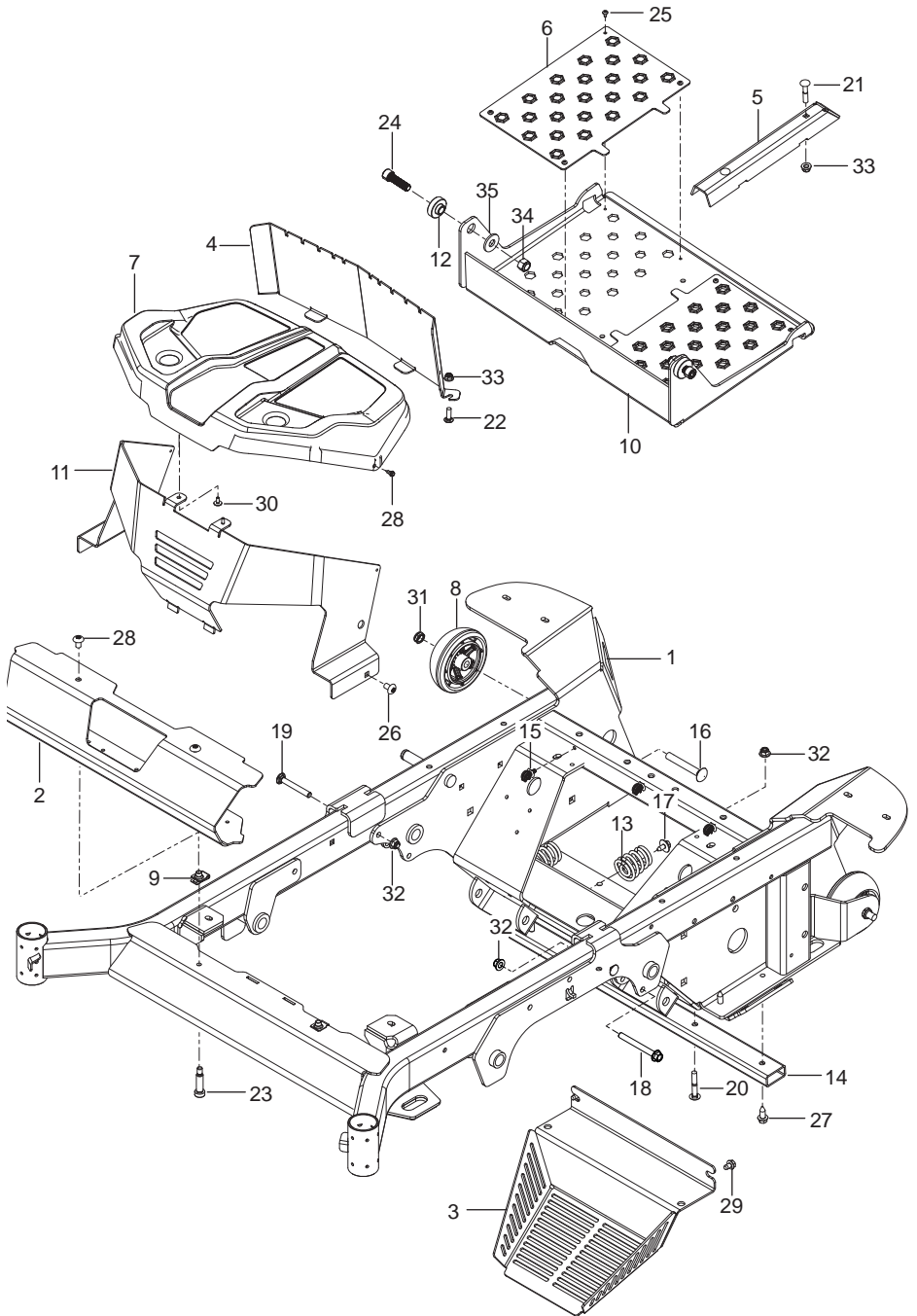
|   |    |
|---|----|
| CHASSIS - UPPER .....                   | 4  |
| CHASSIS - LOWER .....                   | 6  |
| ENGINE MOUNTING, GUARDS & MUFFLER ..... | 8  |
| STEERING .....                          | 10 |
| IGNITION SYSTEM.....                    | 12 |
| FUEL SYSTEM.....                        | 14 |
| PARK BRAKE .....                        | 16 |
| HYDRAULIC PUMP-MOTOR.....               | 18 |
| HYDRAULIC DRIVE.....                    | 20 |
| WHEELS & TIRES .....                    | 22 |
| MOWER LIFT / DECK LIFT.....             | 24 |
| MOWER DECK / CUTTING DECK .....         | 26 |
| BLADE SHAFT .....                       | 28 |
| DECALS .....                            | 30 |

Illustrations may or may not represent the actual assemblies and it is not recommended to use this manual as a guide to assemble or disassemble the mower.

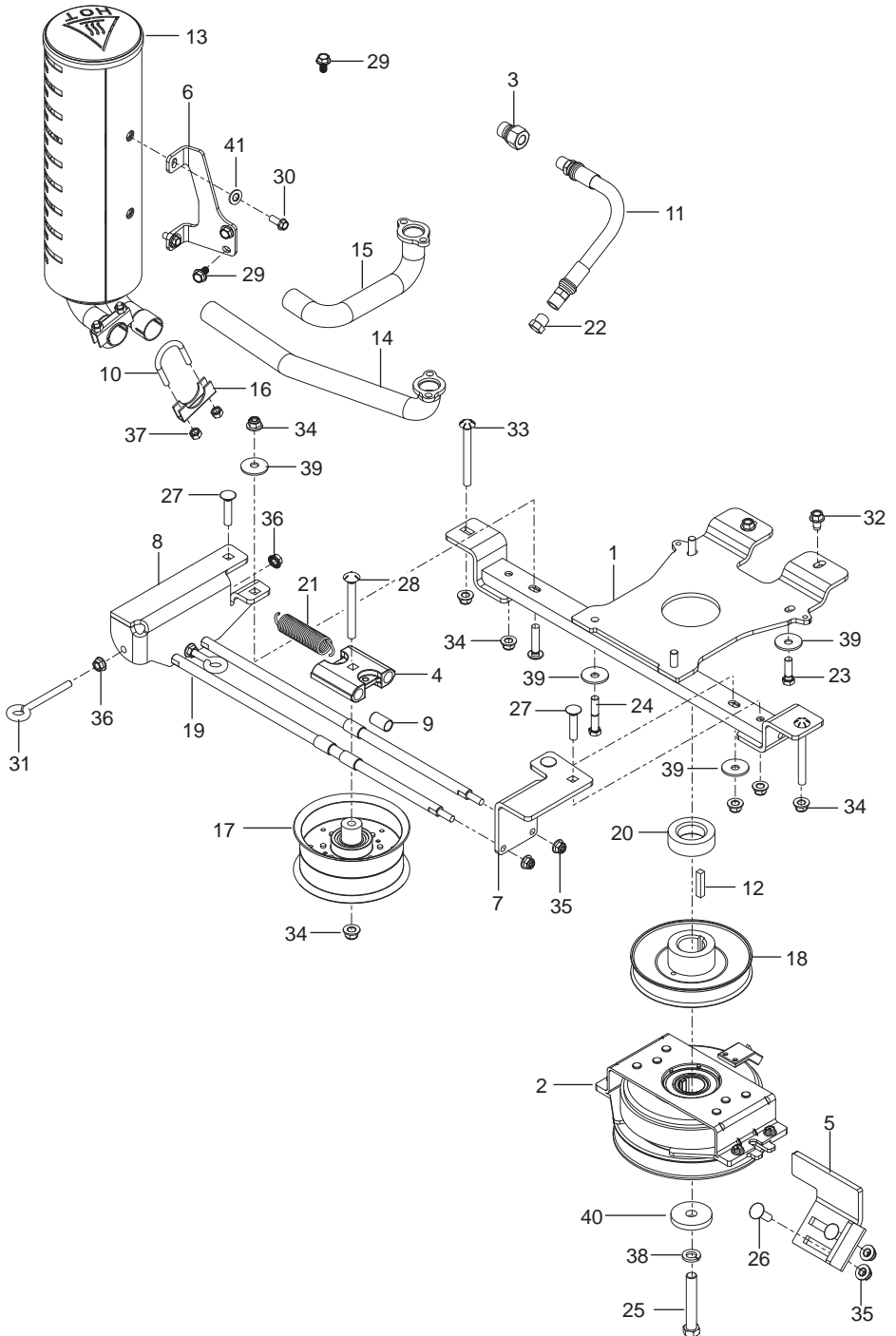
NOTE: All fasteners are Grade 5 unless otherwise specified.



| Ref.                | Part No.     | Qty | Description                             | Kit / Assy Includes   |
|---------------------|--------------|-----|---|-----------------------|
| 1                   | 501 86 31-02 | 1   | Column Front                            |                       |
| 2                   | 590 74 24-06 | 1   | Column Rear Lower                       |                       |
| 3                   | 590 74 25-06 | 1   | Column Rear Upper                       |                       |
| 4                   | 501 86 34-02 | 1   | Column Side Left                        |                       |
| 5                   | 501 86 33-02 | 1   | Column Side Right                       |                       |
| 6                   | 589 50 07-02 | 1   | Bracket, Fuse Relay                     |                       |
| 7                   | 590 78 33-05 | 1   | Bracket, Platform Holdback              |                       |
| 8                   | 532 14 50-06 | 3   | Clip, Push-In Hinged                    |                       |
| 9                   | 592 85 78-01 | 1   | Cradle Holdbacks Ss                     |                       |
| 10                  | 590 74 26-06 | 1   | Door, Column Rear                       |                       |
| 11                  | 590 78 30-01 | 1   | Pad, Operator Cushion                   |                       |
| 12                  | 582 46 17-01 | 1   | Holder Assembly                         |                       |
| 13                  | 590 78 35-05 | 1   | Latch, Platform                         |                       |
| 14                  | 590 79 04-01 | 1   | Spring, Platform Holdback               |                       |
| 15                  | 539 10 47-63 | 1   | Retainer 5/16-18 U Type                 |                       |
| 16                  | 532 19 65-39 | 5   | Bolt 3/8-16 Hex Flange Shoulder         |                       |
| 17                  | 592 85 81-01 | 4   | Bolt 5/16 x 5/8 w/ Loctite              |                       |
| 18                  | 539 10 72-71 | 18  | Bolt 5/16-18 x 1 Round Head Square Neck |                       |
| 19                  | 539 12 27-28 | 4   | Bolt 3/8-16 x 3 Round Head Square Neck  |                       |
| 20                  | 539 11 36-21 | 1   | Bolt 3/8-16 Shoulder                    |                       |
| 21                  | 532 19 98-55 | 4   | Screw 1/4-20 Panhead                    |                       |
| 22                  | 817 00 06-16 | 7   | Screw 3/8-16 x 1 Tap Blk                |                       |
| 23                  | 593 16 74-01 | 2   | Screw Hex Head                          |                       |
| 24                  | 539 11 28-99 | 25  | Nut 5/16-18 Hex Flange Nyloc            |                       |
| 25                  | 593 16 73-01 | 2   | Nut M5 Lock                             |                       |
| 26                  | 521 99 65-01 | 4   | Nut 3/8-16 Hex Flange Nyloc             |                       |
| 27                  | 539 97 69-79 | 1   | Nut 3/8-16 Hex Nyloc                    |                       |
| 28                  | 593 17 51-01 | 3   | Washer                                  |                       |
| 29                  | 590 68 60-01 | 1   | Washer 1/4 x 1-1/2                      |                       |
| <b>SERVICE KITS</b> |              |     |   |                       |
|                     | 593 60 24-01 | 1   | Holdback Stem, Assembly                 | 12, 23, 25, 28        |
|                     | 593 60 25-01 | 1   | Holdback Base, Assembly                 | 9, 12, 21, 23, 25, 29 |

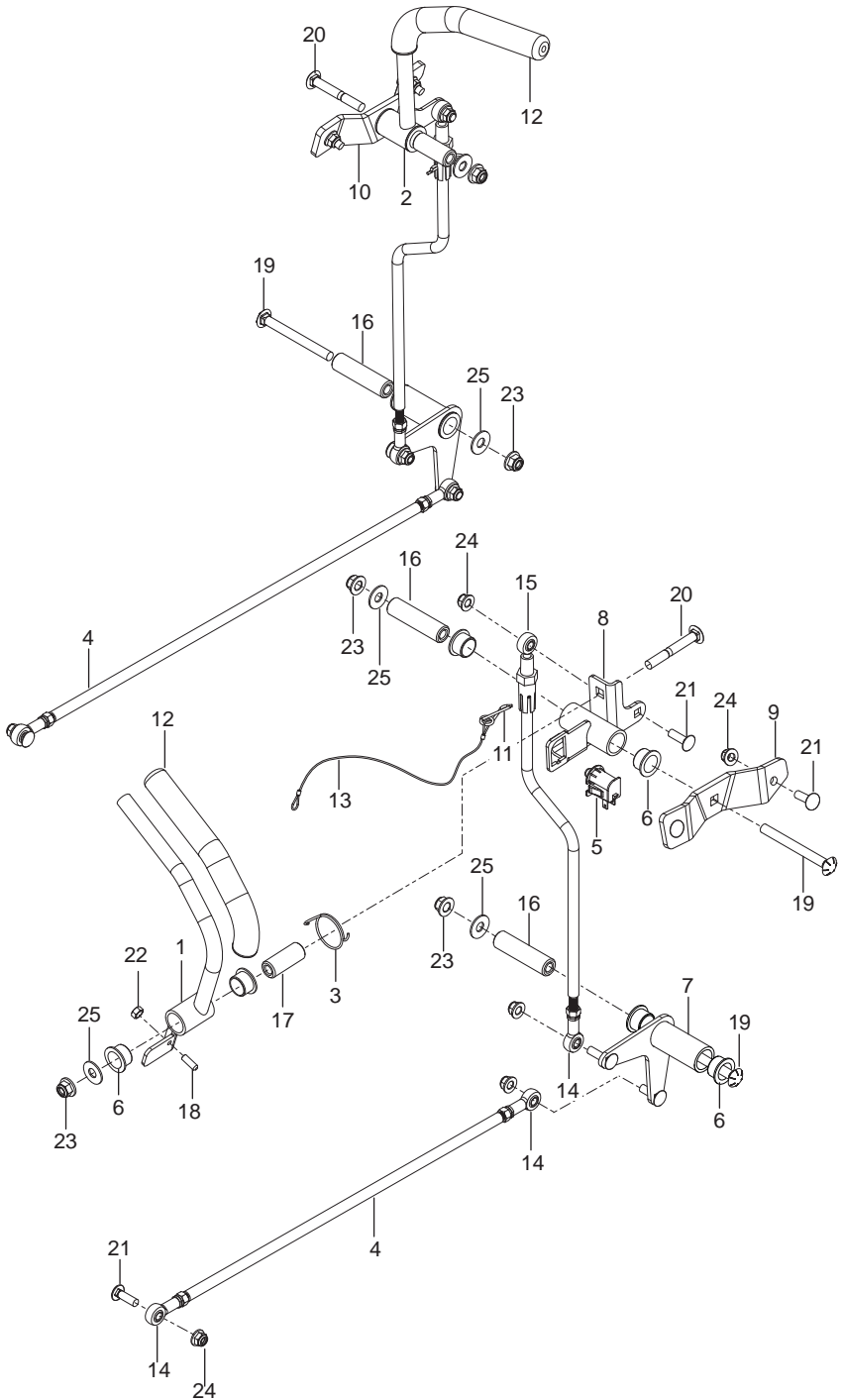


| Ref. | Part No.     | Qty | Description                                | Kit / Assy Includes |
|------|--------------|-----|--|---------------------|
| 1    | 590 78 27-02 | 1   | Chassis                                    |                     |
| 2    | 590 74 31-06 | 1   | Cover Front                                |                     |
| 3    | 590 74 27-02 | 1   | Cover, PTO                                 |                     |
| 4    | 590 91 53-02 | 1   | Plate, Baffle                              |                     |
| 5    | 590 74 30-06 | 1   | Bracket, Angle                             |                     |
| 6    | 590 78 29-02 | 2   | Footplate                                  |                     |
| 7    | 589 62 32-01 | 1   | Cover, Pump                                |                     |
| 8    | 589 52 74-01 | 2   | Wheel, Gauge                               |                     |
| 9    | 589 80 68-01 | 2   | Retainer 3/8-16 U-Type                     |                     |
| 10   | 590 74 29-06 | 1   | Plate, Operator                            |                     |
| 11   | 590 81 30-03 | 1   | Shroud, Pump                               |                     |
| 12   | 586 70 17-01 | 2   | Spacer                                     |                     |
| 13   | 589 48 35-01 | 4   | Spring, Tapered                            |                     |
| 14   | 590 78 23-02 | 1   | Tube, Skidplate                            |                     |
| 15   | 592 85 74-01 | 3   | Clip, Cable                                |                     |
| 16   | 592 85 80-01 | 2   | Bolt 1/2-13 x 3-1/2 Round Hd Square Neck   |                     |
| 17   | 532 17 18-77 | 4   | Bolt 5/16-18 x 3/4 Flange Head Serated Blk |                     |
| 18   | 874 49 06-52 | 2   | Bolt 3/8-16 x 3-1/2 Hex Flange Head        |                     |
| 19   | 539 12 27-28 | 2   | Bolt 3/8-16 x 3 Round Head Square Neck     |                     |
| 20   | 872 11 06-18 | 2   | Bolt 3/8-16 x 2-1/4 Round Hd Square Neck   |                     |
| 21   | 872 11 05-14 | 2   | Bolt 5/16 x 18 x 1-3/4 Round Hd Sq Neck    |                     |
| 22   | 872 11 05-08 | 2   | Bolt 5/16-18 x 1 Round Hd Square Neck      |                     |
| 23   | 592 80 76-01 | 2   | Bolt Shoulder 3/8-16                       |                     |
| 24   | 592 85 79-01 | 2   | Bolt 1/2-13 Hex Nyloc Ring                 |                     |
| 25   | 592 85 84-01 | 8   | Screw 10-24 x 3/8 Tap Torx                 |                     |
| 26   | 592 85 82-01 | 4   | Screw 3/8 Torx Thread Roll                 |                     |
| 27   | 817 00 06-16 | 4   | Screw 3/8-16 x 1 Tap Blk                   |                     |
| 28   | 532 18 44-71 | 2   | Screw Shoulder 10/24                       |                     |
| 29   | 539 99 08-58 | 2   | Screw 5/16-18 x 1/2 Thread Roll            |                     |
| 30   | 532 42 17-56 | 2   | Screw #10                                  |                     |
| 31   | 539 10 80-10 | 2   | Nut 1/2-13 Hex Jam Nyl Grade 2             |                     |
| 32   | 521 99 65-01 | 7   | Nut 3/8-16 Hex Flange Nyloc                |                     |
| 33   | 539 11 28-99 | 4   | Nut 5/16-18 Hex Flange Nyloc               |                     |
| 34   | 539 10 13-31 | 2   | Nut 1/2-13 Hex Nyloc                       |                     |
| 35   | 539 10 95-54 | 2   | Washer 1/2 Flat                            |                     |

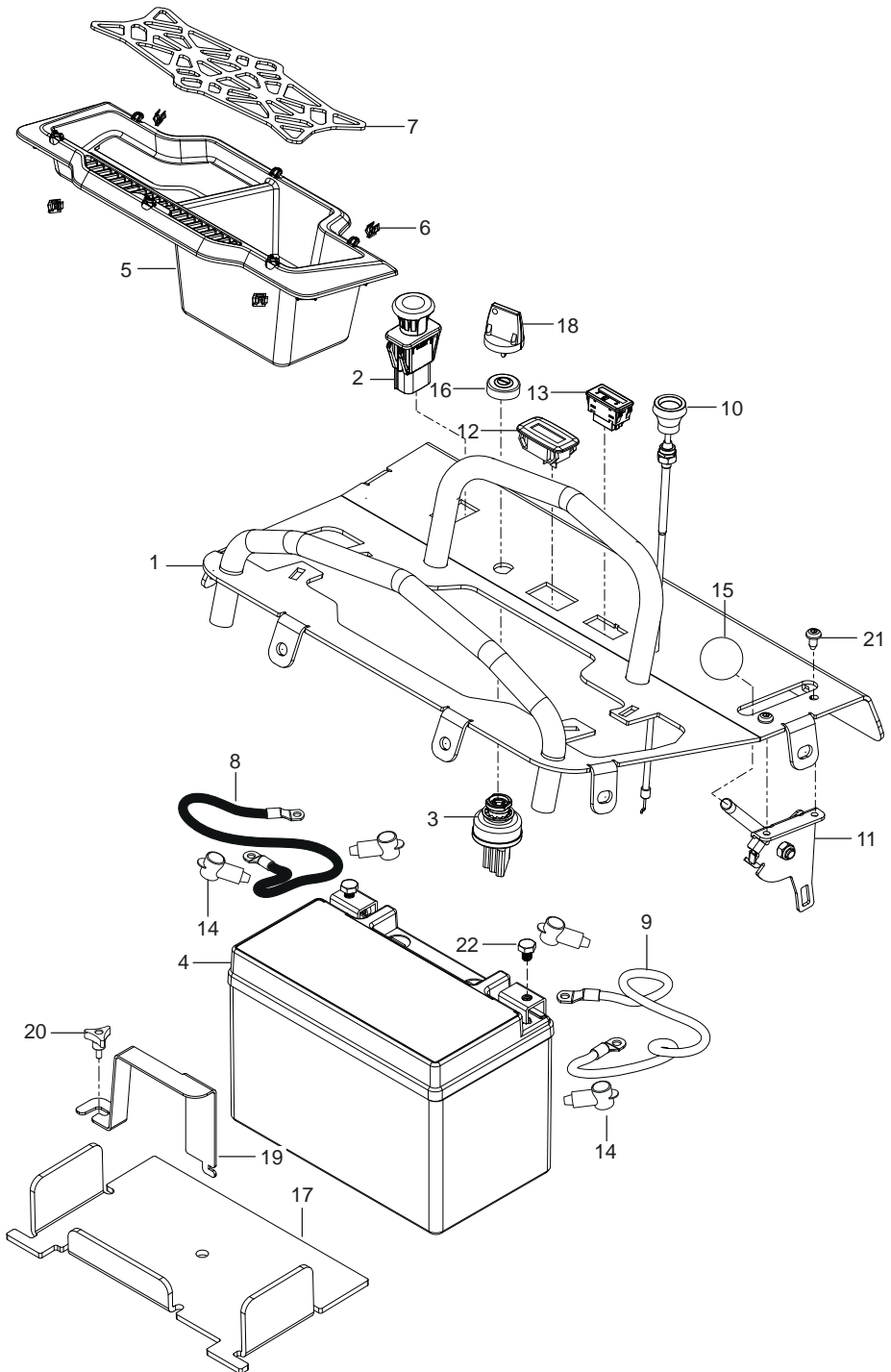




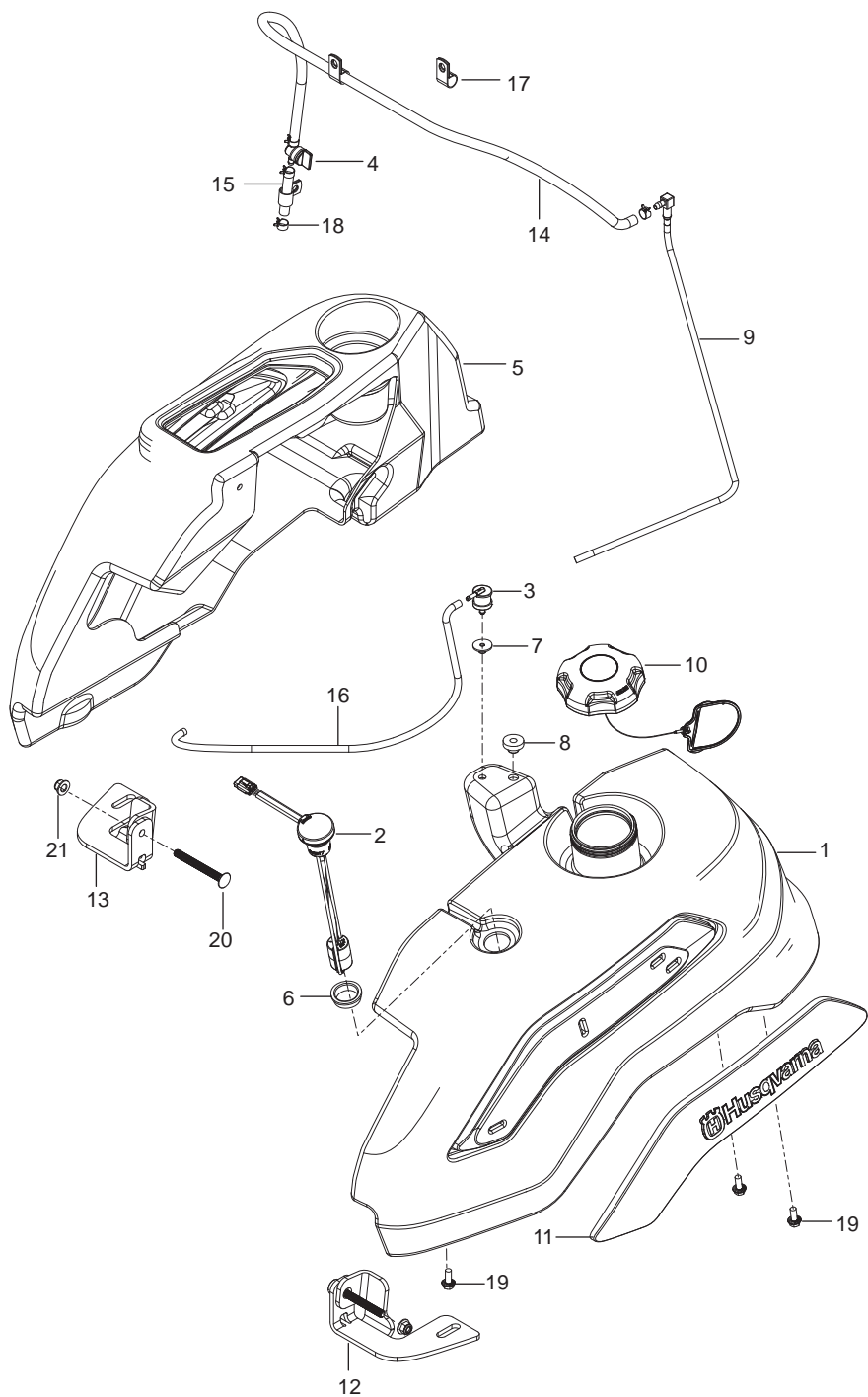
| Ref.                | Part No.     | Qty | Description  | Kit / Assy Includes |
|---------------------|--------------|-----|--|---------------------|
| 1                   | 590 81 29-02 | 1   | Plate, Engine  |                     |
| 2                   | 589 41 46-01 | 1   | Clutch Ogura Gt2 75 6 85" Op   |                     |
| 3                   | 522 59 90-01 | 1   | Adapter, Oil Drain   |                     |
| 4                   | 590 63 56-01 | 1   | Block, Tensioner   |                     |
| 5                   | 589 60 46-02 | 1   | Bracket Clutch   |                     |
| 6                   | 590 90 74-02 | 1   | Bracket Muffler Mount  |                     |
| 7                   | 589 80 73-02 | 1   | Bracket, Tensioner Left  |                     |
| 8                   | 589 80 74-02 | 1   | Bracket, Tensioner Right   |                     |
| 9                   | 590 64 68-01 | 4   | Bushing, Sleeve  |                     |
| 10                  | 590 92 27-01 | 2   | U-Bolt 5/16-18 Muffler   |                     |
| 11                  | 584 82 55-01 | 1   | Assy Oil Drain Hose  |                     |
| 12                  | 539 91 27-57 | 1   | Key Sq 1/4 x 1-1/4   |                     |
| 13                  | 589 72 16-01 | 1   | Muffler, Vertical  |                     |
| 14                  | 589 72 10-01 | 1   | Tube, Muffler Left   |                     |
| 15                  | 589 72 11-01 | 1   | Tube, Muffler Right  |                     |
| 16                  | 590 92 26-01 | 2   | Clamp, Muffler U-Bolt  |                     |
| 17                  | 589 60 38-01 | 1   | Pulley, Flat Idler   |                     |
| 18                  | 510 01 98-01 | 1   | Pulley, Engine   |                     |
| 19                  | 589 81 36-01 | 2   | Shaft, Tensioner   |                     |
| 20                  | 590 68 06-01 | 1   | Spacer, Engine Pulley  |                     |
| 21                  | 589 80 75-01 | 1   | Spring   |                     |
| 22                  | 585 80 71-01 | 1   | Plug, Oil  |                     |
| 23                  | 874 78 06-20 | 2   | Bolt 3/8-16 x 1-1/4 Hex Head   |                     |
| 24                  | 874 78 06-32 | 2   | Bolt 3/8-16 x 2 Hex Head   |                     |
| 25                  | 581 33 28-02 | 1   | Bolt 7/16-20 x 2-1/2 Hex Head  |                     |
| 26                  | 539 99 02-08 | 2   | Bolt 5/16-18 x 1 Round Hd Square Neck  |                     |
| 27                  | 872 11 06-14 | 4   | Bolt 3/8-16 x 1-3/4 Round Hd Square Neck   |                     |
| 28                  | 872 14 06-28 | 1   | Bolt 3/8-16 x 3-1/2 Round Hd Square Neck   |                     |
| 29                  | 590 00 33-01 | 3   | Bolt M8 x 1-1/4 x 16 Serrated Flange   |                     |
| 30                  | 592 85 87-01 | 2   | Bolt 5/16-18 x 3/4 Hex FlangeHead  |                     |
| 31                  | 539 11 55-74 | 2   | Bolt Eye 5/16 x 3-1/2  |                     |
| 32                  | 817 00 06-16 | 2   | Screw 3/8-16 x 1 Tap Blk   |                     |
| 33                  | 589 39 86-02 | 2   | Screw 3/8-16 x 3-3/5 Round Hd  |                     |
| 34                  | 521 99 65-01 | 10  | Nut 3/8-16 Hex Flange Nyloc  |                     |
| 35                  | 539 11 28-99 | 6   | Nut 5/16-18 Hex Flange Nyloc   |                     |
| 36                  | 539 99 05-85 | 4   | Nut 5/16-18 Hex Whizlock   |                     |
| 37                  | 539 99 02-23 | 4   | Nut 5/16-24 Hex  |                     |
| 38                  | 539 99 02-47 | 1   | Washer 7/16 Slotted Lock   |                     |
| 39                  | 539 91 20-63 | 6   | Washer, Cone   |                     |
| 40                  | 539 10 65-04 | 1   | Washer, Harden   |                     |
| 41                  | 539 10 25-93 | 2   | Washer, 3/8 Spring   |                     |
| <b>SERVICE KITS</b> |              |     |  |                     |
|                     | 593 65 05-01 | 1   | Slider, Tensioner Assembly   | 4, 9                |
|                     | 593 65 06-01 | 1   | Clutch, Assembly (includes harness)  | 2                   |
| <b>NOT SHOWN</b>    |              |     |  |                     |
|                     | 592 96 47-01 | 1   | Harness, Clutch  |                     |
|                     | 586 83 97-01 | 2   | Gasket, Exhaust  |                     |
|                     | -----        |     | Engine, Kawasaki FX751V 18.3 kW (24.5 hp)<br>For engine replacement parts, see a Kawasaki dealer |                     |



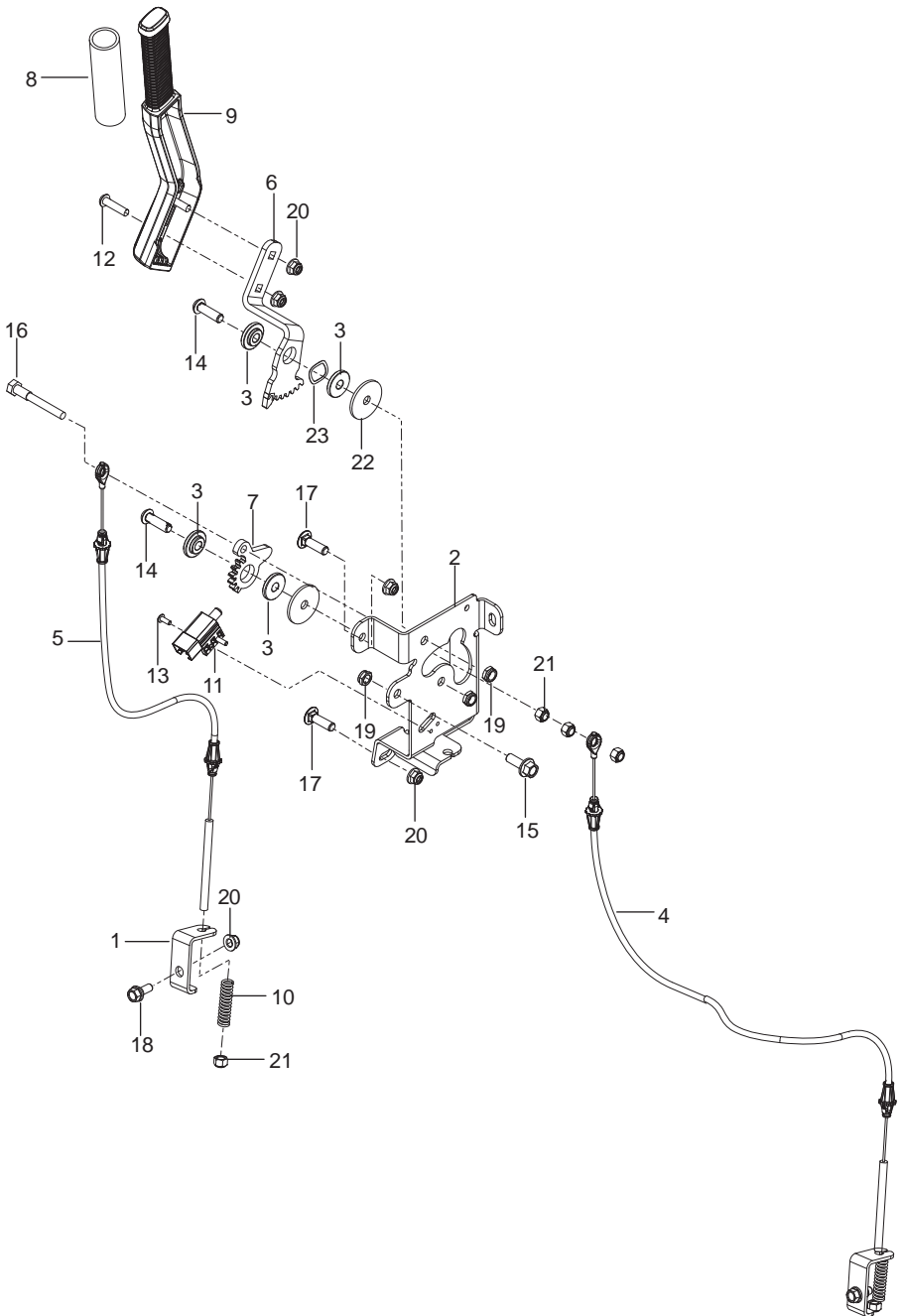
| Ref.                | Part No.     | Qty | Description                                 | Kit / Assy Includes                      |
|---------------------|--------------|-----|---|--|
| 1                   | 590 62 35-02 | 1   | Lever, Control Left                         |  |
| 2                   | 582 68 67-02 | 1   | Lever, Control Right                        |  |
| 3                   | 590 62 45-01 | 1   | Spring, Torsion                             |  |
| 4                   | 582 68 79-01 | 2   | Linkage, Control                            |  |
| 5                   | 532 42 10-62 | 1   | Switch, NC                                  |  |
| 6                   | 539 13 15-18 | 10  | Bearing, Flange                             |  |
| 7                   | 582 68 75-02 | 1   | Bellcrank, Control                          |  |
| 8                   | 590 62 42-02 | 1   | Bellcrank, Controls Blk                     |  |
| 9                   | 590 60 01-02 | 1   | Bracket, Pivot Left                         |  |
| 10                  | 590 60 00-02 | 1   | Bracket, Pivot Right                        |  |
| 11                  | 582 55 19-01 | 2   | Clip, Retainer                              |  |
| 12                  | 590 62 39-01 | 2   | Grip  |  |
| 13                  | 539 10 50-59 | 2   | Lanyard                                     |  |
| 14                  | 588 69 26-01 | 6   | Rod End, Female                             |  |
| 15                  | 588 69 25-02 | 2   | Rod End, Male                               |  |
| 16                  | 582 68 73-01 | 3   | Spacer, Pivot Long                          |  |
| 17                  | 582 68 73-02 | 2   | Spacer, Pivot Short                         |  |
| 18                  | 592 72 72-01 | 1   | Screw 1/4-20 x 3/4 Hex Set                  |  |
| 19                  | 589 39 86-02 | 3   | Bolt 3/8-16 x 3-3/4 Round Hd Square Neck    |  |
| 20                  | 872 11 06-22 | 2   | Bolt 3/8-16 x 2-3/4 Round Hd Sq Neck Short. |  |
| 21                  | 539 10 72-71 | 12  | Bolt 5/16-18 x 1 Round Hd Square Neck       |  |
| 22                  | 873 22 04-00 | 1   | Nut 1/4-20 Hex                              |  |
| 23                  | 521 99 65-01 | 5   | Nut 3/8-16 Hex Flange Nyloc                 |  |
| 24                  | 539 11 28-99 | 12  | Nut 5/16-18 Hex Flange Nyloc                |  |
| 25                  | 819 13 16-16 | 5   | Washer 13/32 16 Gauge                       |  |
| <b>SERVICE KITS</b> |              |     |   |  |
|                     | 582 68 66-01 | 1   | Lever, Right Assembly                       | 2, 6, 12                                 |
|                     | 593 26 01-01 | 1   | Lever, Left Assembly                        | 1, 6, 12                                 |
|                     | 582 68 74-01 | 2   | Bellcrank, Control Assembly                 | 6, 7                                     |
|                     | 582 68 78-01 | 1   | Lever Controls, Left Assembly               | 1, 3, 5, 6, 8, 15, 16,<br>20, 21, 23, 24 |



| Ref.         | Part No.     | Qty | Description            | Kit / Assy Includes |
|--------------|--------------|-----|------------------------|---------------------|
| 1            | 501 86 62-02 | 1   | Panel, Control         |                     |
| 2            | 589 88 72-01 | 1   | Switch, Blade          |                     |
| 3            | 574 45 54-01 | 1   | Switch, Ignition       |                     |
| 4            | 589 81 95-01 | 1   | Battery                |                     |
| 5            | 582 68 58-02 | 1   | Tray, Storage Gry      |                     |
| 6            | 582 68 59-01 | 4   | Clip, Trim             |                     |
| 7            | 592 84 33-01 | 1   | Net, Cargo             |                     |
| 8            | 592 83 83-01 | 1   | Cable Negative         |                     |
| 9            | 592 83 83-01 | 1   | Cable Positive         |                     |
| 10           | 574 20 69-03 | 1   | Cable, Choke           |                     |
| 11           | 582 68 87-01 | 1   | Cable Throttle         |                     |
| 12           | 586 16 18-01 | 1   | Gauge, Service         |                     |
| 13           | 592 87 27-02 | 1   | Gauge, Fuel Level      |                     |
| 14           | 539 10 27-59 | 4   | Insulator, Battery     |                     |
| 15           | 539 13 26-24 | 1   | Knob, Shift            |                     |
| 16           | 539 10 31-78 | 1   | Cap, Switch Blk        |                     |
| 17           | 590 57 70-01 | 1   | Pad, Battery           |                     |
| 18           | 574 45 55-01 | 2   | Key, Ignition          |                     |
| 19           | 590 92 76-06 | 1   | Strap, Battery Gry     |                     |
| 20           | 539 10 44-11 | 1   | Knob w/ Stud           |                     |
| 21           | 532 19 98-55 | 2   | Screw 1/4-20 Panhead   |                     |
| 22           | 582 46 08-01 | 2   | Screw M6 x 8mm Hex Cap |                     |
| SERVICE KITS |              |     |                        |                     |
|              | 593 66 41-01 | 1   | Tray, Assembly         | 5, 6                |
|              | 593 66 42-01 | 1   | Ignition, Assembly     | 3, 16, 18           |
| NOT SHOWN    |              |     |                        |                     |
|              | 592 87 68-01 | 1   | Harness, Main          |                     |
|              | 589 83 85-01 | 1   | Harness, Adapter       |                     |
|              | 592 83 08-01 | 1   | Harness, Jumper 42"    |                     |

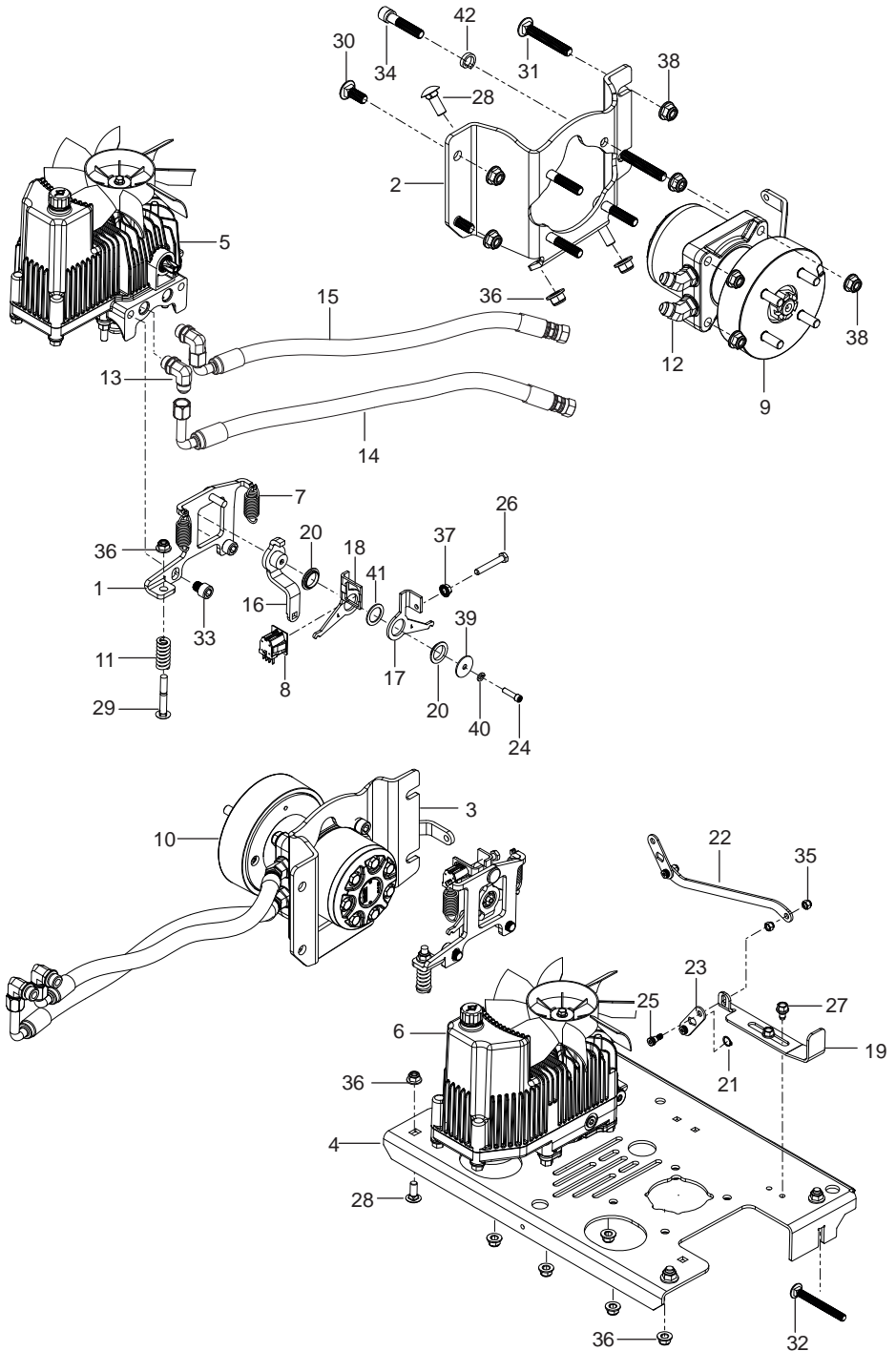


| Ref. | Part No.     | Qty | Description                              | Kit / Assy Includes  |
|------|--------------|-----|--|----------------------|
| 1    | 582 04 69-02 | 1   | Assy, Fuel Tank                          | 2, 3, 6, 7, 8, 9, 10 |
| 2    | 590 63 88-01 | 1   | Sensor, Fuel Level                       |                      |
| 3    | 576 61 81-01 | 1   | Valve, Roll Over                         |                      |
| 4    | 539 91 63-25 | 1   | Valve, Fuel                              |                      |
| 5    | 582 04 73-01 | 1   | Console                                  |                      |
| 6    | 590 20 91-01 | 1   | Grommet, Fuel Sensor                     |                      |
| 7    | 584 64 82-01 | 1   | Grommet, Valve                           |                      |
| 8    | 532 00 36-45 | 1   | Grommet, Fuel                            |                      |
| 9    | 582 68 81-01 | 1   | Assy, Fuel Tube                          |                      |
| 10   | 575 01 81-01 | 1   | Cap, Fuel                                |                      |
| 11   | 582 48 34-01 | 1   | Cover, Left                              |                      |
|      | 582 48 24-01 | 1   | Cover, Right                             |                      |
| 12   | 582 68 82-02 | 1   | Bracket, Mount Left                      |                      |
| 13   | 582 68 82-04 | 1   | Bracket, Mount Right                     |                      |
| 14   | 587 04 48-37 | 1   | Hose 1/4 x 37" Fuel                      |                      |
| 15   | 587 04 48-05 | 1   | Hose 1/4 x 5" Fuel                       |                      |
| 16   | 587 04 45-21 | 1   | Hose 3/16 x 21" Vapor                    |                      |
| 17   | 592 72 43-01 | 3   | Clamp, P Type                            |                      |
| 18   | 532 12 34-87 | 4   | Clamp, Hose                              |                      |
| 19   | 592 85 87-01 | 6   | Bolt 5/16-18 x 3/4 Hex Flange Head       |                      |
| 20   | 592 85 91-01 | 2   | Bolt 3/8-16 x 3-1/2 Round Hd Square Neck |                      |
| 21   | 521 99 65-01 | 2   | Nut 3/8-16 Hex Flange Nyloc              |                      |

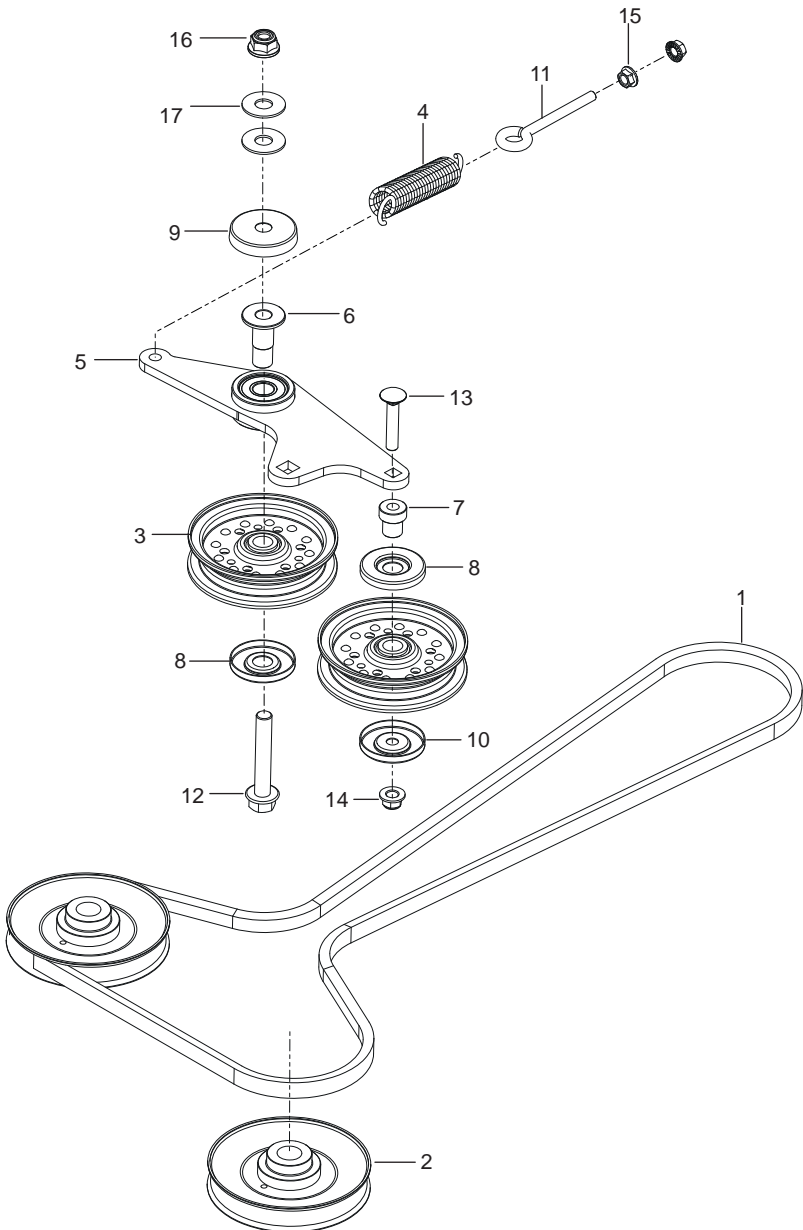




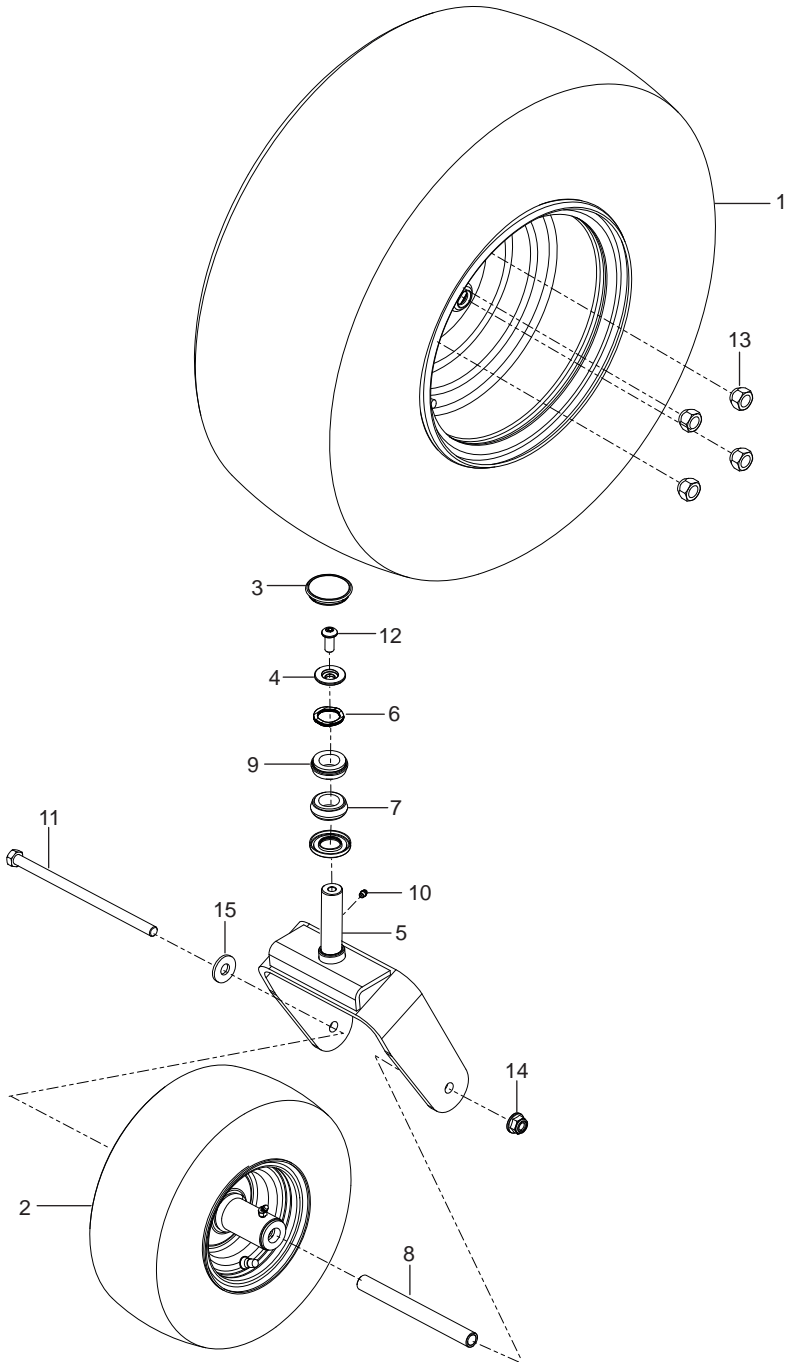
| Ref.                | Part No.     | Qty | Description                            | Kit / Assy Includes        |
|---------------------|--------------|-----|--|----------------------------|
| 1                   | 590 72 11-01 | 2   | Bracket, Pivot                         |                            |
| 2                   | 590 70 60-02 | 1   | Bracket                                |                            |
| 3                   | 539 13 21-61 | 4   | Bushing, Brake                         |                            |
| 4                   | 590 58 66-01 | 1   | Cable, Park Left                       |                            |
| 5                   | 590 58 67-01 | 1   | Cable, Park Right                      |                            |
| 6                   | 590 20 43-01 | 1   | Gear, Input                            |                            |
| 7                   | 590 20 45-01 | 1   | Gear, Output                           |                            |
| 8                   | 592 61 93-01 | 1   | Grip , Handle                          |                            |
| 9                   | 588 67 04-01 | 1   | Lever                                  |                            |
| 10                  | 590 87 82-01 | 2   | Spring, Compression                    |                            |
| 11                  | 532 10 95-53 | 1   | Switch, Interlock                      |                            |
| 12                  | 578 29 64-03 | 2   | Screw 5/16-18 x 1-1/4 Button Head      |                            |
| 13                  | 586 93 60-01 | 2   | Screw 10-24 x 1/2 Patch Button Head    |                            |
| 14                  | 590 86 26-01 | 2   | Screw Hex Socket Button Head           |                            |
| 15                  | 525 61 28-01 | 1   | Bolt 3/8-16 x 1 Hex Flange Hed         |                            |
| 16                  | 590 79 08-01 | 1   | Bolt 5/15-18 x 2-3/4 Hex Head Shoulder |                            |
| 17                  | 539 10 72-71 | 2   | Bolt 5/16-18 x 1 Round Hd Square Neck  |                            |
| 18                  | 539 11 03-03 | 2   | Bolt 5/16 Shoulder                     |                            |
| 19                  | 539 20 02-82 | 3   | Nut 3/8-16 Hex Jam Nyloc               |                            |
| 20                  | 539 11 28-99 | 6   | Nut 5/16-18 Hex Flange Nyloc           |                            |
| 21                  | 539 99 07-17 | 5   | Nut 5/16-18 Hex Nyloc                  |                            |
| 22                  | 539 11 18-97 | 2   | Washer 3/8 Special                     |                            |
| 23                  | 539 13 30-07 | 1   | Washer, Wave                           |                            |
| <b>SERVICE KITS</b> |              |     |  |                            |
|                     | 593 26 11-01 | 1   | Lever, Assembly                        | 8, 9, 12                   |
|                     | 593 26 12-01 | 1   | Brake, Assembly                        | 2, 3, 6, 7, 14, 19, 22, 23 |



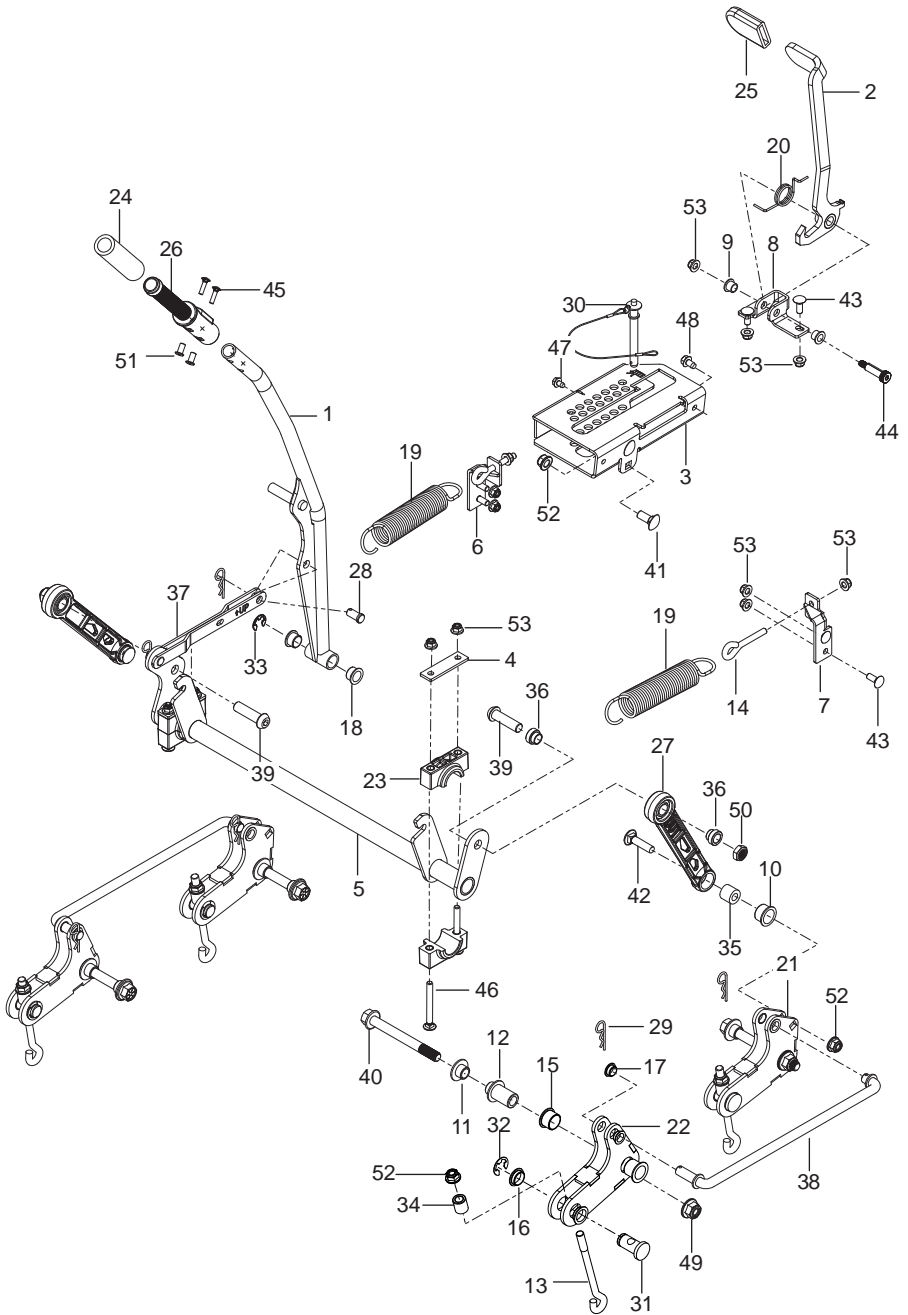
| Ref.                | Part No.     | Qty | Description                                | Kit / Assy Includes                       |
|---------------------|--------------|-----|--|---|
| 1                   | 590 62 60-02 | 1   | Bracket, Return Left                       |   |
|                     | 590 62 60-04 | 1   | Bracket, Return Right                      |   |
| 2                   | 582 63 59-03 | 1   | Bracket, Mounting Left Black               |   |
| 3                   | 582 63 59-04 | 1   | Bracket, Mounting Right Black              |   |
| 4                   | 582 64 11-02 | 1   | Plate, Mounting Blk                        |   |
| 5                   | 589 39 81-01 | 1   | Pump 12cc Left                             |   |
| 6                   | 589 39 81-02 | 1   | Pump 12cc Right                            |   |
| 7                   | 589 56 96-01 | 4   | Spring, Return                             |   |
| 8                   | 587 64 84-01 | 2   | Switch, nc/no                              |   |
| 9                   | 589 42 18-01 | 1   | Motor, Hydraulic 195cc Left                |   |
| 10                  | 589 42 18-02 | 1   | Motor, Hydraulic 195cc Right               |   |
| 11                  | 539 11 39-52 | 2   | Spring                                     |   |
| 12                  | 589 39 84-01 | 4   | Fitting 45° Elbow                          |   |
| 13                  | 589 39 85-01 | 4   | Fitting 90° Elbow                          |   |
| 14                  | 589 41 92-01 | 2   | Hose, Hydraulic Lower Blk                  |   |
| 15                  | 589 41 93-01 | 2   | Hose, Hydraulic Upper Blu                  |   |
| 16                  | 589 52 47-01 | 2   | Arm, Control                               |   |
| 17                  | 590 62 64-01 | 1   | Arm, Bracket Left                          |   |
|                     | 590 62 64-02 | 1   | Arm, Bracket Right                         |   |
| 18                  | 589 56 94-01 | 1   | Arm, Switch Left                           |   |
|                     | 589 56 94-02 | 1   | Arm, Switch Right                          |   |
| 19                  | 582 68 86-03 | 1   | Pull, Bypass                               |   |
| 20                  | 582 68 88-01 | 4   | Bushing, Flange                            |   |
| 21                  | 592 85 75-01 | 2   | Clip, C                                    |   |
| 22                  | 582 68 85-03 | 1   | Link, Pump Bypass                          |   |
| 23                  | 582 68 84-03 | 2   | Plate, Pivot                               |   |
| 24                  | 590 68 08-01 | 2   | Bolt 1/4-20 x 1 Socket Head                |   |
| 25                  | 592 85 83-01 | 3   | Bolt 1/4 x 5/16 Shoulder                   |   |
| 26                  | 539 10 83-95 | 2   | Bolt 5/16 x 2 Hex Head Tap                 |   |
| 27                  | 532 16 54-92 | 2   | Bolt 5/16-18 Shoulder                      |   |
| 28                  | 539 99 06-45 | 6   | Bolt 3/8-16 x 1 Round Head Square Neck     |   |
| 29                  | 872 11 06-20 | 2   | Bolt 3/8-16 x 2-1/2 Round Hd Square Neck   |   |
| 30                  | 582 69 25-01 | 4   | Bolt 1/2-13 x 1-1/2 Round Head Square Neck |   |
| 31                  | 582 69 25-02 | 4   | Bolt 1/2-13 x 3-1/2 Round Head Square Neck |   |
| 32                  | 589 39 86-01 | 2   | Bolt 3/8-16 x 3-1/2 Round Head Square Neck |   |
| 33                  | 582 68 18-01 | 4   | Screw 1/2-20 x 1/2 Socket Head Cap         |   |
| 34                  | 582 69 23-01 | 8   | Screw 1/2-13 x 2-1/2                       |   |
| 35                  | 539 97 69-78 | 3   | Nut 1/4-20 Hex Nyloc                       |   |
| 36                  | 521 99 65-01 | 8   | Nut 3/8-16 Hex Flange Nyloc                |   |
| 37                  | 539 99 05-85 | 2   | Nut 5/16-18 Hex Whizlock                   |   |
| 38                  | 521 99 11-01 | 8   | Nut 1/2-13 Hex Flange Nyloc                |   |
| 39                  | 590 68 60-01 | 2   | Washer 1-1/2                               |   |
| 40                  | 810 04 04-00 | 2   | Washer Lock                                |   |
| 41                  | 590 77 88-01 | 2   | Washer, Nylon                              |   |
| 42                  | 582 69 24-01 | 8   | Washer, Lock                               |   |
| <b>SERVICE KITS</b> |              |     |  |   |
|                     | 593 26 04-01 | 1   | Speed Control Assembly, Left               | 8, 16, 17, 18, 20, 24, 26, 37, 39, 40, 41 |
|                     | 593 26 04-02 | 1   | Speed Control Assembly, Right              | 8, 16, 17, 18, 20, 24, 26, 37, 39, 40, 41 |



| Ref. | Part No.     | Qty | Description                            | Kit / Assy Includes |
|------|--------------|-----|--|---------------------|
| 1    | 592 87 35-01 | 1   | Belt                                   |                     |
| 2    | 589 39 83-01 | 2   | Pulley, 5"                             |                     |
| 3    | 539 97 66-88 | 2   | Pulley, Idler                          |                     |
| 4    | 577 43 72-01 | 1   | Spring, Extension                      |                     |
| 5    | 574 89 11-04 | 1   | Arm, Idler w /Bearing                  |                     |
| 6    | 574 97 56-01 | 1   | Bushing, Pivot                         |                     |
| 7    | 525 43 56-01 | 1   | Pivot, Idler                           |                     |
| 8    | 510 26 22-01 | 2   | Shield, Dust                           |                     |
| 9    | 539 11 46-62 | 1   | Shield, Dust                           |                     |
| 10   | 510 25 45-01 | 1   | Shield, Dust                           |                     |
| 11   | 539 11 55-74 | 1   | Eyebolt 5/16 x 3-1/2                   |                     |
| 12   | 874 49 08-48 | 1   | Bolt 1/2-13 x 3 Hex Flange Head        |                     |
| 13   | 539 10 01-45 | 1   | Bolt 3/8-16 x 2 Round Head Square Neck |                     |
| 14   | 521 99 65-01 | 1   | Nut 3/8-16 Hex Flange Nyloc            |                     |
| 15   | 539 99 05-85 | 2   | Nut 5/16-18 Hex Whizlock               |                     |
| 16   | 521 99 11-01 | 1   | Nut 1/2-13 Hex Flange Nyloc            |                     |
| 17   | 539 99 05-50 | 2   | Washer 14 Gauge                        |                     |

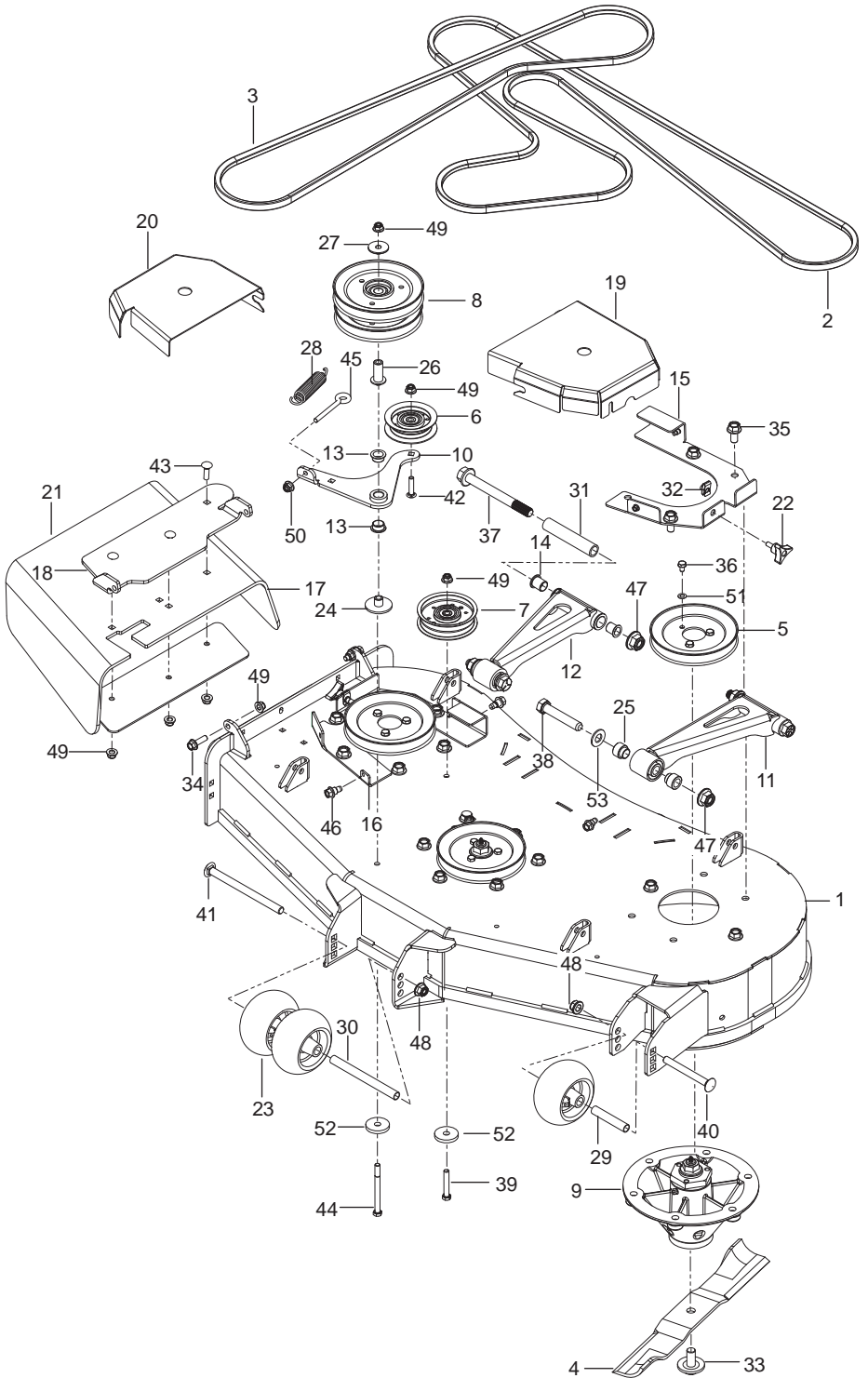


| Ref. | Part No.     | Qty | Description                          | Kit / Assy Includes |
|------|--------------|-----|--------------------------------------|---------------------|
| 1    | 590 70 48-01 | 2   | Wheel Asm 20 x 10-10 Rear            |                     |
| 2    | 581 19 95-01 | 2   | Wheel.13 x 6.50 Caster               |                     |
| 3    | 590 70 00-01 | 2   | Cap, Dust                            |                     |
| 4    | 591 42 51-01 | 2   | Spring, Cap                          |                     |
| 5    | 590 67 46-02 | 2   | Fork, Caster Org                     |                     |
| 6    | 590 68 16-01 | 2   | Spring, Nested Wave                  |                     |
| 7    | 539 10 28-51 | 2   | Seal                                 |                     |
| 8    | 575 33 49-01 | 2   | Spacer, Pivot                        |                     |
| 9    | 539 10 25-43 | 4   | Bearing                              |                     |
| 10   | 539 10 14-74 | 2   | Zerk                                 |                     |
| 11   | 539 10 55-17 | 2   | Bolt 1/2-13 x 9-1/2                  |                     |
| 12   | 591 45 73-01 | 2   | Screw 7/16-14 x 1 Socket Button Head |                     |
| 13   | 587 65 39-02 | 8   | Nut 1/2-20 Unf-2B Grade 8            |                     |
| 14   | 521 99 11-01 | 2   | Nut 1/2-13 Hex Flange Nyloc          |                     |
| 15   | 819 18 22-12 | 2   | Washer 9/16                          |                     |

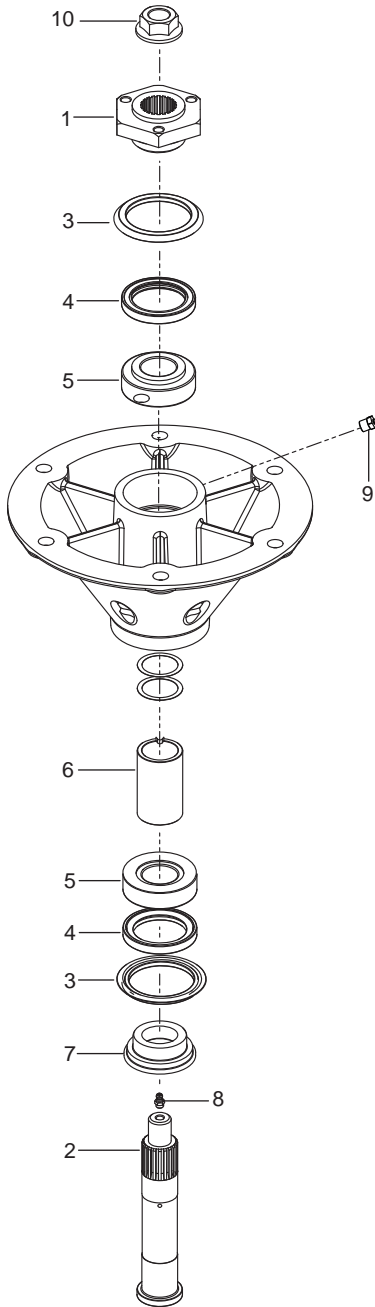




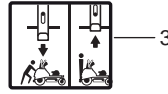
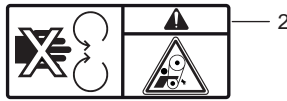
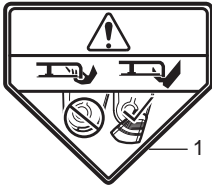
| Ref.                | Part No.     | Qty | Description                              | Kit / Assy Includes         |
|---------------------|--------------|-----|--|-----------------------------|
| 1                   | 590 89 78-02 | 1   | Latch, Transport                         |                             |
| 2                   | 590 85 05-02 | 1   | Lever, Deck Lift                         |                             |
| 3                   | 589 66 51-02 | 1   | Plate, Height Select                     |                             |
| 4                   | 593 63 41-02 | 2   | Plate, Pillow Block                      |                             |
| 5                   | 590 19 78-02 | 1   | Shaft, Deck Lift                         |                             |
| 6                   | 590 67 30-02 | 1   | Bracket, Spring Left                     |                             |
| 7                   | 590 67 29-02 | 1   | Bracket, Spring Right                    |                             |
| 8                   | 590 68 02-02 | 1   | Bracket, Transport                       |                             |
| 9                   | 591 04 21-01 | 2   | Bushing                                  |                             |
| 10                  | 590 86 65-01 | 2   | Bushing Nylon 1 x 3/4"                   |                             |
| 11                  | 589 41 41-01 | 8   | Bushing, Pivot Inside                    |                             |
| 12                  | 589 41 42-01 | 4   | Bushing, Pivot Outside                   |                             |
| 13                  | 576 47 90-01 | 4   | Eyebolt 1/2-13 x 6-3/4                   |                             |
| 14                  | 539 10 74-84 | 2   | Eyebolt 3/8-16 x 1-3/4                   |                             |
| 15                  | 501 60 37-02 | 8   | Bearing Flange 1"                        |                             |
| 16                  | 501 60 37-03 | 8   | Bearing Flange 7/8"                      |                             |
| 17                  | 501 60 37-04 | 6   | Bearing Flange 5/8"                      |                             |
| 18                  | 539 13 15-18 | 2   | Bearing, Flange                          |                             |
| 19                  | 590 00 32-01 | 2   | Spring, Extension                        |                             |
| 20                  | 590 85 61-01 | 1   | Spring, Torsion                          |                             |
| 21                  | 589 60 51-02 | 2   | Bellcrank Rear                           |                             |
| 22                  | 589 60 49-02 | 2   | Bellcrank Front                          |                             |
| 23                  | 510 02 39-02 | 4   | Block, Pillow                            |                             |
| 24                  | 592 72 39-01 | 1   | Grip, Lift Handle                        |                             |
| 25                  | 591 04 19-01 | 1   | Grip, Transport                          |                             |
| 26                  | 590 96 03-02 | 1   | Handle, Lift Lever                       |                             |
| 27                  | 592 72 78-01 | 2   | Link, Deck Lift                          |                             |
| 28                  | 590 86 64-01 | 2   | Pin 1/2 x 1 Clevis                       |                             |
| 29                  | 539 97 69-89 | 6   | Pin 2-1/2 Hair                           |                             |
| 30                  | 590 46 55-01 | 1   | Pin 3-1/2 Height Adjust                  |                             |
| 31                  | 589 41 43-01 | 4   | Pin, Trunnion                            |                             |
| 32                  | 590 67 33-01 | 5   | Ring E-Clip 7/8"                         |                             |
| 33                  | 590 00 29-01 | 1   | Ring E-Clip 3/4"                         |                             |
| 34                  | 576 48 58-01 | 4   | Spacer, Eyebolt                          |                             |
| 35                  | 590 00 35-02 | 2   | Spacer, Pivot                            |                             |
| 36                  | 510 36 25-01 | 4   | Spacer, Strut                            |                             |
| 37                  | 590 66 24-01 | 1   | Strap                                    |                             |
| 38                  | 589 41 44-01 | 2   | Rod, Deck Lift                           |                             |
| 39                  | 592 80 77-01 | 2   | Bolt 5 8-11 x 2-1/2 Button Hd Torx       |                             |
| 40                  | 590 67 87-01 | 4   | Bolt 5/8-11 x 6 Grade 8                  |                             |
| 41                  | 592 80 80-01 | 2   | Bolt 1/2-13 x 1-1/4 Round Hd Square Neck |                             |
| 42                  | 592 80 79-01 | 2   | Bolt 1/2-13 x 2 Round Hd Square Neck     |                             |
| 43                  | 539 99 06-45 | 6   | Bolt 3/8-16 x 1 Round Hd Square Neck     |                             |
| 44                  | 592 80 76-01 | 1   | Bolt 3/8-16 x 2 Shoulder Socket Hd       |                             |
| 45                  | 592 80 78-01 | 2   | Bolt 1/4-20 x 3/4 Round Hd Sq Short Neck |                             |
| 46                  | 592 85 91-01 | 4   | Bolt 3/8-16 x 3-1/2 Round Hd Square Neck |                             |
| 47                  | 539 99 08-58 | 1   | Screw 5/16-18 x 1/2 Thread Roll          |                             |
| 48                  | 817 49 06-10 | 1   | Screw 3/8-16 x 5/8 Hex Washer Hd         |                             |
| 49                  | 525 82 91-01 | 4   | Nut 5/8-11 Hex Flange Nyloc              |                             |
| 50                  | 589 67 77-01 | 2   | Nut 5/8-11 Hex Hd Thin Nyloc             |                             |
| 51                  | 592 80 82-01 | 2   | Nut, Hexagon Socket Cap                  |                             |
| 52                  | 521 99 11-01 | 8   | Nut 1/2-13 Hex Flange Nyloc              |                             |
| 53                  | 521 99 65-01 | 15  | Nut 3/8-16 Hex Flange Nyloc              |                             |
| <b>SERVICE KITS</b> |              |     |  |                             |
|                     | 593 64 37-01 | 1   | Handle, Lift Assembly                    | 24, 26                      |
|                     | 593 64 38-01 | 1   | Latch, Transport Assembly                | 2, 8, 9, 20, 25, 43, 44, 48 |
|                     | 593 64 39-01 | 1   | Deck Lift, Linkage Assembly              | 10, 27                      |
|                     | 593 65 07-01 | 1   | Bellcrank Front, Assembly                | 15, 16, 17, 22              |
|                     | 593 65 07-02 | 1   | Bellcrank Rear, Assembly                 | 15, 16, 17, 21              |



| Ref.                | Part No.     | Qty | Description                              | Kit / Assy Includes |
|---------------------|--------------|-----|--|---------------------|
| 1                   | 593 12 56-03 | 1   | Deck 48" w/ Safety Decals                |                     |
| 2                   | 590 19 28-01 | 1   | Belt, Deck 48"                           |                     |
| 3                   | 592 87 35-01 | 1   | Belt, Deck Drive                         |                     |
| 4                   | 589 35 34-02 | 3   | Blade 16-1/2"                            |                     |
| 5                   | 539 13 06-46 | 3   | Pulley                                   |                     |
| 6                   | 590 54 24-01 | 1   | Pulley Idler Flat 3"                     |                     |
| 7                   | 590 54 25-01 | 1   | Pulley Idler Flat 4"                     |                     |
| 8                   | 589 59 57-01 | 1   | Pulley, Stacked                          |                     |
| 9                   | 580 94 33-06 | 3   | Spindle, Cast Iron                       |                     |
| 10                  | 589 80 85-02 | 1   | Arm, Tensioner                           |                     |
| 11                  | 590 18 58-02 | 1   | Arm, Drawbar Left                        |                     |
| 12                  | 590 38 96-02 | 1   | Arm, Drawbar Right                       |                     |
| 13                  | 501 60 37-06 | 2   | Bearing 3/8 Flange                       |                     |
| 14                  | 501 60 37-05 | 4   | Bearing 1-1/2 Flange                     |                     |
| 15                  | 590 02 82-02 | 1   | Bracket, Cover Left                      |                     |
| 16                  | 590 02 80-02 | 1   | Bracket, Cover Right                     |                     |
| 17                  | 589 41 81-03 | 1   | Bracket, Deflector Lower                 |                     |
| 18                  | 589 41 82-03 | 1   | Bracket Pnt Deflector Upper              |                     |
| 19                  | 590 02 81-02 | 1   | Cover, Pulley Left                       |                     |
| 20                  | 590 02 83-02 | 1   | Cover, Pulley Right                      |                     |
| 21                  | 592 79 74-01 | 1   | Deflector, Deck                          |                     |
| 22                  | 539 10 44-11 | 2   | Knob W/ Stud                             |                     |
| 23                  | 574 16 96-01 | 3   | Roller, Gauge                            |                     |
| 24                  | 590 18 53-01 | 1   | Spacer, Arm                              |                     |
| 25                  | 590 32 52-01 | 4   | Spacer, Bearing                          |                     |
| 26                  | 590 18 54-01 | 1   | Spacer, Pulley                           |                     |
| 27                  | 590 18 55-01 | 1   | Spacer, Pulley                           |                     |
| 28                  | 539 10 68-50 | 1   | Spring                                   |                     |
| 29                  | 574 19 64-01 | 1   | Tube, Roller Axle                        |                     |
| 30                  | 574 19 65-01 | 1   | Tube, Roller Axle Long                   |                     |
| 31                  | 590 32 53-01 | 2   | Tube, Spacer                             |                     |
| 32                  | 539 10 47-63 | 2   | Retainer-U Type 5/16-18 Nut              |                     |
| 33                  | 539 11 90-07 | 3   | Bolt/Washer, Blade                       |                     |
| 34                  | 525 83 42-01 | 2   | Bolt 3/8-16 x 1-1/2 Hex Flange Head      |                     |
| 35                  | 574 21 06-01 | 18  | Bolt 1/2-13 x 1 Hex Flange Head          |                     |
| 36                  | 539 13 03-15 | 9   | Bolt 5/16-18 x 1/2 Hex Head              |                     |
| 37                  | 590 67 87-01 | 2   | Bolt 5/8-11 x 6 Hex Head Grade 8         |                     |
| 38                  | 580 75 46-01 | 2   | Bolt 5/8-11 x 3-1/2 Hex Head             |                     |
| 39                  | 874 78 06-36 | 1   | Bolt 3/8-16 x 2-1/4 Hex Head             |                     |
| 40                  | 510 02 23-01 | 1   | Bolt 1/2-13 x 4-3/4 Round Hd Square Neck |                     |
| 41                  | 872 14 08-64 | 1   | Bolt 1/2-13 x 8 Round Head Square Neck   |                     |
| 42                  | 539 99 09-23 | 1   | Bolt 3/8-16 x 1-3/4 Round Hd Square Neck |                     |
| 43                  | 872 14 06-10 | 3   | Bolt 3/8-16 x 1-1/4 Round Hd Square Neck |                     |
| 44                  | 590 67 86-01 | 1   | Bolt 3/8-16 x 4-1/4                      |                     |
| 45                  | 539 11 55-74 | 1   | Bolt Eye 5/16 x 3-1/2                    |                     |
| 46                  | 532 19 65-39 | 4   | Bolt Shoulder                            |                     |
| 47                  | 525 82 91-01 | 4   | Nut 5/8-11 Hex Flange Nyloc              |                     |
| 48                  | 521 99 11-01 | 2   | Nut 1/2-13 Hex Flange Nyloc              |                     |
| 49                  | 521 99 65-01 | 8   | Nut 3/8-16 Hex Flange Nyloc              |                     |
| 50                  | 539 11 28-99 | 1   | Nut 5/16-18 Hex Flange Nyloc             |                     |
| 51                  | 539 10 96-00 | 9   | Washer 5/16 Disc Spring                  |                     |
| 52                  | 539 10 65-04 | 2   | Washer 1-3/4 Harden                      |                     |
| 53                  | 819 21 21-13 | 2   | Washer 13 Gauge                          |                     |
| <b>SERVICE KITS</b> |              |     |  |                     |
|                     | 593 65 09-01 | 1   | Arm, Tensioner Assembly                  | 10, 13              |
|                     | 593 65 12-01 | 1   | Arm, Right Drawbar Assembly              | 12, 14              |
|                     | 593 65 11-01 | 1   | Arm, Left Drawbar Assembly               | 11, 14              |



| Ref.      | Part No.     | Qty | Description  | Kit / Assy Includes |
|-----------|--------------|-----|--|---------------------|
| 1         | 580 94 22-01 | 3   | Hub  |                     |
| 2         | 580 94 21-01 | 3   | Shaft, Spindle   |                     |
| 3         | 580 94 27-01 | 3   | Seal, V Ring   |                     |
| 4         | 580 94 26-01 | 6   | Seal, Shaft  |                     |
| 5         | 580 94 18-01 | 6   | Bearing  |                     |
| 6         | 580 94 23-01 | 3   | Spacer   |                     |
| 7         | 580 94 25-01 | 3   | Carrier, Seal  |                     |
| 8         | 539 97 69-98 | 3   | Zerk   |                     |
| 9         | 539 97 73-26 | 3   | Valve, Grease Poppet   |                     |
| 10        | 539 13 06-53 | 3   | Nut 3/4-16 Hex Flange  |                     |
| NOT SHOWN |              |     |  |                     |
|           | 574 75 42-01 | 1   | Kit, Bearing Assembly<br>When replacing the Spindle bearings, order<br>the Bearing Assembly Kit to assure proper<br>installation |                     |



|           |     |                  |       |
|-----------|-----|------------------|-------|
|           |     | Charging Charge  | 20 A  |
|           |     | Acc. Accessories | 10 A  |
| Indicator | 5 A | PTD PFC          | 7,5 A |
|           |     | Main. Protection | 20 A  |

**SERVICE CHART**

|       | 1 | 2 | 3 | 4 | 5 |
|-------|---|---|---|---|---|
| 50 h  |   |   |   |   |   |
| 250 h |   |   |   |   |   |
| 1/365 |   |   |   |   |   |
| 1/12  |   |   |   |   |   |
| 12/12 |   |   |   |   |   |

1/365: EVERY DAY | 1/12: EVERY MONTH | 12/12: EVERY YEAR

LUBRICATE    CHANGE FILTER  
 CHANGE OIL    INSPECT

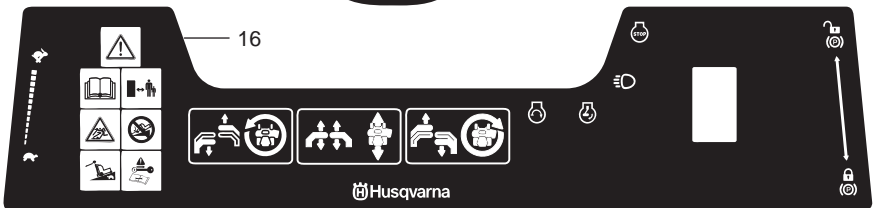
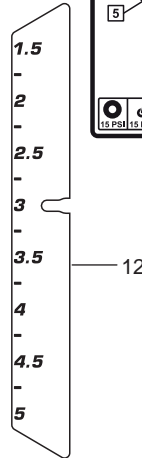
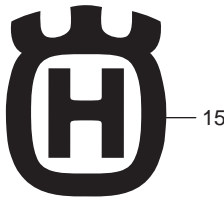
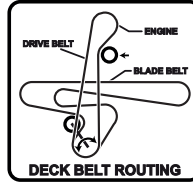
1.5 PSI | 10 PSI    REFER TO OPERATOR MANUAL FOR COMPLETE SERVICE SCHEDULE

**TO START**

- CONTROL LEVERS REMAIN IN NEUTRAL (CENTER POSITION)
- CHECK THAT PTO SWITCH IS DISENGAGED (DOWN POSITION)
- ASSURE PARKING BRAKE IS ENGAGED (REARWARD POSITION)
- SET THROTTLE TO THE MIDDLE POSITION UTILIZE THE CHOKE FOR COLD STARTS (SEE MANUAL)
- TURN KEY AND RELEASE WHEN ENGINE STARTS
- ALLOW THE ENGINE TO RUN AT A T
- MODERATE SPEED FOR A SHORT TIME BEFORE USE. RETURN SPRING FOR TRANSPORT MODE

**ONCE ENGINE IS RUNNING**

- MOVE THROTTLE TO MAXIMUM BRM
- PUSH LEFT HAND CONTROL LEVER DOWNWARD
- PUSH BRAKE LEVER FORWARD TO RELEASE
- ENGAGE PTO SWITCH
- MOVE AND STEER USING CONTROL LEVERS



| Ref. | Part No.     | Qty | Description              | Kit / Assy Includes |
|------|--------------|-----|--------------------------|---------------------|
| 1    | 584 90 46-01 | 1   | Decal, Blade Warning     |                     |
| 2    | 539 10 57-44 | 1   | Decal, Belt Danger       |                     |
| 3    | 590 79 95-01 | 1   | Decal, Bypass Release    |                     |
| 4    | 539 10 57-45 | 1   | Decal, Battery Warning   |                     |
| 5    | 581 72 44-01 | 1   | Decal, Deflector Warning |                     |
| 6    | 591 18 22-01 | 1   | Decal, Fuse              |                     |
| 7    | 591 18 21-01 | 1   | Decal, Service           |                     |
| 8    | 593 36 76-01 | 1   | Decal, Starting          |                     |
| 9    | 590 64 46-01 | 1   | Decal, Belt Routing      |                     |
| 10   | 581 72 43-01 | 2   | Decal, No Step           |                     |
| 11   | 590 79 98-01 | 1   | Decal, Logo              |                     |
| 12   | 590 79 94-01 | 1   | Decal, Deck Height       |                     |
| 13   | 590 80 54-01 | 1   | Decal, V 548             |                     |
| 14   | 539 10 18-81 | 1   | Decal, Exhaust Warning   |                     |
| 15   | 532 42 86-77 | 1   | Decal, Crown H           |                     |
| 16   | 590 79 96-01 | 1   | Decal, Console           |                     |



[www.husqvarna.com](http://www.husqvarna.com)

2018-05-15