

REPAIR PARTS MANUAL
MODEL NO. 989800
Lawn Tractor

CRAFTSMAN[®]

HOW TO USE THIS MANUAL

This manual is designed to provide the customer with a means to identify the parts on his/her tractor when ordering repair parts. The illustrations may or may not represent the actual assemblies; therefore, it is not recommended to use this manual as a guide to assemble or disassemble the tractor. Some hardware and parts are drawn larger in order to more readily identify them.

Each tractor has its own model number.

The model number for your tractor can be found on the fender under the seat.

When ordering parts, always give the following information:

- Product - Lawn Tractor
- MODEL NUMBER - **989800**
- Part Number
- Part Description

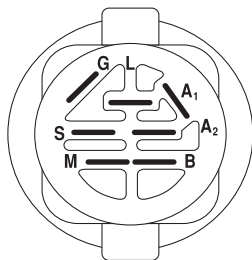
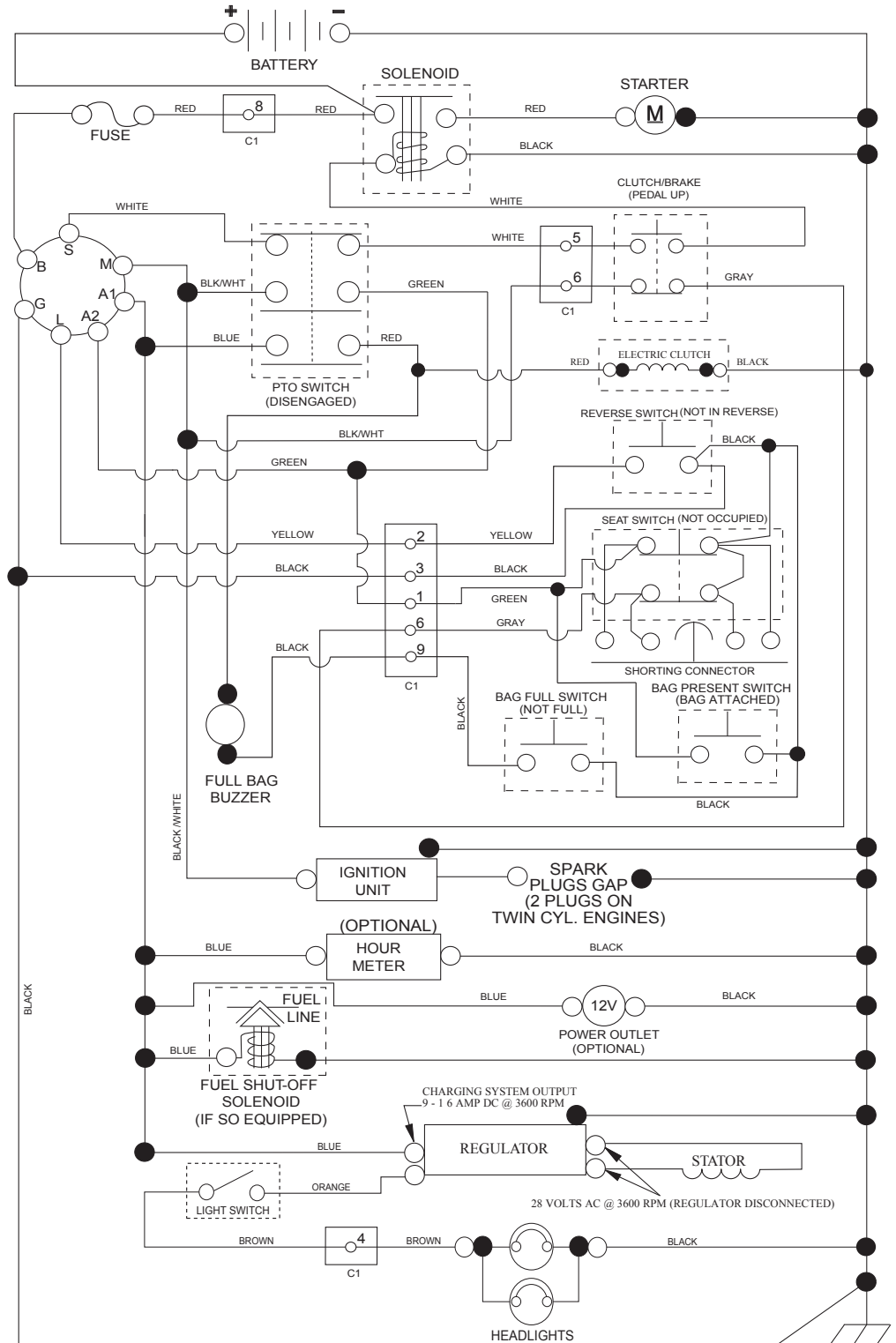
TABLE OF CONTENTS

SCHEMATIC	3
ELECTRICAL.....	4-5
CHASSIS	6-7
DRIVE.....	8-9
ENGINE.....	10-11
STEERING	12-13
MOWER DECK.....	14-15
MOWER LIFT.....	16
SEAT	17
BAGGER.....	18-19
DECALS.....	20
TRANSAXLE BREAKDOWN	22-23
ENGINE BREAKDOWN.....	24-28
WARRANTY.....	BACK COVER

TRACTOR - - MODEL NUMBER 917.989800

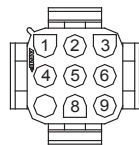
SCHEMATIC

SCH19

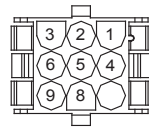


IGNITION SWITCH

POSITION	CIRCUIT	"MAKE"
OFF	M+G+A1	
RUN/OVERRIDE	B+A1	
RUN	B+A1	L+A2
START	B + S + A1	



CHASSIS HARNESS CONNECTOR (C1) (MATING SIDE)



DASH HARNESS CONNECTOR (C1) (MATING SIDE)

WIRING INSULATED CLIPS
NOTE: IF WIRING INSULATED CLIPS WERE REMOVED FOR SERVICING OF UNIT, THEY SHOULD BE RE-INSTALLED TO PROPERLY SECURE YOUR WIRING.

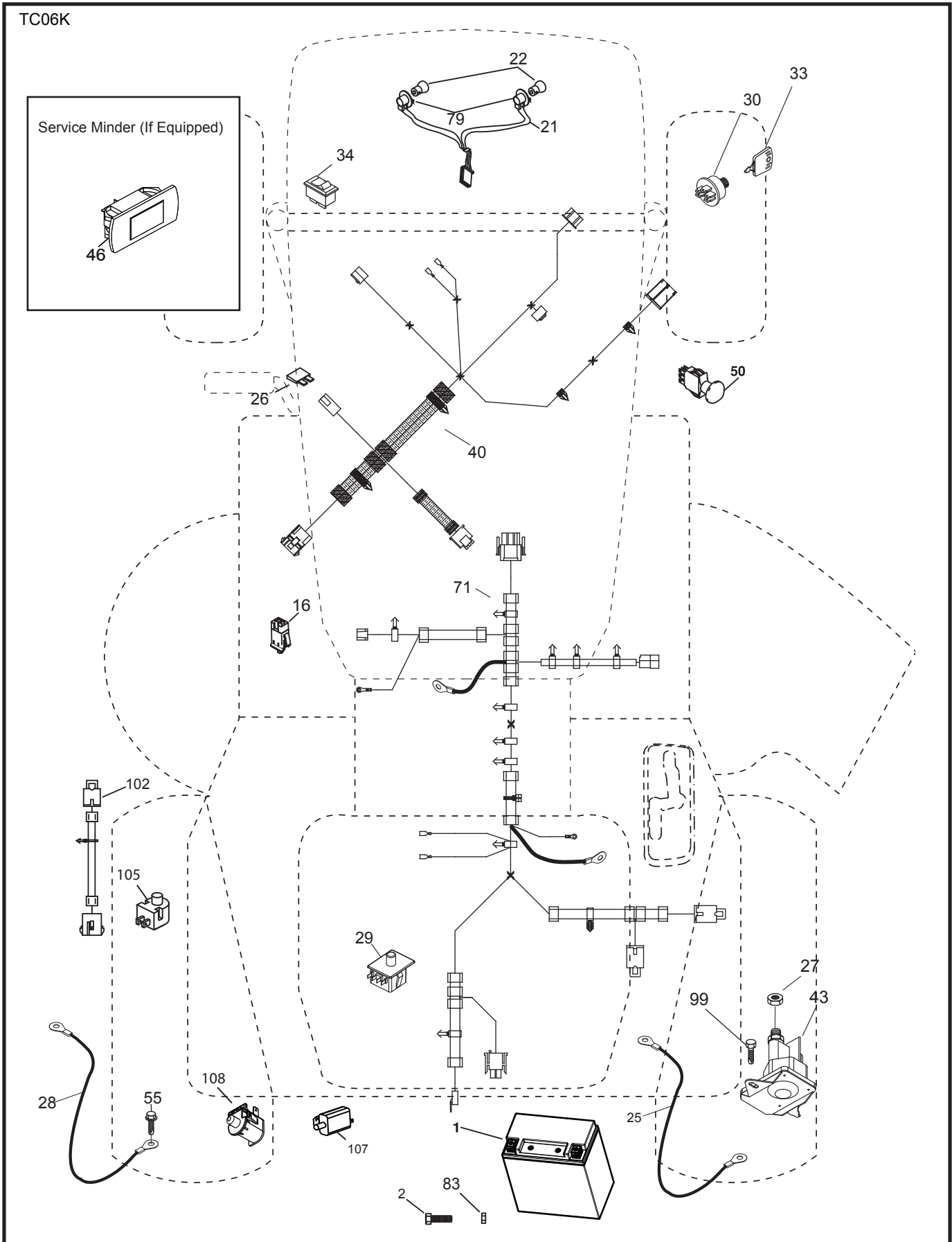
NON-REMOVABLE CONNECTIONS

REMOVABLE CONNECTIONS

TRACTOR - - MODEL NUMBER 917.989800

ELECTRICAL

TC06K



TRACTOR - - MODEL NUMBER 917.989800

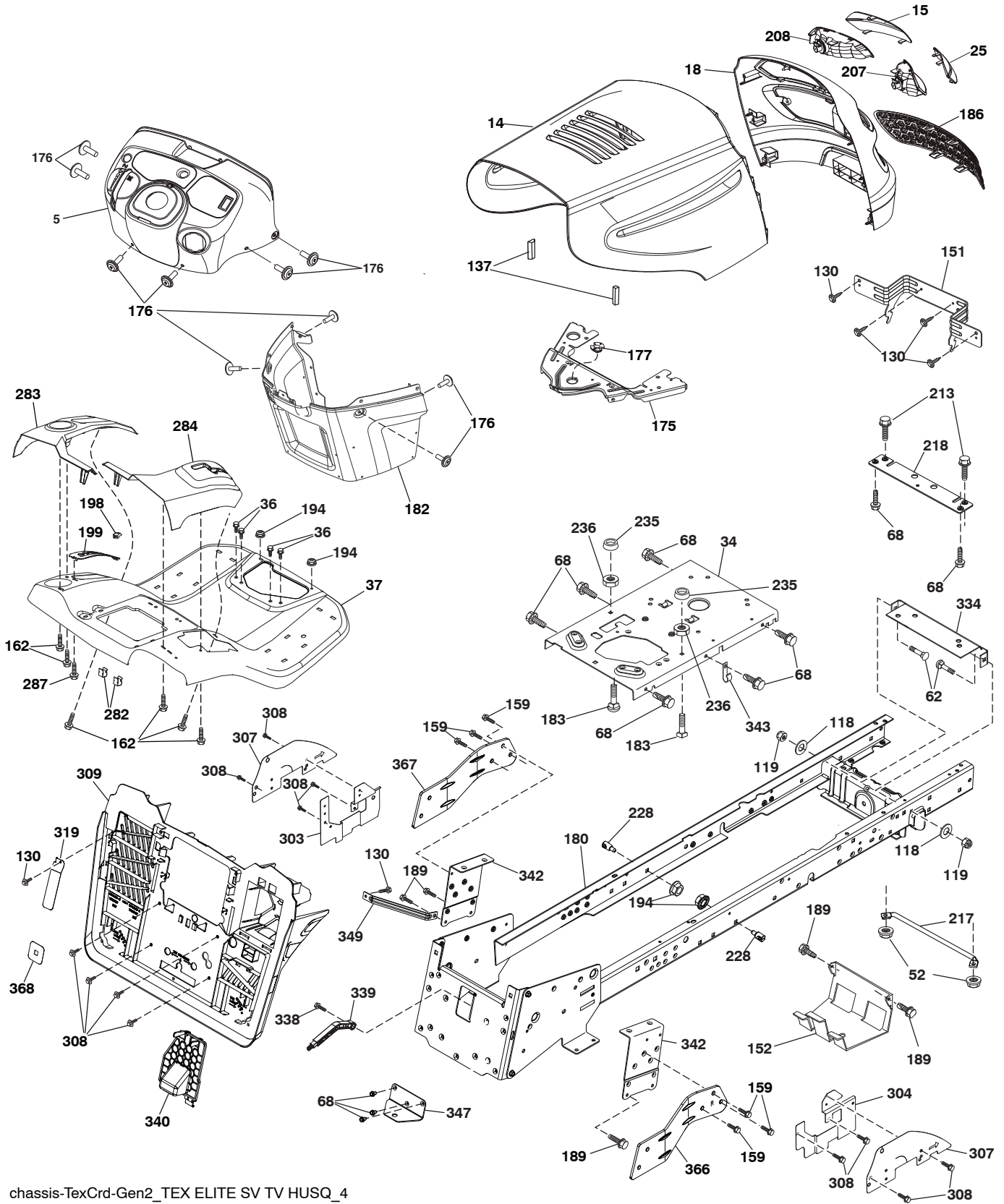
ELECTRICAL

KEY NO.	PART NO.	DESCRIPTION
1	437157	Battery
2	440923	Screw Hex Hd Cap M6 x 1.12mm
16	176138	Switch Interlock
21	183759	Harness Asm Light w/4152J
22	4152J	Bulb Light #1156
25	441382	Cable Battery 8 AWG 20"-Red
26	175158	Fuse
27	73510400	Nut Keps Hex 1/4-20 unc
28	441383	Cable Ground 8 AWG 20"-Black
29	192749	Switch Seat
30	193350	Switch Ignition
33	411934	Key/Chain
34	110712	Switch Light
40	587268901	Harness Ignition Dash/Lift
43	192507	Solenoid
50	174651	Switch PTO
55	17060512	Screw 5/16-18 x 3/4
71	440820	Harness Chassis/Lift Ign.
79	175242	Socket Asm.
83	436774	Nut Square M6 x 1 x 8.5 x 11mm
99	17000512	Screw 5/16-18 x 3/4
102	441262	Harness Jumper
105	407568	Switch Reverse
107	180379	Switch Full Bagger Indicator
108	421062	Switch Snapmount

NOTE: All component dimensions given in U.S. inches
1 inch = 25.4 mm

TRACTOR -- MODEL NUMBER 917.989800

CHASSIS ASSEMBLY



chassis-TeXCrd-Gen2_TEX ELITE SV TV HUSQ_4

TRACTOR - - MODEL NUMBER 917.989800

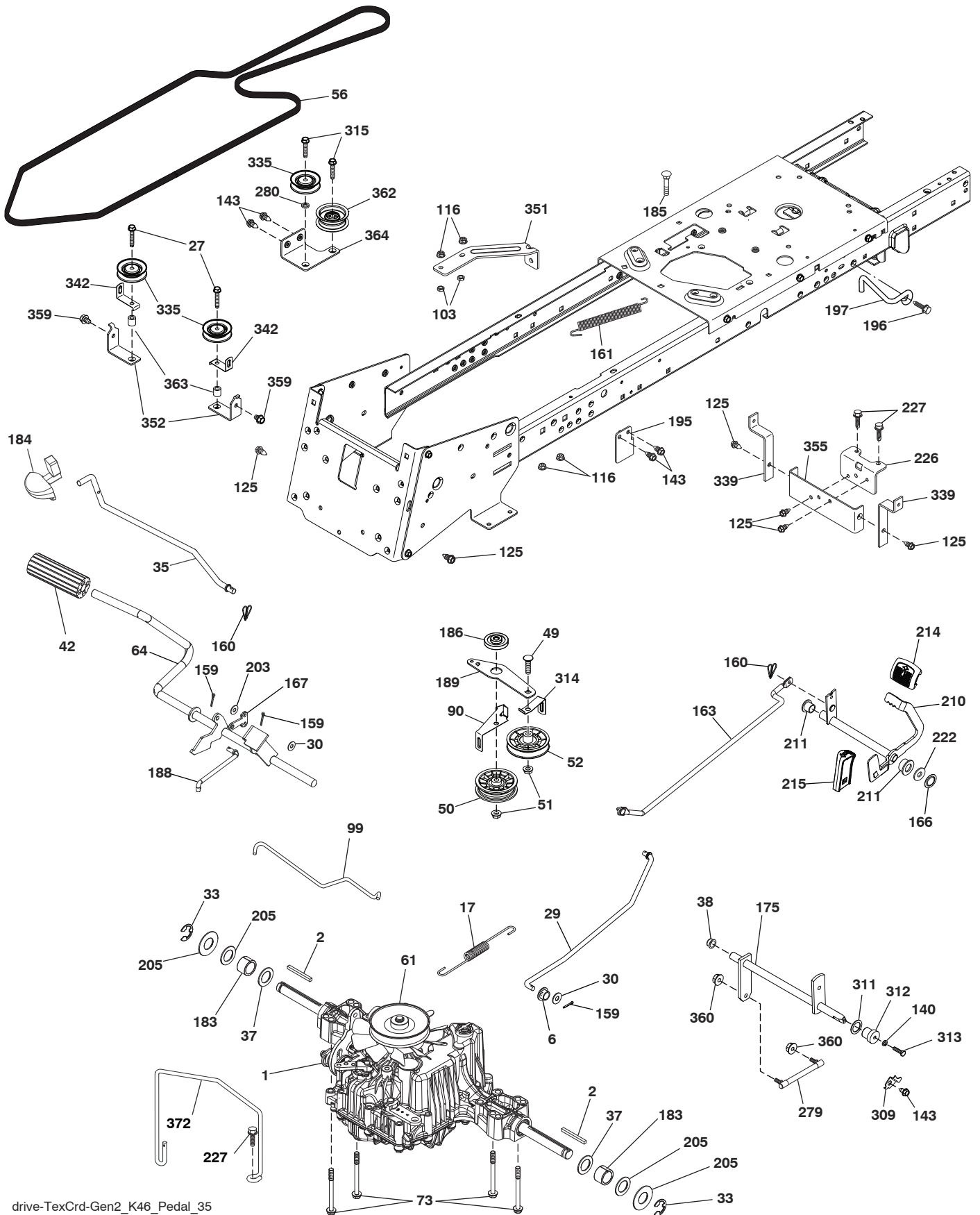
CHASSIS ASSEMBLY

KEY NO.	PART NO.	DESCRIPTION	KEY NO.	PART NO.	DESCRIPTION
5	197785X428	Dash	213	74760512	Bolt 5/16-18 x 3/4
14	585738305	Hood	217	409167	Rod Pivot Hood
15	183834X599	Lens Grille LH	218	196395	X-Piece Hood Stop
18	188455X615	Grille	228	195161	Stud Fastener
25	183835X599	Lens Grille RH	235	406129	Spacer Fender
34	580910901	Plate Engine	236	73930500	Nut Lock 5/16-18 unc
36	17060512	Screw 5/16-18 x 3/4	282	414110	Clip Retainer
37	436953X615	Fender	283	444201X428	Console Deck Lift
52	73680500	Nut Crown Lock 5/16	284	444084X428	Console Shift RH
62	72110608	Bolt 3/8-16 x 1 Gr. 5	287	17600406	Screw Hex Washhead 1/4-20 x 3/8
68	17490508	Screw Thdrol. 5/16-18 x 1/2	303	587493101	Shield Lower LH
118	19131316	Washer 13/32 x 13/16 x 16 Ga.	304	587492701	Shield Lower RH
119	73680600	Nut 3/8-16 unc	307	587494501	Shield Upper
130	416358	Screw #10 x 0.750 BOS Thread	308	171877	Bolt 5/16-18 unc x 3/4
137	184921	Bumper Hood	309	581328911	Backplate Bagger
151	407807	Bracket Pivot Hood	319	581313906	Lever Bagger
152	199535	Shield Browning	334	442537	Engine Plate
159	17000612	Screw Hexwsh Thdr 3/8-16 x 3/4	338	436640	Bolt Shoulder
162	142432	Screw Hex Wsh. Hi-Lo 1/4 x 1/2 unc	339	436641	Lever Bagger Full
175	193243	Crossmember	340	581329001	Door Battery
176	400776	Screw 10-24 x 5/8	342	435938	Support Fender
177	195228	Bushing Steering	343	440749	Clip
180	583902701	Chassis	347	442887	Hitch
182	193057	Dash Lower	349	436606	Bracket, Support
183	74520520	Bolt 5/16-18 x 1-1/4	366	581314602	Bracket RH Front Bagger
186	183829X428	Insert Grille	367	581314502	Bracket LH Front Bagger
189	17000512	Screw 5/16-18 x 3/4	368	581424801	Full Lever Bagger
194	73900500	Nut Lock Hex Flange 5/16-18			
198	197300X667	Indicator Deck Lift			
199	418739	Plate Deck Lift			
207	183833	Bezel Grille RH			
208	183832	Bezel Grille LH			

NOTE: All component dimensions given in U.S. inches
1 inch = 25.4 mm

TRACTOR - - MODEL NUMBER 917.989800

GROUND DRIVE



drive-TexCrd-Gen2_K46_Pedal_35

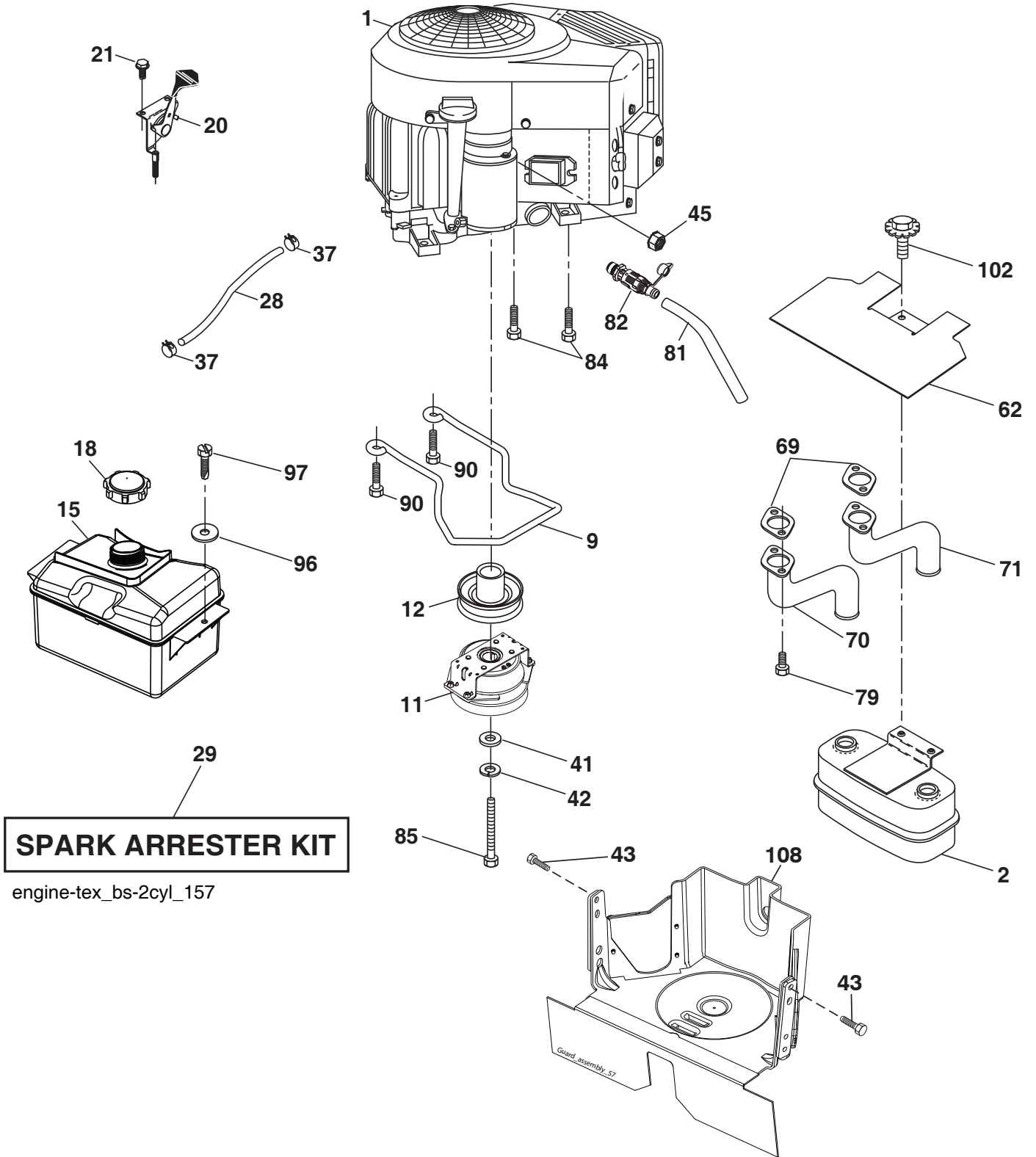
TRACTOR - - MODEL NUMBER 917.989800

GROUND DRIVE

KEY NO.	PART NO.	DESCRIPTION	KEY NO.	PART NO.	DESCRIPTION
1	-----	Transaxle, Tufftorq K46DF (446488) (Order parts from trans-axle manufacturer.)	189	433611	Bellcrank Ground Drive
2	123583	Key Square	195	580456901	Bracket Rod Brake CRD Tex
6	124028	Bushing Snap	196	17000616	Screw 3/8-16 x 1 Smgml Tap/R Blk
17	436227	Spring Brake K46	197	585658601	Link Clutch Anti-Rotation
27	17490528	Screw Hexwsh Thd 5/16-18 x 1-3/4	203	19111116	Washer 11/32 x 11/16 x 16 Ga.
29	442795	Rod, Brake	205	121748X	Washer 25/32 x 1-5/8 x 16 Ga.
30	19131616	Washer	210	400980	Rocker Asm. Pedal Control
33	12000001	Ring E	211	120183X	Bearing Nylon
35	197722	Rod, Brake, Park	214	421263	Pedal Forward
37	188967	Washer Harden .793 x 1.063 x 060	215	419482	Pedal Reverse
38	169613	Nyliner Bushing	222	79212010	Washer 21/32 x 1-1/4 10 Ga.
42	8883R	Cover, Foot Pedal	226	401564	Bracket Strap Torque
49	72110614	Bolt Rdhd 3/8-16 unc x 3/4 Gr. 5	227	17490512	Screw
50	194327	Idler Flat	279	444283	Link Shift
51	73900600	Lock Nut 3/8-16	280	19111012	Washer 11/32 x 5/8 x 12 Ga.
52	194326	Idler V-Groove	309	165581	Plate Fstnr Cross Shf
56	442781	V-Belt, Drive	311	169845	Washer Nylon
61	445151	Pulley Transaxle K46	312	165614	Hub Tapered
64	197865	Shaft Asm. Pedal Brake Control	313	74780416	Bolt Hex Fin 1/4-20 unc x 1 Gd5
73	74490544	Bolt Flanged	314	444713	Keeper Belt
90	443605	Keeper Belt Clutching	315	17580520	Screw Thdrol 5/16-18 x 4.25
99	443947	Rod Spring Bypass	335	199534	Pulley V-Idler
103	73350500	Nut Hex Jam 5/16-18	339	436867	Strap Torque K46 CRD Tex
116	73900500	Nut Lock Hex Flange 5/16-18	342	182682	Keeper Belt 2.5" STL V-Idlr CRD
125	17000512	Screw 5/16-18 x 3/4	351	436998	Bracket 97 CRD Deck Sway
140	10040400	Washer Lock Hvy Helical 1/4	352	435645	Bracket Idler CRD Tex
143	17490508	Screw 5/16-18 x 1/2	355	435669	Strap Torque
159	76020412	Pin Cotter 1/8 x 3/4	359	17490610	Screw Thdrol 3/8-16 x 5/8
160	169484	Retainer Clip	360	444714	Nut 5/16-24 UNF
161	105709X	Spring, Return, Clutch	362	436812	Idler Flat
163	442793	Rod Control	363	442780	Spacer 343 x 63 x .62
166	429164	Nut Push	364	443032	Bracket Idler CRD Tex
167	405257	Latch Brake Parking	372	587062701	Keeper Belt Transaxle
175	429359	Shaft Asm Crossshift Rear Crd			
183	137057	Spacer Axle			
184	198403X428	Handle Parking Brake			
185	72110622	Bolt 3/8-16 unc x 2-3/4 G5			
186	194321	Spacer Retainer			
188	582217001	Link Clutch, Long			

NOTE: All component dimensions given in U.S. inches
1 inch = 25.4 mm

ENGINE



TRACTOR - - MODEL NUMBER 917.989800

ENGINE

KEY NO.	PART NO.	DESCRIPTION
1	- - - -	Engine B&S Model No. 40R677-0014-B1 (579827501) (See engine breakdown.)
2	445962	Muffler
9	501832601	Keeper Belt Engine
11	587241601	Clutch Ogura
12	405097	Pulley Engine
15	581289901	Tank Fuel
18	430220	Cap Fuel
20	421473X428	Control Throttle/Choke
21	416358	Screw #10 x 0.750
28	137040	Line Fuel
29	137180	Kit Spark Arrester (Flat Scrn)
37	123487X	Clamp Hose Blk
41	126197X	Washer 1-1/2 x 15/32 x .250
42	10040700	Washer Lock 7/16
43	17060516	Screw 5/16-18 x 3/4
45	73510400	Nut Keps Hex 1/4-20 unc
62	434017	Shield Heat Muffler
69	165391	Gasket Muffler
70	581881101	Exhaust Tube LH
71	581881001	Exhaust Tube RH
79	183906	Screw Socket Head 5/16-18 x 1
81	148456	Tube Drain Oil Easy
82	428287	Valve Oil Drain
84	17060620	Screw 3/8-16 x 1-1/4
85	179953	Bolt Hex 7/16-20 x 3.75 Gr. 5
90	17000616	Screw 3/8-16 x 1
96	19091416	Washer 9/32 x 7/8 x 16 Ga.
97	17670412	Screw Hexwsh Thdrol 1/4-20 x 3/4
102	17000512	Screw 5/16-18 x 3/4
108	587179502	Cover Pulley Engine w/SHLD

NOTE: All component dimensions given in U.S. inches
1 inch = 25.4 mm

Engine Power Rating Information

The gross power rating for individual gas engine models is labeled in accordance with SAE (Society of Automotive Engineers) code J1940 (Small Engine Power & Torque Rating Procedure), and rating performance has been obtained and corrected in accordance with SAE J1995 (Revision 2002-05). Torque values are derived at 3060 RPM; horsepower values are derived at 3600 RPM. Actual gross engine power will be lower and is affected by, among other things, ambient operating conditions and engine-to-engine variability. Given both the wide array of products on which engines are placed and the variety of environmental issues applicable to operating the equipment, the gas engine will not develop the rated gross power when used in a given piece of power equipment (actual "on-site" or net power). This difference is due to a variety of factors including, but not limited to, accessories (air cleaner, exhaust, charging, cooling, carburetor, fuel pump, etc.), application limitations, ambient operating conditions (temperature, humidity, altitude), and engine-to-engine variability. Due to manufacturing and capacity limitations, Briggs & Stratton may substitute an engine of higher rated power for this Series engine.

TRACTOR - - MODEL NUMBER 917.989800

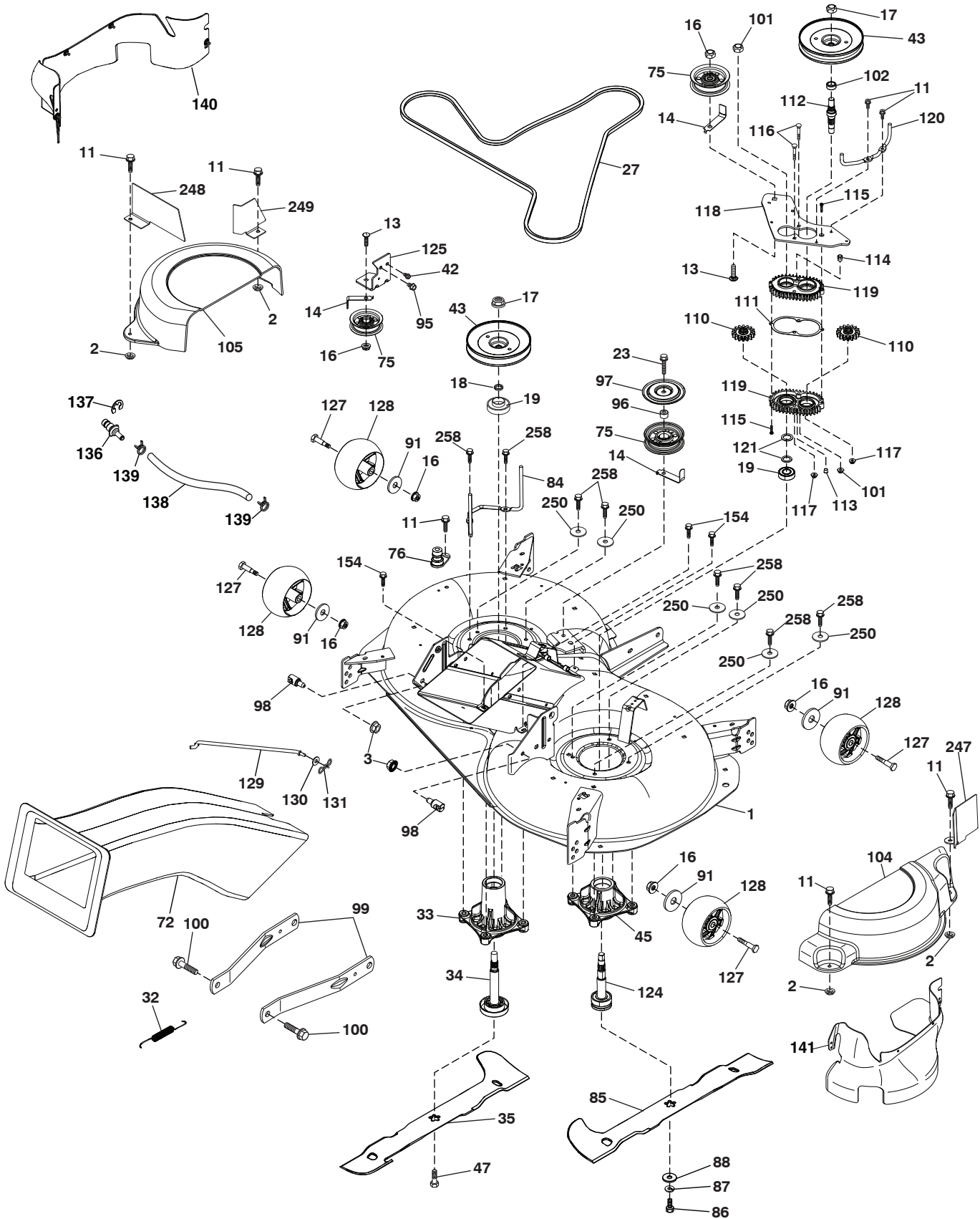
STEERING ASSEMBLY

KEY NO.	PART NO.	DESCRIPTION
1	414851X428	Wheel, Steering
2	195968	Axle Asm., Front
4	403087	Spindle Asm., LH
5	403088	Spindle Asm., RH
6	6266H	Bearing, Race Thrust Harden
7	121748X	Washer 25/32 x 1-5/8 x 16 Ga.
8	12000029	Ring, Klip #T5304-75
9	184946X667	Cap, Spindle
13	121749	Washer 25/32 x 1-1/4 x 16 Ga.
14	10040600	Washer, Lock Hvy Hlcl Spr 3/8
15	73540600	Nut, Crown Lock 3/8-24 unf
16	585869202	Shaft Steering
19	194729	Plate Steering
20	198375X428	Boot, Steering
21	186737	Adapter, Wheel Steering
22	585029802	Strg. Bearing
26	414852X428	Insert, Wheel Cap
27	19211616	Washer 21/32 x 1 x 16 Ga.
28	17000612	Screw 3/8-16 x 3/4
33	10040500	Washer Lock Hvy. HLCL SPR 5/16
35	194732	Gear, Sector Plate
45	19113812	Washer 11/32 ID x 2-3/8 OD x 12 Ga.
53	188967	Washer Hardened .793 x 1.637 x .060
58	194747	Bolt Shoulder Sector Pivot CFM
59	194748	Washer Thrust Sector Steering
60	73971000	Nut Flange Lock 5/8-11
61	194740	Draglink, LH
62	194741	Draglink, RH
63	17000512	Screw 5/16-18 x 3/4
64	199849	Retainer Clip Spring Steering
66	71020748	Bolt Hex Fghd 7/16-14 x 3 Serr
67	194737	Bushing PM Front Axle
68	73900700	Nut Lock Flange 7/16-14 Gr. 5
69	199162	Washer 1.5 x .505 x .118
70	585338801	Bracket Deck Susp. Front
71	190752	Shaft Exten.
72	428982	Bolt Fin. Hex 5/16-18 x 4 W/Patch
75	580683701	Pinion
76	580683601	Screw Head Socket
122	444962	Cap Gear Sector

NOTE: All component dimensions given in U.S. inches
1 inch = 25.4 mm

TRACTOR - - MODEL NUMBER 917.989800

MOWER DECK



TRACTOR - - MODEL NUMBER 917.989800

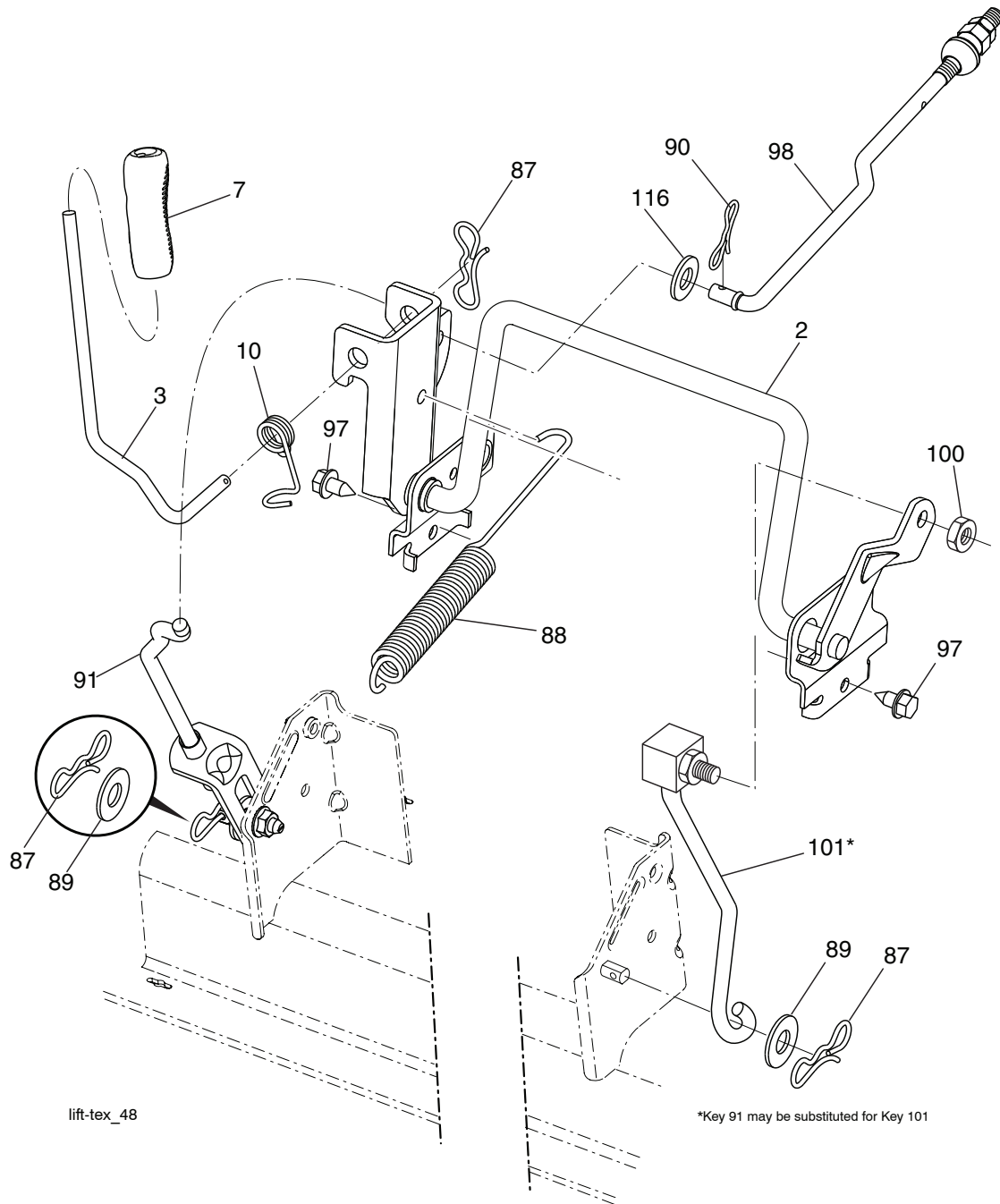
MOWER DECK

KEY NO.	PART NO.	DESCRIPTION	KEY NO.	PART NO.	DESCRIPTION
1	447738	Deck Weldment	114	588170501	Vent Breather
2	423062	Palnut	115	18031016	Screw Torx #10-24 x 1
3	73900500	Nut Lock Hex Flange 5/16-18	116	72110414	Bolt 1/4-20 x 1.75 Gr. 5
11	137729	Screw Thd Roll 1/4-20 X 5/8	117	73900400	Nut Hex Flange 1/4-20 unc
13	72110612	Bolt Carr Sh 3/8-16 X 1-1/2 Gr. 5	118	443232	Arm Clutching
14	156085	Keeper Belt Idler	119	438166	Gearcase Subasm
16	73900600	Nut Lock FIG 3/8 - 16 unc	120	443236	Keeper Belt RH
17	400234	Nut Flange Lock Top	121	436985	Washer
18	187690	Washer Spacer Mandrel	124	581650701	Shaft Asm Mndrel Short
19	585323901	Bearing Mandrel	125	440420	Bracket Idler Chassis
23	17490628	Screw Thdrol 3/8-16 X 1-3/4	127	193406	Bolt Shoulder 3/8-16 x 3-5/8 Gr. 5
27	445886	V-Belt Drive	128	174873	Wheel Gauge
32	446205	Spring Return Deck	129	443237	Rod Anti-Sway
33	580796101	Mandrel Asm. Tall	130	19131312	Washer 13/32 x 13/16 x 12 Ga.
34	580854701	Shaft Asm Mndrel Tall	131	194208	Pin Cotter 5/16 Bow Tie Lock
35	581517901	Blade Mower LH	136	439639	Washout Port Remote
42	17000512	Screw 5/16-18 x 3/4	137	12000029	Ring Klip
43	443239	Pulley Mandrel	138	447667	Washout Port Hose
45	581650801	Mandrel Asm. Short	139	440742	Hose Clamp
47	584309301	Screw	140	501580001	Guard French LH
72	581454102	Chute Upper	141	501579602	Guard French RH
75	131494	Pulley Idler Flat	154	199855	Screw Thd Roll 1/4-20 x 1/2
76	439640	Washout Port	247	581263402	Guard Steel
84	443235	Keeper Belt LH Mandrel	248	581263602	LH Rear French Steel Guard
85	581518001	Blade Mower RH	249	581263502	LH Front French Steel Guard
86	181713	Bolt 3/8-24 x 1.50 Gr. 8	250	19111212	Washer 11/32 x 3/4 x 12 Ga.
87	10030600	Washer Lock Hvy 3/8	258	584953901	Bolt Hex Wsh. Hd 313-18 x 1.19
88	140296	Washer Hard Blade Mower Vented	--	587126105	Mandrel Assembly-Tall(Includes Housing (key #33), Shaft Assembly (key #34), and Bearing (key #19) Only - Pulley/Nut/Washer And Blade Bolt/Washers Not Included)
91	19132012	Washer 13/32 x 1-1/4 x 12 Ga.	--	581650501	Mandrel Assembly-Short(Includes Housing (key #45), Shaft Assembly (key #124), and Bearing (key #19) Only - Pulley/Nut/Washer And Blade Bolt/Washers Not Included)
95	17000612	Screw 3/8-16 x 3/4	--	588108601	Replacement Mower Complete
96	400271	Spacer			
97	182061	Shield Idler Mower			
98	195161	Stud Fastener			
99	195186	Arm Suspension Mower Rear			
100	196539	Bolt Shoulder			
101	73680900	Nut Crownlock 9/16 - 18 unc			
102	402511	Spacer Bearing Swing Plate			
104	581714001	Mandrel Cover RH			
105	444755	Mandrel Cover LH			
110	587934801	Gear Output			
111	436979	Gasket Gearcase			
112	443852	Shaft Gearcase Adapter			
113	438533	Plug Oil			

NOTE: All component dimensions given in U.S. inches
1 inch = 25.4 mm

TRACTOR - - MODEL NUMBER 917.989800

LIFT ASSEMBLY



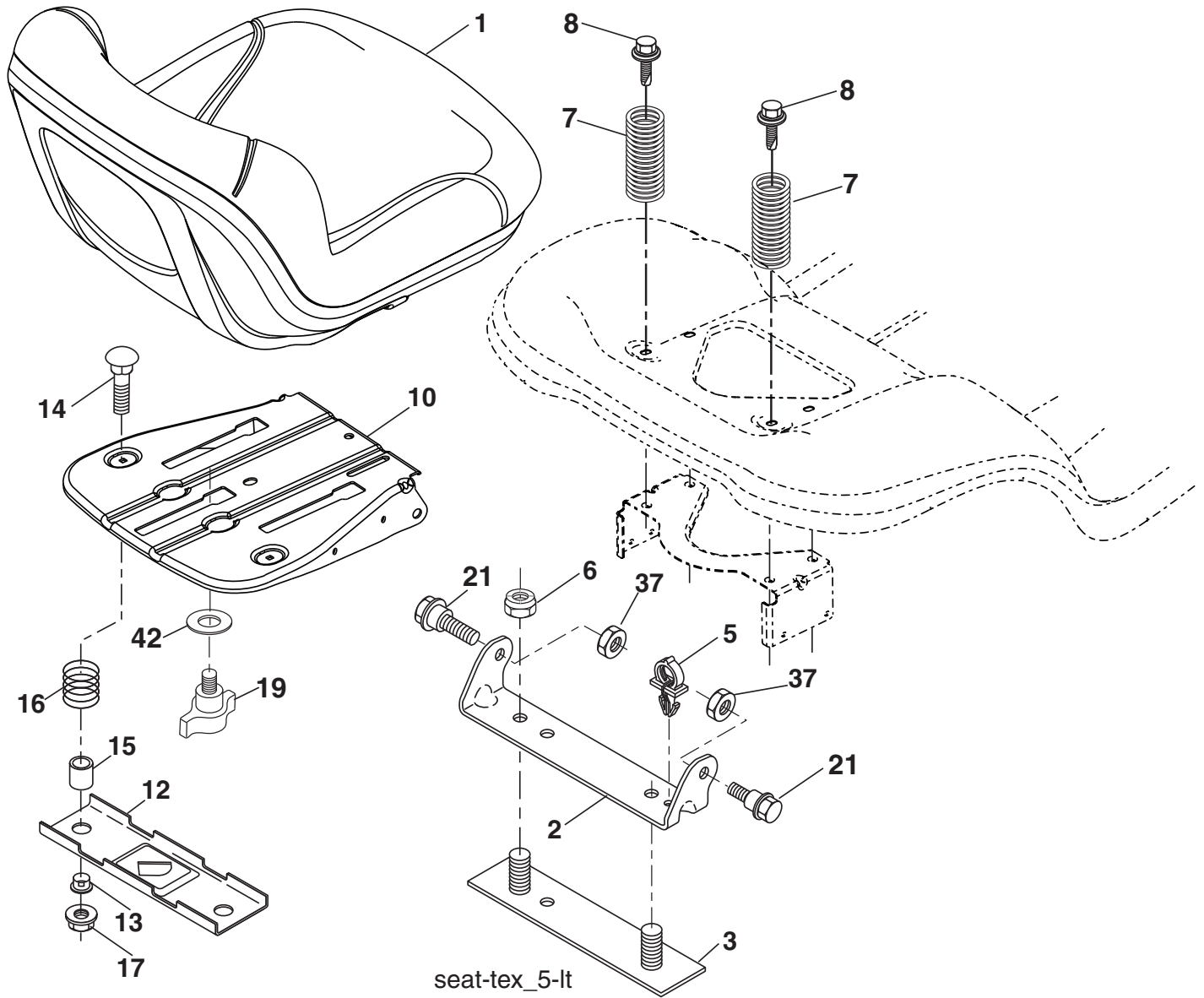
KEY NO.	PART NO.	DESCRIPTION
2	436996	Deck Lift
3	195231	Lever Asm., Lift RH
7	445060X428	Grip, Lever
10	196314	Spring Torsion
87	194209	Pin Cotter 7/16 Bow Tie Lock
88	445496	Spring Lift Assist
89	19191912	Washer 17/32 x 1-3/16 x 12 Ga.
90	194208	Pin Cotter 5/16 Bow Tie Lock

KEY NO.	PART NO.	DESCRIPTION
91	195181	Link Lift Susp Mower Rear
97	17490608	Screw 3/8-16 x 1/2
98	195270	Link Lift Susp. Front Mower
100	73930600	Nut Centerlock 3/8-16 unc
101	407003	Link Asm. Lift Fxd.
116	19151516	Washer 15/32 x 15/16 x 16 Ga.

NOTE: All component dimensions given in U.S. inches
1 inch = 25.4 mm

TRACTOR -- MODEL NUMBER 917.989800

SEAT ASSEMBLY



seat-tex_5-lt

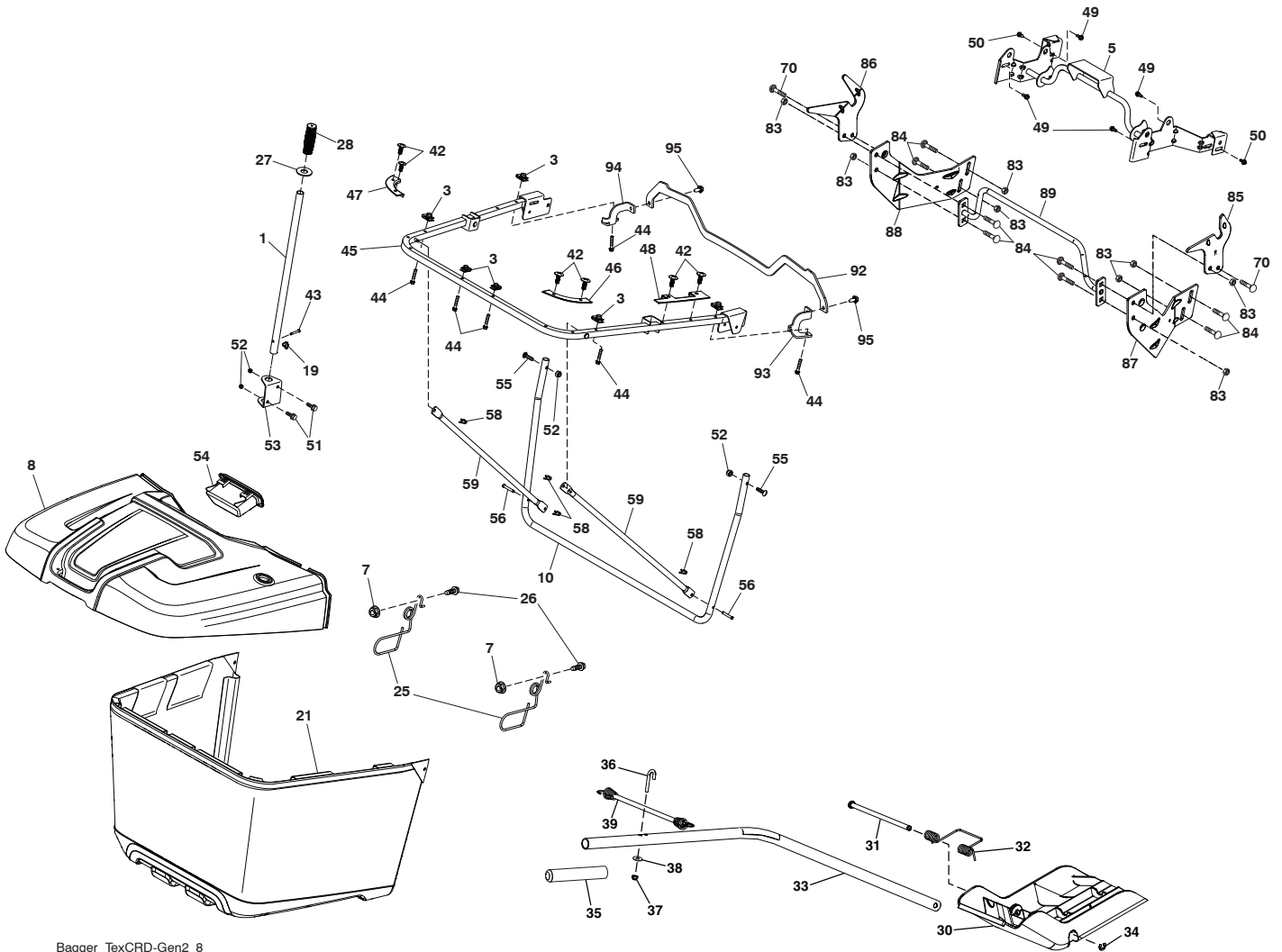
KEY NO.	PART NO.	DESCRIPTION
1	586507601	Seat
2	180166	Bracket Pivot Fender
3	140675	Strap Asm. Fender
4	73800600	Nut, Lock w/Ins. 3/8-16 unc
5	587613301	Spring, Seat Cprsn
6	171877	Bolt 5/16-18 unc x 3/4 w/Sems
7	441805	Pan, Seat
8	199370	Bracket Mount
9	121248X	Bushing Snap
10	7250412	Bolt 1/4-20 x 1-1/2
11	134300	Spacer Split

KEY NO.	PART NO.	DESCRIPTION
12	123740X	Spring
13	123976X	Nut Lock 1/4 LGE FLG Gr. 5
14	199372	Knob Seat
15	587907801	Bolt, Shoulder 5/16-18 X 5/8
16	73800500	Nut, Lock 5/16-18 unc
17	199371	Washer Cup

NOTE: All component dimensions give in U.S. inches
1 inch = 25.4 mm

TRACTOR - - MODEL NUMBER 917.989800

BAGGER



Bagger_TexCRD-Gen2_8

TRACTOR - - MODEL NUMBER 917.989800

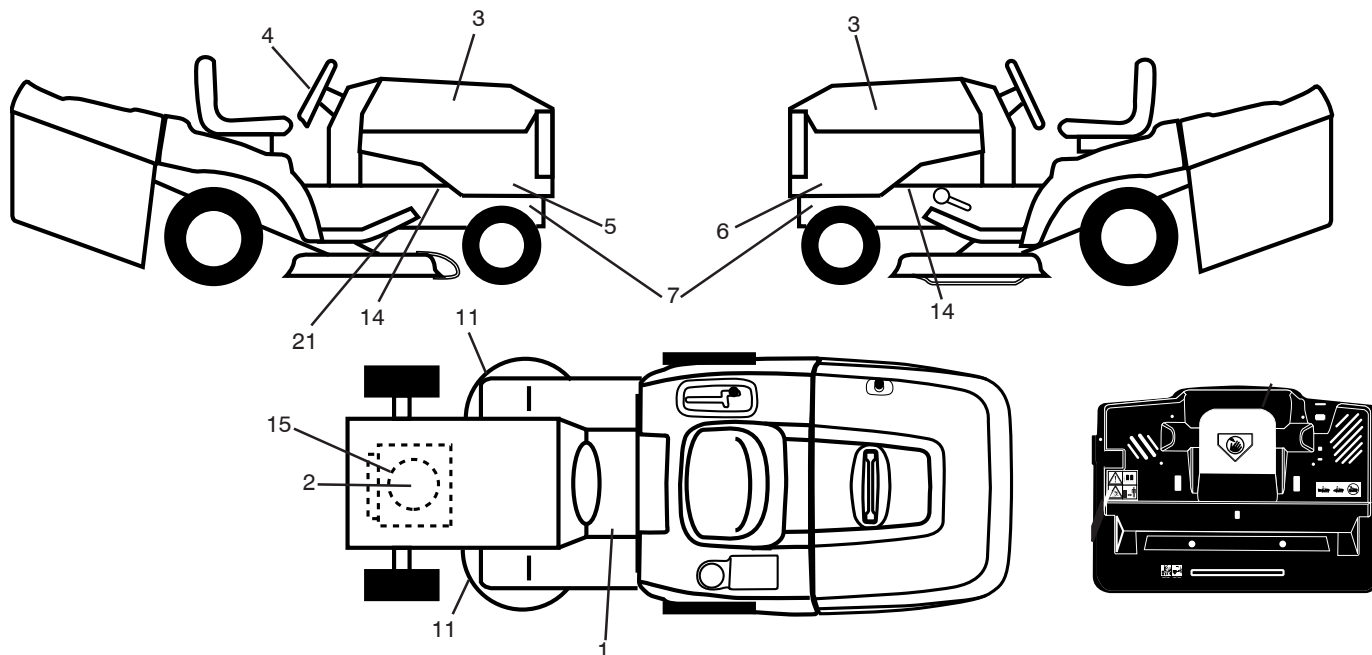
BAGGER

KEY NO.	PART NO.	DESCRIPTION	KEY NO.	PART NO.	DESCRIPTION
1	428610	Tube Handle Bagger	49	171873	Bolt Shoulder 5/16-18 TT
3	174814	Nut Push	50	171877	Bolt 5/16-18 unc x 3/4 W/SEMS
5	443762	Frame Asm Top Bagger	51	72110506	Bolt RDHDSQNK 5/16-18 unc x 3/4
7	73900400	Nut Hex Flange 1/4-20 unc	52	73800500	Nut Lock HX W/INS 5/16-18 UNC
8	444082	Cover Bagger	53	444195	Bracket Dump Handle
10	443755	Frame Front	54	444078X428	Bagger TOP Front Handle
19	194208	Cotter Pin 5/16 Bow Tie	55	72140512	Bolt Rdhd Sq 5/16-18UNCX1 1/2
21	581337102	Bag Asm	56	420306	Pin Clevis .1830DX1.26 long
25	445528	Latch Bagger	58	85179	Clip Retainer PM
26	17490412	Screw Hexwsh Thdrol 1 14-20 x 3/4	59	444763	Bagger Spread Tube
27	445529	Grommet Rubber	70	17000612	Bolt 3/8-16X3/4
28	165787	Grip Handle Black	83	73800600	Nut Lock Hex w/Ins 3/8-16
30	437452	Plug	84	72110608	Bolt RDHD SQNK 3/8-16 x 1 Gr. 5
31	435861	Pin Hinge	85	581314402	Bracket RH Pivot
32	437454	Spring Double Torsion	86	581314302	Bracket LH Pivot
33	438451	Shaft Mulch Plug	87	581314802	Bracket RH
34	437988	E-Ring 5/16	88	581314702	Bracket LH
35	439139	Grip Mulch Plug	89	581315104	Weldment Offset Strut
36	439098	Bolt J	92	586052302	Bracket Top Support
37	69180	Nut Lock #10-24 unc	93	586052402	Bracket Support RH
38	19070818	Washer 7/32 x 1/2	94	586052502	Bracket Support LH
39	445794	Bungee	95	17000512	Screw 5/16-18 x 3/4
42	440428	Christmas Tree Clip			
43	126875X	Clevis Pin			
44	199687	Bolt 1/4-20 1.50			
45	443754	Upper U Frame Weldment			
46	445541	Bagger Corner Close-Out RH			
47	444079	Bagger Corner Close-Out LH			
48	444080	Top Bagger Side Close-Out			

NOTE: All component dimensions given in U.S. inches
1 inch = 25.4 mm

TRACTOR - - MODEL NUMBER 917.989800

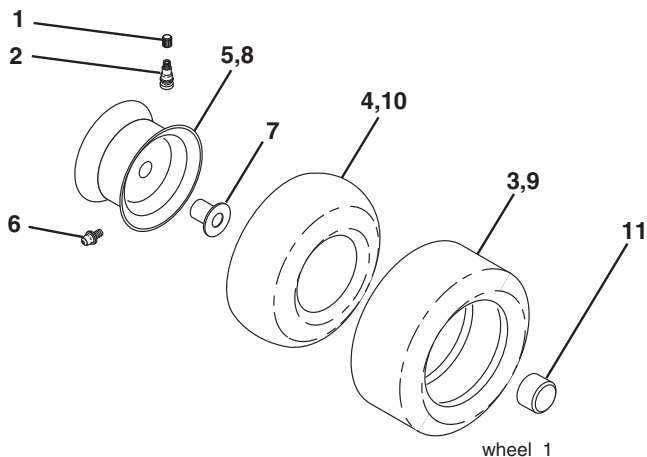
DECALS



KEY NO.	PART NO.	DESCRIPTION
1	581578301	Decal, Warning
2	579799501	Decal, Hp Engine
3	579779601	Decal, Hood RH/LH
4	581894601	Decal, Steering Wheel
5	586207801	Decal, Hood Side RH
6	586207802	Decal, Hood Side LH
7	581579801	Decal, Warning Service/Fire
11	581579101	Decal, Mower Cut Finger Symbol
14	581579601	Decal, Chassis Hot Muffler
15	581579701	Decal, Warning Eng. Symbols
21	441189	Decal, Hex Belt Sch

KEY NO.	PART NO.	DESCRIPTION
--	588821501	Decal, Instr. Mulchplug
--	444619	Decal, Bypass Backplate
--	420098X428	Pad Footrest RH
--	419267X428	Pad Footrest LH
--	115804750	Manual, Operator's (Euro)
--	115804950	Manual, Operator's (Scan)
--	115804820	Manual, Operator's (Ebloc)
--	115805030	Manual, Operator's (Baltic)
--	115805126	Manual Parts

WHEELS & TIRES



KEY NO.	PART NO.	DESCRIPTION
1	59192	Cap Valve Tire
2	65139	Stem Valve
3	106222X	Tire Front 15 x 6-6
4	59904	Tube Inner Front
5	106732X613	Rim Asm 6"
6	278H	Fitting Grease
7	9040H	Bearing Flange
8	106108X613	Rim Asm 8"
9	420531	Tire Rear 18 x 9.5-8
10	7152J	Tube Rear 9.5 x 8
11	104757X428	Cap Axle Blk 1 50 x 1 00
--	144334	Sealant, Tire (10 oz. Tube)

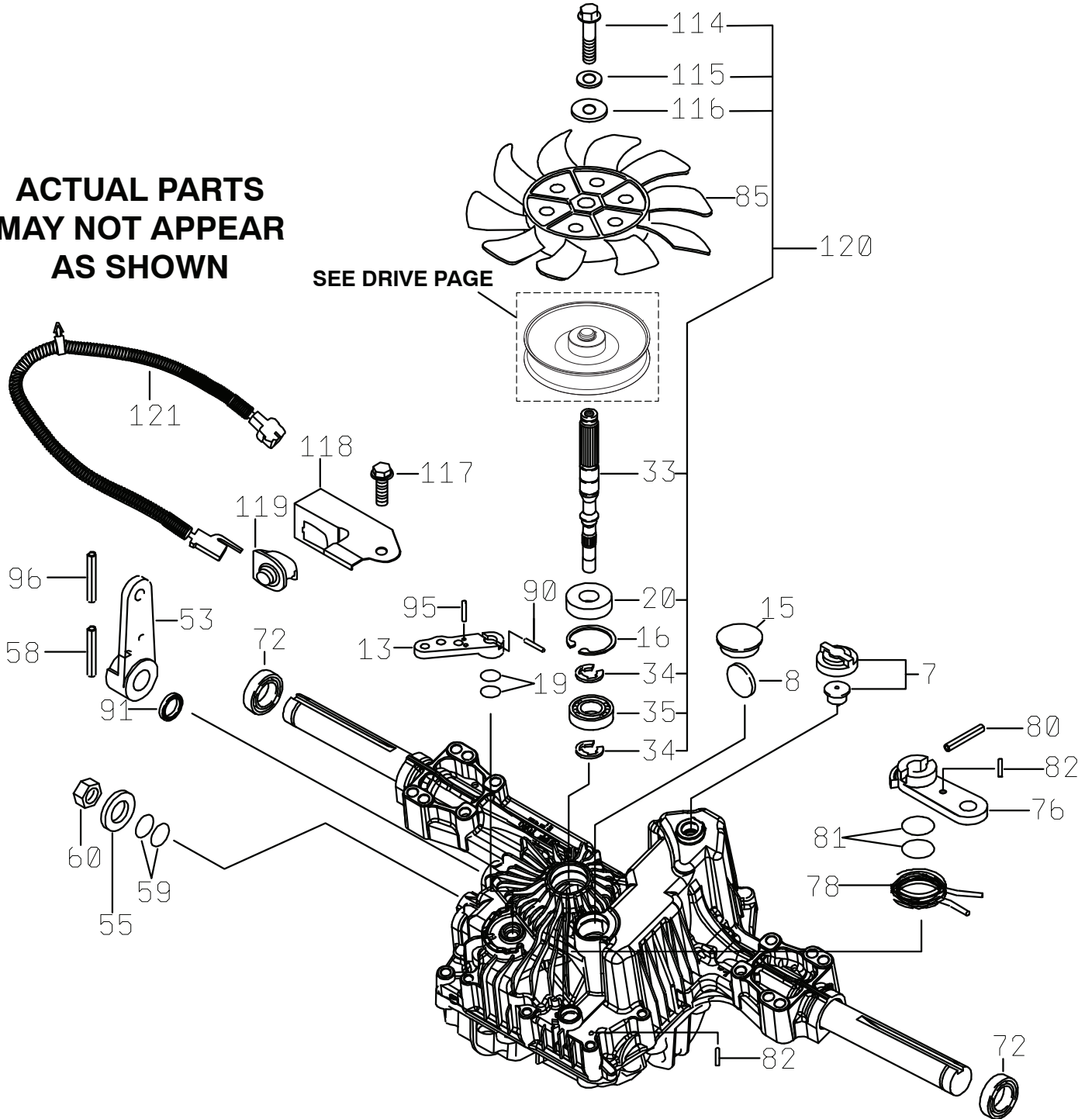
NOTE: All component dimensions given in U.S. inches
1 inch = 25.4 mm

SERVICE NOTES

TUFFTORQ TRANSAXLE MODEL NUMBER K46DF 7A646084431

**ACTUAL PARTS
MAY NOT APPEAR
AS SHOWN**

SEE DRIVE PAGE



TRACTOR - - MODEL NUMBER 917.989800
TUFFTORQ TRANSAXLE - MODEL NO. K46DF

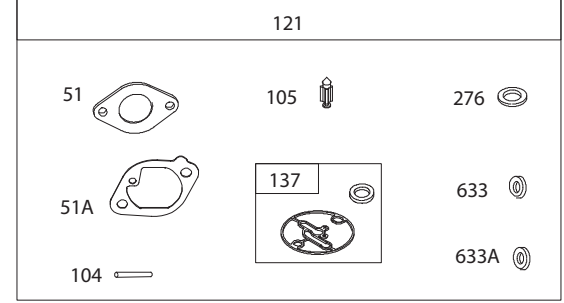
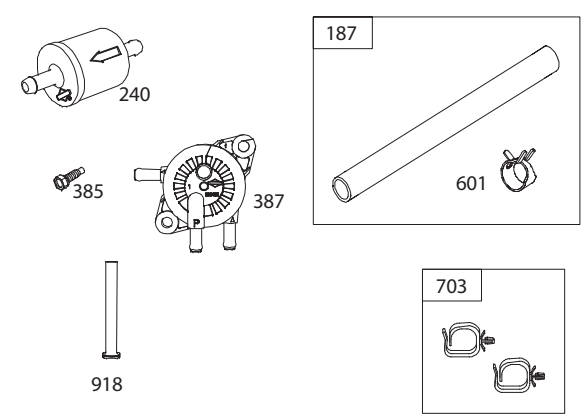
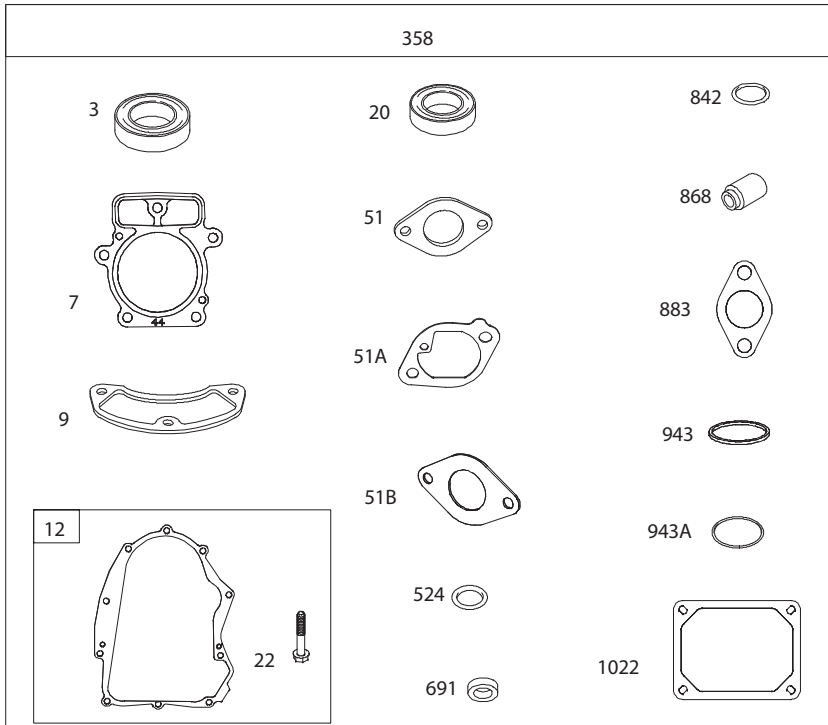
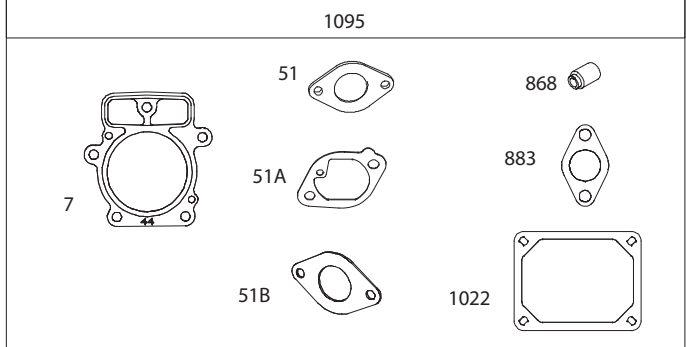
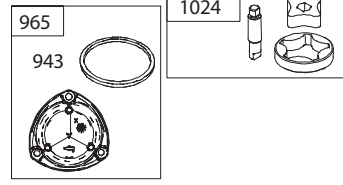
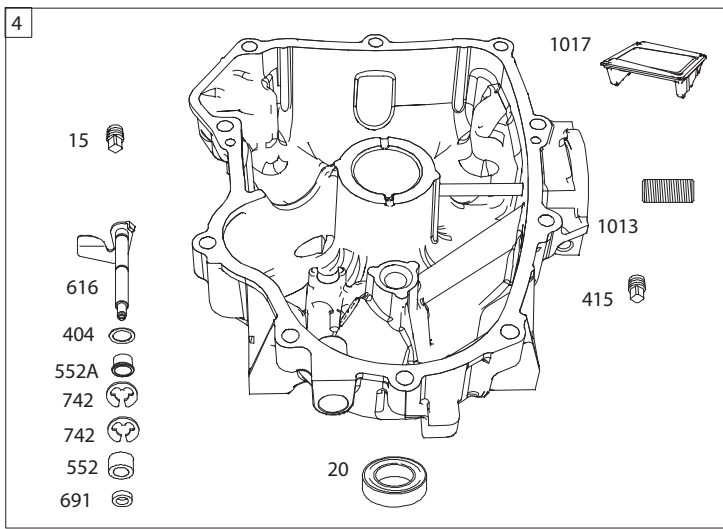
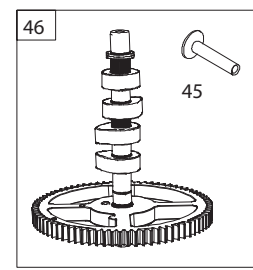
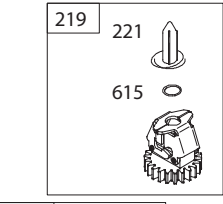
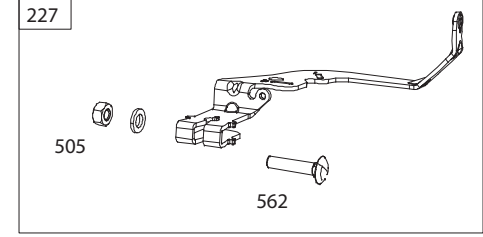
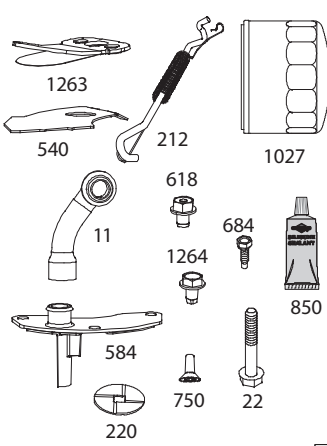
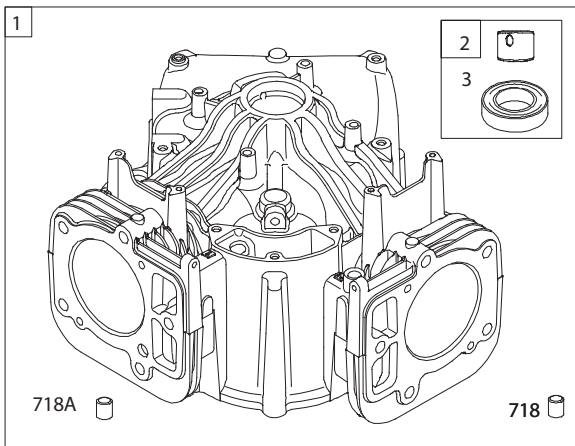
KEY NO.	PART NO.	DESCRIPTION
--	--	K46DF TRANSAXLE
7	588190701	VENT VALVE
8	414396	MAGNET
13	414398	BYPASS LEVER
15	588190901	SEALING CAP 30
16	414400	SNAP RING C 35
19	414401	O-RING 1A P10A
20	414402	SEAL TC 153507
33	588191001	PUMP SHAFT
34	588191101	E-RING 12
35	588191301	BEARING 6202
53	588461701	CONTROL LEVER
55	415924	WASHER 12
58	414406	ROLL PIN 6 * 40
59	415926	O-RING 1A P14
60	415927	NUT 12
72	414407	SEAL 19 * 32 * 8
76	588208201	BRAKE ARM
78	414409	BRAKE RETURN SPRING
80	414410	SPRING PIN 5 * 32
81	414411	O-RING 1A P12
82	414412	SPRING PIN 4 * 16
85	588191601	FAN WHITE
90	414418	SPRING PIN 3.0A * 20
91	414419	OIL SEAL 16 * 22 * .03
95	415850	SPRING PIN 3.0A * 16
96	414420	ROLL PIN 3.5 * 40
114	588191701	BOLT
115	588191801	LOCK WASHER
116	588191901	WASHER
117	588192001	TAPPING SCREW 8 * 20
118	415929	SWITCH BRACKET
119	588192201	SWITCH 6440-11 DELTA
120	588192301	PUMP SHAFT/BEARING KIT
121	441262	PIGTAIL WIRE

NOTE: All component dimensions given in U.S. inches
1 inch = 25.4 mm

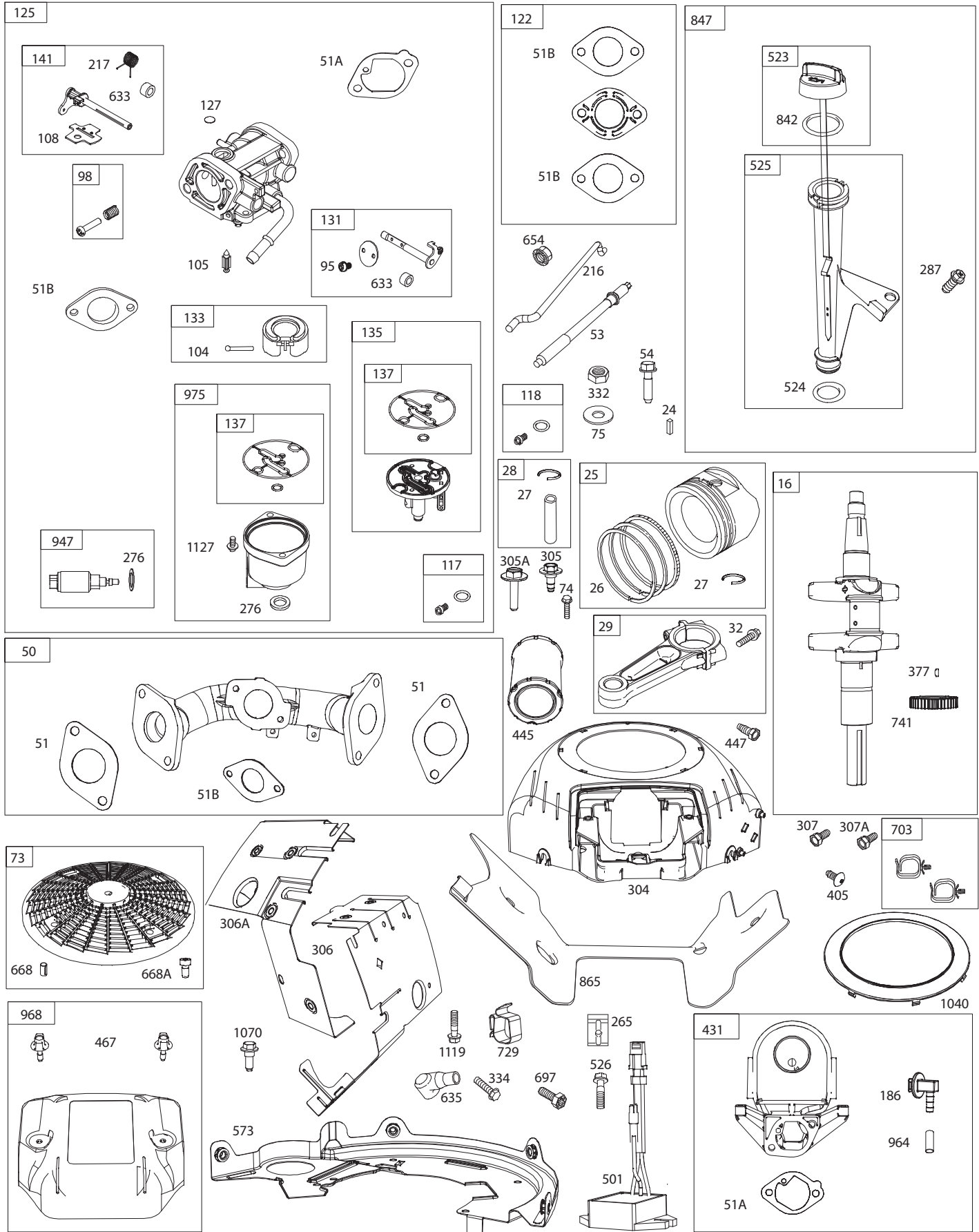
TRACTOR - - MODEL NUMBER 917.989800

BRIGGS & STRATTON ENGINE-MODEL NUMBER 40R677, TYPE NUMBER 0014-B1

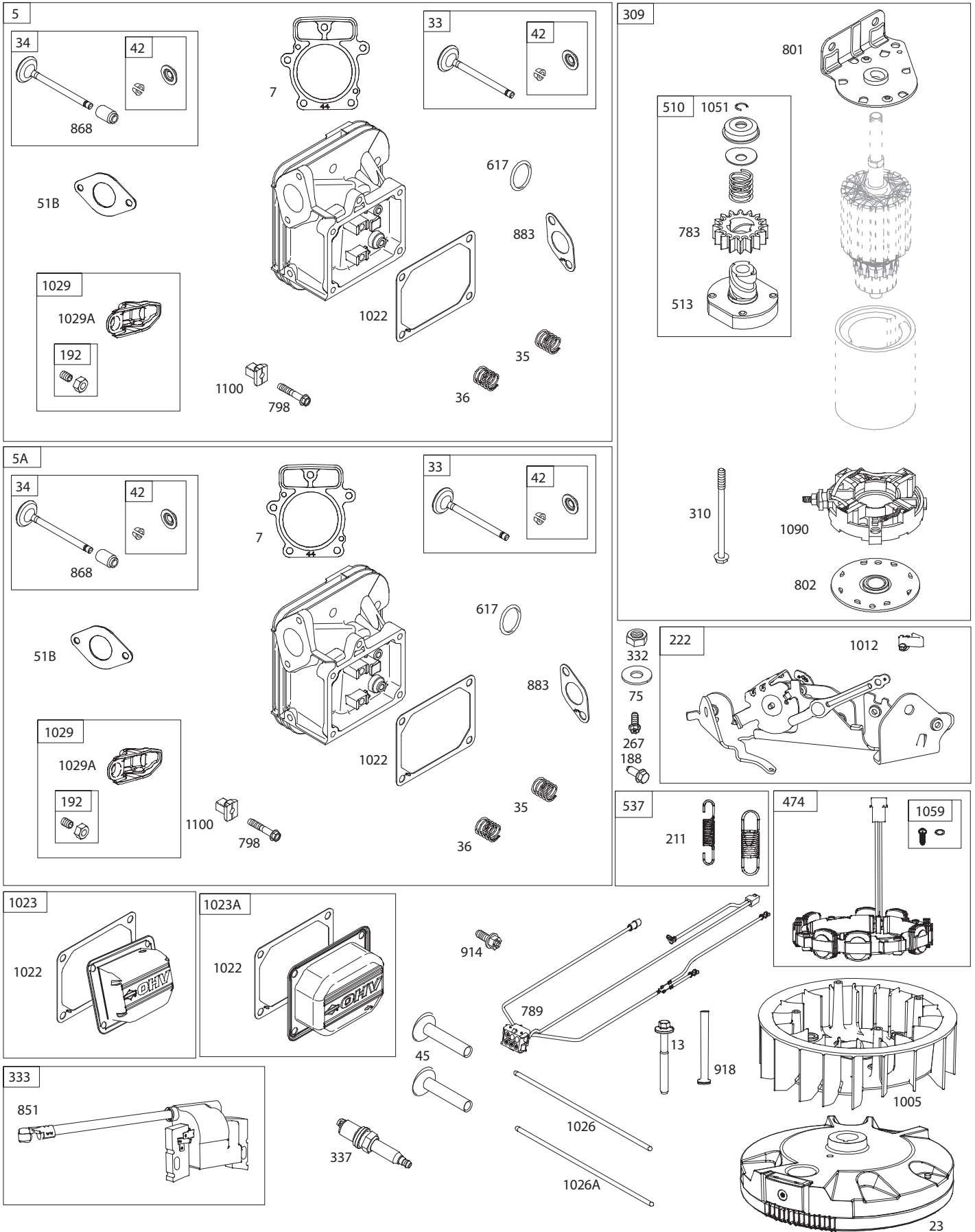
48	1036	1058	1329	1330
----	------	------	------	------



**TRACTOR - - MODEL NUMBER 917.989800
BRIGGS & STRATTON ENGINE-MODEL NUMBER 40R677, TYPE NUMBER 0014-B1**



TRACTOR - - MODEL NUMBER 917.989800
BRIGGS & STRATTON ENGINE-MODEL NUMBER 40R677, TYPE NUMBER 0014-B1



TRACTOR - - MODEL NUMBER 917.989800
BRIGGS & STRATTON ENGINE-MODEL NUMBER 40R677, TYPE NUMBER 0014-B1

KEY NO.	PART NO.	DESCRIPTION	KEY NO.	PART NO.	DESCRIPTION
1	594969	Cylinder Assembly	51	690949	Gasket-Intake
2	797673	Bushing/Seal Kit (Magneto Side)	51A	699800	Gasket-Intake
3	391086s	Seal-Oil (Magneto Side)	51B	699803	Gasket-Intake
4	594974	Sump-Engine	53	690951	Stud (Carburetor)
5	796231	Head-Cylinder (Cylinder #1)	54	699816	Screw (Intake Manifold)
5A	796232	Head-Cylinder (Cylinder #2)	73	494439	Screen-Rotating
7	693997	Gasket-Cylinder Head	74	698425	Screw (Rotating Screen)
9	690937	Gasket-Breather	75	691056	Washer (Flywheel)
11	594163	Tube-Breather	95	690718	Screw (Throttle Valve)
12	594195	Gasket-Crankcase (Includes 10 Engine Sump Screws)	98	699721	Kit-Idle Speed
		(Used Before Date Code: 15071600).	104	694918	Pin-Float Hinge
			105	698537	Valve-Float Needle
13	592244	Screw (Cylinder Head)	108	699808	Valve-Choke
15	690946	Plug-Oil Drain	117	791406	Jet-Main (Standard)
16	796237	Crankshaft	118	699820	Jet-Main (High Altitude) (5000 > 9000 Feet)
20	795387	Seal-Oil (PTO Side)	121	699814	Kit-Carburetor Overhaul
22	694966	Screw (Crankcase Cover/Sump)	122	699802	Spacer-Carburetor
23	594169	Flywheel	125	591678	Carburetor
24	222698s	Key-Flywheel (Aluminum)	127	699810	Plug-Welch
25	793647	Piston Assembly (Standard)	130	699809	Valve-Throttle
	793648	Piston Assembly (.020" Oversize)	131	699812	Kit-Throttle Shaft
26	791787	Ring Set (Standard)	133	694914	Float-Carburetor
	791792	Ring Set (.020" Oversize)	135	591701	Tube-Fuel Transfer
27	690975	Lock-Piston Pin	137	698781	Gasket-Float Bowl
28	696581	Pin-Piston	141	591700	Kit-Choke Shaft
29	796209	Rod-Connecting	186	845141	Connector-Hose (EVAP)
32	690976	Screw (Connecting Rod)	187	791766	Line-Fuel (Cut to Required Length)
33	697576	Valve-Exhaust	188	691108	Screw (Control Bracket)
34	792200	Valve-Intake	192	690083	Adjuster-Rocker Arm
35	694865	Spring-Valve (Intake)	211	593724	Spring-Governed Idle (Black)
36	694865	Spring-Valve (Exhaust)	212	792265	Link-Throttle
42	499586	Keeper-Valve	216	796229	Link-Choke
45	690977	Tappet-Valve	217	799771	Spring-Choke Return
46	792555	Camshaft	219	793338	Gear-Governor
48	N/A	Short Block	220	799772	Washer (Governor Gear)
50	699801	Manifold-Intake			

TRACTOR - - MODEL NUMBER 917.989800
BRIGGS & STRATTON ENGINE-MODEL NUMBER 40R677, TYPE NUMBER 0014-B1

KEY NO.	PART NO.	DESCRIPTION	KEY NO.	PART NO.	DESCRIPTION
221	841026	Cup-Governor	501	593490	Regulator
222	592555	Bracket-Control	505	691029	Nut (Governor Control Lever)
227	798856	Lever-Governor Control	510	592602	Drive-Starter
240	691035	Filter-Fuel	513	692024	Clutch-Drive
265	691024	Clamp-Casing	523	594528	Dipstick
267	792629	Screw (Casing Clamp)	524	691032	Seal-Dipstick Tube
276	695410	Washer-Sealing (Aluminum)	525	691037	Tube-Dipstick
287	697820	Screw (Dipstick Tube)	526	691108	Screw (Regulator)
304	591656	Housing-Blower	537	594910	Kit-Governor/Idle Spring (Red)
305	594618	Screw (Blower Housing)	540	594325	Plate-Baffle
		(1/4-20x.51)	552	796638	Bushing-Governor Crank
305A	790690	Screw (Blower Housing)	552A	690553	Bushing-Governor Crank
		(#10-16x.6)	562	690311	Screw (Governor Control Lever)
306	591666	Shield-Cylinder (Cylinder #2)	573	594902	Plate-Back
306A	796852	Shield-Cylinder (Cylinder #1)	584	594164	Cover-Breather Passage
307	691003	Screw (Cylinder Shield)	601	691038	Hose-Clamp (Black)
		(#10-24x.43)	615	698290	Retainer-Governor Shaft
307A	691108	Screw (Cylinder Shield)	616	691045	Crank-Governor
		(1/4-20x.66)	617	697891	Seal-O Ring (Intake Manifold) (Red)
309	592599	Motor-Starter	618	594326	Screw (Baffle Plate)
310	690323	Screw (Starter Motor)	633	699813	Seal-Choke/Throttle Shaft (Choke and Throttle Shaft)
332	691059	Nut (Flywheel)			Seal-Choke/Throttle Shaft
333	592846	Armature-Magneto	633A	806131	Boot-Spark Plug
334	691061	Screw (Magneto Armature)	635	66538s	Nut (Carburetor)
337	792015	Plug-Spark	654	690958	Spacer (Rotating Screen)
358	699823	Gasket Set-Engine	668	691500	Spacer (Rotating Screen)
377	690979	Key-Woodruff	668A	691215	Screw (Breather Passage Cover)
385	797409	Screw (Fuel Pump)	684	691108	Seal-Governor Shaft
387	808656	Pump-Fuel	691	790574	Screw (Drive Cap)
404	690442	Washer (Governor Crank)	697	591909	Clip (Fuel Line)
405	594937	Screw (Back Plate)	703	691010	Pin-Locating
415	794903	Plug	718	690959	Pin-Locating (Cylinder)
431	591662	Elbow-Intake	718A	594988	Clip-Wire
445	594201	Filter-Air Cleaner Cartridge	729	593826	Gear-Timing
447	691003	Screw (Air Guide Cover)	741	690980	Retainer-E Ring
		(#10-24x.43)	742	690328	Screw (Oil Pump Cover)
467	591660	Knob-Air Cleaner	750	796208	Gear-Pinion (Steel)
474	592830	Alternator	783	592600	

TRACTOR - - MODEL NUMBER 917.989800
BRIGGS & STRATTON ENGINE-MODEL NUMBER 40R677, TYPE NUMBER 0014-B1

KEY NO.	PART NO.	DESCRIPTION	KEY NO.	PART NO.	DESCRIPTION
789	591392	Harness-Wiring	1040	791237	Plate-Trim
798	697890	Screw (Rocker Arm)	1051	691265	Ring-Retaining
801	691283	Cap-Drive	1058	N/A	Operator's Manual
802	691286	Cap-End	1059	698516	Kit-Screw/Washer (Alternator)
842	691031	Seal-O Ring (Dipstick Tube)	1070	593638	Screw (Flywheel Fan)
847	499602	Dipstick/Tube Assembly	1090	691293	Retainer-Brush
850	100106	Sealant-Liquid	1095	699822	Gasket Set-Valve
851	493880s	Terminal-Spark Plug	1100	791959	Pivot-Rocker Arm
865	591667	Cover-Air Guide	1119	691183	Screw (Alternator)
868	690968	Seal-Valve	1127	695407	Screw (Float Bowl)
883	690970	Gasket-Exhaust	1263	594166	Reed-Breather
914	691127	Screw (Rocker Cover)	1264	594165	Screw (Breather Reed)
918	593998	Hose-Vacuum (Rocker Cover #1)	1329	N/A	Replacement Engine
943	796222	Seal-O Ring (Oil Pump Cover)	1330	273521	Repair Manual
943A	690589	Seal-O Ring (Oil Pump Cover)			
947	798779	Solenoid-Fuel			
964	799159	Cap-Connector			
965	796221	Cover-Oil Pump			
968	591658	Cover-Air Cleaner			
975	591699	Bowl-Fuel			
1005	593640	Fan-Flywheel		Carburetor Overhaul Kit	Key No. 121
1012	592556	Retainer-Link		Engine Gasket Set	Key No. 358
1013	690954	Nipple-Oil Filter		Valve Gasket Set	Key No. 1095
1017	796214	Screen-Oil Pump			
1022	690971	Gasket-Rocker Cover			
1023	793146	Cover-Rocker (Cylinder #1)			
1023A	499600	Cover-Rocker (Cylinder #2)			
1024	796220	Pump-Oil			
1026	690981	Rod-Push (Exhaust) (Steel)			
1026A	690982	Rod-Push (Intake) (Aluminum)			
1027	492932s	Filter-Oil			
1029	690972	Arm-Rocker			
1029A	807323	Arm-Rocker			
1036		Label-Emissions (Available from a Briggs & Stratton Authorized Dealer)			

NOTE: All component dimensions given in U.S. inches
1 inch = 25.4 mm

SERVICE NOTES

SERVICE NOTES

LIMITED WARRANTY ON CRAFTSMAN RIDING EQUIPMENT

For two (2) years from the date of purchase, if this Craftsman Riding Equipment is maintained, lubricated and tuned up according to the instructions in the owner's manual, Sears will repair or replace free of charge any parts that are found to be defective in material or workmanship according to the guidelines of coverage listed below. Sears will also provide free labor for these applicable warranted parts for the two full years. During the first 30 days of purchase, there will be no charges to service the product at your home for issues covered by this warranty. (See exclusions below). For your convenience, IN HOME warranty service will still be available after the first 30 days of purchase, but a trip charge will apply. This charge will be waived if the Craftsman product is dropped off at an authorized Sears location. For the nearest authorized Sears location, please call 1-800-4-MY-HOME®. This warranty applies only while this product is within the United States.

This Warranty does not cover:

- Expendable items which become worn during normal use, including but not limited to blades, spark plugs, air cleaners, belts, and oil filters.
- Standard Maintenance Servicing, oil changes, or tune-ups
- Tire replacement or repair caused by punctures from outside objects, such as nails, thorns, stumps, or glass.
- Repairs necessary because of operator abuse, including but not limited to, damage caused by towing objects beyond the capability of the riding equipment, impacting objects that bend the frame or crankshaft, or over-speeding the engine.
- Repairs necessary because of operator negligence, including but not limited to, electrical and mechanical damage caused by improper storage, failure to use the proper grade and amount of engine oil, failure to keep the deck clear of flammable debris, or failure to maintain the equipment according to the instructions contained in the owner's manual.
- Engine (fuel system) cleaning or repairs caused by fuel determined to be contaminated or oxidized (stale). In general, fuel should be used within 30 days of its purchase date.
- Normal deterioration and wear of the exterior finishes, or product label replacement.
- Riding equipment used for commercial or rental purposes.

LIMITED WARRANTY ON BATTERY

For ninety (90) days from date of purchase, if any battery included with this riding equipment proves defective in material or workmanship and our testing determines the battery will not hold a charge, Sears will replace the battery at no charge. During the first 30 days of purchase, there will be no charges to replace the battery at your HOME. After the first 30 days, for your convenience, IN-HOME warranty service will still be available but a trip charge will apply. This charge will be waived if the Craftsman product is dropped off at an authorized Sears location. For the nearest authorized Sears location, please call 1-800-4-MY-HOME®.

This battery warranty applies only while this product is within the United States.

This warranty gives you specific legal rights, and you may also have other rights, which vary, from state to state.

Sears Brands Management Corporation, Dept.817WA, Hoffman Estates, IL 60179

