

**REPAIR PARTS MANUAL**  
**MODEL NO. 990030**  
**Lawn Tractor**

---

**CRAFTSMAN®**

# HOW TO USE THIS MANUAL

This manual is designed to provide the customer with a means to identify the parts on his/her tractor when ordering repair parts. The illustrations may or may not represent the actual assemblies; therefore, it is not recommended to use this manual as a guide to assemble or disassemble the tractor. Some hardware and parts are drawn larger in order to more readily identify them.

Each tractor has its own model number.

The model number for your tractor can be found on the fender under the seat.

When ordering parts, always give the following information:

- Product - "Tractor"
- Model Number - "990030"
- Part Number
- Part Description

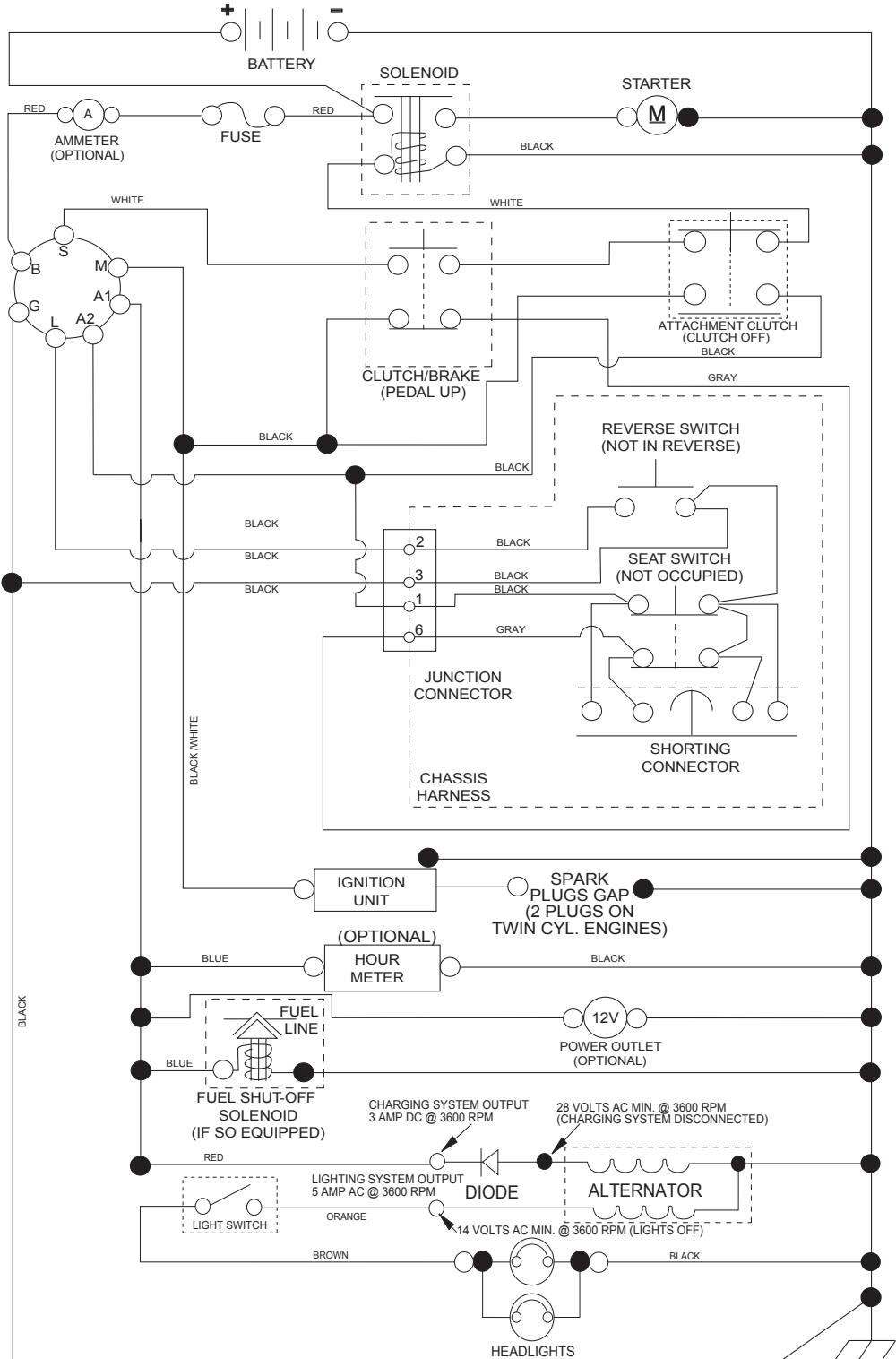
## TABLE OF CONTENTS

<b>SCHEMATIC .....</b>	<b>3</b>
<b>ELECTRICAL.....</b>	<b>4-5</b>
<b>CHASSIS .....</b>	<b>6-7</b>
<b>DRIVE.....</b>	<b>8-9</b>
<b>ENGINE.....</b>	<b>10-11</b>
<b>STEERING .....</b>	<b>12-13</b>
<b>MOWER DECK .....</b>	<b>14-15</b>
<b>MOWER LIFT.....</b>	<b>16</b>
<b>SEAT .....</b>	<b>17</b>
<b>DECALS.....</b>	<b>18</b>
<b>TRANSAXLE BREAKDOWN .....</b>	<b>20-21</b>
<b>ENGINE BREAKDOWN.....</b>	<b>22-27</b>
<b>WARRANTY.....</b>	<b>BACK COVER</b>

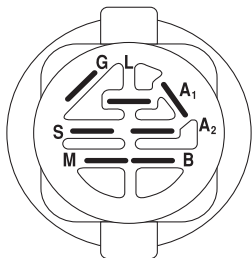
# TRACTOR- -MODEL NO. 917.990030

## SCHEMATIC

SCH11

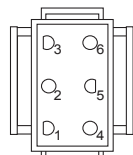


**NOTE**  
 YOUR TRACTOR IS EQUIPPED WITH A SPECIAL ALTERNATOR SYSTEM. THE LIGHTS ARE NOT CONNECTED TO THE BATTERY, BUT HAVE THEIR OWN ELECTRICAL SOURCE. BECAUSE OF THIS, THE BRIGHTNESS OF THE LIGHTS WILL CHANGE WITH ENGINE SPEED. AT IDLE THE LIGHTS WILL DIM. AS THE ENGINE IS SPEEDED UP, THE LIGHTS WILL BECOME THEIR BRIGHTEST.

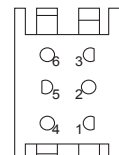


IGNITION SWITCH

POSITION	CIRCUIT	"MAKE"
OFF	M+G+A1	
RUN/OVERRIDE	B+A1	
RUN	B+A1	L+A2
START	B + S + A1	



CHASSIS HARNESS CONNECTOR (MATING SIDE)



DASH HARNESS CONNECTOR (MATING SIDE)

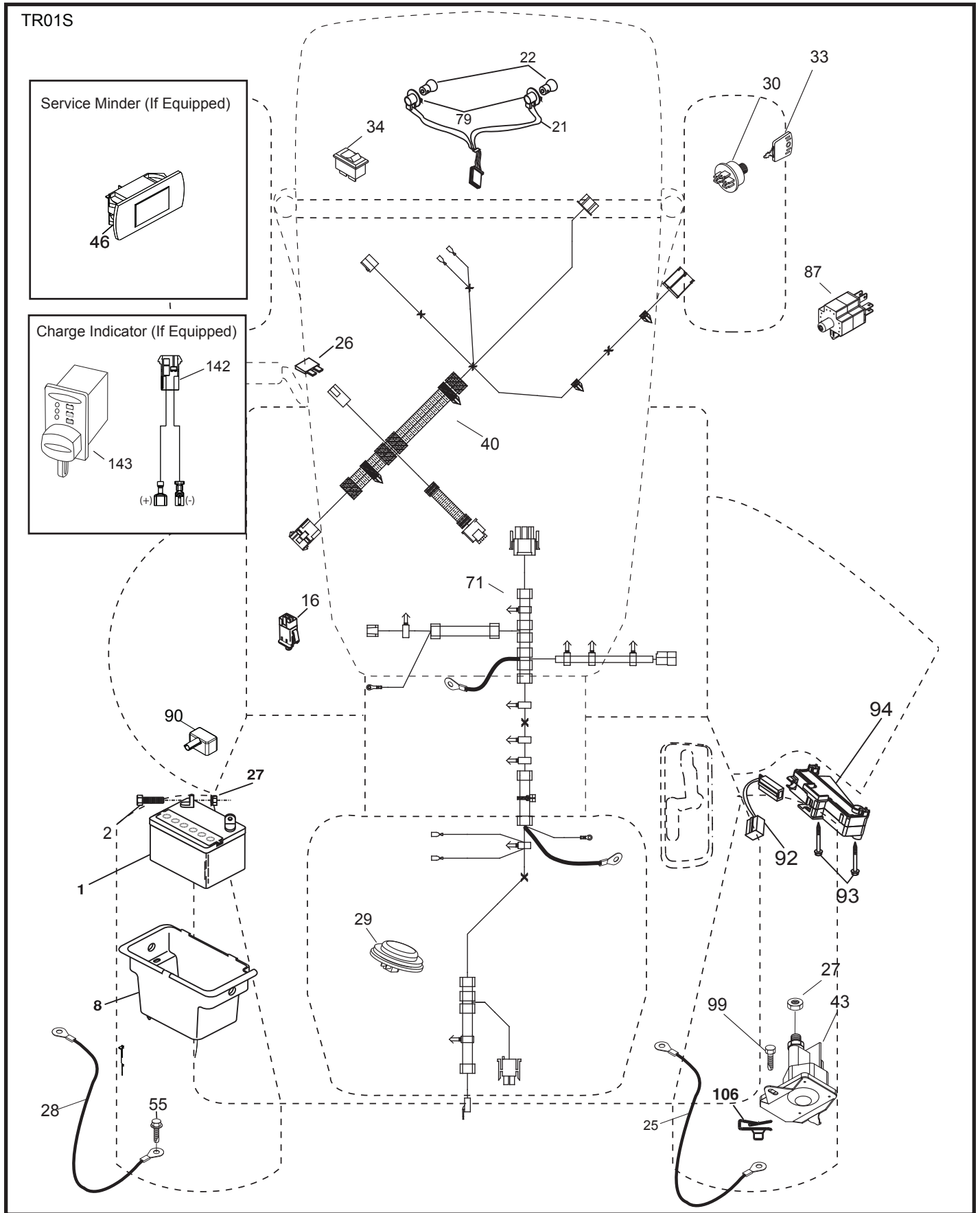
WIRING INSULATED CLIPS  
 NOTE: IF WIRING INSULATED CLIPS WERE REMOVED FOR SERVICING OF UNIT, THEY SHOULD BE RE-INSTALLED TO PROPERLY SECURE YOUR WIRING.

NON-REMOVABLE CONNECTIONS

REMOVABLE CONNECTIONS

# TRACTOR- -MODEL NO. 917.990030

## ELECTRICAL



# TRACTOR- -MODEL NO. 917.990030

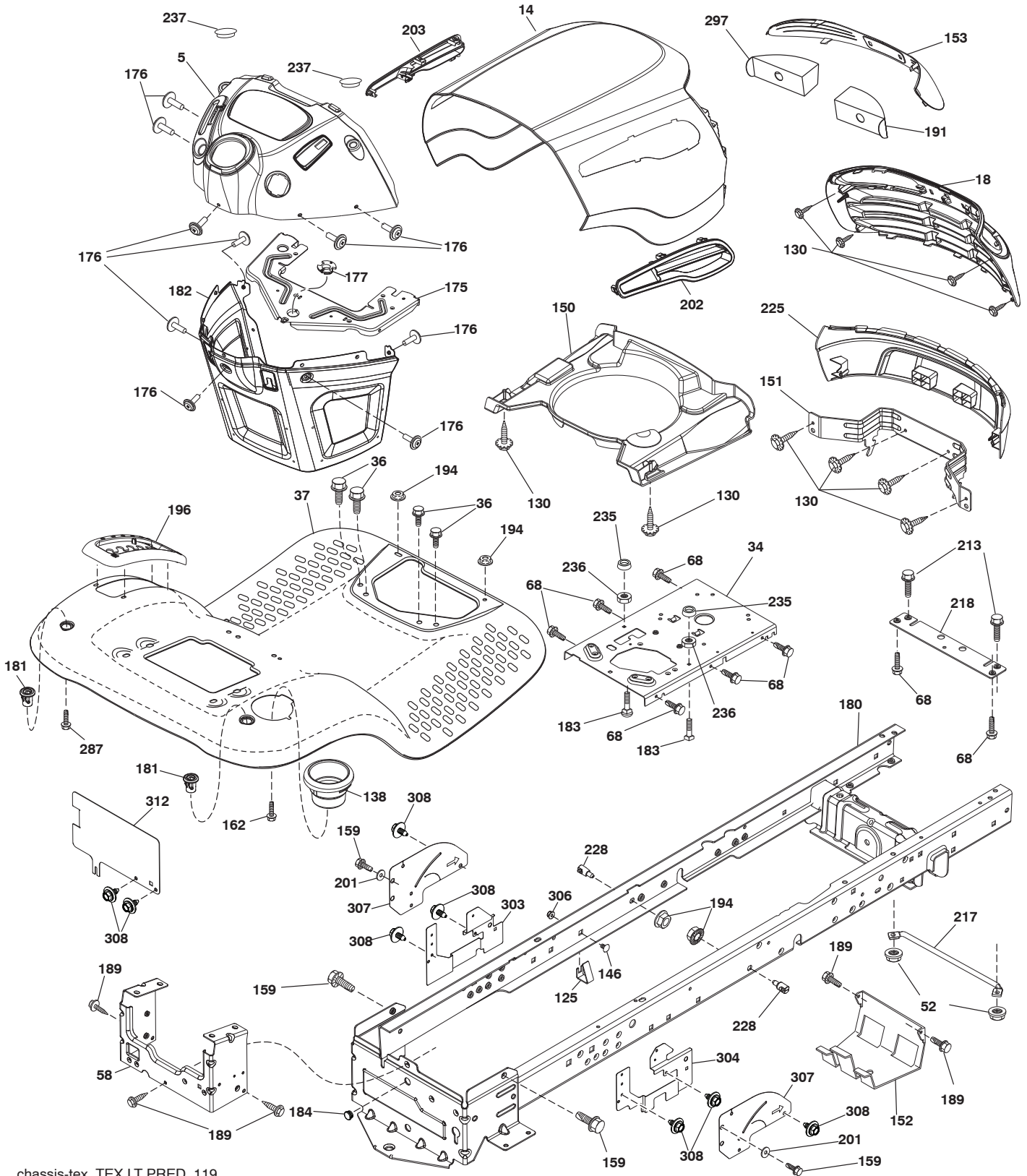
## ELECTRICAL

KEY NO.	PART NO.	DESCRIPTION
1	163465	Battery
2	74760412	Bolt Hex Hd 1/4-20 unc x 3/4
8	193228	Box Battery
16	176138	Switch Interlock Push-In
21	400252	Harness Socket Light w/4152J
22	4152J	Bulb Light
25	581498001	Cable Starter
26	175158	Fuse
27	73510400	Nut Keps Hex 1/4-20 unc
28	421686	Cable, Ground
29	401545	Switch, Seat
30	193350	Switch, Ign
33	411934	Key/Chain
34	110712X	Switch Light / Reset
40	581023101	Harness Ign. Dash (if equipped with rear solenoid)
--	401098	Harness Ign. Dash (if equipped with front solenoid)
43	192507	Solenoid
55	17060512	Screw Thdrol 5/16-18 x 3/4 TYTT
71	501133701	Harness Chassis RRBatt RDXSTR (if equipped with rear solenoid)
--	400449	Harness Ign. Chassis (if equipped with front solenoid)
79	175242	Bulbholder Asm. Incandescent
87	197802	Switch Interlock Clutch Cable
90	435395	Cover Terminal Battery
92	196615	Harness Pigtail Reverse Switch
93	192540	Screw Plastite 10 - 14 x 2 00
94	191834	Module Reverse Ros
99	17670412	Screw
106	174814	Pal Nut

**NOTE:** All component dimensions given in U.S. inches.  
1 inch = 25.4 mm.

# TRACTOR- -MODEL NO. 917.990030

## CHASSIS AND ENCLOSURES



chassis-tex\_TEX LT PRED\_119

# TRACTOR- -MODEL NO. 917.990030

## CHASSIS AND ENCLOSURES

KEY NO.	PART NO.	DESCRIPTION
5	408874X428	Dash
14	198416X615	Hood
18	580427601	Grille
34	580910801	Plate Engine
36	17060512	Screw 5/16-18 x 3/4
37	414872X615	Fender
52	73680500	Nut Crown Lock 5/16-18
58	412280	Drawbar Upper
68	17490508	Screw Thdrol 5/16-18 x 1/2
125	581684801	Clip Fuel Line
130	416358	Screw #10 x 0.750
138	193224X428	Cupholder
146	581857901	Bolt
150	400267	Duct Heat Hood
151	187568	Bracket Pivot
152	199535	Shield Browning/Debris
153	400550X599	Lens
159	17000612	Screw Hexwsh Thdrol 3/8-16 x 3/4
162	142432	Screw Hex Wsh Hi-Lo 1/4 x 1/2
175	199472	Crossmember
176	400776	Screw 10-24 x 5/8 Wshd Qdrx
177	195228	Bushing Steering
180	415063	Chassis
181	193102X428	Bushing Mtg. Fender Crgo.
182	407176	Dash Lower
183	74520520	Bolt Full Thd 5/16-18 x 1-1/4
184	587554101	Plug
189	17000512	Screw 5/16-18 x 3/4
191	416502	Insert Reflective RH
194	73900500	Nut Lock Hex Flange 5/16-18
196	414579	Console Asm. Deck Lift
201	19132016	Washer
202	579821601	Vent Hood Side Panel RH
203	579821602	Vent Hood Side Panel LH
213	74760512	Bolt Hex Hd 5/16-18 x 3/4
217	409167	Rod Pivot Hood
218	196395	X-Piece Hood Stop
225	400549X615	Bumper
228	195161	Stud Fastener
235	406129	Spacer Fender
236	73930500	Nut Center Lock 5/16-18
237	403704	Plug Mount Cargo
287	17600406	Screw 1/4-20 x 3/8
297	401827	Insert Reflective LH
303	587493402	Shield, Lower LH
304	587865102	Shield RH
306	73900600	Nut Lock
307	587494601	Shield, Upper
308	171877	Bolt, 5/16-18 unc x 3/4
312	587493002	Shield, Drawbar

**NOTE:** All component dimensions given in U.S. inches.  
1 inch = 25.4 mm.





# TRACTOR- -MODEL NO. 917.990030

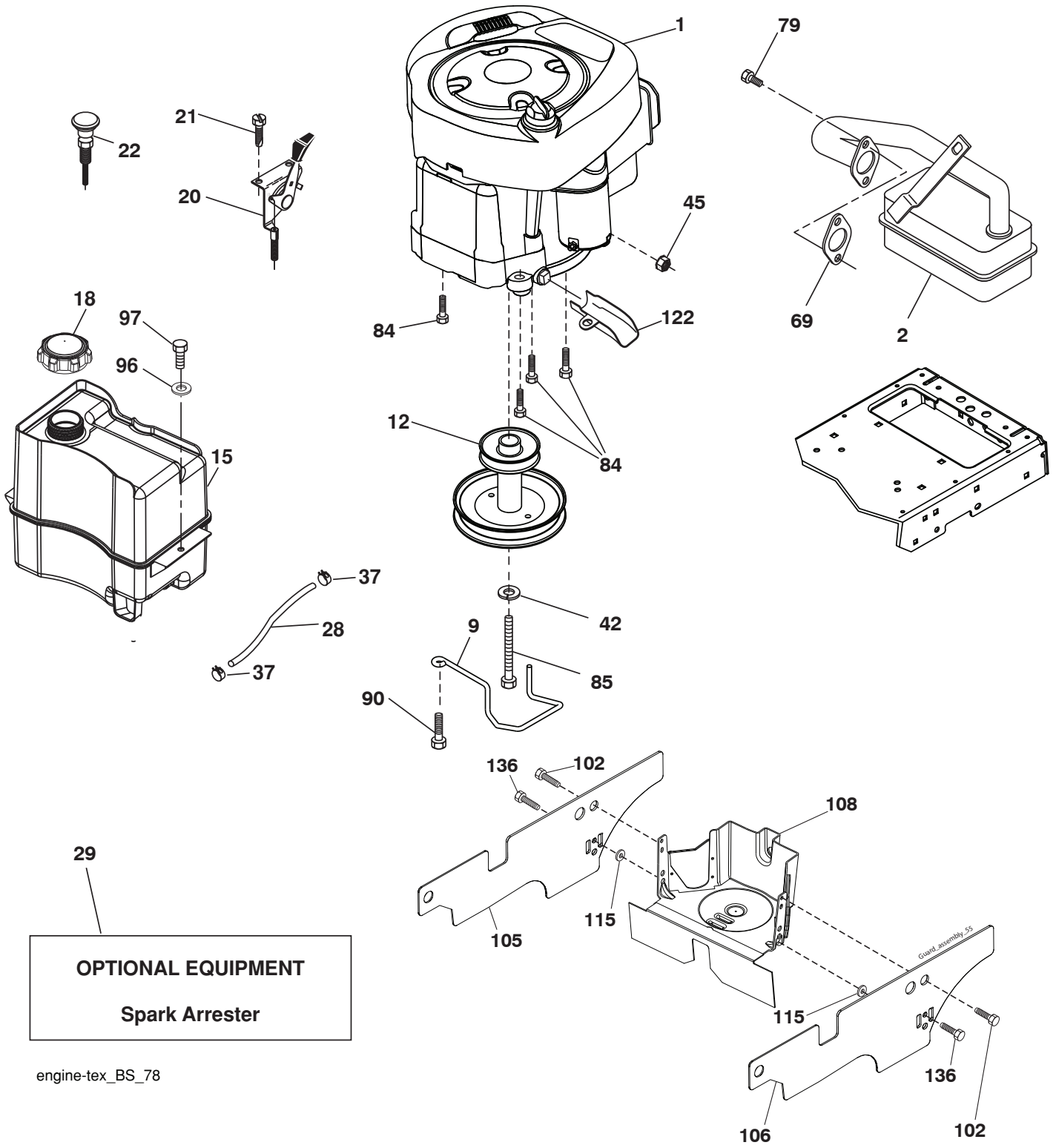
## DRIVE

KEY NO.	PART NO.	DESCRIPTION	KEY NO.	PART NO.	DESCRIPTION
1	-----	Transaxle, T2-CDBE-5X1A-18C1 (581115602) (See transaxle Breakdown.)	160	169484	Retainer Clip
2	123583X	Key Square	161	105709X	Spring, Return, Clutch
15	19131316	Washer 13/32 x 13/16 x 16 Ga.	166	429164	Nut Push .625
17	197296	Spring, Brake	167	405257	Latch Brake Parking
22	197660	Rod Shift	170	413430	Keeper Belt Centerspan
23	106933X	Knob	174	197289	Nut Push
29	581506401	Rod, Brake	175	408539	Shaft Asm Shift
33	12000001	Ring E	176	196214	Arm Clevis Rod Shift
35	401031	Rod, Brake, Park	178	197456	Spring Shift
37	121749X	Washer 25/32 x 1-1/4 x 16	183	156972	Spacer Axle
42	8883R	Cover, Foot Pedal	184	199996X428	Handle Parking Brake
49	72110614	Bolt	185	72110622	Bolt
50	194327	Pulley Idler Flat	186	194321	Spacer Retainer
51	73900600	Lock Nut 3/8-16	187	19133210	Washer
52	194326	Idler V-Groove	188	582217001	Link Clutch Ground Drive, Long
56	581270501	V-Belt, Drive	189	194317	Bellcrank Ground Drive
64	196200	Shaft Asm. Pedal Brake Control	190	194318	Keeper Bellcrank Ground Drive
70	193220x428	Console	205	121748X	Washer 25/32 x 1-5/8 x 16 Ga.
73	74490544	Bolt Hex 5/16-18 x 2-1/2 G5	211	196212	Bushing Shaft
74	142432	Screw 1/4 x 1/2	216	196131	Bracket Pulley Idler
80	581550701	Strap Torque	221	403187	Retainer Spring Clip Handle
99	408418	Rod Spring Bypass	231	407287	Idler V-Groove
114	73800500	Nut Lock	232	74780716	Bolt 7/16-14 x 1 Gr 5
116	73900500	Nut Lock Hex Flange 5/16-18	233	405296	Washer Serrated
121	175611	Bracket Strap Torque	263	17000612	Screw 3/8-16 x 3/4
122	72010520	Bolt 5/16-18 x 2.50	268	182402	Guard Muffler
125	17000512	Screw 5/16-18 x 3/4	279	424155	Link Shift
143	17490508	Screw THDROL 5/16-18			
153	4497H	Retainer Spring 1"			
159	76020412	Pin Cotter 1/8 x 3/4			

**NOTE:** All component dimensions given in U.S. inches  
1 inch = 25.4 mm

# TRACTOR- -MODEL NO. 917.990030

## ENGINE



engine-tex\_BS\_78

# TRACTOR- -MODEL NO. 917.990030

## ENGINE

KEY NO.	PART NO.	DESCRIPTION
1	— — — —	Engine B&S Model No. 31R777-0046-B1 (590440601) (See engine Breakdown.)
2	137352	Muffler
9	584908001	Keeper Belt Engine
12	586478501	Pulley Engine
15	581289901	Tank Fuel 1.50
18	430220	Cap Asm
20	176636X428	Control Throttle
21	416358	Screw #10 x 0.750
22	187771X428	Control Choke
28	137040	Fuel Line
29	137180	Spark Arrester Kit
37	123487X	Clamp Hose
42	10040700	Washer Lock 7/16
45	73510400	Nut Keps Hex 1/4-20 unc
69	165291	Gasket
79	192334	Screw Socket Hd 5/16-18 x .75
84	17060620	Screw 3/8-16 x 1-1/4
85	173937	Bolt Hex 7/16-20 x 4 x Gr. 5-1.5
90	17000616	Screw 3/8-16 x 1.0
96	19091416	Washer 9/32 x 7/8 x 16 Ga.
97	17670412	Screw 1/4-20 x 3/4
102	17000512	Screw 5/16-18 x 3/4
105	501267202	Shield, Side LH
106	501268202	Shield, Side RH
108	587179501	Cover Eng. Pulley w/SHLD 38", 42"
115	431761	Palnut #10
122	421922	Extension Drain Oil
136	421756	Screw, #10 0.500, BOS

**NOTE:** All component dimensions given in U.S. inches  
1 inch = 25.4 mm

### Engine Power Rating Information

The gross power rating for individual gas engine models is labeled in accordance with SAE (Society of Automotive Engineers) code J1940 (Small Engine Power & Torque Rating Procedure), and rating performance has been obtained and corrected in accordance with SAE J1995 (Revision 2002-05). Torque values are derived at 3060 RPM; horsepower values are derived at 3600 RPM. Actual gross engine power will be lower and is affected by, among other things, ambient operating conditions and engine-to-engine variability. Given both the wide array of products on which engines are placed and the variety of environmental issues applicable to operating the equipment, the gas engine will not develop the rated gross power when used in a given piece of power equipment (actual "on-site" or net power). This difference is due to a variety of factors including, but not limited to, accessories (air cleaner, exhaust, charging, cooling, carburetor, fuel pump, etc.), application limitations, ambient operating conditions (temperature, humidity, altitude), and engine-to-engine variability. Due to manufacturing and capacity limitations, Briggs & Stratton may substitute an engine of higher rated power for this Series engine.



# TRACTOR- -MODEL NO. 917.990030

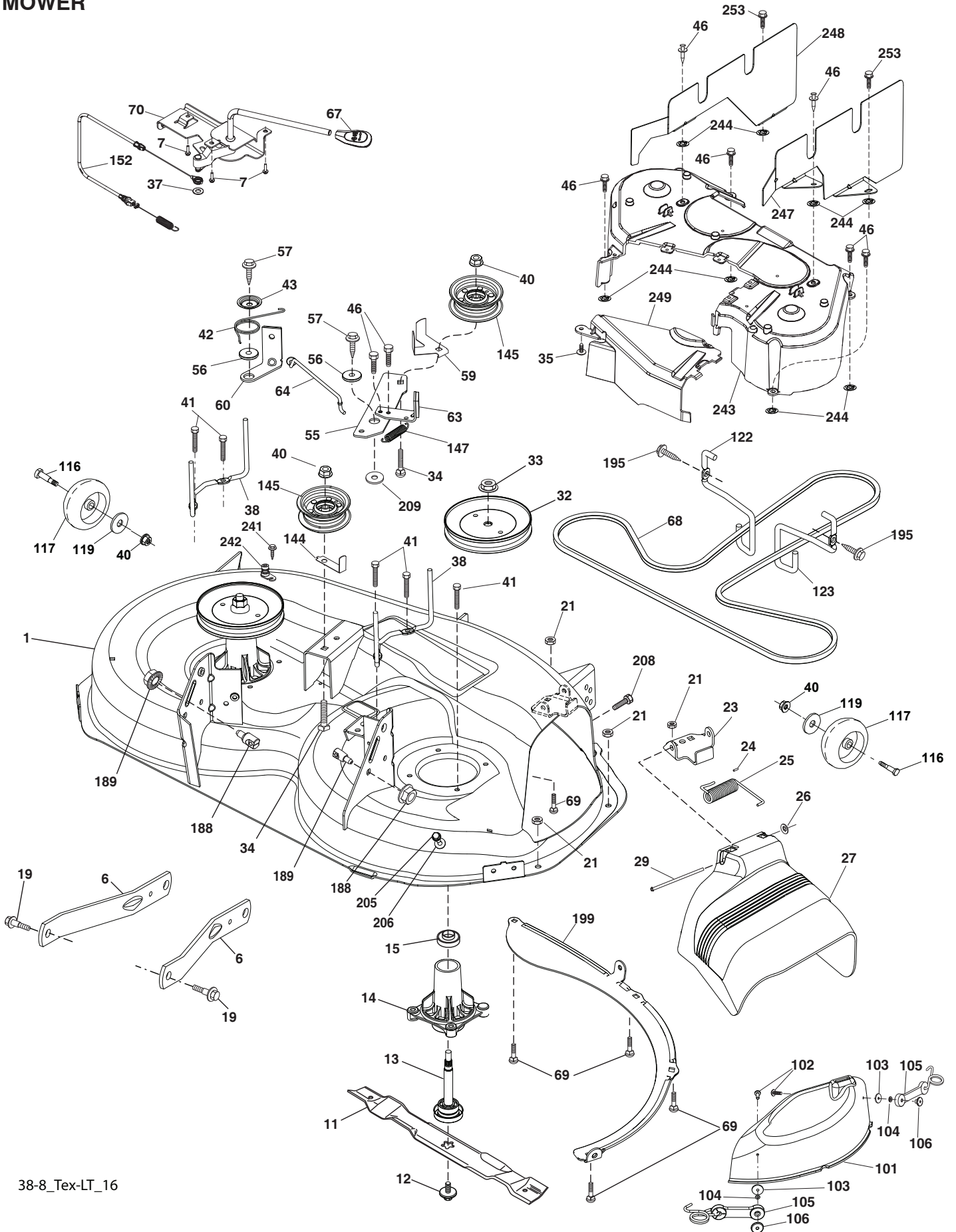
## STEERING ASSEMBLY

KEY NO.	PART NO.	DESCRIPTION
1	414803X428	Wheel, Steering
2	418168	Axle Asm., Front
4	403087	Spindle Asm., LH
5	403088	Spindle Asm., RH
6	6266H	Washer Thrust 0.75 x 1.23
7	121748X	Washer 25/32 x 1-5/8 x 16 Ga.
8	12000029	Ring, Clip #T5304-75
9	121232X	Cap, Spindle
13	121749X	Washer 25/32 x 1-1/4 x 16 Ga.
14	10040600	Washer Lock 3/8
15	73540600	Nut, Crown Lock 3/8-24 unf
16	585869202	Shaft Steering
19	194729	Plate Steering
20	400803X428	Boot, Steering
21	186737	Adapter, Wheel Steering
22	585029802	Bearing, Shaft
26	414852X428	Insert, Wheel Steering
27	19211616	Washer 21/32 x 1 x 16 Ga.
28	17000612	Screw 3/8-16 x 3/4
33	10040500	Washer Lock 5/16
35	194732	Gear, Sector Plate
45	19113812	Washer 11/32 x 2-3/8 x 12 Ga.
53	188967	Washer Hardened .793 x 1.637 x .060
57	407465	Bracket Upstop
58	194747	Bolt Shoulder Sector Pivot CFM
59	194748	Washer Thrust Sector Steering
60	73971000	Nut Flange Lock 5/8-11
61	194740	Draglink, LH
62	194741	Draglink, RH
63	17000512	Screw 5/16-18 x 3/4
64	199849	Retainer Clip Spring Steering
66	71020748	Bolt Hex Fghd 7/16-14 x 3 Serr
67	194737	Bushing PM Front Axle
68	73900700	Nut Lock
69	199162	Washer 1.5 x .505 x .118
70	585338801	Bracket Deck Susp. Front
71	190752	Shaft Ext. Steering
72	428982	Bolt Fin Hex 5/16-18 x 4
74	3366R	Bearing
75	580683701	Pinion
76	580683601	Screw, Head, Sock
122	444962	Cap Gear Sector

**NOTE:** All component dimensions given in U.S. inches.  
1 inch = 25.4 mm.

# TRACTOR- -MODEL NO. 917.990030

## MOWER



38-8\_Tex-LT\_16

# TRACTOR- -MODEL NO. 917.990030

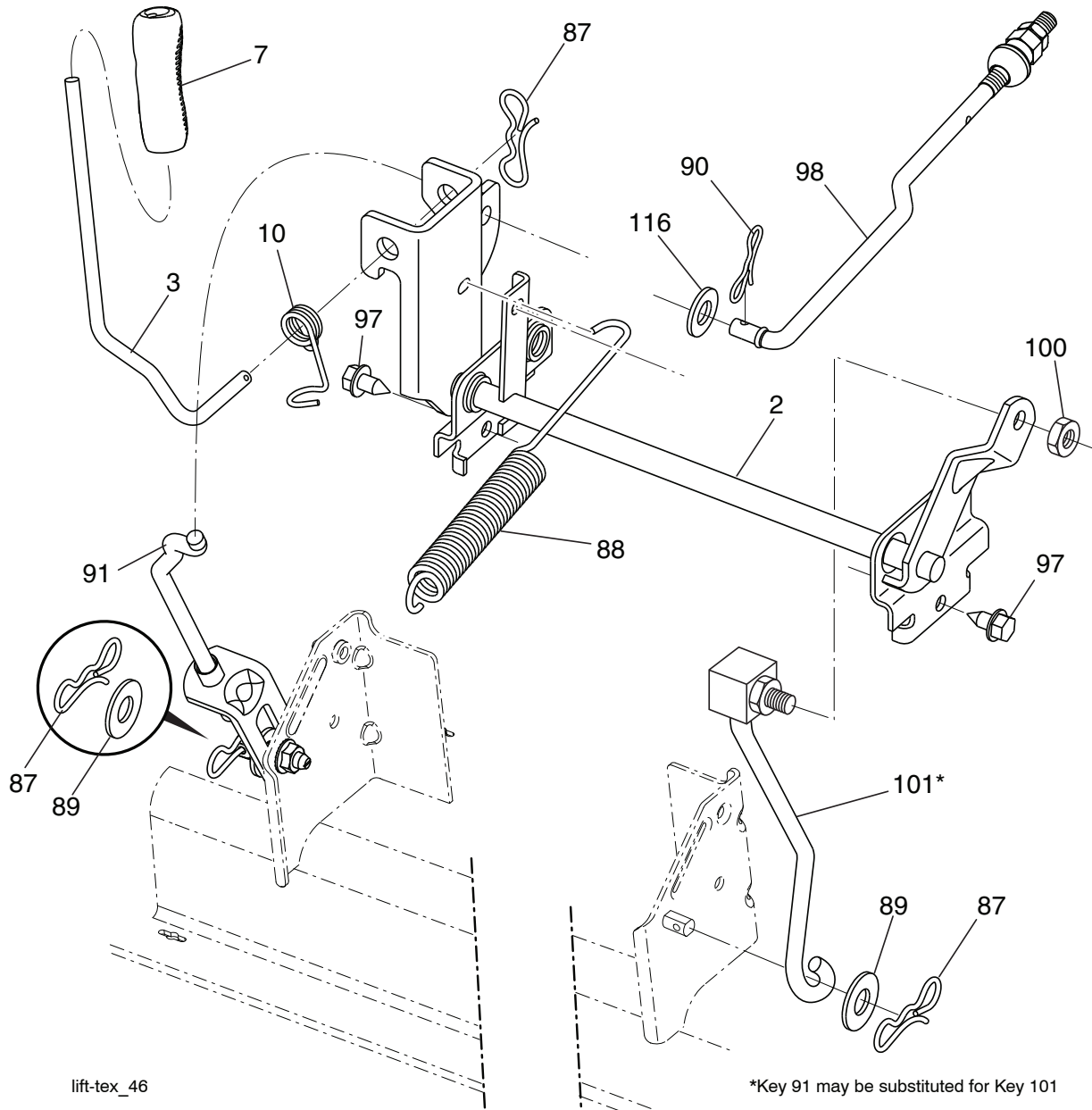
## MOWER

KEY NO.	PART NO.	DESCRIPTION	KEY NO.	PART NO.	DESCRIPTION
1	587771806	Mower Housing	104	10071000	Washer Lock #10
6	195186	Arm Suspension	105	160793	Latch Asm.
7	416358	Screw 10 x .750 BOS Thread	106	2029J	Nut Weld .327/304 #10 -24
11	581116301	Blade 2 in 1	116	4898H	Bolt
12	584309301	Screw 7/16 x 1 Hx	117	188606	Wheel Guage
13	587256501	Shaft Assembly, Mandrel	119	19121414	Washer
14	187281	Housing, Mandrel	122	197258	Keeper Belt Eng. LH
15	585323901	Bearing, Mandrel	123	197259	Keeper Belt Eng. RH
19	196539	Bolt, Shoulder	144	193414	Keeper Belt
21	73680500	Nut, Crownlock 5/16-18 unc	145	193197	Pulley, Idler, Flat
23	192557	Bracket, Deflector	147	401872	Spring Return
24	105304X	Cap, Sleeve	152	435111	Cable Clutch Manual w/Spr.
25	197026	Spring, Torsion, Deflector	188	195161	Stud Fastener
26	110452X	Nut, Push	189	73900500	Nut Lock Hex Flange
27	400809X428	Shield, Deflector	195	17000612	Screw Hexwsh Thdr 3/8-16 x 3/4
29	131491	Rod, Hinge	199	400095	Baffle, Vortex
32	199789	Pulley, Mandrel	205	19091416	Washer 9/32 x 7/8 x 16 Ga.
33	400234	Nut, Toplock, Flanged	206	17490416	Screw 1/4-20 x 1.00
34	72110612	Bolt Carr Sh. 3/8-16 x 1-1/2 Gr. 5	208	17670608	Screw Thdrol 3/8-16 x 1/2
35	133835	Fastener Christmas Tree	209	19133210	Washer 13/32 x 2 x 10 Ga.
37	19131316	Washer 13/32 x 13/16 x 16 Ga.	241	152927	Screw
38	199541	Keeper Belt LH Mandrel	242	415598	Port Washout
40	73900600	Nut, Lock Flg. 3/8-16 unc	243	406510	Cover Deck
41	584953901	Bolt Hex Wshrhd 3/8-16 x 1.19	244	423062	Palnut 1/4
42	198410	Spring Torsion Brake	247	430258	Shield Deck RH
43	197256	Spring Torsion Retainer	248	430259	Shield Deck LH
46	137729	Screw Thd Roll 1/4-20 x 5/8	249	406514	Cover Cable Clutch
55	197249	Arm, Idler	251	436087	Kit Strap Bungee
56	199092	Spacer, Retainer	253	427350	Rivet Tuflock .25 x .24
57	17000616	Screw Hexwsh Thd 3/8-16 x 1	--	587253301	Mandrel Assembly (Mandrel Assembly (Includes housing (#14), shaft assembly (#13), and bearing only (#15) - pulley/nut/washer and blade bolt/washers not included)
59	141043	Guard, Tuv Idler (94)			
60	199471	Arm Brake Mower			
63	199470	Arm Brake Mower			
64	199790	Linkage Brake			
67	198398X428	Handle, Clutch Cable	--	433741	Replacement Mower, Complete
68	408381	V-Belt			
69	72140505	Bolt Rdhd Sqnk 5/16-18 x 5/8			
70	401246	Clutch Asm. Manual			
101	192573	Cover Asm. Mulching 38"			
102	71081010	Screw Pan HD Phillips 10-24 x 5/8			
103	19061216	Washer #10			

**NOTE:** All component dimensions given in U.S. inches  
1 inch = 25.4 mm

# TRACTOR- -MODEL NO. 917.990030

## MOWER LIFT



KEY NO.	PART NO.	DESCRIPTION
2	422027	Shaft Asm., Lift
3	195231	Lever Asm., Lift RH
7	445060X428	Grip, Lever
10	196314	Spring Torsion
87	194209	Pin Cotter 7/16 Bow Tie Lock
88	410710	Spring Lift Assist
89	19191912	Washer Clear Zinc
90	194208	Pin Cotter 5/16 Bow Tie Lock
91	195181	Link Lift Susp Mower Rear

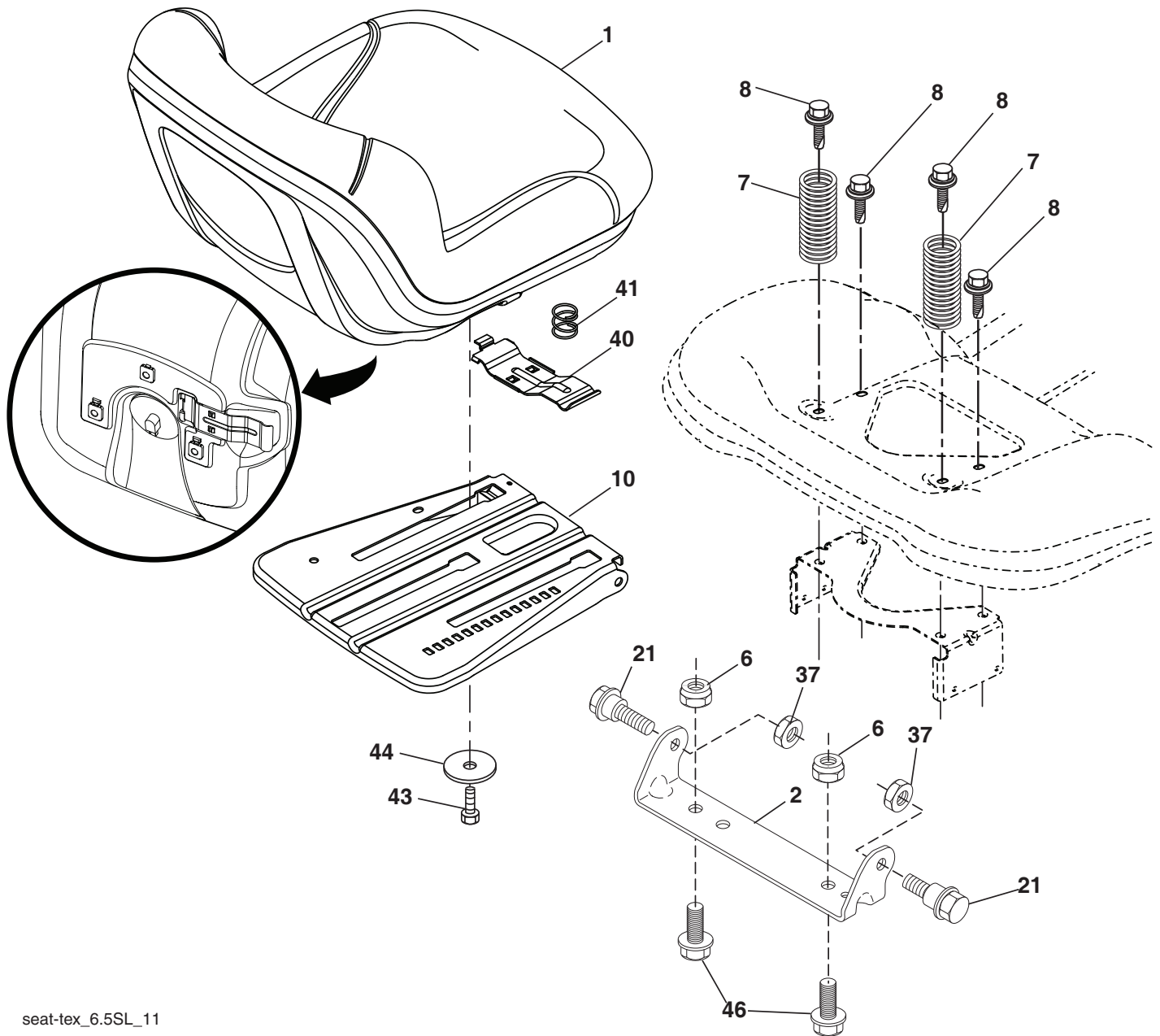
KEY NO.	PART NO.	DESCRIPTION
97	17000612	Screw 3/8-16 x .75
98	195270	Link Lift Susp. Front Mower
100	73930600	Nut Centerlock 3/8-16 unc
101	407003	Link Asm. Lift FXD
116	19151516	Washer 15/32 x 15/16 x 16 Ga.

**NOTE:** All component dimensions given in U.S. inches  
1 inch = 25.4 mm



# TRACTOR- -MODEL NO. 917.990030

## SEAT ASSEMBLY



seat-tex\_6.5SL\_11

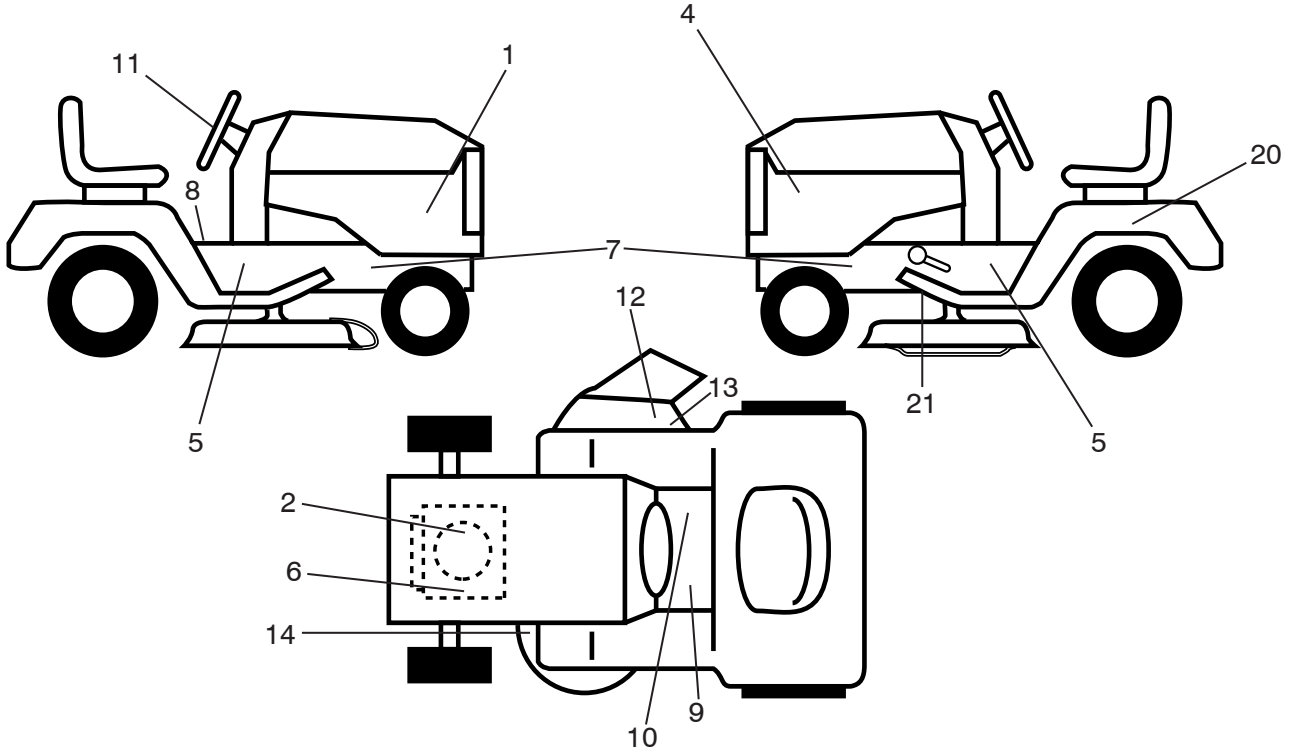
KEY NO.	PART NO.	DESCRIPTION
1	197520	Seat
2	180166	Bracket Pivot Fender
3	140675	Strap, Asm Fender
6	73800600	Nut, Lock w/Ins. 3/8-16 unc
7	587613301	Spring, Seat Cprsn
8	171877	Bolt 5/16-18 unc x 3/4 w/Sems
10	196977	Pan, Seat
21	587907801	Bolt, Shoulder 5/16-18 x 5/8
37	73800500	Nut, Lock 5/16-18 unc

KEY NO.	PART NO.	DESCRIPTION
40	197661	Handle Slide
41	198200	Spring Latch
43	74760612	Bolt 3/8-16 unc x 3/4
44	19133812	Washer 13/32 x 2 3/8 x 12 Ga.
46	588090401	Bolt 3/8-16 x 1, 1.25 OD

**NOTE:** All component dimensions given in U.S. inches.  
1 inch = 25.4 mm

# TRACTOR- -MODEL NO. 917.990030

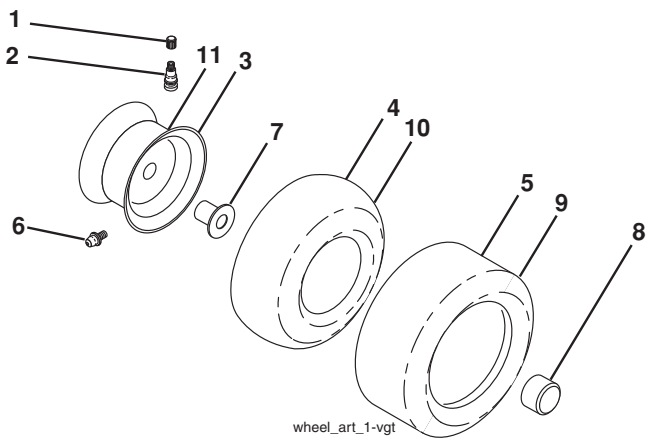
## DECALS



KEY NO.	PART NO.	DESCRIPTION
1	579779101	Decal Sideskirt RH
2	586373401	Decal Eng. H.P.
4	579779201	Decal Sideskirt LH
5	581579801	Decal Warning
6	581579701	Decal Warning Engine Symbols
7	581579601	Decal Chassis Hot Muffler
8	581578101	Decal Fender Warn
9	581724001	Decal Brake/Clutch Symbols
10	581578001	Decal Saddle Brake Parking
11	581894601	Decal Ins Strg Whl
12	584904601	Decal Deflect. Warning
13	581579201	Decal Deflect. Warn. Cutfngr. Sym.

KEY NO.	PART NO.	DESCRIPTION
14	581580003	Decal V-Belt Schematic
20	145005	Decal Bat Dan/Psn
21	421534	Decal V-Belt Sch.
--	581724601	Decal Drawbar Load Limit
--	581724801	Decal Bypass
--	193226X428	Pad Footrest LH
--	193227X428	Pad Footrest RH
--	115801440	Manual Operator's (Euro)
--	115801650	Manual Operator's (Scand)
--	115801520	Manual Operator's (Ebloc)
--	115801730	Manual Operator's (Baltic)
--	115801826	Manual Parts

## WHEELS & TIRES



KEY NO.	PART NO.	DESCRIPTION
1	59192	Cap Valve Tire
2	65139	Stem Valve
3	106732X613	Rim Asm 6" Front
4	59904	Tube Front (Service Item Only)
5	106222X	Tire Front 15 x 6-6
6	278H	Fitting Grease (Front Wheel Only)
7	9040H	Bearing Flange (Front Wheel Only)
8	104757X428	Cap Axle Blk 1 50 x 1 00
9	420531	Tire Rear 18 x 9.5-8
10	7152J	Tube Rear (Service Item Only)
11	106108X613	Rim Asm 8" Rear Service
--	144334	Sealant, Tire (10 oz. Tube)

**NOTE:** All component dimensions given in U.S. inches  
1 inch = 25.4 mm

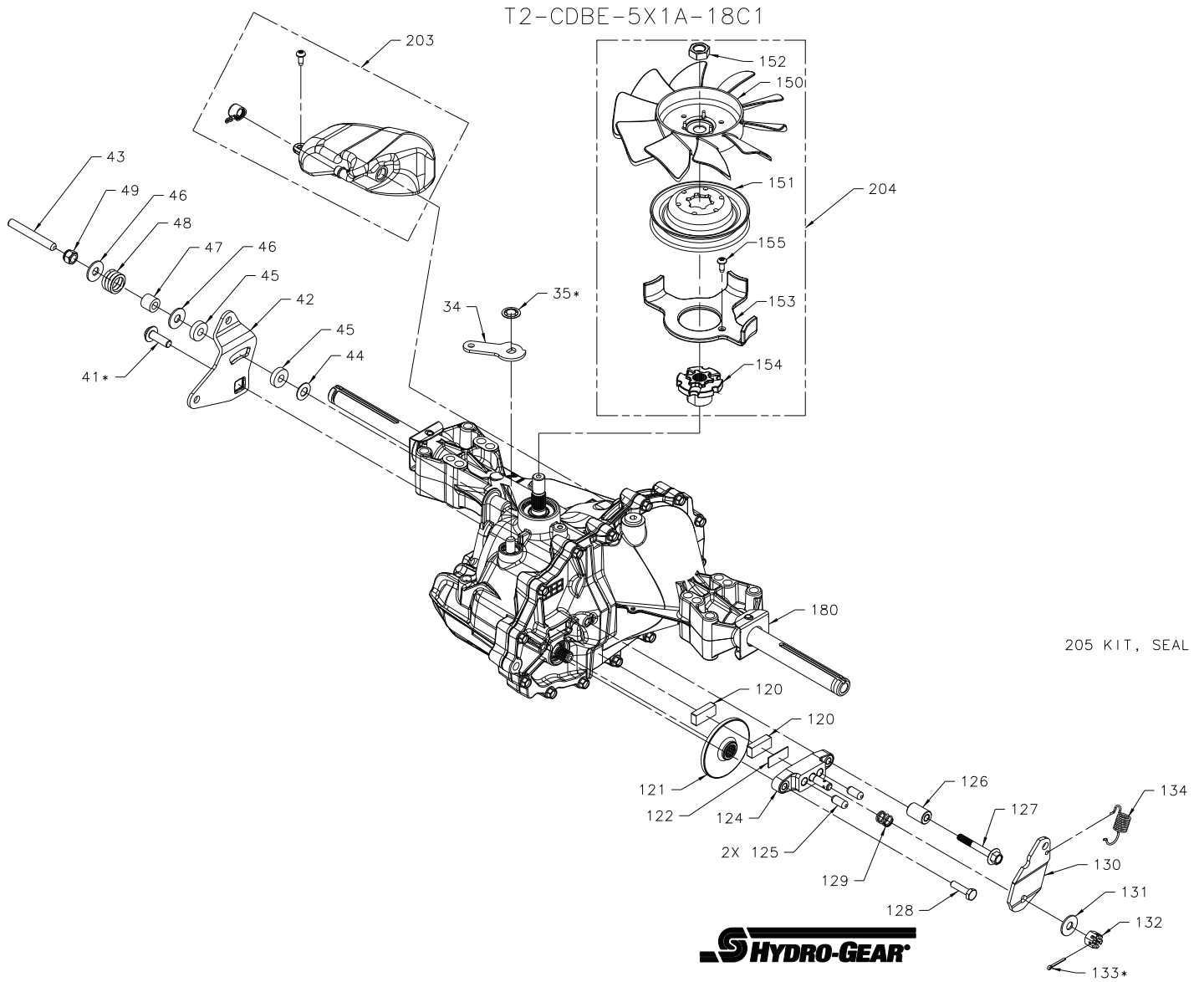
---

# SERVICE NOTES

---

# TRACTOR - - MODEL NUMBER 917.990030

## HYDRO GEAR - MODEL NUMBER T2-CDBE-5X1A-18C1



## TRACTOR - - MODEL NUMBER 917.990030

### HYDRO GEAR - MODEL NUMBER T2-CDBE-5X1A-18C1

KEY NO.	PART NO.	DESCRIPTION
34	584280701	Arm Bypass
35	584281001	Ring, Ret .375 Ext
41	584281201	Screw 5/16-18X1
42	584289801	Arm Control
43	584281301	Screw Set 5/16-24X2.50
44	584283301	Washer Belleville
45	584283101	Washer Plastic.32X.80X.21
46	584283001	Washer.34X.88X.06
47	584282801	Spacer .32X.59X.50
48	584282701	Spring Helical Comp
49	584289501	Nut,Hex 5/16-24 Nylon Insert
120	584282601	Puck.Brake
121	584282501	Rotor.Brake
122	584289601	Plate.Puck
124	584289701	Yoke.Brake
125	584287501	Pin.Brake.31X.73 Plated
126	584282401	Spacer.26X.57X.87
127	584281401	Screw 1/4-20X2.0 W/Patch
128	584281501	Screw 1/4-20X1 Patch
129	584282201	Spring, Comp Brake Anti Drag
130	584282301	Arm.Brake
131	584287401	Washer .34X.88X.06
132	584281701	Nut.Castle 5/16-24 Pl
133	584286601	Pin.Cotter 3/32X3/4
134	584281901	Spring Brake Arm Bias
150	584282001	Fan 7", 10 Blade
151	584286101	Pulley 4.0
152	584282101	Nut,Hex Ja 1/2-20 W Patch
153	587798401	Keeper, Belt
154	587798501	Hub, Pulley
155	587798701	Screw, Self-Tap 10-32 x .5 Patch
180	584281601	Spring,Clip Housing Thrust
203	587803701	Kit,E-Tank/Vented Cap
204	584285002	Kit,Fan & Pulley
205	584285001	Kit, Seal

**NOTE:** All component dimensions give in U.S. inches  
1 inch = 25.4 mm

# TRACTOR- -MODEL NO. 917.990030

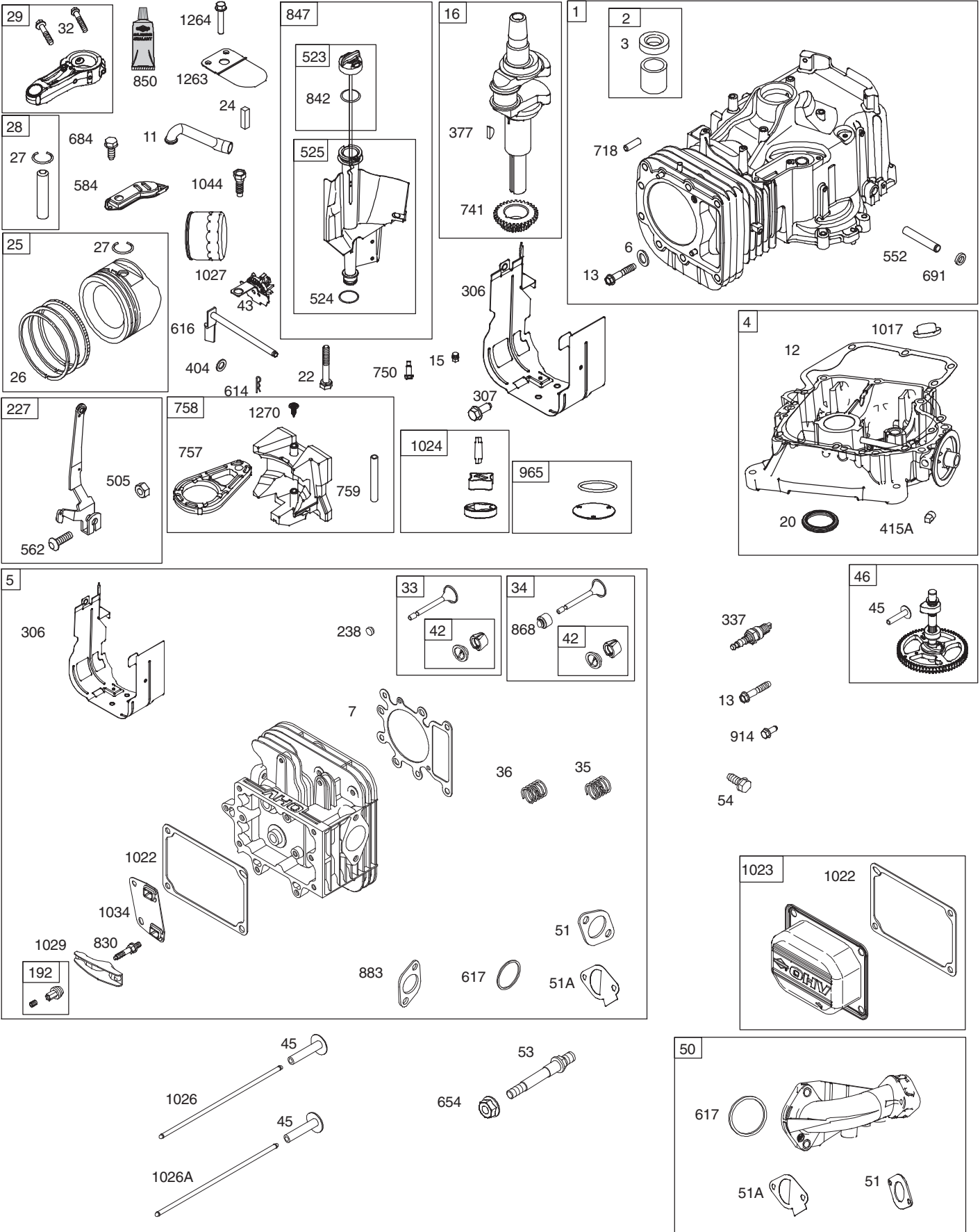
BRIGGS & STRATTON ENGINE - - MODEL NUMBER 31R777, TYPE NUMBER 0046-B1

48

1036

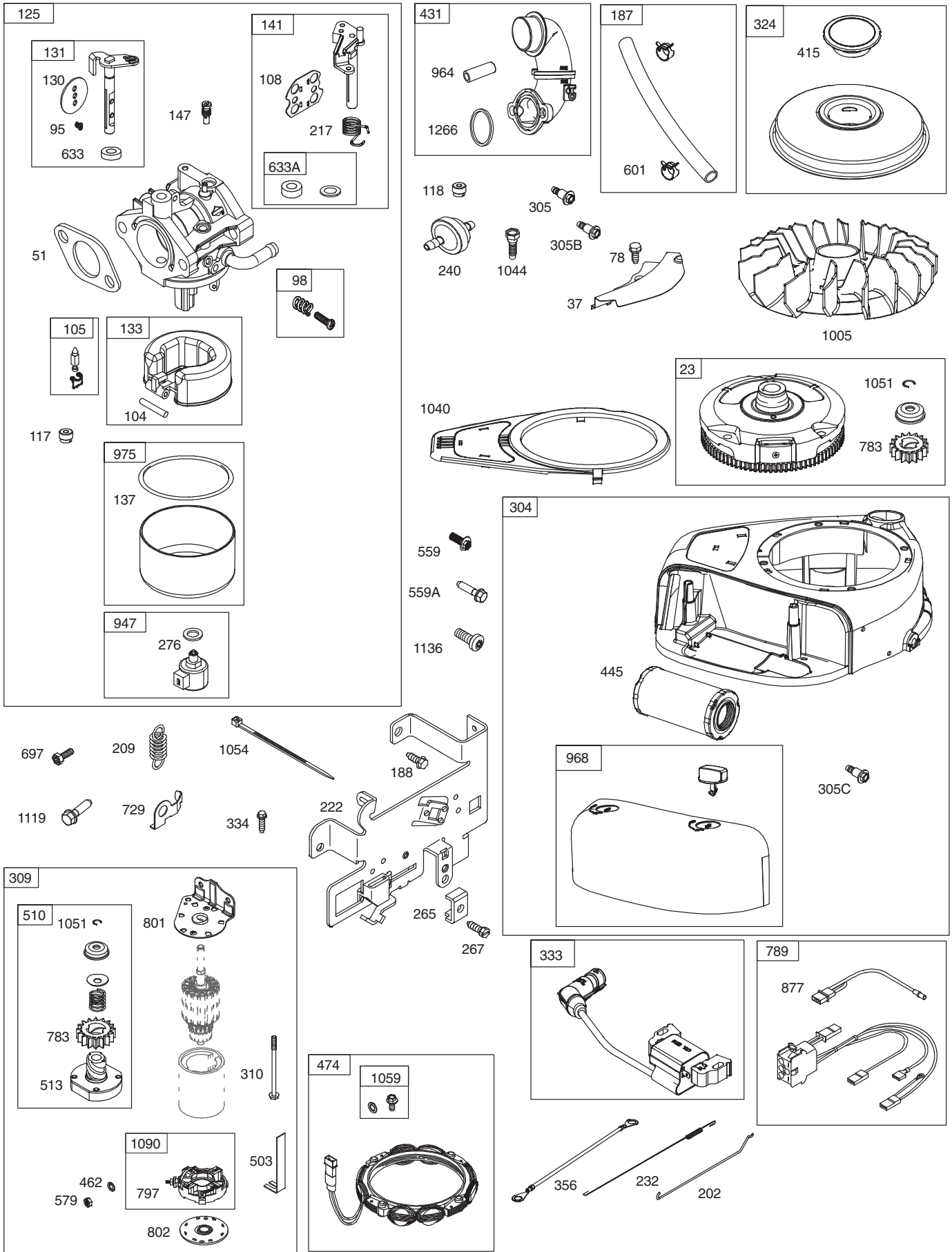
1329

1330

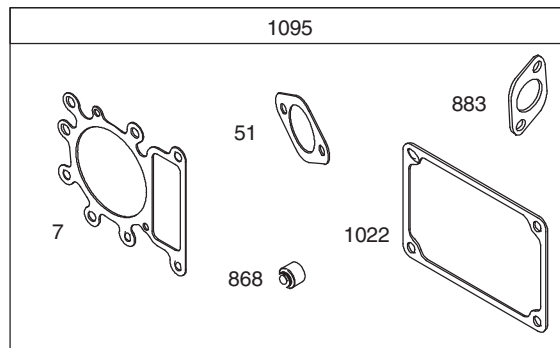
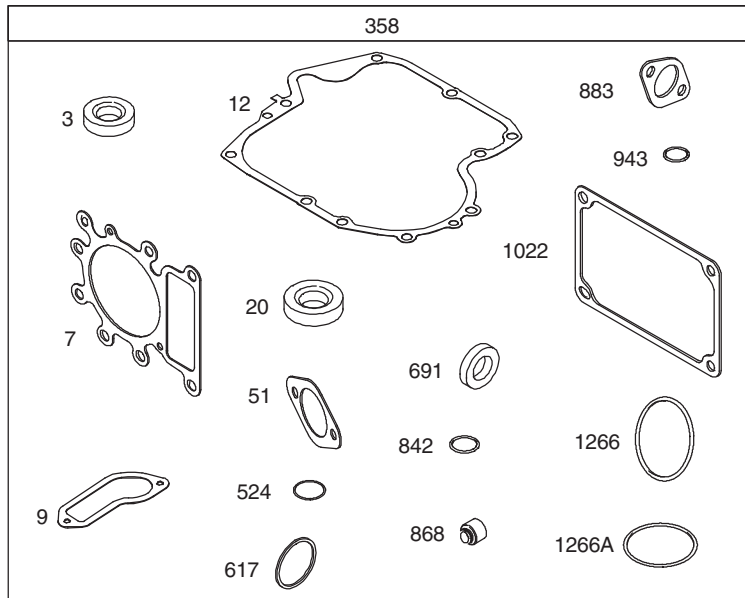
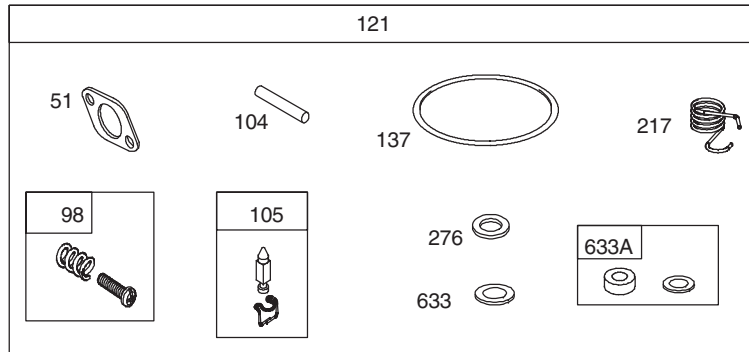


# TRACTOR- -MODEL NO. 917.990030

BRIGGS & STRATTON ENGINE - - MODEL NUMBER 31R777, TYPE NUMBER 0046-B1



**TRACTOR- -MODEL NO. 917.990030**  
**BRIGGS & STRATTON ENGINE - - MODEL NUMBER 31R777, TYPE NUMBER 0046-B1**





## TRACTOR- -MODEL NO. 917.990030

### BRIGGS & STRATTON ENGINE - - MODEL NUMBER 31R777, TYPE NUMBER 0046-B1

KEY NO.	PART NO.	DESCRIPTION	KEY NO.	PART NO.	DESCRIPTION
1	796010	Cylinder Assembly	54	691148	Screw (Intake Manifold)
2	797673	Bushing/Seal Kit (Magneto Side)	78	691693	Screw (Flywheel Guard)
3	391086s	Seal-Oil (Magneto Side)	95	593897	Screw (Throttle Valve)
4	592849	Sump-Engine	98	846817	Kit-Idle Speed
5	796026	Head-Cylinder	104	594860	Pin-Float Hinge
6	690310	Washer (Cylinder Head)	105	594868	Valve-Float Needle
7	796584	Gasket-Cylinder Head	108	594863	Valve-Choke
9	697109	Gasket-Breather	117	594869	Jet-Main (Standard)
11	794683	Tube-Breather	118	595070	Jet-Main (High Altitude) (5000 > 9000 Feet)
12	697110	Gasket-Crankcase			
13	592244	Screw (Cylinder Head)	121	594886	Kit-Carburetor Overhaul
15	690946	Plug-Oil Drain	125	594593	Carburetor (Ruixing)
16	591762	Crankshaft	130	594857	Valve-Throttle
20	795387	Seal-Oil (PTO Side)	131	594855	Kit-Throttle Shaft
22	692125	Screw (Crankcase Cover/Sump)	133	594859	Float-Carburetor
23	591759	Flywheel	137	594861	Gasket-Float Bowl
24	591757	Key-Flywheel (Steel)	141	594862	Kit-Choke Shaft
25	594435	Piston Assembly (Standard)	147	594870	Jet-Pilot
	594436	Piston Assembly (.020" Oversize)	187	791766	Line-Fuel (Cut to Required Length)
26	594437	Ring Set (Standard)	188	691693	Screw (Control Bracket)
	594438	Ring Set (.020" Oversize)	192	691986	Adjuster-Rocker Arm
27	698469	Lock-Piston Pin	202	691841	Link-Mechanical Governor
28	594439	Pin-Piston	209	796260	Spring-Governor (Green)
29	794122	Rod-Connecting	217	594864	Spring-Choke Return
32	791118	Screw (Connecting Rod)	222	694042	Bracket-Control
33	792868	Valve-Exhaust	227	691374	Lever-Governor Control
34	791935	Valve-Intake	232	691842	Spring-Governor Link
35	691279	Spring-Valve (Intake)	238	691843	Cap-Valve
36	691279	Spring-Valve (Exhaust)	240	394358s	Filter-Fuel
37	697352	Guard-Flywheel	265	691024	Clamp-Casing
42	499586	Keeper-Valve	267	794904	Screw (Casing Clamp)
43	691968	Slinger-Governor/Oil	276	846640	Washer-Sealing
45	690564	Tappet-Valve	304	591642	Blower Housing
46	793880	Gear-Cam	305	697102	Screw (Blower Housing)
48	N/A	Short Block (Not Available at This Printing)			(1/4-20x1.21)
			305B	795891	Screw (Blower Housing)
50	592842	Manifold-Intake			(#10-16x.43)
51	692137	Gasket-Intake	305C	799370	Screw (Blower Housing)
51A	796081	Gasket-Intake			(1/4-20x.90)
53	591260	Stud (Carburetor)	306	592777	Shield-Cylinder

## TRACTOR- -MODEL NO. 917.990030

### BRIGGS & STRATTON ENGINE - - MODEL NUMBER 31R777, TYPE NUMBER 0046-B1

KEY NO.	PART NO.	DESCRIPTION	KEY NO.	PART NO.	DESCRIPTION
307	691693	Screw (Cylinder Shield)	633A	594865	Seal-Choke/Throttle Shaft (Choke Shaft)
309	593934	Motor-Starter			
310	690323	Screw (Starter Motor)	654	690958	Nut (Carburetor) (Serrated)
324	593933	Screen/Cup Assembly	684	697157	Screw (Breather Assembly)
333	595304	Armature-Magneto	691	692407	Seal-Governor Shaft
334	691061	Screw (Magneto Armature)	697	791680	Screw (Drive Cap)
337	491055s	Plug-Spark	718	690959	Pin-Locating
356	697089	Wire-Stop	724	697478	Link-Starter Switch
358	796187	Gasket Set-Engine	729	691224	Clip-Wire
377	691639	Key-Woodruff	741	697128	Gear-Timing
404	691691	Washer (Governor Crank)	750	790832	Screw (Oil Pump Cover)
415	794129	Plug (Cover/Retainer)	757	793242	Link-Counterweight
415A	794903	Plug	758	594443	Counterweight
431	797901	Elbow-Intake	759	697392	Pin-Counterweight
445	591334	Filter-Air Cleaner Cartridge	783	593935	Gear-Pinion (Steel)
462	691261	Washer (Starter Cable)	789	698329	Harness-Wiring
474	592831	Alternator	797	693167	Nut (Brush Retainer)
503	691532	Strap-Starter	801	691283	Cap-Drive
505	691251	Nut (Governor Control Lever)	802	691286	Cap-End
510	693699	Drive-Starter	830	691095	Stud-Rocker Arm
513	692024	Clutch-Drive	842	691031	Seal-O Ring (Dipstick Tube)
523	699908	Dipstick	847	790442	Dipstick/Tube Assembly
524	691032	Seal-Dipstick Tube	850	100106	Sealant-Liquid
525	697184	Tube-Dipstick	868	690968	Seal-Valve
552	697144	Bushing-Governor Crank	877	790544	Wire/Connector-Alternator
559	693675	Screw (Remote Choke Stop) (6 Lobe)	883	692236	Gasket-Exhaust
			914	691108	Screw (Rocker Cover)
559A	697561	Screw (Remote Choke Stop) (#8-32x.37)	943	690589	Seal-O Ring (Oil Pump Cover)
			947	846639	Solenoid-Fuel
562	691119	Screw (Governor Control Lever)	964	799159	Cap-Connector
579	691029	Nut (Starter Cable)	965	499613	Cover-Oil Pump
584	794682	Cover-Breather Passage	968	591647	Cover-Air Cleaner
601	791850	Hose-Clamp (Green)	975	594867	Bowl-Fuel
614	691620	Pin-Cotter (Governor Crank)	1005	796083	Fan-Flywheel
616	692012	Crank-Governor	1017	796981	Screen-Oil Pump
617	692138	Seal-O Ring (Intake Manifold) (Red)	1022	272475s	Gasket-Rocker Cover
			1023	797421	Cover-Rocker
633	699813	Seal-Choke/Throttle Shaft (Throttle Shaft)	1024	794644	Pump-Oil
			1026	692003	Rod-Push (Intake) (Aluminum)

# TRACTOR- -MODEL NO. 917.990030

## BRIGGS & STRATTON ENGINE - - MODEL NUMBER 31R777, TYPE NUMBER 0046-B1

KEY NO.	PART NO.	DESCRIPTION
1026A	692011	Rod-Push (Exhaust) (Steel)
1027	492932s	Filter-Oil
1029	691751	Arm-Rocker
1034	690822	Guide-Push Rod
1036		Label-Emissions (Available From A Briggs & Stratton Authorized Dealer)
1040	699852	Plate-Trim
1044	698139	Screw (Flywheel)
1051	691265	Ring-Retaining
1054	280275	Tie-Cable
1058	276344	Operator's Manual
1059	698516	Kit-Screw/Washer (Alternator)
1090	691293	Retainer-Brush
1091	691333	Cap-Limiter
1095	794152	Gasket Set-Valve
1119	691183	Screw (Alternator)
1136	699891	Screw (High Speed Control)
1263	697124	Reed-Breather
1264	697104	Screw (Breather Reed)
1266	691917	Seal-O Ring (Intake Elbow) (Red)
1266A	697123	Seal-O Ring (Intake Elbow)
1270	793243	Plug-AVS Counterweight
1329	N/A	Replacement Engine (Not Available at This Printing)
1330	N/A	Repair Manual (Not Available at This Printing)

Carburetor Overhaul Kit	Key No. 121
Engine Gasket Set	Key No. 358
Valve Gasket Set	Key No. 1095

**NOTE:** All component dimensions given in U.S. inches  
1 inch = 25.4 mm

### **LIMITED WARRANTY ON CRAFTSMAN RIDING EQUIPMENT**

For two (2) years from the date of purchase, if this Craftsman Riding Equipment is maintained, lubricated and tuned up according to the instructions in the owner's manual, Sears will repair or replace free of charge any parts that are found to be defective in material or workmanship according to the guidelines of coverage listed below. Sears will also provide free labor for these applicable warranted parts for the two full years. During the first 30 days of purchase, there will be no charges to service the product at your home for issues covered by this warranty. (See exclusions below). For your convenience, IN HOME warranty service will still be available after the first 30 days of purchase, but a trip charge will apply. This charge will be waived if the Craftsman product is dropped off at an authorized Sears location. For the nearest authorized Sears location, please call 1-800-4-MY-HOME®. This warranty applies only while this product is within the United States.

This Warranty does not cover:

- Expendable items which become worn during normal use, including but not limited to blades, spark plugs, air cleaners, belts, and oil filters.
- Standard Maintenance Servicing, oil changes, or tune-ups
- Tire replacement or repair caused by punctures from outside objects, such as nails, thorns, stumps, or glass.
- Repairs necessary because of operator abuse, including but not limited to, damage caused by towing objects beyond the capability of the riding equipment, impacting objects that bend the frame or crankshaft, or over-speeding the engine.
- Repairs necessary because of operator negligence, including but not limited to, electrical and mechanical damage caused by improper storage, failure to use the proper grade and amount of engine oil, failure to keep the deck clear of flammable debris, or failure to maintain the equipment according to the instructions contained in the owner's manual.
- Engine (fuel system) cleaning or repairs caused by fuel determined to be contaminated or oxidized (stale). In general, fuel should be used within 30 days of its purchase date.
- Normal deterioration and wear of the exterior finishes, or product label replacement.
- Riding equipment used for commercial or rental purposes.

### **LIMITED WARRANTY ON BATTERY**

For ninety (90) days from date of purchase, if any battery included with this riding equipment proves defective in material or workmanship and our testing determines the battery will not hold a charge, Sears will replace the battery at no charge. During the first 30 days of purchase, there will be no charges to replace the battery at your HOME. After the first 30 days, for your convenience, IN-HOME warranty service will still be available but a trip charge will apply. This charge will be waived if the Craftsman product is dropped off at an authorized Sears location. For the nearest authorized Sears location, please call 1-800-4-MY-HOME®.

This battery warranty applies only while this product is within the United States.

This warranty gives you specific legal rights, and you may also have other rights, which vary, from state to state.

Sears Brands Management Corporation, Dept.817WA, Hoffman Estates, IL 60179

