

**REPAIR PARTS MANUAL**  
**MODEL NO. 990380**  
**Lawn Tractor**

---

**CRAFTSMAN<sup>®</sup>**

# HOW TO USE THIS MANUAL

This manual is designed to provide the customer with a means to identify the parts on his/her tractor when ordering repair parts. The illustrations may or may not represent the actual assemblies; therefore, it is not recommended to use this manual as a guide to assemble or disassemble the tractor. Some hardware and parts are drawn larger in order to more readily identify them.

Each tractor has its own model number.

The model number for your tractor can be found on the fender under the seat.

When ordering parts, always give the following information:

- Product - "Tractor"
- Model Number - "990380"
- Part Number
- Part Description

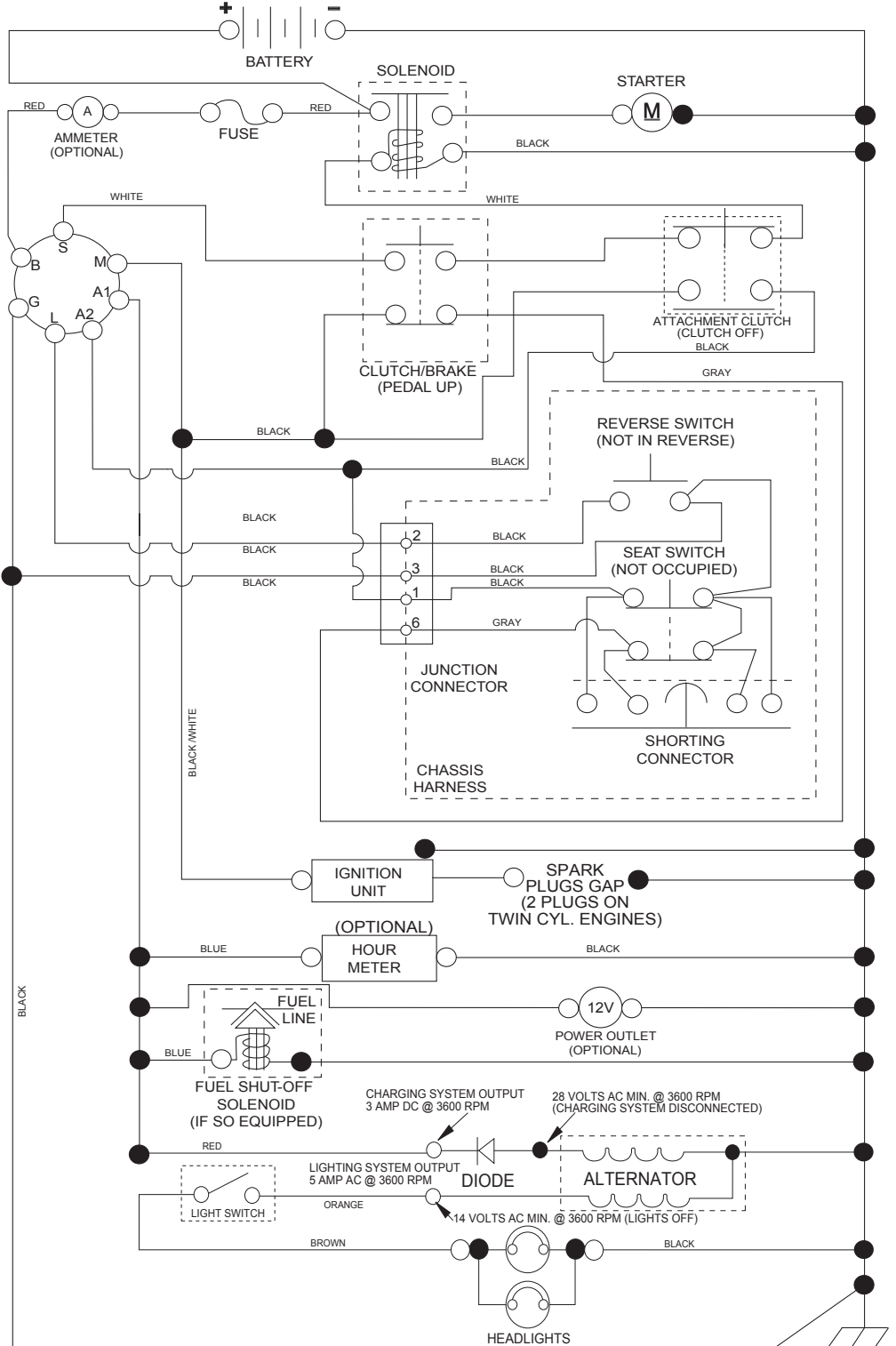
## TABLE OF CONTENTS

|                                  |                   |
|----------------------------------|-------------------|
| <b>SCHEMATIC .....</b>           | <b>3</b>          |
| <b>ELECTRICAL.....</b>           | <b>4-5</b>        |
| <b>CHASSIS .....</b>             | <b>6-7</b>        |
| <b>DRIVE.....</b>                | <b>8-9</b>        |
| <b>ENGINE.....</b>               | <b>10-11</b>      |
| <b>STEERING .....</b>            | <b>12-13</b>      |
| <b>MOWER DECK .....</b>          | <b>14-15</b>      |
| <b>MOWER LIFT.....</b>           | <b>16</b>         |
| <b>SEAT .....</b>                | <b>17</b>         |
| <b>DECALS.....</b>               | <b>18</b>         |
| <b>TRANSAXLE BREAKDOWN .....</b> | <b>20-21</b>      |
| <b>ENGINE BREAKDOWN.....</b>     | <b>22-25</b>      |
| <b>WARRANTY.....</b>             | <b>BACK COVER</b> |

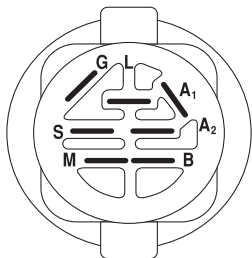
# TRACTOR- -MODEL NO. 917.990380

## SCHEMATIC

SCH11

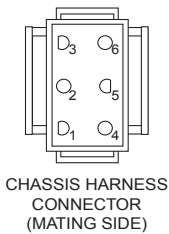


**NOTE**  
YOUR TRACTOR IS EQUIPPED WITH A SPECIAL ALTERNATOR SYSTEM. THE LIGHTS ARE NOT CONNECTED TO THE BATTERY, BUT HAVE THEIR OWN ELECTRICAL SOURCE. BECAUSE OF THIS, THE BRIGHTNESS OF THE LIGHTS WILL CHANGE WITH ENGINE SPEED. AT IDLE THE LIGHTS WILL DIM. AS THE ENGINE IS SPEEDED UP, THE LIGHTS WILL BECOME THEIR BRIGHTEST.

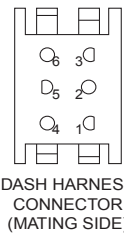


IGNITION SWITCH

| POSITION     | CIRCUIT    | "MAKE" |
|--------------|------------|--------|
| OFF          | M+G+A1     |        |
| RUN/OVERRIDE | B+A1       |        |
| RUN          | B+A1       | L+A2   |
| START        | B + S + A1 |        |

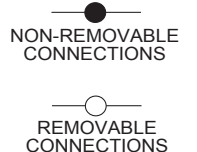


CHASSIS HARNESS CONNECTOR (MATING SIDE)



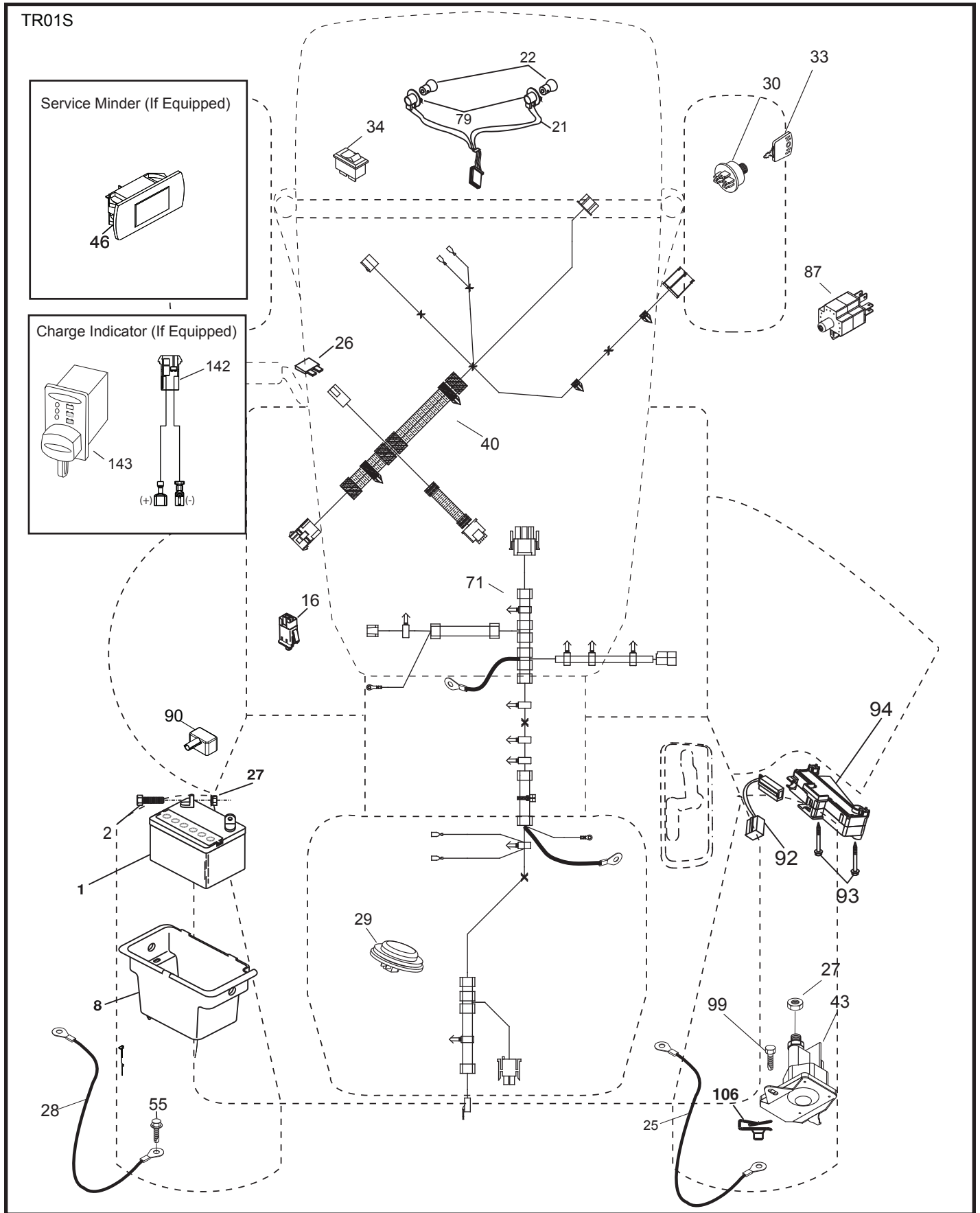
DASH HARNESS CONNECTOR (MATING SIDE)

WIRING INSULATED CLIPS  
NOTE: IF WIRING INSULATED CLIPS WERE REMOVED FOR SERVICING OF UNIT, THEY SHOULD BE RE-INSTALLED TO PROPERLY SECURE YOUR WIRING.



# TRACTOR- -MODEL NO. 917.990380

## ELECTRICAL



# TRACTOR- -MODEL NO. 917.990380

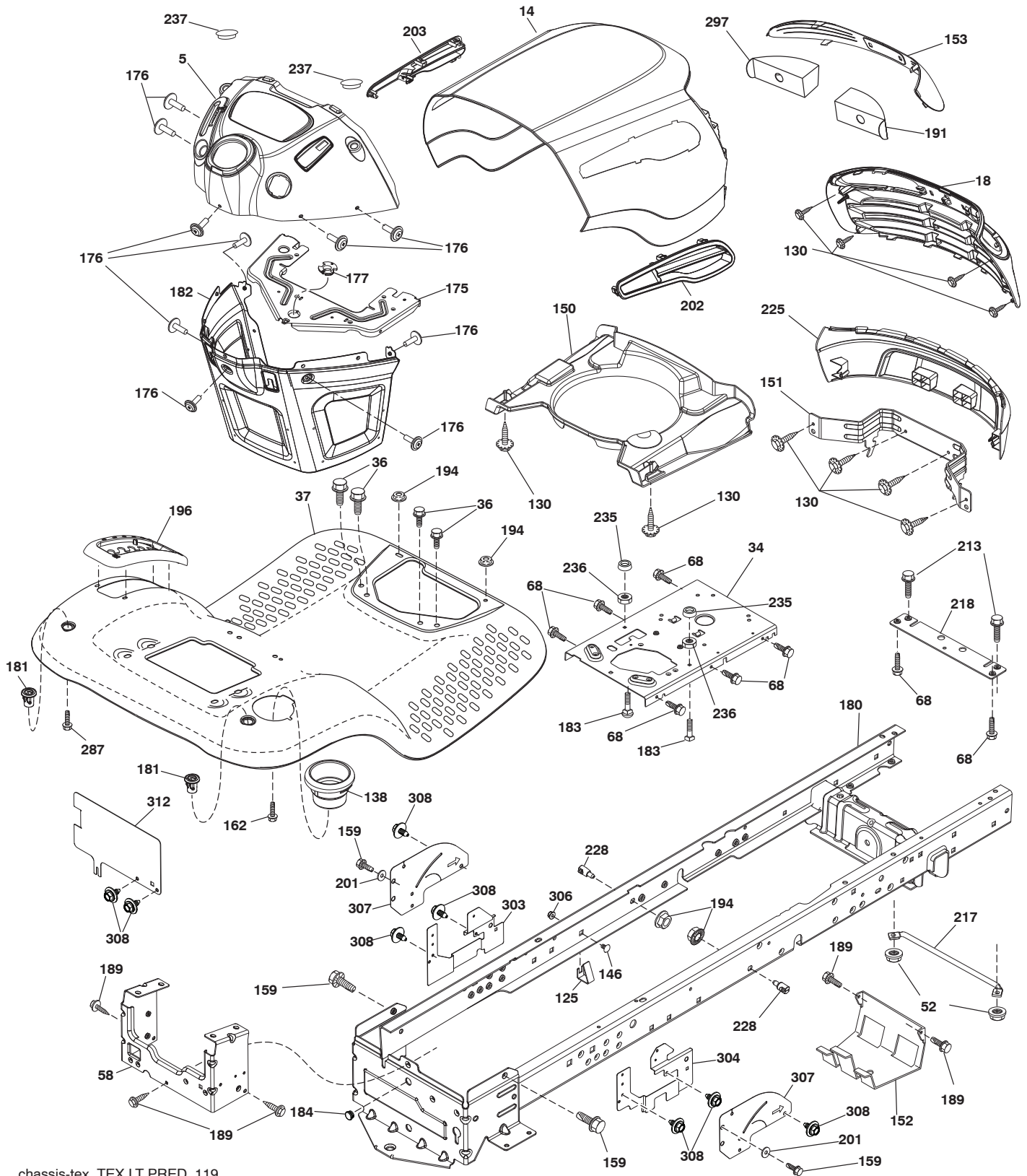
## ELECTRICAL

| KEY NO. | PART NO.  | DESCRIPTION   |
|---------|-----------|---|
| 1       | 163465    | Battery   |
| 2       | 74760412  | Bolt Hex Hd 1/4-20 unc x 3/4                              |
| 8       | 193228    | Box Battery   |
| 16      | 176138    | Switch Interlock Push-In                                  |
| 21      | 400252    | Harness Socket Light w/4152J                              |
| 22      | 4152J     | Bulb Light  |
| 25      | 581498001 | Cable Starter   |
| 26      | 175158    | Fuse  |
| 27      | 73510400  | Nut Keps Hex 1/4-20 unc                                   |
| 28      | 421686    | Cable, Ground   |
| 29      | 401545    | Switch, Seat  |
| 30      | 193350    | Switch, Ign   |
| 33      | 411934    | Key/Chain   |
| 34      | 110712X   | Switch Light / Reset                                      |
| 40      | 581023101 | Harness Ign. Dash<br>(if equipped with rear solenoid)     |
| --      | 401098    | Harness Ign. Dash<br>(if equipped with front solenoid)    |
| 43      | 192507    | Solenoid  |
| 55      | 17060512  | Screw Thdrol 5/16-18 x 3/4 TYTT                           |
| 71      | 581023001 | Harness Ign. Chassis<br>(if equipped with rear solenoid)  |
| --      | 400449    | Harness Ign. Chassis<br>(if equipped with front solenoid) |
| 79      | 175242    | Bulbholder Asm. Incandescent                              |
| 87      | 197802    | Switch Interlock Clutch Cable                             |
| 90      | 435395    | Cover Terminal Battery                                    |
| 92      | 196615    | Harness Pigtail Reverse Switch                            |
| 93      | 192540    | Screw Plastite 10 - 14 x 2 00                             |
| 94      | 191834    | Module Reverse Ros  |
| 99      | 17670412  | Screw   |
| 106     | 174814    | Pal Nut   |

**NOTE:** All component dimensions given in U.S. inches.  
1 inch = 25.4 mm.

# TRACTOR- -MODEL NO. 917.990380

## CHASSIS AND ENCLOSURES



chassis-tex\_TEX LT PRED\_119

# TRACTOR- -MODEL NO. 917.990380

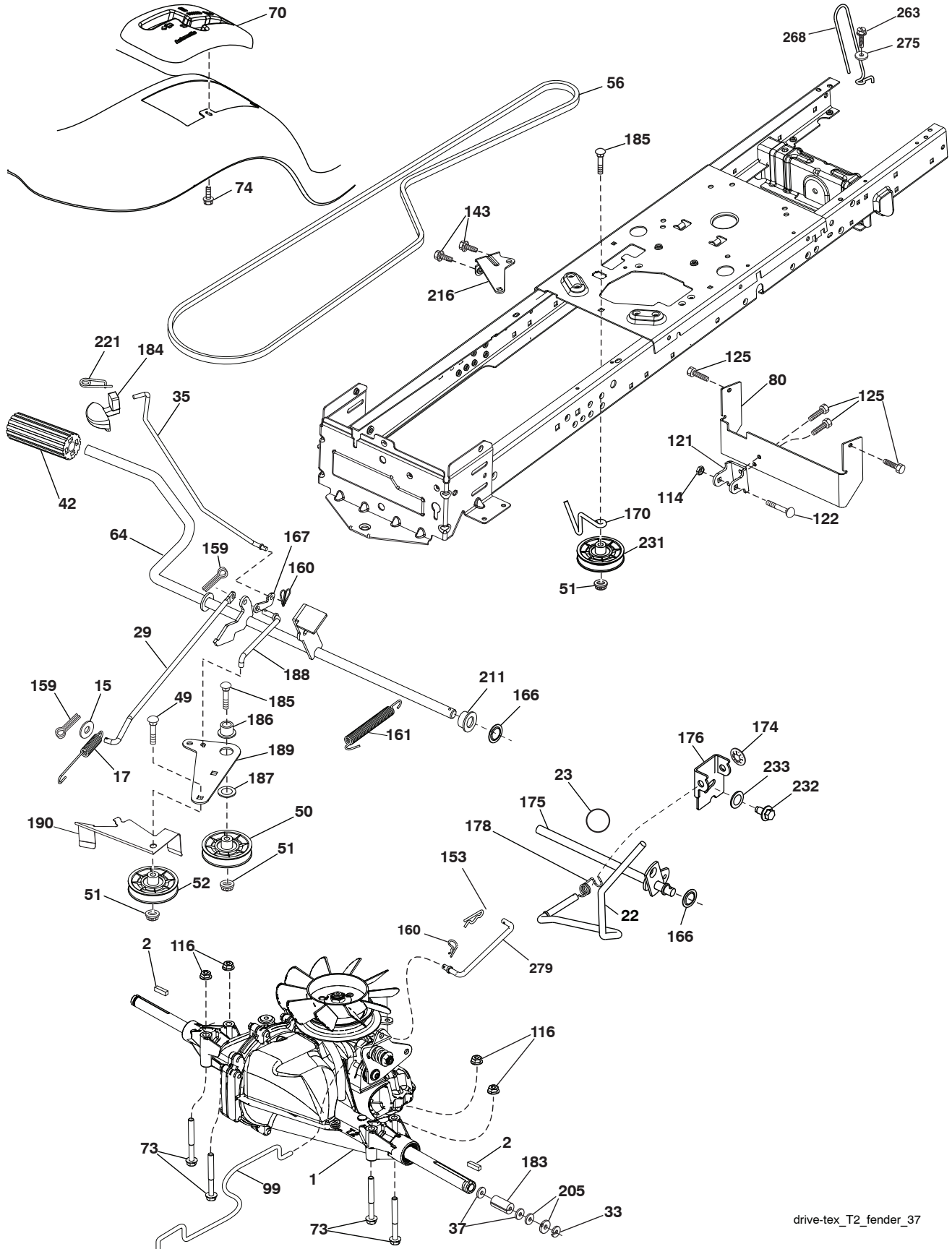
## CHASSIS AND ENCLOSURES

| KEY NO. | PART NO.   | DESCRIPTION                      |
|---------|------------|----------------------------------|
| 5       | 408874X428 | Dash                             |
| 14      | 198416X615 | Hood                             |
| 18      | 423156     | Grille                           |
| 34      | 580910801  | Plate Engine                     |
| 36      | 17060512   | Screw 5/16-18 x 3/4              |
| 37      | 414872X615 | Fender                           |
| 52      | 73680500   | Nut Crown Lock 5/16-18           |
| 58      | 412280     | Drawbar Upper                    |
| 68      | 17490508   | Screw Thdrol 5/16-18 x 1/2       |
| 125     | 581684801  | Clip Fuel Line                   |
| 130     | 416358     | Screw #10 x 0.750                |
| 138     | 193224X428 | Cupholder                        |
| 146     | 581857901  | Bolt                             |
| 150     | 400267     | Duct Heat Hood                   |
| 151     | 187568     | Bracket Pivot                    |
| 152     | 199535     | Shield Browning/Debris           |
| 153     | 400550X599 | Lens                             |
| 159     | 17000612   | Screw Hexwsh Thdrol 3/8-16 x 3/4 |
| 162     | 142432     | Screw Hex Wsh Hi-Lo 1/4 x 1/2    |
| 175     | 199472     | Crossmember                      |
| 176     | 400776     | Screw 10-24 x 5/8 Wshd Qdrx      |
| 177     | 195228     | Bushing Steering                 |
| 180     | 415063     | Chassis                          |
| 181     | 193102X428 | Bushing Mtg. Fender Crgo.        |
| 182     | 407176     | Dash Lower                       |
| 183     | 74520520   | Bolt Full Thd 5/16-18 x 1-1/4    |
| 184     | 587554101  | Plug                             |
| 189     | 17000512   | Screw 5/16-18 x 3/4              |
| 191     | 416502     | Insert Reflective RH             |
| 194     | 73900500   | Nut Lock Hex Flange 5/16-18      |
| 196     | 414579     | Console Asm. Deck Lift           |
| 201     | 19132016   | Washer                           |
| 202     | 580427401  | Vent Hood Side Panel RH          |
| 203     | 580427501  | Vent Hood Side Panel LH          |
| 213     | 74760512   | Bolt Hex Hd 5/16-18 x 3/4        |
| 217     | 409167     | Rod Pivot Hood                   |
| 218     | 196395     | X-Piece Hood Stop                |
| 225     | 400549X615 | Bumper                           |
| 228     | 195161     | Stud Fastener                    |
| 235     | 406129     | Spacer Fender                    |
| 236     | 73930500   | Nut Center Lock 5/16-18          |
| 237     | 403704     | Plug Mount Cargo                 |
| 287     | 17600406   | Screw 1/4-20 x 3/8               |
| 297     | 401827     | Insert Reflective LH             |
| 303     | 587493401  | Shield, Lower LH                 |
| 304     | 587865102  | Shield RH                        |
| 306     | 73900600   | Nut Lock                         |
| 307     | 587494601  | Shield, Upper                    |
| 308     | 171877     | Bolt, 5/16-18 unc x 3/4          |
| 312     | 587493002  | Shield, Drawbar                  |

**NOTE:** All component dimensions given in U.S. inches.  
1 inch = 25.4 mm.

# TRACTOR- -MODEL NO. 917.990380

## DRIVE



drive-tex\_T2\_fender\_37



## TRACTOR- -MODEL NO. 917.990380

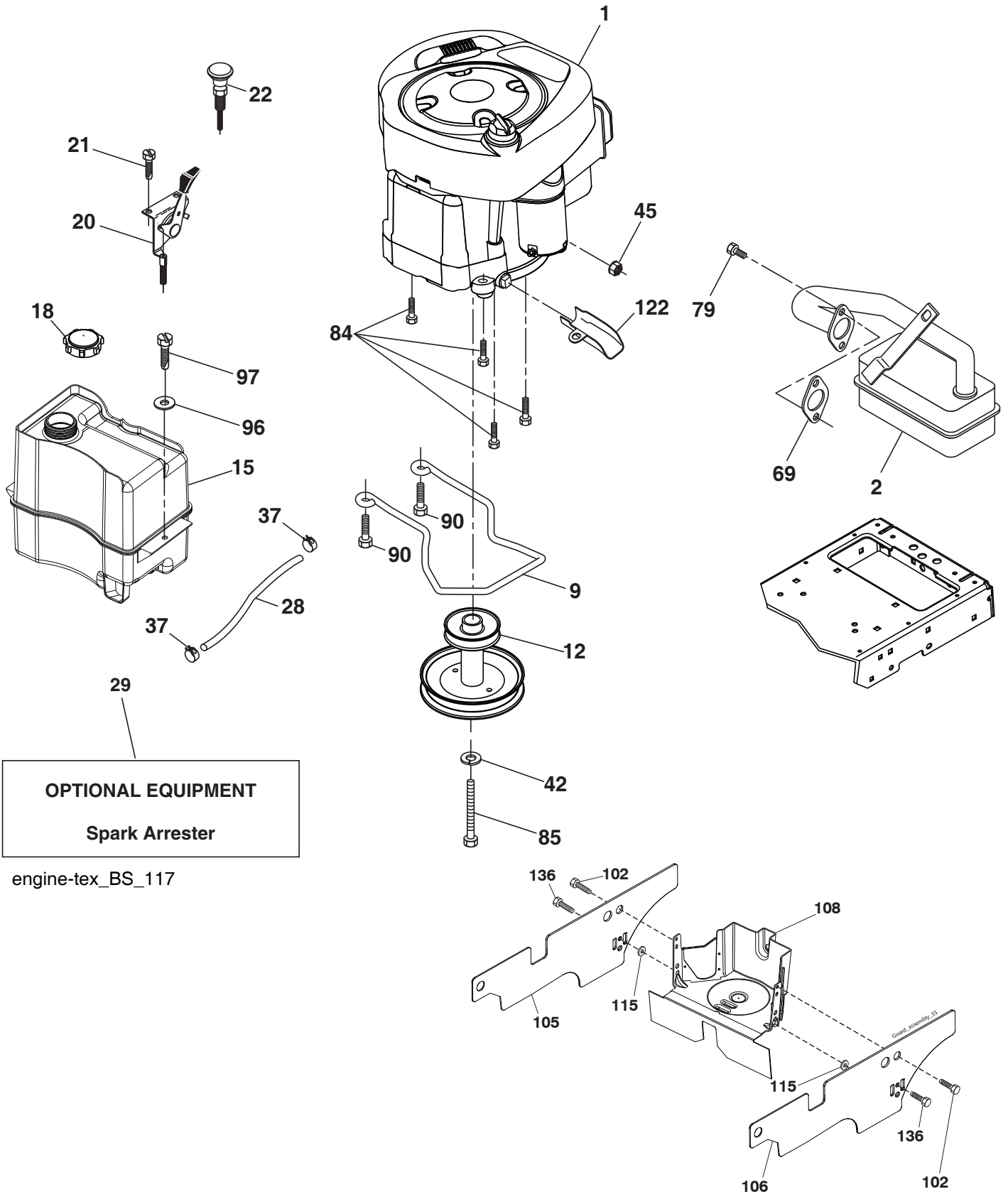
### DRIVE

| KEY<br>NO. | PART<br>NO. | DESCRIPTION   | KEY<br>NO. | PART<br>NO. | DESCRIPTION                   |
|------------|-------------|---|------------|-------------|-------------------------------|
| 1          | -----       | Transaxle, T2-CDBE-5X1A-18C1<br>(581115602) (Order parts from<br>transaxle manufacturer.) | 160        | 169484      | Retainer Clip                 |
| 2          | 123583X     | Key Square  | 161        | 105709X     | Spring, Return, Clutch        |
| 15         | 19131316    | Washer 13/32 x 13/16 x 16 Ga.   | 166        | 429164      | Nut Push .625                 |
| 17         | 197296      | Spring, Brake   | 167        | 405257      | Latch Brake Parking           |
| 22         | 197660      | Rod Shift   | 170        | 413430      | Keeper Belt Centerspan        |
| 23         | 106933X     | Knob  | 174        | 197289      | Nut Push                      |
| 29         | 581506401   | Rod, Brake  | 175        | 408539      | Shaft Asm Shift               |
| 33         | 12000001    | Ring E  | 176        | 196214      | Arm Clevis Rod Shift          |
| 35         | 401031      | Rod, Brake, Park  | 178        | 197456      | Spring Shift                  |
| 37         | 121749X     | Washer 25/32 x 1-1/4 x 16   | 183        | 156972      | Spacer Axle                   |
| 42         | 8883R       | Cover, Foot Pedal   | 184        | 199996X428  | Handle Parking Brake          |
| 49         | 72110614    | Bolt  | 185        | 72110622    | Bolt                          |
| 50         | 194327      | Pulley Idler Flat   | 186        | 194321      | Spacer Retainer               |
| 51         | 73900600    | Lock Nut 3/8-16   | 187        | 19133210    | Washer                        |
| 52         | 194326      | Idler V-Groove  | 188        | 194323      | Link Clutch Ground Drive      |
| 56         | 581270501   | V-Belt, Drive   | 189        | 194317      | Bellcrank Ground Drive        |
| 64         | 196200      | Shaft Asm. Pedal Brake Control  | 190        | 194318      | Keeper Bellcrank Ground Drive |
| 70         | 193220x428  | Console   | 205        | 121748X     | Washer 25/32 x 1-5/8 x 16 Ga. |
| 73         | 74490544    | Bolt Hex 5/16-18 x 2-1/2 G5   | 211        | 196212      | Bushing Shaft                 |
| 74         | 142432      | Screw 1/4 x 1/2   | 216        | 196131      | Bracket Pulley Idler          |
| 80         | 581550701   | Strap Torque  | 221        | 403187      | Retainer Spring Clip Handle   |
| 99         | 408418      | Rod Spring Bypass   | 231        | 407287      | Idler V-Groove                |
| 114        | 73800500    | Nut Lock  | 232        | 74780716    | Bolt 7/16-14 x 1 Gr 5         |
| 116        | 73900500    | Nut Lock Hex Flange 5/16-18   | 233        | 405296      | Washer Serrated               |
| 121        | 175611      | Bracket Strap Torque  | 263        | 17000612    | Screw 3/8-16 x 3/4            |
| 122        | 72010520    | Bolt 5/16-18 x 2.50   | 268        | 182402      | Guard Muffler                 |
| 125        | 17000512    | Screw 5/16-18 x 3/4   | 275        | 19131614    | Washer 13/32 x 1 x 14 Ga.     |
| 143        | 17490508    | Screw THDROL 5/16-18  | 279        | 424155      | Link Shift                    |
| 153        | 4497H       | Retainer Spring 1"  |            |             |                               |
| 159        | 76020412    | Pin Cotter 1/8 x 3/4  |            |             |                               |

**NOTE:** All component dimensions given in U.S. inches  
1 inch = 25.4 mm

# TRACTOR- -MODEL NO. 917.990380

## ENGINE



**OPTIONAL EQUIPMENT**  
**Spark Arrester**

engine-tex\_BS\_117

# TRACTOR- -MODEL NO. 917.990380

## ENGINE

| KEY NO. | PART NO.   | DESCRIPTION   |
|---------|------------|---|
| 1       | — — — —    | Engine B&S Model No. 31R777-0003-B1 (585688801) (See Transaxle Break-down.) |
| 2       | 137352     | Muffler   |
| 9       | 501832601  | Keeper Belt Engine  |
| 12      | 586478501  | Pulley Engine   |
| 15      | 581289901  | Tank Fuel 1.50  |
| 18      | 430220     | Cap Asm   |
| 20      | 176636X428 | Control Throttle  |
| 21      | 416358     | Screw #10 x 0.750   |
| 22      | 187771X428 | Control Choke   |
| 28      | 137040     | Fuel Line   |
| 29      | 137180     | Spark Arrester Kit  |
| 37      | 123487X    | Clamp Hose  |
| 42      | 10040700   | Washer Lock 7/16  |
| 45      | 73510400   | Nut Keps Hex 1/4-20 unc   |
| 69      | 165291     | Gasket  |
| 79      | 192334     | Screw Socket Hd 5/16-18 x .75   |
| 84      | 17060620   | Screw 3/8-16 x 1-1/4  |
| 85      | 173937     | Bolt Hex 7/16-20 x 4 x Gr. 5-1.5  |
| 90      | 17000616   | Screw 3/8-16 x 1.0  |
| 96      | 19091416   | Washer 9/32 x 7/8 x 16 Ga.  |
| 97      | 17670412   | Screw 1/4-20 x 3/4  |
| 102     | 17000512   | Screw 5/16-18 x 3/4   |
| 105     | 410528     | Shield, Side LH   |
| 106     | 410529     | Shield, Side RH   |
| 108     | 421794     | Cover, Asm. Eng. Pulley   |
| 115     | 423062     | Palnut 1/4  |
| 122     | 421922     | Extension Drain Oil   |
| 136     | 137729     | Screw   |

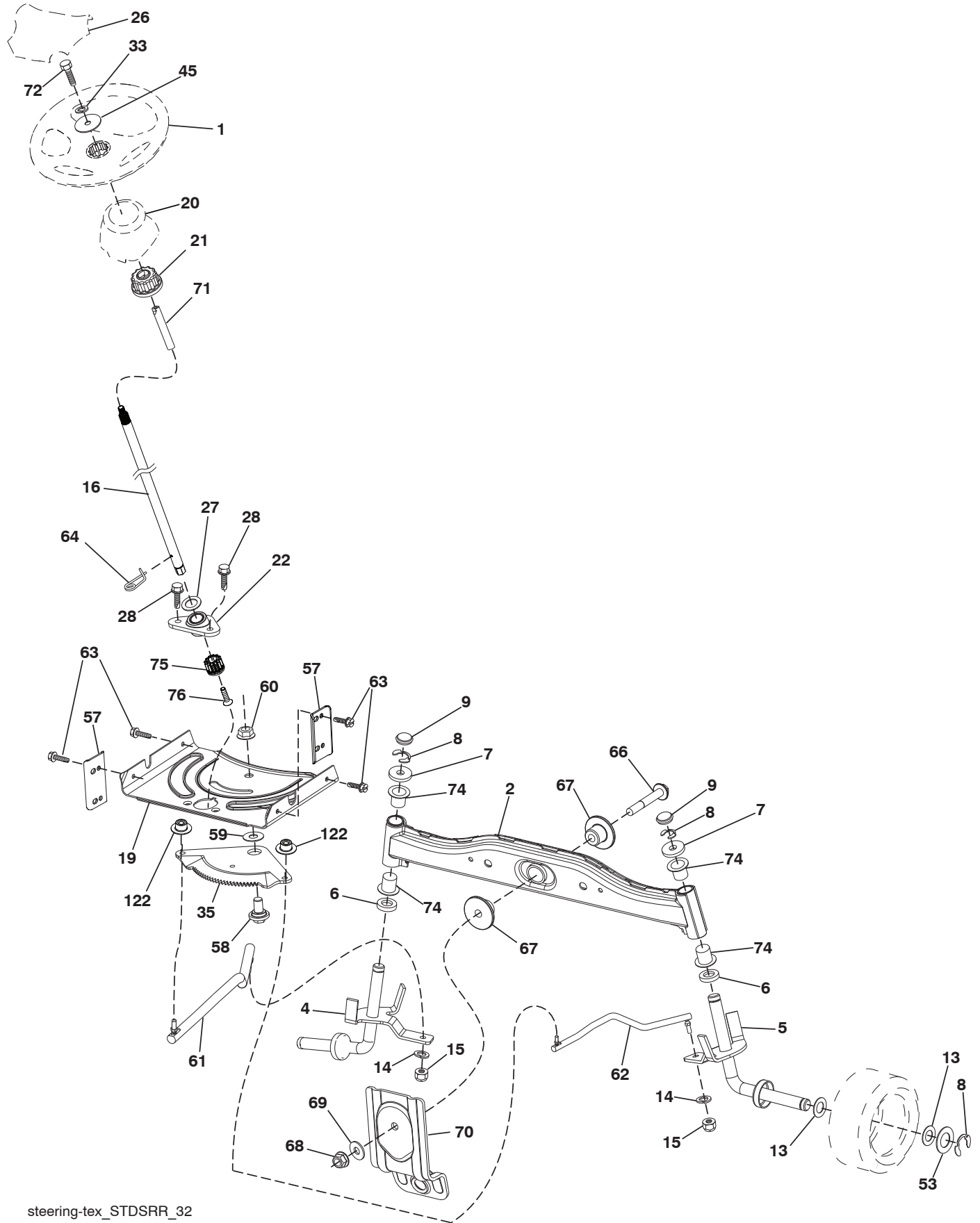
**NOTE:** All component dimensions given in U.S. inches  
1 inch = 25.4 mm

### Engine Power Rating Information

The gross power rating for individual gas engine models is labeled in accordance with SAE (Society of Automotive Engineers) code J1940 (Small Engine Power & Torque Rating Procedure), and rating performance has been obtained and corrected in accordance with SAE J1995 (Revision 2002-05). Torque values are derived at 3060 RPM; horsepower values are derived at 3600 RPM. Actual gross engine power will be lower and is affected by, among other things, ambient operating conditions and engine-to-engine variability. Given both the wide array of products on which engines are placed and the variety of environmental issues applicable to operating the equipment, the gas engine will not develop the rated gross power when used in a given piece of power equipment (actual "on-site" or net power). This difference is due to a variety of factors including, but not limited to, accessories (air cleaner, exhaust, charging, cooling, carburetor, fuel pump, etc.), application limitations, ambient operating conditions (temperature, humidity, altitude), and engine-to-engine variability. Due to manufacturing and capacity limitations, Briggs & Stratton may substitute an engine of higher rated power for this Series engine.

# TRACTOR- -MODEL NO. 917.990380

## STEERING ASSEMBLY



steering-tex\_STDSRR\_32

# TRACTOR- -MODEL NO. 917.990380

## STEERING ASSEMBLY

| KEY NO. | PART NO.   | DESCRIPTION                         |
|---------|------------|-------------------------------------|
| 1       | 414803X428 | Wheel, Steering                     |
| 2       | 418168     | Axle Asm., Front                    |
| 4       | 403087     | Spindle Asm., LH                    |
| 5       | 403088     | Spindle Asm., RH                    |
| 6       | 6266H      | Washer Thrust 0.75 x 1.23           |
| 7       | 121748X    | Washer 25/32 x 1-5/8 x 16 Ga.       |
| 8       | 12000029   | Ring, Clip #T5304-75                |
| 9       | 121232X    | Cap, Spindle                        |
| 13      | 121749X    | Washer 25/32 x 1-1/4 x 16 Ga.       |
| 14      | 10040600   | Washer Lock 3/8                     |
| 15      | 73540600   | Nut, Crown Lock 3/8-24 unf          |
| 16      | 585869202  | Shaft Steering                      |
| 19      | 194729     | Plate Steering                      |
| 20      | 400803X428 | Boot, Steering                      |
| 21      | 186737     | Adapter, Wheel Steering             |
| 22      | 585029802  | Bearing, Shaft                      |
| 26      | 414852X428 | Insert, Wheel Steering              |
| 27      | 19211616   | Washer 21/32 x 1 x 16 Ga.           |
| 28      | 17000612   | Screw 3/8-16 x 3/4                  |
| 33      | 10040500   | Washer Lock 5/16                    |
| 35      | 194732     | Gear, Sector Plate                  |
| 45      | 19113812   | Washer 11/32 x 2-3/8 x 12 Ga.       |
| 53      | 188967     | Washer Hardened .793 x 1.637 x .060 |
| 57      | 407465     | Bracket Upstop                      |
| 58      | 194747     | Bolt Shoulder Sector Pivot CFM      |
| 59      | 194748     | Washer Thrust Sector Steering       |
| 60      | 73971000   | Nut Flange Lock 5/8-11              |
| 61      | 194740     | Draglink, LH                        |
| 62      | 194741     | Draglink, RH                        |
| 63      | 17000512   | Screw 5/16-18 x 3/4                 |
| 64      | 199849     | Retainer Clip Spring Steering       |
| 66      | 71020748   | Bolt Hex Fghd 7/16-14 x 3 Serr      |
| 67      | 194737     | Bushing PM Front Axle               |
| 68      | 73900700   | Nut Lock                            |
| 69      | 199162     | Washer 1.5 x .505 x .118            |
| 70      | 585338801  | Bracket Deck Susp. Front            |
| 71      | 190752     | Shaft Ext. Steering                 |
| 72      | 428982     | Bolt Fin Hex 5/16-18 x 4            |
| 74      | 3366R      | Bearing                             |
| 75      | 580683701  | Pinion                              |
| 76      | 580683601  | Screw, Head, Sock                   |
| 122     | 444962     | Cap Gear Sector                     |

**NOTE:** All component dimensions given in U.S. inches.  
1 inch = 25.4 mm.



# TRACTOR- -MODEL NO. 917.990380

## MOWER

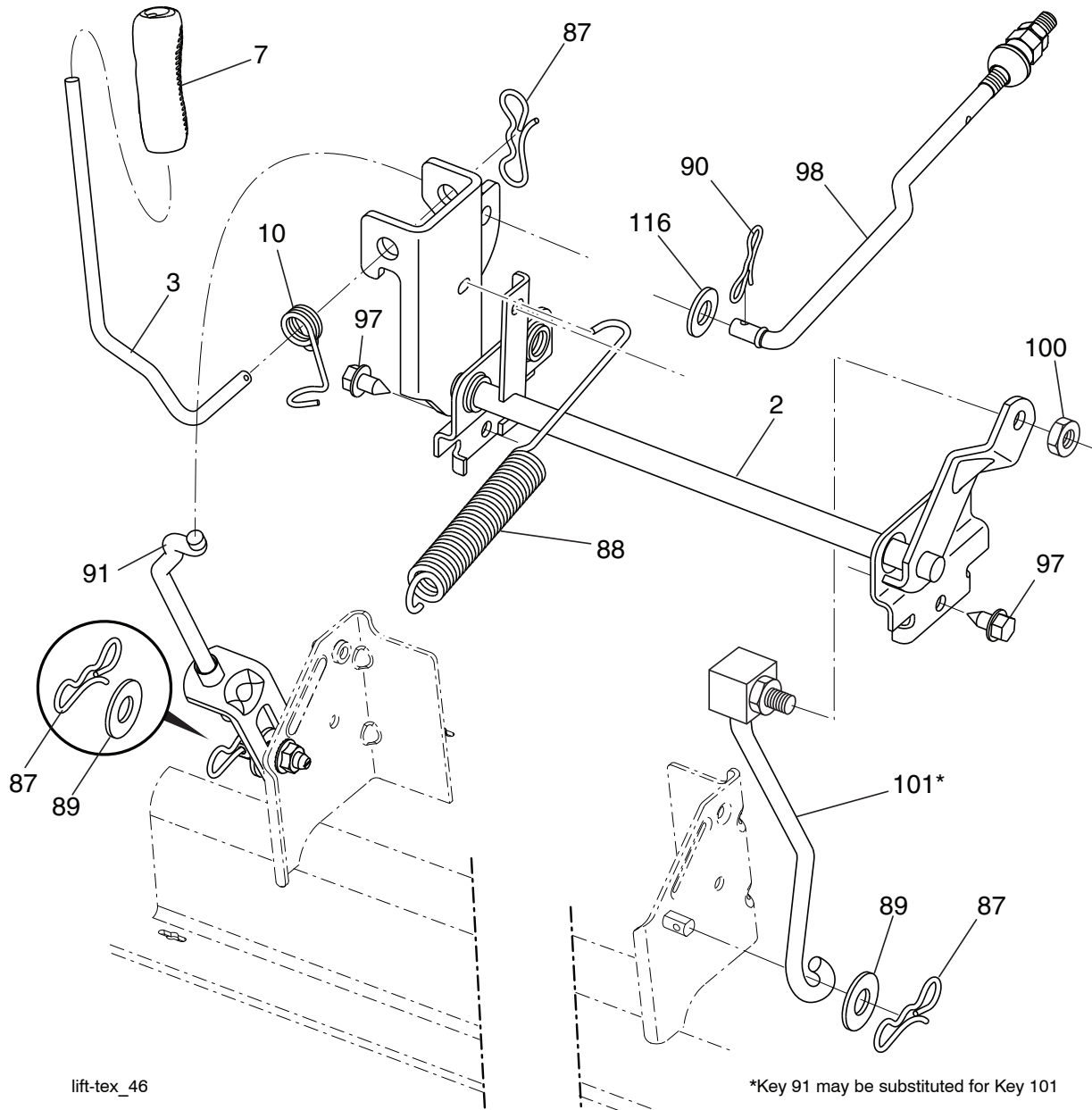
| KEY NO. | PART NO.   | DESCRIPTION                        | KEY NO. | PART NO.  | DESCRIPTION   |
|---------|------------|------------------------------------|---------|-----------|---|
| 1       | 196495     | Deck Weldment Mower                | 101     | 193107    | Cover, Asm. Mulching 42"  |
| 6       | 195186     | Arm Suspension                     | 102     | 71081010  | Screw Pan Hd Phillips 10-24 x 5/8   |
| 7       | 416358     | Screw #10 x .750 BOS Thread        | 103     | 19061216  | Washer #10  |
| 11      | 424752     | Blade, 42" 3NI                     | 104     | 10071000  | Washer Lock #10   |
| 12      | 584309301  | Screw                              | 105     | 160793    | Latch Asm   |
| 13      | 587256501  | Shaft Assembly, Mandrel            | 106     | 2029J     | Nut Weld 327/304#10-24  |
| 14      | 187281     | Housing, Mandrel                   | 113     | 17000510  | Bolt 5/16-18  |
| 15      | 585323901  | Bearing, Mandrel                   | 116     | 4898H     | Bolt, Shoulder  |
| 19      | 196539     | Bolt, Shoulder                     | 117     | 188606    | Wheel, Gauge  |
| 20      | 159770     | Baffle Vortex                      | 119     | 19121414  | Washer 3/8 x 7/8 x 14 Ga.   |
| 21      | 73680500   | Nut, Crownlock 5/16-18 unc         | 122     | 197258    | Keeper Belt Engine LH   |
| 23      | 192557     | Bracket, Deflector                 | 123     | 197259    | Keeper Belt Engine RH   |
| 24      | 105304X    | Cap, Sleeve                        | 144     | 199204    | Keeper Belt   |
| 25      | 197026     | Spring, Torsion, Deflector         | 145     | 193197    | Pulley Idler, Flat  |
| 26      | 110452X    | Nut, Push                          | 147     | 401971    | Spring Return   |
| 27      | 406520X428 | Shield, Deflector                  | 152     | 584243501 | Manual Clutch Cable   |
| 29      | 131491     | Rod, Hinge                         | 188     | 195161    | Stud Fastener   |
| 32      | 197473     | Pulley, Mandrel                    | 189     | 73900500  | Nut Lock Hex Flange   |
| 33      | 400234     | Nut, Toplock, Flanged              | 192     | 197260    | Bracket Brake Stand LH  |
| 34      | 72110612   | Bolt Carr Sh. 3/8-16 x 1-1/2 Gr. 5 | 195     | 17000612  | Screw Hex Wsh Thdr 3/8-16 x 3/4   |
| 35      | 133835     | Fastner, Christmas Tree            | 208     | 17670608  | Screw 3/8-16 x 1/2  |
| 36      | 197379     | Pulley, Idler                      | 241     | 152927    | Screw TT #10-32.5. 3/8 Flange   |
| 37      | 19131316   | Washer                             | 242     | 415598    | Port Washout  |
| 38      | 432520     | Keeper Belt LH Mandrel             | 243     | 432394    | Cover Asy. Tex Deck 42"   |
| 40      | 73900600   | Nut, Lock Flg. 3/8-16 unc          | 247     | 430261    | Shield, Deck Rh 42"   |
| 41      | 584953901  | Bolt, Hex 313-18 x 1.19            | 248     | 430260    | Shield, Deck Lh 42"   |
| 42      | 198410     | Spring Torsion Brake               | 249     | 406514    | Cover, Cable Clutch 38/42"  |
| 43      | 197256     | Spring Torsion Retainer            | 253     | 427350    | Rivet, Rufflok 25 x 24  |
| 46      | 137729     | Screw Thd Roll 1/4-20 x 5/8        | --      | 587253301 | Mandrel Assembly (Includes housing (key #14), shaft assembly (key #13), and bearing only (key #15) - pulley/nut/washer and blade bolt/washers not included) |
| 47      | 197250     | Bracket Clutch Cable               | --      | 588119101 | Replacement Mower, Complete   |
| 55      | 437110     | Arm, Idler                         |         |           |   |
| 56      | 199092     | Spacer, Retainer                   |         |           |   |
| 57      | 17000616   | Screw 3/8-16 x 1                   |         |           |   |
| 59      | 141043     | Guard, Tuv Idler                   |         |           |   |
| 60      | 197261     | Arm Brake Mower                    |         |           |   |
| 62      | 72110616   | Bolt Rd Hd Sq Nk 3/8-16 unc x 2    |         |           |   |
| 63      | 199477     | Arm Brake Mower                    |         |           |   |
| 64      | 199790     | Link Brake Asm                     |         |           |   |
| 67      | 198398X428 | Handle Clutch Cable                |         |           |   |
| 68      | 429636     | Drive, Belt                        |         |           |   |
| 69      | 72140505   | Bolt                               |         |           |   |
| 70      | 401246     | Clutch Asm Manual                  |         |           |   |
| 80      | 423062     | Palnut 1/4                         |         |           |   |

**NOTE:** All component dimensions given in U.S. inches  
1 inch = 25.4 mm



# TRACTOR- -MODEL NO. 917.990380

## MOWER LIFT



| KEY NO. | PART NO.   | DESCRIPTION                  |
|---------|------------|------------------------------|
| 2       | 197250     | Shaft Asm., Lift             |
| 3       | 195231     | Lever Asm., Lift RH          |
| 7       | 445060X428 | Grip, Lever                  |
| 10      | 196314     | Spring Torsion               |
| 87      | 194209     | Pin Cotter 7/16 Bow Tie Lock |
| 88      | 410710     | Spring Lift Assist           |
| 89      | 19191912   | Washer Clear Zinc            |
| 90      | 194208     | Pin Cotter 5/16 Bow Tie Lock |
| 91      | 195181     | Link Lift Susp Mower Rear    |

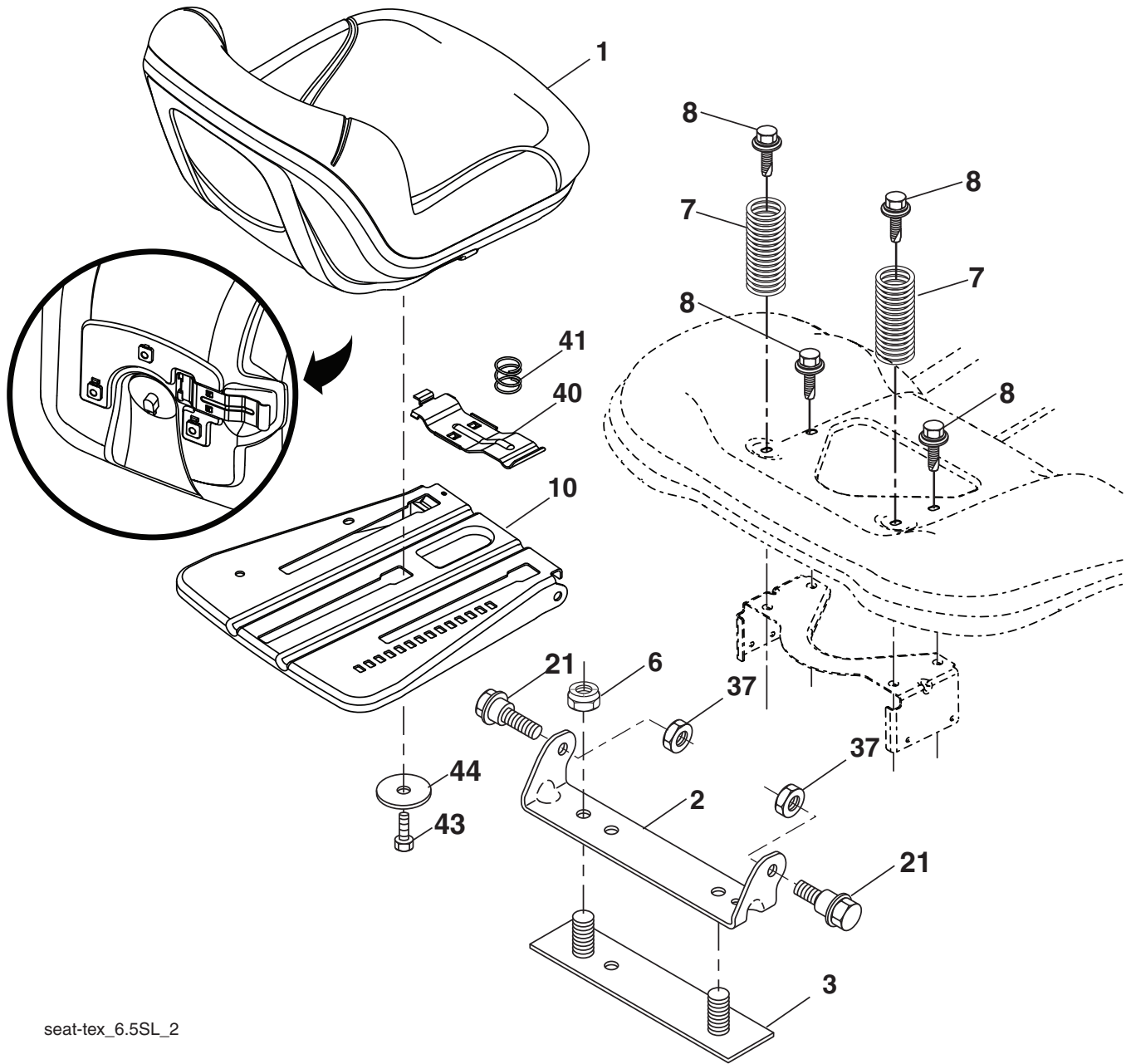
| KEY NO. | PART NO. | DESCRIPTION                   |
|---------|----------|-------------------------------|
| 97      | 17000612 | Screw 3/8-16 x .75            |
| 98      | 195270   | Link Lift Susp. Front Mower   |
| 100     | 73930600 | Nut Centerlock 3/8-16 unc     |
| 101     | 407003   | Link Asm. Lift FXD            |
| 116     | 19151516 | Washer 15/32 x 15/16 x 16 Ga. |

**NOTE:** All component dimensions given in U.S. inches  
1 inch = 25.4 mm



# TRACTOR- -MODEL NO. 917.990380

## SEAT ASSEMBLY



seat-tex\_6.5SL\_2

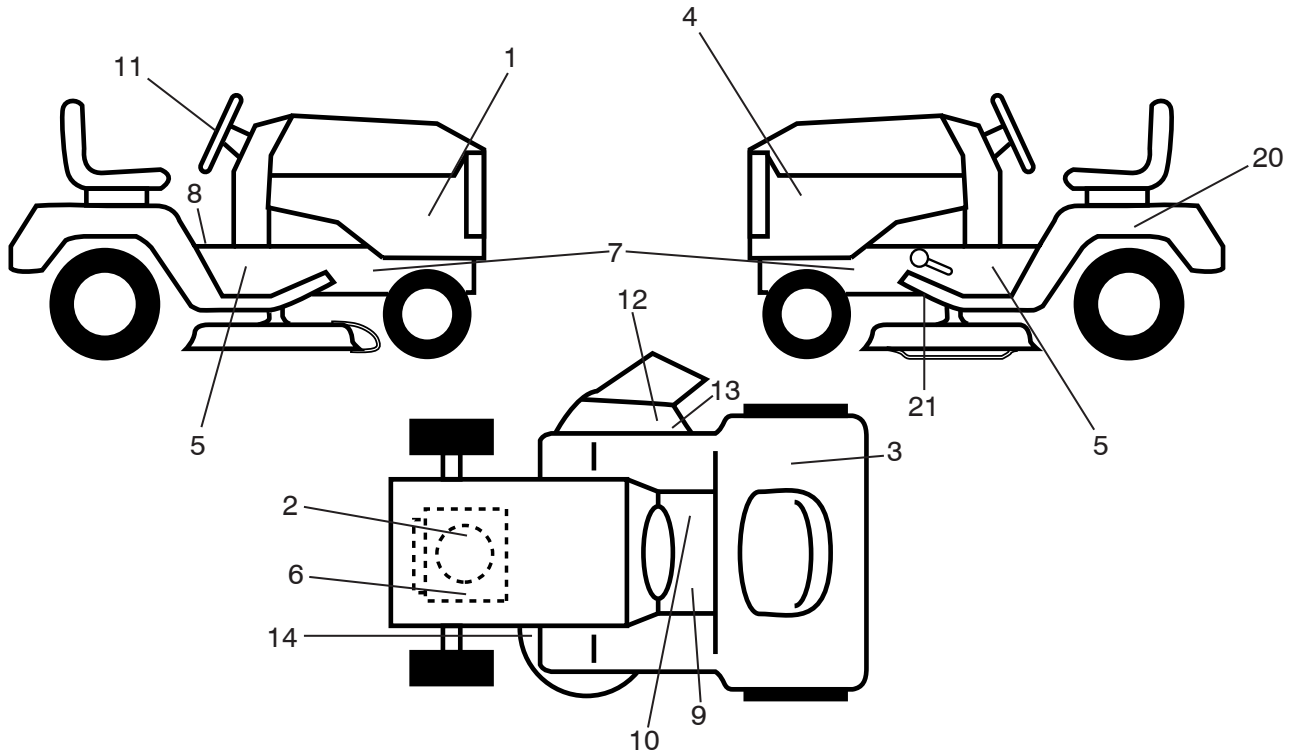
| KEY NO. | PART NO. | DESCRIPTION                   |
|---------|----------|-------------------------------|
| 1       | 197250   | Seat                          |
| 2       | 180166   | Bracket Pivot Fender          |
| 3       | 140675   | Strap, Asm Fender             |
| 6       | 73800600 | Nut, Lock w/Ins. 3/8-16 unc   |
| 7       | 124181X  | Spring, Seat Cprsn            |
| 8       | 171877   | Bolt 5/16-18 unc x 3/4 w/Sems |
| 10      | 196977   | Pan, Seat                     |
| 21      | 171852   | Bolt, Shoulder 5/16-18        |

| KEY NO. | PART NO. | DESCRIPTION                   |
|---------|----------|-------------------------------|
| 37      | 73800500 | Nut, Lock 5/16-18 unc         |
| 40      | 197661   | Handle Slide                  |
| 41      | 198200   | Spring Latch                  |
| 43      | 74760612 | Bolt 3/8-16 unc x 3/4         |
| 44      | 19133812 | Washer 13/32 x 2 3/8 x 12 Ga. |

**NOTE:** All component dimensions given in U.S. inches.  
1 inch = 25.4 mm

# TRACTOR- -MODEL NO. 917.990380

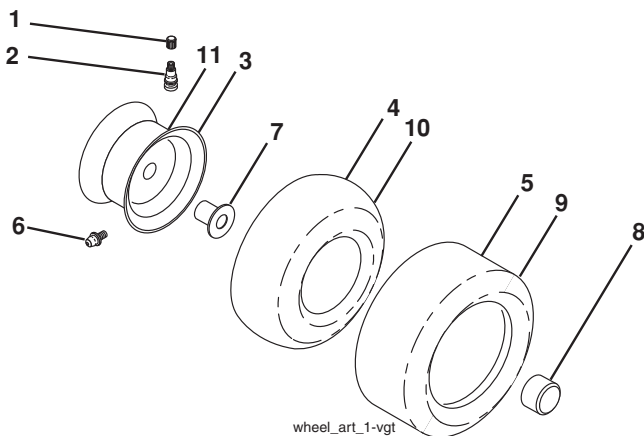
## DECALS



| KEY NO. | PART NO.  | DESCRIPTION                       |
|---------|-----------|-----------------------------------|
| 1       | 586207301 | Decal Sideskirt RH                |
| 2       | 586373401 | Decal Eng. H.P.                   |
| 3       | 588049701 | Decal Fender 100 DB/CE            |
| 4       | 586207302 | Decal Sideskirt LH                |
| 5       | 581579801 | Decal Warning                     |
| 6       | 581579701 | Decal Warning Engine Symbols      |
| 7       | 581579601 | Decal Chassis Hot Muffler         |
| 8       | 581578101 | Decal Fender Warn                 |
| 9       | 581724001 | Decal Brake/Clutch Symbols        |
| 10      | 581578001 | Decal Saddle Brake Parking        |
| 11      | 439525    | Decal Ins Strg Whl                |
| 12      | 584904601 | Decal, Deflect. Warning           |
| 13      | 581579201 | Decal Deflect. Warn. Cutfng. Sym. |

| KEY NO. | PART NO.   | DESCRIPTION                |
|---------|------------|----------------------------|
| 14      | 581580003  | Decal V-Belt Schematic     |
| 20      | 145005     | Decal Bat Dan/Psn          |
| 21      | 421534     | Decal V-Belt Sch.          |
| --      | 581724601  | Decal Drawbar Load Limit   |
| --      | 581724801  | Decal Bypass               |
| --      | 193226X428 | Pad Footrest LH            |
| --      | 193227X428 | Pad Footrest RH            |
| --      | 588096040  | Manual Operator's (Euro)   |
| --      | 588096050  | Manual Operator's (Scand)  |
| --      | 588096020  | Manual Operator's (Ebloc)  |
| --      | 588096030  | Manual Operator's (Baltic) |
| --      | 588096026  | Manual Parts               |

## WHEELS & TIRES



| KEY NO. | PART NO.   | DESCRIPTION                       |
|---------|------------|-----------------------------------|
| 1       | 59192      | Cap Valve Tire                    |
| 2       | 65139      | Stem Valve                        |
| 3       | 106732X613 | Rim Asm 6" Front                  |
| 4       | 59904      | Tube Front (Service Item Only)    |
| 5       | 106222X    | Tire Front 15 x 6-6               |
| 6       | 278H       | Fitting Grease (Front Wheel Only) |
| 7       | 9040H      | Bearing Flange (Front Wheel Only) |
| 8       | 104757X428 | Cap Axle Blk 1 50 x 1 00          |
| 9       | 420531     | Tire Rear 18 x 9.5-8              |
| 10      | 7152J      | Tube Rear (Service Item Only)     |
| 11      | 106108X613 | Rim Asm 8" Rear Service           |
| --      | 144334     | Sealant, Tire (10 oz. Tube)       |

**NOTE:** All component dimensions given in U.S. inches  
1 inch = 25.4 mm

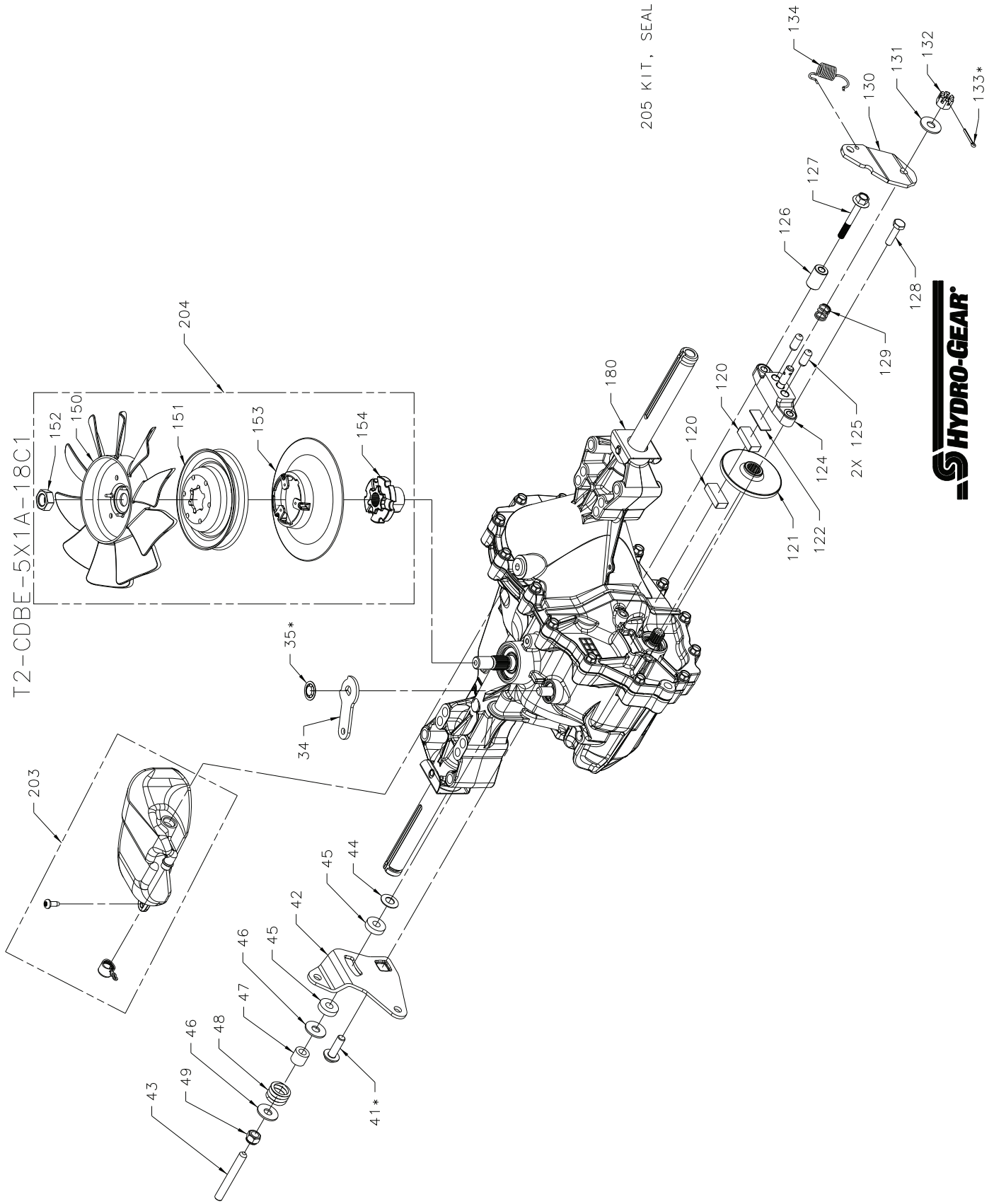
---

# SERVICE NOTES

---

# TRACTOR - - MODEL NUMBER 917.990380

## HYDRO GEAR - MODEL NUMBER T2-CDBE-5X1A-18C1



## TRACTOR - - MODEL NUMBER 917.990380

### HYDRO GEAR - MODEL NUMBER T2-CDBE-5X1A-18C1

| KEY NO. | PART NO.  | DESCRIPTION                  |
|---------|-----------|------------------------------|
| 34      | 584280701 | Arm Bypass                   |
| 35      | 584281001 | Ring, Ret .375 Ext           |
| 41      | 584281201 | Screw 5/16-18X1              |
| 42      | 584289801 | Arm Control                  |
| 43      | 584281301 | Screw Set 5/16-24X2.50       |
| 44      | 584283301 | Washer Belleville            |
| 45      | 584283101 | Washer Plastic.32X.80X.21    |
| 46      | 584283001 | Washer.34X.88X.06            |
| 47      | 584282801 | Spacer .32X.59X.50           |
| 48      | 584282701 | Spring Helical Comp          |
| 49      | 584289501 | Nut,Hex 5/16-24 Nylon Insert |
| 120     | 584282601 | Puck.Brake                   |
| 121     | 584282501 | Rotor.Brake                  |
| 122     | 584289601 | Plate.Puck                   |
| 124     | 584289701 | Yoke.Brake                   |
| 125     | 584287501 | Pin.Brake.31X.73 Plated      |
| 126     | 584282401 | Spacer.26X.57X.87            |
| 127     | 584281401 | Screw 1/4-20X2.0 W/Patch     |
| 128     | 584281501 | Screw 1/4-20X1 Patch         |
| 129     | 584282201 | Spring, Comp Brake Anti Drag |
| 130     | 584282301 | Arm.Brake                    |
| 131     | 584287401 | Washer .34X.88X.06           |
| 132     | 584281701 | Nut.Castle 5/16-24 Pl        |
| 133     | 584286601 | Pin.Cotter 3/32X3/4          |
| 134     | 584281901 | Spring Brake Arm Bias        |
| 150     | 584282001 | Fan 7", 10 Blade             |
| 151     | 584286101 | Pulley 4.0                   |
| 152     | 584282101 | Nut,Hex Ja 1/2-20 W Patch    |
| 153     | 584287201 | Flange Pulley 4.895          |
| 154     | 584287301 | Hub Pulley                   |
| 180     | 584281601 | Spring,Clip Housing Thrust   |
| 203     | 584285201 | Kit,E-Tank                   |
| 204     | 584285002 | Kit,Fan & Pulley             |
| 205     | 584285001 | Kit, Seal                    |

**NOTE:** All component dimensions give in U.S. inches  
1 inch = 25.4 mm

# TRACTOR- -MODEL NO. 917.990380

## BRIGGS & STRATTON ENGINE - - MODEL NUMBER 31R777, TYPE NUMBER 0003-B1

48 SHORT BLOCK

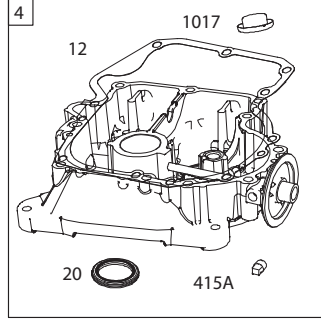
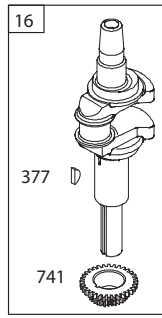
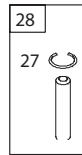
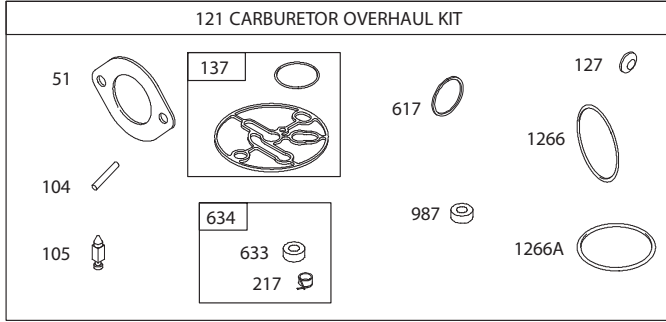
1036 EMISSIONS LABEL

1058 OPERATOR'S MANUAL

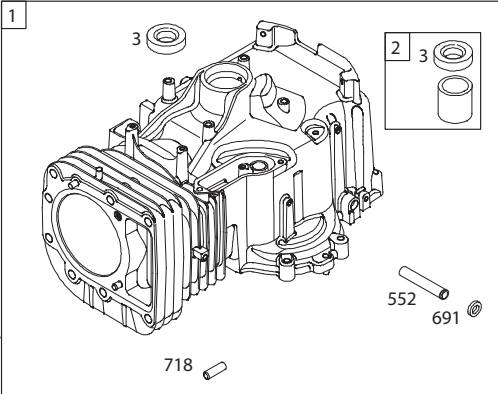
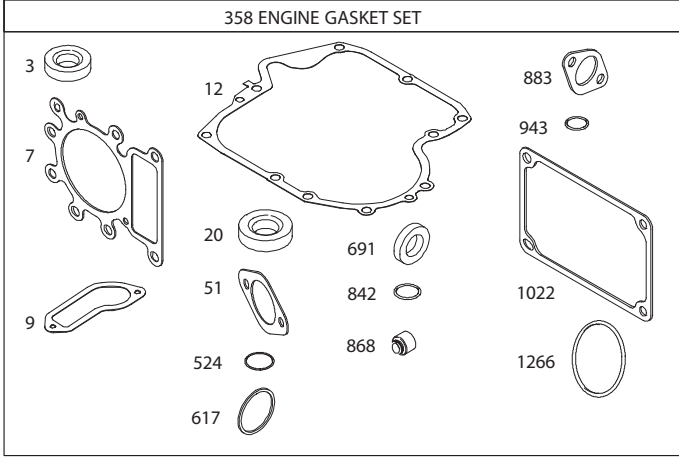
1329 REPLACEMENT ENGINE

1330 REPAIR MANUAL

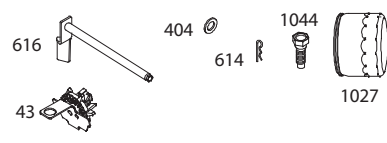
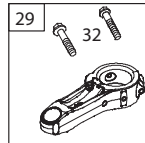
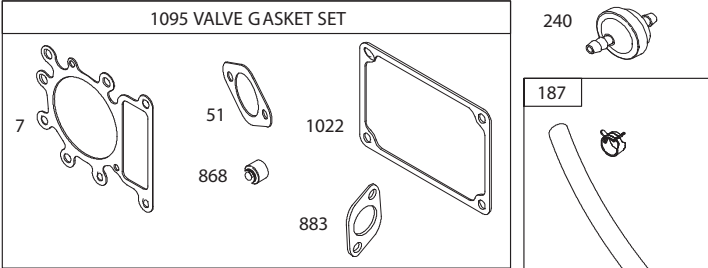
### 121 CARBURETOR OVERHAUL KIT



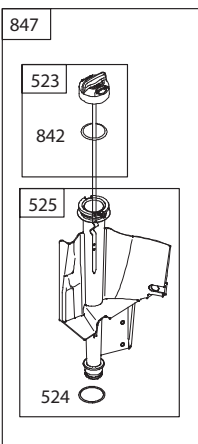
### 358 ENGINE GASKET SET



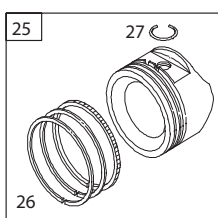
### 1095 VALVE GASKET SET



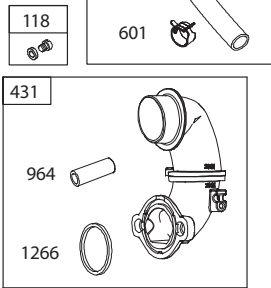
### 847



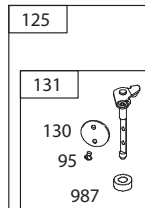
### 25



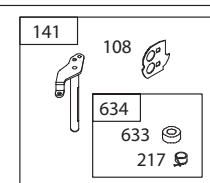
### 118



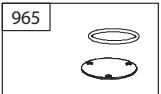
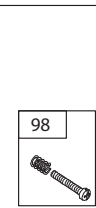
### 125



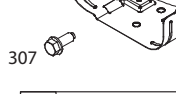
### 141



### 98



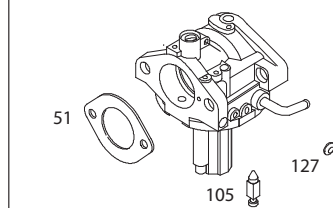
### 307



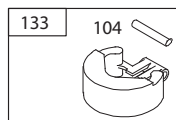
### 758



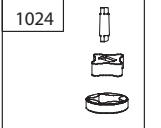
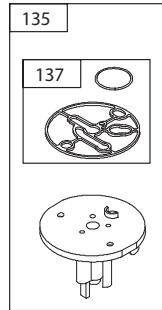
### 51



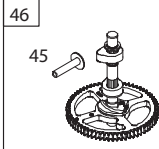
### 133



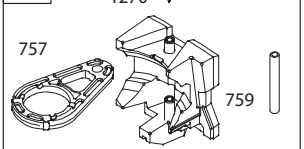
### 135



### 46



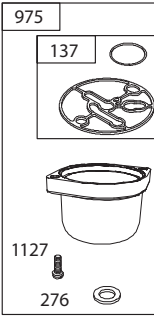
### 758



### 947



### 975

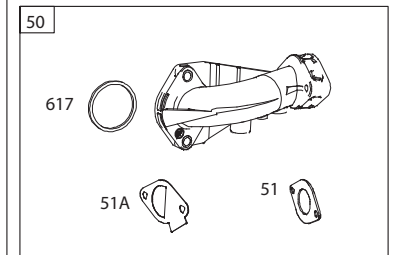
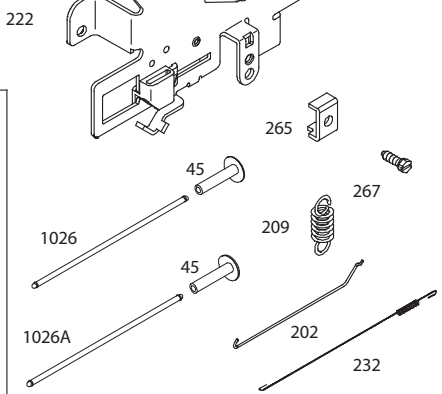
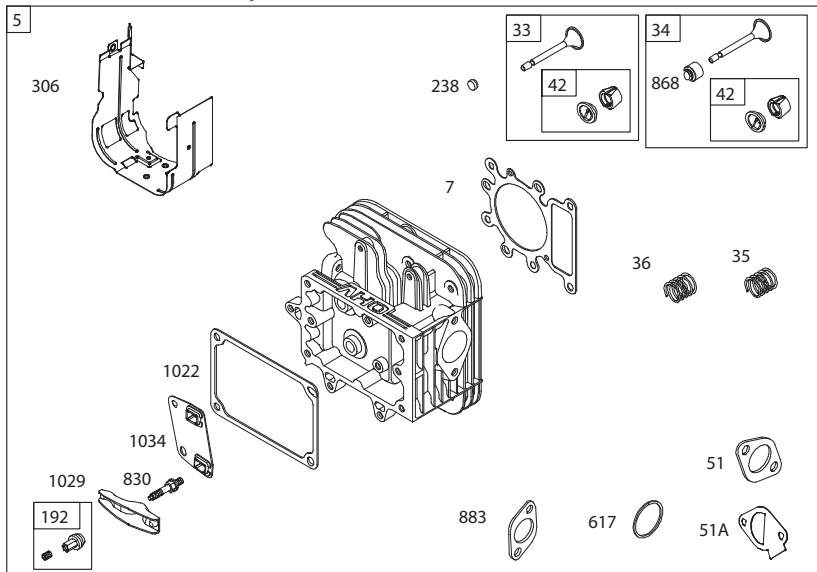
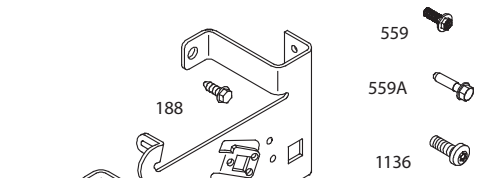
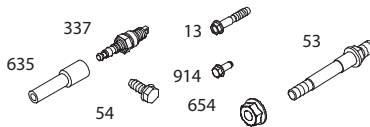
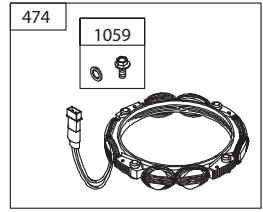
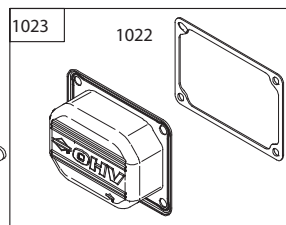
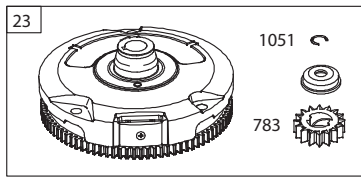
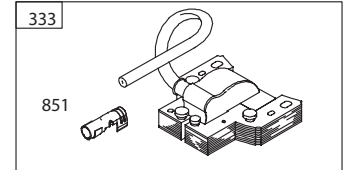
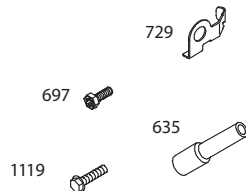
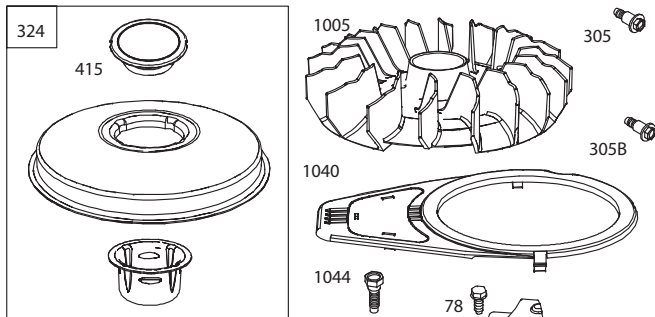
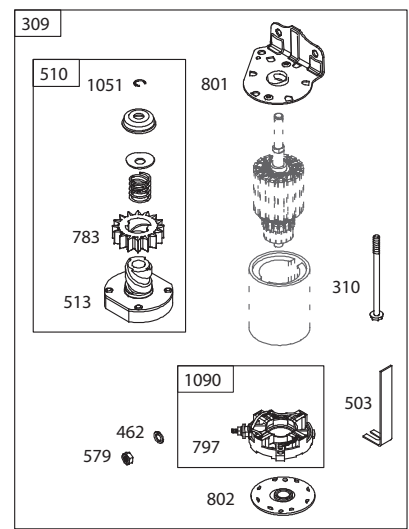
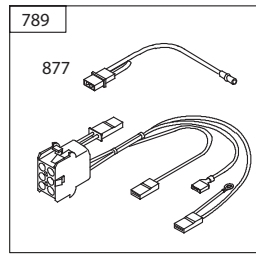
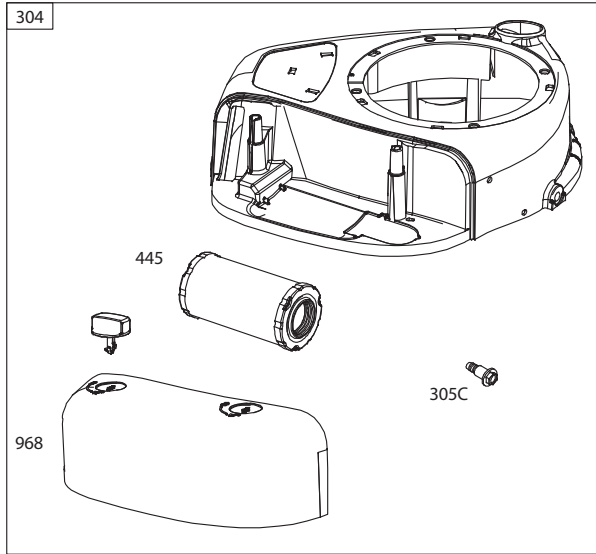


### 117



# TRACTOR- -MODEL NO. 917.990380

BRIGGS & STRATTON ENGINE - - MODEL NUMBER 31R777, TYPE NUMBER 0003-B1





## TRACTOR- -MODEL NO. 917.990380

### BRIGGS & STRATTON ENGINE - - MODEL NUMBER 31R777, TYPE NUMBER 0003-B1

| KEY NO. | PART NO. | DESCRIPTION                                  | KEY NO. | PART NO. | DESCRIPTION                        |
|---------|----------|--|---------|----------|------------------------------------|
| 1       | 796010   | Cylinder Assembly                            | 137     | 698781   | Gasket-Float Bowl                  |
| 2       | 797673   | Bushing/Seal Kit (Magneto Side)              | 141     | 592937   | Kit-Choke Shaft                    |
| 3       | 391086s  | Seal-Oil (Magneto Side)                      | 187     | 791766   | Line-Fuel (Cut to Required Length) |
| 4       | 592849   | Sump-Engine                                  | 188     | 691693   | Screw (Control Bracket)            |
| 5       | 796026   | Head-Cylinder                                | 192     | 691986   | Adjuster-Rocker Arm                |
| 7       | 796584   | Gasket-Cylinder Head                         | 202     | 691841   | Link-Mechanical Governor           |
| 9       | 697109   | Gasket-Breather                              | 209     | 796260   | Spring-Governor (Green)            |
| 11      | 794683   | Tube-Breather                                | 217     | 695409   | Spring-Choke Return                |
| 12      | 697110   | Gasket-Crankcase                             | 222     | 694042   | Bracket-Control                    |
| 13      | 592244   | Screw (Cylinder Head)                        | 227     | 691374   | Lever-Governor Control             |
| 15      | 690946   | Plug-Oil Drain                               | 232     | 691842   | Spring-Governor Link               |
| 16      | 591762   | Crankshaft                                   | 238     | 691843   | Cap-Valve                          |
| 20      | 795387   | Seal-Oil (PTO Side)                          | 240     | 394358s  | Filter-Fuel                        |
| 22      | 692125   | Screw (Crankcase Cover/Sump)                 | 265     | 691024   | Clamp-Casing                       |
| 23      | 591759   | Flywheel                                     | 267     | 794904   | Screw (Casing Clamp)               |
| 24      | 591757   | Key-Flywheel (Steel)                         | 276     | 695410   | Washer-Sealing                     |
| 25      | 796172   | Piston Assembly (Standard)                   | 304     | 591642   | Blower Housing                     |
|         | 796173   | Piston Assembly (.020" Oversize)             | 305     | 697102   | Screw (Blower Housing)             |
| 26      | 791936   | Ring Set (Standard)                          |         |          | (1/4-20x1.21)                      |
|         | 792649   | Ring Set (.020" Oversize)                    | 305B    | 795891   | Screw (Blower Housing)             |
| 27      | 698469   | Lock-Piston Pin                              |         |          | (#10-16x.43)                       |
| 28      | 796007   | Pin-Piston                                   | 305C    | 799370   | Screw (Blower Housing)             |
| 29      | 794122   | Rod-Connecting                               |         |          | (1/4-20x.90)                       |
| 32      | 791118   | Screw (Connecting Rod)                       | 306     | 592777   | Shield-Cylinder                    |
| 33      | 792868   | Valve-Exhaust                                | 307     | 691693   | Screw (Cylinder Shield)            |
| 34      | 791935   | Valve-Intake                                 | 309     | 693551   | Motor-Starter                      |
| 35      | 691279   | Spring-Valve (Intake)                        | 310     | 690323   | Screw (Starter Motor)              |
| 36      | 691279   | Spring-Valve (Exhaust)                       | 324     | 796308   | Screen/Cup Assembly                |
| 37      | 697352   | Guard-Flywheel                               | 333     | 592841   | Armature-Magneto                   |
| 42      | 499586   | Keeper-Valve                                 | 334     | 691061   | Screw (Magneto Armature)           |
| 43      | 691968   | Slinger-Governor/Oil                         | 337     | 792015   | Plug-Spark                         |
| 45      | 690564   | Tappet-Valve                                 | 358     | 796187   | Gasket Set-Engine                  |
| 46      | 793880   | Gear-Cam                                     | 377     | 691639   | Key-Woodruff                       |
| 48      | N/A      | Short Block (Not Available at This Printing) | 404     | 691691   | Washer (Governor Crank)            |
|         |          |  | 415     | 794129   | Plug (Cover/Retainer)              |
| 50      | 592842   | Manifold-Intake                              | 415A    | 794903   | Plug                               |
| 51      | 692137   | Gasket-Intake                                | 431     | 797901   | Elbow-Intake                       |
| 51A     | 796081   | Gasket-Intake                                | 445     | 591334   | Filter-Air Cleaner Cartridge       |
| 53      | 591260   | Stud (Carburetor)                            | 462     | 691261   | Washer (Starter Cable)             |
| 54      | 691148   | Screw (Intake Manifold)                      | 474     | 592831   | Alternator                         |
| 78      | 691693   | Screw (Flywheel Guard)                       | 503     | 691532   | Strap-Starter                      |
| 95      | 690718   | Screw (Throttle Valve)                       | 505     | 691251   | Nut (Governor Control Lever)       |
| 98      | 695408   | Kit-Idle Speed                               | 510     | 693699   | Drive-Starter                      |
| 104     | 694918   | Pin-Float Hinge                              | 513     | 692024   | Clutch-Drive                       |
| 105     | 696136   | Valve-Float Needle                           | 523     | 699908   | Dipstick                           |
| 108     | 695419   | Valve-Choke                                  | 524     | 691032   | Seal-Dipstick Tube                 |
| 117     | 699457   | Jet-Main (Standard)                          | 525     | 697184   | Tube-Dipstick                      |
| 118     | 695415   | Jet-Main (High Altitude) (5000/9000 Feet)    | 552     | 697144   | Bushing-Governor Crank             |
|         |          |  | 559     | 693675   | Screw (Remote Choke Stop)          |
| 121     | 796184   | Kit-Carburetor Overhaul                      |         |          | (6 Lobe)                           |
| 125     | 591731   | Carburetor                                   | 559A    | 697561   | Screw (Remote Choke Stop)          |
| 127     | 690727   | Plug-Welch                                   |         |          | (#8-32x.37)                        |
| 130     | 699500   | Valve-Throttle                               | 562     | 691119   | Screw (Governor Control Lever)     |
| 131     | 699501   | Kit-Throttle Shaft                           | 579     | 691029   | Nut (Starter Cable)                |
| 133     | 694914   | Float-Carburetor                             | 584     | 794682   | Cover-Breather Passage             |
| 135     | 698780   | Tube-Fuel Transfer                           | 601     | 791850   | Hose-Clamp (Green)                 |





---

# SERVICE NOTES

---

---

# SERVICE NOTES

---

### **LIMITED WARRANTY ON CRAFTSMAN RIDING EQUIPMENT**

For two (2) years from the date of purchase, if this Craftsman Riding Equipment is maintained, lubricated and tuned up according to the instructions in the owner's manual, Sears will repair or replace free of charge any parts that are found to be defective in material or workmanship according to the guidelines of coverage listed below. Sears will also provide free labor for these applicable warranted parts for the two full years. During the first 30 days of purchase, there will be no charges to service the product at your home for issues covered by this warranty. (See exclusions below). For your convenience, IN HOME warranty service will still be available after the first 30 days of purchase, but a trip charge will apply. This charge will be waived if the Craftsman product is dropped off at an authorized Sears location. For the nearest authorized Sears location, please call 1-800-4-MY-HOME®. This warranty applies only while this product is within the United States.

This Warranty does not cover:

- Expendable items which become worn during normal use, including but not limited to blades, spark plugs, air cleaners, belts, and oil filters.
- Standard Maintenance Servicing, oil changes, or tune-ups
- Tire replacement or repair caused by punctures from outside objects, such as nails, thorns, stumps, or glass.
- Repairs necessary because of operator abuse, including but not limited to, damage caused by towing objects beyond the capability of the riding equipment, impacting objects that bend the frame or crankshaft, or over-speeding the engine.
- Repairs necessary because of operator negligence, including but not limited to, electrical and mechanical damage caused by improper storage, failure to use the proper grade and amount of engine oil, failure to keep the deck clear of flammable debris, or failure to maintain the equipment according to the instructions contained in the owner's manual.
- Engine (fuel system) cleaning or repairs caused by fuel determined to be contaminated or oxidized (stale). In general, fuel should be used within 30 days of its purchase date.
- Normal deterioration and wear of the exterior finishes, or product label replacement.
- Riding equipment used for commercial or rental purposes.

### **LIMITED WARRANTY ON BATTERY**

For ninety (90) days from date of purchase, if any battery included with this riding equipment proves defective in material or workmanship and our testing determines the battery will not hold a charge, Sears will replace the battery at no charge. During the first 30 days of purchase, there will be no charges to replace the battery at your HOME. After the first 30 days, for your convenience, IN-HOME warranty service will still be available but a trip charge will apply. This charge will be waived if the Craftsman product is dropped off at an authorized Sears location. For the nearest authorized Sears location, please call 1-800-4-MY-HOME®.

This battery warranty applies only while this product is within the United States.

This warranty gives you specific legal rights, and you may also have other rights, which vary, from state to state.

Sears Brands Management Corporation, Dept.817WA, Hoffman Estates, IL 60179

