

REPAIR PARTS MANUAL
MODEL NO. 991651
Lawn Tractor



HOW TO USE THIS MANUAL

This manual is designed to provide the customer with a means to identify the parts on his/her tractor when ordering repair parts. The illustrations may or may not represent the actual assemblies; therefore, it is not recommended to use this manual as a guide to assemble or disassemble the tractor. Some hardware and parts are drawn larger in order to more readily identify them.

Each tractor has its own model number.

The model number for your tractor can be found on the fender under the seat.

When ordering parts, always give the following information:

- Product - "Tractor"
- Model Number - "991651"
- Part Number
- Part Description

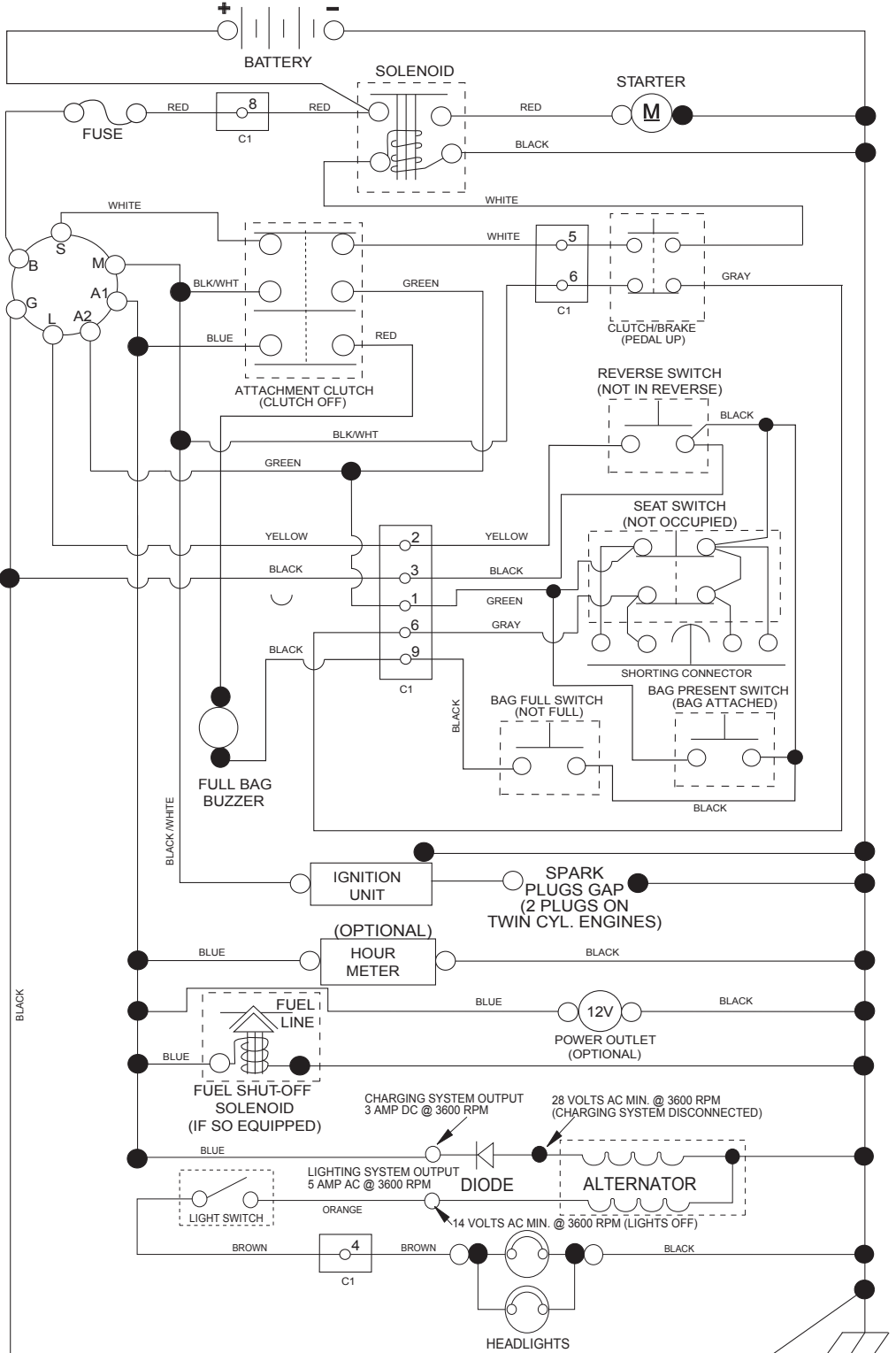
TABLE OF CONTENTS

SCHEMATIC	3
ELECTRICAL.....	4-5
CHASSIS	6-7
DRIVE.....	8-9
ENGINE.....	10-11
STEERING	12-13
MOWER DECK	14-15
MOWER LIFT.....	16
SEAT	17
BAGGER.....	18-19
DECALS.....	20
TRANSAXLE BREAKDOWN	22-23
ENGINE BREAKDOWN.....	24-27
WARRANTY.....	BACK COVER

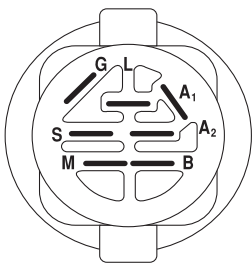
TRACTOR- -MODEL NO. 917.991651

SCHEMATIC

SCH17

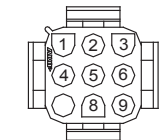


NOTE
YOUR TRACTOR IS EQUIPPED WITH A SPECIAL ALTERNATOR SYSTEM. THE LIGHTS ARE NOT CONNECTED TO THE BATTERY, BUT HAVE THEIR OWN ELECTRICAL SOURCE. BECAUSE OF THIS, THE BRIGHTNESS OF THE LIGHTS WILL CHANGE WITH ENGINE SPEED. AT IDLE THE LIGHTS WILL DIM. AS THE ENGINE SPEED IS INCREASED, THE LIGHTS WILL BECOME THEIR BRIGHTEST.

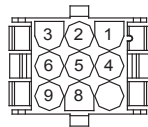


IGNITION SWITCH

POSITION	CIRCUIT	"MAKE"
OFF	M+G+A1	
RUN/OVERRIDE	B+A1	
RUN	B+A1	L+A2
START	B+S+A1	



CHASSIS HARNESS CONNECTOR (C1) (MATING SIDE)



DASH HARNESS CONNECTOR (C1) (MATING SIDE)

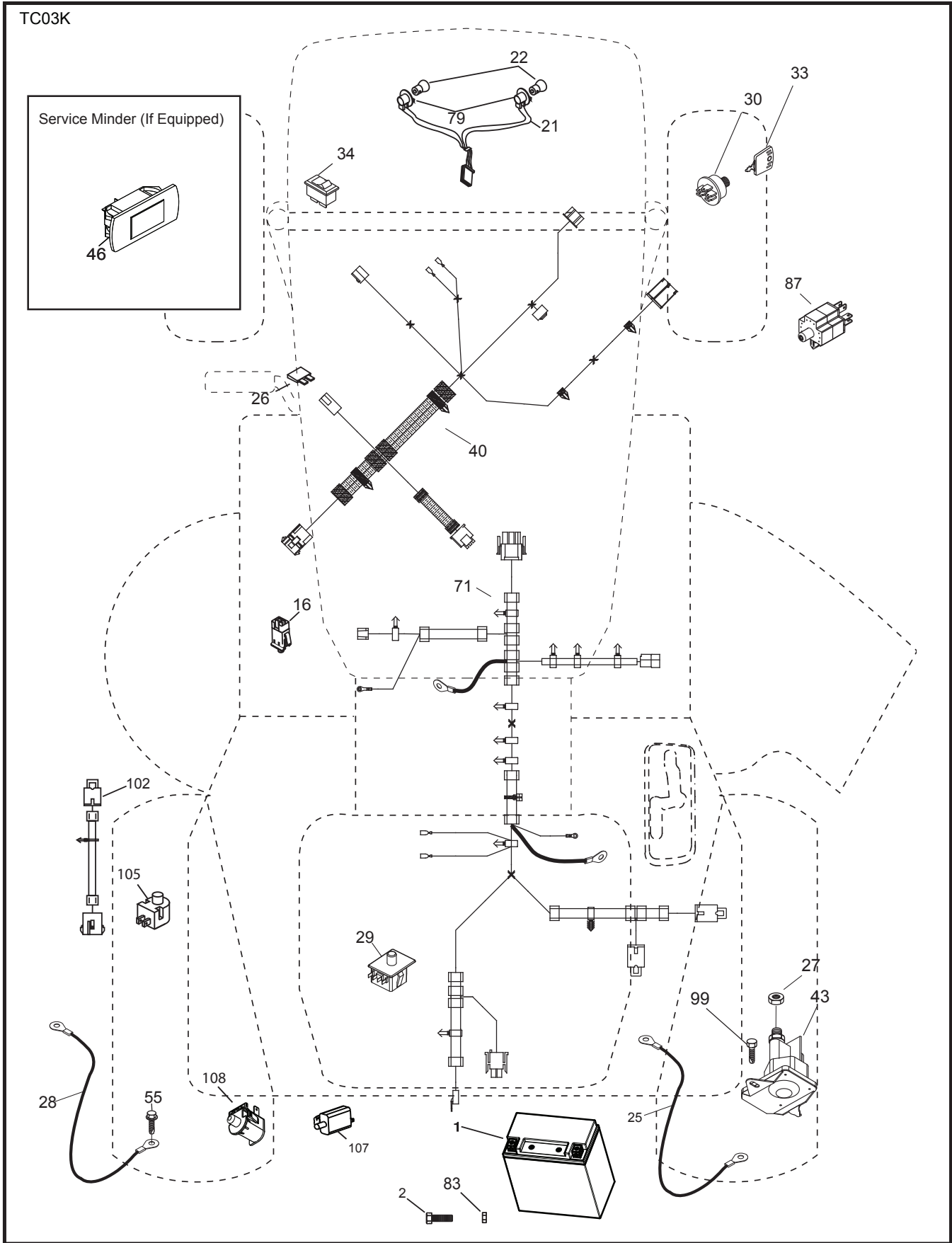
WIRING INSULATED CLIPS
NOTE: IF WIRING INSULATED CLIPS WERE REMOVED FOR SERVICING OF UNIT, THEY SHOULD BE RE-INSTALLED TO PROPERLY SECURE YOUR WIRING.

NON-REMOVABLE CONNECTIONS

REMOVABLE CONNECTIONS

TRACTOR- -MODEL NO. 917.991651

ELECTRICAL



TRACTOR- -MODEL NO. 917.991651

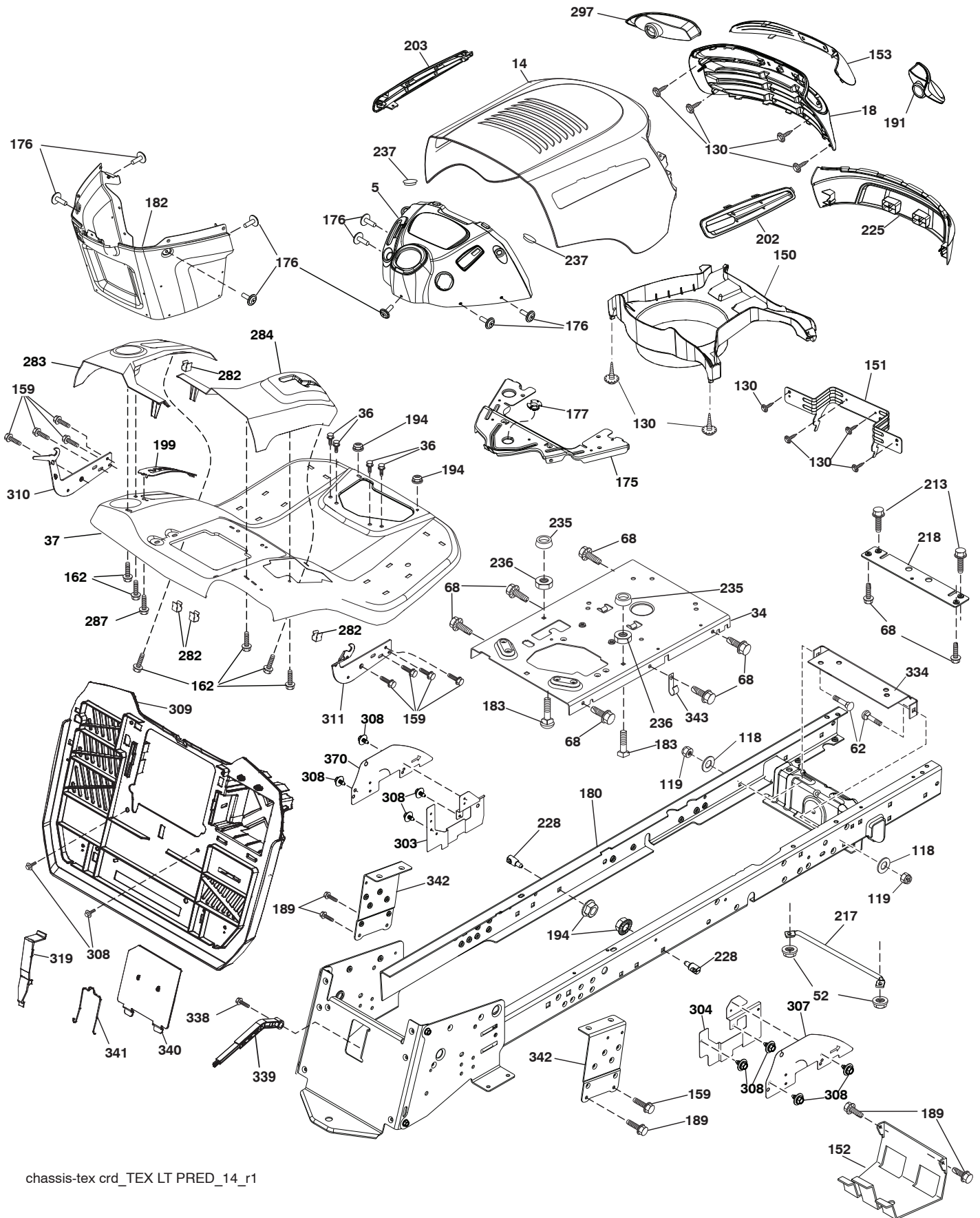
ELECTRICAL

KEY NO.	PART NO.	DESCRIPTION
1	437157	Battery
2	M743506012	Screw Hex Hd Cap M6 x 1.12mm
16	176138	Switch Interlock
21	400252	Harness Asm Light w/4152J
22	4152J	Bulb Light #1156
25	581489801	Cable Battery 8 AWG
26	175158	Fuse
27	73510400	Nut Keps Hex 1/4-20 unc
28	581489802	Cable Ground 8 AWG
29	192749	Switch Seat
30	193350	Switch Ignition
33	411934	Key/Chain
34	110712X	Switch Light
40	421002	Harness Ignition Dash
43	192507	Solenoid
55	17060512	Screw 5/16-18 x 3/4
71	440820	Harness Chassis
79	175242	Socket Asm.
83	436774	Nut Square M6 x 1 x 8.5 x 11mm
87	421060	Switch Railmount
99	17000512	Screw 5/16-18 x 3/4
102	404454	Harness Pigtail
105	407568	Switch Reverse
107	180379	Switch Full Bagger Indicator
108	421062	Switch Snapmount

NOTE: All component dimensions given in U.S. inches.
1 inch = 25.4 mm.

TRACTOR- -MODEL NO. 917.991651

CHASSIS AND ENCLOSURES



chassis-tex crd_TEX LT PRED_14_r1

TRACTOR- -MODEL NO. 917.991651

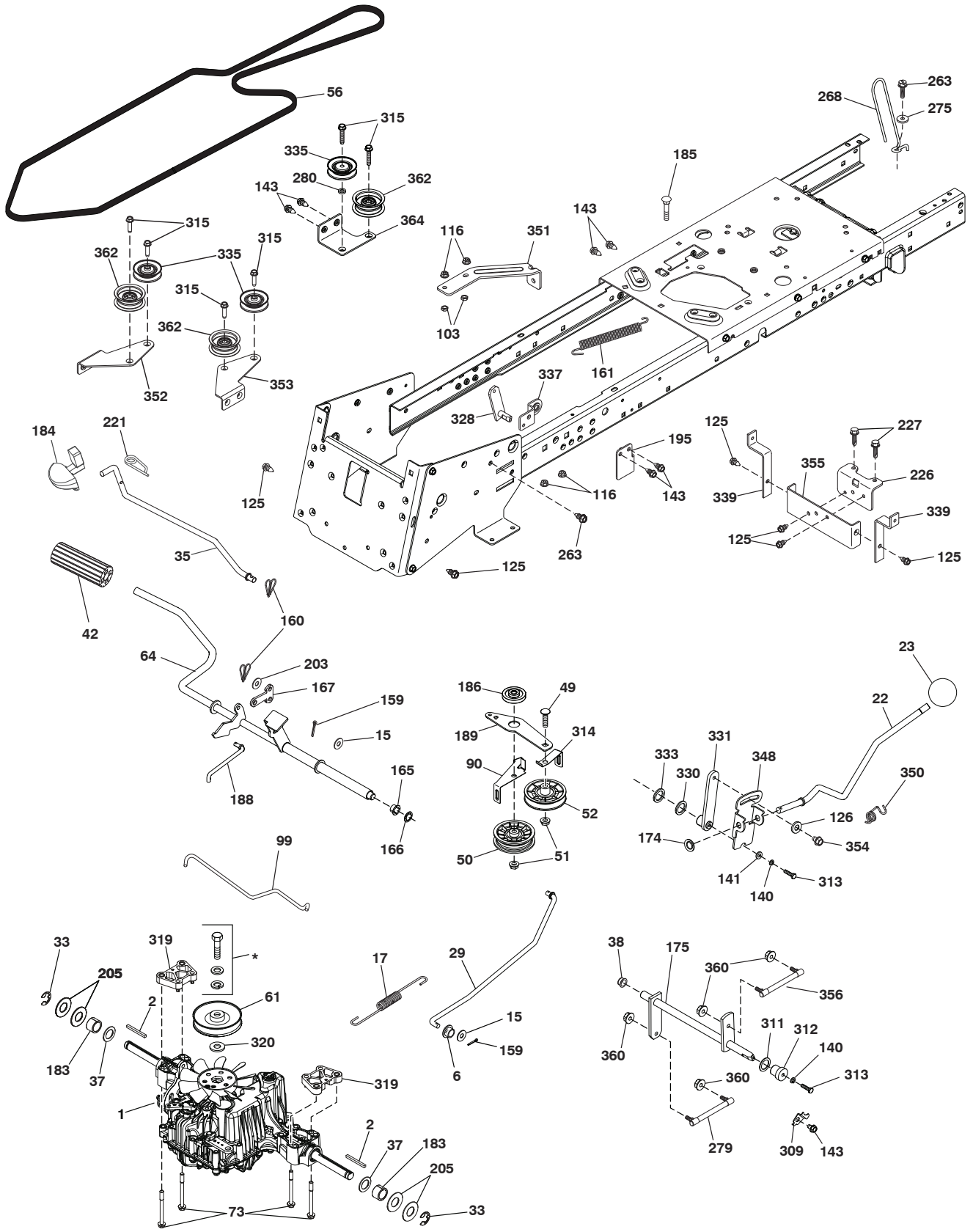
CHASSIS AND ENCLOSURES

KEY NO.	PART NO.	DESCRIPTION	KEY NO.	PART NO.	DESCRIPTION
5	408874X428	Dash	217	409167	Rod Pivot Hood
14	198416X615	Hood	218	196395	X-Piece Hood Stop
18	580427601	Grille	225	400549X615	Bumper Grille
34	580910901	Plate Engine	228	195161	Stud Fastener
36	17060512	Screw 5/16-18 x 3/4	235	406129	Spacer Fender
37	436953X615	Fender	236	73930500	Nut Center Lock 5/16-18 unc
52	73680500	Nut Crownlock 5/16-18	237	403704	Plug Mount Cargo
62	72110608	Bolt 3/8-16 x 1 Gr. 5	282	414110	Clip Retainer
68	17490508	Screw Thdrol. 5/16-18 x 1/2	283	438065X428	Console Deck Lift
118	19131316	Washer 13/32 x 13/16 x 16 Ga.	284	439323X428	Console Shift RH
119	73680600	Nut Crownlock CRD	287	17600406	Screw Hex Washead. 1/4-20 x 3/8
130	416358	Screw #10 x .750 BOS Thread	297	401827	Insert Reflective LH
150	400267	Air Duct	303	587493102	Shield LH
151	187568	Bracket Pivot	304	587493302	Shield RH
152	199535	Shield Browning	307	587494501	Shield Upper
153	400550X599	Lens	308	171877	Bolt 5/16-18 unc x 3/4
159	17000612	Screw 3/8-16 x 3/4	309	436625X428	Backplate
162	142432	Screw Hex Wsh. Hi-Lo 1/4 x 1/2 unc	310	446636	Bracket Hangbar Bag LH
175	199472	Crossmember	311	446637	Bracket Hangbar Bag RH
176	400776	Screw 10-24 x 5/8	319	174662	Bracket Actuator Bagger
177	195228	Bushing Steering	334	442537	Bracket Engine
180	581187101	Chassis	338	436640	Bolt Shoulder
182	407176	Dash Lower	339	436641	Lever Bagger Full
183	74520520	Bolt 5/16-18 x 1-1/4	340	436637X428	Door Battery Tray
189	17000512	Screw 5/16-18 x 3/4	341	582060801	Latch Batter Tray
191	416502	Insert Reflective RH	342	435938	Support Fender
194	73900500	Nut Lock Hex Flange 5/16-18	343	440749	Clip
199	418739	Plate Deck Lift	370	587527401	Shield Upper RH Endshift
202	580427401	Vent Side Hood RH			
203	580427501	Vent Side Hood LH			
213	74760512	Bolt Hex HD 5/16-18 unc 3/4			

NOTE: All component dimensions given in U.S. inches.
1 inch = 25.4 mm.

TRACTOR- -MODEL NO. 917.991651

DRIVE



drive-tex CRD_K46_fender_8_r1

TRACTOR- -MODEL NO. 917.991651

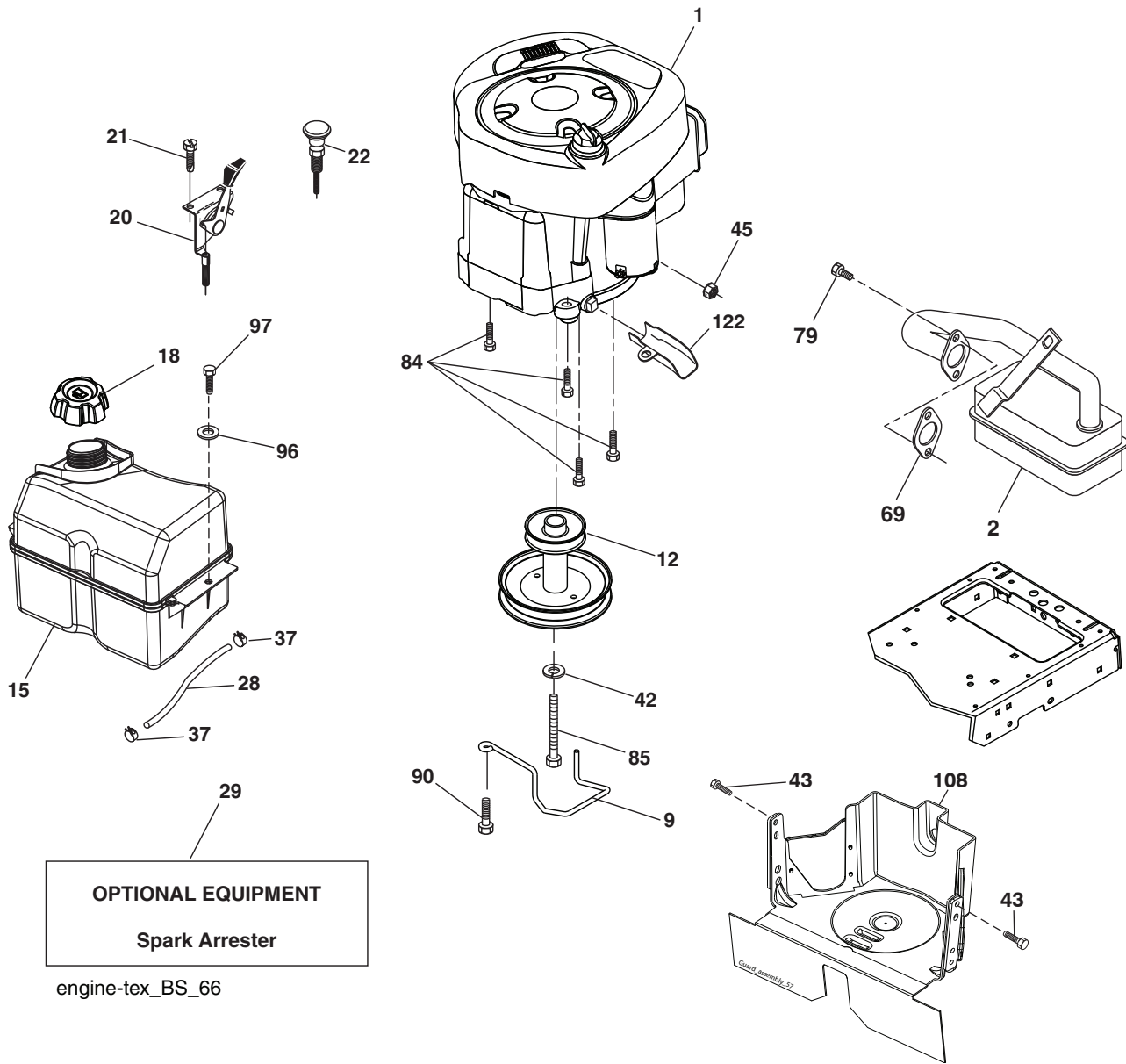
DRIVE

KEY NO.	PART NO.	DESCRIPTION	KEY NO.	PART NO.	DESCRIPTION
1	---	Transaxle, Tufftorq K46DC (448355) (Order parts from transaxle manufacturer.)	188	582217001	Link Clutch Ground Drive, Long
			189	433611	Bellcrank Ground Drive
			195	580456901	Bracket Rod Brake
2	123583X	Key Square	203	19111116	Washer 11/32 x 11/16 x 16
6	124208X	Bushing Snap	205	121748X	Washer 25/32 x 1-5/8 x 16 Ga.
15	19131316	Washer 13/32 x 13/16 x 16 Ga.	221	403187	Retainer Spring
17	436227	Spring, Brake	226	401564	Bracket Mount Torque
22	443246	Rod Shift	227	17490512	Screw Thdrol 5/16-18 x 3/4
23	106933X	Knob	263	17000612	Screw Thdr 3/8-16 x 3/4
29	435881	Rod, Brake	268	182402	Guard Muffler
33	12000001	Ring E	275	19131614	Washer 13/32 x 1 x 14 Ga.
35	401031	Rod, Brake, Park	279	444283	Link Shift
37	188967	Washer Hardened	280	19111012	Washer 11/32 x 5/8
38	169613	Nyliner Snap In	309	165581	Plate Fstnr. Cross
42	8883R	Cover, Foot Pedal	311	169845	Washer Nylon
49	72110614	Bolt 3/8-16 x 1 3/4	312	165614	Hub Tapered
50	194327	Pulley Idler Flat	313	74780416	Bolt Hex Fin 1/4-20 unc x 1 Gr. 5
51	73900600	Lock Nut 3/8-16	314	444713	Keeper Belt
52	194326	Idler V-Groove	315	17580520	Screw Thdrol 5/16-18 x 1.25
56	441836	V-Belt, Drive	319	436794	Spacer Transaxle
61	437788	Pulley Transaxle	320	187690	Washer Spacer
64	196200	Shaft Asm. Pedal Brake Control	328	435758	Shaft Shift Front
73	74490556	Bolt Hex 5/16-18 x 2-1/2 G5	330	169593	Washer Nyliner
90	443605	Keeper Belt Clutching	331	443606	Hub Shift
99	443947	Rod Spring Bypass	333	170868	Washer Spring Wave
103	73350500	Nut Hex Jam 5/16-18 unc	335	199534	Idler V Pulley Grnd. Dr.
116	73900500	Nut Lock Hex Flange 5/16-18	337	435937	Bracket Support Shift
125	17000512	Screw 5/16-18 x 3/4	339	436867	Strap Torque
126	166002	Washer Srrtd. 5/16 ID x 1 x .125	348	443607	Arm Clevis Rod
140	10040400	Washer Lock 1/4	350	445020	Spring Torsion
141	19091210	Washer 9/32 x 3/4 x 10 Ga.	351	436998	Bracket Deck Sway
143	17490508	Screw Thdrol 5/16-18 x 1/2	352	435819	Bracket Idler
159	76020412	Pin Cotter 1/8 x 3/4	353	436577	Bracket Idler RH
160	169484	Retainer Clip	354	17490510	Screw 5/16-18 x 5/8
161	105709X	Spring, Return, Clutch	355	435669	Bracket
165	196212	Nyliner	356	446441	Link Shift Cross Shaft
166	429164	Nut Push .625	360	444714	Nut 5/16-24
167	405257	Latch Brake Parking	362	436812	Idler Flat
174	197289	Nut Push	364	443032	Bracket Idler
175	441823	Shaft Asm Shift			
183	137057	Spacer Axle			
184	199996X428	Handle Parking Brake			
185	72110622	Bolt 3/8-16 x 2-3/4			
186	194321	Spacer Retainer			

NOTE: All component dimensions given in U.S. inches
1 inch = 25.4 mm

TRACTOR- -MODEL NO. 917.991651

ENGINE



TRACTOR- -MODEL NO. 917.991651

ENGINE

KEY NO.	PART NO.	DESCRIPTION
1	— — — —	Engine Briggs Model 31Q507-0010-H1 (586738401) (Order parts from engine manufacturer.)
2	137352	Muffler Exhaust B&S LT
9	584908001	Keeper Belt Eng
12	586478501	Pulley Engine
15	407551	Tank Fuel
18	430220	Cap Asm Fuel
20	176636X428	Control Throttle
21	416358	Screw #10 x 0.750 BOS Thread
22	187771X428	Control Choke
28	137040	Line Fuel 20"
29	137180	Arrestor Spark
37	123487X	Clamp Hose Blk
42	10040700	Washer Lock Hvy HLCL Spr 7/16
43	17060516	Screw 5/16-18 x 1 smgl tap/R
45	73510400	Nut Keps 1/4-20 unc
69	165291	Gasket 1 313 Id Tin Plated
79	192334	Screw Socket 5/16-18 x 3/4
84	17060620	Screw 3/8-16 x 1-1/4
85	173937	Bolt Hex 7/16-20 x 4 Gr5-1.5 THR
90	17000616	Screw 3/8-16 x 1
96	19091416	Washer 9/32 x 7/8 x 16 Ga.
97	17670412	Screw Hexwsh Thdrol 1/4-20 x 3/4
108	587179502	Cover Pulley Engine w/SHLD
122	421922	Extension Drain Oil

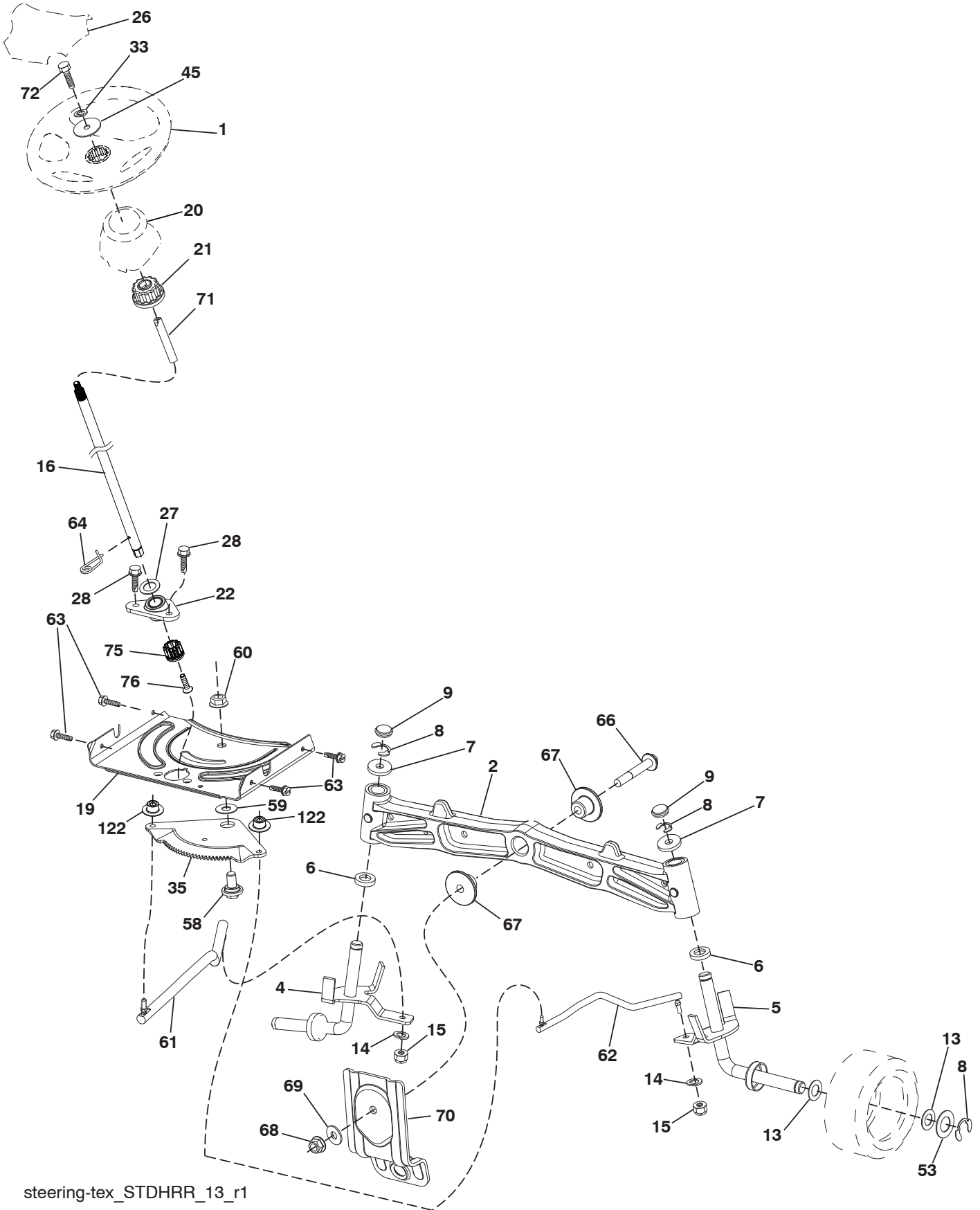
NOTE: All component dimensions given in U.S. inches
1 inch = 25.4 mm

Engine Power Rating Information

The gross power rating for individual gas engine models is labeled in accordance with SAE (Society of Automotive Engineers) code J1940 (Small Engine Power & Torque Rating Procedure), and rating performance has been obtained and corrected in accordance with SAE J1995 (Revision 2002-05). Torque values are derived at 3060 RPM; horsepower values are derived at 3600 RPM. Actual gross engine power will be lower and is affected by, among other things, ambient operating conditions and engine-to-engine variability. Given both the wide array of products on which engines are placed and the variety of environmental issues applicable to operating the equipment, the gas engine will not develop the rated gross power when used in a given piece of power equipment (actual "on-site" or net power). This difference is due to a variety of factors including, but not limited to, accessories (air cleaner, exhaust, charging, cooling, carburetor, fuel pump, etc.), application limitations, ambient operating conditions (temperature, humidity, altitude), and engine-to-engine variability. Due to manufacturing and capacity limitations, Briggs & Stratton may substitute an engine of higher rated power for this Series engine.

TRACTOR- -MODEL NO. 917.991651

STEERING ASSEMBLY



steering-tex_STDHRR_13_r1

TRACTOR- -MODEL NO. 917.991651

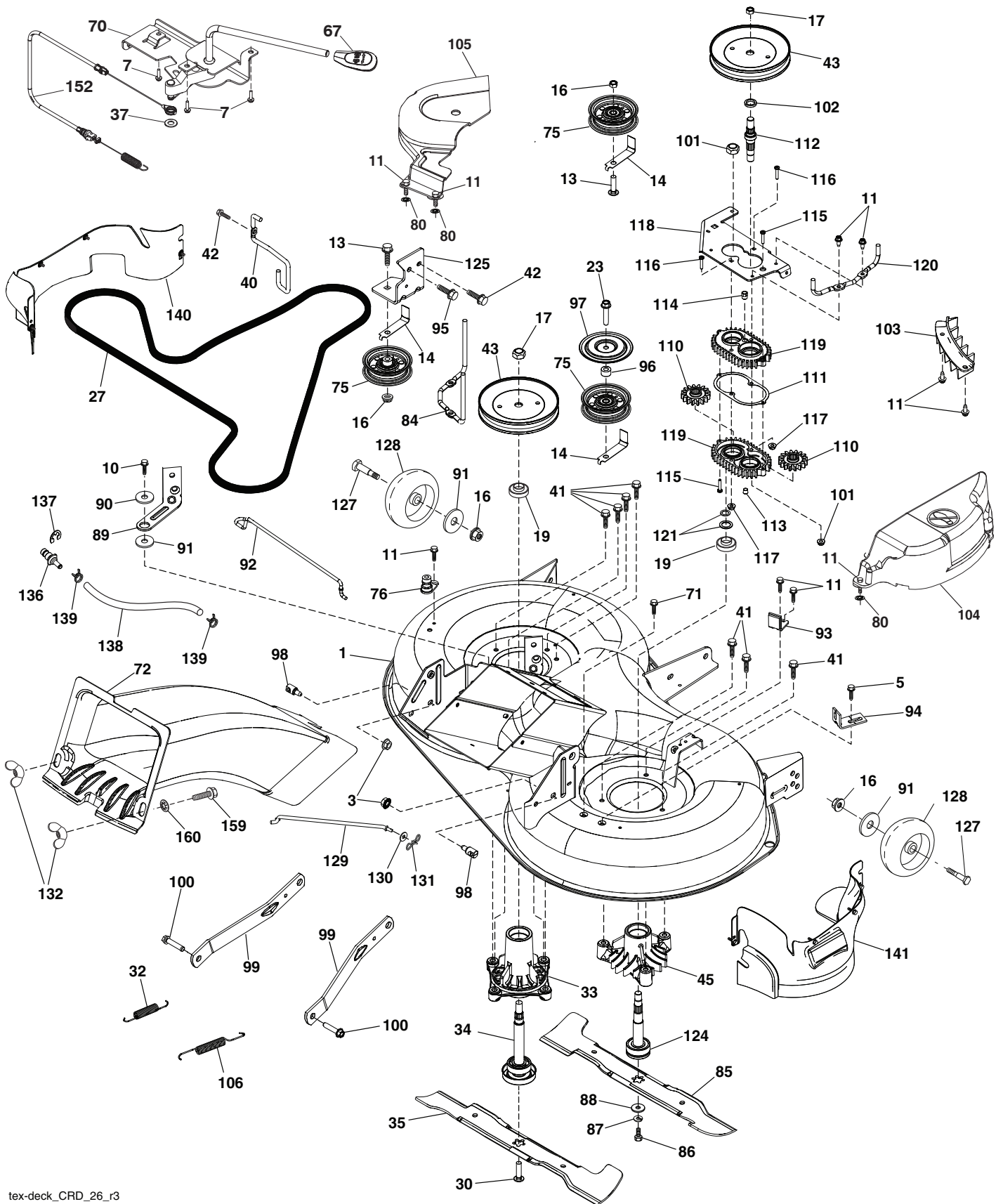
STEERING ASSEMBLY

KEY NO.	PART NO.	DESCRIPTION
1	414851X428	Wheel, Steering
2	195968	Axle Asm., Front
4	403087	Spindle Asm., LH
5	403088	Spindle Asm., RH
6	6266H	Bearing, Race Thrust Harden
7	121748X	Washer 25/32 x 1-5/8 x 16 Ga.
8	12000029	Ring, Clip #T5304-75
9	184946X667	Cap, Spindle
13	121749X	Washer 25/32 x 1-1/4 x 16 Ga.
14	10040600	Washer Lock Hvy Hlcl Spr 3/8
15	73540600	Nut, Crown Lock 3/8-24 unf
16	585869202	Shaft Steering
19	194729	Plate Steering
20	400803X428	Boot, Steering
21	186737	Adapter, Wheel Steering
22	585029802	Support Strg. Lower
26	414852X428	Insert, Wheel Steering
27	19211616	Washer 21/32 x 1 x 16 Ga.
28	17000612	Screw 3/8-16 x 3/4
33	10040500	Washer Lock 5/16
35	194732	Gear, Sector Plate
45	19113812	Washer 11/32 x 2-3/8 x 12 Ga.
53	188967	Washer Hardened .793 x 1.637 x .060
58	194747	Bolt Shoulder Sector Pivot CFM
59	194748	Washer Thrust Sector Steering
60	73971000	Nut Flange Lock 5/8-11
61	194740	Draglink, LH
62	194741	Draglink, RH
63	17000512	Screw 5/16-18 x 3/4
64	199849	Retainer Clip Spring Steering
66	71020748	Bolt Hex Fghd 7/16-14 x 3 Serr
67	194737	Bushing PM Front Axle
68	73900700	Nut Lock Flange 7/16-14 Gr. 5
69	199162	Washer 1.5 x .505 x .118
70	585338801	Bracket Deck Susp. Front
71	190752	Shaft Exten. Steering
72	428982	Bolt Fin Hex 5/16-18 x 4 w/Patch
75	580683701	Pinion
76	580683601	Screw Head Socket
122	444962	Cap Gear Sector

NOTE: All component dimensions given in U.S. inches.
1 inch = 25.4 mm.

TRACTOR- -MODEL NO. 917.991651

MOWER



TRACTOR- -MODEL NO. 917.991651

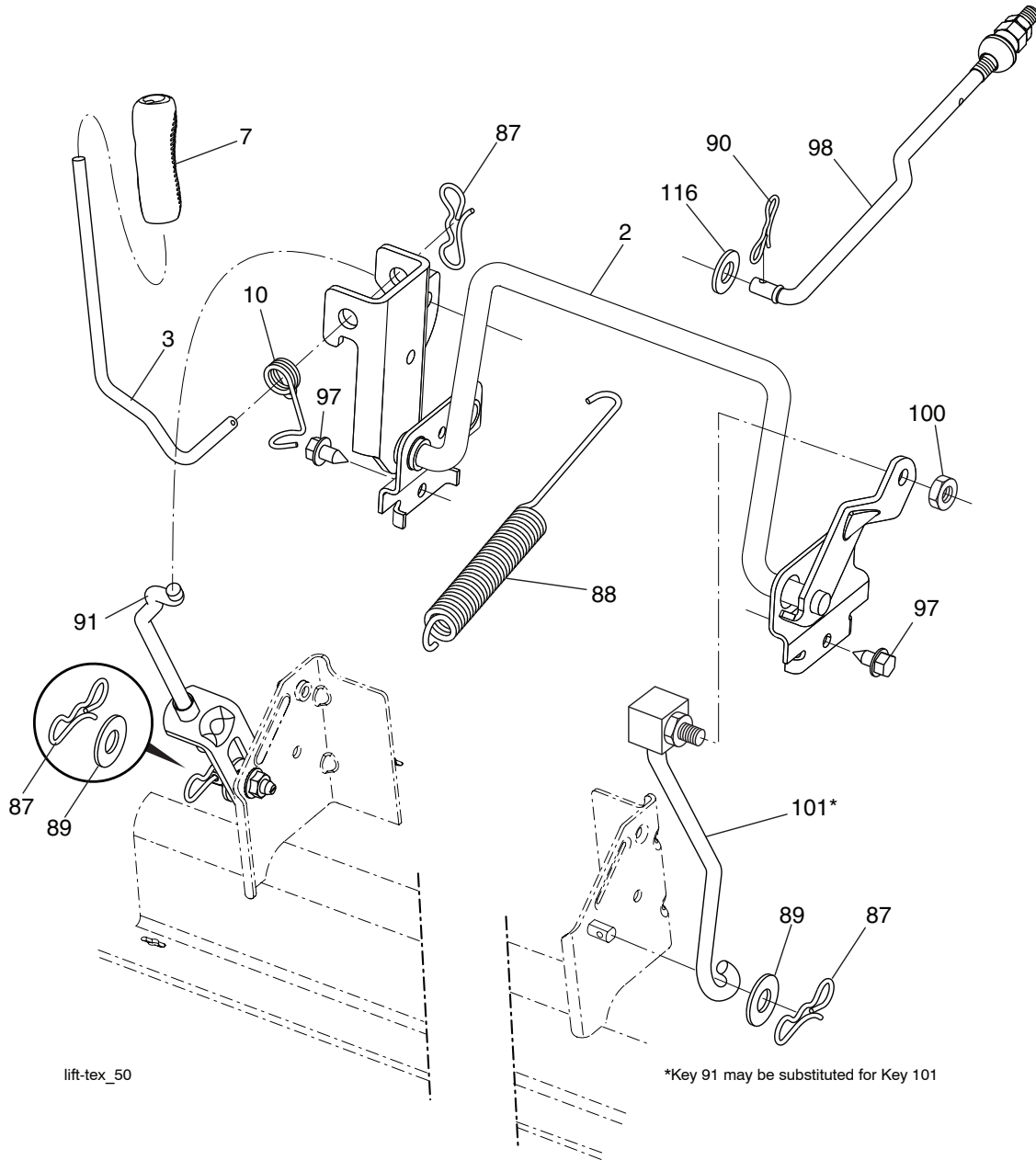
MOWER

KEY NO.	PART NO.	DESCRIPTION	KEY NO.	PART NO.	DESCRIPTION
1	436970	Deck Weldment	100	196539	Bolt Shoulder
3	73900500	Nut Lock Hex Flange 5/16 - 18	101	73680900	Nut Crownlock 9/16 - 18 unc
5	17000510	Bolt 5/16-18	102	402511	Spacer Bearing Swing Plate
7	416358	Screw #10 x 0.750 BOS Thread	103	436992	Guard Front Vent
11	137729	Screw Thd Roll 1/4 - 20 X 5/8	104	438968	Mandrel Cover RH
13	72110612	Bolt Carr Sh 3/8 - 16 X 1 - 1/2 Gr. 5	105	438744	Mandrel Cover LH
14	156085	Keeper Belt Idler	106	193216	Spring Brake Return
16	73900600	Nut Lock FIG 3/8 - 16 unc	110	587934801	Gear Output
17	400234	Nut Flange Lock Top	111	436979	Gasket Gearcase
19	585323901	Bearing Mandrel	112	443852	Shaft Gearcase
23	17490628	Screw Thdrol 3/8 - 16 X 1-3/4	113	438533	Plug Oil
10	17000616	Screw 3/8-16x1 smgml tap	114	588170501	Valve Relief
27	439726	V-Belt Drive	115	18031016	Screw Torx #10-24 x 1
30	584309301	Screw Sems 7/16-20 x 1 Hx Hd	116	72110414	Bolt 1/4-20 x 1.75 Gr. 5
32	401872	Spring Return Deck	117	73900400	Nut Hex Flange 1/4-20 unc
33	187281	Housing Mandrel 4pt Service	118	436989	Arm Clutching
34	587256501	Shaft Asm Mndrl	119	438166	Gearcase Subasm
35	427984	Blade Mower LH	120	436991	Keeper Belt RH
37	19131316	Washer 13/32 x 13/16 x 16 Ga.	121	436985	Washer
40	197258	Keeper Belt Engine LH	124	436986	Non Greasable Mandrel Shaft
41	584953901	Bolt Hex Wsh Hd .313-18 x 1.19	125	436994	Bracket Idler Chasses
42	17000512	Screw 5/16-18 x 3/4	127	193406	Bolt Shoulder 3/8-16 x 3-5/8 Gr. 5
43	197473	Pulley Mandrel	128	174873	Wheel Guage
45	137152	Housing Mandrel	129	404851	Rod Anti-Sway
67	198398X428	Handle Clutch Cable	130	19131312	Washer 13/32 x 13/16 x 12 Ga.
70	401246	Clutch Asm Manual LT Pred	131	194208	Pin Cotter 5/16 Bow Tie Lock
71	17670608	Screw Thdrol 3/8-16 x 1/2	132	178899	Knob Handle
72	582035601	Chute Upper	136	439639	Washout Port Hookup
75	131494	Pulley Idler Flat	137	12000029	Ring Klip
76	439640	Washout Port	138	440743	Hose 3/8 Long 12"
80	423062	Palnut 1/4	139	440742	Hose 3/8 Clamp
84	432520	Keeper Belt LH Mandrel	140	448632	Guard Asm LH
85	427985	Blade Mower RH	141	448530	Guard Asm. RH
86	181713	Bolt 3/8-24 x 1.50 Gr. 8	152	440488	Cable Clutch Manual w/Spring
87	10030600	Washer Lock Hvy 3/8	159	72140614	Bolt 3/8-16 x 1-3/4
88	140296	Washer Hard Blade Mower Vented	160	168937	Nut Push
89	438124	Arm Brake 97 LH	--	587253301	Mandrel Assembly (Includes Housing (key #33), Shaft Assembly (key #34), And Bearing Only (key #19)-Pulley/Nut/Washer And Blade Bolt/Washers Not Included)
90	199092	Spacer Retainer	--	441131	Replacement Mower Complete
91	19132012	Washer 13/32 x 1-1/4 x 12 Ga.			
92	436993	Rod Brake			
93	438125	Arm Brake RH			
94	197250	Bracket Clutch Cable			
95	17000612	Screw 3/8-16 x 3/4			
96	400271	Spacer			
97	182061	Shield Idler Mower			
98	195161	Stud Fastener			
99	195186	Arm Suspension Mower Rear			

NOTE: All component dimensions given in U.S. inches
1 inch = 25.4 mm

TRACTOR- -MODEL NO. 917.991651

MOWER LIFT



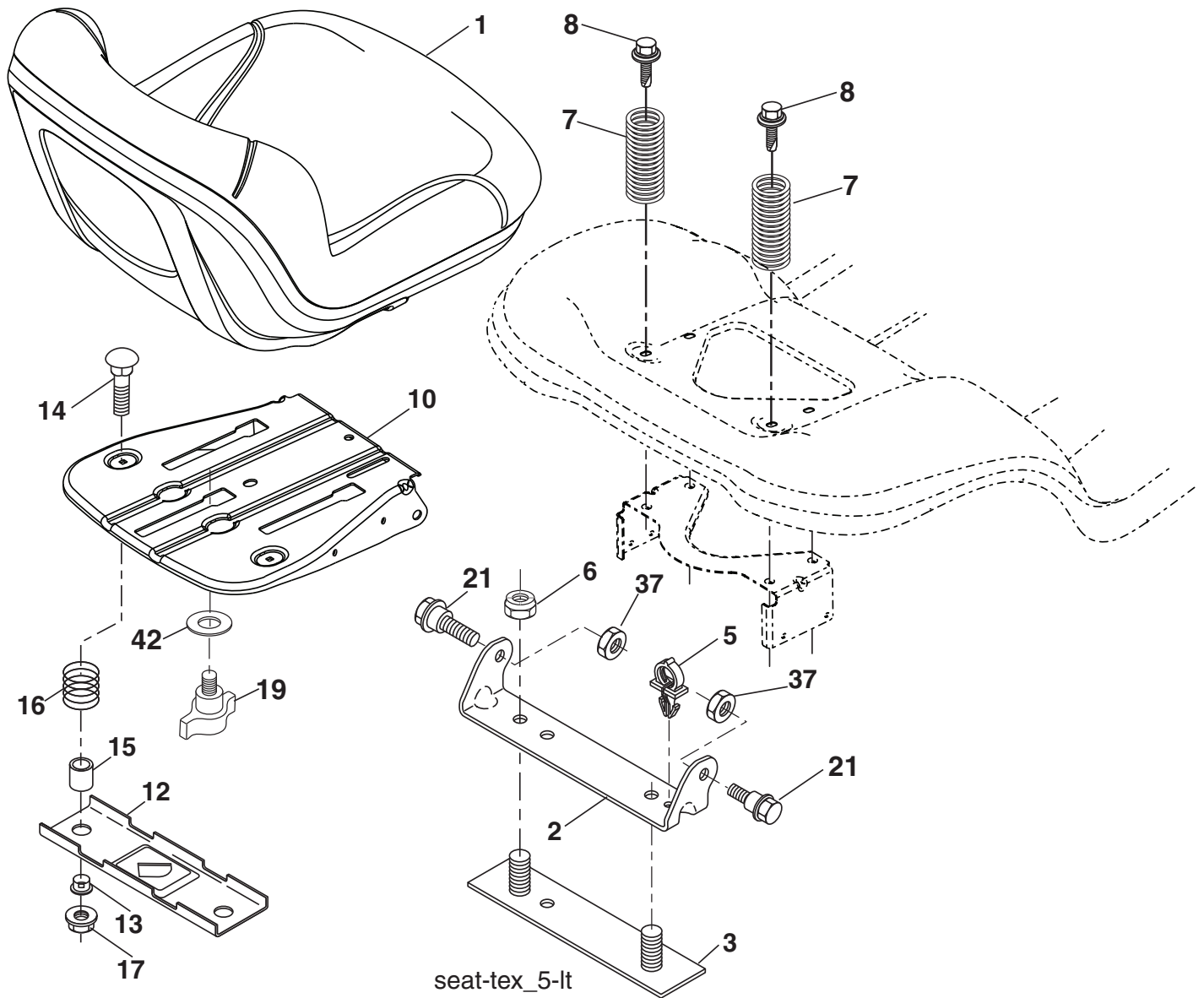
KEY NO.	PART NO.	DESCRIPTION
2	436996	Deck Lift Weldment
3	195231	Lever Asm., Lift RH
7	445060X428	Grip, Lever
10	196314	Spring Torsion
87	194209	Pin Cotter 7/16 Bow Tie Lock
88	436995	Spring Lift Assist
89	19191912	Washer Clear Zinc
90	194208	Pin Cotter 5/16 Bow Tie Lock
91	195181	Link Lift Susp. Mower Rear

KEY NO.	PART NO.	DESCRIPTION
97	17490608	Screw 3/8-16 x 1/2
98	195270	Link Lift Susp. Front Mower
100	73930600	Nut Centerlock 3/8-16
101	407003	Link Asm. Lift FXD
116	19151516	Washer 15/32 x 15/16 x 16 Ga.

NOTE: All component dimensions given in U.S. inches
1 inch = 25.4 mm

TRACTOR- -MODEL NO. 917.991651

SEAT ASSEMBLY



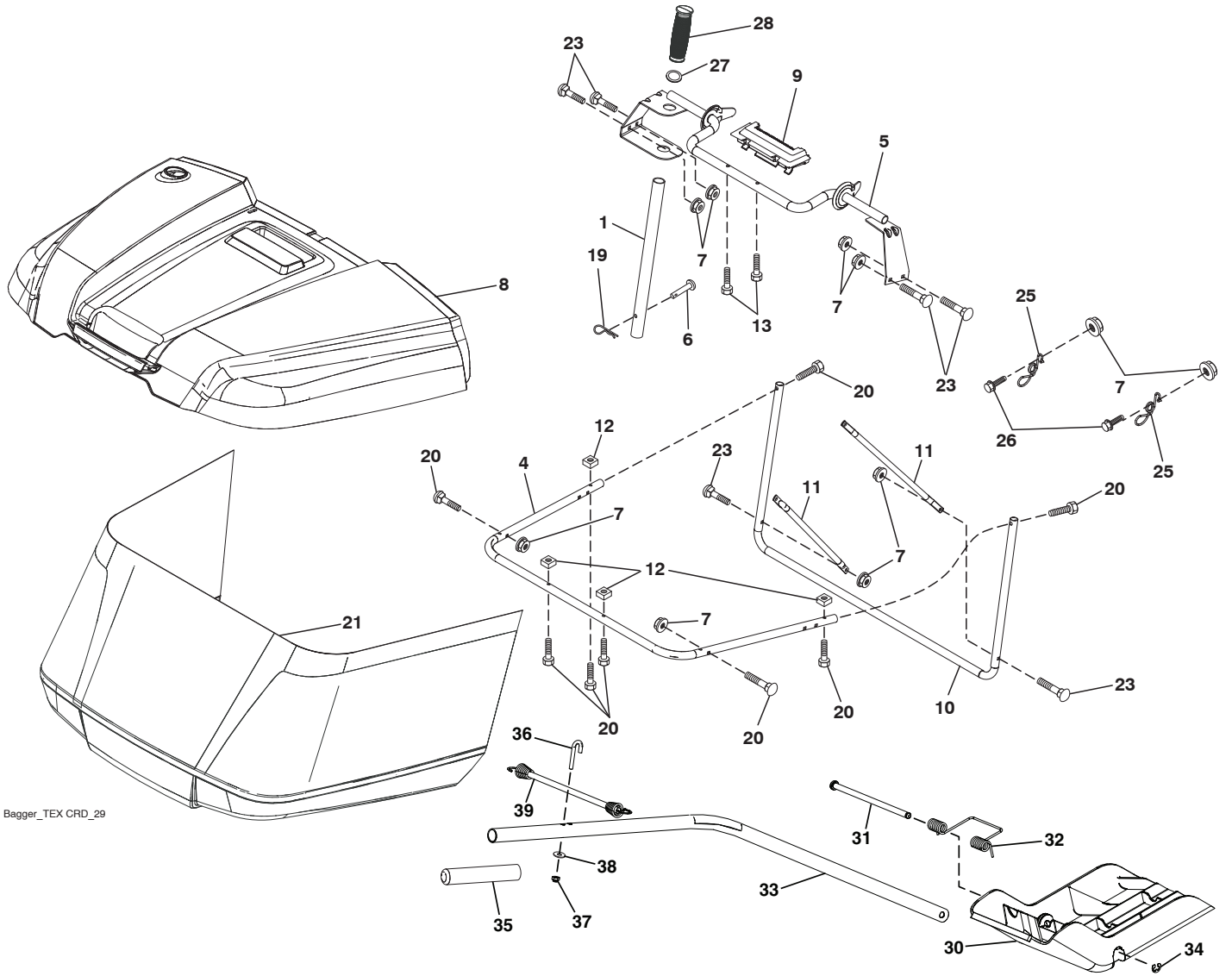
seat-tex_5-lt

KEY NO.	PART NO.	DESCRIPTION	KEY NO.	PART NO.	DESCRIPTION
1	586507601	Seat	16	123740X	Spring
2	180166	Bracket Pivot Fender	17	123976X	Nut Lock 1/4 Gr. 5
3	140675	Strap Asm. Fender	19	199372	Knob Seat
6	73800600	Nut, Lock W/Ins. 3/8-16 unc	21	587907801	Bolt, Shoulder 5/16-18 x 5/8
7	587613301	Spring, Seat Cprsn	37	73800500	Nut, Lock 5/16-18 unc
8	171877	Bolt 5/16-18 unc x 3/4 w/Sems	42	199371	Washer Cup Seat
10	441805	Pan, Seat			
12	199370	Bracket Mount Seat			
13	121248X	Bushing Snap			
14	72050412	Bolt 1/4-20 x 1-1/2			
15	134300	Spacer Split			

NOTE: All component dimensions given in U.S. inches.
1 inch = 25.4 mm

TRACTOR- -MODEL NO. 917.991651

BAGGER



Bagger_TEX CRD_29

TRACTOR- -MODEL NO. 917.991651

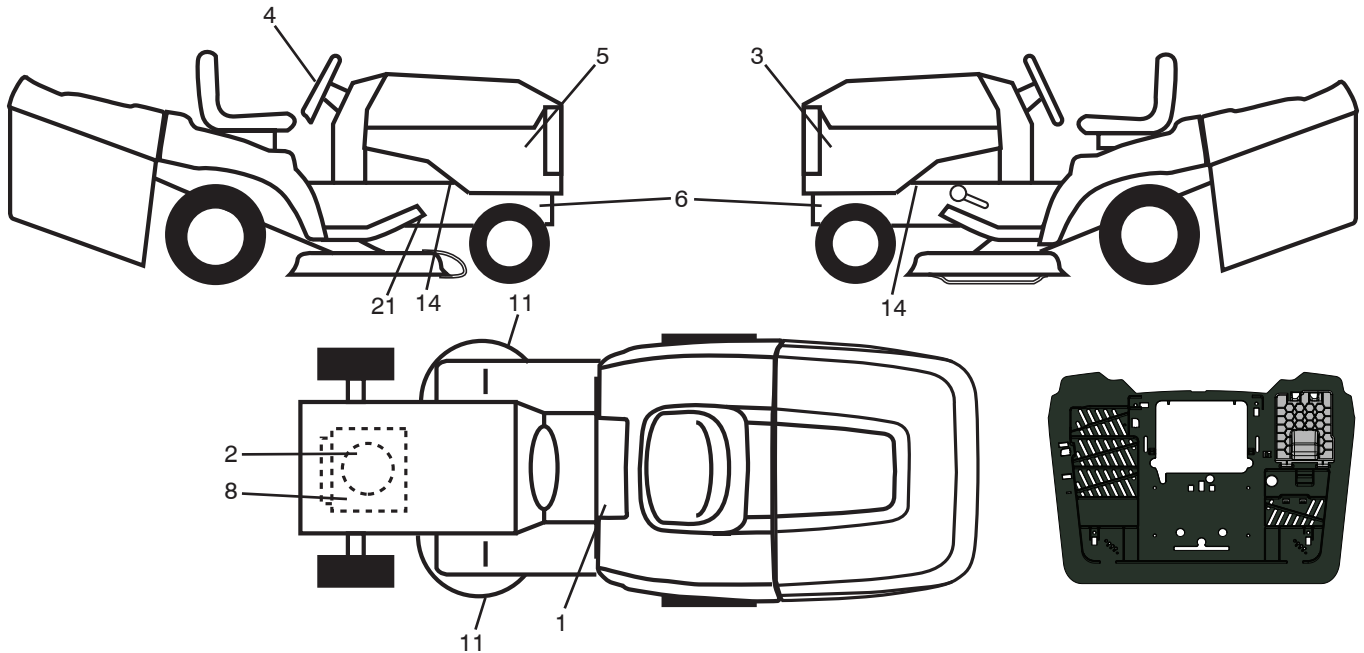
BAGGER

KEY NO.	PART NO.	DESCRIPTION
1	428610	Tube Handle Bagger
4	579785401	Frame Asm Bagger Top
5	417632	Frame Asm Top Bagger
6	126875X	Rivet Drilled
7	73900400	Nut Hex Flange 1/4-20 unc
8	417628X428	Cover Bagger
9	417629	Insert Handle Bagger
10	436770	Frame Front
11	436771	Tubing Brace Bagger
12	421793	Nut Square 1/4
13	421780	Screw 1/4 x 1.150
19	194208	Cotter Pin 5/16 Bow Tie
20	501406601	Screw Hex Cap 1/4-20 x 1.500
21	448307	Bag Asm
23	72040410	Bolt Carr. 1/4-20
25	421614	Spring Latch Bagger
26	17490412	Screw
27	421262	Grommet Rubber
28	165787	Grip Handle Black
30	437452	Plug Mulch
31	435861	Pin Hinge
32	437454	Spring Double Torsion
33	438451	Shaft
34	437988	E-ring
35	439139	Grip Mulch
36	439098	Bolt J
37	69180	Nut Lock
38	19070818	Washer
39	439242	Bungee

NOTE: All component dimensions given in U.S. inches
1 inch = 25.4 mm

TRACTOR- -MODEL NO. 917.991651

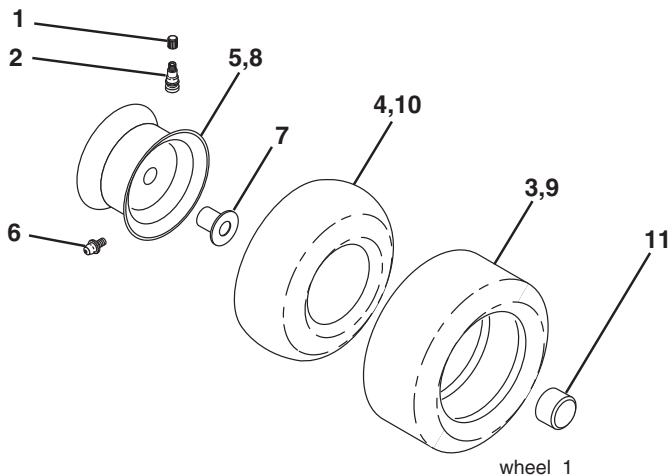
DECALS



KEY NO.	PART NO.	DESCRIPTION
1	581578301	Decal Read Owner's Manual Sym
2	581885901	Decal Hp Engine
3	586207302	Decal Hood LH
4	581894601	Decal Steering Wheel
5	586207301	Decal Hood Side RH
6	581579801	Decal Warning Service/Fire
8	581579701	Decal Engine Warning Sym
11	581579101	Decal Mower Cut Finger Symbol
14	581579601	Decal Chassis Hot Muffler
21	441189	Decal Deck Sch CRD

KEY NO.	PART NO.	DESCRIPTION
--	588821401	Decal, Inst. Mulchplug
--	444619	Decal Bypass
--	442744	Decal Battery Door
--	419267X428	Pad Footrest LH
--	419266X428	Footrest Pad RH
--	115797440	Manual Operator's (Euro)
--	115797550	Manual Operator's (Scan)
--	115797620	Manual Operator's (E-Bloc)
--	115797730	Manual Operator's (Baltic)
--	115797827	Manual Parts

WHEELS & TIRES

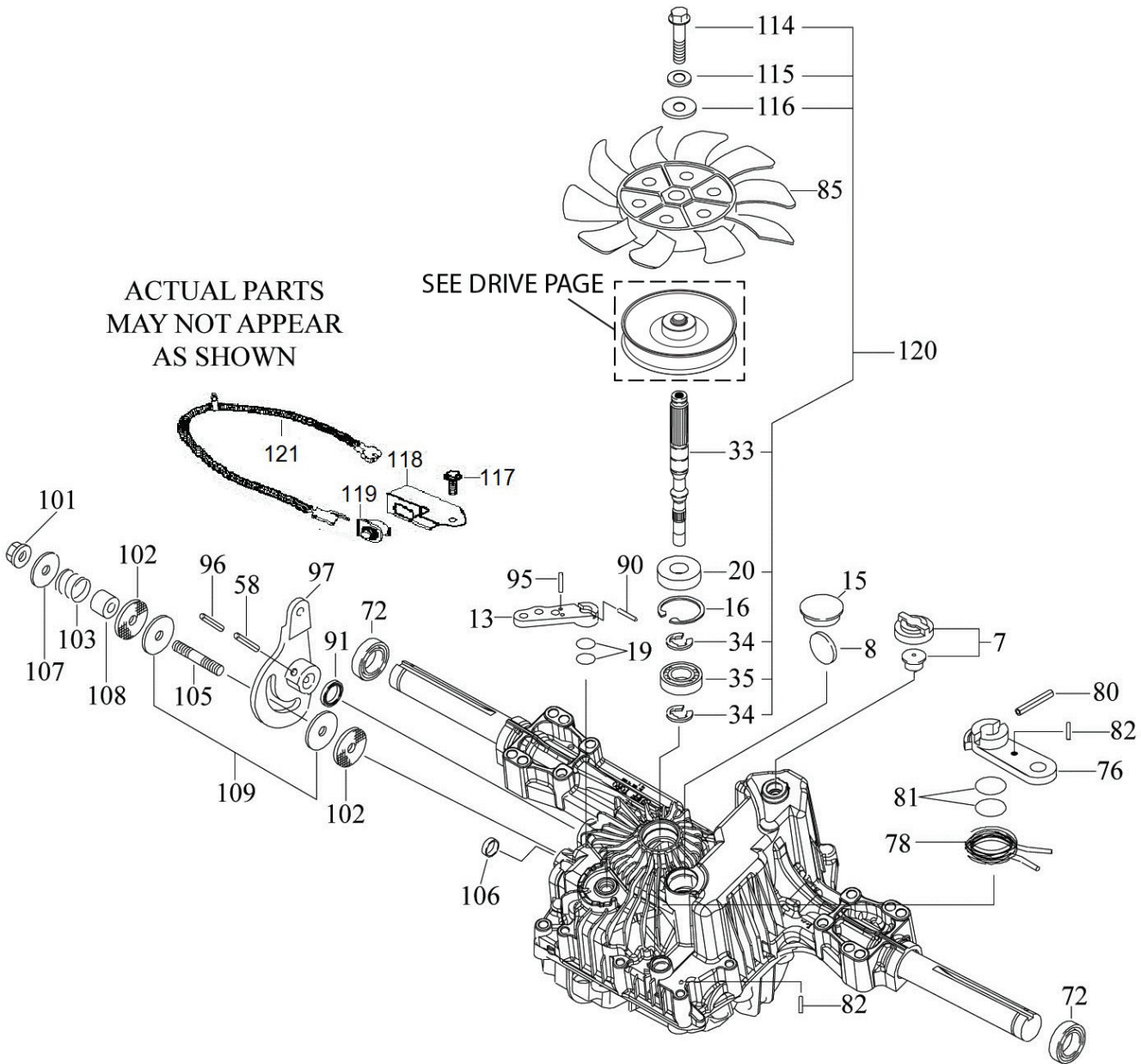


KEY NO.	PART NO.	DESCRIPTION
1	59192	Cap Value Tire
2	65139	Stem Value
3	106222X	Tire Front 15 x 6-6
4	59904	Tube Inner Front #35060
5	106732X613	Rim Asm 6" Front Service
6	278H	Fitting Grease
7	9040H	Bearing Flange
8	106108X613	Rim Asm 8" Rear Service
9	420531	Tire Rear 18 x 9.5-8
10	7152J	Tube Rear 9.5 x 8 Service
11	104757X428	Cap Axle Blk 1 50 x 1 00
--	144334	Sealant, Tire (10 oz. tube)

NOTE: All component dimensions given in U.S. inches
1 inch = 25.4 mm

SERVICE NOTES

TUFFTORQ TRANSAXLE MODEL NUMBER K46DC 7A646084421



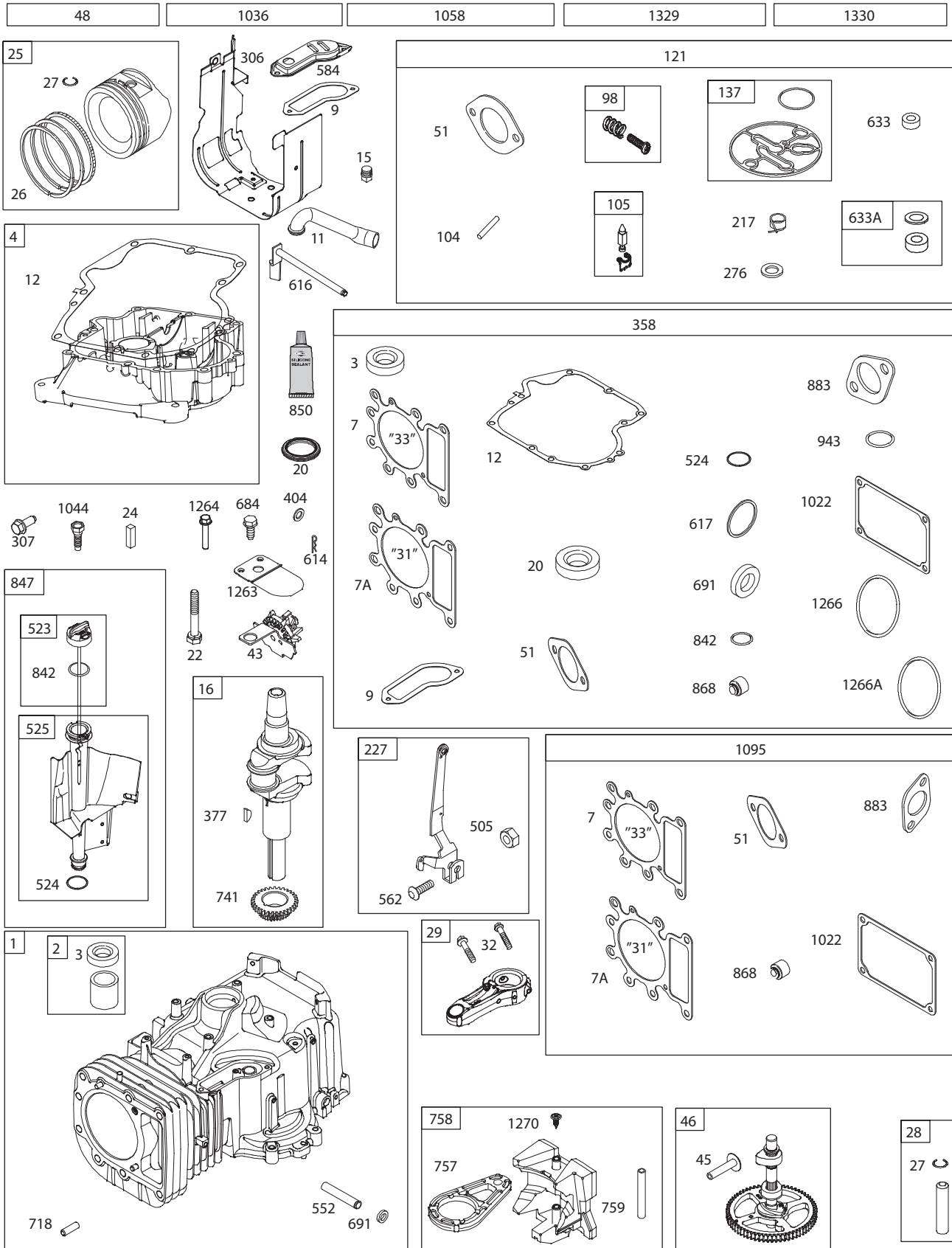
TRACTOR - - MODEL NUMBER 917.991651
TUFFTORQ TRANSAXLE MODEL NUMBER K46DC

KEY NO.	PART NO.	DESCRIPTION
--	--	K46DC TRANSAXLE
7	588190701	VENT VALVE
8	414396	MAGNET
12	588190801	BYPASS SHAFT B
13	414398	BYPASS LEVER
15	588190901	SEALING CAP 30
16	414400	SNAP RING C 35
19	414401	O-RING 1A P10A
20	414402	SEAL TC 153507
33	588191001	PUMP SHAFT
34	588191101	E-RING 12
35	588191301	BEARING 6202
58	414406	ROLL PIN 6 * 40
72	414407	SEAL 19 * 32 * 8
76	588208201	BRAKE LEVER
78	414409	BRAKE RETURN SPRING
80	414410	SPRING PIN 5 * 32
81	414411	O-RING 1A P12
82	414412	SPRING PIN 4 * 16
85	588191601	FAN WHITE
90	414418	SPRING PIN 3.0A * 20
91	414419	OIL SEAL 16 * 22 * .03
95	415850	SPRING PIN 3.0A * 16
96	414420	ROLL PIN 3.5 * 40
97	414421	CONTROL LEVER
101	414216	LOCK NUT 10
102	414423	WASHER 10 * 40 * 4
103	414424	SPRING
105	414425	STUD 10*60
106	414426	SEALING CAP 18
107	414427	WASHER 10 * 36 * 2.8
108	414428	COLLAR 10 * 22 * 17
109	414429	FRICTION PLATE KIT
114	588191701	BOLT
115	588191801	LOCK WASHER
116	588191901	WASHER
117	588192001	TAPPING SCREW 8 * 20
118	588192101	SWITCH BRACKET
119	588192201	SWITCH 6440-11 DELTA
120	588192301	PUMP SHAFT/BEARING KIT
121	441262	PIGTAIL WIRE

NOTE: All component dimensions given in U.S. inches
1 inch = 25.4 mm

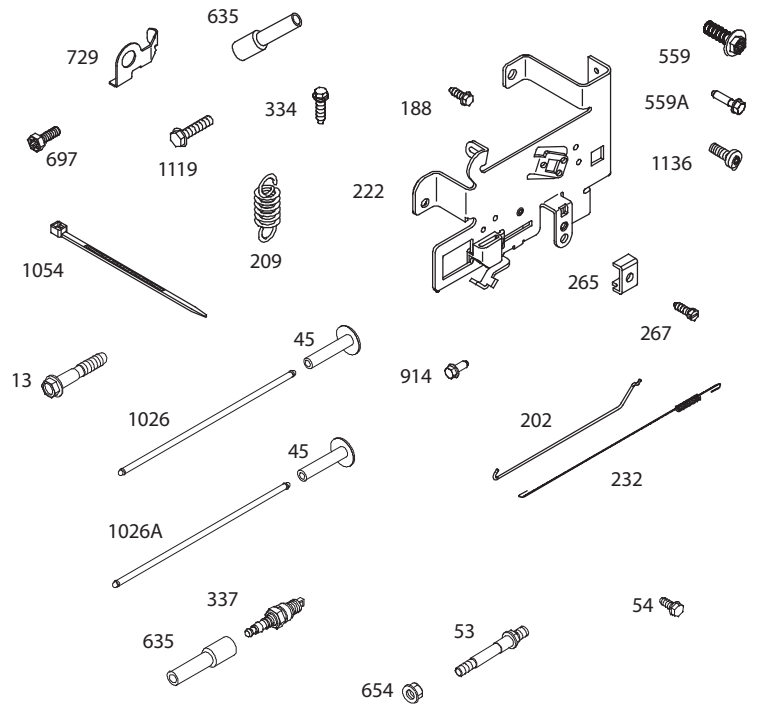
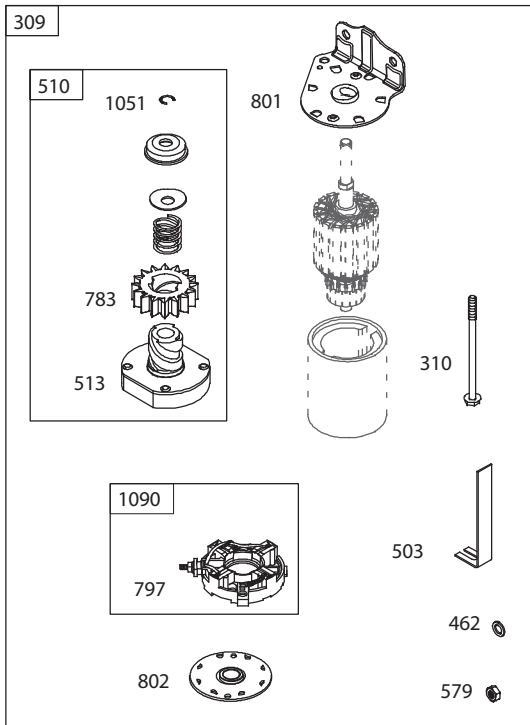
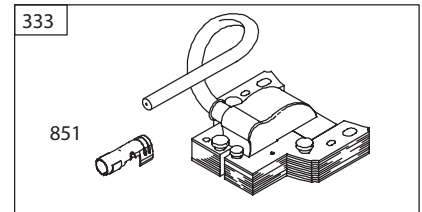
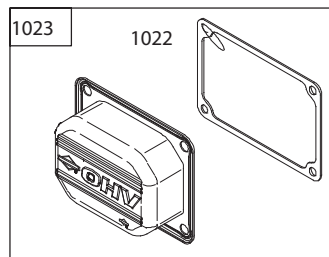
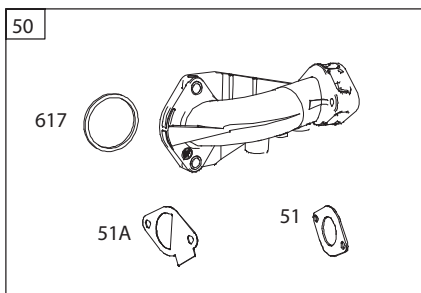
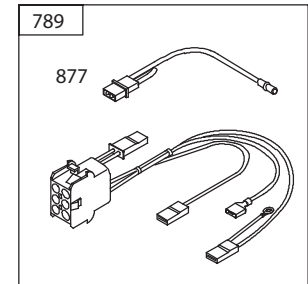
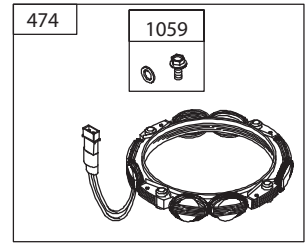
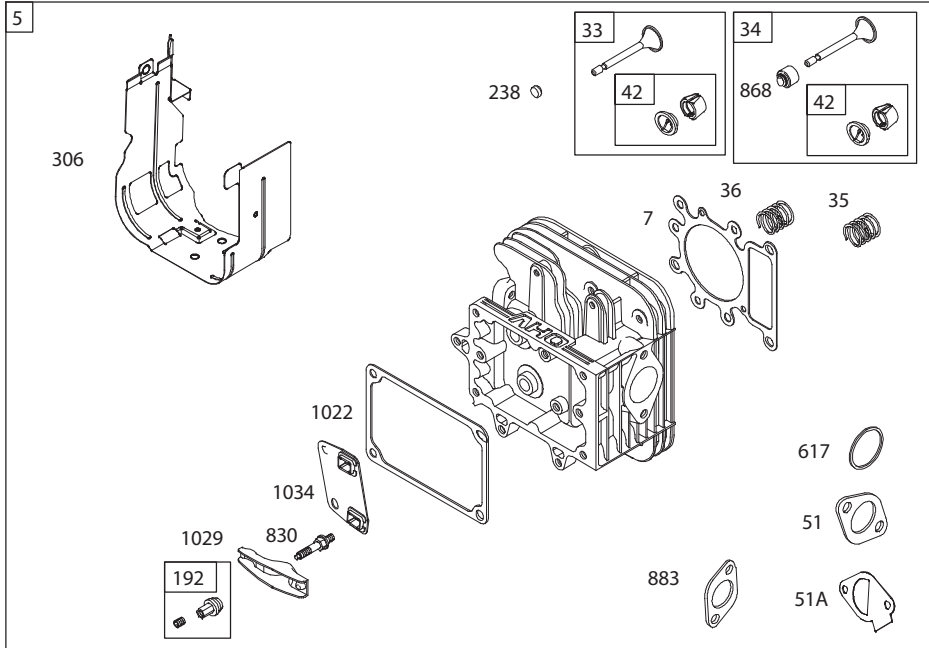
TRACTOR- -MODEL NO. 917.991651

BRIGGS & STRATTON ENGINE - - MODEL NUMBER 31Q507, TYPE NUMBER 0010-H1

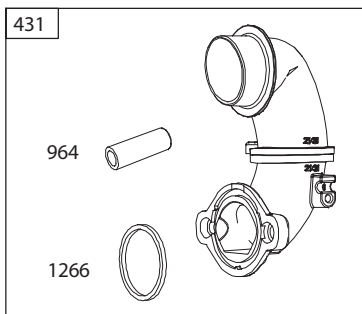
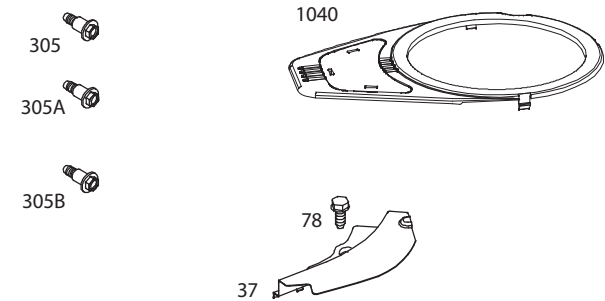
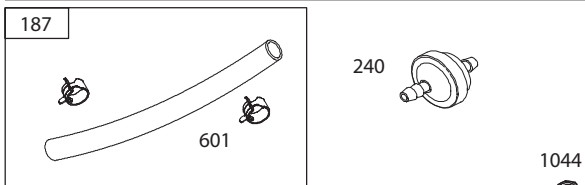
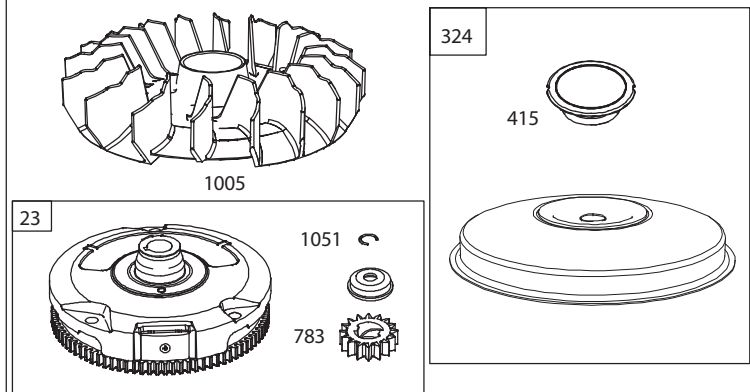
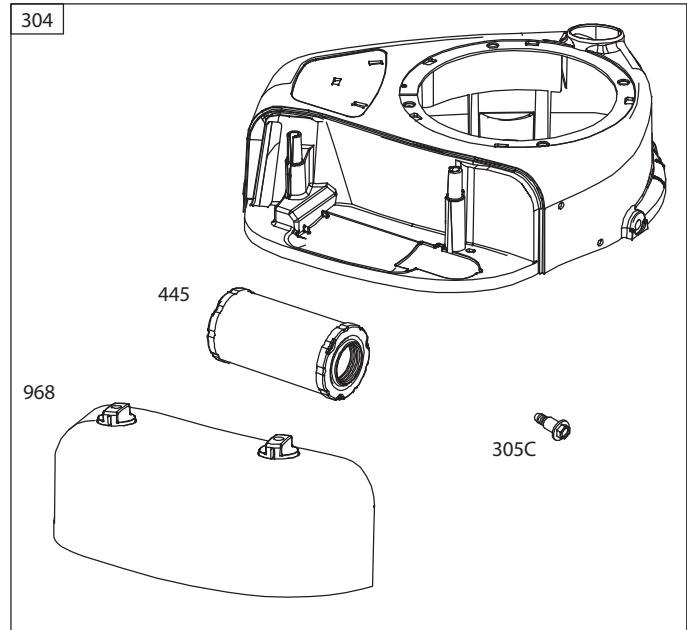
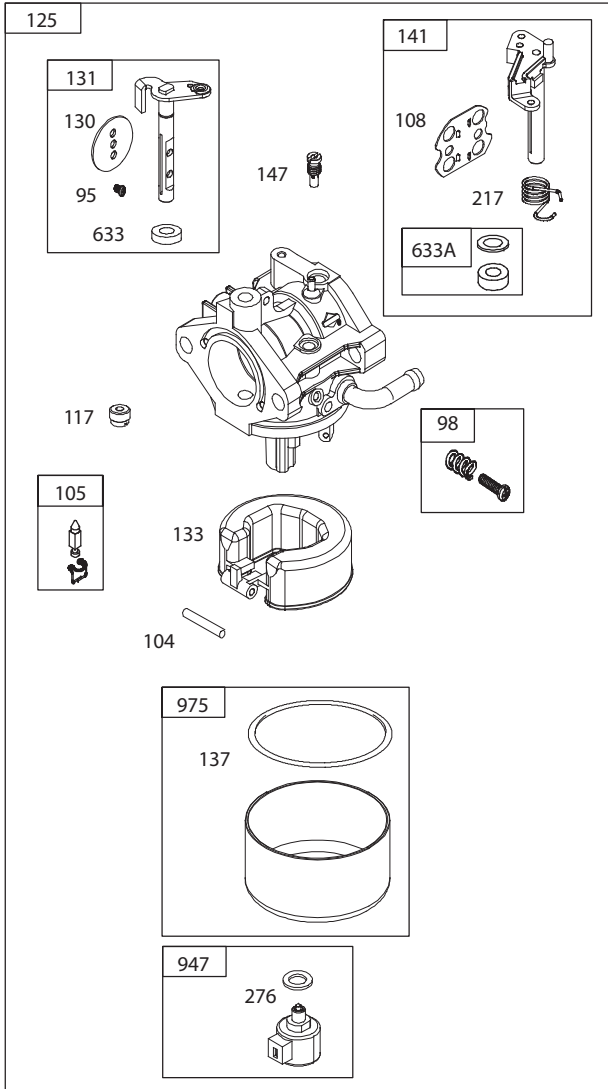


TRACTOR- -MODEL NO. 917.991651

BRIGGS & STRATTON ENGINE - - MODEL NUMBER 31Q507, TYPE NUMBER 0010-H1



TRACTOR- -MODEL NO. 917.991651
BRIGGS & STRATTON ENGINE - - MODEL NUMBER 31Q507, TYPE NUMBER 0010-H1



TRACTOR- -MODEL NO. 917.991651

BRIGGS & STRATTON ENGINE - - MODEL NUMBER 31Q507, TYPE NUMBER 0010-H1

KEY NO.	PART NO.	DESCRIPTION	KEY NO.	PART NO.	DESCRIPTION
1	796010	Cylinder Assembly	51A	796081	Gasket-Intake (Restrictor)
2	797673	Bushing/Seal Kit (Magneto Side)	53	591260	Stud (Carburetor)
3	391086s	Seal-Oil (Magneto Side)	54	691148	Screw (Intake Manifold)
4	697106	Sump-Engine	78	691693	Screw (Flywheel Guard)
5	796026	Head-Cylinder	95	593897	Screw (Throttle Valve)
7	796584	Gasket-Cylinder Head (Model "31")	98	846817	Kit-Idle Speed
7A	794114	Gasket-Cylinder Head (Model "33")	104	594860	Pin-Float Hinge
9	697109	Gasket-Breather	105	594868	Valve-Float Needle
11	794683	Tube-Breather	108	594863	Valve-Choke
12	697110	Gasket-Crankcase	117	594869	Jet-Main (Standard)
13	592244	Screw (Cylinder Head)	121	594886	Kit-Carburetor Overhaul
15	690946	Plug-Oil Drain	125	594593	Carburetor
16	591762	Crankshaft	130	594857	Valve-Throttle
20	795387	Seal-Oil (PTO Side)	131	594855	Kit-Throttle Shaft
22	692125	Screw (Crankcase Cover/Sump)	133	594859	Float-Carburetor
23	591759	Flywheel	137	594861	Gasket-Float Bowl
24	591757	Key-Flywheel (Steel)	141	594862	Kit-Choke Shaft
25	594435	Piston Assembly (Standard)	147	594870	Jet-Pilot
	594436	Piston Assembly (.020" Oversize)	187	791766	Line-Fuel (Cut to Required Length)
26	594437	Ring Set (Standard)	188	691693	Screw (Control Bracket)
	594438	Ring Set (.020" Oversize)	192	691986	Adjuster-Rocker Arm
27	698469	Lock-Piston Pin	202	691841	Link-Mechanical Governor
28	594439	Pin-Piston	209	796260	Spring-Governor (Green)
29	794122	Rod-Connecting	217	594864	Spring-Choke Return
32	791118	Screw (Connecting Rod)	222	694042	Bracket-Control
33	792868	Valve-Exhaust	227	691374	Lever-Governor Control
34	791935	Valve-Intake	232	691842	Spring-Governor Link
35	691279	Spring-Valve (Intake)	238	691843	Cap-Valve
36	691279	Spring-Valve (Exhaust)	240	394358s	Filter-Fuel (White)
37	697352	Guard-Flywheel	265	691024	Clamp-Casing
42	499586	Keeper-Valve	267	794904	Screw (Casing Clamp)
43	691968	Slinger-Governor/Oil	276	846640	Washer-Sealing
45	690564	Tappet-Valve	304	591642	Blower Housing
46	793880	Gear-Cam	305	697102	Screw (Blower Housing)
48	N/A	Short Block			(1/4-20x1.14)
50	592842	Manifold-Intake	305A	793376	Screw (Blower Housing)
51	692137	Gasket-Intake			(1/4-20x.68)
			305B	795891	Screw (Blower Housing to

TRACTOR- -MODEL NO. 917.991651

BRIGGS & STRATTON ENGINE - - MODEL NUMBER 31Q507, TYPE NUMBER 0010-H1

KEY NO.	PART NO.	DESCRIPTION	KEY NO.	PART NO.	DESCRIPTION
		Intake Elbow) (#10-16x.43)	633	797629	Seal-Choke/Throttle Shaft
305C	799370	Screw (Blower Housing)			(Throttle Shaft)
		(1/4-20x.90)	633A	594865	Seal-Choke/Throttle Shaft
306	592777	Shield-Cylinder			(Choke Shaft)
307	691693	Screw (Cylinder Shield)	635	691909	Boot-Spark Plug
309	593934	Motor-Starter	654	690958	Nut (Carburetor) (Serrated)
310	690323	Screw (Starter Motor)	684	697157	Screw (Breather Assembly)
324	593933	Screen/Cup Assembly	691	692407	Seal-Governor Shaft
333	799650	Armature-Magneto	697	791680	Screw (Drive Cap)
334	691061	Screw (Magneto Armature)	718	690959	Pin-Locating
337	691043	Plug-Spark	724	697478	Link-Starter Switch
358	796187	Gasket Set-Engine	729	691224	Clip-Wire
377	691639	Key-Woodruff	741	697128	Gear-Timing
404	691691	Washer (Governor Crank)	757	793242	Link-Counterweight
415	794129	Plug (Cover/Retainer)	758	594443	Counterweight
431	797901	Elbow-Intake	759	697392	Pin-Counterweight
445	591334	Filter-Air Cleaner Cartridge	783	593935	Gear-Pinion (Steel)
462	691261	Washer (Starter Cable)	789	698329	Harness-Wiring
474	592831	Alternator	801	691283	Cap-Drive
503	691532	Strap-Starter	802	691286	Cap-End
505	691251	Nut (Governor Control Lever)	830	691095	Stud-Rocker Arm
510	693699	Drive-Starter	842	691031	Seal-O Ring (Dipstick Tube)
513	692024	Clutch-Drive	847	790442	Dipstick/Tube Assembly
523	699908	Dipstick	850	100106	Sealant-Liquid
524	691032	Seal-Dipstick Tube	851	692424	Terminal-Spark Plug
525	697184	Tube-Dipstick	868	690968	Seal-Valve
552	697144	Bushing-Governor Crank	877	790544	Wire/Connector-Alternator
559	693675	Screw (Remote Choke Stop)	883	692236	Gasket-Exhaust
		(6 Lobe)	914	691108	Screw (Rocker Cover)
559A	697561	Screw (Remote Choke Stop)	943	690589	Seal-O Ring (Oil Pump Cover)
		(#8-32x.37)	947	846639	Solenoid-Fuel
562	691119	Screw (Governor Control Lever)	964	799159	Cap-Connector
579	691029	Nut (Starter Cable)	968	591647	Cover-Air Cleaner
584	794682	Cover-Breather Passage	975	594867	Bowl-Fuel
601	791850	Hose-Clamp (Green)	1005	796083	Fan-Flywheel
614	691620	Pin-Cotter (Governor Crank)	1022	272475s	Gasket-Rocker Cover
616	692012	Crank-Governor	1023	797421	Cover-Rocker
617	692138	Seal-O Ring (Intake Manifold)	1026	692003	Rod-Push (Intake) (Aluminum)
		(Red)	1026A	692011	Rod-Push (Exhaust) (Steel)

TRACTOR- -MODEL NO. 917.991651

BRIGGS & STRATTON ENGINE - - MODEL NUMBER 31Q507, TYPE NUMBER 0010-H1

KEY NO.	PART NO.	DESCRIPTION
1029	691751	Arm-Rocker
1034	690822	Guide-Push Rod
1036		Label-Emissions (Available from a Briggs & Stratton Authorized Dealer)
1040	699852	Plate-Trim
1044	698139	Screw (Flywheel)
1051	691265	Ring-Retaining
1054	280275	Tie-Cable
1058	276344	Operator's Manual
1059	698516	Kit-Screw/Washer (Alternator)
1090	691293	Retainer-Brush
1095	794152	Gasket Set-Valve
1119	691183	Screw (Alternator)
1136	699891	Screw (High Speed Control)
1263	697124	Reed-Breather
1264	697104	Screw (Breather Reed)
1266	691917	Seal-O Ring (Intake Elbow) (Red)
1266A	697123	Seal-O Ring (Intake Elbow)
1270	793243	Plug-AVS Counterweight
1329	N/A	Replacement Engine
1330	N/A	Repair Manual

Carburetor Overhaul Kit	Key No. 121
Engine Gasket Set	Key No. 358
Valve Gasket Set	Key No. 1095

NOTE: All component dimensions given in U.S. inches
1 inch = 25.4 mm

LIMITED WARRANTY ON CRAFTSMAN RIDING EQUIPMENT

For two (2) years from the date of purchase, if this Craftsman Riding Equipment is maintained, lubricated and tuned up according to the instructions in the owner's manual, Sears will repair or replace free of charge any parts that are found to be defective in material or workmanship according to the guidelines of coverage listed below. Sears will also provide free labor for these applicable warranted parts for the two full years. During the first 30 days of purchase, there will be no charges to service the product at your home for issues covered by this warranty. (See exclusions below). For your convenience, IN HOME warranty service will still be available after the first 30 days of purchase, but a trip charge will apply. This charge will be waived if the Craftsman product is dropped off at an authorized Sears location. For the nearest authorized Sears location, please call 1-800-4-MY-HOME®. This warranty applies only while this product is within the United States.

This Warranty does not cover:

- Expendable items which become worn during normal use, including but not limited to blades, spark plugs, air cleaners, belts, and oil filters.
- Standard Maintenance Servicing, oil changes, or tune-ups
- Tire replacement or repair caused by punctures from outside objects, such as nails, thorns, stumps, or glass.
- Repairs necessary because of operator abuse, including but not limited to, damage caused by towing objects beyond the capability of the riding equipment, impacting objects that bend the frame or crankshaft, or over-speeding the engine.
- Repairs necessary because of operator negligence, including but not limited to, electrical and mechanical damage caused by improper storage, failure to use the proper grade and amount of engine oil, failure to keep the deck clear of flammable debris, or failure to maintain the equipment according to the instructions contained in the owner's manual.
- Engine (fuel system) cleaning or repairs caused by fuel determined to be contaminated or oxidized (stale). In general, fuel should be used within 30 days of its purchase date.
- Normal deterioration and wear of the exterior finishes, or product label replacement.
- Riding equipment used for commercial or rental purposes.

LIMITED WARRANTY ON BATTERY

For ninety (90) days from date of purchase, if any battery included with this riding equipment proves defective in material or workmanship and our testing determines the battery will not hold a charge, Sears will replace the battery at no charge. During the first 30 days of purchase, there will be no charges to replace the battery at your HOME. After the first 30 days, for your convenience, IN-HOME warranty service will still be available but a trip charge will apply. This charge will be waived if the Craftsman product is dropped off at an authorized Sears location. For the nearest authorized Sears location, please call 1-800-4-MY-HOME®.

This battery warranty applies only while this product is within the United States.

This warranty gives you specific legal rights, and you may also have other rights, which vary, from state to state.

Sears Brands Management Corporation, Dept.817WA, Hoffman Estates, IL 60179

