

# CRAFTSMAN®

Product questions or problems?

## 1-888-331-4569

### Customer Care Hot Line

Get answers to questions, troubleshoot problems,  
order parts, or schedule repair service.

Para respuestas a preguntas o problemas, y ordenar  
piezas o pedir servicio para la reparación de su equipo.

To help us help you, register your product at [www.craftsman.com/registration](http://www.craftsman.com/registration)

Para poderte ayudar mejor, registra tu producto en [www.craftsman.com/registration](http://www.craftsman.com/registration)

Join the Craftsman Club today!

## CRAFTSMAN® CLUB

[www.craftsman.com/signup](http://www.craftsman.com/signup)

Receive exclusive member benefits including special pricing and offers,  
project sharing, expert advice, and SHOP YOUR WAY REWARDS!

Como miembro exclusivo, recibe diversos beneficios como ofertas, precios especiales, proyectos  
nuevos, consejos de expertos y nuestro programa de puntos SHOP YOUR WAY REWARDS!

® Registered Trademark / ™ Trademark of KCD IP, LLC in the United States, or Sears Brands, LLC in other countries  
® Marca Registrada / ™ Marca de Fábrica de KCD IP, LLC en Estados Unidos, o Sears Brands, LLC in otros países

## Repair Parts Manual

# CRAFTSMAN®

## GARDEN TRACTOR

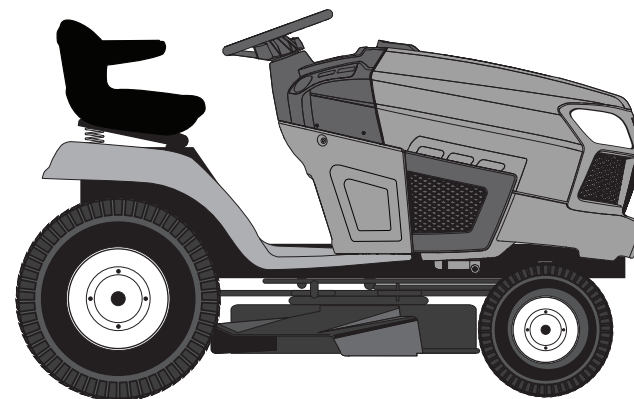
24.0 HP,\* 54" Mower

Electric Start

Automatic Transmission

Model No.

**917.204081**



For answers to your questions  
about this product, call:

**1-888-331-4569**

**Craftsman Customer Help Line**

Sears Brands Management Corporation, Hoffman Estates, IL 60179 U.S.A.  
Visit our Craftsman website: [www.craftsman.com](http://www.craftsman.com)

\* The power rating as declared by the engine manufacturer is the average gross power output at the specified RPM of a typical production engine for the engine model measured using SAE Standards for engine gross power. Please refer to the engine manufacturer for details.

**⚠ WARNING:** This tractor is equipped with an internal combustion engine and should not be used on or near any unimproved forest-covered, brush-covered or grass-covered land unless the engine's exhaust system is equipped with a spark arrester meeting applicable local or state laws (if any). If a spark arrester is used, it should be maintained in effective working order by the operator.

In the state of California the above is required by law (Section 4442 of the California Public Resources Code). Other states may have similar laws. Federal laws apply on federal lands. A spark arrester for the muffler is available through your nearest Sears service center (See ENGINE ASSEMBLY section of this manual).

## REPAIR PROTECTION AGREEMENTS

*Congratulations on making a smart purchase.* Your new Craftsman® product is designed and manufactured for years of dependable operation. But like all products, it may require repair from time to time. That's when having a Repair Protection Agreement can save you money and aggravation.

### Here's what the Repair Protection Agreement\* includes:

- ☑ **Expert service** by experienced service technicians trusted in millions of homes every year.
- ☑ **Unlimited service and no charge** for parts and labor on all covered repairs.
- ☑ **Product replacement** up to \$1500 if your covered product can't be fixed.
- ☑ **Discount of 25%** from regular price of service and related installed parts not covered by the agreement.
- ☑ **Fast help by phone** – phone support from a service agent on all products to help troubleshoot problems. Think of us as a "talking owner's manual."

Once you purchase the Repair Protection Agreement, a simple phone call is all that it takes for you to schedule service. You can call anytime day or night.

The Repair Protection Agreement is a risk-free purchase. If you cancel for any reason during the product warranty period, we will provide a full refund. Or, a prorated refund anytime after the product warranty period expires. Purchase your Repair Protection Agreement today!

**Some limitations and exclusions apply. For prices and additional information call 1-800-827-6655.**

### Sears Installation Service

*For Sears professional installation of home appliances, garage door openers, water heaters, and other major home items, call 1-888-331-4569.*

**TRACTOR -- MODEL NUMBER 917.204081**  
**BRIGGS ENGINE -- MODEL NUMBER 44U877, TYPE NUMBER 0007-G1**

**SCHEMATIC**

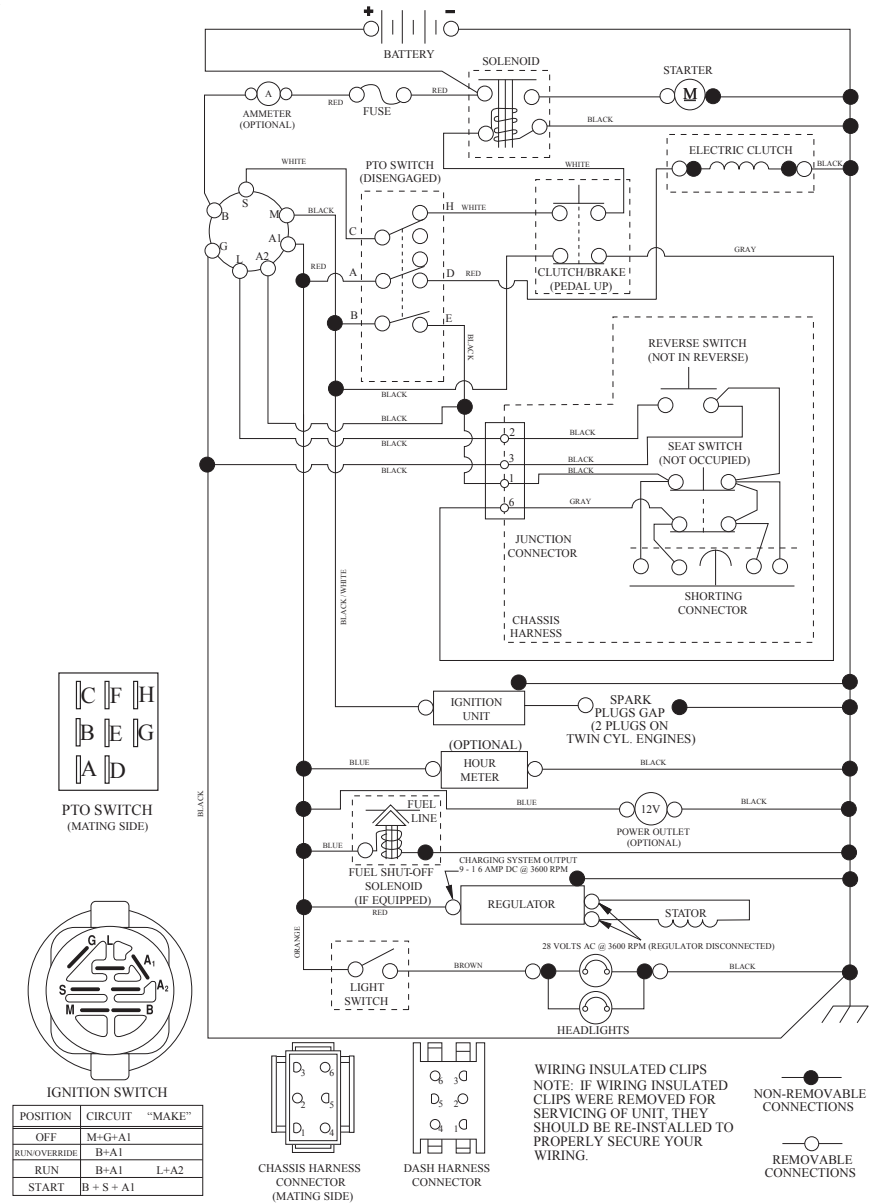
KEY NO.	PART NO.	DESCRIPTION	KEY NO.	PART NO.	DESCRIPTION
510	592602	Drive-Starter	947	798779	Solenoid-Fuel
513	692024	Clutch-Drive	964	799159	Cap-Connector
523	594528	Dipstick	965	796221	Cover-Oil Pump
524	691032	Seal-Dipstick Tube	968	795120	Cover-Air Cleaner
525	691037	Tube-Dipstick	975	594208	Bowl-Fuel
526	691108	Screw (Regulator)	1005	593640	Fan-Flywheel
537	594915	Governor/Idle Spring (Yellow)	1012	592556	Retainer-Link
540	594325	Plate-Baffle	1013	690954	Nipple-Oil Filter
552	796638	Bushing-Governor Crank	1017	796214	Screen-Oil Pump
552A	690553	Bushing-Governor Crank	1022	690971	Gasket-Rocker Cover
562	690311	Screw (Governor Control Lever)	1023	793146	Cover-Rocker (Cylinder #1)
573	594902	Plate-Back	1023A	499600	Cover-Rocker (Cylinder #2)
584	594164	Cover-Breather Passage	1024	796220	Pump-Oil
601	691038	Hose-Clamp (Black)	1026	690981	Rod-Push (Exhaust) (Steel)
601A	791850	Hose-Clamp (Green)	1026A	690982	Rod-Push (Intake) (Aluminum)
615	698290	Retainer-Governor Shaft	1027	696854	Filter-Oil
616	691045	Crank-Governor	1029	690972	Arm-Rocker
617	594209	Seal-O Ring (Intake Manifold)(Green) (Pack of 2)	1029A	807323	Arm-Rocker
617A	691917	Seal-O Ring (Intake Manifold) (Red)	1036		Label-Emissions (Available from a Briggs & Stratton Authorized Dealer)
618	594326	Screw (Baffle Plate)	1040	791237	Plate-Trim
633	699813	Seal-Choke/Throttle Shaft (Choke Shaft)	1051	691265	Ring-Retaining
633A	699813	Seal-Choke/Throttle Shaft (Throttle Shaft)	1059	698516	Kit-Screw/Washer (Alternator)
635	66538s	Boot-Spark Plug	1070	593638	Screw (Flywheel Fan)
654	690958	Nut (Carburetor) (Serrated)	1090	691293	Retainer-Brush
668	691500	Spacer (Rotating Screen)	1095	594214	Gasket Set-Valve
668A	691215	Spacer (Rotating Screen)	1100	791959	Pivot-Rocker Arm
684	691108	Screw (Breather Passage Cover)	1119	691183	Screw (Alternator)
691	790574	Seal-Governor Shaft	1127	695407	Screw (Float Bowl)
697	591909	Screw (Drive Cap)	1146	690991	Screw (Choke Shaft)
703	691010	Clip (Fuel Line)	1193	592577	Screw (Thermostat) (#10-32x.6)
703A	592584	Clip (EVAP Hose)	1263	594166	Reed-Breather
718	690959	Pin-Locating	1264	594165	Screw (Breather Reed)
718A	594988	Pin-Locating (Spiral)	1329	N/A	Replacement Engine
729	593526	Clip-Wire	1330	N/A	Repair Manual
741	690980	Gear-Timing	1386	592580	Vane-Air
742	690328	Retainer-E Ring	1474	592579	Stud (Air Vane)
750	796208	Screw (Oil Pump Cover)	1475	592578	Nut (Air Vane)
783	592600	Gear-Pinion (Steel)			
789	591392	Harness-Wiring			
798	697890	Screw (Rocker Arm)			
801	691283	Cap-Drive			
802	691286	Cap-End			
842	691031	Seal-O Ring (Dipstick Tube)			
847	499602	Dipstick/Tube Assembly			
850	100106	Sealant-Liquid			
851	493880s	Terminal-Spark Plug			
865	591667	Cover-Air Guide (Valley)			
868	690968	Seal-Valve			
883	690970	Gasket-Exhaust			
914	691127	Screw (Rocker Cover)			
918	596163	Hose-Vacuum (Rocker Cover #1)			
918A	799160	Hose-Vacuum (EVAP)			
943	796222	Seal-O Ring (Oil Pump Cover)			

**NOTE:** All component dimensions given in U.S. inches  
 1 inch = 25.4 mm

Carburetor Overhaul Kit Key No. 121  
 Engine Gasket Set Key No. 358  
 Valve Gasket Set Key No. 1095

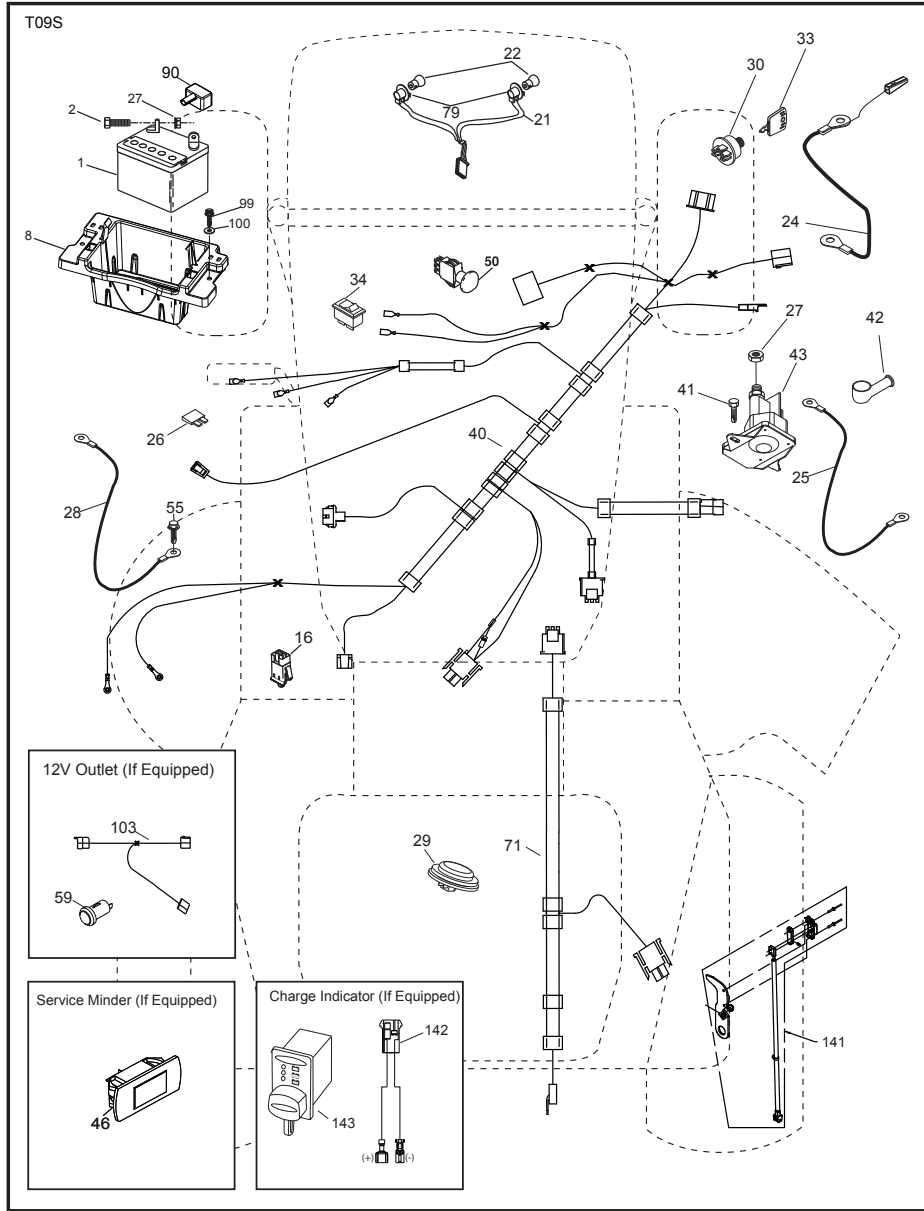
SCH12

**TRACTOR -- MODEL NUMBER 917.204081**



TRACTOR -- MODEL NUMBER 917.204081

ELECTRICAL



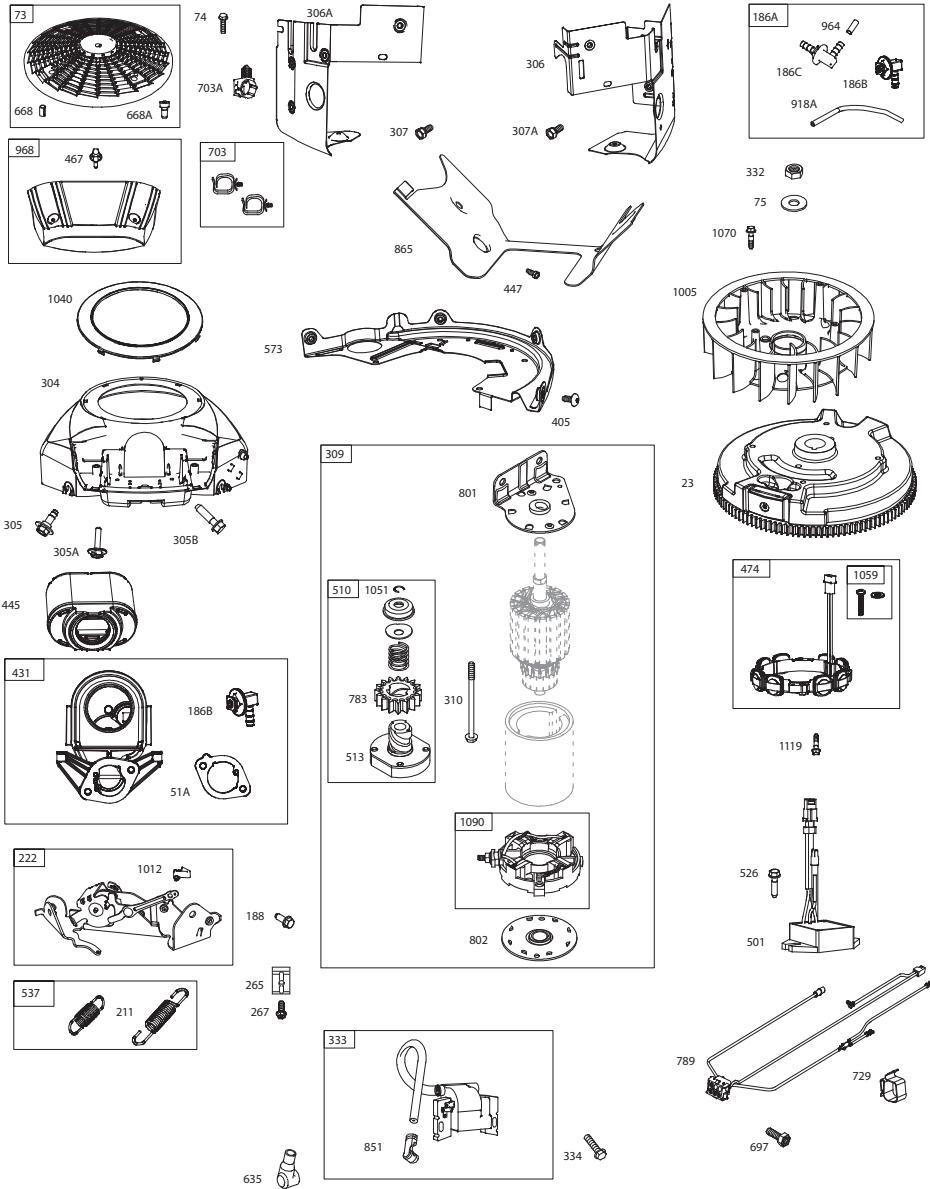
TRACTOR -- MODEL NUMBER 917.204081  
BRIGGS ENGINE -- MODEL NUMBER 44U877, TYPE NUMBER 0007-G1

KEY NO.	PART NO.	DESCRIPTION	KEY NO.	PART NO.	DESCRIPTION
1	594970	Cylinder Assembly	137	698781	Gasket-Float Bowl
2	797673	Bushing/Seal Kit (Magneto Side)	141	595218	Kit-Choke Shaft
3	391086s	Seal-Oil (Magneto Side)	186A	799158	Connector-Hose (EVAP)
4	594974	Sump-Engine	186B	845141	Connector-Hose (EVAP)
5	799088	Head-Cylinder (Cylinder #1)	186C	594428	Connector-Hose (EVAP)
5A	799089	Head-Cylinder (Cylinder #2)	187	791766	Line-Fuel (Cut to Required Length)
7	693997	Gasket-Cylinder Head	188	691108	Screw (Control Bracket)
11	594163	Tube-Breather	192	690083	Adjuster-Rocker Arm
12	594195	Gasket-Crankcase (Before Date Code: 15071600) (Includes 12 Crankcase Cover/Sump Bolts)	211	593724	Spring-Governed Idle (Black)
13	592244	Screw (Cylinder Head)	212	792265	Link-Throttle
15	690946	Plug-Oil Drain	216	796229	Link-Choke
16	796256	Crankshaft	216A	595217	Link-Choke
20	795387	Seal-Oil (PTO Side)	217	592585	Spring-Choke Return
22	694966	Screw (Crankcase Cover/Sump)	217A	799771	Spring-Choke Return
23	594169	Flywheel	219	793338	Gear-Governor
24	222698s	Key-Flywheel (Aluminum)	220	799772	Washer (Governor Gear)
25	793560	Piston Assembly (Standard) (Flat Top)	221	841026	Cup-Governor
	793563	Piston Assembly (.020" Oversize) (Flat Top)	222	592555	Bracket-Control
26	792026	Ring Set (Standard)	227	798856	Lever-Governor Control
	792073	Ring Set (.020" Oversize)	231	690718	Screw (Choke Valve)
27	690975	Lock-Piston Pin	232	795915	Spring-Governor Link
28	593650	Pin-Piston	240	845125	Filter-Fuel
29	796209	Rod-Connecting	255	690721	Bushing-Choke Shaft
32	690976	Screw (Connecting Rod)	265	691024	Clamp-Casing
33	793557	Valve-Exhaust	267	792629	Screw (Casing Clamp)
34	793556	Valve-Intake	276	695410	Washer-Sealing
35	694865	Spring-Valve (Intake)	287	697820	Screw (Dipstick Tube)
36	694865	Spring-Valve (Exhaust)	291	592581	Thermostat
42	499586	Keeper-Valve	304	591668	Housing-Blower
45	690977	Tappet-Valve	305	594618	Screw (Blower Housing) (1/4-20x.5)
46	797242	Camshaft	305A	790690	Screw (Blower Housing) (#10-16x.6)
48	N/A	Short Block	305B	691061	Screw (Blower Housing) (#8-32x.8)
50	594206	Manifold-Intake	306	591666	Shield-Cylinder (Cylinder #2)
51	594204	Gasket-Intake	306A	796852	Shield-Cylinder (Cylinder #1)
51A	594203	Gasket-Intake	307	691003	Screw (Cylinder Shield) (#10-24x.4)
51B	690949	Gasket-Intake	307A	691108	Screw (Cylinder Shield) (1/4-20x.6)
53	690951	Stud (Carburetor)	309	592599	Motor-Starter (Steel Ring Gear)
54	699816	Screw (Intake Manifold) (1/4-20x.9)	310	690323	Screw (Starter Motor)
73	494439	Screen-Rotating	332	691059	Nut (Flywheel)
74	698425	Screw (Rotating Screen)	333	592846	Armature-Magneto
75	691056	Washer (Flywheel)	334	691061	Screw (Magneto Armature)
95	690718	Screw (Throttle Valve)	337	491055s	Plug-Spark
98	695408	Kit-Idle Speed	358	594213	Gasket Set-Engine
104	694918	Pin-Float Hinge	377	690979	Key-Woodruff
105	698537	Valve-Float Needle	385	797409	Screw (Fuel Pump)
117	842585	Jet-Main (Standard)	387	808656	Pump-Fuel
118	792296	Jet-Main (High Altitude) (5000 > 9000 Feet)	404	690442	Washer (Governor Crank)
121	594212	Kit-Carburetor Overhaul	405	594937	Screw (Back Plate) (1/4-20x.6)
125	596375	Carburetor	415	794903	Plug
127	699810	Plug-Welch	431	596034	Elbow-Intake
131	594210	Kit-Throttle Shaft	445	593240	Filter-Air Cleaner Cartridge
133	694914	Float-Carburetor	447	691003	Screw (Air Guide Cover) (#10-24x.4)
135	591701	Tube-Fuel Transfer	467	790697	Knob-Air Cleaner
			474	592830	Alternator
			501	593490	Regulator
			505	691029	Nut (Governor Control Lever)

**TRACTOR - - MODEL NUMBER 917.204081  
BRIGGS ENGINE - - MODEL NUMBER 44U877, TYPE NUMBER 0007-G1**

**ELECTRICAL**

**TRACTOR - - MODEL NUMBER 917.204081**

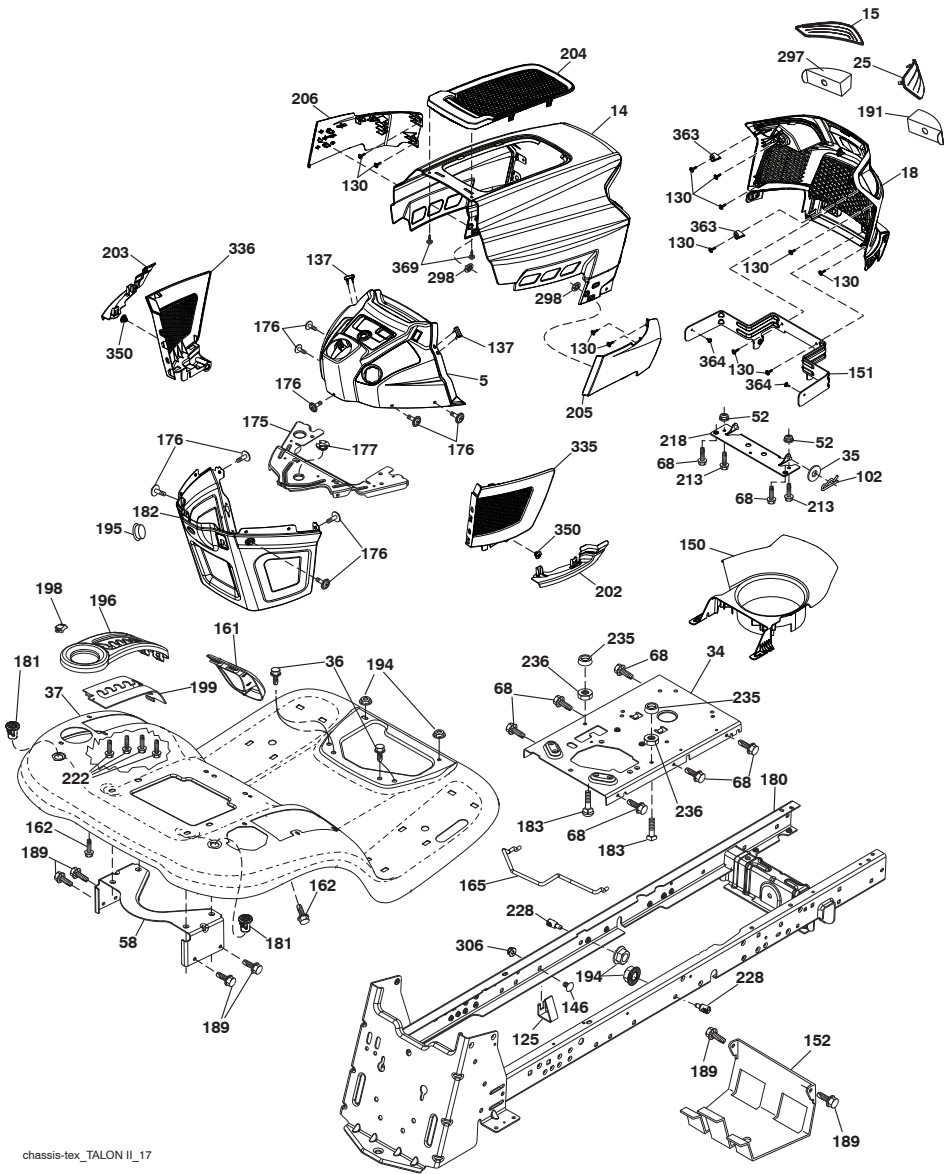


KEY PART NO.	NO.	DESCRIPTION
1	163465	Battery
2	74760412	Bolt Hex Head 1/4-20 x 3/4
8	587205101	Box Battery
16	176138	Switch Interlock Push-In
21	400252	Harness Socket Light w/4152J
22	4152J	Bulb Light
24	585555601	Cable Battery
25	585555501	Cable Starter
26	175158	Fuse
27	73510400	Nut Keps Hex 1/4-20 unc
28	416588	Cable, Ground
29	401545	Switch, Seat
30	193350	Asm. Smart Ignition
33	411932	Key/Chain
34	110712X	Switch Light/Reset
40	501132901	Harness Ign. Dash
41	17720408	Screw 1/4-20 x 1/2
42	131563	Cover, Terminal
43	582042801	Solenoid
46	586161801	Gauge Hourmeter
50	582107602	Switch, PTO
55	17060512	Screw 5/16-18 x 3/4
71	194276	Harness Ignition Chassis
79	175242	Socket Asm. Bulb
90	435395	Cover Terminal Battery
99	17670412	Screw Hexwsh Thdrol 1/4-20 x 3/4
100	19091416	Washer 9/32 x 7/8 x 16 Ga.
141	421225	Kit

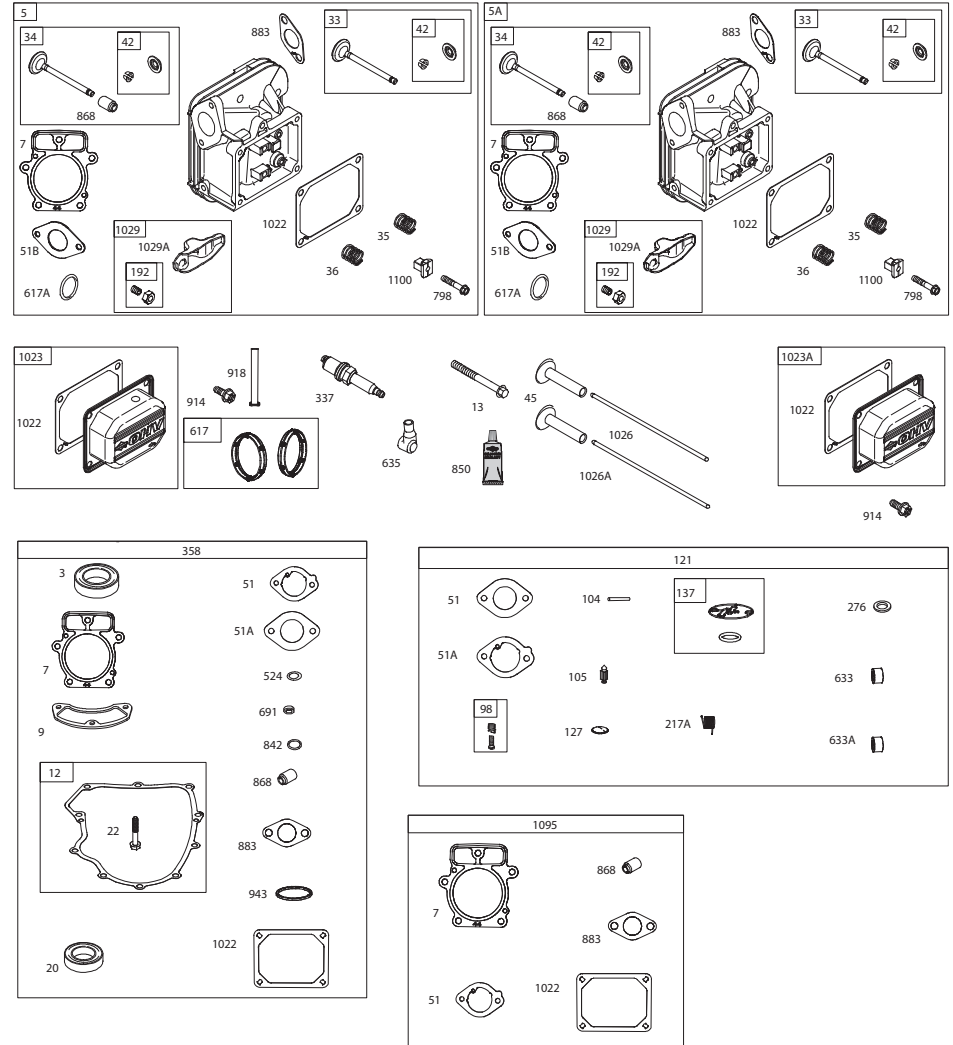
**NOTE:** All component dimensions given in U.S. inches  
1 inch = 25.4 mm



**TRACTOR - - MODEL NUMBER 917.204081**  
**CHASSIS AND ENCLOSURES**

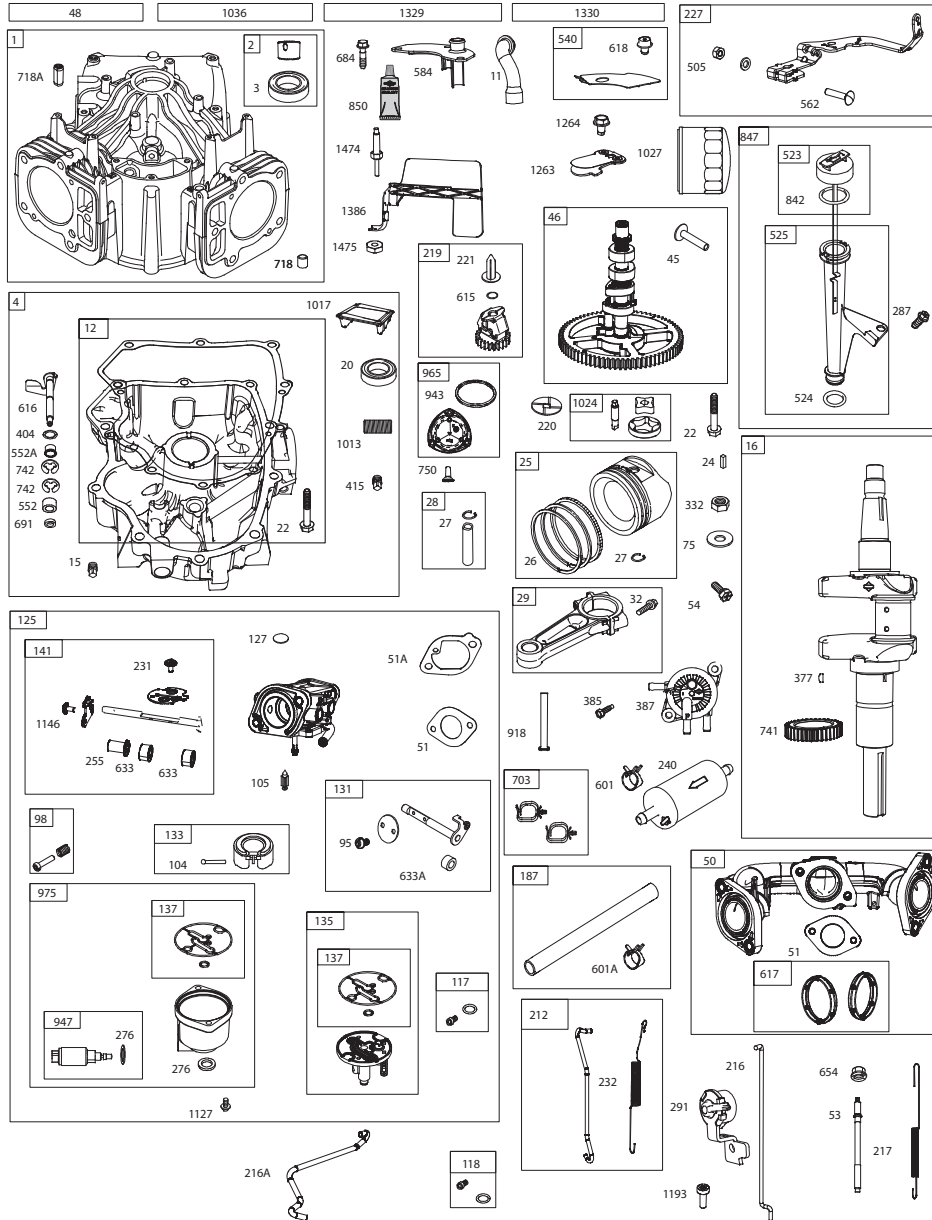


**TRACTOR - - MODEL NUMBER 917.204081**  
**BRIGGS ENGINE - - MODEL NUMBER 44U877, TYPE NUMBER 0007-G1**



**TRACTOR - - MODEL NUMBER 917.204081**  
**BRIGGS ENGINE - - MODEL NUMBER 44U877, TYPE NUMBER 0007-G1**

**TRACTOR - - MODEL NUMBER 917.204081**  
**CHASSIS AND ENCLOSURES**



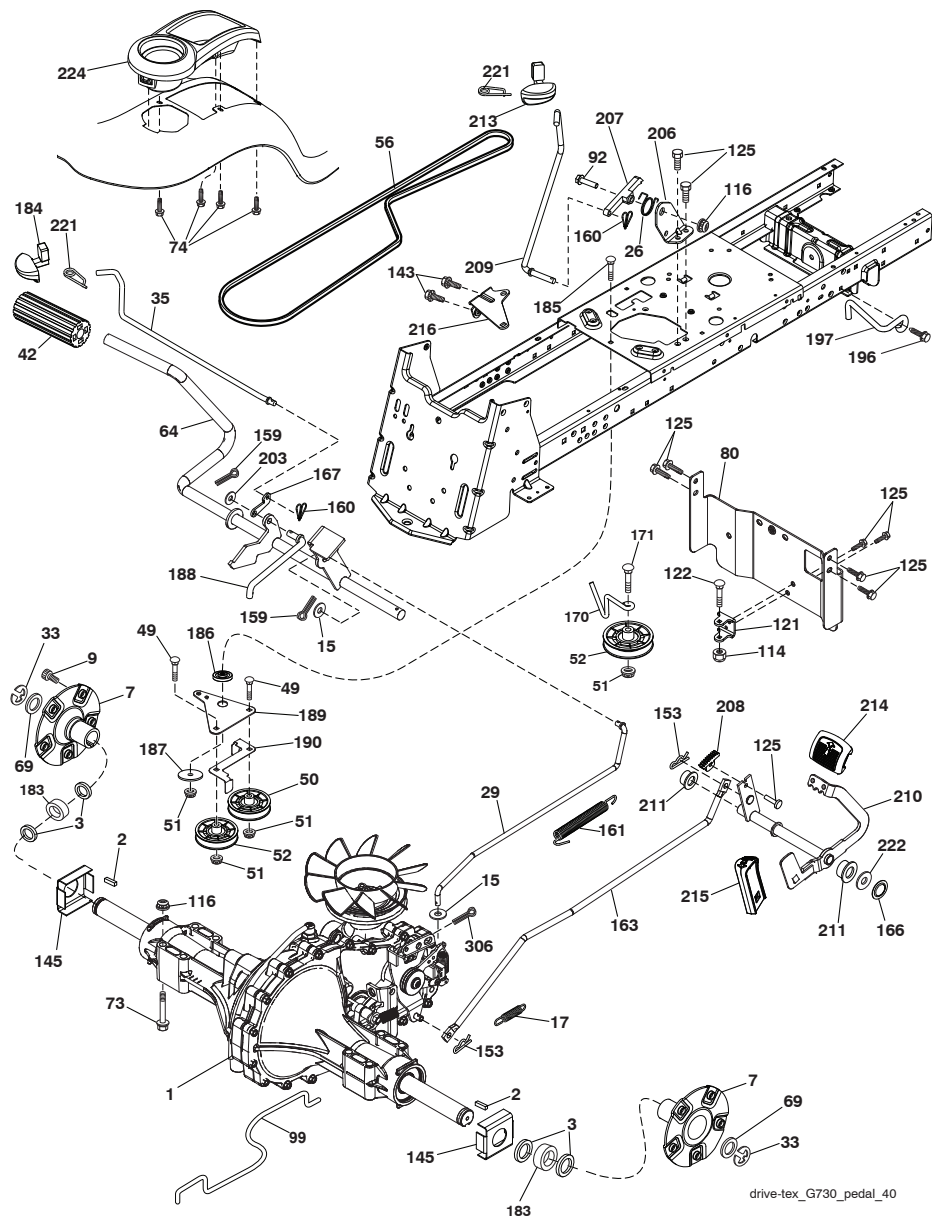
**KEY PART  
NO. NO.**

**DESCRIPTION**

5	501607201	Dash
14	580354406	Hood
15	580485601	Lens LH
18	580485302	Grille
25	580484501	Lens RH
34	580910801	Plate engine
35	191111116	Washer 11/32 x 11/16 x 16 Ga.
36	17060512	Screw 5/16-18 x 3/4
37	400009X615	Fender
52	736805000	Nut Crown Lock 5/16-18
58	194314	Bracket
68	17490508	Screw Thdrol 5/16-18 x 1/2
102	4497H	Retainer Spring 1"
125	581684801	Clip Fuel Line
130	416358	Screw # 10 x .750 BOS Thread
137	407590	Bumper Dash
146	581857901	Bolt
150	585238002	Duct Heat Hood
151	580663302	Bracket Pivot
152	199535	Shield Browning/Debris
161	193097X428	Console Fuel Window
162	142432	Screw Hex Wsh Hi-Lo 1/4 x 1/2
165	196826	Support Tank
175	196304	Crossmember
176	400776	Screw 10-24 x 5/8 Wshd Qdrx
177	195228	Bushing Steering
180	195477	Chassis
181	193102X428	Bushing Mtg. Fender Crgo.
182	406859	Dash Lower
183	74520520	Bolt 5/16-18 x 1-1/4
189	17000512	Screw 5/16-18 x 3/4
191	580485101	Mylar Headlight/Reflective LensRH
194	739005000	Nut Lock Hex Flange 5/16-18
195	401556X428	Plug Hole Dash 12V Adapter
196	419830	Console Asm. Deck Lift
198	197300X667	Indicator Deck Lift
199	419350	Plate Deck Lift
202	580485001	C-Closeout Lwr Trm RH
203	580484801	C-Closeout Lwr Trm LH
204	580484701	Top Vent Hood
205	580843706	Assembly Corner RH
206	580843806	Assembly Corner LH
213	74760512	Bolt hex HD 5/16-18 unc x 3/4
218	580897301	Pivot Hood Assy
222	137729	Screw
228	195161	Stud Fastener
235	406129	Spacer Fender
236	739305000	Nut Center Lock 5/16-18
297	580484901	Mylar Headlight/Reflective Lens LH
298	580851001	Nut Push
306	739006000	Nut Lock
335	580484602	C-Side Closeout RH
336	580484402	C-Side Closeout LH
350	445143	Clip X-Mass Tree
363	580724501	Cap Talon Grille
364	17060408	Screw
369	421756	Screw
--	586064201	Guard Brush

**NOTE:** All component dimensions given in U.S. inches  
 1 inch = 25.4 mm

**TRACTOR - - MODEL NUMBER 917.204081**  
**GROUND DRIVE**



**TRACTOR - - MODEL NUMBER 917.204081**  
**HYDRO GEAR TRANSAXLE - - MODEL NUMBER G7-BCBB-1XDC-1FCA**

KEY PART NO.	NO.	DESCRIPTION	KEY PART NO.	NO.	DESCRIPTION
57	169870	Ring, Retaining 1.575 Internal	(90)		Ring, Retaining 2.06 Internal
60	421195	Bearing, Thrust	(96)		Seal, Lip 25 X 52 X 10 Tc (Gray)
64	421196	Assembly, Block	(130)		Tube, Connecting
		Block	(132)		O-Ring, -.137, .103 X 2.050
		Spring	(155)		Ring, Spiral Ret .875
		Seat Washer	201	421220	Kit, Center Section, Lh, Chrg
		Piston	20		Center Section, Lh, Chrg
65	173159	Bearing, Thrust Ball 30 X 52 X 13	(22)		Plate, Bypass
69	421197	Assembly, Block	24		Check Plug
		Block	25		Check Plug
		Spring	(26)		Seal, Plug 1.250 X .250
		Seat Washer	(27)		Hfhcs 3/8-16 X 1.5 (Patch) Brg, Jrnl
		Piston	135		Ball, Steel 7/16"
70	170404	Washer, .63 X 1.0 X .05	136		Spring, Relief .42 X .75
71	170405	Ring, Retaining .625 External	137		Pin, Spring .125 X .875
72	421198	Gear, 14t	202	421221	Kit, Charge Relief
73	421199	Shaft, Motor	135		Ball Steel 7/16"
74	170433	Washer, .72 X 1.16 X .04	136		Spring, Relief .42 X .75
80	170418	Washer, .5 X 1.0 X .03	137		Pin, Spring .125 X .875
81	421200	Gear, 45t	203	421222	Kit, Charge
82	421201	Gear, 11t	(131)		Gerotor Assembly (1.9cc/Rev)
83	170394	Pin, Jackshaft	(132)		O-Ring 137, .103 X 2.050
90	169539	Ring, Retaining 2.06 Internal	(133)		Cover, Charge Pump
91	421202	GEar, 60t	(134)		Screw, Hex Flange 1/4-20 X .75
92	421203	Spacer, 1.04 X 1.65 X .22	207	422128	Kit, Fan/Pulley
94	421204	Shaft, Axle 1.00 X 14.48, Keyed	(120)		Fan Recess 7.0 (10 Blade)
95	169535	Bearing, Ball 1.0 X 52 X 15	(121)		Pulley 3.86 Inch
96	161157	Seal, Lip 25 X 52 X 10 Tc (Gray)	(122)		Hex Lock Nut 1/2-20 (With Patch)
120	421205	Fan, Recess 7.0 (10 Blade)	(123)		Washer, Slotted
121	422126	Pulley 3.86 Inch	210	421224	Kit, Input Shaft
122	150794	Hex Lock Nut 1/2-20 (With Patch)			Shaft, Input
123	199658	Washer, Slotted			Brg, Ball 17 X 40 X 12 Opn 6203
130	421207	Tube, Connecting			Ring, Ret Wire .561 Id
131	169531	Gerotor Assembly (1.9cc/Rev)	212	178329	Kit, Brake-Yoke
132	421208	O-Ring, -.137, .103 X 2.050			Bolt, Square Head
133	421209	Cover, Charge Pump			Brake-Yoke
134	178343	Screw, Hex Flange 1/4-20 X .75	214	421225	Kit, G700 Ros
140	421210	Spacer, .320 X 1.005 X .179	141		Assembly Rtn, Neutral
142	421211	Shcs 5/16-24 X 1 Patch	156		Retainer, Switch
147	421212	Spring, Extention Rtn-44 Lbs	157		Rivet, 5/32
152	421213	Gear, Bevel 14t Spline Id	158		Switch, Rcs
153	421214	Gear, Bevel 10t	215	421226	Kit, G700 Rtn/Ros
154	421215	Pin, .499 X 1.20	44		Arm, Control
155	421216	Ring, Spiral Ret .875	(46)		Screw, 5/16-18 X 1
170	142883	Puck, Brake	145		Assembly, Rtn
171	421217	Rotor, Brake	146		Washer, .343 X 1.500 X .062
172	142882	Plate, Puck	157		Rivet, 5/32
175	142892	Bolt, Hex Head 1/4-20 X 1 W/Patch	159		Clip, Actuator
176	170410	Bolt, Hex Head 1/4-20 X 2 W/Patch	216	421227	Kit, Breather
177	170409	Pin, Brk .31 X .73 Patch			Fitting, 9/16 Sae
178	170417	Spring, Comp Brake Anti-Drag			Cap, Barbed Vent
179	178330	Arm, Brake	217	421228	Kit, Bypass
181	170415	Nut, Castle 5/16-24 PI	34		Bypass Arm
182	170416	Pin, Cotter 3/32 X 3/4	(35)		Retaining Ring
183	170411	Spacer, .26 X .57 X .87	218	421229	Kit, Filter Guard
184	142884	Washer, .27 X .88 X .12	105		Hfhcs 1/4-20 X .75
185	178335	Spring, Brake Arm Bias	106		Guard, Filter, Lh
191	421218	Tube, .16 X .28 X 9.25	219	422129	Kit, Damper
200	421219	Kit, Seal	115		Damper
		Pin .25 X .375	116		Bracket
(10)		Seal, Lip .625 X 1.0	117		Stud, Threaded Ball
(26)		Seal, Plug 1.250 X .250	118		Washer, 5/16 Lock
(30)		Seal, Lip .375 X .75 X .25	119		Nut, Hex 5/16-18
(31)		Ring, Retaining .375 External			
(33)		Ring, Retaining .750 Internal			
(35)		Ring, Retaining .375 External			
(41)		Seal, Lip 18 X 32 X 7			
(46)		Twhcs 5/16-24 X 1.00 (Patch)			
(56)		Seal, Lip 17 X 40 X 7			
(57)		Ring, Retaining 1.575 Internal			
(71)		Ring, Retaining .625 External			

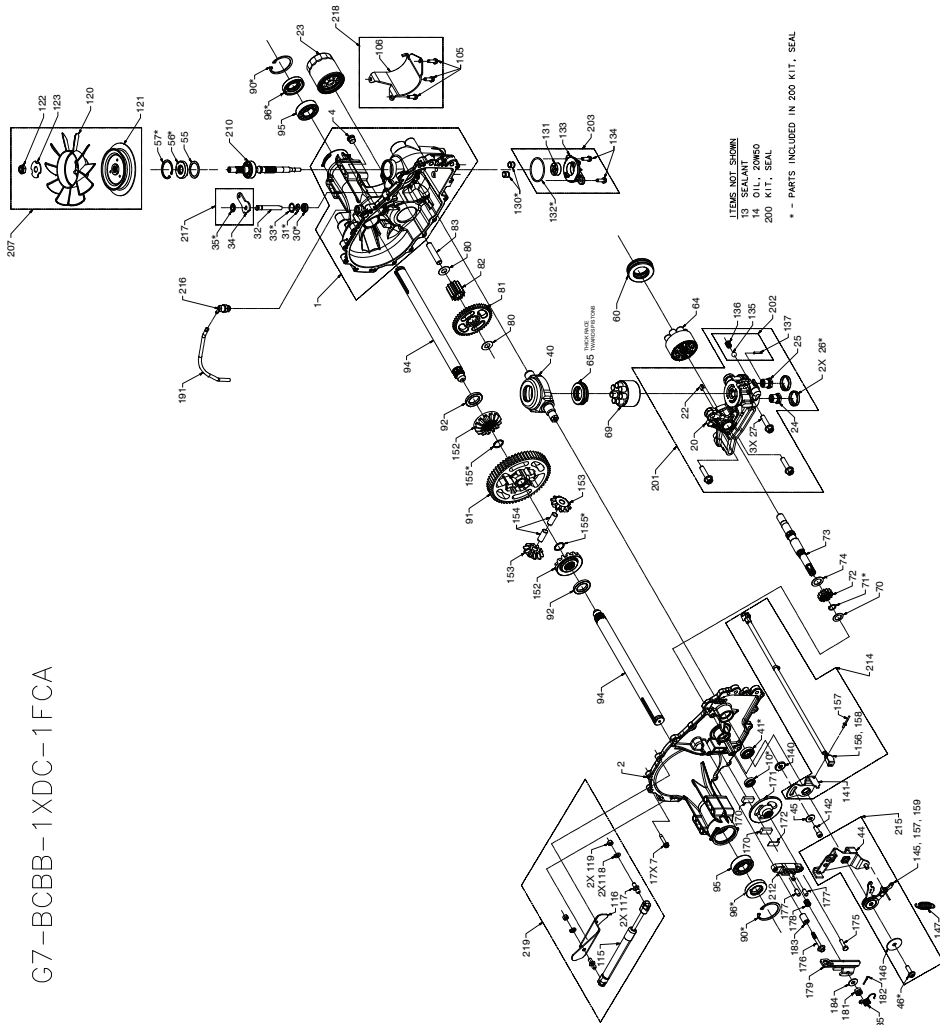
\*( ) \* Indicates that part is listed elsewhere and is available as an individual part.

**NOTE:** All component dimensions given in U.S. inches  
 1 inch = 25.4 mm



TRACTOR - - MODEL NUMBER 917.204081

HYDRO GEAR TRANSAXLE - - MODEL NUMBER G7-BCBB-1XDC-1FCA



ITEMS NOT SHOWN  
 13 SEALANT  
 14 OIL, 20W50  
 200 KIT, SEAL  
 \* - PARTS INCLUDED IN 200 KIT, SEAL

G7-BCBB-1XDC-1FCA

KEY PART NO.	NO.	DESCRIPTION
1	421183	Kit, Housing Main
(4)		Plug 9/16-18 (Metal)
		Housing, Main
		Pin, .25 X .375
		Bushing, .624 X .719 X .562
		Bushing, .865 X .985 X .790
		Bearing, Flange 1.0 X 1.376 X .99
2	421184	Kit, Housing, Side
		Housing, Side
		Bushing, .624 X .729 X .562
		Bushing, .865 X .985 .790
		Bearing, Flange 1.0 X 1.376 X .99
4	170434	Plug 9/16-18 (Metal)
7	170356	Hfhcs 1/4-20 X 1.25"
10	417764	Seal, Lip .625 X 1.0
13	178322	Tube, Sealant

KEY PART NO.	NO.	DESCRIPTION
14		Oil, 20w50
22	421185	Plate, Bypass
23	421186	Filter, Oil
26	421187	Seal, Plug 1.250 X .250
27	421188	Hfhcs 3/8-16 X 1.5 (Patch)
30	421189	Seal, Lip .375 X .75 X .25
31	421190	Ring, Retaining .375 External
32	421191	Rod, Bypass
33	421192	Ring, Retaining .750 Internal
35	421193	Retaining Ring
40	170354	Trunnion, Swashplate
41	170363	Seal, Lip 18 X 32 X 7
45	142884	Washer, .24 X .88 X .06
46	421194	Twhcs 5/16-24 X 1.00 (Patch)
55	170360	Washer, 1.23 X 1.56 X .04
56	170361	Seal, Lip 17 X 40 X 7

TRACTOR - - MODEL NUMBER 917.204081

GROUND DRIVE

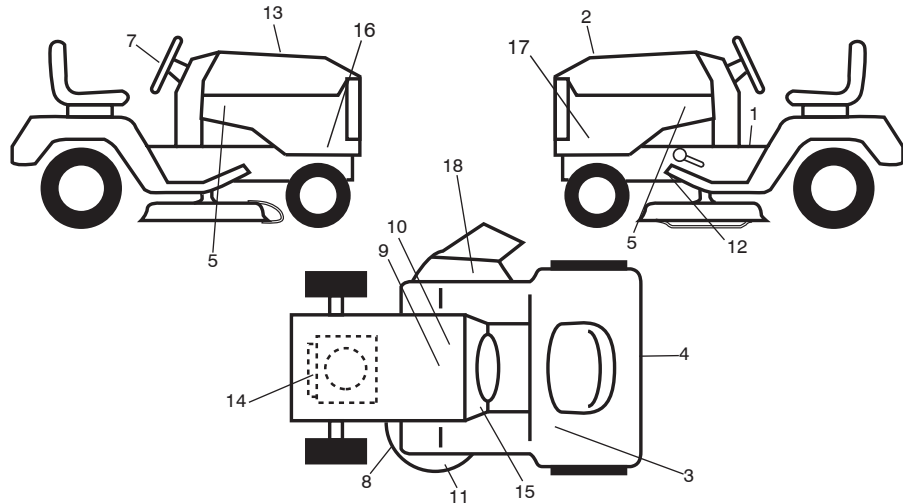
KEY PART NO.	NO.	DESCRIPTION	KEY PART NO.	NO.	DESCRIPTION
1	-----	Transaxle, Hydro G7-BCBB-1XDC-1FCA (420331) (See transaxle breakdown.)	167	405257	Latch Brake Parking
2	539912757	Key, .25 x 1.25	170	194322	Keeper V- Idler Center Span
3	7563R	Washer Thrust Axle Hardened	171	72110616	Bolt RdHd SQNK 3/8-16 unc x 2
7	586935402	Hub Asm. Wheel	183	501051501	Spacer Split
9	140080	Bolt Hub Wheel	184	196439X428	Handle Parking Brake
15	19131316	Washer 13/32 x 13/16 x 16 Ga.	185	72110622	Bolt RdHd 3/8-16 unc x 2-3/4 Gr. 5
17	197296	Spring, Brake	186	194321	Spacer Retainer
26	199679	Spring Return Cruise	187	19133210	Washer
29	418186	Rod, Brake	188	582217001	Link Clutch Ground Drive Long
33	12000053	Ring E	189	194317	Bellcrank Ground Drive
35	583864501	Rod, Brake, Park	190	194318	Keeper Bellcrank Ground Drive
42	8883R	Cover, Foot Pedal	196	17000616	Screw 3/8-16 x 1
49	72110614	Bolt	197	585658601	Bracket Clutch Anti-Rotation
50	194327	Pulley Idler Flat	203	19111116	Washer 11/32 x 11/16 x 16 Ga.
51	73900600	Lock Nut 3/8-16	205	123800X	Washer 1-1/32 x 1-5/8 x 16 Ga.
52	194326	Idler V-Groove	206	448596	Bracket Mount Latch Cruise
56	140294	V-Belt, Drive	207	587031401	Latch Control Cruise
64	197865	Shaft Asm. Pedal Brake Control	208	197869	Gear Sector Control Cruise
73	74490548	Bolt Hex 5/16-18 x 3 Gr. 5	209	199592	Rod Control Cruise
74	142432	Screw 1/4 x 1/2	210	197860	Rocker Asm. Pedal Control
80	418184	Strap Torque	211	120183X	Bearing Nylon
92	74760520	Bolt 5/16-18 x 1/2	213	196441X428	Knob Control Cruise
99	418188	Spring Bypass	214	421263	Pedal Forward
114	73800500	Nut Lock Hex W/Ins. 5/16-18 unc	215	197301X428	Pedal Reverse
116	73900500	Nut Lock Hex Flange 5/16-18	216	196131	Bracket Pulley Idler
121	175611	Bracket Strap Torque	221	403187	Retainer Spring Clip Handle
122	72010520	Bolt 5/16-18 x 2.50	222	79212010	Washer 21/32 x 1-1/4 x 10 Ga.
125	17000512	Screw 5/16-18 x 3/4	224	193099X428	Console Toolbox
143	17490508	Screw Thdrol 5/16-18 x 1/2	306	876020416	Pin Cotter
145	163168	Washer Axle Flange			
153	4497H	Retainer Spring			
159	76020412	Pin Cotter 1/8 x 3/4			
160	169484	Retainer Clip			
161	105709X	Spring, Return, Clutch			
163	418185	Rod Pedal Control			
166	429164	Nut Push .625			

**NOTE:** All component dimensions given in U.S. inches  
 1 inch = 25.4 mm



**TRACTOR - - MODEL NUMBER 917.204081**

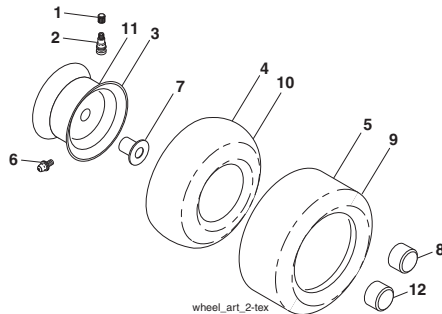
**DECALS**



KEY NO.	PART NO.	DESCRIPTION
1	581578801	Decal, Warning
2	585571401	Decal, Maintenance
3	581724201	Decal, Warn. Reserve Fuel
4	587390201	Decal, Fender
5	585767601	Decal, Hood
7	581894601	Decal, Steering
8	581580002	Decal, Mower Schematic
9	434996	Decal, Battery Warning
10	434995	Decal, Battery
11	581724502	Decal, Mower Caution
12	421534	Decal, Mower V-Belt Schematic
13	582458101	Decal Replacement

KEY NO.	PART NO.	DESCRIPTION
14	582522701	Decal Engine
15	586066301	Decal Dash
16	502094801	Decal, Sideskirt RH
17	502094901	Decal, Sideskirt LH
18	584904601	Decal, Deck/Deflect Warning
--	581724801	Decal Bypass
--	193279X428	Pad Footrest RH
--	193101X428	Pad Footrest LH
--	115862127	Manual, Operator's (English/Spanish)
--	589627201	Manual, Repair Parts
--	588799624	Manual, Quick Start Guide (English/Spanish)

**WHEELS & TIRES**



KEY NO.	PART NO.	DESCRIPTION
1	59192	Cap, Valve, Tire
2	65139	Stem, Valve
3	148736X613	Rim Assembly, Front
4	8134H	Tube, Front (Service Item Only)
5	106230X	Tire, Front 16 x 6.5-8
6	278H	Fitting, Grease (Front Wheel Only)
7	9040H	Bearing, Flange (Front Wheel Only)
8	501503101	Cap, Axle, Front
9	105588X	Tire, Rear 23 x 10.5-12
10	7154J	Tube, Rear (Service Item Only)
11	106277X613	Rim Assembly, Rear
12	501503101	Cap, Hub, GT, PM, Black, Rear
--	144334	Sealant, Tire (10 oz. Tube)

**NOTE:** All component dimensions given in U.S. inches  
1 inch = 25.4 mm

**TRACTOR - - MODEL NUMBER 917.204081**

**ENGINE**

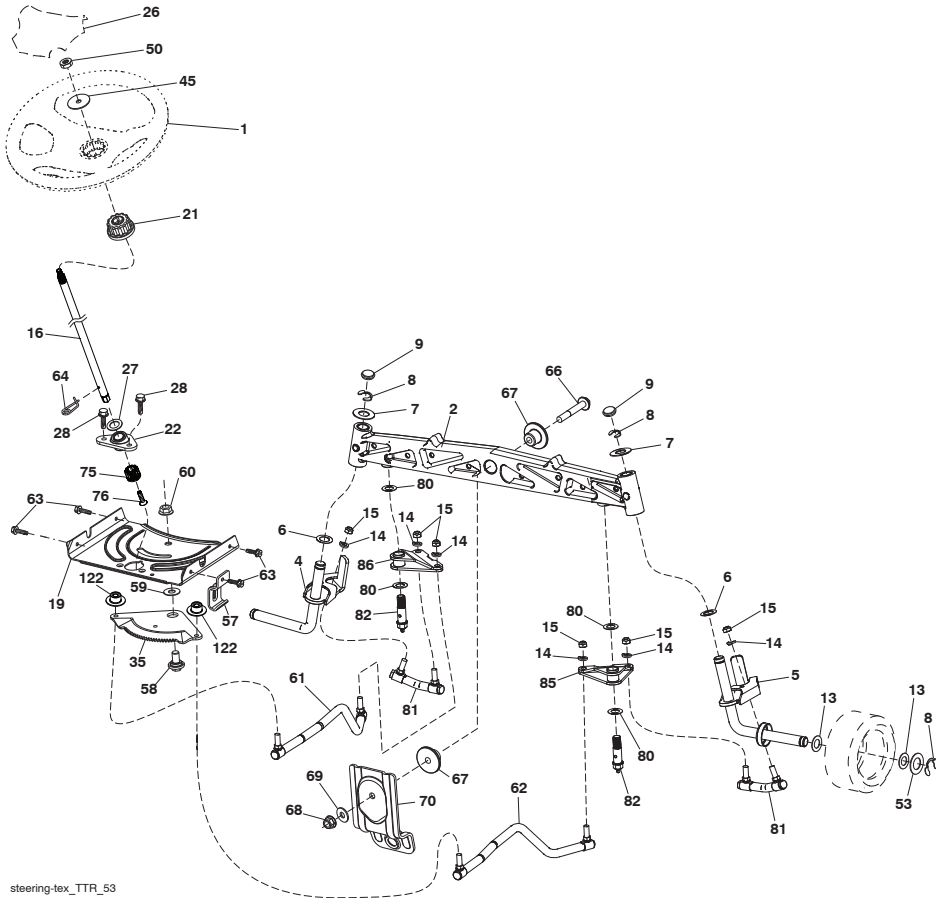
KEY NO.	PART NO.	DESCRIPTION
1	---	Engine Briggs Model No. 44U877-0007-G1 (589812401) (See engine breakdown.)
2	445962	Muffler
9	501832602	Keeper Belt Engine
11	587241401	Clutch Electric
12	194343	Pulley Engine
15	438021	Tank Fuel 4.0
18	585124802	Cap Asm Fuel
20	586219601	Control Throttle
21	416358	Screw 10 x .750 BOS Thread
28	401135	Fuel Line
29	137180	Spark Arrester Kit
37	123487X	Clamp Hose
41	126197X	Washer 1-1/2 OD x 15/32 ID x .250
42	10040700	Washer Lock 7/16
45	73510400	Nut Keps Hex 1/4-20 unc
62	434017	Shield Heat Muffler
69	165391	Gasket
70	581881101	Tube Exhaust LH
71	581881001	Tube Exhaust RH
79	183906	Screw 5/16-18 x 1
81	148456	Tube Drain Oil Easy
82	428287	Valve Drain Oil
84	17060620	Screw
85	501606901	Bolt Hex 7/16-20 x 3.0 x Gr. 5
90	17000616	Screw 3/8-16 x 1
91	187495	Bushing
102	198239	Bolt 5/16-18 unc x 1 w/Sems
116	539132624	Knob Shift
117	420828	Valve Fuel Reserve

**NOTE:** All component dimensions given in U.S. inches  
1 inch = 25.4 mm  
For engine service and replacement parts, call the toll free number for your engine manufacturer listed below:  
Briggs & Stratton 1-800-233-3723

**Engine Power Rating Information**

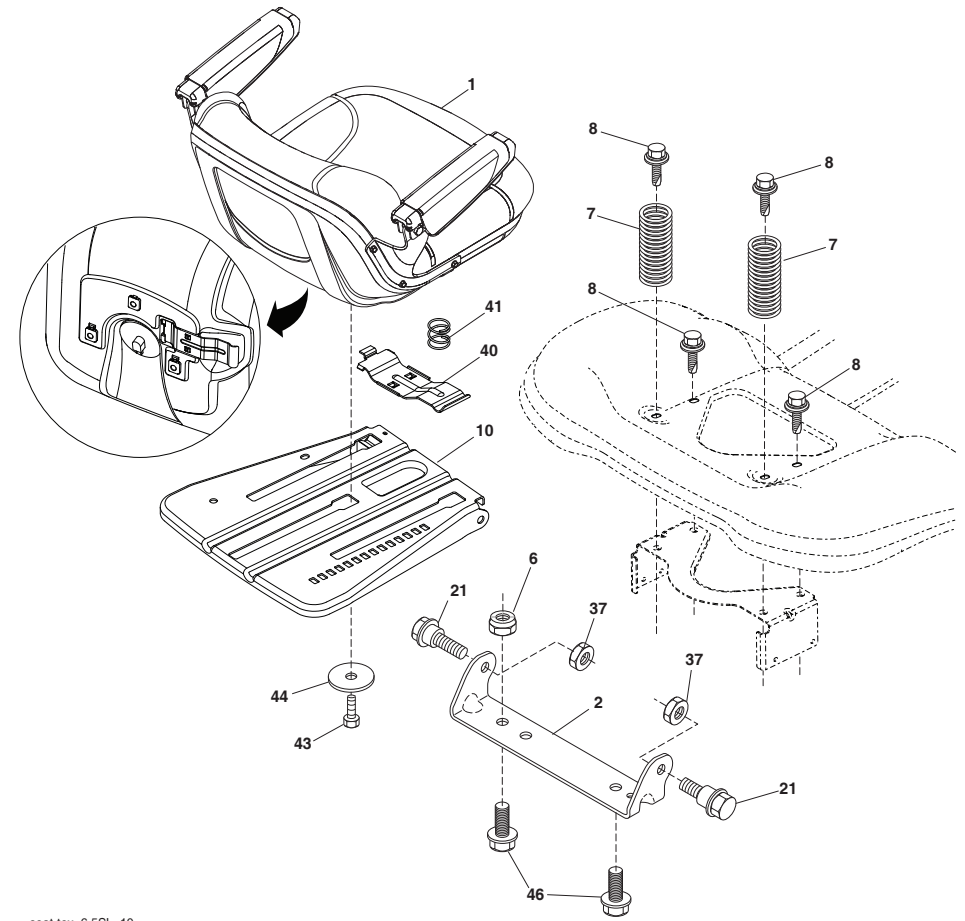
The gross power rating for individual gas engine models is labeled in accordance with SAE (Society of Automotive Engineers) code J1940 (Small Engine Power & Torque Rating Procedure), and rating performance has been obtained and corrected in accordance with SAE J1995 (Revision 2002-05). Torque values are derived at 3060 RPM; horsepower values are derived at 3600 RPM. Actual gross engine power will be lower and is affected by, among other things, ambient operating conditions and engine-to-engine variability. Given both the wide array of products on which engines are placed and the variety of environmental issues applicable to operating the equipment, the gas engine will not develop the rated gross power when used in a given piece of power equipment (actual "on-site" or net power). This difference is due to a variety of factors including, but not limited to, accessories (air cleaner, exhaust, charging, cooling, carburetor, fuel pump, etc.), application limitations, ambient operating conditions (temperature, humidity, altitude), and engine-to-engine variability. Due to manufacturing and capacity limitations, Briggs & Stratton may substitute an engine of higher rated power for this Series engine.

**TRACTOR -- MODEL NUMBER 917.204081**  
**STEERING ASSEMBLY**



steering-tex\_TTR\_53

**TRACTOR -- MODEL NUMBER 917.204081**  
**SEAT ASSEMBLY**



seat-tex\_6.5SL\_10

**KEY PART**  
**NO. NO.**

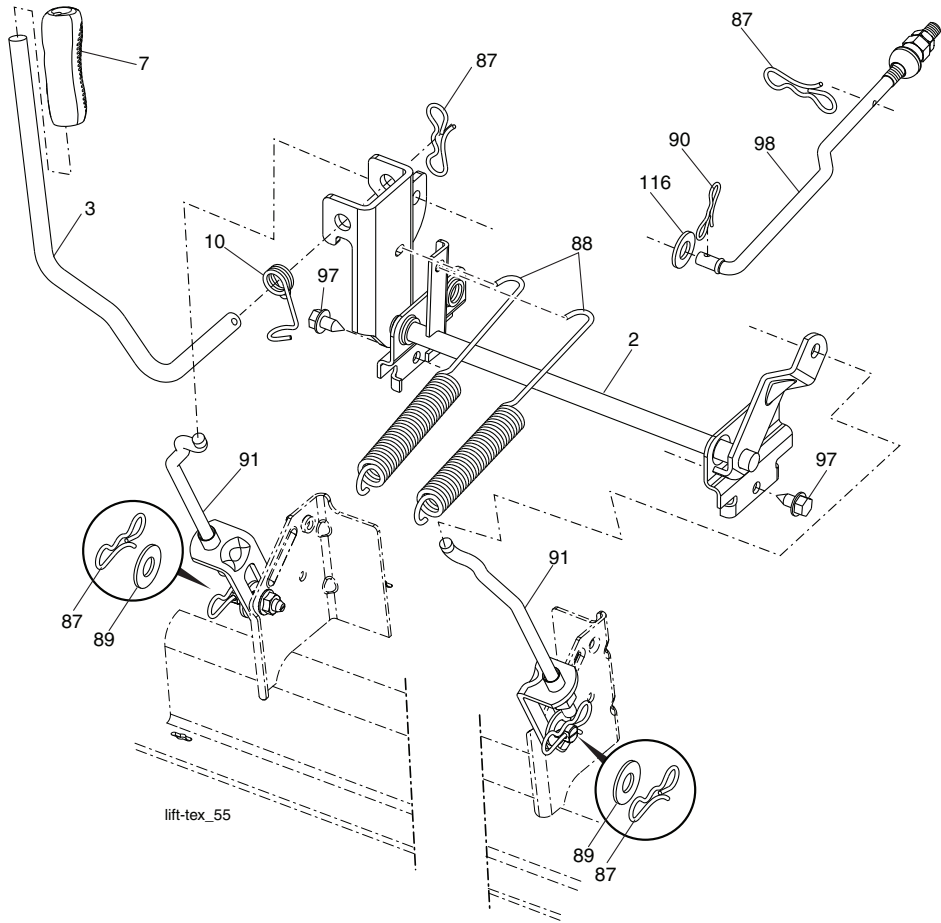
KEY PART NO.	NO.	DESCRIPTION
1	586507702	Seat
2	180166	Bracket Pivot Fender
6	73800600	Nut, Lock w/Ins. 3/8-16 unc
7	587613301	Spring, Seat Cprsn
8	171877	Bolt 5/16-18 unc x 3/4 w/Sems
10	196977	Pan, Seat
21	587907801	Bolt, Shoulder 5/16-18 x 5/8
37	73800500	Nut, Lock 5/16-18 unc

**KEY PART**  
**NO. NO.**

KEY PART NO.	NO.	DESCRIPTION
40	197661	Handle Slide Seat
41	198200	Spring Latch Seat
43	74760612	Bolt 3/8-16 unc x 3/4
44	19133812	Washer 13/32 x 2-3/8 x 12 Ga.
46	588090401	Bolt 3/8-16 x 1 1.25 OD

**NOTE:** All component dimensions given in U.S. inches  
 1 inch = 25.4 mm

**TRACTOR - - MODEL NUMBER 917.204081**  
**LIFT ASSEMBLY**



KEY PART NO.	NO.	DESCRIPTION
2	422027	Shaft Asm., Lift
3	419497	Lever Asm., Lift RH
7	445060X428	Grip, Lever
10	196314	Spring Torsion
87	194209	Pin Cotter 7/16 Bow Tie Lock
88	195304	Spring Lift Assist
89	19191912	Washer Clear Zinc
90	194208	Pin Cotter 5/16 Bow Tie Lock

KEY PART NO.	NO.	DESCRIPTION
91	403407	Link Lift Asm. Rear
97	17000612	Screw 3/8-16 x .75 R.Z
98	195264	Link Asm. Susp. Front Mower
116	19151516	Washer 15/32 x 15/16 x 16 Ga.

**NOTE:** All component dimensions given in U.S. inches  
 1 inch = 25.4 mm

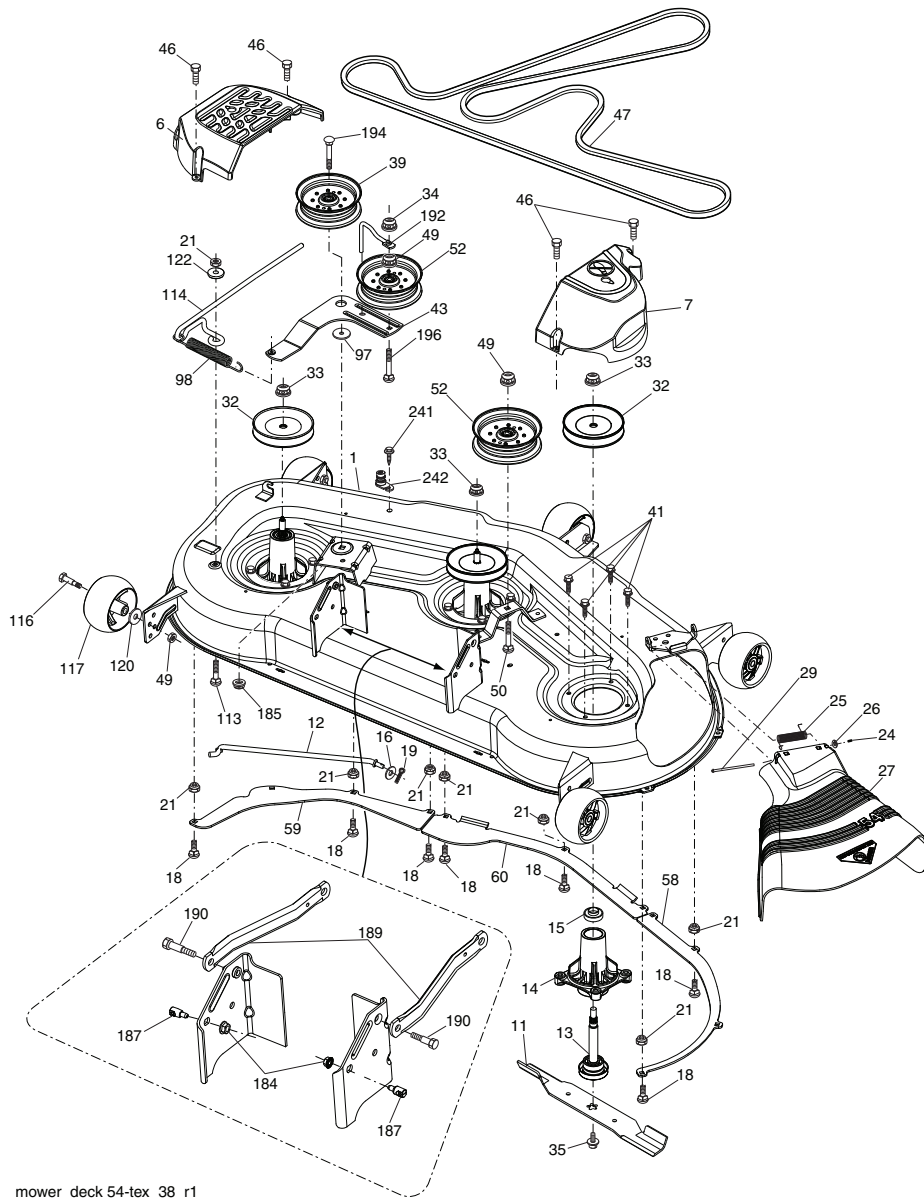
**TRACTOR - - MODEL NUMBER 917.204081**  
**STEERING ASSEMBLY**

KEY PART NO.	NO.	DESCRIPTION
1	414851X428	Wheel, Steering
2	436870	Axle Asm., Front
4	436873	Spindle Asm., LH
5	436874	Spindle Asm., RH
6	6266H	Washer Thrust 0.75 x 1.23
7	121748X	Washer 25/32 x 1-5/8 x 16 Ga.
8	12000029	Ring, Clip #T5304-75
9	184946X667	Cap, Spindle
13	121749X	Washer 25/32 x 1-1/4 x 16 Ga.
14	10040600	Washer Lock 3/8
15	73540600	Nut, Crown Lock 3/8-24 unf
16	587016002	Shaft Steering
19	194729	Plate Steering
21	586840201	Adapter, Wheel Steering Splnd Alum
22	585029901	Bearing Subasm Shaft Steer Low
26	414852X428	Insert, Wheel Steering
27	19211616	Washer 21/32 x 1 x 16 Ga.
28	17000612	Screw 3/8-16 x 3/4
35	440770	Gear, Sector Plate
45	587016401	Washer 3/8 ID 2-3/8OD 12 Ga. PLTD
50	73900600	Nut Lock Flg. 3/8-16 unc
53	188967	Washer Hardened .793 x 1.637 x .060
57	197246	Bracket Upstop
58	194747	Bolt Shoulder Sector Pivot CFM
59	194748	Washer Thrust Sector Steering
60	73971000	Nut Flange Lock 5/8-11
61	581926202	Draglink, LH
62	581926302	Draglink, RH
63	17000512	Screw 5/16-18 x 3/4
64	199849	Retainer Clip Spring Steering
66	71020748	Bolt Hex Fghd 7/16-14 x 3 Serr
67	194737	Bushing PM Front Axle
68	73900700	Nut Lock Flange 7/16-14 Gr. 5
69	199162	Washer 1.5 x .505 x .118
70	585338801	Bracket Deck Susp. Front
75	580683701	Pinion
76	580683601	Screw Head Sock
80	1370H	Washer
81	436887	Link Cross RH
82	442147	Pivot Bolt
85	441873	Pivot RH
86	441872	Pivot LH
122	444962	Cap Gear Sector

**NOTE:** All component dimensions given in U.S. inches  
 1 inch = 25.4 mm



**MOWER DECK** TRACTOR - - MODEL NUMBER 917.204081



mower\_deck 54-tex\_38\_r1

**MOWER DECK** TRACTOR - - MODEL NUMBER 917.204081

KEY PART NO.	NO.	DESCRIPTION
1	195632	Deck Weldment Mower
6	196066	Cover Mandrel LH
7	197181	Cover Mandrel RH
11	187256	Blade Bagging
--	187255	Blade Mulching
12	400337	Rod Anti Sway
13	587256401	Shaft Asm. w/Lower Bearing
14	187281	Housing, Mandrel
15	585323901	Bearing, Ball, Mandrel
16	19131312	Washer 13/32 x 13/16 x 12 Ga.
18	72140505	Bolt RdHd 5/16-18 unc x 5/8
19	194208	Pin Cotter 5/16 Bow Tie Lock
21	73680500	Nut, Crownlock 5/16-18 unc
24	105304X	Cap Sleeve
25	178102	Spring, Torsion
26	110452X	Nut, Push
27	187257X428	Deflector Shield
29	131491	Rod, Hinge
32	153535	Pulley, Mandrel
33	400234	Nut, Flg. Top Lock
34	73680600	Nut \
35	584309301	Screw Sems 7/16-20 x 1 Hex Head
39	197380	Pulley, Idler
41	584953901	Bolt Hex Wshr
43	196065	Arm, Idler
46	137729	Screw, Thdroll. 1/4-20 x 5/8
47	587686701	V-Belt, Mower
49	73900600	Nut, Lock Flg. 3/8-16 unc
50	72110616	Bolt, Carr. 3/8-16 x 2
52	197379	Pulley Idler
58	187342	Baffle Right
59	187344	Baffle Left
60	187607	Baffle Center
97	178515	Washer Hardened
98	196105	Spring Drive
113	72110508	Bolt Rdhd Sqnk 5/16-18 x 3/4
114	187556	Rod Tension Relief
116	193406	Bolt, Shoulder
117	174873	Gauge Wheel
120	19132012	Washer 13/32 x 1-1/4 x 12 Ga.
122	187557	Bushing Tension Relief
184	73900500	Nut Lock Flange 5/16-18
185	73900700	Nut Lock Flange 7/16-14 Gr. 5
187	195161	Stud Fastener w/"D" Anti-Rotation
189	195185	Arm Susp. Mower Rear
190	196539	Bolt Shoulder
192	198468	Keeper Belt Idler
194	74490736	Bolt Carr Sqnk 3/8-16 x 2-1/4
196	72140620	Bolt RdHd 3/8-16 unc x 2-1/2 Gr. 5
241	152927	Screw
242	415598	Washout Port
--	587125401	Mandrel Assembly (Includes housing (key #14), shaft assembly (key #13), bearing (key #15) and nut (key #33) only - pulley/washer and blade bolt/washers not included)
--	416405	Coupling Quick Connect
--	418076	Replacement Mower, Complete

**NOTE:** All component dimensions given in U.S. inches  
1 inch = 25.4 mm