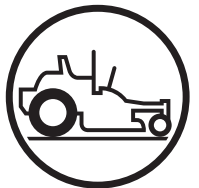




www.husqvarna.com

English



Operator / Parts Manual

DFS 11 Bushel / 967 322701-02

Please read the operator manual carefully
and make sure you understand the instructions
before using the machine.

2019-01-03

114 10 67-20



CONGRATULATIONS on the purchase of a new collection system. It has been designed, engineered and manufactured to give the best possible dependability and performance.


If you experience any problem you cannot easily remedy, contact your nearest authorized service center/ department. They have competent, well-trained technicians and the proper tools for service and repairs.

Please read and retain this manual. The instructions will enable you to assemble and maintain your collection system properly. Always observe the SAFETY RULES.


KNOW YOUR COLLECTION SYSTEM

READ THIS OPERATION MANUAL AND SAFETY RULES BEFORE ASSEMBLING OR OPERATING YOUR COLLECTION SYSTEM.


Compare the illustrations with the carton contents to familiarize yourself with the parts before starting the assembly. Study the operating instructions and safety precautions thoroughly to insure proper functioning of your Grass Catcher and to prevent injury to yourself and others. Save this manual for future reference.


 **CAUTION!** DO NOT operate mower with grass catcher partially installed.


- Disengage blades and stop engine before leaving mower seat to empty containers, unclogging chutes, etc.
- Close cover before starting.
- Disengage mower blades when crossing driveways or gravel surfaces and other areas where thrown objects could be a hazard.
- DO NOT attempt to vacuum cans or other potentially hazardous projectiles.

 **CAUTION!** Before assembling grass catcher to mower:

- Set parking brake.
- Place motion control levers in NEUTRAL position.
- Turn ignition key OFF and remove key.
- Make sure the blades and all moving parts have completely stopped.

 **CAUTION!** The operation of any mower can result in foreign objects thrown into the eyes, which can result in severe eye damage. ALWAYS wear safety glasses or eye shields before starting your mower and while mowing. Standard safety glasses are recommended or a wide vision safety mask for over spectacles.

 **CAUTION!** Do not leave grass in the bagger containers. Empty the containers after each use and before storing. Failure to do so may result in spontaneous combustion that could develop into a fire.

 **CAUTION!** Grass catcher components are subject to wear, damage and deterioration, which could expose moving parts or allow objects to be thrown. Frequently check components and replace with manufacturer's recommended parts, when necessary.

CONTENTS

SAFETY	4
ASSEMBLY	5
REPAIR PARTS	10
BLOWER	12
HOOD	14
HOPPER	16
HANDLE	18
WEIGHTS	20

Tips For Improved Bagging

- Follow the mower operation instructions in the Operator Manual.
- When using the grass catcher on a lawn where grass and leaf bagging equipment has not been used previously, thatch and debris that has accumulated for long periods of time is picked up. The amount collected and the total time of operation may be greater than will be experienced with regular use of the grass catcher.
- Always run throttle at full speed when bagging.
- Select a ground speed low enough to give good mower cutting performance, good quality cut and good bagging performance.
NOTE: It may be necessary to overlap width of cut to suit your conditions.
- If grass is extremely tall, it should be mowed twice. The first cut should be at one of the highest settings, the second time to desired height.
- Use the left hand side of mower for trimming.
- Avoid cutting wet grass or in the morning while the dew is still heavy. Grass clippings collected under these conditions tend to be sticky and adhere to the walls of the flow path causing clogging.
- If the grass catcher fails to pick up cut grass or leaves, it is an indication that clogging has occurred in the system or that the grass catcher containers are full.

Tools Required

- Wrench 5/16" (2) Wrench 9/16" (2)
- Wrench 3/4" Wrench 1-1/4"
- Wrench 1/2" Wrench 7/16"
- Wrench 15/16" Screwdriver, standard (1)
- Torque wrench Drill with 7/16" bit
- Socket 1/2"
- Ratchet with 3/8" drive, 6" extension

NOTE: When right hand (RH) and left hand (LH) are mentioned in this manual, it means when you are seated on the mower in the operator's position.

General Recommendations

Always observe safety rules when performing any maintenance.

- Before each use check for loose fasteners.
- Clean unit thoroughly after each use.

Blade Care

- For best results mower blades must be kept sharp. Replace bent or damaged blades.
- See instructions in the mower operator manual.

Storage

When grass catcher is to be stored for a period of time, clean it thoroughly, remove all dirt, grass, leaves, etc. Store in a clean, dry place

SAFETY

General Operation

- **DO NOT** operate mower with grass catcher, unless the front weights are installed.
- Read, understand and follow all instructions in the manual and on the machine before starting.
- Keep the machine free of debris buildup that can touch hot exhaust/engine parts and burn. Do not allow the mower deck to plow leaves or other debris that can cause a buildup.
- The operation of any mower can result in foreign objects thrown into the eyes, which can result in severe damage. Always wear safety glasses or eye shields while operating the mower or performing adjustments or repairs. A wide vision safety mask over spectacles or standard safety glasses are recommended.
- Stop engine before removing grass catcher or unclogging chute.
- Do not operate the mower without either the entire grass catcher or the guard in place. Be aware of the mower discharge direction and do not direct it towards anyone.
- Clear the area of objects such as rocks, stones, toys, wire etc., which could be picked up and thrown by the blades.
- Watch for holes, ruts, or bumps. Uneven terrain could overturn the machine. Tall grass can hide obstacles.

Service

- Grass catcher components are subject to wear, damage, and deterioration, which could expose moving parts or allow objects to be thrown. Frequently check components and replace with manufacturer's recommended parts, when necessary.
- Keep nuts and bolts, especially blade attachment bolts, tight and keep equipment in good condition.
- Never tamper with safety devices. Check regularly for proper operation.
- Keep machine free of grass, leaves, or other debris buildup. Clean oil or fuel spills.
- Allow machine to cool before storing.
- Stop and inspect the equipment if you strike an object. Repair, if necessary, before restarting.
- Never make adjustments or repairs with the engine running.

⚠ CAUTION! DO NOT operate mower with grass catcher, unless the front weights are installed. Use extra care with grass catchers or other attachments. These can change the stability of the machine.

Hose Care

- Inspect hoses before each use. If hoses have excessive wear, tears or punctures, replace immediately.
- To prolong the life of the hose, periodically rotate hose and turn hose end to end. Refer to Preventative Maintenance Schedule in this manual.
- To decrease wear, avoid twists and sharp turns in the hoses.
- Avoid dragging the lower hose along the sides of buildings or other hard surfaces.

Cleaning

Regular cleaning, washing, and lubricating will prolong the service of the machine.

NOTE: Use care with power washers to avoid damage to decals. DO NOT EXCEED 1000 PSI WATER PRESSURE FOR CLEANING

For best results, clean polymesh regularly. The poly mesh on the collection system is located inside the hopper hood.

1. Shut off engine.
2. Release the two rubber latches under the rear of the hood. Open hood and brush debris off of both sides.
3. Close hood and relatch.

DO NOT USE THE COLLECTION SYSTEM WITHOUT POLY MESH SECURELY IN PLACE.

Storage

When grass catcher is to be stored for a period of time, clean it thoroughly, remove all dirt, grass, leaves, etc. Cover all scratches with touch-up paint.

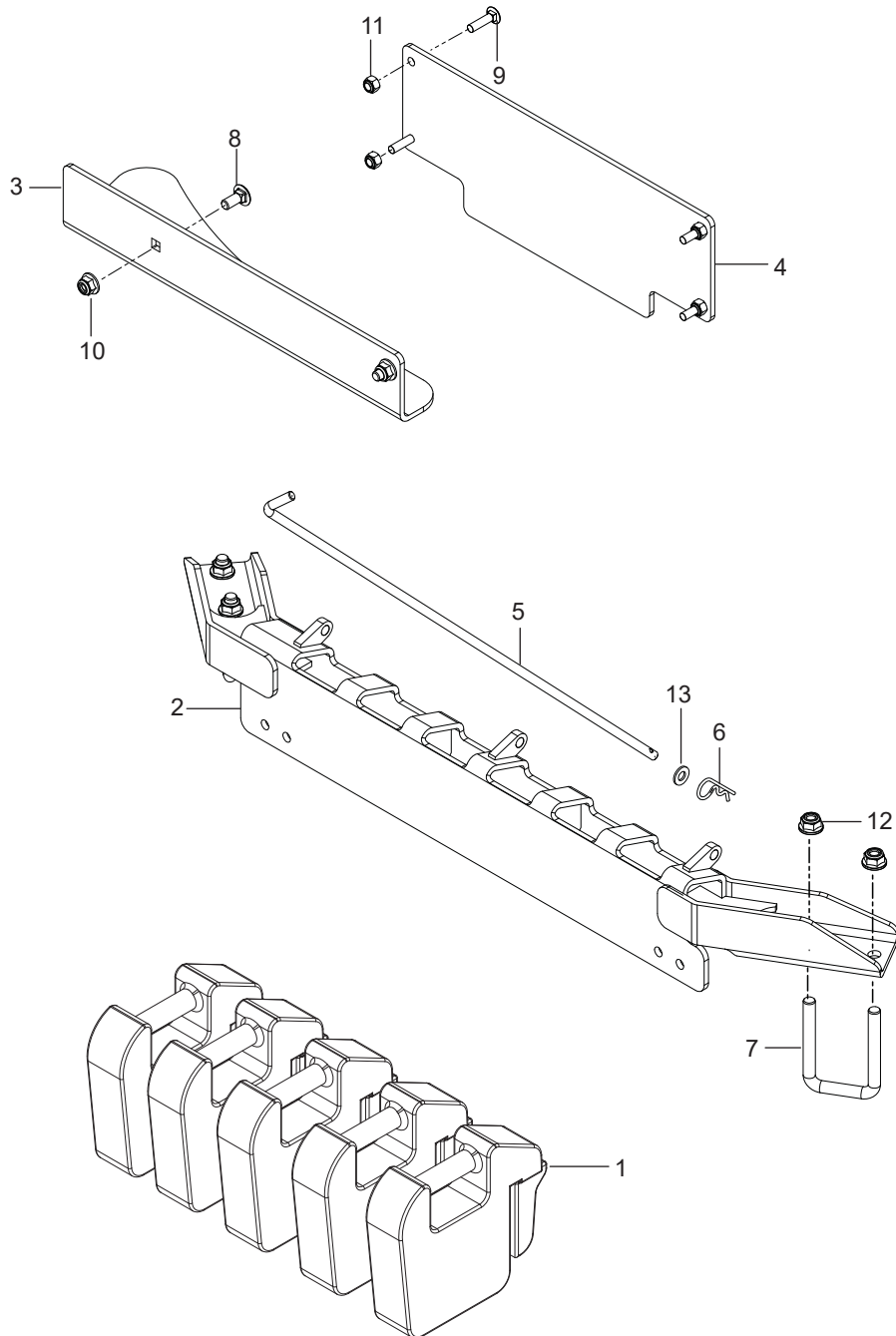
Store in a clean, dry place. Covered or indoor storage is recommended.

REPAIR PARTS

Ref.	Part No.	Qty	Description
1	539 09 25-31	5	Counter Weight
2	579 25 65-02	1	Bracket, Counter Weight
3	575 59 41-02	1	Baffle, Right
4	575 59 36-02	1	Baffle, Left
5	579 25 73-02	1	Rod, Latch
6	539 97 69-89	1	Retainer
7	579 09 10-02	2	U-Bolt
8	539 99 03-16	2	Bolt 5/16-18 x 3/4 Round Head Square Neck
9	539 10 98-00	4	Bolt 1/4-20 x 1 Round Head Square Neck
10	539 11 28-99	2	Nut 5/16-18 Hex Flange Nyloc
11	539 97 69-78	4	Nut 1/4-20 Hex Nyloc
12	521 99 11-01	4	Nut 1/2-13 Hex Flange Nyloc
13	539 99 01-22	1	Washer 3/8 SAE Flat

REPAIR PARTS

WEIGHTS

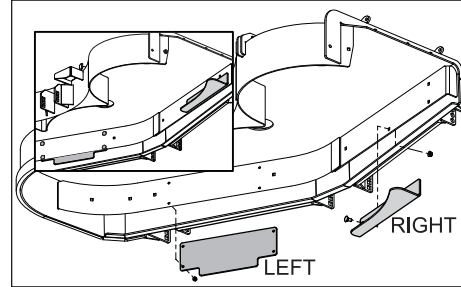


ASSEMBLY

Blow Out Baffles

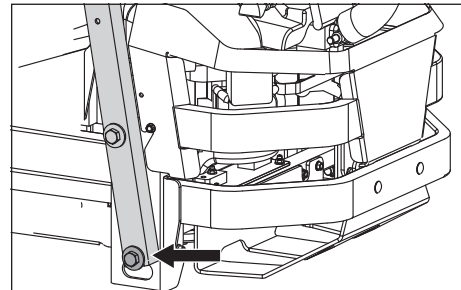
NOTE: The collection system includes optional deck baffling designed to help prevent blow out when collecting in extremely dry cutting conditions. If cutting conditions are not extremely dry, baffling may not be required.

1. Remove the hardware from the deck's center baffle.
2. Place the left hand baffle from the kit between the deck skirt and the front edge of deck.
3. Secure the left hand baffle and the center baffle to the deck skirt with four 1" (2.54 cm) carriage bolts and nuts supplied with the kit, using a 7/16" wrench.
4. With a 1/2" wrench, install the right hand baffle on the blade side of the deck skirt and secure with two 1/2" (1.27 cm) carriage bolts and nuts from the kit.

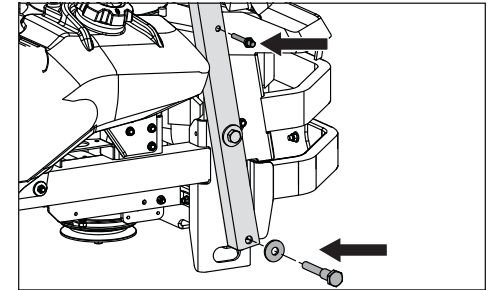


Collector

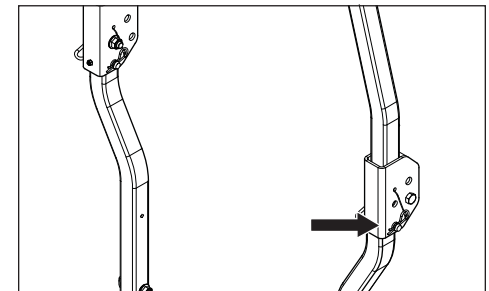
1. Using two 15/16" wrenches, remove the lower ROPS bolts on each side, retaining washer and nut for next step.



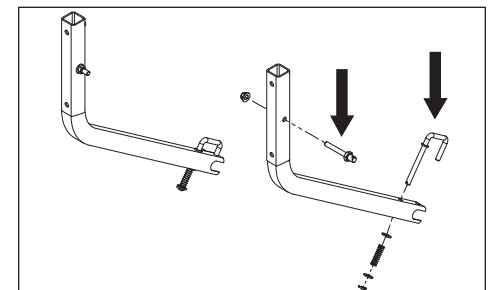
2. Install a hitch pin, washer and nut on each side where the ROPS bolt was removed. Tighten the hitch pins and nuts with 15/16" and 1-1/4" wrenches.



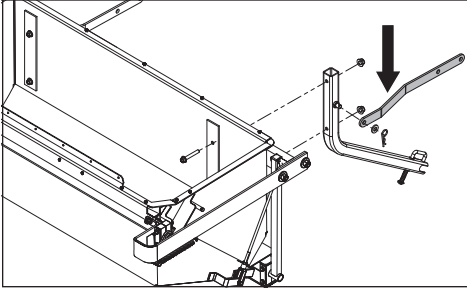
3. Install the mount pins through the ROPS tube in the predrilled holes approximately 18" (45.72 cm) up from bottom of the ROPS tube. The pin will pass from the outside in, so the threads are on the inside of the tube. Secure each side with nuts and tighten using 3/4" and 9/16" wrenches.
4. Remove the left hand ROPS latch pin and reinstall it on the handle on the opposite side of the hinge.



5. On each hitch tube, install the retention pin assembly on the lower end.
6. Attach the mount pins on the upper ends of the hitch tubes, making sure that the bolt head sits on the outside of the tube.

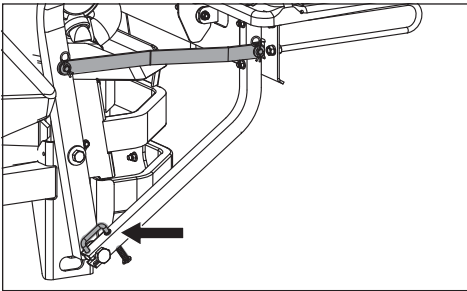


7. Attach the straps to the hitch tube mount pins, add washers and secure with retainers. Fasten the hitch tubes to the rear of the hopper with two bolts and nuts per side.



8. Secure the hopper door closed with a rope, ties or clamps for the next steps.
NOTE: It is recommended that two people lift the hopper assembly onto the mower.

9. Pull the spring loaded retention pins up and rotate them outwards. With the hopper positioned close to the rear of the mower, lift the hopper up and onto the hitch pins installed on the ROPS.

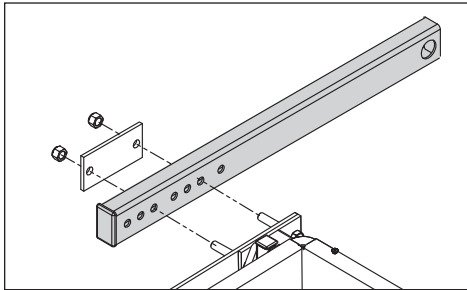


10. Attach the straps to the upper mount pins on the ROPS, add washers and secure with retainers. Rotate the retention pins inwards and set the ends through the holes in the hitch tubes to lock the hitch tubes onto the hitch pins.

Handle

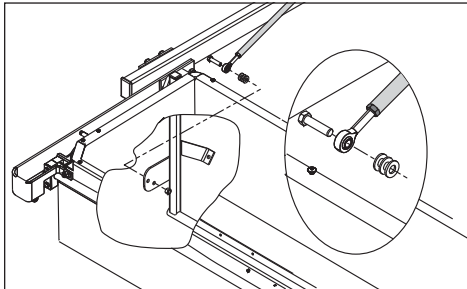
1. Locate the small backing plate that has been secured to the left hand side of the hopper frame for shipment.

2. Remove the plate and discard the original bolts. Install the handle support tube to the side of the hopper and secure it with the backing plate and two 3" (7.62 cm) bolts from the kit and the original hopper bolts. See the illustration for correct positioning of the handle support tube.



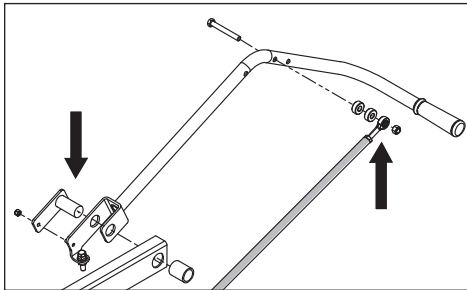
3. On each end of the threaded rod, use the adjustment nuts to have 1/2" (1.27 cm) of thread show past the nut.

4. Attach the threaded rod to the door linkage.



5. Align the mounting holes of the handle support tube and the handle. Connect the handle to the tube support with the pivot pin.

6. Attach the threaded rod to the upper handle, using the illustration for correct positioning.

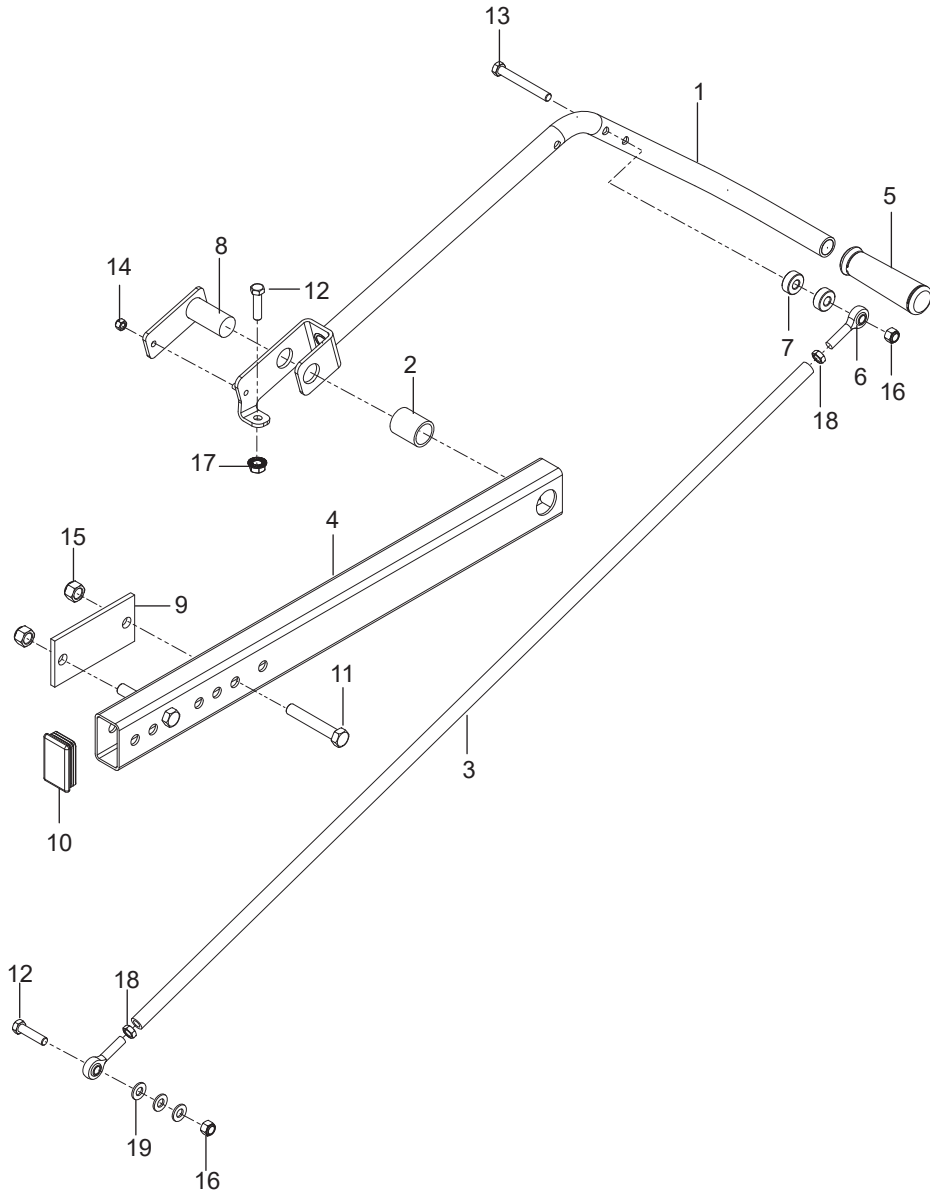


REPAIR PARTS

Ref.	Part No.	Qty	Description
1	578 89 87-02	1	Handle Blk
2	539 11 37-31	1	Bushing
3	539 11 37-53	1	Tube, Threaded
4	578 89 86-02	1	Tube Support Blk
5	532 00 00-33	1	Grip, Handle Blk
6	539 11 37-39	2	Rod End 3/8 Right Hand
7	539 10 26-56	2	Spacer
8	539 11 37-49	1	Pin, Pivot
9	539 11 37-55	1	Plate, Backing
10	539 11 37-57	1	Plug, Tube
11	539 10 15-72	2	Bolt 1/2-13 x 3 Hex Head
12	539 99 06-55	2	Bolt 3/8-16 x 1-1/2 Hex Head
13	539 10 13-41	1	Bolt 3/8-16 x 3 Hex Head
14	539 97 69-78	1	Nut 1/4-20 Hex Nyloc
15	539 10 13-31	2	Nut 1/2 Hex Nyloc
16	539 97 69-79	2	Nut 3/8-16 Hex Nyloc
17	539 99 06-13	2	Nut 3/8-16 Hex Whiz Lock
18	539 10 87-32	2	Nut 3/8-24 Hex Jam
19	539 99 01-22	3	Washer 3/8 SAE Flat

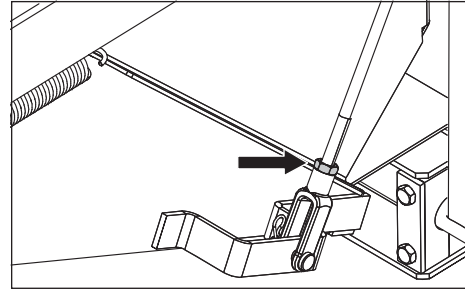
REPAIR PARTS

HANDLE



ASSEMBLY

7. One each side, detach the door rod from the hopper by removing the yoke retainer pin. Use the adjustment nuts to have 1/4" (6.35 mm) of thread show past the nut. Reconnect the door rods to the hopper.

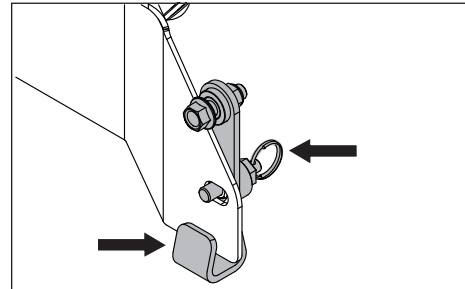


8. Adjust the handle stop bolt on the handle hinge so the handle sits approximately 2" (5.08 cm) above the fuel tank.

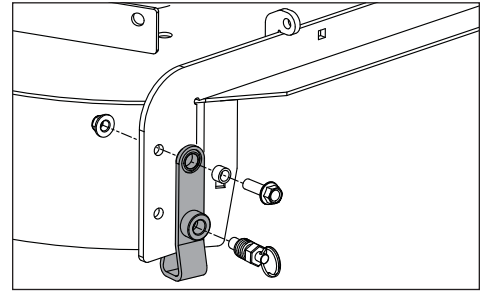
9. Remove the rope or clamp holding the hopper door closed. Adjust nuts on the threaded rod and door rods to set the door closure and set the threaded rod to pass overcenter of the handle. The overcenter provides a locking feature for the hopper door.

Blower Assembly

1. Locate the lower rear latch assembly attached to the mounting bracket of the blower assembly. Pull the spring pin to release the assembly from the blower.

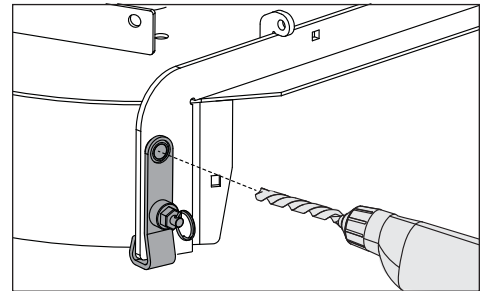


2. The lower rear latch assembly will be reattached to the deck discharge chute flange at the rear of the deck. Attach the latch to the outside of the deck flange using the top hole. Secure the spring pin in the bottom hole.

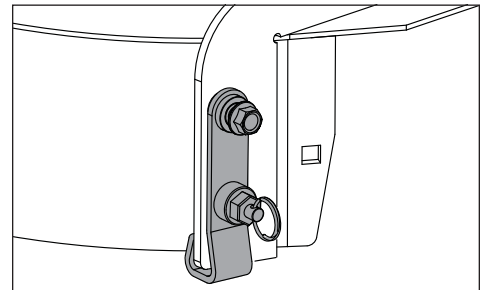


NOTE: Older model decks may need to have the top hole drilled into the deck.

3. Secure the latch to the deck with the spring pin and adjust latch vertically on the flange. Mark the location of the second hole and rotate the bracket out of the way. Drill a 7/16" hole at the mark.

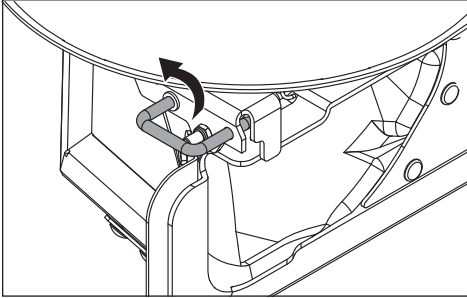


4. Move the latch assembly into place and attach the latch at the top hole with the bolt, spacer and nut.

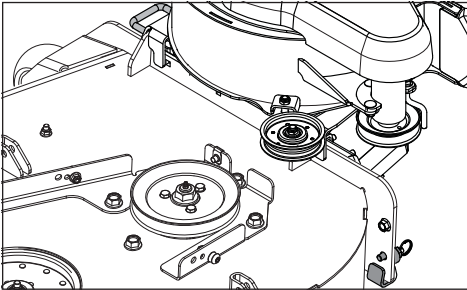


NOTE: The latch assembly can remain on the deck when the blower collection system is not used.

- Slide the latch pins out and rotate up toward the upper housing.



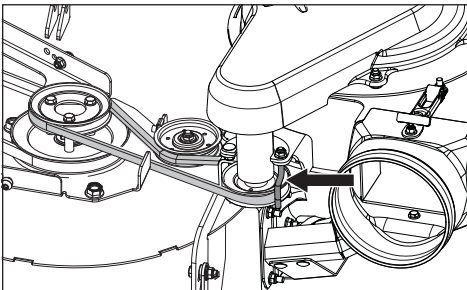
- Set the blower on the deck with the mount slots over the discharge chute mounting tabs.
- Rotate the latch pin back down, assuring it passes through the deck's front discharge chute mounting tab.
- Pull the spring pin and rotate the lower rear latch until the pin fits through the blower mounting bracket and deck flange.



NOTE: The Drive Kit is not included with the collection system. Install the drive kit before continuing.

Drive Belt

- Install drive belt around pulley on blower.
- Rotate the belt keeper within 1/8" (3.175 mm) of the blower pulley and tighten with 1/2" wrench.

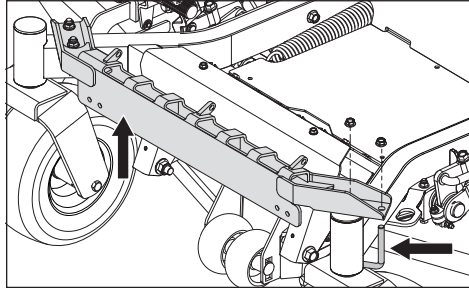


- Rotate the blower idler towards the front of blower and place the belt over the deck pulley. See the illustration for correct belt routing.

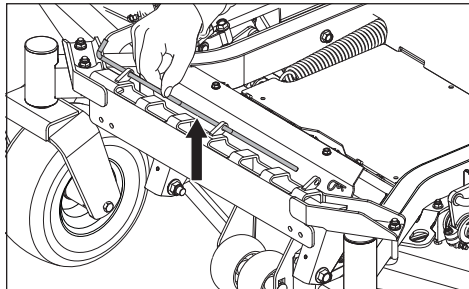
NOTE: It may be necessary to disengage the latch pins and pivot the blower to aid in installing the drive belt. Reinstall the latch pins after the belt installation.

Counter Weights

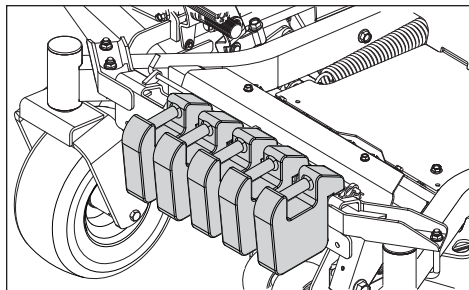
- Install the counterweight mounting bracket assembly onto the front frame between the casters. Secure the U-bolts under the frame and up through the bracket ends. Fasten the U-bolts with supplied nuts.



- Remove the retainer from the assembly latch rod and slide the rod out of the bracket.

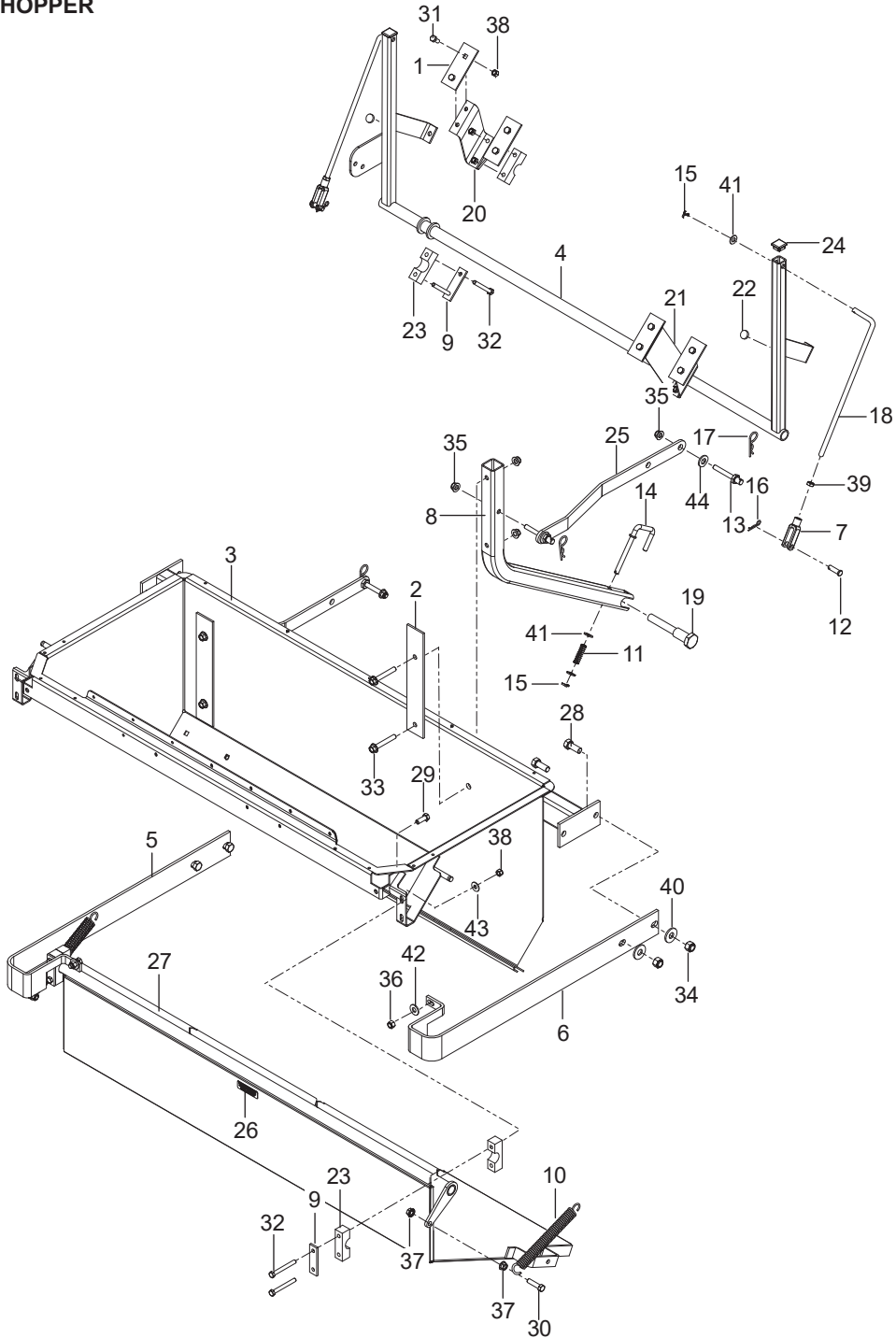


- Set the five counterweights into the mounting bracket, leaving the right hand side slot open.
- Reinstall the latch rod and secure it with the retainer.



Ref.	Part No.	Qty	Description
1	578 34 90-02	4	Plate, Blk
2	578 34 86-02	2	Plate, Mounting Blk
3	578 90 25-02	1	Hopper, Blk
4	578 91 62-02	1	Bell Crank, Blk
5	539 11 37-50	1	Guard, Left
6	539 11 37-51	1	Guard, Right
7	539 97 74-65	2	Yoke
8	578 34 85-02	2	Tube, Hitch Blk
9	539 10 48-07	4	Bar, Reinforcement
10	539 10 73-15	2	Spring, Bagger
11	525 81 60-01	2	Spring, Compression
12	539 10 92-32	2	Pin Clevis 3/8 x 1-1/4
13	525 44 50-01	4	Pin, Mount
14	525 81 59-01	2	Pin, Retention
15	876 02 04-12	4	Pin, Cotter 1/8 x 3/4
16	539 97 69-88	2	Pin, Cotter
17	539 97 69-89	4	Pin #4
18	539 11 37-22	2	Rod, Door
19	525 44 53-01	2	Pivot Bolt
20	578 34 91-02	1	Bracket, Support Left Blk
21	578 34 87-02	1	Bracket, Support Right Blk
22	539 10 25-87	2	Grommet, Bumper
23	539 10 48-08	8	Pillow Block
24	539 11 37-58	2	Plug, Tube
25	578 34 84-02	2	Strap, Blk
26	539 11 12-60	1	Decal, Ventilation
27	539 11 37-47	1	Door
28	539 10 83-69	2	Bolt 1/2-13 x 1-1/4 Hex Head
29	539 99 05-63	2	Bolt 3/8-16 x 1 Hex Head
30	539 99 06-55	2	Bolt 3/8-16 x 1-1/2 Hex Head
31	539 99 02-06	8	Bolt 5/16-18 x 1 Hex Head
32	539 10 17-21	8	Bolt 5/16-18 x 2-3/4 Hex Head
33	539 13 30-06	4	Bolt 3/8-16 x 2-1/2 Hex Flange Head
34	539 10 13-31	2	Nut 1/2 Hex Nyloc
35	521 99 65-01	8	Nut 3/8-16 Hex Flange Nylocf
36	539 97 69-79	2	Nut 3/8-16 Hex Nyloc
37	539 99 06-13	4	Nut 3/8-16 Hex Whizlk
38	873 80 05-00	16	Nut 5/16-18 Hex Nyloc
39	539 10 87-32	2	Nut 3/8-24 Hex Jam
40	539 10 95-54	2	Washer 1/2 Flat
41	539 99 01-22	6	Washer 3/8 SAE Flat
42	539 99 05-17	2	Washer 3/8 Std Flat
43	539 99 06-92	4	Washer 5/16 Std Flat
44	819 17 17-13	4	Washer SAE

HOPPER

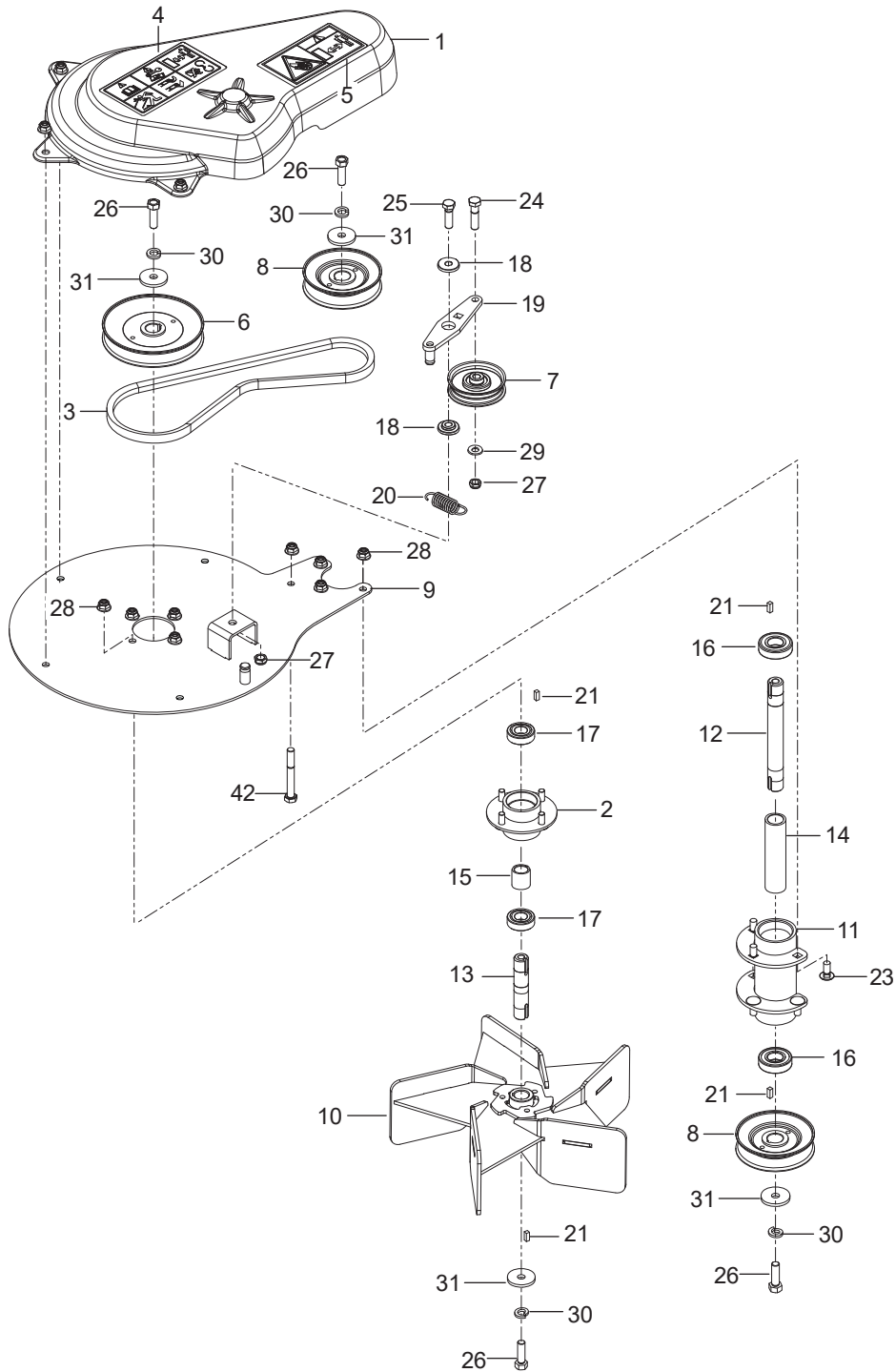


Maintenance Schedule

ITEM	BEFORE EACH USE	EVERY 25 HOURS	EVERY 50 HOURS
Check/tighten nuts and bolts	X		
Check/tighten hoses	X		
Turn hose end to end		X	
Rotate hose			X
Clean machine			X

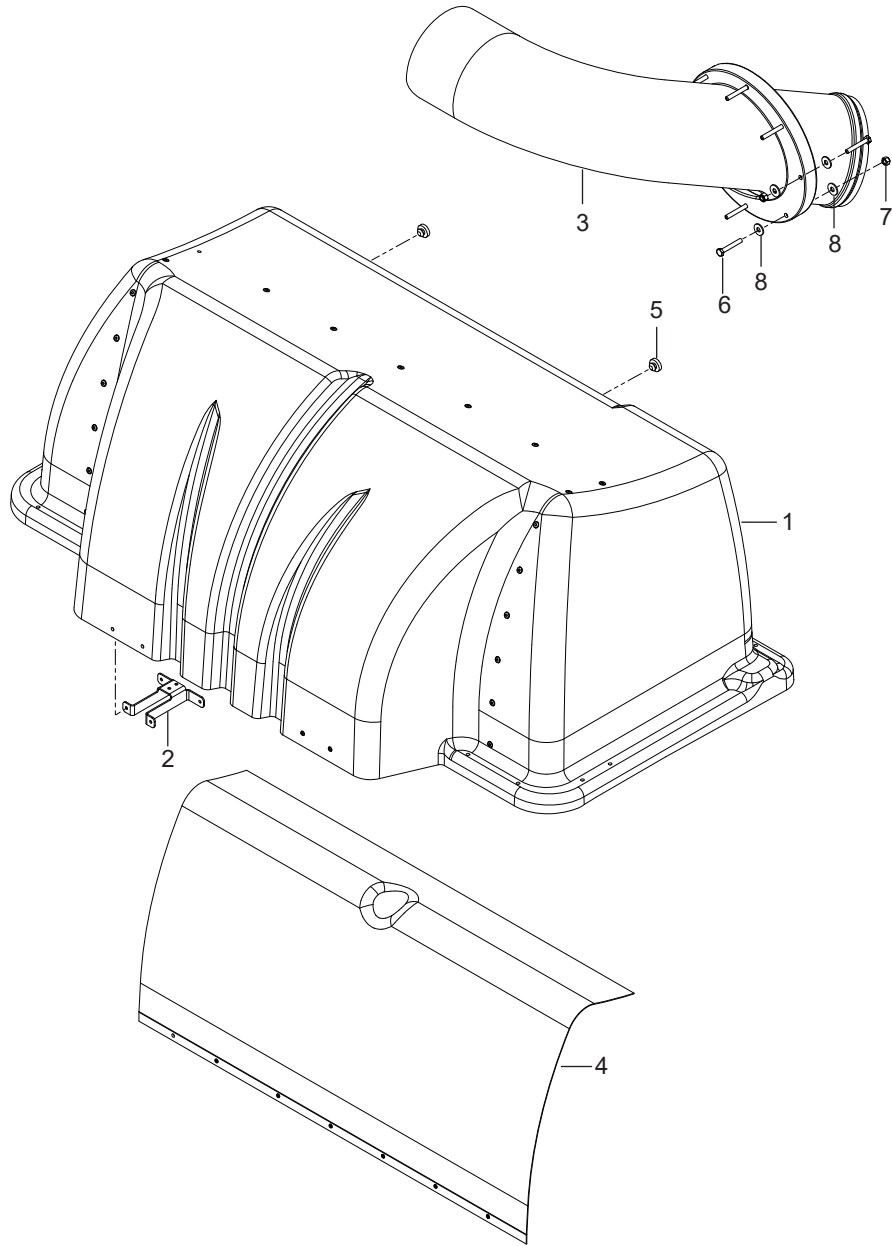
Troubleshooting

Problem	Possible Cause
Loss of Vacuum	Hose or hood inlet clogged
	Container full
Unusual vibration or noise	Solid object jammed in unit
	Loose or missing bolts
Unit difficult to close	Obstructions keeping door from closing completely
	Hood hinge bolts are too tight



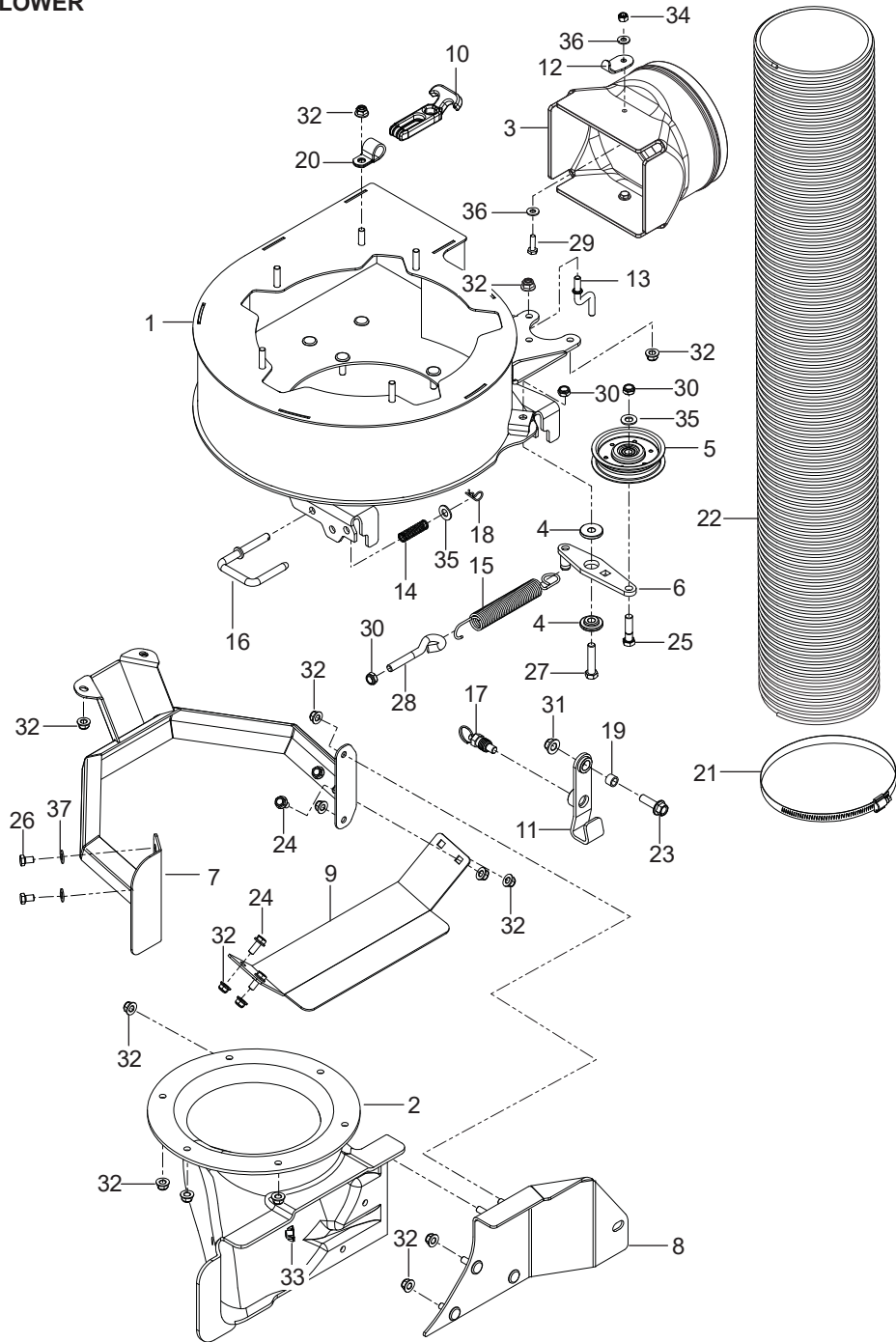
Ref.	Part No.	Qty	Description
1	539 11 11-72	1	Hood
2	539 11 11-75	2	Support, Draw Latch
3	539 11 11-82	1	Inlet Tube
4	539 11 11-83	1	Mesh, Poly Diamond
5	539 10 25-87	6	Grommet, Bumper
6	539 99 10-03	8	Bolt 1/4-20 x 1-3/4 Hex Head
7	539 97 69-78	8	Nut 1/4-20 Nyloc
8	539 99 05-98	16	Washer 1/4

HOOD



Ref.	Part No.	Qty	Description	Kit / Assy Includes
1	585 37 38-01	1	Shield, Top Belt	
2	585 37 49-01	1	Housing, Hub	
3	539 10 13-86	1	Belt	
4	539 10 57-85	1	Decal, Warning	
5	539 10 67-41	1	Decal, Impeller	
6	539 13 03-24	1	Pulley	
7	539 10 67-21	1	Pulley, Idler	
8	522 59 46-01	2	Pulley, Drive	
9	585 37 46-02	1	Plate, Top Blk	
10	585 58 78-01	1	Impeller	
11	522 59 50-01	1	Tube, Spindle	
12	585 37 54-01	1	Shaft, Spindle	
13	585 37 56-01	1	Shaft, Impeller	
14	585 37 55-01	1	Spacer	
15	585 37 53-01	1	Spacer	
16	539 13 02-96	2	Bearing	
17	585 37 52-01	2	Bearing	
18	539 13 21-61	2	Bushing, Brake	
19	522 59 48-02	1	Idler, Blk	
20	522 59 51-01	1	Spring, Idler	
21	539 11 56-67	4	Key 3/16 x 1/2 Hex Head	
22	874 78 05-40	1	Bolt 5/16-18 x 2-1/2 Hex Head	
23	539 99 03-16	5	Bolt 5/16-18 x 3/4 Round Head Square Neck	
24	874 78 06-24	1	Bolt 3/8-16 x 1-1/2 Hex Head	
25	874 78 06-20	1	Bolt 3/8-16 x 1-1/4 Hex Head	
26	532 85 08-57	4	Bolt 3/8-24 x 1-1/4 Hex Head	
27	539 20 02-82	2	Nut 3/8-16 Hex Nylon Thin	
28	539 11 28-99	12	Nut 5/16-18 Hex Flange Nyloc	
29	819 13 13-16	1	Washer Flat	
30	810 03 06-00	4	Washer 3/8 Lock Hvy	
31	532 14 02-96	4	Washer, Blade	

BLOWER



Ref.	Part No.	Qty	Description
1	585 85 60-02	1	Housing, Blower Upper
2	522 59 33-01	1	Housing, Blower Lower
3	585 23 68-02	1	Connector, Hose
4	539 13 21-61	2	Bushing, Brake
5	579 60 46-01	1	Pulley, Idler
6	522 59 48-02	2	Idler, Blk
7	585 37 57-02	1	Guard, Blk
8	585 37 62-02	1	Bracket, Blower Rear Blk
9	585 37 64-02	1	Skid Plate, Blk
10	586 18 47-01	2	Latch, Draw T-Handle
11	585 37 65-01	1	Latch, Rear Lower
12	586 08 23-01	2	Keeper, Latch
13	522 59 52-01	1	Keeper, Belt
14	525 81 60-01	1	Spring, Compression
15	532 19 61-05	1	Spring, Deck Drive
16	586 08 22-01	2	Pin, Latch
17	585 37 68-01	1	Pin, Spring
18	539 97 69-88	1	Pin
19	579 61 33-01	1	Spacer
20	539 10 26-85	2	Clamp, Tube
21	574 38 66-01	1	Clamp, Hose
22	578 25 79-01	1	Hose
23	525 83 42-01	1	Bolt 3/8-16 x 1-1/4 Hex Flange Head
24	874 49 05-12	4	Bolt 5/16-18 x 3/4 Hex Flange Head
25	874 78 06-24	1	Bolt 3/8-16 x 1-1/2 Hex Head
26	874 78 05-08	2	Bolt 5/16-18 x 1/2 Hex Head
27	539 97 69-49	1	Bolt 3/8-16 x 1-3/4 Hex Head
28	539 10 74-84	1	Eyebolt 3/8-16 x 2-1/4
29	539 99 06-43	2	Screw 1/4-20 x 7/8 Hex Cap
30	539 20 02-82	3	Nut 3/8-16 Hex Nylon Thin
31	521 99 65-01	1	Nut 3/8-16 Hex Flange Nyloc
32	539 11 28-99	26	Nut 5/16-18 Hex Flange Nyloc
33	539 13 03-13	2	Nut 5/16-18 Tee
34	539 97 69-78	2	Nut 1/4-20 Hex Nyloc
35	819 13 13-16	2	Washer Flat
36	819 09 10-16	4	Washer
37	819 11 11-16	2	Washer 16 Gauge