

Repair Parts Manual

TS 242D / 96041044200



English

114 18 03-26



Please read the operator's manual carefully and make sure you understand the instructions before using the machine.

HOW TO USE THIS MANUAL

This manual is designed to provide the customer with a means to identify the parts on his/her tractor when ordering repair parts. The illustrations may or may not represent the actual assemblies; therefore, it is not recommended to use this manual as a guide to assemble or disassemble the tractor. Some hardware and parts are drawn larger in order to more readily identify them.

Each tractor has its own model number. The model number for your tractor can be found on the fender under the seat.

Support / Help

If you require assistance or have questions concerning the application, operation, maintenance or parts for your product:

- Visit our website: www.husqvarna.com
- Call Us Toll Free: 1-800-487-5951

When ordering parts, always give the following information:

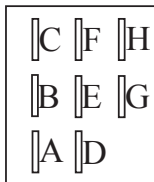
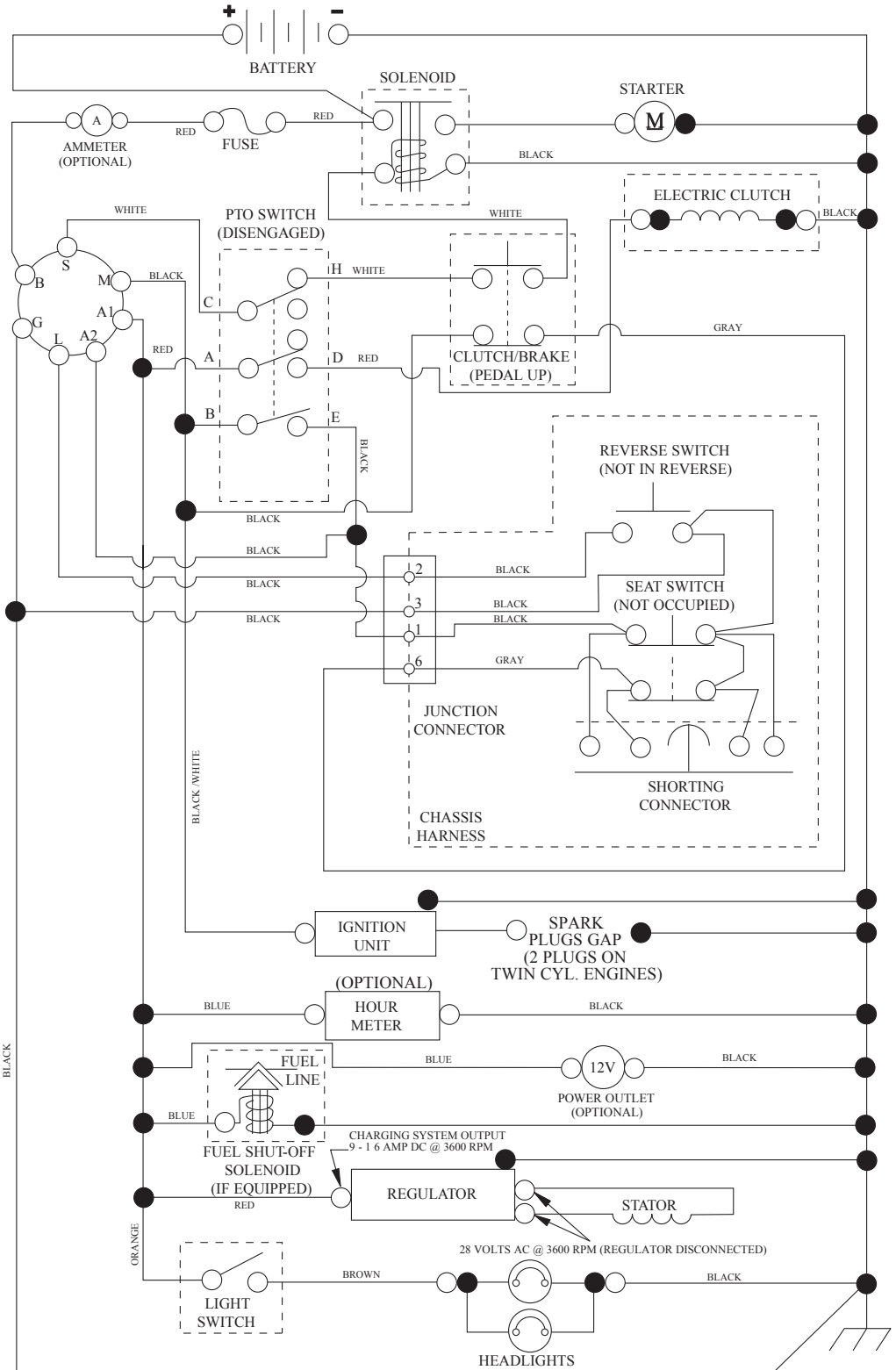
- Product - "TRACTOR"
- MODEL NUMBER - "TS 242D" (96041044200)"
- Part Number
- Part Description

TABLE OF CONTENTS

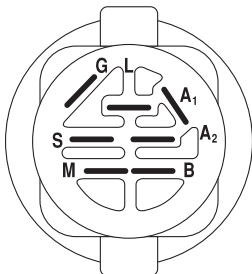
SCHEMATIC	3
ELECTRICAL	4-5
CHASSIS	6-7
DRIVE	8-9
ENGINE	10-11
STEERING	12-13
MOWER DECK	14-15
MOWER LIFT	16
SEAT	17
DECALS	18

TRACTOR - MODEL NO. TS 242D (96041044200), PROD. NO. 960 41 04-42 SCHEMATIC

SCH12

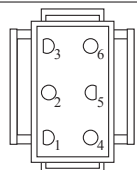


PTO SWITCH
(MATING SIDE)

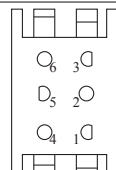


IGNITION SWITCH

POSITION	CIRCUIT	"MAKE"
OFF	M+G+A1	
RUN/OVERRIDE	B+A1	
RUN	B+A1	L+A2
START	B+S+A1	

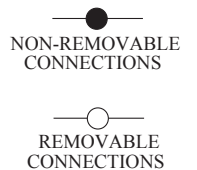


CHASSIS HARNESS
CONNECTOR
(MATING SIDE)

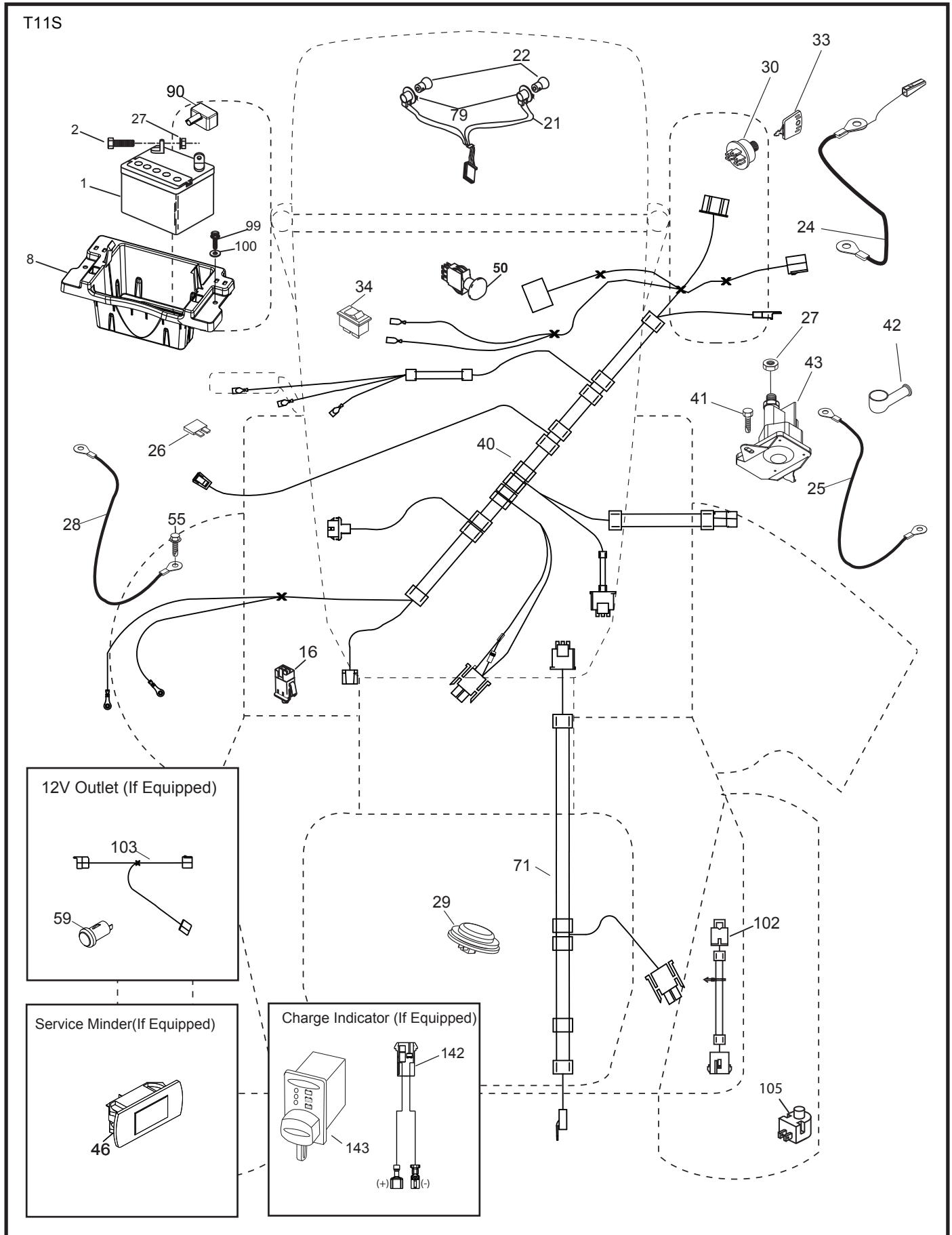


DASH HARNESS
CONNECTOR

WIRING INSULATED CLIPS
NOTE: IF WIRING INSULATED
CLIPS WERE REMOVED FOR
SERVICING OF UNIT, THEY
SHOULD BE RE-INSTALLED TO
PROPERLY SECURE YOUR
WIRING.



**TRACTOR - MODEL NO. TS 242D (96041044200), PROD. NO. 960 41 04-42
ELECTRICAL**



**TRACTOR - MODEL NO. TS 242D (96041044200), PROD. NO. 960 41 04-42
ELECTRICAL**

KEY NO.	PART NO.	DESCRIPTION
1	532 16 34-65	Battery
2	874 76 04-12	Bolt Hex Head 1/4-20 x 3/4
8	587 20 51-01	Box Battery
16	532 17 61-38	Switch Interlock Push-In
21	532 40 02-52	Harness Light
22	532 00 41-52	Bulb Light #1156
24	585 55 56-01	Cable Battery
25	585 55 55-01	Cable Starter
26	532 17 51-58	Fuse
27	596 13 36-01	Locknut 1/4-20
28	532 41 65-88	Cable, Ground
29	532 40 15-45	Switch, Seat
30	532 19 33-50	Switch, Ign
33	532 41 19-35	Key\Chain
34	532 11 07-12	Switch Light / Reset
40	501 13 29-01	Harness Ign. Dash
41	817 72 04-08	Screw Thd Cut 1/4-20 x 1/2
42	532 13 15-63	Cover, Terminal
43	582 04 28-02	Solenoid
46	594 91 91-01	Serviceminder Hourmeter
50	582 10 76-01	Switch PTO
55	817 06 05-12	Screw Thdrol 5/16-18 x 3/4 TYTT
71	532 19 42-76	Harness Ign. Chassis
79	532 17 52-42	Socket Asm. Bulb
90	532 43 53-95	Cover Terminal
99	817 67 04-12	Screw Hexwsh Thdrol 1/4-20 x 3/4
100	596 13 53-01	Washer 9/32 x 7/8
102	532 40 44-54	Harness Pigtail
105	532 40 75-68	Switch Reverse TT Pedal Control

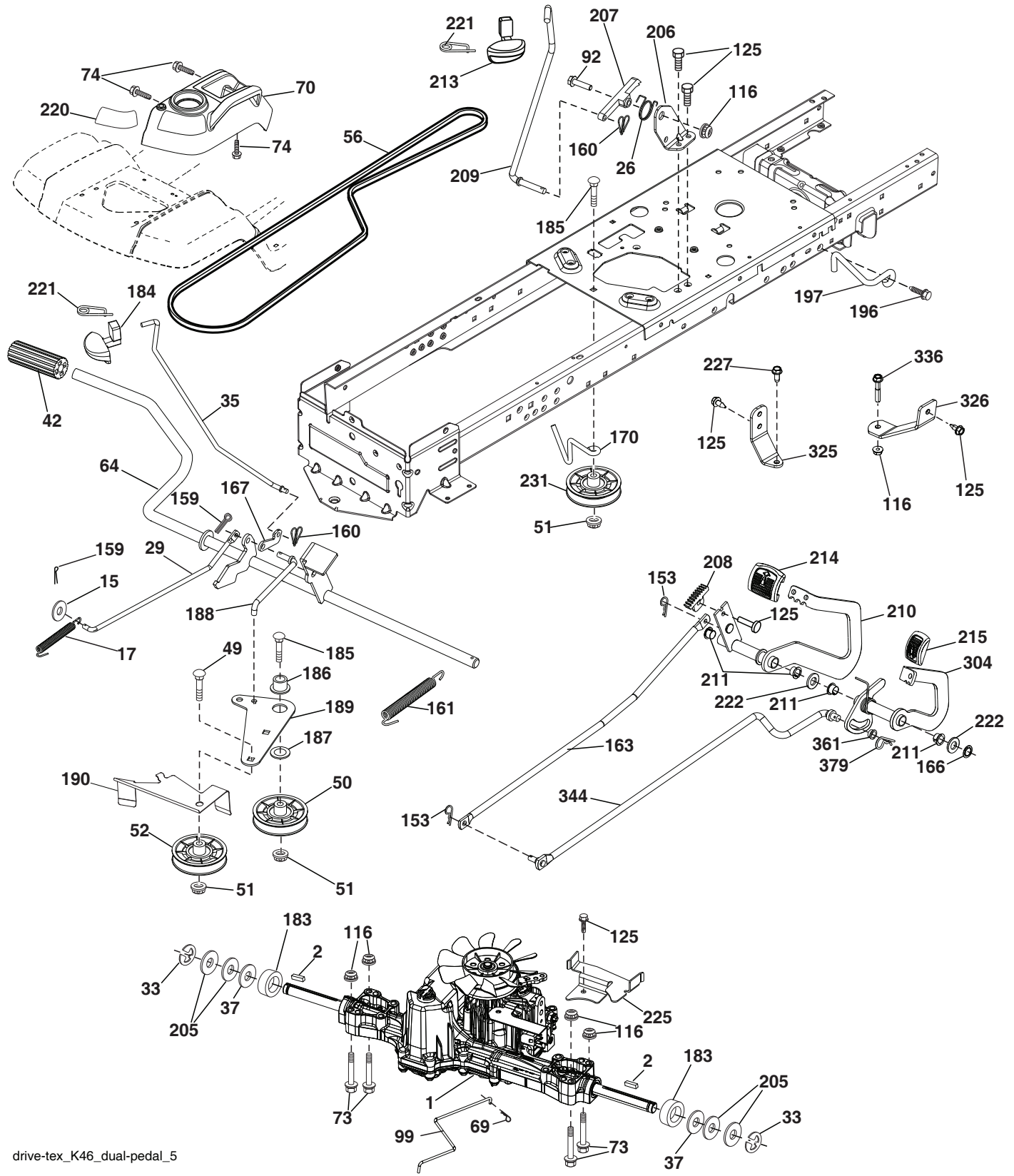
NOTE: All component dimensions given in U.S. inches
1 inch = 25.4 mm

**TRACTOR - MODEL NO. TS 242D (96041044200), PROD. NO. 960 41 04-42
CHASSIS**

KEY NO.	PART NO.	DESCRIPTION	KEY NO.	PART NO.	DESCRIPTION
2	532 41 22-82	Drawbar	183	595 30 57-01	Bolt 5/16-18 x 1-1/4
3	597 68 82-01	Kit, Grille Applique, (includes applique cover and emblem badge)	189	817 00 05-12	Screw 5/16-18 x 3/4
5	590 74 88-29	Dash, Asm	194	596 13 57-01	Nut Lock Hex Flange 5/16-18 x .68
14	532 44 11-77	Hood	195	532 40 41-37	Plug, Hole, Dash, Lower
15	597 86 78-01	Incandescent headlight kit (includes LH/RH lens and LH/RH housing)	196	532 43 97-16	Console Decklift
18	597 40 71-01	Grille Asm.	199	532 19 82-59	Plate Deck Lift
36	817 06 05-12	Screw 5/16-18 x 3/4	202	597 86 77-01	Kit, Side Vents, LH/RH (includes LH/RH side vents)
37	532 44 12-08	Fender	204	597 40 80-01	Kit, Top Vent (includes top vent and clip retainers)
58	532 41 22-81	Drawbar Upper	205	532 43 97-30	Side Trim RH
68	596 03 07-01	Screw Hexagon, 5/16-18 x 1/2	206	532 43 97-29	Side Trim LH
125	581 68 48-01	Clip Fuel Line	214	532 19 91-45	Clip Retainer Tinner
130	596 32 17-01	Screw 10 x 0.750 BOS Thread	217	532 40 91-67	Rod Pivot
137	532 40 75-90	Bumper Dash	221	532 19 89-09	Reflector LH
146	581 85 79-01	Bolt	228	593 82 40-01	Stud Fastener
150	532 43 97-74	Air Duct	235	596 56 42-01	Spacer Fender
151	532 43 66-70	Bracket Pivot Hood	236	873 93 05-00	Nut Lock 5/16-18 unc
152	532 43 98-70	Shield Browning	281	817 00 06-16	Screw 3/8-16 x 1 Smgml, Tap
159	817 00 06-12	Screw 3/8-16 x 3/4	306	873 90 06-00	Nut Lock
161	532 43 99-29	Window Fuel	335	532 44 82-04	Cover-RH Lower
162	596 13 41-01	Screw, Hex, 1/4-15 x 1/2	336	532 44 53-09	Cover-LH Lower
165	532 19 43-30	Support Tank Rear	350	532 44 51-43	Clip X-mas Tree
175	590 60 77-02	Crossmember	375	586 90 82-01	Dash Clip-On Bumper
176	532 40 07-76	Screw 10-24 x 5/8	378	590 84 98-01	Bushing Flange
177	532 19 52-28	Bushing Steering	- -	597 33 48-01	Kit Guard Brush
180	593 34 63-01	Chassis			
182	532 40 68-59	Dash Lower			

NOTE: All component dimensions given in U.S. inches
1 inch = 25.4 mm

**TRACTOR - MODEL NO. TS 242D (96041044200), PROD. NO. 960 41 04-42
DRIVE**



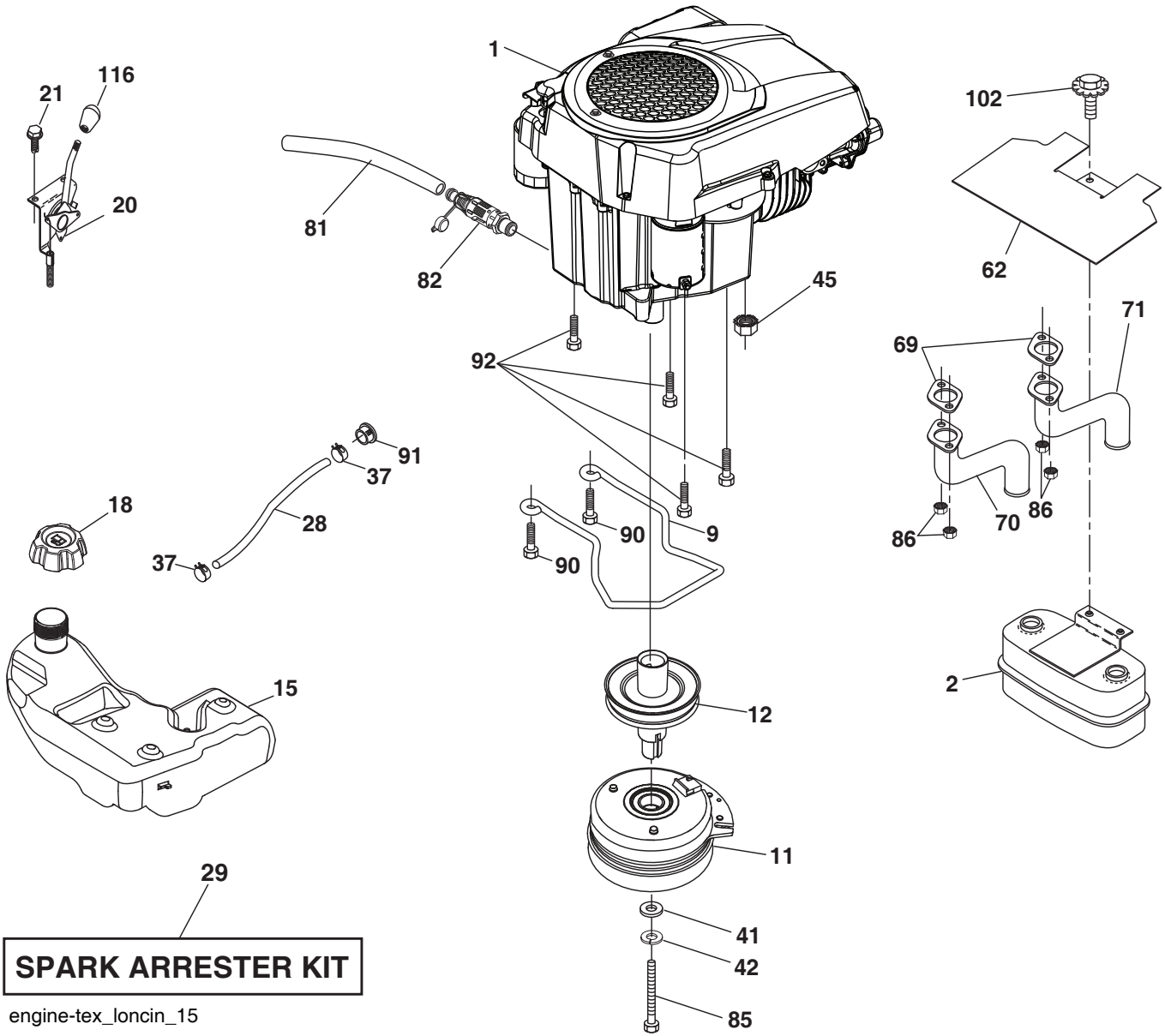
drive-tex_K46_dual-pedal_5

TRACTOR - MODEL NO. TS 242D (96041044200), PROD. NO. 960 41 04-42 DRIVE

KEY NO.	PART NO.	DESCRIPTION	KEY NO.	PART NO.	DESCRIPTION
1	---	Transaxle, TUFFTORQ K46CR (501051401) (Order parts from transaxle manufacturer)	184	587 65 37-01	Handle Parking Brake
2	532 12 35-83	Key	185	872 11 06-22	Bolt Rdhd Sqnk 3/8-16 x 2-1/2
15	596 56 53-01	Washer, 3/8 x 0.08 in., St. Clr. Zinc	186	532 19 43-21	Spacer Retainer
17	532 41 36-78	Spring, Brake	187	596 13 55-01	Washer, 13/32 x 2, Clr, Zn
26	532 19 96-79	Spring Return Cruise	188	582 21 70-01	Link Clutch Ground Drive, Long
29	532 40 38-06	Rod, Brake	189	532 19 43-17	Bellcrank Ground Drive
33	812 00 00-01	Ring E	190	532 19 43-18	Keeper Bellcrank Ground Drive
35	583 86 45-02	Rod, Brake, Park	196	817 00 06-16	Screw 3/8-16 x 1
37	532 18 89-67	Washer Hardened	197	587 40 20-01	Bracket Clutch Anti-Rotation
42	532 00 88-83	Cover, Foot Pedal	205	532 12 17-48	Washer
49	596 13 62-01	Bolt, Cup Head, 3/8-16 x 3/4	206	532 44 85-96	Bracket Mount Latch Cruise
50	532 19 43-27	Pulley Idler Flat	207	587 03 14-02	Link Control Cruise
51	873 90 06-00	Lock Nut 3/8-16	208	596 56 41-01	Gear
52	532 19 43-26	Idler V-Groove	209	596 86 98-01	Rod Control Cruise
56	592 85 52-01	V-Belt, Drive	210	588 98 72-02	Dual Pedal Asm, Forward
64	532 19 78-65	Shaft Asm. Pedal Brake Control	211	532 12 01-83	Bearing Nylon
69	532 42 33-03	Hairpin Soft Zink .059 x 1.125	213	532 40 31-19	Knob Control Cruise
70	532 43 96-61	Console Asm RH	214	532 42 12-63	Pedal Forward
73	596 13 65-01	Bolt 5/16-18 x 1/2	215	596 90 83-01	Pedal Reverse
74	596 13 41-01	Screw Hex 1/4 x 15 x 1/2	220	532 19 89-08	Reflector RH
92	595 30 57-01	Screw, Hexagon, 5/16-18 x 1-1/4	221	532 40 31-87	Retainer Spring Clip Handle
99	582 40 45-01	Rod Spring Bypass	222	879 21 20-10	Washer 21/32 x 1-1/4 x 10 Ga.
116	596 13 57-01	Nut Lock 5/16-18 x .68	225	532 40 33-19	Keeper Belt Trans.
125	817 00 05-12	Screw 5/16-18 x 3/4	227	596 13 59-01	Screw 5/16-18 x 3/4
153	532 00 44-97	Retainer Spring	231	532 40 72-87	Idler Groove
159	596 02 95-01	Pin Cotter 1/8 x 3/4	304	588 98 73-02	Dual Pedal Asm, Reverse
160	596 02 94-01	Retainer Clip	325	586 43 12-02	Bracket, Trqstp, LH
161	532 10 57-09	Spring, Return, Clutch	326	586 00 11-02	Bracket, Trqstp, LH
163	588 56 63-01	Rod, Dual Ped, Reverse, Slide	336	587 25 96-02	Bolt 5/16-18 x 1-3/4 Flanged
166	532 42 91-64	Nut Push	344	597 64 73-01	Rod, Dualed Ped, Rvs
167	532 40 52-57	Latch Brake Parking	361	597 13 67-01	Bushing, Dual Ped, Rvs, Slide
170	532 41 34-30	Keeper Belt Centerspan	379	596 58 06-01	Pin, Retaining 1-7/16 x 0.073
183	532 13 70-57	Spacer Split			

NOTE: All component dimensions given in U.S. inches
1 inch = 25.4 mm

**TRACTOR - MODEL NO. TS 242D (96041044200), PROD. NO. 960 41 04-42
ENGINE**

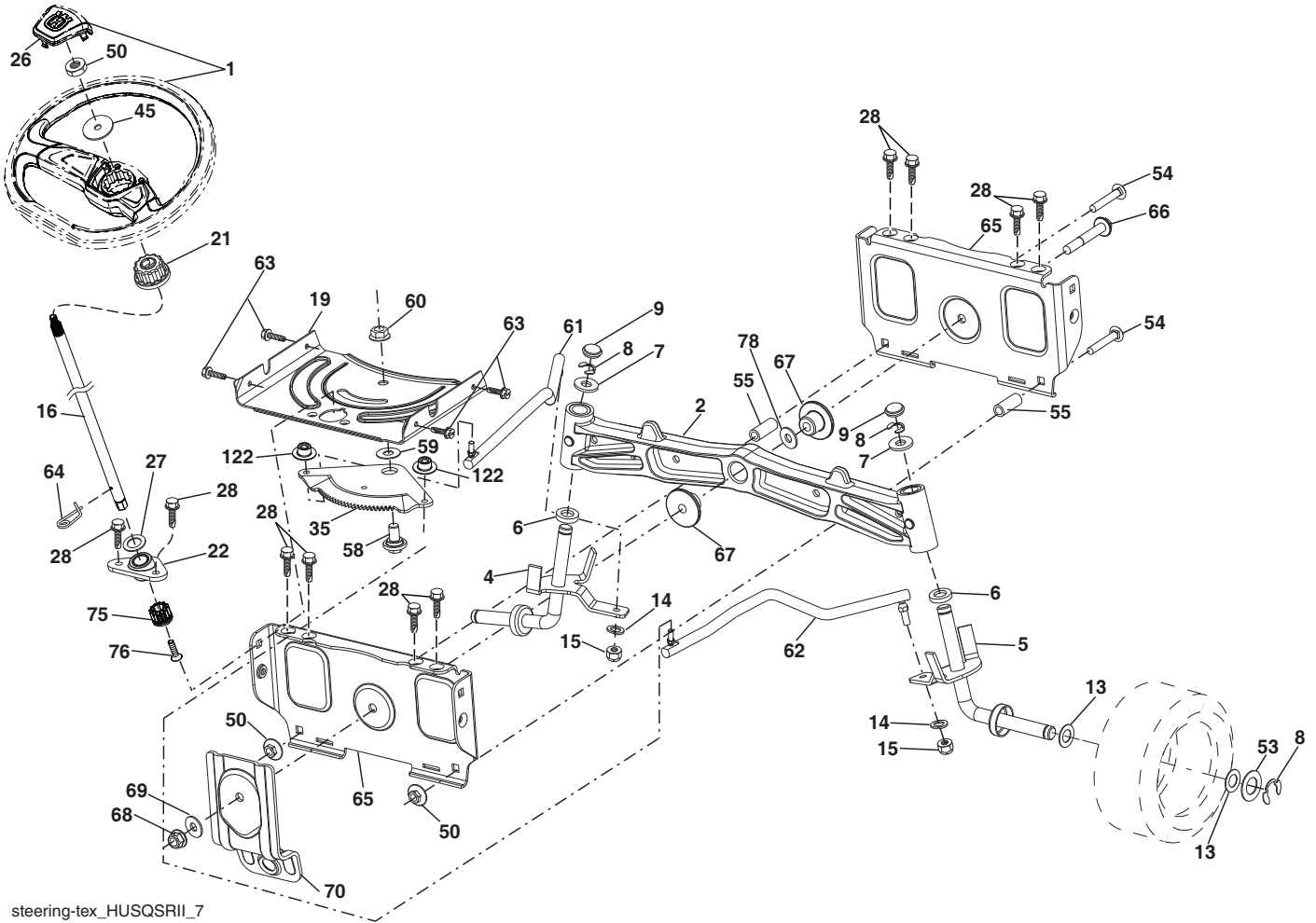


**TRACTOR - MODEL NO. TS 242D (96041044200), PROD. NO. 960 41 04-42
ENGINE**

KEY NO.	PART NO.	DESCRIPTION
1	-----	Engine Husqvarna Model No. LC2P80 (598632101) (Order parts from engine manufacturer.)
2	589 81 87-01	Muffler
9	501 83 26-02	Keeper Belt Engine
11	587 25 50-01	Clutch Electric
12	586 89 96-01	Pulley Engine
15	532 19 34-99	Tank Fuel
18	584 24 87-02	Cap Fuel
20	586 21 96-01	Control Throttle
21	596 32 17-01	Screw #10 x 0.750 BOS Thread
28	532 40 11-35	Fuel Line
29	532 13 71-80	Spark Arrester Kit
37	532 12 34-87	Clamp Hose
41	532 12 61-97	Washer 1-1/2 x 15/32 x .250
42	596 23 89-01	Washer 7/16
45	593 35 64-01	Nut, Hexagon, Flange
62	532 43 40-17	Shield Heat Muffler
69	597 90 51-01	Gasket
70	597 88 89-01	Tube Exhaust LH
71	597 88 90-01	Tube Exhaust RH
81	532 14 84-56	Tube Drain Oil
82	532 42 82-87	Vavle Drain oil
85	501 60 67-01	Bolt 7/16-20 x 5 Gr. 5
86	532 18 43-62	Nut, Hex, Flange
90	817 00 06-16	Screw 3/8-16 x 1
91	532 18 74-95	Bushing 1.375 OD
92	817 12 06-16	Screw 3/8-16 x 1
102	817 00 05-12	Screw 5/16-18 x 3/4
116	539 13 26-24	Knob

NOTE: All component dimensions given in U.S. inches
1 inch = 25.4 mm

TRACTOR - MODEL NO. TS 242D (96041044200), PROD. NO. 960 41 04-42
STEERING ASSEMBLY



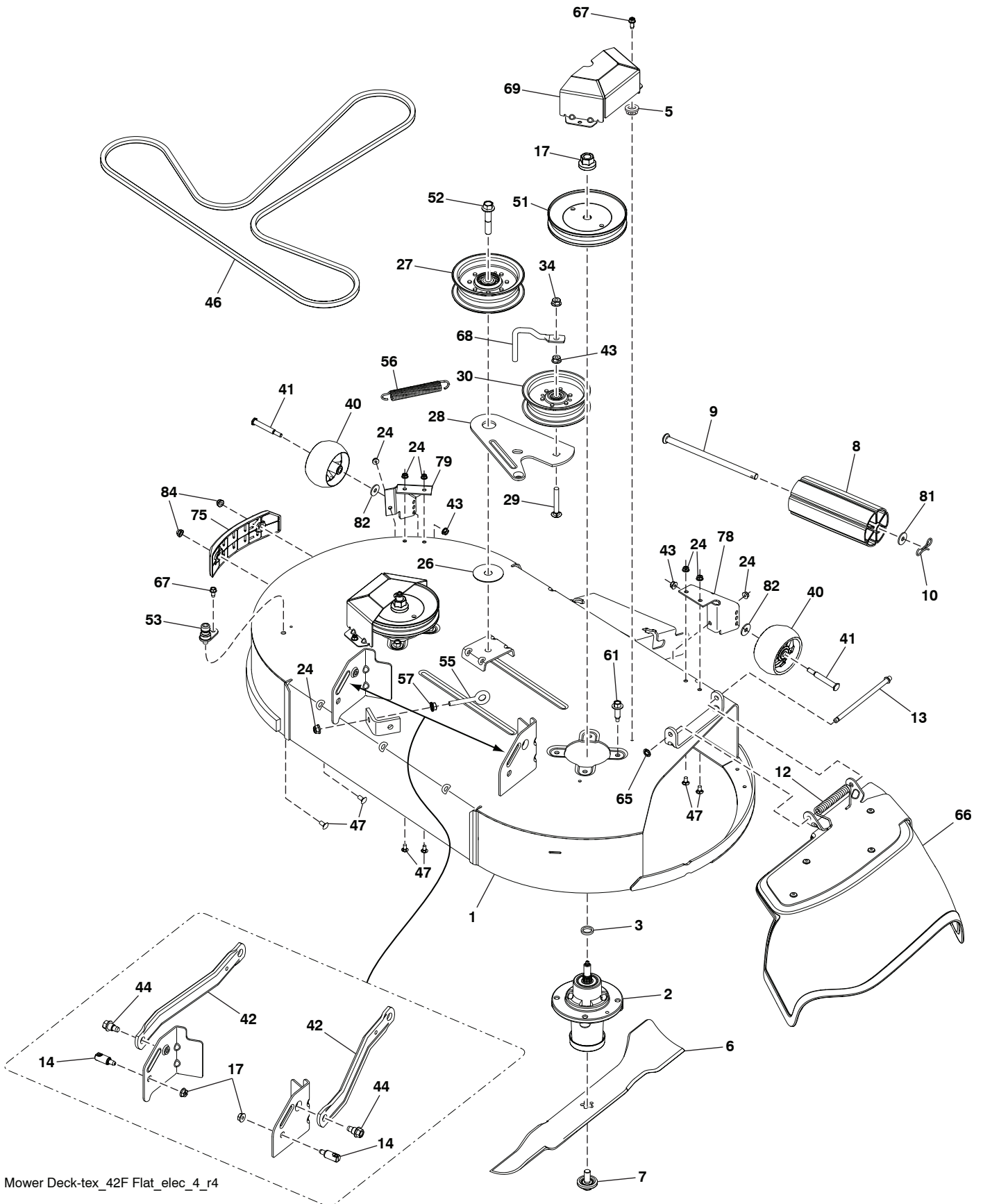
steering-tex_HUSQSRII_7

**TRACTOR - MODEL NO. TS 242D (96041044200), PROD. NO. 960 41 04-42
STEERING ASSEMBLY**

KEY NO.	PART NO.	DESCRIPTION
1	597 86 61-01	Wheel, Steering, Kit (includes steering wheel and cap)
2	532 19 59-68	Axle Asm., Front
4	586 72 40-01	Spindle Asm., LH
5	586 72 41-01	Spindle Asm., RH
6	532 00 62-66	Washer, Thrust, .75 x 1.230
7	532 12 17-48	Washer 25/32 x 1-5/8 x 16 Ga.
8	812 00 00-29	Ring, Clip #T5304-75
9	532 12 12-32	Cap, Spindle
13	532 12 17-49	Washer 25/32 x 1-1/4 x 16 Ga.
14	596 23 87-01	Washer, Spring, Lock
15	873 54 06-00	Nut, Crown Lock 3/8-24 unf
16	587 01 60-02	Steering Shaft
19	532 19 47-29	Plate Steering
21	586 84 02-01	Adapter Wheel Steering
22	585 02 98-02	Bearing
26	594 94 91-01	Cap, Wheel, Steering
27	596 93 34-01	Washer, Plain
28	817 00 06-12	Screw 3/8-16 x 3/4
35	532 19 47-32	Gear, Sector Plate
45	587 01 64-01	Washer 3/8 ID 2-3/8 OD 12 Ga. PLTD
50	873 90 06-00	Nut Lock Flg 3/8-16 unc
53	532 18 89-67	Washer Hardened .793 x 1.637 x .060
54	874 76 06-36	Bolt Hex 3/8-16 unc x 2-1/4
55	532 41 47-36	Spacer Brace Axle
58	532 19 47-47	Bolt Shoulder Sector Pivot CFM
59	532 19 47-48	Washer Thrust Sector Steering
60	873 97 10-00	Nut Flange Lock 5/8-11
61	597 07 02-02	Draglink, LH
62	597 07 03-02	Draglink, RH
63	817 00 05-12	Screw 5/16-18 x 3/4
64	532 19 98-49	Retainer Clip Spring Steering
65	532 19 47-34	Brace Axle Front
66	871 02 07-48	Bolt Hex Fghd 7/16-14 x 3 Serr
67	532 19 47-37	Bushing PM Front Axle
68	873 90 07-00	Nut Lock Flange 7/16-14 Gr. 5
69	532 19 91-62	Washer 1.5 x .505 x .118
70	585 33 88-01	Bracket Deck Susp. Front
75	580 68 37-01	Pinion
76	580 68 36-01	Screw Head Sock
78	532 05 70-79	Washer Thrust
122	532 44 49-62	Cap Gear

NOTE: All component dimensions given in U.S. inches
1 inch = 25.4 mm

TRACTOR - MODEL NO. TS 242D (96041044200), PROD. NO. 960 41 04-42
MOWER DECK



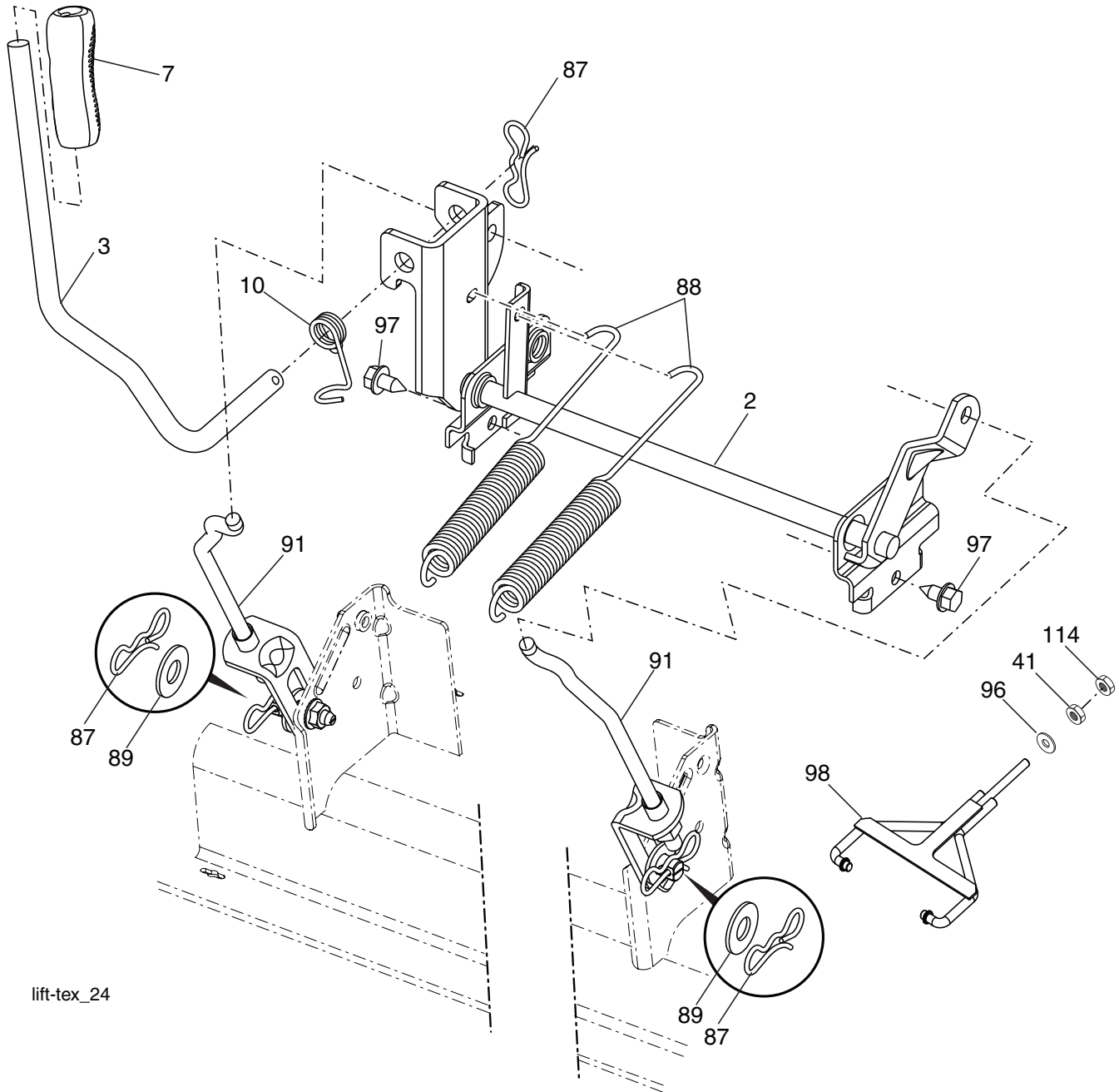
Mower Deck-tex_42F Flat_elec_4_r4

**TRACTOR - MODEL NO. TS 242D (96041044200), PROD. NO. 960 41 04-42
MOWER DECK**

KEY NO.	PART NO.	DESCRIPTION
1	587 93 90-01	Kit, SVC, Weldment
2	539 13 18-98	Housing Assembly
3	539 18 76-90	Washer-Spacer
5	596 13 48-01	Nut 9/16-18 x 1.010
6	586 91 81-01	Blade
7	532 19 30-03	Bolt, 7/16, Assy Blade
8	532 17 60-66	Roller, Nose
9	594 09 25-01	Rod, Roller, Nose
10	532 19 42-08	Clip Retainer
12	587 35 47-01	Spring
13	595 29 70-01	Rod Hinge
14	593 82 40-01	Stud, Fasten w/ Anti-Rotate
17	596 13 57-01	Nut Lock 5/16-18 x .68
24	594 94 44-01	Nut 5/16-18 Hex
26	532 17 85-15	Washer, Flat Hardened
27	532 19 61-04	Pulley, Idler Spec. Hub
28	586 87 40-02	Arm 42FCS Clutching
29	596 33 78-01	Bolt, Carr, 3/8-16 x 2-1/2
30	532 19 61-06	Pulley, Idler
34	596 32 26-01	Nut, Crownlock, 3/8-16 unc
40	589 52 73-01	Gauge Wheel
41	596 43 44-04	Bolt Shoulder 3/8-16 x 3-5/8
42	587 14 05-02	Arm, Susp., Rear
43	873 90 06-00	Nut Lock Flg 3/8-15 unc
44	532 19 65-39	Bolt Shoulder
46	587 27 01-01	Belt 42 FCS
47	595 90 16-01	Bolt, Cap, 5/16-18 x 3/4
51	532 19 97-91	Pulley, Mandrel
52	588 43 83-01	Screw 7/16-14 x 2.125 Hex Wsh Hd.
53	532 41 55-98	Washout Port
55	596 24 08-01	Eyebolt 5/16 x 3-1/2
56	587 35 84-01	Spring
57	596 03 92-01	Nut 5/16-18 Hex
61	584 95 39-01	Bolt Hx
65	532 11 04-52	Nut Push
66	587 30 57-01	Deflector Assy 42 FCS
67	532 13 77-29	Screw
68	532 19 84-68	Keeper Belt Idler
69	586 93 68-05	Cover 42" Mandrel
75	582 68 32-03	Bumper
78	501 80 83-02	Gauge Wheel Breacket RH
79	590 43 90-02	Gauge Wheel Breacket LH
81	582 36 05-01	Bushing Nose Roller
82	596 13 49-01	Washer, Plain, 3/8 x 7/8
84	532 17 01-65	Bolt Shoulder 5/16-18
--	598 51 03-01	Mower Deck Complete

NOTE: All component dimensions given in U.S. inches
1 inch = 25.4 mm

**TRACTOR - MODEL NO. TS 242D (96041044200), PROD. NO. 960 41 04-42
MOWER LIFT**



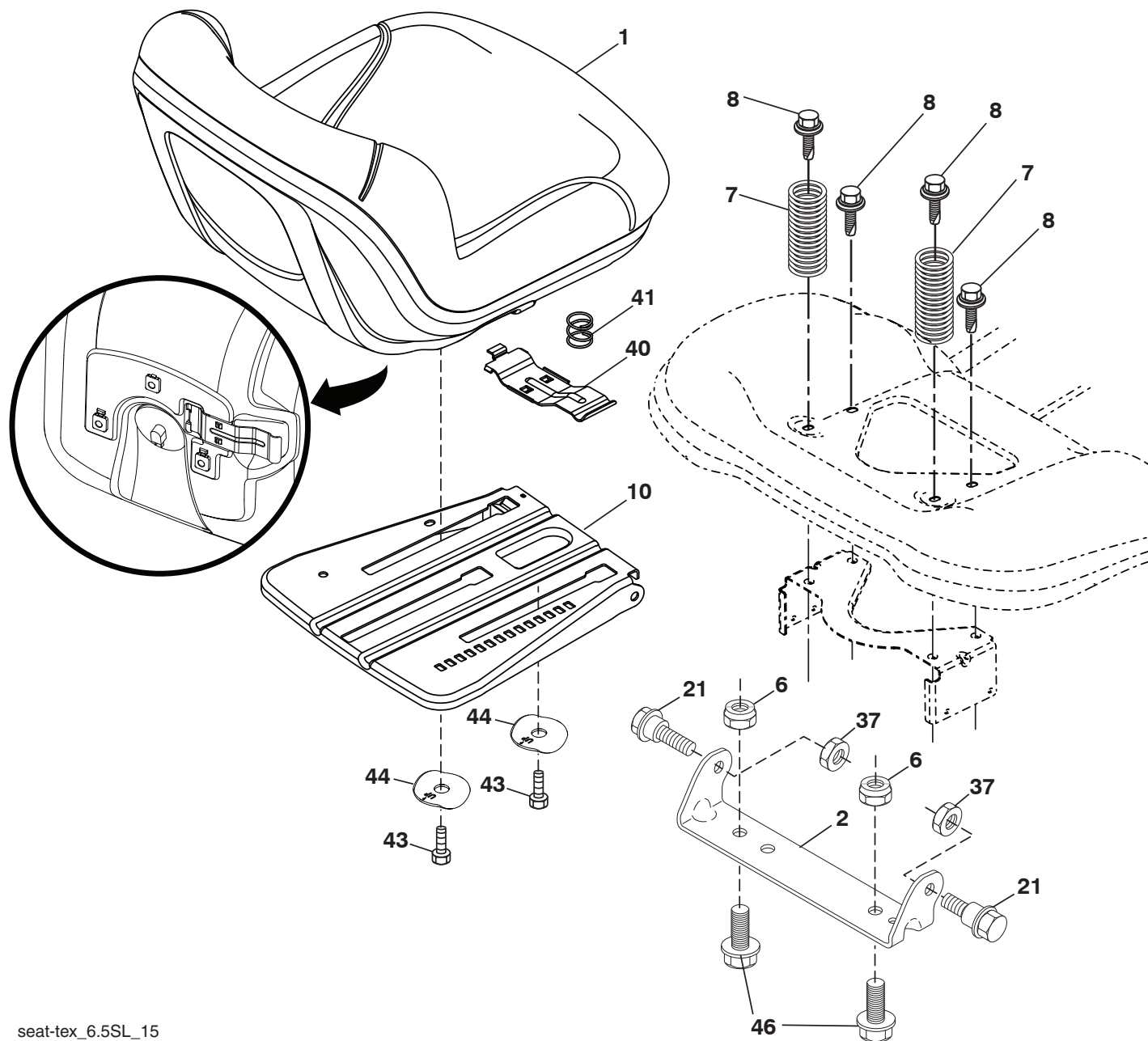
lift-tex_24

KEY PART NO.	NO.	DESCRIPTION
2	532 42 20-27	Shaft Asm., Lift
3	596 27 06-01	Lever Asm., Lift RH
7	580 96 23-01	Grip, Lever
10	532 19 63-14	Spring Torsion
41	589 46 49-02	Nut, Lift Link
87	532 19 42-09	Pin Cotter 7/16 Bow Tie Lock
88	532 41 07-10	Spring Lift Assist
89	819 19 19-12	Washer Clear Zinc

KEY PART NO.	NO.	DESCRIPTION
91	589 46 48-05	Link Lift Susp Mower Rear
96	593 84 21-01	Bushing
97	817 00 06-12	Screw 3/8-16 x .75
98	574 82 25-01	Link Lift Susp. Front Mower
114	873 36 07-00	Nut Jam 7/16-20

NOTE: All component dimensions given in U.S. inches
1 inch = 25.4 mm

TRACTOR - MODEL NO. TS 242D (96041044200), PROD. NO. 960 41 04-42 SEAT ASSEMBLY



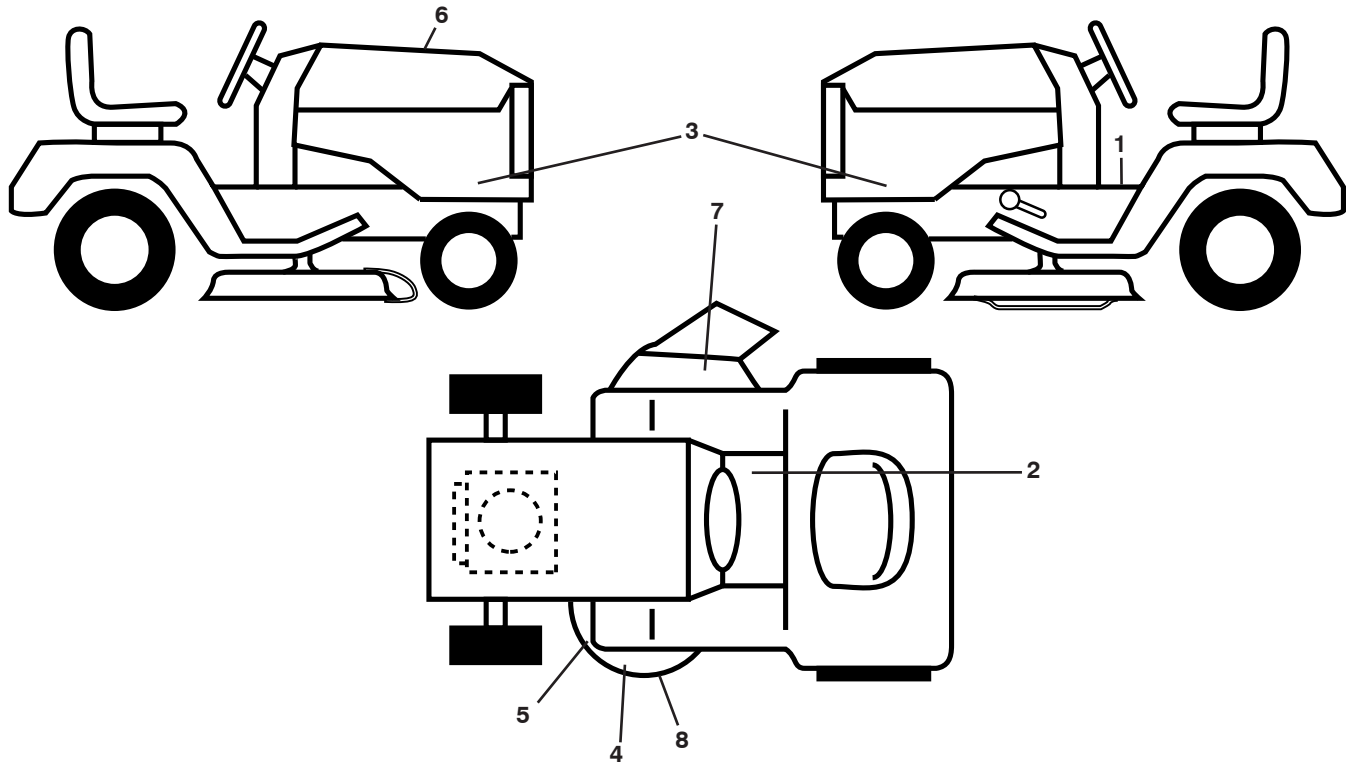
seat-tex_6.5SL_15

KEY NO.	PART NO.	DESCRIPTION
1	532 43 98-22	Seat
2	532 18 01-66	Bracket Pivot Fender
6	873 80 06-00	Nut, Lock w/Ins. 3/8-16 unc
7	589 48 35-01	Spring, Seat Cprsn
8	532 17 18-77	Bolt 5/16-18 unc x 3/4 w/Sems
10	596 65 74-02	Pan, Seat
21	587 90 78-01	Bolt, Shoulder 5/16-18 x 5/8
37	596 58 37-02	Nut, w/Nonmetal

KEY NO.	PART NO.	DESCRIPTION
40	532 19 76-61	Handle Slide Seat
41	532 19 82-00	Spring Latch Seat
43	874 76 06-12	Bolt Fin Hex 3/8-16 unc x 3/4
44	501 05 18-01	Washer Winged 3/8 ID 1.5 OD
46	588 09 04-01	Bolt 3/8-16 x 1, 1.25 OD

NOTE: All component dimensions given in U.S. inches
1 inch = 25.4 mm

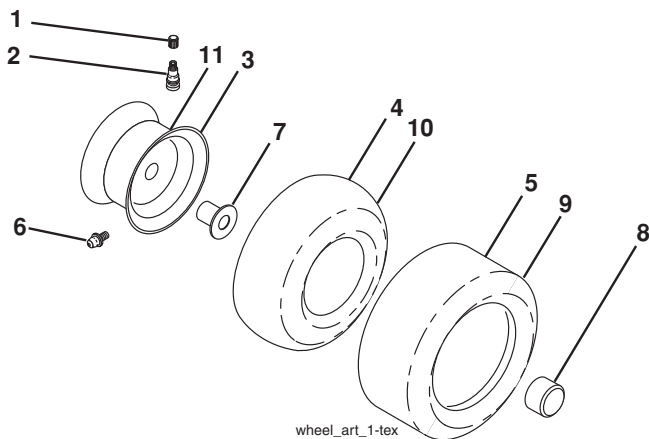
**TRACTOR - MODEL NO. TS 242D (96041044200), PROD. NO. 960 41 04-42
DECALS**



KEY NO.	PART NO.	DESCRIPTION
1	586 04 73-02	Decal, Warning
2	598 46 35-01	Decal, . Consumption
3	597 87 85-01	Decal, Side Panel
4	589 35 79-01	Decal, No Step
5	581 58 00-01	Decal, Deck Sch
6	598 58 94-01	Decal, Replacement
7	586 97 88-01	Decal, Warning
8	590 88 49-01	Decal, Clear Cut

KEY NO.	PART NO.	DESCRIPTION
--	581 72 48-01	Decal, Bypass
--	532 43 98-82	Pad, Footrest, LH
--	532 44 15-42	Pad, Footrest, RH
--	114 19 86-49	Manual, Oper.'s (English/Spanish)
--	114 19 94-32	Manual, Oper.'s (French)
--	114 19 90-70	Manual, Oper.'s (Portuguese)
--	114 20 04-80	Manual, Oper.'s (Korean)
--	114 18 03-26	Manual, Parts (English)

WHEELS AND TIRES



KEY NO.	PART NO.	DESCRIPTION
1	532 05 91-92	Cap Valve Tire
2	532 06 51-39	Stem Valve
3	532 13 83-36	Rim Front Service
4	532 00 81-34	Tube Front (Service Item Only)
5	532 10 62-22	Tire Front 15 x 6-6
6	532 12 49-57	Fitting Grease (Front Wheel Only)
7	532 12 49-59	Bearing Flange (Front Wheel Only)
8	532 17 50-39	Cap Axle Blk 1 50 x 1 00
9	532 13 84-68	Tire R T 20 x 8-8
10	532 00 71-52	Tube Rear (Service Item Only)
11	532 13 83-37	Rim Asm 8" Rear Service
--	532 14 43-34	Sealant, Tire (10 oz. Tube)

NOTE: All component dimensions given in U.S. inches
1 inch = 25.4 mm

NOTES



www.husqvarna.com