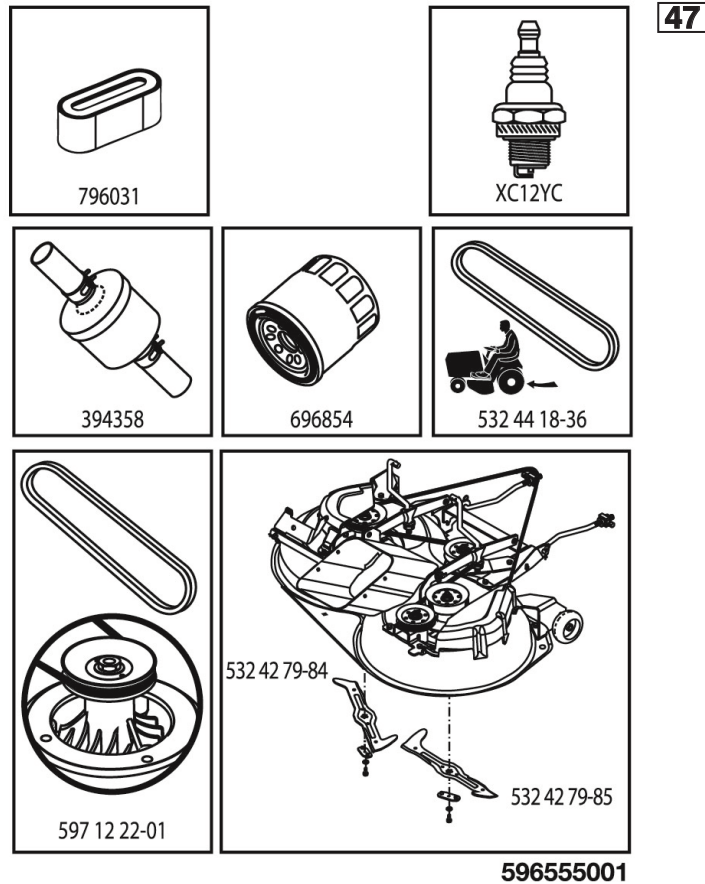


ILLUSTRATED PARTS LIST

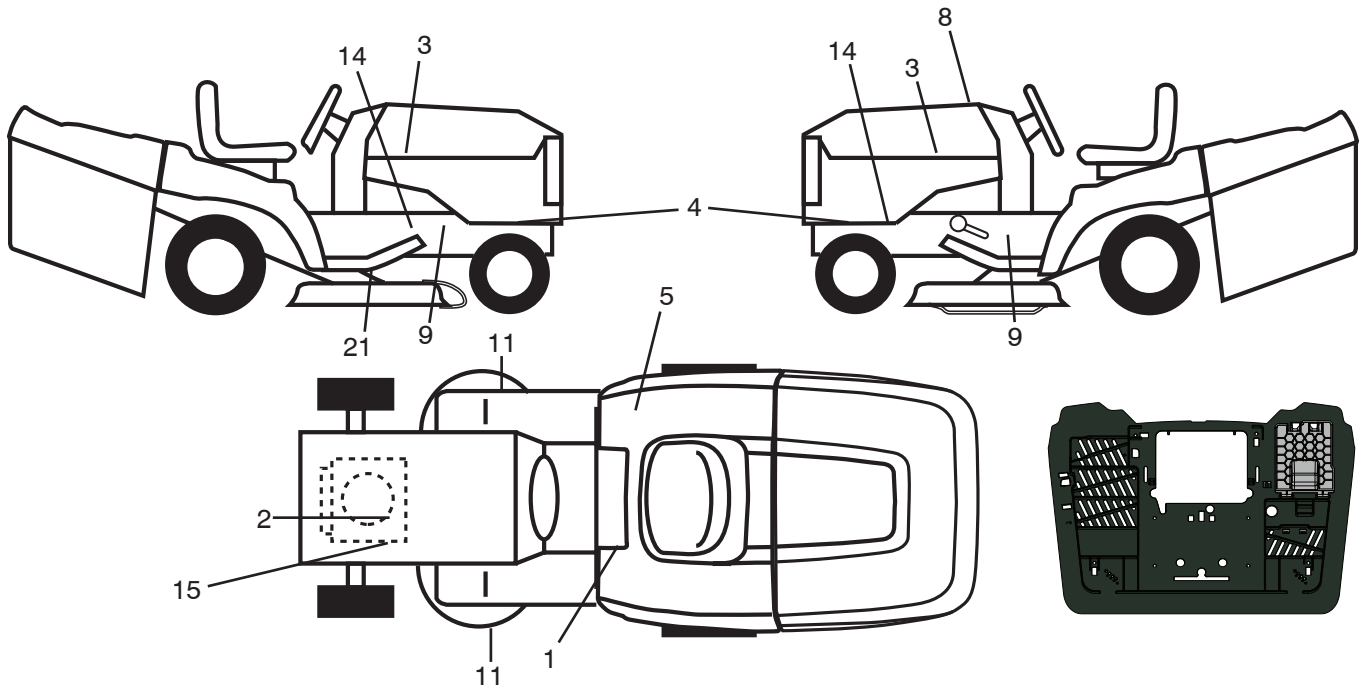
MODEL NO. 96051017900

CUSTOMER CATALOG NO. TC 138

PRODUCT NO. 960 51 01-79



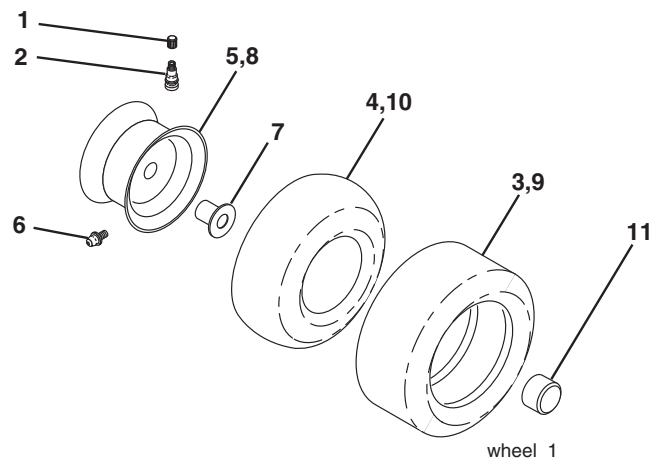
TRACTOR -- MODEL NO. TC 138 (96051017900), PRODUCT NO. 960 51 01-79
DECALS 27



KEY NO.	PART NO.	DESCRIPTION
1	581 57 83-01	Decal, Warning
2	581 57 97-01	Decal, Warning Eng. Sym.
3	501 13 14-01	Decal, Hood RH/LH
4	587 40 71-01	Decal, Side Panel
5	586 06 62-01	Decal, Snowflake
8	596 55 50-01	Decal, Replacement
9	581 57 98-01	Decal, Warning
11	581 57 91-01	Decal, Cut Finger
14	581 57 96-01	Decal, Chassis Hot Muffler

KEY NO.	PART NO.	DESCRIPTION
15	587 73 12-01	Decal, Engine BS
21	592 98 02-01	Decal, Belt Sch CRD
--	532 44 27-44	Decal, Battery Door
--	532 44 14-10	Pad Footrest RH
--	532 44 14-09	Pad Footrest LH
--	114 07 45-20	Manual Operator's (Euro)
--	114 07 46-10	Manual Operator's (Scan)
--	114 07 47-50	Manual Operator's (E-Bloc)
--	114 07 48-40	Manual Operator's (Baltic)

WHEELS & TIRES



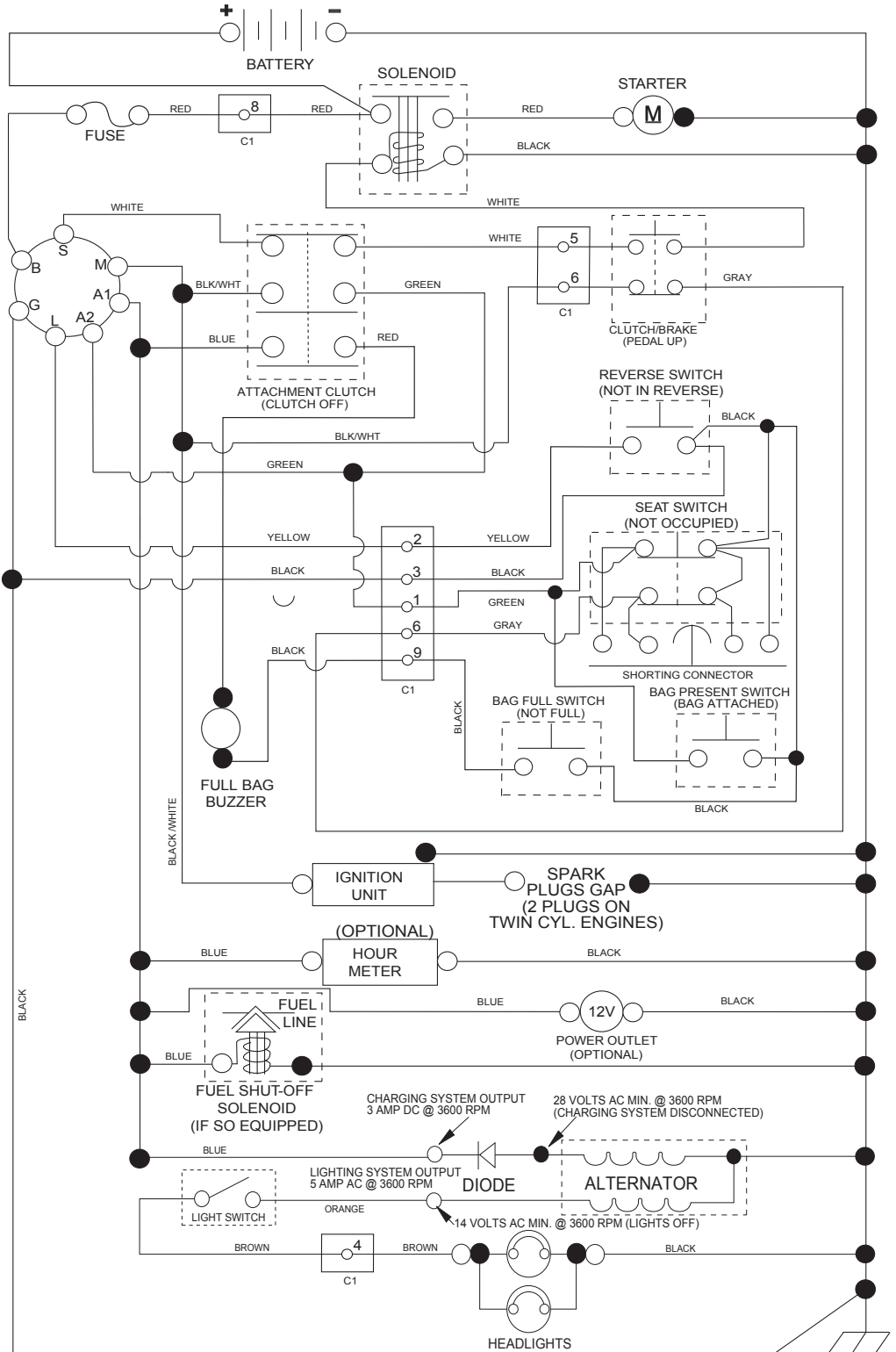
KEY NO.	PART NO.	DESCRIPTION
1	532 05 91-92	Cap Valve Tire
2	532 06 51-39	Stem Valve
3	532 10 62-22	Tire Front 15 x 6-6
4	532 05 99-04	Tube Inner Front #35060
5	532 13 83-36	Rim Asm 6" Front
6	532 00 02-78	Fitting Grease
7	532 00 90-40	Bearing Flange
8	532 13 83-37	Rim Asm 8" Rear
9	532 12 46-35	Tire Rear 18 x 8.5-8
10	532 00 71-52	Tube Rear 9.5 x 8
11	532 17 50-39	Cap Axle
--	532 14 43-34	Sealant, Tire (10 oz. Tube)

NOTE: All component dimensions given in U.S. inches
 1 inch = 25.4 mm

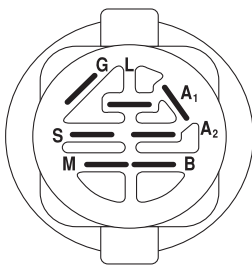
TRACTOR - - MODEL NO. TC 138 (96051017900), PRODUCT NO. 960 51 01-79

SCHEMATIC 38

SCH17

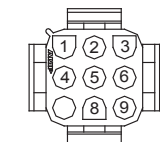


NOTE
 YOUR TRACTOR IS EQUIPPED WITH A SPECIAL ALTERNATOR SYSTEM. THE LIGHTS ARE NOT CONNECTED TO THE BATTERY, BUT HAVE THEIR OWN ELECTRICAL SOURCE. BECAUSE OF THIS, THE BRIGHTNESS OF THE LIGHTS WILL CHANGE WITH ENGINE SPEED. AT IDLE THE LIGHTS WILL DIM. AS THE ENGINE SPEED IS INCREASED, THE LIGHTS WILL BECOME THEIR BRIGHTEST.

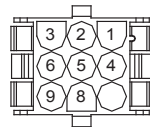


IGNITION SWITCH

POSITION	CIRCUIT	"MAKE"
OFF	M+G+A1	
RUN/OVERRIDE	B+A1	
RUN	B+A1	L+A2
START	B+S+A1	



CHASSIS HARNESS CONNECTOR (C1) (MATING SIDE)



DASH HARNESS CONNECTOR (C1) (MATING SIDE)

WIRING INSULATED CLIPS
 NOTE: IF WIRING INSULATED CLIPS WERE REMOVED FOR SERVICING OF UNIT, THEY SHOULD BE RE-INSTALLED TO PROPERLY SECURE YOUR WIRING.

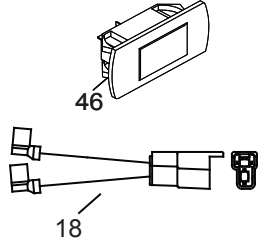
NON-REMOVABLE CONNECTIONS

REMOVABLE CONNECTIONS

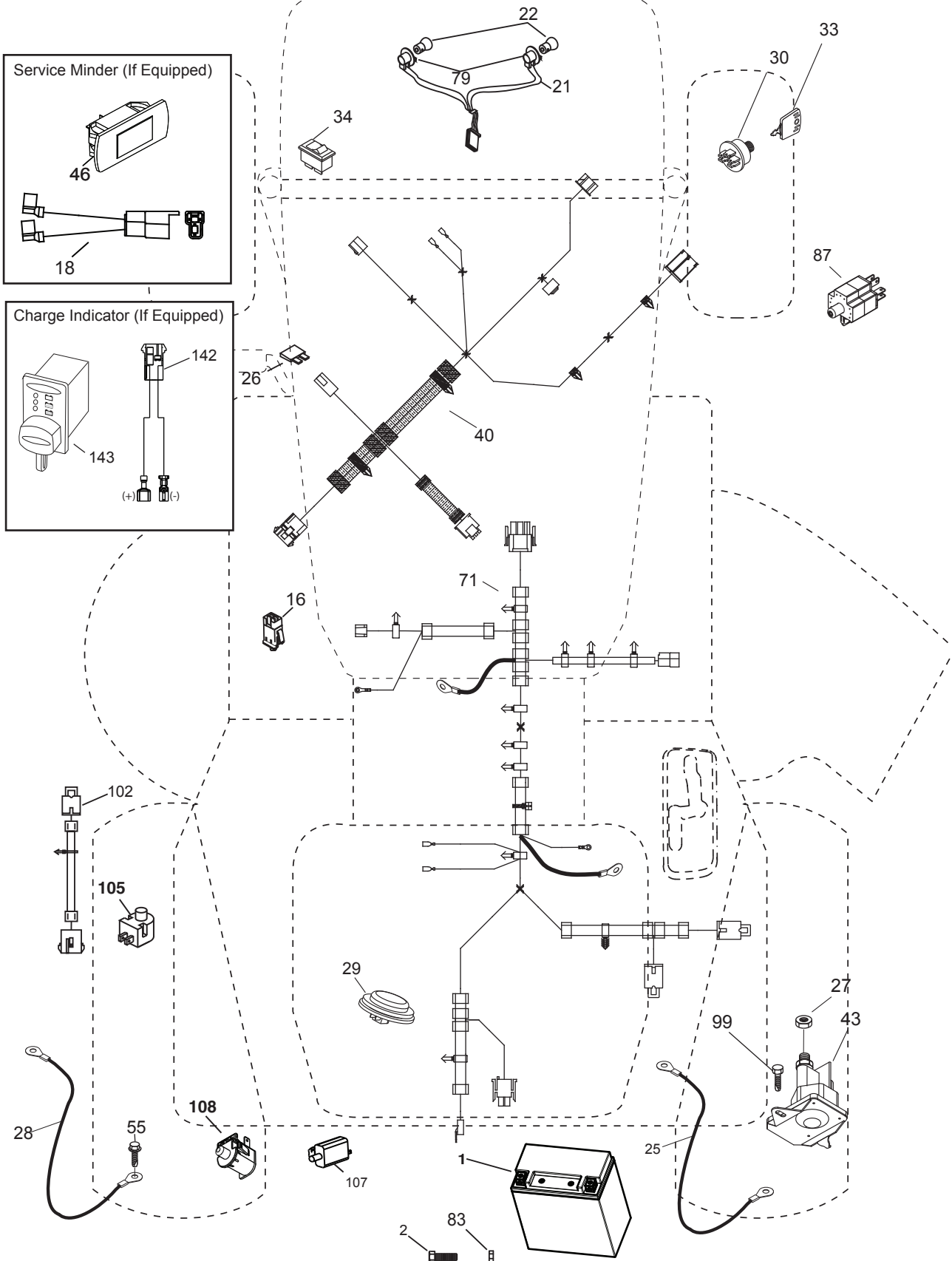
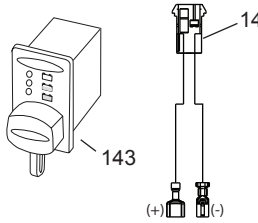
TRACTOR - - MODEL NO. TC 138 (96051017900), PRODUCT NO. 960 51 01-79
ELECTRICAL **32**

TC03S

Service Minder (If Equipped)



Charge Indicator (If Equipped)

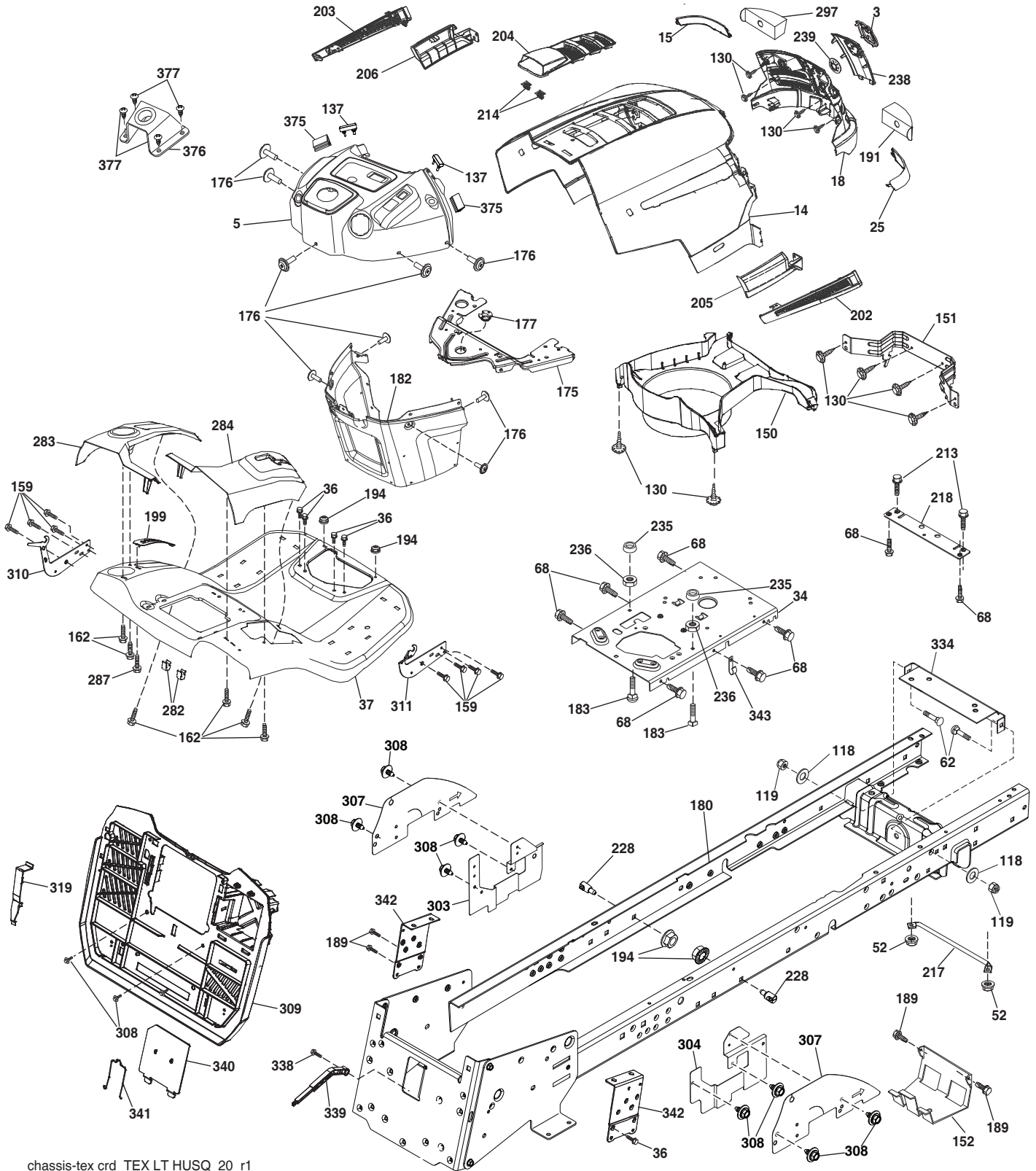


TRACTOR - - MODEL NO. TC 138 (96051017900), PRODUCT NO. 960 51 01-79
ELECTRICAL 32

KEY NO.	PART NO.	DESCRIPTION
1	532 43 71-57	Battery
2	596 32 01-01	Bolt, Hex M6 x 1x 12.4 mm 8.8
16	532 17 61-38	Switch Interlock
21	532 40 02-52	Harness Asm Light w/4152J
22	532 00 41-52	Bulb Light #1156
25	581 48 98-01	Cable Battery Red
26	532 17 51-58	Fuse
27	596 13 36-01	Locknut, KEPS 1/4-20
28	581 48 98-02	Cable Ground Black
29	532 40 15-45	Switch Seat
30	532 19 33-50	Switch Ignition
33	532 41 19-35	Key/Chain
34	532 11 07-12	Switch Light
40	585 84 99-01	Harness Ignition Dash
43	582 04 28-02	Solenoid
46	594 91 91-01	Hourmeter, Srvminder, Rect
55	817 06 05-12	Screw 5/16-18 x 3/4
71	587 26 87-01	Harness Chassis
79	532 17 52-42	Socket Asm.
83	594 08 65-01	Nut, Square M6 x 1
87	532 42 10-60	Switch Railmount
99	817 00 05-12	Screw 5/16-18 3/4
102	532 44 12-62	Harness Jumper
105	532 40 75-68	Switch Reverse
107	532 18 03-79	Switch Full Bagger Indicator
108	532 42 10-62	Switch Snapmount

NOTE: All component dimensions given in U.S. inches
1 inch = 25.4 mm

TRACTOR - - MODEL NO. TC 138 (96051017900), PRODUCT NO. 960 51 01-79
CHASSIS AND ENCLOSURES **39**



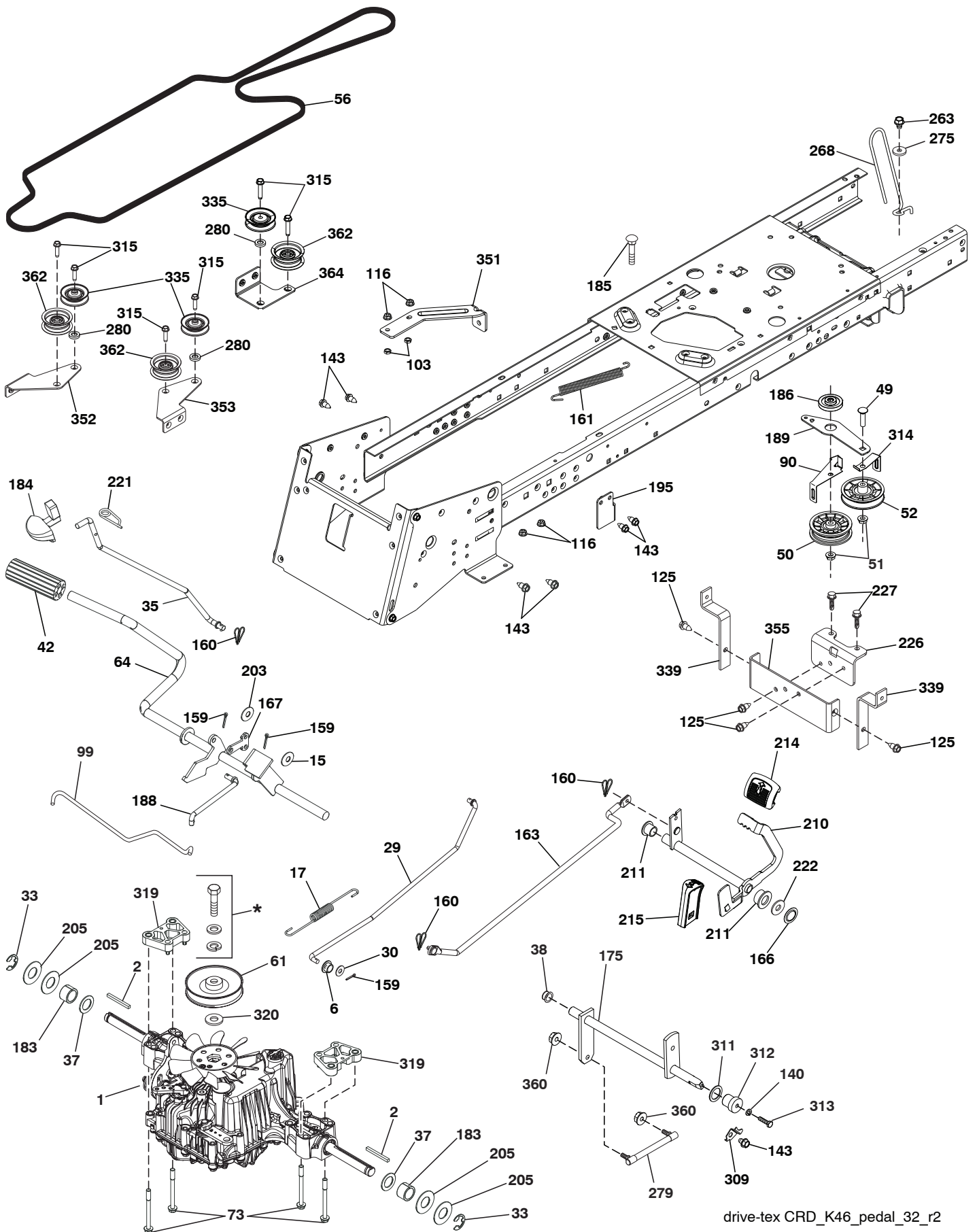
chassis-tex crd_TEX LT HUSQ_20_r1

**TRACTOR - - MODEL NO. TC 138 (96051017900), PRODUCT NO. 960 51 01-79
CHASSIS AND ENCLOSURES **39****

KEY NO.	PART NO.	DESCRIPTION	KEY NO.	PART NO.	DESCRIPTION
3	581 05 63-01	Logo	213	596 03 05-01	Bolt Hex HD 5/16-18 unc x 3/4
5	585 52 98-05	Dash	214	532 19 91-45	Clip Retainer
14	532 44 12-67	Hood	217	532 40 91-67	Rod Pivot Hood
15	532 44 14-28	Lens LH	218	532 19 63-95	X-Piece Hood Stop
18	53243 94-21	Grille	228	593 82 40-01	Stud w/"D" Anti-Rotation
25	532 44 14-27	Lens RH	235	596 56 42-01	Spacer Fender CLR Zn
34	593 94 44-02	Plate Engine	236	873 93 05 00	Nut Center Lock 5/16-18 unc
36	817 06 05-12	Screw 5/16-18 x 3/4	238	532 44 13-74	Trim
37	532 44 13-69	Fender	239	532 40 48-83	Clip Tinnerman
52	596 04 05-01	Nut Lock Hex PRVL 5/16-18	282	532 41 41-10	Clip Retainer
62	596 72 82-01	Bolt Carri 3/8-16 x 1" Gr. 5	283	532 44 05-31	Console Deck Lift
68	596 03 07-01	Screw Hexagon 5/16-18 x 1/2	284	532 44 05-30	Console Shift RH
118	596 56 53-01	Washer 3/8 x 0.08 in ST CLR Zinc	287	817 60 04-06	Screw Hex Washhead 1/4-20 x 3/8
119	596 32 26-01	Nut.Crownlock.3/8-16 unc	297	532 40 66-65	Insert Reflective LH
130	596 32 17-01	Screw #10 x 0.750 BOS Thread	303	589 00 76-02	Shield LH
137	532 40 75-90	Bumper Dash	304	589 41 27-02	Shield RH
150	532 40 66-62	Air Duct	307	587 49 45-01	Shield Upper
151	532 40 78-07	Bracket Pivot	308	532 17 18-77	Bolt 5/16-18 unc x 3/4
152	532 19 95-35	Shield Browning	309	501 18 83-01	Backplate
159	817 00 06-12	Screw Hxwsh Thdrl 3/8-16 x 3/4 Bl.	310	532 44 54-28	Bracket Hangbar Bag LH
162	596 13 41-01	Screw Hex Tap 1/4-15 x 1/2	311	532 44 54-30	Bracket Hangbar Bag RH
175	532 19 94-72	Crossmember	319	532 17 46-62	Bracket Actuator Bagger
176	532 40 07-76	Screw 10-24 x 5/8	334	532 44 25-37	Bracket Engine
177	532 19 52-28	Bushing Steering	338	594 09 39-01	Bolt Shoulder 5/16-18 x .88
180	581 18 71-01	Chassis	339	532 43 66-41	Lever Bagger Full
182	532 40 71-76	Dash Lower	340	532 44 09-31	Door Battery Tray
183	595 30 57-01	Screw.Hexagon.5/16-18 x 1-1/4	341	582 06 08-01	Latch Batter Tray
189	817 00 05-12	Screw 5/16-18 x 3/4	342	582 82 68-02	Support Fender
191	532 41 65-01	Insert Reflective RH	343	532 44 07-49	Clip
194	596 13 57-01	Nut Lock PRVL Torq 5/16-18 x .68	375	586 90 82-01	Dash Clip-On Bumper
199	532 41 87-39	Plate Deck Lift	376	589 45 87-01	Mount Asm Huslt Upper Strng
202	532 44 13-42	Vent Side Hood RH	377	589 45 53-01	Screw 10 x 1/2 ZN PL
203	532 44 13-43	Vent Side Hood LH			
204	532 44 13-75	Vent Top Hood			
205	532 44 13-44	Skirt Side RH			
206	532 44 13-45	Skirt Side LH			

NOTE: All component dimensions given in U.S. inches
1 inch = 25.4 mm

TRACTOR - - MODEL NO. TC 138 (96051017900), PRODUCT NO. 960 51 01-79
 DRIVE **40**



drive-tex CRD_K46_pedal_32_r2

TRACTOR - - MODEL NO. TC 138 (96051017900), PRODUCT NO. 960 51 01-79

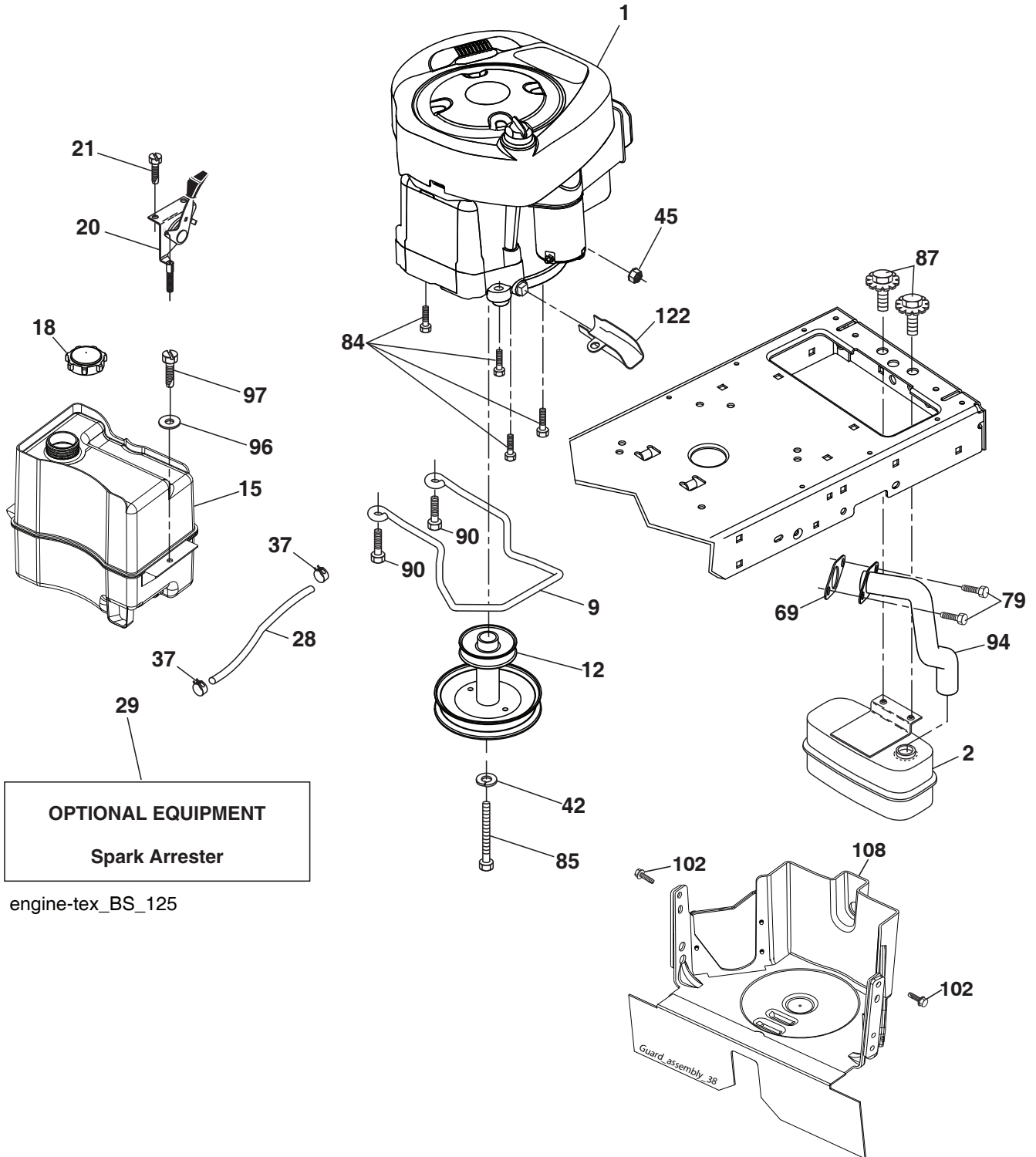
DRIVE 40

KEY NO.	PART NO.	DESCRIPTION	KEY NO.	PART NO.	DESCRIPTION
1	---	Transaxle, TUFFTORQ K46 DF (446488) (Order parts from trans-axle manufacturer.)	188	582 21 70-01	Link Clutch Ground Drive
2	532 12 35-83	Key Square	189	532 43 36-11	Bellcrank Ground Drive
6	532 12 40-28	Bushing Snap	195	580 45 69-01	Bracket Brake Rod
15	596 56 53-01	Washer 3/8 x 0.08 in ST CLR Zinc	203	596 20 41-01	Washer 11/32 x 11/16 x 14
17	532 43 62-27	Spring, Brake	205	532 12 17-48	Washer 25/32 x 1-5/8 16 Ga.
29	532 43 58-81	Rod, Brake	210	532 40 09-80	Rocker Asm. Pedal
30	596 14 02-01	Washer 406 ID x OD x .065	214	532 42 12-63	Pedal Forward
33	812 00 00-01	Ring E	215	586 60 65-02	Pad Pedal Reverse
35	596 87 48-01	Rod Control Park TXLT CLR Zinc	211	532 12 01-83	Bearing Nylon
37	532 18 89-67	Washer .793 x 1.637 x 060	221	532 40 31-87	Retainer Spring
38	532 16 96-13	Nylon Snap In	222	879 21 20-10	Washer Flat
42	532 00 88-83	Cover, Foot Pedal	226	532 40 15-64	Bracket Mount Torque
49	596 13 62-01	Bolt Cup Head 3/8-16 x 3/4	227	596 13 59-01	Bolt Hex 5/16-18 x 3/4 CLR.Zinc
50	532 19 43-27	Idler Flat	263	817 00 06-12	Screw Hexwsh Thdr 3/8-16 x 3/4
51	873 90 06-00	Lock Nut 3/8-16	268	596 88 78-01	Guard Muffler B&S OHV
52	532 19 43-26	Idler V-Groove	275	596 13 54-01	Washer Plain 13/32 x 1 CLR Zinc
56	592 85 51-01	V-Belt, Drive	279	593 89 84-01	Link & Stud-Link.Subasm
61	532 43 77-88	Pulley Transaxle	280	596 03 99-01	Washer Plain 11/32 x 5/8 CLR
64	532 19 78-65	Shaft Asm. Pedal Brake Control	309	532 16 55-81	Plate Fstnr.
73	874 49 05-60	Bolt Hex 5/16-18 x 3.75	311	532 16 98-45	Washer Nylon
90	532 44 36-05	Keeper Belt Clutching	312	532 16 56-14	Hub Tapered
99	532 44 39-47	Rod Bypass	313	596 04 07-01	Bolt Hex.1/4-20 x 1
103	596 43 63-01	Nut Hex 5/16-18 x 0.577" Gr. 5 Zn	314	532 44 47-13	Retainer, Belt
116	596 13 57-01	Nut Lock PRVL Torq 5/16-18 x .68	315	817 58 05-20	Screw Thdrol 5/16-18 x 4.25
125	817 00 05-12	Screw 5/16-18 x 3/4	319	532 43 67-94	Spacer Transaxle Tex CRD
140	596 02 98-01	Spring Lock Washer Square Ends	320	532 18 76-90	Washer Spacer
143	596 03 07-01	Screw Hexagon 5/16-18 x 1/2	335	532 19 95-34	Pulley V Idler Ground Drive
159	596 02 95-01	Pin Cotter 1/8 Dia. x 3/4	339	532 43 68-67	Strap Torue K46 CRD Tex
160	596 02 94-01	Clip Retainer "M"	351	532 43 69-98	Bracket Deck Sway
161	532 10 57-09	Spring, Return, Clutch	352	532 43 58-19	Bracket Idler
163	532 43 66-32	Rod Control	353	532 43 65-77	Bracket Idler RH
166	532 42 91-64	Nut Push .625	355	532 43 56-69	Strap Torque
167	532 40 52-57	Latch Brake Parking	360	532 44 47-14	Nut Hex 5/16-24
175	532 42 93-59	Shaft Asm. Cross Shift	362	532 43 68-12	Idler Flat
183	532 13 70-57	Spacer Axle	364	532 44 30-32	Bracket Idler
184	532 41 14-84	Handle Park Brk.			
185	872 11 06-22	Bolt 3/8-16 unc x 2-3/4			
186	532 19 43-21	Spacer Retainer			

* Parts supplied by manufacturer

NOTE: All component dimensions given in U.S. inches
1 inch = 25.4 mm

TRACTOR - - MODEL NO. TC 138 (96051017900), PRODUCT NO. 960 51 01-79
ENGINE 24



OPTIONAL EQUIPMENT
Spark Arrester

engine-tex_BS_125

**TRACTOR - - MODEL NO. TC 138 (96051017900), PRODUCT NO. 960 51 01-79
ENGINE 24**

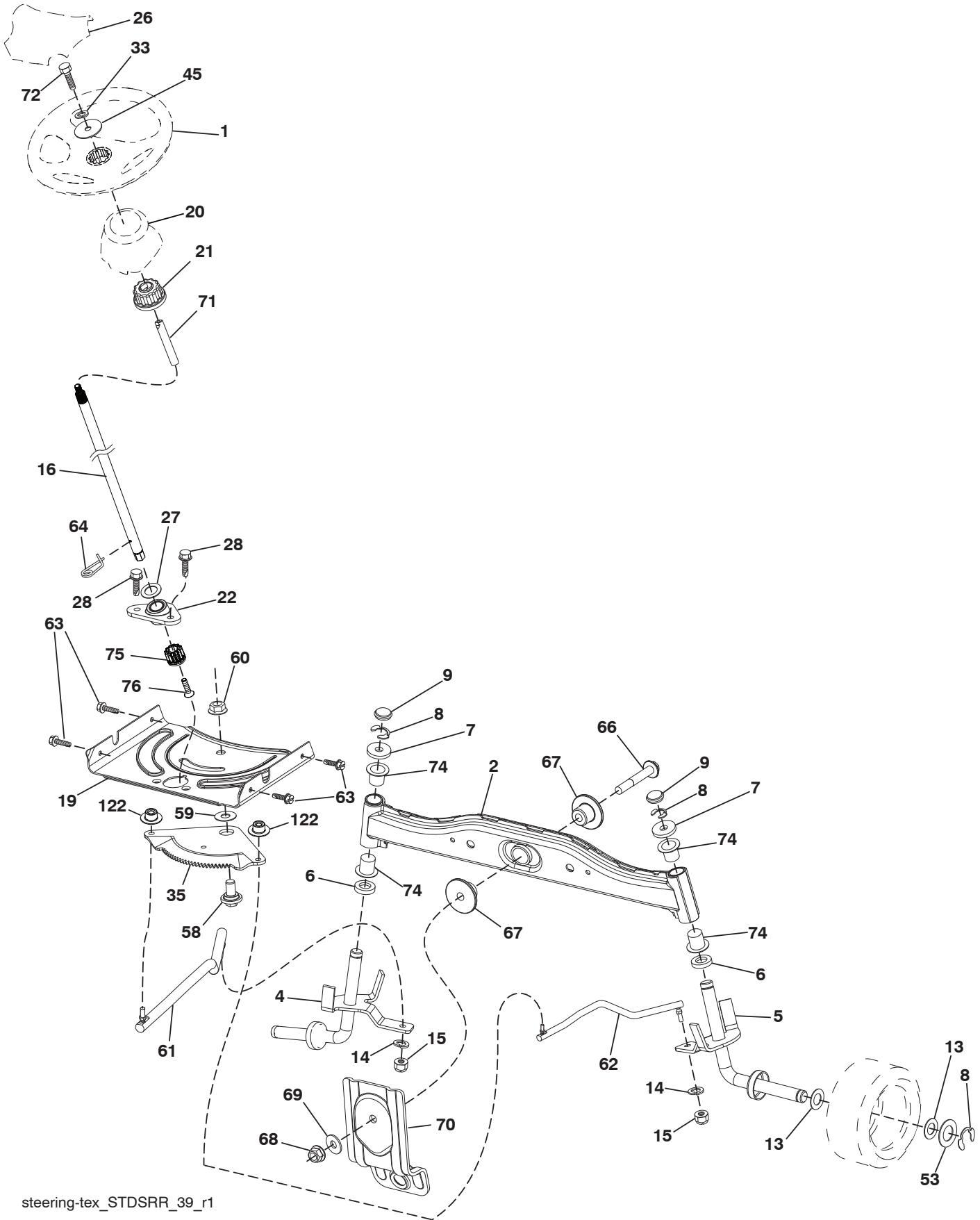
KEY NO.	PART NO.	DESCRIPTION
1	-----	Engine B&S Model No. 31R577-0027-B5 (597359601) (Order parts from engine manufacturer.)
2	532 18 86-55	Muffler
9	501 83 26-02	Keeper Belt Engine
12	586 47 85-01	Pulley Engine
15	581 28 99-01	Tank Fuel 1.5
18	532 43 02-20	Cap Fuel
20	587 24 26-01	Control Throttle
21	596 32 17-01	Screw #10 x .750 BOS Thread
28	532 13 70-40	Fuel Line
29	532 13 71-80	Spark Arrester Kit
37	532 12 34-87	Clamp Hose
42	596 23 89-01	Washer 7/16 in, CLR.Zn
45	596 13 36-01	Locknut KEPS 1/4-20
69	532 16 52-91	Gasket
79	596 13 42-01	Screw Hex Scoket 5/16-18 x 3/4
84	817 06 06-20	Screw
85	501 60 65-01	Bolt Hex 7/16-20 x 4 x Gr. 5-1.5 Thr
87	532 17 18-77	Bolt 5/16-18 unc x 3/4
90	817 00 06-16	Screw 3/8-16 x 1
94	581 88 09-01	Exhaust Tube
96	596 13 53-01	Washer Plain 9/32 x 7/8 CLR Zn
97	817 67 04-12	Screw 1/4-20 x 3/4
102	593 33 76-01	Screw 5/16-18 x 1.00 HWH TRS
108	587 17 95-10	Cover Pulley Eng w/SHLD
122	532 42 19-22	Extension Drain Oil

NOTE: All component dimensions given in U.S. inches
1 inch = 25.4 mm

Engine Power Rating Information

The gross power rating for individual gas engine models is labeled in accordance with SAE (Society of Automotive Engineers) code J1940 (Small Engine Power & Torque Rating Procedure), and rating performance has been obtained and corrected in accordance with SAE J1995 (Revision 2002-05). Torque values are derived at 3060 RPM; horsepower values are derived at 3600 RPM. Actual gross engine power will be lower and is affected by, among other things, ambient operating conditions and engine-to-engine variability. Given both the wide array of products on which engines are placed and the variety of environmental issues applicable to operating the equipment, the gas engine will not develop the rated gross power when used in a given piece of power equipment (actual "on-site" or net power). This difference is due to a variety of factors including, but not limited to, accessories (air cleaner, exhaust, charging, cooling, carburetor, fuel pump, etc.), application limitations, ambient operating conditions (temperature, humidity, altitude), and engine-to-engine variability. Due to manufacturing and capacity limitations, Briggs & Stratton may substitute an engine of higher rated power for this Series engine.

TRACTOR - - MODEL NO. TC 138 (96051017900), PRODUCT NO. 960 51 01-79
STEERING ASSEMBLY **41**



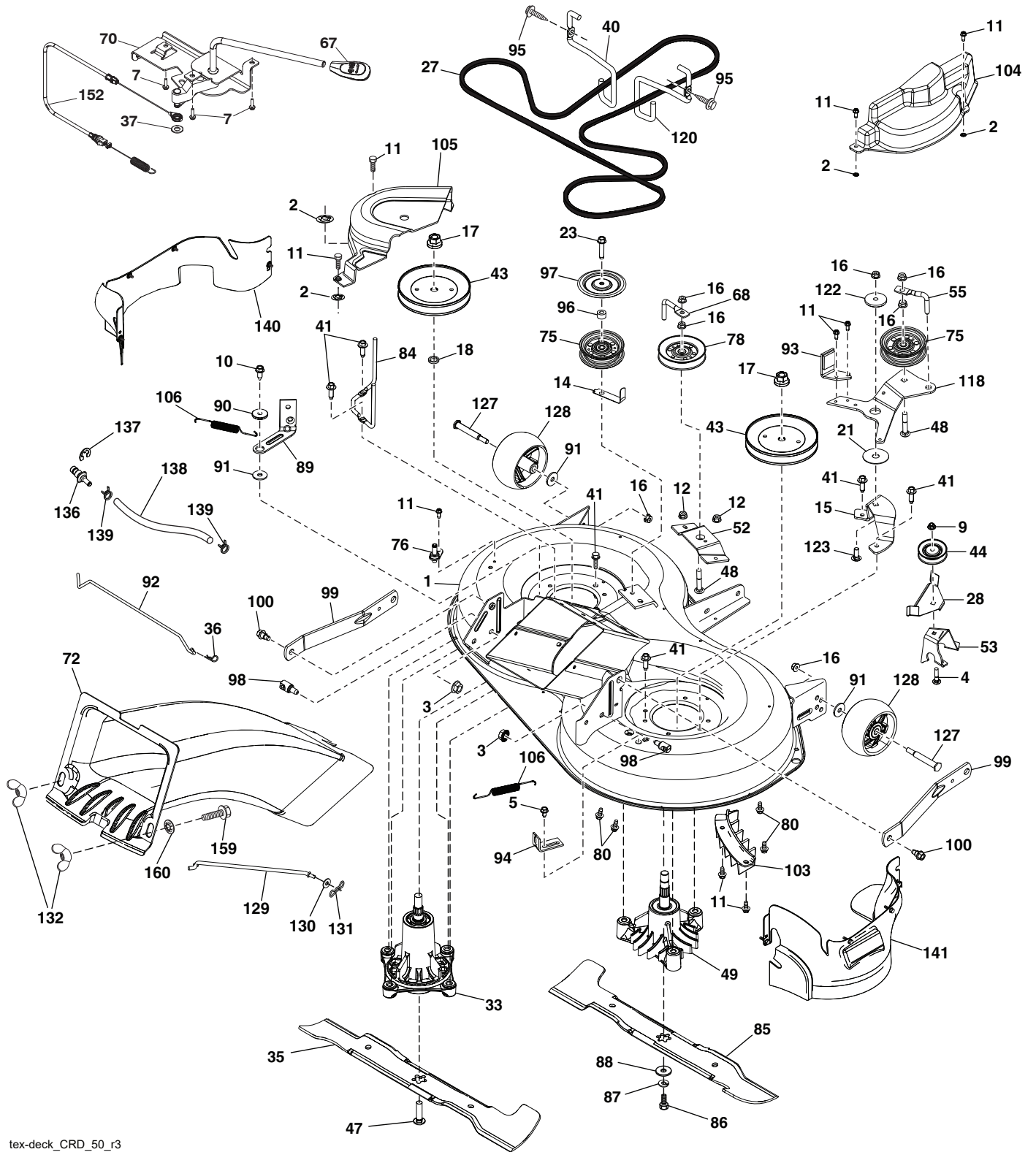
steering-tex_STDSRR_39_r1

TRACTOR - - MODEL NO. TC 138 (96051017900), PRODUCT NO. 960 51 01-79
STEERING ASSEMBLY 41

KEY NO.	PART NO.	DESCRIPTION
1	532 43 99-97	Wheel, Steering
2	532 41 81-68	Axle Asm.
4	532 40 30-87	Spindle Asm., LH
5	532 40 30-88	Spindle Asm., RH
6	532 00 62-66	Washer Thrust .75 x 1.230
7	532 12 17-48	Washer 25/32 x 1-5/8 x 16 Ga.
8	812 00 00-29	Ring, Klip #T5304-75
9	532 12 12-32	Cap, Spindle
13	532 12 17-49	Washer 25/32 x 1-1/4 x 16 Ga.
14	596 23 87-01	Washer Spring Lock .381 ID x .680
15	873 54 06-00	Nut, Crown Lock 3/8-24 unf
16	585 86 92-02	Steering Shaft
19	532 19 47-29	Plate Steering
20	532 44 14-25	Boot, Steering
21	532 18 67-37	Adapter, Wheel Steering
22	585 02 98-02	Bearing
26	532 43 97-43	Insert, Wheel Steering
27	596 93 34-01	Washer Plain
28	817 00 06-12	Screw 3/8-16 x 3/4
33	596 23 88-01	Washer Lock 5/16 Sqr End Zn
35	532 19 47-32	Gear, Sector Plate
45	596 04 00-01	Washer 11/32 x 2-3/8" CLR.Zn
53	532 18 89-67	Washer Hardened .793 x 1.637 x .060
58	532 19 47-47	Bolt Shoulder Sector Pivot CFM
59	532 19 47-48	Washer Thrust Sector Steering
60	873 97 10-00	Nut Flange Lock 5/8-11
61	597 04 78-02	Linkage Asm Draglink LH Raw
62	597 04 79-02	Linkage Asm Draglink RH Raw
63	817 00 05-12	Screw 5/16-18 x 3/4
64	532 19 98-49	Retainer Clip Spring Steering
66	871 02 07-48	Bolt Hex Fghd 7/16-14 x 3 Serr
67	532 19 47-37	Bushing PM Front Axle
68	873 90 07-00	Nut Lock Flange 7/16-14 Gr. 5
69	532 19 91-62	Washer 1.5 x .505 x .118
70	585 33 88-01	Bracket Deck Susp Front
71	532 19 07-52	Shaft Extension Steering
72	596 03 97-01	Bolt, Hex Head, 5/16-18 unc x 4" Gr. 5
74	532 00 33-66	Bearing Col Strg Blk
75	580 68 37-01	Pinion
76	580 68 36-01	Screw Head Sock
122	532 44 49-62	Cap Gear Sector

NOTE: All component dimensions given in U.S. inches
1 inch = 25.4 mm

TRACTOR - - MODEL NO. TC 138 (96051017900), PRODUCT NO. 960 51 01-79
MOWER DECK **44**



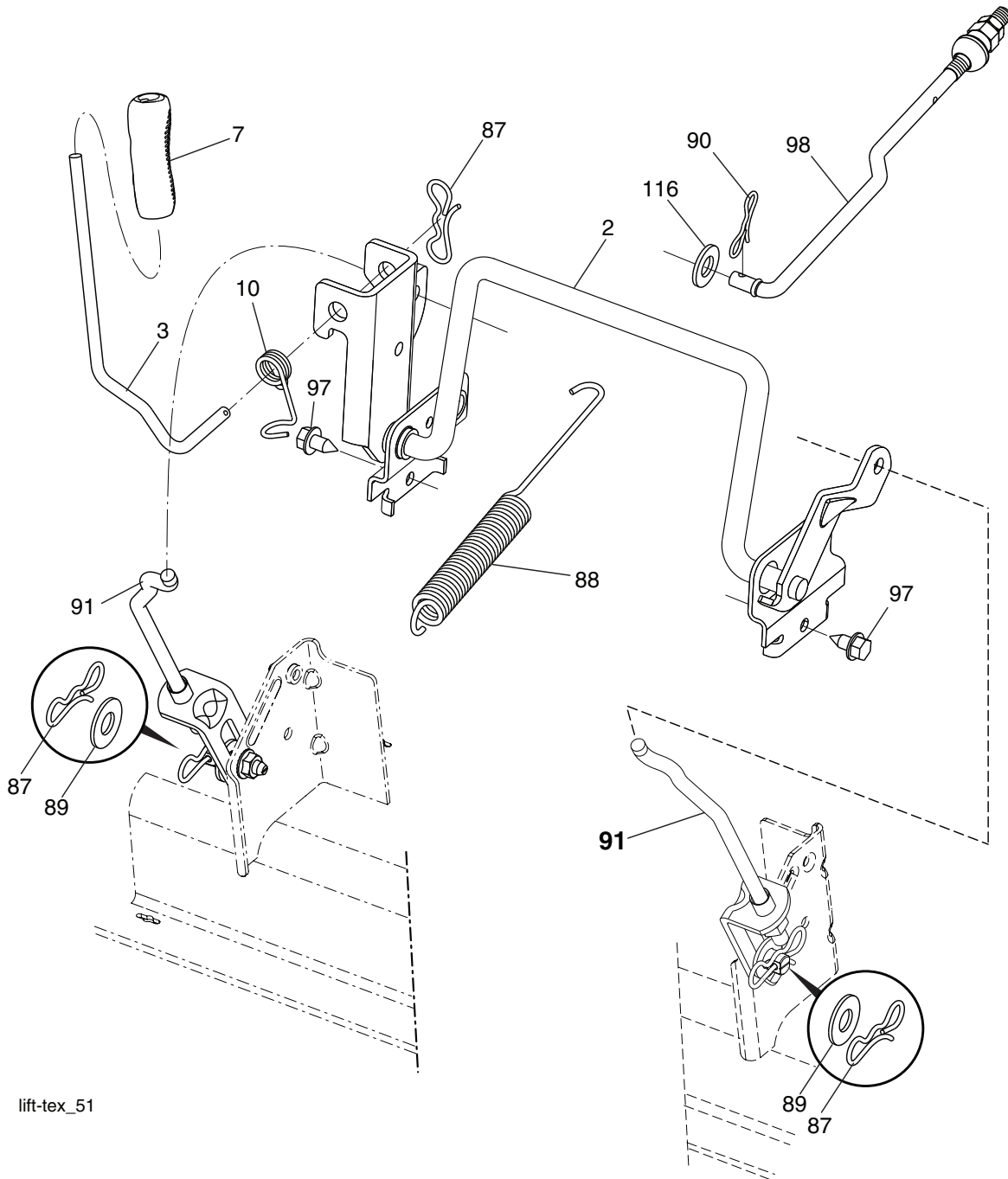
tex-deck_CRD_50_r3

TRACTOR - - MODEL NO. TC 138 (96051017900), PRODUCT NO. 960 51 01-79
MOWER DECK 44

KEY NO.	PART NO.	DESCRIPTION	KEY NO.	PART NO.	DESCRIPTION
1	592 97 00-01	SVC Weldment Kit	85	532 42 79-85	Blade
2	532 42 30-62	Palnut 1/4	86	532 18 17-13	Bolt 3/8-24 x 1.50
3	596 13 57-01	Nut Lock PRVL Torq 5/16-18 x .68	87	596 23 87-01	Washer Spring Lock 381ID x .680
4	872 11 05-10	Bolt Carriage 5/16-18 x 1-1/4 Gr. 5	88	532 14 02-96	Washer Hard Blade
5	817 00 05-10	Bolt 5/16-18	89	532 43 81-24	Arm Brake
7	596 32 17-01	Screw #10 x 0.750 BOS Thread	90	532 19 90-92	Space Retainer
9	585 69 13-01	Nut Hex Flg Nylock	91	596 13 49-01	Washer Plain 3/8 x 7/8
10	817 00 06-16	Screw 3/8-16 x 1	92	592 85 57-01	Rod Brake 97 CRD Link
11	532 13 77-29	Screw 1/4-20 x 5/8	93	592 85 49-02	Arm Brake
12	594 94 44-01	Nut Hexagon Flange 5/16-18	94	532 19 72-50	Bracket Clutch Cable
14	532 15 60-85	Keeper Belt Idler	95	817 00 06-12	Screw Hexwsh 3/8-16 x 3/4
15	592 85 47-02	CRD Idler Arm Mount Bracket	96	532 40 02-71	Spacer
16	873 90 06-00	Nut 3/8-16	97	532 18 20-61	Sheild Idler Mower
17	596 13 48-01	Nut Hex 9/16-18 x 1.010	98	593 82 40-01	StudW/"D" Anti-Rotation
18	532 18 76-90	Washer Spacer Mandrel	99	532 19 51-86	Arm Suspension
21	532 17 85-15	Washer Flat Hardened	100	532 19 65-39	Bolt Shoulder
23	596 56 40-03	Bolt Hex 3/8-16 x 1.75 CLR Zinc	103	532 43 69-92	Guard Front Vent
27	597 12 22-01	Belt 97 Manual	104	592 84 81-01	Mandrel Cover RH
28	592 85 56-02	Keeper 97 CRD Angled Indler	105	532 43 87-44	Mandrel Cover LH
33	587 81 97-01	Kit, Mandrel, Nongrease, Tall	106	532 19 32-16	Spring Brake Return
35	532 42 79-84	Blade	118	599 23 63-02	97 CRD Clutching Arm MS431
36	532 00 44-97	Retainer Spring 1" Zinc/CAD	120	532 19 72-59	Keeper Belt Engine RH
37	596 56 53-01	Washer 3/8 x 0.08 in. ST CLR ZN	122	532 16 57-23	Spacer Retainer Mower
40	532 19 72-58	Keeper Belt Engine LH	123	596 98 75-01	Bolt 3/8x 1-1/4" Gr. 5 CLR ZN
41	584 95 39-01	Bolt Hex WSHRHD .313-1/8 x 1.19	127	596 43 44-04	Bolt Shoulder 3/8-16 x 3-5/8"
43	532 19 74-73	Pulley Mandrel	128	589 52 73-01	Wheel Gauge Rally
44	532 19 95-34	Pulley V-Idler GRND DR Plated	129	532 40 48-51	Rod Anti Sway
47	584 30 93-01	Screw LH Blade 7/16 x 1	130	596 13 32-01	Washer 3/32 x 13/16 x 12 Ga.
48	596 13 63-01	Bolt, Cup, Head 3/8-16 x 2	131	532 19 42-08	Pin Cotter 5/16 Bow Tie Lock
49	532 16 55-79	Kit, Mandrel Asm CRD LH Threads SVC	132	532 17 88-99	Knob Handle
52	599 21 07-03	Bracket 97 CRD Center Idler	136	532 43 96-39	Washout Port Hookup
53	595 09 81-03	Bracket, V-Idler Bolt Angled	137	812 00 00-29	Ring Clip
55	598 96 92-01	Keeper, 97 CRD Clutching Arm	138	532 44 07-43	Hose 3/8 Long 12"
67	532 40 30-12	Handle Clutch Cable	139	596 86 74-01	Clamp Hose 3/8 Clear Zinc
68	598 90 38-02	Keeper, Belt, E-Coat MS431	140	501 57 94-01	Guard Asm LH
70	532 40 12-46	Clutch Asm Manual	141	501 57 93-01	Gaurd Asm RH
72	582 03 56-01	Chute Upper	152	532 44 04-88	Cable Clutch Manual w/Spring
75	597 02 50-01	Pulley Idler Flat CLR ZN	159	872 14 06-14	Bolt 3/8-16 unc x 1-3/4
76	532 43 96-40	Washout Port	160	532 16 89-37	Nut Push
78	532 17 39-02	Pulley Idler V-Gr. Plated 4.25	--	596 55 13-01	Replacement Mower Complete
80	595 90 16-01	Bolt.Cup 5/16-18 x 3/4.CLR.Zinc			
84	589 67 61-02	Keeper Belt Mandrel			

NOTE: All component dimensions given in U.S. inches
1 inch = 25.4 mm

TRACTOR - - MODEL NO. TC 138 (96051017900), PRODUCT NO. 960 51 01-79
MOWER LIFT **45**



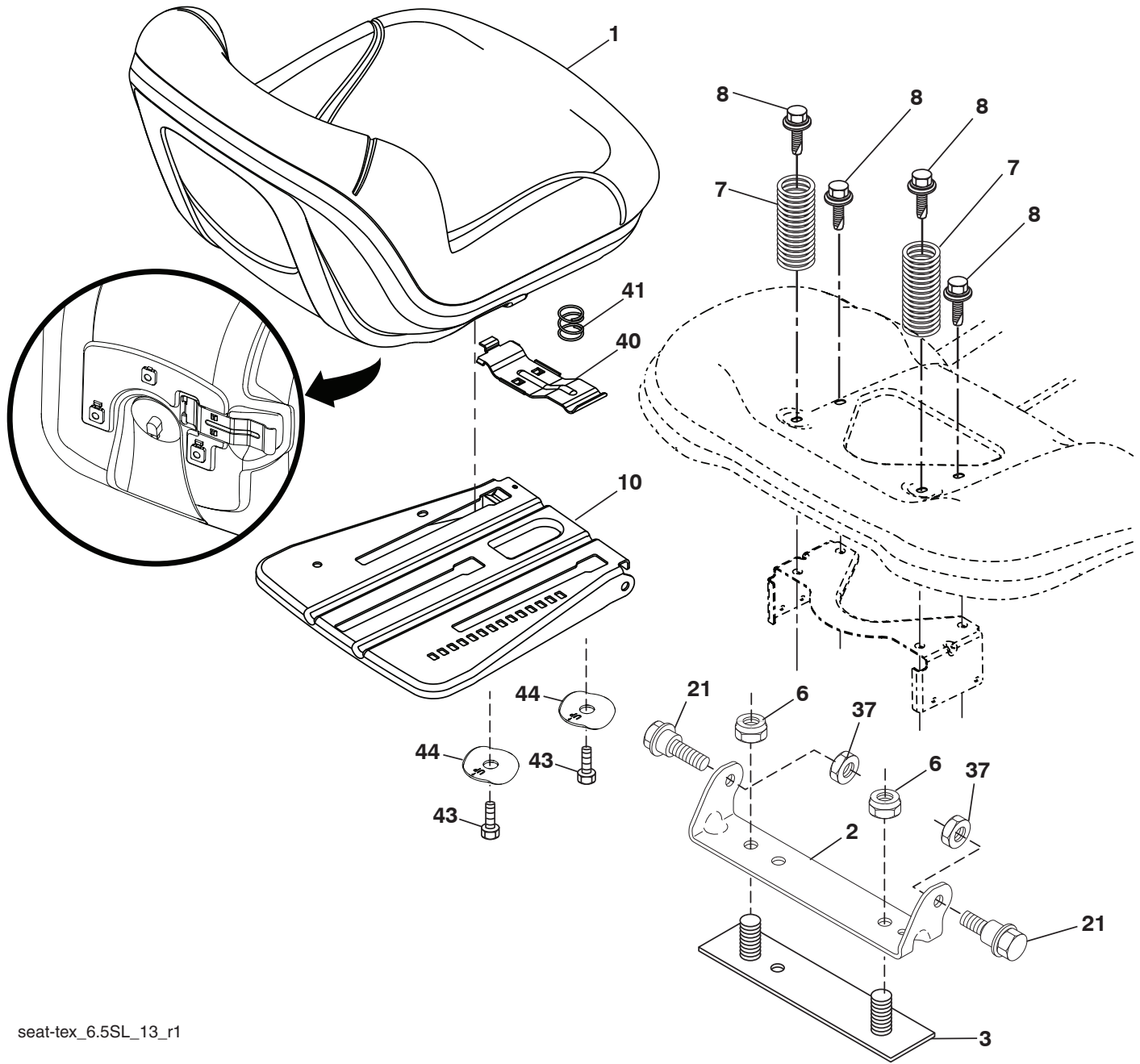
lift-tex_51

KEY NO.	PART NO.	DESCRIPTION
2	532 43 69-96	Deck Lift
3	594 01 80-01	Lever Lift Handle
7	580 96 23-01	Grip, Lever
10	532 19 63-14	Spring Torsion
87	532 19 42-09	Pin Cotter 7/16 Bow Tie Lock
88	532 44 54-96	Spring Lift Assist
89	819 19 19-12	Washer 17/32 x 1-3/16 x 12 Ga.
90	532 19 42-08	Pin Cotter 5/16 Bow Tie Lock
91	589 46 48-04	Link Assy Lift Rear

KEY NO.	PART NO.	DESCRIPTION
97	596 56 40-01	Hex Bolt W/Collar 3/8-16 x 0.53
98	581 50 69-06	Link Assy Front MWR SUSP
116	594 97 65-01	Washer Round 5/32 x 15/16 x .065

NOTE: All component dimensions given in U.S. inches
1 inch = 25.4 mm

**TRACTOR - - MODEL NO. TC 138 (96051017900), PRODUCT NO. 960 51 01-79
SEAT ASSEMBLY 42**



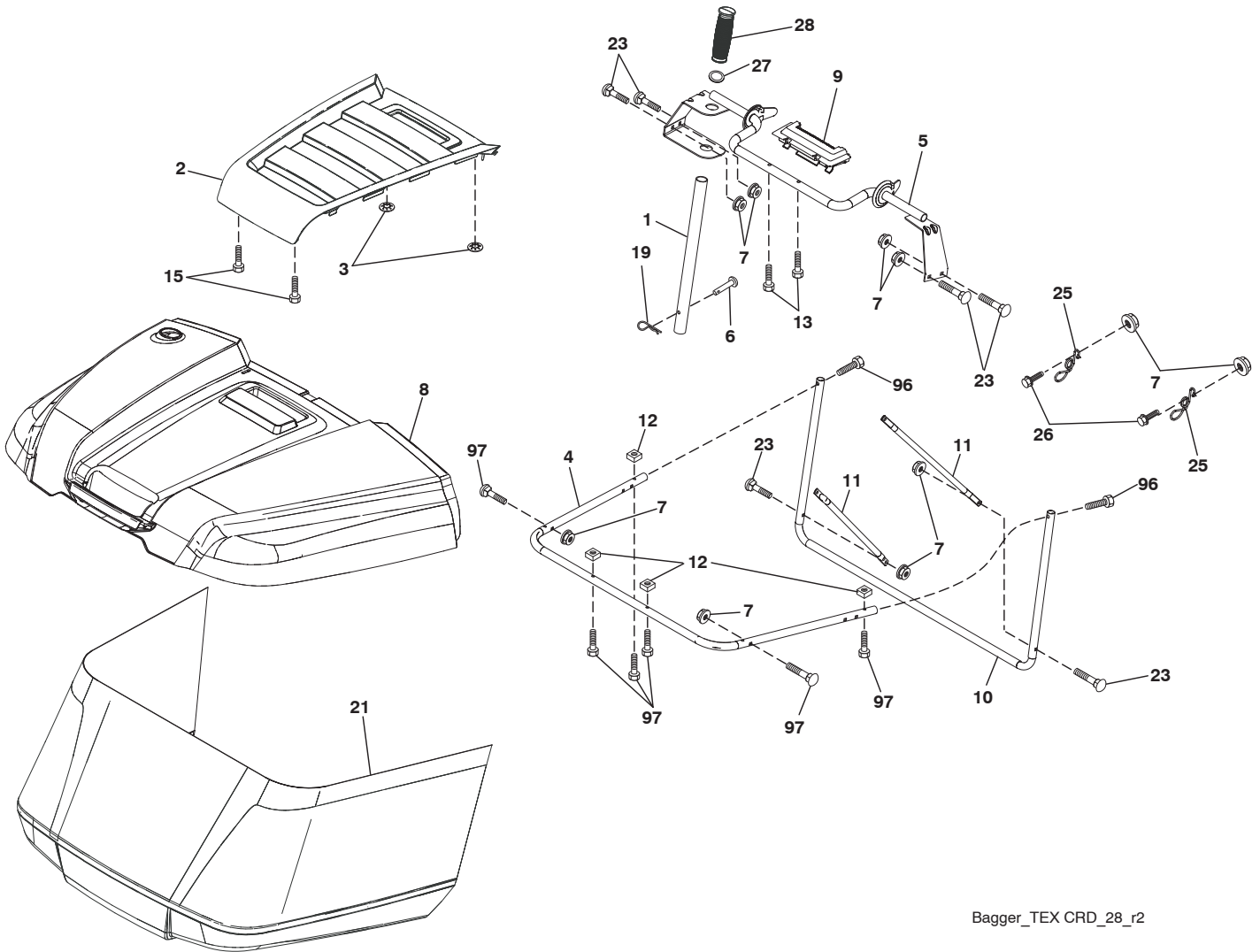
seat-tex_6.5SL_13_r1

KEY NO.	PART NO.	DESCRIPTION
1	532 43 98-19	Seat
2	532 18 01-66	Bracket Pivot Fender
3	532 14 06-75	Strap, Asm. Fender
6	873 80 06-00	Nut, Lock w/Ins. 3/8-16 unc
7	589 48 35-01	Spring, Seat Cprsn.
8	532 17 18-77	Bolt 5/16-18 unc x 3/4 w/Sems.
10	596 65 74-02	Pan, Seat PLate
21	587 90 78-01	Bolt, Shoulder 5/16-18 x 5/8

KEY NO.	PART NO.	DESCRIPTION
37	596 58 37-02	Nut w/Nonmetal INS BLK Zinc
40	595 08 81-02	Handle
41	532 19 82-00	Spring
43	874 76 06-12	Bolt 3/8-16 unc x 3/4
44	501 05 18-01	Washer, Winged

NOTE: All component dimensions given in U.S. inches
1 inch = 25.4 mm

TRACTOR - - MODEL NO. TC 138 (96051017900), PRODUCT NO. 960 51 01-79
BAGGER **46**



Bagger_TEX CRD_28_r2

**TRACTOR - - MODEL NO. TC 138 (96051017900), PRODUCT NO. 960 51 01-79
BAGGER 46**

KEY NO.	PART NO.	DESCRIPTION
1	532 42 86-10	Tube Handle Bagger
2	532 44 13-58	Applique
3	532 41 38-08	Nut Push .156
4	579 78 54-01	Frame Asm Bagger Top
5	532 41 76-32	Frame Asm Top Bagger
6	532 12 68-75	Rivet Drilled
7	873 90 04-00	Nut Hex Flange 1/4-20 unc
8	532 44 12-61	Cover Bagger
9	532 41 76-29	Insert Handle Bagger
10	532 43 67-70	Frame Front
11	532 43 67-71	Tubing Brace Bagger
12	532 42 17-93	Nut Square 1/4
13	532 42 17-80	Screw 1/4 x 1.150
15	532 42 18-01	Screw #8 Flat Head Drill Tip
19	532 19 42-08	Cotter Pin 5/16 Bow Tie
21	532 44 83-06	Bag Asm
23	872 04 04-10	Bolt Carr. 1/4-20
25	532 42 16-14	Spring Latch Bagger
26	817 49 04-12	Screw 1/4-20 x 3/4
27	532 42 12-62	Grommet Rubber
28	532 16 57-87	Grip Handle Black
96	501 40 66-01	Screw Hex Cap 1/4-20 x 1.500
97	590 10 57-01	Screw Torx Butn HD 1/4-20-1.5"

NOTE: All component dimensions given in U.S. inches
1 inch = 25.4 mm

