



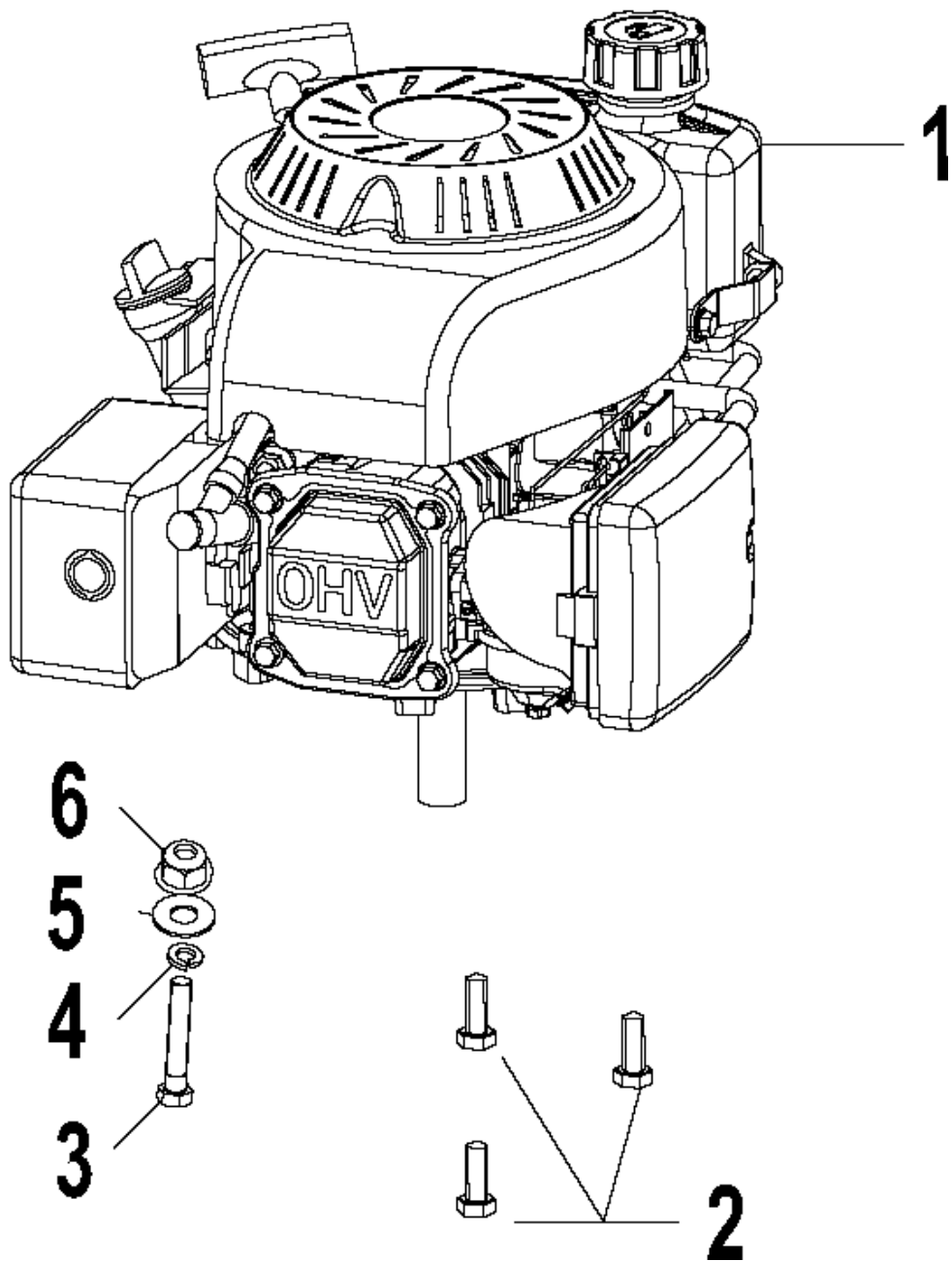
SPARE PARTS LIST

LAWN MOWERS: CONSUMER
WALK-BEHINDS

LC 219, 2019-04

A

LC219 ENGINE



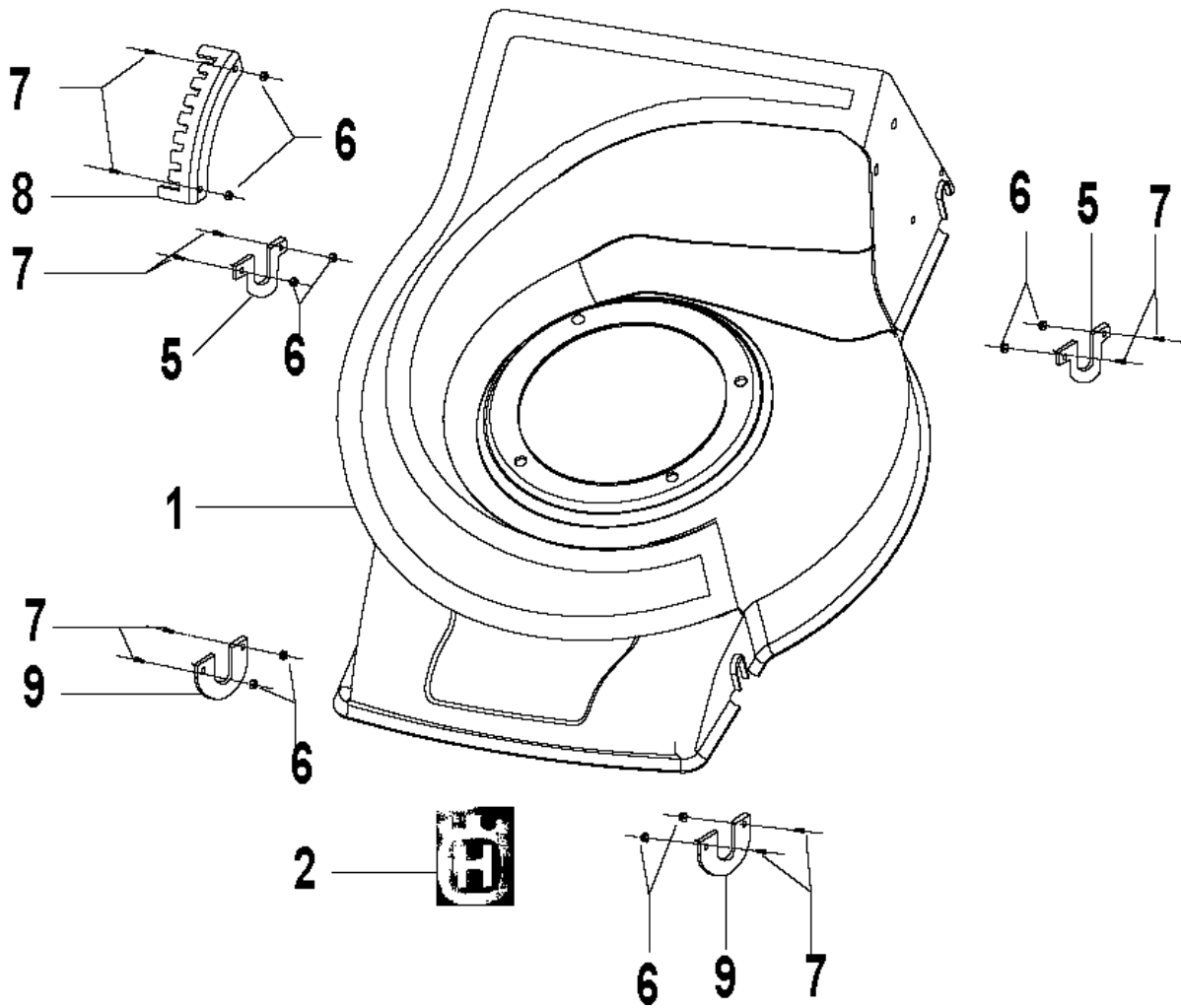
ENGINE

LC 219, 2019-04

Ref	Part No	Description	Remark	QTY KIT
1	597 87 68-01	ENGINE		1
2	581 40 69-01	BOLT	3/8-16x25.4 Bolt for engine	3
3	597 87 64-01	BOLT	M8x50 Bolt	1
4	581 40 18-01	WASHER	φ8 spring	1
5	581 40 22-01	WASHER	φ flat	1
6	581 64 20-01	NUT	nut self lock	1

B

LC219 DECK



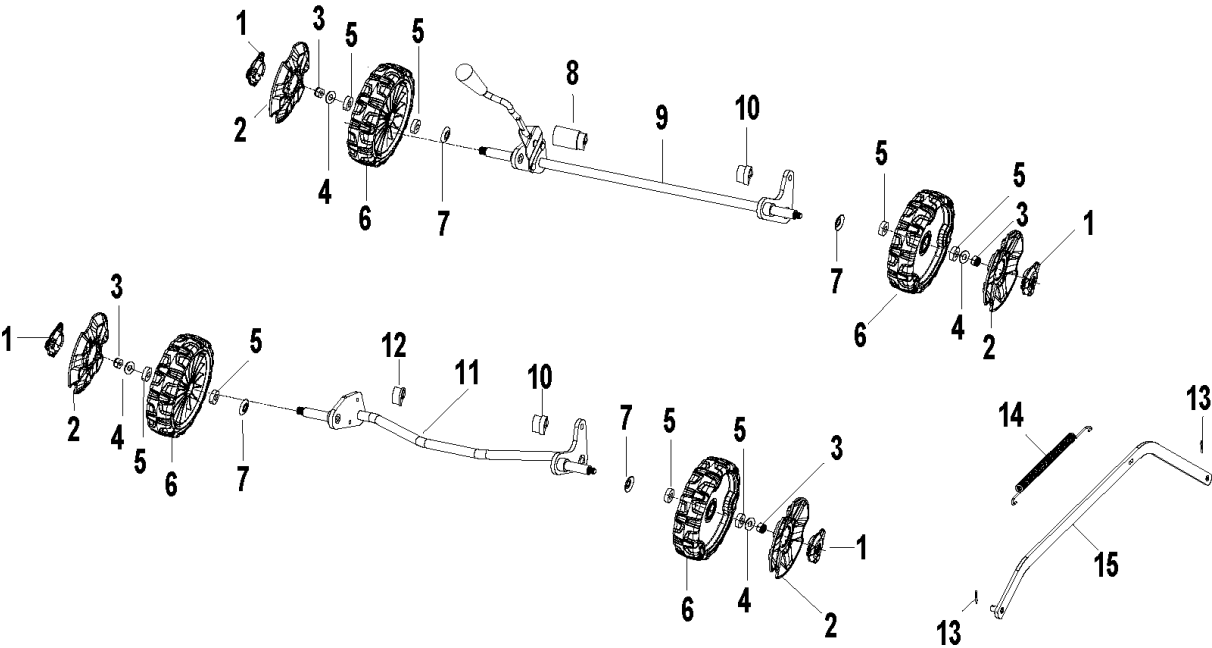
DECK

LC 219, 2019-04

Ref	Part No	Description	Remark	QTY KIT
1	597 87 67-01	CHASSIS ASSY	19"	1
2	581 86 11-01	LABEL	HUS LOGO	1
5	597 78 05-01	BRACKET	Rear axle bracket	2
6	581 40 08-01	NUT	Locknut of Nylon M5	4
7	581 40 04-01	BOLT	M5x12 Hex Bolt	5
8	597 78 08-01	ADJUSTER	Height Adjust	1
9	597 78 04-01	BRACKET	Front axle bracket	2

C

LC219 WALKING SYSTEM



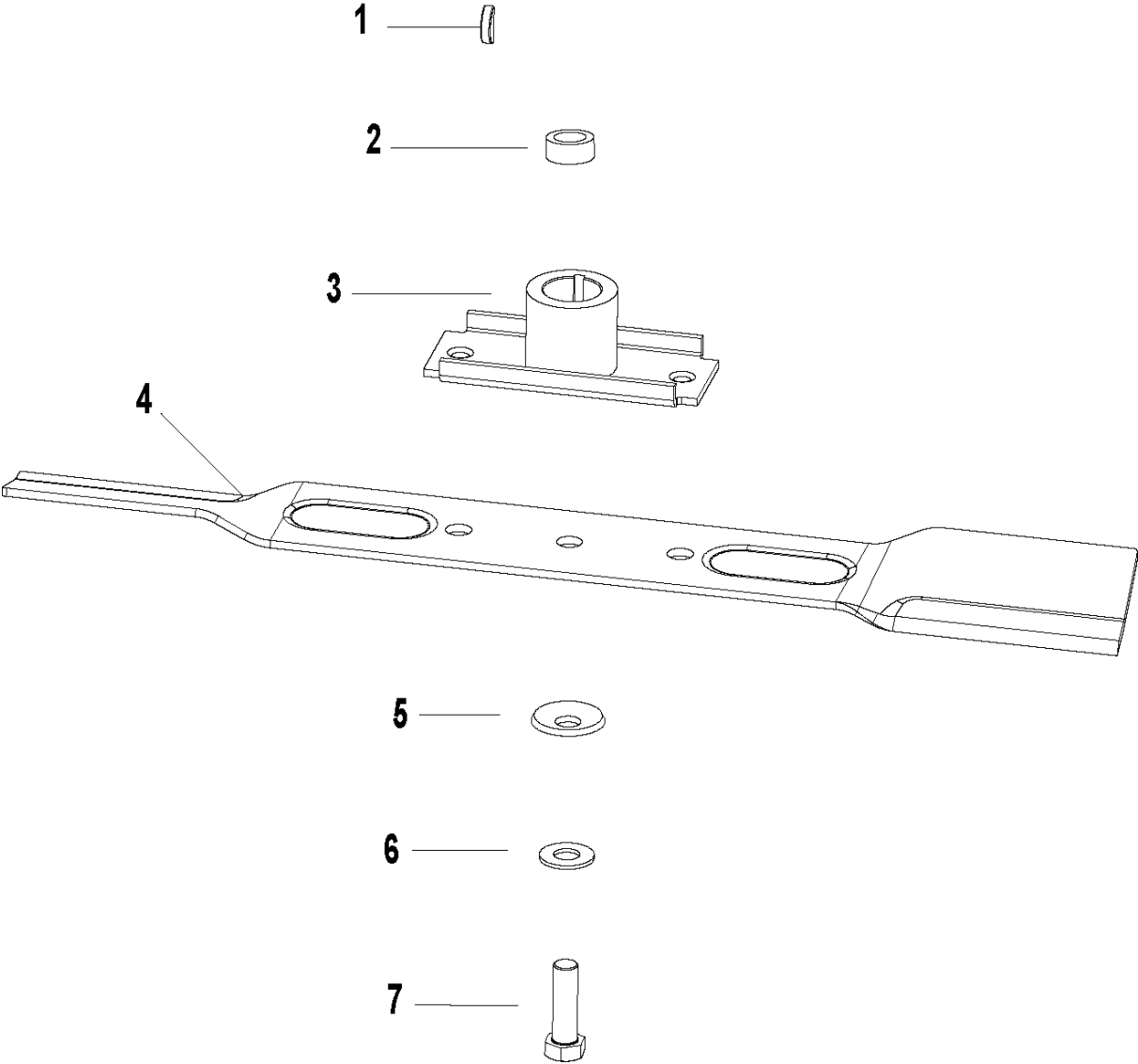
WALKING SYSTEM

LC 219, 2019-04

Ref	Part No	Description	Remark	QTY KIT
1	585 68 41-01	COVER	Small wheel cover	4
2	585 68 40-01	COVER	wheel cover	4
3	581 40 11-01	NUT	Locknut of Nylon M8	4
4	581 40 22-01	WASHER	φ8 flat	4
5	585 68 38-01	BEARING	6001 Bearing	8
6	585 68 34-01	WHEEL	210 Wheel&Tire from	4
7	585 68 50-01	SEAL	Anti Dust Cap	4
8	581 45 74-01	LINING	Extended lining	1
9	597 78 06-01	AXLE	Rear wheel axle assy.	1
10	581 40 41-02	LINING	thick lining	2
11	581 40 39-01	WHEEL	Front wheel axle assy.	1
12	581 40 43-01	LINING	thin lining	1
13	581 40 64-01	CLIP	Clip of connecting link	2
14	581 40 62-01	SPRING	Spring for Connecting link	1
15	597 78 07-01	LINK	Connecting link	1

D

LC219 BLADE



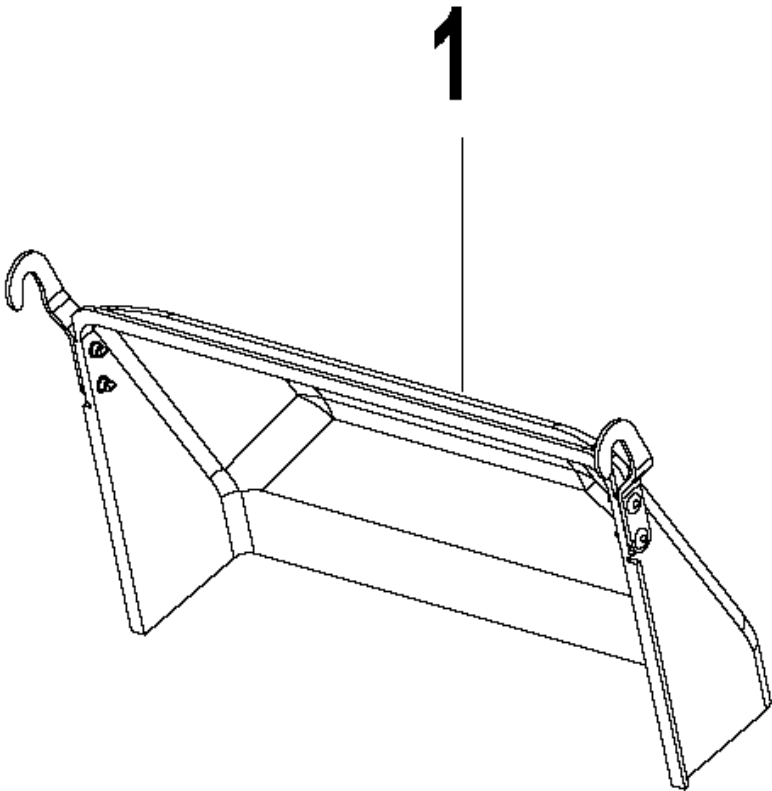
BLADE

LC 219, 2019-04

Ref	Part No	Description	Remark	QTY KIT
1	581 39 64-01	KEY	4.76 half-circle key	1
2	597 78 10-01	LINING	Extended lining $\phi 22 * \phi 12.5 * 3$	1
3	597 87 59-01	ADAPTER	Blade adapter	1
4	597 87 61-01	BLADE	Straight blade	1
5	597 87 77-01	WASHER	wing washer	1
6	581 40 19-01	WASHER	$\phi 10.2 * \phi 21 * 1.5$ Flat	1
7	581 39 55-01	BOLT	3/8-24x32 Bolt	1

E

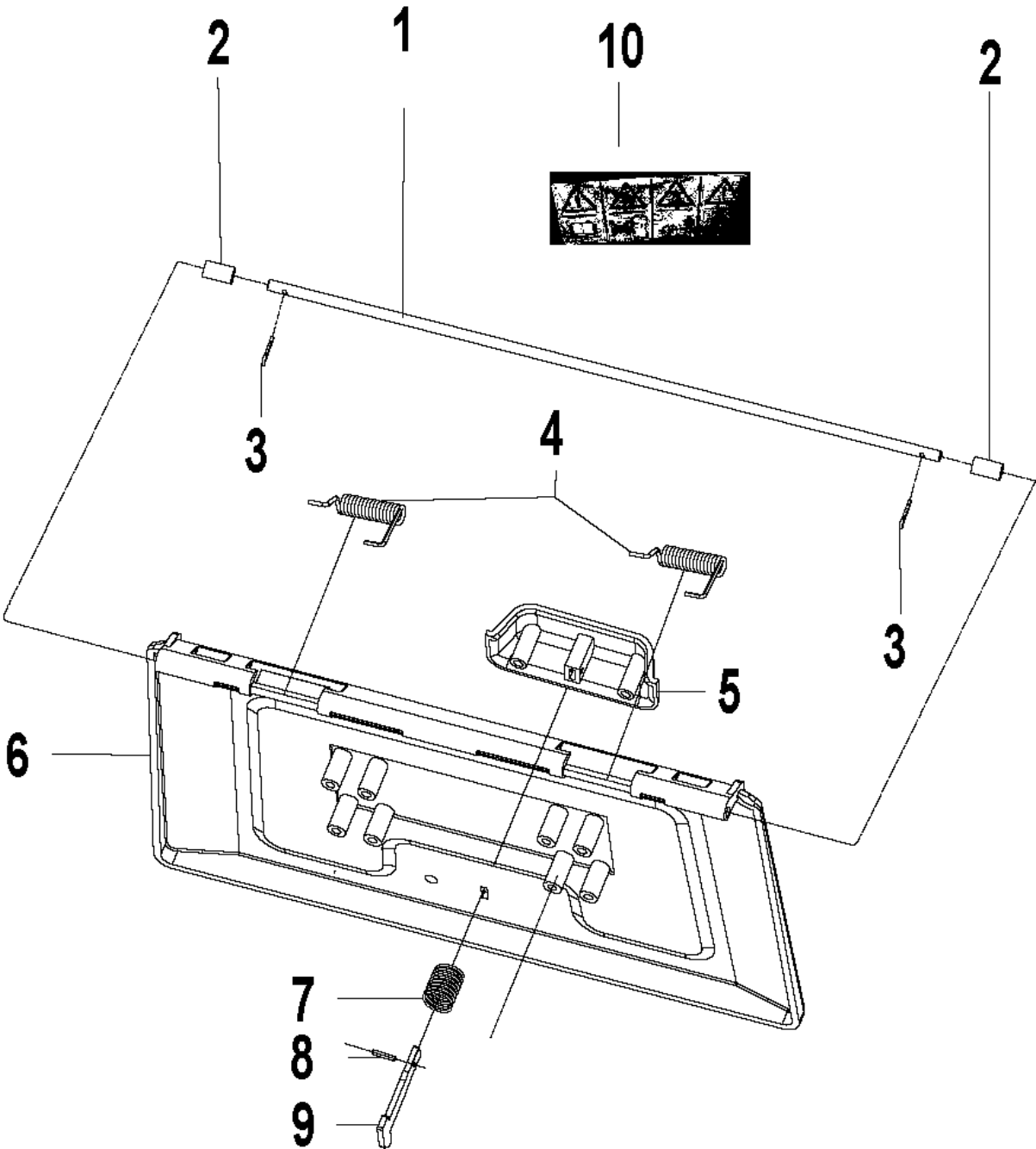
LC219 REAR DISCHARGE CHUTE



Ref	Part No	Description	Remark	QTY KIT
1	597 78 13-01	CHUTE	Rear Discharge Chut	1

F

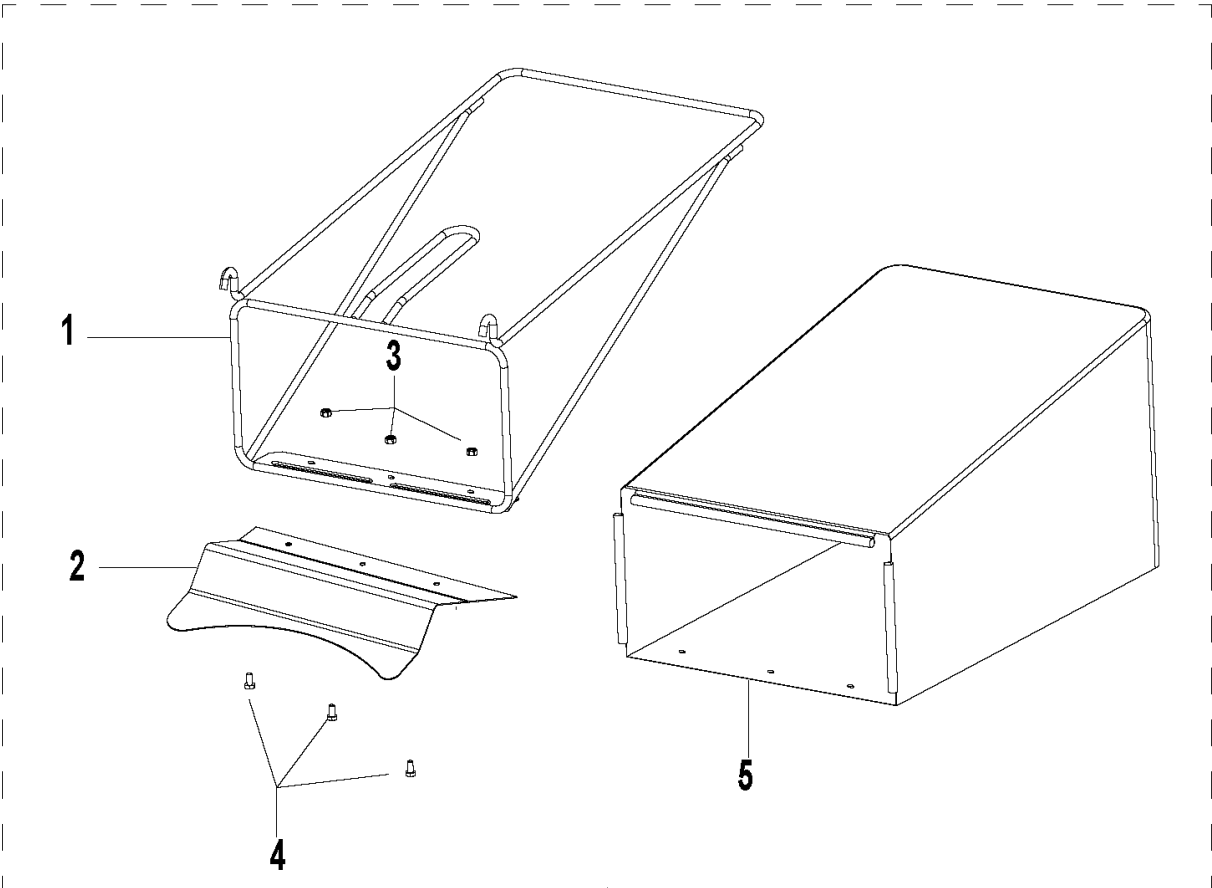
LC219 FLAP



Ref	Part No	Description	Remark	QTY KIT
1	597 78 12-01	AXLE	Axle of Deflector	1
2	581 39 95-01	PIPE	transparent pipe	1
3	581 40 64-01	CLIP	Clip of connecting link	1
4	581 39 96-01	SPRING	Spring for Deflector	1
5	581 45 77-01	HANDLE	Handle for Deflector	1
6	581 39 89-01	DEFLECTOR	Deflector	1
7	581 45 73-01	SPRING	Spring for Deflector Handle	1
8	581 45 72-01	PEN	3x10 Elastic Pin	1
9	581 45 75-01	HOOK	T-type Hook	1
10	581 86 08-01	LABEL	Label, Warning	1

G

LC219 CATCHER



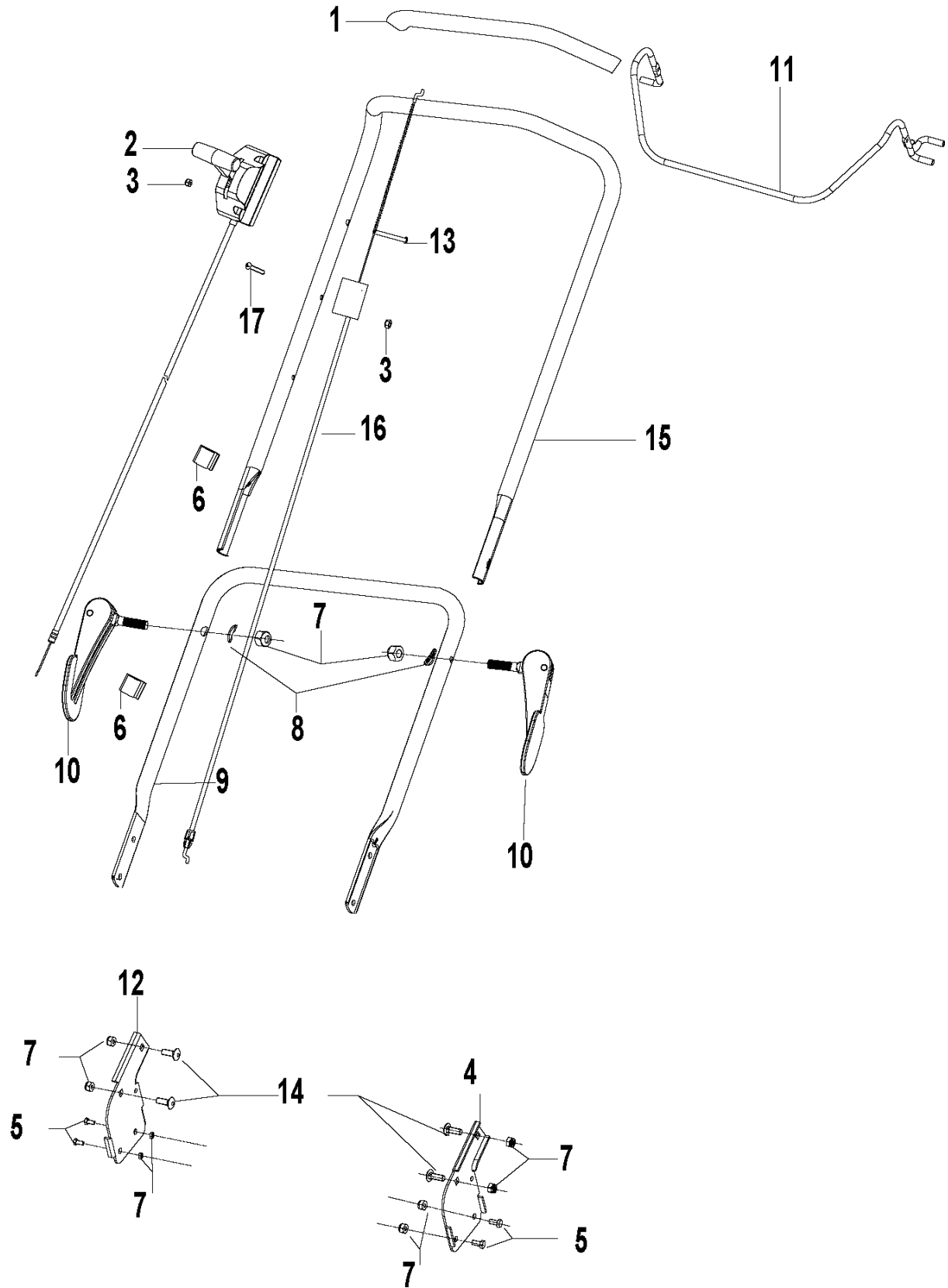
CATCHER

LC 219, 2019-04

Ref	Part No	Description	Remark	QTY KIT
1	597 87 69-01	FRAME	Grass catcher frame	1
2	597 87 73-01	PLATE	Grass catcher bottom plate	1
3	581 40 09-01	NUT	Locknut of Nylon M6	3
4	597 87 76-01	SCREW	Screw	3
5	597 87 60-01	BAG	Fabric bag	1
6	597 87 70-01	GRASS BAG ASSY	Grass catcher complete assy.	1

H

LC219 HANDLE



Ref	Part No	Description	Remark	QTY KIT
1	581 39 94-01	COVER	Sheath for handle	1
2	597 87 66-01	CABLE	Throttle cable Assy.	1
3	581 40 09-01	NUT	Locknut of Nylon M6	2
4	581 40 28-01	BRACKET	Left Bracket for handle	1
5	581 40 07-01	BOLT	Bolt	4
6	581 40 32-02	CABLE	Cli-Cable single	2
7	581 40 11-01	NUT	Locknut of Nylon M8	10
8	581 40 24-01	WASHER	Arc Washer	2
9	597 77 99-01	HANDLE	Lower Handle	1
10	581 40 23-01	SPANNER	Spanner	2
11	597 78 00-01	BRAKE LEVER	Brake Lever	1
12	581 40 30-01	BRACKET	Left Bracket for handle	1
13	581 40 16-01	BOLT	M6x55 Bolt	1
14	581 40 25-01	BOLT	Square neck bolt	4
15	597 87 72-01	HANDLE	Upper Handle	1
16	597 87 65-01	CABLE	Clutch Cable Assy. 285x950	1
17	597 87 63-01	BOLT	M6x35 Bolt	1