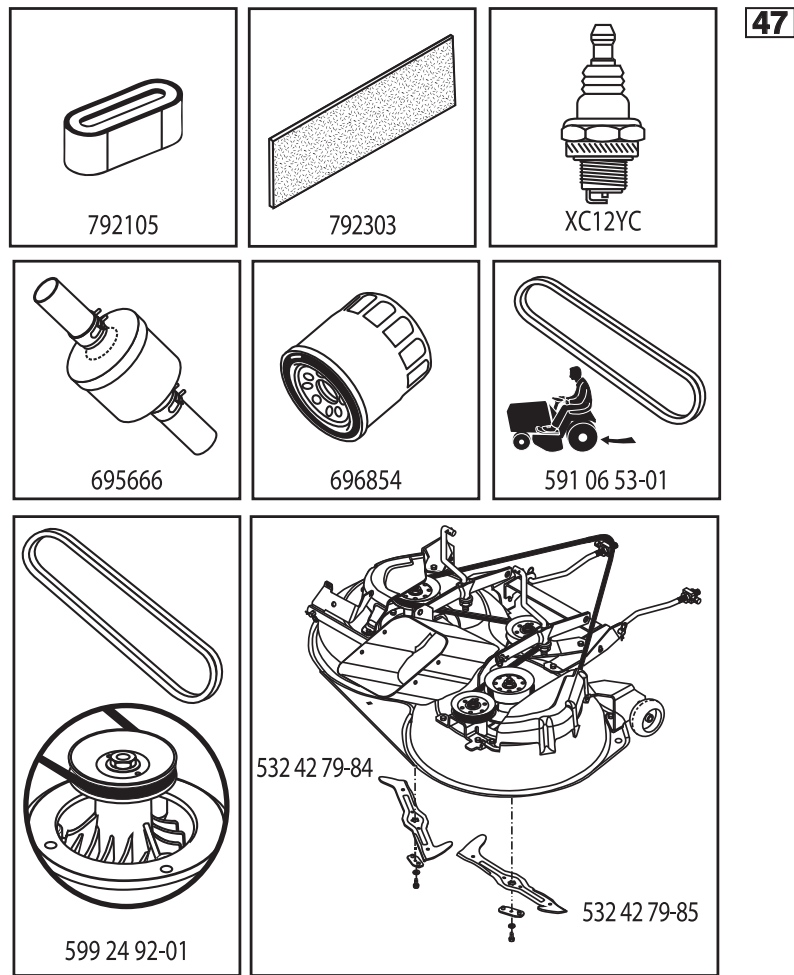


ILLUSTRATED PARTS LIST

MFG. ID NO. 96051019200

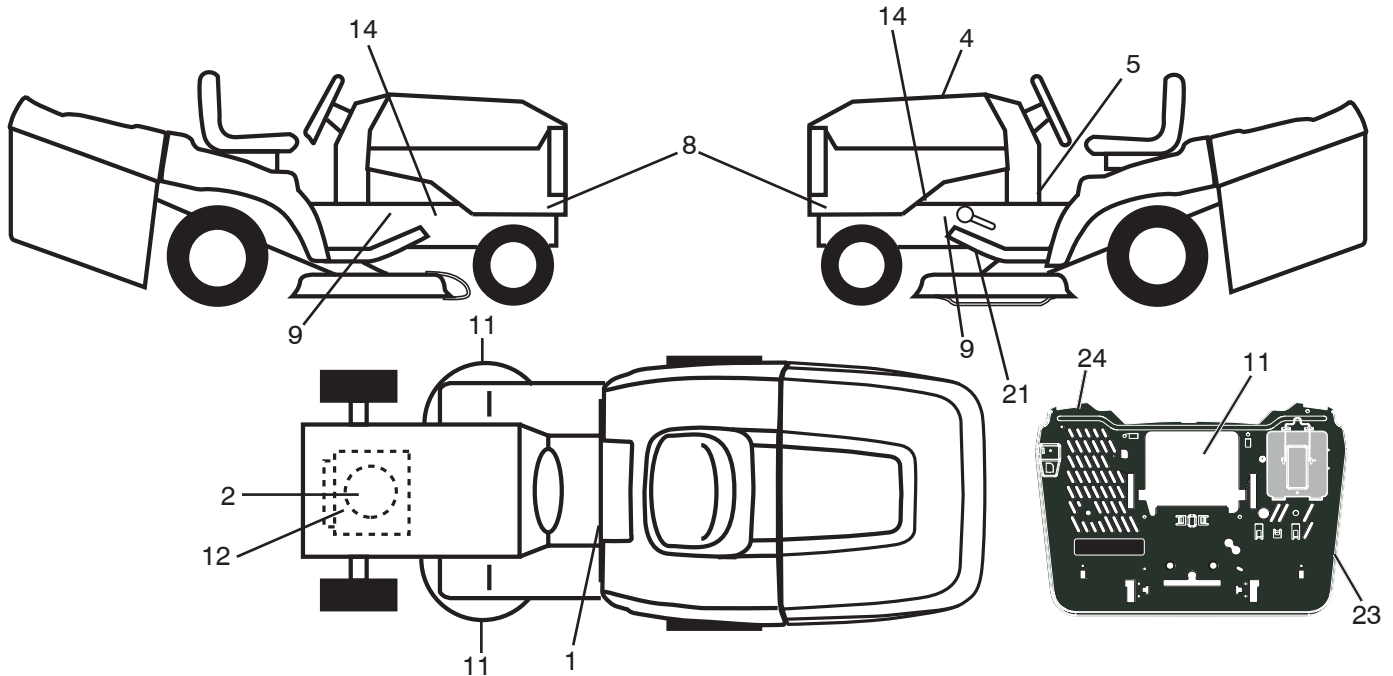
CUSTOMER CATALOG NO. TC 238TX

PRODUCT NO. 960 51 01-92



596396001

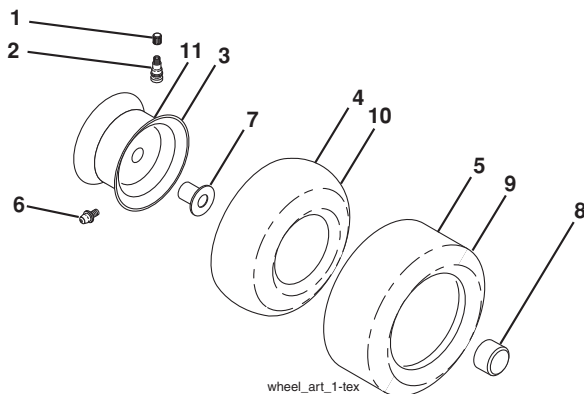
**TRACTOR - - MODEL NO. TC 238TX (96051019200), PRODUCT NO. 960 51 01-92
DECALS 27**



KEY NO.	PART NO.	DESCRIPTION
1	581 57 83-01	Decal, Warning
2	581 57 97-01	Decal, Warning Eng. Sym.
4	596 39 60-01	Decal, Replacement
5	581 57 84-01	Decal, Lower Dash
8	598 02 29-01	Decal, Side Panel
9	581 57 98-01	Decal, Warning
11	581 57 91-01	Decal, Mower Cut Finger Symbol
12	587 46 91-01	Decal, Engine B&S
14	581 57 96-01	Decal, Chassis Hot Muffler
21	592 98 02-01	Decal, Belt Schematic

KEY NO.	PART NO.	DESCRIPTION
23	532 44 46-19	Decal, Bypass
24	532 44 54-93	Decal, Warning Combined
--	532 44 14-09	Pad Footrest LH
--	532 44 14-10	Pad Footrest RH
--	114 20 58-20	Manual Operator's (Euro)
--	114 20 59-10	Manual Operator's (Scan)
--	114 20 60-50	Manual Operator's (EBloc)
--	114 20 61-40	Manual Operator's (Baltic)
--	114 20 62-76	Manual Operator's (Turkish)
--	114 20 63-53	Manual Operator's (Ukrainian)

WHEELS AND TIRES



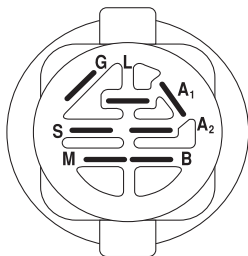
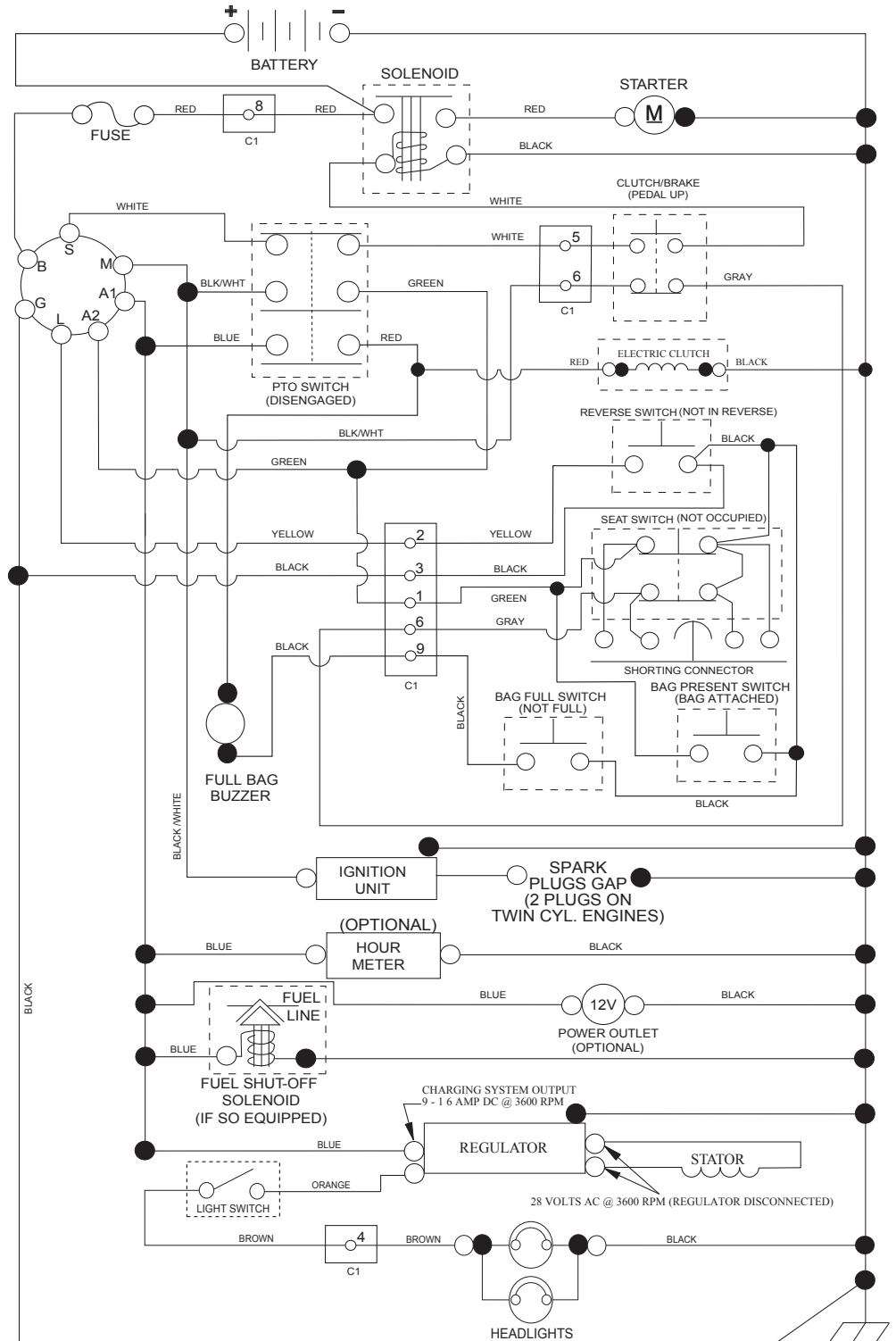
KEY NO.	PART NO.	DESCRIPTION
1	532 05 91-92	Cap Valve Tire
2	532 06 51-39	Stem Valve
3	532 13 83-36	Rim Front
4	532 05 99-04	Tube Front (Service Item Only)
5	532 17 04-55	Tire Front 15 x 6-6
6	532 00 02-78	Fitting Grease (Front Wheel Only)
7	532 00 90-40	Bearing Flange (Front Wheel Only)
8	532 17 50-39	Cap Axle Blk 1 50 x 1 00
9	588 69 19-01	Tire R 18 x 9.5-8
10	532 00 71-52	Tube Rear (Service Item Only)
11	532 13 83-37	Rim Asm 8" Rear
--	532 14 43-34	Sealant, Tire (10 oz. Tube)

NOTE: All component dimensions given in U.S. inches
1 inch = 25.4 mm

TRACTOR - - MODEL NO. TC 238TX (96051019200), PRODUCT NO. 960 51 01-92

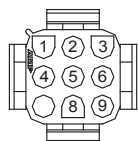
SCHEMATIC **38**

SCH19

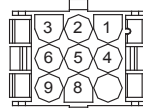


IGNITION SWITCH

POSITION	CIRCUIT "MAKE"
OFF	M+G+A1
RUN/OVERRIDE	B+A1
RUN	B+A1 L+A2
START	B + S + A1



CHASSIS HARNESS CONNECTOR (C1) (MATING SIDE)



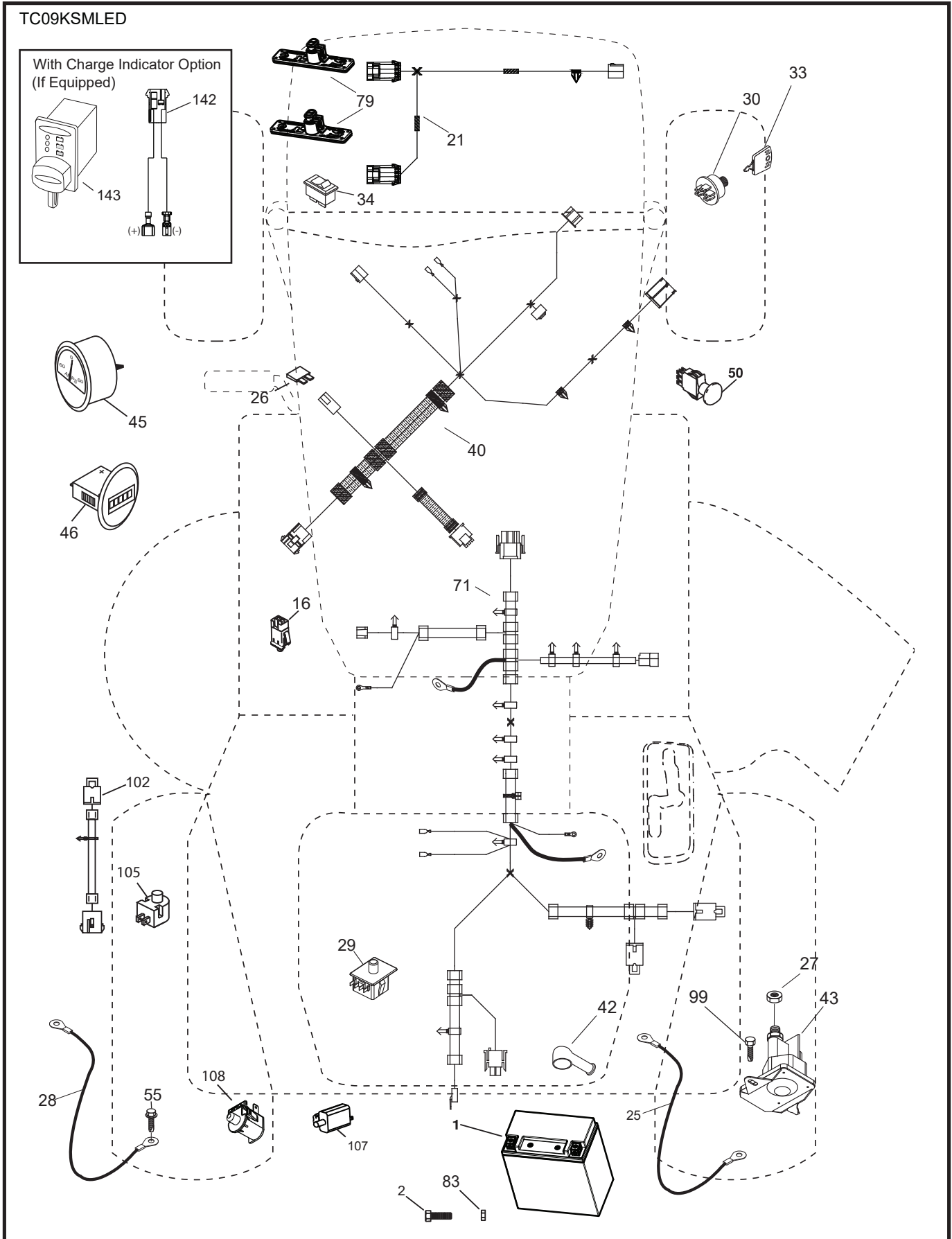
DASH HARNESS CONNECTOR (C1) (MATING SIDE)

WIRING INSULATED CLIPS
NOTE: IF WIRING INSULATED CLIPS WERE REMOVED FOR SERVICING OF UNIT, THEY SHOULD BE RE-INSTALLED TO PROPERLY SECURE YOUR WIRING.

● NON-REMOVABLE CONNECTIONS

○ REMOVABLE CONNECTIONS

TRACTOR - - MODEL NO. TC 238TX (96051019200), PRODUCT NO. 960 51 01-92
 ELECTRICAL **32**

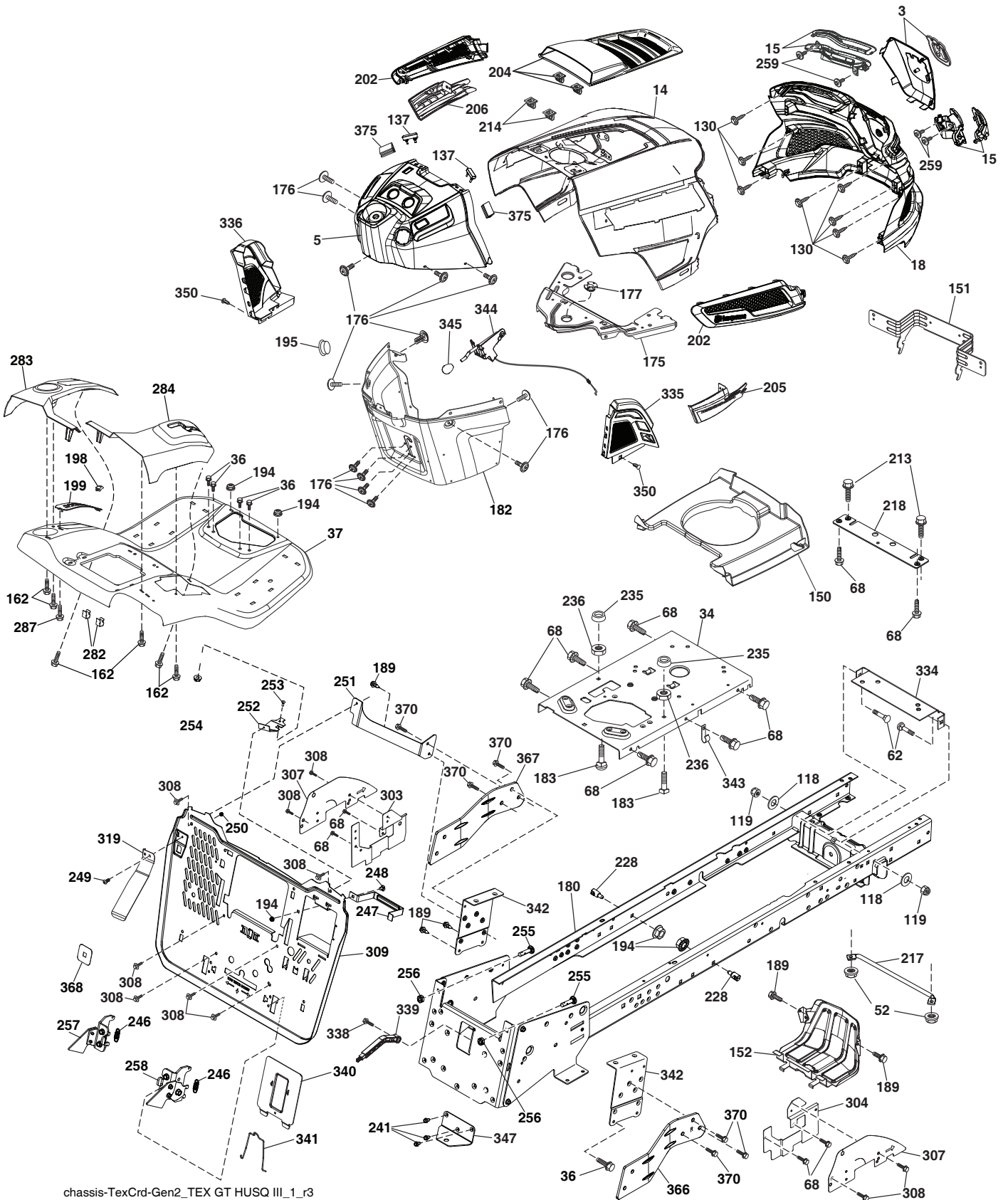


**TRACTOR - - MODEL NO. TC 238TX (96051019200), PRODUCT NO. 960 51 01-92
ELECTRICAL 32**

KEY NO.	PART NO.	DESCRIPTION
1	532 43 71-57	Battery
2	532 44 09-23	Screw Hex Hd Cap M6 x 1.12mm
16	532 17 61-38	Switch Interlock Push-In
21	585 43 64-02	Harness, LED Lights
25	589 32 37-01	Cable Batt 8 Ga. Red 9
26	532 17 51-58	Fuse
27	596 13 36-01	Locknut, KEPS, 1/4-20
28	589 32 36-01	Cable, Ground
29	532 19 27-49	Switch, Seat
30	532 19 33-50	Switch, Ign
33	532 41 19-35	Key/Chain Blister Pack
34	532 11 07-12	Switch Light Blk Red
40	587 30 48-01	Harness Dash
42	532 13 15-63	Cover Terminal Red
43	582 04 28-02	Solenoid w/Brass, Plunger, AN
45	587 55 39-03	Gauge, Ammeter, Round
46	587 55 40-03	Hourmeter, Service
50	582 10 76-01	Switch PTO
55	817 06 05-12	Screw Thdrol 5/16-18 x 3/4 TYTT
71	587 26 87-01	Harness Ignition Chassis
79	597 52 30-01	Light, Hus GT 3, LED, Bar
83	594 08 65-01	Nut, Square, M6 x 1
99	817 00 05-12	Screw Thdrol 5/16-18 x 3/4
102	532 44 12-62	Harness Jumper
105	532 40 75-68	Switch Reverse
107	532 18 03-79	Switch Full Bagger
108	589 50 03-01	Switch Snapmount

NOTE: All component dimensions given in U.S. inches
1 inch = 25.4 mm

TRACTOR - - MODEL NO. TC 238TX (96051019200), PRODUCT NO. 960 51 01-92
CHASSIS AND ENCLOSURES **39**



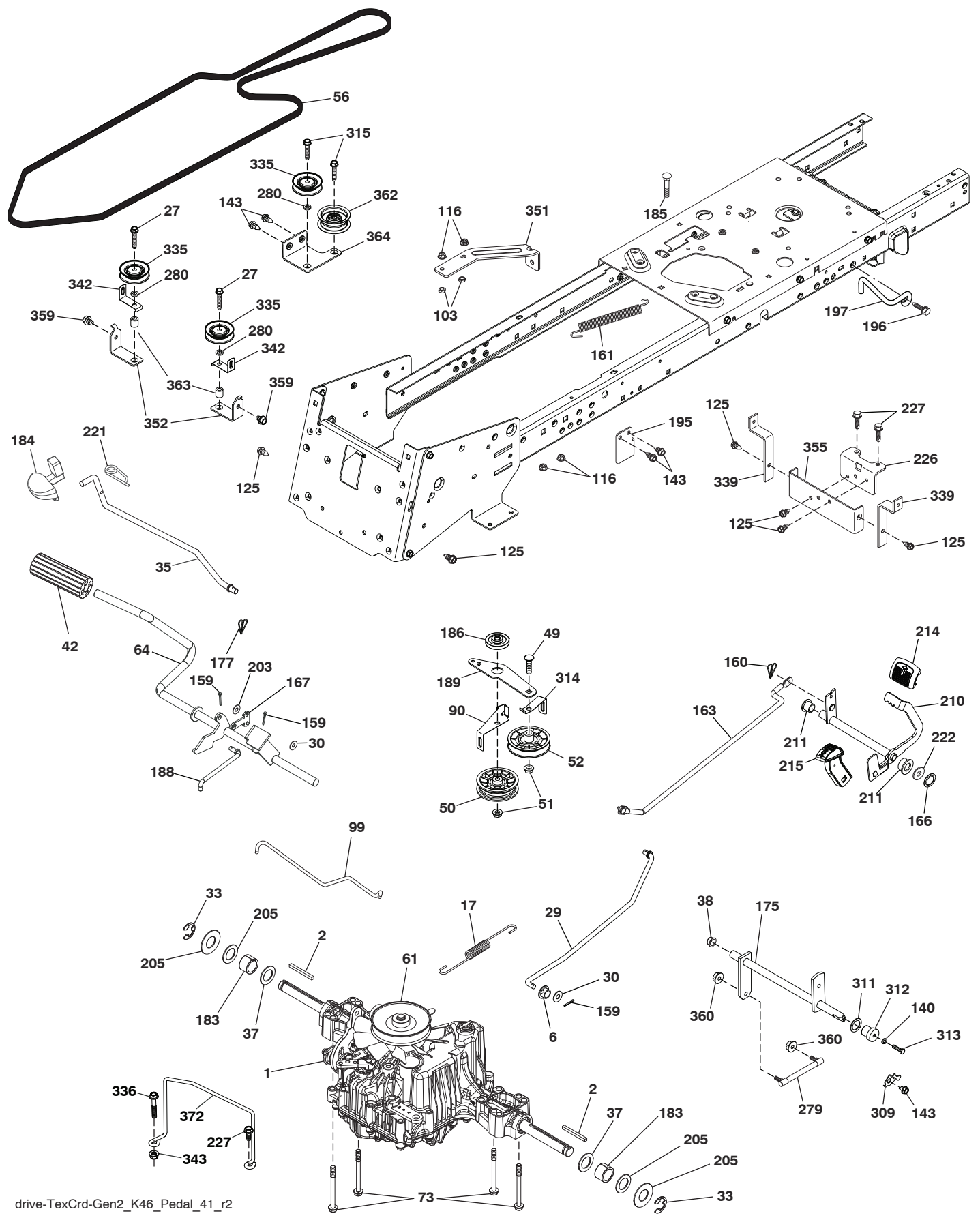
chassis-TexCrd-Gen2_TEX GT HUSQ III_1_r3

**TRACTOR - - MODEL NO. TC 238TX (96051019200), PRODUCT NO. 960 51 01-92
CHASSIS AND ENCLOSURES 39**

KEY NO.	PART NO.	DESCRIPTION	KEY NO.	PART NO.	DESCRIPTION
3	597 68 82-01	Kit, Grille Applique, (includes applique cover and emblem badge)	246	591 44 90-01	Bagger Latch Extension Spring
5	590 74 88-20	Dash	247	582 55 26-02	Battery Strap
14	532 44 11-77	Hood	248	872 11 05-04	Bolt Rdhd Sqnk 5/16-18 x 1/2 Gr. 5
15	597 86 79-01	Kit, SVC, Hus GT3, LED Headlights (includes LH/RH lens and LH/RH housing)	249	586 93 60-01	Screw Bnhd 10-24 x 1/2 Patched
18	597 40 71-02	Grille	250	596 04 08-01	Lock, Nut Washer #10-24 in, Gr.2
34	580 91 09-01	Plate Engine	251	589 31 89-04	LH Backplate Support Bracket
36	817 06 05-12	Screw 5/16-18 x 3/4	252	581 99 22-04	RH Backplate Support Bracket
37	532 44 13-69	Fender	253	596 23 84-01	1/4-20 x 3/4 in, Gr. 5, Bolt
52	596 04 05-01	Nut, Lock, Hex, PRVL, 5/16-18	254	873 90 04-00	Nut Lock Hex Flange 1/4-20
62	596 72 82-01	Bolt, Carri, 3/8-16 x 1" Gr. 5	255	589 39 22-03	Bolt Cross Drilled 3/8-16 x 1.75
68	596 03 07-01	Screw, Hexagon 5/16-18 x 1/2	256	532 19 70-33	Nut Jam 3/8-16
118	596 56 53-01	Washer, 3/8 x 0.08 in, ST, CLR, Zinc	257	589 74 66-02	Bagger Latch Assembly LH
119	596 32 26-01	Nut, Crownlock, 3/80, 16, unc	258	589 74 67-02	Bagger Latch Assembly RH
130	596 32 17-01	Screw #10 x 0.750	259	596 43 40-01	Screw #10.10 x 0.500, Bos Thread
137	532 40 75-90	Bumper Dash	282	532 41 41-10	Clip Retainer
150	532 43 97-74	Air Duct	283	532 44 72-12	Console Deck Lift LH
151	532 43 66-70	Bracket Pivot	284	532 44 72-20	Console Shft RH
152	532 43 98-70	Shield Browning	287	817 60 04-06	Screw 1/4-20 x 3/8
162	596 13 41-01	Screw, Hex, Tap, 1/4-15 x 1/2	303	589 00 76-02	Shield Chassis French LH
175	590 60 77-02	Crossmember	304	589 00 68-02	Shield Chassis French RH
176	532 40 07-76	Screw 10-24 x 5/8	307	587 49 45-01	Shield Upper French
177	532 19 52-28	Bushing Steering	308	532 17 18-77	Bolt 5/16-18 unc x 3/4 w/Sems
180	593 89 88-01	Chassis	309	582 55 25-02	Backplate
182	586 73 87-02	Dash Lower	319	581 31 39-07	Lever Bag
183	595 30 57-01	Screw, Hexagon, 5/16-18 x 1-1/4	334	532 44 25-37	Bracket Engine
189	817 00 05-12	Screw 5/16-18 x 3/4	335	532 44 82-04	Cover RH Lower Close Out
194	596 13 57-01	Nut, Lock, Prvl, Torq, 5/16-18 x .68	336	532 44 53-09	Cover LH Lower Close Out
195	532 40 41-37	Plug Hole Dash Lower	338	594 09 39-01	Bolt Shoulder 5/16-18 x .88
198	532 44 15-52	Indicator Deck Lift	339	532 43 66-41	Lever Bagger Full
199	532 41 87-39	Plate Deck Lift	340	582 55 27-02	Battery Door
202	597 86 77-01	Kit, Side Vents, LH/RH (includes LH/RH side vents)	341	582 06 08-01	Battery Door Latch
204	597 40 80-01	Kit, Top Vent (includes top vent and clip retainers)	342	582 82 68-02	Supprt Fender
205	532 43 97-30	Skirt Hood Side RH	343	532 44 07-49	Clip
206	532 43 97-29	Skirt Hood Side LH	344	532 43 89-70	Control EZ Mulch
213	596 03 05-01	Bolt, Hex HD, 5/16-18 unc x 3/4	345	532 44 06-39	Knob
214	532 19 91-45	Clip Retainer	347	532 44 28-87	Hitch Tow
217	532 40 91-67	Rod Pivot	350	532 44 51-43	Clip X-Mas Tree
218	532 19 63-95	X-Piece Hood Stop	366	581 31 46-02	Bracket RH Front Bagger
228	593 82 40-01	Stud, w/"D" Anti-Rotation	367	581 31 45-02	Bracket LH Front Bagger
235	596 56 42-01	Spacer, Fender, CLR, Zn	368	581 42 48-01	Full Lever Shroud
236	873 93 05-00	Nut Lock 5/16-18 unc	370	817 12 06-16	Screw, 3/8-16 x 1, Smgml, T
241	593 33 76-01	Screw 5/16-18 x 1.00 HWH, TRS	375	586 90 82-01	Dash Clip-On Bumper
			- -	597 33 48-01	Bumper, Trctr, 1Tube, Std, Blk

NOTE: All component dimensions given in U.S. inches
1 inch = 25.4 mm

TRACTOR - - MODEL NO. TC 238TX (96051019200), PRODUCT NO. 960 51 01-92
DRIVE **40**

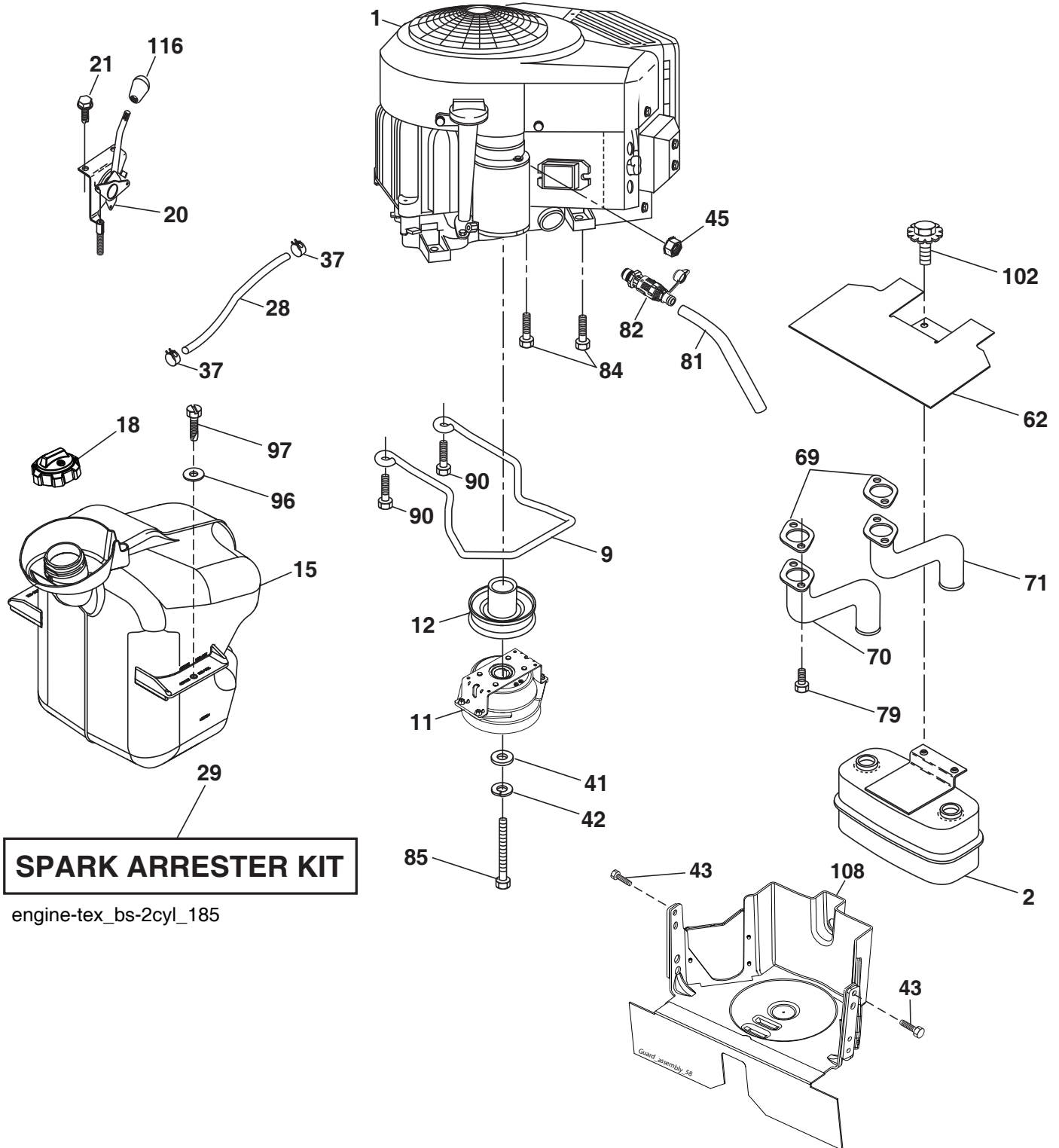


drive-TeXCrd-Gen2_K46_Pedal_41_r2

**TRACTOR - - MODEL NO. TC 238TX (96051019200), PRODUCT NO. 960 51 01-92
DRIVE **40****

KEY NO.	PART NO.	DESCRIPTION	KEY NO.	PART NO.	DESCRIPTION
1	---	Transaxle, Tufftorq K46DF (446488) (Order parts from trans-axle manufacturer.)	188	582 21 70-01	Link Clutch
2	532 12 35-83	Key Square	189	532 43 36-11	Bellcrank Ground Drive
6	532 12 40-28	Bushing Snap	195	580 45 69-01	Bracket Rod Brake CRD Tex
17	532 43 62-27	Spring Brake K46	196	817 00 06-16	Screw 3/8-16 x 1 Smgml Tap/R Blk
27	596 24 10-01	Screw, Hex, Threadroll, 5-16 x 18	197	585 65 86-02	Clutch, Antirotation, Wireform
29	532 44 27-95	Rod, Brake	203	596 20 41-01	Washer, 11/32 x 11/16 x 14
30	596 14 02-01	Washer 406 ID x OD x .065	205	532 12 17-48	Washer 25/32 x 1-5/8 x 16 Ga.
33	812 00 00-01	Ring E	210	532 40 09-80	Rocker Asm. Pedal Control
35	583 86 45-02	Rod, BRK, Parking, GT HUSQ	211	532 12 01-83	Bearing Nylon
37	532 18 89-67	Washer Harden .793 x 1.063 x .060	214	532 42 12-63	Pedal Forward
38	532 16 96-13	Nyliner Bushing	215	586 60 65-02	Pedal Reverse
42	532 00 88-83	Cover, Foot Pedal	221	532 40 31-87	Retainer Spring Clip Handle
49	596 13 62-01	Bolt, Cup Head, 3/8-16 x 3/4	222	879 21 20-10	Washer 21/32 x 1-1/4 10 Ga.
50	532 19 43-27	Idler Flat	226	532 40 15-64	Bracket Strap Torque
51	873 90 06-00	Lock Nut 3/8-16	227	596 13 59-01	Bolt, Hex, 5/16-18 x 3/4, CLR, Zinc
52	532 19 43-26	Idler V-Groove	279	593 89 84-01	Link & Stud-Link, SUBASM
56	591 06 53-01	V-Belt, Drive	280	596 03 99-01	Washer, Plain, 11/32 x 5/8, CLR
61	532 44 51-51	Pulley Transaxle K46	309	532 16 55-81	Plate Fstnr Cross Shf
64	532 19 78-65	Shaft Asm. Pedal Brake Control	311	532 16 98-45	Washer Nylon
73	595 31 66-01	Bolt HDD w/Flange 5/16-18 Gr.5	312	532 16 56-14	Hub Tapered
90	532 44 36-05	Keeper Belt Clutching	313	596 04 07-01	Bolt, Hex, 1/4-20 x 1
99	532 44 39-47	Rod Spring Bypass	314	532 44 47-13	Keeper Belt
103	596 43 63-01	Nut, Hex, 5/16-18 x 0.577" Gr.5 Zn	315	817 58 05-20	Screw Thdrol 5/16-18 x 4.25
116	596 13 57-01	Nut, Lock, PRVL, Torq, 5/16-18 x .68	335	532 19 95-34	Pulley V-Idler
125	817 00 05-12	Screw 5/16-18 x 3/4	336	587 25 96-02	Bolt, 5/16-18 x 1-3/4, Flanged
140	596 02 98-01	Spring, Lock Washer, Square Ends	339	532 43 68-67	Strap Torque K46 CRD Tex
143	596 03 07-01	Screw, Hexagon, 5/16-18 x 1/2	342	532 18 26-82	Keeper Belt 2.5" STL V-Idlr CRD
159	596 02 95-01	Pin, Cotter, 1/8 dia x 3/4	343	594 94 44-01	Nut, Hexagon, Flange, 5/16-18
160	596 02 94-01	Clip, Retainer "M"	351	532 43 69-98	Bracket 97 CRD Deck Sway
161	532 10 57-09	Spring, Return, Clutch	352	532 43 56-45	Bracket Idler CRD Tex
163	594 08 41-02	Rod, Cntrl, Shift, Pedal	355	532 43 56-69	Strap Torque
166	532 42 91-64	Nut Push	359	596 56 40-02	Bolt, HDD, 3/8-16 x 0.655 CLR, ZN
167	532 40 52-57	Latch Brake Parking	360	532 44 47-14	Nut 5/16-24 unf
175	532 42 93-59	Shaft Asm Crossshift Rear CRD	362	532 43 68-12	Idler Flat
177	587 22 53-01	Pin Cotter, Locking, Bowtie, 1 in.	363	532 44 27-80	Spacer .343 x .63 x .62
183	532 13 70-57	Spacer Axle	364	532 44 30-32	Bracket Idler CRD Tex
184	587 65 37-01	Handle Parking Brake	372	582 65 49-01	Keeper Belt Transaxle
185	872 11 06-22	Bolt 3/8-16 unc x 2-3/4 Gr. 5			
186	532 19 43-21	Spacer Retainer			

NOTE: All component dimensions given in U.S. inches
1 inch = 25.4 mm



SPARK ARRESTER KIT

engine-tex_bs-2cyl_185

**TRACTOR - - MODEL NO. TC 238TX (96051019200), PRODUCT NO. 960 51 01-92
ENGINE 24**

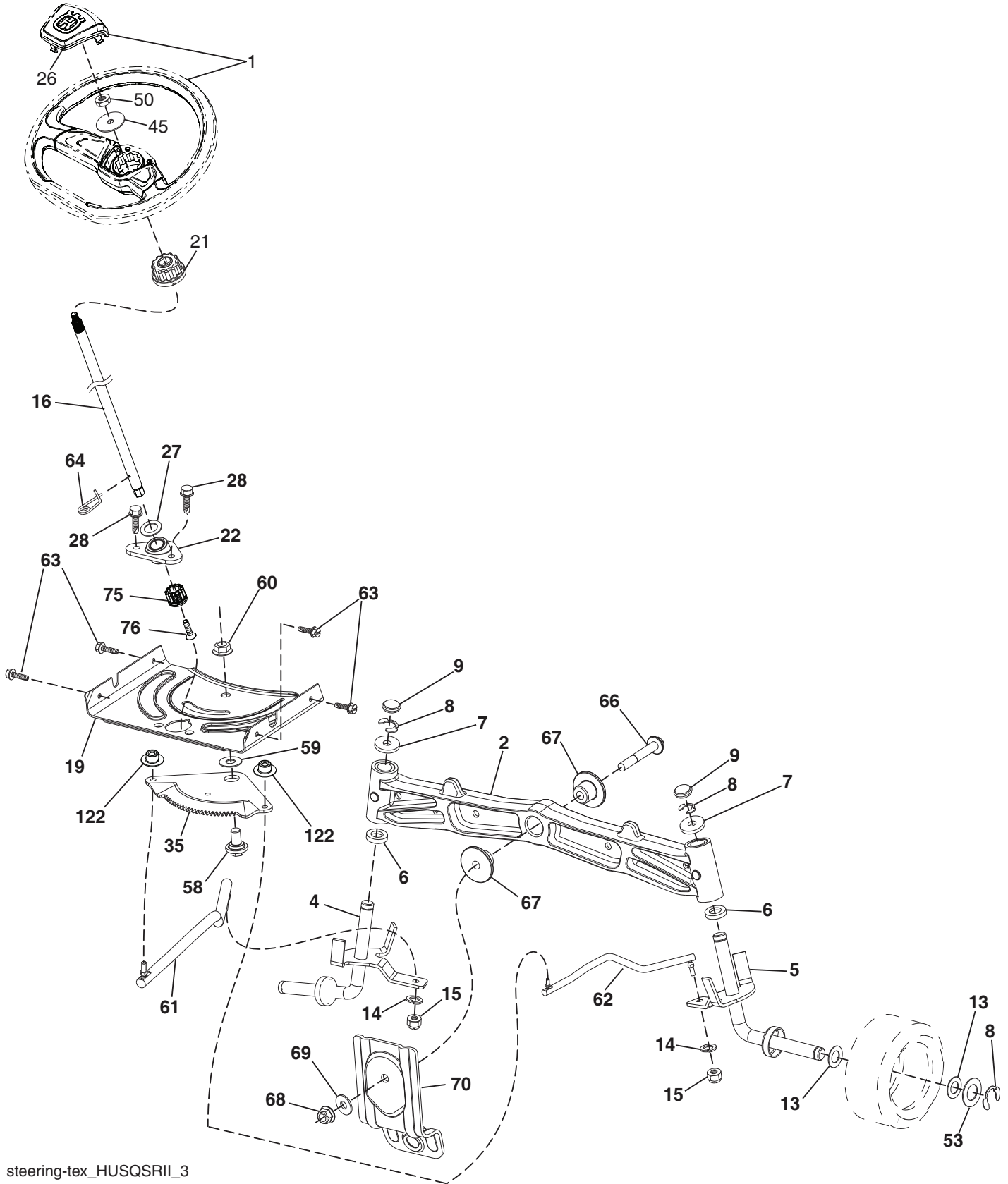
KEY NO.	PART NO.	DESCRIPTION
1	- - - - -	Engine B&S Model No. 40U777-0006-B5 (597360001) (Order parts from engine manufacturer.)
2	589 81 87-01	Muffler
9	501 83 26-02	Keeper Belt Engine
11	592 82 17-01	Clutch Electric
12	532 40 50-97	Pulley Engine
15	532 43 58-16	Tank Fuel
18	532 43 02-20	Fuel Cap
20	587 24 27-01	Control Throttle
21	596 32 17-01	Screw #10 x .075, BOS, Thread
28	532 13 70-40	Fuel Line
29	532 13 71-80	Spark Arrester Kit
37	532 12 34-87	Clamp Hose
41	532 12 61-97	Washer 1-1/2 OD x 15/32 ID x .250
42	596 23 89-01	Washer, 7/16 in, CLR, ZN
43	593 33 76-01	Screw, 5/16-18 x 1.00, HWH, TRS
45	596 13 36-01	Locknut, KEPS, 1/4-20
62	532 43 40-17	Shield Heat Muffler
69	532 16 53-91	Gasket
70	581 88 11-01	Tube Exhaust LH
71	581 88 10-01	Tube Exhaust RH
79	596 13 42-02	Screw, Socket, 5/16-18 x 1, CLR, Zn
81	532 14 84-56	Tube Drain Oil Easy
82	532 42 82-87	Valve Oil Drain
84	817 06 06-20	Screw
85	501 60 66-01	Bolt Hex 7/16-20 x 3.75 Gr. 5
90	817 00 06-16	Screw 3/8-16 x 1
96	596 13 53-01	Washer, Plain, 9/32 x 7/8, CLR, ZN
97	817 67 04-12	Screw 1/4-20 x 3/4
102	817 00 05-12	Screw 5/16-18 x 3/4
108	587 17 95-10	Cover Pulley Eng. w/SHLD
116	539 13 26-24	Knob-Shift

NOTE: All component dimensions given in U.S. inches
1 inch = 25.4 mm

Engine Power Rating Information

The gross power rating for individual gas engine models is labeled in accordance with SAE (Society of Automotive Engineers) code J1940 (Small Engine Power & Torque Rating Procedure), and rating performance has been obtained and corrected in accordance with SAE J1995 (Revision 2002-05). Torque values are derived at 3060 RPM; horsepower values are derived at 3600 RPM. Actual gross engine power will be lower and is affected by, among other things, ambient operating conditions and engine-to-engine variability. Given both the wide array of products on which engines are placed and the variety of environmental issues applicable to operating the equipment, the gas engine will not develop the rated gross power when used in a given piece of power equipment (actual "on-site" or net power). This difference is due to a variety of factors including, but not limited to, accessories (air cleaner, exhaust, charging, cooling, carburetor, fuel pump, etc.), application limitations, ambient operating conditions (temperature, humidity, altitude), and engine-to-engine variability. Due to manufacturing and capacity limitations, Briggs & Stratton may substitute an engine of higher rated power for this Series engine.

TRACTOR - - MODEL NO. TC 238TX (96051019200), PRODUCT NO. 960 51 01-92
STEERING ASSEMBLY 41



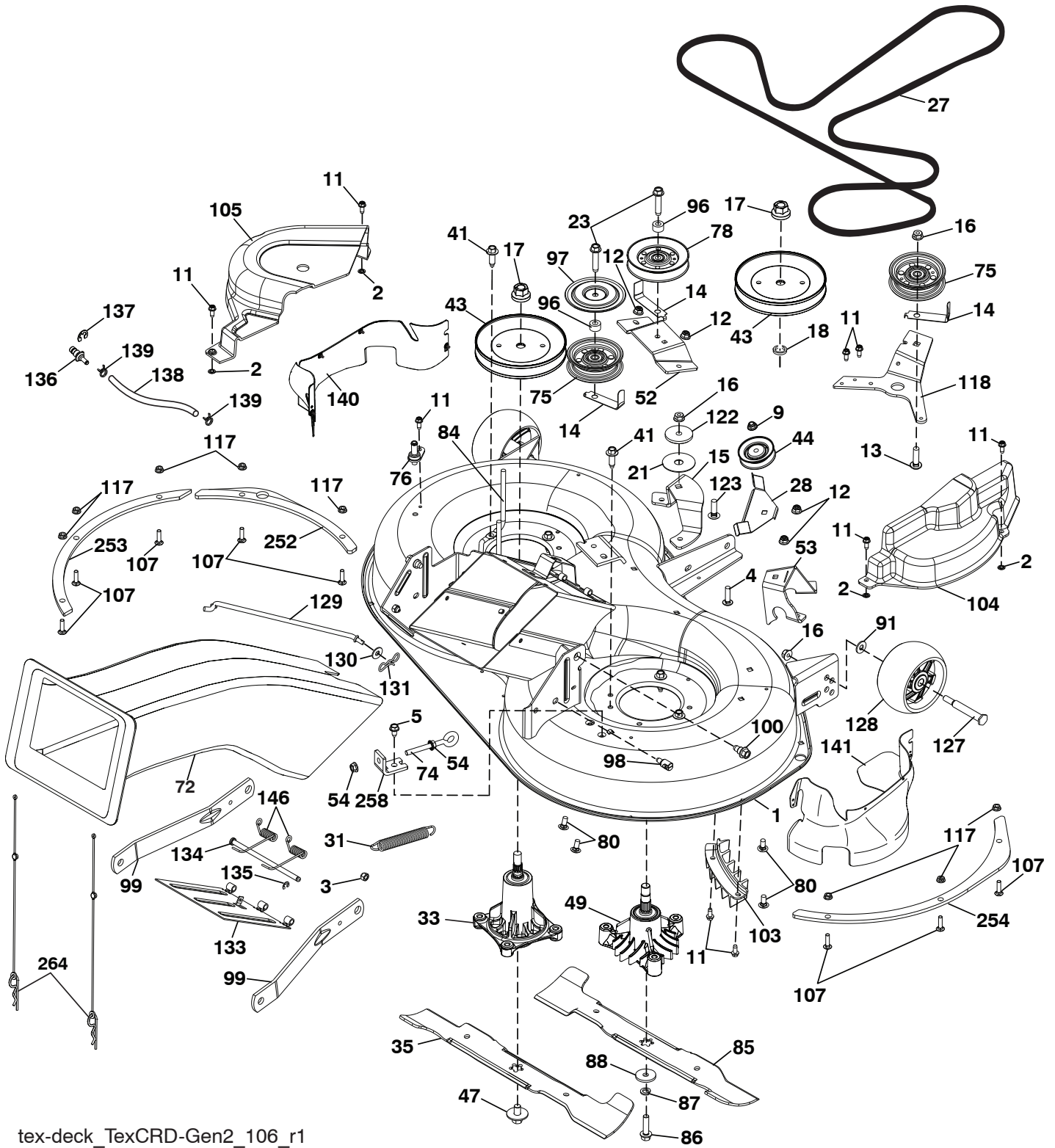
steering-tex_HUSQSR11_3

TRACTOR - - MODEL NO. TC 238TX (96051019200), PRODUCT NO. 960 51 01-92
STEERING ASSEMBLY 41

KEY NO.	PART NO.	DESCRIPTION
1	597 86 61-01	Wheel, Steering, Kit (includes steering wheel and cap)
2	532 19 59-68	Axle Cast Iron
4	532 40 30-87	Spindle Asm., LH
5	532 40 30-88	Spindle Asm., RH
6	532 00 62-66	Washer Thrust 0.75 x 1.23
7	532 12 17-48	Washer 25/32 x 1-5/8 x 16 Ga.
8	812 00 00-29	Ring, Klip #T5304-75
9	532 12 12-32	Cap, Spindle
13	532 12 17-49	Washer 25/32 x 1-1/4 x 16 Ga.
14	596 23 87-01	Washer, Spring Lock, 381ID x .680
15	873 54 06-00	Nut, Crown Lock 3/8-24 unf
16	587 01 60-02	Shaft Steering
19	532 19 47-29	Plate Steering
21	586 84 02-01	Adapter, Wheel Steering Splnd Alum
22	585 02 98-02	Bearing Shaft Steer Low
26	594 94 91-01	Cap, Wheel Steering
27	596 93 34-01	Washer, Plain
28	817 00 06-12	Screw 3/8-16 x 3/4
35	532 19 47-32	Gear, Sector Plate
45	587 01 64-01	Washer 3/8 ID 2-3/8 OD 12 Ga. PLTD
50	873 90 06-00	Nut Lock Flg. 3/8-16 unc
53	532 18 89-67	Washer Hardened .793 x 1.637 x .060
58	532 19 47-47	Bolt Shoulder Sector Pivot CFM
59	532 19 47-48	Washer Thrust Sector Steering
60	873 97 10-00	Nut Flange Lock 5/8-11
61	597 07 02-02	Linkage, Draglink, ADJ, LH, CLR, ZN
62	597 07 03-02	Linkage, Draglink, RH, STNDRD, CLR
63	817 00 05-12	Screw 5/16-18 x 3/4
64	532 19 98-49	Retainer Clip Spring Steering
66	871 02 07-48	Bolt Hex Fghd 7/16-14 x 3 Serr
67	532 19 47-37	Bushing PM Front Axle
68	873 90 07-00	Nut Lock Flange 7/16-14 Gr. 5
69	532 19 91-62	Washer 1.5 x .505 x .118
70	585 33 88-01	Bracket Deck Susp. Front
75	580 68 37-01	Pinion
76	580 68 36-01	Screw Head Sock
122	532 44 49-62	Cap Gear

NOTE: All component dimensions given in U.S. inches
1 inch = 25.4 mm

TRACTOR - - MODEL NO. TC 238TX (96051019200), PRODUCT NO. 960 51 01-92
MOWER DECK 44



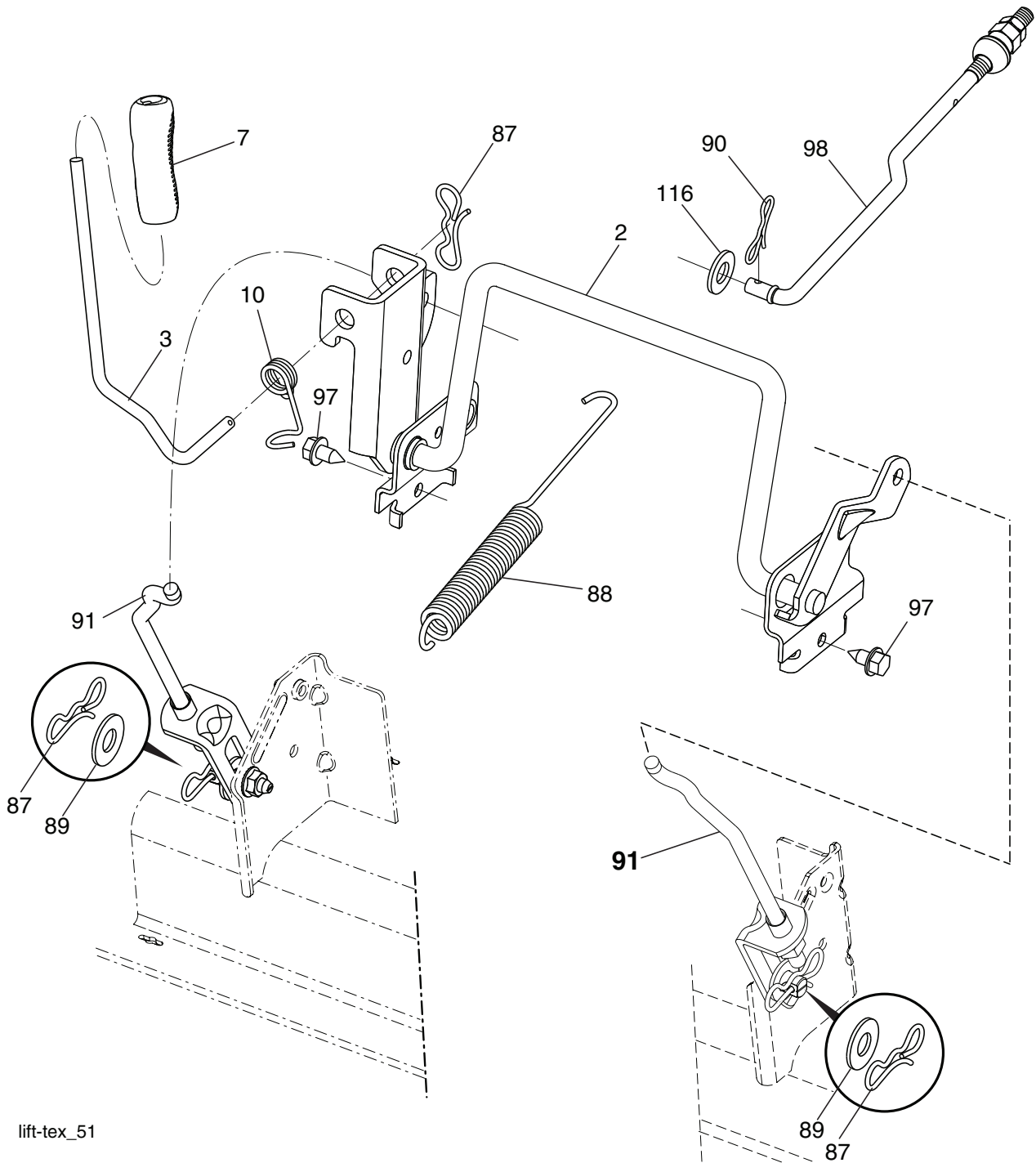
tex-deck_TexCRD-Gen2_106_r1

**TRACTOR - - MODEL NO. TC 238TX (96051019200), PRODUCT NO. 960 51 01-92
MOWER DECK 44**

KEY NO.	PART NO.	DESCRIPTION	KEY NO.	PART NO.	DESCRIPTION
1	597 00 08-01	SVC, Deck, Weldment	97	532 18 20-61	Shield Idler Mower
2	532 42 30-62	Palnut 1/4	98	593 82 40-01	Stud w/"D" Anti-Rotation
3	596 13 57-01	Nut 5/16-18	99	532 19 51-86	Arm Suspension
4	872 11 05-10	Bolt Carr. 5/16-18 x 1-1/4 Gr.5	100	532 19 65-39	Bolt Shoulder
5	817 00 05-10	Bolt 5/16-18	103	532 43 69-92	Guard Front Vent
9	585 69 13-01	Nut Hex Flg Nylock	104	592 84 81-01	Mandrel Cover RH
11	532 13 77-29	Screw 1/4-20 x 5/8	105	532 43 87-44	Mandrel Cover LH
12	594 94 44-01	Nut, Hexagon, Flange, 5/16-18	107	592 80 78-01	Bolt 1/4-20 x 3/4
13	596 13 61-01	Bolt, Cup Head, 3/8-16 x 1-1/2"	117	873 90 04-00	Nut 1/4-20
14	532 15 60-85	Keeper Belt Idler	118	592 85 48-02	Arm Clutching
15	592 85 47-02	Crd Idler Arm Mount Bracket	122	532 16 57-23	Retainer Spacer
16	873 90 06-00	Nut 3/8-16	123	596 98 75-01	Bolt, 3/8 x 1-1/4" Gr. 5, CLR, ZN
17	596 13 48-01	Nut, Hex 9/16-18 x 1.01	127	596 43 44-04	Bolt, Shoulder, 3/8-16 x 3-5/8"
18	532 18 76-90	Washer Spacer Mandrel	128	589 52 73-01	Wheel Gauge Rally
21	532 17 85-15	Washer Flat Hardened	129	532 44 32-37	Rod Anti Sway
23	596 56 40-03	Bolt, Hex, 3/8-16 x 1.78, CLR, Zinc	130	596 13 32-01	Washer, 13/32 x 13/16 x 12 Ga.
27	592 86 91-01	Belt 97 Manual	131	532 19 42-08	Pin Cotter 5/16 Bow Tie Lock
28	592 85 56-02	Keeper 97 Crd Angled Idler	133	532 43 55-38	Door, Mulch
31	587 35 84-01	Spring Extn	134	593 88 95-01	Pin, Hinge
33	587 81 97-01	Kit, Mandrell, Non Grease, Tall (includes mandrel and bolts)	135	532 43 79-88	E-Ring 5/16
35	532 42 79-84	Blade	136	532 43 96-39	Washout Port Hookup
41	584 95 39-01	Bolt Hex Wshrhd 313-18 x 1.19	137	812 00 00-29	Ring Klip
43	532 19 97-89	Pulley Mandrel	138	532 44 07-43	Hose 3/8 Long 12"
44	532 19 95-34	Pulley V-Idler Grnd Dr Plated	139	532 44 07-42	Hose 3/8 Clamp
47	584 30 93-01	Screw LH Blade 7/16 x 1	140	501 57 94-01	Guard Asm LH
49	532 16 55-79	MandrelAsm, CRD, LH Threads, SVC (includes bearing, housing, shaft, felt washer, nut, bolt, and washers)	141	501 57 93-01	Guard Asm RH
52	595 09 80-03	Bracket V-Idler Bolt Center	146	532 44 58-96	Spring, Mulch
53	595 09 81-03	Bracket V-Idler Bolt Angled	252	585 30 87-05	Plate Reinforcement LHS
54	596 03 92-01	Nut, Lock, Hex, 5/16-18, Clear, Zinc	253	585 30 88-05	Plate Reinforcement LHS
72	581 45 41-03	Chute Upper	254	585 30 90-05	Plate Reinforcement LHS
74	596 24 08-01	Bolt, Eyelet, 5/16-18 x 3-1/2	258	592 85 60-01	Bracket Adj Tensioner
75	597 02 50-01	Pulley Idler Flat	264	589 39 29-02	Retainer Asm, Chute, CRD 2.5, TEX
76	532 43 96-40	Washout Port	- -	597 00 10-01	Replacement Mower Complete
78	532 17 39-02	Pulley Idler V-GR Plated 4.25			
80	595 90 16-01	Bolt, Cup, 5/16-18 x 3/4, CLR, ZNC			
84	532 40 01-40	Keeper Belt Mandrel			
85	532 42 79-85	Blade			
86	532 18 17-13	Bolt 3/8-24 x 1.50			
87	596 23 87-01	Washer, Spring, Lock, 381 ID x .680			
88	532 14 02-96	Washer Hard Blade			
91	596 13 49-01	Washer, Plain, 3/8 x 7/8			
96	532 40 02-71	Spacer			

NOTE: All component dimensions given in U.S. inches
1 inch = 25.4 mm

TRACTOR - - MODEL NO. TC 238TX (96051019200), PRODUCT NO. 960 51 01-92
MOWER LIFT 45



lift-tex_51

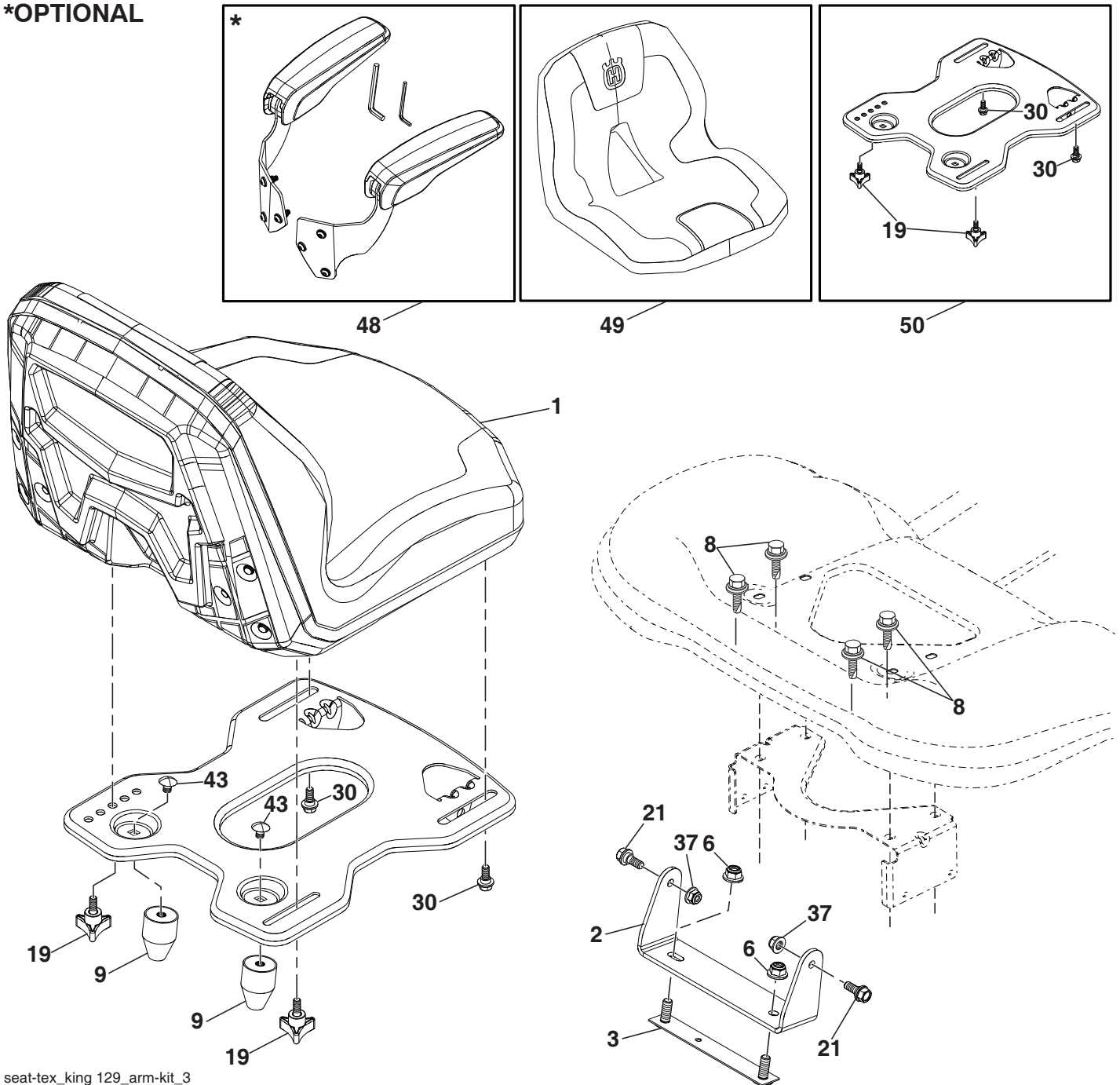
KEY NO.	PART NO.	DESCRIPTION
2	532 43 69-96	Deck Lift Weldment
3	594 01 80-01	Lever, Lift, Handle
7	580 96 23-01	Grip, Lever
10	532 19 63-14	Spring Torsion
87	532 19 42-09	Pin Cotter 7/16 Bow Tie Lock
88	532 44 54-96	Spring Lift Assist
89	819 19 19-12	Washer Clear Zinc
90	532 19 42-08	Pin Cotter 5/16 Bow Tie Lock

KEY NO.	PART NO.	DESCRIPTION
91	589 46 48-04	Link Assy, Lift, Rear
97	596 56 40-01	Hex, Bolt w/Collar, 3/8-16 x 0.53
98	581 50 69-06	Link Assy, Front, MWR, SUSP
116	594 97 65-01	Washer 15/32 x 15/16 x .065

NOTE: All component dimensions given in U.S. inches
 1 inch = 25.4 mm

**TRACTOR - - MODEL NO. TC 238TX (96051019200), PRODUCT NO. 960 51 01-92
SEAT ASSEMBLY 42**

***OPTIONAL**



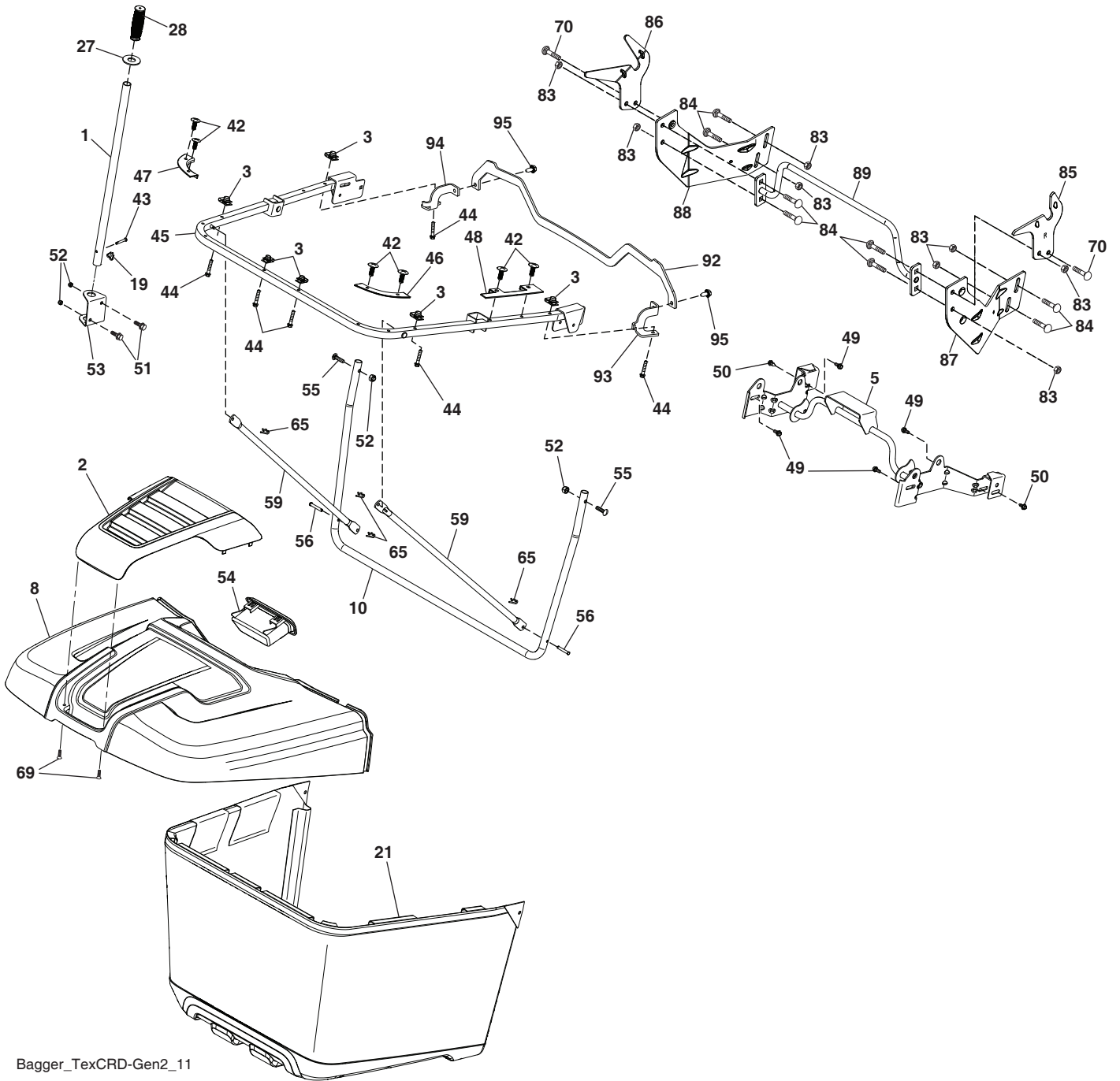
seat-tex_king 129_arm-kit_3

KEY NO.	PART NO.	DESCRIPTION
1	597 65 81-01	Seat, SK150/129 w/o Armrests (includes seat cover key# 49)
2	597 32 99-02	Bracket, PNT, PVT, FNDR, Seat EDIP
3	590 77 76-02	Bracket Asm, Reinfor FNDR, EDIP
6	521 99 65-02	Nut, Hex, Lock w/Flange 3/8-16
8	532 17 18-77	Bolt 5/16-18 unc x 3/4 w/Sems
9	597 78 51-01	Bumper, Rubber, Isolator
19	597 78 31-01	Knob, 3 Wing 5/16-18, CLR, ZN
21	596 24 07-01	Bolt, Hex 5/16-18 x 21/32

KEY NO.	PART NO.	DESCRIPTION
30	597 78-18-01	Bolt, Hex, Should 5/16-18 unc ZPB
37	594 94 44-01	Nut, Hexagon, Flange 5/16-18
43	597 86 93-01	Bolt, Carri, Cqur 3/8 x .45, CLR, ZN
48	597 65 82-03	Service Kit, 15", Seat Arm
49	597 95 94-01	Cover, Husq. 15", (SK129) Seat Service, Kit
50	598 00 16-01	Seat Pan (includes all components illustrated in box for Key# 50)

NOTE: All component dimensions given in U.S. inches
1 inch = 25.4 mm

TRACTOR - - MODEL NO. TC 238TX (96051019200), PRODUCT NO. 960 51 01-92
BAGGER **46**



Bagger_TexCRD-Gen2_11

**TRACTOR - - MODEL NO. TC 238TX (96051019200), PRODUCT NO. 960 51 01-92
BAGGER 46**

KEY NO.	PART NO.	DESCRIPTION
1	532 42 86-10	Tube Handle Bagger
2	532 44 75-72	Applique
3	532 17 48-14	Palnut 1/4 Lugs
5	532 44 37-62	Upper Pivot Tube
8	532 44 75-75	Bagger Top
10	532 44 37-55	Frame Front
19	532 19 42-08	Cotter Pin 5/16 Bow Tie
21	581 33 71-03	Bag Asm
27	532 44 55-29	Grommet Rubber
28	532 16 57-87	Grip Handle
42	532 44 04-28	Clip
43	532 12 68-75	Clevis Pin
44	532 19 96-87	Bolt 1/4-20
45	532 44 37-54	Upper Frame
46	532 44 55-41	Bag Corner Close Out RH
47	532 44 40-79	Bag Corner Close Out LH
48	532 44 40-80	Top Bagger Side Close Out
49	532 17 18-73	Bolt Shoulder 5/16-18
50	532 17 18-77	Bolt 5/16-18 x 3/4 w/SEMS
51	872 11 05-06	Bolt 5/16 x 18 x 3/4
52	596 58 37-02	Nut w/Nonmetal INS, BLK, ZINC
53	532 44 41-95	Bracket Dump Handle
54	532 44 72-18	Bagger Top Front Handle
55	596 03 08-01	Bolt 5/16-18 x 1/2 Gr. 5 CLR ZN
56	532 42 03-06	Pin Clevis .183 x 1.26
59	532 44 47-63	Bagger Sprd Tube
65	532 00 44-97	Retainer Spring
69	532 42 18-01	Screw #8 Flat Head Drill
70	817 00 06-12	Screw 3/8-16 x 3/4
83	873 80 06-00	Nut Lock Hex w/Ins. 3/8-16 unc
84	596 72 82-01	Bolt, Carri, 3/8-16 x 1" Gr. 5
85	581 31 44-02	Bracket RH Pivot
86	581 31 43-02	Bracket LH Pivot
87	581 31 48-02	Bracket RH
88	581 31 47-02	Bracket LH
89	581 31 51-04	Weldment Offset Strut
92	586 05 23-02	Bracket Top Support
93	586 05 24-02	Bracket Support RH
94	586 05 25-02	Bracket Support LH
95	817 00 05-12	Screw 5/16-18 x 3/4
--	501 70 56-01	Bagger Dump Kit (Includes Key#'s 85, 86, 87, 88, & 89)
--	586 74 49-01	Bagger Complete Kit (Includes Key#'s 1, 5, 10, 19, 21, 27, 28, 42, 43, 46, 47, 48, 49, 50, 52, 54, 56, 59, 65)

NOTE: All component dimensions given in U.S. inches
1 inch = 25.4 mm

