

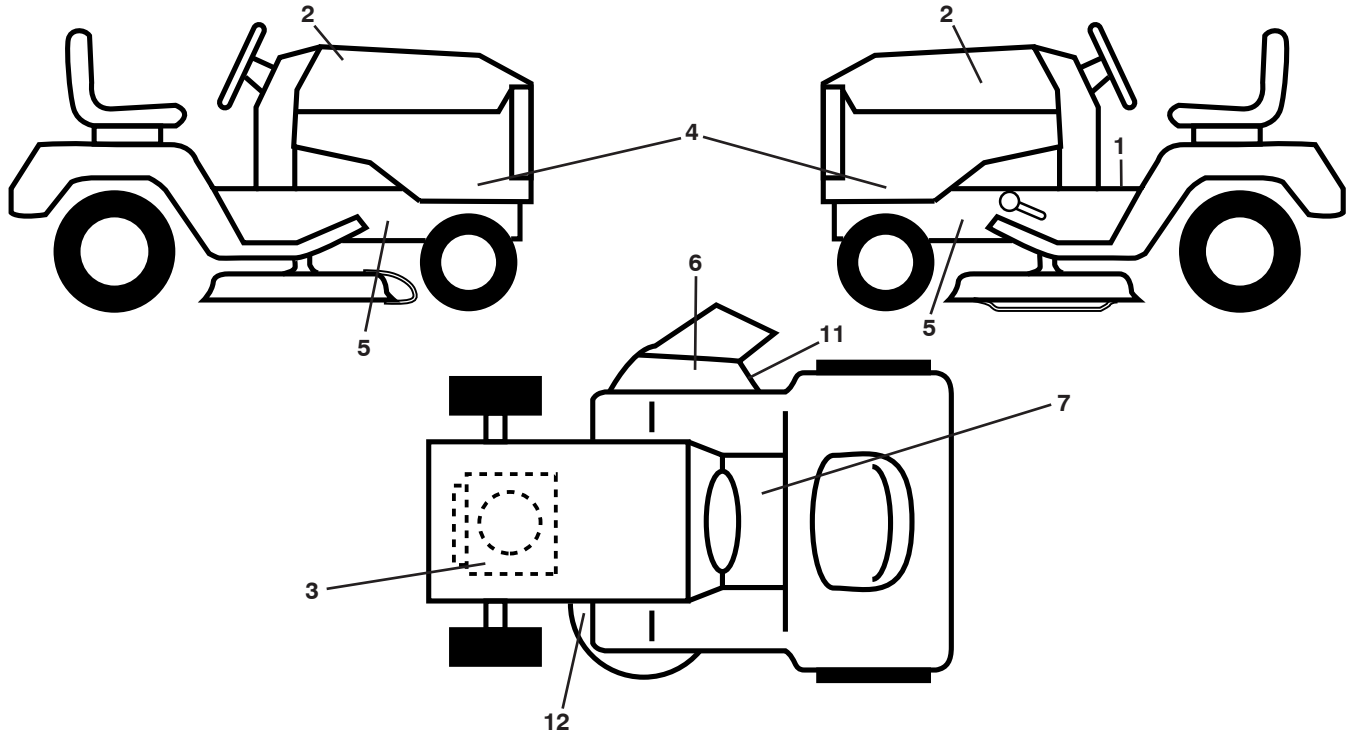
# **ILLUSTRATED PARTS LIST**

**MODEL NO. 96041041100**

**CUSTOMER CATALOG NO. LT1597**

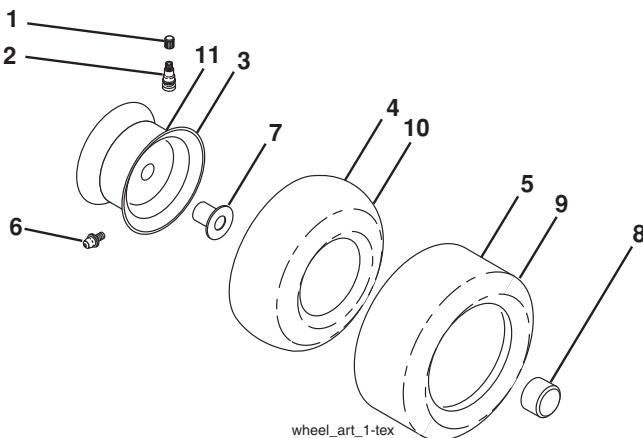
**PRODUCT NO. 904 10 41-11**

**TRACTOR - - MODEL NO. LT1597 (96041041100), PRODUCT NO. 960 41 04-11  
DECALS 27**



KEY NO.	PART NO.	DESCRIPTION	KEY NO.	PART NO.	DESCRIPTION
1	581 57 83-01	Decal, Operators	11	581 57 92-01	Decal, Warning
2	581 62 73-01	Decal, Hood	12	581 58 00-03	Decal, Mower V-Belt Schematic
3	581 57 97-01	Decal, Warning Eng. Symbols	--	532 43 96-81	Pad, Footrest, LH
4	532 44 82-46	Decal, Hood Panel	--	532 43 99-66	Pad, Footrest, RH
5	581 57 96-01	Decal, Chassis Hot Muffler	--	581 72 46-01	Decal, Drawbar Load Limit
6	584 90 46-01	Decal, Deck/Deflect. Warning	--	115 94 13-49	Manual Oper. English/Spanish
7	586 75 71-01	Decal, Consumpt.	--	115 94 14-59	Manual Oper. Portugués

**WHEELS AND TIRES**

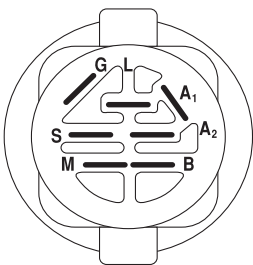
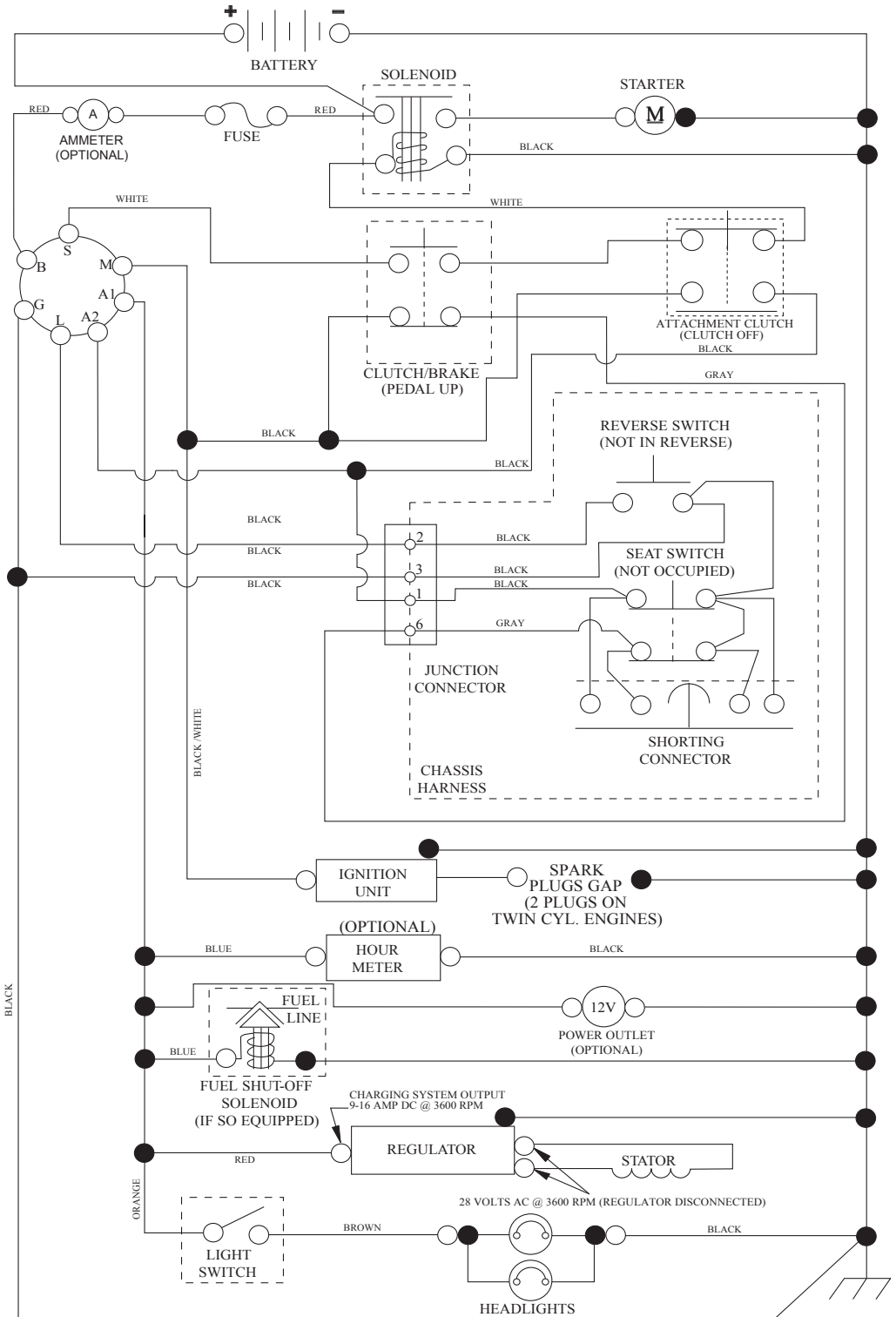


KEY NO.	PART NO.	DESCRIPTION
1	532 05 91-92	Cap Valve Tire
2	532 06 51-39	Stem Valve
3	532 13 83-36	Rim Asm 6" Front
4	532 05 99-04	Tube Front
5	532 10 62-22	Tire Front 15 x 6-6
6	532 00 02-78	Fitting Grease (Front Wheel Only)
7	532 00 90-40	Bearing Flange (Front Wheel Only)
8	532 17 50-39	Cap Axle Blk 1 50 x 1 00
9	532 42 05-31	Tire Rear 18 x 9.5-8
10	532 00 71-52	Tube Rear
11	532 13 83-37	Rim Asm 8" Rear
--	532 14 43-34	Sealant, Tire (10 oz. Tube)

**NOTE:** All component dimensions given in U.S. inches  
1 inch = 25.4 mm

# TRACTOR - - MODEL NO. LT1597 (96041041100), PRODUCT NO. 960 41 04-11 SCHEMATIC **38**

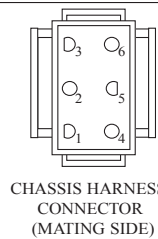
SCH10



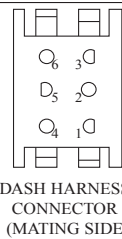
IGNITION SWITCH

POSITION	CIRCUIT	"MAKE"
OFF	M+G+A1	
RUN/OVERRIDE	B+A1	
RUN	B+A1	L+A2
START	B + S + A1	

03107



CHASSIS HARNESS CONNECTOR (MATING SIDE)



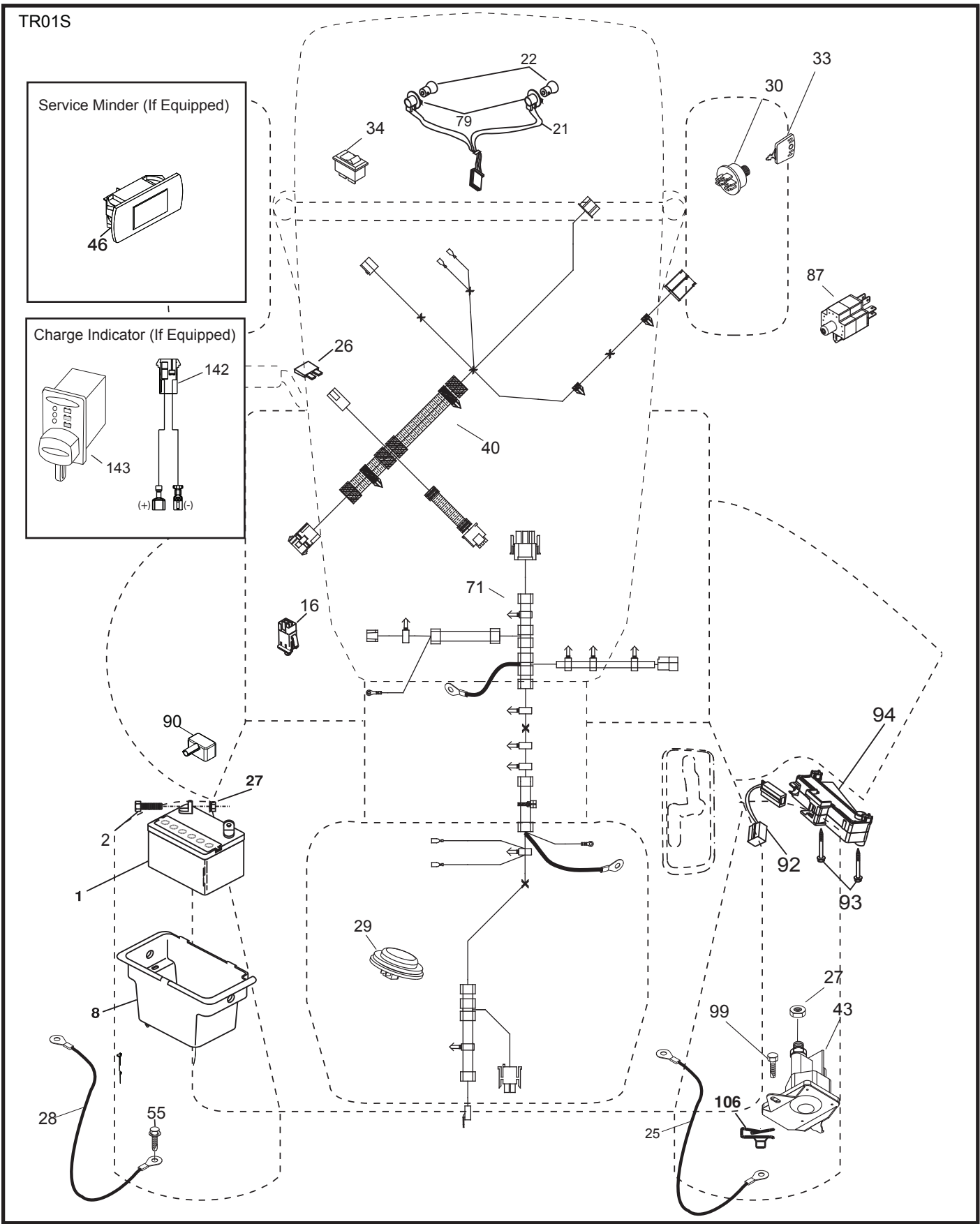
DASH HARNESS CONNECTOR (MATING SIDE)

WIRING INSULATED CLIPS  
NOTE: IF WIRING INSULATED CLIPS WERE REMOVED FOR SERVICING OF UNIT, THEY SHOULD BE RE-INSTALLED TO PROPERLY SECURE YOUR WIRING.

●  
NON-REMOVABLE CONNECTIONS

○  
REMOVABLE CONNECTIONS

**TRACTOR - - MODEL NO. LT1597 (96041041100), PRODUCT NO. 960 41 04-11  
ELECTRICAL 32**

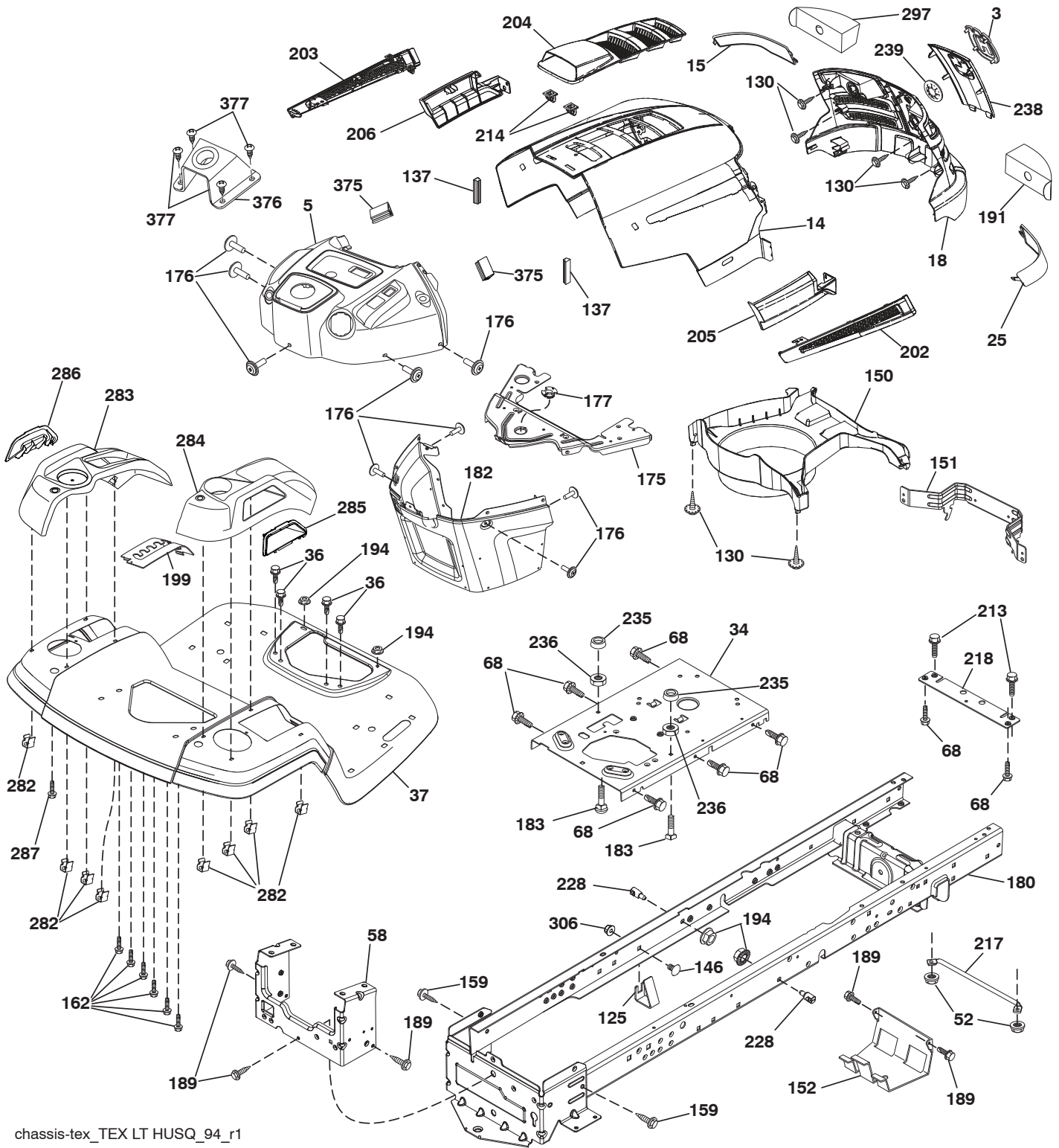


**TRACTOR - - MODEL NO. LT1597 (96041041100), PRODUCT NO. 960 41 04-11  
ELECTRICAL 32**

<b>KEY NO.</b>	<b>PART NO.</b>	<b>DESCRIPTION</b>
1	532 16 34-65	Battery
2	874 76 04-12	Bolt Hex Head 1/4-20 x 3/4
8	532 19 32-28	Box Battery
16	532 17 61-38	Switch Interlock Push-In
21	532 40 02-52	Harness Socket Light w/4152J
22	532 00 41-52	Bulb Light
25	581 49 80-01	Cable Starter
26	532 17 51-58	Fuse
27	596 13 36-01	Locknut, Keps, 1/4-20
28	532 42 16-86	Cable,Ground
29	532 40 15-45	Switch, Seat
30	532 19 33-50	Switch, Ign
33	532 41 19-33	Key, Ignition
34	532 11 07-12	Switch Light/Reset
40	581 02 31-01	Harness Ign. Dash
43	582 04 28-02	Solenoid w/Brass Plunger, Zn
46	594 91 91-01	Hourmeter, Srvminder, Rect
55	817 06 05-12	Screw Thdrol 5/16-18 x 3/4 TYTT
71	501 13 37-01	Harness Chassis
79	532 17 52-42	Socket Asm
87	532 19 78-02	Switch Interlock Clutch Cable
90	532 43 53-95	Cover Terminal
92	532 19 66-15	Harness Pigtail Reverse Switch
93	596 03 96-01	Bolt, Hex, 10-14 x 2-1/8
94	532 19 18-34	Module Reverse ROS
99	817 67 04-12	Screw Hexwsh Thdrol 1/4-20 x 3/4
106	532 17 48-14	Palnut 1/4 Lugs

**NOTE:** All component dimensions given in U.S. inches  
1 inch = 25.4 mm

TRACTOR - - MODEL NO. LT1597 (96041041100), PRODUCT NO. 960 41 04-11  
CHASSIS AND ENCLOSURES **39**



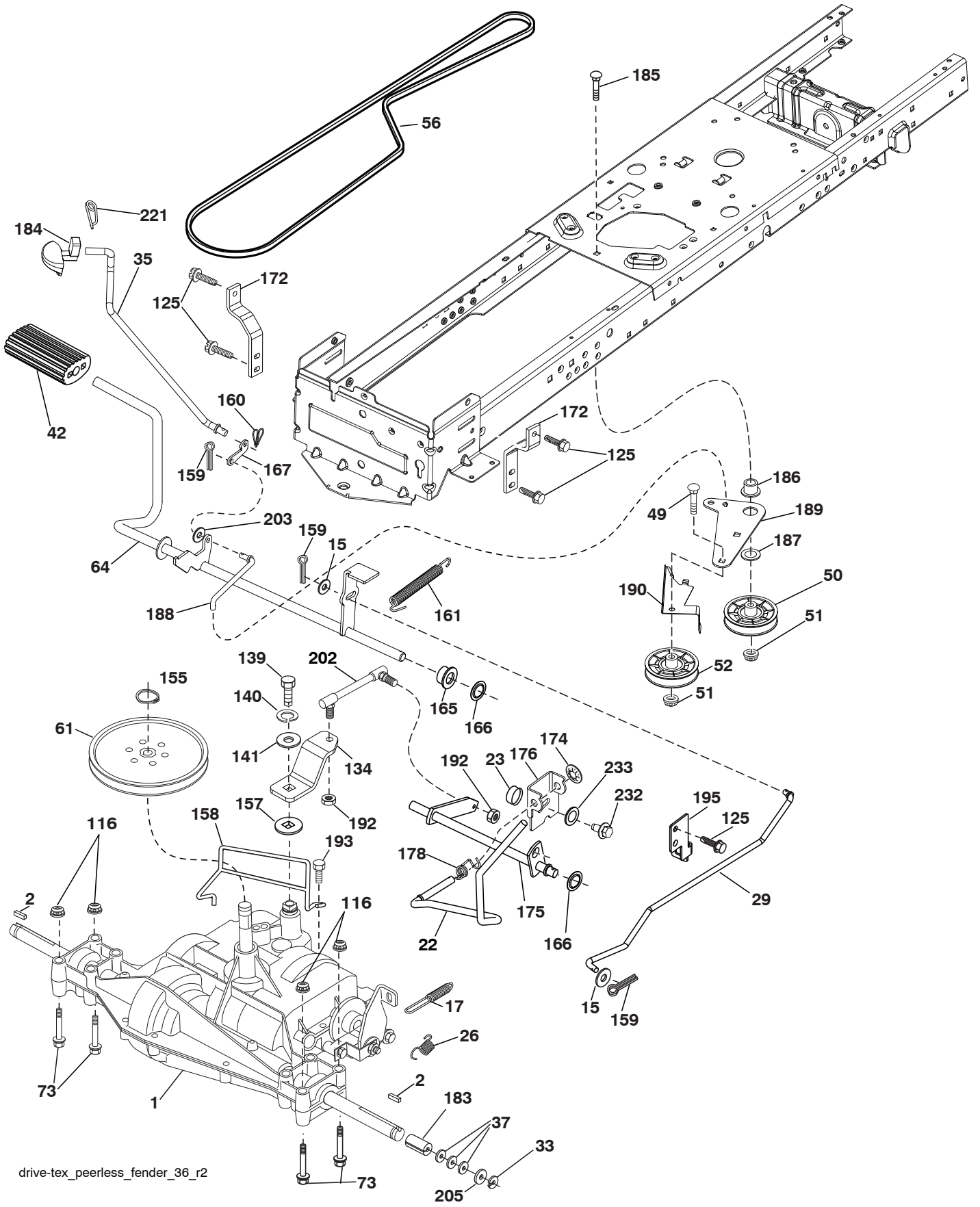
chassis-tex\_TEX LT HUSQ\_94\_r1

**TRACTOR - - MODEL NO. LT1597 (96041041100), PRODUCT NO. 960 41 04-11  
CHASSIS AND ENCLOSURES **39****

KEY NO.	PART NO.	DESCRIPTION
3	581 05 63-01	Logo
5	585 52 98-05	Dash, Upper
14	532 44 12-67	Hood
15	532 44 14-28	Lens LH
18	532 43 94-21	Subassmbly, Grill, Husqvarna LT 498
25	532 44 14-27	Lens RH
34	580 91 08-01	Plate Engine
36	817 06 05-12	Screw 5/16-18 x 3/4
37	532 44 12-66	Fender
52	596 04 05-01	Nut, Lock, Hex, Prvl, 5/16-18
58	532 41 22-80	Drawbar Upper
68	596 03 07-01	Screw, Hexagon, 5/16-18 x 1/2
125	581 68 48-01	Clip Fuel Line
130	596 32 17-01	Screw, #10 x 0.750, BOS, Thread
137	532 40 75-90	Bumper Dash
146	581 85 79-01	Bolt
150	532 40 75-37	Air Duct
151	532 40 78-07	Bracket Pivot
152	532 19 95-35	Shield Browning
159	817 00 06-12	Screw 3/8-16 x 3/4
162	596 13 41-01	Screw, Hex, Tap, 1/4-15 x 1/2
175	532 19 94-72	Crossmember
176	532 40 07-76	Screw 10-24 x 5/8
177	532 19 52-28	Bushing Steering
180	532 41 50-63	Chassis
182	532 40 71-76	Dash Lower
183	595 30 57-01	Screw, Hexagon, 5/16-18 x1-1/4
189	817 00 05-12	Screw 5/16-18 x 3/4
191	532 41 65-01	Insert Reflective RH
194	596 13 57-01	Nut, Lock, Prvl, Torq, 5/16-18 x .68
199	532 41 34-85	Plate Deck Lift
202	532 44 13-42	Vent Side Hood RH
203	532 44 13-43	Vent Side Hood LH
204	532 44 13-75	Vent Top Hood
205	532 44 13-44	Skirt Side RH
206	532 44 13-45	Skirt Side LH
213	596 03 05-01	Bolt, Hex HD, 5/16-18 unc x 3/4
214	532 19 91-45	Clip Retainer
217	532 40 91-67	Rod Pivot Hood
218	532 19 63-95	X-Piece Hood Stop
228	532 19 51-61	Stud Fastener
235	596 56 42-01	Spacer, Fender, Clr, Zn
236	873 93 05-00	Nut Center Lock 5/16-18 unc
238	532 44 13-74	Trim
239	532 40 48-83	Clip Tinnerman
282	532 41 41-10	Clip retainer Console
283	532 44 33-30	Console Shift
284	532 44 20-39	Console Deck Lift
285	532 41 63-15	Console INSRT RH HUSQ
286	532 41 63-17	Console INSRT LH HUSQ
287	817 60 04-06	Screw Hex Washhead. 1/4-20 x 3/8
297	532 40 66-65	Insert Reflective LH
306	873 90 06-00	Nut Lock
375	586 90 82-01	Dash Clip-On Bumper
376	589 45 87-01	Mount Asm Huslt Upper Steering
377	589 45 53-01	Screw 10 x 1/2 ZN PL
- -	597 33 48-01	Bumper, Trctr, 1 Tube, Std, Blk

**NOTE:** All component dimensions given in U.S. inches  
1 inch = 25.4 mm

TRACTOR - - MODEL NO. LT1597 (96041041100), PRODUCT NO. 960 41 04-11  
DRIVE **40**



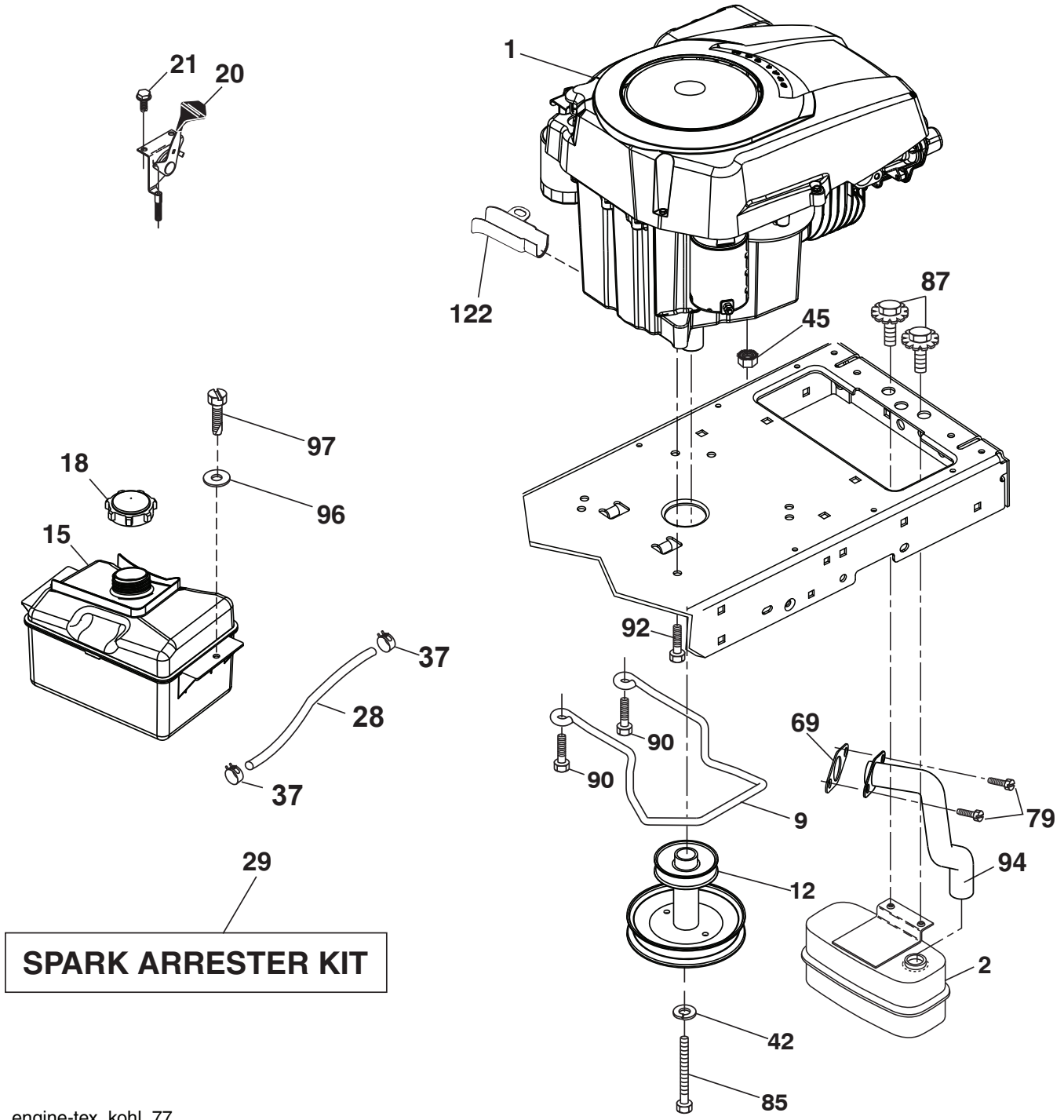
drive-tex\_peerless\_fender\_36\_r2



**TRACTOR - - MODEL NO. LT1597 (96041041100), PRODUCT NO. 960 41 04-11  
DRIVE 40**

KEY NO.	PART NO.	DESCRIPTION	KEY NO.	PART NO.	DESCRIPTION
1	-----	Transaxle, Peerless 206-565 (197941) (Order parts from trans- axle manufacturer.)	160	596 02 94-01	Clip, Retainer, "M-Shape"
2	532 12 35-83	Key Square	161	532 10 57-09	Spring, Return, Clutch
15	819 13 13-16	Washer 13/32 x 13/16 x 16 Ga.	165	532 19 62-12	Bushing Shaft Brake Hand Control
17	532 19 72-97	Spring, Brake	166	532 42 91-64	Nut Push .625
22	532 19 76-60	Rod Shift	167	532 40 52-57	Latch Brake Parking
23	532 12 12-74	Knob Duckhead 1/2-13	172	532 19 76-57	Strap Torque LH
26	532 19 74-55	Spring Brake Return	174	532 19 72-89	Nut Push
29	593 87 49-01	Rod, Brake, Peerless	175	532 19 78-58	Shaft Asm. Shift
33	812 00 00-01	Ring E	176	532 19 62-14	Arm Clevis Rod Shift
35	596 87 48-01	Rod, Control, Park, Txit, Clr, Zinc	178	532 19 74-56	Spring Shift
37	532 12 17-49	Washer 25/32 x 1-1/4 x 16 Ga.	183	532 13 70-57	Spacer Axle
42	532 00 88-83	Cover, Pedal, Blk, Round	184	532 41 14-84	Knob
49	596 13 62-01	Bolt, Cup Head, 3/8-16 x 3/4	185	872 11 06-22	Bolt
50	532 19 43-27	Pulley Idler Flat	186	532 19 43-21	Spacer Retainer
51	873 90 06-00	Lock Nut 3/8-16	187	596 13 55-01	Washer, 13/32 x 2, Clear, Zinc
52	532 19 43-26	Idler V-Groove	188	582 21 70-01	Link Clutch Ground Drive, Long
56	532 19 43-46	V-Belt, Drive	189	532 19 43-17	Bellcrank Ground Drive
61	532 12 36-66	Pulley Transaxle	190	532 19 43-18	Keeper Bellcrank Ground Drive
64	532 19 62-00	Shaft Asm. Pedal Brake Control	192	532 15 03-60	Nut Lock Center 1/4-28 Fnthd
73	596 13 65-01	Bolt, Hex Head, 5/16-18 x 1-1/2	193	817 06 05-12	Screw 5/16-18 x 3/4
116	596 13 57-01	Nut, Lock, Prvl, Torq, 5/16-18 x .68	195	532 19 73-32	Bracket Brake Rod
125	817 00 05-12	Screw 5/16-18 x 3/4	202	597 07 94-01	Link, Trans., Shift, Pmst, 18
134	532 19 78-57	Asm Shift	203	596 20 41-01	Washer, 11/32 x 11/16 x 14
139	596 13 66-01	Bolt, Hex Head, 1/4-28 x 3/4	205	532 12 17-48	Washer 25/32 x 1-5/8 16 Ga.
140	596 02 98-01	Spring, Lock, Washer, Square Ends	221	532 40 31-87	Retainer Spring Clip Handle
141	596 03 98-01	Washer, 9/32 x 3/4, Clear, Zinc	232	596 23 86-01	Bolt, Hex, 7/16-14 x 1, Clr, Zinc
155	812 00 00-28	Ring Retainer	233	596 13 52-01	Washer, Lock, 0.47 x 1, Clear, Zinc
157	532 10 57-01	Washer Plate Shift			
158	593 85 35-01	Keep Belt, Pmst, New			
159	596 02 95-01	Pin, Cotter, 1/8 Dia. x 3/4			

**NOTE:** All component dimensions given in U.S. inches  
1 inch = 25.4 mm



engine-tex\_kohl\_77

**TRACTOR - - MODEL NO. LT1597 (96041041100), PRODUCT NO. 960 41 04-11  
ENGINE 24**

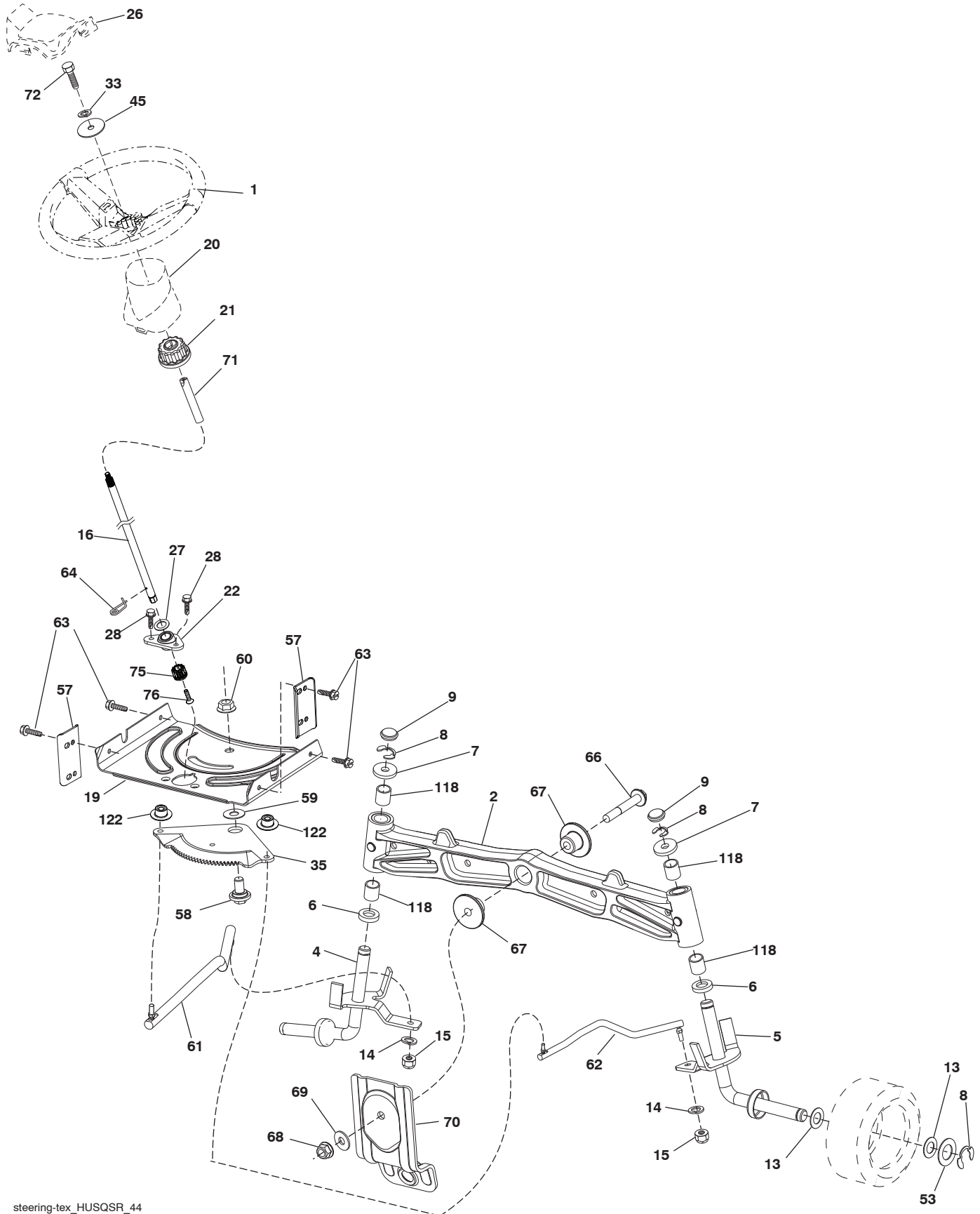
KEY NO.	PART NO.	DESCRIPTION
1	-----	Engine Kohler Model No. SV530-3222 (592859001) (Order parts from engine manufacturer.)
2	590 64 53-01	Muffler
9	582 54 03-02	Keeper Belt Engine
12	586 72 90-01	Pulley Engine
15	581 28 99-01	Tank Fuel 1.5
18	532 43 02-20	Cap Fuel
20	587 24 26-01	Control Throttle
21	596 32 17-01	Screw, #10 x 0.750, Bos, Thread
28	532 13 70-40	Fuel Line
29	532 13 71-80	Spark Arrester Kit
37	532 12 34-87	Clamp Hose
42	596 23 89-01	Washer, 7/16 in., Clr, Zn
45	596 13 36-01	Locknut, Keps, 1/4-20
69	532 18 59-09	Gasket
79	596 13 42-01	Screw, Hex, Socket, 5-16-18 x 3/4
85	501 60 65-01	Bolt Hex 7/16-20 x 4 Gr. 5
87	532 17 18-77	Bolt 5/16-18 unc x 3/4 w/Sems
90	817 00 06-16	Screw 3/8-16 x 1
92	817 12 06-16	Screw 3/8-16 x 1
94	583 95 53-01	Tube Exhaust
96	596 13 53-01	Washer, Plain, 9/32 x 7/8, Clr, Zn
97	817 67 04-12	Screw 1/4-20 x 3/4
122	532 42 19-22	Extension Drain Oil

**NOTE:** All component dimensions given in U.S. inches  
1 inch = 25.4 mm

For engine service and replacement parts, call the toll free number for your engine manufacturer listed below:

Kohler Co. 1-800-544-2444

**TRACTOR - - MODEL NO. LT1597 (96041041100), PRODUCT NO. 960 41 04-11**  
**STEERING ASSEMBLY [41]**



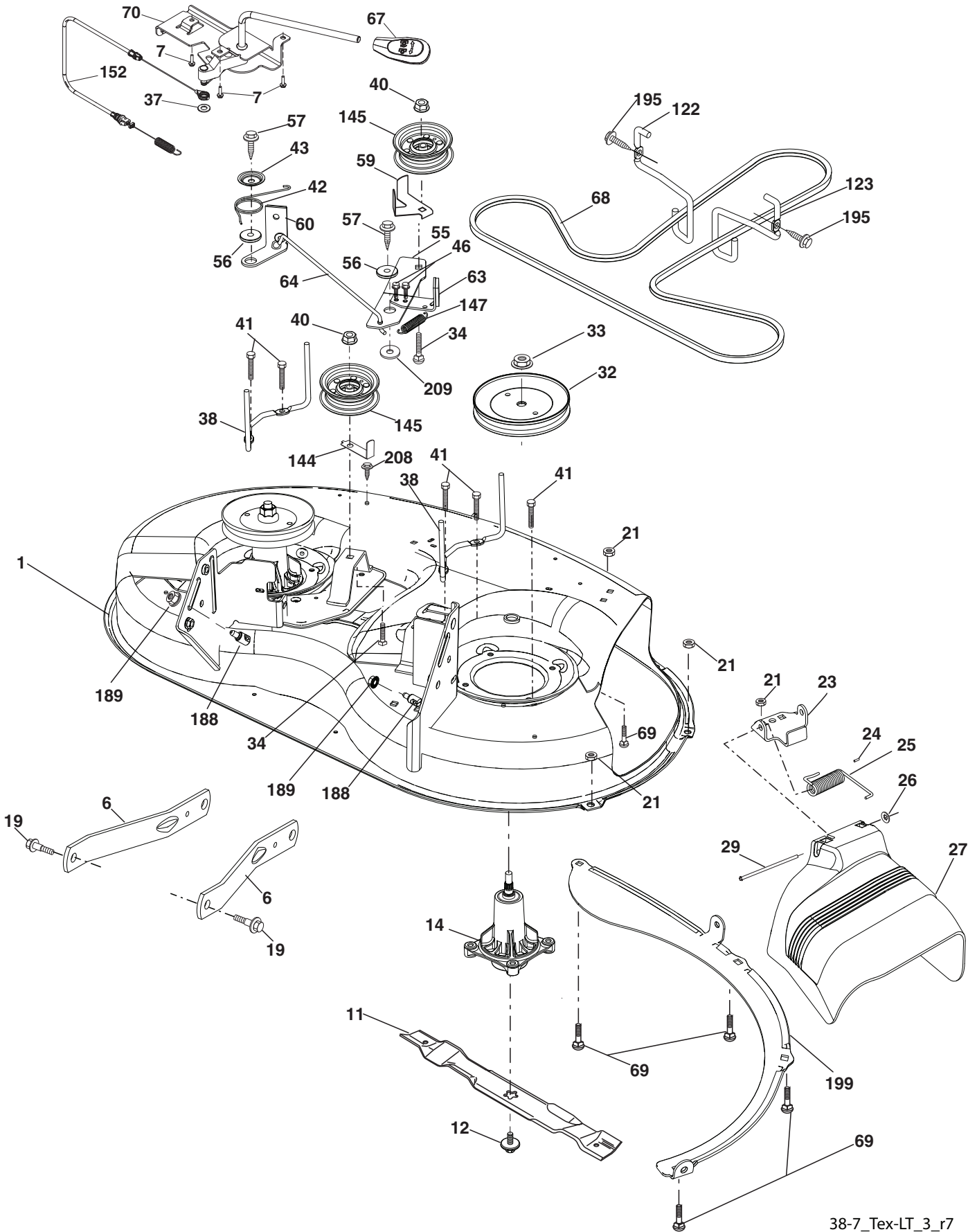
steering-tex\_HUSQSR\_44

**TRACTOR - - MODEL NO. LT1597 (96041041100), PRODUCT NO. 960 41 04-11  
STEERING ASSEMBLY 41**

KEY NO.	PART NO.	DESCRIPTION
1	532 43 97-40	Wheel, Steering
2	532 41 35-91	Axle Asm., Front
4	532 40 30-87	Spindle Asm., LH
5	532 40 30-88	Spindle Asm., RH
6	532 00 62-66	Washer, Thrust, .75 x 1.230
7	532 12 17-48	Washer 25/32 x 1-5/8 x 16 Ga.
8	812 00 00-29	Ring, clip #T5304-75
9	532 12 12-32	Cap, Spindle
13	532 12 17-49	Washer 25/32 x 1-1/4 x 16 Ga.
14	596 23 87-01	Washer, Spring Lock, .381 ID x .680
15	873 54 06-00	Nut, Crown Lock 3/8-24 unf
16	585 86 92-02	Steering Shaft
19	532 19 47-29	Plate Steering
20	532 44 14-25	Boot, Steering
21	532 18 67-37	Adapter, Wheel Steering
22	585 02 98-02	Bearing
26	532 43 97-43	Insert, Wheel Steering
27	596 93 34-01	Washer, Plain
28	817 00 06-12	Screw 3/8-16 x 3/4
33	539 99 01-87	Washer Lock 5/16
35	532 19 47-32	Gear, Sector Plate
45	596 04 00-01	Washer, 11/32 x 2-3/8", Clr, Zn
53	532 18 89-67	Washer Hardened .793 x 1.637 x .060
57	532 40 74-65	Bracket Upstop
58	532 19 47-47	Bolt Shoulder Sector Pivot CFM
59	532 19 47-48	Washer Thrust Sector Steering
60	873 97 10-00	Nut Flange Lock 5/8-11
61	597 04 78-02	Draglink, LH, Ballstud, Std, Raw
62	597 04 79-02	Draglink, RH, Ballstud, Std, Raw
63	817 00 05-12	Screw 5/16-18 x 3/4
64	532 19 98-49	Retainer Clip Spring Steering
66	871 02 07-48	Bolt Hex Fghd 7/16-14 x 3 Serr
67	532 19 47-37	Bushing PM Front Axle
68	873 90 07-00	Nut Lock Flange 7/16-14 Gr. 5
69	532 19 91-62	Washer 1.5 x .505 x .118
70	585 33 88-01	Bracket Deck Susp. Front
71	532 19 07-52	Shaft Extension Steering
72	596 03 97-01	Bolt, Hex Head, 5/16-18 unc x 4", Gr. 5
75	580 68 37-01	Pinion
76	580 68 36-01	Screw Head Sock
118	532 40 60-13	Bushing
122	532 44 49-62	Cap Gear Sector

**NOTE:** All component dimensions given in U.S. inches  
1 inch = 25.4 mm

TRACTOR - - MODEL NO. LT1597 (96041041100), PRODUCT NO. 960 41 04-11  
MOWER DECK 44



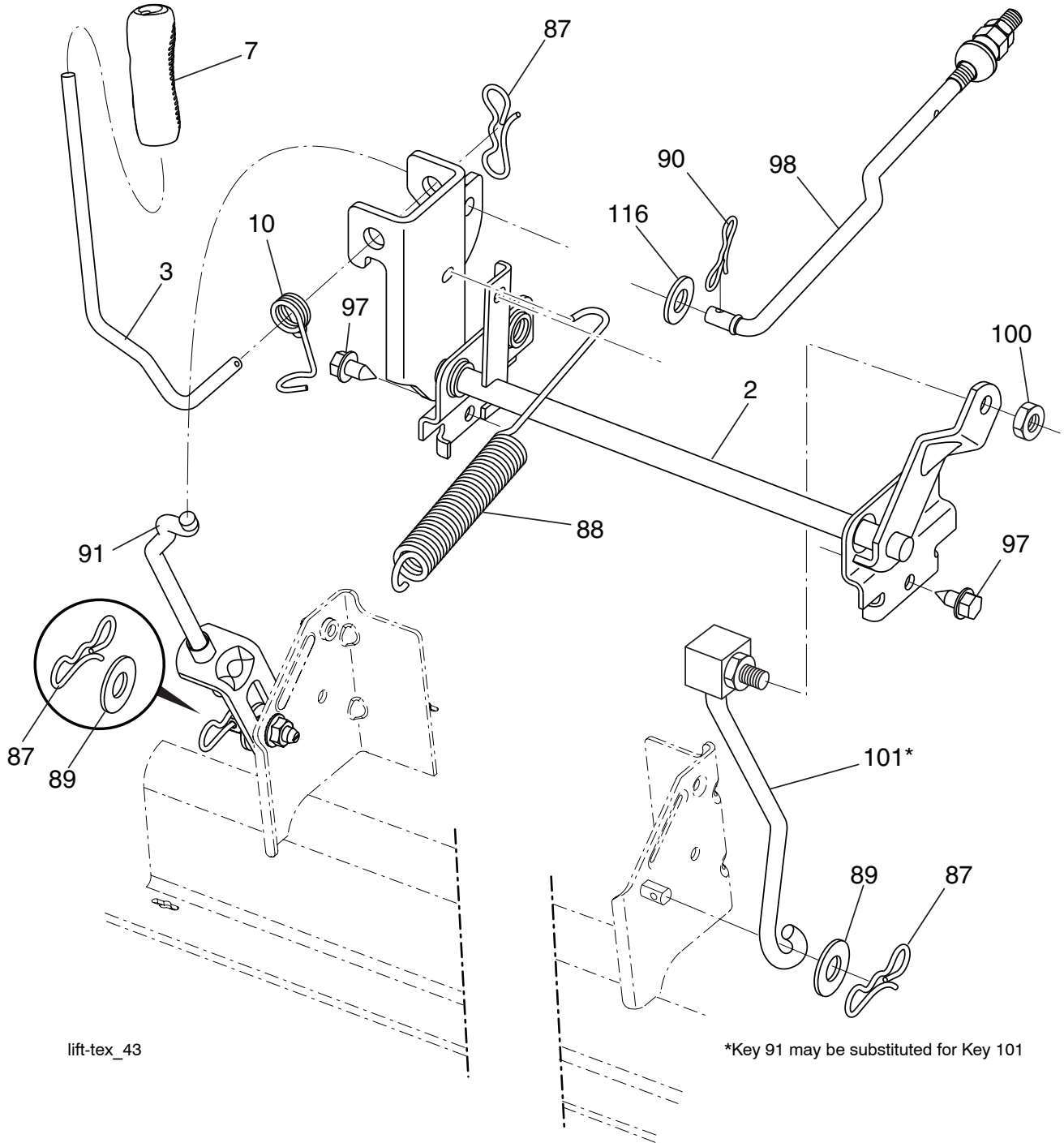
38-7\_Tex-LT\_3\_r7

**TRACTOR - - MODEL NO. LT1597 (96041041100), PRODUCT NO. 960 41 04-11  
MOWER DECK 44**

KEY NO.	PART NO.	DESCRIPTION	KEY NO.	PART NO.	DESCRIPTION
1	532 40 78-15	Kit, SVC, Weldment 38", 194251 x 431	56	532 19 90-92	Spacer, Retainer
6	532 19 51-86	Arm Suspension	57	817 00 06-16	Screw 3/8-16 x 1
7	596 32 17-01	Screw, #10 x 0.750, Bos, Thread	59	532 14 10-43	Guard, Tuv Idler
11	581 11 63-01	Blade	60	532 19 94-71	Arm Brake Mower
12	584 30 93-01	Screw 7/16-20 x 1 Hex	63	532 19 94-70	Arm Brake Mower
14	587 81 97-01	Kit, Mandrel, Nongrease, Tall (includes mandrel and bolts)	64	532 19 97-90	Link Brake
19	532 19 65-39	Bolt, Shoulder	67	532 40 30-12	Handle Clutch Cable
21	596 04 05-01	Nut, Lock, Hex, Prvl, 5-16-18	68	532 40 83-81	V-Belt
23	532 19 25-57	Bracket, Deflector	69	596 13 64-01	Bolt, Cup Head, 5/16-18 x 5/8
24	532 10 53-04	Cap, Sleeve	70	532 40 12-46	Clutch Asm Manual
25	532 19 70-26	Spring, Torsion, Deflector	122	532 19 72-58	Keeper Belt Engine LH
26	532 11 04-52	Nut, Push	123	532 19 72-59	Keeper Belt Engine RH
27	532 40 14-72	Shield, Deflector	144	532 19 34-14	Keeper Belt
29	595 29 70-01	Rod, Hinge	145	532 19 31-97	Pulley Idler
32	532 19 97-89	Pulley, Mandrel	147	532 40 18-72	Spring Return
33	596 13 48-01	Nut, Hex, 9/16-18 x 1.010	152	532 43 51-11	Manual Clutch Cable
34	596 13 61-01	Bolt, Cup Head, 3/8-16 x 1-1/2"	188	532 19 51-61	Stud Fastener
37	596 56 53-01	Washer, 3/8 x 0.08 in., St. Clr, Zinc	189	596 13 57-01	Nut, Lock, Prvl, Torq, 5/16-18 x .68
38	532 19 95-41	Keeper Belt LH Mandrel	195	817 00 06-12	Screw 3/8-16 x 3/4
40	873 90 06-00	Nut, Lock Flg. 3/8-16 unc	199	532 40 00-95	Baffle Vortex
41	584 95 39-01	Bolt Hex Wshr	208	817 67 06-08	Screw Thdrol 3/8-16 x 1/2
42	532 19 84-10	Spring Torsion Brake	209	596 13 55-01	Washer, 13/32 x 2. Clear, Zinc
43	532 19 72-56	Spring Torsion Retainer	--	532 40 04-22	Replacement Mower, Complete
46	532 13 77-29	Screw 1/4-20 x 5/8			
55	532 19 72-49	Arm, Idler			

**NOTE:** All component dimensions given in U.S. inches  
1 inch = 25.4 mm

**TRACTOR - - MODEL NO. LT1597 (96041041100), PRODUCT NO. 960 41 04-11**  
**MOWER LIFT 45**



lift-tex\_43

\*Key 91 may be substituted for Key 101

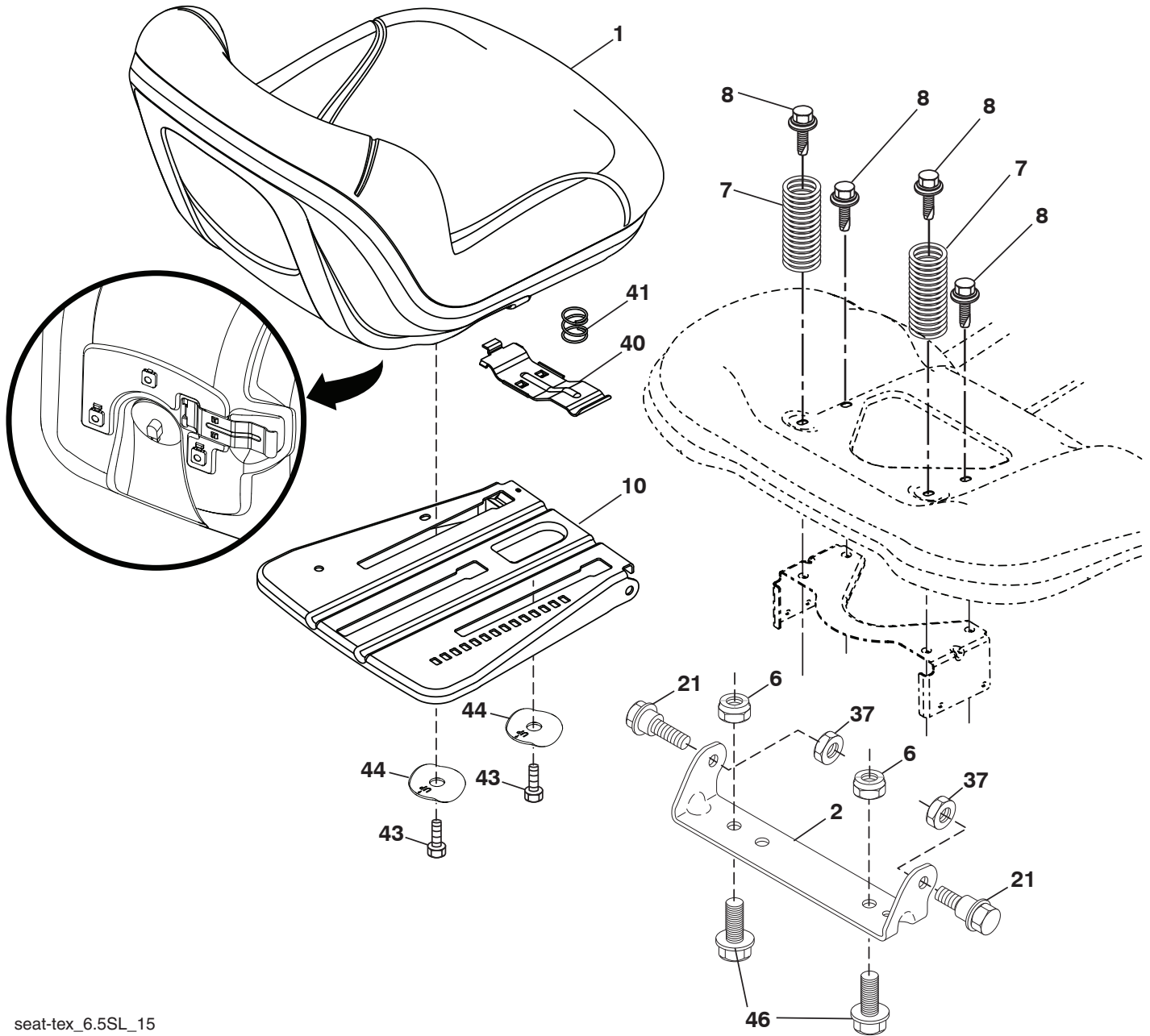
KEY NO.	PART NO.	DESCRIPTION
2	532 42 20-27	Shaft Asm., Lift
3	532 19 52-31	Lever Asm., Lift RH
7	580 96 23-01	Grip, Lever
10	532 19 63-14	Spring Torsion
87	532 19 42-09	Pin Cotter 7/16 Bow Tie Lock
88	532 41 07-10	Spring Lift Assist
89	819 19 19-12	Washer Clear Zinc
90	532 19 42-08	Pin Cotter 5/16 Bow Tie Lock
91	532 19 51-81	Link Lift Susp Mower Rear

KEY NO.	PART NO.	DESCRIPTION
97	817 00 06-12	Screw 3/8-16 x .75 Smgml Tap/R.Z
98	532 19 52-70	Link Lift Susp. Front Mower
100	595 30 59-01	Nut, Hex, Lock, 3/8-16
101	532 40 70-03	Link Asm. Lift
116	819 15 15-16	Washer 15/32 x 15/16 x 16 Ga.

**NOTE:** All component dimensions given in U.S. inches  
 1 inch = 25.4 mm



**TRACTOR - - MODEL NO. LT1597 (96041041100), PRODUCT NO. 960 41 04-11  
SEAT ASSEMBLY 42**



seat-tex\_6.5SL\_15

KEY NO.	PART NO.	DESCRIPTION
1	532 43 98-19	Seat
2	532 18 01-66	Bracket Pivot Fender
6	873 80 06-00	Nut, Lock w/Ins. 3/8-16 unc
7	589 48 35-01	Spring, Seat Cprsn
8	532 17 18-77	Bolt 5/16-18 unc x 3/4 w/Sems
10	596 65 74-02	Plate, Seat, Slide, 3 Pt., MS431
21	587 90 78-01	Bolt, Shoulder 5/16-18 x 5/8
37	596 58 37-02	Nut W/Nonmetal, Ins., Blk, Zinc

KEY NO.	PART NO.	DESCRIPTION
40	595 08 81-02	Handle, Seat, Slide, E-Dip x 431
41	532 19 82-00	Spring Latch
43	874 76 06-12	Bolt 3/8-16 unc x 3/4
44	501 05 18-01	Washer Winged 3/8 ID 1.5 OD
46	588 09 04-01	Bolt 3/8-16 x 1; 1.25 OD

**NOTE:** All component dimensions given in U.S. inches  
1 inch = 25.4 mm

