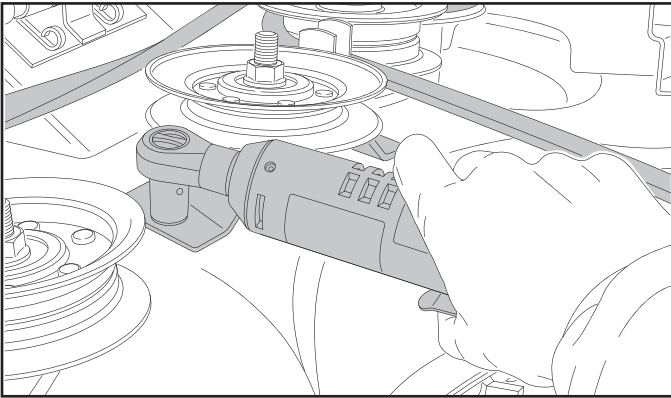


97 CRD BELT KEEPER SUPPLEMENT SHEET

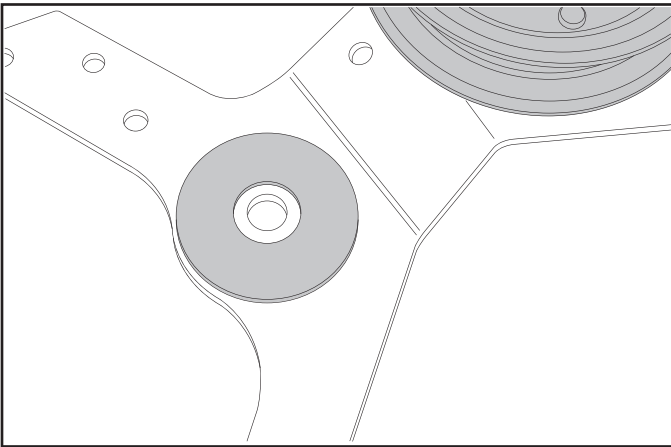
FOR FUTURE REFERENCE AND REPAIR PARTS ORDERING, KEEP THIS SUPPLEMENT SHEET WITH YOUR PRODUCT MANUAL.

11. Install the v-idler in the same orientation as the original was removed. Secure using the same hardware that was previously set aside. Torque to 15-25 ft-lbs.



12. Install the old clutching pulley to the new clutching arm. Torque the nut to 15-25 ft-lbs. Reinstall the brake linkage if present.

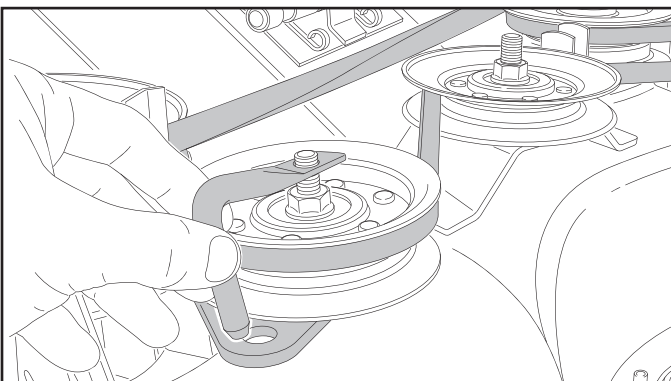
NOTE: The order of reassembly should be; bolt, deck bracket, thin washer, clutching arm, thick spacer, nut.



13. Reinstall any components that were removed. Route belt included in this kit per the belt routing diagram.

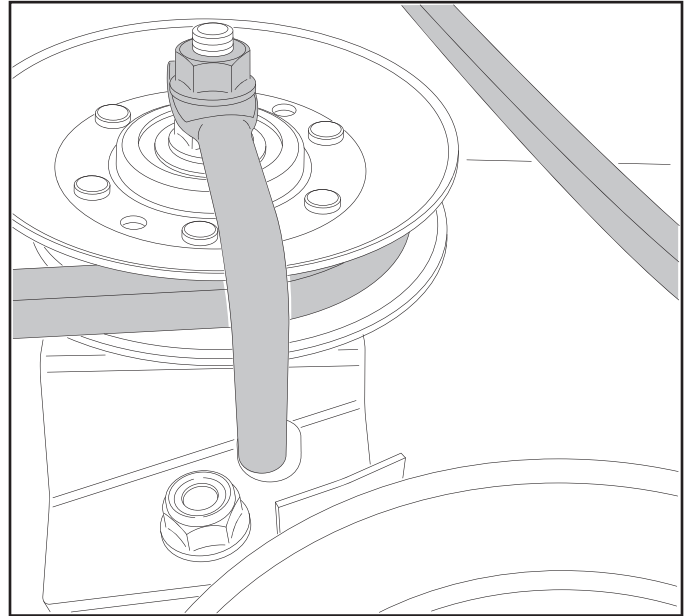
14. Install the zinc or grey clutching arm keeper (598969201) into the clutching arm as shown, thread nut (73900600) over the keeper, and torque to 15-25 ft-lbs.

NOTE: it is important that the keeper sits into its locating hole, verify that the keeper is located properly after installation.



15. Install the black v-idler keeper (598903802) as shown, thread nut over the keeper, and torque to 15-25 ft-lbs.

NOTE: It is important that the keeper sits into its locating hole, verify that the keeper is located properly after installation.

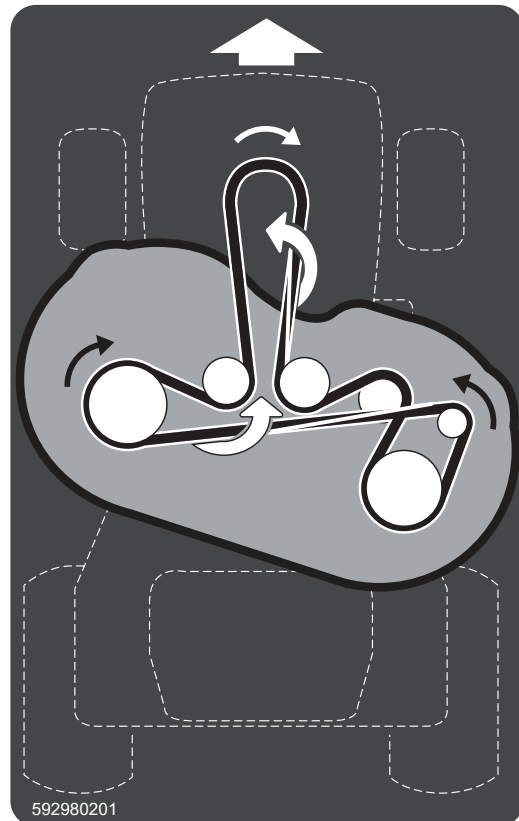


16. Replace existing deck links with those included with this kit.

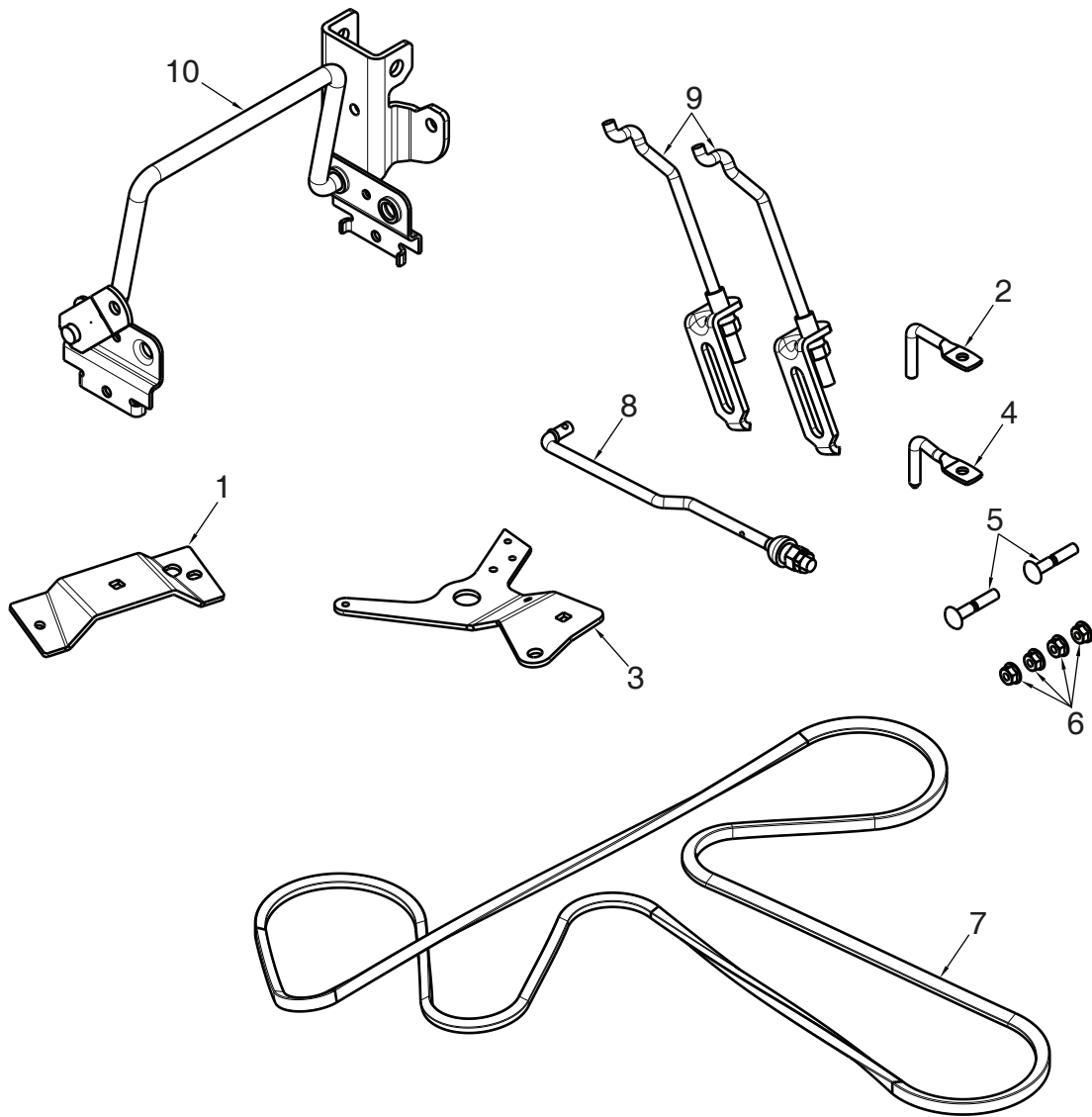
17. Rake and level the deck as specified in the owner's manual.

18. Reinstall all covers and guards.

BELT ROUTING DIAGRAM



592980201



Ref.	Part No.	Qty	Description	Kit / Assy Includes
1	599 21 07-03	1	Idler Bracket	
2	598 90 38-02	1	Belt Keeper, Black	
3	599 23 63-02	1	Clutching Arm	
4	598 96 92-01	1	Belt Keeper, Zinc or Grey	
5	596 13 63-01	2	Bolt	
6	873 90 06-00	4	Nut	
7	599 36 53-01	1	Belt	
8	581 50 96-06	1	Front Suspension Link	
9	589 46 48-04	2	Rear Lift Link	
10	532 43 69-96	1	Cross Shaft Weldment	
11	599 36 58-01	1	Instruction Sheet (Not Shown)	

