

ILLUSTRATED PARTS LIST

MODEL NUMBER ST327

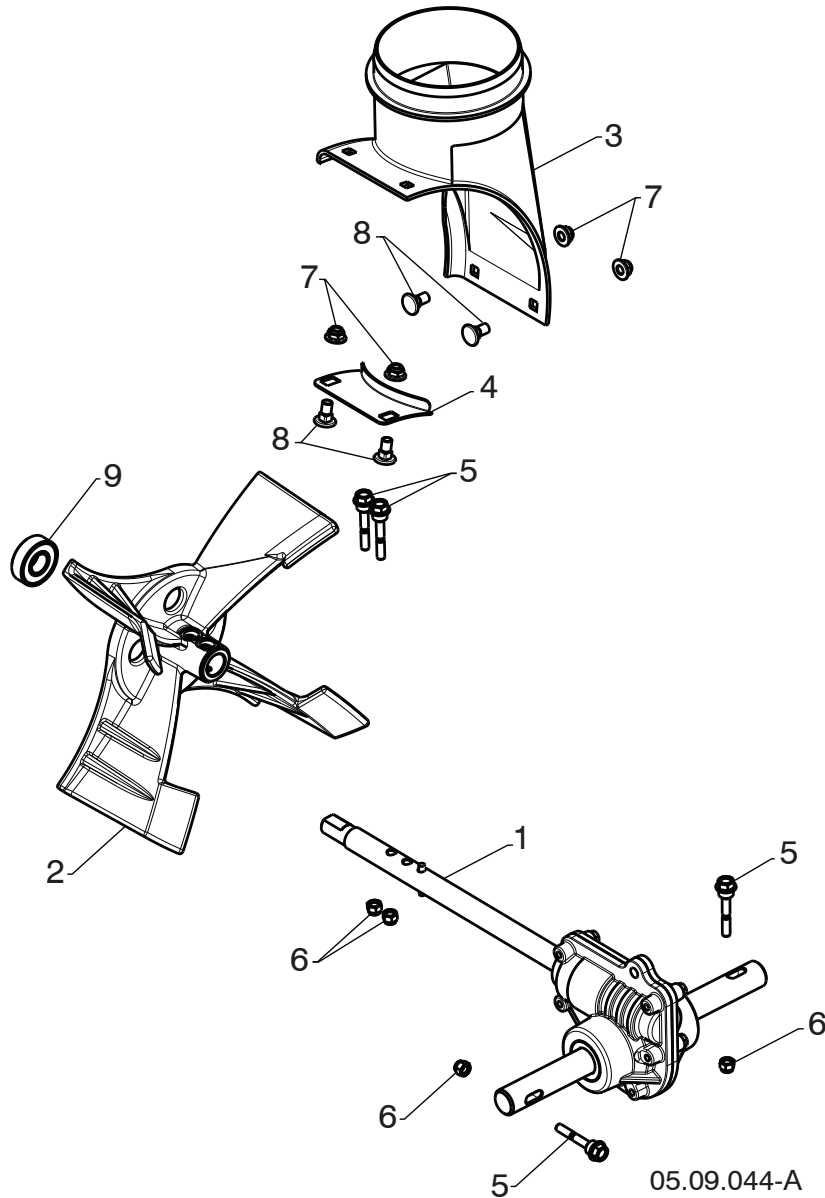
PRODUCT NUMBER 970 46 94-01

MFG. ID. NUMBER 97046940100

REPAIR PARTS

AUGER HOUSING / IMPELLER ASSEMBLY

SNOW THROWER - MODEL NO. ST327 (97046940100), PRODUCT NO. 970 46 94-01



Ref.	Part No.	Description
1	582 86 77-01	AUGER TRANSMISSION CAST IRON
2	596 92 01-01	LIGHT WEIGHT IMPELLER CAST IRON
3	585 05 69-01	CHUTE DISCHARGE BASE
4	597 43 30-02	BRACKET CORNER DISCHARGE BASE
5	588 07 75-02	BOLT SHEAR 1/4-20
6	595 08 66-01	NUT NYLOCK 1/4-20
7	585 69 13-01	NUT FLANGE NYLOCK 5/16-18
8	585 69 12-01	BOLT CARRIAGE WAFER HEAD 5/16-18 X 5/8
9	532 19 87-91	BEARING BALL

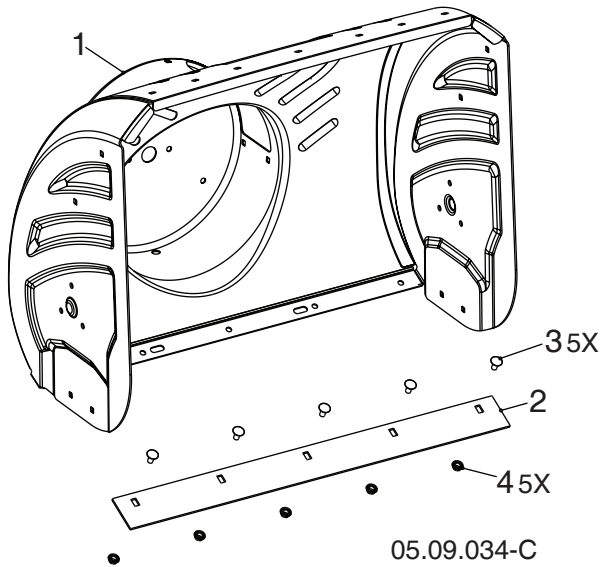
NOTE: All component dimensions given in U.S. inches. 1 inch = 25.4 mm

IMPORTANT: Use only Original Equipment Manufacturer (O.E.M.) replacement parts. Failure to do so could be hazardous, damage your snow thrower and void your warranty.

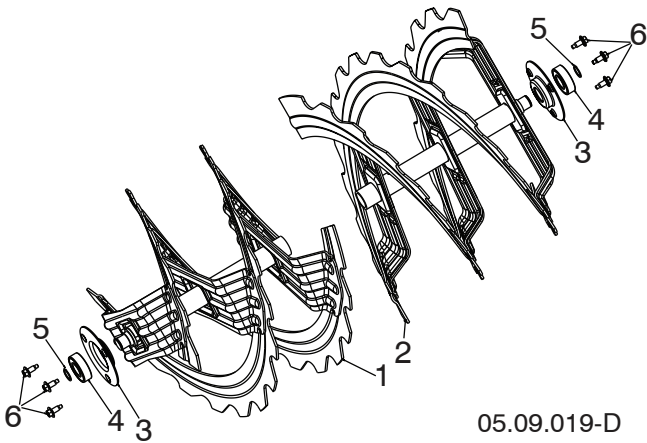
REPAIR PARTS

AUGER HOUSING / IMPELLER ASSEMBLY

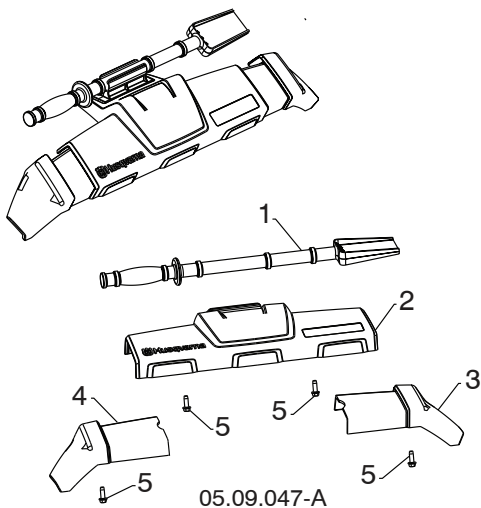
SNOW THROWER - MODEL NO. ST327 (97046940100), PRODUCT NO. 970 46 94-01



Ref.	Part No.	Description
1	586 18 43-02	AUGER.HOUSING.27.LS
2	585 04 84-02	SHAVE.PLATE.27.LS MS428
3	596 03 94-01	BOLT.CARRIAGE 5/16-18 X .625
4	596 03 92-01	NUT. 5/16-18 HEX TOP LOCK



Ref.	Part No.	Description
1	581 97 03-03	AUGER RIBBON 24 RH LS
2	581 97 04-03	AUGER RIBBON 24 LH LS
3	532 43 40-10	SUPPORT AUGER BEARING
4	532 43 76-22	BEARING IDLER 6203
5	812 00 00-28	RING RETAINING #5100-52
6	585 51 78-01	SCREW 1/4-20 X .65 W/DOG POINT



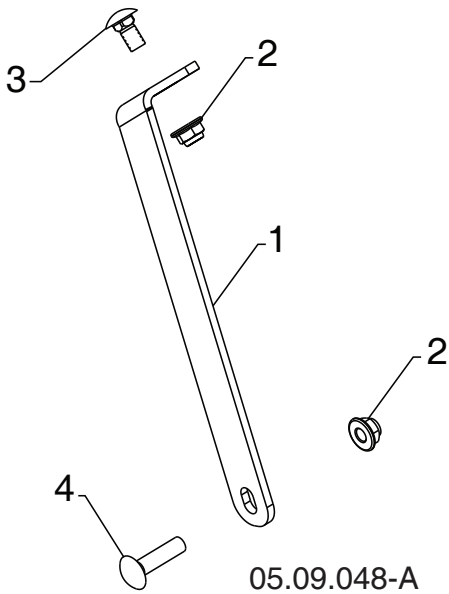
Ref.	Part No.	Description
1	532 19 21-99	TOOL CLEANOUT
2	586 41 48-02	AUGER FRONT TRIM ASM
3	586 33 03-02	TRIM AUGER HOUSING WING RH
4	586 33 04-02	TRIM AUGER HOUSING WING LH
5	817 06 04-10	SCREW HEX WASHER TRI-LOBE 1/4-20 X 3/4

NOTE: All component dimensions given in U.S. inches. 1 inch = 25.4 mm
IMPORTANT: Use only Original Equipment Manufacturer (O.E.M.) replacement parts. Failure to do so could be hazardous, damage your snow thrower and void your warranty.

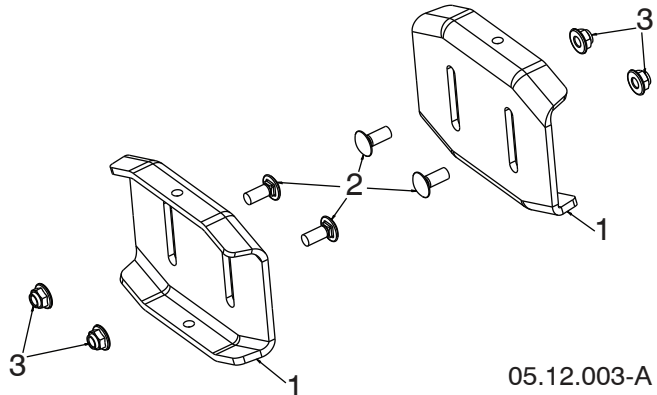
REPAIR PARTS

AUGER HOUSING / IMPELLER ASSEMBLY

SNOW THROWER - MODEL NO. ST327 (97046940100), PRODUCT NO. 970 46 94-01



Ref.	Part No.	Description
1	585 10 90-04	SUPPORT GEARBOX LS
2	585 69 13-01	NUT HEX FLG NYLOCK BLK 5/16-18
3	585 83 20-01	BOLT CARRIAGE BLK 5/16-18 X 5/8 BLK
4	872 11 05-10	BOLT CARRIAGE 5/16-18 X 1-1/4



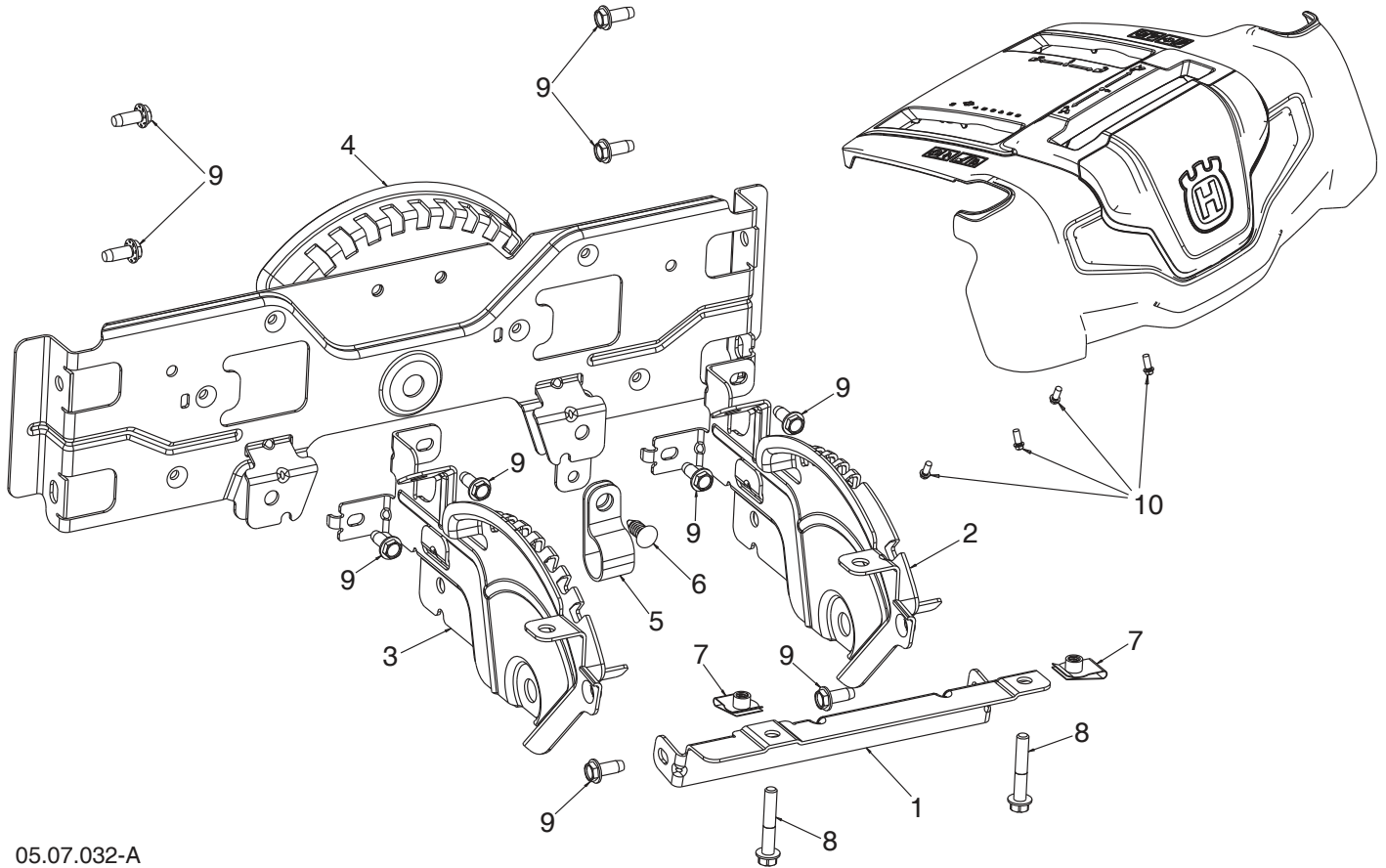
Ref.	Part No.	Description
1	532 40 78-34	SKID PLATE
2	585 69 17-01	BOLT CARRIAGE 5/16-18 X .750 - BLK
3	585 69 13-01	NUT FLANGE NYLOCK 5/16-18 BLK

NOTE: All component dimensions given in U.S. inches. 1 inch = 25.4 mm
IMPORTANT: Use only Original Equipment Manufacturer (O.E.M.) replacement parts. Failure to do so could be hazardous, damage your snow thrower and void your warranty.

REPAIR PARTS

CONTROL PANEL / DISCHARGE CHUTE

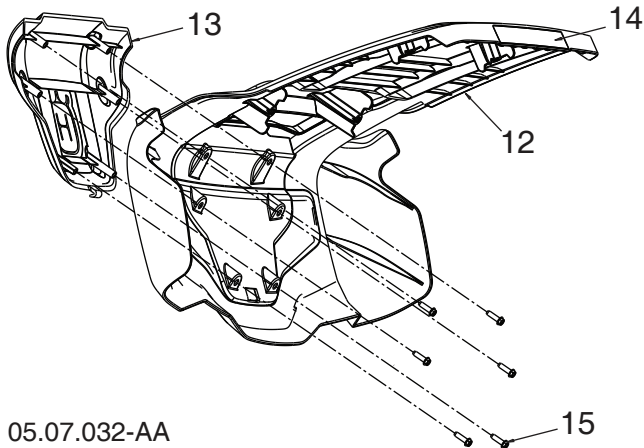
SNOW THROWER - MODEL NO. **ST327** (97046940100), PRODUCT NO. 970 46 94-01



05.07.032-A

Ref.	Part No.	Description
1	597 99 19-02	BRACKET REAR MNT
2	597 99 22-02	BRACKET ASM SPEED CONTROL
3	597 99 23-02	BRACKET ASM DEFLECTOR CONTROL
4	597 99 24-02	BRACKET ASM FRONT MNT
5	532 19 79-91	P-CLIP
6	532 42 81-24	FIR TREE FASTENER

Ref.	Part No.	Description
7	532 41 76-93	1/4-20 U-NUT
8	501 40 66-01	SCREW HEX HD 1/4-20 X 1.50
9	817 06 04-10	SCREW HEX WASHER HD 1/4-20 X 5/8
10	532 19 41-89	SCREW HI-LO 13-16 X 5/8 HEX WASHER HD



05.07.032-AA

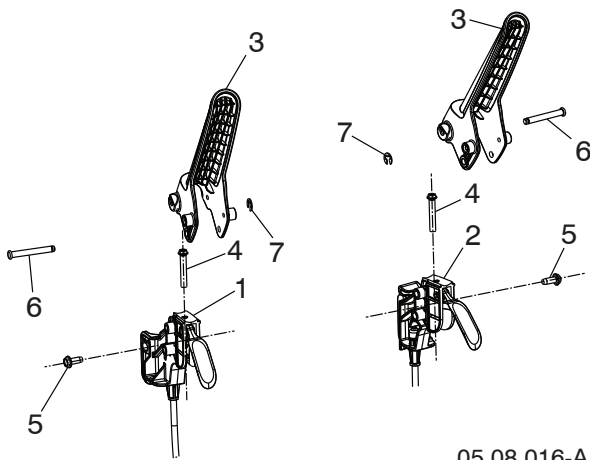
Ref.	Part No.	Description
12	598 80 37-01	CONSOLE BASE
13	598 80 38-01	CONSOLE APPLIQUE
14	598 81 20-01	WARNING DECAL - SNOW
15	532 16 34-09	FLANGE HEAD SCREW 12-16 HI-LOW X .625L

NOTE: All component dimensions given in U.S. inches. 1 inch = 25.4 mm
IMPORTANT: Use only Original Equipment Manufacturer (O.E.M.) replacement parts. Failure to do so could be hazardous, damage your snow thrower and void your warranty.

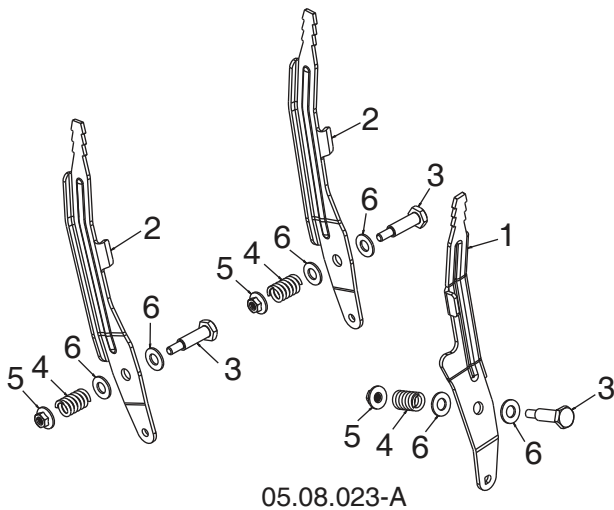
REPAIR PARTS

CONTROL PANEL / DISCHARGE CHUTE

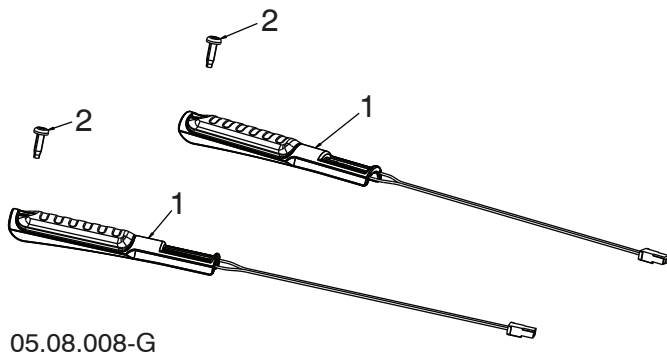
SNOW THROWER - MODEL NO. ST327 (97046940100), PRODUCT NO. 970 46 94-01



Ref.	Part No.	Description
1	588 26 39-01	CABLE, POWER STEER - LHS
2	588 26 39-02	CABLE, POWER STEER - RHS
3	582 91 78-01	LEVER, CONTROL
4	581 32 95-01	SCREW HI-LOW 13-16 X 1.50
5	817 06 04-10	SCREW 1/4-20 X .625
6	532 43 17-62	PIN, GROOVED
7	812 00 00-14	E-RING



Ref.	Part No.	Description
1	596 78 68-02	LEVER CONTROL CHUTE ROTATOR D HOLE
2	581 12 39-02	LEVER CONTROL SPEED/DEFLECTOR
3	581 32 97-02	BOLT SHOULDER 1/4-20
4	581 32 96-01	SPRING COMPRESSION
5	586 66 89-01	NUT FL LOCK 1/4-20
6	532 17 92-46	WASHER NYLON .375ID x .750OD x .062THK



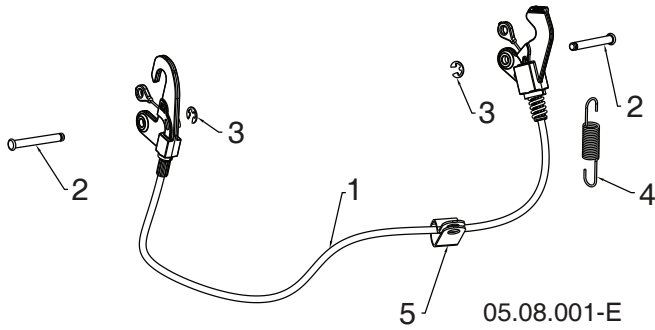
Ref.	Part No.	Description
1	590 49 36-01	GRIP, HEATED, DSST SHO
2	532 44 22-50	SCREW PAN HD TORX 1/4-20 X .75

NOTE: All component dimensions given in U.S. inches. 1 inch = 25.4 mm
IMPORTANT: Use only Original Equipment Manufacturer (O.E.M.) replacement parts. Failure to do so could be hazardous, damage your snow thrower and void your warranty.

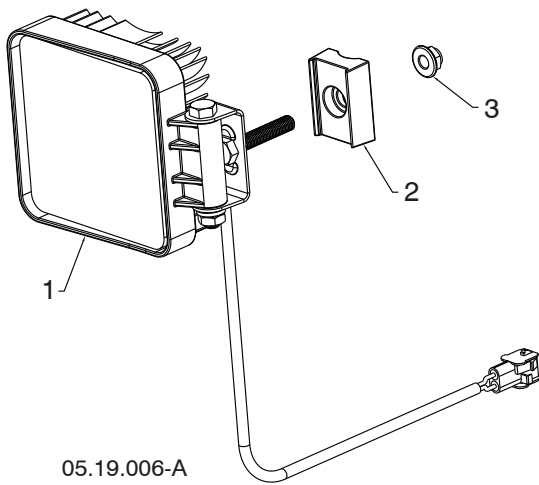
REPAIR PARTS

CONTROL PANEL / DISCHARGE CHUTE

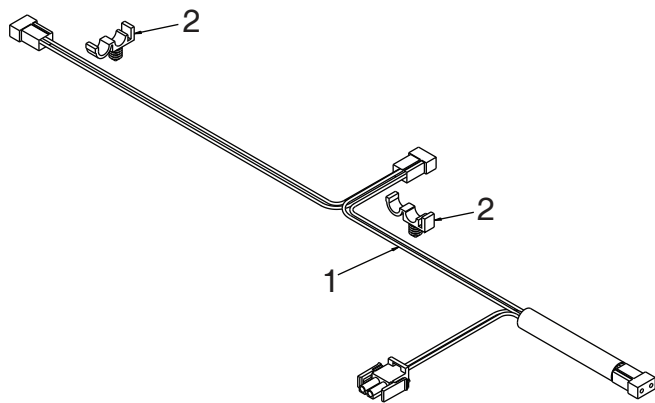
SNOW THROWER - MODEL NO. **ST327** (97046940100), PRODUCT NO. 970 46 94-01



Ref.	Part No.	Description
1	593 85 34-01	CABLE INTERLOCK
2	532 43 17-62	PIN GROOVED
3	812 00 00-14	E-RING
4	581 15 12-02	SPRING RETURN
5	532 19 79-91	CLIP CABLE BLACK



Ref.	Part No.	Description
1	590 07 13-01	4.25 X 4.25 LIGHT
2	590 73 98-01	LIGHT MOUNTING BRACKET
3	532 42 79-42	HEX HD 5/16-18 FLANGE NYLOCK



Ref.	Part No.	Description
1	598 80 36-01	HARNES WIRE LIGHTS & GRIPS
2	532 14 50-06	WIRE RETAINER

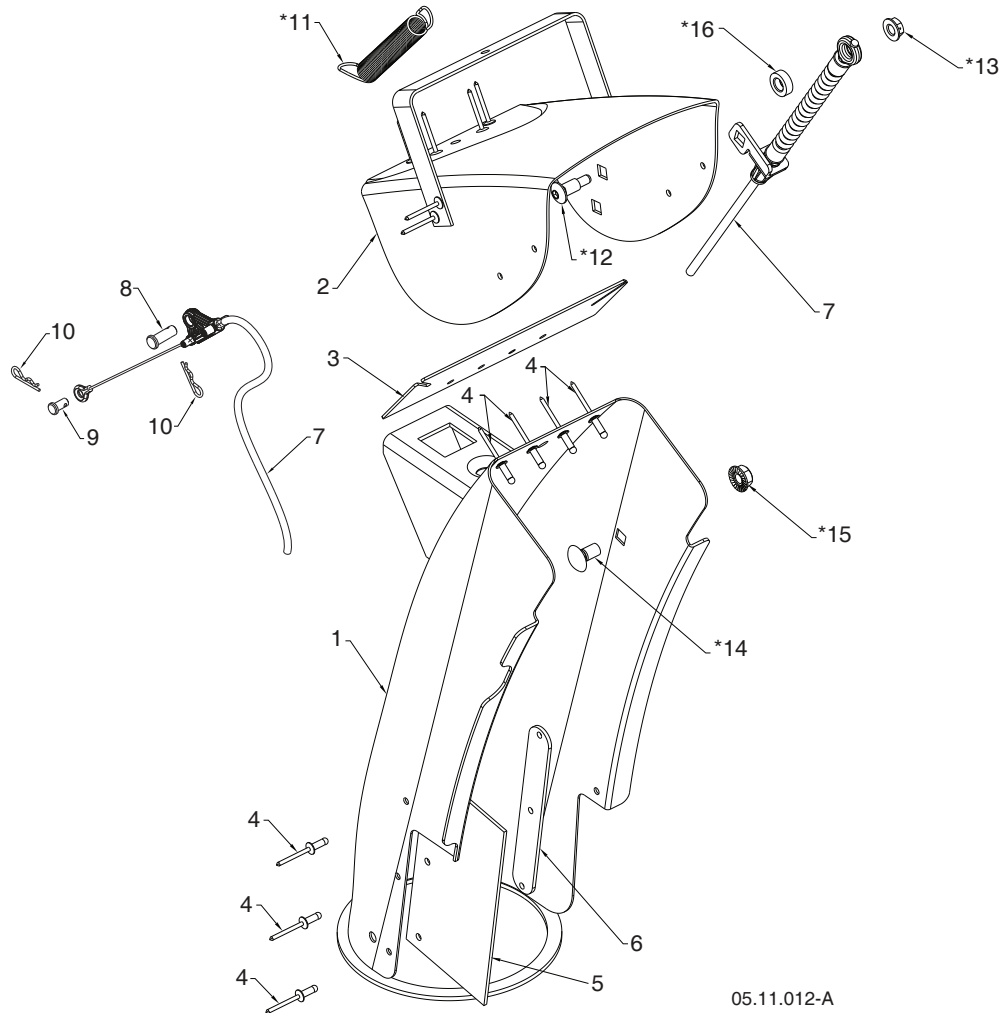
05.19.014-A

NOTE: All component dimensions given in U.S. inches. 1 inch = 25.4 mm
IMPORTANT: Use only Original Equipment Manufacturer (O.E.M.) replacement parts. Failure to do so could be hazardous, damage your snow thrower and void your warranty.

REPAIR PARTS

CONTROL PANEL / DISCHARGE CHUTE

SNOW THROWER - MODEL NO. **ST327** (97046940100), PRODUCT NO. 970 46 94-01



05.11.012-A

Ref.	Part No.	Description
1	532 44 33-28	CHUTE WELDMENT (INCLUDES 1, 2, 3, 4, 5, 6)
2	-----	DEFLECTOR WELDMENT
3	-----	DEFLECTOR SEAL
4	-----	POP RIVET
5	-----	CHUTE SNOW SHIELD
6	-----	SHIELD STRAP RETAINER
7	598 45 05-01	CONTROL.CHUTE.DEFLECTOR. BOWDEN
8	581 32 94-01	PIN CLEVIS 5/16 X .875
9	585 80 83-01	PIN CLEVIS 1/4 X .312

Ref.	Part No.	Description
10	532 42 33-03	HAIRPIN RETAINER
*11	532 18 45-05	DEFLECTOR SPRING
*12	501 41 73-01	CARRIAGE BOLT 1/4-20 X .544
*13	585 69 14-01	NUT 1/4-20
*14	585 83 20-01	CARRIAGE BOLT 3/8-16 X .625
*15	873 97 05-00	NUT 5/16-18
*16	501 41 74-01	WASHER .362 X .625 X .205 NYLON

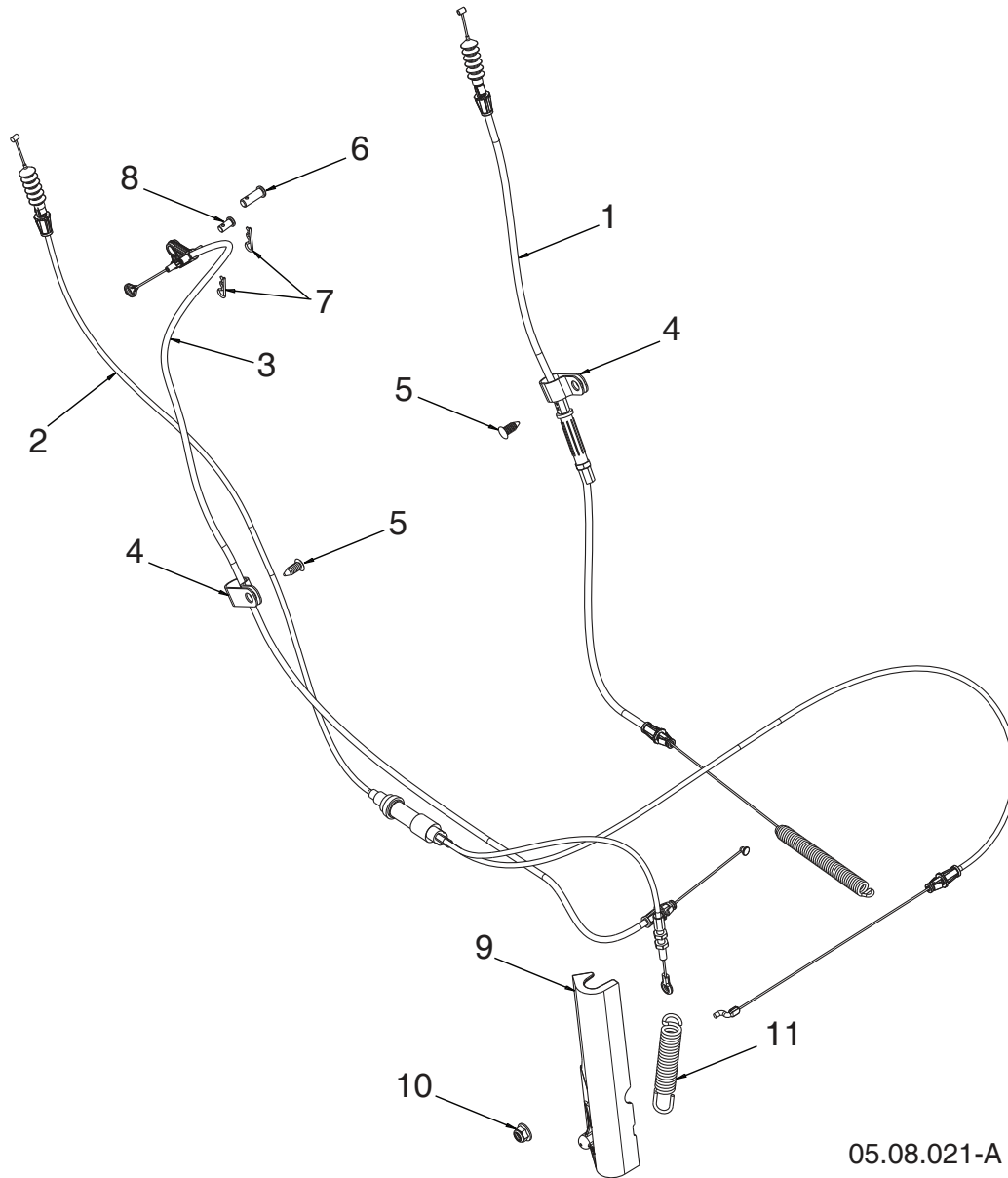
NOTE: ALL ITEMS MARKED WITH AN * ARE PROVIDED IN THE BAG OF ITEMS SHIPPED LOOSE WITH PRODUCT.

NOTE: All component dimensions given in U.S. inches. 1 inch = 25.4 mm
IMPORTANT: Use only Original Equipment Manufacturer (O.E.M.) replacement parts. Failure to do so could be hazardous, damage your snow thrower and void your warranty.

REPAIR PARTS

CONTROL PANEL / DISCHARGE CHUTE

SNOW THROWER - MODEL NO. **ST327** (97046940100), PRODUCT NO. 970 46 94-01



05.08.021-A

Ref.	Part No.	Description
1	501 65 66-03	CABLE CONTROL DRIVE
2	579 76 36-01	CABLE CONTROL AUGER
3	598 45 04-01	CABLE CONTROL SPEED
4	532 19 79-91	CLIP CABLE
5	532 42 81-24	FASTENER PUSH .250

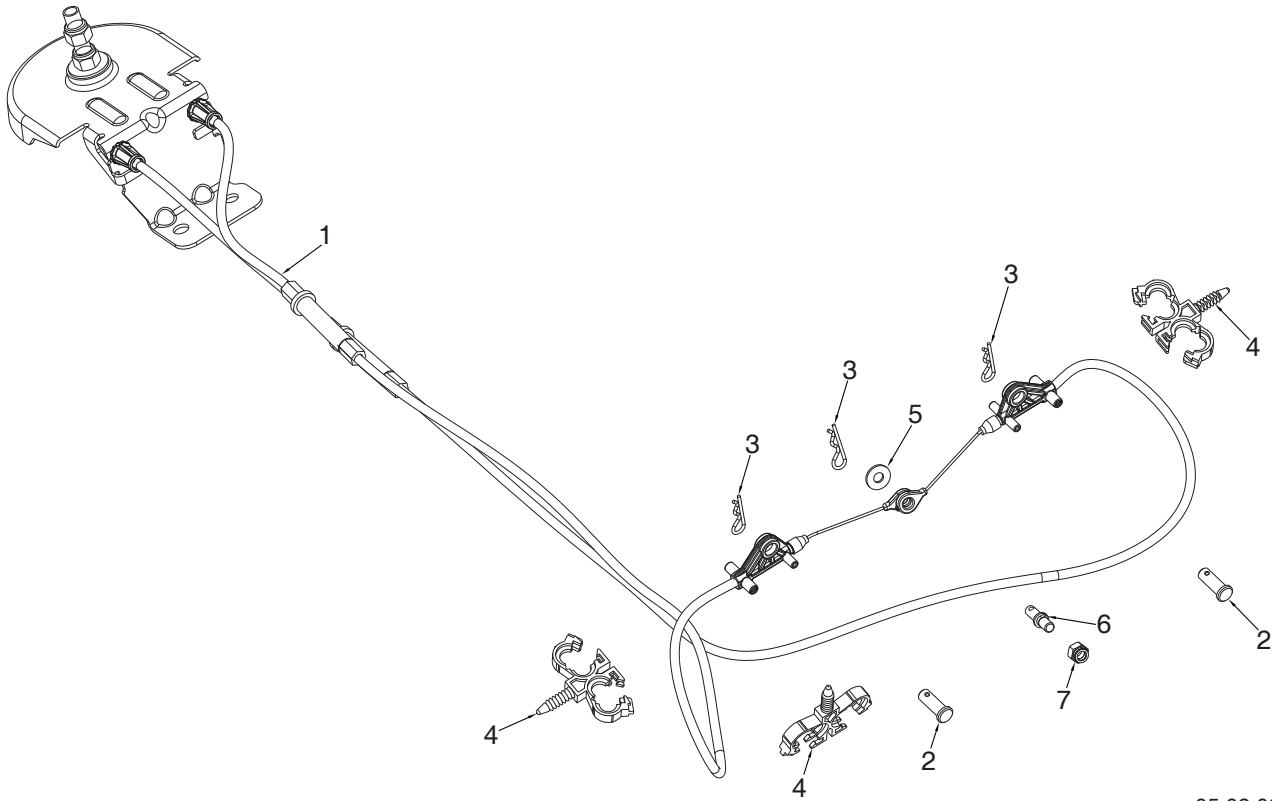
Ref.	Part No.	Description
6	581 32 94-01	PIN CLEVIS 5/16
7	532 42 33-03	HAIRPIN
8	585 80 83-01	PIN CLEVIS 1/4
9	589 26 52-01	CABLE COVER
10	594 94 44-01	5/16-18 HEX NUT
11	594 71 65-01	AUGER SPRING

NOTE: All component dimensions given in U.S. inches. 1 inch = 25.4 mm
IMPORTANT: Use only Original Equipment Manufacturer (O.E.M.) replacement parts. Failure to do so could be hazardous, damage your snow thrower and void your warranty.

REPAIR PARTS

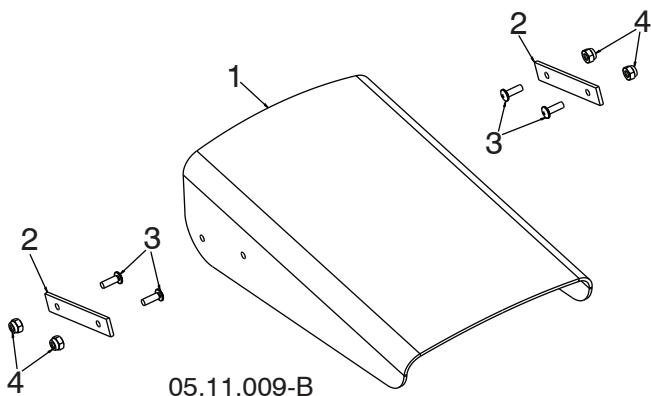
CONTROL PANEL / DISCHARGE CHUTE

SNOW THROWER - MODEL NO. ST327 (97046940100), PRODUCT NO. 970 46 94-01



05.08.022-A

Ref.	Part No.	Description
1	598 80 34-01	CABLE ROTATOR ASM
2	581 32 94-01	PIN CLEVIS 5/16 X 7/8
3	532 42 33-03	HAIRPIN SOFT ZINC
4	584 65 22-01	CLIP CONDUIT DOUBLE
5	586 68 21-01	WASHER FLAT NYLON
6	596 71 72-01	CLEVIS RIGID PIN 5/16 X 1
7	595 08 66-01	NUT 1/4-20 HEX NYLOC



05.11.009-B

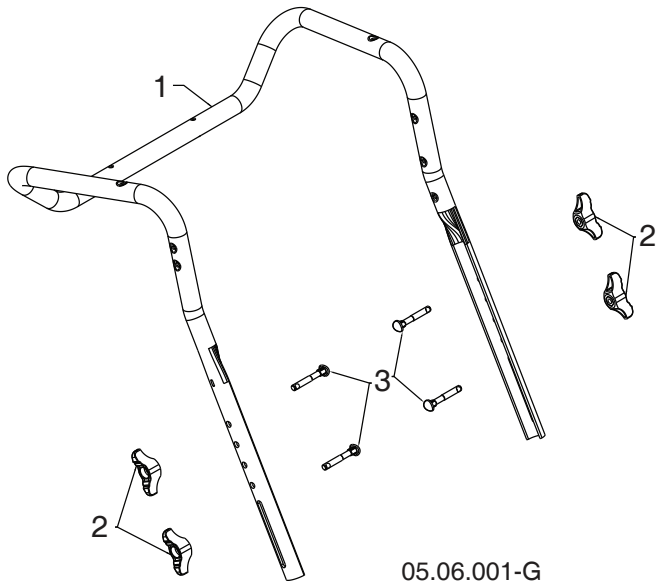
Ref.	Part No.	Description
1	532 42 11-38	SHIELD DEFLECTOR
2	532 42 11-39	STRAP
3	586 11 80-01	SCREW MACHINE 8-32 X .50 - BLK
4	586 11 81-01	NUT HEX NYLOCK 8-32 - BLK

NOTE: All component dimensions given in U.S. inches. 1 inch = 25.4 mm
IMPORTANT: Use only Original Equipment Manufacturer (O.E.M.) replacement parts. Failure to do so could be hazardous, damage your snow thrower and void your warranty.

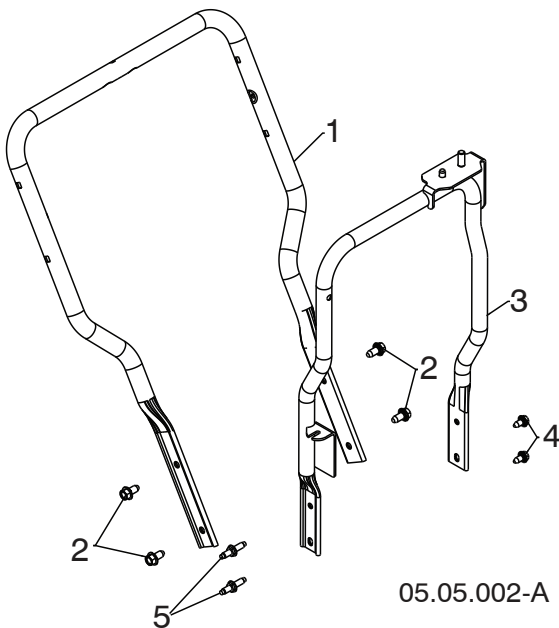
REPAIR PARTS

HANDLES

SNOW THROWER - MODEL NO. ST327 (97046940100), PRODUCT NO. 970 46 94-01



Ref.	Part No.	Description
1	588 16 08-03	UPPER HANDLE
2	532 19 19-38	HANDLE KNOB STD BLACK
3	588 05 99-01	SCREW 5/16-18 X 2.25 CONCAVE HEAD WITH PATCH



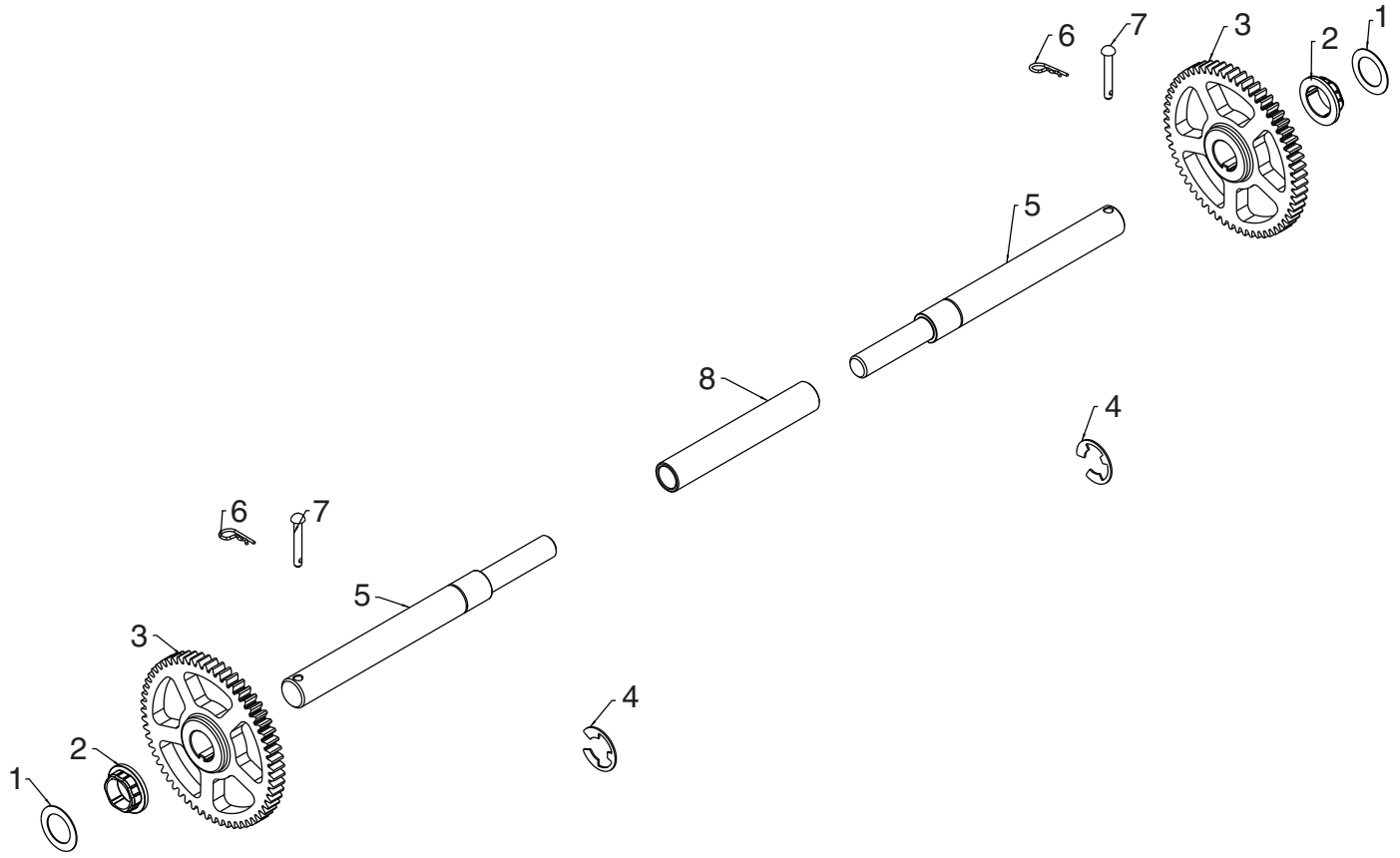
Ref.	Part No.	Description
1	588 67 21-03	LOWER HANDLE
2	817 00 06-12	SCREW HEX WASH HD 3/8-16 X .75
3	589 26 45-02	CHUTE ROTATOR SUPPORT ASM
4	817 00 05-10	BOLT HEX 5/16-18
5	582 91 79-01	STUD - BOLTED HEX HEAD

NOTE: All component dimensions given in U.S. inches. 1 inch = 25.4 mm
IMPORTANT: Use only Original Equipment Manufacturer (O.E.M.) replacement parts.
 Failure to do so could be hazardous, damage your snow thrower and void your warranty.

REPAIR PARTS

DRIVE

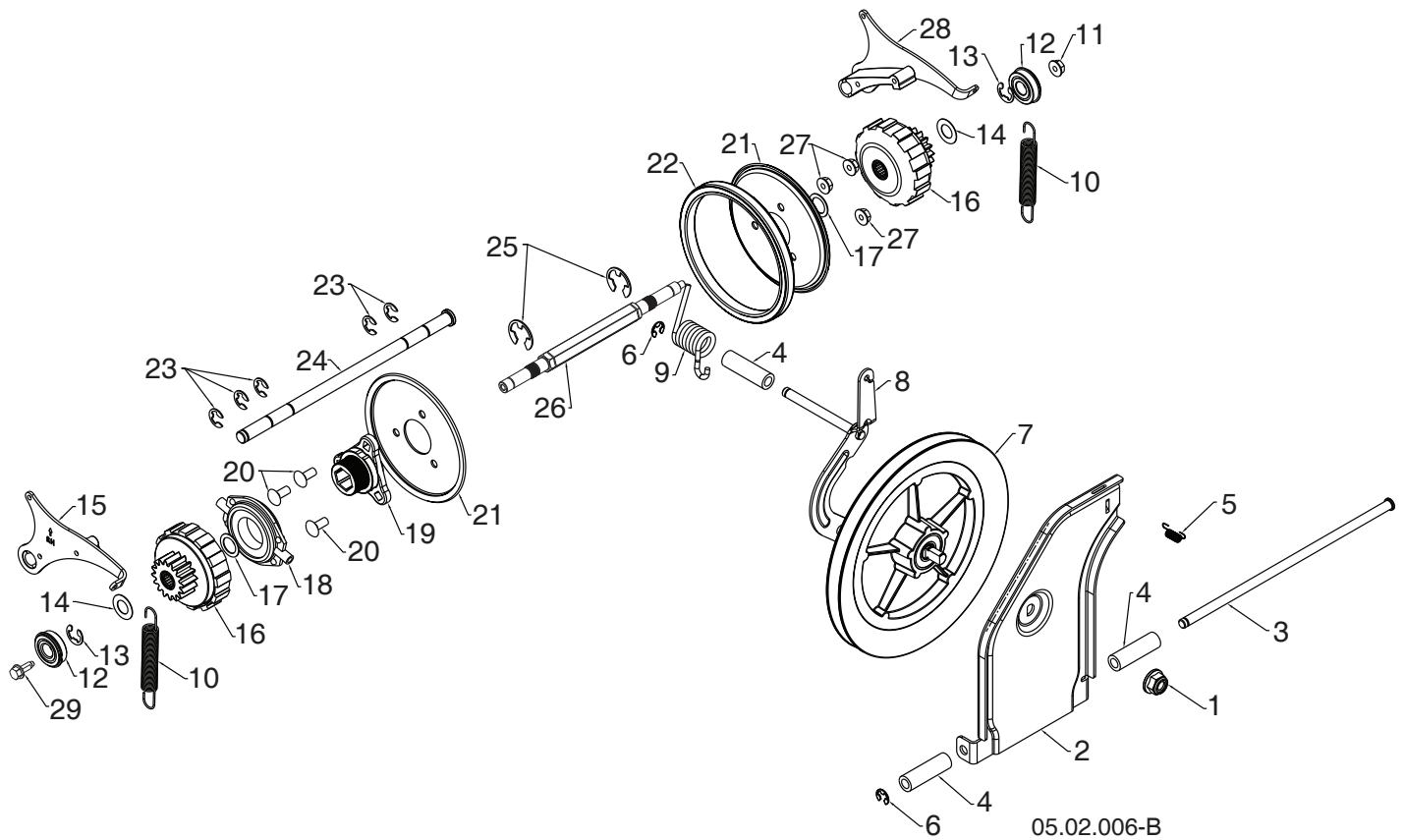
SNOW THROWER - MODEL NO. **ST327** (97046940100), PRODUCT NO. 970 46 94-01



05.03.002-B

Ref.	Part No.	Description
1	532 44 49-49	WASHER 1.00
2	587 97 89-01	BUSHING HEX 1 SHAFT
3	588 51 86-01	GEAR 59T DRIVEN
4	812 00 00-53	RETAINING RING
5	580 75 26-01	AXLE SHAFT SPLIT
6	532 12 47-88	RETAINER SPRING 1 ZINC
7	532 17 12-71	RIVET RD HD DRILLED 1/4 DIA
8	580 75 25-01	AXLE SLEEVE

NOTE: All component dimensions given in U.S. inches. 1 inch = 25.4 mm
IMPORTANT: Use only Original Equipment Manufacturer (O.E.M.) replacement parts. Failure to do so could be hazardous, damage your snow thrower and void your warranty.



Ref.	Part No.	Description
1	521 99 11-02	NUT HEX FLANGE LK 1/2-13
2	592 72 33-02	TIP PLATE FRICTION PULLEY
3	581 12 30-02	ROD TIP PLATE
4	581 73 27-01	SPACER DRIVE
5	532 19 38-85	LATCH SPRING
6	595 84 11-01	E-RING RETAINER
7	581 32 84-02	TEXTURED DRIVE PULLEY ASSEMBLY
8	587 19 34-03	BRACKET YOKE ASSEMBLY
9	581 31 53-01	SPRING TORSION DRIVE
10	585 26 38-01	EXTENSION SPRING
11	585 69 15-01	NUT HEX FLANGE LOCK 5/16-18
12	580 75 62-01	BEARING 9/16 I.D. 1622-2RSNR
13	580 75 61-02	RETAINING RING 1622-2RSNR
14	580 75 13-01	WASHER FLAT .59 I.D. X 1.065 X 25 GA

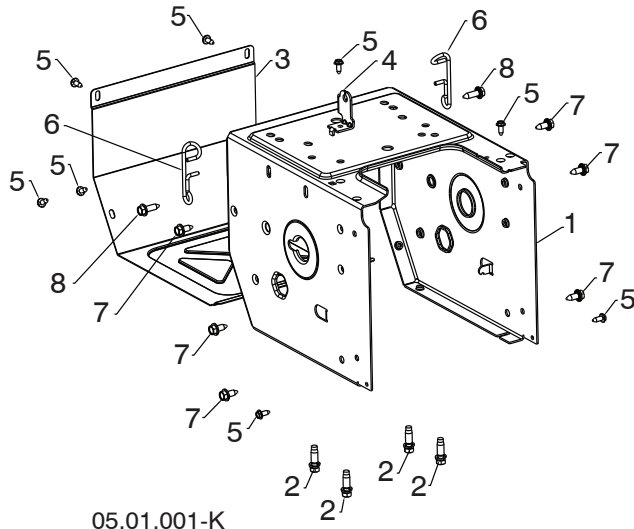
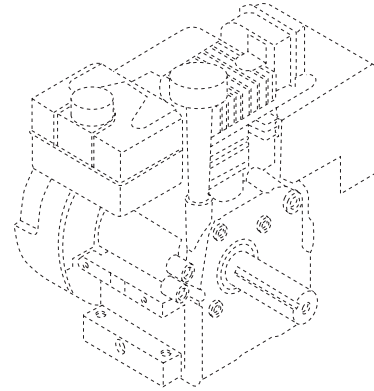
Ref.	Part No.	Description
15	580 75 66-01	PAWL ASM RH
16	580 75 60-01	GEAR ASM PLANETARY
17	580 75 63-01	WASHER FLAT .6875 I.D. X 1.00 X 21 GA
18	597 41 28-01	TRUNNION BEARING
19	581 09 09-01	HUB RUBBER WHEEL
20	872 05 05-06	BOLT CARRIAGE 5/16-18 X .75
21	581 09 10-02	PLATE RUBBER WHEEL
22	597 36 28-01	FRICTION DRIVE RUBBER RING
23	586 64 43-01	E-RING
24	580 75 51-01	ROD PAWL
25	812 00 00-22	E-RING
26	596 67 09-01	HEX REDUCTION PS DOUBLE THREAD
27	532 75 11-53	NUT HEX FLANGE LK 5/16-18
28	580 75 67-01	PAWL ASM LH
29	595 51 77-01	5/16-18 MATHREAD HEX HEAD

NOTE: All component dimensions given in U.S. inches. 1 inch = 25.4 mm
IMPORTANT: Use only Original Equipment Manufacturer (O.E.M.) replacement parts. Failure to do so could be hazardous, damage your snow thrower and void your warranty.

REPAIR PARTS

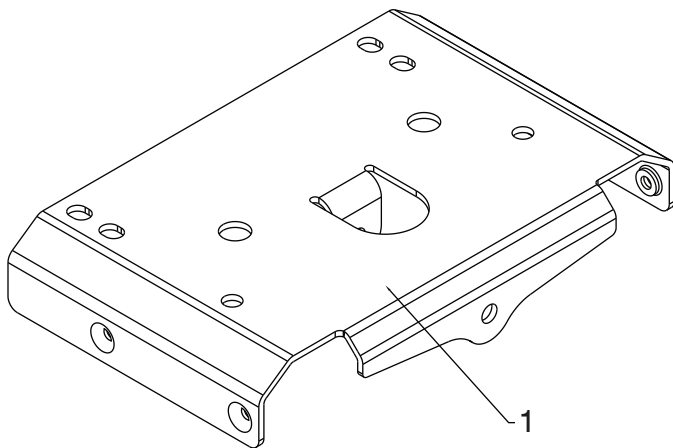
CHASSIS / ENGINE / PULLEYS

SNOW THROWER - MODEL NO. ST327 (97046940100), PRODUCT NO. 970 46 94-01



05.01.001-K

Ref.	Part No.	Description
--	596 95 90-01	COMPLETE LCT ENGINE PWBHK18850178E
1	589 26 47-05	FRAME
2	532 15 04-06	ENGINE BOLT 3/8-16 X 1.280 DOG- POINT
3	580 83 95-05	FRAME COVER
4	501 06 04-03	SHIFTER BRACKET
5	582 90 69-01	SCREW HEX WASHER 1/4-20 X .625
6	588 95 45-01	WIREFORM SUPPORT CABLE
7	532 42 88-67	BOLT HEXHD WASHER 5/16-18 X .750
8	593 33 72-01	BOLT HEXHD WASHER 5/16-18 X 1.000



05.01.003-A

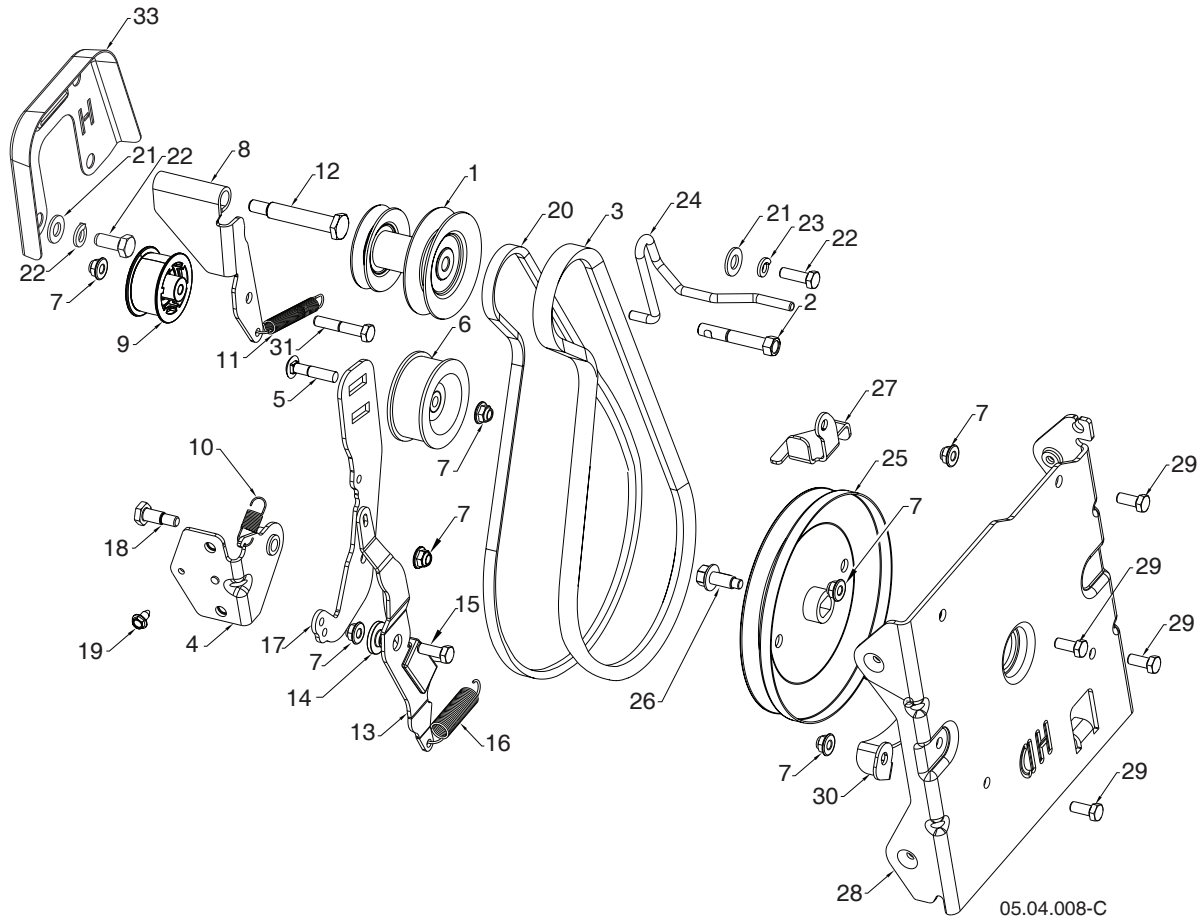
Ref.	Part No.	Description
1	585 54 60-02	LARGE MOUNTING PLATE

NOTE: All component dimensions given in U.S. inches. 1 inch = 25.4 mm
IMPORTANT: Use only Original Equipment Manufacturer (O.E.M.) replacement parts.
 Failure to do so could be hazardous, damage your snow thrower and void your warranty.

REPAIR PARTS

CHASSIS / ENGINE / PULLEYS

SNOW THROWER - MODEL NO. ST327 (97046940100), PRODUCT NO. 970 46 94-01



Ref.	Part No.	Description
1	589 26 22-01	PULLEY - ENGINE
2	582 38 84-01	BOLT
3	589 26 26-02	BELT - 5L
4	589 26 34-02	BRACKET - WELDMENT, IDLER ARM
5	589 28 45-01	BOLT - 5/16-18 CARRIAGE
6	589 26 27-02	PULLEY - IDLER
7	594 94 44-01	NUT
8	593 19 25-02	ARM - WELDMENT, IDLER
9	581 14 14-02	PULLEY - IDLER FLANGE 2.00
10	589 26 37-01	SPRING - IDLER RETURN
11	580 75 30-01	SPRING
12	581 41 38-01	BOLT
13	579 76 33-01	ARM - IMPELLER BRAKE HD
14	587 34 37-01	BUSHING
15	596 32 22-01	BOLT
16	579 76 35-01	SPRING - EXTENSION - BRAKE
17	589 26 29-02	ARM - IDLER
18	589 26 36-01	SCREW - HEX HEAD SHOULDER

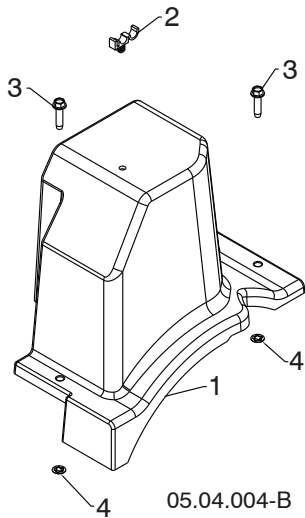
Ref.	Part No.	Description
19	817 06 04-08	SCREW
20	582 64 07-02	BELT - 3L
21	596 20 41-01	WASHER
22	874 61 05-12	SCREW
23	596 23 88-01	WASHER
24	597 20 76-01	GUIDE - BELT - 3L FRICTION, 5L IMPELLER
25	589 26 38-01	PULLEY - IMPELLER.DD.5L.HD
26	595 51 79-01	SCREW - FLANGE HEAD CAP WITH DOG POINT, 3/8-16
27	589 26 25-05	GUIDE - BELT 5L
28	501 59 54-02	INTERFACE BRACKET
29	596 03 05-01	SCREW
30	581 63 20-02	LOWER BELT KEEPER
31	874 76 05-28	SCREW - 5/16-18 X 1.75
32	874 61 05-16	SCREW - 5/16-24 X 1.0
33	598 71 20-02	HC FRICTION DRIVE GUTTER COVER

NOTE: All component dimensions given in U.S. inches. 1 inch = 25.4 mm
IMPORTANT: Use only Original Equipment Manufacturer (O.E.M.) replacement parts.
 Failure to do so could be hazardous, damage your snow thrower and void your warranty.

REPAIR PARTS

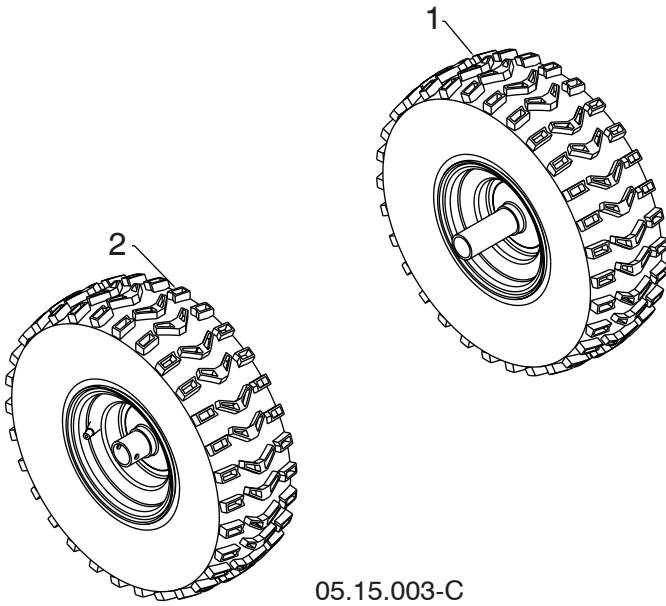
CHASSIS / ENGINE / PULLEYS

SNOW THROWER - MODEL NO. **ST327** (97046940100), PRODUCT NO. 970 46 94-01



Ref.	Part No.	Description
1	587 10 55-01	BELT COVER BLACK ASSEMBLY (INCLUDES 3 & 4)
2	532 14 50-06	CABLE GUIDE
3	-----	BOLT HEX WSH THDRL 1/4-20 X 1
4	-----	PALNUT 1/4 IN

NOTE: All component dimensions given in U.S. inches. 1 inch = 25.4 mm
IMPORTANT: Use only Original Equipment Manufacturer (O.E.M.) replacement parts. Failure to do so could be hazardous, damage your snow thrower and void your warranty.



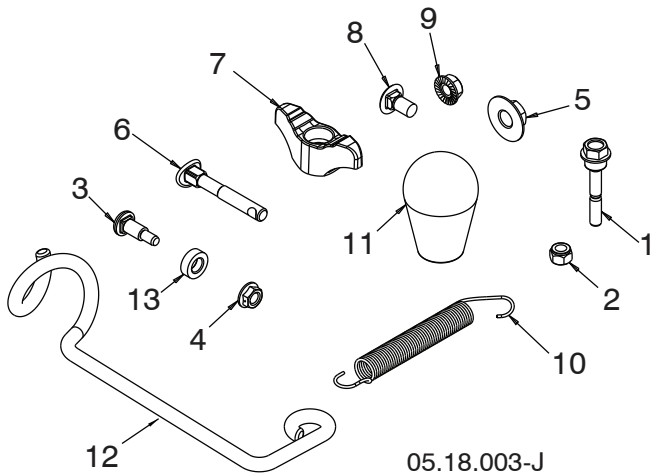
Ref.	Part No.	Description
1	586 71 04-01	WHEEL 15X5.00 NPS LH 1.00 K478
2	586 71 03-01	WHEEL 15X5.00 NPS RH 1.00 K478

NOTE: All component dimensions given in U.S. inches. 1 inch = 25.4 mm
IMPORTANT: Use only Original Equipment Manufacturer (O.E.M.) replacement parts.
Failure to do so could be hazardous, damage your snow thrower and void your warranty.

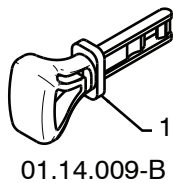
REPAIR PARTS

BAG OF PARTS

SNOW THROWER - MODEL NO. **ST327** (97046940100), PRODUCT NO. 970 46 94-01



Ref.	Part No.	Description
1	588 07 75-02	BOLT 1/4-20 X 1.81
2	595 08 66-01	NUT NYLOCK 1/4-20
3	501 41 73-01	BOLT SHOULDER
4	585 69 14-01	NUT HEX FL 1/4-20 CTR
5	585 69 10-01	NUT NYLOCK 3/8-16
6	588 05 99-01	BOLT 5/16-18 X 2.25 CONCAVE
7	532 19 19-38	KNOB 5/16-18 TWO-WING
8	585 83 20-01	BOLT 5/16-18 X .625
9	873 97 05-00	NUT SERR FL LOCK 5/16-18
10	532 18 45-05	SPRING DEFLECT CHUTE
11	581 69 75-01	KNOB SOFT TOUCH SLOTTED
12	596 97 68-01	SUPPORT ROTATION CABLE
13	501 41 74-01	WASHER NYLON



Ref.	Part No.	Description
1	532 44 30-59	SAFETY IGNITION KEY KIT

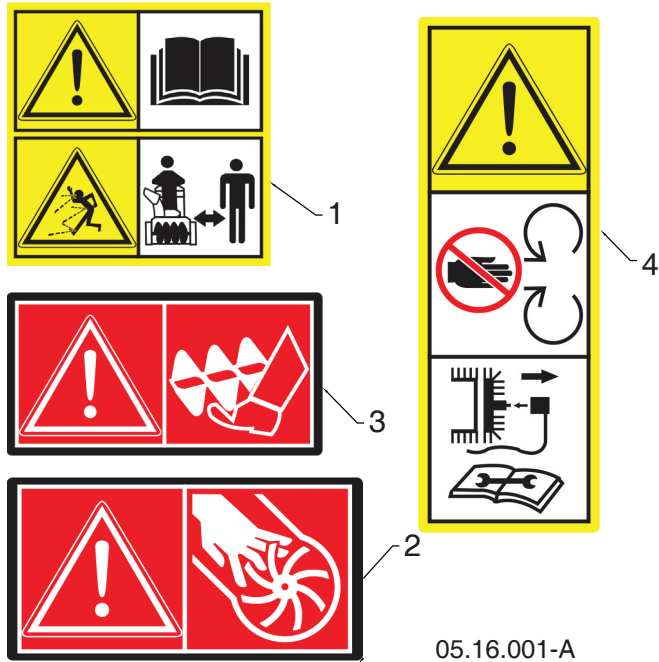
01.14.009-B

NOTE: All component dimensions given in U.S. inches. 1 inch = 25.4 mm
IMPORTANT: Use only Original Equipment Manufacturer (O.E.M.) replacement parts. Failure to do so could be hazardous, damage your snow thrower and void your warranty.

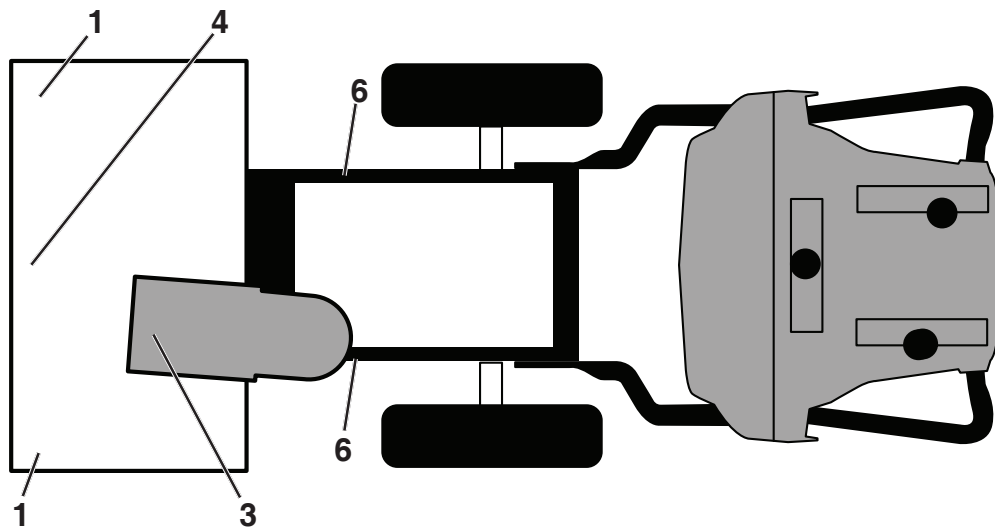
REPAIR PARTS

DECALS

SNOW THROWER - MODEL NO. ST327 (97046940100), PRODUCT NO. 970 46 94-01



Ref.	Part No.	Description
1	532 18 40-45	DECAL AUGER
2	590 81 22-01	DECAL CHUTE
3	532 19 96-83	DECAL AUGER SAFETY
4	532 18 40-28	DECAL BELT GUIDE



Ref.	Part No.	Description
1	532 19 96-83	DECAL, DANGER
3	590 81 22-01	DECAL, DANGER, DEFLECTOR
4	532 18 40-45	DECAL, DANGER
6	532 18 40-28	DECAL
7	593 09 65-01	DECAL, CANADA IGNITION

Ref.	Part No.	Description
--	590 69 72-01	DECAL, ENG. RECOIL (NOT SHOWN)
--	593 09 64-01	DECAL, AUGER HOUSING
--	532 42 86-77	"H" EMBLEM (NOT SHOWN)
--	114 22 64-49	OPERATOR'S MANUAL, ENGLISH, FRENCH, SPANISH

NOTE: All component dimensions given in U.S. inches. 1 inch = 25.4 mm
IMPORTANT: Use only Original Equipment Manufacturer (O.E.M.) replacement parts. Failure to do so could be hazardous, damage your snow thrower and void your warranty.

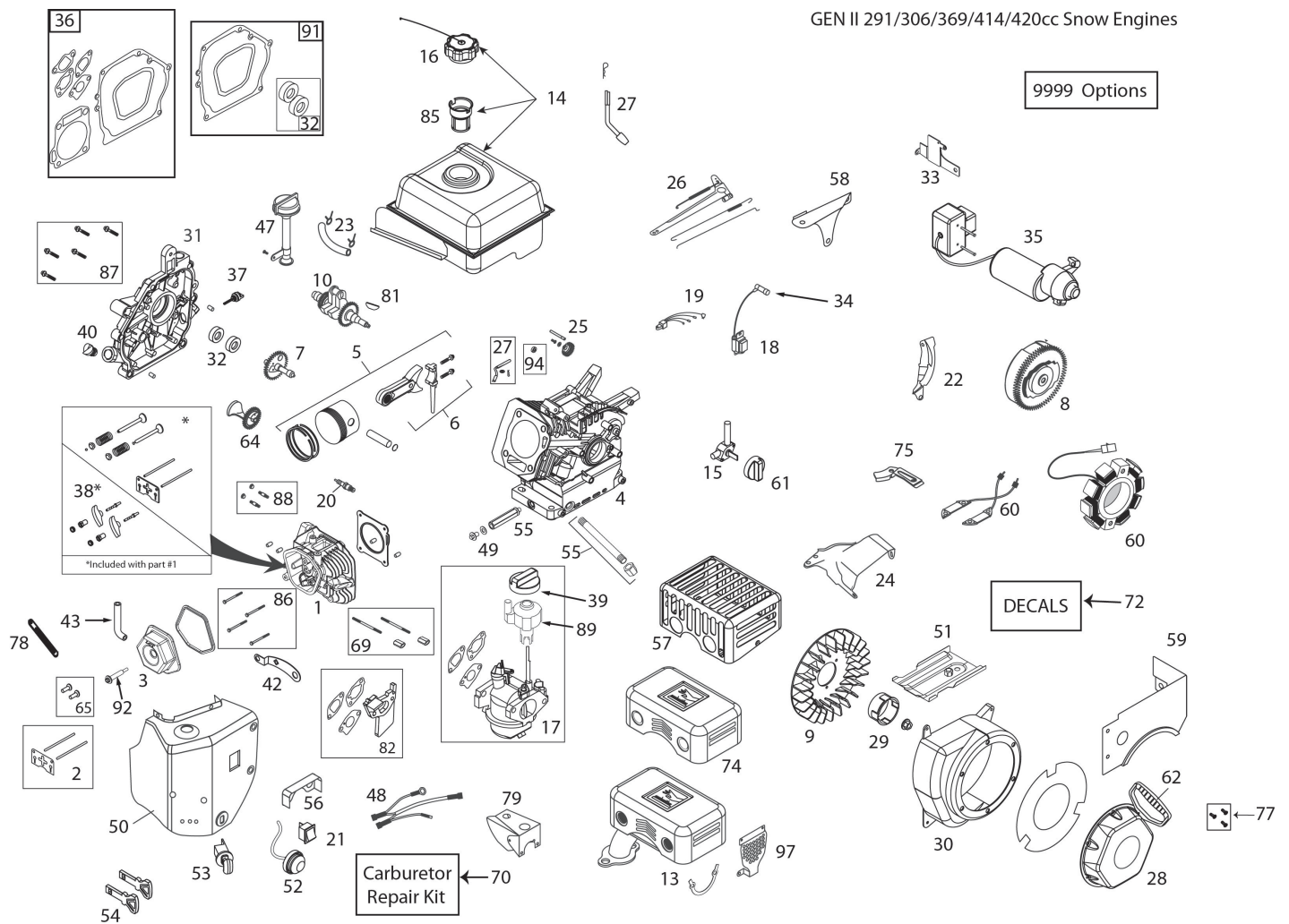


ILLUSTRATION FOR REFERENCE PURPOSES ONLY

Ref.	Part No.	Description
1	532 42 92-54	Cylinder Head Assy (incl. Gasket)
2	532 42 96-13	Push Rod & Plate Kit (incl. valve cover gskt)
3	532 42 93-03	Valve Cover (incl. Gasket)
5	532 42 92-58	Piston & Rod Assembly
7	532 42 92-53	Camshaft
8	532 44 38-95	Flywheel - Electric Start
9	532 42 92-38	Cooling Fan - Flywheel
10	590 92 22-01	Crankshaft
13	587 19 87-01	Quiet Muffler
14	532 43 48-89	Fuel Tank (w/Plastic Cap)
15	532 42 92-34	Fuel Tank On/Off Valve
16	532 42 92-11	Fuel Tank Cap

Ref.	Part No.	Description
17	587 12 46-01	Carburetor (w/idle-down)
18	532 44 38-97	Ignition Coil
20	532 42 49-39	Spark Plug
23	532 43 21-46	Fuel Hose Kit
24	597 67 05-01	Speed Control Bracket (Fixed)
25	532 42 92-92	Governor Gear Assembly
26	532 42 92-48	Governor Arm & Link Kit
27	532 42 92-50	Governor Arm Paddle
28	582 62 11-01	Recoil Starter - JPC
29	582 62 13-01	Starter Cup (JPC)
30	582 62 12-01	Blower Hsg
31	597 67 06-01	Crankcase Cover Assy (2-Low Fills)

NOTE: All component dimensions given in U.S. inches. 1 inch = 25.4 mm
IMPORTANT: Use only Original Equipment Manufacturer (O.E.M.) replacement parts. Failure to do so could be hazardous, damage your snow thrower and void your warranty.

ENGINE, LCT

Ref.	Part No.	Description
32	532 42 92-83	Oil Seal Kit
33	587 14 28-01	Electric Starter Switchbox Bracket
34	532 43 69-66	Spark Plug Boot - with metal shield
35	532 42 92-20	120V Electric Starter
36	532 42 96-15	Engine Gasket Kit
37	532 43 55-34	Small Black Oil Dipstick (Plastic)
38	532 42 96-12	Rocker Arm Kit (incl. gasket)
39	532 42 92-24	Choke Control Knob
40	532 42 92-42	Non-Removable Plastic Plug
43	587 17 96-01	Breather Tube
48	595 01 25-01	Wire Harness
50	597 67 09-01	Heater Box Kit
51	532 42 92-31	Shield - Cylinder
52	532 42 92-18	Primer Bulb With Hose
53	532 42 92-21	Safety Key Switch w/Keys
54	532 44 30-59	Key Set - Red (2)
55	587 13 99-01	Oil Drain Tube with Cap Nut
56	See Ref 58	Combined with ref 58
58	597 67 10-01	Gov and Carb Shield
59	582 62 14-01	Fuel Tank Skirt
60	532 44 38-96	Charging Coil (60-watt AC)
61	532 43 27-52	Fuel Control Knob
62	532 44 38-99	Starter Grip-Snow

COMPLETE ENGINE-596959001

Ref.	Part No.	Description
65	581 37 29-01	Tappet Kit (Set of 2)
69	586 32 66-01	Carburetor Mtg Stud Kit (2)
70	580 35 37-01	Carburetor Repair Kit
72	587 15 22-01	Two Stage Snow Decal Kit
74	587 37 53-01	Muffler Heat Shield
75	590 92 25-01	Wire Guard Plate
77	532 43 26-88	Recoil Bolt Kit (3 bolts per kit)
79	See Ref 58	Combined with ref 58
81	585 29 72-02	Woodruff Flywheel Keys
82	585 02 05-02	CARBURETOR SPACER KIT
85	586 32 56-01	Fuel Tank Strainer
86	586 32 74-01	Cylinder Head Bolt Kit (4)
87	586 32 72-01	CC Cover Bolt Kit (7)
88	586 32 68-01	Muffler Mtg Stud Kit (2)
89	587 12 48-01	Speed Control Knob (grey)
91	587 99 41-03	Crankshaft Gasket Kit 291-306cc
92	587 99 52-01	Valve Cover Bolt_with Seal
97	590 04 66-01	Muffler Manifold Shield
9999	586 32 64-01	High Altitude Jet (>6,000 feet)
9999	579 80 64-01	Bolt Kit - Blwr Hgs/Heater Box/Tank Skirt
9999	590 92 08-01	Starter Switch Box Screws
9999	597 67 11-01	Carb Linkage Retention Clip (nylon)

NOTE: All component dimensions given in U.S. inches. 1 inch = 25.4 mm
IMPORTANT: Use only Original Equipment Manufacturer (O.E.M.) replacement parts.
Failure to do so could be hazardous, damage your snow thrower and void your warranty.