

**Repair Parts Manual**  
YTH24V48 / 96045006301



**English**

Please read the operator's manual carefully and make sure you understand the instructions before using the machine.



**529 67 30-01**

# HOW TO USE THIS MANUAL

This manual is designed to provide the customer with a means to identify the parts on his/her tractor when ordering repair parts. The illustrations may or may not represent the actual assemblies; therefore, it is not recommended to use this manual as a guide to assemble or disassemble the tractor. Some hardware and parts are drawn larger in order to more readily identify them.

Each tractor has its own model number. The model number for your tractor can be found on the fender under the seat.

## Support / Help

If you require assistance or have questions concerning the application, operation, maintenance or parts for your product:

- Visit our website: [www.husqvarna.com](http://www.husqvarna.com)
- Call Us Toll Free: 1-800-487-5951

When ordering parts, always give the following information:

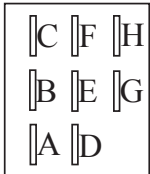
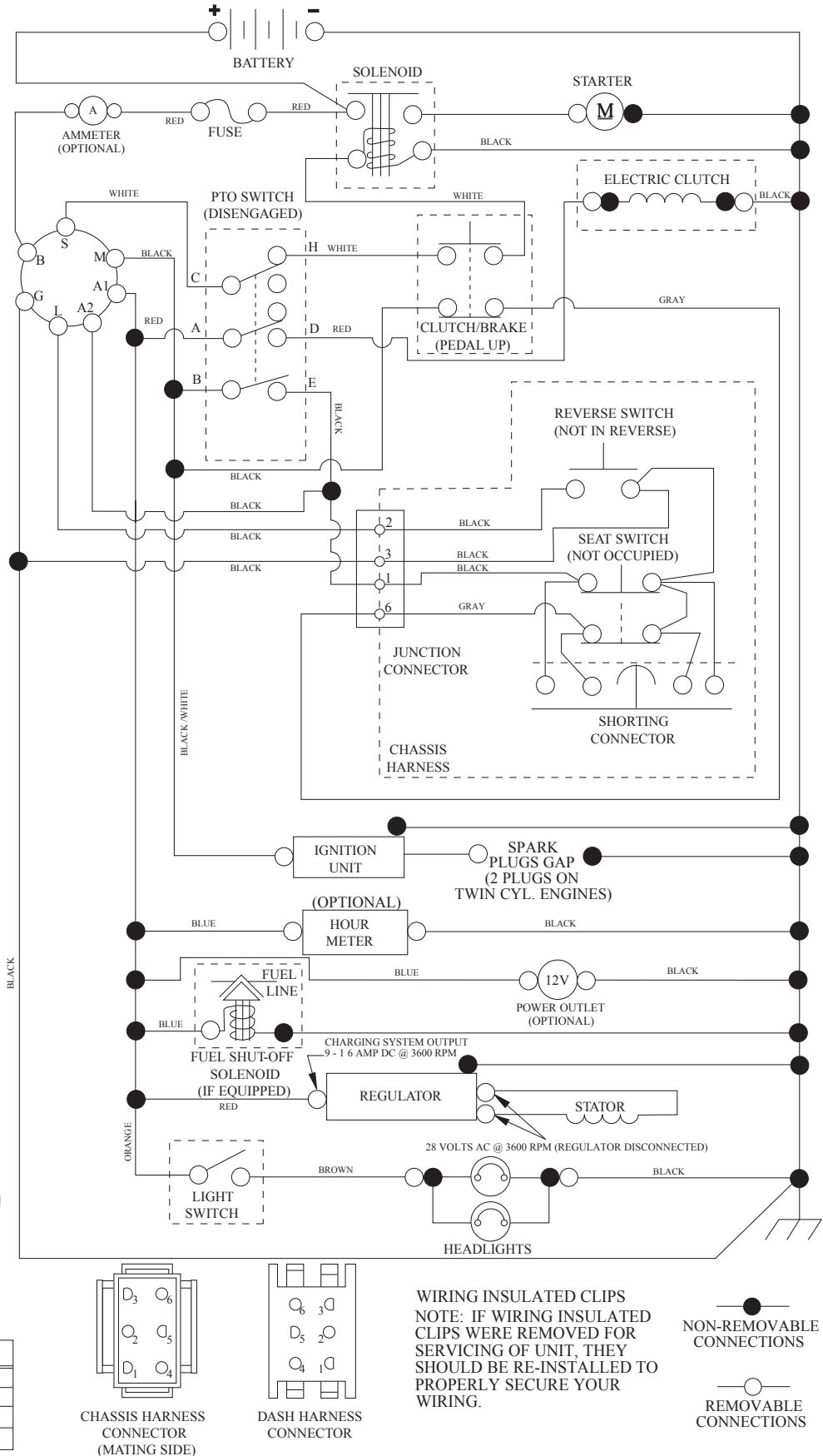
- Product - "TRACTOR"
- MODEL NUMBER - "YTH24V48" (96045006301)"
- Part Number
- Part Description

## TABLE OF CONTENTS

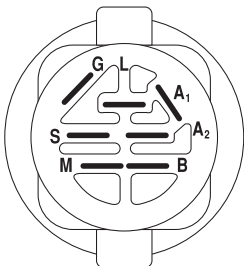
<b>SCHEMATIC .....</b>	<b>3</b>
<b>ELECTRICAL.....</b>	<b>4-5</b>
<b>CHASSIS .....</b>	<b>6-7</b>
<b>DRIVE.....</b>	<b>8-9</b>
<b>ENGINE.....</b>	<b>10-11</b>
<b>STEERING .....</b>	<b>12-13</b>
<b>MOWER DECK.....</b>	<b>14-15</b>
<b>MOWER LIFT.....</b>	<b>16</b>
<b>SEAT .....</b>	<b>17</b>
<b>DECALS.....</b>	<b>18</b>

# TRACTOR - MODEL NO. YTH24V48 (96045006301), PRODUCT NO. 960 45 00-63 SCHEMATIC

SCH12

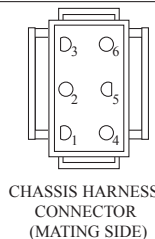


PTO SWITCH  
(MATING SIDE)

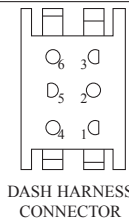


IGNITION SWITCH

POSITION	CIRCUIT	"MAKE"
OFF	M+G+A1	
RUN/OVERRIDE	B+A1	
RUN	B+A1	L+A2
START	B + S + A1	

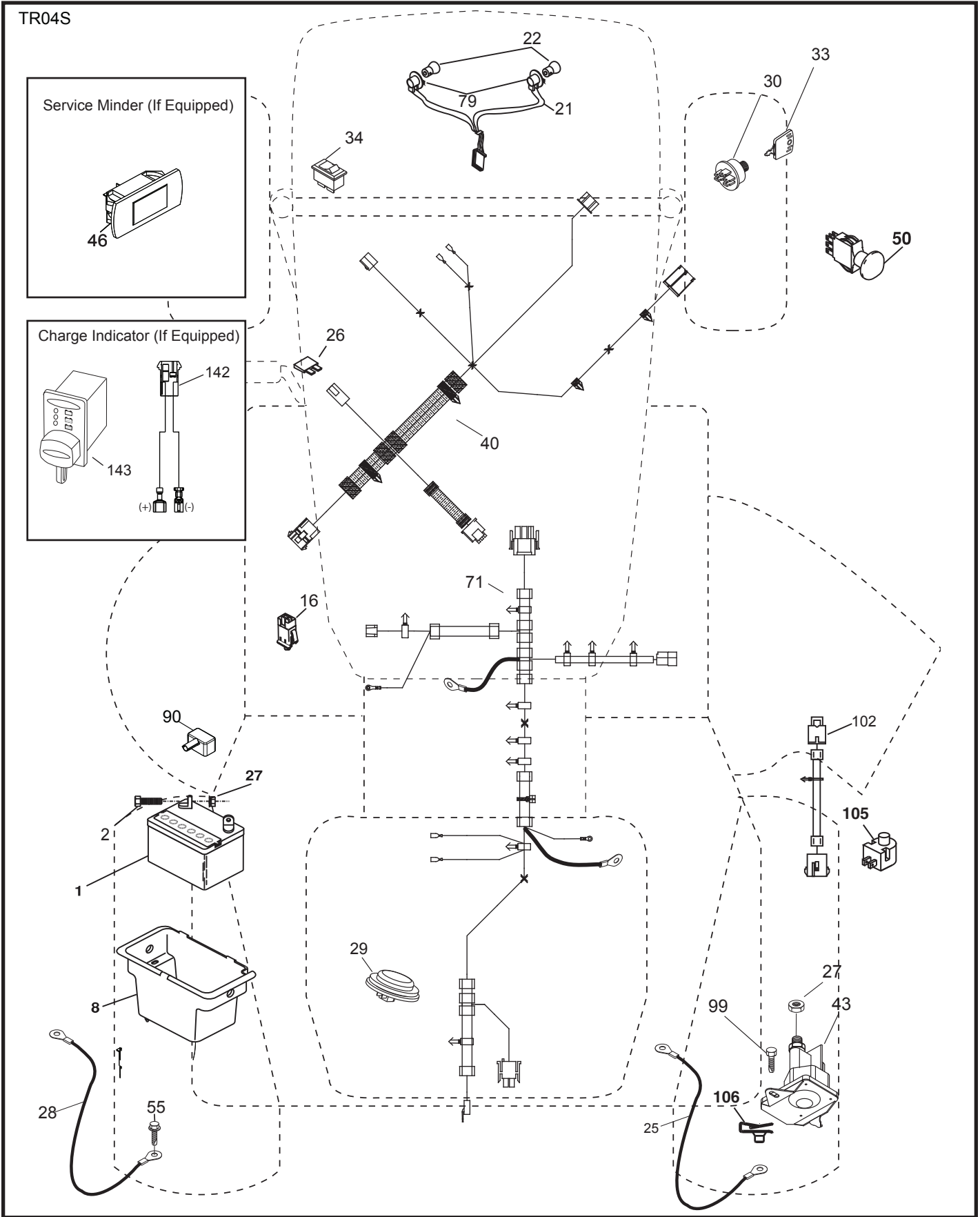


CHASSIS HARNESS  
CONNECTOR  
(MATING SIDE)



DASH HARNESS  
CONNECTOR

**TRACTOR - MODEL NO. YTH24V48 (96045006301), PRODUCT NO. 960 45 00-63  
ELECTRICAL**

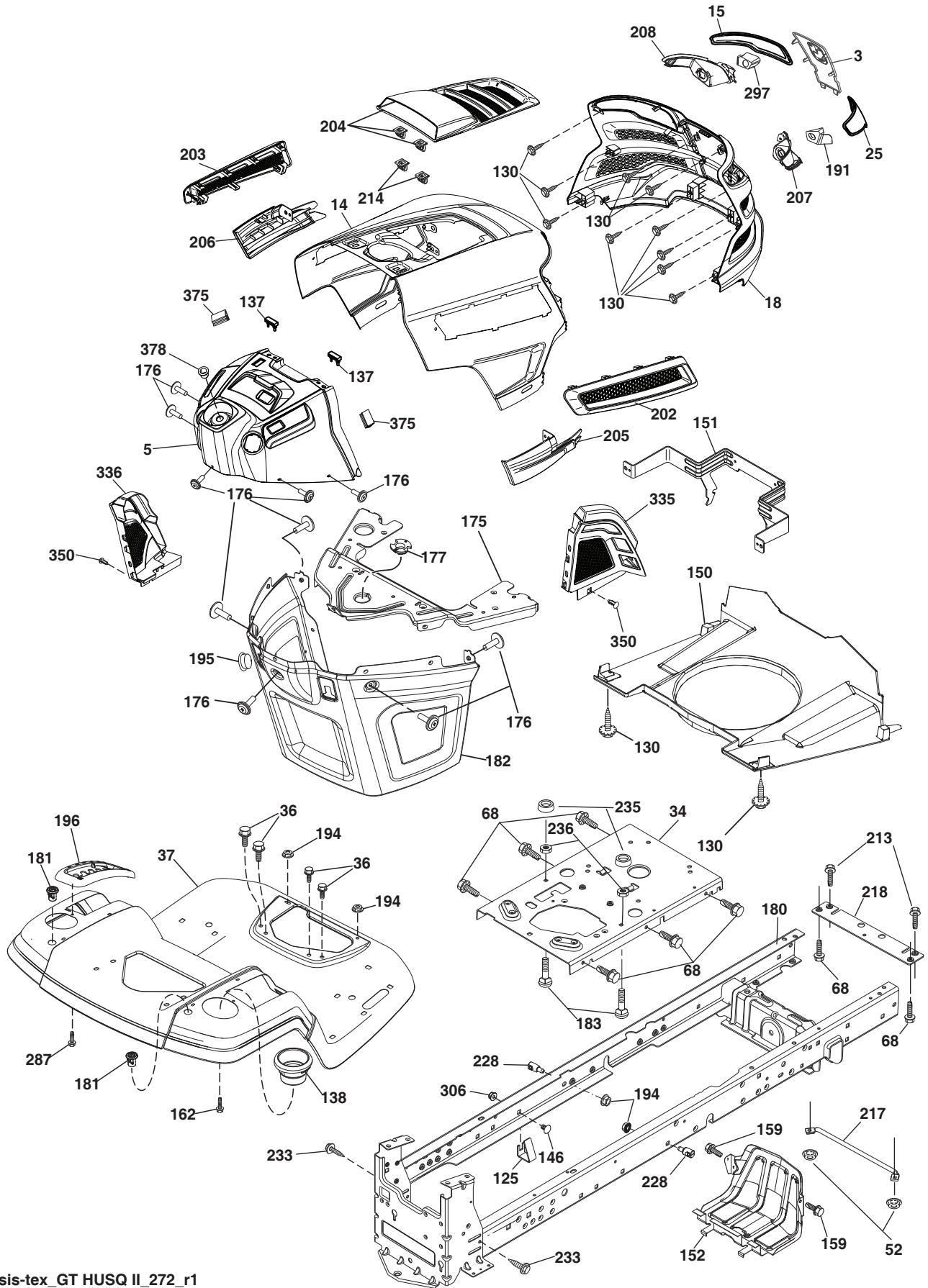


**TRACTOR - MODEL NO. YTH24V48 (96045006301), PRODUCT NO. 960 45 00-63  
ELECTRICAL**

<b>KEY NO.</b>	<b>PART NO.</b>	<b>DESCRIPTION</b>
1	532 16 34-65	Battery
2	874 76 04-12	Bolt Hex Hd 1/4-20 unc x 3/4
8	532 19 32-28	Battery Box
16	532 17 61-38	Switch Interlock
21	532 40 02-52	Harness Socket Light
22	532 00 41-52	Bulb, Light #1156
25	581 49 80-01	Cable Starter
26	532 17 51-58	Fuse
27	596 13 36-01	Locknut, Keps. 1/4-20
28	532 42 16-86	Cable Ground Blk
29	532 40 15-45	Switch Seat
30	532 19 33-50	Switch Ign
33	532 41 19-35	Key/Chain
34	532 11 07-12	Switch Light/Reset
40	581 02 32-01	Harness Ign. Dash
43	582 04 28-02	Solenoid
46	594 91 91-01	Hourmeter Delta
50	582 10 76-02	Switch PTO
55	817 06 05-12	Screw Thdrol 5/16-18 x 3/4
71	501 13 37-01	Harness Ign Chassis
79	532 17 52-42	Socket Asm. Bulb Twistlock
90	532 43 53-95	Cover Terminal Battery
99	817 67 04-12	Screw Hexwsh Thdrol 1/4-20 x 3/4
102	532 40 44-54	Harness Pigtail
105	532 40 75-68	Switch Reverse TT Pedal Control
106	532 17 48-14	Palunt 1/4 Lugs

**NOTE:** All component dimensions given in U.S. inches  
1 inch = 25.4 mm

**TRACTOR - MODEL NO. YTH24V48 (96045006301), PRODUCT NO. 960 45 00-63  
CHASSIS**



chassis-tex\_GT HUSQ II\_272\_r1

**TRACTOR - MODEL NO. YTH24V48 (96045006301), PRODUCT NO. 960 45 00-63  
CHASSIS**

<b>KEY NO.</b>	<b>PART NO.</b>	<b>DESCRIPTION</b>	<b>KEY NO.</b>	<b>PART NO.</b>	<b>DESCRIPTION</b>
3	532 44 44-81	Logo	195	532 40 41-37	Plug Hole Dash Lower
5	590 74 88-21	Dash	196	532 43 96-47	Console Asm. Decklift
14	532 44 11-77	Hood	202	532 43 97-28	Vent Side Hood RH
15	532 43 97-33	Lens LH	203	532 43 97-27	Vent Side Hood LH
18	587 52 34-01	Grille	204	587 48 58-01	Vent Top Hood (includes clips)
25	532 44 33-85	Lens RH	205	532 43 97-30	Trim Hood Side RH
34	580 91 08-01	Plate Engine	206	532 43 97-29	Trim Hood Side LH
36	817 06 05-12	Screw 5/16-18 x 3/4	207	587 46 48-01	Bezel RH
37	532 44 12-06	Fender	208	587 46 45-01	Bezel LH
52	596 04 05-01	Nutlock, Hex. Prvl. 5/16-18	213	596 03 05-01	Bolt, Hex. Hd. 5/16-18 unc x 3/4
68	596 03 07-01	Screw, Hexagon, 5/16-18 x 1/2	214	532 19 91-45	Clip Retainer Tinner
125	581 68 48-01	Clip Fuel Line	217	532 40 91-67	Rod Pivot
130	596 32 17-01	Screw, #10 x 0.750 BOS Thread	218	532 19 63-95	X-Piece Hood Stop
137	532 40 75-90	Bumper Dash	228	593 82 40-01	Stud, W/"D" Anti-Rotation
138	532 40 97-30	Cupholder	233	532 19 65-39	Bolt, Shoulder
146	581 85 79-01	Bolt RDHD SHT SQNK 3/8-16 5/8	235	596 56 42-01	Spacer, Fender, Clr. Zn
150	532 43 97-74	Air Duct	236	873 93 05-00	Nut Lock 5/16-18 unc
151	532 43 66-70	Bracket Pivot	287	817 60 04-06	Screw Hex Washhead 1/4-20 x 3/8
152	532 43 98-70	Shield Browning	297	532 43 74-56	Insert Reflective LH
159	817 00 05-12	Screw 3/8-16 3/4	306	873 90 06-00	Nut Lock Flg. 3/8-16 unc
162	596 13 41-01	Screw, Hex. Tap. 1/4-15 x 1/2	335	532 44 82-04	Cover Lower Dash Close Out RH
175	590 60 77-02	Crossmember	336	532 44 53-09	Cover Lower Dash LH
176	532 40 07-76	Screw 10-24 x 5/8	350	532 44 51-43	Clip X-mas Tree
177	532 19 52-28	Bushing Steering	375	586 90 82-01	Dash Clip-On Bumper
180	532 19 54-57	Chassis	378	590 84 98-01	Bushing, Flange, Plastic
181	532 43 97-46	Bushing			
182	532 40 68-59	Dash Lower			
183	595 30 57-01	Screw, Hexagon, 5/16-18 x 1-1/4			
191	532 43 74-55	Insert Reflective RH			
194	596 13 57-01	Nutlock, Prvl, Torq. 5/16-18 x .68			

**NOTE:** All component dimensions given in U.S. inches  
1 inch = 25.4 mm



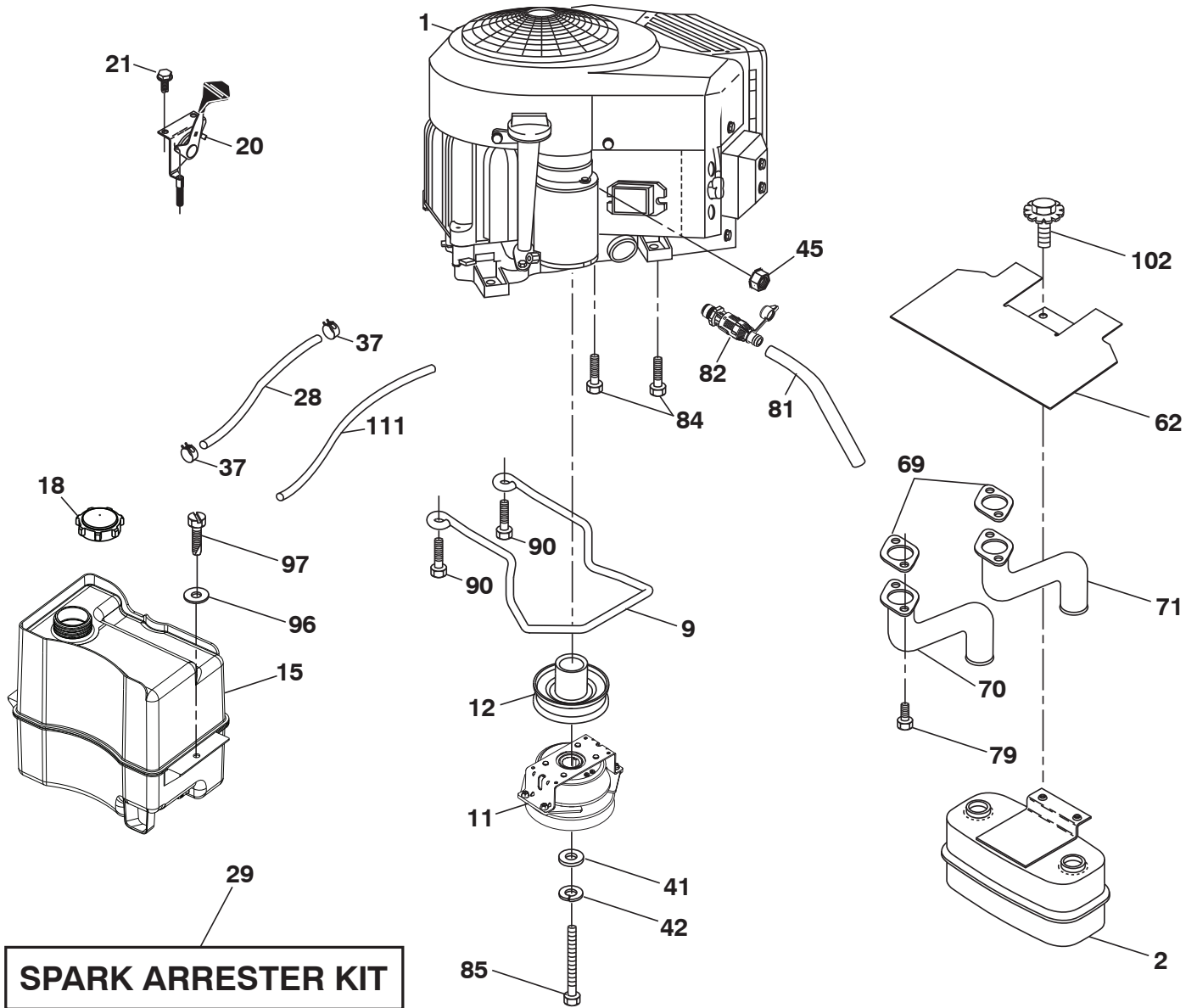


# TRACTOR - MODEL NO. YTH24V48 (96045006301), PRODUCT NO. 960 45 00-63 DRIVE

KEY NO.	PART NO.	DESCRIPTION	KEY NO.	PART NO.	DESCRIPTION
1	---	Transaxle, TUFFTORQ K46 BT (426120) (Order parts from trans-axle manufacturer)	183	532 13 70-57	Spacer Split
2	532 12 35-83	Key	184	587 65 37-01	Handle Parking Brake
15	596 56 53-01	Washer, 3/8 x 0.08 In. St. Clr. Zinc	185	872 11 06-22	Bolt Rdhd Sqnk 3/8-16 x 2-3/4 Gr. 5
17	532 41 36-78	Spring Brake	186	532 19 43-21	Spacer Retainer
26	532 19 96-79	Spring Return Cruise	187	596 13 55-01	Washer, 13/32 x 2 Clear, Zinc
29	532 40 38-06	Rod, Brake	188	582 21 70-01	Link Clutch Ground Drive, Long
33	812 00 00-01	Ring E	189	532 19 43-17	Bellcrank Ground Drive
35	590 60 59-02	Rod Brake Park	190	532 19 43-18	Keeper Bellcrank Ground Drive
37	532 18 89-67	Washer Hardened	196	817 00 06-16	Screw 3/8-16 x 1
42	532 00 88-83	Cover Foot Pedal	197	585 65 86-02	Wireform, Clutch, AntiRotation
49	596 13 62-01	Bolt, Cup Head, 3/8-16 x 3/4	205	532 12 17-48	Washer
50	532 19 43-27	Pulley Idler Flat	206	532 44 85-96	Bracket Mount Cruise
51	873 90 06-00	Lock Nut 3/8-16	207	587 03 14-02	Latch, Cruisecontrol, Tex. Clr.
52	532 19 43-26	Idler V-Groove	208	596 56 41-01	Gear
56	592 85 52-01	V-Belt Drive	209	590 52 78-02	Rod Control Cruise
64	532 19 78-65	Shaft Asm. Pedal Brake Control	210	532 40 09-80	Rocker Asm. Pedal
69	532 42 33-03	Hairpin Soft Zinc .059 x 1.125	211	532 12 01-83	Bushing Brake Shaft
73	596 13 65-01	Bolt, Hex Head, 5/16-18 x 1-1/2	213	532 40 31-19	Knob Control Cruise
92	595 30 57-01	Screw, Hexagon, 5/16-18 x 1-1/4	214	532 42 12-63	Pedal Forward
99	582 40 45-01	Rod Bypass LT K46, K57	215	586 60 65-02	Pedal Reverse
116	596 13 57-01	Nutlock, Prvl. Torq. 5/16-18 x .68	216	532 19 61-31	Bracket Pulley Idler
125	817 00 05-12	Screw 5/16-18 x 3/4	221	532 40 31-87	Retainer Spring Clip Handle
143	596 03 07-01	Screw, Hexagon, 5/16-18 x 1/2	222	879 21 20-10	Washer 21/32 x1-1/4 10 Ga.
153	532 00 44-97	Retainer Spring	223	598 66 26-01	Bolt, T45 5/16-18 x .75 Hexhd. Blk
159	596 02 95-01	Pin, Cotter, 1/8 Dia. x 3/4	225	532 40 33-19	Keeper Belt Trans.
161	532 10 57-09	Spring Return Clutch	227	596 13 59-01	Bolt, Hex. 5/16-18 x 3/4 Clr. Znc
163	593 86 10-01	Rod, Control, K46/K57R	325	585 66 85-02	Bracket
166	532 42 91-64	Nut Push	326	585 67 08-02	Bracket
167	532 40 52-57	Latch Brake Parking	334	585 88 22-02	Sway Rod Bracket
170	532 19 43-22	Keeper Belt Centerspan	336	587 25 96-02	Bolt, 5/16 x 1-3/4 Flanged
171	596 13 63-01	Bolt, Cup Head, 3/8-16 x 2			
177	587 22 53-01	Pin, Cotter, Locking, Bowtie, 1 in.			

**NOTE:** All component dimensions given in U.S. inches  
1 inch = 25.4 mm

TRACTOR - MODEL NO. YTH24V48 (96045006301), PRODUCT NO. 960 45 00-63  
ENGINE



engine-tex\_bs-2cyl\_179

# TRACTOR - MODEL NO. YTH24V48 (96045006301), PRODUCT NO. 960 45 00-63 ENGINE

KEY NO.	PART NO.	DESCRIPTION
1	-----	Engine Briggs Model No. 44N877-0019-G1 (529582001) (Order parts from engine manufacturer.)
2	589 81 87-01	Muffler
9	596 50 15-02	Keeper Belt Engine
11	587 24 16-01	Clutch Electric
12	532 40 50-97	Pulley Engine
15	597 95 45-01	Fuel, Tank, Asm. 2.5 Gal. EPA. 2020
18	587 38 29-01	Cap Fuel
20	587 24 25-01	Control Throttle
21	596 32 17-01	Screw, #10 x 0.750 BOS Thread
28	532 40 11-35	Fuel Line
29	532 13 71-80	Spark Arrester Kit
37	532 12 34-87	Clamp Hose
41	532 12 61-97	Washer 1-1/2 OD x 15/32 ID x .250
42	596 23 89-01	Washer, 7/16 in. Clr. Zn
45	596 13 36-01	Locknut, Keps. 1/4-20
62	532 43 40-17	Shield Heat Muffler
69	532 16 53-91	Gasket
70	581 88 11-01	Tube Exhaust LH
71	581 88 10-01	Tube Exhaust RH
79	596 13 42-02	Screw, Hex. Socket, 5/16-18 x 1
81	532 14 84-56	Tube Drain Oil Easy
82	532 42 82-87	Valve Oil Drain
84	817 06 06-20	Screw 3/8-16 x 1-1/4
85	501 60 66-01	Bolt 7/16-20 x 3.75 Gr. 5
90	817 00 06-16	Screw 3/8-16 x 1
96	596 13 53-01	Washer, Plain, 9/32 x 7/8 Clr. Zn
97	817 67 04-12	Screw Hexwsh Thdrol 1/4-20 x 3/4
102	817 00 05-12	Screw 5/16-18 x 3/4
111	596 94 15-01	Tube, Purge, Fuel

**NOTE:** All component dimensions given in U.S. inches  
1 inch = 25.4 mm

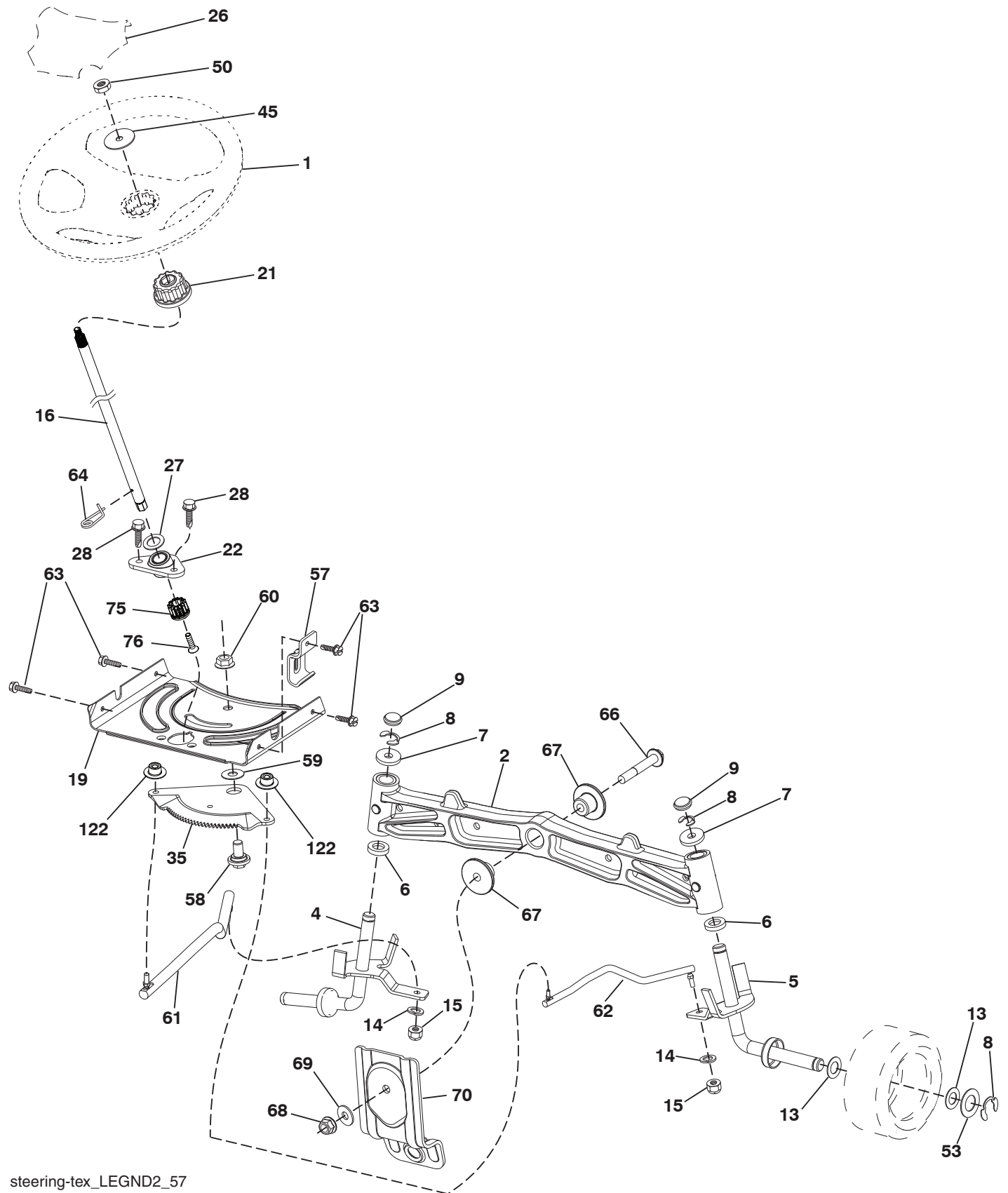
For engine service and replacement parts, call the toll free number for your engine manufacturer listed below:

Briggs & Stratton      1-800-233-3723

## Engine Power Rating Information

The gross power rating for individual gas engine models is labeled in accordance with SAE (Society of Automotive Engineers) code J1940 (Small Engine Power & Torque Rating Procedure), and rating performance has been obtained and corrected in accordance with SAE J1995 (Revision 2002-05). Torque values are derived at 3060 RPM; horsepower values are derived at 3600 RPM. Actual gross engine power will be lower and is affected by, among other things, ambient operating conditions and engine-to-engine variability. Given both the wide array of products on which engines are placed and the variety of environmental issues applicable to operating the equipment, the gas engine will not develop the rated gross power when used in a given piece of power equipment (actual "on-site" or net power). This difference is due to a variety of factors including, but not limited to, accessories (air cleaner, exhaust, charging, cooling, carburetor, fuel pump, etc.), application limitations, ambient operating conditions (temperature, humidity, altitude), and engine-to-engine variability. Due to manufacturing and capacity limitations, Briggs & Stratton may substitute an engine of higher rated power for this Series engine.

**TRACTOR - MODEL NO. YTH24V48 (96045006301), PRODUCT NO. 960 45 00-63**  
**STEERING ASSEMBLY**



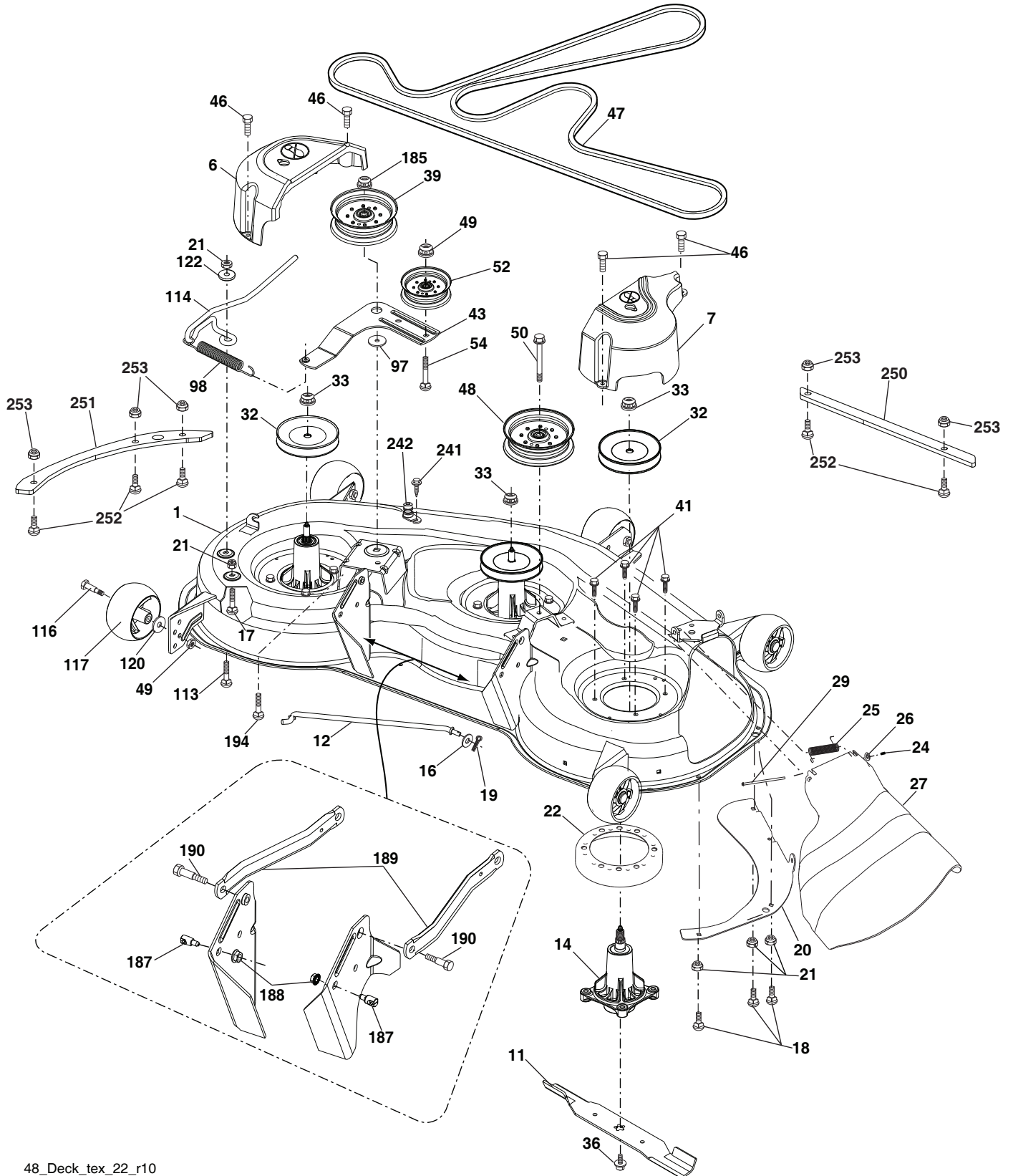
steering-tex\_LEGND2\_57

**TRACTOR - MODEL NO. YTH24V48 (96045006301), PRODUCT NO. 960 45 00-63  
STEERING ASSEMBLY**

<b>KEY NO.</b>	<b>PART NO.</b>	<b>DESCRIPTION</b>
1	532 43 97-40	Wheel, Steering
2	532 19 59-68	Axle Asm., Front
4	532 40 30-87	Spindle Asm., LH
5	532 40 30-88	Spindle Asm., RH
6	532 00 62-66	Washer, Thrust .75 x 1.230
7	532 12 17-48	Washer 25/32 x 1-5/8 x 16 Ga.
8	812 00 00-29	Ring, Clip #T5304-75
9	532 12 12-32	Cap, Spindle
13	532 12 17-49	Washer 25/32 x 1-1/4 x 16 Ga.
14	596 23 87-01	Washer, Spring, Lock, .381 ID x .680
15	873 54 06-00	Nut, Crown Lock 3/8-24 unf
16	587 01 60-02	Steering Shaft
19	532 19 47-29	Plate Steering
21	586 84 02-01	Adapter Wheel Steering
22	585 02 98-02	Bearing
26	532 43 97-43	Insert, Wheel Steering
27	596 93 34-01	Washer, Plain
28	817 00 06-12	Screw 3/8-16 x 3/4
35	532 19 47-32	Gear, Sector Plate
45	587 01 64-01	Washer 3/8 ID 2-3/8 OD 12 Ga. PLTD
50	873 90 06-00	Nut Lock Flg 3/8-16 unc
53	532 18 89-67	Washer Hardened .793 x 1.637 x .060
57	532 19 72-46	Bracket Upstop
58	532 19 47-47	Bolt Shoulder Sector Pivot CFM
59	532 19 47-48	Washer Thrust Sector Steering
60	873 97 10-00	Nut Flange Lock 5/8-11
61	597 04 78-02	Draglink, LH. Ballstud, Std.
62	597 04 79-02	Draglink, RH. Ballstud, Std.
63	817 00 05-12	Screw 5/16-18 x 3/4
64	532 19 98-49	Retainer Clip Spring Steering
66	871 02 07-48	Bolt Hex Fghd 7/16-14 x 3 Serr
67	532 19 47-37	Bushing PM Front Axle
68	873 90 07-00	Nut Lock Flange 7/16-14 Gr. 5
69	532 19 91-62	Washer 1.5 x .505 x .118
70	585 33 88-01	Bracket Deck Susp. Front
75	580 68 37-01	Pinion
76	580 68 36-01	Screw Head Sock
122	532 44 49-62	Cap Gear Sector

**NOTE:** All component dimensions given in U.S. inches  
1 inch = 25.4 mm

**TRACTOR - MODEL NO. YTH24V48 (96045006301), PRODUCT NO. 960 45 00-63**  
**MOWER DECK**



48\_Deck\_tex\_22\_r10

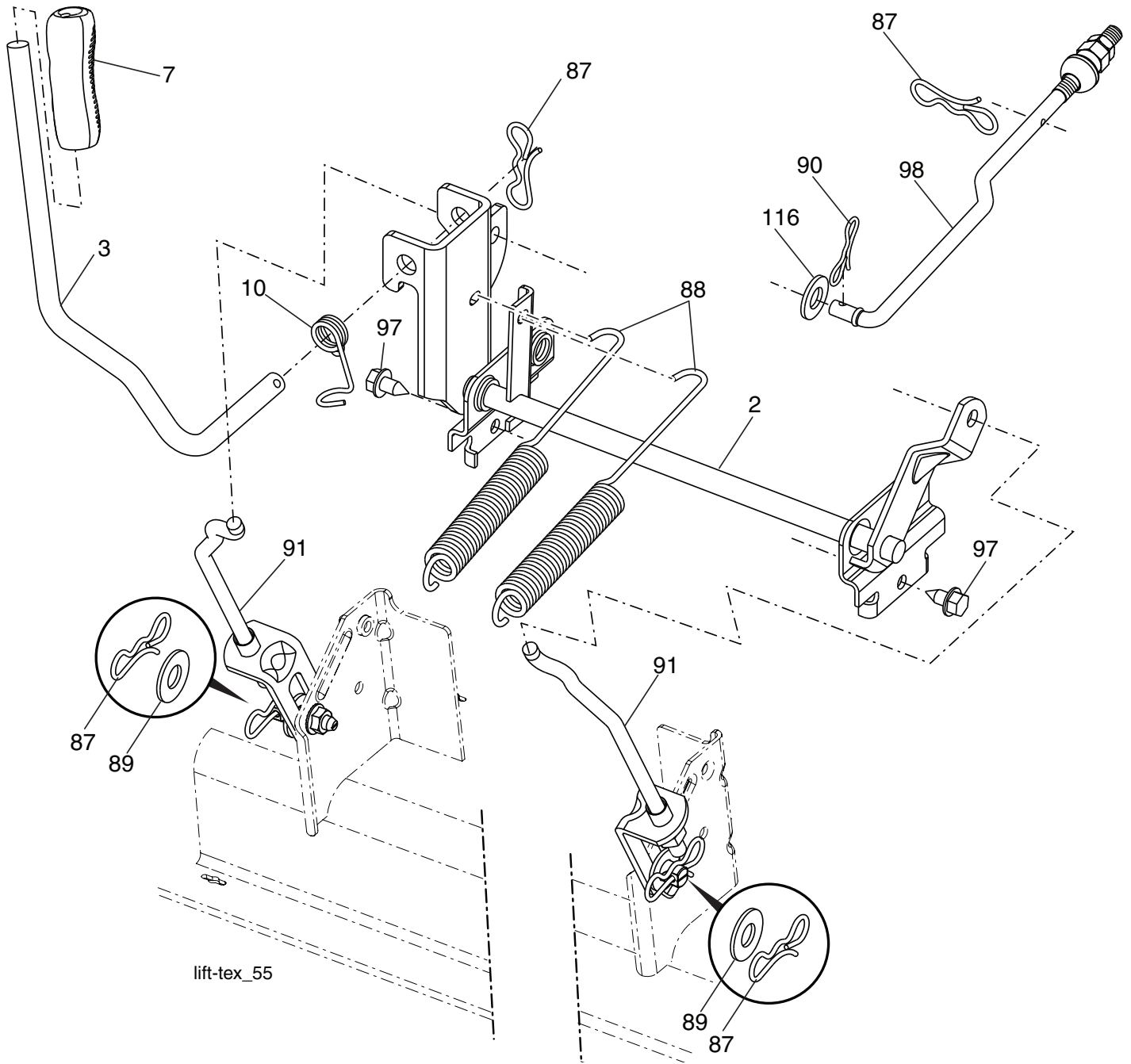
**TRACTOR - MODEL NO. YTH24V48 (96045006301), PRODUCT NO. 960 45 00-63  
MOWER DECK**

<b>KEY NO.</b>	<b>PART NO.</b>	<b>DESCRIPTION</b>	<b>KEY NO.</b>	<b>PART NO.</b>	<b>DESCRIPTION</b>
1	532 41 82-24	Kit SVC Deck Weldment	54	596 13 61-01	Bolt, Cup Head, 3/8-16 x 1-1/2"
6	532 19 72-48	Cover Mandrel LH	97	532 17 85-15	Washer Hardened
7	587 45 24-01	Cover Mandrel RH	98	532 19 61-05	Spring Drive
11	532 18 00-54	Blade High Lift	113	596 43 57-01	Bolt. Sqr. 5/16-18 x 1.02
12	532 40 48-51	Rod Anti-Sway	114	532 19 74-51	Rod Tension Relief
14	587 82 03-01	Kit, Mandrel, Greaseable, Tall (includes mandrel shaft and bolts)	116	596 43 44-04	Bolt, Shoulder, 3/8-16 x 3-5/8"
16	596 13 32-01	Washer, 13/32 x 13/16 x 12 Ga.	117	589 52 73-01	Gauge Wheel
17	872 11 05-05	Bolt 5/16-18 x 5/8	120	596 13 49-01	Washer, Plain, 3/8 x 7/8
18	596 13 64-01	Bolt, Cup Head 5/16-18 x 5/8	122	532 18 75-57	Bushing Tension Relief
19	532 19 42-08	Pin Cotter 5/16 Bow Tie Lock	185	873 90 07-00	Nut Lock Flange 7/16-14 Gr. 5
20	532 17 43-78	Baffle Vortex	187	593 82 40-01	Stud Fastener w/"D" Anti-Rotation
21	596 04 05-01	Nut, Lock, Hex. Prvl 5/16-18	188	596 13 57-01	Nutlock, Prvl. Torq. 5/16-18 x .68
22	532 17 44-93	Stripper Mandrel	189	587 14 05-02	Arm Susp. Mower Rear
24	532 10 53-04	Cap Sleeve	190	532 19 65-39	Bolt Shoulder
25	532 17 81-02	Spring, Torsion	194	874 49 07-36	Bolt 7/16 - 24
26	532 11 04-52	Nut, Push	241	532 15 29-27	Screw TT #10-32.5 3/8 Flange
27	532 18 17-07	Deflector Shield	242	532 41 55-98	Port, Washout
29	595 29 70-01	Rod, Hinge	250	585 31 80-05	Plate Reinforcement Front
32	532 15 35-32	Pulley, Mandrel	251	585 32 24-05	Plate Reinforcement Side Bolt
33	596 13 48-01	Nut, Hex. 9/16-18 x 1.010	252	592 80 78-01	Bolt 1/4-20 x 1" ZN. SQNK
36	584 30 93-01	Screw Sems 7/16-20 x 1 Hx Hd	253	873 90 04-00	Nut Hx Flg 1/4-20 unc
39	532 19 73-80	Pulley, Idler, 4.50 Hub	--	532 41 64-05	Coupling Quick Connect
41	584 95 39-01	Bolt Hx Wshr. Hd 3/16-18 x 1.19	--	532 41 82-23	Replacement Mower, Complete
43	532 19 60-65	Arm, Idler			
46	532 13 77-29	Screw, Thdroll. 1/4-20 x 5/8			
47	593 77 34-01	Belt Deck Drive			
48	532 19 73-79	Pulley Idler 4.50 RAW			
49	873 90 06-00	Nut, Lock Flg. 3/8-16 unc			
50	817 49 06-36	Screw TT 3/8-16 x 2-1/4			
52	532 19 31-97	Pulley Idler 48" Primary			

**NOTE:** All component dimensions given in U.S. inches  
1 inch = 25.4 mm



**TRACTOR - MODEL NO. YTH24V48 (96045006301), PRODUCT NO. 960 45 00-63  
MOWER LIFT**



lift-tex\_55

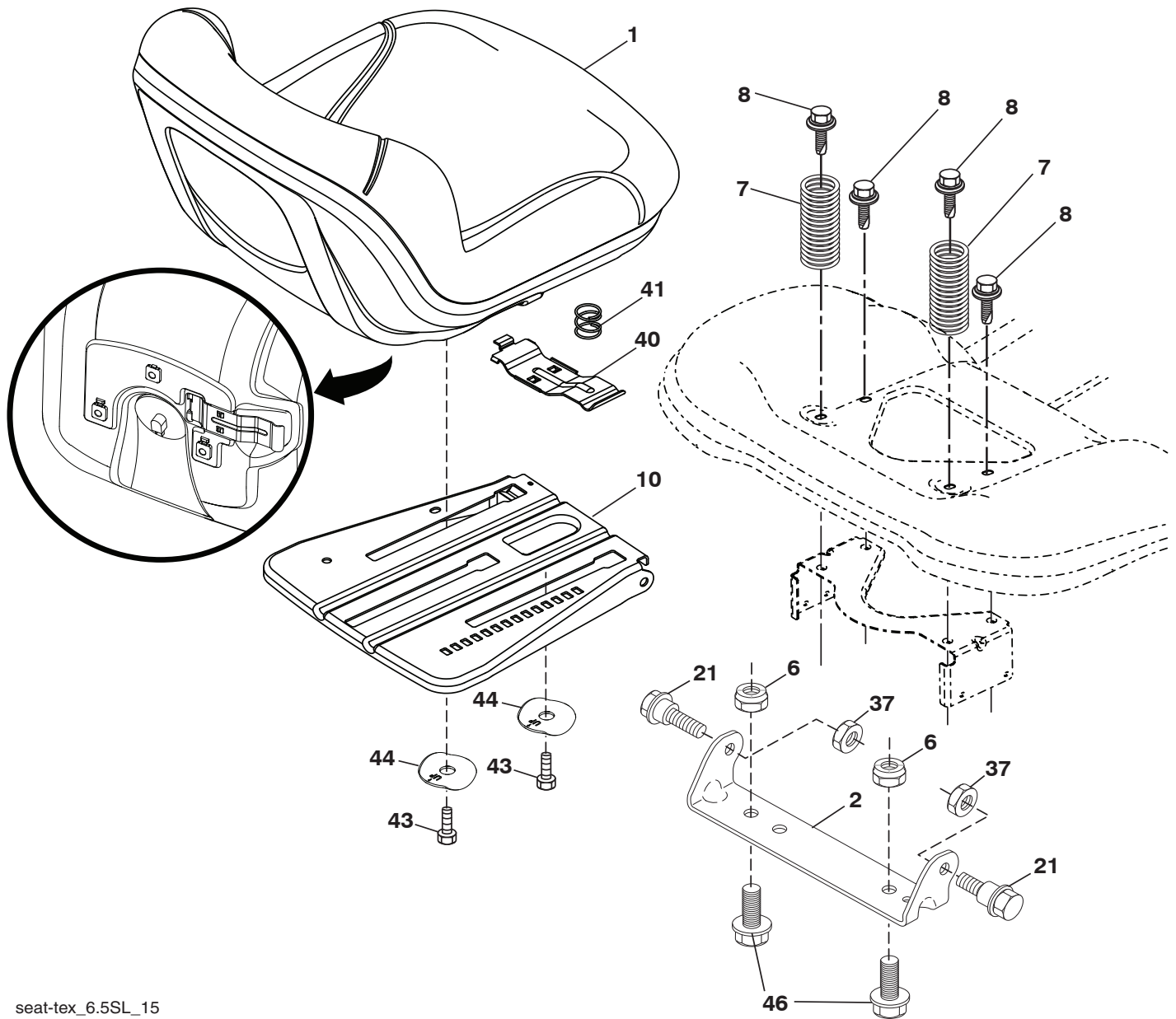
KEY NO.	PART NO.	DESCRIPTION
2	532 42 20-27	Shaft Asm. Cross, Lift
3	594 01 80-01	Handle, Liftlever, Lt, Std, Wide
7	580 96 23-01	Grip, Lever
10	532 19 63-14	Spring Torsion
87	532 19 42-09	Pin Cotter 7/16 Bow Tie Lock
88	532 41 07-10	Spring Lift Assist
89	819 19 19-12	Washer Clear Zinc
90	532 19 42-08	Pin Cotter 5/16 Bow Tie Lock

KEY NO.	PART NO.	DESCRIPTION
91	589 46 48-03	Link, Assy. Lift, Rear
97	817 00 06-12	Screw 3/8-16 x .75
98	581 50 69-02	Link, Assy. Mwr. Front, Suspension 9.820
116	594 97 65-01	Washer Round 15/32 x 15/16 x .065

**NOTE:** All component dimensions given in U.S. inches  
1 inch = 25.4 mm



**TRACTOR - MODEL NO. YTH24V48 (96045006301), PRODUCT NO. 960 45 00-63  
SEAT ASSEMBLY**



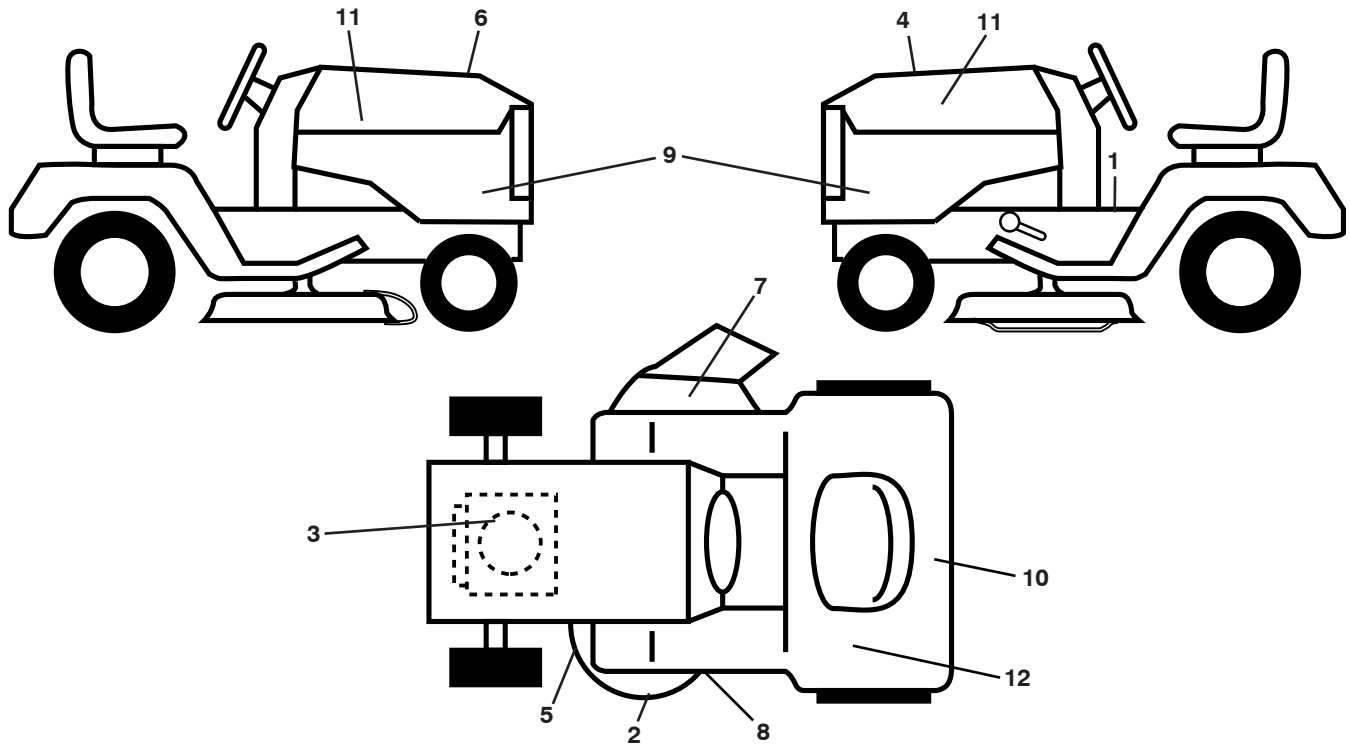
seat-tex\_6.5SL\_15

KEY NO.	PART NO.	DESCRIPTION
1	532 43 98-22	Seat
2	532 18 01-66	Bracket Pivot Fender
6	873 80 06-00	Nut, Lock w/Ins. 3/8-16 unc
7	589 48 35-01	Spring, Seat Cprsn
8	532 17 18-77	Bolt 5/16-18 unc x 3/4 w/Sems
10	596 65 74-02	Plate, Seat
21	587 90 78-01	Bolt, Shoulder 5/16-18 x 5/8
37	596 58 37-02	Nut, Hex 5/16-18 Nylon, Blk. Zinc

KEY NO.	PART NO.	DESCRIPTION
40	595 08 81-02	Handle, Seat, Slide, E-Dip, x 431
41	532 19 82-00	Spring Latch Seat
43	874 76 06-12	Bolt 3/8-16 x 3/4
44	501 05 18-01	Washer Winged 3/8 ID 1.5 OD
46	588 09 04-01	Bolt 3/8-16 x 1, 1.25

**NOTE:** All component dimensions given in U.S. inches  
1 inch = 25.4 mm

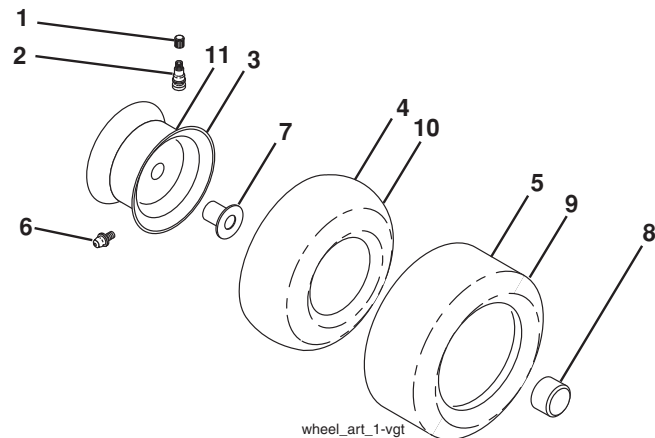
**TRACTOR - MODEL NO. YTH24V48 (96045006301), PRODUCT NO. 960 45 00-63  
DECALS**



KEY NO.	PART NO.	DESCRIPTION
1	581 57 90-01	Decal, Warning
2	599 96 68-01	Decal, Deck, Stamp
3	598 46 79-01	Decal, Engine H.P.
4	529 53 76-01	Decal, Replacement
5	581 72 45-02	Decal, Caution
6	580 88 58-01	Decal, E85 Warning
7	584 90 46-01	Decal, Deflect. Warning
8	581 58 00-02	Decal, Mower Sch.
9	585 93 80-01	Decal, Panel Side
10	596 62 34-01	Decal, Dealer, Locator
11	581 62 73-01	Decal, Hood Logo
12	529 40 53-01	Decal, Built In America, Husq.

KEY NO.	PART NO.	DESCRIPTION
--	581 72 48-01	Decal, Bypass
--	532 43 96-81	Pad, Footrest, LH
--	532 43 96-82	Pad, Footrest, RH
--	114 25 96-32	Manual, Operator's (English/Spanish)
--	114 25 95-24	Manual, Operator's (English/French)
--	529 67 30-01	Manual, Parts (English)
--	587 71 00-26	Manual, QSG (English/Spanish)
--	587 71 01-26	Manual, QSG (English/French)

**WHEELS AND TIRES**



KEY NO.	PART NO.	DESCRIPTION
1	532 05 91-92	Cap, Valve, Tire
2	532 06 51-39	Stem, Valve
3	532 13 83-36	Rim Assembly, Front
4	532 05 99-04	Tube, Front (Service Item Only)
5	532 10 62-22	Tire, Front 15 x 6-6
6	532 00 02-78	Fitting, Grease (Front Wheel Only)
7	532 00 90-40	Bearing, Flange (Front Wheel Only)
8	532 17 50-39	Cap, Axle
9	532 13 84-68	Tire, Rear 20 x 8-8
10	532 00 71-52	Tube, Rear (Service Item Only)
11	532 13 83-37	Rim Assembly, Rear
--	532 14 43-34	Sealant, Tire (10 oz. Tube)

**NOTE:** All component dimensions given in U.S. inches  
1 inch = 25.4 mm

---

# SERVICE NOTES

---



[www.husqvarna.com](http://www.husqvarna.com)