

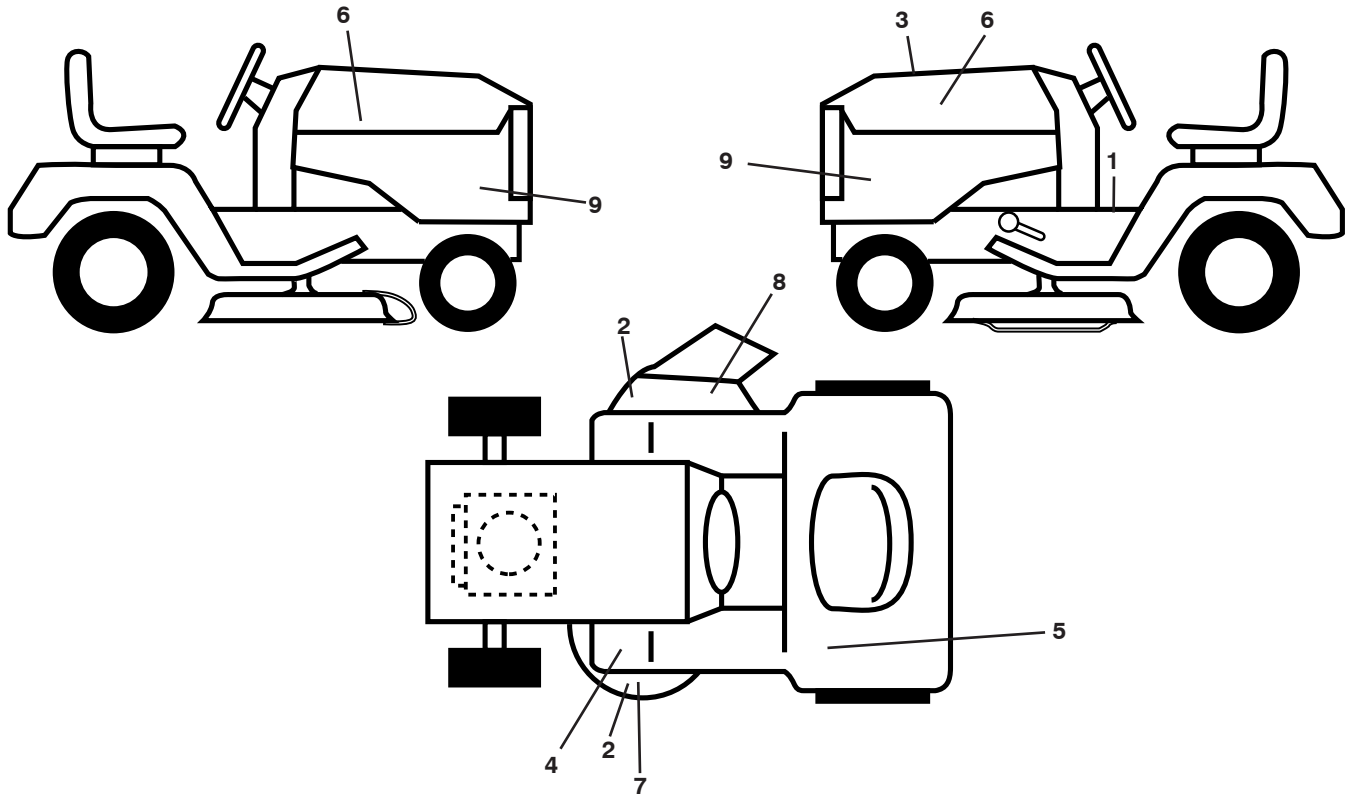
ILLUSTRATED PARTS LIST

MFG. ID NO. 96041042800

CUSTOMER CATALOG NO. TS 354

PRODUCT NO. 960 41 04-28

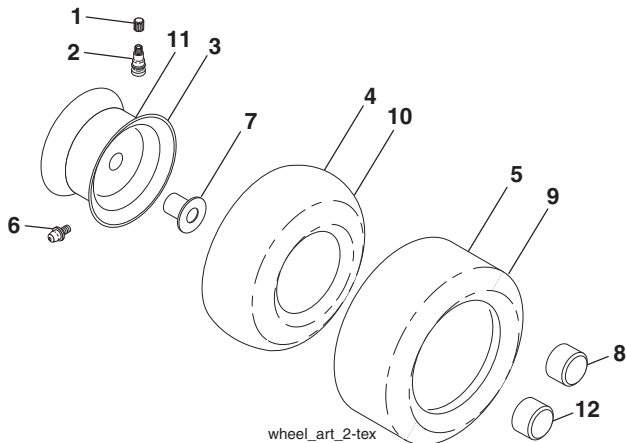
**TRACTOR - - MODEL NO. TS 354 (96041042800), PRODUCT NO. 960 41 04-28
DECALS 27**



| KEY NO. | PART NO. | DESCRIPTION |
|---------|--------------|--------------------------|
| 1 | 586 04 73-02 | Decal, Warning |
| 2 | 589 35 79-01 | Decal, No Step |
| 3 | 594 11 06-01 | Decal, Replacement |
| 4 | 591 16 47-01 | Decal, Deck Belt Routing |
| 5 | 597 47 01-01 | Decal, Reserve Fuel |
| 6 | 581 62 73-01 | Decal, Hood Logo |
| 7 | 593 80 88-01 | Decal, Deck Warning |
| 8 | 586 97 88-01 | Decal, Deflect. Warning |

| KEY NO. | PART NO. | DESCRIPTION |
|---------|--------------|------------------------------|
| 9 | 597 24 06-01 | Decal, Panel Side |
| -- | 581 72 48-01 | Decal, Bypass |
| -- | 532 43 98-82 | Pad, Footrest, LH |
| -- | 532 43 98-81 | Pad, Footrest, RH |
| -- | 114 11 59-28 | Manual, Operator's (English) |
| -- | 114 23 79-80 | Manual, Operator's (Korean) |
| -- | 114 11 60-28 | Manual, Part's (English) |
| -- | 587 71 00-26 | Manual QSG (English/Spanish) |

WHEELS AND TIRES



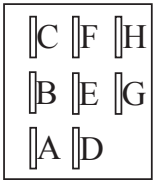
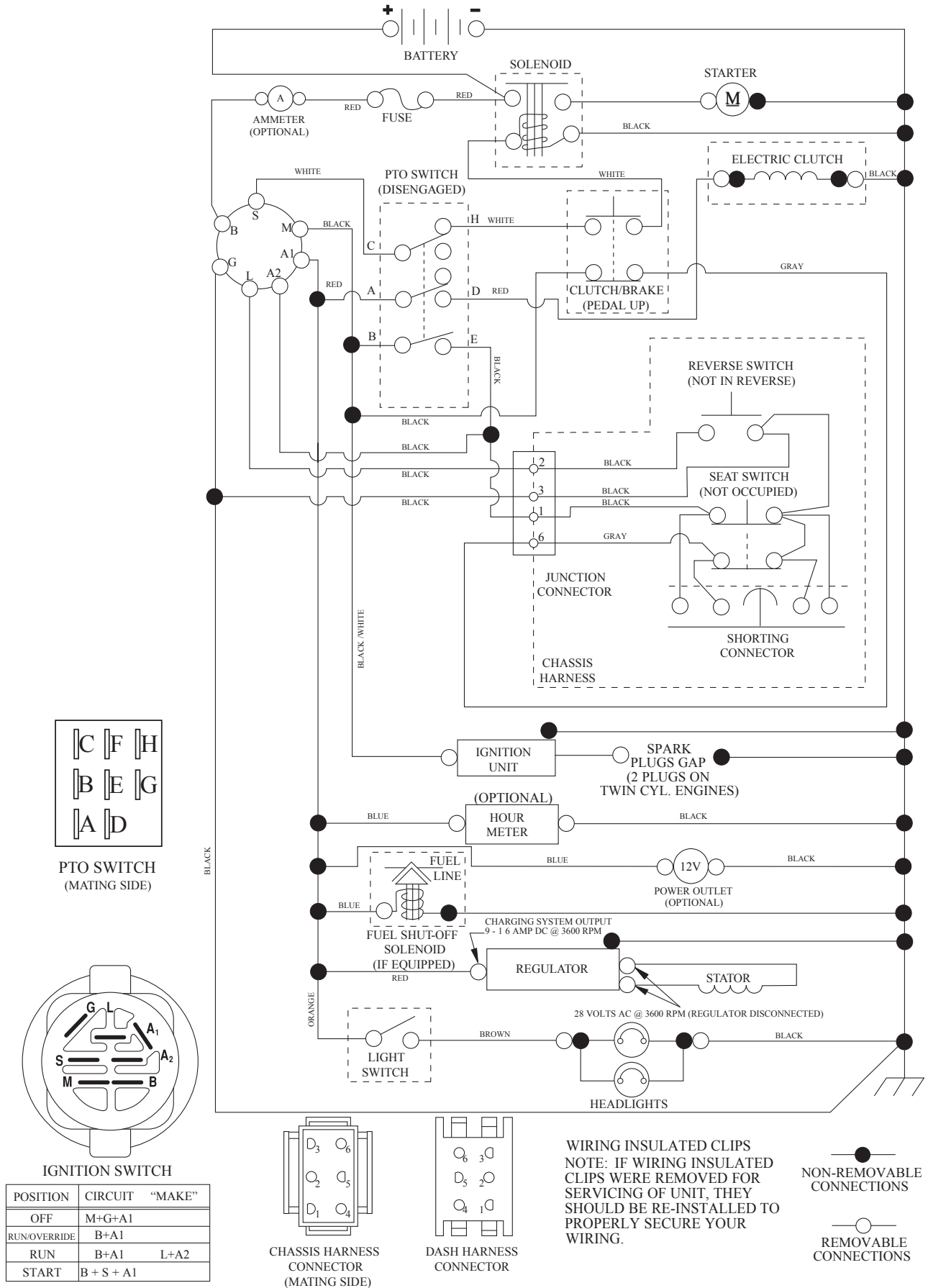
| KEY NO. | PART NO. | DESCRIPTION |
|---------|--------------|------------------------------------|
| 1 | 532 05 91-92 | Cap, Valve, Tire |
| 2 | 532 06 51-39 | Stem, Valve |
| 3 | 532 18 18-39 | Rim Assembly, Front |
| 4 | 532 00 81-34 | Tube, Front (Service Item Only) |
| 5 | 593 14 51-01 | Tire, Front 16 x 6.5-8 |
| 6 | 532 00 02-78 | Fitting, Grease (Front Wheel Only) |
| 7 | 532 00 90-40 | Bearing, Flange (Front Wheel Only) |
| 8 | 532 17 50-39 | Cap, Axle, Front |
| 9 | 593 14 52-01 | Tire, Rear 23 x 10.5-12 |
| 10 | 532 00 71-54 | Tube, Rear (Service Item Only) |
| 11 | 593 14 48-01 | Rim Assembly, Rear |
| 12 | 501 50 31-01 | Cap, Hub, GT, PM, Black, Rear |
| -- | 532 14 43-34 | Sealant, Tire (10 oz. Tube) |

NOTE: All component dimensions given in U.S. inches
1 inch = 25.4 mm

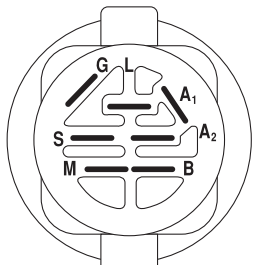
TRACTOR - - MODEL NO. TS 354 (96041042800), PRODUCT NO. 960 41 04-28

SCHEMATIC **38**

SCH12

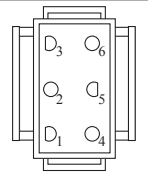


PTO SWITCH (MATING SIDE)

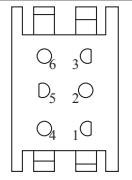


IGNITION SWITCH

| POSITION | CIRCUIT "MAKE" |
|--------------|----------------|
| OFF | M+G+A1 |
| RUN/OVERRIDE | B+A1 |
| RUN | B+A1 L+A2 |
| START | B+S+A1 |

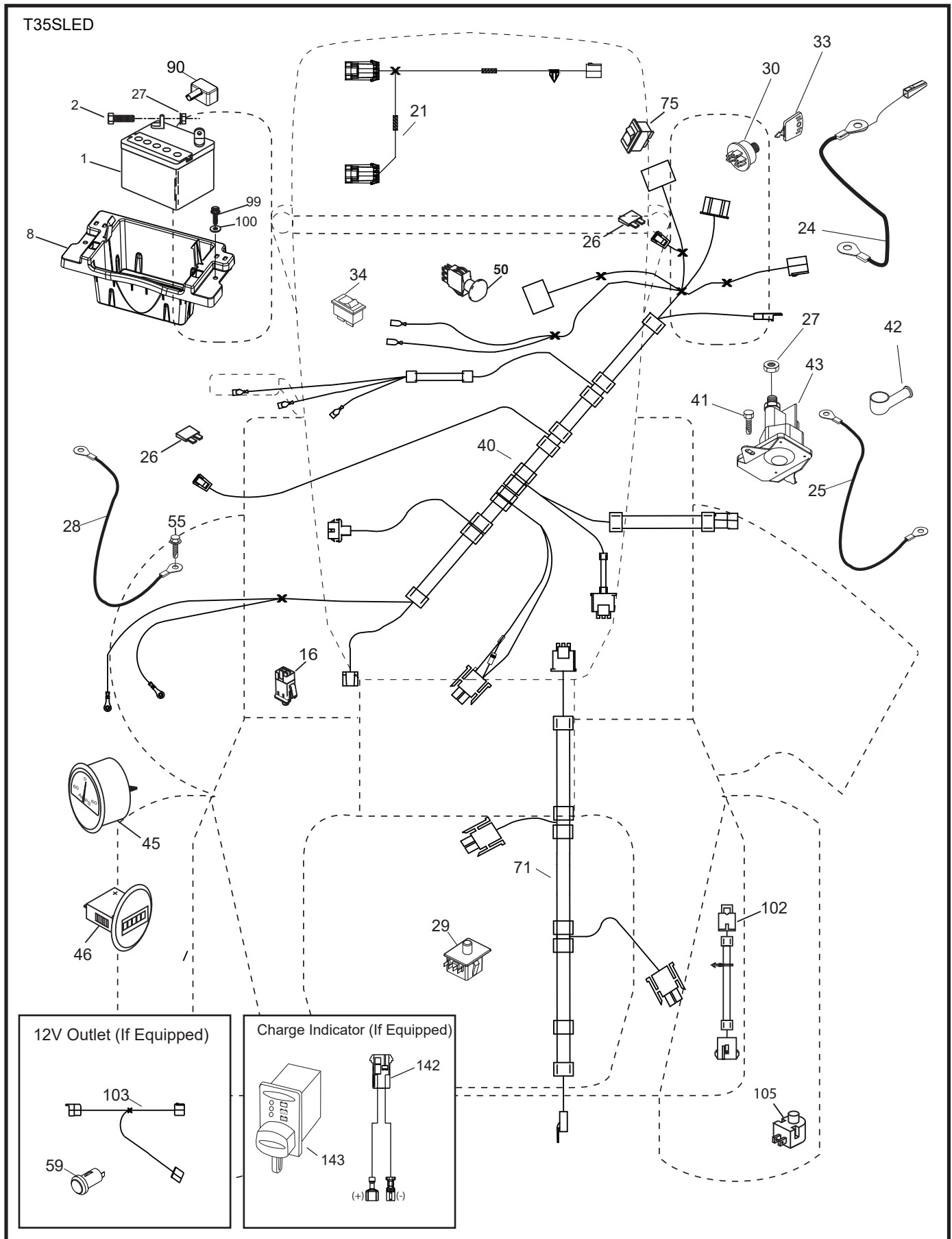


CHASSIS HARNESS CONNECTOR (MATING SIDE)



DASH HARNESS CONNECTOR

TRACTOR - - MODEL NO. TS 354 (96041042800), PRODUCT NO. 960 41 04-28
ELECTRICAL 32

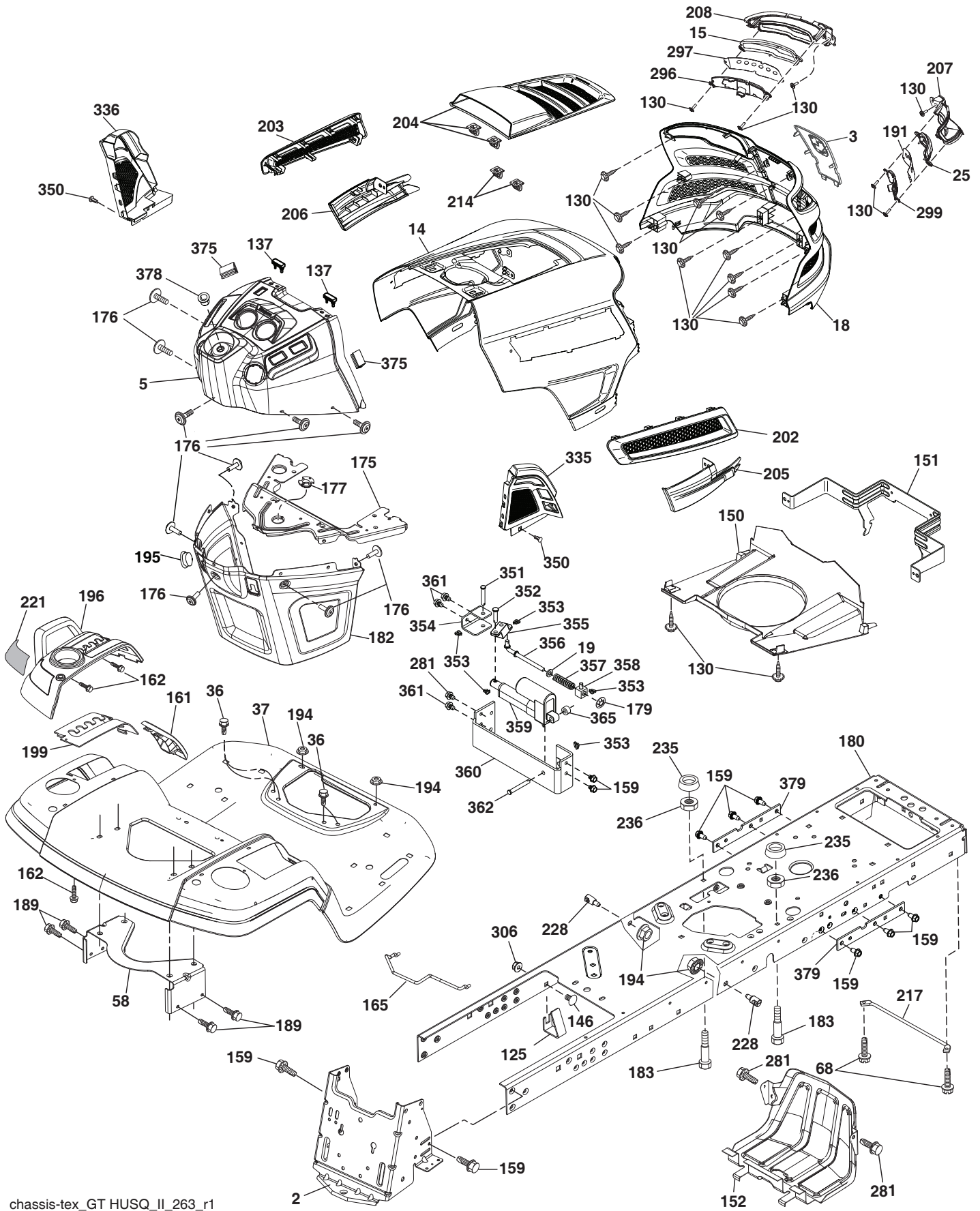


**TRACTOR - - MODEL NO. TS 354 (96041042800), PRODUCT NO. 960 41 04-28
ELECTRICAL 32**

| KEY NO. | PART NO. | DESCRIPTION |
|--------------------|---------------------|-----------------------------------|
| 1 | 532 16 34-65 | Battery |
| 2 | 874 76 04-12 | Bolt Hex Hd 1/4-20 unc x 3/4 |
| 8 | 587 20 51-01 | Battery Box |
| 16 | 532 17 61-38 | Switch Interlock |
| 21 | 585 43 64-01 | Harness Light |
| 24 | 585 55 56-01 | Cable FR Batt |
| 25 | 585 55 55-01 | Cable Starter |
| 26 | 532 17 51-58 | Fuse |
| 27 | 596 13 36-01 | Locknut, Keps. 1/4-20 |
| 28 | 532 41 65-88 | Cable Ground |
| 29 | 532 19 27-49 | Switch Seat |
| 30 | 532 19 33-50 | Switch Ign |
| 33 | 532 41 19-35 | Key/Chain |
| 34 | 532 11 07-12 | Switch Light/Reset |
| 40 | 501 13 36-01 | Harness Ign. Dash |
| 41 | 817 72 04-08 | Screw 1/4-20 unc x 1/2 |
| 42 | 532 13 15-63 | Cover Terminal Red |
| 43 | 582 04 28-02 | Solenoid, W/Brass, Plunger, ZN |
| 45 | 587 55 39-06 | Gauge Ammeter |
| 46 | 587 55 40-06 | Gauge Hourmeter |
| 50 | 582 10 76-02 | Switch PTO |
| 55 | 817 06 05-12 | Screw Thdrol 5/16-18 x 3/4 |
| 71 | 580 51 30-01 | Harness Ign Chassis |
| 75 | 580 36 64-01 | Switch On/On |
| 90 | 532 43 53-95 | Cover Terminal Battery |
| 99 | 817 67 04-12 | Screw Hexwsh Thdrol 1/4-20 x 3/4 |
| 100 | 596 13 53-01 | Washer, Plain 9/32 x 7/8 Clr. Zn. |
| 102 | 532 40 44-54 | Harness Pigtail |
| 105 | 532 40 75-68 | Switch Reverse |

NOTE: All component dimensions given in U.S. inches
1 inch = 25.4 mm

TRACTOR - - MODEL NO. TS 354 (96041042800), PRODUCT NO. 960 41 04-28
CHASSIS AND ENCLOSURES 39



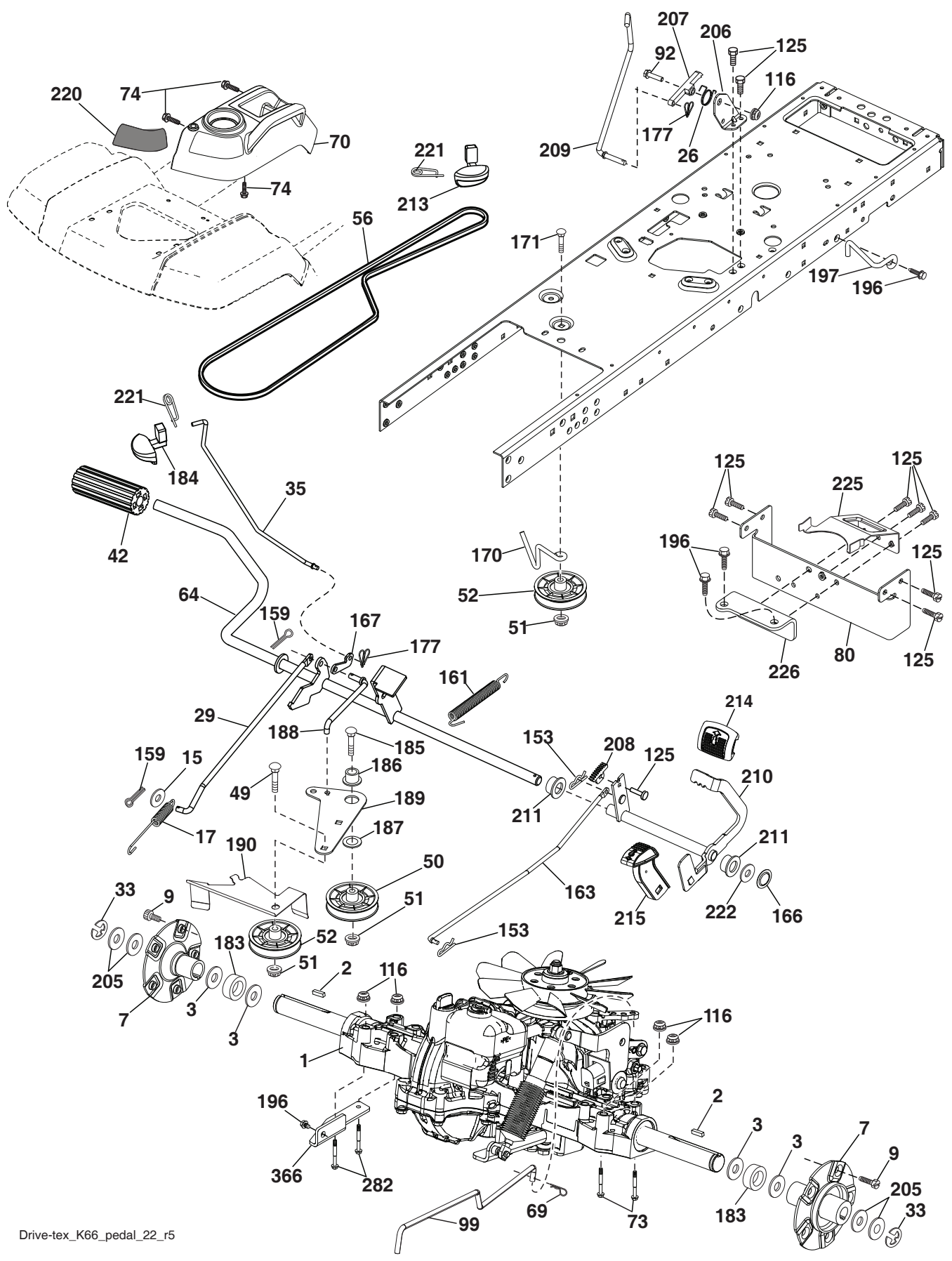
chassis-tex_GT HUSQ_II_263_r1

**TRACTOR - - MODEL NO. TS 354 (96041042800), PRODUCT NO. 960 41 04-28
CHASSIS AND ENCLOSURES 39**

| KEY NO. | PART NO. | DESCRIPTION | KEY NO. | PART NO. | DESCRIPTION |
|------------|--------------|------------------------------------|------------|--------------|------------------------------------|
| 2 | 580 43 44-01 | Drawbar | 207 | 585 42 00-02 | Bezel RH |
| 3 | 532 44 44-81 | Logo Husq. | 208 | 585 42 01-02 | Bezel LH |
| 5 | 590 74 88-19 | Dash | 214 | 532 19 91-45 | Clip Retainer |
| 14 | 532 44 11-77 | Hood | 217 | 532 40 91-67 | Rod Pivot |
| 15 | 585 42 03-01 | Lens LH | 221 | 532 19 89-09 | Reflector LH |
| 18 | 597 24 73-01 | Grille Assembly | 228 | 593 82 40-01 | Stud, W/"D" Anti-rotation |
| 19 | 596 13 32-01 | Washer 13/32 x 13/16 x 12 Ga. | 235 | 596 56 42-01 | Spacer, Fender, Clr. Zn |
| 25 | 585 42 02-01 | Lens RH | 236 | 873 93 05-00 | Nut Center Lock 5/16-18 unc |
| 36 | 817 06 05-12 | Screw 5/16-18 x 3/4 | 281 | 817 00 06-16 | Screw 3/8-16 x 1 |
| 37 | 532 44 12-08 | Fender | 296 | 585 42 05-01 | LED Light LH |
| 58 | 532 19 43-14 | Bracket Fender | 297 | 586 18 29-01 | Insert Reflect. LH |
| 68 | 596 03 07-01 | Screw, Hexagon, 5/16-18 x 1/2 | 299 | 585 42 04-01 | LED Light RH |
| 125 | 581 68 48-01 | Clip Fuel Line | 306 | 873 90 06-00 | Nut Lock |
| 130 | 596 32 17-01 | Screw, #10 x 0.750 BOS Thread | 335 | 532 44 82-04 | Cover RH Lower |
| 137 | 532 40 75-90 | Bumper Dash | 336 | 532 44 53-09 | Cover LH Lower |
| 146 | 581 85 79-01 | Bolt | 350 | 532 44 51-43 | Clip X-mas Tree |
| 150 | 532 43 97-74 | Duct Heat Hood | 351 | 532 42 17-34 | Pin Clevis .375 x 2.125 |
| 151 | 532 43 66-70 | Bracket Pivot Hood | 352 | 532 44 86-34 | Clevis .375 x 2.125 |
| 152 | 532 43 98-70 | Shield Browning | 353 | 532 17 80-62 | Clip Retainer .0375 |
| 159 | 817 00 06-12 | Screw 3/8-16 x 3/4 | 354 | 593 19 69-01 | Support, Diff. Lock, Bellcrank |
| 161 | 532 43 99-29 | Fuel Window | 355 | 532 44 86-36 | Bellcrank Pivot Lock Diff |
| 162 | 596 13 41-01 | Screw, Hex. Tap. 1/4-15 x 1/2 | 356 | 532 44 86-93 | Link Lock Diff |
| 165 | 532 19 43-30 | Bracket Support Tank | 357 | 532 44 86-84 | Spring Compression |
| 175 | 590 60 77-02 | Crossmember | 358 | 599 12 81-01 | Swivel Guide |
| 176 | 532 40 07-76 | Screw 10-24 x 5/8 Wshd Qdrx | 359 | 584 39 34-01 | Actuator Electric |
| 177 | 532 19 52-28 | Bushing Steering | 360 | 532 44 86-18 | Bracket Actuator |
| 179 | 532 16 89-37 | Nut Push | 361 | 596 56 40-02 | Bolt, Hdd. 3/8-16 x 0.655 Clr. Zn. |
| 180 | 593 34 63-02 | Chassis | 362 | 532 44 86-33 | Clevis .375 x 2.42 |
| 182 | 532 40 68-59 | Dash Lower | 365 | 532 44 73-68 | Nylon Spacer .375 x .4375L |
| 183 | 595 30 57-01 | Screw, Hexagon, 5/16-18 x 1-1/4 | 375 | 586 90 82-01 | Dash Clip-On Bumper |
| 189 | 817 00 05-12 | Screw 5/16-18 x 3/4 | 378 | 590 84 98-01 | Bushing Flange |
| 191 | 586 18 28-01 | Insert Reflect. RH | 379 | 593 20 69-02 | Chassis Plate Reinforcement |
| 194 | 596 13 57-01 | Nutlock, Prvl, Torq. 5/16-18 x .68 | -- | 532 43 18-82 | Kit Guard Brush |
| 195 | 532 40 41-37 | Plug Hole Dash | | | |
| 196 | 532 43 97-16 | Console Asm. Deck Lift | | | |
| 199 | 532 19 82-59 | Plate Deck Lift | | | |
| 202 | 532 43 97-28 | Vent Side Hood RH | | | |
| 203 | 532 43 97-27 | Vent Side Hood LH | | | |
| 204 | 587 48 58-01 | Vent, Asm. Husq. Gt2 | | | |
| 205 | 532 43 97-30 | Trim Hood Side RH | | | |
| 206 | 532 43 97-29 | Trim Hood Side LH | | | |

NOTE: All component dimensions given in U.S. inches
1 inch = 25.4 mm

TRACTOR - - MODEL NO. TS 354 (96041042800), PRODUCT NO. 960 41 04-28
DRIVE **40**



Drive-tex_K66_pedal_22_r5

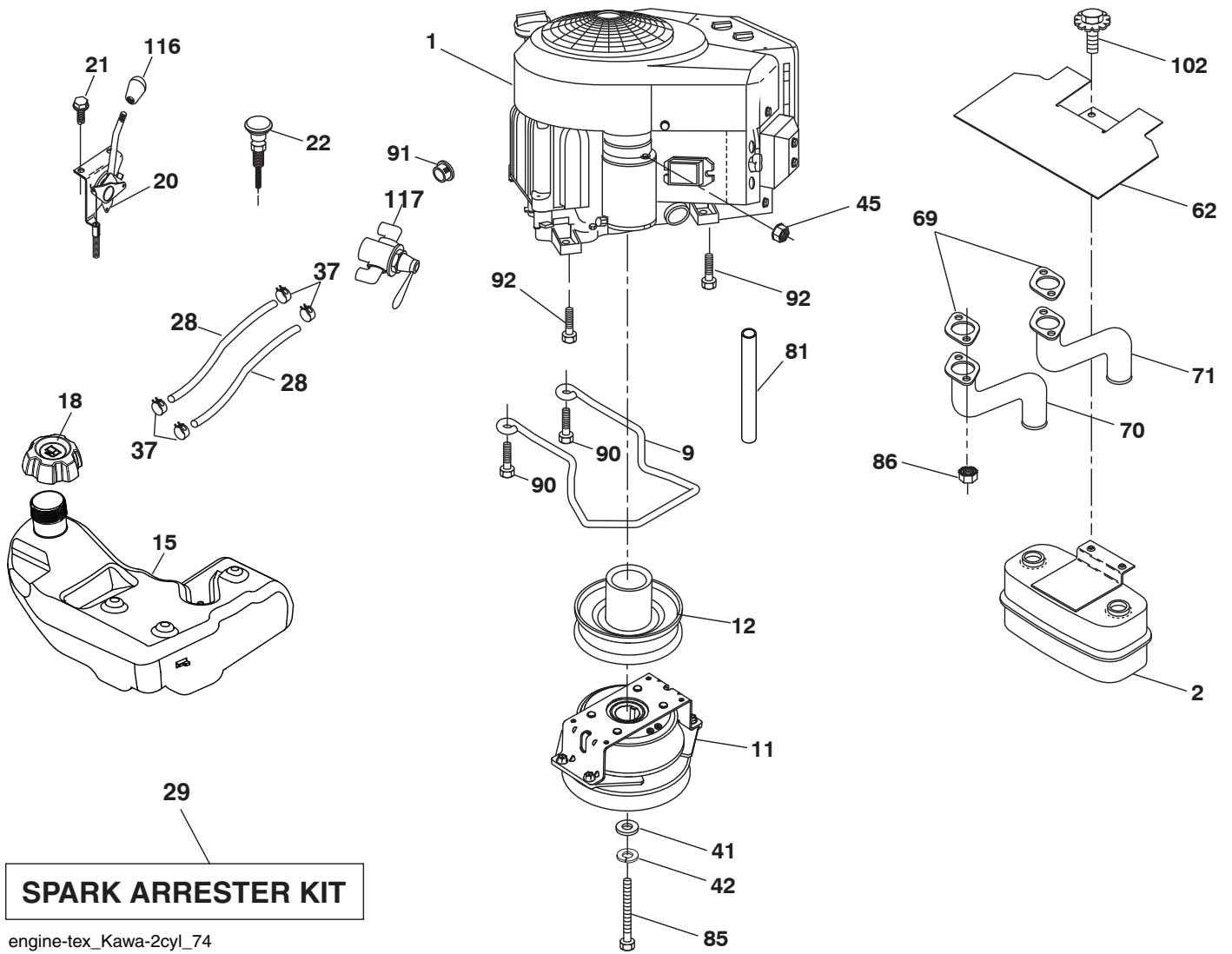
**TRACTOR - - MODEL NO. TS 354 (96041042800), PRODUCT NO. 960 41 04-28
DRIVE **40****

| KEY NO. | PART NO. | DESCRIPTION |
|---------|--------------|--|
| 1 | --- | Transaxle, Tufftorq K66ELD (580402201)(Order parts from transaxle manufacturer.) |
| 2 | 539 91 27-57 | Key .25 x 1.25 |
| 3 | 532 00 75-63 | Washer Thrust Axle Hardened |
| 7 | 586 93 54-02 | Hub Asm. Wheel |
| 9 | 596 21 87-01 | Bolt, Fit, Shank 7/16-14 x 1-3/8" |
| 15 | 596 56 53-01 | Washer, 3/8 x 0.08 In. St. Clr. Zinc |
| 17 | 532 40 10-72 | Spring, Brake |
| 26 | 532 19 96-79 | Spring Return Cruise |
| 29 | 532 40 72-45 | Rod, Brake |
| 33 | 812 00 00-53 | Ring E |
| 35 | 583 86 45-02 | Rod, Brake, Park |
| 42 | 532 00 88-83 | Cover, Foot Pedal |
| 49 | 596 13 62-01 | Bolt, Cup Head, 3/8-16 x 3/4 |
| 50 | 532 19 43-27 | Pulley Idler Flat |
| 51 | 873 90 06-00 | Lock Nut 3/8-16 |
| 52 | 532 19 43-26 | Idler V-Groove |
| 56 | 592 85 53-01 | V-Belt, Drive |
| 64 | 532 19 78-65 | Shaft Asm. Pedal Brake Control |
| 69 | 532 42 33-03 | Hairpin, Soft, Zinc .059 x 1.125 |
| 70 | 532 43 96-61 | Console Asm |
| 73 | 595 31 66-01 | Bolt, Hhd W/flange 5/16-18 Gr. 5 |
| 74 | 596 13 41-01 | Screw, Hex. Tap. 1/4-15 x 1/2 |
| 80 | 589 33 34-02 | Strap Torque |
| 92 | 595 30 57-01 | Screw, Hexagon, 5/16-18 x 1-1/4 |
| 99 | 582 40 47-01 | Spring Bypass |
| 116 | 596 13 57-01 | Nutlock, Prvl. Torq. 5/16-18 x .68 |
| 125 | 817 00 05-12 | Screw 5/16-18 x 3/4 |
| 153 | 532 00 44-97 | Retainer Spring |
| 159 | 596 02 95-01 | Pin, Cotter, 1/8 Dia. x 3/4 |
| 161 | 532 10 57-09 | Spring, Return, Clutch |
| 163 | 532 40 72-46 | Rod Pedal Control |
| 166 | 532 42 91-64 | Nut Push .625 |
| 167 | 532 40 52-57 | Latch Brake Parking |
| 170 | 532 19 43-22 | Keeper V-Idler Centerspan |

| KEY NO. | PART NO. | DESCRIPTION |
|---------|--------------|-----------------------------------|
| 171 | 596 13 63-01 | Bolt, Cup Head, 3/8-16 x 2 |
| 177 | 587 22 53-01 | Pin Cotter, Locking, Bowtie, 1 in |
| 183 | 598 87 30-02 | Spacer, Split 1.00 ID 1.75" |
| 184 | 587 65 37-01 | Handle Parking Brake |
| 185 | 872 11 06-22 | Bolt Rdhd 3/8-16 unc x 2-3/4 G5 |
| 186 | 532 19 43-21 | Spacer Retainer |
| 187 | 596 13 55-01 | Washer, 13/32 x 2 Clear, Zinc |
| 188 | 582 21 70-01 | Link Clutch Ground Drive Long |
| 189 | 532 19 43-17 | Bellcrank Ground Drive |
| 190 | 532 19 43-18 | Keeper Bellcrank Ground Drive |
| 196 | 817 00 06-16 | Screw 3/8-16 x 1 |
| 197 | 585 65 86-02 | Wireform, Clutch, Antirotation |
| 205 | 532 12 38-00 | Washer 1-1/32 x 1-5/8 x 16 Ga. |
| 206 | 532 44 85-96 | Bracket Mount Latch Cruise |
| 207 | 587 03 14-02 | Latch, Cruise, Control, Tex. Clr. |
| 208 | 596 56 41-01 | Gear |
| 209 | 596 86 98-01 | Rod, Control, Cruise, Husq. Tex |
| 210 | 532 19 78-60 | Rocker Asm. Pedal Control |
| 211 | 532 12 01-83 | Bearing Nylon |
| 213 | 532 40 31-19 | Knob Control Cruise |
| 214 | 532 42 12-63 | Pedal Forward |
| 215 | 586 60 65-02 | Pedal Reverse |
| 220 | 532 19 89-08 | Reflector RH |
| 221 | 532 40 31-87 | Retainer Spring Clip Handle |
| 222 | 879 21 20-10 | Washer 21/32 x 1-1/4 x 10 Ga. |
| 225 | 532 40 73-11 | Keeper Belt |
| 226 | 532 40 71-09 | Bracket Mount Torque |
| 282 | 874 49 05-48 | Bolt 5/16-18 x 3.0 G5 |
| 366 | 580 62 62-02 | Bracket Reinforcement |

NOTE: All component dimensions given in U.S. inches
1 inch = 25.4 mm

TRACTOR - - MODEL NO. TS 354 (96041042800), PRODUCT NO. 960 41 04-28
ENGINE **24**

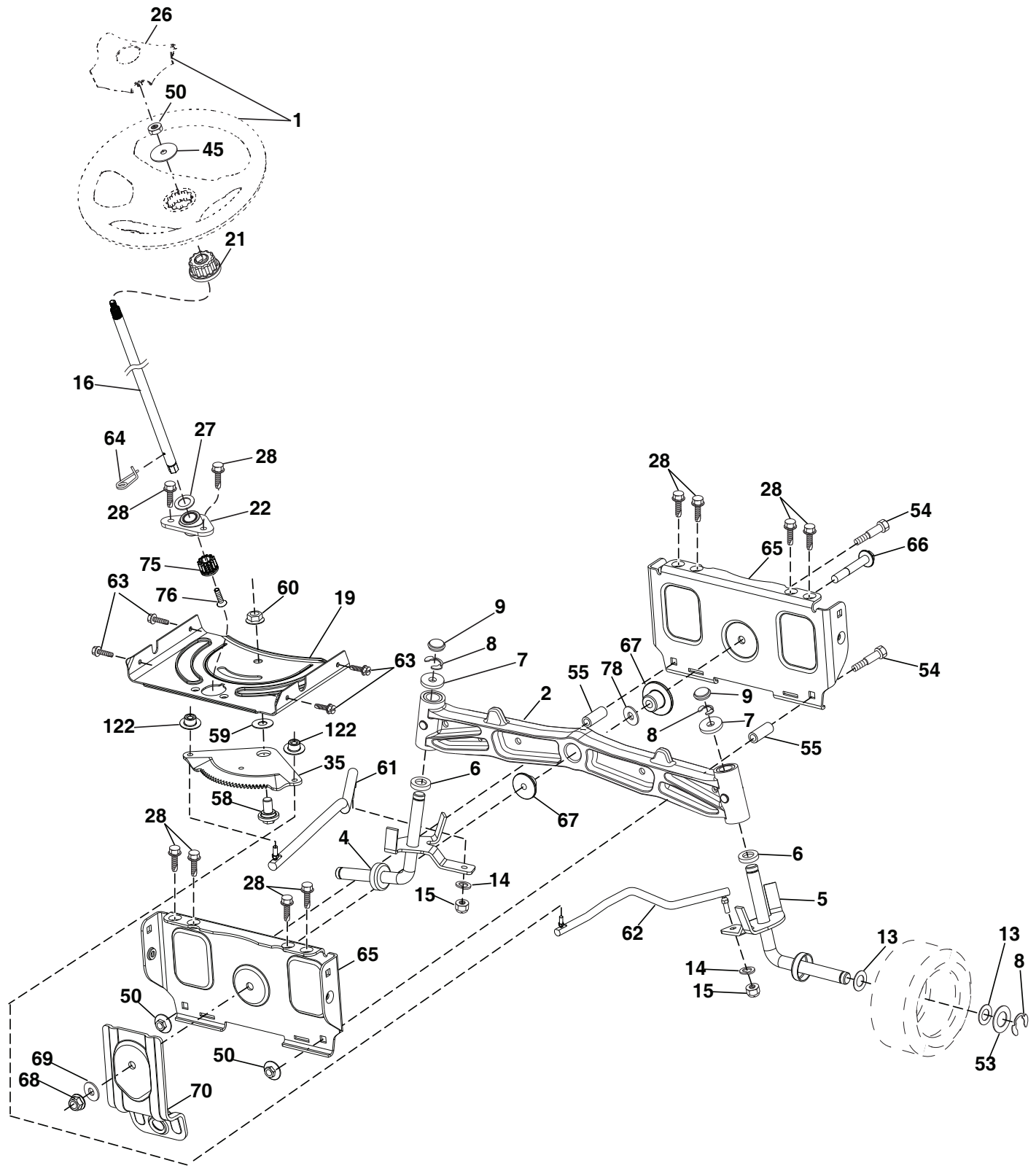


**TRACTOR - - MODEL NO. TS 354 (96041042800), PRODUCT NO. 960 41 04-28
ENGINE 24**

| KEY NO. | PART NO. | DESCRIPTION |
|----------------|-----------------|---|
| 1 | ----- | Engine KAWA Model No. FR730V-ES04 (445363)(Order parts from engine manufacturer.) |
| 2 | 589 81 87-01 | Muffler |
| 9 | 596 50 15-02 | Keeper Asm. Belt Engine |
| 11 | 587 24 14-01 | Clutch Electric |
| 12 | 532 19 43-43 | Pulley Engine |
| 15 | 532 42 28-04 | Tank Fuel |
| 18 | 584 24 87-02 | Cap Asm |
| 20 | 532 42 43-41 | Control Throttle |
| 21 | 596 32 17-01 | Screw, #10 x 0.750 BOS Thread |
| 22 | 532 18 95-41 | Control Choke |
| 28 | 532 40 11-35 | Fuel Line |
| 29 | 532 13 71-80 | Spark Arrester Kit |
| 37 | 532 12 34-87 | Clamp Hose |
| 41 | 532 12 61-97 | Washer 1-1/2 OD x 15/32 ID x .250 |
| 42 | 596 23 89-01 | Washer, 7/16 in. Clr. Zn |
| 45 | 596 13 36-01 | Locknut, Keps. 1/4-20 |
| 62 | 532 43 40-17 | Shield Heat Muffler |
| 69 | 532 17 81-51 | Gasket |
| 70 | 583 95 56-01 | Tube Exhaust LH |
| 71 | 583 95 57-01 | Tube Exhaust RH |
| 81 | 532 14 84-56 | Oil Tube Drain |
| 85 | 501 60 69-01 | Bolt 7/16-20 x 3.0 x Gr. 5 |
| 86 | 532 18 43-62 | Nut Hex M8-1.25 |
| 90 | 817 00 06-16 | Screw 3/8-16 x 1 |
| 91 | 532 18 74-95 | Bushing |
| 92 | 817 12 06-16 | Screw 3/8-16 x 1 |
| 102 | 817 00 05-12 | Screw 5/16 x 3/4 |
| 116 | 539 13 26-24 | Knob Soft Touch |
| 117 | 532 42 08-28 | Valve Fuel Reserve |

NOTE: All component dimensions given in U.S. inches
1 inch = 25.4 mm

TRACTOR - - MODEL NO. TS 354 (96041042800), PRODUCT NO. 960 41 04-28
 STEERING ASSEMBLY **41**



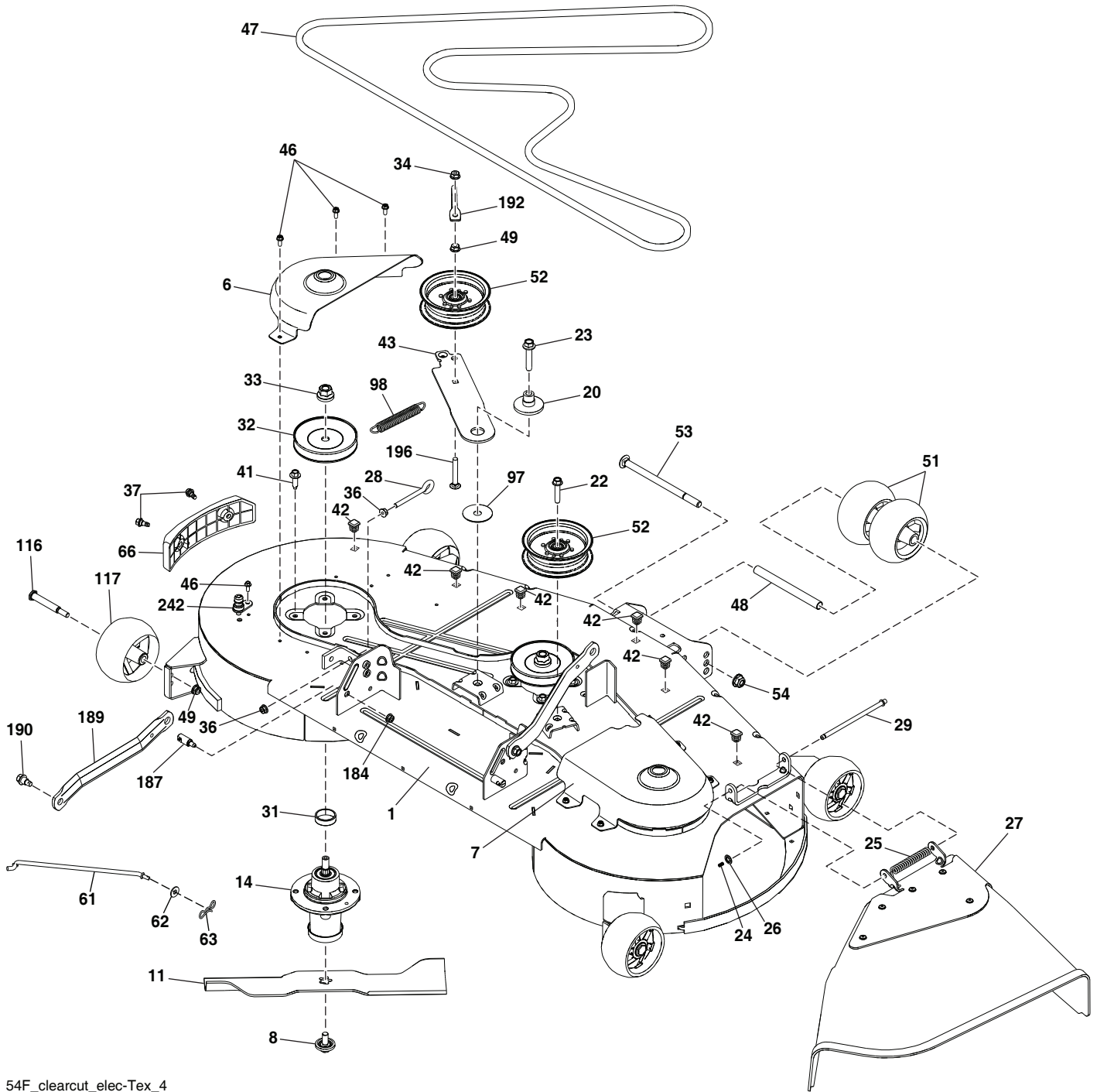
steering-tex_HUSQSR_70_r1

**TRACTOR - - MODEL NO. TS 354 (96041042800), PRODUCT NO. 960 41 04-28
STEERING ASSEMBLY **41****

| KEY PART NO. | PART NO. | DESCRIPTION |
|-------------------------|---------------------|--|
| 1 | 597 86 61-01 | Wheel, Steering, Kit (includes steering wheel and cap) |
| 2 | 532 19 59-68 | Axle Asm., Front |
| 4 | 532 40 30-89 | Spindle Asm. LH |
| 5 | 532 40 30-90 | Spindle Asm. RH |
| 6 | 532 00 62-66 | Washer .75 x 1.230 |
| 7 | 532 12 17-48 | Washer 25/32 x 1-5/8 x 16 Ga. |
| 8 | 812 00 00-29 | Ring, Clip #T5304-75 |
| 9 | 532 12 12-32 | Cap, Spindle |
| 13 | 532 12 17-49 | Washer 25/32 x 1-1/4 x 16 Ga. |
| 14 | 596 23 87-01 | Washer, Spring, Lock, .381 ID x .680 |
| 15 | 873 54 06-00 | Nut, Crown Lock 3/8-24 unF |
| 16 | 587 01 60-02 | Steering Shaft |
| 19 | 532 19 47-29 | Plate Steering |
| 21 | 586 84 02-01 | Adapter Wheel Steering |
| 22 | 585 02 99-01 | Bearing |
| 26 | 594 94 91-01 | Cap, Steering Wheel, Husq2. Gray, 498 |
| 27 | 596 93 34-01 | Washer, Plain |
| 28 | 817 00 06-12 | Screw 3/8-16 x 3/4 |
| 35 | 532 19 47-32 | Gear, Sector Plate |
| 45 | 587 01 64-01 | Washer 3/8 ID 2-3/8 OD 12 Ga. PLTD |
| 50 | 873 90 06-00 | Nut Lock Flg 3/8-16 unc |
| 53 | 532 18 89-67 | Washer Hardened .793 x 1.637 x .060 |
| 54 | 874 76 06-36 | Bolt Hex 3/8-16 unc x 2-1/4 |
| 55 | 532 41 47-36 | Bolt Hex 3/8-16 unc x 2-1/4 |
| 58 | 532 19 47-47 | Bolt Shoulder Sector Pivot CFM |
| 59 | 532 19 47-48 | Washer Thrust Sector Steering |
| 60 | 873 97 10-00 | Nut Flange Lock 5/8-11 |
| 61 | 597 07 02-02 | Draglink, LH. Adj. Std. Clrzn. |
| 62 | 597 07 03-02 | Draglink, RH. Adj. Std. Clrzn. |
| 63 | 817 00 05-12 | Screw 5/16-18 x 3/4 |
| 64 | 532 19 98-49 | Retainer Clip Spring Steering |
| 65 | 532 19 47-34 | Brace Axle Front |
| 66 | 871 02 07-48 | Bolt Hex Fghd 7/16-14 x 3 Serr |
| 67 | 532 19 47-37 | Bushing PM Front Axle |
| 68 | 873 90 07-00 | Nut Lock Flange 7/16-14 Gr. 5 |
| 69 | 532 19 91-62 | Washer 1.5 x .505 x .118 |
| 70 | 585 33 88-01 | Bracket Deck Susp. Front |
| 75 | 580 68 37-01 | Pinion |
| 76 | 580 68 36-01 | Screw Head Sock |
| 78 | 532 05 70-79 | Washer Thrust |
| 122 | 532 44 49-62 | Cap Gear Sector |

NOTE: All component dimensions given in U.S. inches
1 inch = 25.4 mm

TRACTOR - - MODEL NO. TS 354 (96041042800), PRODUCT NO. 960 41 04-28
MOWER DECK **44**



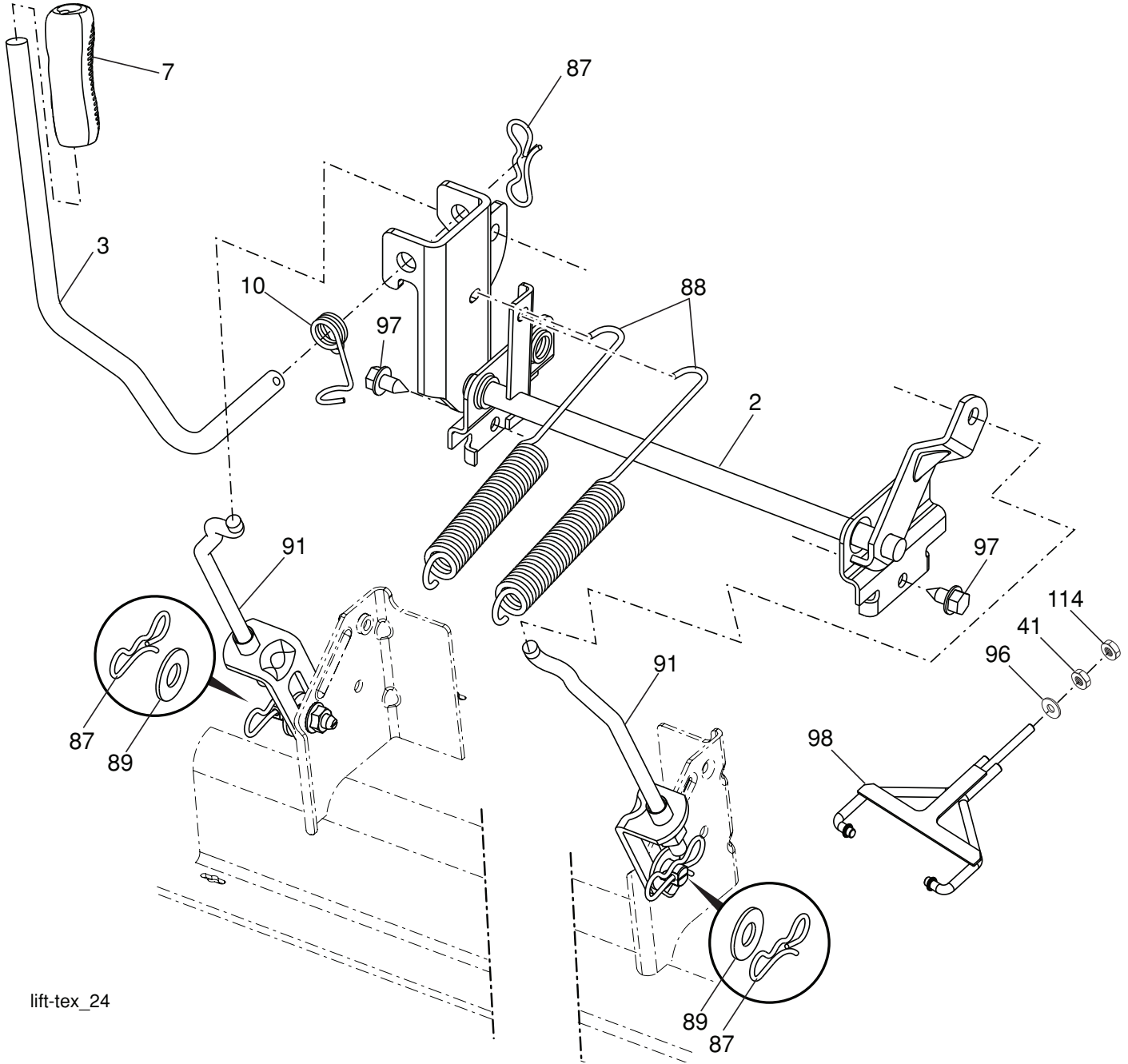
54F_clearcut_elec-Tex_4

**TRACTOR - - MODEL NO. TS 354 (96041042800), PRODUCT NO. 960 41 04-28
MOWER DECK 44**

| KEY PART NO. NO. | DESCRIPTION | KEY PART NO. NO. | DESCRIPTION |
|---------------------|--------------|---------------------|--------------|
| 1 | 592 61 88-01 | 49 | 873 90 06-00 |
| 6 | 590 30 43-03 | 51 | 574 16 96-01 |
| 7 | 590 30 42-03 | 52 | 532 19 73-79 |
| 8 | 532 19 30-03 | 53 | 594 94 45-01 |
| 11 | 582 76 05-02 | 54 | 521 99 11-02 |
| 14 | 539 13 18-98 | 61 | 596 27 44-01 |
| 20 | 532 19 72-36 | 62 | 596 13 32-01 |
| 22 | 596 56 40-03 | 63 | 532 19 42-08 |
| 23 | 588 43 83-01 | 66 | 590 73 25-01 |
| 24 | 532 10 53-04 | 97 | 532 17 85-15 |
| 25 | 587 35 47-01 | 98 | 587 35 84-01 |
| 26 | 532 11 04-52 | 116 | 596 43 44-04 |
| 27 | 590 63 22-01 | 117 | 589 52 73-01 |
| 28 | 596 24 08-01 | 184 | 596 13 57-01 |
| 29 | 595 29 70-01 | 187 | 593 82 40-01 |
| 31 | 532 18 76-90 | 189 | 587 14 05-02 |
| 32 | 532 15 35-35 | 190 | 532 19 65-39 |
| 33 | 596 13 48-01 | 192 | 532 19 84-68 |
| 34 | 596 32 26-01 | 196 | 596 33 78-01 |
| 36 | 596 03 92-01 | 242 | 532 41 55-98 |
| 37 | 532 17 01-65 | -- | 532 41 64-05 |
| 41 | 584 95 39-01 | -- | 598 57 95-01 |
| 42 | 596 95 22-01 | | |
| 43 | 582 21 96-02 | | |
| 46 | 532 13 77-29 | | |
| 47 | 582 23 63-01 | | |
| 48 | 574 19 65-02 | | |

NOTE: All component dimensions given in U.S. inches
1 inch = 25.4 mm

TRACTOR - - MODEL NO. TS 354 (96041042800), PRODUCT NO. 960 41 04-28
MOWER LIFT 45



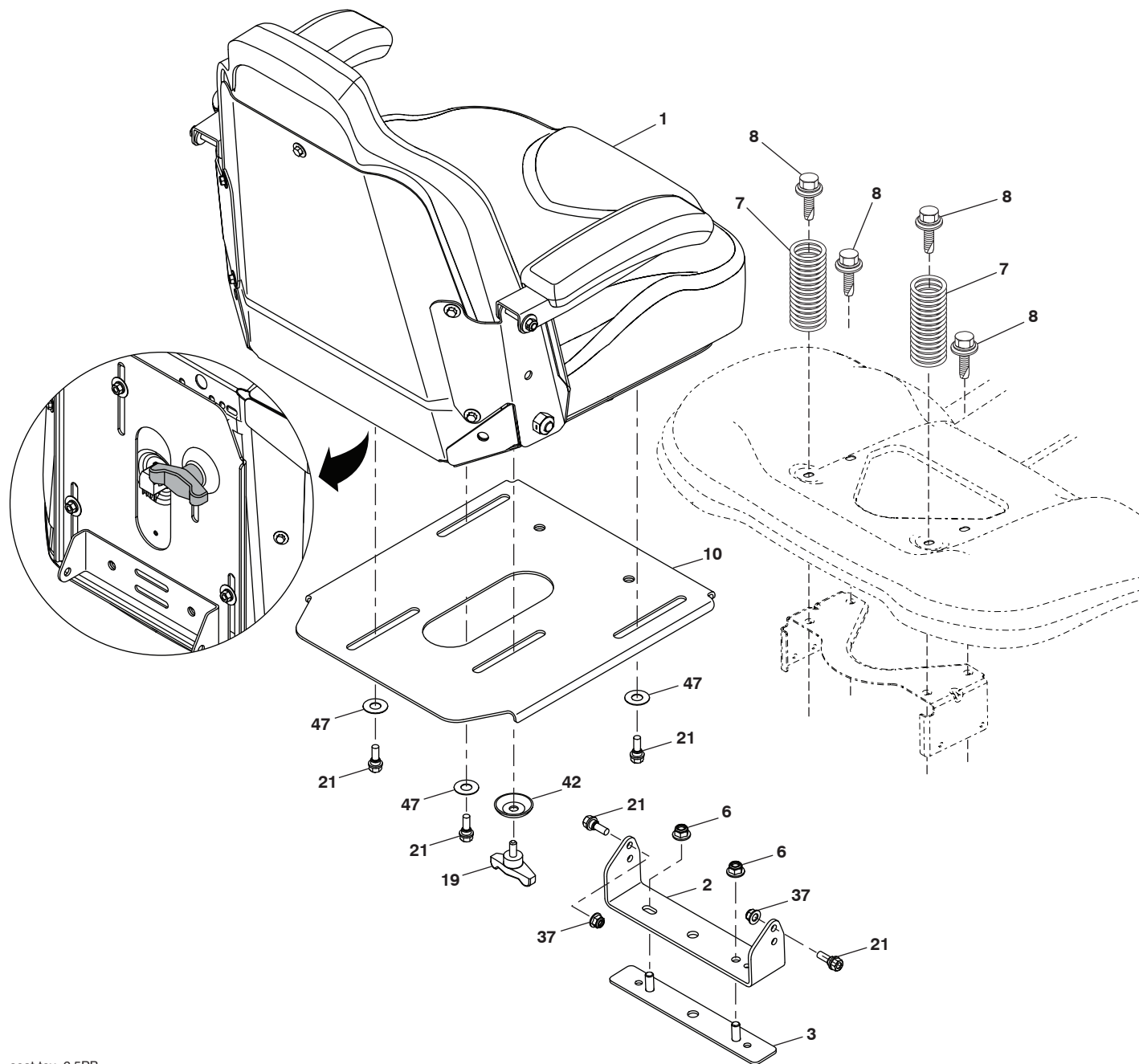
lift-tex_24

| KEY NO. | PART NO. | DESCRIPTION |
|---------|--------------|----------------------------------|
| 2 | 532 42 20-27 | Shaft Asm., Lift |
| 3 | 596 27 06-01 | Lever, Lift, Handle, Clear, Zinc |
| 7 | 580 96 23-01 | Grip, Lever |
| 10 | 532 19 63-14 | Spring Torsion |
| 41 | 589 46 49-02 | Nut, Lift, Link, Clr. Zn. |
| 87 | 532 19 42-09 | Pin Cotter 7/16 Bow Tie Lock |
| 88 | 532 19 53-01 | Spring, Lift, Assist, Gt. Black |
| 89 | 819 19 19-12 | Washer Clear Zinc |

| KEY NO. | PART NO. | DESCRIPTION |
|---------|--------------|-----------------------------|
| 91 | 589 46 48-05 | Link, Assy. Lift, Rear |
| 96 | 593 84 21-01 | Bushing |
| 97 | 817 00 06-12 | Screw 3/8-16 x .75 |
| 98 | 589 31 87-03 | Link Lift Susp. Front Mower |
| 114 | 873 36 07-00 | Nut Jam 7/16-20 |

NOTE: All component dimensions given in U.S. inches
 1 inch = 25.4 mm

**TRACTOR - - MODEL NO. TS 354 (96041042800), PRODUCT NO. 960 41 04-28
SEAT ASSEMBLY 42**



seat-tex_6.5PB

| KEY NO. | PART NO. | DESCRIPTION |
|---------|--------------|--------------------------------|
| 1 | 590 33 73-01 | Seat |
| 2 | 590 33 66-02 | Bracket Pivot Fender |
| 3 | 590 77 76-02 | Brkt, Asm Fender |
| 6 | 521 99 65-02 | Nut, Hex. Lock W/Flange 3/8-16 |
| 7 | 590 81 23-01 | Spring, Seat Cprsn |
| 8 | 532 17 18-77 | Bolt 5/16-18 unc x 3/4 w/Sems |
| 10 | 590 48 17-02 | Seat, Plate, Brkt. |
| 19 | 590 69 15-01 | Knob Seat 5/16-18 x 3/4 |

| KEY NO. | PART NO. | DESCRIPTION |
|---------|--------------|-----------------------------------|
| 21 | 596 23 11-01 | Bolt, Hex. Washer 5/16-18 x .910 |
| 37 | 594 94 44-01 | Nut, Hex. Flng 5/16-18 Nyloc, Clr |
| 42 | 532 19 93-71 | Washer Cup |
| 47 | 590 35 11-01 | Washer Nylon 50 x 1.12 x 003 |

NOTE: All component dimensions given in U.S. inches
1 inch = 25.4 mm

