

**ILLUSTRATED PARTS LIST**

**MODEL NUMBER ST 224**

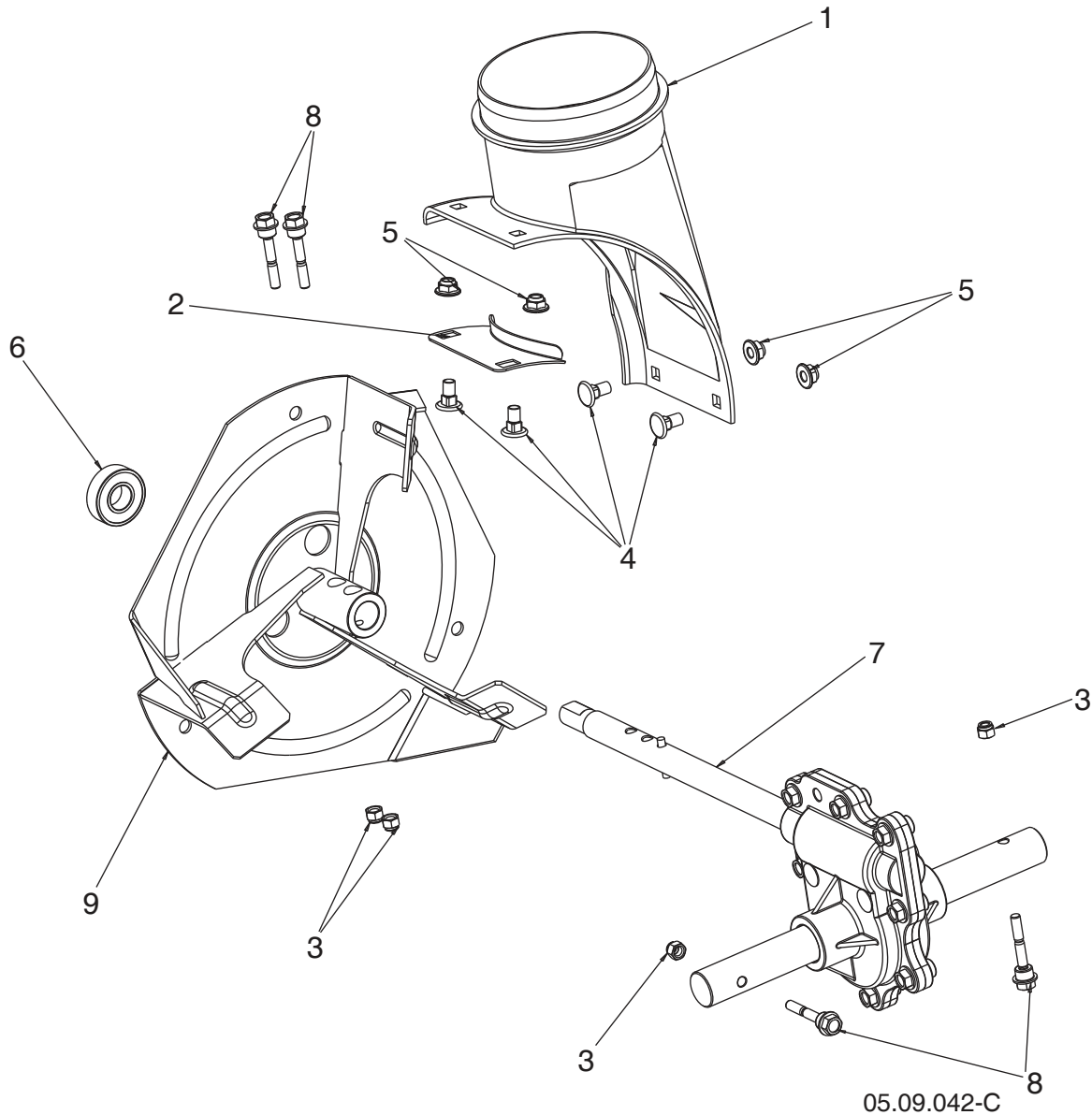
**PRODUCT NUMBER 970 46 86-01**

**MFG. ID. NUMBER 97046860100**

# REPAIR PARTS

# AUGER HOUSING / IMPELLER ASSEMBLY

SNOW THROWER - MODEL NO. **ST 224** (97046860100), PRODUCT NO. 970 46 86-01



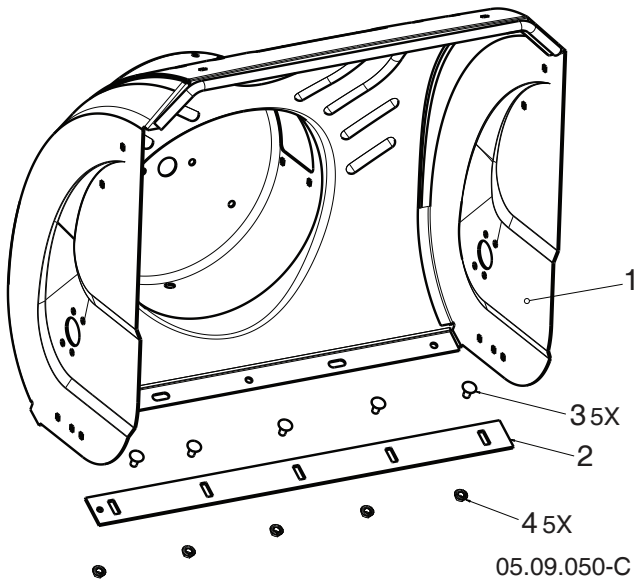
Ref.	Part No.	Description
1	585 05 69-01	CHUTE.DISCHARGE.BASE
2	597 43 30-02	BRACKET.CORNER.DISCHARGE.
3	595 08 66-01	NUT.HEX.NYLOC.1/4-20
4	585 69 12-01	BOLT CAR WAF BLK 5/16-18 X .488
5	585 69 13-01	NUT.HEX.FLANGE.5/16-18 NYLOCK
6	532 19 87-91	BEARING.1501389.BALL
7	597 67 19-01	TRANSMISSION.GEARBOX.ALUM.DD
8	588 07 75-02	BOLT. 1/4-20 X 1- 13/16 SHEAR
9	586 60 72-02	IMPELLER.STEEL.SNOW.479

**NOTE:** All component dimensions given in U.S. inches. 1 inch = 25.4 mm  
**IMPORTANT:** Use only Original Equipment Manufacturer (O.E.M.) replacement parts. Failure to do so could be hazardous, damage your snow thrower and void your warranty.

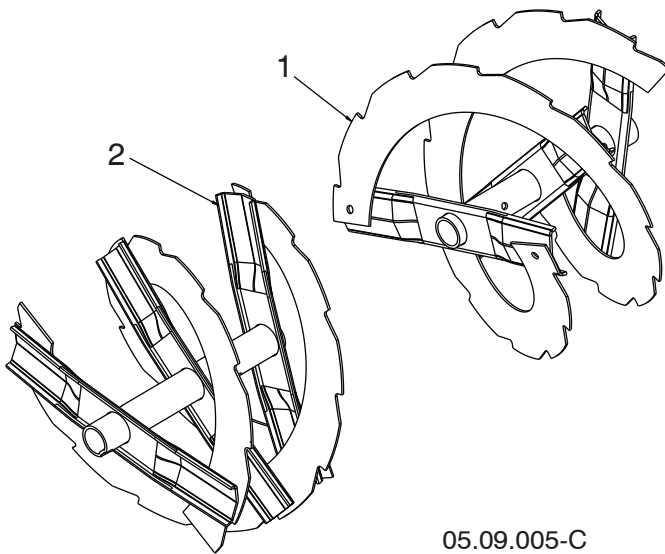
# REPAIR PARTS

# AUGER HOUSING / IMPELLER ASSEMBLY

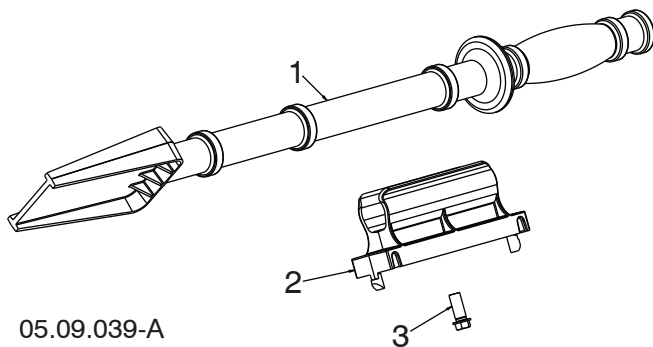
SNOW THROWER - MODEL NO. ST 224 (97046860100), PRODUCT NO. 970 46 86-01



Ref.	Part No.	Description
1	581 70 83-90	AUGER HOUSING
2	532 41 62-15	SCRAPER BAR
3	596 03 94-01	CARRIAGE BOLT 5/16-18 X .625 GR5
4	596 03 92-01	NUT 5/19-18



Ref.	Part No.	Description
1	587 19 10-01	AUGER WELD RIB LH 24
2	585 54 42-01	AUGER WELD RIB RH 24



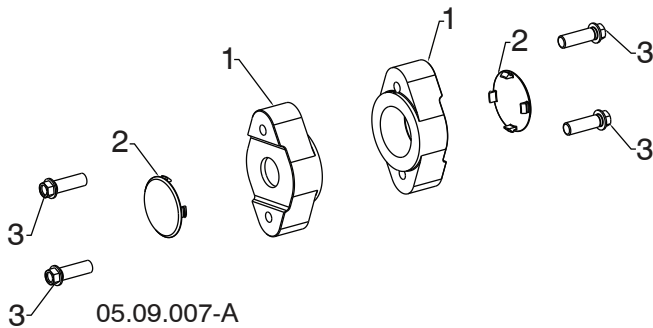
Ref.	Part No.	Description
1	532 19 21-99	TOOL CLEANOUT
2	532 40 54-00	CLIP CLEANOUT TOOL
3	532 19 41-89	SCREW HEX WASHER 13-16 X 5/8

**NOTE:** All component dimensions given in U.S. inches. 1 inch = 25.4 mm  
**IMPORTANT:** Use only Original Equipment Manufacturer (O.E.M.) replacement parts. Failure to do so could be hazardous, damage your snow thrower and void your warranty.

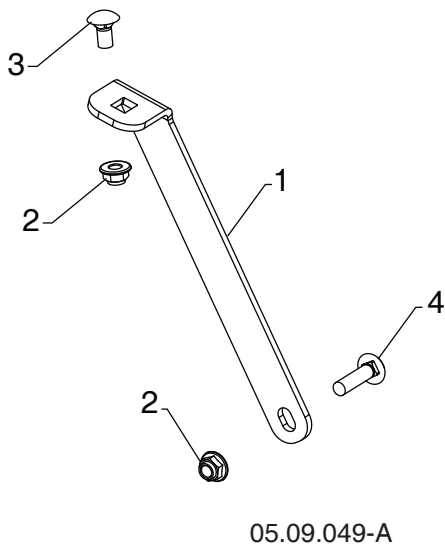
# REPAIR PARTS

# AUGER HOUSING / IMPELLER ASSEMBLY

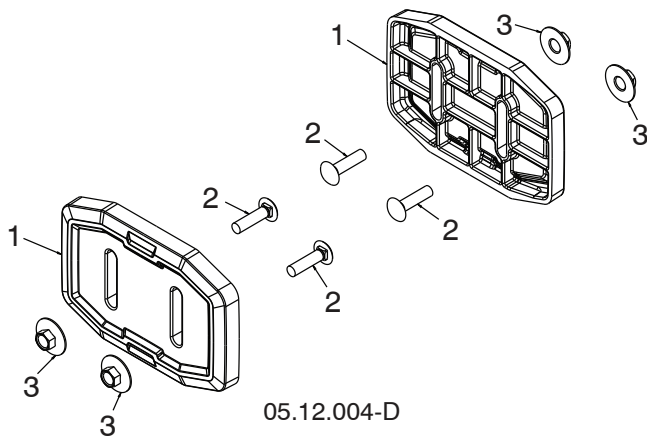
SNOW THROWER - MODEL NO. **ST 224** (97046860100), PRODUCT NO. 970 46 86-01



Ref.	Part No.	Description
1	532 42 04-78	AUGER BEARING
2	532 41 19-39	BEARING PLUG
3	584 29 94-01	SCREW HI-LO WASHD 5/16-14 X 1.00



Ref.	Part No.	Description
1	589 32 30-02	SUPPORT GEARBOX LS
2	585 69 13-01	NUT HEX FLG NYLOCK BLK 5/16-18
3	585 83 20-01	BOLT CARRIAGE BLK 5/16-18 X 5/8 BLK
4	872 11 05-10	BOLT CARRIAGE 5/16-18 X 1-1/4



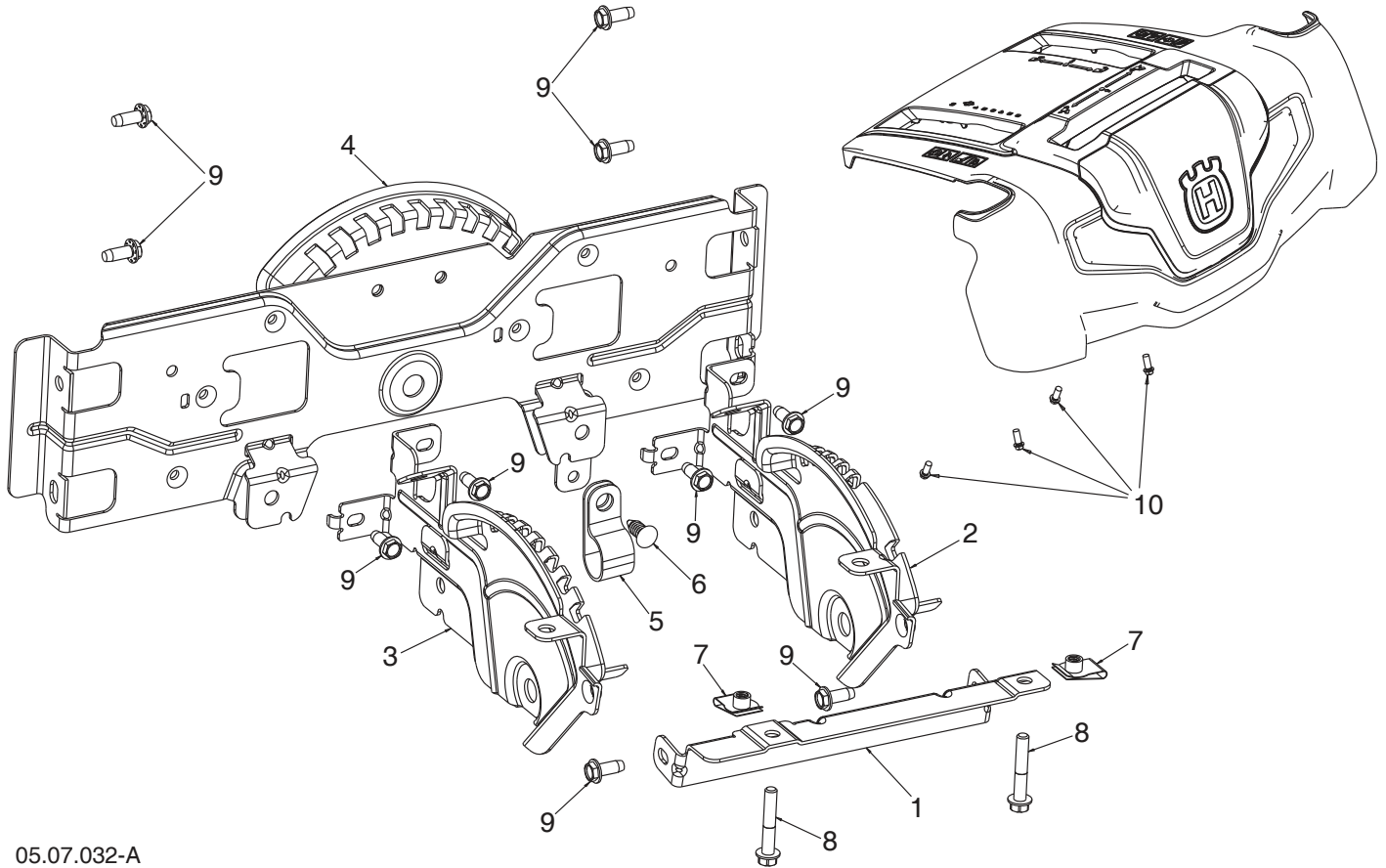
Ref.	Part No.	Description
1	583 83 88-01	SKID SHOW UHMW
2	585 80 29-01	BOLT CARR BLK 5/16-18 X 1.25
3	585 80 28-01	NUT HEX 5/16-18 LRG FLG

**NOTE:** All component dimensions given in U.S. inches. 1 inch = 25.4 mm  
**IMPORTANT:** Use only Original Equipment Manufacturer (O.E.M.) replacement parts. Failure to do so could be hazardous, damage your snow thrower and void your warranty.

# REPAIR PARTS

# CONTROL PANEL / DISCHARGE CHUTE

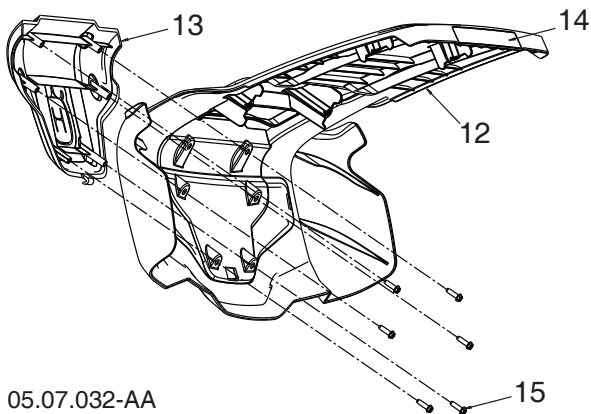
SNOW THROWER - MODEL NO. ST 224 (97046860100), PRODUCT NO. 970 46 86-01



05.07.032-A

Ref.	Part No.	Description
1	597 99 19-02	BRACKET REAR MNT
2	597 99 22-02	BRACKET ASM SPEED CONTROL
3	597 99 23-02	BRACKET ASM DEFLECTOR CONTROL
4	597 99 24-02	BRACKET ASM FRONT MNT
5	532 19 79-91	P-CLIP
6	532 42 81-24	FIR TREE FASTENER

Ref.	Part No.	Description
7	532 41 76-93	1/4-20 U-NUT
8	501 40 66-01	SCREW HEX HD 1/4-20 X 1.50
9	817 06 04-10	SCREW HEX WASHER HD 1/4-20 X 5/8
10	532 19 41-89	SCREW HI-LO 13-16 X 5/8 HEX WASHER HD



05.07.032-AA

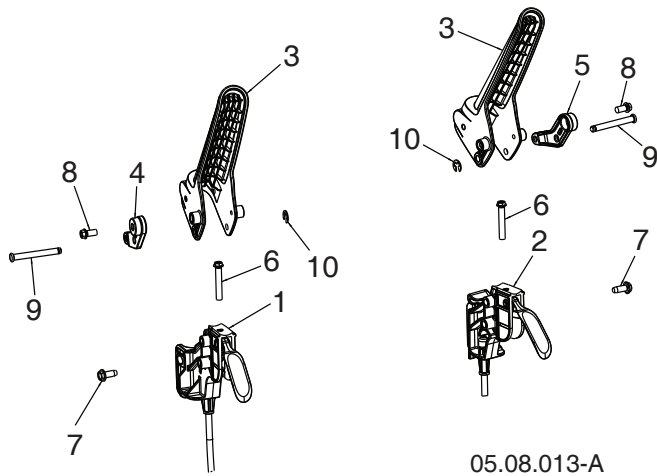
Ref.	Part No.	Description
12	598 80 37-01	CONSOLE BASE
13	598 80 38-01	CONSOLE APPLIQUE
14	598 81 20-01	WARNING DECAL - SNOW
15	532 16 34-09	FLANGE HEAD SCREW 12-16 HI-LOW X .625L

**NOTE:** All component dimensions given in U.S. inches. 1 inch = 25.4 mm  
**IMPORTANT:** Use only Original Equipment Manufacturer (O.E.M.) replacement parts. Failure to do so could be hazardous, damage your snow thrower and void your warranty.

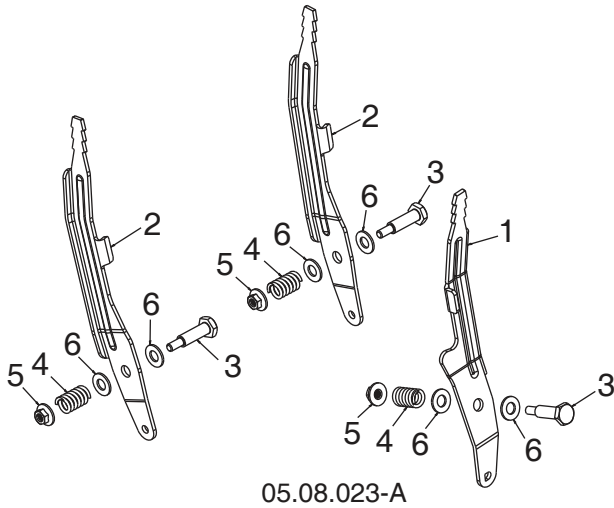
# REPAIR PARTS

# CONTROL PANEL / DISCHARGE CHUTE

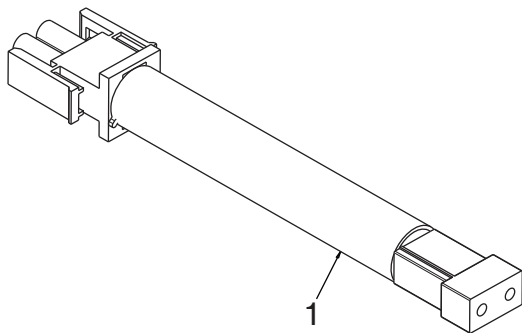
SNOW THROWER - MODEL NO. ST 224 (97046860100), PRODUCT NO. 970 46 86-01



Ref.	Part No.	Description
1	588 26 39-01	CABLE, POWER STEER - LHS
2	588 26 39-02	CABLE, POWER STEER - RHS
3	587 46 30-01	LEVER, CONTROL
4	587 73 97-01	LEVER, CABLE ARM - LHS
5	587 73 97-02	LEVER, CABLE ARM - RHS
6	581 32 95-01	SCREW HI-LO 13-16 X 1.50
7	817 06 04-10	SCREW 1/4-20 X .625
8	817 41 13-08	SCREW HI-LW 13-16 X .500
9	588 14 77-01	PIN, GROOVED
10	812 00 00-14	E-RING



Ref.	Part No.	Description
1	596 78 68-02	LEVER CONTROL CHUTE ROTATOR D HOLE
2	581 12 39-02	LEVER CONTROL SPEED/DEFLECTOR
3	581 32 97-02	BOLT SHOULDER 1/4-20
4	581 32 96-01	SPRING COMPRESSION
5	586 66 89-01	NUT FL LOCK 1/4-20
6	532 17 92-46	WASHER NYLON .375ID x .750OD x .062THK



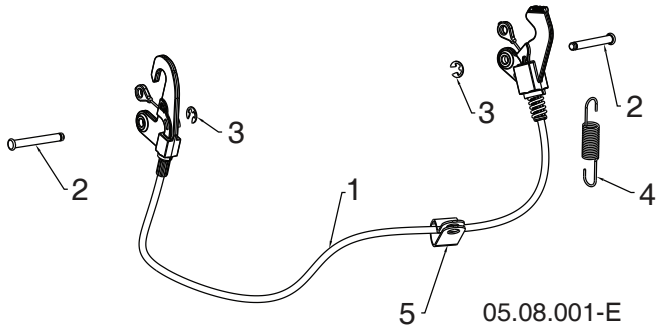
Ref.	Part No.	Description
1	598 45 87-01	HARNESS ELEC JUMPER LIGHT TO ENGINE

**NOTE:** All component dimensions given in U.S. inches. 1 inch = 25.4 mm  
**IMPORTANT:** Use only Original Equipment Manufacturer (O.E.M.) replacement parts. Failure to do so could be hazardous, damage your snow thrower and void your warranty.

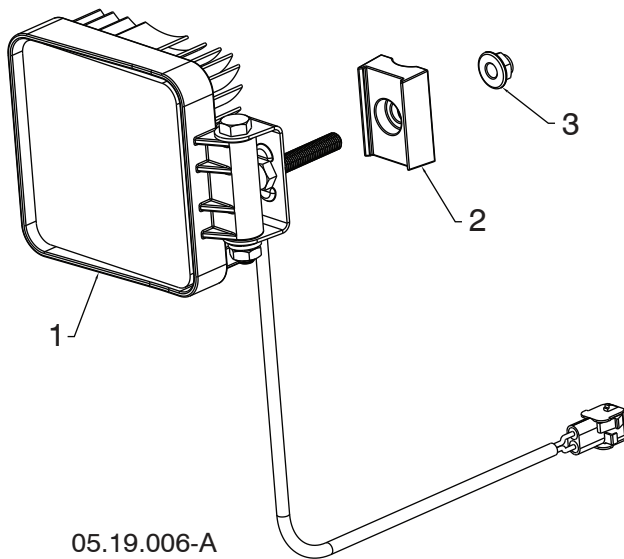
# REPAIR PARTS

# CONTROL PANEL / DISCHARGE CHUTE

SNOW THROWER - MODEL NO. ST 224 (97046860100), PRODUCT NO. 970 46 86-01



Ref.	Part No.	Description
1	593 85 34-01	CABLE INTERLOCK
2	532 43 17-62	PIN GROOVED
3	812 00 00-14	E-RING
4	581 15 12-02	SPRING RETURN
5	532 19 79-91	CLIP CABLE BLACK



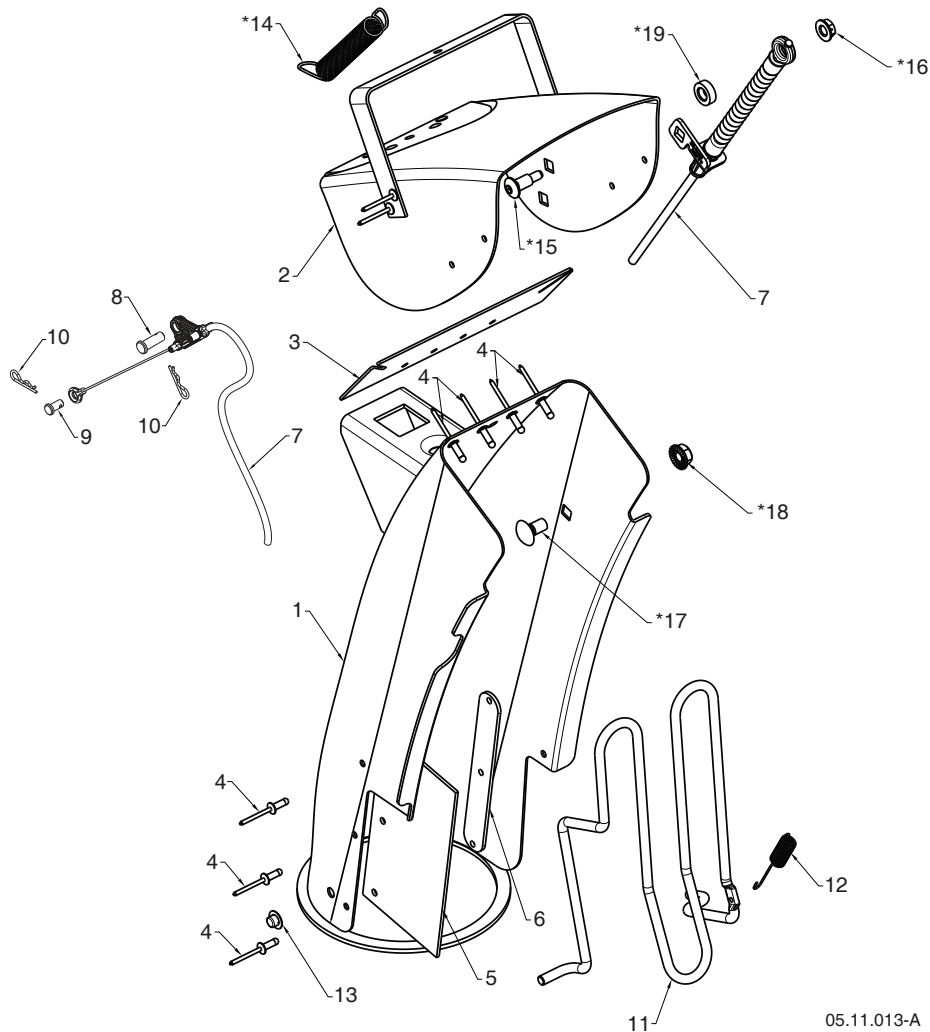
Ref.	Part No.	Description
1	590 07 13-01	4.25 X 4.25 LIGHT
2	590 73 98-01	LIGHT MOUNTING BRACKET
3	594 94 44-01	HEX HD 5/16-18 FLANGE NYLOCK

**NOTE:** All component dimensions given in U.S. inches. 1 inch = 25.4 mm  
**IMPORTANT:** Use only Original Equipment Manufacturer (O.E.M.) replacement parts.  
 Failure to do so could be hazardous, damage your snow thrower and void your warranty.

# REPAIR PARTS

# CONTROL PANEL / DISCHARGE CHUTE

SNOW THROWER - MODEL NO. **ST 224** (97046860100), PRODUCT NO. 970 46 86-01



05.11.013-A

Ref.	Part No.	Description
1	588 07 78-02	CHUTE WELDMENT (INCLUDES 1, 2, 3, 4, 5, 6)
2	-----	DEFLECTOR WELDMENT
3	-----	DEFLECTOR SEAL
4	-----	POP RIVET
5	-----	CHUTE SNOW SHIELD
6	-----	SHIELD STRAP RETAINER
7	598 45 05-01	CONTROL.CHUTE.DEFLECTOR. BOWDEN
8	581 32 94-01	PIN CLEVIS 5/16 X .875
9	585 80 83-01	PIN CLEVIS 1/4 X .312
10	532 42 33-03	HAIRPIN RETAINER

Ref.	Part No.	Description
11	593 62 22-01	CHUTE GUARD
12	532 43 56-16	GUARD RETURN SPRING
13	532 05 93-49	PUSH NUT
*14	532 18 45-05	DEFLECTOR SPRING
*15	501 41 73-01	CARRIAGE BOLT 1/4-20 X .544
*16	585 69 14-01	NUT 1/4-20
*17	585 83 20-01	CARRIAGE BOLT 3/8-16 X .625
*18	873 97 05-00	NUT 5/16-18
*19	501 41 74-01	WASHER .326 X .625 X .205 NYLON

**NOTE:** ALL ITEMS MARKED WITH AN \* ARE PROVIDED IN THE BAG OF ITEMS SHIPPED LOOSE WITH PRODUCT.

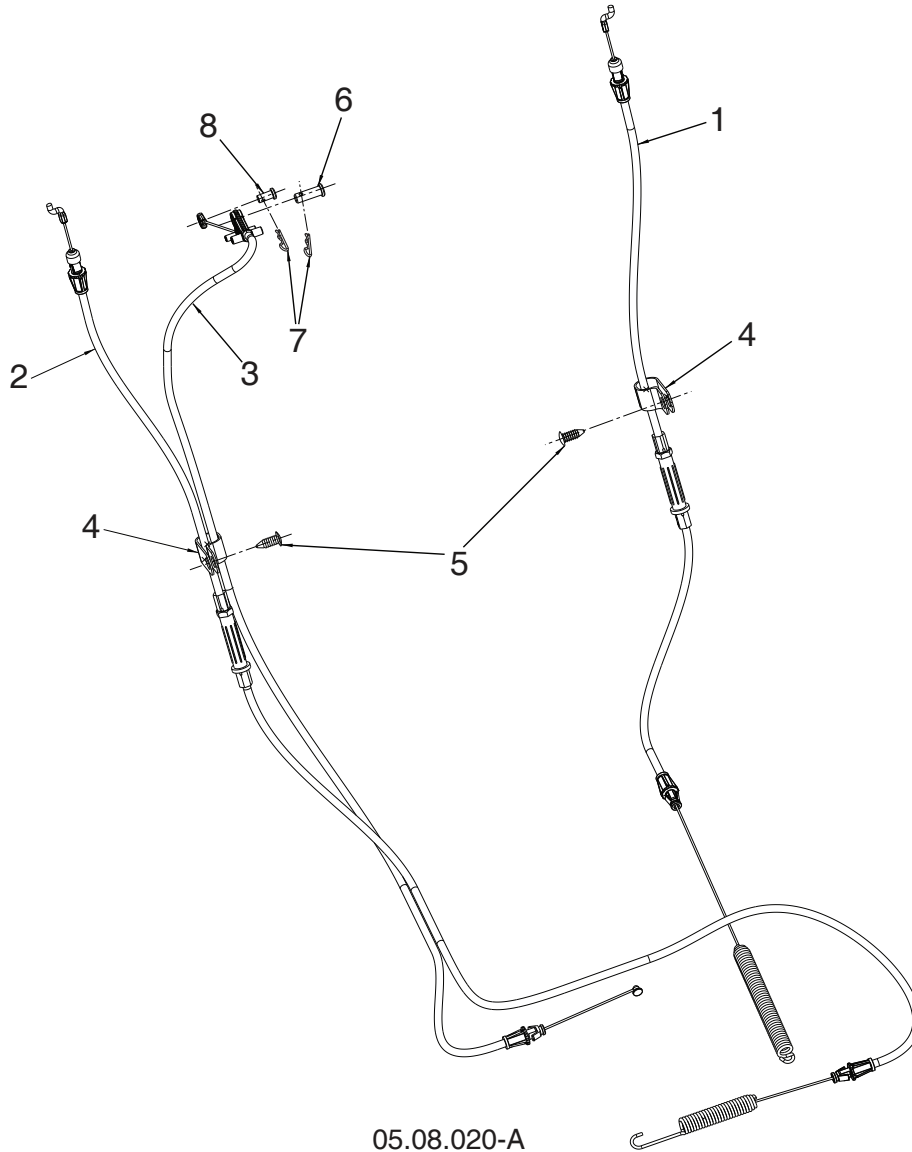
**NOTE:** All component dimensions given in U.S. inches. 1 inch = 25.4 mm  
**IMPORTANT:** Use only Original Equipment Manufacturer (O.E.M.) replacement parts. Failure to do so could be hazardous, damage your snow thrower and void your warranty.



# REPAIR PARTS

# CONTROL PANEL / DISCHARGE CHUTE

SNOW THROWER - MODEL NO. **ST 224** (97046860100), PRODUCT NO. 970 46 86-01



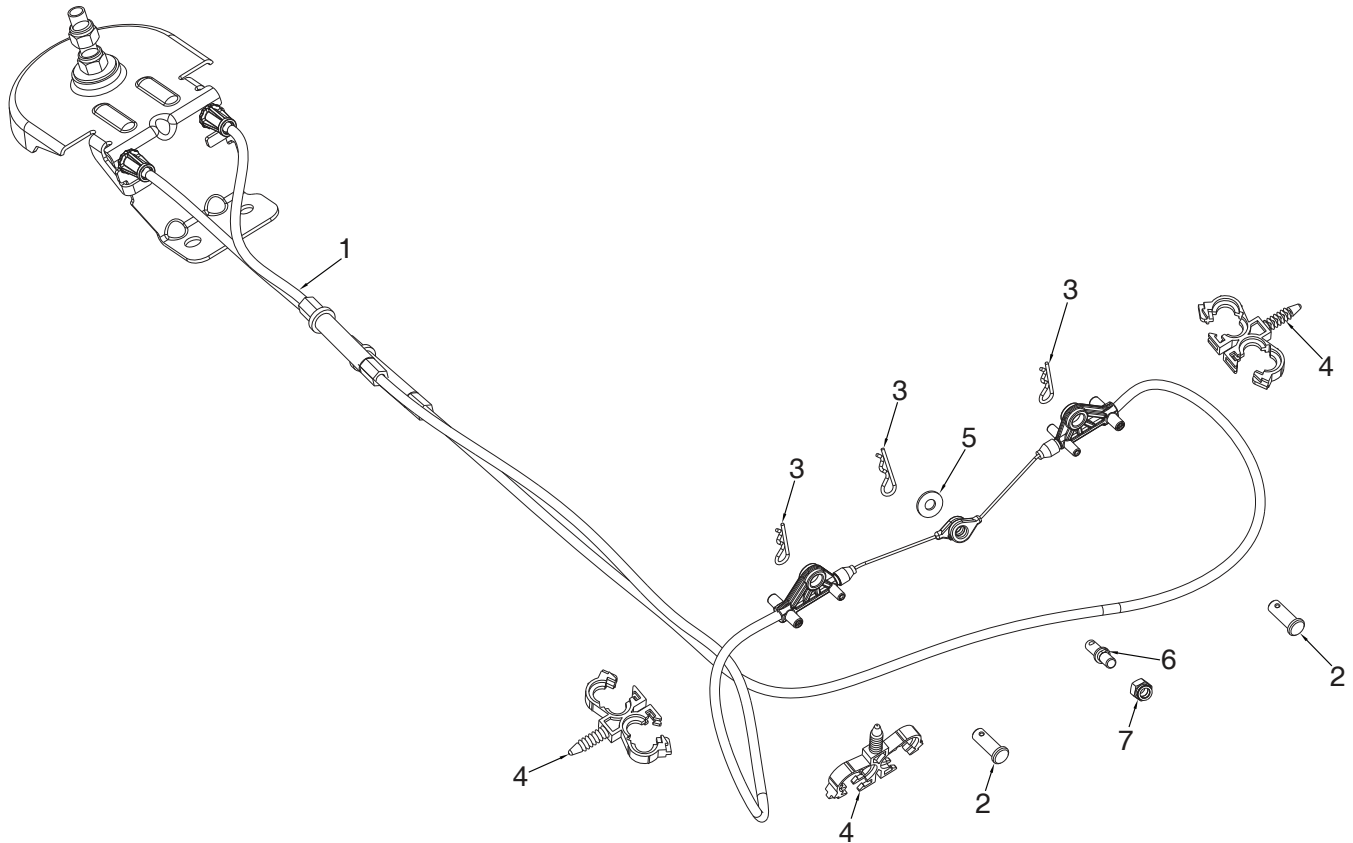
Ref.	Part No.	Description
1	582 51 90-02	CABLE CONTROL DRIVE
2	588 11 38-02	CABLE CONTROL AUGER
3	598 45 04-01	CABLE CONTROL SPEED
4	532 19 79-91	CLIP CABLE
5	532 42 81-24	FASTENER PUSH .250
6	581 32 94-01	PIN CLEVIS 5/16
7	532 42 33-03	HAIRPIN
8	585 80 83-01	PIN CLEVIS 1/4

**NOTE:** All component dimensions given in U.S. inches. 1 inch = 25.4 mm  
**IMPORTANT:** Use only Original Equipment Manufacturer (O.E.M.) replacement parts. Failure to do so could be hazardous, damage your snow thrower and void your warranty.

# REPAIR PARTS

# CONTROL PANEL / DISCHARGE CHUTE

SNOW THROWER - MODEL NO. **ST 224** (97046860100), PRODUCT NO. 970 46 86-01



05.08.022-A

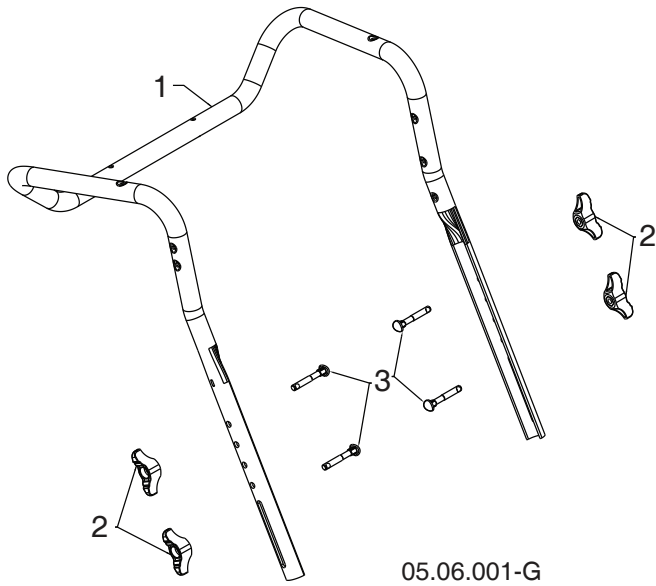
Ref.	Part No.	Description
1	598 80 34-01	CABLE ROTATOR ASM
2	581 32 94-01	PIN CLEVIS 5/16 X 7/8
3	532 42 33-03	HAIRPIN SOFT ZINC
4	584 65 22-01	CLIP CONDUIT DOUBLE
5	586 68 21-01	WASHER FLAT NYLON
6	596 71 72-01	CLEVIS RIGID PIN 5/16 X 1
7	595 08 66-01	NUT 1/4-20 HEX NYLOC

**NOTE:** All component dimensions given in U.S. inches. 1 inch = 25.4 mm  
**IMPORTANT:** Use only Original Equipment Manufacturer (O.E.M.) replacement parts. Failure to do so could be hazardous, damage your snow thrower and void your warranty.

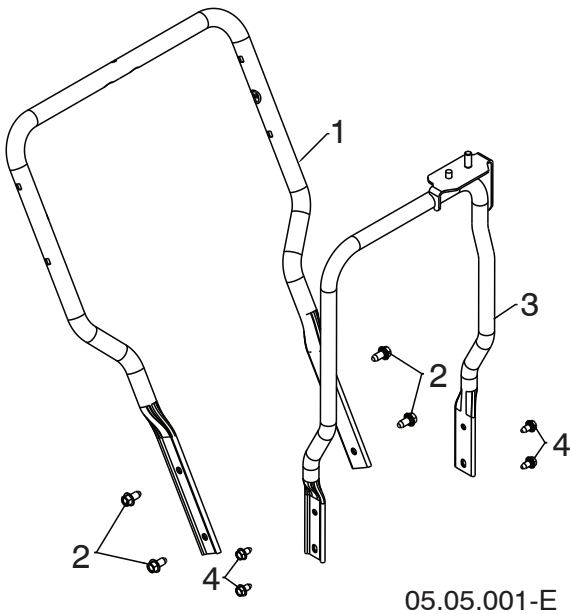
# REPAIR PARTS

# HANDLES

SNOW THROWER - MODEL NO. ST 224 (97046860100), PRODUCT NO. 970 46 86-01



Ref.	Part No.	Description
1	588 16 08-03	UPPER HANDLE
2	532 19 19-38	HANDLE KNOB STD BLACK
3	588 05 99-01	SCREW 5/16-18 X 2.25 CONCAVE HEAD WITH PATCH



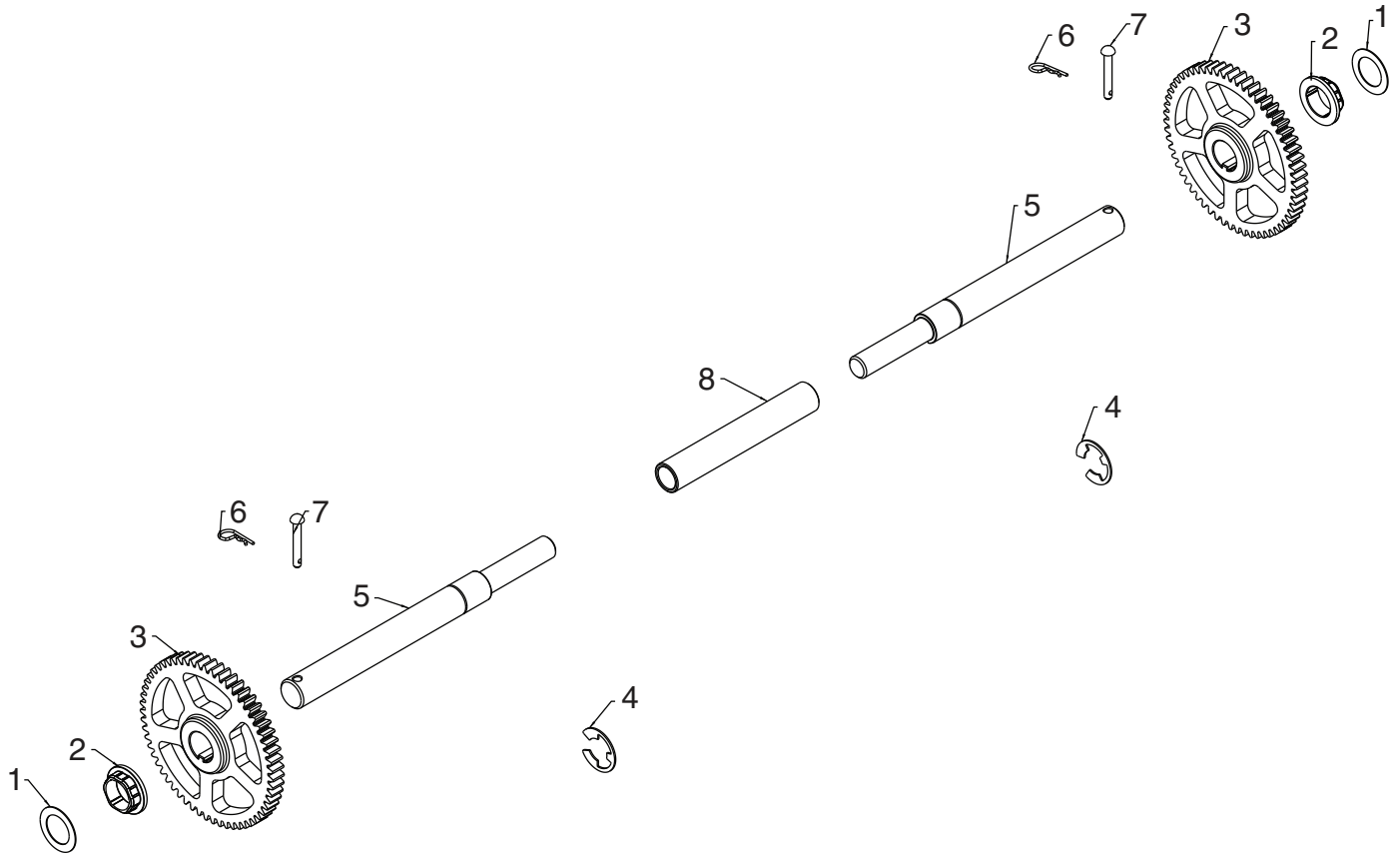
Ref.	Part No.	Description
1	588 67 21-03	LOWER HANDLE
2	817 00 06-12	SCREW HEX WASH HD 3/8-16 X .75
3	589 26 45-04	CHUTE ROTATOR SUPPORT ASM
4	817 00 05-10	BOLT HEX 5/16-18

**NOTE:** All component dimensions given in U.S. inches. 1 inch = 25.4 mm  
**IMPORTANT:** Use only Original Equipment Manufacturer (O.E.M.) replacement parts. Failure to do so could be hazardous, damage your snow thrower and void your warranty.

# REPAIR PARTS

# DRIVE

SNOW THROWER - MODEL NO. **ST 224** (97046860100), PRODUCT NO. 970 46 86-01



05.03.002-B

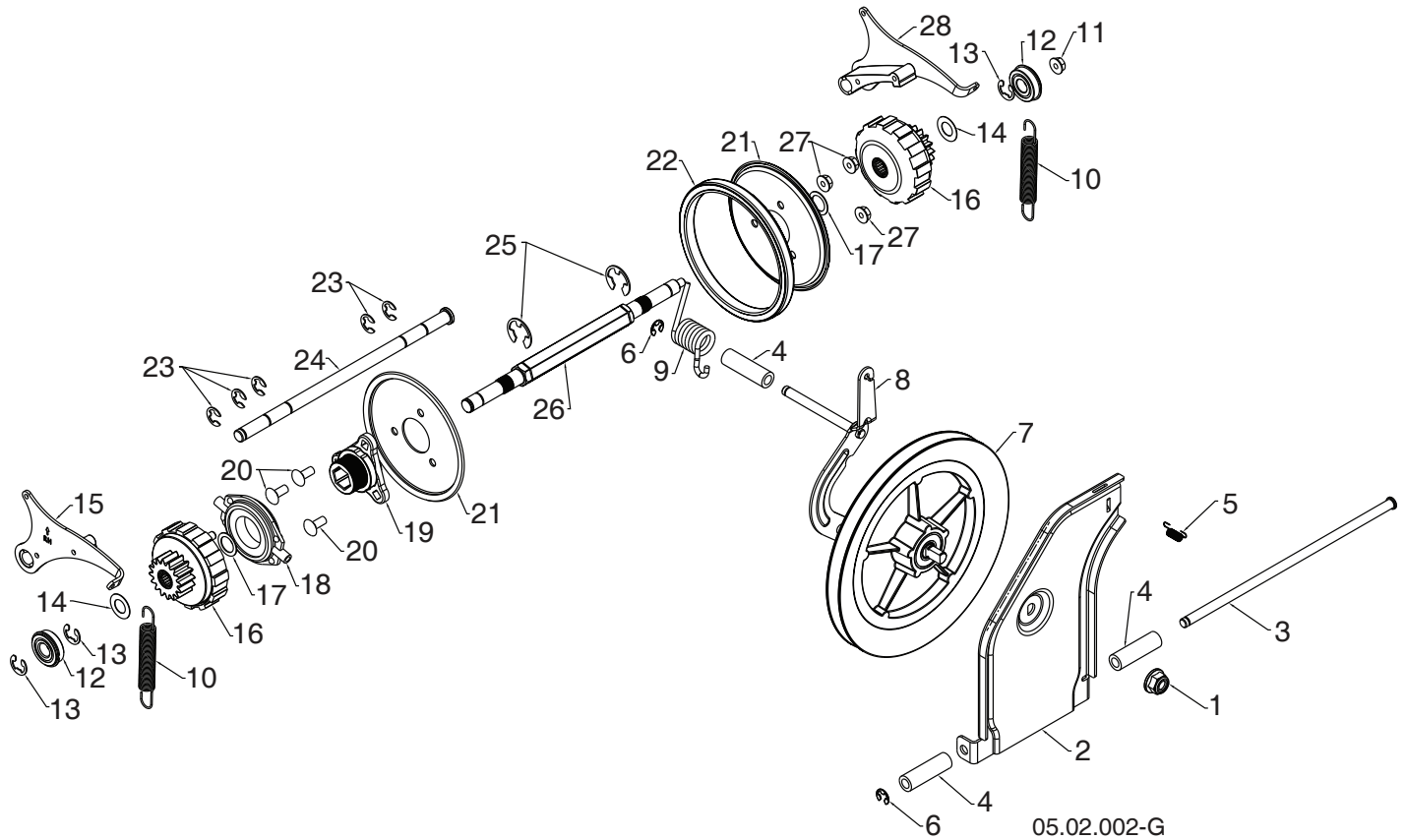
Ref.	Part No.	Description
1	532 44 49-49	WASHER 1.00
2	587 97 89-01	BUSHING HEX 1 SHAFT
3	588 51 86-01	GEAR 59T DRIVEN
4	812 00 00-53	RETAINING RING
5	580 75 26-01	AXLE SHAFT SPLIT
6	532 12 47-88	RETAINER SPRING 1 ZINC
7	532 17 12-71	RIVET RD HD DRILLED 1/4 DIA
8	580 75 25-01	AXLE SLEEVE

**NOTE:** All component dimensions given in U.S. inches. 1 inch = 25.4 mm  
**IMPORTANT:** Use only Original Equipment Manufacturer (O.E.M.) replacement parts. Failure to do so could be hazardous, damage your snow thrower and void your warranty.

# REPAIR PARTS

# DRIVE

## SNOW THROWER - MODEL NO. ST 224 (97046860100), PRODUCT NO. 970 46 86-01



Ref.	Part No.	Description
1	521 99 11-01	NUT HEX FLANGE LK 1/2-13
2	587 70 34-02	SWING PLATE FRICTION PULL
3	581 12 30-02	ROD TIP PLATE
4	595 84 11-01	SPACER DRIVE
5	532 19 38-85	LATCH SPRING
6	812 00 00-07	E-RING RETAINER
7	581 32 84-01	FRICTION DISC COMBO PULLEY
8	587 19 34-03	BRACKET YOKE ASSEMBLY
9	581 31 53-01	SPRING TORSION DRIVE
10	585 26 38-01	EXTENSION SPRING
11	585 69 15-01	NUT HEX FLANGE LOCK 5/16-18
12	580 75 62-01	BEARING 9/16 I.D. 1622-2RSNR
13	580 75 61-02	RETAINING RING 1622-2RSNR
14	580 75 13-01	WASHER FLAT .59 I.D. X 1.065 X 25 GA

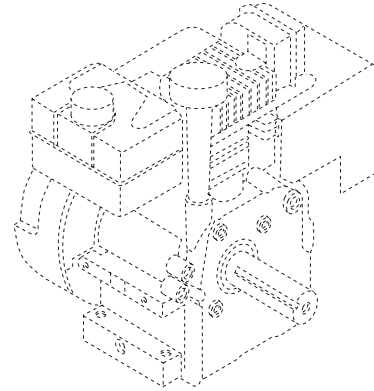
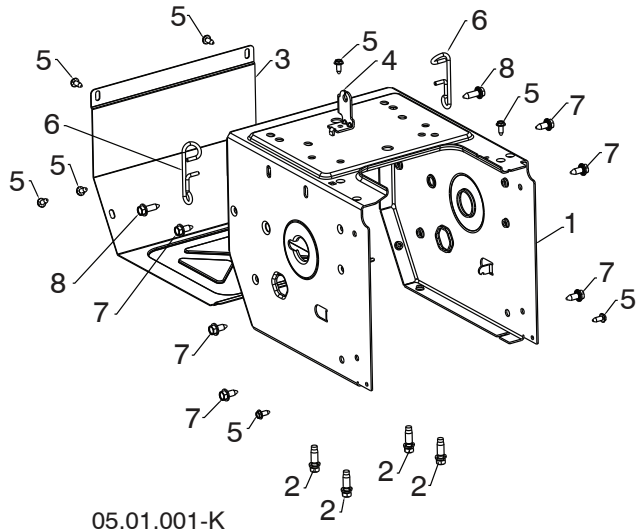
Ref.	Part No.	Description
15	580 75 66-01	PAWL ASM RH
16	580 75 60-01	GEAR ASM PLANETARY
17	580 75 63-01	WASHER FLAT .6875 I.D. X 1.00 X 21 GA
18	532 17 53-44	TRUNNION BEARING ASM
19	581 09 09-01	HUB RUBBER WHEEL
20	872 11 05-06	BOLT CARRIAGE 5/16-18 X .75
21	581 09 10-02	PLATE RUBBER WHEEL
22	581 09 11-01	RING RUBBER WHEEL
23	586 64 43-01	E-RING
24	580 75 51-01	ROD PAWL
25	812 00 00-22	E-RING
26	580 75 24-01	SHAFT REDUCTION PWR STR
27	532 75 11-53	NUT HEX FLANGE LK 5/16-18
28	580 75 67-01	PAWL ASM LH

**NOTE:** All component dimensions given in U.S. inches. 1 inch = 25.4 mm  
**IMPORTANT:** Use only Original Equipment Manufacturer (O.E.M.) replacement parts. Failure to do so could be hazardous, damage your snow thrower and void your warranty.

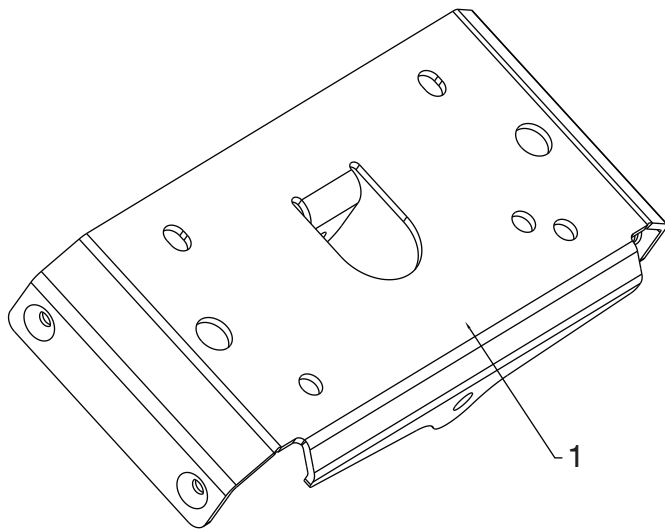
# REPAIR PARTS

# CHASSIS / ENGINE / PULLEYS

SNOW THROWER - MODEL NO. **ST 224** (97046860100), PRODUCT NO. 970 46 86-01



Ref.	Part No.	Description
--	590 21 86-05	COMPLETE LCT ENGINE PW2HK18650178Y
1	580 83 94-05	FRAME
2	532 15 04-06	ENGINE BOLT 3/8-16 X 1.280 DOG-POINT
3	580 83 95-05	FRAME COVER
4	501 06 04-03	SHIFTER BRACKET
5	582 90 69-01	SCREW HEX WASHER 1/4-20 X .625
6	588 95 45-01	WIREFORM SUPPORT CABLE
7	532 42 88-67	BOLT HEXHD WASHER 5/16-18 X .750
8	593 33 72-01	BOLT HEXHD WASHER 5/16-18 X 1.000



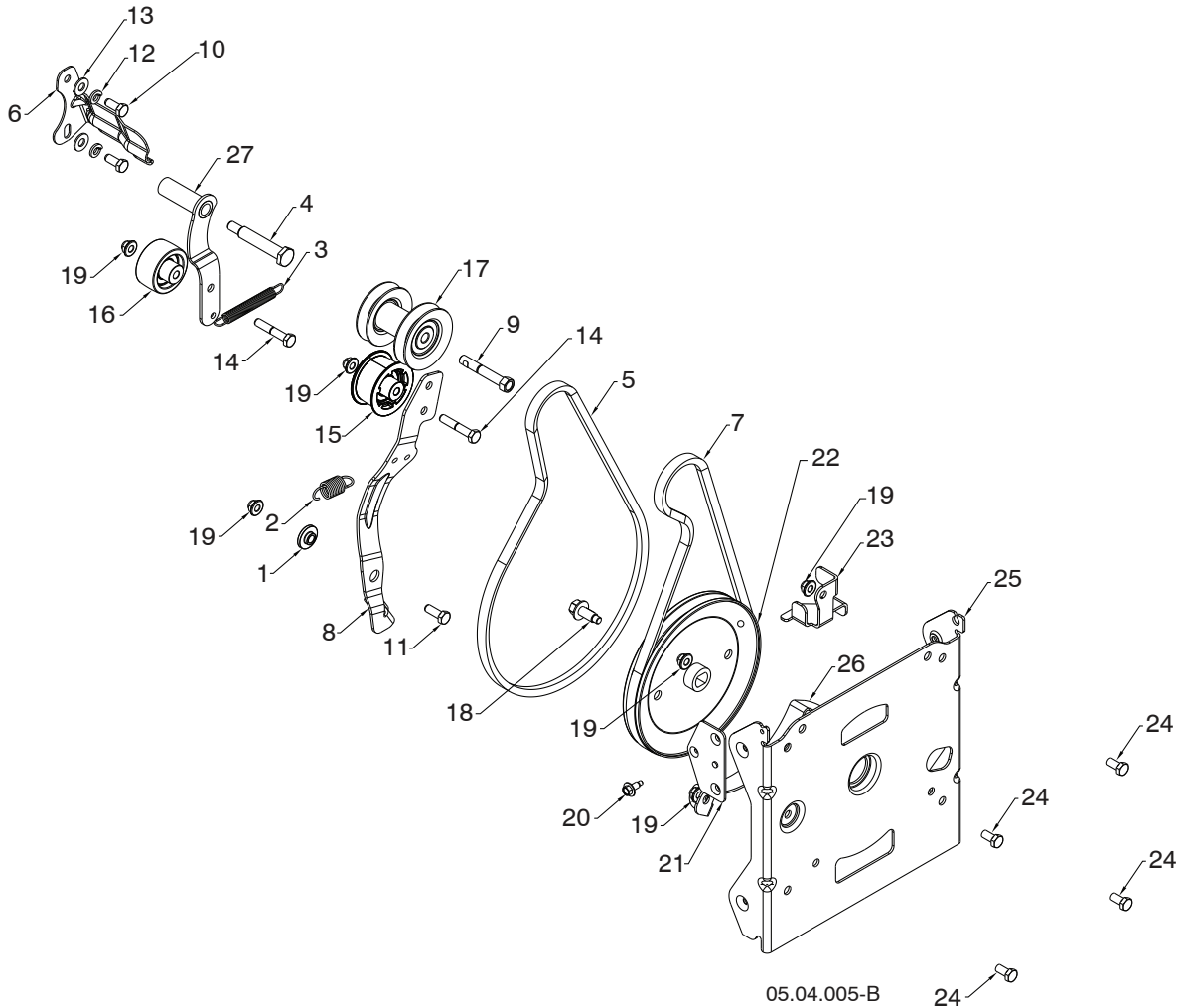
Ref.	Part No.	Description
1	583 94 05-02	SMALL MOUNTING PLATE

**NOTE:** All component dimensions given in U.S. inches. 1 inch = 25.4 mm  
**IMPORTANT:** Use only Original Equipment Manufacturer (O.E.M.) replacement parts. Failure to do so could be hazardous, damage your snow thrower and void your warranty.

# REPAIR PARTS

# CHASSIS / ENGINE / PULLEYS

## SNOW THROWER - MODEL NO. ST 224 (97046860100), PRODUCT NO. 970 46 86-01



Ref.	Part No.	Description
1	587 34 37-01	BUSHING BRAKE ARM
2	587 03 12-01	SPRING RETURN IDLER ARM
3	580 75 30-01	SPRING RETURN IDLER ARM
4	581 41 38-01	BOLT SHOULDER 5/16-24 X 2.15
5	584 21 61-02	BELT DRIVE 4L X 38.19
6	588 49 28-02	BRACKET BELT KEEPER 007
7	501 81 82-01	BELT IMPELLER LOW CRANK
8	580 83 11-06	ARM IDLER AUTO PH .676
9	582 38 84-01	BOLT ENGINE PULLEY
10	581 41 38-01	CAPSCREW HEXHD 5/16-24 X .75 GR5
11	596 32 22-01	BOLT HEXHD 5/16-18 X .875
12	596 23 88-01	LOCKWASHER 5/16 SPLIT HVY
13	596 20 41-01	WASHER 11/32 X 3/4 X 16GA
14	874 76 05-28	BOLT HXHD 5/16-18 X 1.75

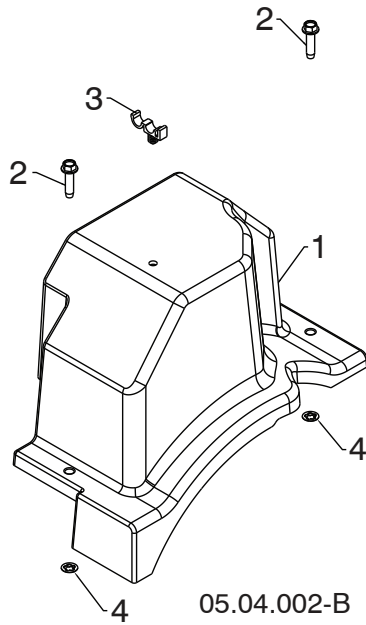
Ref.	Part No.	Description
15	586 88 02-02	PULLEY IDLER 2.0 WITH SPACER
16	586 88 02-02	PULLEY IDLER 2.0 O/ SPACER
17	587 89 37-03	PULLEY ASM IMPELLER /DRIVE
18	595 51 79-01	SCREW FLANGE HEAD 3/8-16
19	594 94 44-01	NUT NYLOK FLANGE 5/16-18
20	585 51 78-01	SCREW 1/4-20 X .65 W/DOG POINT
21	590 04 46-02	BRACKET NUT BZP
22	590 69 92-01	PULLEY IMPELLER DD 4L
23	587 58 72-02	GUIDE LOWER AUGER BELT .479
24	596 03 16-01	BOLT HXHD 5/16-18 X 5/8
25	581 59 25-02	BRACKET AUG HOUSING INTER .479
26	581 63 20-02	BRACKET BELT KEEPER LOWER .479
27	581 33 82-03	ARM IDLER DRIVE

**NOTE:** All component dimensions given in U.S. inches. 1 inch = 25.4 mm  
**IMPORTANT:** Use only Original Equipment Manufacturer (O.E.M.) replacement parts. Failure to do so could be hazardous, damage your snow thrower and void your warranty.

# REPAIR PARTS

# CHASSIS / ENGINE / PULLEYS

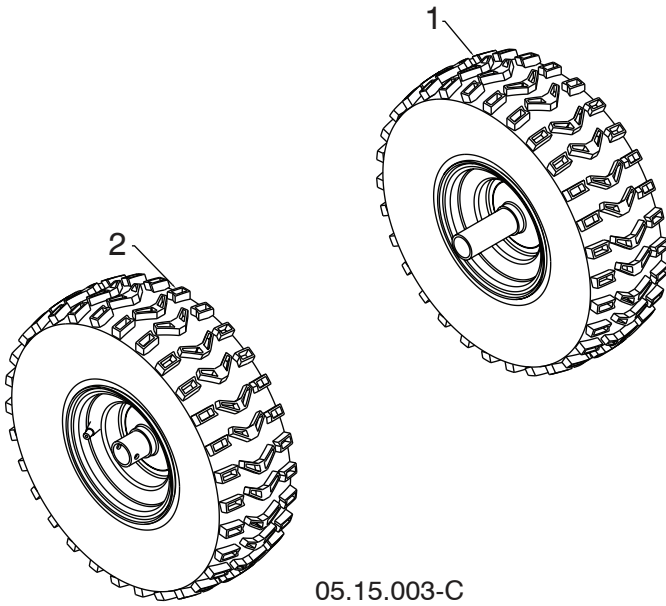
SNOW THROWER - MODEL NO. **ST 224** (97046860100), PRODUCT NO. 970 46 86-01



Ref.	Part No.	Description
1	587 10 54-01	BELT COVER BLACK ASSEMBLY (INCLUDES 2 & 4)
2	-----	BOLT HEX WSH THDRL 1/4-20 X 1
3	532 14 50-06	CABLE GUIDE
4	-----	PALNUT 1/4 IN

**NOTE:** All component dimensions given in U.S. inches. 1 inch = 25.4 mm  
**IMPORTANT:** Use only Original Equipment Manufacturer (O.E.M.) replacement parts. Failure to do so could be hazardous, damage your snow thrower and void your warranty.





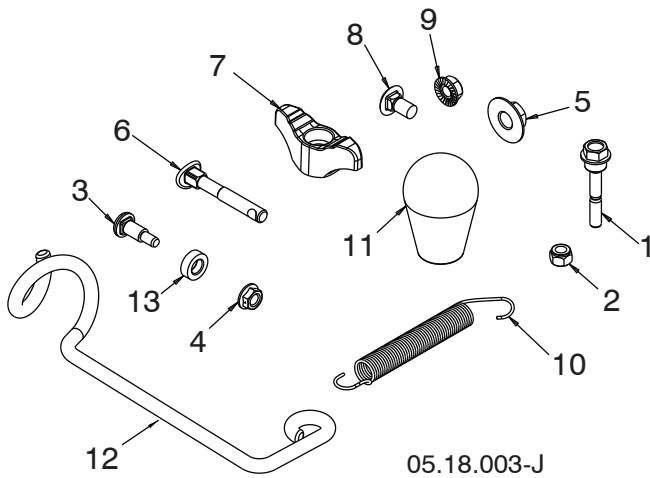
Ref.	Part No.	Description
1	586 71 04-01	WHEEL 15X5.00 NPS LH 1.00
2	586 71 03-01	WHEEL 15X5.00 NPS RH 1.00

**NOTE:** All component dimensions given in U.S. inches. 1 inch = 25.4 mm  
**IMPORTANT:** Use only Original Equipment Manufacturer (O.E.M.) replacement parts.  
 Failure to do so could be hazardous, damage your snow thrower and void your warranty.

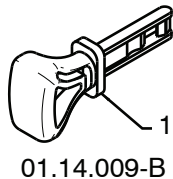
## REPAIR PARTS

## BAG OF PARTS

SNOW THROWER - MODEL NO. **ST 224** (97046860100), PRODUCT NO. 970 46 86-01



Ref.	Part No.	Description
1	588077502	BOLT 1/4-20 X 1.81
2	595086601	NUT NYLOCK 1/4-20
3	501417301	BOLT SHOULDER
4	585 69 14-01	NUT HEX FL 1/4-20 CTR
5	585 69 10-01	NUT NYLOCK 3/8-16
6	588 05 99-01	BOLT 5/16-18 X 2.25 CONCAVE
7	532 18 97-13	KNOB 5/16-18 TWO-WING
8	585 83 20-01	BOLT 5/16-18 X .625
9	873 97 05-00	NUT SERR FL LOCK 5/16-18
10	532 18 45-05	SPRING DEFLECT CHUTE
11	581 69 75-01	KNOB SOFT TOUCH SLOTTED
12	596 97 68-01	SUPPORT ROTATION CABLE
13	501 41 74-01	WASHER NYLON



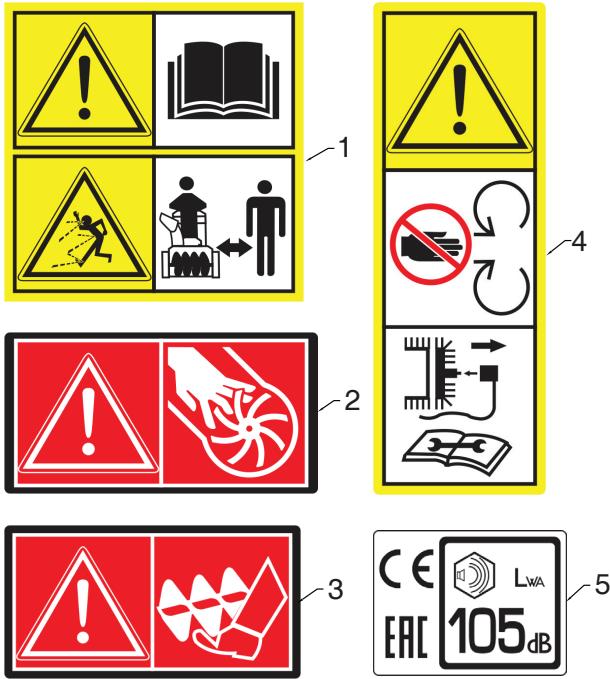
Ref.	Part No.	Description
1	532 44 30-59	SAFETY IGNITION KEY KIT

**NOTE:** All component dimensions given in U.S. inches. 1 inch = 25.4 mm  
**IMPORTANT:** Use only Original Equipment Manufacturer (O.E.M.) replacement parts.  
 Failure to do so could be hazardous, damage your snow thrower and void your warranty.

# REPAIR PARTS

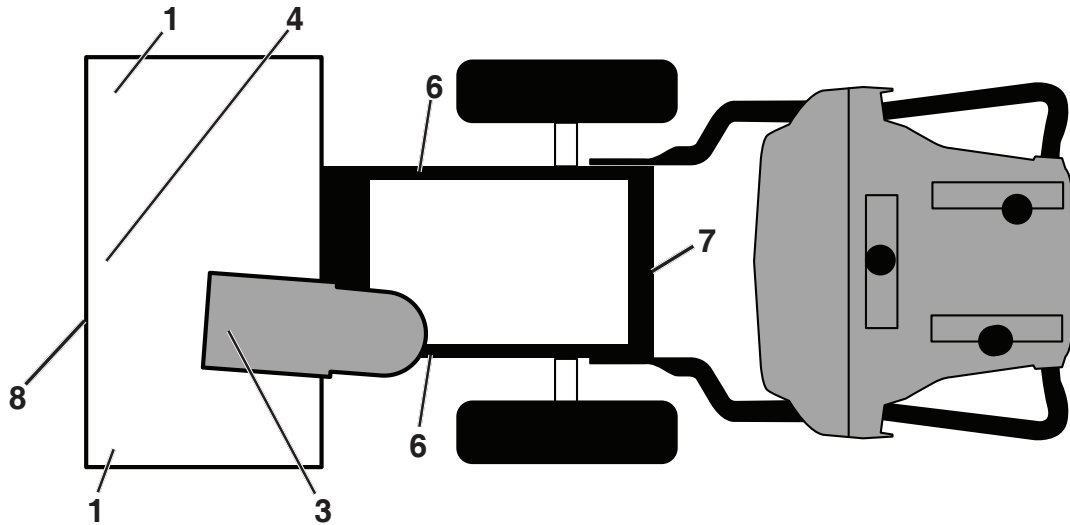
# DECALS

## SNOW THROWER - MODEL NO. ST 224 (97046860100), PRODUCT NO. 970 46 86-01



Ref.	Part No.	Description
1	532 18 40-45	DECAL AUGER
2	590 81 22-01	DECAL CHUTE
3	532 19 96-83	DECAL AUGER SAFETY
4	532 18 40-28	DECAL BELT GUIDE
5	589 59 27-01	DECAL NOISE LEVEL

05.16.002-B



Ref.	Part No.	Description
1	532 19 96-83	DECAL, DANGER
3	590 81 22-01	DECAL, DANGER, DEFLECTOR
4	532 18 40-45	DECAL, DANGER
6	532 18 40-28	DECAL
7	589 59 27-01	DECAL, NOISE LEVEL
8	588 59 71-01	DECAL, AUGER HOUSING
--	590 69 72-01	DECAL, ENG. RECOIL (NOT SHOWN)

Ref.	Part No.	Description
--	114 22 57-20	OPERATOR'S MANUAL, EURO
--	114 22 58-10	OPERATOR'S MANUAL, SCAN
--	114 22 59-50	OPERATOR'S MANUAL, EBLOC
--	114 22 60-40	OPERATOR'S MANUAL, BALTIC
--	114 22 61-53	OPERATOR'S MANUAL, UKRAN
--	114 22 62-76	OPERATOR'S MANUAL, TURK

**NOTE:** All component dimensions given in U.S. inches. 1 inch = 25.4 mm  
**IMPORTANT:** Use only Original Equipment Manufacturer (O.E.M.) replacement parts. Failure to do so could be hazardous, damage your snow thrower and void your warranty.

GEN I 208cc Snow Engines

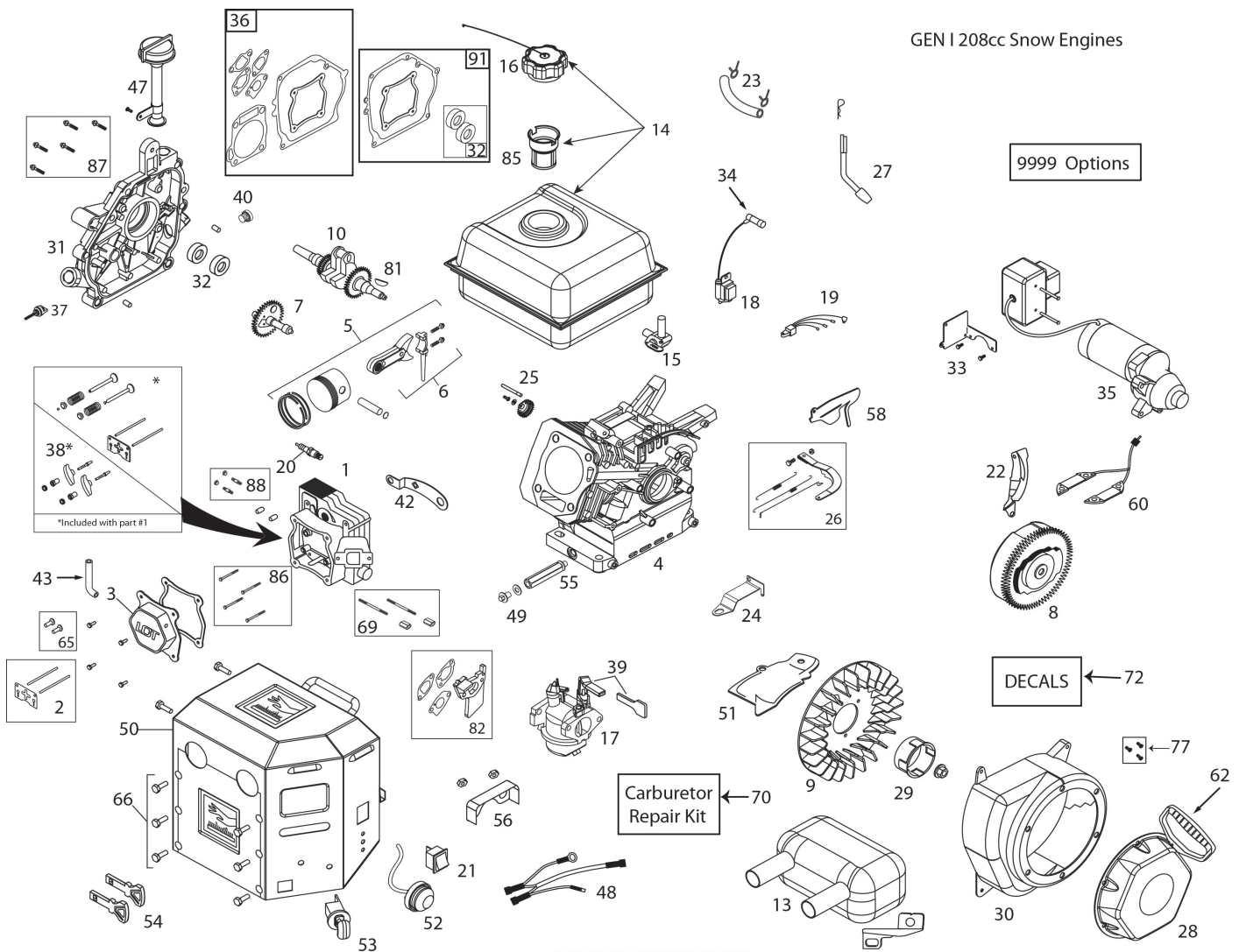


ILLUSTRATION FOR REFERENCE ONLY

Ref.	Part No.	Description
1	532 42 05-78	Cylinder Head Assembly (incl. Gasket)
2	532 42 05-79	Push Rod & Plate Kit (incl. valve cover gskt)
3	532 42 05-80	Valve Cover (incl. Gasket)
5	532 42 05-82	Piston & Rod Assembly
7	532 42 05-84	Camshaft
8	595 01 24-01	Flywheel - Electric Start w/ 6 magnets
9	532 42 05-86	Cooling Fan - Flywheel
10	532 44 66-42	Crankshaft
13	599 71 66-01	Muffler Assembly
14	532 43 65-64	Fuel Tank (2.7L Black w/Plastic Cap )

Ref.	Part No.	Description
15	532 42 92-34	Fuel Tank On/Off Valve
16	532 42 49-42	Fuel Tank Cap - Black Click Style (Vented)
17	597 92 99-01	Carburetor (w/Idle speed control - w/ gskts)
18	532 44 39-34	Ignition Coil
20	532 42 49-39	Spark Plug
22	585 77 24-01	Shield - Flywheel
23	532 43 21-44	Fuel Hose Kit
24	532 42 92-59	Speed Control Bracket (Fixed)
25	532 42 96-46	Governor Gear Assembly
26	581 76 87-01	Governor Arm & Link Kit

**NOTE:** All component dimensions given in U.S. inches. 1 inch = 25.4 mm  
**IMPORTANT:** Use only Original Equipment Manufacturer (O.E.M.) replacement parts. Failure to do so could be hazardous, damage your snow thrower and void your warranty.

## ENGINE, LCT

Ref.	Part No.	Description
27	532 42 06-02	Governor Arm Paddle
28	532 43 69-67	Recoil Starter Assy
29	532 43 69-68	Starter Cup
30	599 71 67-01	Blower Housing
31	581 00 73-01	Crankcase Cover Assy (incl. gasket)
32	532 42 95-99	Oil Seal Kit (2 Pcs)
34	532 43 69-66	Spark Plug Boot
35	595 91 55-01	230V Electric Starter
36	532 42 96-01	Engine Gasket Kit
37	532 42 09-61	Small Black Oil Dipstick (Plastic)
38	532 42 96-91	Rocker Arm Kit (incl. gasket)
39	532 42 92-24	Choke Control Knob
40	532 42 95-98	Non-Removable Plastic Plug
43	580 35 34-01	Breather Tube
47	581 00 72-01	High Oil-Fill Tube/Dipstick (Press-In Type)
48	595 01 25-01	Wire Harness
49	532 43 54-95	Oil Drain Plug w/washer
50	595 01 26-01	Heater Box
51	532 43 71-19	Shield - Cylinder
52	532 42 49-49	Primer Bulb With Hose
53	532 42 49-54	Safety Key Switch (incl. keys)
54	532 44 30-59	Key Set - Red (2)
55	532 43 26-86	Oil Drain Tube-Snow
56	see ref 58	Part of ref 58, all one piece

## COMPLETE ENGINE-590218605

Ref.	Part No.	Description
58	595 01 27-01	Gov and Carb Shield - Composite (also repls 56,79,80)
59	532 43 65-62	Fuel Tank Skirt
60	532 44 38-93	60 watt AC Charging Coil
61	532 43 27-52	Fuel Control Knob
65	581 37 28-01	Tappet Kit (Set of 2)
69	532 42 49-51	Carburetor Studs & Coupling Kit
70	580 35 36-02	Carburetor Repair Kit
72	587 15 22-01	LABEL KIT
74	587 82 11-01	Muffler Heat Shield Cover
77	532 43 26-88	Recoil Bolt Kit (3 bolts per kit)
78	581 45 93-01	Breather Tube Bracket
79	see ref 58	Part of ref 58, all one part
80	see ref 58	Part of ref 58, all one part
81	585 29 72-01	Woodruff Flywheel Keys
82	585 02 05-03	CARBURETOR SPACER KIT
85	586 32 56-01	Fuel Tank Strainer
86	586 32 73-02	Cylinder Head Bolt Kit (4)
87	586 32 69-01	CC Cover Bolt Kit (6)
88	586 32 68-01	Muffler Mtg Stud Kit (2)
89	587 12 48-01	Speed Control Knob
91	587 52 57-01	Crankcase Gasket Kit
97	589 75 26-01	Muffler Manifold Shield
9999	586 32 62-01	High Altitude Jet (>6,000 feet)
9999	579 80 64-01	Bolt Kit - Blower Hsg-Heater Box-Tank Skirt
9999	590 92 08-01	Starter Switch Box Screws

**NOTE:** All component dimensions given in U.S. inches. 1 inch = 25.4 mm  
**IMPORTANT:** Use only Original Equipment Manufacturer (O.E.M.) replacement parts.  
 Failure to do so could be hazardous, damage your snow thrower and void your warranty.