

Repair Parts Manual
Manual De Repuestos
YTH24V54 / 96045006401



English



Please read the operator's manual carefully and make sure you understand the instructions before using the machine.

529 67 76-01

HOW TO USE THIS MANUAL

This manual is designed to provide the customer with a means to identify the parts on his/her tractor when ordering repair parts. The illustrations may or may not represent the actual assemblies; therefore, it is not recommended to use this manual as a guide to assemble or disassemble the tractor. Some hardware and parts are drawn larger in order to more readily identify them.

Each tractor has its own model number. The model number for your tractor can be found on the fender under the seat.

Support / Help

If you require assistance or have questions concerning the application, operation, maintenance or parts for your product:

- Visit our website: www.husqvarna.com
- Call Us Toll Free: 1-800-487-5951

When ordering parts, always give the following information:

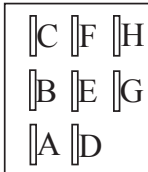
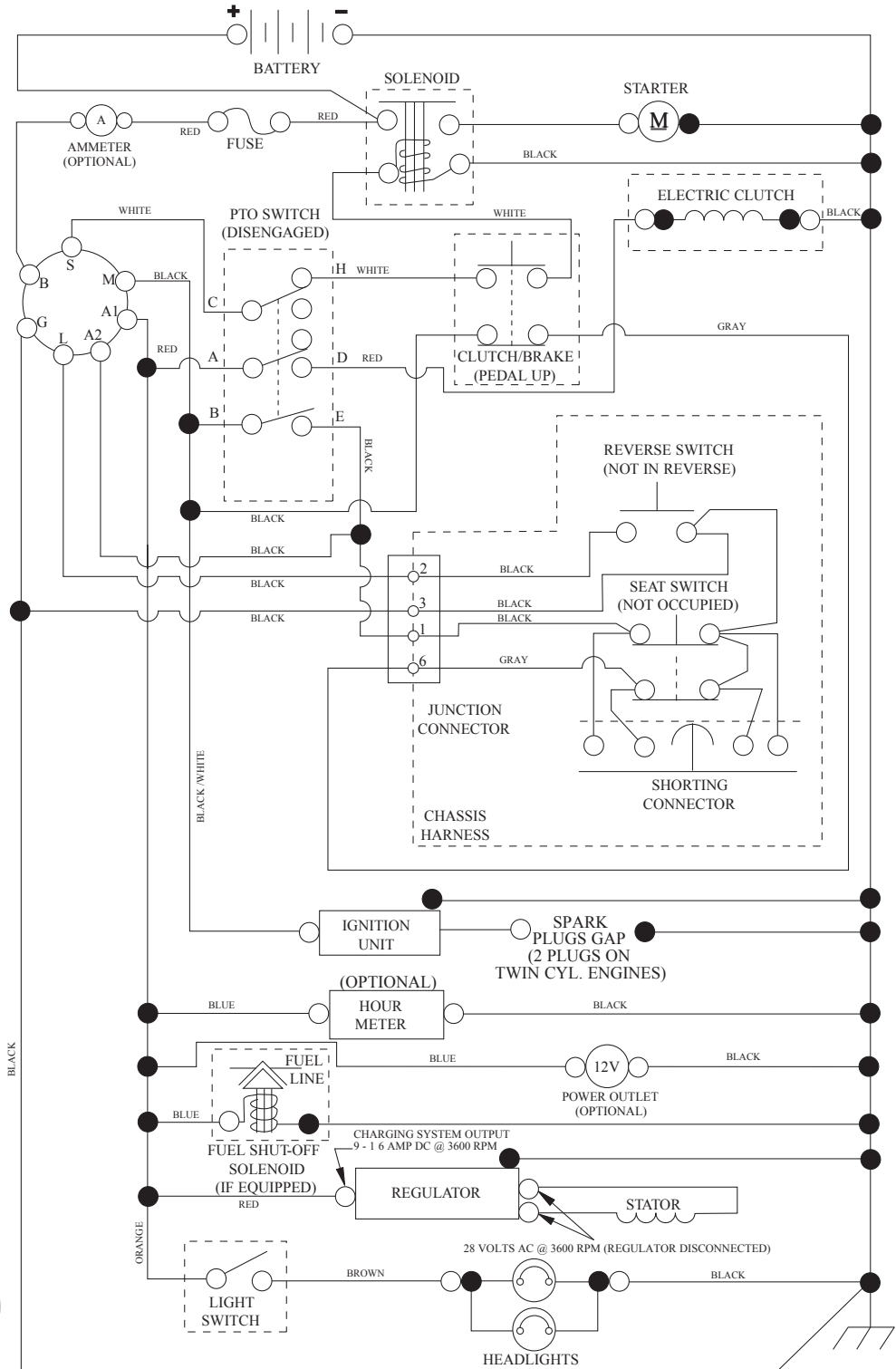
- Product - "TRACTOR"
- MODEL NUMBER - "YTH24V54" (96045006401)"
- Part Number
- Part Description

TABLE OF CONTENTS

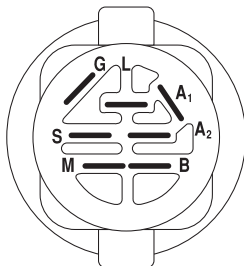
SCHEMATIC	3
ELECTRICAL	4-5
CHASSIS	6-7
DRIVE	8-9
ENGINE	10-11
STEERING	12-13
MOWER DECK	14-15
MOWER LIFT	16
SEAT	17
DECALS	18

TRACTOR - MODEL NO. YTH24V54 (96045006401), PRODUCT NO. 960 45 00-64 SCHEMATIC

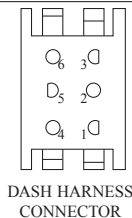
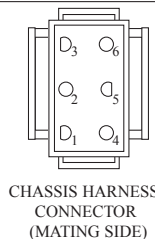
SCH12



PTO SWITCH (MATING SIDE)



POSITION	CIRCUIT	"MAKE"
OFF	M+G+A1	
RUN/OVERRIDE	B+A1	
RUN	B+A1	L+A2
START	B + S + A1	

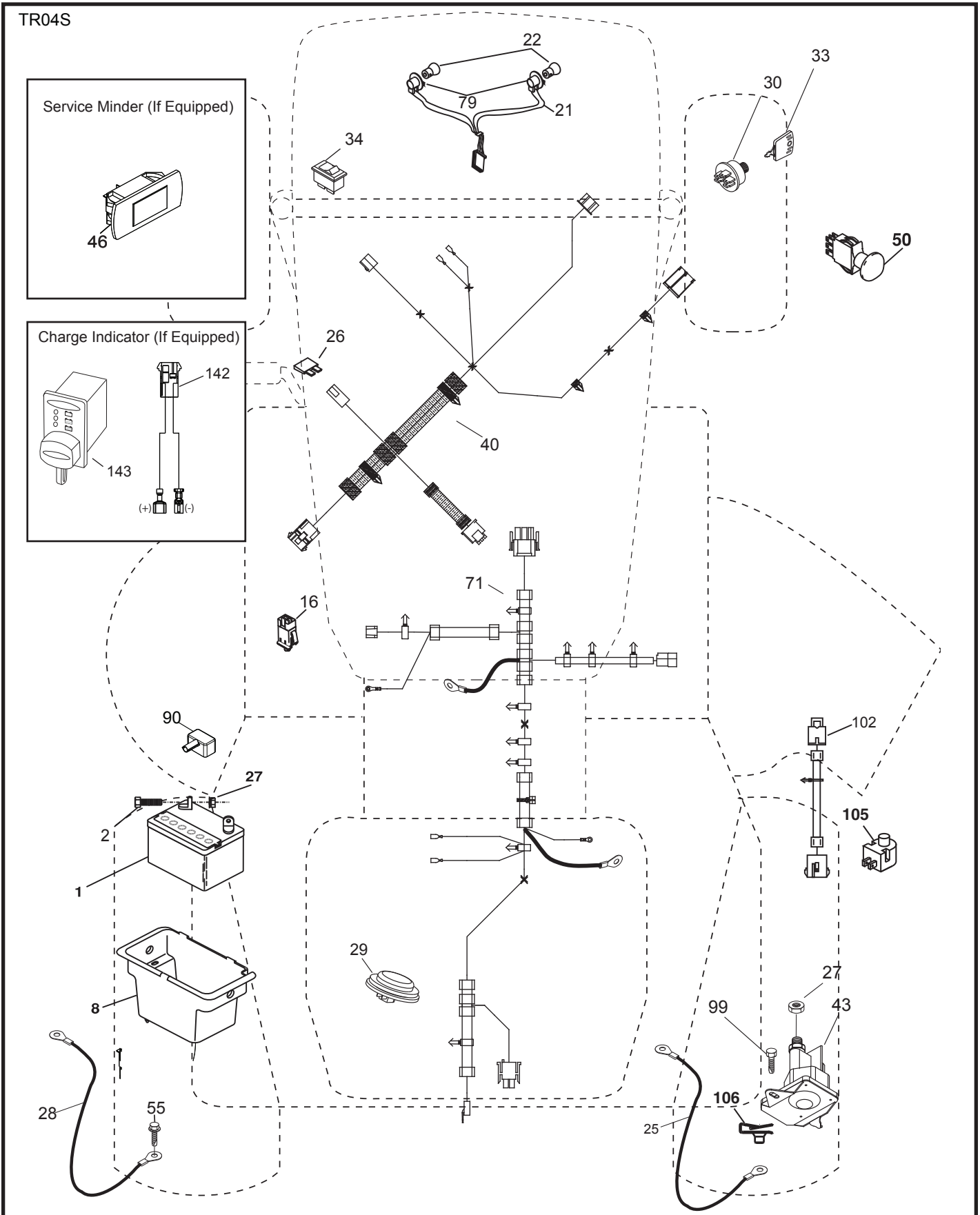


WIRING INSULATED CLIPS
NOTE: IF WIRING INSULATED CLIPS WERE REMOVED FOR SERVICING OF UNIT, THEY SHOULD BE RE-INSTALLED TO PROPERLY SECURE YOUR WIRING.

●
NON-REMOVABLE CONNECTIONS

○
REMOVABLE CONNECTIONS

**TRACTOR - MODEL NO. YTH24V54 (96045006401), PRODUCT NO. 960 45 00-64
ELECTRICAL**

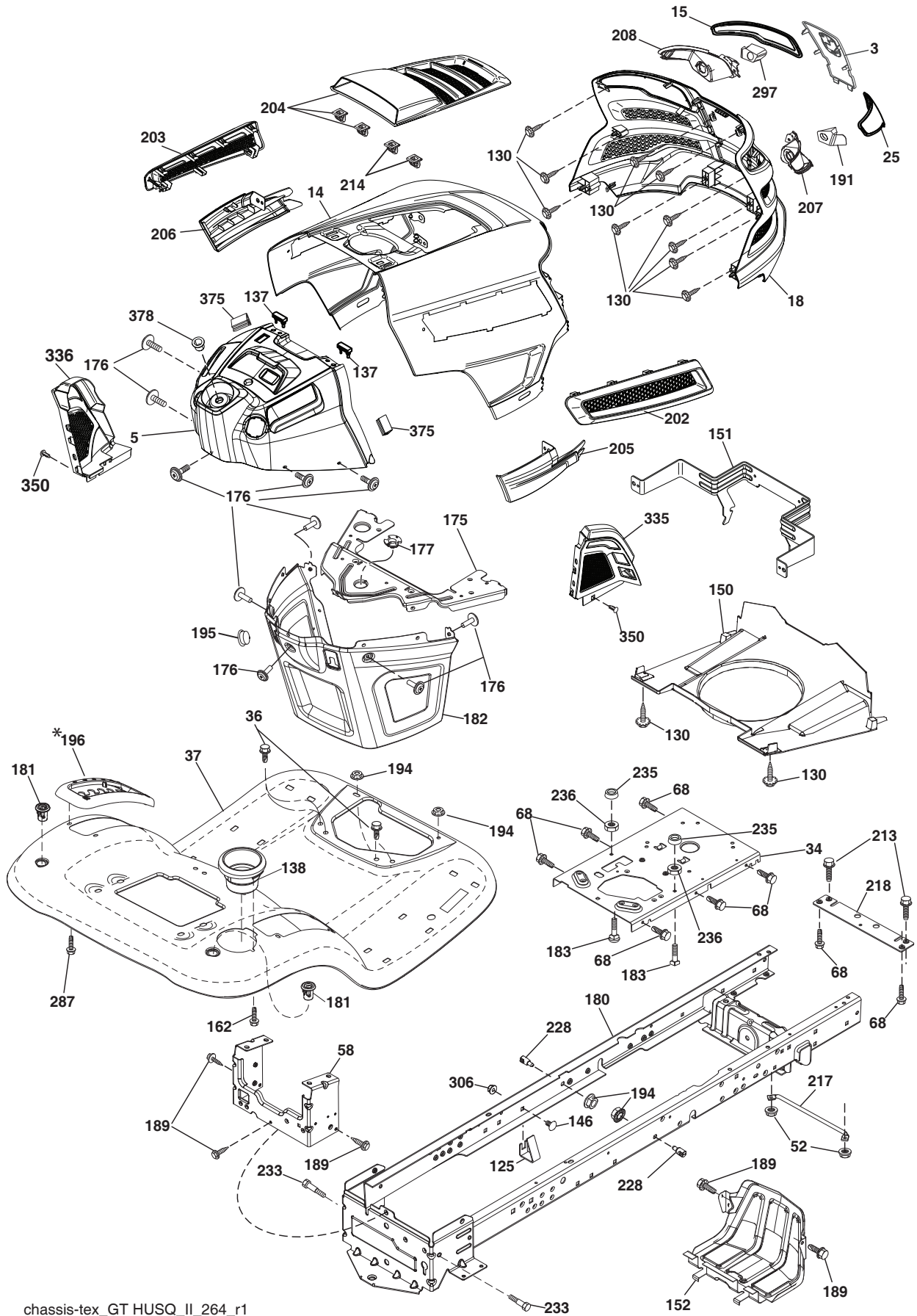


**TRACTOR - MODEL NO. YTH24V54 (96045006401), PRODUCT NO. 960 45 00-64
ELECTRICAL**

KEY NO.	PART NO.	DESCRIPTION
1	532 16 34-65	Battery
2	874 76 04-12	Bolt Hex Hd 1/4-20 unc x 3/4
8	532 19 32-28	Battery Box
16	532 17 61-38	Switch Interlock
21	532 40 02-52	Harness Socket Light
22	532 00 41-52	Bulb, Light #1156
25	581 49 80-01	Cable Batt. Red
26	532 17 51-58	Fuse
27	596 13 36-01	Locknut, Keps. 1/4-20
28	532 42 16-86	Cable Ground
29	532 40 15-45	Switch Seat
30	532 19 33-50	Switch Ign
33	532 41 19-35	Key/Chain
34	532 11 07-12	Switch Light/Reset
40	581 02 32-01	Harness Ign. Dash
43	582 04 28-02	Solenoid
46	594 91 91-01	Hourmeter, Serviceminder
50	582 10 76-02	Switch PTO
55	817 06 05-12	Screw Thdrol 5/16-18 x 3/4
71	501 13 37-01	Harness Chassis
79	532 17 52-42	Socket Asm. Bulb Twistlock
90	532 43 53-95	Cover Terminal Battery
99	817 67 04-12	Screw 1/4-20 x 3/4
102	532 40 44-54	Harness Pigtail
105	532 40 75-68	Switch Reverse TT Pedal Control
106	532 17 48-14	Palnut 1/4 Lugs

NOTE: All component dimensions given in U.S. inches
1 inch = 25.4 mm

TRACTOR - MODEL NO. YTH24V54 (96045006401), PRODUCT NO. 960 45 00-64 CHASSIS

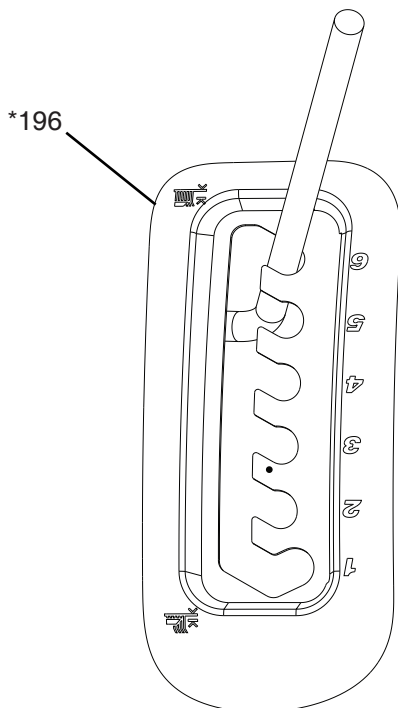


chassis-tex_GT HUSQ_II_264_r1

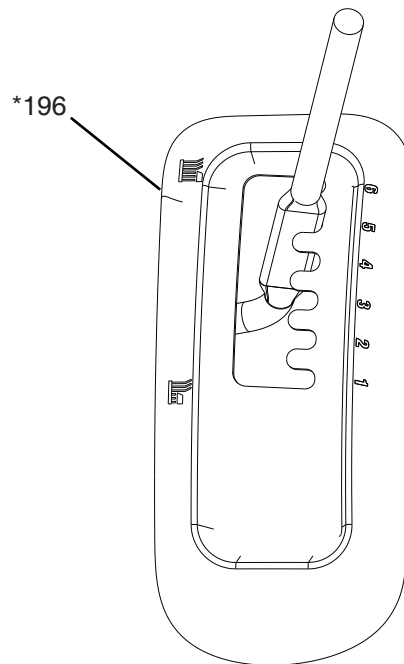
TRACTOR - MODEL NO. YTH24V54 (96045006401), PRODUCT NO. 960 45 00-64 CHASSIS

KEY NO.	PART NO.	DESCRIPTION	KEY NO.	PART NO.	DESCRIPTION
3	532 44 44-81	Logo	195	532 40 41-37	Plug Hole Dash Lower
5	590 74 88-21	Dash, Upper	*196	532 43 96-47	Tex Deck Lift Console
14	532 44 11-77	Hood	*196	596 86 92-01	Tex Deck Lift Console
15	532 43 97-33	Lens LH	202	532 43 97-28	Vent Side Hood RH
18	597 24 72-01	Grille, Asm. Gt. II, Incandescent	203	532 43 97-27	Vent Side Hood LH
25	532 44 33-85	Lens RH	204	587 48 58-01	Vent, Top, Asm. (includes clips)
34	580 91 08-01	Plate Engine	205	532 43 97-30	Trim Hood Side RH
36	817 06 05-12	Screw 5/16-18 x 3/4	206	532 43 97-29	Trim Hood Side LH
37	532 44 12-06	Fender	207	587 46 48-01	Bezel RH
52	596 04 05-01	Nutlock, Hex. Prvl. 5/16-18	208	587 46 45-01	Bezel LH
58	532 41 22-80	Drawbar Upper	213	596 03 05-01	Bolt, Hex. Hd. 5/16-18 unc x 3/4
68	596 03 07-01	Screw, Hexagon, 5/16-18 x 1/2	214	532 19 91-45	Clip Retainer Tinner
125	581 68 48-01	Clip Fuel Line	217	532 40 91-67	Rod Pivot
130	596 32 17-01	Screw, #10 x 0.750 BOS Thread	218	532 19 63-95	X-Piece Hood Stop
137	532 40 75-90	Bumper Dash	228	593 82 40-01	Stud, W/"D" Anti-rotation
138	532 43 97-47	Cup Holder	233	532 19 65-39	Bolt, Shoulder
146	581 85 79-01	Bolt 3/8-16 x 5/8	235	596 56 42-01	Spacer, Fender, Clr. Zn
150	532 43 97-74	Air Duct	236	873 93 05-00	Nut Lock 5/16-18 unc
151	532 43 66-70	Bracket Pivot	287	817 60 04-06	Screw Hex Washhead 1/4-20 x 3/8
152	532 43 98-70	Shield Browning	297	532 43 74-56	Insert Reflective LH
162	596 13 41-01	Screw, Hex. Tap. 1/4-15 x 1/2	306	873 90 06-00	Nut Lock 3/8-16 unc
175	590 60 77-02	Plate, Crossmember Husq/Pre	335	532 44 82-04	Cover Lower Dash Close Out RH
176	532 40 07-76	Screw 10-24 x 5/8	336	532 44 53-09	Cover Lower Dash LH
177	532 19 52-28	Bushing Steering	350	532 44 51-43	Clip X-mas Tree
180	532 41 50-63	Chassis	375	586 90 82-01	Dash Clip-On Bumper
181	532 43 97-46	Bushing	378	590 84 98-01	Bushing, Flange, Plastic
182	532 40 68-59	Dash Lower			
183	595 30 57-01	Screw, Hexagon, 5/16-18 x 1-1/4			
189	817 00 05-12	Screw 3/8-16 3/4			
191	532 43 74-55	Insert Reflective RH			
194	596 13 57-01	Nutlock, Prvl, Torq. 5/16-18 x .68			

NOTE: All component dimensions given in U.S. inches
1 inch = 25.4 mm

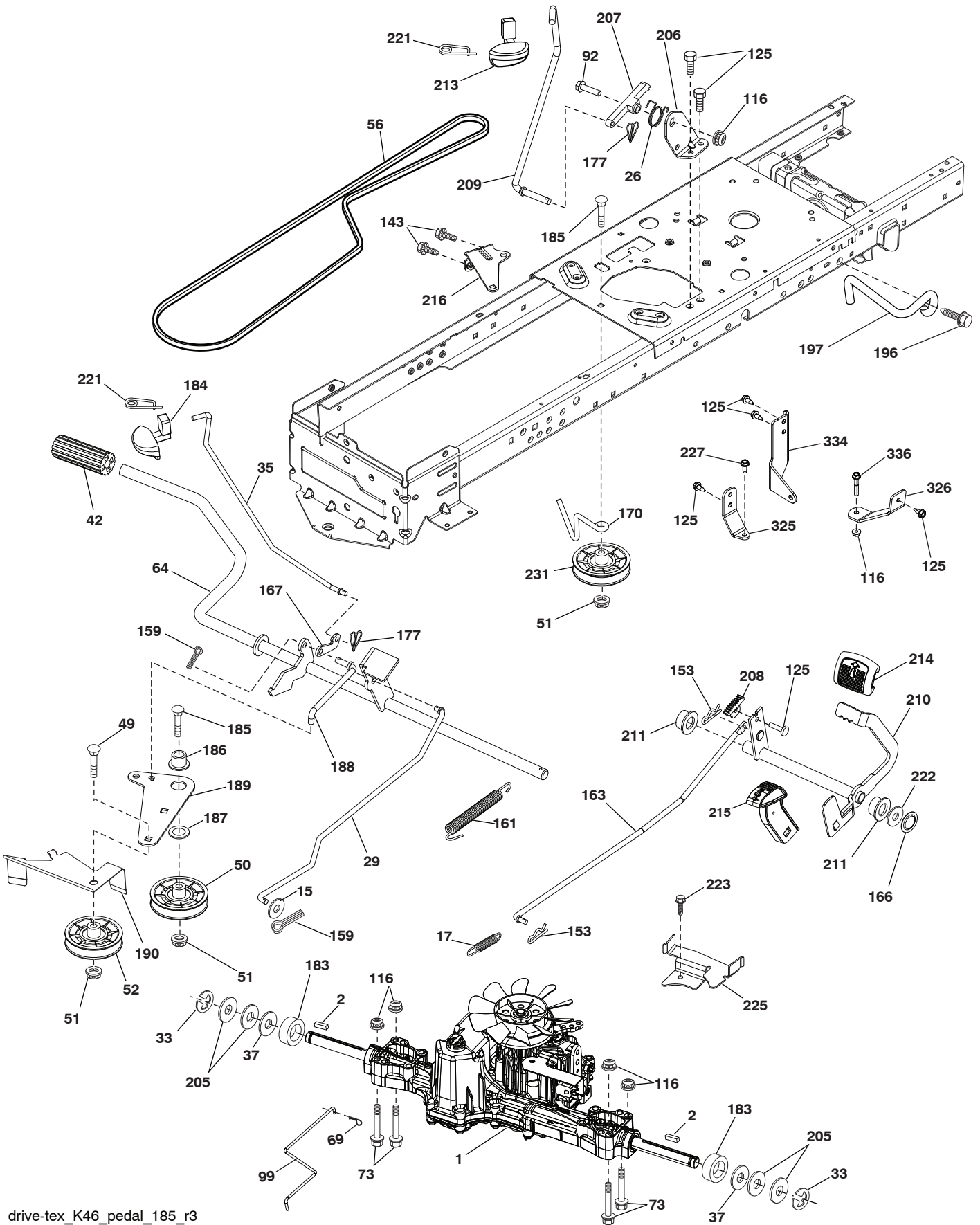


*196 532 43 96-47 Tex Deck Lift Console



*196 596 86 92-01 Tex Deck Lift Console

TRACTOR - MODEL NO. YTH24V54 (96045006401), PRODUCT NO. 960 45 00-64 DRIVE



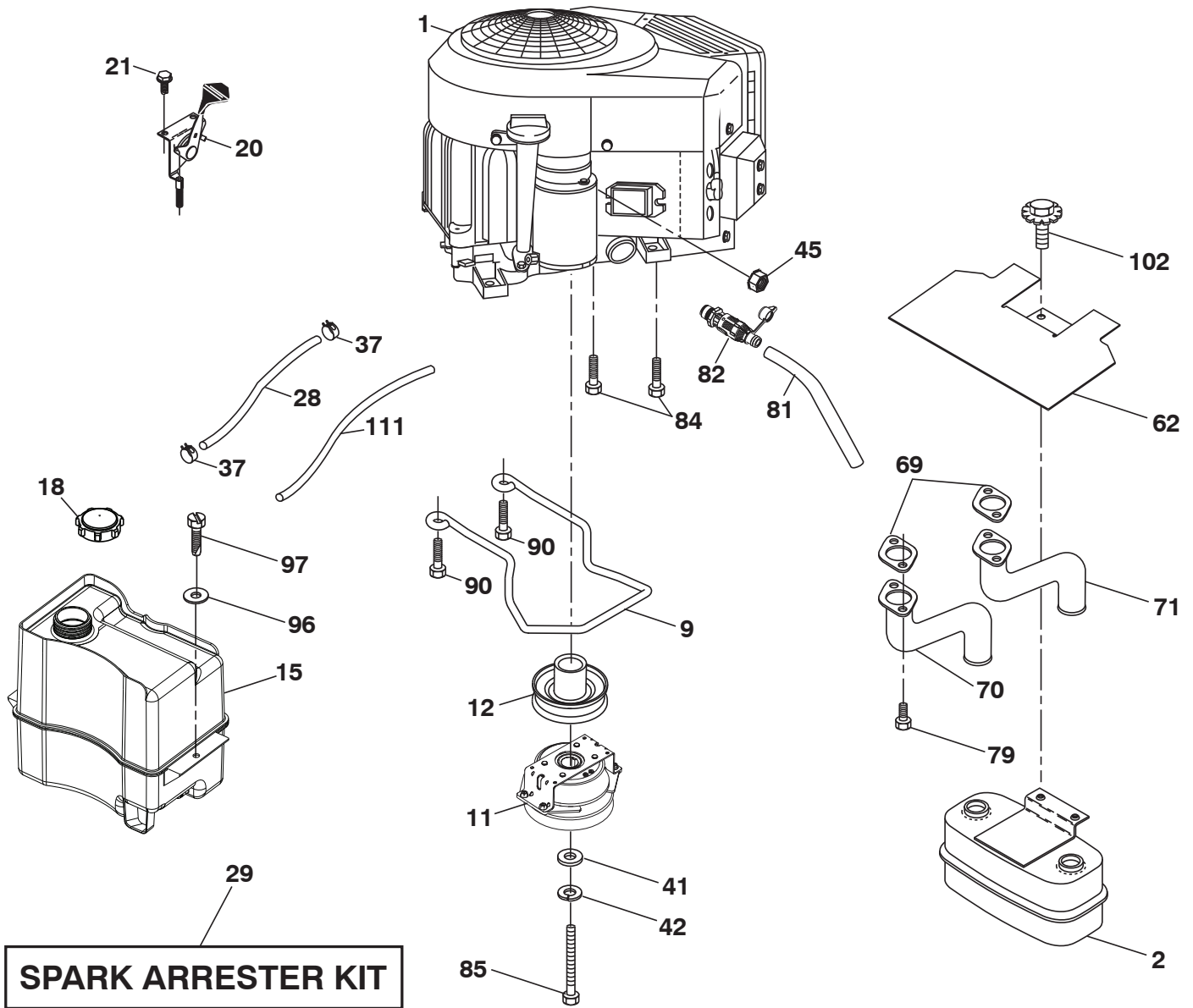
drive-tex_K46_pedal_185_r3

TRACTOR - MODEL NO. YTH24V54 (96045006401), PRODUCT NO. 960 45 00-64 DRIVE

KEY NO.	PART NO.	DESCRIPTION	KEY NO.	PART NO.	DESCRIPTION
1	---	Transaxle, Tufftorq K46BT(426120) (Order parts from transaxle manu facturer.)	184	587 65 37-01	Handle Parking Brake
2	532 12 35-83	Key Square	185	872 11 06-22	Bolt, Rdhd. 3/8-16 unc x 2-3/4 Gr.5
15	596 56 53-01	Washer 3/8 x 0.08 in. St. Clr. Zinc	186	532 19 43-21	Spacer Retainer
17	532 41 36-78	Spring, Brake	187	596 13 55-01	Washer, 13/32 x 2 Clear, Zinc
26	532 19 96-79	Spring Return Cruise	188	582 21 70-01	Link Clutch Ground Drive
29	532 40 38-06	Rod, Brake	189	532 19 43-17	Bellcrank Ground Drive
33	812 00 00-01	Ring E	190	532 19 43-18	Keeper Bellcrank Ground Drive
35	590 60 59-02	Rod, Control, Park LT.	196	817 00 06-16	Screw 3/8-16 x 1
37	532 18 89-67	Washer Harden .793 x 1.637 x 060	197	585 65 86-02	Link Clutch Anti-Rotation
42	532 00 88-83	Cover, Pedal, Blk. Round	205	532 12 17-48	Washer 25/32 x 1-5/8 x 16 Ga.
49	596 13 62-01	Bolt, Cup Head, 3/8-16 x 3/4	206	532 44 85-96	Bracket Mount Latch Cruise
50	532 19 43-27	Pulley Idler Flat	207	587 03 14-02	Latch Control Cruise
51	873 90 06-00	Lock Nut 3/8-16	208	596 56 41-01	Gear
52	532 19 43-26	Idler V-Groove 910" Offset	209	590 52 78-02	Rod, Control, Cruise, Gt. Husq.Tex
56	592 85 52-01	Belt, Drive, Tex. K46	210	532 40 09-80	Rocker Asm. Pedal Control
64	532 19 78-65	Shaft Asm. Pedal Brake Control	211	532 12 01-83	Bearing Nylon
69	532 42 33-03	Hairpin Soft Zinc .059 x 1.125	213	532 40 31-19	Knob Control Cruise
73	596 13 65-01	Bolt, Hex. Head, 5/16-18 x 1-1/2	214	532 42 12-63	Pedal Forward Pad
92	595 30 57-01	Screw, Hexagon, 5/16-18 x 1-1/4	215	586 60 65-02	Pedal Reverse
99	582 40 45-01	Rod Bypass LT K46, K57	216	532 19 61-31	Bracket Pulley Idler
116	596 13 57-01	Nutlock, Prvl. Torq. 5/16-18 x .68	221	532 40 31-87	Retainer Spring Clip Handle
125	817 00 05-12	Screw 5/16-18 x 3/4	222	879 21 20-10	Washer 21/32 x 1-1/4 10 Ga.
143	596 03 07-01	Screw, Hexagon, 5/16-18 x 1/2	223	598 66 26-01	Bolt, T45, 5/16-18 x .75 Hexhd, Blk
153	532 00 44-97	Retainer, Spring, 1" Zinc/Cad.	225	532 40 33-19	Keeper Belt Transaxle
159	596 02 95-01	Pin, Cotter, 1/8 Dia. x 3/4	227	596 13 59-01	Bolt, Hex. 5/16-18 x 3/4 Clr. Znc.
161	532 10 57-09	Spring, Return, Clutch	231	532 40 72-87	Idler V-Groove
163	593 86 10-01	Rod, Control, K46/K57R	325	586 43 12-02	Torque Strap
166	532 42 91-64	Nut Push	326	586 00 11-02	Bracket Trq
167	532 40 52-57	Latch Brake Parking	334	585 88 22-02	Sway Rod Bracket
170	532 41 34-30	Keeper Center Span	336	587 25 96-02	Bolt, Hex. 5/16-18 x 1-3/4 Flanged
177	587 22 53-01	Pin, Cotter, Locking, Bowtie			
183	532 13 70-57	Spacer Axle			

NOTE: All component dimensions given in U.S. inches
1 inch = 25.4 mm

**TRACTOR - MODEL NO. YTH24V54 (96045006401), PRODUCT NO. 960 45 00-64
ENGINE**



SPARK ARRESTER KIT

engine-tex_bs-2cyl_179

TRACTOR - MODEL NO. YTH24V54 (96045006401), PRODUCT NO. 960 45 00-64 ENGINE

KEY NO.	PART NO.	DESCRIPTION
1	-----	Engine Briggs Model No. 44N877-0019-G1 (529582001) (Order parts from engine manufacturer.)
2	589 81 87-01	Muffler
9	596 50 15-02	Keeper, Belt, Engine 4.25"
11	587 24 16-01	Clutch Electric
12	532 40 50-97	Pulley Engine
15	597 95 45-01	Tank, Fuel, Asm. 2.5 Gal.
18	532 43 02-20	Cap Fuel
20	587 24 25-01	Control Throttle
21	596 32 17-01	Screw, #10 x 0.750 BOS Thread
28	532 40 11-37	Fuel Line
29	532 13 71-80	Spark Arrester Kit
37	532 12 34-87	Clamp Hose
41	532 12 61-97	Washer 1-1/2 OD x 15/32 ID x .250
42	596 23 89-01	Washer, 7/16 in. Clr. Zn
45	596 13 36-01	Locknut, Keps. 1/4-20
62	532 43 40-17	Shield Heat Muffler
69	532 16 53-91	Gasket
70	581 88 11-01	Tube Exhaust LH
71	581 88 10-01	Tube Exhaust RH
79	596 13 42-02	Screw, Hex. Socket, 5/16-18 x 1
81	532 14 84-56	Tube Drain Oil Easy
82	532 42 82-87	Valve Oil Drain
84	817 06 06-20	Screw 3/8-16 x 1-1/4
85	501 60 66-01	Bolt 7/16-20 x 3.75 Gr. 5
90	817 00 06-16	Screw 3/8-16 x 1
96	596 13 53-01	Washer, Plain, 9/32 x 7/8 Clr. Zn
97	817 67 04-12	Screw 1/4-20 x 3/4
111	596 94 15-01	Tube, Purge, Fuel
102	817 00 05-12	Screw 5/16-18 x 3/4

NOTE: All component dimensions given in U.S. inches
1 inch = 25.4 mm

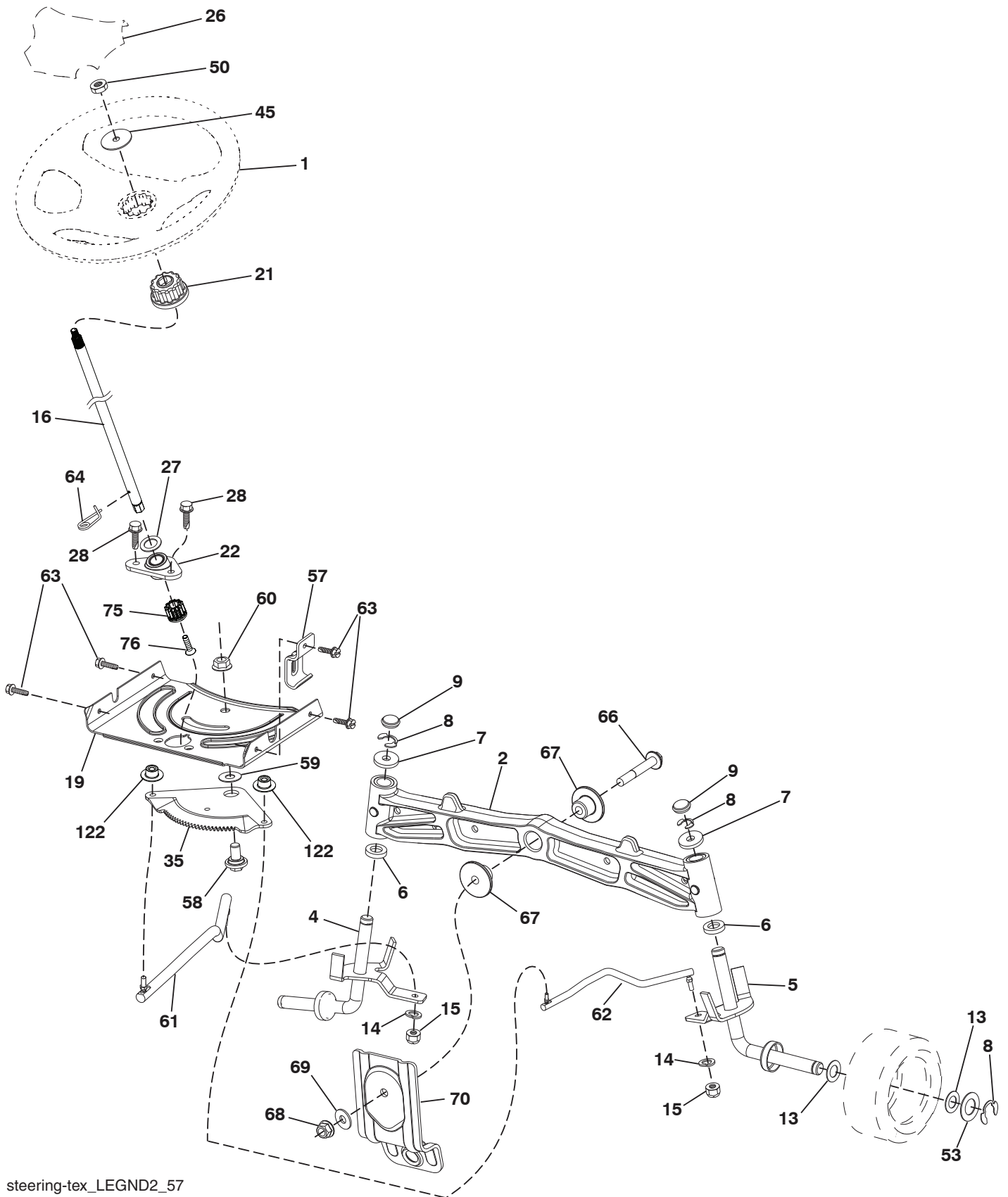
For engine service and replacement parts, call the toll free number for your engine manufacturer listed below:

Briggs & Stratton 1-800-233-3723

Engine Power Rating Information

The gross power rating for individual gas engine models is labeled in accordance with SAE (Society of Automotive Engineers) code J1940 (Small Engine Power & Torque Rating Procedure), and rating performance has been obtained and corrected in accordance with SAE J1995 (Revision 2002-05). Torque values are derived at 3060 RPM; horsepower values are derived at 3600 RPM. Actual gross engine power will be lower and is affected by, among other things, ambient operating conditions and engine-to-engine variability. Given both the wide array of products on which engines are placed and the variety of environmental issues applicable to operating the equipment, the gas engine will not develop the rated gross power when used in a given piece of power equipment (actual "on-site" or net power). This difference is due to a variety of factors including, but not limited to, accessories (air cleaner, exhaust, charging, cooling, carburetor, fuel pump, etc.), application limitations, ambient operating conditions (temperature, humidity, altitude), and engine-to-engine variability. Due to manufacturing and capacity limitations, Briggs & Stratton may substitute an engine of higher rated power for this Series engine.

TRACTOR - MODEL NO. YTH24V54 (96045006401), PRODUCT NO. 960 45 00-64
STEERING ASSEMBLY



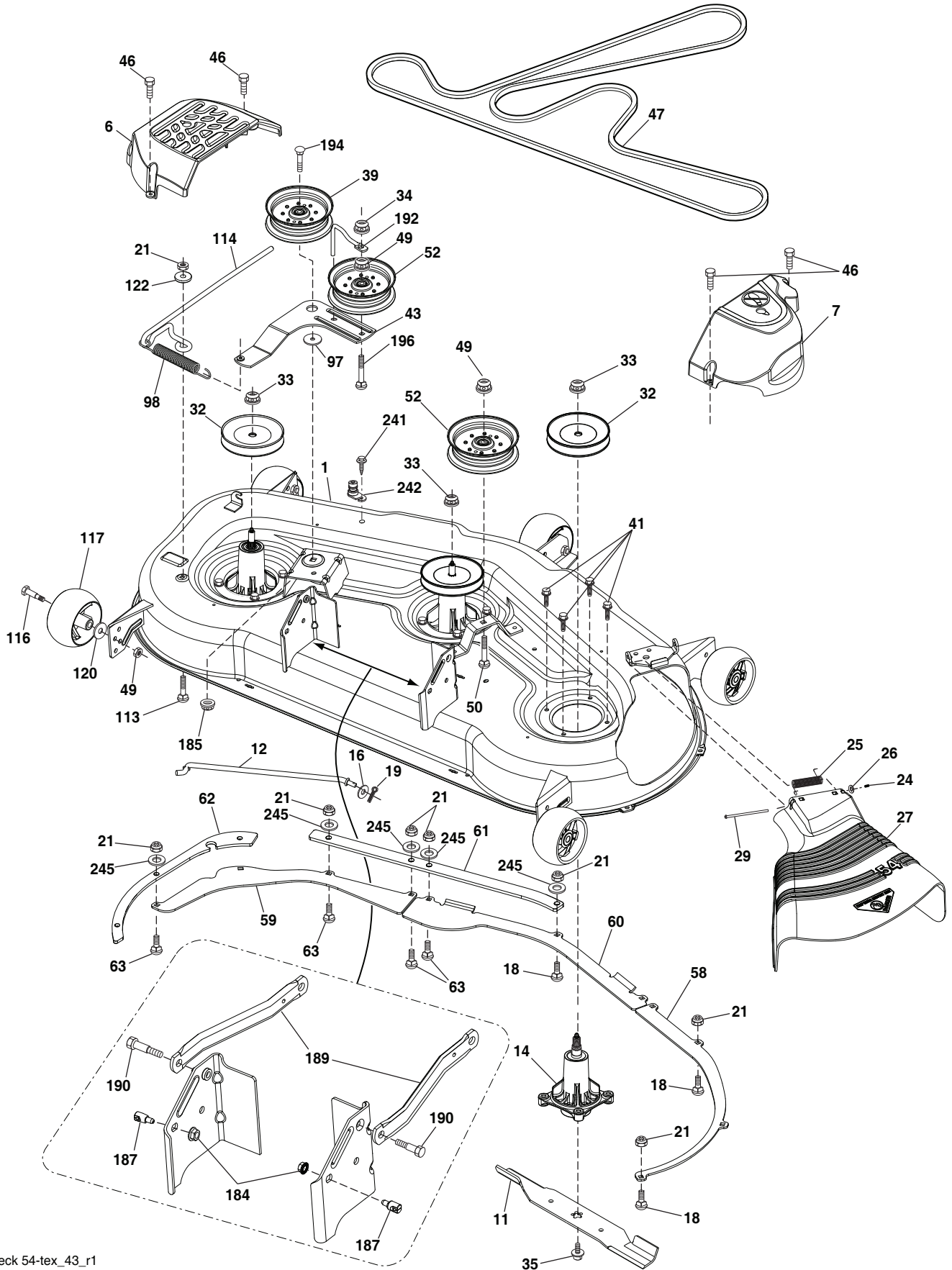
steering-tex_LEGND2_57

**TRACTOR - MODEL NO. YTH24V54 (96045006401), PRODUCT NO. 960 45 00-64
STEERING ASSEMBLY**

KEY NO.	PART NO.	DESCRIPTION
1	532 43 97-40	Wheel, Steering
2	532 19 59-68	Axle Asm., Front
4	532 40 30-87	Spindle Asm., LH
5	532 40 30-88	Spindle Asm., RH
6	532 00 62-66	Washer, Threst, .75 x 1.230
7	532 12 17-48	Washer 25/32 x 1-5/8 x 16 Ga.
8	812 00 00-29	Ring, Clip #T5304-75
9	532 12 12-32	Cap, Spindle
13	532 12 17-49	Washer 25/32 x 1-1/4 x 16 Ga.
14	596 23 87-01	Washer, Spring, Lock, .381 ID x .680
15	873 54 06-00	Nut, Crown Lock 3/8-24 unf
16	587 01 60-02	Steering Shaft
19	532 19 47-29	Plate Steering
21	586 84 02-01	Adapter Wheel Steering
22	585 02 98-02	Bearing
26	532 43 97-43	Insert, Wheel Steering
27	596 93 34-01	Washer, Plain
28	817 00 06-12	Screw 3/8-16 x 3/4
35	532 19 47-32	Gear, Sector Plate
45	587 01 64-01	Washer 3/8 ID 2-3/8 OD 12 Ga. PLTD
50	873 90 06-00	Nut Lock Flg 3/8-16 unc
53	532 18 89-67	Washer Hardened .793 x 1.637 x .060
57	532 19 72-46	Bracket Upstop
58	532 19 47-47	Bolt Shoulder Sector Pivot CFM
59	532 19 47-48	Washer Thrust Sector Steering
60	873 97 10-00	Nut Flange Lock 5/8-11
61	597 04 78-02	Draglink, LH
62	597 04 79-02	Draglink, RH
63	817 00 05-12	Screw 5/16-18 x 3/4
64	532 19 98-49	Retainer Clip Spring Steering
66	871 02 07-48	Bolt Hex Fghd 7/16-14 x 3 Serr
67	532 19 47-37	Bushing PM Front Axle
68	873 90 07-00	Nut Lock Flange 7/16-14 Gr. 5
69	532 19 91-62	Washer 1.5 x .505 x .118
70	585 33 88-01	Bracket Deck Susp. Front
75	580 68 37-01	Pinion
76	580 68 36-01	Screw Head Sock
122	532 44 49-62	Cap Gear Sector

NOTE: All component dimensions given in U.S. inches
1 inch = 25.4 mm

TRACTOR - MODEL NO. YTH24V54 (96045006401), PRODUCT NO. 960 45 00-64
MOWER DECK



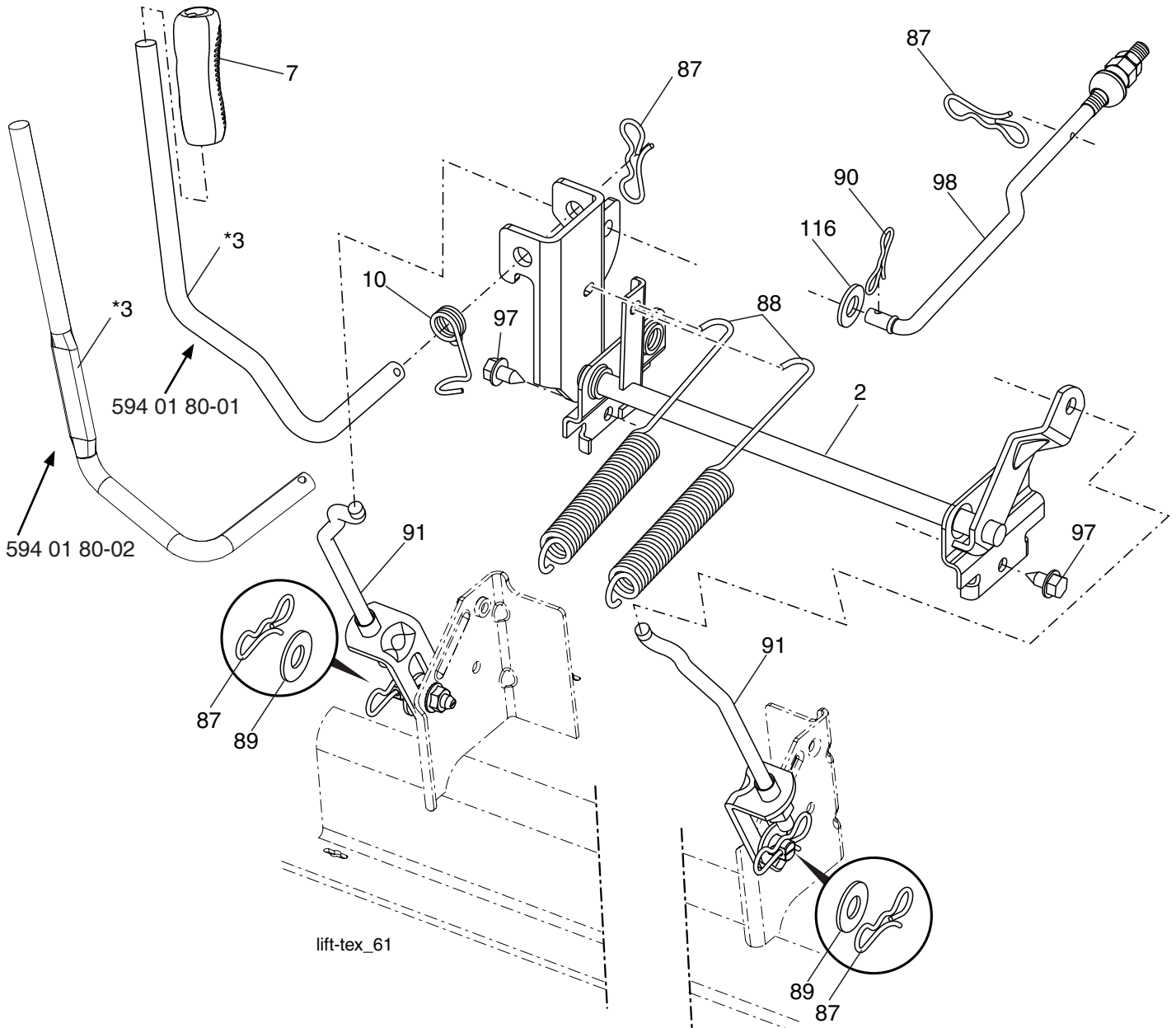
mower_deck 54-tex_43_r1

**TRACTOR - MODEL NO. YTH24V54 (96045006401), PRODUCT NO. 960 45 00-64
MOWER DECK**

KEY PART NO.	PART NO.	DESCRIPTION	KEY PART NO.	PART NO.	DESCRIPTION
1	532 41 82-30	Kit, Svc. 54" Deck Weldment	60	532 18 76-07	Baffle Center
6	532 19 60-66	Cover Mandrel LH	61	585 32 26-05	Plate Reinforcement Front
7	532 19 71-81	Cover Mandrel RH	62	585 32 28-05	Plate Reinforcement Side
11	532 18 72-56	Blade Bagging	63	872 11 05-10	Bolt Carr. 5/16-18 x 1-1/4 Gr. 5
12	532 40 48-51	Rod Anti Sway	97	532 17 85-15	Washer Hardened
14	587 82 03-01	Kit, Mandrel Greaseable, Tall (includes mandrel and bolts)	98	532 19 61-05	Spring Drive
16	596 13 32-01	Washer 13/32 x 13/16 x 2 Ga.	113	596 43 57-01	Bolt Rdhd 5/16-18 x 1.02 Gr. 5
18	596 13 64-01	Bolt, Cup Head, 5/16-18 x 5/8	114	532 18 75-56	Rod Tension Relief
19	532 19 42-08	Pin Cotter 5/16 Bowtie	116	596 43 44-04	Bolt, Shoulder 3/8-16 x 3-5/8"
21	596 04 05-01	Nutlock, Hex. Prvl. 5/16-18	117	589 52 73-01	Gauge Wheel
24	532 10 53-04	Cap Sleeve	120	596 13 49-01	Washer 3/8 x 7/8
25	532 17 81-02	Spring, Torsion	122	532 18 75-57	Bushing Tension Relief
26	532 11 04-52	Nut, Push	184	596 13 57-01	Nutlock, Hex. Prvl. 5/16-18 .68
27	532 18 89-38	Deflector Shield	185	873 90 07-00	Nut Lock Flange 7/16-14 Gr. 5
29	595 29 70-01	Rod, Hinge	187	593 82 40-01	Stud, W/"D" Anti-rotation
32	532 15 35-35	Pulley, Mandrel	189	587 14 05-02	Arm, Fixed, Mwr. Suspension, Edip
33	596 13 48-01	Nut, Hex. 9/16-18 x 1.010	190	532 19 65-39	Bolt Shoulder
34	596 32 26-01	Nut, Crowlock, 3/8-16 unc	192	532 19 84-68	Keeper Belt Idler
35	584 30 93-01	Screw, Sems. 7/16-20 x 1 Hex	194	874 49 07-36	Bolt Carr Sqnk 7/16-24 x 2
39	532 19 73-80	Pulley, Idler, Stationary LH	196	596 33 78-01	Bolt Carriage 3/8 x 16 x 2-1/2
41	584 95 39-01	Bolt Hx Wsh Hd 313-18 x 1.19	241	532 15 29-27	Screw
43	532 19 60-65	Arm, Idler	242	532 41 55-98	Washout Port
46	532 13 77-29	Screw, Thdroll. 1/4-20 x 5/8	245	596 20 41-01	Washer 11/32 x 11/16 x 14
47	587 68 67-01	Belt Deck Drive	--	532 41 64-05	Coupling, Quick Connect
49	873 90 06-00	Nut, Lock Flg. 3/8-16 unc	--	532 41 82-29	Replacement Mower, Complete
50	596 13 63-01	Bolt, Cup Head, 3/8-16 x 2			
52	532 19 73-79	Pulley Idler			
58	532 18 73-42	Baffle Right			
59	532 18 73-44	Baffle Left			

NOTE: All component dimensions given in U.S. inches
1 inch = 25.4 mm

**TRACTOR - MODEL NO. YTH24V54 (96045006401), PRODUCT NO. 960 45 00-64
MOWER LIFT**

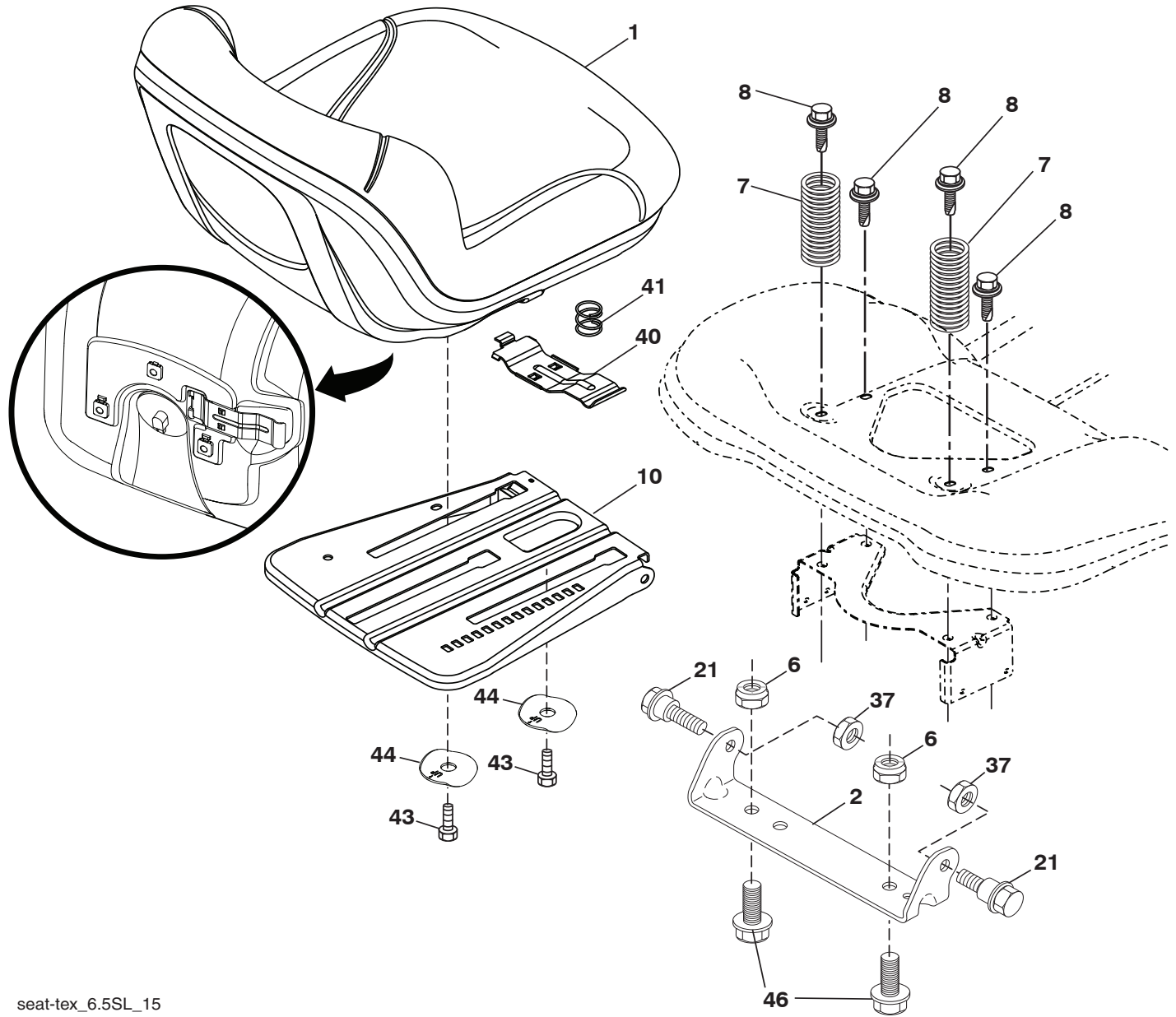


KEY NO.	PART NO.	DESCRIPTION
2	532 42 20-27	Shaft Asm. Cross, Lift
*3	594 01 80-01	Lever Handle, Lift
*3	594 01 80-02	Lever Handle, Lift
7	580 96 23-01	Grip, Lever
10	532 19 63-14	Spring Torsion
87	532 19 42-09	Pin Cotter 7/16 Bow Tie Lock
88	532 41 07-10	Spring Lift Assist
89	819 19 19-12	Washer Clear Zinc
90	532 19 42-08	Pin Cotter 5/16 Bow Tie Lock

KEY NO.	PART NO.	DESCRIPTION
91	589 46 48-05	Link, Assy. Lift, Rear 10.540
97	817 00 06-12	Screw 3/8-16 x .75
98	581 50 69-02	Link, Assy. Mwr. Front, Suspension, 9.820
116	594 97 65-01	Washer Round 15/32 x 15/16 x .065

NOTE: All component dimensions given in U.S. inches
1 inch = 25.4 mm

**TRACTOR - MODEL NO. YTH24V54 (96045006401), PRODUCT NO. 960 45 00-64
SEAT ASSEMBLY**



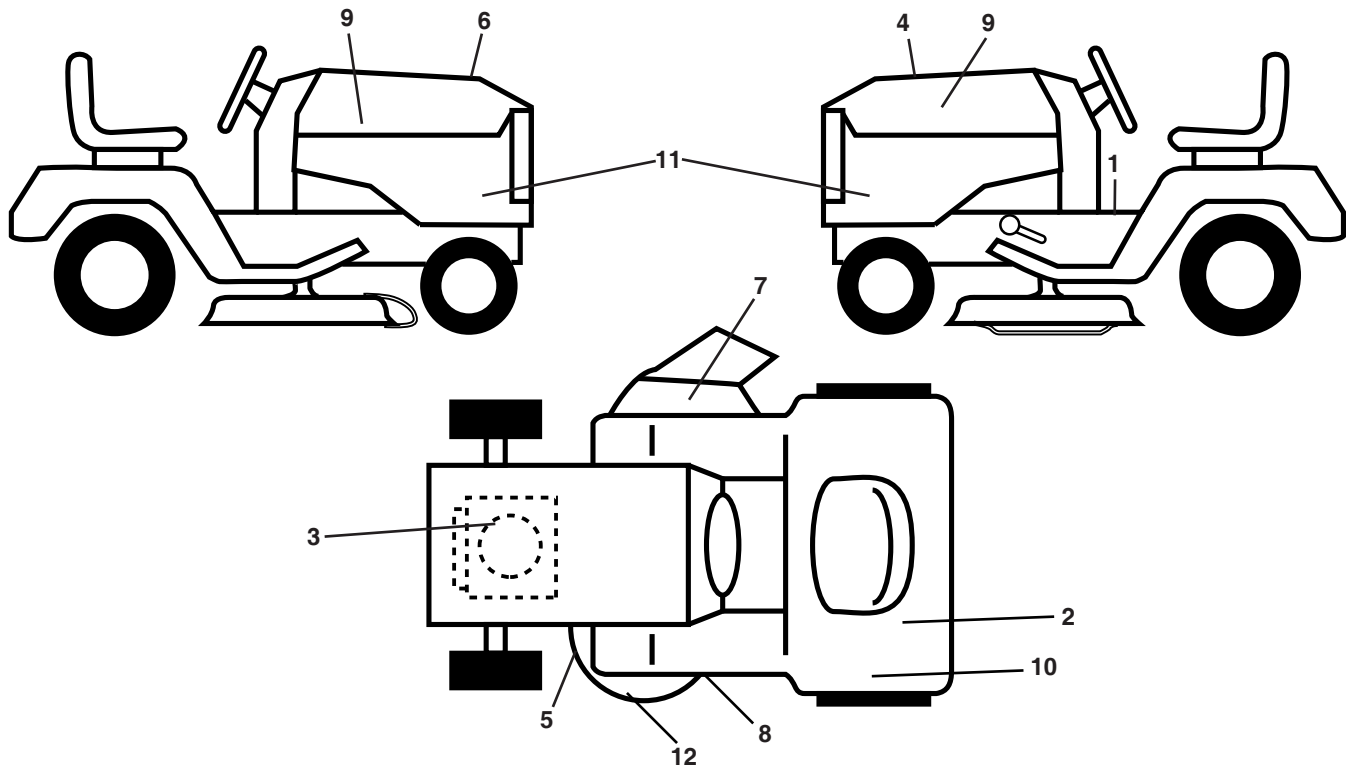
seat-tex_6.5SL_15

KEY NO.	PART NO.	DESCRIPTION
1	532 43 98-22	Seat
2	532 18 01-66	Bracket Pivot Fender
6	873 80 06-00	Nut, Lock w/Ins. 3/8-16 unc
7	589 48 35-01	Spring, Seat Cprsn
8	532 17 18-77	Bolt 5/16-18 unc x 3/4 w/Sems
10	596 65 74-02	Plate, Seat, Slide 3pt. Ms 431
21	587 90 78-01	Bolt, Shoulder 5/16-18 x 5/8
37	596 58 37-02	Nut, W/Nonmetal, Ins. Blk. Zinc
40	595 08 81-02	Handle Slide Seat

KEY NO.	PART NO.	DESCRIPTION
41	532 19 82-00	Spring Latch Seat
43	874 76 06-12	Bolt 3/8-16 x 3/4
44	501 05 18-01	Washer Winged 3/8 ID 1.5 OD
46	588 09 04-01	Bolt 3/8-16 x 1, 1.25

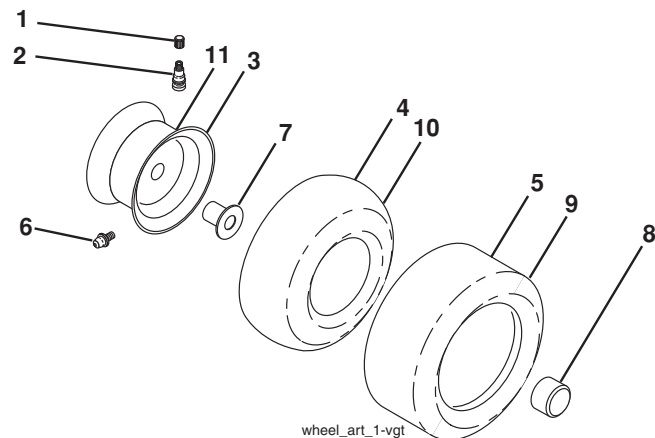
NOTE: All component dimensions given in U.S. inches
1 inch = 25.4 mm

**TRACTOR - MODEL NO. YTH24V54 (96045006401), PRODUCT NO. 960 45 00-64
DECALS**



KEY NO.	PART NO.	DESCRIPTION	KEY NO.	PART NO.	DESCRIPTION
1	581 57 90-01	Decal, Warning	12	599 96 68-01	Decal, Deck Stamp
2	596 62 34-01	Decal, Instru. Dealer Husq.	--	581 72 48-01	Decal, Bypass
3	598 46 79-01	Decal, Engine H.P.	--	532 43 96-81	Pad, Footrest, LH
4	529 53 77-01	Decal, Replacement	--	532 43 96-82	Pad, Footrest, RH
5	581 72 45-02	Decal, Caution	--	114 26 01-32	Manual, Operator's (English/Spanish)
6	580 88 58-01	Decal, E85 Warning	--	114 26 00-24	Manual, Operator's (English/French)
7	584 90 46-01	Decal, Deflect. Warning	--	529 67 76-01	Manual, Parts (English)
8	581 58 00-02	Decal, Mower Sch.	--	587 71 00-26	Manual, QSG (English/Spanish)
9	581 62 73-01	Decal, Hood Logo	--	587 71 01-26	Manual, QSG (English/French)
10	529 40 53-01	Decal, Built in America			
11	586 01 34-01	Decal, Panel Side			

WHEELS AND TIRES



KEY NO.	PART NO.	DESCRIPTION
1	532 05 91-92	Cap, Valve, Tire
2	532 06 51-39	Stem, Valve
3	532 13 83-36	Rim Assembly, Front
4	532 05 99-04	Tube, Front (Service Item Only)
5	532 10 62-22	Tire, Front 15 x 6-6
6	532 00 02-78	Fitting, Grease (Front Wheel Only)
7	532 00 90-40	Bearing, Flange (Front Wheel Only)
8	532 17 50-39	Cap, Axle
9	532 13 84-68	Tire, Rear 20 x 8-8
10	532 00 71-52	Tube, Rear, 9.5 x 8 Service
11	532 13 83-37	Rim Assembly, Rear
--	532 14 43-34	Sealant, Tire (10 oz. Tube)

NOTE: All component dimensions given in U.S. inches
1 inch = 25.4 mm

SERVICE NOTES



www.husqvarna.com