

Illustrated part list IPL update

Instruction

Husqvarna Division; Handheld
Husqvarna



Product Name(s)

H556

Description of change

1. We have removed the label 535 05 80-01 on Clutch cover assy and added a moulded logo "Husqvarna". New colour: **Grey**.
2. New forged adapter has been implemented on the Clutch drum, the new Worm wheel has a new design due to this new adapter. The old Worm wheel 577 60 11-01 will **NOT** fit the new Clutch drum, and new Worm wheel will **NOT** fit the old Clutch drum.
3. New Oil pump 505 19 99-09 with increased diameter has been introduced to fit the new Clutch drum. New colour: **Natural**.

New Clutch drum assy Kit, 598 93 77-04 is added. The Kit consist of: The new Clutch drum assy 575 26 10-08, new Oil pump 505 19 99-09 and new Worm wheel 586 20 46-01.

4. A new Ball bearing 525 43 42-04 is replacing -03.

Comments

1. Clutch cover assy 525 74 33-06 is fully exchangeable. New colour: **Grey**.
2. Clutch drum and Worm wheel are **NOT** exchangeable.
3. Oil Pump is fully exchangeable. New colour: **Natural**.
Clutch drum assy kit 598 93 77-04 is fully exchangeable.
4. Ball bearing 525 43 42-04 is fully exchangeable with 525 43 42-03.

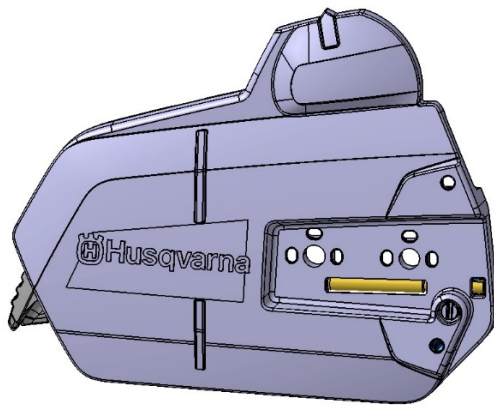
Introduced from

Serial number / Date	Remark
S/n 20202200049	Valid for Clutch drum assy / Worm wheel / Oil pump
S/n 20202400001	Valid for Clutch cover / Ball bearing

Page Title	Ref. no	New part no	Name	Excl. part no.	Remark
Chain brake & clutch cover	5	525 74 33-06	Clutch cover assy	525 74 33-04	
	14	523 05 80-01	Label		Remain as spare part
Clutch & oil pump	3	575 26 10-08	Clutch drum assy RIM 3/8 7T		New spare part
	6	586 20 46-01	Worm wheel 3/8 Large SMS		New spare part
	7	505 19 99-09	Oil pump assy Large SMS	505 19 99-06	
	21	598 93 77-04	Clutch drum assy KIT 3/8 Large SMS		New spare part
Crankshaft	3	525 43 42-04	Ball bearing	525 43 42-03	
Crankcase	14	593 80 60-01	Guide bushing	501 27 08-01	

1. Clutch cover

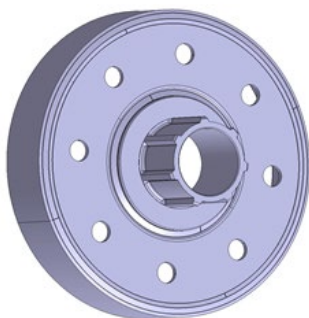
New version.



525 74 33-06

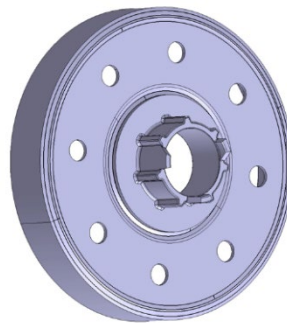
2. Clutch drum

New version.



575 26 10-08

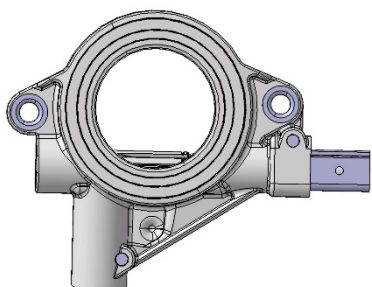
Old version.



575 26 10-06

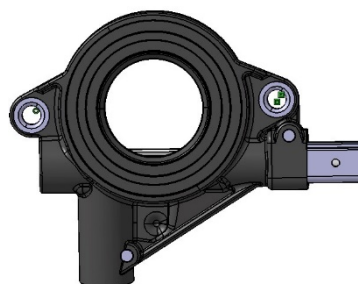
3. Oil pump

New version.



505 19 99-09

Old version.

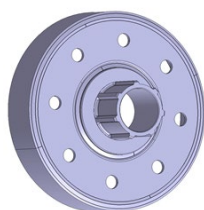


505 19 99-06

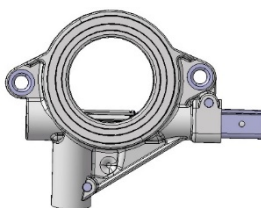


Clutch drum assy kit 598 93 77-04

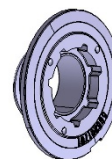
New



+

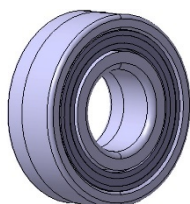


+



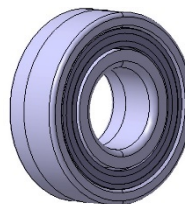
4. Crankshaft

New version.



525 43 42-04

Old version.



525 43 42-03

