

# Illustrated Parts List - IPL Update



Product Name(s)

**H560XP, H560XPG**

Description of change

1. New improved design, nut with integrated washer. 585 32 18-01 was 503 22 04-01.
2. New screw (torx) for Ignition Module, easier assembly in production. 525 88 74-01 was 503 21 38-13.

Comments

Nut with integrated washer and Screw: Fully interchangeable.

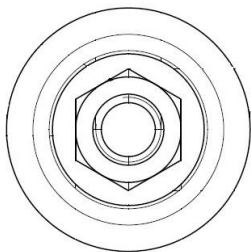
Introduced from

Serial number / Date	Remark
20151200001	Nut with integrated washer 585 32 18-01.
20151000001	Screw 525 88 74-01.

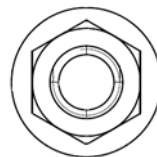
IPL updates

Page Title	Ref. no	New part no	Name	Excl. part no.	Remark
Ignition System	6	585 32 18-01	Nut	503 22 04-01	Remain as spare part.
	14	525 88 74-01	Screw	503 21 28-13	Remain as spare part.

## 1. Nut



585 32 18-01



503 22 04-01