

Illustrated Parts List - IPL Update



Product Name(s)

H562XP/XPG

Description of change

1. New Crankshaft 575 54 52-15 with new ball bearings. New ball bearings with improved durability.
2. New Ball bearings 525 43 42-03 and 505 13 35-03 with improved durability.
3. New Crankcase, assy 575 38 02-18 with new ball bearings. The Clutch side of the crankcase is made of Aluminium, which will increase the durability.
4. New Screw 510 02 06-02 for oil pump. This screw has a Micro coating, Dri Loc added for sealing. This due to the screw holes for the oil pump goes straight through the new crankcase.
5. A New Clutch, assy kit 589 80 90-01 with increased lifetime has been introduced. This kit consists of Clutch, assy and an instruction.

The Old spring 580 65 35-02 **can't** be used on the New Clutch 589 80 90-01. The New spring 502 16 47-01 **can't** be used on the Old Clutch 574 23 61-04.
6. A New Air filter, 522 67 50-04 has been introduced. This air filter has a new filter fabric with 25 µm. The new filter has an orange color.
The filter has replaced the 44 µm filter on PNC:s 562XP/XPG: 966 56 99, 966 57 01 and 966 57 05.
44 µm filter remains as spare part.

Comments

This update is fully exchangeable except for the Clutch spring. The Old spring 580 65 35-02 **can't** be used on the New Clutch 589 80 90-01 and The New spring 502 16 47-01 **can't** be used on the Old Clutch 574 23 61-04.

Introduced from

Serial number / Date	Remark
s/n 20162400208	Valid for Bearings and Crankshaft.
s/n 20164300001	Valid for Crankcase assy. and Screw IHSCM.
s/n 20164100193	Valid for Clutch assy.
s/n 20164300001	Valid for Air filter.

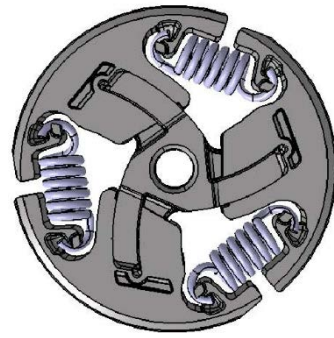
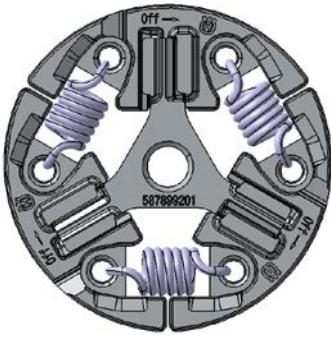
IPL updates

Page Title	Ref. no	New part no	Name	Excl. part no.	Remark
Crankshaft	1	575 54 52-15	Crankshaft assy	575 54 52-11	
	2	505 13 35-03	Ball bearing	505 13 35-02	
	3	525 43 42-03	Ball bearing	525 43 42-02	
Crankcase	5	575 38 02-18	Crankcase, assy	575 38 02-13	
Carburetor & Air filter	1	522 67 50-04	Air filter		New spare part.
Clutch & Oil pump	1	589 80 90-01	Clutch assy, kit	574 23 61-04	
	2		Clutch spring	580 65 35-02	Remain as spare part only for the old Clutch 574 23 61-04.
	2	502 16 47-01	Clutch spring		New spare part only for new Clutch 589 80 90-01.
	14	510 02 06-02	Screw IHSCM	510 02 06-01	Remain as spare part.

5. Clutch kit.

New version.

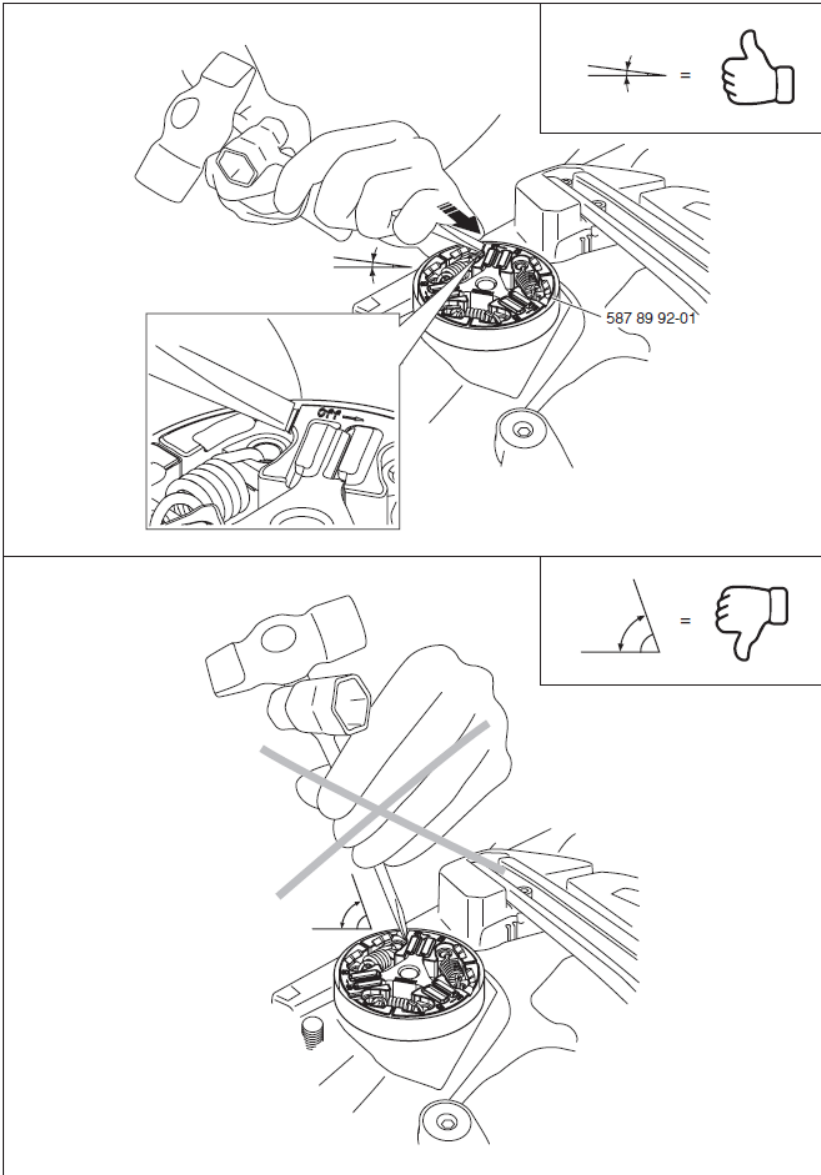
Old version.



589 80 90-01

574 23 61-04

+



589 80 91-01