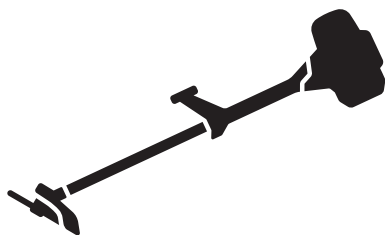




# Husqvarna®



555FX, 555FXT, 555RXT, 555FRM

---

## Contents

---

Introduction.....	2	Troubleshooting.....	30
Safety.....	5	Transportation and storage.....	31
Assembly.....	11	Technical data.....	31
Operation.....	15	Accessories.....	33
Maintenance.....	22	Declaration of Conformity.....	35

---

## Introduction

---

### Product description

This product is a brushcutter with a combustion engine.

Work is constantly in progress to increase your safety and efficiency during operation. Speak to your servicing dealer for more information.

### Intended use

Use the product with a saw blade, a grass blade, shredder blade or a trimmer head to cut different types

of vegetation. Do not use the product for other tasks than grass trimming, grass clearing, forestry clearing and shredding. Use a saw blade to cut fibrous types of wood. Use a grass blade or trimmer head to cut grass.

---

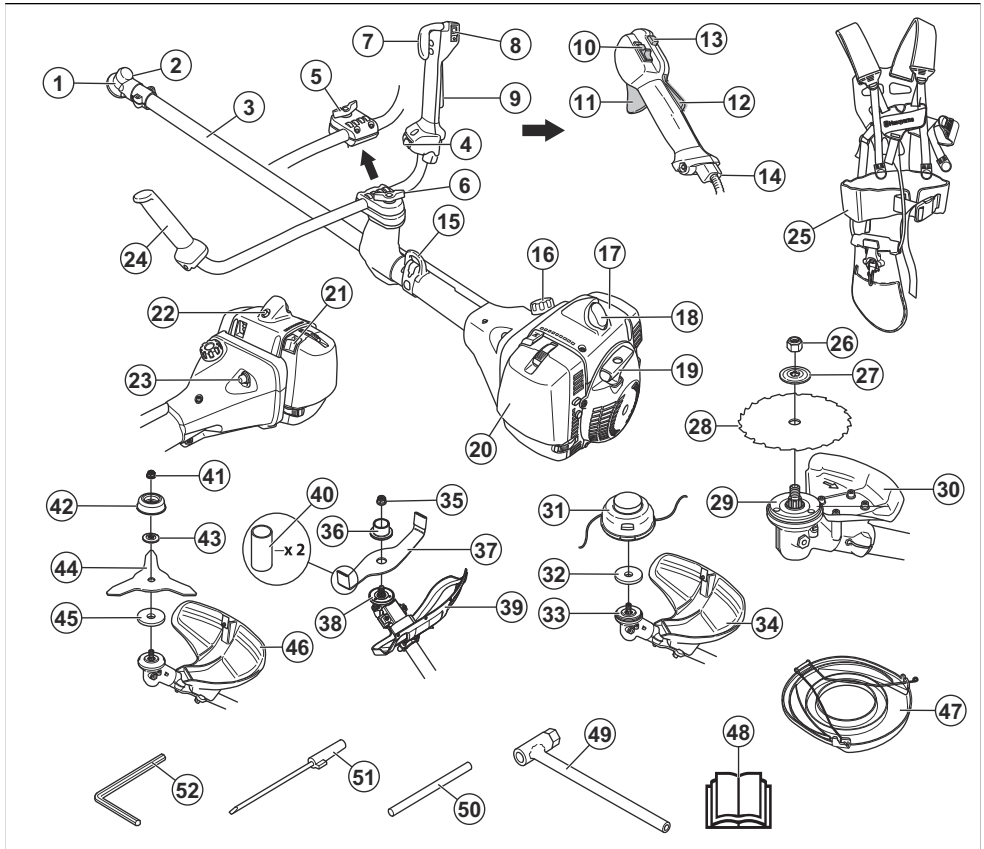
**Note:** National or local regulations can regulate the use. Comply to given regulations.

---

Only use the product with accessories that are approved by the manufacturer. Refer to *Accessories on page 33*.

---

## Product overview



- |   |  |
|---|--|
| 1. Bevel gear                                 | 19. Starter rope handle                      |
| 2. Grease filler cap                          | 20. Air filter cover                         |
| 3. Shaft                                      | 21. Choke control                            |
| 4. Switch for heated handles (555FXT)         | 22. Decompression valve                      |
| 5. Handle adjustment (555RXT)                 | 23. Air purge bulb                           |
| 6. Handle adjustment (555FX, 555FXT, 555FRM)  | 24. Handlebar                                |
| 7. Throttle trigger (555FX, 555FXT)           | 25. Harness                                  |
| 8. Stop switch (555FX, 555FXT)                | 26. Locknut (555FX, 555FXT)                  |
| 9. Throttle trigger lockout (555FX, 555FXT)   | 27. Support flange (555FX, 555FXT)           |
| 10. Stop switch (555RXT, 555FRM)              | 28. Saw blade (555FX, 555FXT)                |
| 11. Throttle trigger (555RXT, 555FRM)         | 29. Drive disc (555FX, 555FXT)               |
| 12. Throttle trigger lockout (555RXT, 555FRM) | 30. Cutting attachment guard (555FX, 555FXT) |
| 13. Start throttle button (555RXT, 555FRM)    | 31. Trimmer head (555RXT)                    |
| 14. Throttle wire adjustment (555RXT, 555FRM) | 32. Metal cup (555RXT)                       |
| 15. Suspension point                          | 33. Drive disc (555RXT)                      |
| 16. Fuel tank                                 | 34. Cutting attachment guard (555RXT)        |
| 17. Cylinder cover                            | 35. Locknut (555FRM)                         |
| 18. Spark plug and spark plug cap             | 36. Support flange (555FRM)                  |
|   | 37. Locknut (555FRM)                         |
|   | 38. Trimmer head (555RXT)                    |
|   | 39. Drive disc (555RXT)                      |
|   | 40. Support flange (555FRM)                  |
|   | 41. Locknut (555FRM)                         |
|   | 42. Support flange (555FRM)                  |
|   | 43. Locknut (555FRM)                         |
|   | 44. Support flange (555FRM)                  |
|   | 45. Locknut (555FRM)                         |
|   | 46. Support flange (555FRM)                  |
|   | 47. Trimmer head (555RXT)                    |
|   | 48. Trimmer head (555RXT)                    |
|   | 49. Trimmer head (555RXT)                    |
|   | 50. Trimmer head (555RXT)                    |
|   | 51. Trimmer head (555RXT)                    |
|   | 52. Trimmer head (555RXT)                    |

37. Shredder blade (555FRM)
38. Drive disc (555FRM)
39. Cutting attachment guard (555FRM)
40. Transport guard (555FRM)
41. Locknut (555RXT)
42. Support cup (555RXT)
43. Support flange (555RXT)
44. Grass blade (555RXT)
45. Drive disc (555RXT)
46. Cutting attachment guard (555RXT)
47. Transport guard (555FX, 555FXT, 555RXT)
48. Operator's manual
49. Socket wrench
50. Locking pin
51. Carburetor screwdriver
52. Hex key



Risk of blade thrust if the cutting equipment touches an object that it does not immediately cut. The product can cut off body parts. Keep a minimum of 15 m/49 ft distance to persons and animals during operation of the product.



Use approved protective gloves.



Use heavy-duty slip-resistant boots.



Air purge bulb.



Choke.



Idle adjustment screw.



High speed needle.



Low speed needle.



Fuel.



Decompression valve.



Heated handles.



Only use a flexible cutting wire. Do not use metal cutting attachments. Apply this for grass guard accessory.

## Symbols on the product



Stop.



**WARNING!** Be careful and use the product correctly. This product can cause serious injury or death to the operator or others.



Read the operator's manual carefully and make sure that you understand the instructions before use.



Use a protective helmet in locations where objects can fall on you. Use approved hearing protection. Use approved eye protection.



Maximum speed of the output shaft.



The product agrees with the applicable EC directives.



This product conforms to the applicable UK regulations.



The product can cause objects to eject, which can cause injury.



Keep a minimum distance of 15 m/49 ft to persons and animals during operation of the product.



Noise emission to the environment label as per EU and UK directives and regulations, and New South Wales legislation "Protection of the Environment Operations (Noise Control) Regulation 2017". The guaranteed sound power level of the product is specified in *Technical data on page 3* and on the label.

yyyywwxxxx

The rating plate shows the serial number. **yyyy** is the production year and **ww** is the production week.

**Note:** Other symbols/decals on the product refer to certification requirements for other commercial areas.

## Product liability

As referred to in the product liability laws, we are not liable for damages that our product causes if:

- the product is incorrectly repaired.
- the product is repaired with parts that are not from the manufacturer or not approved by the manufacturer.
- the product has an accessory that is not from the manufacturer or not approved by the manufacturer.
- the product is not repaired at an approved service center or by an approved authority.

## Euro V Emissions



**WARNING:** Tampering with the engine voids the EU type-approval of this product.

## Safety

### Safety definitions

Warnings, cautions and notes are used to point out specially important parts of the manual.



**WARNING:** Used if there is a risk of injury or death for the operator or bystanders if the instructions in the manual are not obeyed.



**CAUTION:** Used if there is a risk of damage to the product, other materials or the adjacent area if the instructions in the manual are not obeyed.

**Note:** Used to give more information that is necessary in a given situation.

### General safety instructions



**WARNING:** Read the warning instructions that follow before you use the product.

- This product produces an electromagnetic field during operation. This field may under some circumstances interfere with active or passive medical implants. To reduce the risk of serious or fatal injury we recommend persons with medical implants to consult their physician and the medical implant manufacturer before operating this product.
- Do not use the product if you are tired, ill, or under the influence of alcohol, drugs or medicine. This has a negative effect on your vision, alertness, coordination and judgment.

### Safety instructions for assembly



**WARNING:** Read the warning instructions that follow before you use the product.

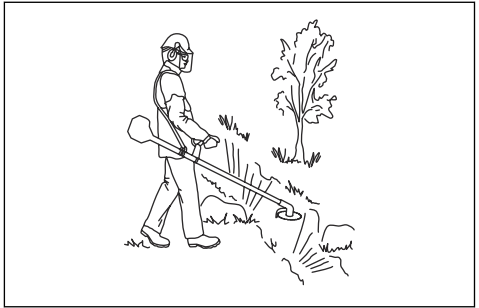
- Use approved protective gloves when you assemble the product and cutting attachment.
- Remove the spark plug cap from the spark plug before you assemble the product.
- Make sure that the correct handlebar and cutting attachment guard are assembled before you operate the product.
- A damaged or incorrect cutting attachment guard can cause injury. Do not use a cutting attachment without an approved cutting attachment guard.

- Attach the clutch cover and shaft correctly before you start the product.
- The drive disc and support flange must engage correctly in the center hole of the cutting attachment. A cutting attachment that is attached incorrectly can cause injury or death.
- Attach the harness to the product to prevent injury to the operator or others.

## Safety instructions for operation



**WARNING:** Read the warning instructions that follow before you use the product.



- Learn and understand the difference between forestry clearing, grass clearing and grass trimming before you use the product.
- Use personal protective equipment, refer to *Personal protective equipment on page 7*.
- Long-term exposure to noise can result in permanent hearing loss. Always use approved hearing protection.
- Listen for warning signals and loud voices when you use hearing protection. Always remove your hearing protection when the engine stops.
- Never use the product if it is changed or damaged.
- Make sure that the spark plug cap and ignition lead are not damaged to prevent the risk of electrical shock.
- Look around the work area to make sure that no persons, animals or objects have a negative effect on the safety of the operation of the product.
- Look around the work area to make sure that no persons or animals touch the cutting attachment or are hit by objects that are ejected from the cutting attachment.
- Do not use the product in a situation or location where you can not get aid if an accident occurs.
- Do not use the product without an approved cutting attachment guard.
- Make sure that persons or animals keep a distance of a minimum of 15 m/50 ft during work. Always look behind you before you turn around with the product. Stop the product immediately if a person or animal enters the 15 m/50 ft safety zone. If more than 1 operator does work in the same area, keep a safety distance of a minimum of 2 times the tree height and a minimum of 15 m/50 ft.
- Examine the work area. Avoid loose objects, such as stones, broken glass, nails, steel wire and string, that can eject or wind around the cutting attachment.
- Make sure that you can move safely and have a safe stance. Examine the area around you for obstacles such as roots, rocks, branch and ditches. Be careful during work on slopes.
- Do not overreach. Keep a stable position of the feet and a good balance at all times.
- Before you start the product, put it on a flat surface, at a minimum of 3 m/10 ft from the fuel source and from where you fill fuel. Make sure that there are no objects near or touching the cutting attachment.
- If the cutting attachment rotates at idle speed, let a service agent adjust it. Do not use the product until it is adjusted or repaired.
- Look out for thrown objects. Always use approved eye protection and keep away from the cutting attachment guard. Stones and other small objects can eject into your eyes and cause blindness or other injuries.
- Do not put the product down with the engine on unless you have it in clear view.
- Do not remove the cut material, or let other persons remove cut material, while the engine is on or the cutting equipment rotates, as this can result in serious injury.
- Always stop the engine and make sure that the cutting equipment does not rotate before you remove material that is wound around the blade shaft or caught between the cutting attachment guard and the cutting attachment.
- Be careful when you remove material from around the cutting equipment. The bevel gear gets hot during operation and can cause burn injuries.
- The exhaust fumes from the engine are hot and can contain sparks. Risk of fire. Be careful around dry and flammable material.
- Never use the product indoors or in spaces lacking proper ventilation. Exhaust fumes contain carbon monoxide, an odourless, poisonous and highly dangerous gas.
- Stop the engine before you move to a new work area. Always attach the transport guard before you move the equipment.
- Overexposure to vibration can lead to circulatory damage or nerve damage in persons who have poor circulation. Speak to your physician if you experience symptoms of overexposure to vibration. Such symptoms include numbness, loss of feeling, tingling, pricking, pain, loss of strength, changes in skin colour or condition. These symptoms usually

show in the fingers, hands or wrists. The risk increases at low temperatures.

## Personal protective equipment



**WARNING:** Read the warning instructions that follow before you use the product.

- Always use approved personal protective equipment when you use the product. Personal protective equipment cannot fully prevent injury but it decreases the degree of injury if an accident does occur. Let your dealer help you select the correct equipment.
- Use a helmet if the trees in the work area have a height of more than 2 m/6.5 ft.
- Use approved hearing protection.
- Always use approved protective goggles that comply with ANSI Z87.1 standard in the USA or EN 166 in EU countries. Use visor for face protection. Visor is not enough to protect the eyes.



- Use gloves when it is necessary, for example when you attach, examine or clean the cutting equipment.
- Use protective boots with steel toe-cap and non-slip soles.
- Use clothing made of a strong fabric. Always use heavy, long pants and long sleeves. Do not use loose clothing that can catch on twigs and branches. Do not use jewelry, short pants or sandals. Do not go with bare feet. Put your hair up safely above shoulder level.



- Keep first aid equipment near.



## Safety devices on the product

For information about where to find the safety devices, see *Product overview on page 3*.



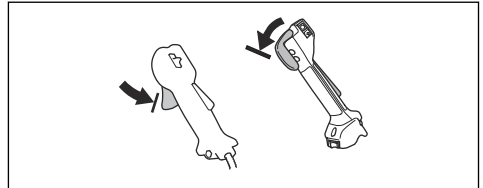
**WARNING:** Read the warning instructions that follow before you use the product.

- Do not use a product with damaged safety devices. Do a check of and do maintenance on the safety devices regularly. If the safety devices are damaged, speak to your Husqvarna service agent.
- Do not make changes to safety devices. Do not use the product if protective covers, safety switches or other protective devices are not attached or are damaged.
- For all service and repair work on the product, especially for the safety devices, special training is necessary. If the safety devices fail the checks given in this operator's manual, you must let a service agent help you. We guarantee that professional repairs and service is available. If your dealer is not a service agent, speak to them for information about the nearest service agent.
- Do not use a cutting attachment without an approved and correctly attached cutting attachment guard. See *To assemble the cutting equipment on page 12*.

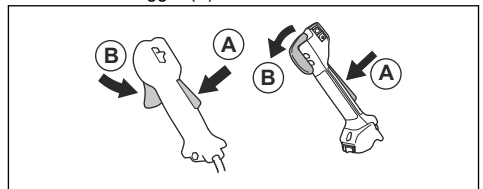
### To do a check of the throttle trigger lockout

The throttle trigger lockout locks the throttle trigger at the idle position.

1. Press the throttle trigger (B) and make sure that it is locked.

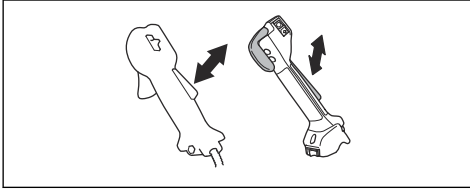


2. Press the throttle trigger lockout (A). Make sure that the throttle trigger (B) is released.

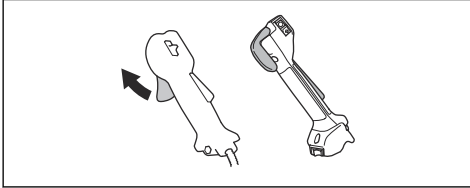


3. Release the handle and make sure that the throttle trigger lockout (A) and the throttle trigger (B) go back to their initial positions.

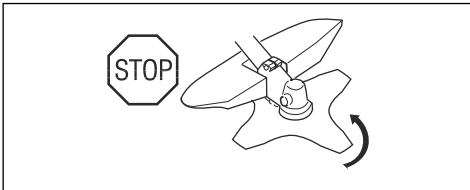
4. Press the throttle trigger lockout (A) and make sure that it goes back to its initial position when you release it.



5. Press the throttle trigger (B) and make sure that it goes back to its initial position when you release it.

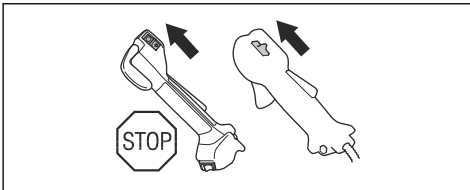


6. Start the engine and apply full throttle.
7. Release the throttle trigger and make sure that the cutting attachment stops.



#### To do a check of the stop switch

1. Start the engine.
2. Move the stop switch to the stop position and make sure that the engine stops.

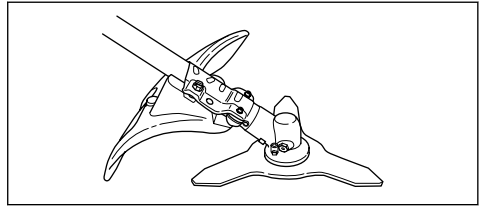


#### To do a check of the cutting attachment guard

The cutting attachment guard stops objects that ejects in the direction of the operator. It also prevents injuries that occur if you touch the cutting attachment.

1. Stop the engine.

2. Do a visual check for damages, for example cracks.

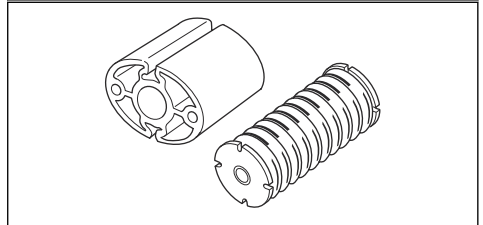
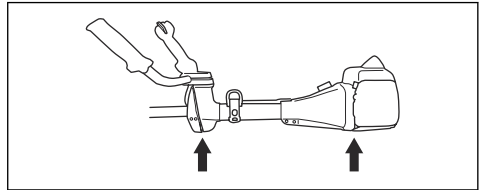


3. Replace the cutting attachment guard if it is damaged.

#### To do a check of the vibration damping system

The vibration damping system decreases vibration in the handles to a minimum which makes the operation easier.

1. Stop the engine.
2. Do a visual check for deformation and damage for example, cracks.
3. Make sure you attach the elements of the vibration damping system are correctly.



#### To do a check of the safety-release mechanism



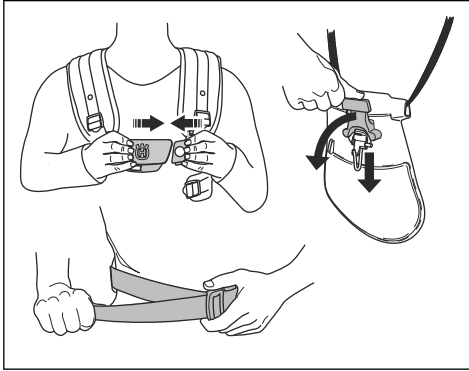
**WARNING:** Do not use a harness with a damaged safety-release mechanism.

The safety-release mechanism lets the operator remove the product quickly from the harness if there is an emergency.

1. Stop the engine.
2. Do a visual check for damages, such as cracks.

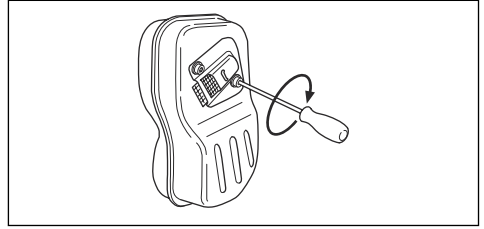


3. Release and attach the safety-release mechanism to make sure that it operates correctly.

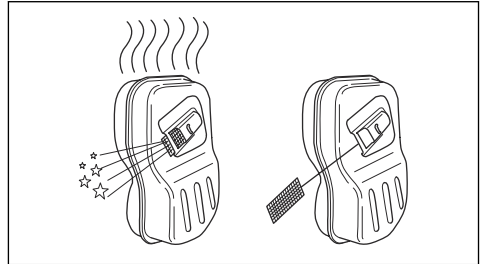


- do not use pressurized air to clean the spark arrester screen;
- use a steel brush and brush away from your body when cleaning the spark arrester.

3. Make sure that the muffler is correctly attached to the product.



4. If the muffler on your product has a spark arrester screen, do a visual check.



- a) Replace the spark arrester screen if it is damaged.
- b) Clean the spark arrester screen if it is blocked. See *To clean the muffler on page 24* for more information.

#### To do a check of the muffler



**WARNING:** Do not use a product with a damaged muffler.



**WARNING:** The mufflers become very hot during and after operation, also at idle speed. Use protective gloves to prevent burn injuries.

The muffler keeps noise levels to a minimum and sends exhaust fumes away from the operator.

1. Stop the engine.
2. Do a visual check for damage and deformation.



#### To do a check of the locknut



**WARNING:** Stop the engine, use protective gloves and be careful around the sharp edges of the cutting attachment.

- Make sure that the locknut is attached and tightened correctly. Refer to *To attach and remove the locknut on page 27*.

#### Cutting attachment



**WARNING:** Read the warning instructions that follow before you use the product.

- Do the regular maintenance. Let an approved service center regularly examine the cutting attachment to do adjustments or repairs.
  - The performance of the cutting attachment increases.
  - The life of the cutting attachment increases.



**WARNING:** A used muffler/spark arrester and spark arrester mounting face may contain deposits of combustion particles on the surfaces that may be carcinogenic. To avoid skin contact and inhalation of such particles when cleaning and/or servicing the spark arrester, make sure you always:

- wear gloves;
- clean and/or service in a well ventilated area;

- The risk of accidents decreases.
- Only use an approved cutting attachment guard. Refer to *Accessories on page 33*.
- Do not use a damaged cutting attachment.

### Grass trimmer head

- Make sure that you wind the grass trimmer line tightly and equally around the drum to decrease the vibration.
- Use only the approved grass trimmer heads and grass trimmer lines. Refer to *Accessories on page 33*.
- Use a correct length of the grass trimmer line. A long grass trimmer line uses more engine power than a short grass trimmer line.
- Make sure that the cutter on the cutting attachment guard is not damaged.
- Soak the grass trimmer line in water for 2 days before you attach the grass trimmer line to the product. This increases the life of the grass trimmer line.
- Refer to the instructions for the cutting attachment to use the correct procedure to load the cord and the correct cord diameter.

### Saw blade and grass blade

- Use correctly sharpened blades. An incorrectly sharpened or damaged blade increases the risk of injury.
- Use correctly set blades. Correct blade set is 1 mm. An incorrectly set blade increases the risk of injury and damage.
- To sharpen and set the blade correctly, refer to the instructions that come with the blade.

### Fuel safety



**WARNING:** Read the warning instructions that follow before you use the product.

- Do not mix the fuel indoor or near a heat source.
- Do not start the product if there is fuel or engine oil on the product. Remove the unwanted fuel/oil and let the product dry. Remove unwanted fuel from the product.
- If you spill fuel on your clothing, change clothing immediately.
- Do not get fuel on your body, it can cause injury. If you get fuel on your body, use a soap and water to remove the fuel.
- Do not start the engine if you spill oil or fuel on the product or on your body.
- Do not start the product if the engine has a leak. Examine the engine for leaks regularly.
- Be careful with fuel. Fuel is flammable and the fumes are explosive and can cause injuries or death.

- Do not breathe in the fuel fumes, it can cause injury. Make sure that there is sufficient airflow.
- Do not smoke near the fuel or the engine.
- Do not put warm objects near the fuel or the engine.
- Do not add the fuel when the engine is on.
- Make sure that the engine is cool before you refuel.
- Before you refuel, open the fuel tank cap slowly and release the pressure carefully.
- Make sure there are sufficient airflow when refueling and mixing fuel (petrol and two-stroke oil) or draining the fuel tank.
- Fuel and fuel vapor are highly flammable and can cause serious injury when inhaled or allowed to come into contact with the skin. For this reason, observe caution when handling fuel and make sure there is sufficient airflow.
- Tighten the fuel tank cap carefully or a fire can occur.
- Move the product at a minimum of 3 m (10 ft) from the position where you filled the tank before a start.
- Do not put too much fuel in the fuel tank.
- Make sure that a leak cannot occur when you move the product or fuel container.
- Do not put the product or a fuel container where there is an open flame, spark or pilot light. Make sure that the storage area does not contain an open flame.
- Only use approved containers when you move the fuel or put the fuel into storage.
- Empty the fuel tank before long-term storage. Obey the local law on where to dispose fuel.
- Clean the product before long-term storage.
- Remove the spark plug cap before you put the product into storage to make sure that the engine does not start accidentally.

### Safety instructions for maintenance



**WARNING:** Read the warning instructions that follow before you use the product.

- Stop the engine, make sure that the cutting attachment stops. Remove the cylinder cover and disconnect the spark plug cap before you do the maintenance.
- The exhaust fumes from the engine contain carbon monoxide, an odourless, poisonous and very dangerous gas that can cause death. Do not run the product indoors or in closed spaces.
- The exhaust fumes from the engine are hot and can contain sparks. Do not run the product indoors or near flammable material.
- Accessories and changes to the product that are not approved by the manufacturer, can cause serious injury or death. Do not change the product. Always use original accessories.

- If the maintenance is not done correctly and regularly, there is an increased risk of injury and damage to the product.
- Only do the maintenance as this operator's manual recommends. Let an approved Husqvarna service agent do all other servicing.

- Let an approved Husqvarna service agent do servicing on the product regularly.
- Replace damaged, worn or broken parts.

## Assembly

### Introduction



**WARNING:** Before you assemble the product, you must read and understand the safety chapter.

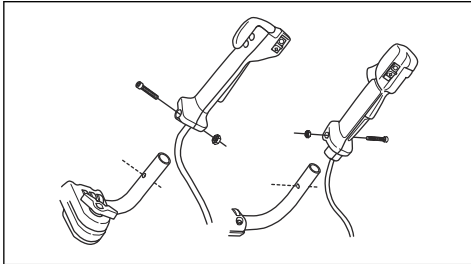


**WARNING:** Remove the spark plug cable from the spark plug before you assemble the product.

### To attach the throttle handle

**Note:** On some models, the throttle handle is attached at the factory.

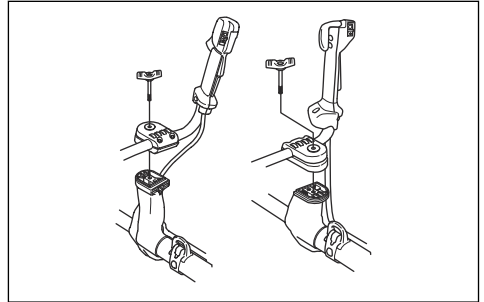
1. Remove the nut and screw at the bottom of the throttle handle.
2. Put the throttle handle onto the right side of the handlebar.



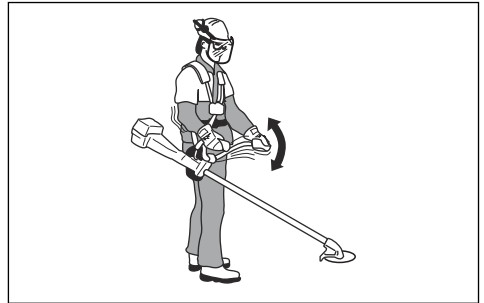
3. Align the screw hole in the throttle handle with the hole in the handlebar.
4. Put the screw into the hole at the bottom of the throttle handle, through the handlebar.
5. Put back and tighten the nut.

### To assemble the handlebar

1. Remove the knob and attach the handlebar as given in the illustration.



2. Tighten the knob lightly.
3. Put on the harness and hang the product from the suspension point.
4. Adjust the handle to put the product in a comfortable work position.

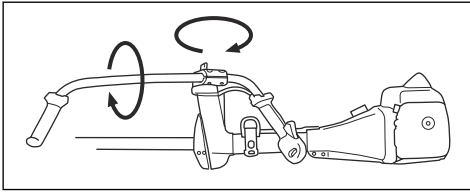


5. Tighten the knob fully.

### To set the handlebar in transport position

1. Loosen the knob.
2. Turn the handlebar clockwise until the throttle handle touches the battery.

- Turn the handlebar around the shaft.



- Tighten the knob.

## To assemble the cutting equipment

The cutting equipment includes a cutting attachment and a cutting attachment guard.



**WARNING:** Use protective gloves.



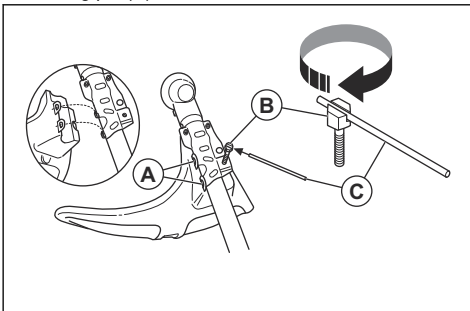
**WARNING:** Always use the cutting attachment guard that is recommended for the cutting attachment. See *Accessories on page 33*.



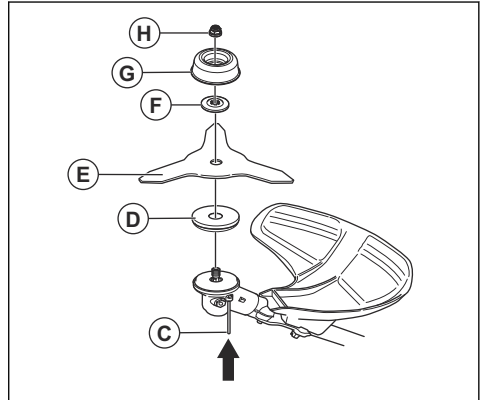
**WARNING:** An incorrectly attached cutting attachment can result in injury or death.

## To attach the grass blade guard/combination guard and the grass blade (555FX, 555FXT)

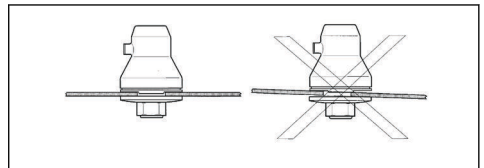
- Install the grass blade guard/combination guard on the support hooks (A) on the shaft. Turn the grass blade guard/combination guard and attach it with the bolt (B) on the opposite side of the shaft. Use the locking pin (C).



- Install the drive disc (D) on the output shaft. Turn the output shaft to align 1 of the holes in the drive disc (D) with the related hole in the gear housing.



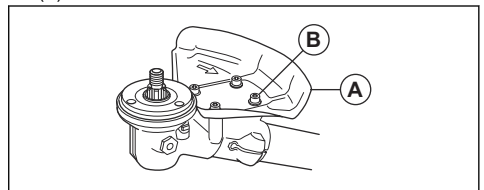
- Install the locking pin (C) in the hole to lock the shaft.
- Put the grass blade (E), support flange (F) and the support cup (G) on the output shaft.
- Make sure that the drive disc and support flange engages correctly in the centre hole of the grass blade.



- Install the locknut (H). Tighten the locknut to 35-40 Nm with the socket wrench.
- Remove the locking pin (C) from the hole.

## To attach the saw blade guard (555FX, 555FXT)

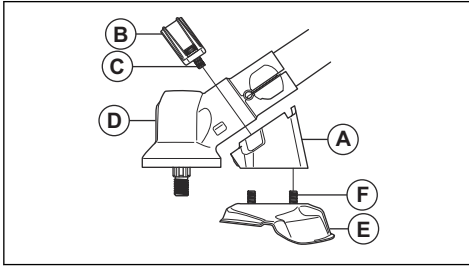
- Attach the saw blade guard (A) with the 4 screws (B).



## To attach the saw blade guard (555RXT, 555FRM)

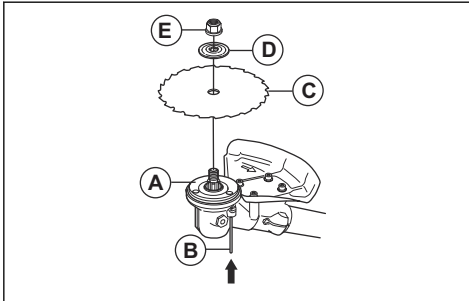
- Attach the holder (A) and bracket (B) with 2 bolts (C) on the gear housing (D).

- Attach the saw blade guard (E) with 4 bolts (F) in the holder (A).

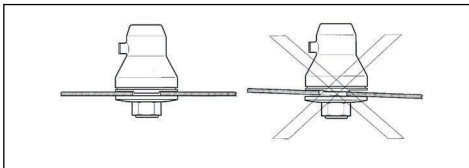


### To attach the saw blade

- Put the drive disc (A) on the output shaft.
- Turn the output shaft to align 1 of the holes in the drive disc with the related hole in the gear housing.
- Put the locking pin (B) in the hole to lock the shaft.
- Put the saw blade (C) and the support flange (D) on the output shaft.

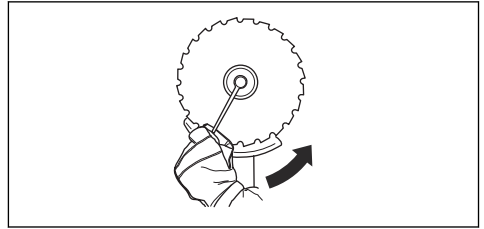


- Make sure that the drive disc and support flange engages correctly in the center hole of the grass blade.



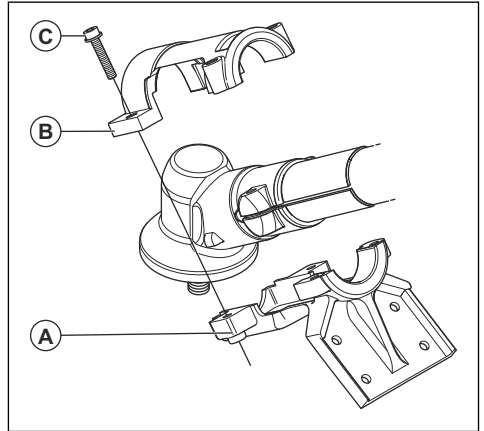
- Attach the locknut (E).

- Tighten the locknut with the socket wrench. Hold the shaft of the socket wrench near the blade guard. Tighten in the opposite direction to how the cutting attachment rotates. Tighten it to a torque of 35-50 Nm.

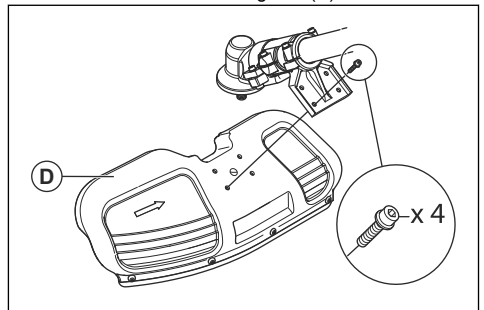


### To attach the shredder blade guard and the shredder blade (555RXT, 555FRM)

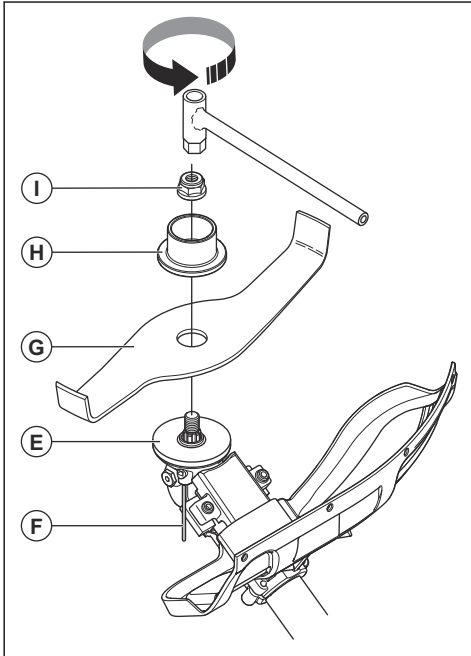
- Install the holder (A) and bracket (B) with 4 bolts (C) on the gear housing.



- Attach the shredder blade guard (D) with 4 bolts.



3. Install the drive disc (E). Turn the output shaft until 1 of the holes in the drive disc aligns with the related hole in the gear housing.



4. Install the locking pin (F) in the hole to lock the shaft.
5. Install the shredder blade (G) and support flange (H) on the output shaft.
6. Attach the locknut (I) with the socket wrench. Tighten the locknut to 35-50 Nm.

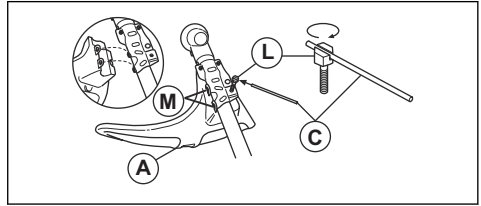


**WARNING:** If the locknut is not tightened correctly, it can cause the shredder blade to come off. This can cause serious injury or death to the operator or others.

### To attach the trimmer guard or combination guard for trimmer head and plastic blades

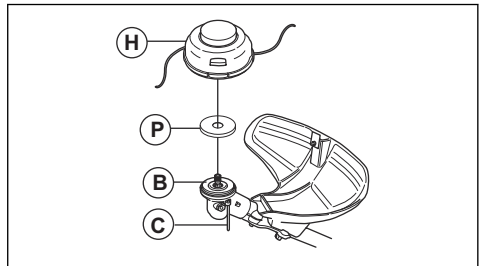
1. Hang the trimmer guard/combination guard (A) onto the two hooks on the plate holder (M).
2. Bend the guard around the shaft and attach it with the bolt (L) on the opposite side of the shaft.

3. Put the locking pin (C) in the groove on the bolt head and tighten the bolt fully.



### To attach a trimmer head or plastic blade

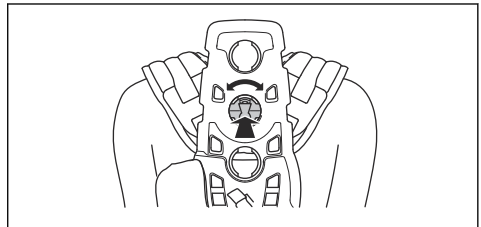
1. Put the drive disc (B) on the output shaft.
2. Align the metal cup (P) with the center of the blade guide on the drive disc.
3. Turn the output shaft to align one of the holes in the drive disc with the related hole in the gear housing.
4. Put the locking pin (C) in the hole to lock the shaft.
5. Turn the trimmer head/plastic blades (H) counterclockwise to attach.



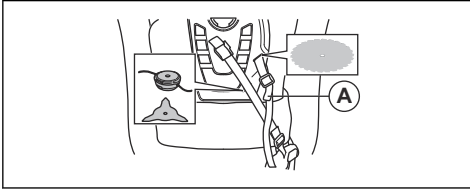
### To adjust the Balance XT harness

Refer to *Product overview on page 3* for an overview of the harness.

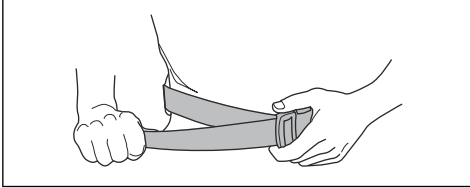
1. Stop the engine.
2. Push the safety-release mechanism down to release the product from the harness.
3. To adjust the harness to the operator's height:
  - a) Push the spring loaded lock.
  - b) Turn the shoulder strap harness.
  - c) Move the shoulder strap harness to an applicable hole on the back plate.



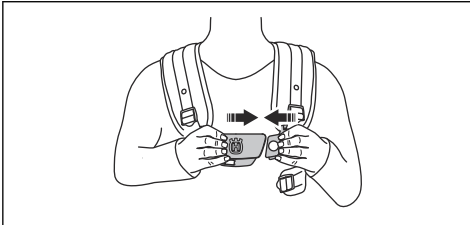
4. Attach the strap (A) in correct position for grass clearing or forestry clearing.



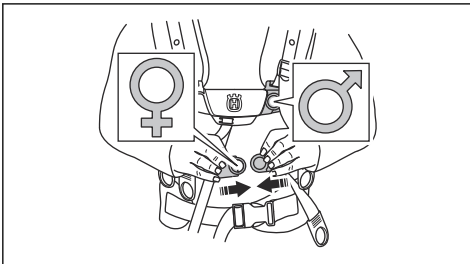
5. Tighten the hip strap tightly. Make sure that the hip strap aligns with the hip.



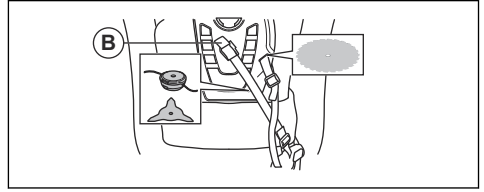
6. Push the 2 parts of the breastplate together as shown.



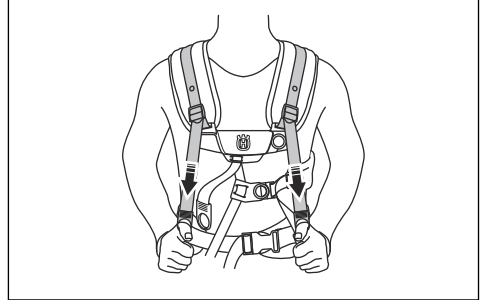
7. Attach the side belt to the breastplate.  
8. To decrease the pressure on the rib cage and shoulders, connect the side strap with the strap to the hip pad. Recommended for women.



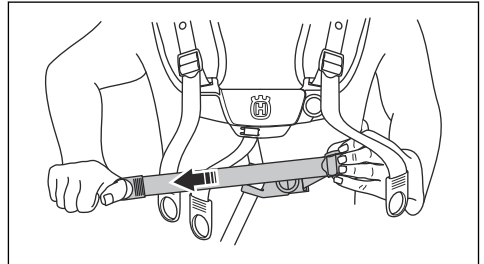
9. Tighten the elastic strap (B) to move more load from the shoulder strap to the hip strap.



10. Adjust the shoulder strap to make the product weigh equally on your shoulders.



11. Adjust the side straps around the rib cage until the breastplate is aligned with the center of your chest.



12. Adjust the height of the suspension point. Refer to *Correct balance of the product* on page 17. For forestry clearing, the correct height of the suspension is approximately 10 cm/4 in below your hip.

## Operation

### Introduction

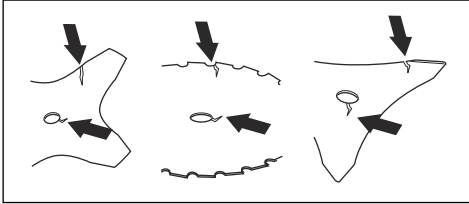


**WARNING:** Before you operate the product, you must read and understand the safety chapter.

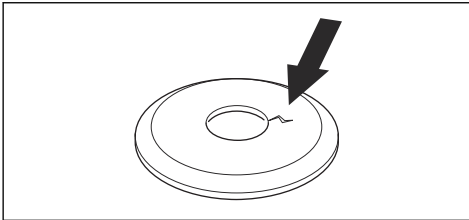
### To do before you operate the product

- Examine the work area. Make sure that you know the type of terrain, and the slope of the ground. Examine if there are obstacles such as stones, branches and ditches.
- Do an overhaul of the product.

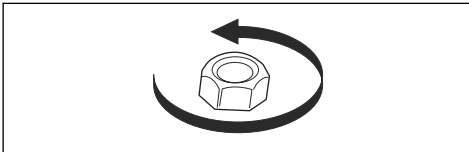
- Do the safety inspections, maintenance and servicing that are given in this manual.
- Make sure that all covers, guards, handles and the cutting equipment are correctly attached and not damaged.
- Make sure that there are no cracks at the bottom of the saw blade or grass blade teeth or by the center hole of the blade. Replace the blade if it is damaged.



- Examine the support flange for cracks. Replace the support flange if it is damaged.



- Make sure that the locknut cannot be removed by hand. If you can remove it by hand, it does not lock the cutting attachment sufficiently and you must replace it.



- Examine the cutting attachment guard and cutting attachment for damages or cracks. Replace the blade guard if it has been hit or if it has cracks.

## Fuel

This product has a two-stroke engine.



**CAUTION:** Incorrect type of fuel can result in engine damage. Use a mixture of gasoline and two-stroke oil.

## Premixed fuel

- Use Husqvarna premixed alkylate fuel for best performance and extension of the engine life. This fuel contains less harmful chemicals compared to regular fuel, which decreases harmful exhaust fumes. The quantity of remains after combustion is lower with this fuel, which keeps the components of the engine more clean.

## To mix fuel

### Gasoline

- Use good quality unleaded gasoline with a maximum of 10% ethanol contents.



**CAUTION:** Do not use gasoline with an octane grade less than 90 RON/87 AKI. Use of a lower octane grade can cause engine knocking, which causes engine damages.

### Two-stroke oil

- For best results and performance use Husqvarna two-stroke oil.
- If Husqvarna two-stroke oil is not available, use a two-stroke oil of good quality for air-cooled engines. Speak to your servicing dealer to select the correct oil.



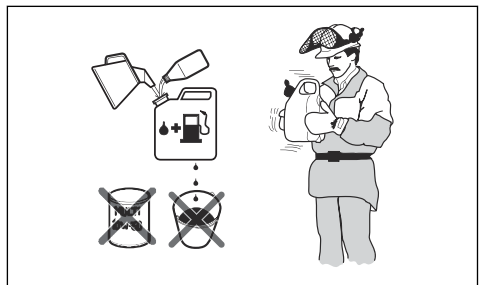
**CAUTION:** Do not use two-stroke oil for water-cooled outboard engines, also referred to as outboard oil. Do not use oil for four-stroke engines.

## To mix gasoline and two-stroke oil

Gasoline, liter	Two-stroke oil, liter
	<b>2% (50:1)</b>
5	0.10
10	0.20
15	0.30
20	0.40



**CAUTION:** Small errors can influence the ratio of the mixture drastically when you mix small quantities of fuel. Measure the quantity of oil carefully and make sure that you get the correct mixture.





1. Fill half the quantity of gasoline in a clean container for fuel.
2. Add the full quantity of oil.
3. Shake the fuel mixture.
4. Add the remaining quantity of gasoline to the container.
5. Carefully shake the fuel mixture.



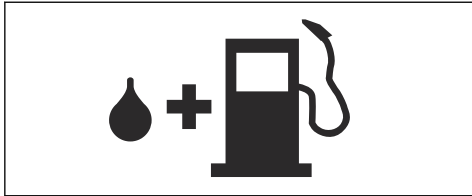
**CAUTION:** Do not mix fuel for more than 1 month at a time.

#### To fill the fuel tank



**WARNING:** Obey the procedure that follows for your safety.

1. Stop the engine and let the engine become cool.
2. Clean the area around the fuel tank cap.



3. Shake the container and make sure that the fuel is fully mixed.
4. Remove the fuel tank cap slowly to release the pressure.
5. Fill the fuel tank.



**CAUTION:** Make sure that there is not too much fuel in the fuel tank. The fuel expands when it becomes hot.

6. Tighten the fuel tank cap carefully.
7. Clean fuel spillage on and around the product.
8. Move the product 3 m/10 ft or more away from the refueling area and fuel source before you start the engine.

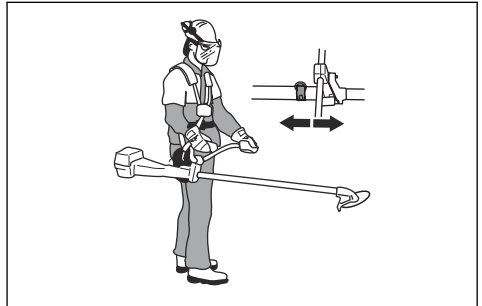
**Note:** To see where the fuel tank is on your product, refer to *Introduction on page 2*.

#### Work position

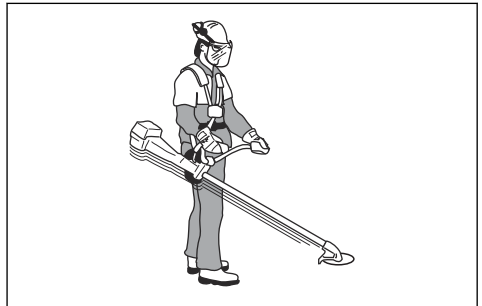
- Hold the product with 2 hands.
- Hold the product on the right side of your body.
- Keep the cutting attachment below waist level.
- Always keep the product attached to the harness.
- Keep body parts away from the hot surfaces.
- Keep body parts away from the cutting attachment.

#### Correct balance of the product

For forestry clearing, the product is correctly balanced when it freely hangs horizontally from the suspension point. With correct balance, the risk of hitting stones if you release the handlebar is decreased.

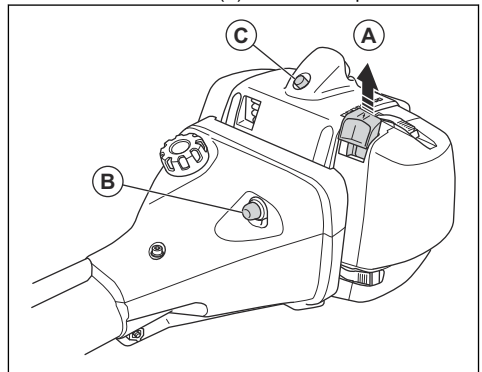


For grass clearing, the product is correctly balanced when the blade is at cutting height near the ground.



#### To start a cold engine

1. Set the stop switch to the start position.
2. Set the choke control (A) to the choke position.



3. Push the air purge bulb (B) approximately 6 times until fuel starts to fill the bulb. It is not necessary to fill the air purge bulb fully.

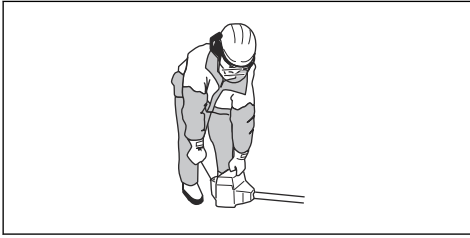
4. Push the decompression valve (C).

---

**Note:** The decompression valve moves to the initial position when the product starts.

---

5. Hold the body of the product on the ground with your left hand.



**CAUTION:** Do not put your feet on the product.

---

6. Pull the starter rope handle slowly until you feel some resistance. When you feel resistance, pull the starter rope handle quickly and with force.

---

**Note:** Do not wind the starter rope around your hand.

---

7. Continue to pull the starter rope until the engine starts.



**CAUTION:** Do not pull the starter rope to full extension and do not let go of the starter rope handle. Release the starter rope slowly. If you do not obey these instructions, the engine can become damaged.

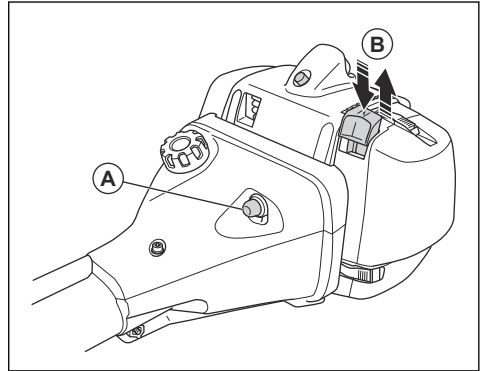
---

8. Set the choke control to the operation position and apply full throttle.

## To start a warm engine

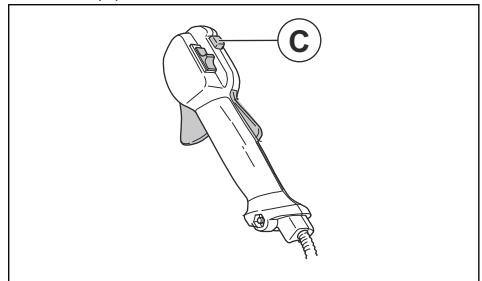
1. Set the stop switch to the start position.

2. Push the air purge bulb (A) approximately 6 times until fuel starts to fill the bulb. It is not necessary to fill the air purge bulb fully.

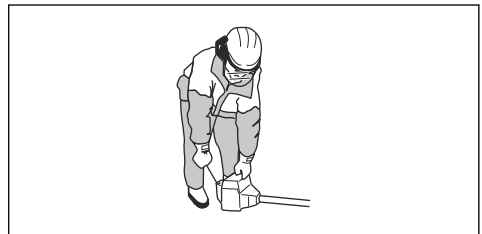


3. Pull the choke control (B) up and down to set start throttle.

4. For 555RXT, 555FRM: To engage the throttle function, push and release the throttle trigger lockout, the throttle trigger and the start throttle button (C).



5. Hold the body of the product on the ground with your left hand.



**CAUTION:** Do not put your feet on the product.

---

6. Pull the starter rope handle slowly until you feel some resistance. When you feel resistance, pull the starter rope handle quickly and with force.

**Note:** Do not wind the starter rope around your hand.

- Continue to pull the starter rope handle until the engine starts.

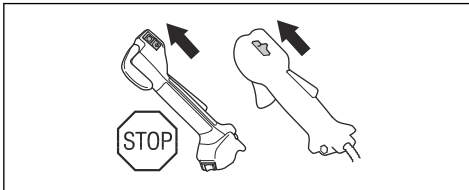


**CAUTION:** Do not pull the starter rope to full extension and do not let go of the starter rope handle. Release the starter rope slowly. If you do not obey these instructions, the engine can become damaged.

- Set the choke control to the operation position and apply full throttle.

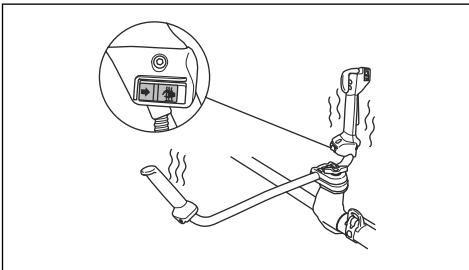
## To stop the engine

- Move the stop switch to the stop position.



## Heated handles (555FXT)

This product has heating elements in the handles. The switch for the heated handles is on the throttle handle. The heating elements automatically keep a temperature of 70° when the heat is on.

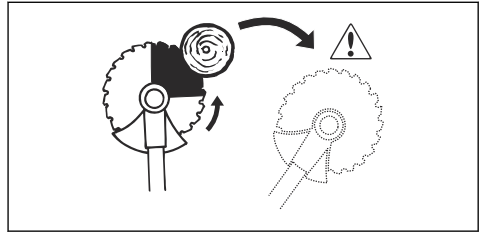


## Blade thrust

A blade thrust is when the product moves to the side quickly and with force. A blade thrust occurs when the grass blade or saw blade hits or catches on an object that cannot be cut. A blade thrust can eject the product or operator in all directions. There is a risk of injury to the operator and bystanders.

The risk increases in areas where it is not easy to see the material that is cut.

Do not cut with the area of the blade that is shown in black. The speed and movement of the blade can cause blade thrust. The risk increases with the thickness of the branch that is cut.

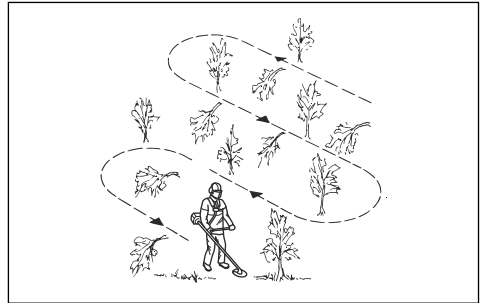


## General work instructions

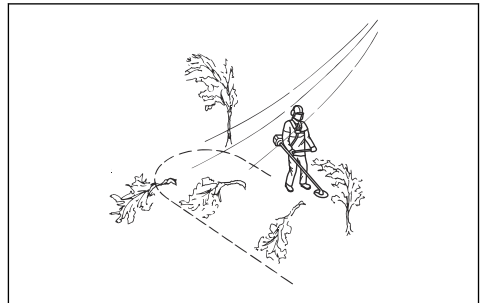


**WARNING:** Be careful when you cut a tree that is in tension. It can spring back to its normal position before or after the cut and hit you or the product, and cause injury.

- Clear an open space at one end of the work area, and start the work from there.
- Move in a regular pattern across the work area.



- Move the product fully to the left and right, to clear a width of 4–5 m on each turn.
- Clear a length of 75 m before you turn and go back. Move the fuel can along with you as you continue.
- Move in a direction where you do not go across ditches and obstacles more than necessary.
- Move in a direction where the wind makes the cut vegetation fall in the cleared area.



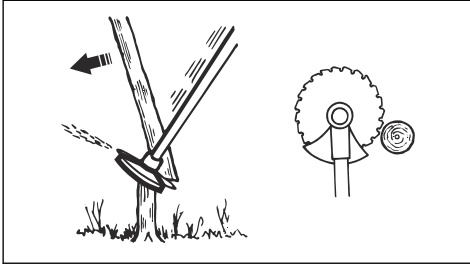
- Move along slopes, not up and down.

## Forestry clearing with a saw blade

### To fell a tree to the left

To fell to the left, push the bottom of the tree to the right.

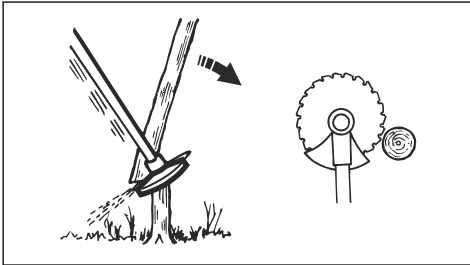
1. Apply full throttle.
2. Put the saw blade against the tree as given in the picture.
3. Tilt the saw blade and push it with force diagonally down to the right. At the same time, push the tree with the blade guard.



### To fell a tree to the right

To fell to the right, push the bottom of the tree to the left.

1. Apply full throttle.
2. Put the saw blade against the tree as given in the picture.
3. Tilt the saw blade and push it with force diagonally up and to the right. At the same time, push the tree with the blade guard.

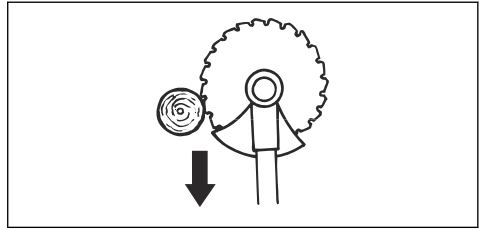


### To fell a tree forward

To fell forward, push the bottom of the tree rearward.

1. Apply full throttle.
2. Put the saw blade against the tree as given in the picture.

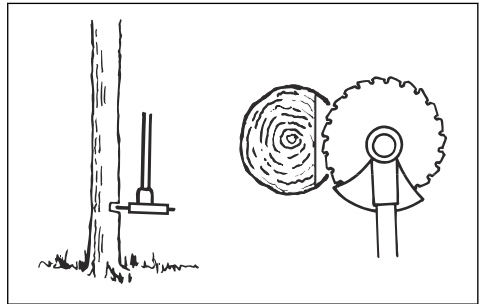
3. Pull the saw blade forward with a fast movement.



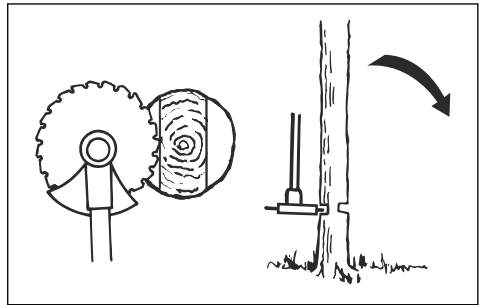
### To fell large trees

Large trees must be cut from 2 sides.

1. Examine in which direction the tree will fall.
2. Apply full throttle.
3. Do the first cut on the side of the tree to which it will fall.



4. Cut through the tree from the other side.



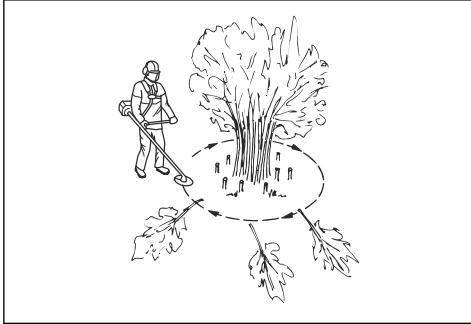
**CAUTION:** If the saw blade becomes blocked, do not pull the product with a sudden movement. That can cause damage to the saw blade, bevel gear, shaft or handlebar. Release the handles, hold the shaft with 2 hands and carefully pull the product.

**Note:** Use more cutting pressure to fell small trees.  
Use less cutting pressure to fell large trees.

## Brush cutting with a saw blade

To fell to the left, push the bottom of the tree to the right.

- Cut down thin trees and brush.
- Move the product from side to side.
- Cut many trees in one movement.
- For groups of thin trees:



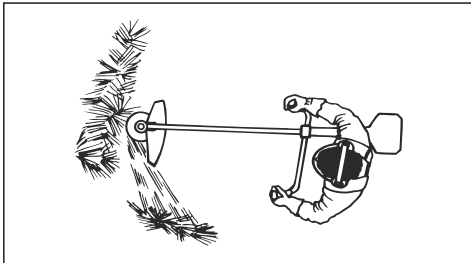
- a) Cut the outer trees high up.
- b) Cut the outer trees to the correct height.
- c) Cut from the center. If you cannot get access to the center, cut the outer trees high up and let them fall. This decreases the risk that the saw blade becomes blocked.

## Grass clearing with a grass blade



**CAUTION:** Do not use grass blades and grass knives on wood. Use grass blades and grass knives for long or heavy grass only.

- Move the product from side to side.
- Start the movement from right to left when you cut. Move the product to the right before you cut again.
- Cut with the left side of the grass blade.



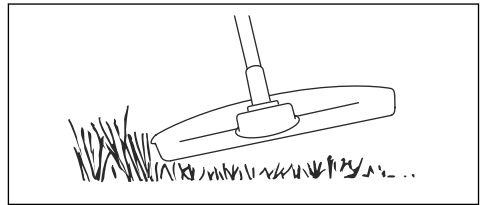
- Angle the grass blade to the left to make the grass fall in a line. This makes it easy to collect the grass.
- Keep a stable position with your feet apart.
- Move forward after each right movement and make sure that you have a stable position again before you cut again.

- Keep the support cup with a light pressure against the ground to make sure that the grass blade does not hit the ground.
- Obey these instructions to decrease the risk that cut material winds around the grass blade:
  - a) Apply full throttle.
  - b) Do not move the grass blade through cut material when you move the product from left to right.
- Before you collect the cut material, stop the engine and remove the product from the harness. Put the product down on the ground.

## Grass trimming with a trimmer head

### To trim the grass

1. Hold the trimmer head immediately above the ground at an angle. Do not push the trimmer line into the grass.



2. Decrease the length of the trimmer line by 10-12 cm / 4-4.75 in.
3. Decrease the engine speed to decrease the risk of damage to plants.
4. Use 80 % throttle when you cut grass near objects.



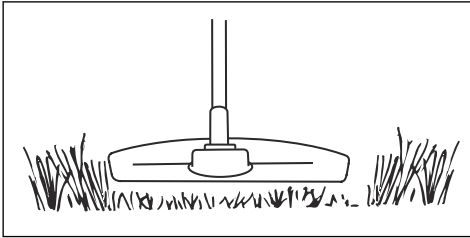
### To clear grass with a grass blade

1. Grass blades and grass cutters must not be used on woody stems.
2. A grass blade is used for all types of tall or coarse grass.
3. The grass is cut down with a sideways, swinging movement, where the movement from right-to-left is the clearing stroke and the movement from left-to-right is the return stroke. Let the left-hand side of the blade (between 8 and 12 o'clock) do the cutting.
4. If the blade is angled to the left when clearing grass, the grass will collect in a line, which makes it easier to collect, e.g. by raking.

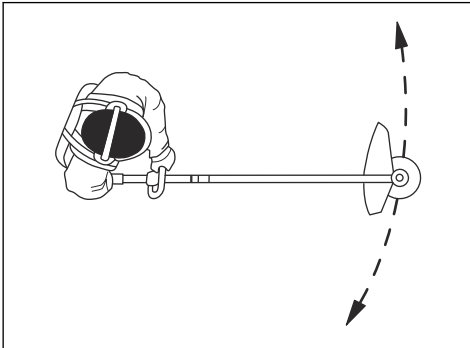
5. Try to work rhythmically. Stand firmly with your feet apart. Move forward after the return stoke and stand firmly again.
6. Let the support cup rest lightly against the ground. It is used to protect the blade from hitting the ground.
7. Reduce the risk of material wrapping around the blade by always work at full throttle and avoid the previously cut material during the return stoke.
8. Stop the engine, unclip the harness and place the machine on the ground before you start to collect the cut material.

### To cut the grass

1. Make sure that the trimmer line is parallel to the ground when you cut the grass.



2. Do not push the trimmer head to the ground. This can cause damage to the product.
3. Move the product from side to side when you cut grass. Use full speed.



### To sweep the grass

The airflow from the rotating trimmer line can be used to remove cut grass from an area.

1. Hold the trimmer head and the trimmer line parallel to the ground and above the ground.
2. Apply full throttle.
3. Move the trimmer head from side to side and sweep the grass.



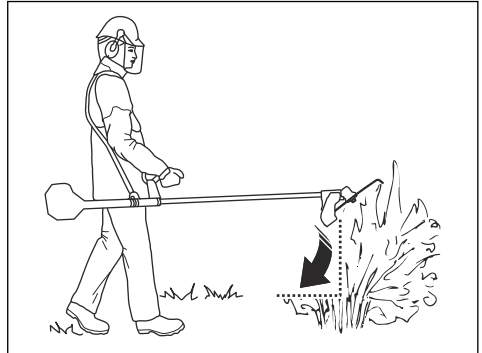
**WARNING:** Clean the trimmer head cover each time you assemble new trimmer line to prevent unbalance and vibrations in the handles. Also do a check of the other parts of the trimmer head and clean it if necessary.

### Shredding with a shredder blade



**CAUTION:** Do not use a shredder blade for vegetation with a stem diameter larger than 2 cm.

- Move the shredder blade up and down the vegetation to cut it into smaller pieces.



## Maintenance

### Introduction



**WARNING:** Before you do maintenance, you must read and understand the safety chapter.

For all servicing and repair work on the product, special training is necessary. We guarantee the availability of professional repairs and servicing. If your dealer is not a service agent, speak to them for information about the nearest service agent.

For more detailed information, refer to .

## Maintenance schedule

Maintenance	Daily	Weekly	Monthly
Clean the external surface.	X		
Examine the harness for damages.	X		
Examine the quick-release mechanism on the harness for damages and make sure that it operates correctly.	X		
Do a check of the throttle trigger lockout and the throttle trigger. Refer to <i>To do a check of the throttle trigger lockout on page 7.</i>	X		
Make sure that the cutting attachment does not rotate at idle speed.	X		
Do a check of the stop switch. Refer to <i>To do a check of the stop switch on page 8.</i>	X		
Examine the cutting attachment guard for damages and cracks.	X		
Make sure that the saw blade or grass blade is attached correctly. Make sure that the saw blade or grass blade is sharp and not damaged.	X		
Examine the support flange for damages and cracks. Replace it if it is damaged.	X		
Examine the trimmer head for damages and cracks. Replace it if it is damaged.	X		
Examine the handle and the handlebar for damages and make sure that they are attached correctly.	X		
Tighten the locknut fully for cutting attachments with a locknut.	X		
Examine the transport guard for damage and make sure that it can be attached correctly.	X		
Examine the engine, the fuel tank and the fuel lines for leaks.	X		
Clean the air filter. Replace it if it is damaged.	X		
Tighten nuts and screws.	X		
Examine the starter and the starter rope for damages.		X	
Examine the vibration damping units for damages and cracks. <sup>1</sup>		X	
Examine the spark plug. Refer to <i>To examine the spark plug on page 29.</i>		X	
Clean the cooling system.		X	
Clean or replace the spark arrester screen.		X	
Clean the external surface of the carburetor and the area around it.		X	
Make sure that the bevel gear is filled to $\frac{3}{4}$ with grease.		X	
Examine the fuel filter for contamination and the fuel hose for cracks and other defects. Replace if it is necessary.			X
Examine all cables and connections.			X
Examine the clutch, clutch springs and clutch drum for wear. Replace it if it is necessary.			X
Replace the spark plug.			X

<sup>1</sup> Replace the vibration damping unit after each season or at a minimum of one time each year.

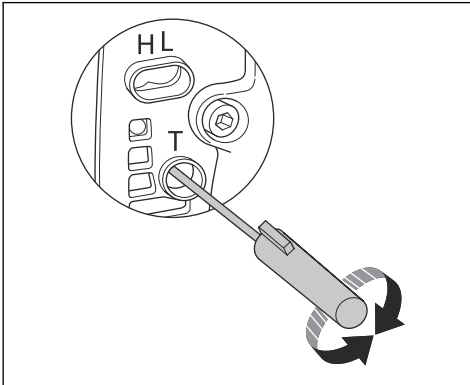
Maintenance	Daily	Weekly	Monthly
Clean or replace the spark arrester screen.			X
Lubricate the drive shaft. <sup>2</sup>			X

## Carburetor

### To adjust the idle speed

Your Husqvarna product is made to specifications that decrease harmful emissions.

1. Make sure that the air filter is clean and the air filter cover is attached before you adjust the idle speed.
2. Adjust the idle speed with the idle speed screw T which is identified with "T" mark.
  - a) Turn the idle speed screw T clockwise until the cutting attachment starts to rotate.



- b) Turn the idle speed screw T counterclockwise until the cutting attachment stops.



**WARNING:** If the cutting attachment does not stop when you adjust the idle speed, speak to your servicing dealer. Do not use the product until it is correctly adjusted or repaired.

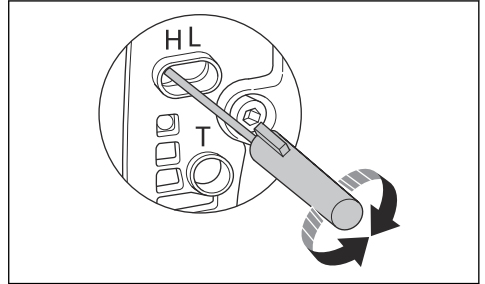
3. The idle speed is correct when the engine operates smoothly in all positions. The idle speed must be below the speed when the cutting attachment starts to rotate.

**Note:** Refer to *Technical data on page 31* for the recommended idle speed.

### To adjust the high speed needle and low speed needle

The high speed needle and low speed needle can be adjusted to adapt the fuel supply to local conditions.

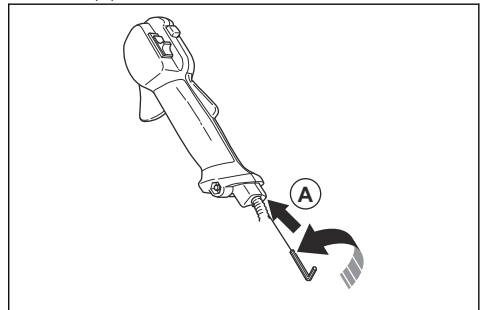
- Turn the high speed needle and low speed needle clockwise to decrease the fuel flow.



- Turn the high speed needle and low speed needle counterclockwise to increase the fuel flow.

### To adjust the start throttle speed (555RXT, 555FRM)

1. Apply idle speed to the product.
2. Push the start throttle lock. Refer to *Product overview on page 3*.
3. If the start throttle speed is less than 4000 rpm, turn the adjuster screw (A) clockwise. When the cutting attachment starts to rotate, turn the adjuster screw (A) 1/2 turn clockwise.



4. If the start throttle speed is more than 6500 rpm, turn the adjuster screw (A) counterclockwise. When the cutting attachment starts to rotate, turn the adjuster screw (A) 1/2 turn.

### To clean the muffler



**WARNING:** The muffler gets very hot during and after operation, also at idle speed. Risk of fire and burn injuries.

<sup>2</sup> At an interval of 3 months.

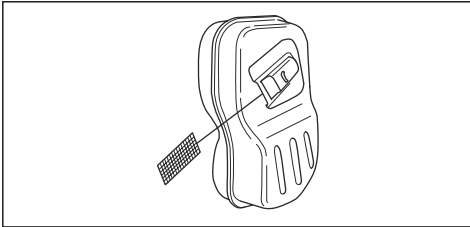




**WARNING:** A used muffler/spark arrester and spark arrester mounting face may contain deposits of combustion particles on the surfaces that may be carcinogenic. To avoid skin contact and inhalation of such particles when cleaning and/or servicing the spark arrester, make sure you always:

- wear gloves;
- clean and/or service in a well ventilated area;
- do not use pressurized air to clean the spark arrester screen;
- use a steel brush and brush away from your body when cleaning the spark arrester.

1. If the muffler on your product has a spark arrester screen, clean it weekly with a steel brush. Replace the spark arrester screen if it is damaged.



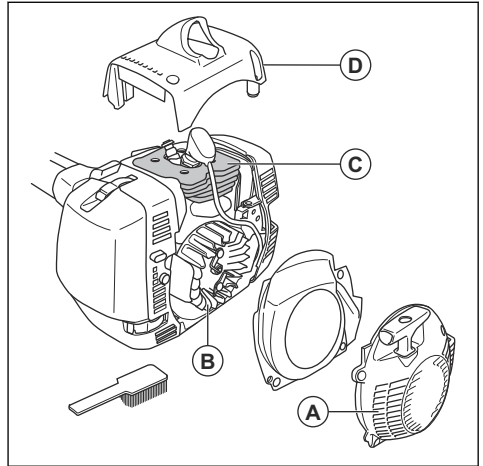
**CAUTION:** A blocked spark arrester screen causes the engine to become too hot and results in damage to the cylinder and piston.



**CAUTION:** If the spark arrester screen is frequently blocked, let your service agent examine the muffler.

## To clean the cooling system

The cooling system includes the air intake on the starter housing (A), the cooling fins on the flywheel (B), the cooling fins on the cylinder (C) and the cylinder cover (D).



Clean the cooling system weekly or more frequently if it is necessary.

1. Remove the starter housing and the cylinder cover.
2. Clean the cooling system with a brush.

## Air filter

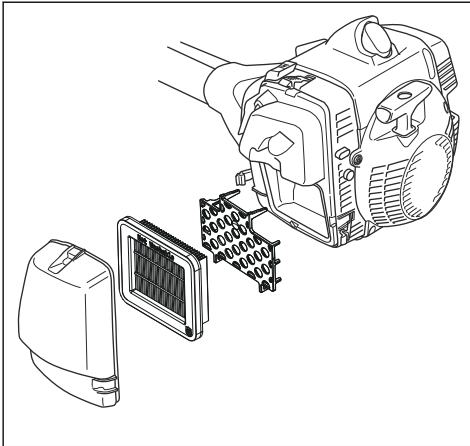
A dirty air filter can cause carburetor malfunction, start problems, loss of engine power and wear to engine parts. It also makes the engine use more fuel than necessary. Clean the filter at an interval of 8 hours, or more frequently if the product is operated in a dusty environment.

**Note:** An engine adjustment can be necessary when the air filter has been cleaned or replaced. See *Carburetor* on page 24.

## To examine the paper air filter

1. Remove the air filter cover.

2. Remove the paper air filter and the filter support.



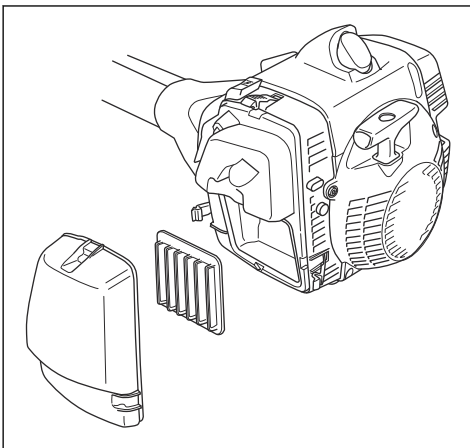
3. Examine and clean the air filter housing with a brush.
4. Examine the paper air filter. Replace the paper air filter if it is dirty or damaged.



**CAUTION:** Do not bend or fold the paper air filter as this can cause damage to the paper air filter. Replace a damaged paper air filter.

### To clean the nylon air filter

1. Remove the air filter cover.



2. Remove the nylon air filter.
3. Examine and clean the air filter housing with a brush.
4. Examine the nylon air filter. Clean the nylon air filter with warm soap water.



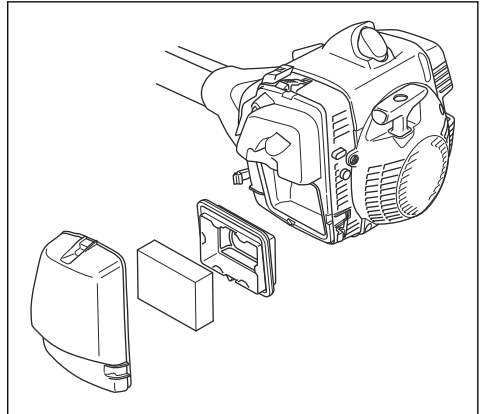
**CAUTION:** Replace the nylon air filter if it is damaged or cannot be fully cleaned.



**CAUTION:** Make sure that the nylon air filter is dry before you assemble it.

### To clean the foam air filter

1. Remove the air filter cover.



2. Remove the foam air filter.
3. Examine and clean the air filter housing with a brush.
4. Examine the foam air filter. Clean the foam air filter with warm soap water.



**CAUTION:** Replace a foam air filter that is damaged or cannot be fully cleaned.



**CAUTION:** Make sure that the foam air filter is dry before you assemble it.

5. Apply oil to the foam air filter. Refer to *To apply oil to the foam air filter* on page 26.

### To apply oil to the foam air filter



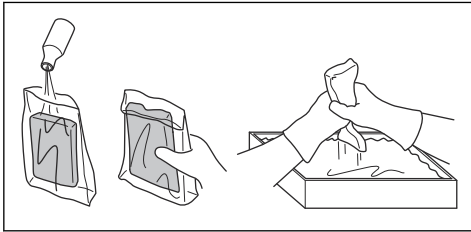
**CAUTION:** Always use Husqvarna special air filter oil. Do not use other types of oil.



**WARNING:** Put on protective gloves. The air filter oil can cause skin irritation.

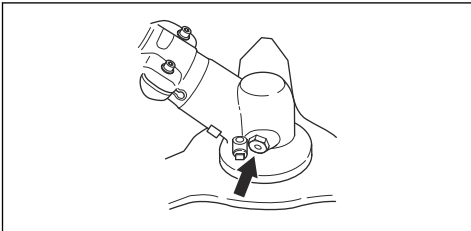
1. Put the foam air filter in a plastic bag.
2. Put the oil in the plastic bag.

3. Rub the plastic bag to supply the oil equally across the foam air filter.
4. Push the unwanted oil out of the foam air filter while in the plastic bag.



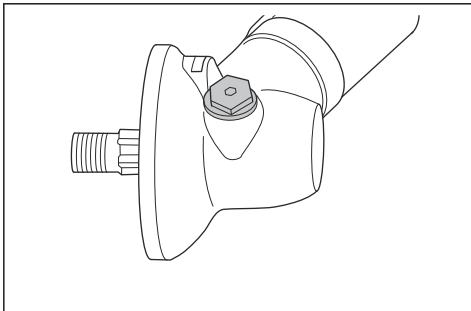
## Bevel gear

The bevel gear is filled to  $\frac{3}{4}$  with grease at the factory. Before use, make sure that the grease level has not changed. Use Husqvarna special grease if it is necessary to fill up. Do not change the grease in the bevel gear. Let servicing personnel do the repair of the bevel gear.

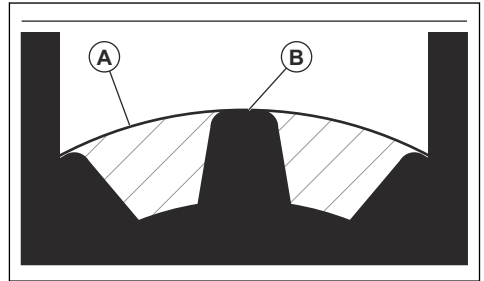


## To lubricate the bevel gear

1. Remove the cutting equipment.
2. Put the product with the grease plug at its highest position.
3. Remove the grease plug.



4. Look into the grease plug hole and turn the drive shaft. The grease level (A) must be in level with the top of the gear cogs (B).



5. If the grease level is too low fill the bevel gear with Husqvarna bevel gear grease. Fill slowly and turn the drive shaft as you apply the bevel gear grease, stop at the correct level (B).



**CAUTION:** An incorrect quantity of grease can cause damage to the bevel gear.

6. Install the grease plug.

## Drive shaft

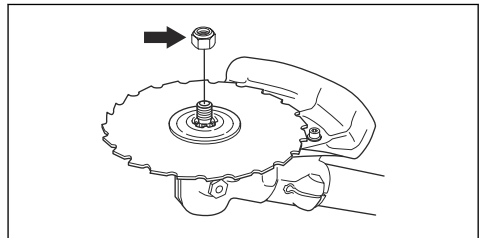
Lubricate the drive shaft at an interval of 3 months. Let a service agent help you if you are not sure about the procedure.

## To attach and remove the locknut

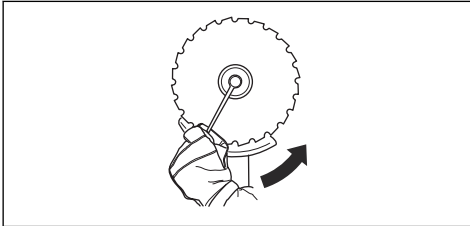
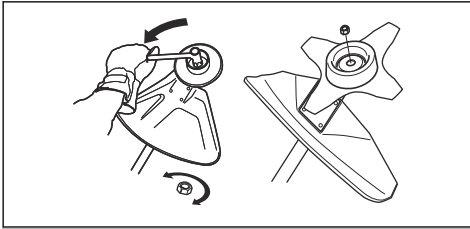


**WARNING:** Stop the engine, use protective gloves and be careful around the sharp edges of the cutting attachment.

Use the locknut to attach some types of cutting attachments. The locknut has a left thread.



- Use a socket wrench with a shaft that is sufficiently long to let you keep your hand behind the cutting attachment guard. The arrow in the illustration shows the area where you can safely operate the socket wrench.



- To attach, tighten the locknut in the opposite direction to how the cutting attachment rotates.
- To remove the locknut, turn it in the same direction as how the cutting attachment rotates.
- Keep count when you remove and attach the locknut. Replace the locknut after approximately 10 times.

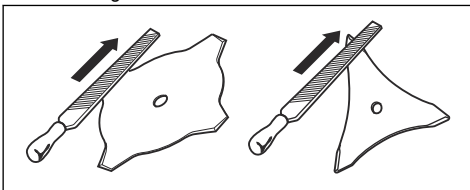
**Note:** Make sure that you can not turn the locknut by hand. Replace the locknut if the nylon lining does not have a resistance of a minimum of 1.5 Nm.

## To sharpen the grass knife and grass blade



**WARNING:** Stop the engine. Use protective gloves.

- To sharpen the grass knife or grass blade correctly, refer to the instructions that come with the cutting attachment.
- Sharpen all edges equally to keep the balance.
- Use a single-cut flat file.



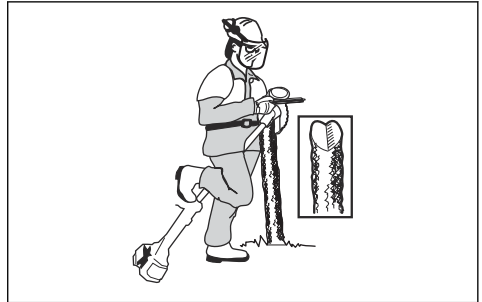
**WARNING:** Always discard a blade that is damaged. Do not try to make a bent or twisted blade straight and use it again.

## To sharpen the saw blade

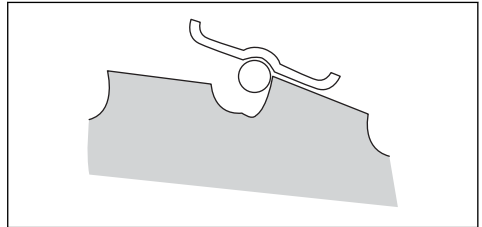


**WARNING:** Stop the engine. Use protective gloves.

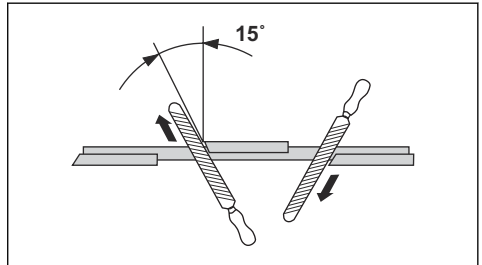
- To sharpen the blade correctly, refer to the instructions that come with the blade.
- Make sure that the product and blade has sufficient support when you sharpen it.



- Use a 5.5 mm round file with a file holder.

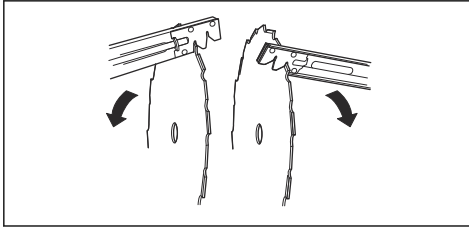


- Hold the file at an angle of 15°.
- Sharpen one tooth of the saw blade to the right and the next tooth to the left, see the illustration.



**Note:** Sharpen the edges of the teeth with a flat file if the blade is heavily worn. Continue to sharpen with a round file.

- Sharpen all edges equally to keep the blade balanced.
- Adjust the blade set to 1 mm with the recommended setting tool. Refer to the instructions that come with the blade.



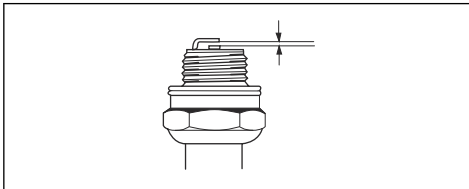
**WARNING:** Always discard a blade that is damaged. Do not try to make a bent or twisted blade straight and use it again.

## To examine the spark plug



**CAUTION:** Always use the recommended spark plug type. Incorrect spark plug type can cause damage to the product.

- Examine the spark plug if the engine is low on power, is not easy to start or does not operate correctly at idle speed.
- To decrease the risk of unwanted material on the spark plug electrodes, obey these instructions:
  - a) Make sure that the idle speed is correctly adjusted.
  - b) Make sure that the fuel mixture is correct.
  - c) Make sure that the air filter is clean.
- If the spark plug is dirty, clean it and make sure that the electrode gap is correct, refer to *Technical data on page 31*.



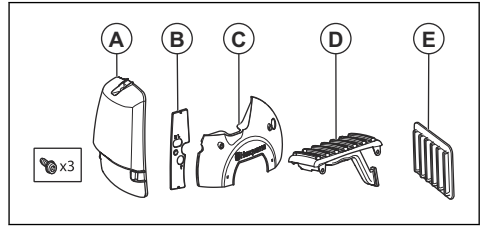
- Replace the spark plug if it is necessary.

## To adjust the product for cold environments

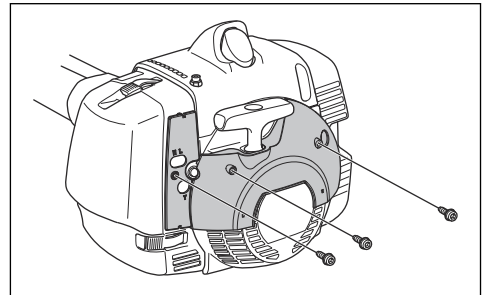


**CAUTION:** Snow and cold weather can cause operation problems. There is a risk of too low engine temperature or ice on the air filter and the carburetor.

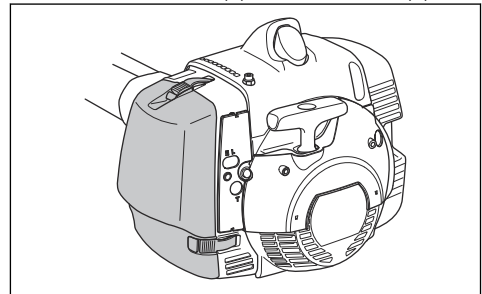
There is a winter kit available for your product. The winter kit includes the components that follow:



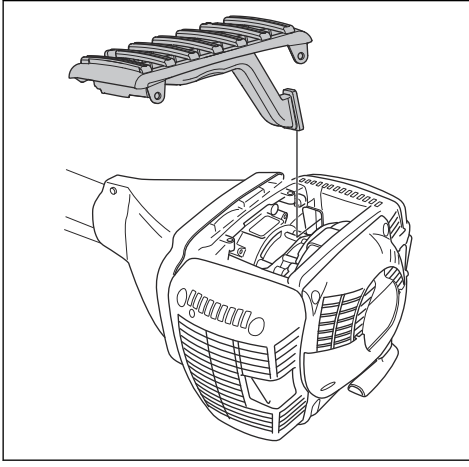
- An air filter cover without air intake (A).
- A cover for the air filter holder (B).
- A cover for the starter housing (C).
- A wear guard with an air duct (D).
- An air filter (E).
- In temperatures below 0°C/32°F, do the steps that follow.
  - a) Install the cover for the starter housing (C) and the cover for the air filter holder (B).



- b) Remove the air filter and the air filter cover. Install the air filter (E) and air filter cover (A).



- In temperatures below -5°C/23°F, install the wear guard with an air duct (D).



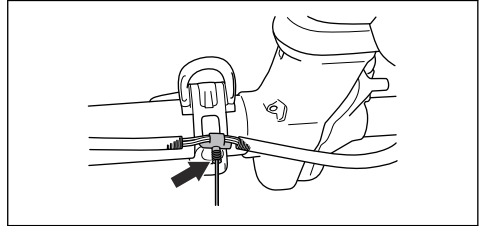
**CAUTION:** At temperatures of more than -5°C/23°F or 0°C/32°F, remove the

winter kit from the product. There is a risk of engine damages.

## To lubricate the wire (555FXT)

**Note:** The wire is lubricated at the factory. Lubricate the wire monthly.

1. Remove the protective cover.
2. Remove the cylinder cover to get access to the rubber bellows on the wire.
3. Remove the plug on the grease nipple.
4. Use antifreeze spray with a 2 mm spray tube. Spray in short intervals.



5. Examine the rubber bellows on the wire to make sure that it does not expand.
6. Attach the cylinder cover and the protective cover.

## Troubleshooting

### The engine does not start

Check	Possible cause	Procedure
Stop switch.	The stop switch is in the stop position.	Let an approved servicing dealer replace the stop switch.
Starter pawls.	The starter pawls cannot move freely.	Remove the starter cover and clean around the starter pawls. Refer to <i>To clean the cooling system on page 25.</i> Let an approved servicing dealer help you.
Fuel tank.	Incorrect fuel type.	Drain the fuel tank and fill with correct fuel.
Carburetor	Incorrect adjustment of the idle speed	Adjust the idle speed with the idle speed screw T.

Check	Possible cause	Procedure
Spark plug.	The spark plug is dirty or wet.	Make sure that the spark plug is dry and clean.
	The spark plug electrode gap is incorrect.	Clean the spark plug. Make sure that the electrode gap is correct. Make sure that the spark plug has a suppressor.  Refer to <i>Technical data on page 31</i> for correct electrode gap.
	The spark plug is loose.	Tighten the spark plug.
Fuel filter	The fuel filter is clogged.	Replace the fuel filter.

## The engine starts but stops again

Check	Possible cause	Procedure
Fuel tank	Incorrect fuel type.	Empty the fuel tank and fill it with correct fuel.
Fuel filter	The fuel filter is clogged.	Replace the fuel filter.
Carburetor	The idle speed is not correctly adjusted.	Adjust the idle speed with the idle speed screw T.
Air filter	The air filter is clogged.	Clean the air filter.

---

## Transportation and storage

---

- Let the product cool before transportation or storage.
- Remove the spark plug cap before long-term storage.
- Attach the product during transportation. Make sure that it cannot move.
- Make sure that there is no risk of fuel leaks, fuel fumes, sparks or flames during transportation and storage.
- Attach the transport guard during transportation and storage.
- Clean and do servicing on the product before long-term storage.

---

## Technical data

---

### Technical data

	555FX	555FXT	555RXT	555FRM
<b>Engine</b>				
Cylinder displacement, cm <sup>3</sup>	53.3	53.3	53.3	53.3
Idle speed, rpm	2800	2800	2800	2800

	555FX	555FXT	555RXT	555FRM
Speed of output shaft, rpm	10500	10500	10500	10500
Max. engine power, according to ISO 8893, kW/hp @ rpm	2.8/3.8 @ 9000	2.8/3.8 @ 9000	2.8/3.8 @ 9000	2.8/3.8 @ 9000
Catalytic converter muffler	No	No	No	No
<b>Ignition system</b>				
Spark plug	NGK BPMR 7A	NGK BPMR 7A	NGK BPMR 7A	NGK BPMR 7A
Electrode gap, mm	0.5	0.5	0.5	0.5
<b>Fuel</b>				
Fuel tank capacity, l/cm <sup>3</sup>	1.1/1100	1.1/1100	1.1/1100	1.1/1100
<b>Weight</b>				
Weight, kg	8.9	9.1	9.2	9.2
<b>Noise emissions</b> <sup>3</sup>				
Sound power level, measured dB (A)	116	116	119	119
Sound power level, guaranteed L <sub>WA</sub> dB (A)	117	117	121	121
<b>Sound levels</b> <sup>4</sup>				
Equivalent sound pressure level at the operator's ear, measured according to EN ISO 11806 and ISO 22868, dB(A):				
Equipped with trimmer head (original)	-	-	108	-
Equipped with grass blade (original)	-	-	101	-
Equipped with saw blade (original)	103	103	-	-
Equipped with shredder blade (original)	-	-	-	103
<b>Vibration levels</b> <sup>5</sup>				
Equivalent vibration levels (a <sub>hv,eq</sub> ) at handles, measured according to EN ISO 11806 and ISO 22867, m/s <sup>2</sup> :				
Equipped with trimmer head (original), left/right	-	-	1.7/2.0	-
Equipped with grass blade (original), left/right	-	-	1.5/1.6	-
Equipped with saw blade (original), left/right	2.1/2.3	2.1/2.3	-	-
Equipped with shredder blade (original)	-	-	-	2.0/1.5

<sup>3</sup> Noise emissions in the environment measured as sound power (L<sub>WA</sub>) in conformity with EC directive 2000/14/EC. Reported sound power level for the machine has been measured with the original cutting attachment that gives the highest level. The difference between guaranteed and measured sound power is that the guaranteed sound power also includes dispersion in the measurement result and the variations between different machines of the same model according to Directive 2000/14/EC.

<sup>4</sup> Reported data for equivalent sound pressure level for the machine has a typical statistical dispersion (standard deviation) of 1 dB(A).

<sup>5</sup> Reported data for equivalent vibration level has a typical statistical dispersion (standard deviation) of 1 m/s<sup>2</sup>.



## Accessories

<b>555FX, 555FXT</b>		
<b>Approved accessories</b>	<b>Accessory type</b>	<b>Cutting attachment guard, art. no.</b>
Center hole in blades/knives, Ø 25.4 mm	Output shaft thread M12	
Grass blade/grass knife	Multi 275-4 (Ø 275, 4 teeth)	502 46 49-01
	Multi 300-3 (Ø 300 3 teeth)	502 46 49-01
	Multi 350-3 (Ø 350, 3 teeth)	502 46 49-01
Saw blade	Maxi 225-24 (Ø 225, 24 teeth)	544 01 65-01
	Scarlet 200-22 (Ø 200, 22 teeth)	537 21 71-01
	Scarlet 225-24 (Ø 225, 24 teeth)	544 01 65-01
Trimmer head	Trimmy S II (Ø 2.4–3.3 mm cord)	502 46 50-01
	Auto 55 (Ø 2.7–3.3 mm cord)	502 46 50-01
	T45x (Ø 2.7–3.3 mm cord)	502 46 50-01
	T55x (Ø 2.7–3.3 mm cord)	502 46 50-01
	F55 (Ø 2.7–3.5 mm cord)	502 46 50-01
Support cup	Fixed	

<b>555RXT</b>		
<b>Approved accessories</b>	<b>Accessory type</b>	<b>Cutting attachment guard, art. no.</b>
Center hole in blades/knives, Ø 25.4 mm	Output shaft thread M12	
Grass blade/grass knife	Multi 275-4 (Ø 275, 4 teeth)	544 16 03-01
	Multi 300-3 (Ø 300 3 teeth)	544 16 03-01
	Multi 350-3 (Ø 350, 3 teeth)	544 16 03-01
Saw blade	Maxi 225-24 (Ø 225, 24 teeth)	544 01 65-01
	Scarlet 200-22 (Ø 200, 22 teeth)	537 21 71-01
	Scarlet 225-24 (Ø 225, 24 teeth)	544 01 65-01
Trimmer head	Trimmy S II (Ø 2.4–3.3 mm cord)	544 10 74-01
	Auto 55 (Ø 2.7–3.3 mm cord)	544 10 74-01
	T45x (Ø 2.7–3.3 mm cord)	544 10 74-01
	T55x (Ø 2.7–3.3 mm cord)	544 10 74-01
Support cup	Fixed	

<b>555RXT</b>		
<b>Approved accessories</b>	<b>Accessory type</b>	<b>Cutting attachment guard, art. no.</b>
Shredder blade	320-2T	544 02 65-02

<b>555FRM</b>		
<b>Approved accessories</b>	<b>Accessory type</b>	<b>Cutting attachment guard, art. no.</b>
Center hole in blades/knives, Ø 25.4 mm	Output shaft thread M12	
Grass blade/grass knife	Multi 275-4 (Ø 275, 4 teeth)	544 16 03-01
	Multi 300-3 (Ø 300 3 teeth)	544 16 03-01
	Multi 350-3 (Ø 350, 3 teeth)	544 16 03-01
Saw blade	Maxi 225-24 (Ø 225, 24 teeth)	544 01 65-01
	Scarlet 200-22 (Ø 200, 22 teeth)	537 21 71-01
	Scarlet 225-24 (Ø 225, 24 teeth)	544 01 65-01
Trimmer head	Trimmy S II (Ø 2.4–3.3 mm cord)	544 10 74-01
	Auto 55 (Ø 2.7–3.3 mm cord)	544 10 74-01
	T45x (Ø 2.7–3.3 mm cord)	544 10 74-01
	T55x (Ø 2.7–3.3 mm cord)	544 10 74-01
Shredder blade	320-2T	544 02 65-02
Support cup	Fixed	

---

# Declaration of Conformity

---

## EU Declaration of Conformity

We, **Husqvarna AB**, SE-561 82 Huskvarna, Sweden, tel: +46-36-146500, declare on our sole responsibility that the product:

<b>Description</b>	Brush cutter
<b>Brand</b>	Husqvarna
<b>Type / Model</b>	555FX, 555FXT, 555RXT, 555FRM
<b>Identification</b>	Serial numbers dating from 2022 and onwards

complies fully with the following EU directives and regulations:

<b>Regulation</b>	<b>Description</b>
2006/42/EC	"relating to machinery"
2014/30/EU	"relating to electromagnetic compatibility"
2000/14/EC	"relating to the noise emissions in the environment"
2011/65/EU	"on the restriction of the use of certain hazardous substances in electrical and electronic equipment"

and that the following standards and/or technical specifications are applied: EN ISO 12100:2010, EN ISO 14982:2009, EN IEC 63000:2018, EN ISO 11806-1:2011



SMP Svensk Maskinprovning AB, Box 4053, SE-904 03 Umeå, Sweden has performed a voluntary type examination according to annex IX of 2006/42/EC.

Certificate Number: SEC/09/2176 - 555FX, 555FXT, SEC/09/2175 - 555RXT, 555FRM

SMP Svensk Maskinprovning AB has also verified agreement with annex V of the council's directive 2000/14/EC.

For information relating to noise emissions, refer to *Technical data on page 31*.

Huskvarna, 2023-07-01

Two handwritten signatures in black ink. The first signature is 'Stefan Holmberg' and the second is a more stylized signature.

Stefan Holmberg, R&D Director, Technology Management, Husqvarna AB

Responsible for technical documentation

# UK Declaration of Conformity

We, **Husqvarna AB**, SE-561 82 Huskvarna, Sweden, tel: +46-36-146500, declare on our sole responsibility that the product:

<b>Description</b>	Brush cutter
<b>Brand</b>	Husqvarna
<b>Type / Model</b>	555FX, 555FXT, 555RXT, 555FRM
<b>Identification</b>	Serial numbers dating from 2022 and onwards

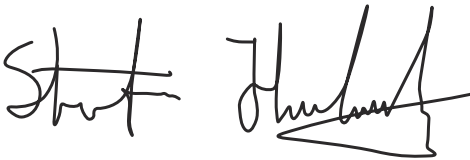
complies fully with the following UK regulations:

<b>Description</b>
The Supply of Machinery (Safety) Regulations 2008
Electromagnetic Compatibility Regulations 2016
The Noise Emission in the Environment by Equipment for use Outdoors Regulations 2001, Schedule 8
The Restriction of the Use of Certain Hazardous Substances in Electrical and Electronic Equipment Regulations 2012

and that the following standards and/or technical specifications are applied: EN ISO 12100:2010, EN ISO 14982:2009, EN IEC 63000:2018, EN ISO 11806-1:2011

For information relating to noise emissions, refer to *Technical data on page 31*.

Huskvarna, 2023-07-01



Stefan Holmberg, R&D Director, Technology Management, Husqvarna AB

Responsible for technical documentation

**UK  
CA**

UK Importer:  
Husqvarna UK Ltd  
Preston Road, Co. Durham  
DL5 6UP









[www.husqvarna.com](http://www.husqvarna.com)

Original instructions



1143380-26



2023-08-31