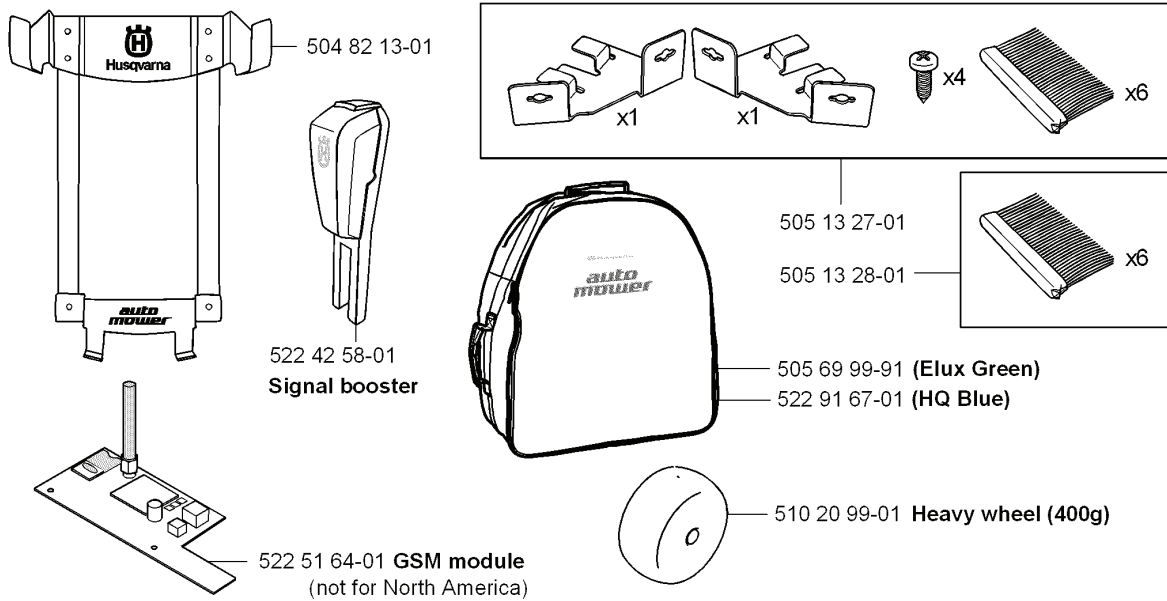
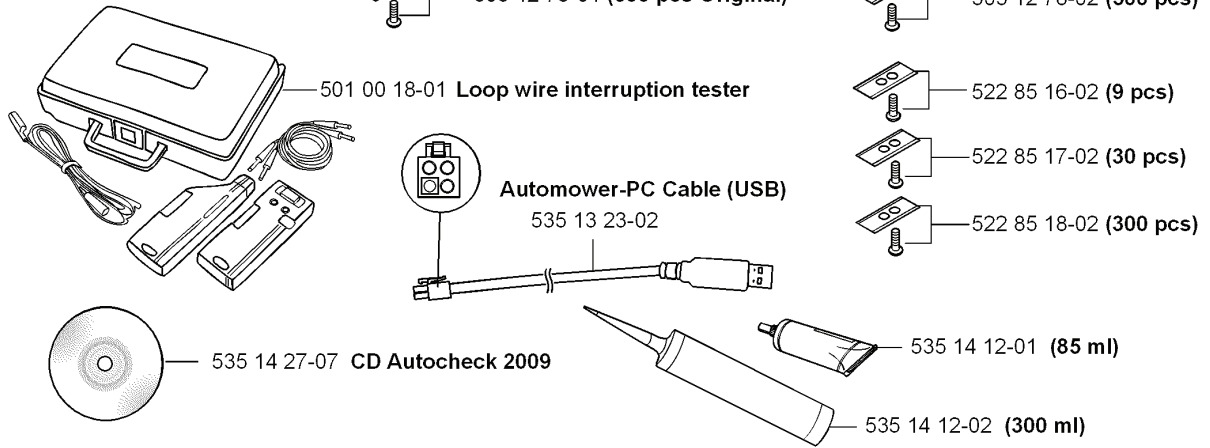


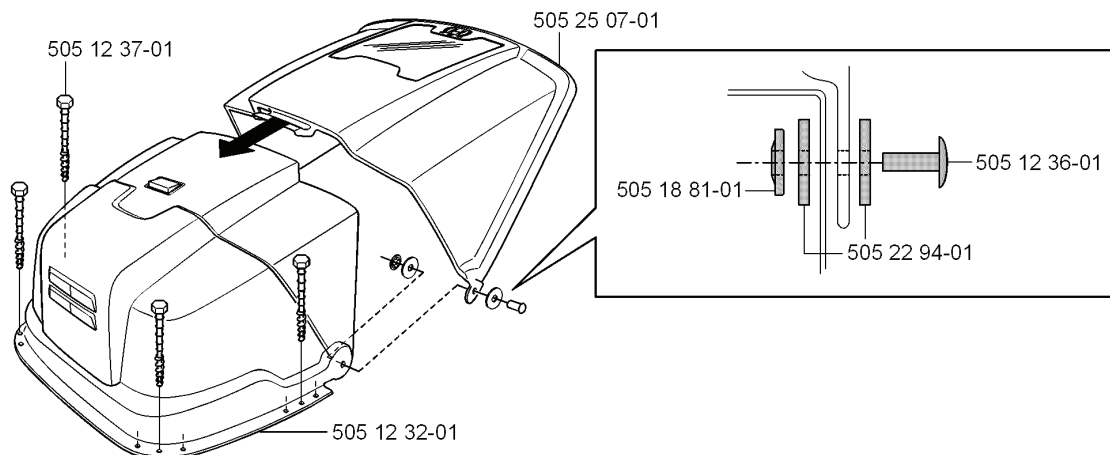
230 ACX, 2009-02

SPARE PARTS LIST

H Accessories
Zubehöre
Accessoires
Accesorios
Tillbehör

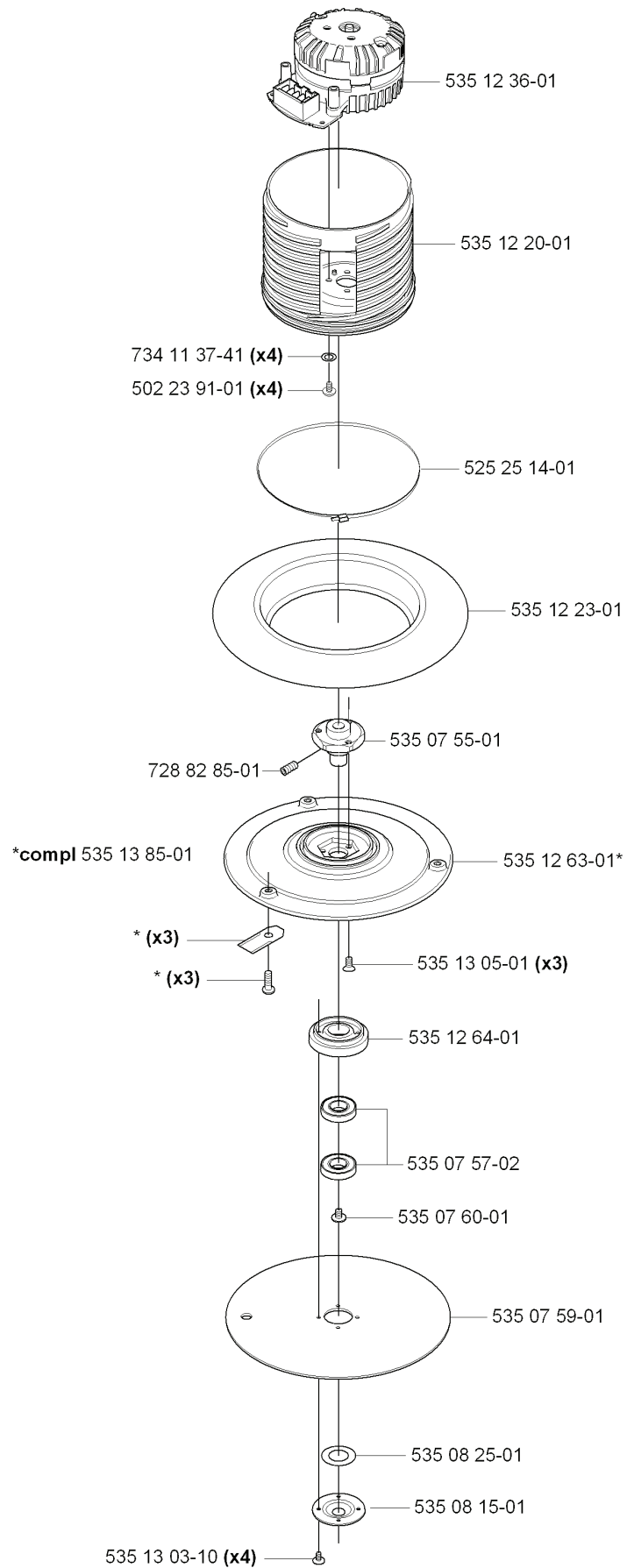


compl 504 82 14-01



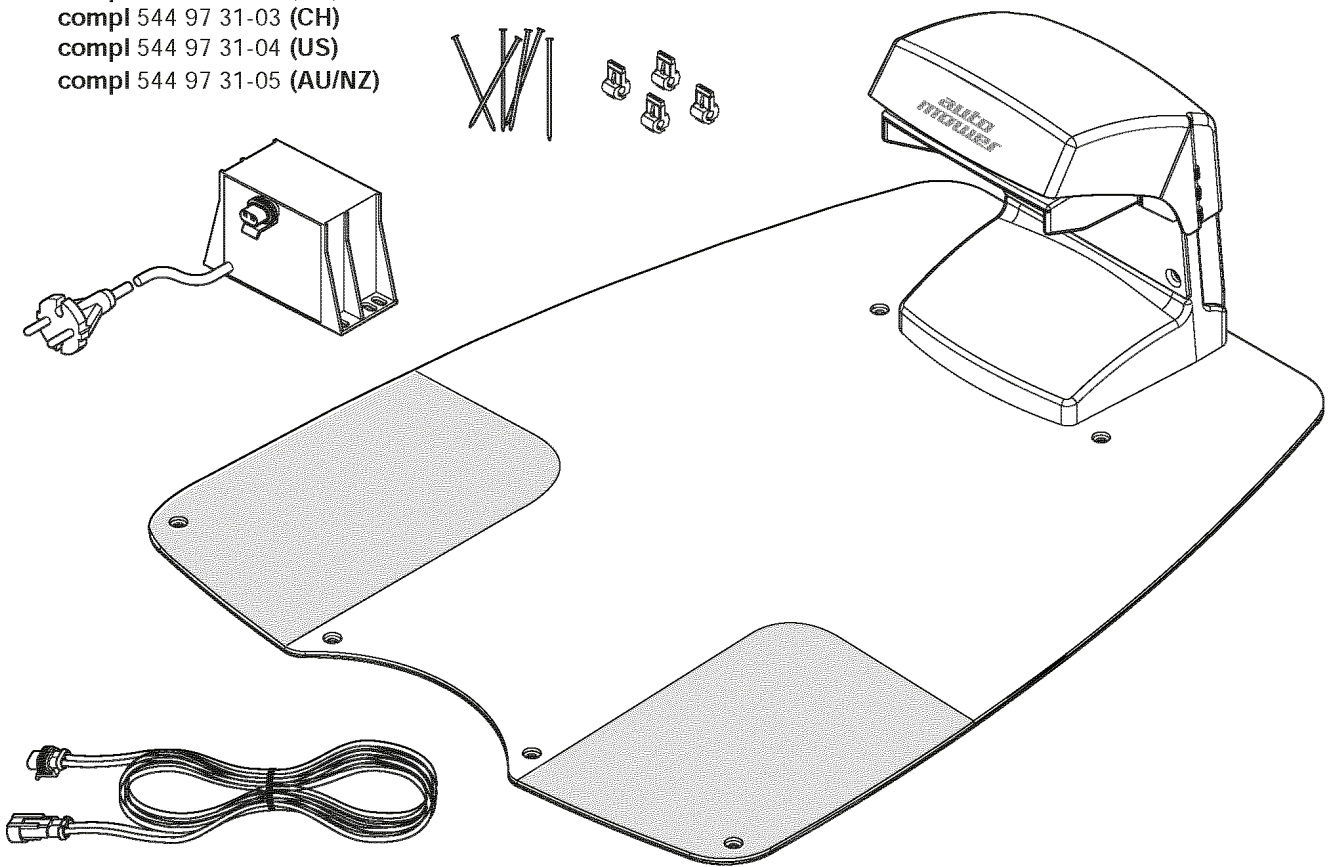
REF.	PART NO.	DESCRIPTION	REMARK	QTY.	KIT
535 1387-01	535138701	BLADE		1	
535 1388-01	535138801	KIT		1	
505 1278-01	505127801	BLADE SET		1	
501 0018-01	501001801	TEST EQUIPMENT		1	
535 1427-07	535142707	CD		1	
504 8213-01	504821301	WALL HANGER		1	
522 4258-01	522425801	BOOSTER		1	
522 5164-01	522516401	GSM MODULE		1	
504 8214-01	504821401	HOUSING		1	
505 1237-01	505123701	ANCHOR		1	
505 1232-01	505123201	HOUSING		1	
505 2294-01	505229401	WASHER		1	
505 1236-01	505123601	PEN		1	
505 1881-01	505188101	LOCKWASHER		1	
505 2507-01	505250701	KIT		1	
510 2099-01	510209901	WHEEL		1	
522 9167-01	522916701	BAG		1	
505 6999-91	505699991	BAG		1	
505 1328-01	505132801	BRUSH		1	
505 1327-01	505132701	BRUSH KIT		1	
535 1412-02	535141202	SEALING		1	
535 1412-01	535141201	SEALING		1	
535 1323-02	535132302	WIRING		1	
522 8518-02	522851802	BLADE SET		1	
522 8517-02	522851702	BLADE SET		1	
522 8516-02	522851602	BLADE SET		1	
505 1278-02	505127802	BLADE SET		1	
535 1388-02	535138802	BLADE SET		1	
535 1387-02	535138702	BLADE SET		1	

D



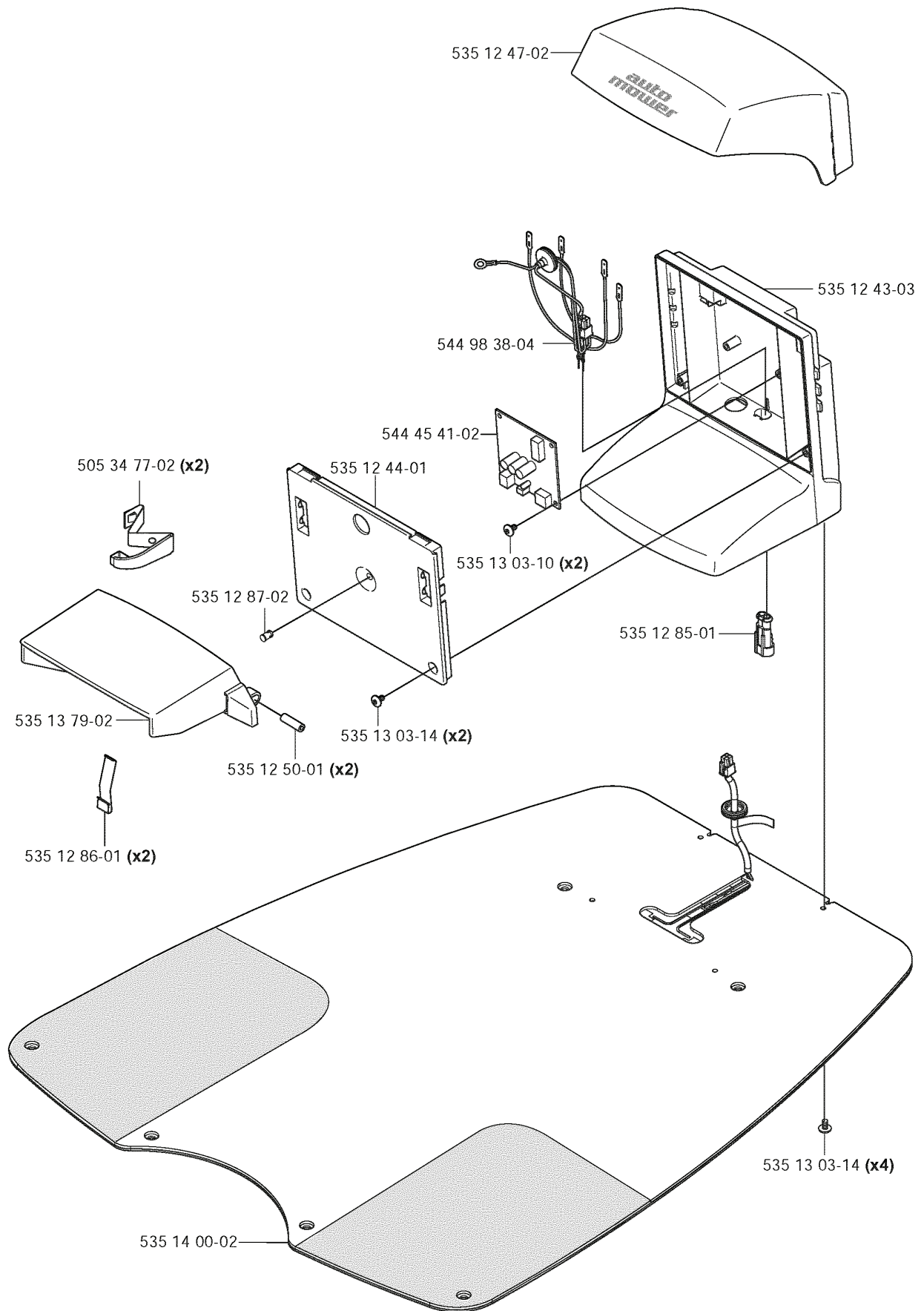
REF.	PART NO.	DESCRIPTION	REMARK	QTY.	KIT
734 11 37-41	734113741	WASHER		4	
502 23 91-01	502239101	SCREW		4	
728 82 85-01	728828501	SCREW IHSETM		1	
535 13 85-01	535138501	KIT		1	
535 13 03-10	535130310	SCREW ITXPANT		4	
535 08 15-01	535081501	COVER WASHER		1	
535 08 25-01	535082501	GASKET		1	
535 07 59-01	535075901	SKID PLATE		1	
535 07 60-01	535076001	SCREW		1	
535 07 57-02	593080801	BALL BEARING	Tube 50 pcs	1	
535 07 57-02	535075702	BALL BEARING		1	
535 12 64-01	535126401	HOUSING		1	
535 13 05-01	535130501	SCREW		3	
535 12 63-01	535126301	CUTTING DISC		3	
535 07 55-01	535075501	HUB		1	
535 12 23-01	535122301	RUBBER GAITERS		1	
525 25 14-01	525251401	TIE WRAP		1	
535 12 20-01	535122001	MOTOR BOWL		1	
535 12 36-01	535123601	MOTOR ASSY		1	

- F** compl 544 97 31-01 (EU)
compl 544 97 31-02 (UK)
compl 544 97 31-03 (CH)
compl 544 97 31-04 (US)
compl 544 97 31-05 (AU/NZ)



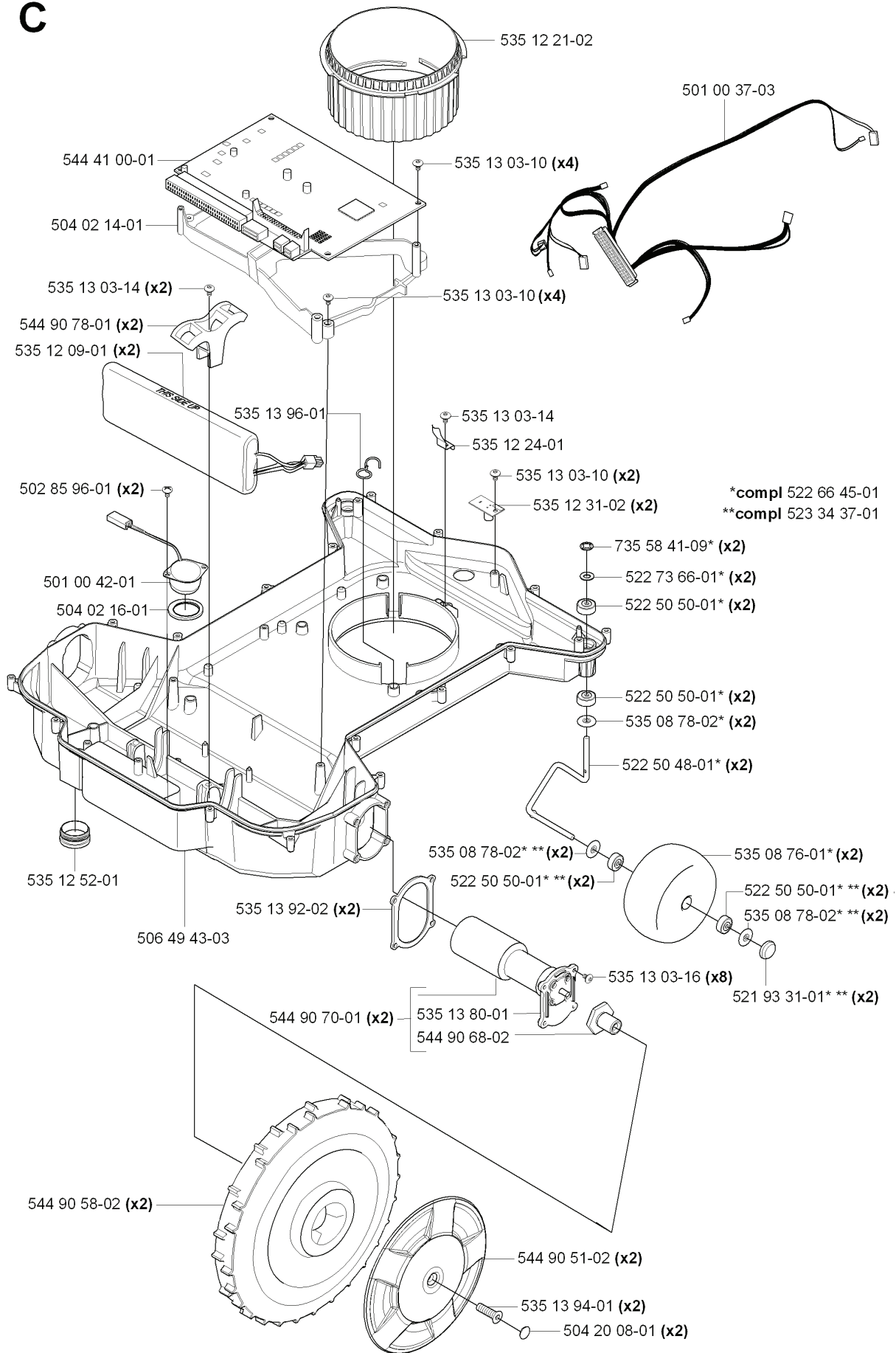
REF.	PART NO.	DESCRIPTION	REMARK	QTY.	KIT
544 97 31-01	544973101	CHARGING STATION		1	
544 97 31-02	544973102	CHARGING STATION		1	
544 97 31-03	544973103	CHARGING STATION		1	
544 97 31-04	544973104	CHARGING STATION		1	
544 97 31-05	544973105	CHARGING STATION		1	

E compl 504 05 37-01



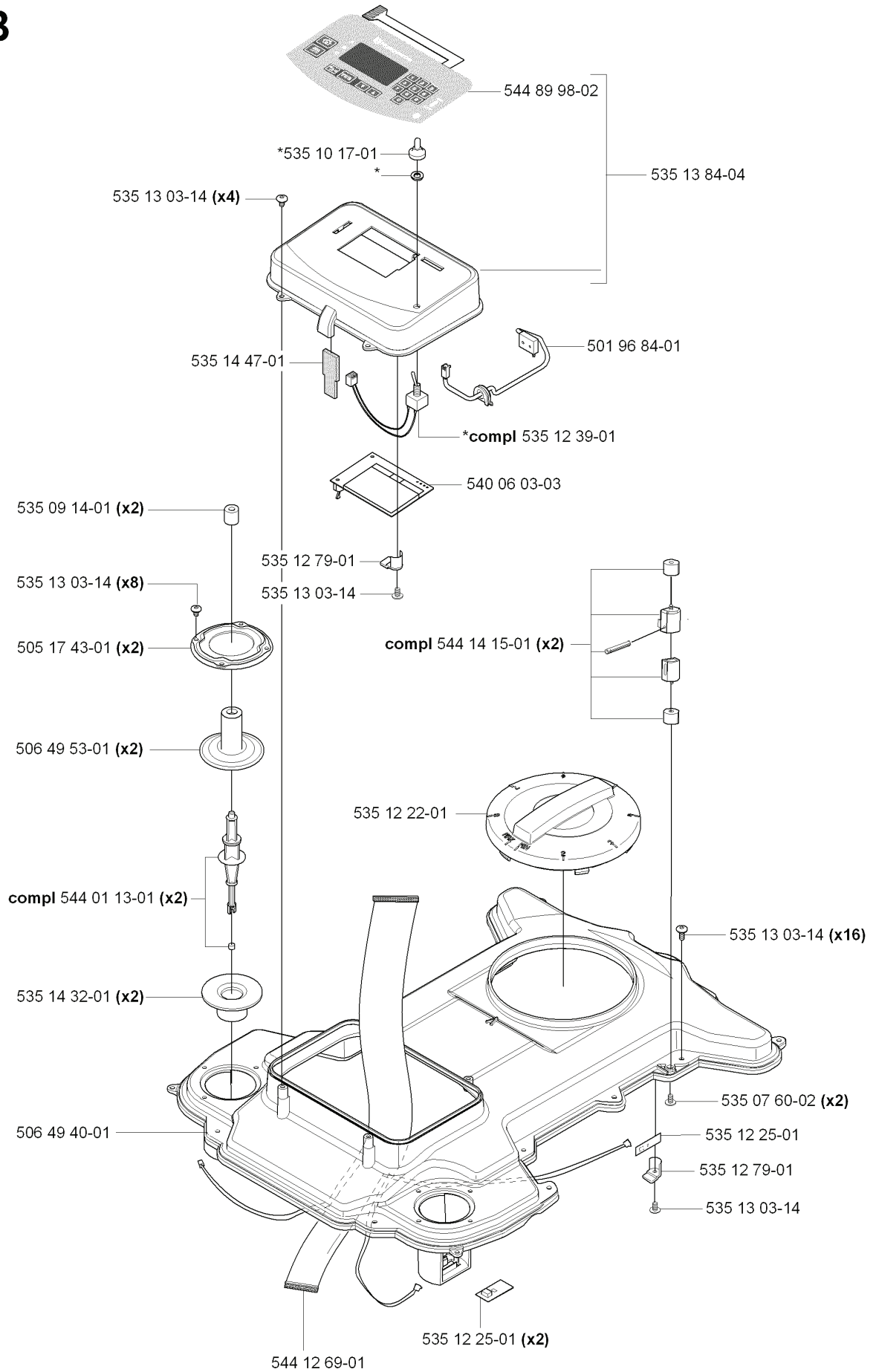
REF.	PART NO.	DESCRIPTION	REMARK	QTY.	KIT
5040537-01	504053701	CHARGING STATION		1	
5053477-02	505347702	CHARGING PLATE		2	
5351379-02	535137902	RETAINER		1	
5351286-01	535128601	SPRING PLATE		2	
5351400-02	535140002	FRAME PLATE		1	
5351250-01	535125001	PEN		2	
5351287-02	535128702	DIODE LENS		1	
5351244-01	535124401	HUB CAP		1	
5449838-04	544983804	WIRING ASSY		1	
5351247-02	535124702	COVER		1	
5351303-10	535130310	SCREW ITPANT		2	
5351303-14	535130314	SCREW ITPANT		4	
5351285-01	535128501	CONTACT		1	
5351243-03	535124303	BODY		1	

C



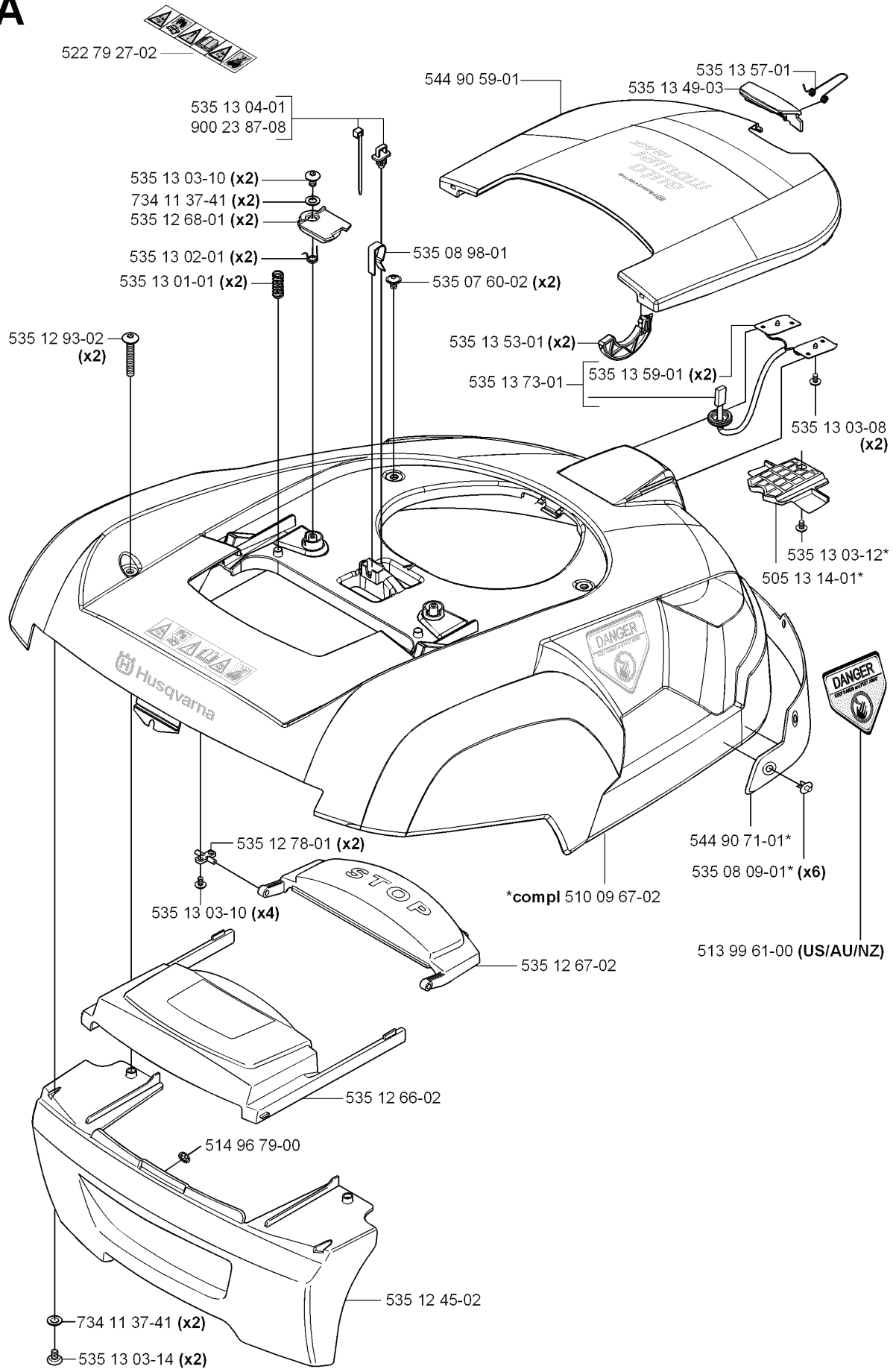
REF.	PART NO.	DESCRIPTION	REMARK	QTY.	KIT
544 41 00-01	544410001	PRINTED CIRCUIT ASSY		1	
504 02 14-01	504021401	SPACER		1	
544 90 78-01	544907801	BRACKET		2	
535 12 09-01	535120901	BATTERY		2	
502 85 96-01	502859601	SCREW		2	
501 00 42-01	501004201	LOUD SPEAKER		1	
504 02 16-01	504021601	SEALING		1	
535 12 52-01	535125201	PLUG		1	
506 49 43-03	506494303	CHASSIS		1	
544 90 58-02	544905802	REAR WHEEL		2	
504 20 08-01	504200801	COVER WASHER		2	
535 13 94-01	535139401	SCREW IHCSFM		2	
544 90 51-02	544905102	HUB CAP		2	
544 90 70-01	544907001	DRIVE MOTOR		2	
535 13 96-01	535139601	CABLE HOLDER		1	
535 12 21-02	535122102	NUT		1	
535 13 03-14	535130314	SCREW ITXPANT		1	
535 12 24-01	535122401	LOCKING SPRING		1	
535 13 03-10	535130310	SCREW ITXPANT		2	
535 12 31-02	535123102	SENSOR CARD		2	
535 08 78-02	535087802	WASHER		2	
522 50 50-01	593081101	BALL BEARING	Tube 50 pcs	1	
535 13 80-01	535138001	GABLE		1	
544 90 68-02	544906802	HUB		1	
521 93 31-01	521933101	COVER WASHER		2	
535 13 03-16	535130316	SCREW ITXPANT		8	
535 08 76-01	535087601	WHEEL		2	
522 50 48-01	522504801	SPINDLE		2	
522 50 50-01	522505001	BALL BEARING		2	
522 73 66-01	522736601	WASHER		2	
735 58 41-09	735584109	WASHER		2	
523 34 37-01	523343701	BEARING KIT		1	
522 66 45-01	522664501	KIT		1	
501 00 37-03	501003703	WIRING ASSY		1	

B



REF.	PART NO.	DESCRIPTION	REMARK	QTY.	KIT
535 14 47-01	535144701	FILTER		1	
535 09 14-01	535091401	DAMPER		2	
505 17 43-01	505174301	DUST SEAL		2	
506 49 53-01	506495301	RUBBER GAITERS		2	
544 01 13-01	544011301	COLUMN		2	
535 14 32-01	535143201	DEFLECTION LIMITER		2	
506 49 40-01	506494001	CHASSIS		1	
544 12 69-01	544126901	WIRING ASSY		1	
535 12 22-01	535122201	STEERING WHEEL		1	
535 13 03-14	535130314	SCREW ITPANT		1	
535 12 79-01	535127901	BRACKET		1	
535 10 17-01	535101701	SWITCH		1	
544 89 98-02	544899802	KEYBOARD		1	
535 13 84-04	535138404	PANEL ASSY		1	
501 96 84-01	501968401	SWITCH		1	
535 12 39-01	535123901	MAIN SWITCH		1	
540 06 03-03	540060303	DISPLAY		1	
544 14 15-01	544141501	SENSOR		2	
535 12 25-01	535122501	SENSOR CARD		1	
535 07 60-02	535076002	SCREW		2	

A



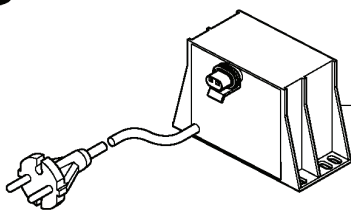
REF.	PART NO.	DESCRIPTION	REMARK	QTY.	KIT
9002387-08	900238708	TIE WRAP		1	
5351303-10	535130310	SCREW ITPANT		2	
5351268-01	535126801	CLAMP		2	
5351302-01	535130201	TORSION SPRING		2	
5351301-01	535130101	SPRING		2	
5351293-02	535129302	SCREW IHANM		2	
5351278-01	535127801	SHAFT		2	
5149679-00	514967900	STARLOCK WASHER		1	
7341137-41	734113741	WASHER		2	
5351303-14	535130314	SCREW ITPANT		2	
5351245-02	535124502	MAIN BODY		1	
5351266-02	535126602	COVER		1	
5351267-02	535126702	SWITCH		1	
5100967-02	510096702	BODY		1	
5351373-01	535137301	WIRING		1	
5351353-01	535135301	PIVOT		2	
5350760-02	535076002	SCREW		2	
5350898-01	535089801	CLIP		1	
5449059-01	544905901	COVER		1	
5351357-01	535135701	TORSION SPRING		1	
5351349-03	535134903	LOCK		1	
5351359-01	535135901	CHARGING PLATE		2	
5351303-08	535130308	SCREW ITPANT		2	
5351303-12	535130312	SCREW ITPANT		1	
5051314-01	505131401	SPACER		1	
5449071-01	544907101	BUMPER		1	
5350809-01	535080901	RIVET		6	
5139961-00	513996100	DECAL		1	



Quick Guide 220 AC & 230 ACX	115 13 05-XX	(US is -26)
Quick Guide 210 C	115 13 03-XX	(US is -26)
Quick Guide Solar Hybrid	115 09 82-XX	(US is -26)
Owner's Manual 220 AC & 230 ACX	115 13 04-XX	
Owner's Manual 210 C	115 13 02-XX	
Owner's Manual Solar Hybrid	115 09 81-XX	
Technical Handbook 2008	115 09 80-XX	

-01	Svenska
-06	Dansk
-11	Soumi
-21	Norsk
-26	GB English
-31	Français
-32	CA Français
-36	Nederlands
-41	Italiano
-46	Español
-51	Deutsch
-56	Русский
-58	Magyar
-61	Polski
-63	Eesti
-64	Latviski
-65	Lietuvių
-68	Slovák
-84	Slovenčina
-90	Česky
-95	US English
-96	US Español

G



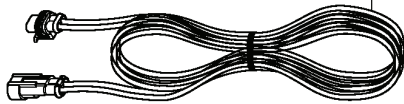
- 501 00 44-01 (EU)
- 501 00 44-02 (UK/IRL)
- 501 00 44-03 (CH)
- 501 00 44-04 (US)
- 501 00 44-05 (AU/NZ)



504 04 97-01 (100 pcs)



535 08 89-01 (6 pcs)



535 12 73-06 (20 m)



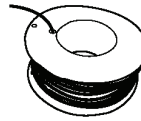
535 12 90-01



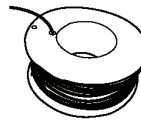
501 98 02-01 (1 pcs)



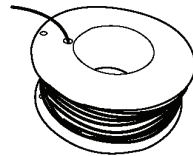
501 98 02-02 (50 pcs)



501 98 03-02 (150 m)



501 98 03-01 (250 m)



522 91 41-01 (500 m, Ø3.4 mm)



544 17 75-01



535 13 16-01

REF.	PART NO.	DESCRIPTION	REMARK	QTY.	KIT
501 00 44-01	501004401	POWER UNIT		1	
501 00 44-02	501004402	POWER UNIT		1	
501 00 44-03	501004403	POWER UNIT		1	
501 00 44-04	501004404	TRANSFORMER		1	
501 00 44-05	501004405	TRANSFORMER		1	
535 12 73-06	535127306	CABLE		1	
535 12 90-01	535129001	CONNECTOR		1	
501 98 02-01	501980201	COUPLER		1	
501 98 02-02	501980202	COUPLER		1	
544 17 75-01	544177501	MEASURING TAPE		1	
535 13 16-01	535131601	LABEL		1	
522 91 41-01	522914101	WIRE		1	
501 98 03-01	501980301	WIRE		1	
501 98 03-02	501980302	WIRE		1	
535 08 89-01	535088901	STAPLE		1	
504 04 97-01	504049701	STAPLE		1	
	PART NO.		REMARK		KIT