

RIDER 15V2, 953 53 37-05, 2004-02

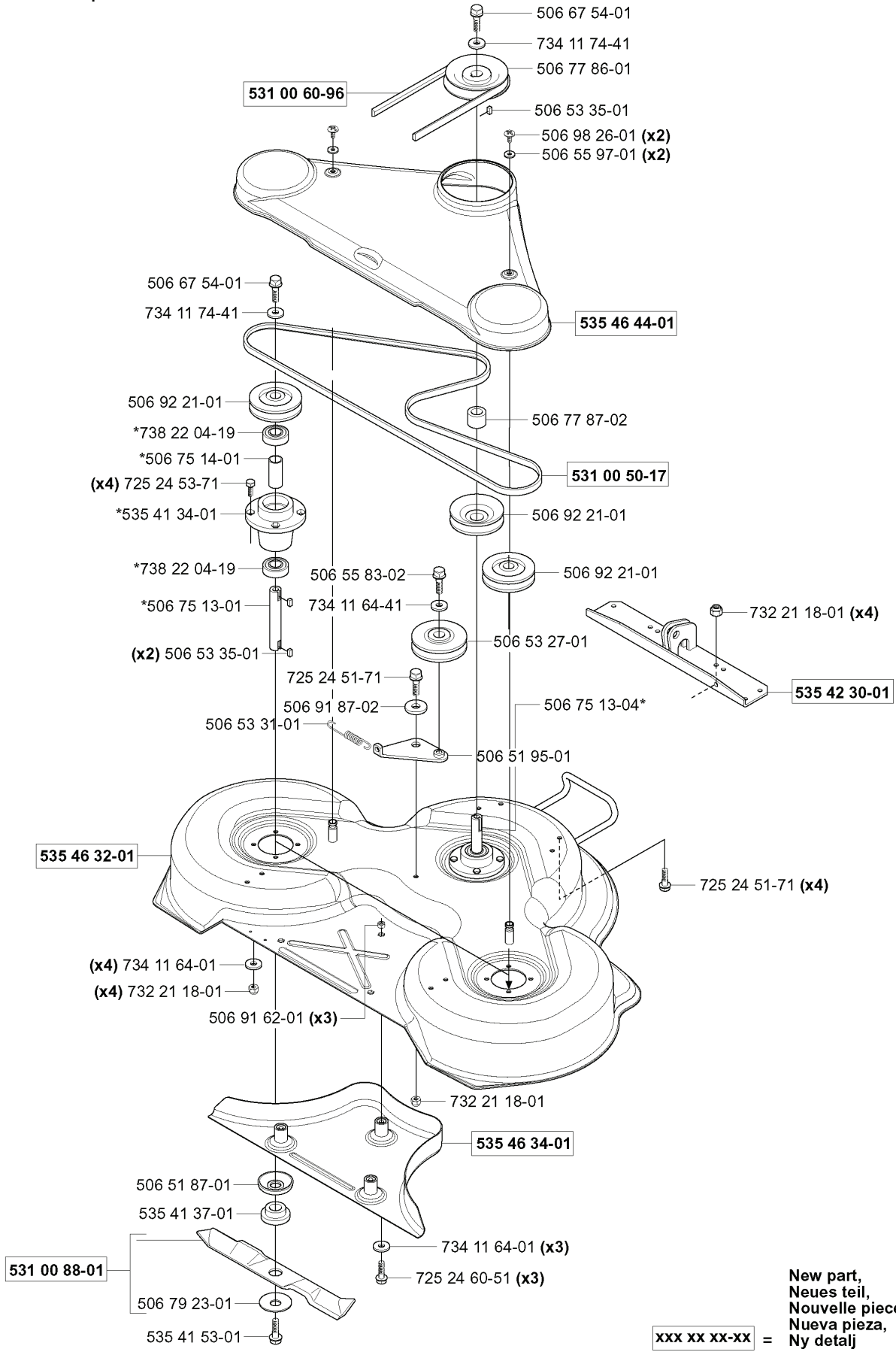
SPARE PARTS LIST

V

Combi 103 compl 953 52 47-01

*compl 506 75 11-01 Yttre. Outer. Exterior. Äusser. Ulko.

*compl 506 75 11-04 Mitten. Centre. Centre. Zentrum. Keski.



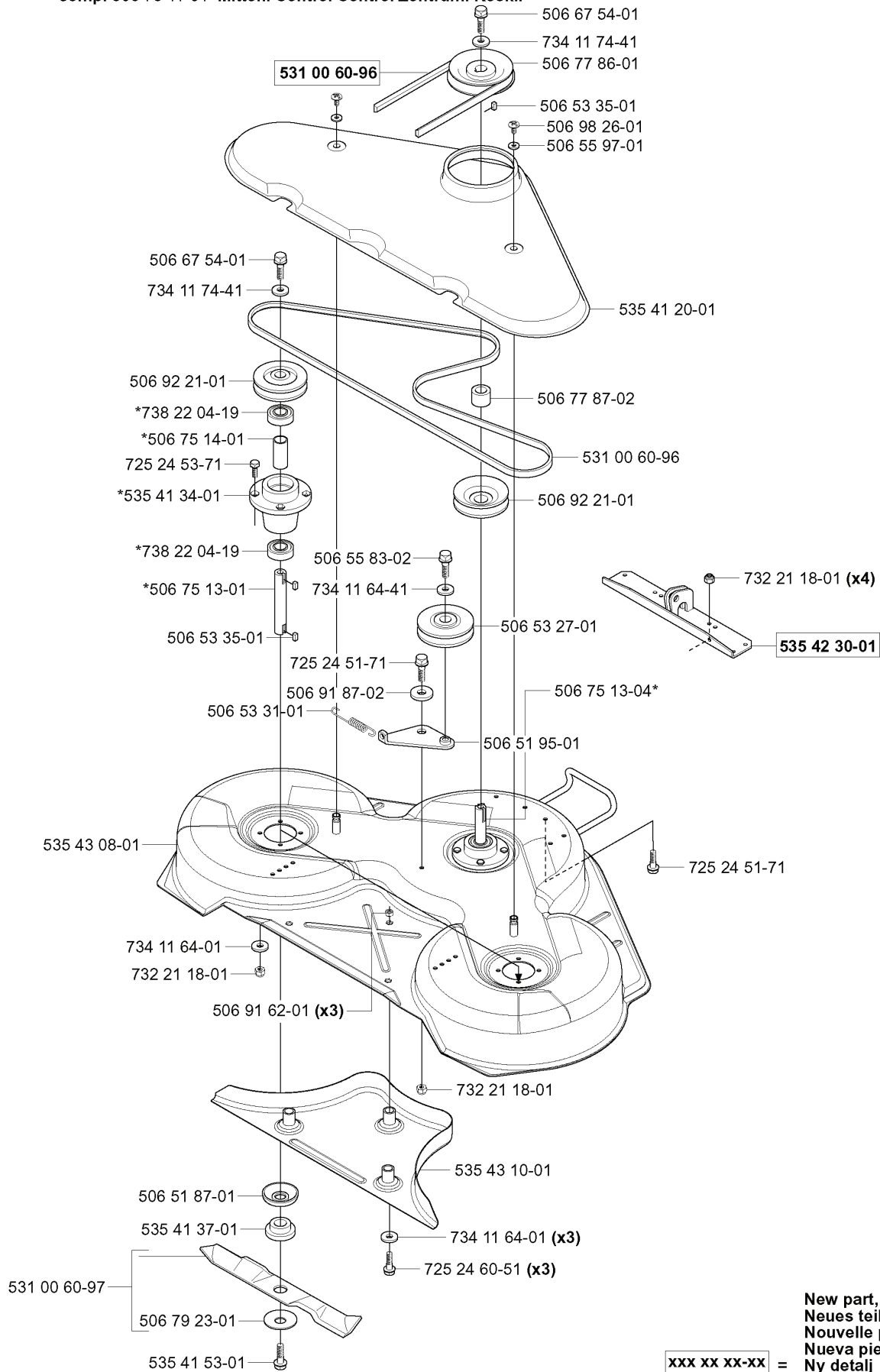
New part,
Neues teil,
Nouvelle piece,
Nueva pieza,
Ny detalj

xxx xx xx-xx =

| REF. | PART NO. | DESCRIPTION | REMARK | QTY. | KIT |
|------------|-----------|--------------------|-----------|------|-----|
| 9535247-01 | 953524701 | CUTTING DECK | COMBI 103 | 1 | |
| 5067511-01 | 506751101 | BLADE HOUSING ASSY | YTTRE. | 1 | |
| 5067511-04 | 506751104 | BLADE HOUSING ASSY | MITTEN. | 1 | |
| 5949780-01 | 594978001 | BELT | | 1 | |
| 5066754-01 | 506675401 | SCREW EHHFM | | 1 | |
| 5069221-01 | 506922101 | PULLEY | | 1 | |
| 5067514-01 | 506751401 | SPACER | | 1 | |
| 7252453-71 | 725245371 | SCREW EHHM | | 4 | |
| 5354134-01 | 535413401 | BEARING HOUSING | | 1 | |
| 7382204-19 | 738220419 | BALL BEARING | | 1 | |
| 5067513-01 | 506751301 | SHAFT | | 1 | |
| 5065335-01 | 506533501 | PARALLEL KEY | | 2 | |
| 5065331-01 | 506533101 | SPRING | | 1 | |
| 5354632-01 | 535463201 | DECK SHELL ASSY | | 1 | |
| 7322118-01 | 732211801 | LOCK NUT | | 4 | |
| 5069162-01 | 506916201 | NUT | | 3 | |
| 5065187-01 | 506518701 | DUST COVER | | 1 | |
| 5354137-01 | 535413701 | ADAPTER | | 1 | |
| 5310088-01 | 531008801 | KNIFE KIT | | 1 | |
| 5067923-01 | 506792301 | KNIFE PLATE | | 1 | |
| 5354153-01 | 535415301 | SCREW | | 1 | |
| 7252460-51 | 725246051 | SCREW EHHM | | 3 | |
| 7341164-01 | 734116401 | WASHER | | 3 | |
| 5354634-01 | 535463401 | PLUG ASSY | | 1 | |
| 5069187-02 | 506918702 | WASHER | | 1 | |
| 7341164-41 | 734116441 | WASHER | | 1 | |
| 5065583-02 | 506558302 | SCREW EHHFT | | 1 | |
| 5065195-01 | 506519501 | SPÄNNARM KPL. | | 1 | |
| 7252451-71 | 725245171 | SCREW EHHM | | 4 | |
| 5067513-04 | 506751304 | SHAFT | | 1 | |
| 5065327-01 | 506532701 | PULLEY | | 1 | |
| 5354230-01 | 535423001 | BRACKET | | 1 | |
| 5310050-17 | 531005017 | BELT | | 1 | |
| 5067787-02 | 506778702 | SPACER | | 1 | |
| 5354644-01 | 535464401 | BELT COVER | | 1 | |
| 5065597-01 | 506559701 | WASHER | | 2 | |
| 5069826-01 | 506982601 | SCREW | | 2 | |
| 5067786-01 | 506778601 | PULLEY | | 1 | |
| 7341174-41 | 734117441 | WASHER | | 1 | |

X Combi 112 compl 953 52 44-01

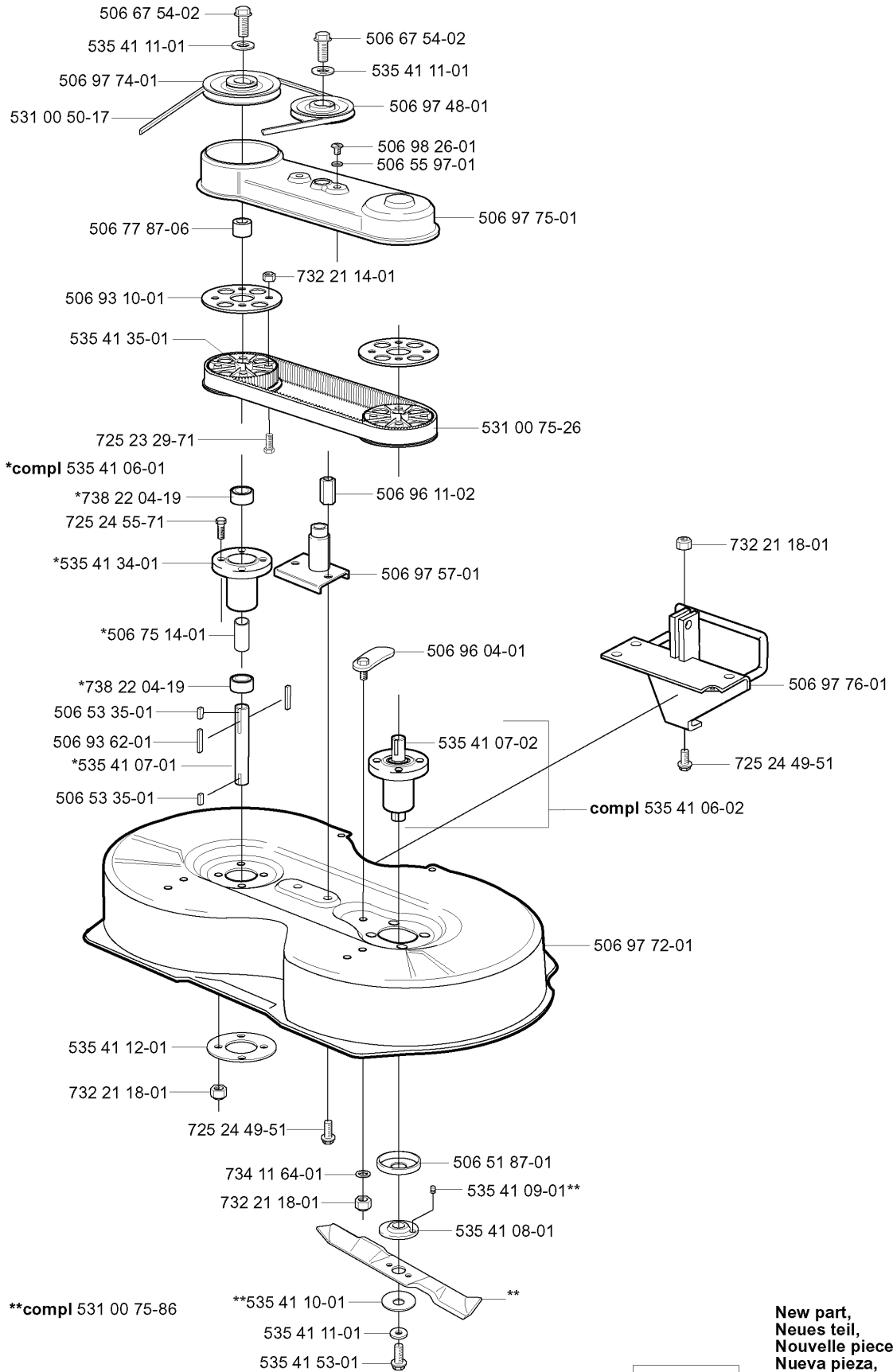
*compl 506 75 11-01 Yttre. Outer. Exterior. Äusser. Ulko.
 *compl 506 75 11-04 Mitten. Centre. Centre. Zentrum. Keski.



xxx xx xx-xx = New part,
 Neues teil,
 Nouvelle piece,
 Nueva pieza,
 Ny detalj

| REF. | PART NO. | DESCRIPTION | REMARK | QTY. | KIT |
|------------|-----------|--------------------|-----------|------|-----|
| 9535244-01 | 953524401 | CUTTING DECK | COMBI 112 | 1 | |
| 5067511-01 | 506751101 | BLADE HOUSING ASSY | YTTRE. | 1 | |
| 5067511-04 | 506751104 | BLADE HOUSING ASSY | MITTEN. | 1 | |
| 5949780-01 | 594978001 | BELT | | 1 | |
| 5067514-01 | 506751401 | SPACER | | 1 | |
| 7252453-71 | 725245371 | SCREW EHHM | | 1 | |
| 5354134-01 | 535413401 | BEARING HOUSING | | 1 | |
| 7382204-19 | 738220419 | BALL BEARING | | 1 | |
| 5067513-01 | 506751301 | SHAFT | | 1 | |
| 5065335-01 | 506533501 | PARALLEL KEY | | 1 | |
| 5065331-01 | 506533101 | SPRING | | 1 | |
| 5354308-01 | 535430801 | DECK SHELL ASSY | | 1 | |
| 5069162-01 | 506916201 | NUT | | 3 | |
| 5065187-01 | 506518701 | DUST COVER | | 1 | |
| 5354137-01 | 535413701 | ADAPTER | | 1 | |
| 5310060-97 | 531006097 | BLADE | | 1 | |
| 5067923-01 | 506792301 | KNIFE PLATE | | 1 | |
| 5354153-01 | 535415301 | SCREW | | 1 | |
| 5069187-02 | 506918702 | WASHER | | 1 | |
| 7341164-41 | 734116441 | WASHER | | 1 | |
| 5065583-02 | 506558302 | SCREW EHHFT | | 1 | |
| 5065327-01 | 506532701 | PULLEY | | 1 | |
| 5065195-01 | 506519501 | SPÄNNARM KPL. | | 1 | |
| 5354310-01 | 535431001 | PLUG ASSY | | 1 | |
| 7341164-01 | 734116401 | WASHER | | 3 | |
| 7252460-51 | 725246051 | SCREW EHHM | | 3 | |
| 7252451-71 | 725245171 | SCREW EHHM | | 1 | |
| 5067513-04 | 506751304 | SHAFT | | 1 | |
| 5354230-01 | 535423001 | BRACKET | | 1 | |
| 7322118-01 | 732211801 | LOCK NUT | | 4 | |
| 5069221-01 | 506922101 | PULLEY | | 1 | |
| 5895146-01 | 589514601 | BELT | | 1 | |
| 5067787-02 | 506778702 | SPACER | | 1 | |
| 5354120-01 | 535412001 | BELTCOVER | | 1 | |
| 5065597-01 | 506559701 | WASHER | | 1 | |
| 5069826-01 | 506982601 | SCREW | | 1 | |
| 5067786-01 | 506778601 | PULLEY | | 1 | |
| 7341174-41 | 734117441 | WASHER | | 1 | |
| 5066754-01 | 506675401 | SCREW EHHFM | | 1 | |

U Bio 90 **compl 953 52 34-01**



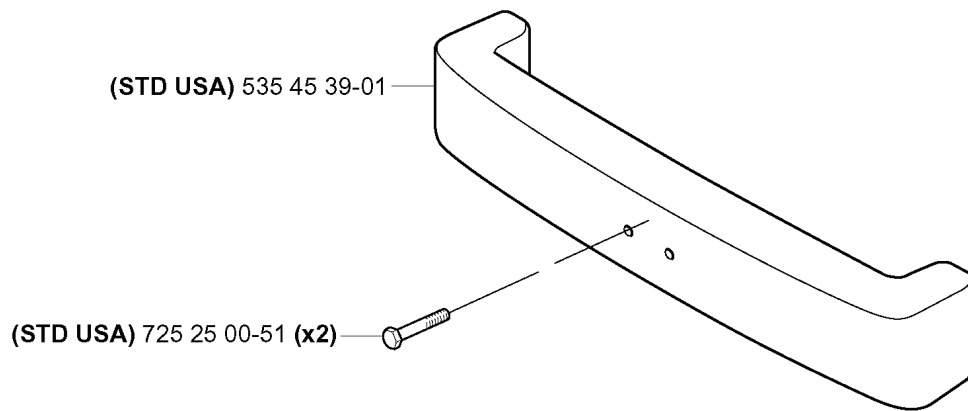
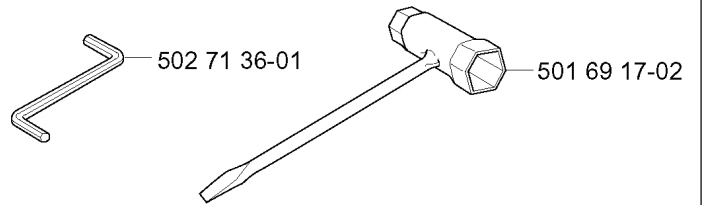
**compl 531 00 75-86

New part,
 Neues teil,
 Nouvelle piece,
 Nueva pieza,
 Ny detalj

xxx xx xx-xx =

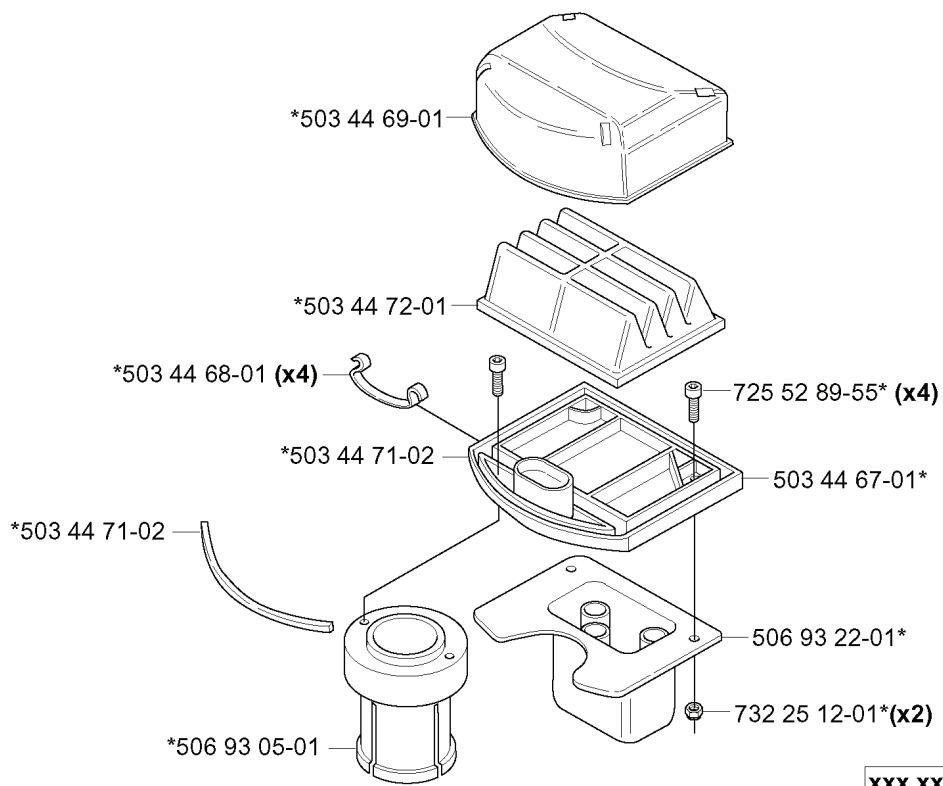
| REF. | PART NO. | DESCRIPTION | REMARK | QTY. | KIT |
|--------------|-----------|---------------------|--------|------|-----|
| 953 52 34-01 | 953523401 | CUTTING DECK | BIO 90 | 1 | |
| 506 67 54-02 | 506675402 | SCREW EHHFM | | 1 | |
| 506 97 74-01 | 506977401 | PULLEY | | 1 | |
| 531 00 50-17 | 531005017 | BELT | | 1 | |
| 506 77 87-06 | 506778706 | SPACER | | 1 | |
| 506 93 10-01 | 506931001 | FLANGE | | 1 | |
| 535 41 35-01 | 535413501 | PULLEY | | 1 | |
| 725 23 29-71 | 725232971 | SCREW EHHM | | 1 | |
| 535 41 06-01 | 535410601 | BLADE HOUSING ASSY | | 1 | |
| 738 22 04-19 | 738220419 | BALL BEARING | | 1 | |
| 725 24 55-71 | 725245571 | SCREW EHHM | | 1 | |
| 535 41 34-01 | 535413401 | BEARING HOUSING | | 1 | |
| 506 75 14-01 | 506751401 | SPACER | | 1 | |
| 506 53 35-01 | 506533501 | PARALLEL KEY | | 1 | |
| 506 93 62-01 | 506936201 | WEDGE | | 1 | |
| 535 41 07-01 | 535410701 | SHAFT | | 1 | |
| 535 41 12-01 | 535411201 | REINFORCEMENT PLATE | | 1 | |
| 732 21 18-01 | 732211801 | LOCK NUT | | 1 | |
| 725 24 49-51 | 725244951 | SCREW | | 1 | |
| 734 11 64-01 | 734116401 | WASHER | | 1 | |
| 531 00 75-86 | 531007586 | BLADE | | 1 | |
| 535 41 10-01 | 535411001 | CUP | | 1 | |
| 535 41 11-01 | 535411101 | WASHER | | 1 | |
| 535 41 53-01 | 535415301 | SCREW | | 1 | |
| 535 41 08-01 | 535410801 | ADAPTER | | 1 | |
| 535 41 09-01 | 535410901 | PIN | | 1 | |
| 506 51 87-01 | 506518701 | DUST COVER | | 1 | |
| 506 97 72-01 | 506977201 | DECK SHELL | | 1 | |
| 535 41 06-02 | 535410602 | BLADE HOUSING ASSY | | 1 | |
| 535 41 07-02 | 535410702 | SHAFT | | 1 | |
| 506 96 04-01 | 506960401 | ECCENTRIC | | 1 | |
| 506 97 57-01 | 506975701 | CONSOLE | | 1 | |
| 506 96 11-02 | 506961102 | DISTANSMUTTER | | 1 | |
| 531 00 75-26 | 531007526 | BELT | | 1 | |
| 732 21 14-01 | 732211401 | LOCK NUT | | 1 | |
| 506 97 76-01 | 506977601 | BRACKET | | 1 | |
| 506 97 75-01 | 506977501 | BELT COVER | | 1 | |
| 506 55 97-01 | 506559701 | WASHER | | 1 | |
| 506 98 26-01 | 506982601 | SCREW | | 1 | |
| 506 97 48-01 | 506974801 | PULLEY | | 1 | |

N Leverans endast som reservdel
Delivery as spare part only
Nur als Ersatzteil lieferbar
Livrabable seulement comme pièce de rechange
Solo como repuesto
Zasilã se jenom jako náhradni díl



| REF. | PART NO. | DESCRIPTION | REMARK | QTY. | KIT |
|--------------|-----------|--------------------|---------|------|-----|
| 535 45 39-01 | 535453901 | COUNTERWEIGHT | STD USA | 1 | |
| 725 25 00-51 | 725250051 | SCREW EHHM | STD USA | 2 | |
| 502 71 36-01 | 502713601 | SPANNER | | 1 | |
| 501 69 17-02 | 501691702 | COMBINATION WRENCH | | 1 | |

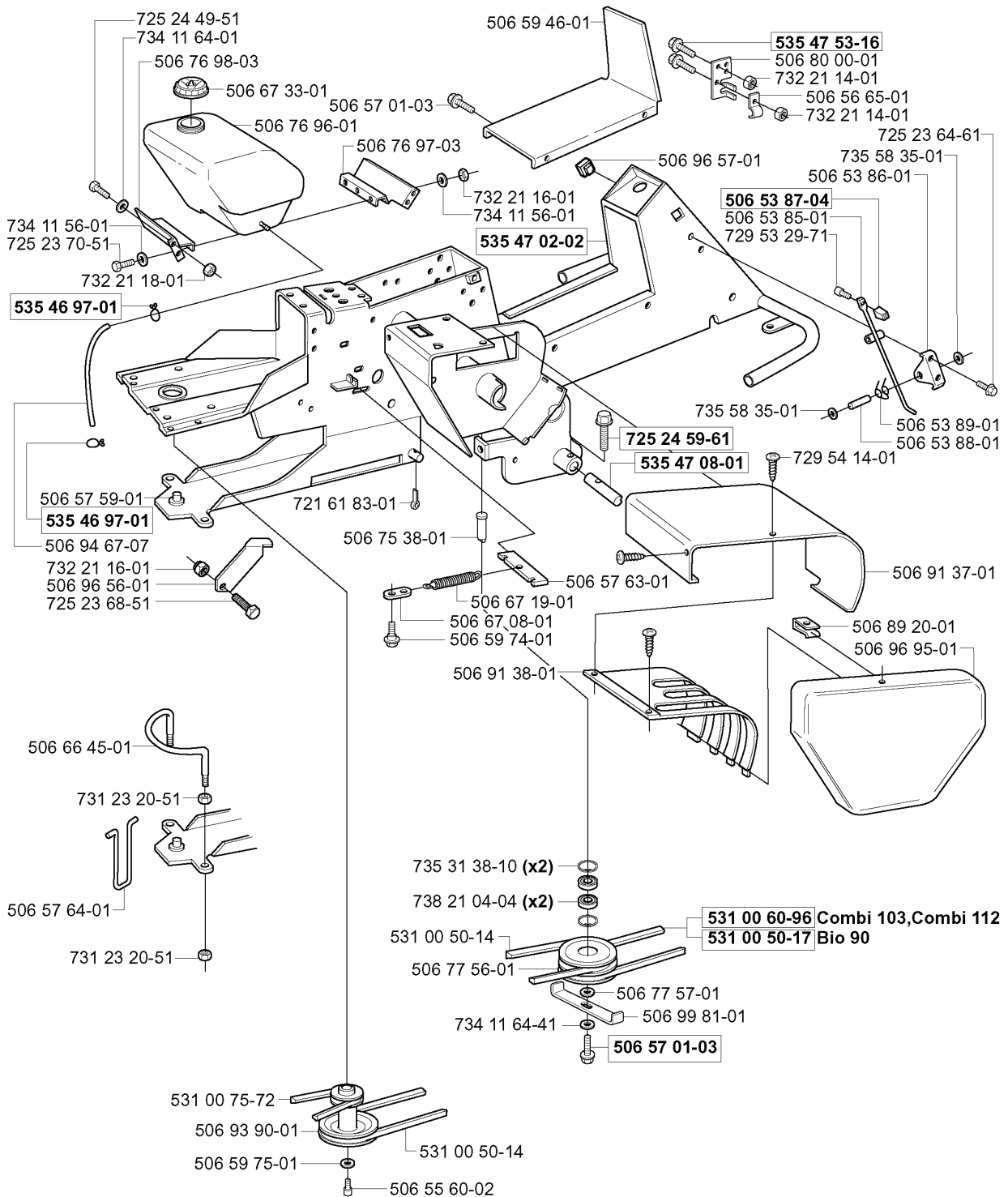
D *compl 506 93 24-01



xxx xx xx-xx = New part,
Neues teil,
Nouvelle piece,
Nueva pieza,
Ny detalj

| REF. | PART NO. | DESCRIPTION | REMARK | QTY. | KIT |
|--------------|-----------|---------------------|--------|------|-----|
| 506 93 24-01 | 506932401 | FILTER | | 1 | |
| 503 44 69-01 | 503446901 | FILTER HOLDER | | 1 | |
| 503 44 72-01 | 503447201 | AIR FILTER | | 1 | |
| 503 44 68-01 | 503446801 | SPRING | | 4 | |
| 503 44 71-02 | 503447102 | GASKET | | 1 | |
| 506 93 05-01 | 506930501 | CONNECTION | | 1 | |
| 732 25 12-01 | 732251201 | HEXAGON LOCKING NUT | | 2 | |
| 506 93 22-01 | 506932201 | MUFFLER | | 1 | |
| 503 44 67-01 | 503446701 | FILTER HOLDER | | 1 | |
| 725 52 89-55 | 725528955 | SCREW IHSCM | | 4 | |

E



531 00 60-96 Combi 103,Combi 112
531 00 50-17 Bio 90

New part,
Neues teil,
Nouvelle piece,
Nueva pieza,
Ny detalj

xxx xx xx-xx =

| REF. | PART NO. | DESCRIPTION | REMARK | QTY. | KIT |
|--------------|-----------|------------------|--------|------|-----|
| 725 24 49-51 | 725244951 | SCREW | | 1 | |
| 734 11 64-01 | 734116401 | WASHER | | 1 | |
| 506 76 98-03 | 506769803 | BRACKET | | 1 | |
| 506 67 33-01 | 506673301 | TANK CAP ASSY | | 1 | |
| 506 76 96-01 | 506769601 | FUEL TANK | | 1 | |
| 506 57 01-03 | 506570103 | SCREW EHHFM | | 1 | |
| 506 76 97-03 | 506769703 | BRACKET | | 1 | |
| 725 23 70-51 | 725237051 | SCREW | | 1 | |
| 732 21 18-01 | 732211801 | LOCK NUT | | 1 | |
| 535 46 97-01 | 535469701 | HOSE BRACE | | 1 | |
| 506 57 59-01 | 506575901 | PIVOT | | 1 | |
| 506 94 67-07 | 506946707 | FUEL HOSE | | 1 | |
| 732 21 16-01 | 732211601 | LOCK NUT | | 1 | |
| 506 96 56-01 | 506965601 | PROTECTIVE PLATE | | 1 | |
| 725 23 68-51 | 725236851 | SCREW | | 1 | |
| 506 66 45-01 | 506664501 | BELT GUIDE | | 1 | |
| 731 23 20-51 | 731232051 | HEXAGON NUT | | 1 | |
| 506 57 64-01 | 506576401 | CABLE HOLDER | | 1 | |
| 531 00 75-72 | 531007572 | BELT | | 1 | |
| 506 93 90-01 | 506939001 | PULLEY | | 1 | |
| 506 59 75-01 | 506597501 | WASHER | | 1 | |
| 506 55 60-02 | 506556002 | SCREW UNC | | 1 | |
| 531 00 50-14 | 531005014 | BELT | | 1 | |
| 734 11 64-41 | 734116441 | WASHER | | 1 | |
| 506 77 56-01 | 506775601 | MELLANHJUL | | 1 | |
| 738 21 04-04 | 738210404 | BALL BEARING | | 2 | |
| 735 31 38-10 | 735313810 | CIRCLIP | | 2 | |
| 506 91 38-01 | 506913801 | CONTROL PLATE | | 1 | |
| 506 59 74-01 | 506597401 | SCREW EHHFM | | 1 | |
| 506 67 08-01 | 506670801 | LINK | | 1 | |
| 506 67 19-01 | 506671901 | SPRING | | 1 | |
| 506 75 38-01 | 506753801 | AXLE | | 1 | |
| 721 61 83-01 | 721618301 | SPLIT PIN | | 1 | |
| 535 47 02-02 | 535470202 | FRAME | | 1 | |
| 734 11 56-01 | 734115601 | WASHER | | 1 | |
| 506 59 46-01 | 506594601 | LOCK GOLVTUNNEL | | 1 | |
| 506 96 57-01 | 506965701 | PLUG | | 1 | |
| 725 24 59-61 | 725245961 | SCREW EHHFT | | 1 | |
| 535 47 08-01 | 535470801 | WHEEL AXLE | | 1 | |
| 506 57 63-01 | 506576301 | SPRING RETAINER | | 1 | |
| 506 77 57-01 | 506775701 | WASHER | | 1 | |

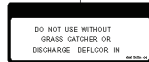
| REF. | PART NO. | DESCRIPTION | REMARK | QTY. | KIT |
|--------------|-----------|----------------|----------------------|------|-----|
| 506 99 81-01 | 506998101 | BELT GUIDE | | 1 | |
| 531 00 50-17 | 531005017 | BELT | BIO 90 | 1 | |
| 594 97 80-01 | 594978001 | BELT | COMBI 103, COMBI 112 | 1 | |
| 506 96 95-01 | 506969501 | CONTROL CAP | | 1 | |
| 506 89 20-01 | 506892001 | SPEED NUT | | 1 | |
| 506 91 37-01 | 506913701 | COVER PLATE | | 1 | |
| 729 54 14-01 | 729541401 | SCREW CRPANT | | 1 | |
| 506 53 88-01 | 506538801 | SHAFT | | 1 | |
| 506 53 89-01 | 506538901 | SPRING | | 1 | |
| 729 53 29-71 | 729532971 | SCREW CRPANT | | 1 | |
| 506 53 85-01 | 506538501 | LOCKING ARM | | 1 | |
| 506 53 87-04 | 506538704 | CONTROL BUTTON | | 1 | |
| 506 53 86-01 | 506538601 | BRACKET | | 1 | |
| 735 58 35-01 | 735583501 | WASHER | | 1 | |
| 725 23 64-61 | 725236461 | SCREW EHHFT | | 1 | |
| 732 21 14-01 | 732211401 | LOCK NUT | | 1 | |
| 506 56 65-01 | 506566501 | CLIP | | 1 | |
| 506 80 00-01 | 506800001 | BRACKET | | 1 | |
| 535 47 53-16 | 535475316 | SCREW EHHFM | | 1 | |

M
USA

Start/Warning
506 94 92-01



Side discharge
506 81 80-01



Import decal
506 98 39-01

Husqvarna Forest & Garden
9006 Perimeter Woods Dr.
Charlotte, NC 28216, USA

Side discharge
506 88 18-01



CPSC
506 67 62-01



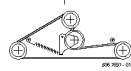
Standard decal
506 88 07-02



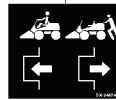
506 89 32-01



506 78 97-01



506 94 47-01



EC 535 43 20-01



Warning
506 94 48-01

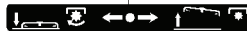
506 99 96-01



506 89 33-01



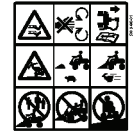
506 84 28-03



506 91 57-01



506 58 45-01



535 45 00-01



535 44 98-01



535 44 99-01



535 45 01-01 (x2)



535 45 41-01



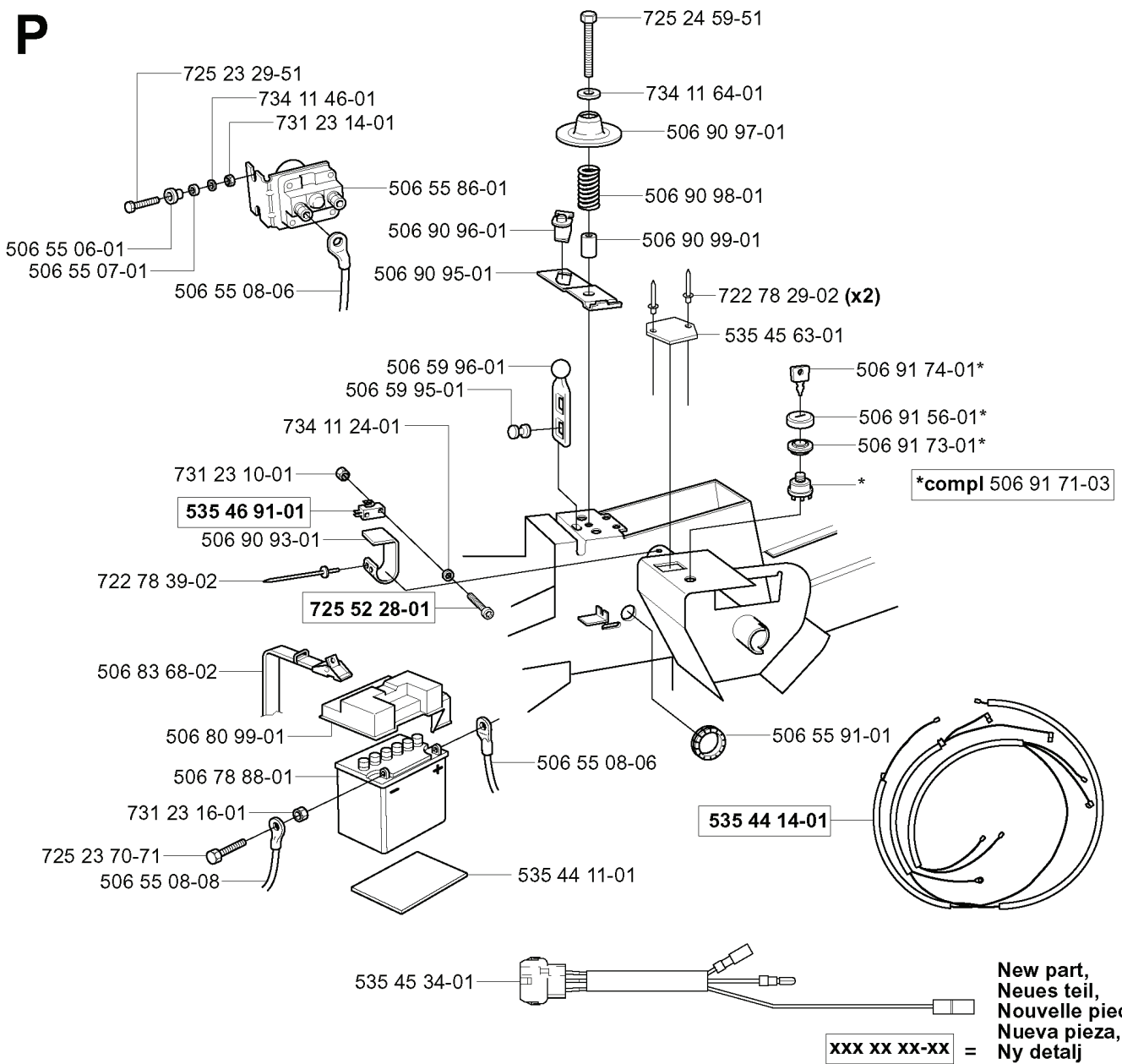
535 45 41-02

New part,
Neues teil,
Nouvelle piece,
Nueva pieza,
Ny detalj

xxx xx xx-xx =

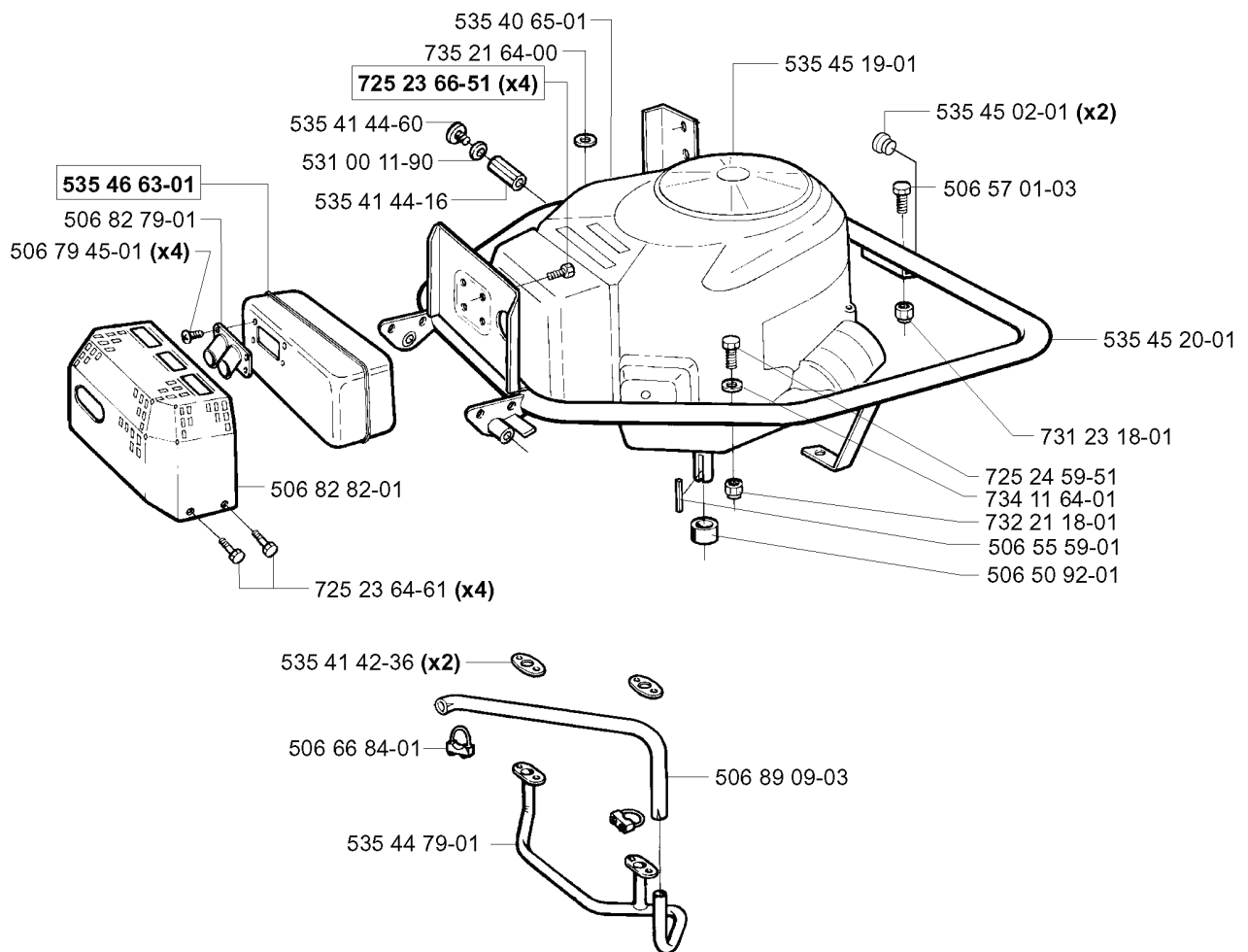
| REF. | PART NO. | DESCRIPTION | REMARK | QTY. | KIT |
|--------------|-----------|---------------------|----------------|------|-----|
| 506 94 92-01 | 506949201 | DECAL | START/WARNING | 1 | |
| 506 99 96-01 | 506999601 | LABEL | | 1 | |
| 535 45 00-01 | 535450001 | DECAL | | 1 | |
| 535 45 41-01 | 535454101 | STRIPES MOTORKÁPA V | | 1 | |
| 506 89 33-01 | 506893301 | DECAL | | 1 | |
| 506 89 32-01 | 506893201 | CONTROL LABEL | | 1 | |
| 506 81 80-01 | 506818001 | LABEL | SIDE DISCHARGE | 1 | |
| 506 98 39-01 | 506983901 | DECAL | IMPORT DECAL | 1 | |
| 506 78 97-01 | 506789701 | LABEL | | 1 | |
| 506 84 28-03 | 506842803 | DECAL | | 1 | |
| 506 58 45-01 | 506584501 | LABEL | | 1 | |
| 535 44 98-01 | 535449801 | DECAL | | 1 | |
| 535 45 01-01 | 535450101 | DECAL | | 2 | |
| 535 44 99-01 | 535449901 | DECAL | | 1 | |
| 506 91 57-01 | 506915701 | DECAL | | 1 | |
| 506 94 47-01 | 506944701 | HYDROSTATIC LABEL | | 1 | |
| 506 88 18-01 | 506881801 | LABEL | SIDE DISCHARGE | 1 | |
| 506 67 62-01 | 506676201 | LABEL WARNING | CPSC | 1 | |
| 535 43 20-01 | 535432001 | DECAL | | 1 | |
| 535 45 41-02 | 535454102 | STRIPES MOTORKÁPA H | | 1 | |
| 506 94 48-01 | 506944801 | LABEL | WARNING | 1 | |
| 506 88 07-02 | 506880702 | DECAL | STANDARD DECAL | 1 | |

P



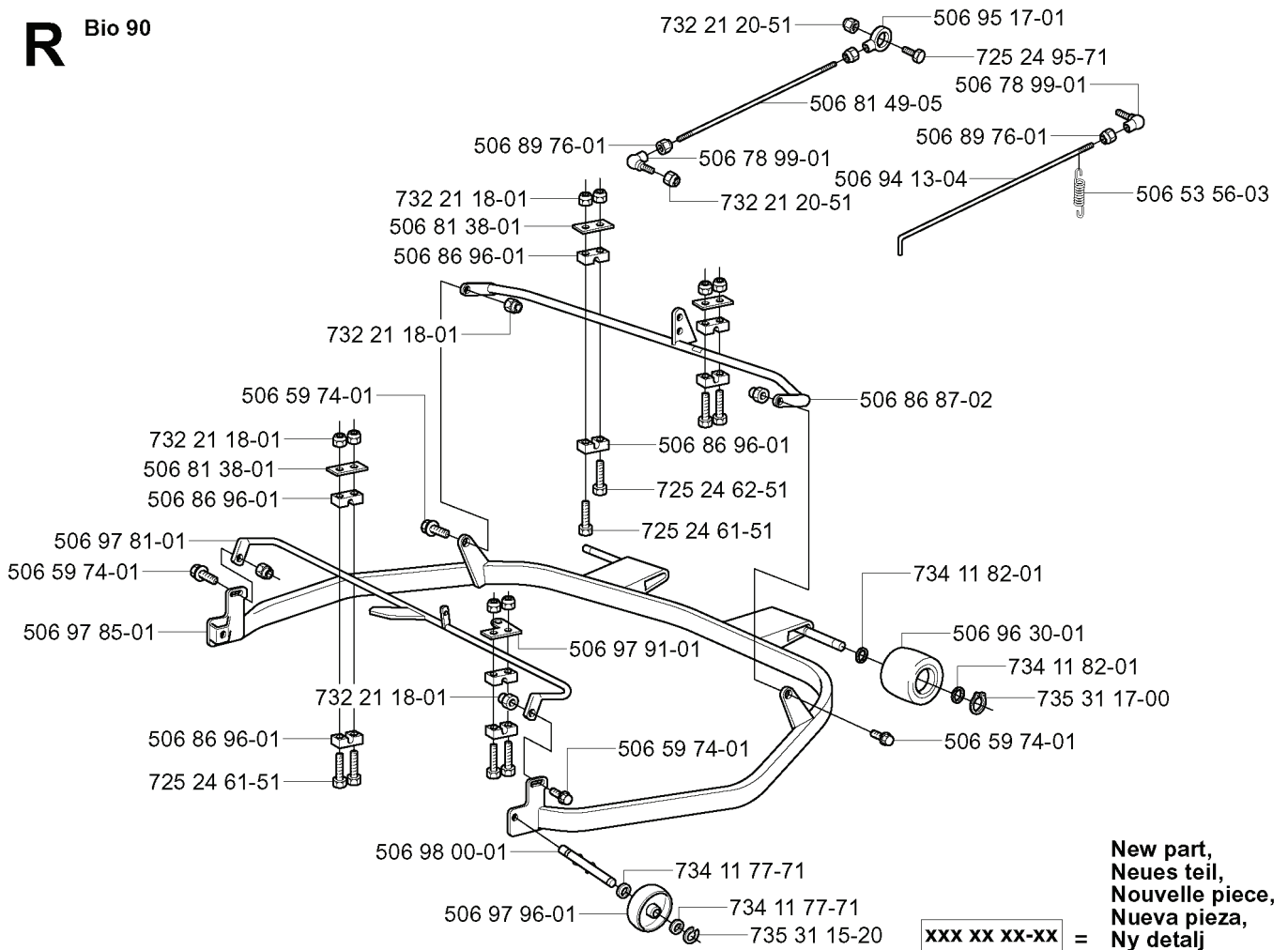
| REF. | PART NO. | DESCRIPTION | REMARK | QTY. | KIT |
|--------------|-----------|----------------------|--------|------|-----|
| 725 23 29-51 | 725232951 | SCREW | | 1 | |
| 734 11 46-01 | 734114601 | WASHER | | 1 | |
| 731 23 14-01 | 731231401 | HEXAGON NUT | | 1 | |
| 506 55 06-01 | 506550601 | PLUG | | 1 | |
| 506 55 07-01 | 506550701 | INSULATING WASHER | | 1 | |
| 731 23 10-01 | 731231001 | HEXAGON NUT | | 1 | |
| 535 46 91-01 | 535469101 | SWITCH | | 1 | |
| 506 90 93-01 | 506909301 | PLATE SPRING | | 1 | |
| 722 78 39-02 | 722783902 | BLIND RIVET | | 1 | |
| 506 83 68-02 | 506836802 | BELT | | 1 | |
| 506 80 99-01 | 506809901 | BATTERY COVER | | 1 | |
| 506 78 88-01 | 506788801 | BATTERY | | 1 | |
| 731 23 16-01 | 731231601 | HEXAGON NUT | | 1 | |
| 725 23 70-71 | 725237071 | SCREW EHHM | | 1 | |
| 506 55 08-08 | 506550808 | STARTKABEL BATT-MOTO | | 1 | |
| 535 45 34-01 | 535453401 | WIRING ADAPTER | | 1 | |
| 725 52 28-01 | 725522801 | SCREW IHSCM | | 1 | |
| 734 11 24-01 | 734112401 | WASHER | | 1 | |
| 506 59 95-01 | 506599501 | BUTTON | | 1 | |
| 506 59 96-01 | 506599601 | GUMMISTROPP | | 1 | |
| 506 90 95-01 | 506909501 | SWITCH ATTACHMENT SE | | 1 | |
| 506 90 96-01 | 506909601 | SWITCH | | 1 | |
| 506 55 86-01 | 506558601 | RELAY | | 1 | |
| 725 24 59-51 | 725245951 | SCREW EHHM | | 1 | |
| 734 11 64-01 | 734116401 | WASHER | | 1 | |
| 506 90 97-01 | 506909701 | SPRING WASHER | | 1 | |
| 506 90 98-01 | 506909801 | SPRING | | 1 | |
| 506 90 99-01 | 506909901 | SPACING TUBE | | 1 | |
| 722 78 29-02 | 722782902 | BLIND RIVET | | 2 | |
| 535 45 63-01 | 535456301 | COVER | | 1 | |
| 506 55 08-06 | 506550806 | STARTKABEL BATT-RELÄ | | 1 | |
| 535 44 11-01 | 535441101 | BATTERY MAT | | 1 | |
| 535 44 14-01 | 535441401 | WIRING | | 1 | |
| 506 55 91-01 | 506559101 | SKAVSKYDD | | 1 | |
| 506 91 71-03 | 506917103 | IGNITION LOCK | | 1 | |
| 506 91 73-01 | 506917301 | NUT | | 1 | |
| 506 91 56-01 | 506915601 | PROTECTION | | 1 | |
| 506 91 74-01 | 506917401 | KEY | | 1 | |

C Kawasaki FH430V



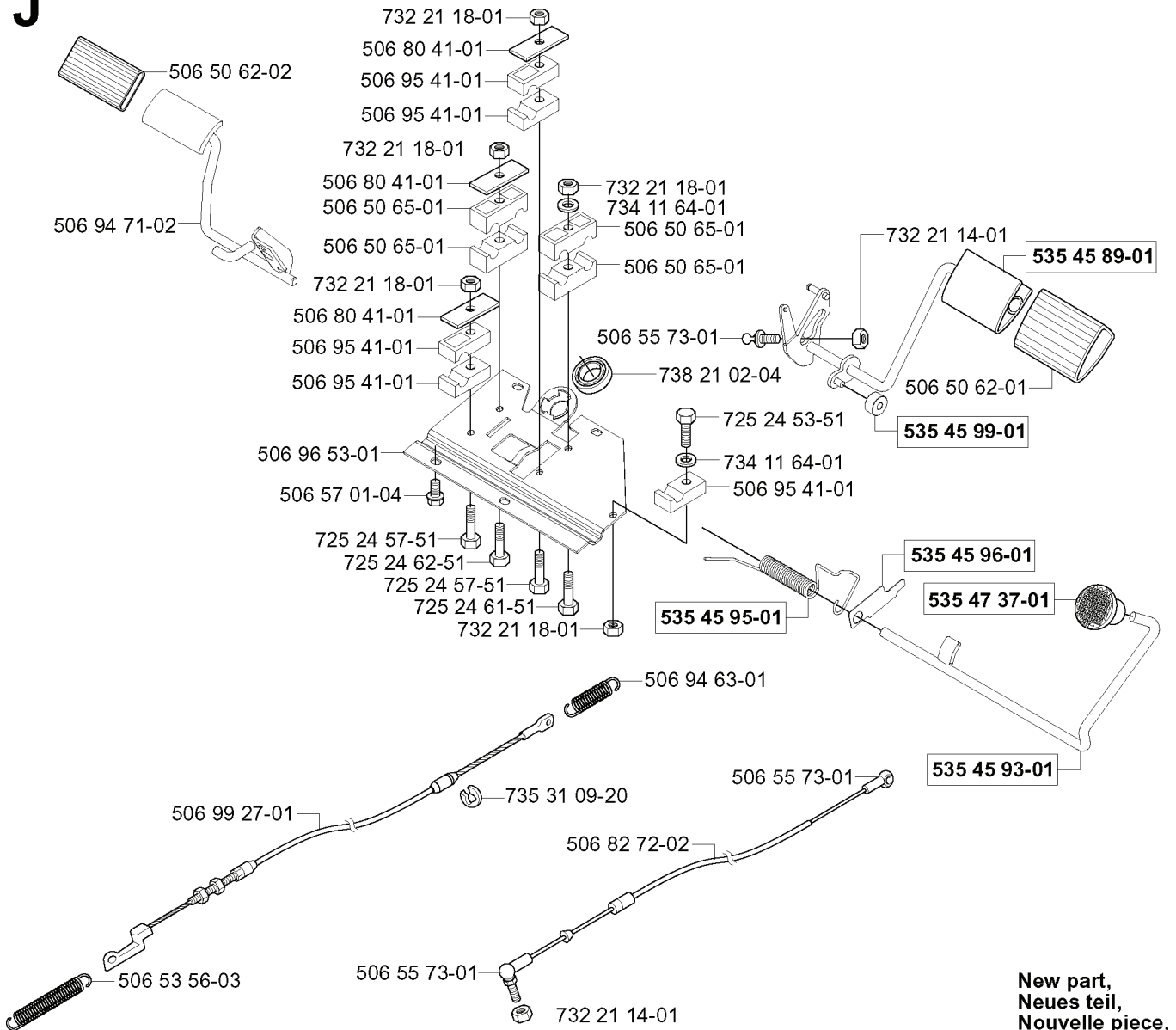
| REF. | PART NO. | DESCRIPTION | REMARK | QTY. | KIT |
|--------------|-----------|-----------------------|--------|------|-----|
| 535 40 65-01 | 535406501 | MOTOR | | 1 | |
| 735 21 64-00 | 735216400 | LOCKWASHER | | 1 | |
| 725 23 66-51 | 725236651 | HEXAGONAL SCREW M6X12 | | 4 | |
| 535 41 44-60 | 535414460 | PLUG | | 1 | |
| 531 00 11-90 | 531001190 | O-RING | | 1 | |
| 535 41 44-16 | 535414416 | JOINT | | 1 | |
| 535 46 63-01 | 535466301 | MUFFLER ASSY | | 1 | |
| 506 82 79-01 | 506827901 | DEFLECTOR | | 1 | |
| 506 79 45-01 | 506794501 | SCREW | | 4 | |
| 506 82 82-01 | 506828201 | BURN GUARD ASSY | | 1 | |
| 725 23 64-61 | 725236461 | SCREW EHHFT | | 4 | |
| 535 41 42-36 | 535414236 | GASKET | | 2 | |
| 506 66 84-01 | 506668401 | CLAMP ASSY | | 1 | |
| 535 44 79-01 | 535447901 | GRENÖR KPL. | | 1 | |
| 506 89 09-03 | 506890903 | EXHAUST PIPE ASSY | | 1 | |
| 506 50 92-01 | 506509201 | SPACING SLEEVE | | 1 | |
| 506 55 59-01 | 506555901 | WEDGE | | 1 | |
| 732 21 18-01 | 732211801 | LOCK NUT | | 1 | |
| 734 11 64-01 | 734116401 | WASHER | | 1 | |
| 725 24 59-51 | 725245951 | SCREW EHHM | | 1 | |
| 731 23 18-01 | 731231801 | HEXAGON NUT | | 1 | |
| 535 45 20-01 | 535452001 | ENGINE FRAME | | 1 | |
| 506 57 01-03 | 506570103 | SCREW EHHFM | | 1 | |
| 535 45 02-01 | 535450201 | PLUG | | 2 | |
| 535 45 19-01 | 535451901 | MOTOR | | 1 | |

R Bio 90



| REF. | PART NO. | DESCRIPTION | REMARK | QTY. | KIT |
|--------------|-----------|-----------------------|--------|------|-----|
| 506 81 38-01 | 506813801 | REINFORCING PLATE | | 1 | |
| 506 86 96-01 | 506869601 | BEARING | | 1 | |
| 506 97 81-01 | 506978101 | BAKRE TVÄRRÖR KPL. | | 1 | |
| 506 59 74-01 | 506597401 | SCREW EHHFM | | 1 | |
| 506 97 85-01 | 506978501 | HAND GUARD ASSY | | 1 | |
| 732 21 18-01 | 732211801 | LOCK NUT | | 1 | |
| 725 24 61-51 | 725246151 | SCREW EHHM | | 1 | |
| 506 98 00-01 | 506980001 | SHAFT | | 1 | |
| 506 97 96-01 | 506979601 | WHEEL | | 1 | |
| 735 31 15-20 | 735311520 | E-CLIP | | 1 | |
| 734 11 77-71 | 734117771 | WASHER | | 1 | |
| 506 97 91-01 | 506979101 | SERVICEBRICKA | | 1 | |
| 725 24 62-51 | 725246251 | SCREW EHHM | | 1 | |
| 732 21 20-51 | 732212051 | NUT | | 1 | |
| 506 81 49-05 | 506814905 | ROD | | 1 | |
| 506 94 13-04 | 506941304 | CONNECTION ROD | | 1 | |
| 506 86 87-02 | 506868702 | FRÄMRE TVÄRRÖR KPL. | | 1 | |
| 734 11 82-01 | 734118201 | WASHER | | 1 | |
| 506 96 30-01 | 506963001 | WHEEL ASSY | | 1 | |
| 735 31 17-00 | 735311700 | CIRCLIP | | 1 | |
| 506 53 56-03 | 506535603 | DRAW SPRING | | 1 | |
| 506 89 76-01 | 506897601 | NUT | | 1 | |
| 506 78 99-01 | 506789901 | VINKELLÄNK DIN 7 1802 | | 1 | |
| 725 24 95-71 | 725249571 | SCREW EHHM | | 1 | |
| 506 95 17-01 | 506951701 | ROD END | | 1 | |

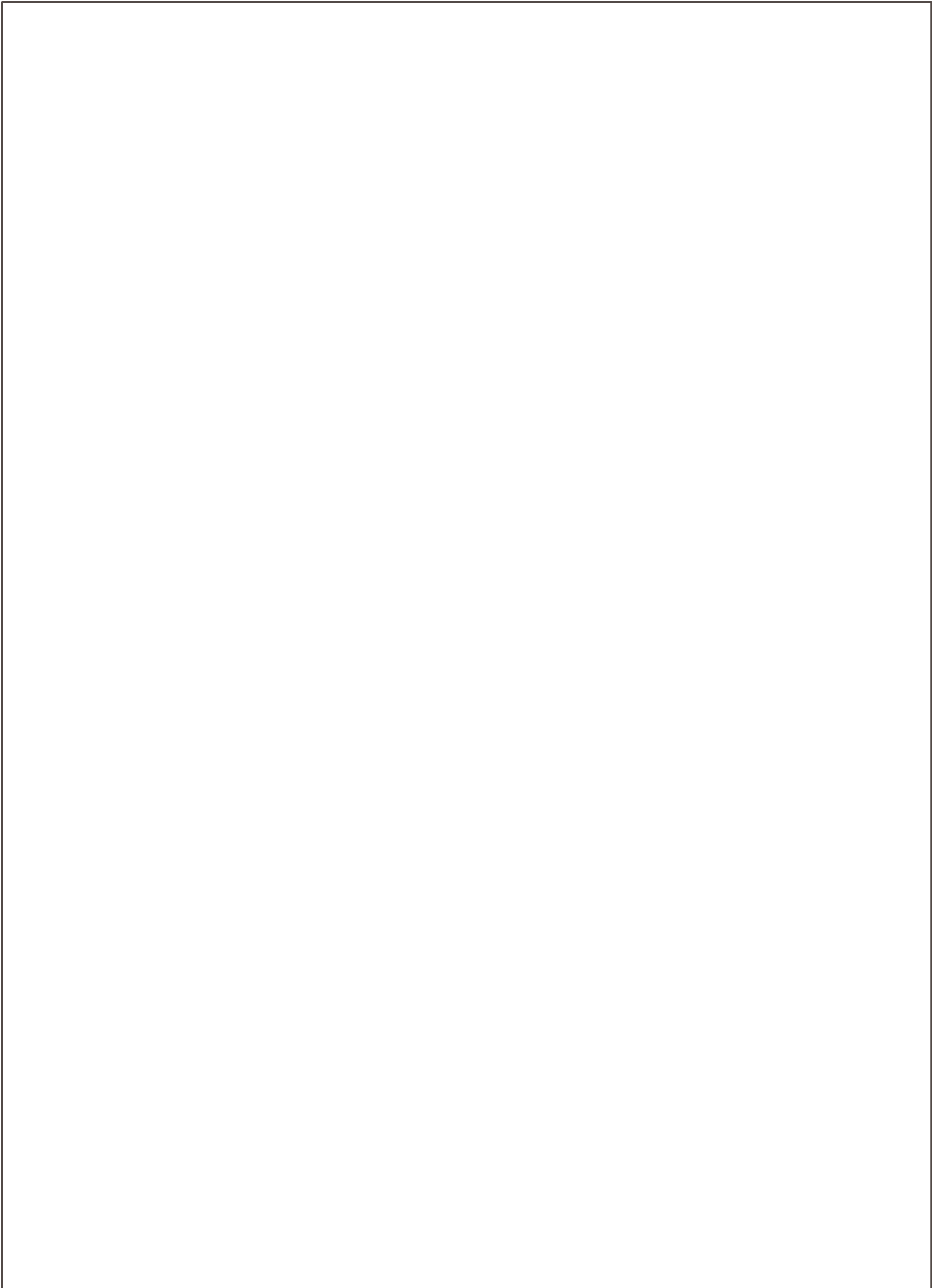
J



xxx xx xx-xx =

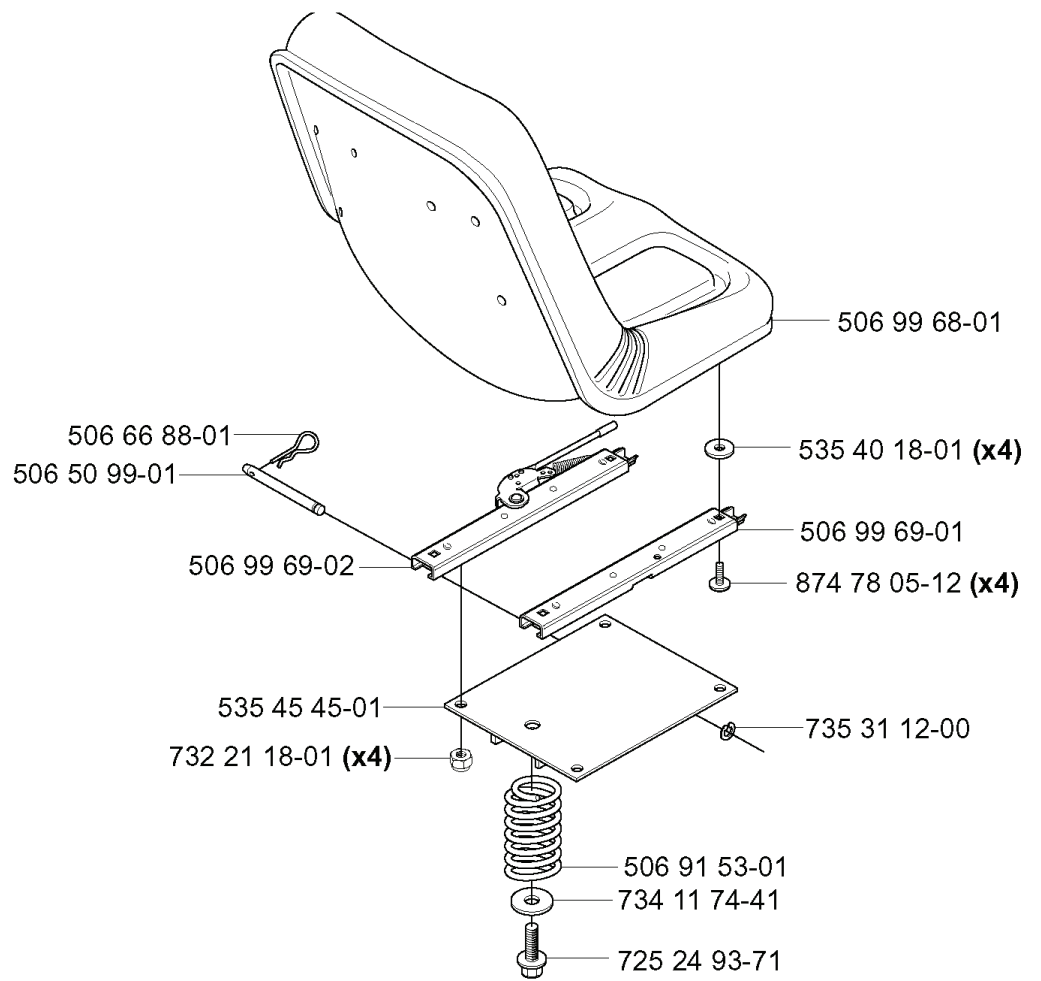
New part,
Neues teil,
Nouvelle piece,
Nueva pieza,
Ny detalj

| REF. | PART NO. | DESCRIPTION | REMARK | QTY. | KIT |
|--------------|-----------|----------------------|--------|------|-----|
| 506 50 62-02 | 506506202 | PEDAL RUBBER | | 1 | |
| 506 94 71-02 | 506947102 | BRAKE PEDAL ASSY | | 1 | |
| 506 99 27-01 | 506992701 | BRAKE WIRE | | 1 | |
| 506 53 56-03 | 506535603 | DRAW SPRING | | 1 | |
| 506 55 73-01 | 506557301 | VINKELLAS8 DIN7 1802 | | 1 | |
| 506 82 72-02 | 506827202 | CONTROL CABLE | | 1 | |
| 735 31 09-20 | 735310920 | E-CLIP | | 1 | |
| 732 21 18-01 | 732211801 | LOCK NUT | | 1 | |
| 725 24 61-51 | 725246151 | SCREW EHHM | | 1 | |
| 725 24 62-51 | 725246251 | SCREW EHHM | | 1 | |
| 725 24 57-51 | 725245751 | SCREW | | 1 | |
| 506 57 01-04 | 506570104 | SCREW EHHFM | | 1 | |
| 506 96 53-01 | 506965301 | PEDAL PLATE | | 1 | |
| 506 50 65-01 | 506506501 | BEARING SUPPORT | | 1 | |
| 506 80 41-01 | 506804101 | PLATE | | 1 | |
| 506 95 41-01 | 506954101 | BEARING SUPPORT | | 1 | |
| 734 11 64-01 | 734116401 | WASHER | | 1 | |
| 738 21 02-04 | 738210204 | BALL BEARING | | 1 | |
| 725 24 53-51 | 725245351 | SCREW EHHM | | 1 | |
| 535 45 95-01 | 535459501 | SPRING | | 1 | |
| 506 94 63-01 | 506946301 | BRAKE SPRING | | 1 | |
| 535 45 93-01 | 535459301 | REVERSE PEDAL | | 1 | |
| 535 47 37-01 | 535473701 | KNOB | | 1 | |
| 535 45 96-01 | 535459601 | PLATE | | 1 | |
| 535 45 99-01 | 535459901 | ROLLER | | 1 | |
| 506 50 62-01 | 506506201 | PEDAL RUBBER | | 1 | |
| 535 45 89-01 | 535458901 | HST-PEDAL M.FOTPL. | | 1 | |
| 732 21 14-01 | 732211401 | LOCK NUT | | 1 | |



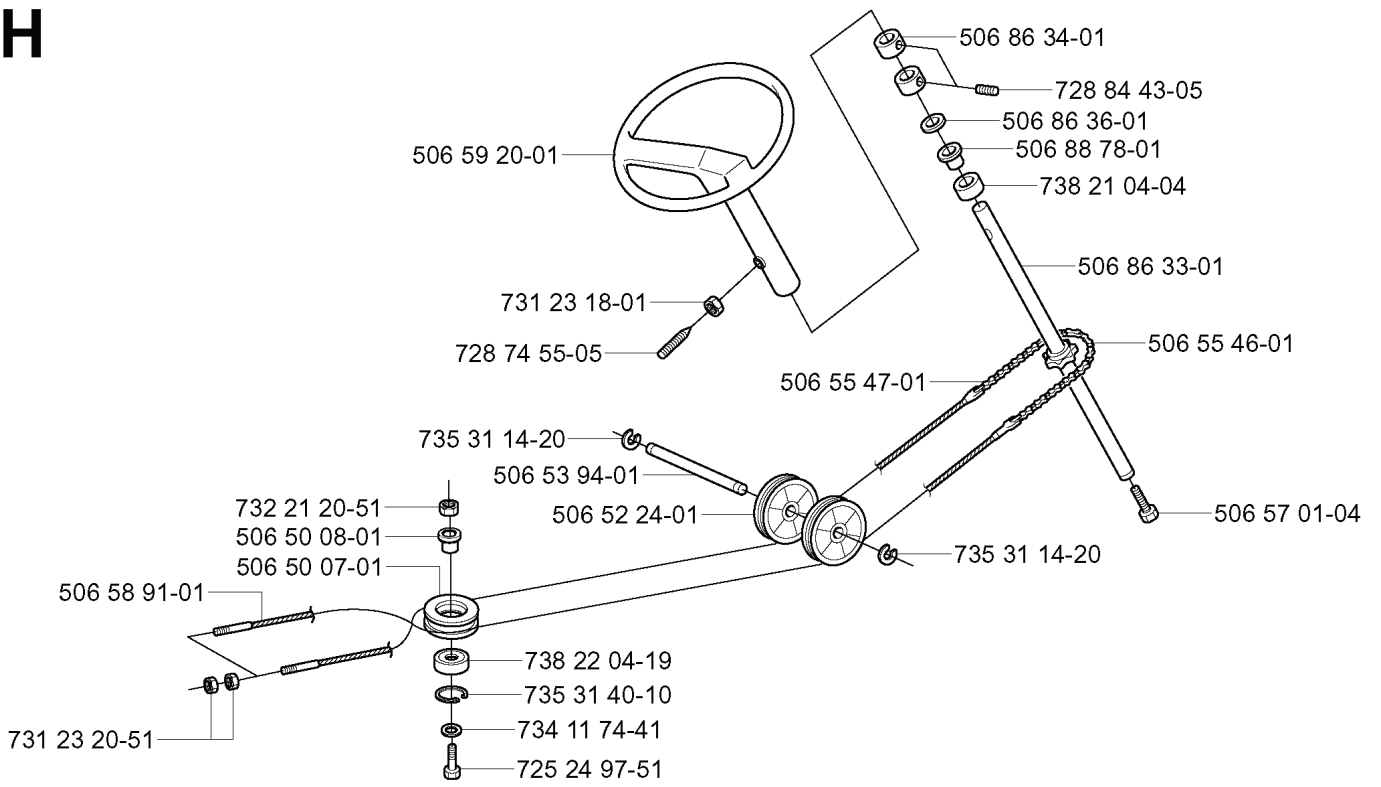
| REF. | PART NO. | DESCRIPTION | REMARK | QTY. | KIT |
|--------------|-----------|----------------------|--------|------|-----|
| 506 81 38-01 | 506813801 | REINFORCING PLATE | | 1 | |
| 535 43 12-01 | 535431201 | REAR CROSS TUBES ASS | | 1 | |
| 535 41 23-01 | 535412301 | PROTECTIVE TUBING | | 1 | |
| 732 21 18-01 | 732211801 | LOCK NUT | | 1 | |
| 725 24 61-51 | 725246151 | SCREW EHHM | | 1 | |
| 506 98 00-01 | 506980001 | SHAFT | | 1 | |
| 506 97 96-01 | 506979601 | WHEEL | | 1 | |
| 535 46 41-01 | 535464101 | WASHER | | 2 | |
| 735 31 15-20 | 735311520 | E-CLIP | | 1 | |
| 734 11 77-71 | 734117771 | WASHER | | 1 | |
| 734 11 56-01 | 734115601 | WASHER | | 1 | |
| 732 21 16-01 | 732211601 | LOCK NUT | | 1 | |
| 535 46 36-01 | 535463601 | PROTECTIVE TUBING | | 1 | |
| 506 97 91-01 | 506979101 | SERVICEBRICKA | | 1 | |
| 725 24 62-51 | 725246251 | SCREW EHHM | | 1 | |
| 506 86 96-01 | 506869601 | BEARING | | 1 | |
| 732 21 20-51 | 732212051 | NUT | | 1 | |
| 506 81 49-06 | 506814906 | ROD | | 1 | |
| 506 78 99-01 | 506789901 | VINKELLÄNK DIN 71802 | | 1 | |
| 506 92 46-02 | 506924602 | FRÄMRE TVÄRRÖR KPL. | | 1 | |
| 734 11 82-01 | 734118201 | WASHER | | 1 | |
| 506 96 30-01 | 506963001 | WHEEL ASSY | | 1 | |
| 735 31 17-00 | 735311700 | CIRCLIP | | 1 | |
| 506 59 74-01 | 506597401 | SCREW EHHFM | | 1 | |
| 535 47 63-01 | 535476301 | SIDE RAIL | | 1 | |
| 727 63 83-01 | 727638301 | SCREW RSQM | | 1 | |
| 506 94 13-06 | 506941306 | CONNECTION ROD | | 1 | |
| 535 46 87-01 | 535468701 | REAR CROSS TUBES ASS | | 1 | |
| 506 53 56-03 | 506535603 | DRAW SPRING | | 1 | |
| 506 89 76-01 | 506897601 | NUT | | 1 | |
| 725 24 95-71 | 725249571 | SCREW EHHM | | 1 | |
| 506 95 17-01 | 506951701 | ROD END | | 1 | |
| 535 46 88-01 | 535468801 | FRÄMRE TVÄRRÖR KPL. | | 1 | |

A



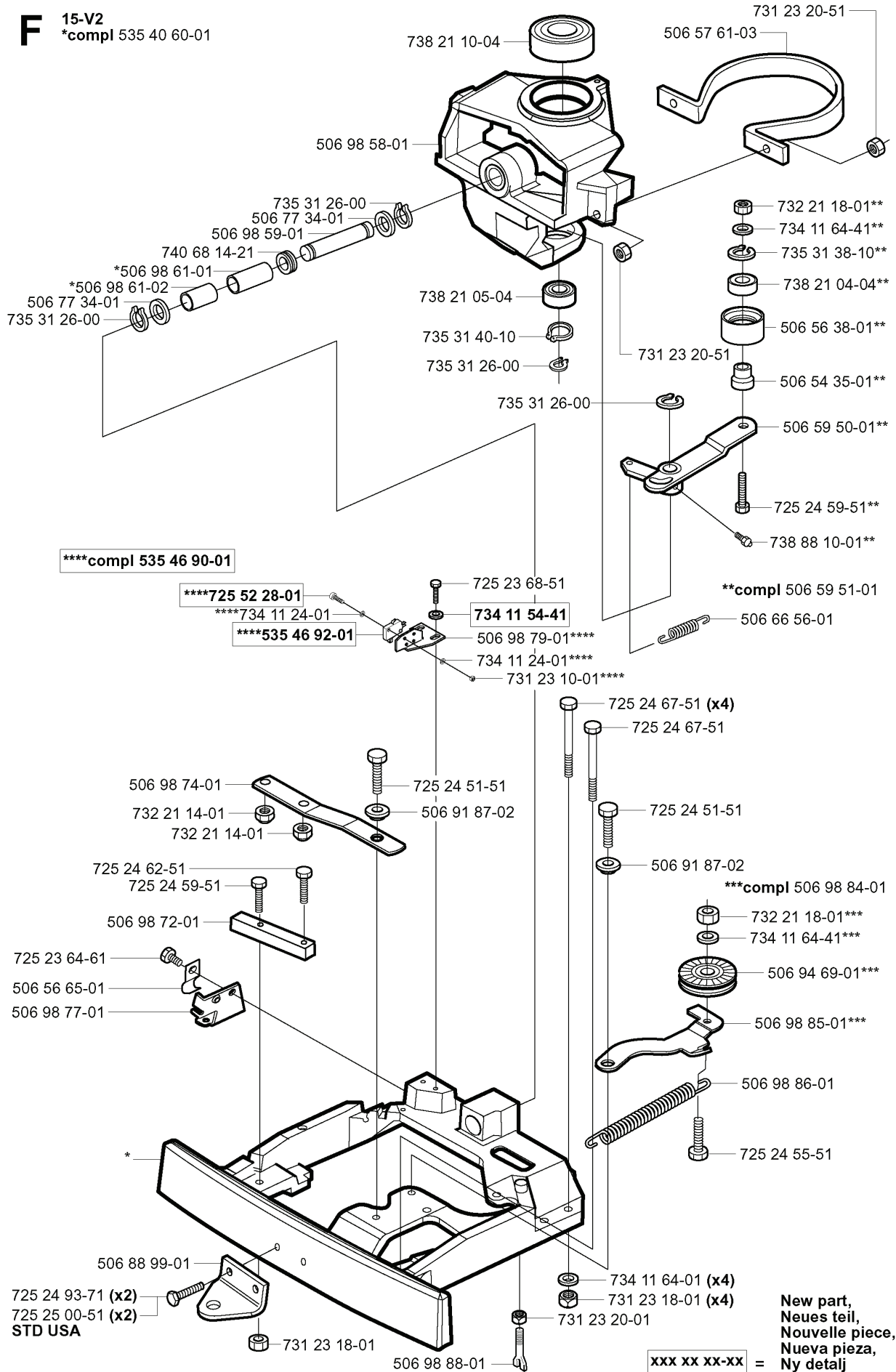
| REF. | PART NO. | DESCRIPTION | REMARK | QTY. | KIT |
|--------------|-----------|--------------------|--------|------|-----|
| 506 66 88-01 | 506668801 | SPRING COTTER | | 1 | |
| 506 50 99-01 | 506509901 | SHAFT | | 1 | |
| 506 99 69-02 | 506996902 | ADJUSTER | | 1 | |
| 535 45 45-01 | 535454501 | SEAT BRACKET ASSY | | 1 | |
| 732 21 18-01 | 732211801 | LOCK NUT | | 4 | |
| 725 24 93-71 | 725249371 | SCREW EHHM | | 1 | |
| 734 11 74-41 | 734117441 | WASHER | | 1 | |
| 506 91 53-01 | 506915301 | COMPRESSION SPRING | | 1 | |
| 735 31 12-00 | 735311200 | CIRCLIP | | 1 | |
| 874 78 05-12 | 874780512 | SCREW | | 4 | |
| 506 99 69-01 | 506996901 | ADJUSTER | | 1 | |
| 535 40 18-01 | 535401801 | SPACER | | 4 | |
| 506 99 68-01 | 506996801 | SEAT | | 1 | |

H



| REF. | PART NO. | DESCRIPTION | REMARK | QTY. | KIT |
|--------------|-----------|-------------------|--------|------|-----|
| 506 59 20-01 | 506592001 | STEERING WHEEL | | 1 | |
| 731 23 18-01 | 731231801 | HEXAGON NUT | | 1 | |
| 728 74 55-05 | 728745505 | SCREW IHSETM | | 1 | |
| 506 53 94-01 | 506539401 | SHAFT | | 1 | |
| 506 52 24-01 | 506522401 | STARTER PULLEY | | 1 | |
| 732 21 20-51 | 732212051 | NUT | | 1 | |
| 506 50 08-01 | 506500801 | BUSHING | | 1 | |
| 506 50 07-01 | 506500701 | BARRING WHEEL | | 1 | |
| 506 58 91-01 | 506589101 | WIRE ASSY | | 1 | |
| 731 23 20-51 | 731232051 | HEXAGON NUT | | 1 | |
| 738 22 04-19 | 738220419 | BALL BEARING | | 1 | |
| 735 31 40-10 | 735314010 | CIRCLIP | | 1 | |
| 734 11 74-41 | 734117441 | WASHER | | 1 | |
| 725 24 97-51 | 725249751 | SCREW | | 1 | |
| 735 31 14-20 | 735311420 | E-CLIP | | 1 | |
| 506 55 47-01 | 506554701 | LINKAGE | | 1 | |
| 506 57 01-04 | 506570104 | SCREW EHHFM | | 1 | |
| 506 55 46-01 | 506554601 | CHAIN | | 1 | |
| 506 86 33-01 | 506863301 | ROD STEERING ASSY | | 1 | |
| 738 21 04-04 | 738210404 | BALL BEARING | | 1 | |
| 506 88 78-01 | 506887801 | SPACER | | 1 | |
| 506 86 36-01 | 506863601 | WASHER | | 1 | |
| 728 84 43-05 | 728844305 | SCREW IHSETM | | 1 | |
| 506 86 34-01 | 506863401 | DRIVER | | 1 | |

F 15-V2
*compl 535 40 60-01



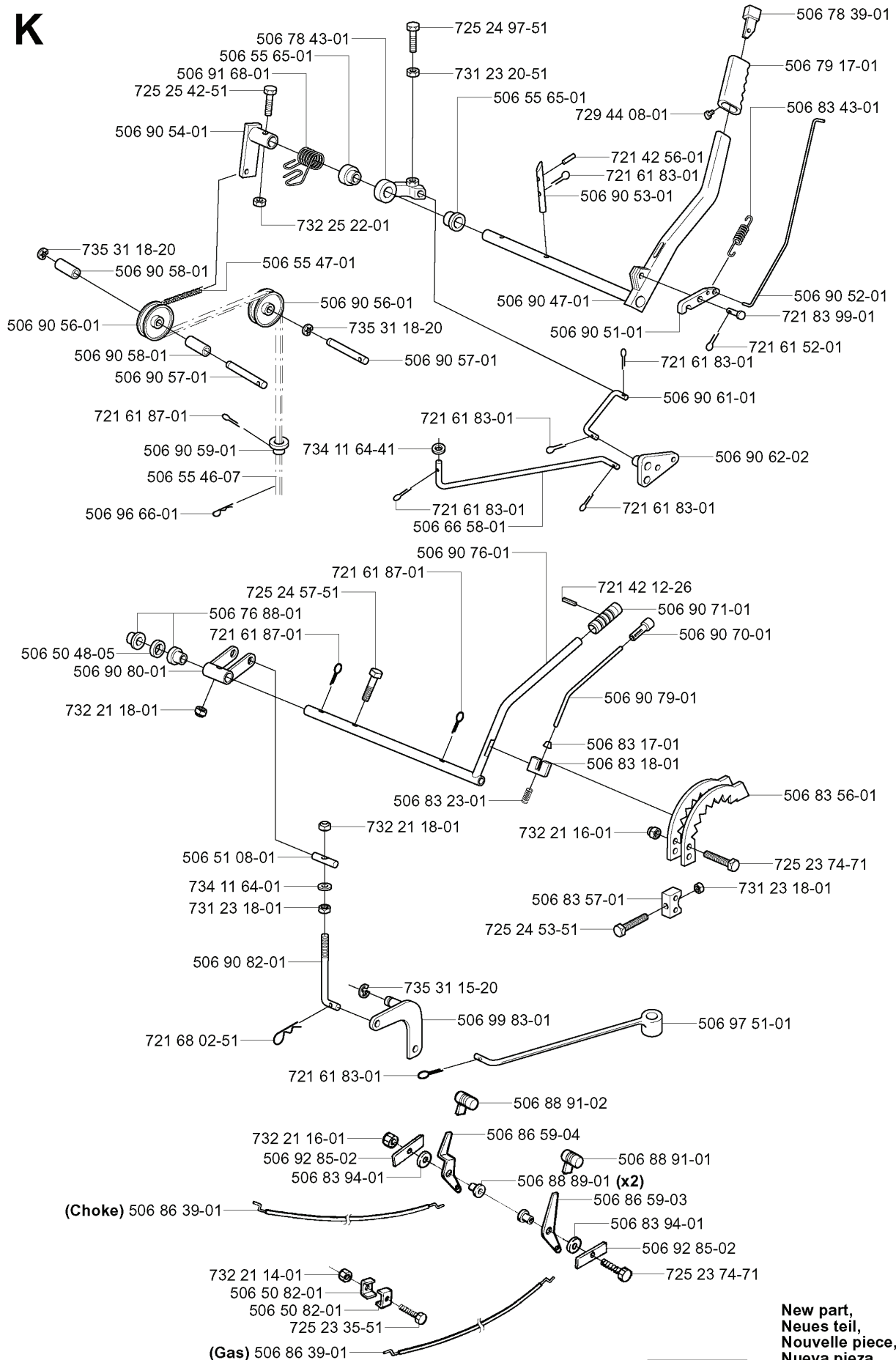
New part,
Neues teil,
Nouvelle piece,
Nueva pieza,
Ny detalj

xxx xx xx-xx =

| REF. | PART NO. | DESCRIPTION | REMARK | QTY. | KIT |
|--------------|-----------|----------------|---------|------|-----|
| 535 40 60-01 | 535406001 | BRACKET | | 1 | |
| 738 21 10-04 | 738211004 | BALL BEARING | | 1 | |
| 506 98 58-01 | 506985801 | SPINDLE | | 1 | |
| 506 98 59-01 | 506985901 | SWING AXLE | | 1 | |
| 740 68 14-21 | 740681421 | V-RING | | 1 | |
| 506 98 61-01 | 506986101 | GLIDLAGER | | 1 | |
| 506 98 61-02 | 506986102 | GLIDLAGER | | 1 | |
| 506 77 34-01 | 506773401 | WASHER | | 1 | |
| 535 46 90-01 | 535469001 | SWITCH | | 1 | |
| 725 52 28-01 | 725522801 | SCREW IHSCM | | 1 | |
| 535 46 92-01 | 535469201 | SWITCH | | 1 | |
| 506 98 74-01 | 506987401 | LEVER | | 1 | |
| 732 21 14-01 | 732211401 | LOCK NUT | | 1 | |
| 725 24 62-51 | 725246251 | SCREW EHHM | | 1 | |
| 506 98 72-01 | 506987201 | MOMENTFÄSTE | | 1 | |
| 725 23 64-61 | 725236461 | SCREW EHHFT | | 1 | |
| 506 56 65-01 | 506566501 | CLIP | | 1 | |
| 506 98 77-01 | 506987701 | BRACKET | | 1 | |
| 506 88 99-01 | 506889901 | HITCH | | 1 | |
| 725 24 93-71 | 725249371 | SCREW EHHM | | 2 | |
| 725 25 00-51 | 725250051 | SCREW EHHM | STD USA | 2 | |
| 731 23 18-01 | 731231801 | HEXAGON NUT | | 1 | |
| 506 98 88-01 | 506988801 | PENDULUM | | 1 | |
| 506 91 87-02 | 506918702 | WASHER | | 1 | |
| 725 24 51-51 | 725245151 | SCREW | | 1 | |
| 735 31 40-10 | 735314010 | CIRCLIP | | 1 | |
| 738 21 05-04 | 738210504 | BALL BEARING | | 1 | |
| 735 31 26-00 | 735312600 | CIRCLIP | | 1 | |
| 725 23 68-51 | 725236851 | SCREW | | 1 | |
| 734 11 54-41 | 734115441 | WASHER | | 1 | |
| 506 98 79-01 | 506987901 | BRACKET | | 1 | |
| 734 11 24-01 | 734112401 | WASHER | | 1 | |
| 731 23 10-01 | 731231001 | HEXAGON NUT | | 1 | |
| 725 24 67-51 | 725246751 | SCREW EHHM | | 1 | |
| 734 11 64-01 | 734116401 | WASHER | | 4 | |
| 731 23 20-01 | 731232001 | HEXAGON NUT | | 1 | |
| 725 24 55-51 | 725245551 | SCREW | | 1 | |
| 506 98 86-01 | 506988601 | SPRING | | 1 | |
| 506 98 85-01 | 506988501 | BELT TENSIONER | | 1 | |
| 506 94 69-01 | 506946901 | PULLEY | | 1 | |
| 734 11 64-41 | 734116441 | WASHER | | 1 | |

| REF. | PART NO. | DESCRIPTION | REMARK | QTY. | KIT |
|--------------|-----------|---------------------|--------|------|-----|
| 732 21 18-01 | 732211801 | LOCK NUT | | 1 | |
| 506 98 84-01 | 506988401 | BELT TENSIONER ASSY | | 1 | |
| 506 66 56-01 | 506665601 | SPRING | | 1 | |
| 506 59 51-01 | 506595101 | REMSP. KNIVDRIVNING | | 1 | |
| 738 88 10-01 | 738881001 | LUBRICATION NIPPLE | | 1 | |
| 725 24 59-51 | 725245951 | SCREW EHHM | | 1 | |
| 506 59 50-01 | 506595001 | LEVER | | 1 | |
| 506 54 35-01 | 506543501 | BUSHING | | 1 | |
| 506 56 38-01 | 506563801 | TENSION ROLLER | | 1 | |
| 738 21 04-04 | 738210404 | BALL BEARING | | 1 | |
| 735 31 38-10 | 735313810 | CIRCLIP | | 1 | |
| 506 57 61-03 | 506576103 | STYRKANS | | 1 | |
| 731 23 20-51 | 731232051 | HEXAGON NUT | | 1 | |

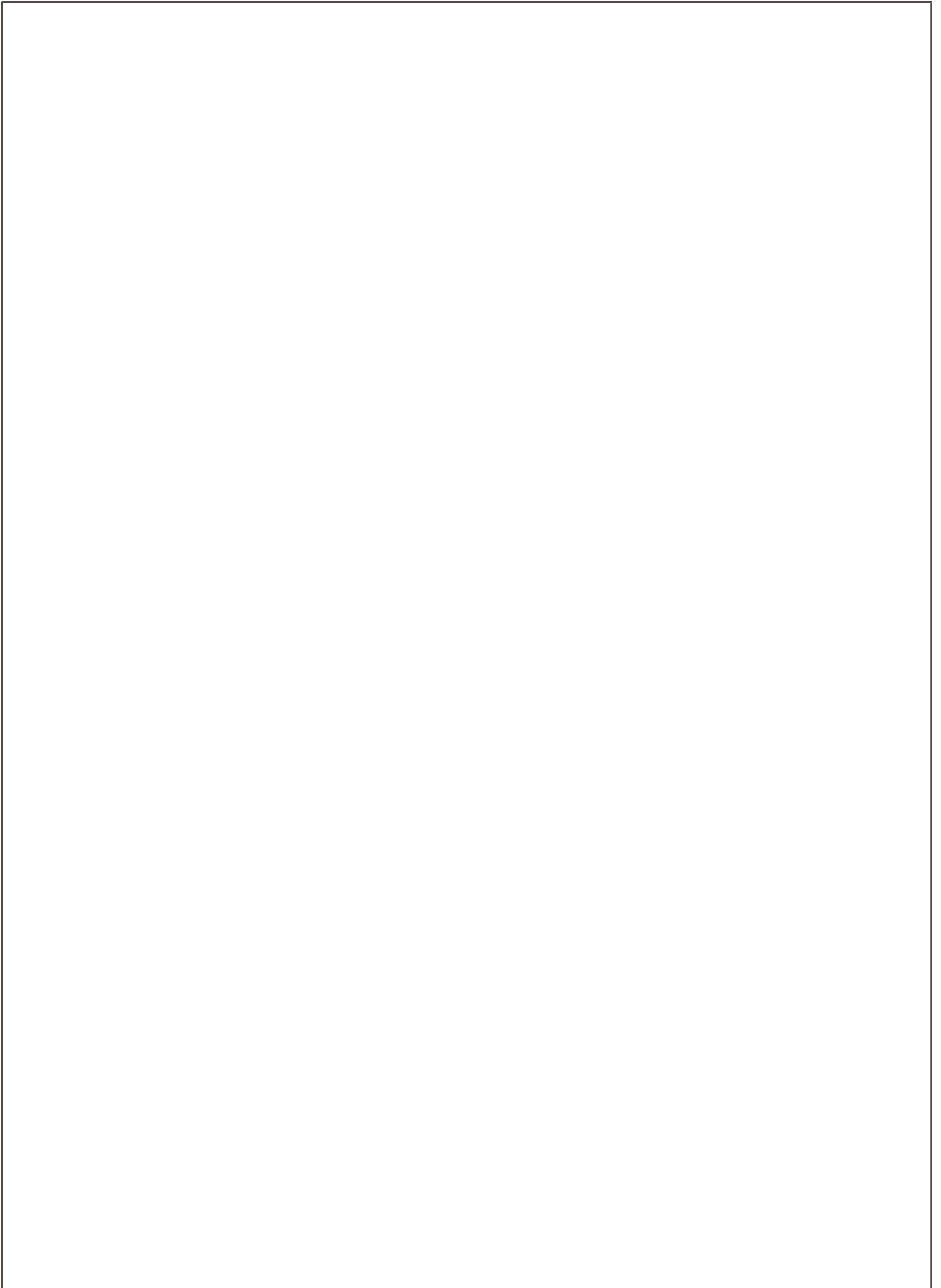
K



xxx xx xx-xx = New part,
Neues teil,
Nouvelle piece,
Nueva pieza,
Ny detalj

| REF. | PART NO. | DESCRIPTION | REMARK | QTY. | KIT |
|--------------|-----------|---------------------|--------|------|-----|
| 506 78 43-01 | 506784301 | LINK ASSY | | 1 | |
| 506 55 65-01 | 506556501 | BEARING | | 1 | |
| 506 91 68-01 | 506916801 | SPRING | | 1 | |
| 725 25 42-51 | 725254251 | SCREW EHHM | | 1 | |
| 506 90 54-01 | 506905401 | LIFTING ARM | | 1 | |
| 735 31 18-20 | 735311820 | E-CLIP | | 1 | |
| 506 90 58-01 | 506905801 | TUBE SLEEVE | | 1 | |
| 506 90 57-01 | 506905701 | SHAFT | | 1 | |
| 506 90 59-01 | 506905901 | CHAIN STOP | | 1 | |
| 506 55 46-07 | 506554607 | CHAIN | | 1 | |
| 506 96 66-01 | 506966601 | HAIR PIN COTTER | | 1 | |
| 506 50 48-05 | 506504805 | WASHER | | 1 | |
| 506 90 80-01 | 506908001 | LEVER | | 1 | |
| 506 51 08-01 | 506510801 | NIPPLE | | 1 | |
| 734 11 64-01 | 734116401 | WASHER | | 1 | |
| 506 90 82-01 | 506908201 | HEIGHT ROD | | 1 | |
| 721 68 02-51 | 721680251 | SPRING COTTER | | 1 | |
| 506 86 39-01 | 506863901 | THROTTLE CABLE ASSY | CHOKE | 1 | |
| 732 21 14-01 | 732211401 | LOCK NUT | | 1 | |
| 506 50 82-01 | 506508201 | CLIP | | 1 | |
| 725 23 35-51 | 725233551 | SCREW EHHM | | 1 | |
| 732 21 16-01 | 732211601 | LOCK NUT | | 1 | |
| 732 21 18-01 | 732211801 | LOCK NUT | | 1 | |
| 506 83 23-01 | 506832301 | SPRING | | 1 | |
| 506 76 88-01 | 506768801 | BUSHING | | 1 | |
| 725 24 57-51 | 725245751 | SCREW | | 1 | |
| 721 61 87-01 | 721618701 | SPLIT PIN | | 1 | |
| 506 90 76-01 | 506907601 | LIFTING LEVER ASSY | | 1 | |
| 506 66 58-01 | 506665801 | CLUTCH ROD REAR | | 1 | |
| 721 61 83-01 | 721618301 | SPLIT PIN | | 1 | |
| 734 11 64-41 | 734116441 | WASHER | | 1 | |
| 506 90 56-01 | 506905601 | OFFSET PULLEY | | 1 | |
| 506 55 47-01 | 506554701 | LINKAGE | | 1 | |
| 732 25 22-01 | 732252201 | HEXAGON LOCKING NUT | | 1 | |
| 731 23 20-51 | 731232051 | HEXAGON NUT | | 1 | |
| 725 24 97-51 | 725249751 | SCREW | | 1 | |
| 729 44 08-01 | 729440801 | SCREW SLCSRT | | 1 | |
| 721 42 56-01 | 721425601 | SPRING PIN | | 1 | |
| 506 90 53-01 | 506905301 | PEN | | 1 | |
| 506 90 47-01 | 506904701 | LIFT LEVER CMPL | | 1 | |
| 506 90 51-01 | 506905101 | CATCH | | 1 | |

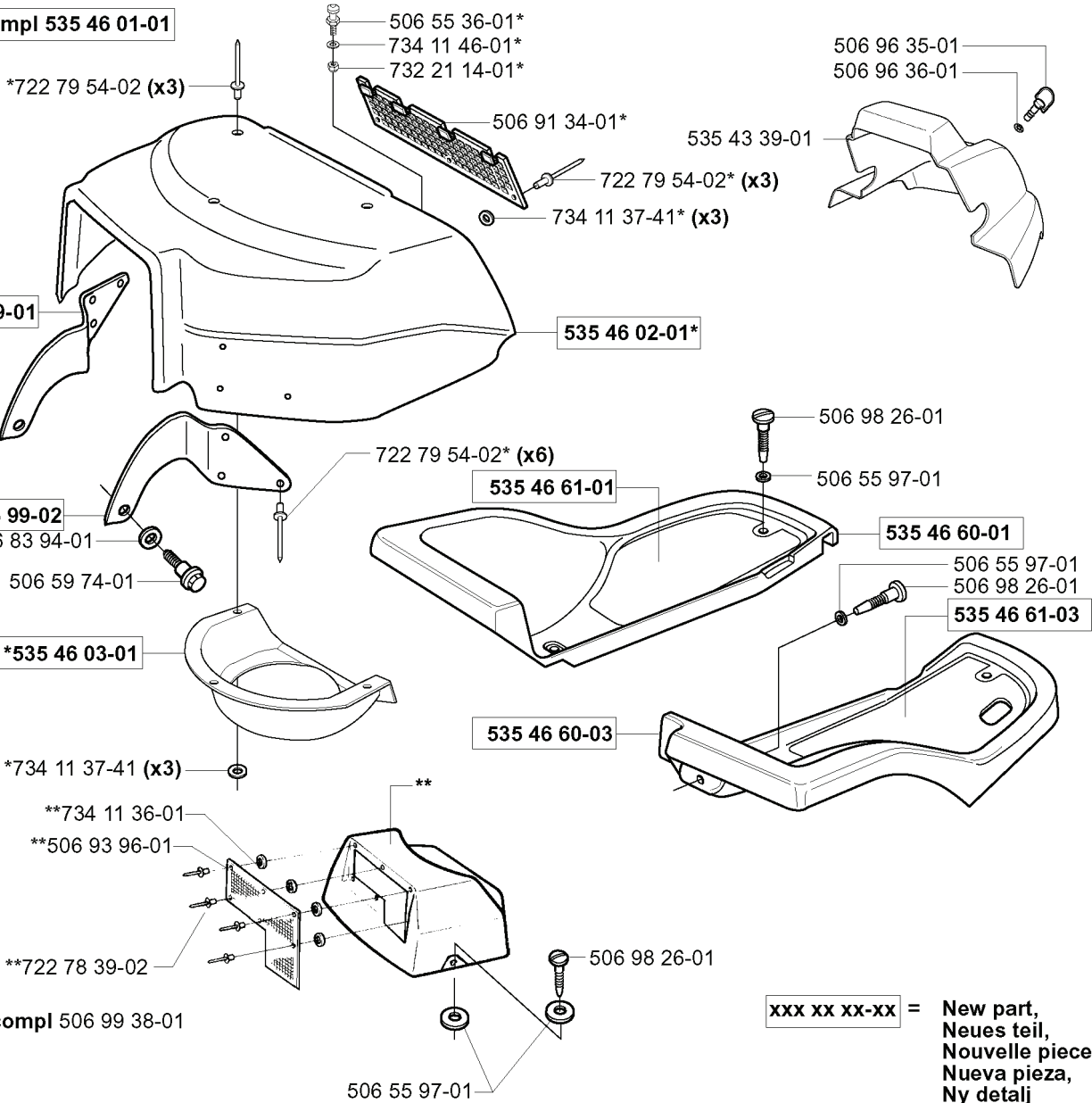
| REF. | PART NO. | DESCRIPTION | REMARK | QTY. | KIT |
|--------------|-----------|----------------|--------|------|-----|
| 506 83 57-01 | 506835701 | BRACKET | | 1 | |
| 725 24 53-51 | 725245351 | SCREW EHHM | | 1 | |
| 735 31 15-20 | 735311520 | E-CLIP | | 1 | |
| 506 99 83-01 | 506998301 | LINK ASSY | | 1 | |
| 506 88 91-02 | 506889102 | KNOB | | 1 | |
| 506 86 59-04 | 506865904 | CONTROL | | 1 | |
| 506 88 89-01 | 506888901 | BUSHING | | 2 | |
| 506 86 59-03 | 506865903 | CONTROL | | 1 | |
| 506 83 94-01 | 506839401 | SPRING WASHER | | 1 | |
| 506 92 85-02 | 506928502 | LOCKWASHER | | 1 | |
| 725 23 74-71 | 725237471 | SCREW EHHM | | 1 | |
| 506 88 91-01 | 506889101 | KNOB | | 1 | |
| 506 97 51-01 | 506975101 | CONNECTOR | | 1 | |
| 731 23 18-01 | 731231801 | HEXAGON NUT | | 1 | |
| 506 83 56-01 | 506835601 | HÖJDSEGMET | | 1 | |
| 506 83 18-01 | 506831801 | LOCK | | 1 | |
| 506 83 17-01 | 506831701 | END FITTING | | 1 | |
| 506 90 79-01 | 506907901 | PUSH ROD | | 1 | |
| 506 90 70-01 | 506907001 | KNOB | | 1 | |
| 506 90 71-01 | 506907101 | HANDLE | | 1 | |
| 721 42 12-26 | 721421226 | SPRING PIN | | 1 | |
| 506 90 62-02 | 506906202 | LINK ASSY | | 1 | |
| 506 90 61-01 | 506906101 | CONNECTION ROD | | 1 | |
| 721 61 52-01 | 721615201 | SPLIT PIN | | 1 | |
| 721 83 99-01 | 721839901 | CLEVIS PIN | | 1 | |
| 506 90 52-01 | 506905201 | PUSH ROD | | 1 | |
| 506 83 43-01 | 506834301 | SPRING | | 1 | |
| 506 79 17-01 | 506791701 | HANDLE | | 1 | |
| 506 78 39-01 | 506783901 | BUTTON | | 1 | |



| REF. | PART NO. | DESCRIPTION | REMARK | QTY. | KIT |
|--------------|-----------|----------------------|---------------|------|-----|
| 725 25 36-71 | 725253671 | SCREW EHHM | COMBI 103/112 | 1 | |
| 725 24 57-51 | 725245751 | SCREW | | 1 | |
| 734 11 64-41 | 734116441 | WASHER | | 1 | |
| 725 24 95-71 | 725249571 | SCREW EHHM | | 1 | |
| 506 98 25-01 | 506982501 | WASHER | | 1 | |
| 506 59 75-01 | 506597501 | WASHER | | 1 | |
| 506 97 63-01 | 506976301 | SPÄNNARM | | 1 | |
| 506 97 68-01 | 506976801 | SPRING | | 1 | |
| 732 21 20-51 | 732212051 | NUT | | 1 | |
| 732 25 22-01 | 732252201 | HEXAGON LOCKING NUT | COMBI 103/112 | 1 | |
| 506 83 76-01 | 506837601 | SPRING | | 1 | |
| 506 89 58-01 | 506895801 | COLLAR SCREW | | 1 | |
| 506 83 77-01 | 506837701 | RING BOLT | | 1 | |
| 734 11 72-01 | 734117201 | WASHER | | 1 | |
| 731 23 20-51 | 731232051 | HEXAGON NUT | | 1 | |
| 506 97 48-01 | 506974801 | PULLEY | | 1 | |
| 506 82 68-01 | 506826801 | BUSHING | | 1 | |
| 506 97 50-01 | 506975001 | BELT GUIDE | | 1 | |
| 725 24 61-51 | 725246151 | SCREW EHHM | | 1 | |
| 506 53 27-01 | 506532701 | PULLEY | | 1 | |
| 725 25 42-51 | 725254251 | SCREW EHHM | COMBI 103/112 | 1 | |
| 535 43 13-01 | 535431301 | LÄNKRÖRRSINFÄSTN.KPL | COMBI 103/112 | 1 | |
| 506 59 74-01 | 506597401 | SCREW EHHFM | COMBI 103/112 | 2 | |
| 732 21 18-01 | 732211801 | LOCK NUT | COMBI 103/112 | 2 | |
| 506 97 46-01 | 506974601 | PEN | | 1 | |
| 506 99 79-01 | 506997901 | LINK ASSY | | 1 | |
| 721 86 17-01 | 721861701 | CLEVIS PIN | | 1 | |
| 735 31 15-20 | 735311520 | E-CLIP | | 1 | |
| 734 11 77-71 | 734117771 | WASHER | | 1 | |
| 506 97 96-01 | 506979601 | WHEEL | | 1 | |
| 506 98 00-01 | 506980001 | SHAFT | | 1 | |
| 535 47 10-01 | 535471001 | DECK ATTACHMENT ASSY | | 1 | |
| 721 68 02-51 | 721680251 | SPRING COTTER | | 1 | |
| 506 96 37-01 | 506963701 | LÅSDON | | 1 | |
| 506 98 28-01 | 506982801 | BRACKET | | 1 | |
| 722 78 39-02 | 722783902 | BLIND RIVET | | 1 | |

B

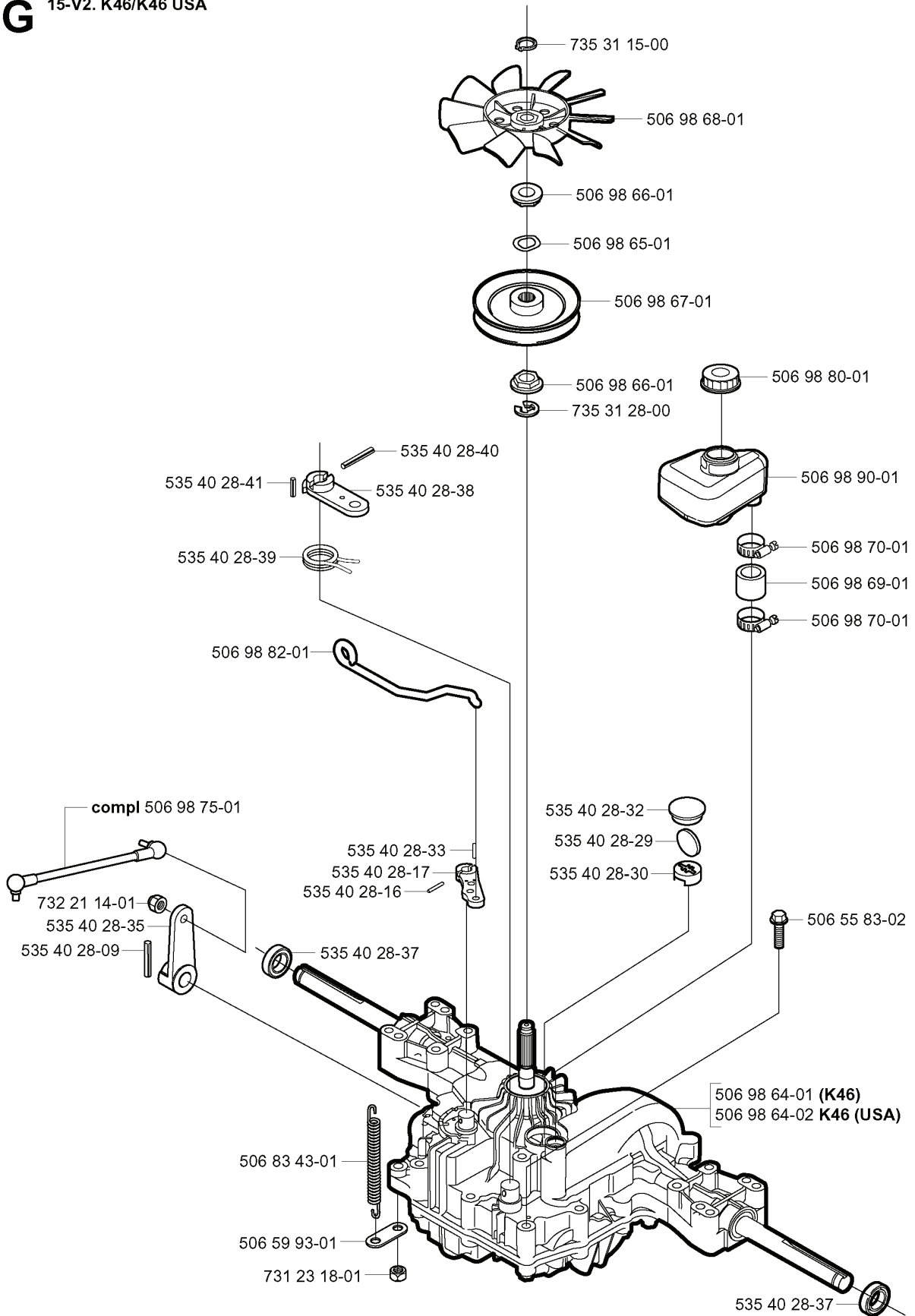
***compl 535 46 01-01**



**xxx xx xx-xx = New part,
Neues teil,
Nouvelle piece,
Nueva pieza,
Ny detalj**

| REF. | PART NO. | DESCRIPTION | REMARK | QTY. | KIT |
|--------------|-----------|------------------|--------|------|-----|
| 535 46 01-01 | 535460101 | ENGINE HOOD ASSY | | 1 | |
| 535 46 99-01 | 535469901 | PIVOT LEFT | | 1 | |
| 535 46 99-02 | 535469902 | HINGE | | 1 | |
| 506 83 94-01 | 506839401 | SPRING WASHER | | 1 | |
| 506 59 74-01 | 506597401 | SCREW EHHFM | | 1 | |
| 535 46 03-01 | 535460301 | AIR CONDUCTOR | | 1 | |
| 734 11 37-41 | 734113741 | WASHER | | 3 | |
| 734 11 36-01 | 734113601 | WASHER | | 1 | |
| 506 93 96-01 | 506939601 | SCREEN | | 1 | |
| 722 78 39-02 | 722783902 | BLIND RIVET | | 1 | |
| 506 99 38-01 | 506993801 | COVER | | 1 | |
| 535 46 60-03 | 535466003 | FLYGEL HÖ. HST | | 1 | |
| 535 46 61-01 | 535466101 | MAT | | 1 | |
| 722 79 54-02 | 722795402 | RIVET | | 6 | |
| 535 46 02-01 | 535460201 | MOTOR COVER | | 1 | |
| 506 91 34-01 | 506913401 | AIR GRIND | | 1 | |
| 732 21 14-01 | 732211401 | LOCK NUT | | 1 | |
| 734 11 46-01 | 734114601 | WASHER | | 1 | |
| 506 55 36-01 | 506553601 | KNOB | | 1 | |
| 535 43 39-01 | 535433901 | COVER | | 1 | |
| 535 46 61-03 | 535466103 | MAT | | 1 | |
| 535 46 60-01 | 535466001 | FLYGEL VÄ. | | 1 | |
| 506 55 97-01 | 506559701 | WASHER | | 1 | |
| 506 98 26-01 | 506982601 | SCREW | | 1 | |
| 506 96 36-01 | 506963601 | WASHER | | 1 | |
| 506 96 35-01 | 506963501 | VRIDTAPP | | 1 | |

G 15-V2. K46/K46 USA



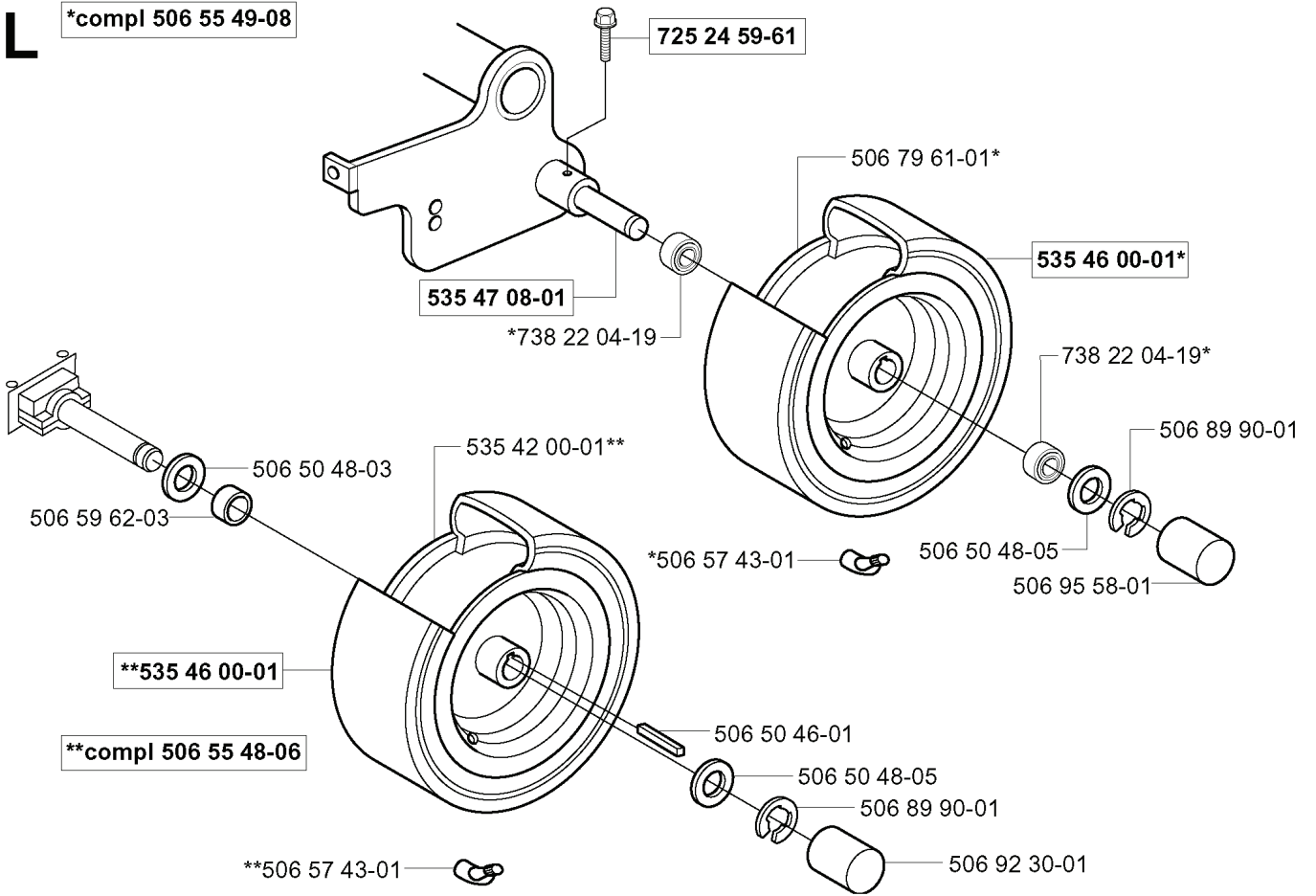
New part,
Neues teil,
Nouvelle piece,
Nueva pieza,
Ny detalj

xxx xx xx-xx =

| REF. | PART NO. | DESCRIPTION | REMARK | QTY. | KIT |
|--------------|-----------|---------------------|-----------|------|-----|
| 535 40 28-40 | 535402840 | PIN RETAINING SCREW | | 1 | |
| 535 40 28-38 | 535402838 | LEVER | | 1 | |
| 535 40 28-41 | 535402841 | PIN | | 1 | |
| 535 40 28-39 | 535402839 | SPRING | | 1 | |
| 506 98 82-01 | 506988201 | FRIKOPPLINGSSTÅNG | | 1 | |
| 506 98 75-01 | 506987501 | ADJUSTMENT ROD | | 1 | |
| 732 21 14-01 | 732211401 | LOCK NUT | | 1 | |
| 535 40 28-35 | 535402835 | LEVER | | 1 | |
| 535 40 28-09 | 535402809 | PIN RETAINING SCREW | | 1 | |
| 535 40 28-33 | 535402833 | PIN RETAINING SCREW | | 1 | |
| 535 40 28-17 | 535402817 | LEVER | | 1 | |
| 535 40 28-16 | 535402816 | PIN RETAINING SCREW | | 1 | |
| 535 40 28-37 | 535402837 | SEALING | | 1 | |
| 506 83 43-01 | 506834301 | SPRING | | 1 | |
| 506 59 93-01 | 506599301 | LINK | | 1 | |
| 731 23 18-01 | 731231801 | HEXAGON NUT | | 1 | |
| 506 98 64-02 | 506986402 | TRANSMISSION | K46 (USA) | 1 | |
| 506 98 64-01 | 506986401 | TRANSMISSION | K46 | 1 | |
| 506 55 83-02 | 506558302 | SCREW EHHFT | | 1 | |
| 535 40 28-30 | 535402830 | HOLDER | | 1 | |
| 535 40 28-29 | 535402829 | MAGNET | | 1 | |
| 535 40 28-32 | 535402832 | PLUG | | 1 | |
| 506 98 70-01 | 506987001 | HOSE CLAMP | | 1 | |
| 506 98 69-01 | 506986901 | HOSE | | 1 | |
| 506 98 90-01 | 506989001 | EXPANSION TANK | | 1 | |
| 506 98 80-01 | 506988001 | TANK CAP ASSY | | 1 | |
| 735 31 28-00 | 735312800 | CIRCLIP | | 1 | |
| 506 98 67-01 | 506986701 | PULLEY | | 1 | |
| 506 98 65-01 | 506986501 | SPRING WASHER | | 1 | |
| 506 98 66-01 | 506986601 | DISTANCE | | 1 | |
| 506 98 68-01 | 506986801 | FAN | | 1 | |
| 735 31 15-00 | 735311500 | CIRCLIP | | 1 | |

L

*compl 506 55 49-08



| REF. | PART NO. | DESCRIPTION | REMARK | QTY. | KIT |
|--------------|-----------|-------------------|--------|------|-----|
| 506 55 49-08 | 506554908 | WHEEL | | 1 | |
| 506 50 48-03 | 506504803 | WASHER | | 1 | |
| 506 59 62-03 | 506596203 | SPACING SLEEVE | | 1 | |
| 535 46 00-01 | 535460001 | TYRE | | 1 | |
| 506 55 48-06 | 506554806 | REAR WHEEL | | 1 | |
| 535 42 00-01 | 535420001 | RIM | | 1 | |
| 738 22 04-19 | 738220419 | BALL BEARING | | 1 | |
| 535 47 08-01 | 535470801 | WHEEL AXLE | | 1 | |
| 725 24 59-61 | 725245961 | SCREW EHHFT | | 1 | |
| 506 57 43-01 | 506574301 | VALVE ASSY | | 1 | |
| 506 50 46-01 | 506504601 | WEDGE | | 1 | |
| 506 50 48-05 | 506504805 | WASHER | | 1 | |
| 506 92 30-01 | 506923001 | RUND FOT UKB 30 S | | 1 | |
| 506 95 58-01 | 506955801 | CUP | | 1 | |
| 506 89 90-01 | 506899001 | E-CLIP | | 1 | |
| 506 79 61-01 | 506796101 | RIM | | 1 | |