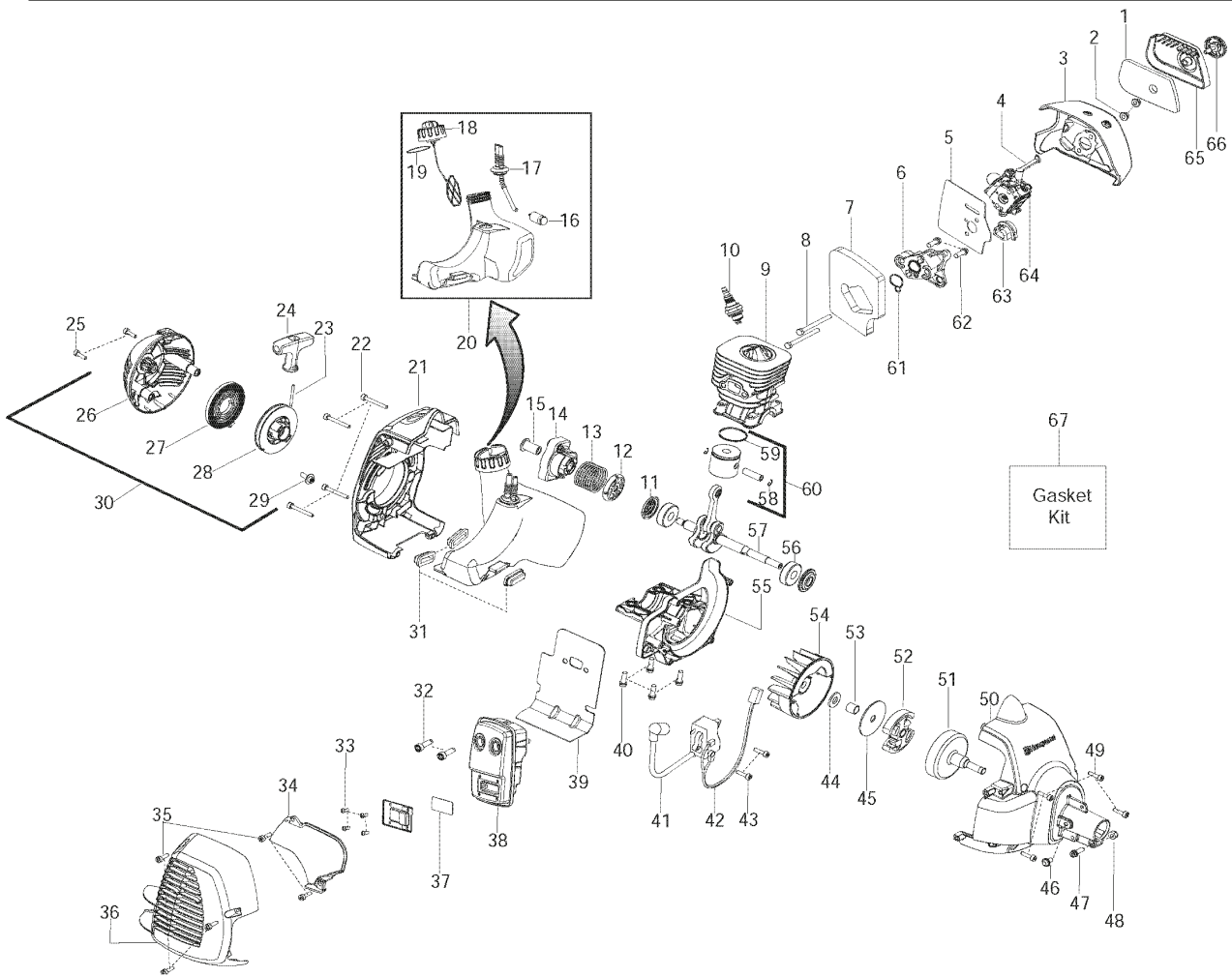


125 R, 20074000001-20082200000

---

# **SPARE PARTS LIST**

<b>Parts List No.</b> 545014340		<b>Husqvarna</b> ® PARTS LIST	<b>MODEL</b> 125R
<b>Date</b> 12/21/06	<b>Replaces</b> 545014340 - 11/21/06		<b>Page:</b> 2
<b>NOTE :</b> Illustration may differ from actual model due to design changes.			



REF.	PART NO.	DESCRIPTION	REMARK	QTY.	KIT
1	530150253	AIR FILTER		1	
2	530016101	NUT		1	
3	545084601	AIR BOX		1	
4	530057844	LEVER		1	
5	545050402	KIT		1	
6	530035596	ADAPTER		1	
7	545030101	GASKET		1	
8	530016400	BOLT		1	
9	545001001	CYLINDER		1	
10	952030201	SPARK PLUG		1	
11	545050403	KIT		1	
12	530016475	CARRIER		1	
13	530016450	RETURN SPRING		1	
14	545102302	STARTER PAWL ATTACHMENT		1	
15	530059800	SHAFT		1	
16	530095646	FILTER		1	
17	545030201	HOSE		1	
18	530150350	TANK		1	
19	530019293	O-RING		1	
20	545105102	FUEL TANK		1	
21	530057851	COVER		1	
22	530016448	SCREW		1	
23	545029901	STARTER ROPE		1	
24	530150318	HANDLE		1	
25	530016426	SCREW		1	
26	545029603	STARTER		1	
27	545029801	SPRING		1	
28	545029701	STARTER PULLEY		1	
29	530016468	SCREW		1	
30	545106301	STARTER ASSY		1	
31	530059780	INSULATOR		1	
32	530058982	BOLT		1	
33	530015496	SCREW		1	
34	530150440	PROTECTION		1	
35	530016449	SCREW		1	
36	545104901	PROTECTION		1	
37	545030501	SCREEN		1	
38	545057502	MUFFLER ASSY		1	
39	530057848	GASKET		1	
40	530015897	SCREW		1	
41	545046701	IGNITION MODULE		1	
42	530039227	SHORTING LEAD		1	
43	530016456	SCREW		1	
44	530016030	WASHER		1	
45	530094189	WASHER		1	
46	530016469	SCREW		1	
47	530016470	SCREW		1	
48	530403094	NUT		1	
49	530016456	SCREW		1	
50	545017501	HOUSING		1	
51	530150039	CLUTCH DRUM		1	
52	545050405	CLUTCH		1	
53	530057852	RING		1	
54	530039242	FLYWHEEL		1	
55	545054601	CRANKCASE		1	
56	545013401	BEARING		1	
57	545030001	CRANKSHAFT		1	
58	530015162	CIRCLIP		1	
59	530019283	PISTON RING		1	
60	545030301	PISTON		1	
61	545030101	GASKET		1	
62	530015897	SCREW		1	
63	545113201	GUIDE		1	
64	545006062	KIT		1	
65	530057846	COVER		1	
66	530059796	KNOB ASSY AIRBOX COVER		1	
67	545030101	GASKET		1	
-	530058709	BULB		1	

<b>Parts List No.</b> 545014340	 <b>Husqvarna</b> ® PARTS LIST	<b>MODEL</b> 125R
<b>Date</b> 12/21/06		<b>Replaces</b> 545014340 - 11/21/06
<b>NOTE</b> : Illustration may differ from actual model due to design changes.		<b>Page:</b> 3

**\*\*\*\*\* Service Reference \*\*\*\*\***

Note : Due to product improvements, your unit may have a different clutch drum assembly and flexshaft.  
Please refer to the serial number on your unit and order the parts below.

Serial Number - 2006-273N and lower, please use the following parts:  
 Page 1, Ref.# 30 - 545081805 Kit - Clutch drum & flexshaft  
 Page 2, Ref.# 51 - 545081805 Kit - Clutch drum & flexshaft

Serial Number - 2006-274N and higher, please use the following parts:  
 Page 1, Ref.# 30 - 545007507 Flexshaft  
 Page 2, Ref.# 51 - 530150039 Assy-Clutch drum with adapter

**\*\*\*\*\* Service Reference \*\*\*\*\***

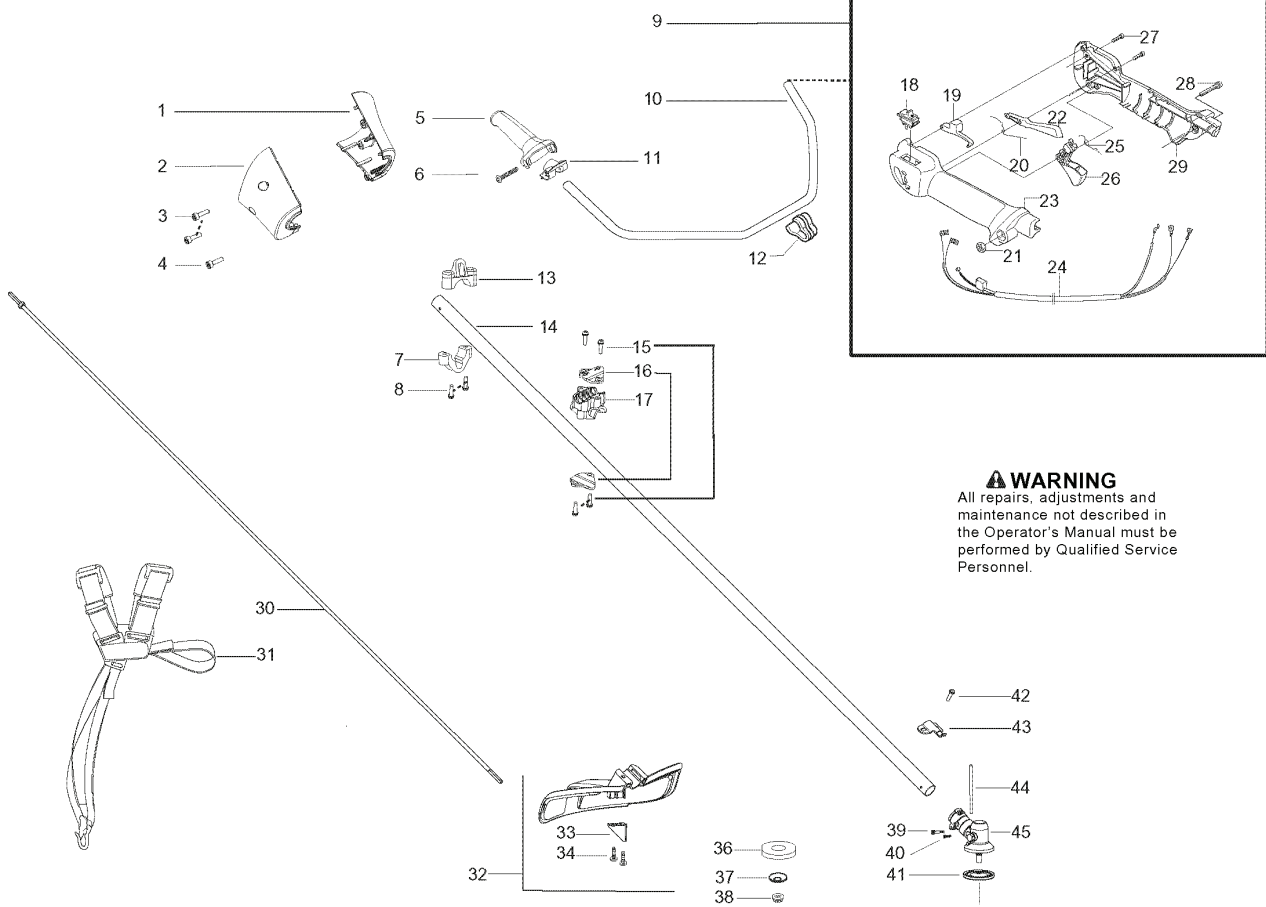
Note : Due to product improvements, your unit may have a different cable assembly and air box.  
Please refer to the serial number on your unit and order the parts below.

Serial Number - 2006-059N and lower, please use the following parts:  
 Page 1, Ref.# 1 - 545050412 Kit - Air box with cable wire harness assembly  
 Page 2, Ref.# 3 - 545050412 Kit - Air box with cable wire harness assembly

Serial Number - 2006-060N and higher, please use the following parts:  
 Page 1, Ref.# 1 - 545125801 Assembly-cable wire harness  
 Page 2, Ref.# 3 - 545084601 Air box



<b>Parts List No.</b> 545014340		<b>Husqvarna</b> ® PARTS LIST	<b>MODEL</b>
<b>Date</b> 12/21/06	<b>Replaces</b> 545014340 - 11/21/06		125R
<b>NOTE :</b> Illustration may differ from actual model due to design changes.			<b>Page:</b> 1



**⚠ WARNING**  
 All repairs, adjustments and maintenance not described in the Operator's Manual must be performed by Qualified Service Personnel.

REF.	PART NO.	DESCRIPTION	REMARK	QTY.	KIT
1	545036401	COVER		1	
2	545036501	COVER		1	
3	530016448	SCREW		1	
4	530016449	SCREW		1	
5	503721003	HANDLE		1	
6	503210745	SCREW IH SCT		1	
7	545056601	CLAMP		1	
8	530015940	SCREW		1	
9	545067101	THROTTLE HANDLE		1	
10	502199503	HANDLEBAR		1	
11	503804501	BRACKET		1	
12	502211201	STAPLE		1	
13	545113301	CLAMP		1	
14	545006068	DRIVE SHAFT ASSY		1	
15	530015814	SCREW		1	
16	530058563	BRACKET		1	
17	545058501	BRACKET		1	
18	537419001	SWITCH		1	
19	537160701	THROTTLE LOCKOUT		1	
20	537174301	SPRING		1	
21	503221013	HEXAGON NUT		1	
22	537160601	THROTTLE LOCKOUT		1	
23	537160203	HANDLE HALF		1	
25	537174201	SPRING THROTTLE TRIG		1	
26	537160801	THROTTLE TRIGGER		1	
27	503216618	SCREW IH SCT		1	
28	503200735	SCREW IH SCFM		1	
29	537160301	HANDLE HALF		1	
31	537216301	HARNESS		1	
32	545030901	COMBINATION GUARD		1	
33	530052286	LINE		1	
34	530015814	SCREW		1	
36	503890101	SUPPORT CUP		1	
37	537285601	SUPPORT FLANGE		1	
38	503856301	NUT		1	
39	530016014	SCREW		1	
40	530016301	SCREW		1	
41	537234901	DRIVER ASSY		1	
42	530015771	SCREW		1	
43	530057554	BRACKET		1	
44	502285901	STOP		1	
45	530096295	BEVEL GEAR		1	
-	537312901	TRANSPORT GUARD		1	
-	530031159	WRENCH		1	
-	502114602	SOCKET WRENCH		1	
	PART NO.		REMARK		KIT