

262 XPH, 1993-12

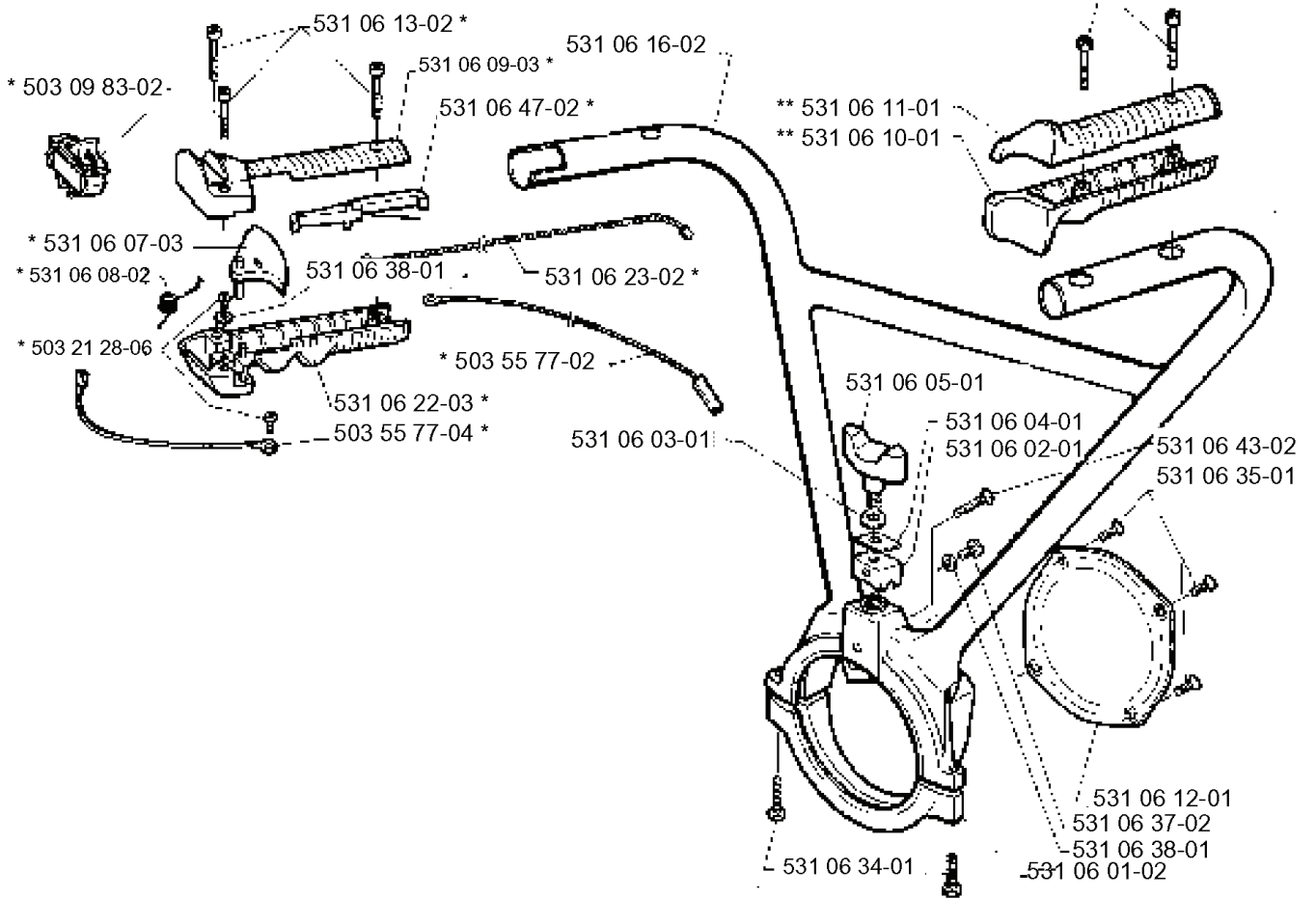
SPARE PARTS LIST

J

***compl 503 06 14-01**

****compl 503 06 15-01**

531 06 13-02 **



REF.	PART NO.	DESCRIPTION	REMARK	QTY.	KIT
5030983-02	503098302	STOP SWITCH		1	
5310607-03	531060703	ARM		1	
5310608-02	531060802	NO LONGER AVAILABLE		1	
5032128-06	503212806	SCREW CCRPANT		1	
5035577-04	503557704	CABLE		1	
5310622-03	531062203			1	
5310638-01	531063801	WASHER		1	
5310613-02	531061302	SCREW		1	
5310616-02	531061602	HANDLE		1	
5310609-03	531060903			1	
5310647-02	531064702	BUTTON		1	
5310623-02	531062302	WIRE		1	
5035577-02	503557702	CABLE		1	
5310603-01	531060301	ARTICLE MISSING		1	
5310634-01	531063401	REPL BY 5032032-28		1	
5310601-02	531060102			1	
5310637-02	531063702			1	
5310612-01	531061201	COVER		1	
5310635-01	531063501	REPL BY 7255289-55		1	
5310643-02	531064302	SHAFT		1	
5310602-01	531060201	HANDLE		1	
5310604-01	531060401	HANDLE LOCK		1	
5310605-01	531060501	SCREW		1	
5310610-01	531061001	PALLET		1	
5310611-01	531061101	PALLET		1	
5030615-01	503061501	REPL BY 5030615-00		1	

K

***compl 503 66 68-70**

720 13 14-20 *

503 68 23-01 *

501 43 00-01 *

503 68 08-01
503 21 05-22

501 87 31-01 *

501 76 83-02 *

503 44 32-01 *

503 68 05-01

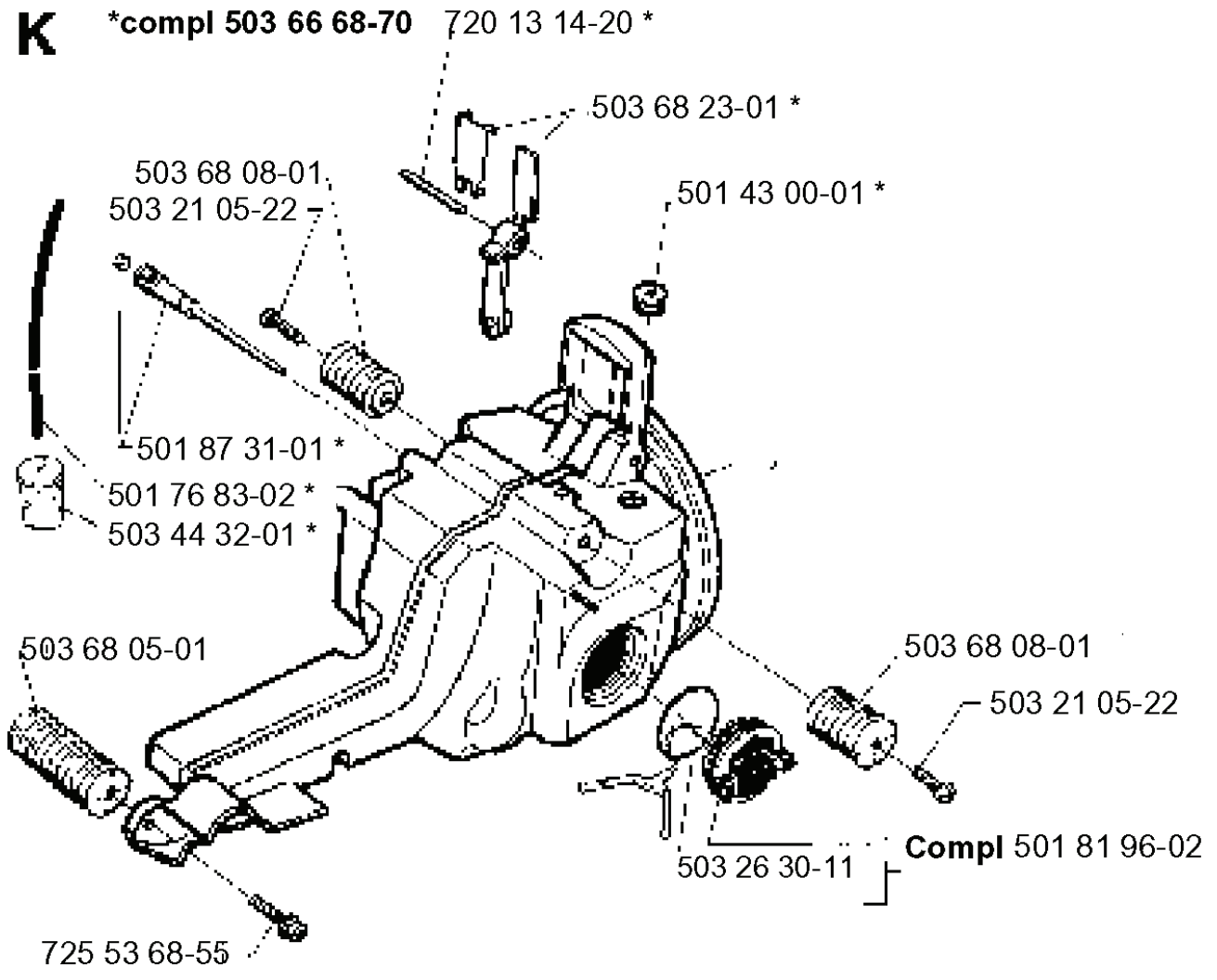
503 68 08-01

503 21 05-22

503 26 30-11

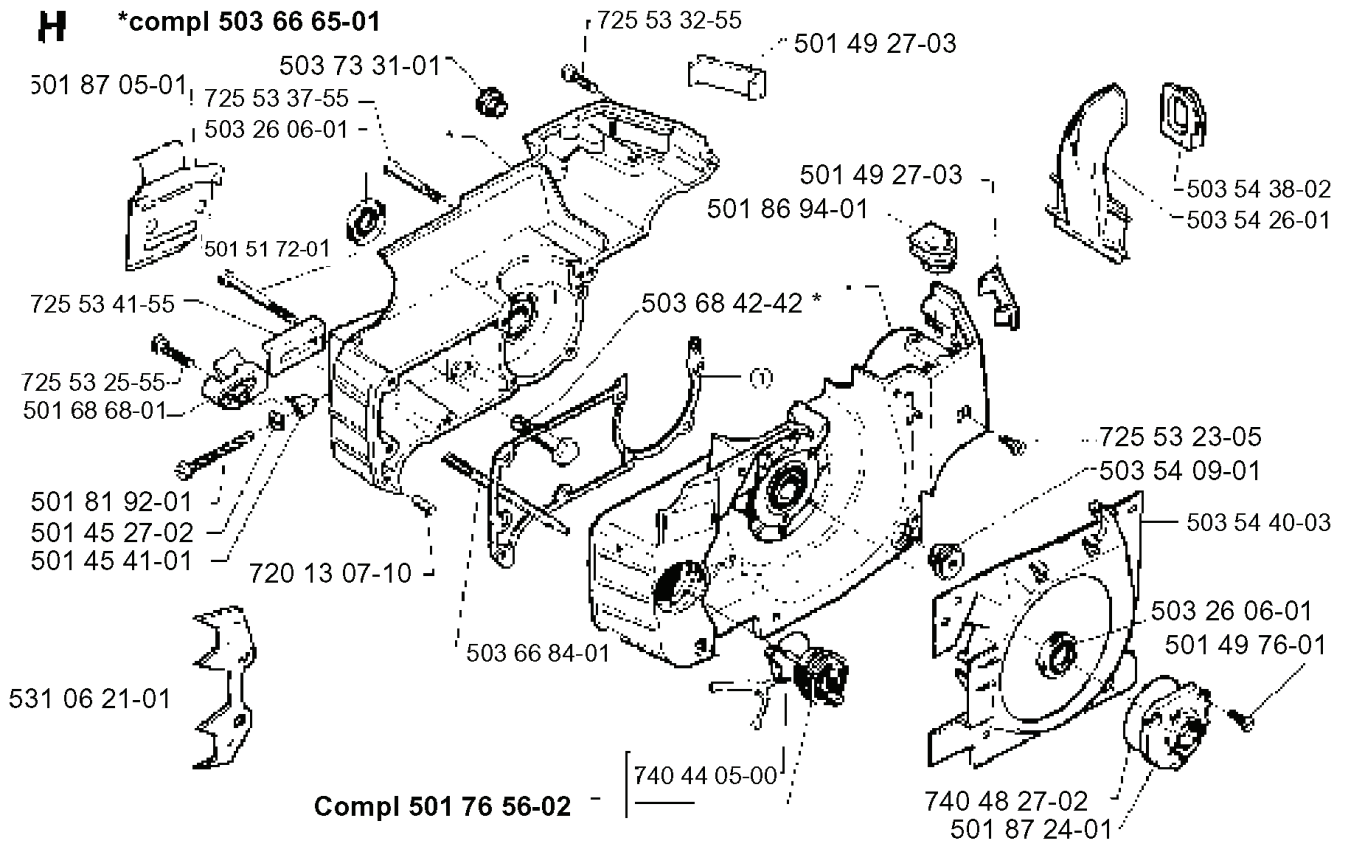
Compl 501 81 96-02

725 53 68-55



REF.	PART NO.	DESCRIPTION	REMARK	QTY.	KIT
503 66 68-70	503666870	TANK ASSY		1	
503 68 08-01	503680801	ANTIVIBRATION ELEMENT		1	
503 21 05-22	503210522	SCREW IH SCT		1	
501 87 31-01	501873101	TANK VENT ASSY		1	
501 76 83-02	501768302	FUEL HOSE		1	
503 44 32-01	503443201	FUEL FILTER		1	
503 68 05-01	503680501	ANTIVIBRATION ELEMENT		1	
725 53 68-55	725536855	SCREW IH SCM		1	
503 26 30-11	503263011	O-RING		1	
501 81 96-02	501819602	TANK CAP ASSY		1	
501 43 00-01	501430001	CABLE GROMMET		1	
503 68 23-01	503682301	THROTTLE LEVER ASSY		1	
720 13 14-20	720131420	PARALLEL PIN		1	

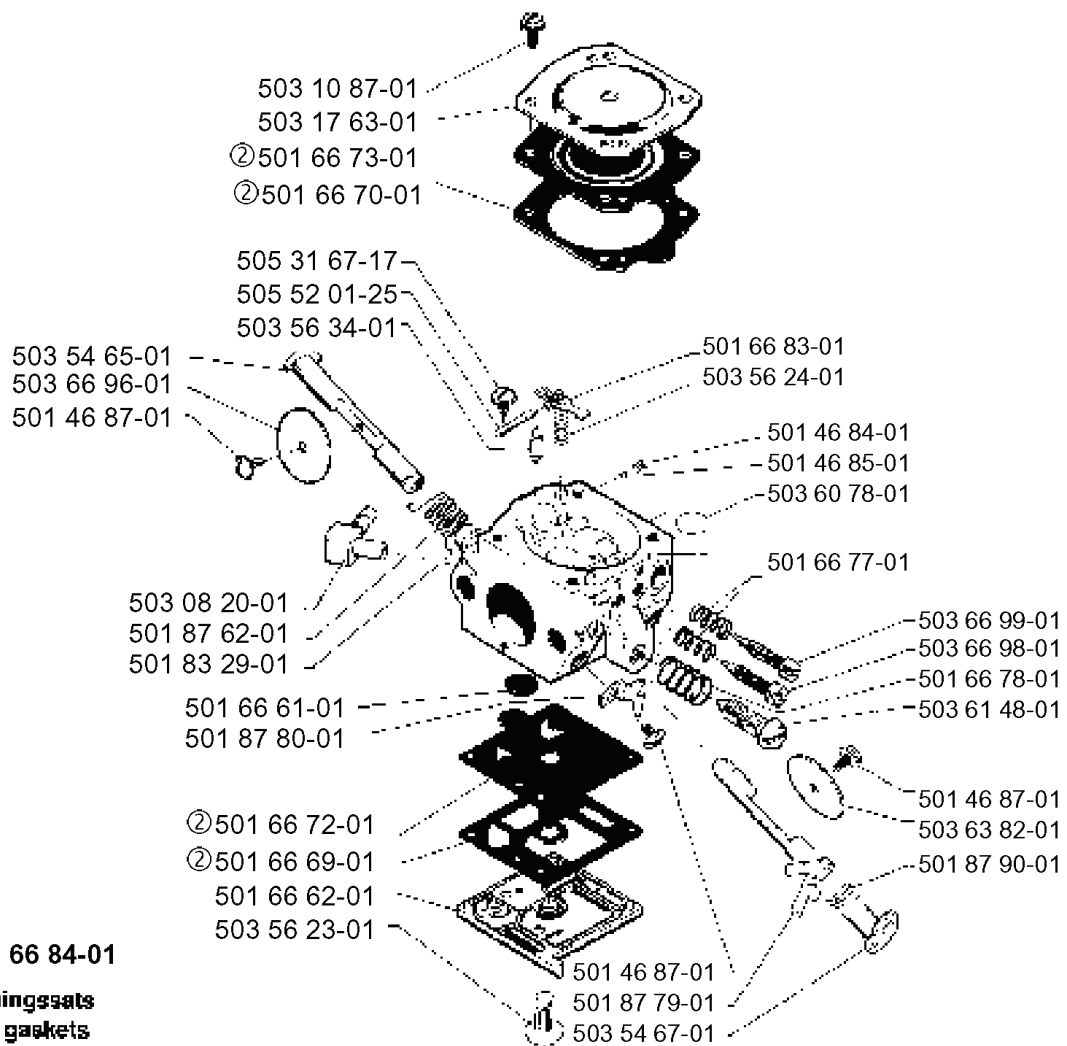
H *compl 503 66 65-01



REF.	PART NO.	DESCRIPTION	REMARK	QTY.	KIT
5036665-01	503666501	CRANKCASE ASSY		1	
5018705-01	501870501	CHAIN GUIDE PLATE		1	
5037331-01	503733101	VALVE HOUSING		1	
7255337-55	725533755	SCREW IHSCM		1	
5032606-01	503260601	SEALING RING		1	
5015172-01	501517201	CHAIN GUIDE		1	
7255341-55	725534155	SCREW IHSCM		1	
7255325-55	725532555	SCREW IHSCM		1	
5016868-01	501686801	CHAIN CATCHER		1	
5018192-01	501819201	SCREW		1	
5014527-02	501452702	LOCK NUT		1	
5014541-01	501454101	NUT		1	
7201307-10	720130710	PARALLEL PIN		1	
5310621-01	531062101	FELLING DOG 262HH		1	
5017656-02	501765602	TANK CAP ASSY		1	
5036684-01	503668401	TANK VENT ASSY		1	
7404405-00	740440500	O-RING		1	
5018724-01	501872401	HOLDER		1	
7404827-02	740482702	O-RING		1	
5014976-01	501497601	SCREW		1	
5035440-03	503544003	AIR CONDUCTOR		1	
5035409-01	503540901	BUFFER		1	
7255323-05	725532305	SCREW IHSCM		1	
5036842-42	503684242	BAR BOLT		1	
5018694-01	501869401	SEALING		1	
5014927-03	501492703	COVER		1	
7255332-55	725533255	SCREW		1	
5035426-01	503542601	AIR NOZZLE		1	
5035438-02	503543802	GROMMET		1	

N Compl 503 28 16-05

Walbro HDA-120

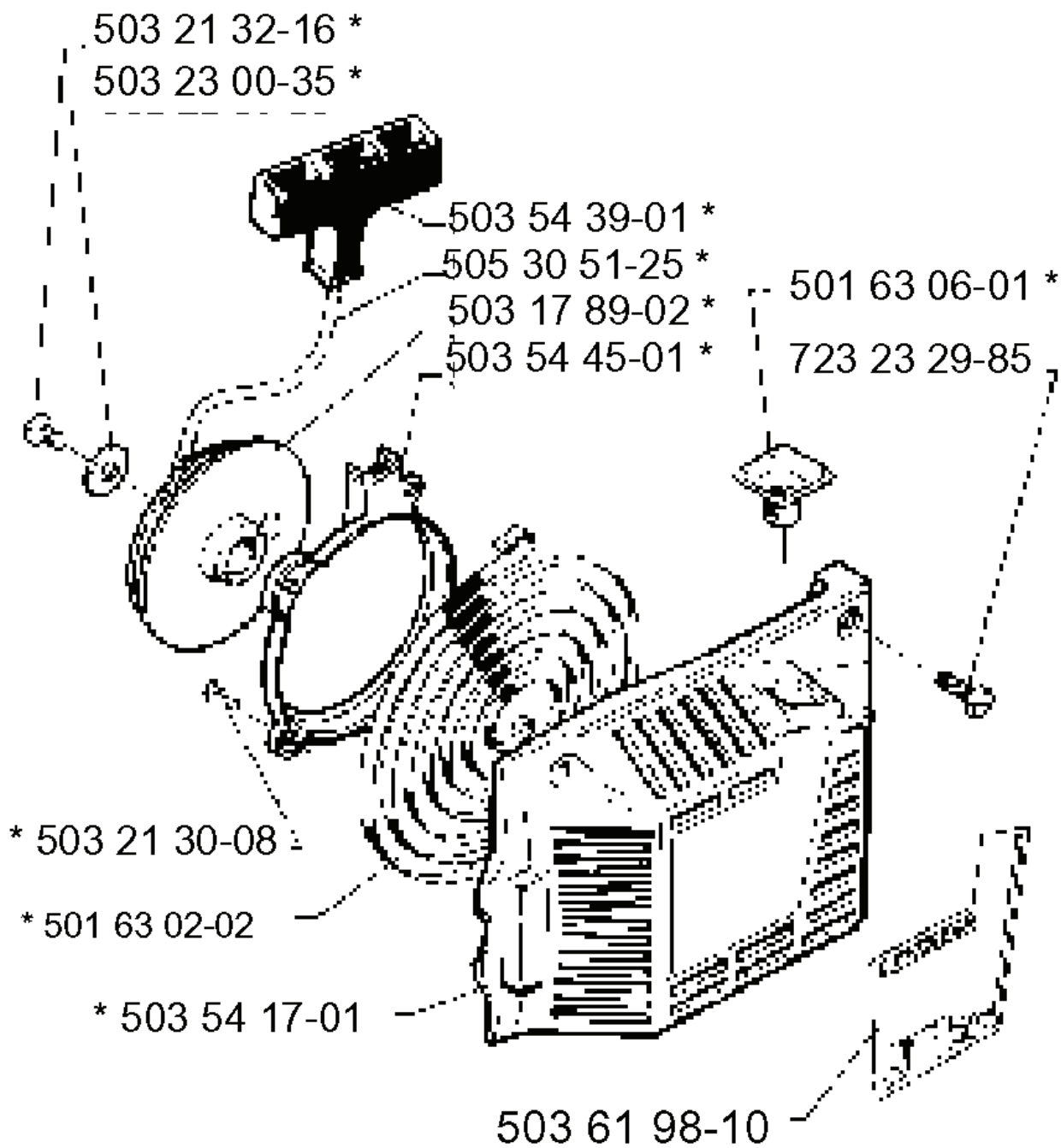


②501 66 84-01

Packingsatz
Set of gaskets
Dichtungssatz
Jeu de joints
Juego de junta

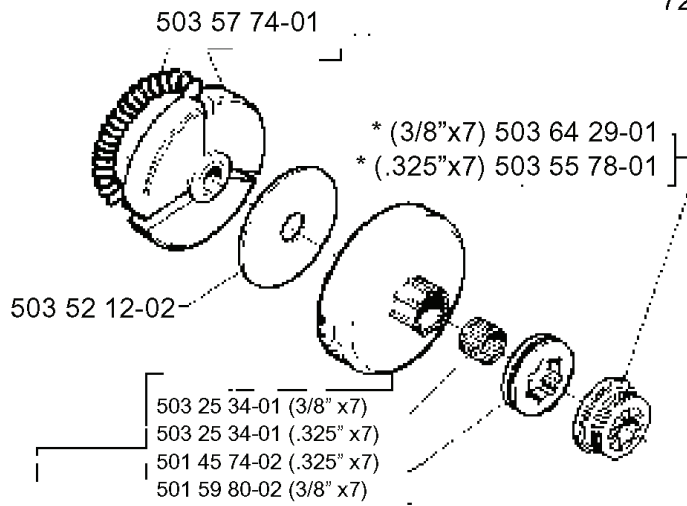
REF.	PART NO.	DESCRIPTION	REMARK	QTY.	KIT
503 28 16-05	503281605	CARBURETTOR		1	
503 10 87-01	503108701	SCREW		1	
503 17 63-01	503176301	COVER		1	
501 66 73-01	501667301	DIAPHRAGM	501 66 84-01 SET OF GASKETS	1	
501 66 70-01	501667001	GASKET	501 66 84-01 SET OF GASKETS	1	
505 31 67-17	505316717	SCREW		1	
505 52 01-25	505520125	PIN		1	
503 56 34-01	503563401	NEEDLE VALVE		1	
503 54 65-01	503546501	SHAFT ASS THROTTLE		1	
503 66 96-01	503669601	VALVE THROTTLE		1	
501 46 87-01	501468701	SCREW		1	
503 08 20-01	503082001	FITTING		1	
501 87 62-01	501876201	SPRING		1	
501 83 29-01	501832901	BUSHING		1	
501 66 61-01	501666101	SCREEN		1	
501 87 80-01	501878001	STOP-THROTTLE		1	
501 66 72-01	501667201	DIAPHRAGM	501 66 84-01 SET OF GASKETS	1	
501 66 69-01	501666901	GASKET	501 66 84-01 SET OF GASKETS	1	
501 66 62-01	501666201	COVER		1	
503 56 23-01	503562301	SCREW		1	
503 54 67-01	503546701	SHAFT ASS CHOKE		1	
501 87 79-01	501877901	LEVER-FAST IDLE		1	
501 87 90-01	501879001	SPRING		1	
503 63 82-01	503638201	VALVE CHOKE		1	
503 61 48-01	503614801	SCREW		1	
501 66 78-01	501667801	SPRING		1	
503 66 98-01	503669801	NEEDLE IDLE SPEED		1	
503 66 99-01	503669901	NEEDLE HIGH SPEED		1	
501 66 77-01	501667701	SPRING		1	
503 60 78-01	503607801	PLUG WELCH		1	
501 46 85-01	501468501	BALL		1	
501 46 84-01	501468401	SPRING		1	
503 56 24-01	503562401	SPRING		1	
501 66 83-01	501668301	LEVER		1	

M *compl 503 54 16-01



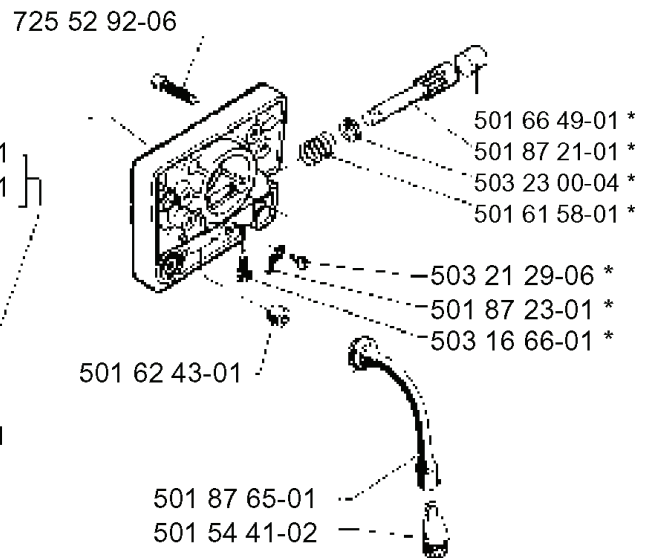
REF.	PART NO.	DESCRIPTION	REMARK	QTY.	KIT
5035416-01	503541601	STARTER		1	
5032132-16	503213216	SCREW CITXPANT		1	
5032300-35	503230035	WASHER		1	
5032130-08	503213008	SCREW CCRPANT		1	
5016302-02	501630202	RECOIL SPRING		1	
5035417-01	503541701	STARTER		1	
5036198-10	503619810	DECAL		1	
7232329-85	723232985	SCREW SLPANM		1	
5016306-01	501630601	SLEEVE		1	
5035445-01	503544501	GUARD RING		1	
5031789-02	503178902	STARTER PULLEY ASSY		1	
5053051-25	505305125	STARTER ROPE		1	
5035439-01	503543901	STARTER HANDLE		1	

D Compl 503 65 78-01 —



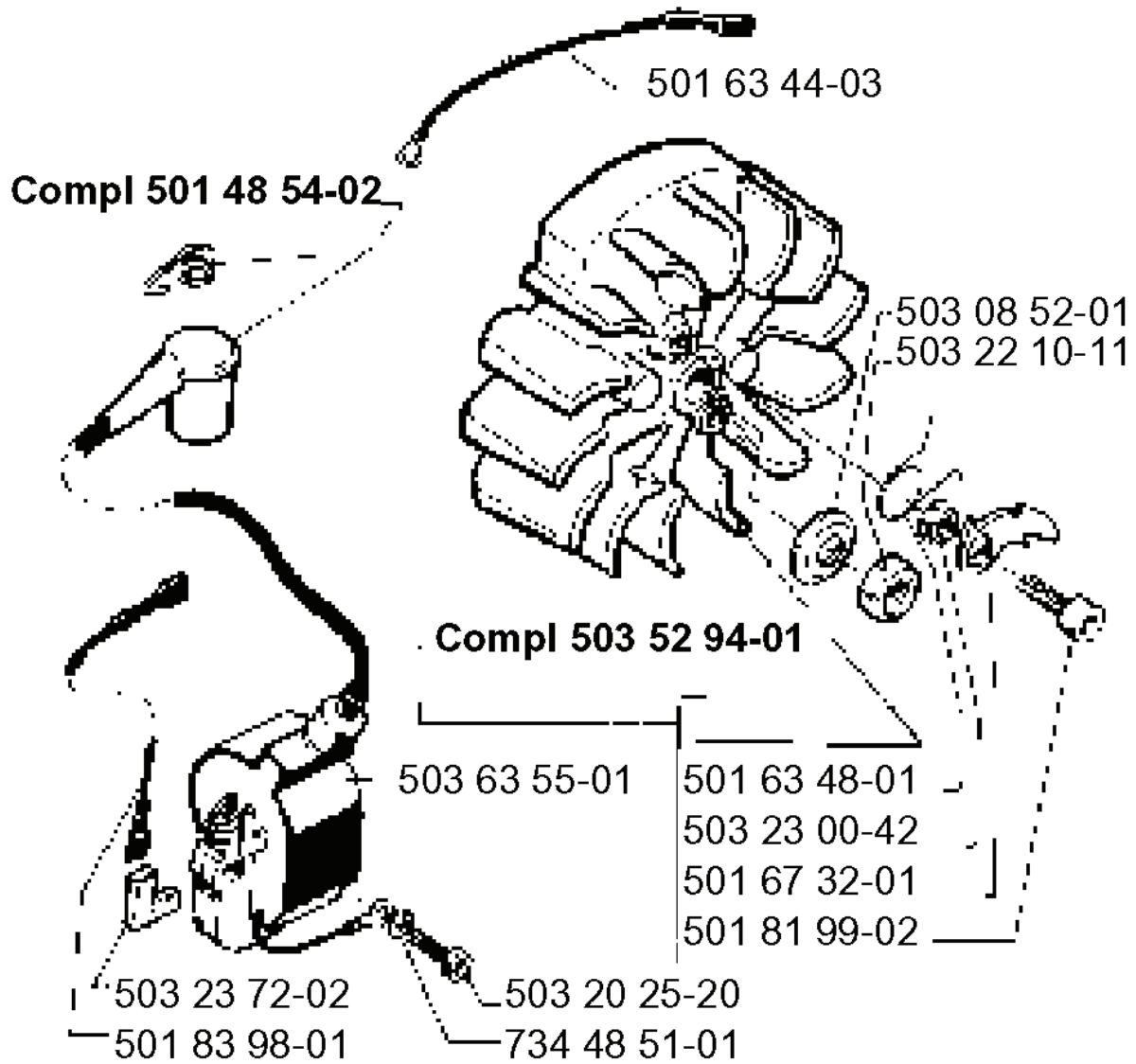
Compl 503 64 66-01 (.325x7)
compl 503 64 66-03 (3/8" x7)

***compl 503 16 73-01**



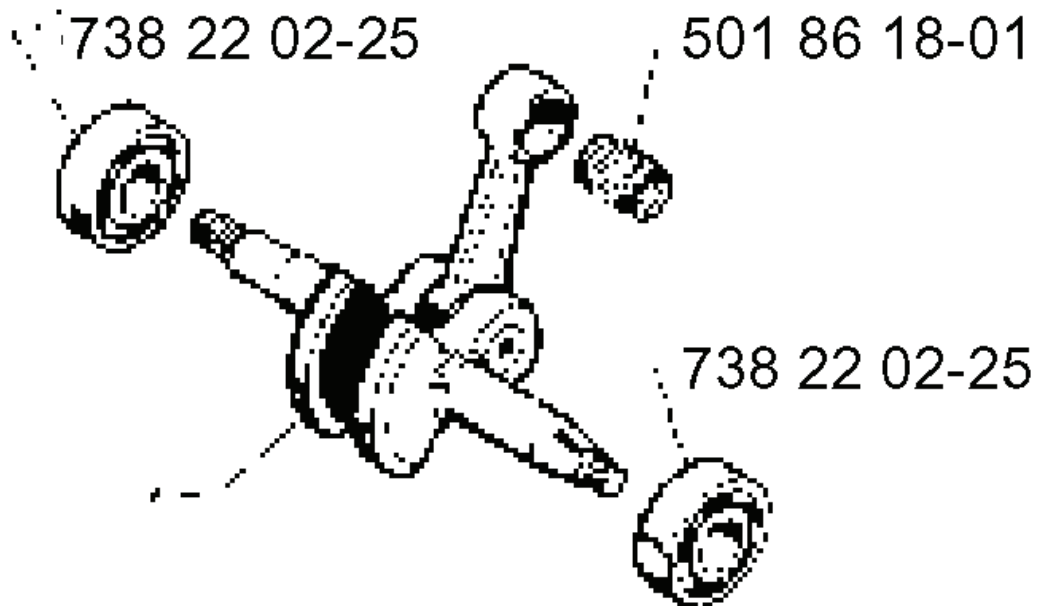
REF.	PART NO.	DESCRIPTION	REMARK	QTY.	KIT
503 65 78-01	503657801	CLUTCH ASSY		1	
503 57 74-01	503577401	CLUTCH SPRING		1	
503 64 29-01	503642901	PUMP PINION	3/8X7	1	
503 55 78-01	503557801	PUMP PINION	.325X7	1	
503 52 12-02	503521202	WASHER		1	
503 25 34-01	503253401	NEEDLE BEARING	.325 X7	1	
501 45 74-02	501457402	RIM	.325 X7	1	
501 59 80-02	501598002	RIM	3/8 X7	1	
503 64 66-01	503646601	CLUTCH DRUM	.325X7	1	
503 64 66-03	503646603	CLUTCH DRUM	3/8 X7	1	
501 54 41-02	501544102	OIL SCREEN		1	
501 87 65-01	501876501	OIL HOSE		1	
501 62 43-01	501624301	SEALING RING		1	
503 16 66-01	503166601	PIN SCREW		1	
501 87 23-01	501872301	LOCKING SPRING		1	
503 21 29-06	503212906	SCREW CCRPANT		1	
501 61 58-01	501615801	SPRING		1	
503 23 00-04	503230004	WASHER		1	
501 87 21-01	501872101	PUMP PISTON		1	
501 66 49-01	501664901	TÄTNINGSPROPP		1	
725 52 92-06	725529206	SCREW		1	
503 16 73-01	503167301	OIL PUMP ASSY		1	

L



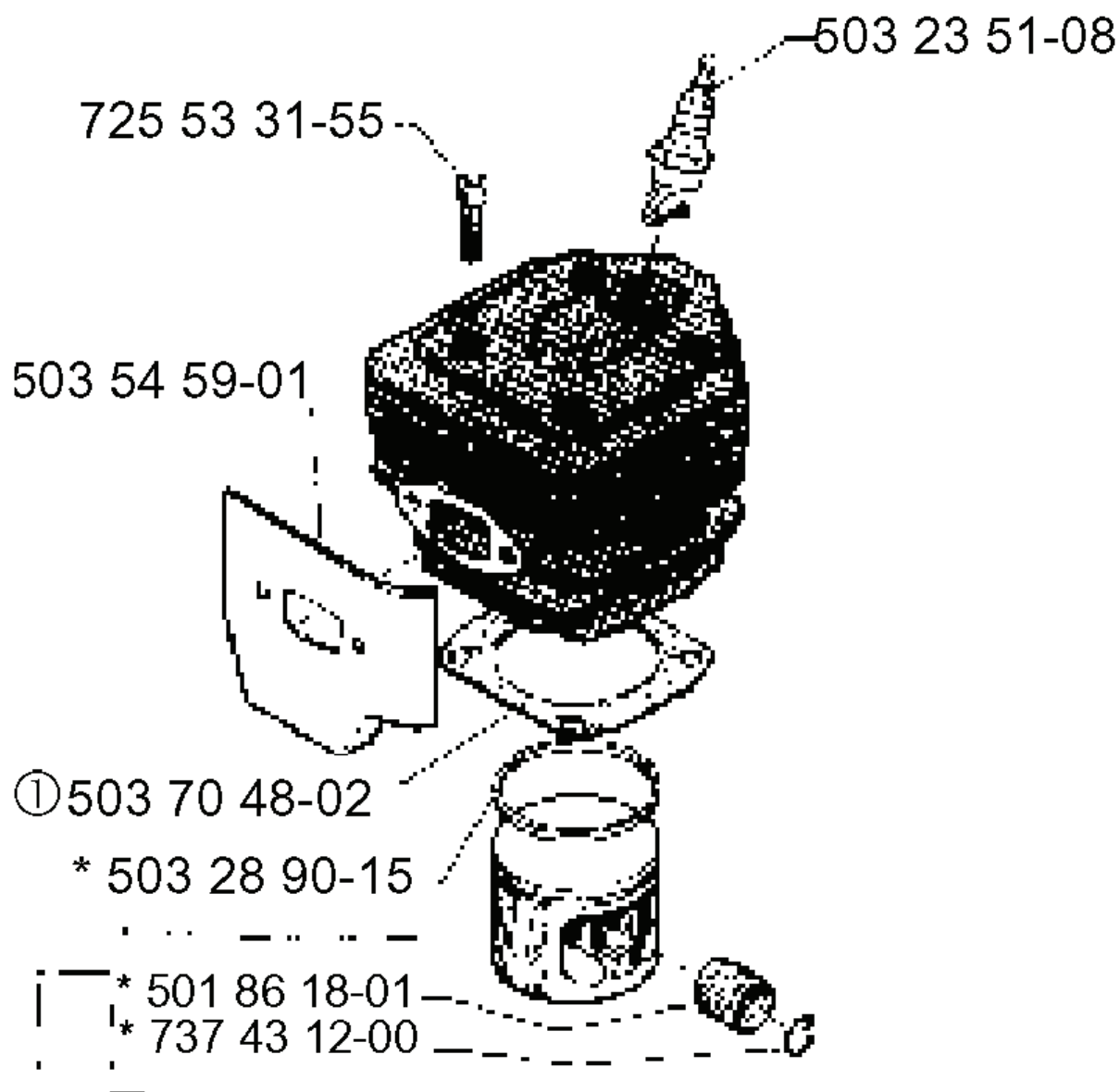
REF.	PART NO.	DESCRIPTION	REMARK	QTY.	KIT
5014854-02	501485402	SPARK PLUG CAP		1	
5035294-01	503529401	FLYWHEEL ASSY		1	
5036355-01	503635501	ELECTRONIC MODULE		1	
5032372-02	503237202	INSULATING CAP		1	
5018398-01	501839801	CABLE		1	
7344851-01	734485101	WASHER		1	
5032025-20	503202520	SCREW IHSCM		1	
5018199-02	501819902	SCREW		1	
5016732-01	501673201	PAWL		1	
5032300-42	503230042	WASHER		1	
5016348-01	501634801	SPRING		1	
5032210-11	503221011	HEXAGON NUT		1	
5030852-01	503085201	WASHER		1	
5016344-03	501634403	CABLE		1	

G *ompl 506 18 19-72



REF.	PART NO.	DESCRIPTION	REMARK	QTY.	KIT
506 18 19-72	506181972	CRANKSHAFT ASSY		1	
738 22 02-25	738220225	BALL BEARING		1	
501 86 18-01	501861801	NEEDLE BEARING		1	

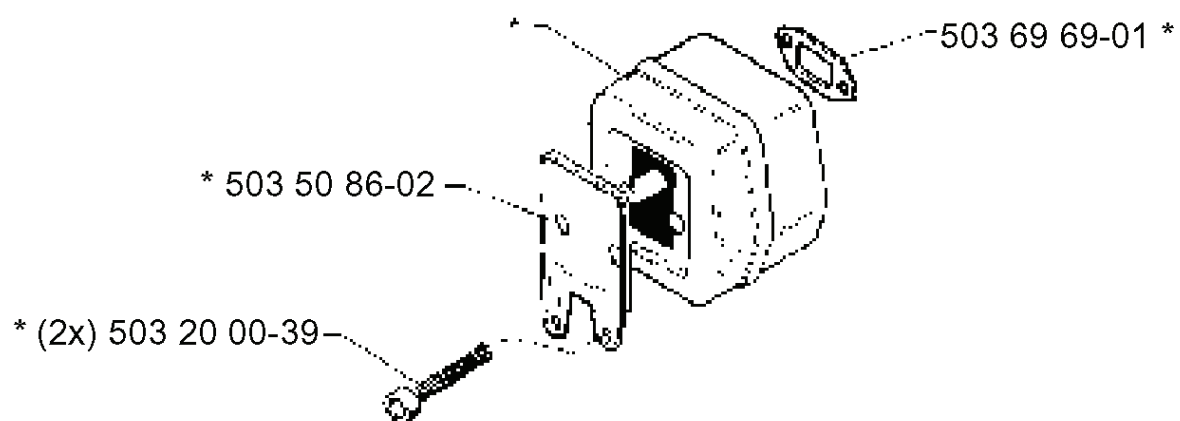
E *compl 503 54 11-71



.. *compl 503 53 11-71

REF.	PART NO.	DESCRIPTION	REMARK	QTY.	KIT
5035411-71	503541171	CYLINDER		1	
7255331-55	725533155	SCREW IHSCM		1	
5035459-01	503545901	HEAT DEFLECTOR		1	
5037048-02	503704802	GASKET		1	
5032890-15	503289015	PISTON RING		1	
5018618-01	501861801	NEEDLE BEARING		1	
7374312-00	737431200	SNAP RING		1	
5035311-71	503531171	PISTON ASSY		1	
5032351-08	503235108	SPARK PLUG		1	

C *compl 503 55 55-05



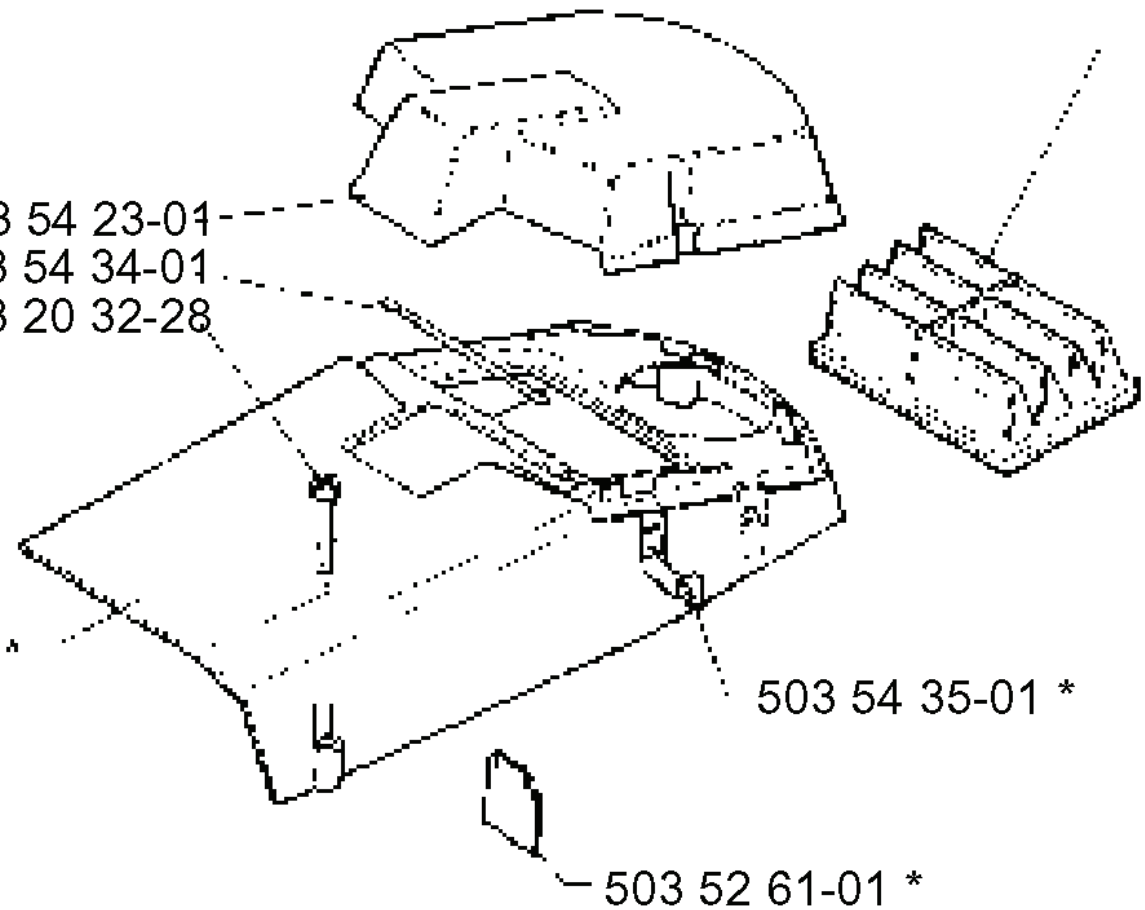
REF.	PART NO.	DESCRIPTION	REMARK	QTY.	KIT
503 55 55-05	503555505	MUFFLER		1	
503 50 86-02	503508602	BASEPLATE		1	
503 20 00-39	503200039	SCREW EHHFM	2X	1	
503 69 69-01	503696901	FLANGE WASHER		1	

B

*compl 503 54 21-01

503 44 72-01
(nylon medium mesh) |
503 44 72-04
(nylon fine mesh) |
503 44 72-03.(NW) |

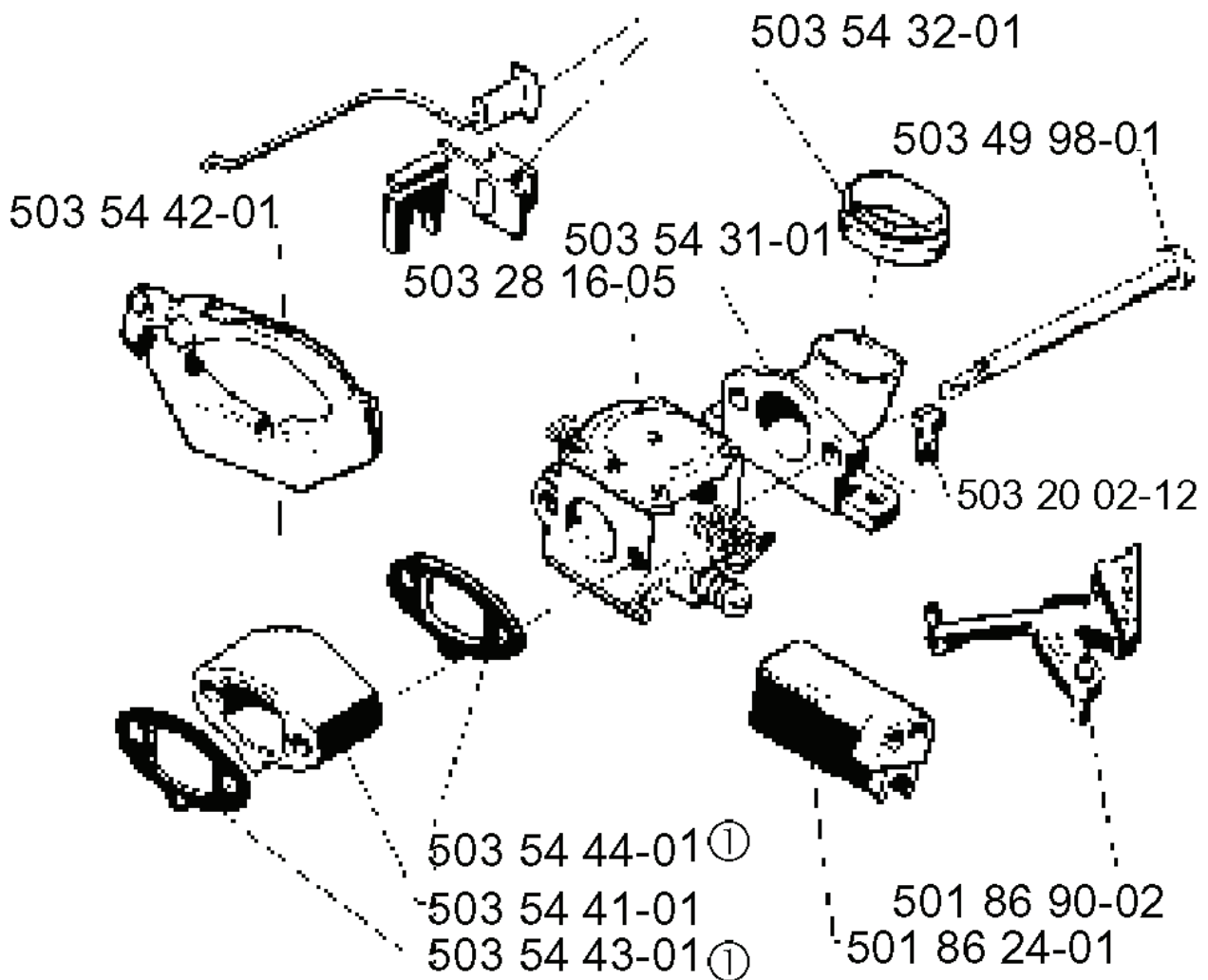
* 503 54 23-01
* 503 54 34-01
* 503 20 32-28



REF.	PART NO.	DESCRIPTION	REMARK	QTY.	KIT
503 54 21-01	503542101	CYLINDER COVER ASSY		1	
503 54 23-01	503542301	FILTER COVER		1	
503 54 34-01	503543401	SPRING		1	
503 20 32-28	503203228	SCREW		1	
503 52 61-01	503526101	WINTER PLUG		1	
503 54 35-01	503543501	SPRING		1	
503 44 72-03	503447203	AIR FILTER	NW	1	
503 44 72-04	503447204	AIR FILTER	NYLON FINE MESH	1	
503 44 72-01	503447201	AIR FILTER	NYLON MEDIUM MESH	1	

F

Compl 501 87 68-06



REF.	PART NO.	DESCRIPTION	REMARK	QTY.	KIT
5018768-06	501876806	THROTTLE CABLE ASSY		1	
5035442-01	503544201	SEALING COLLAR		1	
5035443-01	503544301	GASKET		1	
5035441-01	503544101	MANIFOLD		1	
5035444-01	503544401	GASKET		1	
5018624-01	501862401	GUIDE BUSHING		1	
5018690-02	501869002	CHOKE CONTROL		1	
5032002-12	503200212	SCREW IHSCFM		1	
5032816-05	503281605	CARBURETTOR		1	
5035431-01	503543101	FILTER HOLDER		1	
5034998-01	503499801	CARBURETTOR SCREW AS		1	
5035432-01	503543201	SEALING		1	

P

Tilbehör
Accessories
Zubehöre
Accessoires
Accesorios



501 69 17-01



501 68 89-01




501 91 14-01



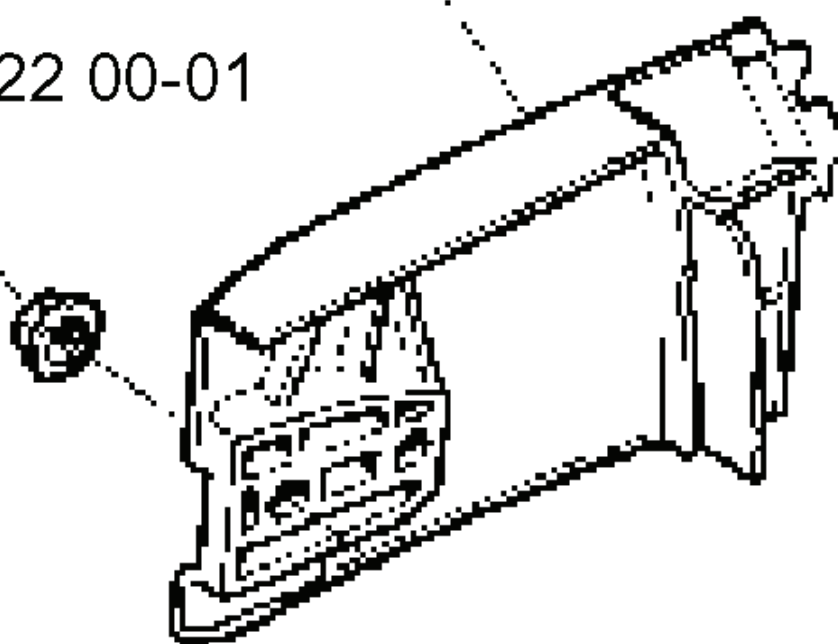
503 08 54-01

REF.	PART NO.	DESCRIPTION	REMARK	QTY.	KIT
5016917-01	501691701	COMBINATION WRENCH		1	
5016889-01	501688901	COMBINATION WRENCH		1	
5019114-01	501911401	GREASE GUN		1	
5030854-01	503085401	GREASE		1	

A *compl 503 69 07-01

 Husqvarna --- 503 71 09-01 *

503 22 00-01



503 68 93-01 *



REF.	PART NO.	DESCRIPTION	REMARK	QTY.	KIT
5036907-01	503690701	CLUTCH COVER ASSY		1	
5032200-01	503220001	HEXAGON NUT		1	
5036893-01	503689301	CHIP GUARD		1	
5037109-01	503710901	LABEL		1	