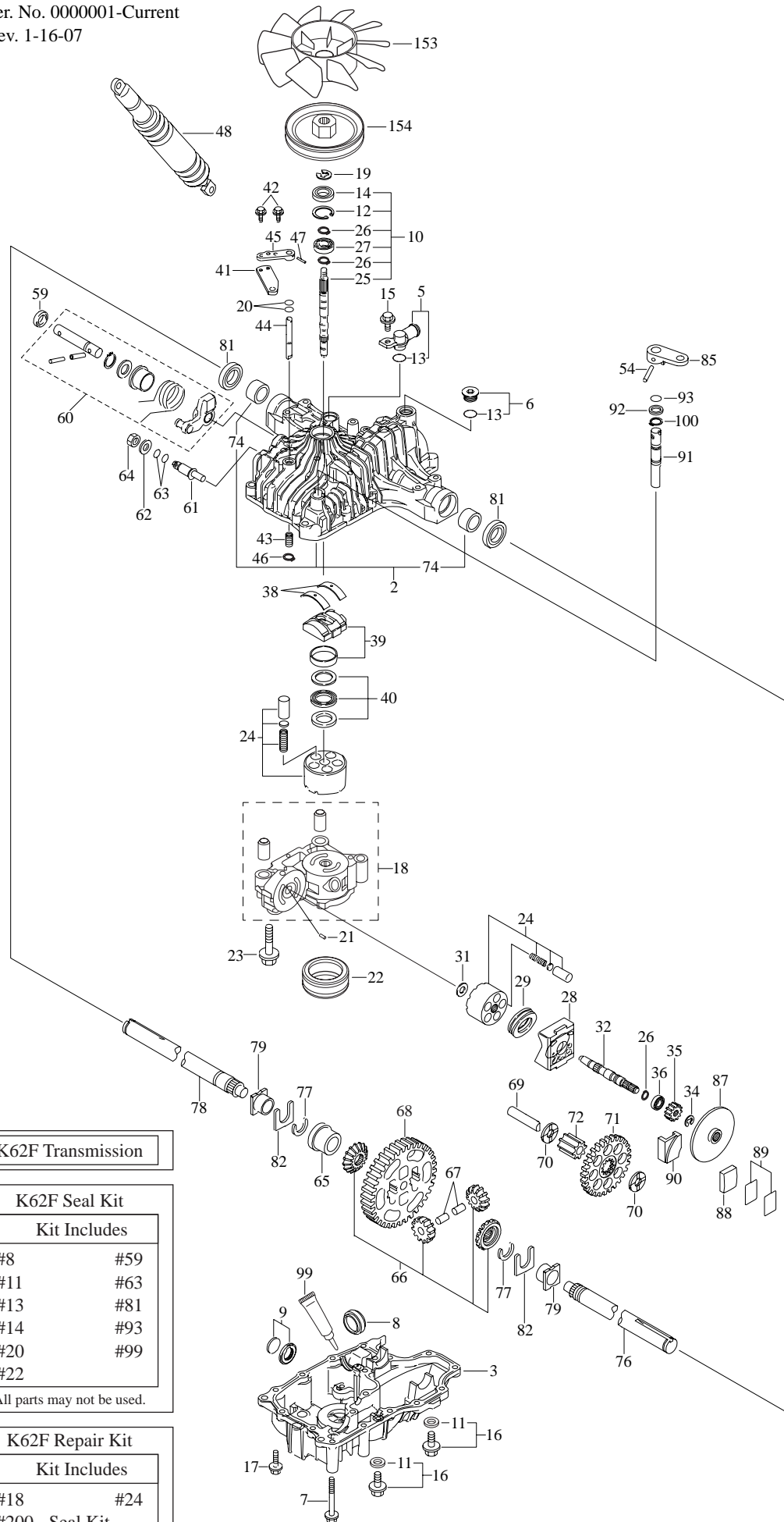




Transmission K62F

Spare parts
Ersatzteile
Pièces détachées
Reserve onderdelen
Repuestos
Reservdelar



1- K62F Transmission

200- K62F Seal Kit

Kit Includes	
#8	#59
#11	#63
#13	#81
#14	#93
#20	#99
#22	

All parts may not be used.

201- K62F Repair Kit

Kit Includes	
#18	#24
#200 - Seal Kit	

All parts may not be used.

ID NUMBER	TTC PART No.	Husq.no	PART DESCRIPTION
1	7A632084270	506991101	K62F HSQ EU TRANSAXLE
2	1A632024101	502449101	UPPER CASE KIT
3	1A632024161	535414621	LOWER CASE
5	1A632084750	502450201	FITTING
6	1A632024290	535402821	OIL CAP M20 STEEL
7	19215424310	535414683	CAP SCREW 8 * 75
8	1A632024320	535414623	FILTER
9	19216324350	535414694	MAGNET
10	62003	502463601	PUMP SHAFT/BEARING KIT
11	22190100000	535402825	SEAL WASHER 10
12	22252000350	535402850	SNAP RING C 35
13	24311240100	535402815	O-RING P 10A
14	24421153507	506957201	SEAL TC153507
15	26106080352	502462801	BOLT 8 * 35
16	26106100122	535402824	BOLT 10 * 12
17	26476080302	535402828	TAPPING SCREW 8 * 30
18	1A632024500	535414624	CENTER CASE A
19	19215485310	535402807	E-RING 15
20	24311240100	535402815	O-RING P10A
21	19216824760	535402858	PIN 3 * 9.8
22	19215488211	535414691	FILTER
23	26106100652	502462901	BOLT 10 * 65
24	19216825210	535402874	CYLINDER BLOCK KIT
25	1A632025260	535414627	PUMP SHAFT
26	19215425310	535402881	SNAP RING S15
27	24101062020	535402871	BEARING 6202C3
28	1A632024210	535414622	MOTOR HOUSING
29	19215424240	535414682	THRUST BEARING
31	19216825230	535402879	WASHER 12 * 24 * 1
32	1A632025270	535414628	MOTOR SHAFT
34	1A632025350	535414629	E-RING
35	1A632085410	535414668	MOTOR GEAR 16T
36	24102063020	535414704	BEARING 6302DUC3
38	19215427051	535414686	THRUST METAL
39	1A632027100	535414633	SWASH PLATE ASSEMBLY
40	19215427190	535414687	THRUST BEARING K81106
41	1A632089521	535402826	BYPASS ARM
42	26013060142	535402827	BOLT 6 * 14
43	19215427281	502460101	SPRING 25
44	1A632029510	535414634	BYPASS SHAFT
45	1A632029520	535402817	BYPASS LEVER
46	19216829570	535402849	SNAP RING 10
47	22351030020	535402816	SPRING PIN 3.0A * 20
48	19215489150	502460301	SHOCK ABSORBER K65
54	22351060040	535402809	ROLL PIN 6 * 40
59	19406527270	535402811	SEAL TC 16 26 6
60	1A632089800	502451101	CONTROL SHAFT COMPLETE
61	1A632029700	535402892	FULCRUM
62	22137120000	535402813	WASHER 12
63	24311000140	535402814	O-RING 1A P14

64	26776120002	506956601	NUT 12
66	1A632031501	502449401	DIFFERENTIAL GEAR KIT
67	1A632031810	535414638	DIFFERENTIAL PINION PIN
68	1A632033540	535414643	FINAL GEAR
69	1A632033410	535414639	FINAL PINION SHAFT
70	1A632033420	535414640	WASHER 15 * 35 * 3.2
71	1A632083490	535414660	REDUCTION GEAR 49T
72	1A632033510	535414642	FINAL PINION GEAR (11T)
74	19215434240	535414690	BUSHING 25.4
76	1A632089320	502450701	AXLE SHAFT LEFT
77	19216734160	535414696	RETAINING RING 23
78	1A632089420	502450801	AXLE SHAFT RIGHT
79	19216734240	535414697	BUSHING
80	1A632034270	535414644	COLLAR 25.4
81	19215434270	535402810	SEAL S 25.4 * 42 * 8
82	1A632034290	535414645	THRUST WASHER
85	1A632089870	535402808	BRAKE LEVER
87	1A632036110	535414646	BRAKE DISC
88	1A632036120	535414647	BRAKE SHOE
89	1A632036170	502449501	SHIM KIT
90	1A632036201	535414652	BRAKE
91	1A632036160	535414650	BRAKE SHAFT
92	1A632036190	535414651	WASHER 16 * 23 * 1.6
93	24311000120	535414619	O-RING P12
99	Part of Seal Kit	#N/A	SEALANT
100	22242000160	535414702	SNAP RING
132	1A632089521	535402826	BYPASS ARM
153	1A632085100	502450301	FAN 7" Dia.
154	19215489061	535414946	PULLEY 4" Dia.
200	1A632099300	502451401	SEAL KIT
201	62001	502463501	REPAIR KIT